

**22,000 Square Feet  
on 20.91 Acres**

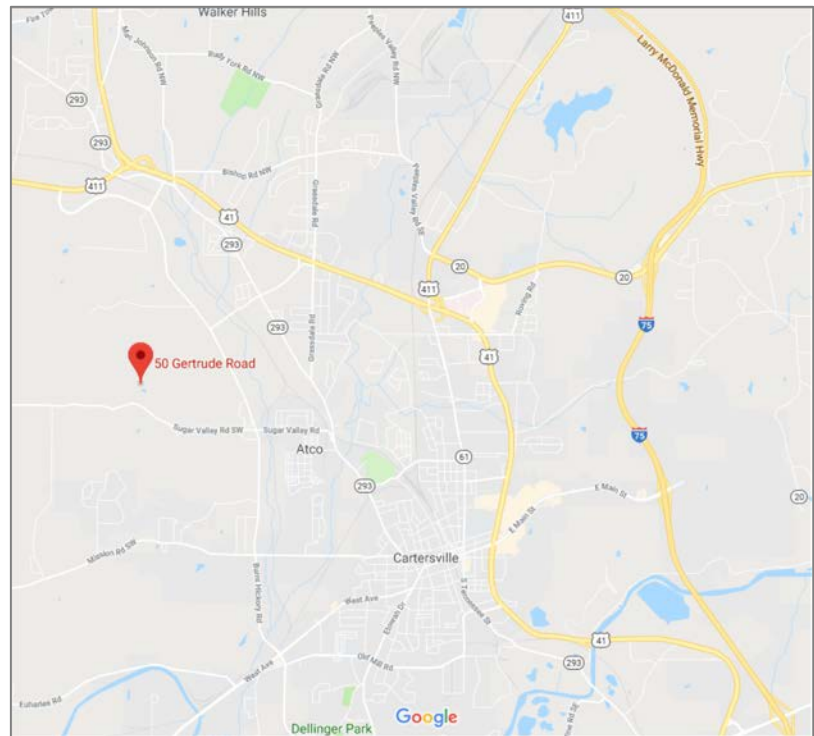


**50 Gertrude Road | Cartersville, Georgia 30120**  
**Available for Sale or Lease**

**Property Features:**

Total Available Sq. Ft.:	+/-22,000 Sq. Ft.
Office Size.:	500 Sq. Ft.
Warehouse Size:	21,500 Sq. Ft.
Site Size:	20.91 Acres
Loading Doors:	4 Drive-in Doors
Zoning:	A-1, Bartow County

**\* Potential Recycling Center Use Permitted**



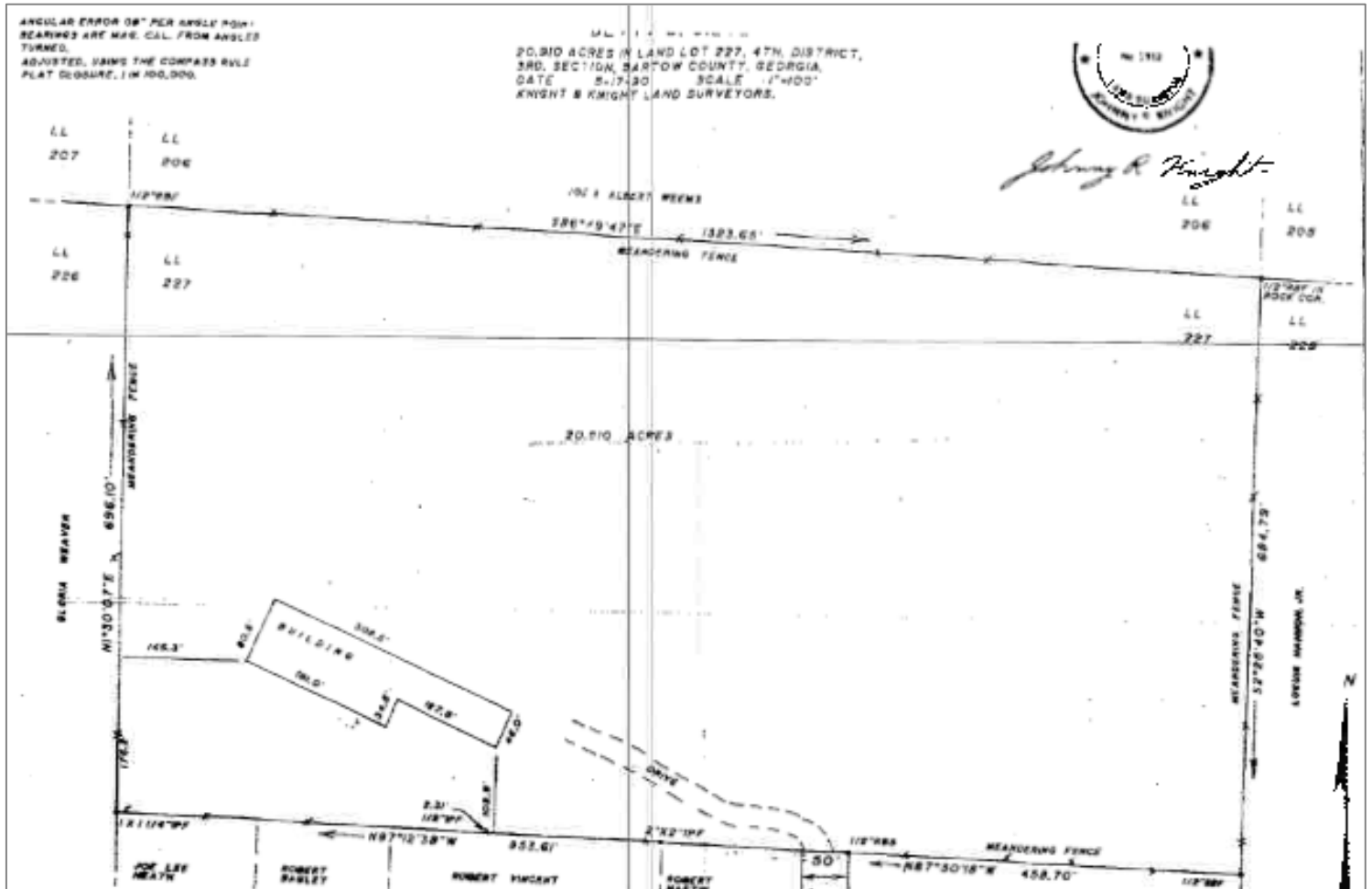
**For More Information, Contact:**

Mr. David Nash  
dnash@nashcommercial.com  
404-386-5846



50 Gertrude Road  
 Cartersville, Georgia 30120

22,000 Square Feet  
 on 20.91 Acres

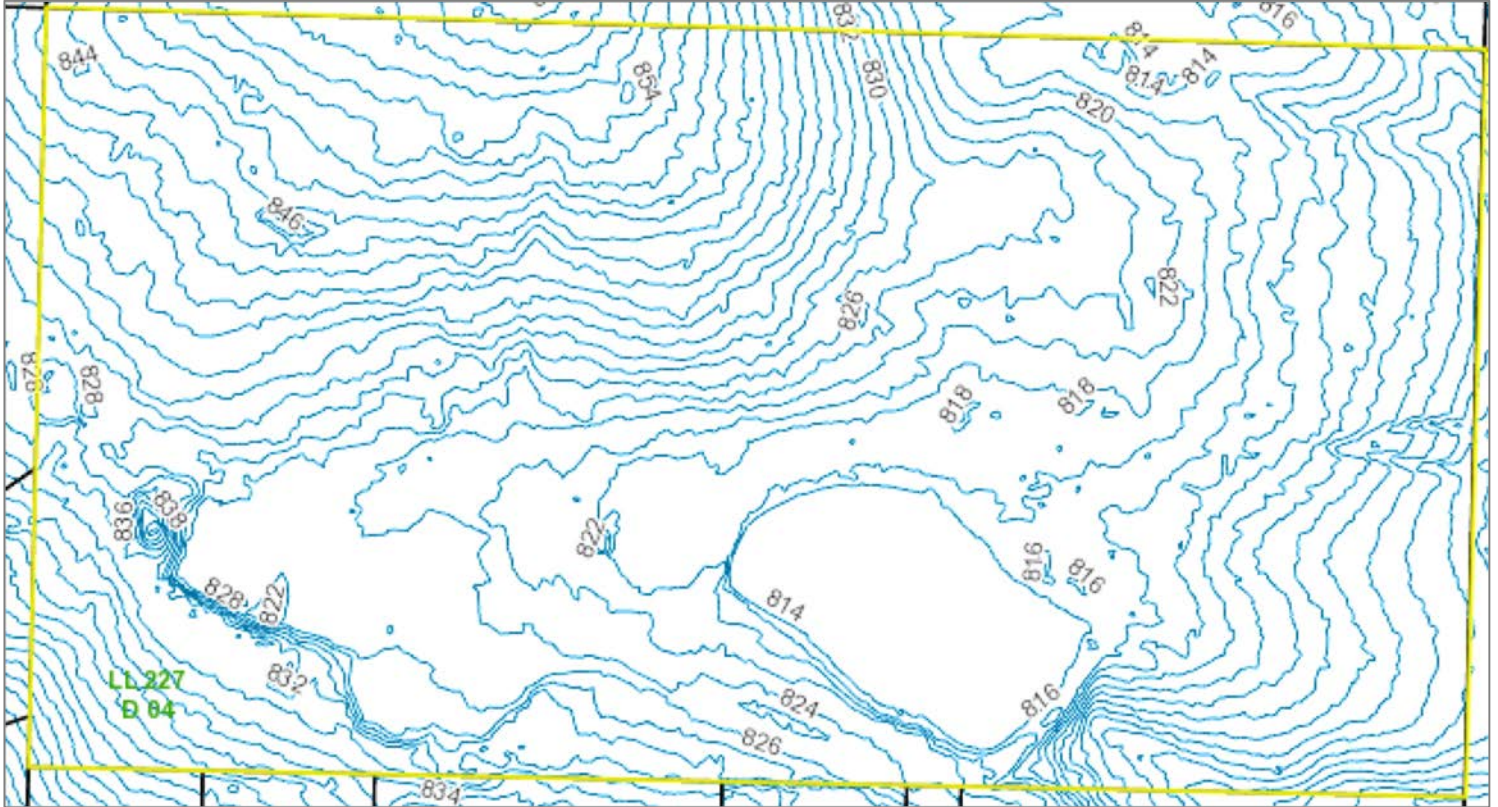


**NASH**   
**COMMERCIAL**

The information contained herein is believed to be accurate but is not warranted as to accuracy and may change or be updated without notice.

50 Gertrude Road  
Cartersville, Georgia 30120

22,000 Square Feet  
on 20.91 Acres



**NASH**   
**COMMERCIAL**

The information contained herein is believed to be accurate but is not warranted as to accuracy and may change or be updated without notice.

50 Gertrude Road  
Cartersville, Georgia 30120

22,000 Square Feet  
on 20.91 Acres



**NASH**   
**COMMERCIAL**

The information contained herein is believed to be accurate but is not warranted as to accuracy and may change or be updated without notice.