

Port Blakely Cemetery

New Section Schematics

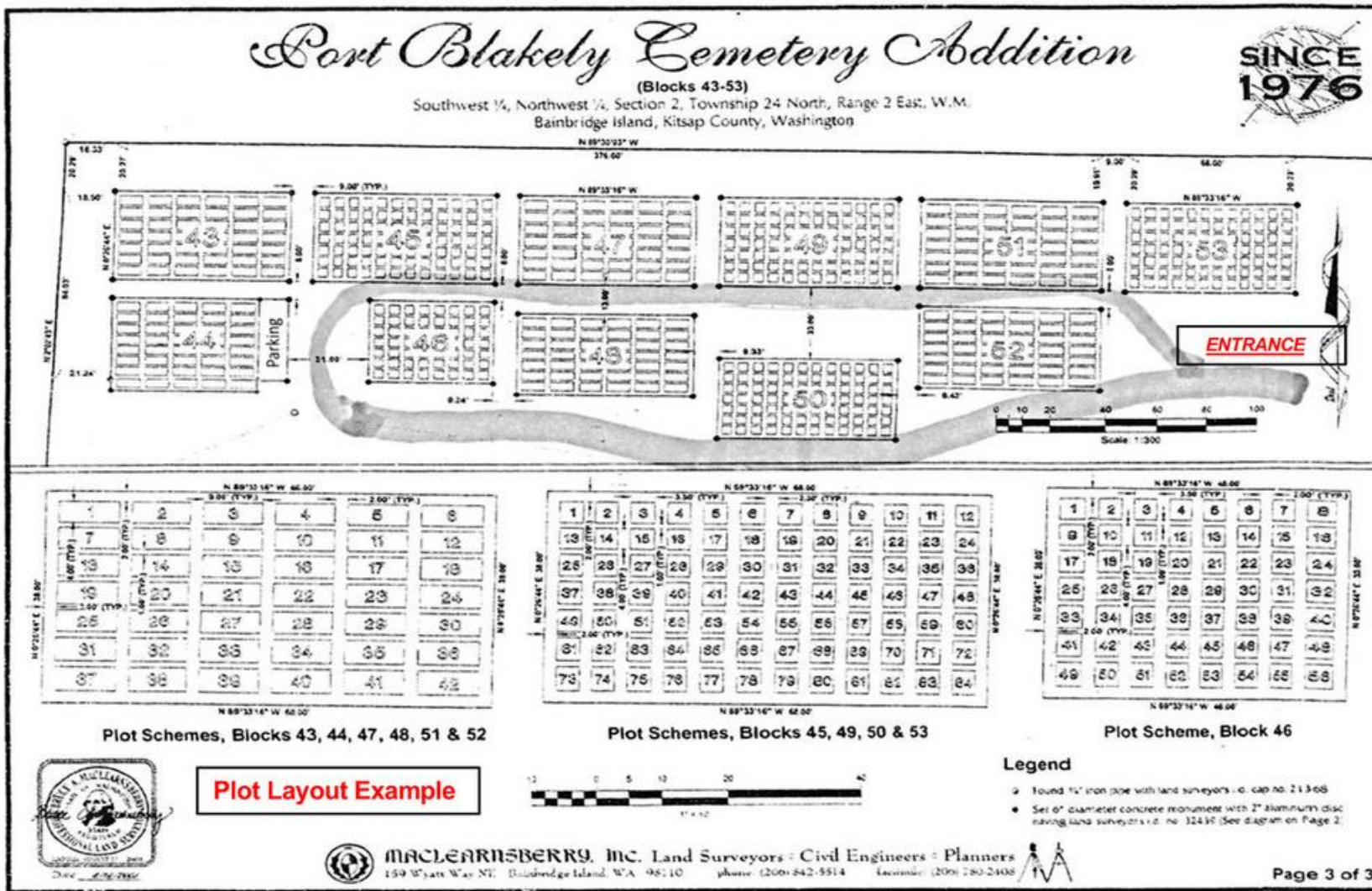
Sections 43 - 53

Bainbridge Island, WA

Established 1880

New Section Map

Plot Layout Example



Port Blakely Cemetery

Full Plots

Section 43



43-1 O'Brien	43-2 Andrews, Barry & Linda Reserved Rcpt #21-15	43-3 Cunningham, Michael G. Burial	43-4 RESERVED Dronkert	43-5 Helen W. Mount Casket 2011 # 1912	43-6 Douglas L. & Janette A. JONAS RESERVED # 1907
43-7 James E. Sergent	43-8 Anderson, Joel Inslee, Megan Rcpt #22-18	43-9 Cunningham, Mary K Rcpt #19-33 Reserved	43-10 Louise Dronkert Casket 2017 # 1987	43-11 Howard E. Mount Casket 2016 # 1912	43-12 Douglas L..JONAS Burial
43-13 Anne E. Fisher RESERVED # 1917 4-11-2012	43-14 Anderson, Carol F. 2022	43-15 Macy, William & Marie Rcpt #23-16	43-16 Peek, James & Deborah Rcpt #22-14	43-17 Ducceschi, Frank D. 2021	43-18 Leonard, Robert G. Leonard, Joan M. Cremains 2022
43-19 Ted S. Frost Casket Rcpt #18-32	43-20 Anderson, Joel Inslee, Megan Rcpt #22-18	43-21 Macy, William & Marie Rcpt #23-16	43-22 Peek, Anna 2022 Cremains	43-23 Hartman, Lois Mahoney, Richard Rct #23-26 Reserved	43-24 Ikegami, Peter & Lisa Rcpt #23-01
43-25 Frost Reserved Rcpt #18-32	43-26 Anderson, Joel Inslee, Megan Rcpt #22-18	43-27 Macy, William & Marie Rcpt #23-23 Reserved	43-28 available	43-29 Hartman, Lois Mahoney, Richard Rcpt #23-26	43-30 Ikegami, Peter & Lisa Rcpt #23-01
43-31 Nagle, Ann & James Reserved Rcpt #20-09	43-32 Fries, Karen Tait, Finn Rcpt #22-16	43-33 Macy, William & Marie Rcpt #23-23 Reserved	43-34 available	43-35 Mahoney, Richard Hartman, Lois Rcpt #23-26	43-36 available
43-37 Marjorie A. Fitzgerald 2018	43-38	43-39 Macy, Kip M. Rcpt #23-24 Reserved	43-40 Suyematsu, Ronald Rcpt #22-10	43-41 Mahoney, Richard Hartman, Lois Rcpt #23-26	43-42 available

Port Blakely Cemetery

Full Plots



Section 44

44-1 Curtis, Katy Schabert, Brad Reserved Rcpt #24-06	44-2 Available	44-3 Available	44-4 Available	44-5 Available	Parking
44-6 Curtis, Mary & Stan Reserved Rcpt #24-07	44-7	44-8 available	44-9 available	44-10 available	
44-11 Blevins, Linda Reserved Rcpt #23-18	44-12 available	44-13 available	44-14 available	44-15 available	
44-16 Blevins, Linda Reserved Rcpt #23-18	44-17 available	44-18 available	44-19 available	44-20 available	
44-21 Hubbard, Stephen Meier, Linda Reserved Rcpt #24-04	44-22 available	44-23 available	44-24 available	44-25 available	
44-26 available	44-27 available	44-28 available	44-29 available	44-30 available	
44-31 Felts, Vera Reserved Rcpt #23-21	44-32 available	44-33 available	44-34 available	44-35 Henry-Exarhos, Brandi Henry, David Reserved - Rcpt #23-27	
44-36 Pelly, Nicole Reserved Rcpt #23-22	44-37 Brown, Michael Reserved Rcpt #23-9	44-38 Black, Kayla Reserved Rcpt #23-11	44-39 Black, Alan Reserved Rcpt #23-10	44-40 Black, Alan Reserved Rcpt #23-10	
44-41 Pelly, Lisa Reserved Rcpt #23-17	44-42 Brown, Michael Reserved Rcpt #23-9	44-43 Black, Kayla Reserved Rcpt #23-11	44-44 Black, Alan Reserved Rcpt #23-10	44-45 Black, Alan Reserved Rcpt #23-10	

Drawing Not To Scale

Port Blakely Cemetery

Half Plots

Section 45



45-1 James Greiter Buried 7/022009	45-2	45-3 Burial Baby Stone	45-4 Viola Stone Buried 1/14/2011	45-5 Morgan McBride Reserved #1994 2017	45--6	45-7 Richard Schoop Burial 2016 # 1973	45-8	45-9 Kondracke Reserved Rcpt #20-28	45-10 James G. Bennett Cremains 2015 # 1956	45-11	45-12 Sandra Lee Hanson 2014 # 1949
45-13 Nishimura, Joyce & Steve Reserved Rcpt #24-08	45-14	45-15 Cini, Michael & Julie Rcpt #20-20 Reserved	45-16	45-17 Morgan McBride Reserved #1994 2017	45-18	45-19 Carol Schoop RESERVED # 1973	45-20	45-21 available	45-22 Louise Bennett RESERVED # 1956	45-23	45-24 available
45-25 Nishimura, Joyce & Steve Reserved Rcpt #24-08	45-26	45-27 Cini, Michael & Julie Rcpt #20-20 Reserved	45-28	45-29 Nishimura, Joyce & Steve Reserved Rcpt #24-08	45-30	45-31 McCabe, George McCabe, Regina Kummerow, Deborah Reserved Rcpt #22-07	45-32	45-33 available	45-34 Peyton, Larry Peyton, Barbara Reserved Rcpt #22-06	45-35	45-36 available
45-37 Mueller, Jennifer Casket 2021	45-38	45-39 Nishimura, Joyce & Steve Reserved Rcpt #24-08	45-40	45-41 Nishimura, Joyce & Steve Reserved Rcpt #24-08	45-42	45-43 McCabe, George McCabe, Regina Kummerow, Deborah Reserved Rcpt #22-07	45-44	45-45 available	45-46 Peyton, Larry Peyton, Barbara Reserved Rcpt #22-06	45-47	45-48 available
45-49 Mueller, David J. Casket 2021	45-50	45-51 Parker, John & Christine Rcpt #22-15	45-52	45-53 Longstreet, Harry & Renee Reserved Rcpt #24-01	45-54	45-55 Lease, Kevin & Leah Reserved Rcpt #24-02	45-56	45-57 available	45-58 Peyton, Larry Peyton, Barbara Reserved Rcpt #22-06	45-59	45-60 available
45-61 available	45-62 available	45-63 available	45-64 available	45-65 Longstreet, Harry & Renee Reserved Rcpt #24-01	45-66	45-67 Lease, Kevin & Leah Reserved Rcpt #24-02	45-68	45-69 available	45-70 available	45-71 available	45-72 available
45-73 available	45-74 available	45-75 available	45-76 available	45-77 available	45-78	45-79 Lease, Kevin & Leah Reserved Rcpt #24-02	45-80	45-81 Harui, Roger Webster, Noah Reserved Rcpt #24-03	45-82 Thomas Reserved Rcpt #24-05	45-83 Thomas, Lance	45-84 Thomas Reserved Rcpt #24-05

Drawing Not To Scale

Port Blakely Cemetery

Half Plots

Section 46



1-46 Bredice, Sunny Rcpt #19-34	2-46	3-46 Shelton, Nancy E. Rsrvd Rcpt #21-23	4-46 Hooper, Diane L. Rsrvd Rcpt #21-22	5-46 Smith, Marc & Irene Reserved Rcpt #20-15	6-46	7-46 Smith, Marc & Irene Reserved Rcpt #20-15	8-46
9-46 Bredice, Sunny Rcpt #19-34	10-46	11-46 Keyes, Greg & Pam Rcpt #19-32 Reserved	12-46	13-46 Smith, Marc & Irene Reserved Rcpt #20-15	14-46	15-46 Smith, Marc & Irene Reserved Rcpt #20-15	16-46
17-46 Bredice, Sunny Rcpt #19-34	18-46	19-46 Keyes, Greg & Pam Rcpt #19-32 Reserved	20-46	21-46 Podesla, Kim Reserved Rcpt #19-19	22-46	23-46 Podesla, Kim Reserved Rcpt #19-20	24-46
25-46 Bredice, Greg Rcpt #19-35	26-46	27-46 Bredice, Greg Rcpt #19-35	28-46 Lynn & George Fraser RESERVED #1948	29-46 Jellicoe, Robert Cremains	30-46	32-46 June Murial Mathisen Buried 1/22/2010 casket	32-46
33-46 Bredice, Greg Rcpt #19-35	34-46	36-46 Mancuso, Elizabeth	37-46 Barbara Tarabochia RESERVED # 1989	38-46	39-46 Snow, Christopher Snow, Cameron Reserved Rcpt #21-14	40-46	
41-46 Henry, Toni L. Cremains	42-46	43-46 Brown, Larry Brown, Katie Rcpt #20-26	44-46 Gagnon, Janet	45-46 Steve Tarabochia	46-46	47-46 Snow, Christopher Snow, Cameron Reserved Rcpt #21-14	48-46
49,50-46 Howard Springer Died 7/18/12 cremains Jean E. Springer Died 11/6/2018 cremains	51-46 McCann, Diane 2021	52-46	53-46 David Tarabochia Buried 12/5/2012 Casket	54-46	55-46 Shaffer Rcpt #19-30	56-46 Currie, Anna 2020	

Port Blakely Cemetery

Full Plots

Section 47



1-47 David B. Mc Callum Reserved	2-47 Charlotte Hunt Casket 2015 # 1969	3-47 William Quincy Thornberg Died 10/30/ 2009 Buried 2009 Casket	4-47 Reserved Arthur Hanlon Rcpt #18-19	5-47 Charles & Elisa Oliver RESERVED # 1950	6-47 Michael Joseph Sharp Casket 2016 # 1977
7-47 Nancy Blessworth Burial Michael Blessworth Cremains	8-47 John & Brandi Hunt RESERVED # 1969	9-47 Corbin, William & Mary Reserved Rcpt #21-30	10-47 Reserved Mary Ann Hanlon Rcpt #18-19	11-47 Samuel Oliver Casket 2014 # 1950	12-47 Boundy, Ross Rcpt #19-27
13-47 David B. McCallum Reserved	14-47 John & Brandi Hunt RESERVED # 1969	15-47 Corbin, William & Mary Reserved Rcpt #21-30	16-47 Palmason, Suzanne Reserved Rcpt #23-08	17-47 Charles & Elisa Oliver RESERVED # 1950	18-47 Boundy, Ross Rcpt 19-27
19-47 Chadwick, Kent & Catherine Rcpt #22-03	20-47 Evjen, Yvonne S. Burial 2022	21-47 Winegarden, Emma J. Cremains	22-47 Palmason, Stephen T. Cremains 2023	23-47 Harrison, Lynne W. Casket 2021	24-47 Boundy, Ross Rcpt #19-27
25-47 Chadwick, Alexandria S. Chadwick, Luke Yen-Hui	26-47 Evjen, Kenneth 2023 Burial	27-47 a	28-47 a	29-47 Hensley, Grace Reserved Rcpt #21-28	30-47 Boundy, Sharon Rcpt 19-28
31-47 Tanner, Susan Reserved Rcpt #23-30	32-47 a	33-47 a	34-47 a	35-47 Hensley, Joseph Hensley, Grace Reserved Rcpt #23-06	36-47 Boundy, Sharon Rcpt #19-28
37-47 a	38-47 a	39-47 a	40-47 a	41-47 Schwarckopf, Kevin Reserved Rcpt #22-08	42-47 Boundy, Sharon Rcpt #19-28

Port Blakely Cemetery

Full Plots

Section 48



48-1 Cyger, Erin Rcpt #22-17	48-2 a	48-3 a	48-4 Given, Steven D. Cremains 2023	48-5 Reserved Rohrscheib Rcpt #19-16	48-6 RESERVED Faltermeier #1927
48-7 Cyger, Michael Rcpt #22-17	48-8 Jeanne F. Kane Casket Michael J. Kane Cremains	48-9 Hettich, William & Betsy Sara-Anne H Wietholter Reserved Rcpt #23-20	48-10 Elizabeth "Betsy" Murphy Buried Casket	48-11 a	48-12 RESERVED Faltermeier #1927
48-13 Logan Schmidt	48-14 a	48-15 Hettich, William & Betsy Sara-Anne H Wietholter Reserved Rcpt #23-20	48-16 Jim Schwank held for Janet Holt # 1954	48-17 Patrick Gaynor Middleton Casket 2015 # 1970	48-18 RESERVED Faltermeier #1927
48-19 Buried 5/05/2009-Rcpt.1831 Helen Suryan	48-20 Barbara MacLearnsberry Casket	48-21 Marjorie Beer Died 12/24/2011 Casket	48-22 Michael & Diane Schwank RESERVED # 1942 September 24,2013	48-23 Vivian K. Adams Buried June 1 st 2013 Casket	48-24 Joseph E. Faltermeier Buried October 5 th 2012 Casket # 1927
48-25 Buried 10/03/2009-Rcpt1831 Ivan Suryan	48-26 Mathew Charles MacLearnsberry Casket 2016 # 1975	48-27 Rosalie A. Euchner # 1938 2013	48-28 Michael & Diane Schwank RESERVED # 1942 September 24,2013	48-29 Adams, John Q. 2020 Casket	48-30 RESERVED Faltermeier #1927
48-31 Rye, Leona Casket 2023	48-32 Swanson, Brittany Reserved Rcpt #21-01	48-33 RESERVED Euchner	48-34 Mcmahon, Ann Marie & Gary Reserved Rcpt #21-02	48-35 Mitchell, Terence & Kathleen Rcpt #22-20	48-36 RESERVED Faltermeier #1927
48-37 Swanson, Brittany L. Reserved Rcpt #20-12	48-38 Swanson, Brittany Reserved Rcpt #21-01	48-39 RESERVED Euchner	48-40 Colleen C. Dooley Steven J. Dooley	48-41 Beverly Cook Casket 2015 # 1959	48-42 RESERVED Faltermeier #1927

Port Blakely Cemetery

Half Plots

Section 49



49-1 49-2 Adele O. Duprey Buried 7//9/2011 Cremains		49-3 Johnston, Stanley and Linda Lou Cremains	49-4 49-5 Susan Kristopherson RESERVED 2015 #1951		49-6 49-7 Paul B. Larsen RESERVED # 1923		49-8 Eva Marie Gerdts # 1963	49-9 Anne Marie Borecki Reserved	49-10 Anne Marie Borecki Reserved	49-11 Noble Reserved	49-12 Janet Storm Noble
49-13 49-14 Jeffry E. Powers Debra L. Haase RESERVED # 1947		49-15 49-16 Jeffry E. Powers Debra L. Haase RESERVED # 1947		49-17 49-18 Lisa Kim Torrez Casket		49-19 49-20 Chang, Jacqueline Rcpt #21-04 Reserved		49-21 Pam Robinson Reserved # 1979	49-22 Pam Robinson Reserved # 1979	49-23 Noble Reserved	49-24 Noble Reserved
49-25 49-26 Jeffry E. Powers Debra L. Haase RESERVED # 1947		49-27 49-28 Jeffry E. Powers Debra L. Haase RESERVED # 1947		49-29 49-30 Jessie Torrez RESERVED		49-31 49-32 Chang, Jacqueline Rcpt #21-04 Reserved		49-33 49-34 Carolyn Gayle Frame Casket 2016 # 1978		49-35 Available	49-36 Available
49-37 49-38 Browning Family Reserved Rcpt #23-29		49-39 a	49-40 a	49-41	49-42	49-43 49-44 Chi, Cheul Nam Cremains 2022		49-45 49-46 Charles D. Frame Cremains		49-47 a	49-48 a
49-49 49-50 Browning Family Reserved Rcpt #23-29		49-51 a	49-52 a	49-53 a	49-54 a	49-55 49-56 Chang, Jacqueline Reserved Rcpt #23-15		49-57 a	49-58 a	49-59 a	49-60
4961 a	49-62 a	49-63 a	49-64 a	49-65 a	49-66 Nicholas Rothbaum Reserved	49-67 Jeremy Leslie Rothbaum Reserved	49-68 Liberty Rothbaum Reserved	49-69 a	49-70 a	49-71 a	49-72 a
49-73 a	49-74 a	49-75 a	49-76 a	49-77 a	49-78 a	49-79 a	49-80 a	49-81 a	49-82 a	49-83 a	49-84 a

Port Blakely Cemetery

Half Plots

Section 50



50-1 Joseph & Kathleen Hampton RESERVED # 1955	50-2	50-3 a	50-4 a	50-5 Melton G. Bockman Burial Rcpt #19-03	50-6	50-7 Davis Family Trust RESERVED # 7116	50-8	50-9 James-Ruud Rcpt #22-02	50-10	50-11 Mackenzie, Wanda J. 2022	50-12
50-13 Joseph & Kathleen Hampton RESERVED # 1955	50-14	50-15 Johns Family RESERVED # 1976	50-16	50-17 Marian F. Bockman Burial 2019	50-18	50-19 Davis Family Trust RESERVED # 7166	50-20	50-21 a	50-22 a	50-23 Mackenzie, David G. Rcpt #22-13	50-24
50-25 Christopher & Holly Jacobsen Rcpt #19-15	50-26	50-27 Johns Family RESERVED # 1976	50-28	50-29 a	50-30 a	50-31 Davis Family Trust RESERVED # 7166	50-32	50-33 a	50-34 a	50-35 a	50-36 a
50-37 Christopher & Holly Jacobsen Rcpt #19-15	50-38	50-39 David Homer Johns Casket 2016 # 1976	50-40	50-41 D. Jacobs RESERVED # 1944	50-42	50-43 Davis Family Trust RESERVED # 7166	50-44	50-45 Lawrence, Mark & Sandra Reserved Rcpt #20-08	50-46	50-47 a	50-48 a
50-49 Christopher & Holly Jacobsen Rcpt #19-15	50-50	50-51 Katherine Johns 2023 Casket	50-52	50-53 Jacobs, Mary F, 2023 Casket	50-54	50-55 Jane A. Davis 1997 Ralph C. Davis 1985 # 7166	50-56	50-57 Lawrence, Mark & Sandy Reserved Rcpt #20-08	50-58	50-59 Louis, Maurie Reserved Rcpt #21-18	50-60
50-61 Barbara A. Miller Casket 2021	50-62	50-63 Johns Family RESERVED # 1976	50-64	50-65 Georgia A. Vincent Reserved #1993 2017	50-66 Jeffery S. Vincent Reserved #1993 2017	50-67 Jane-ann Hover 2016 Rcpt #1977	50-68	50-69 Dodd, Carolyn Burial Rcpt #20-07	50-70	50-71 Louis, Maurie Reserved Rcpt #21-18	50-72
50-73 Robert S. Miller Casket 2015 # 1918	50-74	50-75 Wanda Mae Vincent Casket 2014 # 1945	50-76	50-77 Georgia A. Vincent Reserved #1980 2016	50-78 Jeffery S. Vincent Reserved #1980 2016	50-79 Robert C. Hover RESERVED # 1977	50-80	50-81 Daniel Haller Rcpt 18-08	50-82 a	50-83 Manning, Celia J. 2021	50-84

Drawing Not To Scale

Port Blakely Cemetery

Full Plots

Section 51



51-1 Theodorus Ruys Casket 2015 # 1953	51-2 Olga Ruys RESERVED # 1962	51-3 Olga Ruys RESERVED # 1962	51-4 Neil E. Atwood	51-5 Jeff Moniz RESERVED # 1981	51-6 Jonathon Earle Pettit # 1939 2013 Cremains
51-7 Olga Ruys RESERVED # 1962	51-8 Olga Ruys RESERVED # 1962	51-9 Olga Ruys RESERVED # 1962	51-10 Vaughan, Brad Reserved Rcpt #21-32	51-11 Tyler Michael Moniz Cremains 2016 # 1981	51-12 RESERVED Barbara Braun Pettit #1941 2013
51-13 Henshaw, Kay Reserved Rcpt #23-25	51-14 Day, Phillip & Karen Rcpt #22-09	51-15 a	51-16 Vaughan, Christi Reserved Rcpt #21-32	51-17 Jeff Moniz RESERVED # 1981	51-18 William Pettit Rcpt 19-10 RESERVED
51-19 Henshaw, Patricia Reserved Rcpt #23-28	51-20 Day, Phillip & Karen Rcpt #22-09	51-21 a	51-22 a	51-23 Mackey, Jim & Bonnie Reserved Rcpt #23-19	51-24 Katherine Pettit Cremains 2021
51-25 a	51-26 a	51-27 a	51-28 a	51-29 a	51-30 William Pettit Rcpt 19-10 RESERVED
51-31 a	51-32 a	51-33 a	51-34 a	51-35 a	51-36 a
51-37 a	51-38 a	51-39 a	51-40 a	51-41 a	51-42 a

Port Blakely Cemetery

Full Plots

Section 52



1-52 available	2-52 available	3-52 available	4-52 available	5-52 Kirk T. Jones 2018 Rcpt #18-38	6-52 available
7-52 available	8-52 available	9-52 available	10-52 available	11-52 available	12-52 available
13-52 a	14-52 a	15-52 a	16-52 a	17-52 a	18-52 a
19-52 a	20-52 a	21-52 a	22-52 a	23-52 a	24-52 Karen Rogenhild Holcomb J. Byron Holcomb Sarah Joan & Julia Anne Holcomb twin babies
25-52 a	26-52 a	27-52 a	28-52 a	29-52 a	30-52 Morrill, Betty Rae Casket 2019
31-52 Johnstone, Murray & Jeanie Reserved Rcpt #23-12	32-52 a	33-52 Penn, Tom & Kathy Reserved Rcpt #23-07	34-52 a	35-52 George A. Fisher Casket	36-52 Morrill, Lawrence W. Morrill, Trish Rcpt #19-31
37-52 Johnstone, Murray & Jeanie Reserved Rcpt #23-12	38-52 a	39-52 Penn, Tom & Kathy Reserved Rcpt #23-07	40-52 a	41-52 Rita Erickson Fisher Casket 2015 # 1972	42-52 a

Port Blakely Cemetery

Half Plots

Section 53



1-53 2-53 Kirkby, Rick & Maryann Rcpt #20-19		3-53 4-53 Steven Thomas Kristina Thomas Reserved Rcpt 18-11		5-53 6-53 Sandri, Piero 18-03 Reserved		7-53 8-53 Steven B. Lowe 2018 Rcpt 18-04		9-53 10-53 George M. Kirchoff 2018 Rcpt #18-14		11-53 12-53 Asja Saulitis 2015	
13-53	14-53	15-53 16-53 Steven Thomas Kristina Thomas Reserved Rcpt 18-11		17-53 18-53 Sandri, Piero 18-03 Reserved		19-53 20-53 Lowe, Alaire 2018 Rcpt 18-04 Reserved		21-53 22-53 Ila Kirchoff Reserved Rcpt #18-14		23-53 24-53 Kara Mohit Reserved Rcpt #19-02	
25-53 26-53 Miller, Kim (family) Reserved Rcpt #18-37		27-53 28-53 Hoots, William Hoots, Marilyn Reserved Rcpt #18-28		29-53 30-53 Newquist (Ababneh), Mary E, Cremains 2021		31-53 32-53 Dombrowski, Mary Olsen, James Rcpt 18-30		33-53 34-53 Ila Kirchoff Reserved Rcpt #18-14		35-53 Pierce, Robert Pierce, Dorothy Rcpt #21-27	36-53 Blackmore Reserved Rcpt #21-25
37-53 38-53 Miller, Kim (family) Reserved Rcpt #18-37		39-53 a	40-53 a	41-53 42-53 Soames, Steve & Sharon Reserved Rcpt #21-12		43-53 44-53 Dombrowski, Mary Olsen, James Rcpt 18-30		45-53 46-53 Ila Kirchoff Reserved Rcpt #18-14		47-53 Rose, Zachary 2021	48-53 Not For Sale
49-53 50-53 Mundorf, Terry & Marina Reserved Rcpt #19-22		51-53 52-53 Mundorf, Terry & Marina Reserved Rcpt #19-22		53-53 a	54-53 a	55-53 56-53 Dombrowski, Mary Olsen, James Rcpt 18-30		57-53 58-53 Kelleher, K./Dyste, Richard Jack Reserved Rcpt #21-17		59-53 Nelson, Rose L. <i>Memorial</i>	60-53 Charles John Coffyn 2015 # 1971
61-53 a	62-53 a	63-53 a	64-53 a	65-53 66-53 Rimando Sr., Rodrigo Cremains 2022		67-53 68-53 Dombrowski, Mary Olsen, James Rcpt 18-30		69-53 70-53 Kelleher, Catherine Reserved Rcpt #21-16		71-53 72-53 Mary Jo Watson Rcpt #18-23	
73-53 a	74-53 a	75-53 a	76-53 a	77-53 a	78-53 a	79-53 80-53 Olsen, Mary Ellen 2018 Margaret Victoria Olsen Ellen Olsen		81-53 82-53 James McNett Boon-Keng Woo Rcpt #18-31		83-53 84-53 Frederick Russell Cremains 2016 # 1983	