

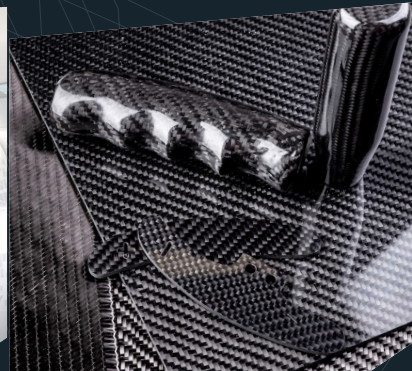
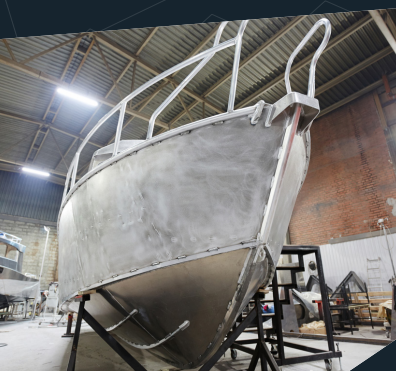


**ADVANCED  
MANUFACTURING  
SOLUTIONS**  
A Hybrid Technology Company

**MULTICAM**  
A Kongsberg PCS Company

**ACS MULTICAM CNC ROUTERS**  
**TECHNOLOGY FOR ADVANCED INDUSTRIAL MANUFACTURING**

**Automation made simple**  
**featuring the best value**  
**in the industry**



## INDUSTRY EXPERTISE

Delivering the ACS Suite of CNC capabilities for companies serving Advanced Industrial Manufacturing for Traditional Manufacturing and Fabrication sectors, Aerospace, Defense & Automotive markets, Semiconductor, Oil & Gas, Commercial Marine, RV, Composites and Industrial Tooling, Jigs & Fixtures.



A Trusted Partner Serving Customers in the Pacific Northwest (US) and Western Canada.

# APEX 1R<sup>G2</sup>

The ultimate choice for end-users seeking quality, performance, and unbeatable value.

The Apex1R-G2 CNC Router is tailored with small businesses and shops in mind, delivering the same precise cutting and smooth motion you've come to expect from MultiCam's industry-leading routing systems.

The Apex1R-G2 CNC router offers a range of standard features typically found only on higher-priced machines. Thanks to MultiCam's advanced manufacturing processes, you get exceptional quality and performance at an affordable price.

## 1 Impeccable Finishes for Diverse Applications

Multiple spindle and knife options for diverse material cutting.

## 2 Enhanced Durability for Superior Routing Quality

Built on a robust American-made, all-steel tube frame, paired with a high-precision gearbox and finely tuned servo system.

## 5 User-Friendly Operation

MultiCam's EZ Control operator interface allows you to begin routing immediately, minimizing disruptions to your workflow.

## 4 Newly Redesigned Dust Boot

This enhanced system maximizes particulate pick up, minimizes clean-up, and speeds up sheet-to-sheet transitions for increased efficiency.

## 3 Hands-Free Material Surface Probe & Tool Calibration

Enhances both efficiency and safety by automating the tooling length setup process.

## 6 Optional Pop-Up Pins

Three (3) Front Right Pins for Material Alignment.

### APEX 1R-G2

#### EFFECTIVE CUT AREAS

48" x 48" to 80" x 144"  
\*Progressive Configurations

#### SPINDLE SIZE

Collet Spindle: 4HP – 7.5HP  
ATC HSK Spindle: 10HP

#### SPINDLE RPM

4,000 to 24,000  
\*Variable RPM

#### OPERATIONAL TANGENTIAL KNIFE STATIONS

2mm/5mm Electric Oscillating & Drag Knife  
\*Combo Electric & Drag Knife Stations Available

#### TOOL CHANGING CAPACITY

Spindle – 6 to 12 Linear  
Knife – 6 to 8 Linear  
\*Combo Spindle Knife Tool Changing  
\*Additional Tooling Capacity Upon Request

#### Z AXIS

Clearance = 4 in.  
Stroke = 8 in.

## APEX1R-G2

**MULTICAM**  
A Kongsberg PCS Company

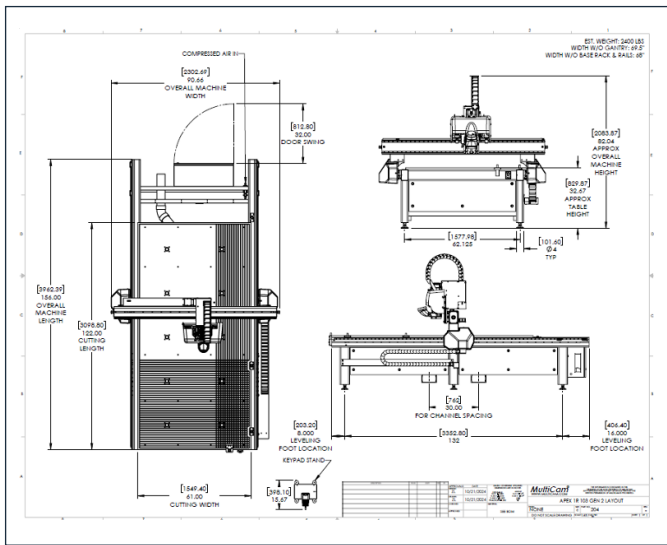
### Apex1R-G2 CNC Options

- 4HP to 10HP Spindles
- 2 mm / 5 mm Electric Oscillating Knife
- Tangential Knife Cutters
- Automatic Knife Tool Changer
- Linear Automatic Tool Changer
- Coolant Mist Systems for Non-Ferrous Metals
- MultiVision Digital Registration System
- Pop-up Alignment Pins
- Vacuum Table & Pumps
- Laser Pointer

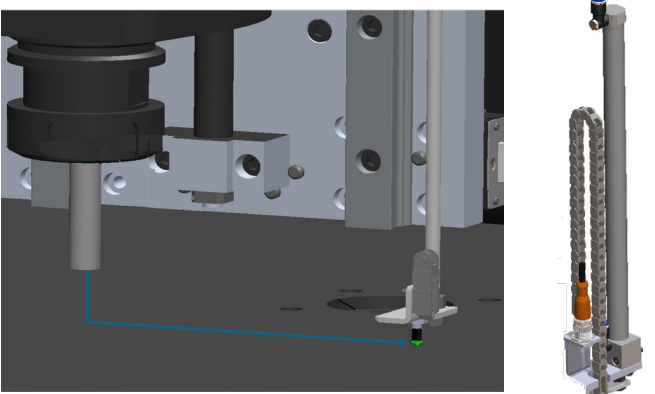
### Specifications

Max Material Thickness	3" 76 mm
Gantry Height	7" 178 mm
Repeatability	+/-0.001" +/-0.025 mm
Cutting Speed	1300 IPM 550.3 mm/sec.
Rapid Traverse	1838 IPM 778 mm/sec.
Drive System (X,Y)	Helical
Drive System (Z)	Ball Screw
Standard Work Surface	1" Phenolic 25.4 mm Phenolic

### Standard Apex1R Configuration

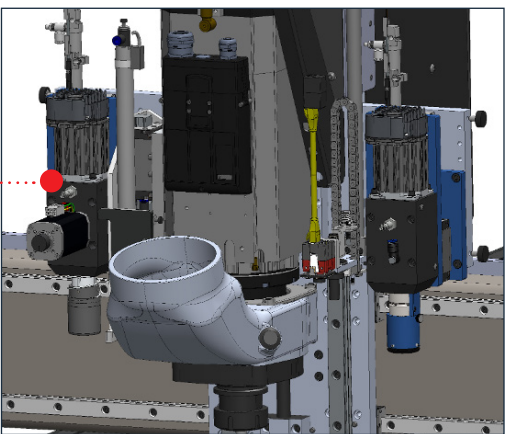


### Standard Automatic Surface Probe



### Apex1R Station Design

- Auto Tool Calibration & Surface Probe w/ Optional Cognex Camera
- Spindle Station – Collet or ATC Spindle
- Optional:
  - Tangential Oscillation Knife Station
  - Tangential Drag Knife Station





# APEX3R EVO

A new evolution in highperformance routing. The Apex3R Evo provides an Evolutionary leap in technology increasing cut capabilities to a wider variety of materials.

Experience unparalleled high-performance routing with the Apex3R Evo, MultiCam's latest flagship CNC Router. Delivering exceptional cut quality and edge finish at an affordable price.

Designed and engineered to cater to a wide range of applications, the incredibly versatile Apex3R Evo offers excellent routing capabilities for thick or dense substrates, delivers precise edge quality, capable of mirror edge finish on aluminum and clear edge on acrylic.

## 1 Durable Construction for Superior Routing Quality

The Apex3R Evo's robust all-steel frame, high-precision gearbox, and a tightly tuned servo system ensure accurate, pristine cuts.

## 2 Cut More — Better, and Faster

Collet and ATC spindle options range from an impressive 24-32K RPM and up to 13.3 HP, enabling you to tackle a wide range of jobs faster and with greater precision.

## 3 Tapping Made Easy

The pneumatic quick change rotary unit adds knife and tapping tool change capabilities.

## 4 Enhanced Efficiency

The hands-free surface probe and new camera system simplify job set up and reduce errors.

### APEX 3R EVO

#### EFFECTIVE CUT AREAS

50" x 103" to 98" x 246"  
\*Progressive Configurations  
\*Custom Configurations Available

#### SPINDLE SIZE

High Speed ATC Spindle:  
HSK 32  
5.5HP – 8.5HP  
ATC Spindle: 13HP  
HSK 63

#### SPINDLE RPM

High Speed – 4,000  
to 32,000  
HSK Spindle – 4,000  
to 24,000  
\*Variable RPM

#### OPERATIONAL TANGENTIAL KNIFE STATIONS

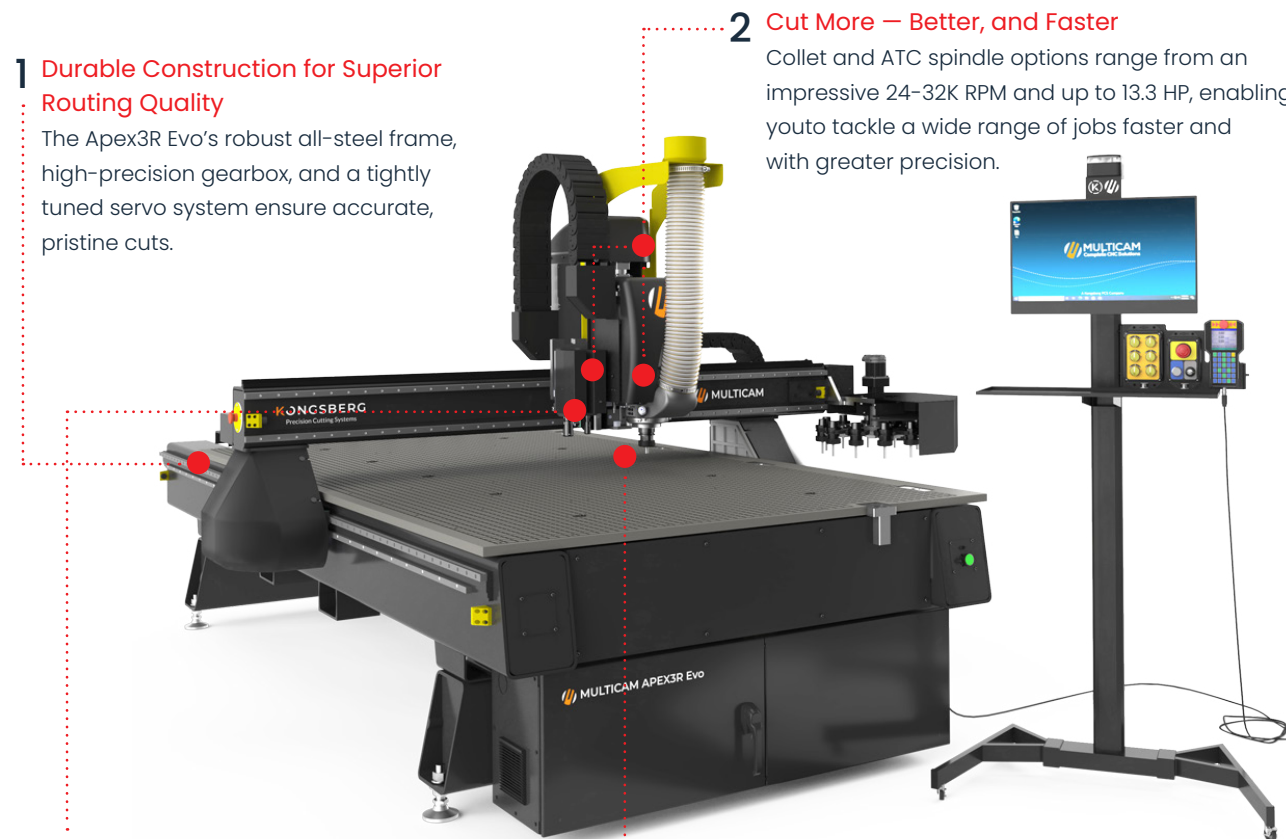
2mm/5mm Electric  
Oscillating, Drag Knife  
Drill & Tap  
\*Combo Electric, Drag Knife,  
Drill & Tap Stations Available

#### TOOL CHANGING CAPACITY

Spindle – 6 to 14 Linear  
Spindle – 12 Position Rotary  
Knife – 6 to 10 Linear  
\*Combo Spindle Knife Tool  
Changing  
\*Additional Tooling Capacity  
Upon Request

#### Z AXIS

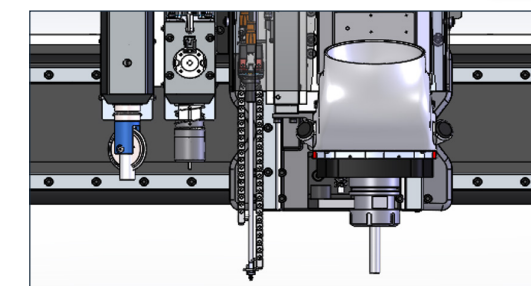
Clearance = 6 in.  
Stroke = 12 in.



## APEX3R EVO



### Modular Station Design



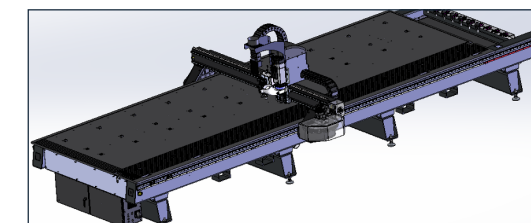
- Auto Calibration & Surface Probe
- Spindle Station w/ Optional Cognex Camera
- Tangential Electric Oscillating Knife Station
- Tangential Drag Knife Station
- Drill & Tap Station

### Quick Change Knife or Tapping Station



- Quick Change Knife OR Tapper
  - Both thread mill and tapping
  - Delivering more automation and reducing operator intervention
  - Less secondary process time, especially for blind hole tapping
  - Tapper automatically includes misting unit for spindle & tapper

### Large Format Panel Cutting



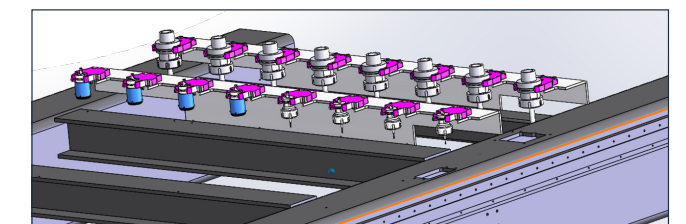
- Effective Cut Area = 7ft. x 20ft.

**MULTICAM**  
A Kongsberg PCS Company

### Productivity Options Include:

- Pneumatic Quick Change Rotary Unit for Knife and Tapping Tools
- Automatic Drag Knife Changer
- Electric Oscillating Knives
- Linear Tool Changer
  - › 6 – 22 Locations
- Rotary Tool Changer
  - › 12 Locations
- Motorized Dust Boot with Integrated Coolant Mist System
- Pop-Up Alignment Pins
- MultiVision Digital Registration System
- Laser Pointer
- 24" Computer Workstation

### Single & Dual Linear Tool Changer



- Back Row Spindle Tools: HSK 32 or HSK 64 Tools
- Front Row Knives & Tapping Tools

### Specifications

Max Material Thickness	4" 101 mm	5" 127 mm
Gantry Height	6" 152 mm	8" 203 mm
Cutting Speed	1950 IPM 825.5 mm/sec.	
Rapid Traverse	2758 IPM 1167.6 mm/sec.	
Repeatability	+/-0.001" +/-0.025 mm	
Drive System (X,Y)	Helical	
Drive System (Z)	Ball Screw	
Standard Work Surface	1" Phenolic 25.4 mm Phenolic	

Stock machine comes with standard 6" gantry clearance.

ACS. One Partner for Sales & Service in the Pacific Northwest (US) & Western Canada.



[www.acs-iws.com](http://www.acs-iws.com)

[www.acs.ca](http://www.acs.ca)

[www.acscolabpartners.com](http://www.acscolabpartners.com)



# SERIES 5K

Unmatched advanced industrial manufacturing capabilities for heavy-duty applications & fabrication.

A highly versatile and powerful machine tool that provides a range of benefits. It is designed to withstand the most challenging industrial environments, ensuring maximum durability and longevity.

From aluminum to woodworking fabrications, and everything in between, this machine is capable of handling a wide range of materials and applications. Its versatility makes it the perfect solution for businesses looking to streamline their production processes onto a single, powerful machine.

## 1 High Horsepower Spindle

Accommodate larger diameter tooling with a 13.4 or 20 HP spindle to cut dense materials that demand higher torque capacity.

## 2 Motion Platform

Heavy-duty servo motors and high torque precision gearbox assemblies that are designed to optimize performance, minimize vibration, and improve acceleration.

## 3 User-Friendly Operator Interface

The EZ Control interface provides operators with an intuitive platform to set up, configure, and operate the machine. This easy-to-use interface streamlines the manufacturing process and ensures maximum efficiency and output.

## 4 Automatic Tool Changer (ATC)

Optimized for Faster Throughput.



### 5000 SERIES

#### EFFECTIVE CUT AREAS

50" x 100" to 120" x 600"  
\*Progressive Configurations  
\*Custom Configurations Available

#### SPINDLE SIZE

ATC HSK Spindle:  
13HP – 20HP

#### SPINDLE RPM

HSK Spindle  
4,000 to 24,000  
\*Variable RPM

#### OPERATIONAL TANGENTIAL KNIFE STATIONS

Electric Oscillating,  
Drag Knife, Drill & Tap  
\*Combo Electric, Drag Knife,  
Drill & Tap Stations Available

#### TOOL CHANGING CAPACITY

Spindle – 12 Position Rotary  
Spindle – 6 to 14 Linear  
\*Combo Spindle Knife Tool  
Changing  
\*Additional Tooling Capacity  
Upon Request

#### Z AXIS

Clearance = 8 in.  
Stroke = 16 in.



## 5000 SERIES

**MULTICAM**  
A Kongsberg PCS Company

No machine offers more features than the innovative & versatile MultiCam 5000 Series Router for Advanced Industrial Manufacturing.

Featuring a robust welded steel frame and spindle options of up to 20 HP, the 5000 Series CNC Router is a long-standing favorite in the industry.



### Base Frame. Solid Heavy-Duty Construction

The base frame is a one-piece plate steel frame that is welded, stress-relieved and precision machined. One-piece construction allows for a very accurate, rigid and smooth cutting system, while essentially removing the possibility for any after installation errors that could affect the performance and accuracy of the system.



### Gantry: Engineered for Performance

The gantry is fabricated from 8" x 12" structural steel tubing with 0.625" welded bard stock supporting the linear rails. This assembly is stress relieved prior to precision machining. Y axis features 25-mm linear rails, ac brushless servos, precision planetary gearboxes plus helical rack and pinion.



### Gantry Supports: High Strength, Minimal Vibration

The gantry supports are precision machined from cast iron tooling plate, using a 4-Axis horizontal machining center to guarantee perpendicularity. The cast iron support has inherent vibration dampening characteristics while giving rigid support to the gantry tube.



### Router Spindles: High Speed for Increased Productivity

The standard spindle is an air cooled, 5.5 HP ISO25, 24,000 RPM, 100% Duty Cycle spindle with a tool diameter capacity of up to 5/8" (16mm). Other available options include a 10 HP ATC spindle.

### Specifications

Max Material Thickness	6" 152 mm	8" 203 mm
Gantry Height	8" 203 mm	12" 304 mm 16" 406 mm
Cutting Speed	1920 IPM 812.8 mm/sec.	
Rapid Traverse	2715 IPM 1149.4 mm/sec.	
Repeatability	+/-0.001" +/-0.025 mm	
Drive System (X,Y)	Helical	
Drive System (Z)	Ball Screw	
Standard Work Surface	1" Phenolic 25.4 mm Phenolic	

Stock machine comes with standard 8" gantry clearance.



### Z-Axis Assembly: Precise & Robust

The 5000 Series Ball Screw Assembly has an available 17" of stroke that is ideal when using specialty tools. It allows for the option of adding larger gantry clearance in the field. Gantry riser blocks are available to increase the throat of the machine by 4" or 8".





**ADVANCED  
MANUFACTURING  
SOLUTIONS**  
A Hybrid Technology Company

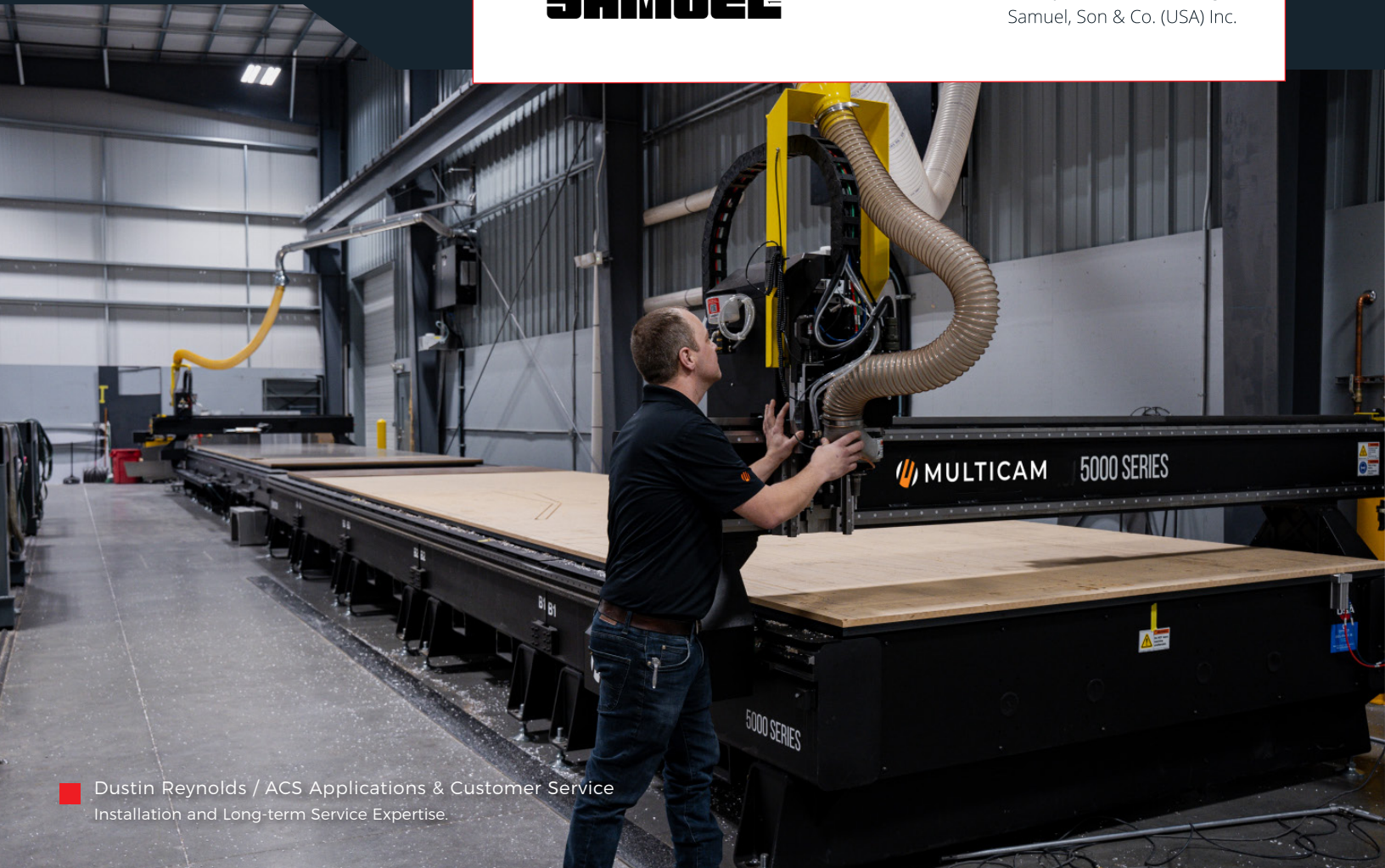
## ACS Applications Specialists

ACS is a team of collaborating application specialists, providing curated Advanced Industrial Manufacturing Solutions with integrated consulting and long-term services and support. The technologies and services that ACS offers to established manufacturers in the Pacific Northwest and Western Canada. We provide the highest level of expertise, application knowledge and ongoing onsite regional service and partnership, focused on helping build growth for our customers through advanced industrial manufacturing technology applications.

**“** As each of you very well know, any piece of equipment is only as good as the company that stands behind it. Your exceptional service and equipment knowledge provides Samuel with the solutions we need! **”**



- Mike Van Dyke / General Manager  
Samuel, Son & Co. (USA) Inc.



Dustin Reynolds / ACS Applications & Customer Service  
Installation and Long-term Service Expertise.



1135 Pacific Place, Unit #117 Ferndale, Washington 98248



# Let's Connect.

[www.acs-iws.com](http://www.acs-iws.com)

[www.acs.ca](http://www.acs.ca)

[www.acscolabpartners.com](http://www.acscolabpartners.com)