



**PREDATOR**  
BATTERIES LTD



# PR12-115-AGM

**12.8V**  
**105 AH @C20**  
**115 AH @C100**

VRLA AGM deep cycle, sealed, lead acid battery.

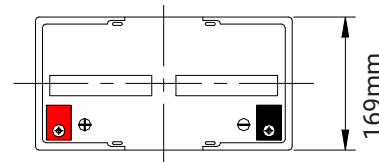
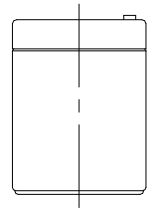
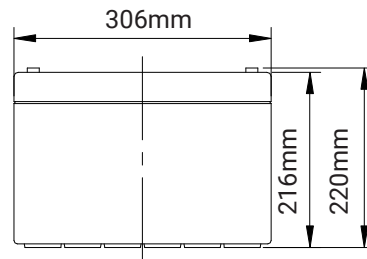
## BATTERY CONSTRUCTION

Component	Positive plate	Negative plate	Container	Cover	Safety valve	Terminal	Separator	Electrolyte
Raw material	Lead dioxide	Lead	ABS	ABS	Rubber	Copper	Fiberglass	Sulfuric acid

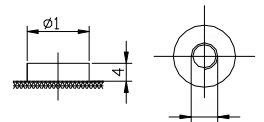
## BATTERY FEATURES

- Positive and Negative plates in lead-calcium tin alloy.
- Deep Cycle
- 600 cycles at 70% DOD
- Design life 10 years
- Low self discharge
- 6 months shelf life @ 20°C
- Superior energy density
- 3 year manufacturer warranty

## DIMENSIONS:



Terminal (M8)



## PERFORMANCE SPECIFICATIONS

<b>Nominal Voltage</b>	12 V
<b>Rated Capacity</b>	105 AH @ C20 / 115 AH @ C100
<b>Cycle Life (@DOD70%)</b>	600 Cycles
<b>Approximate Weight</b>	61.7 lbs (28 kg)
<b>Internal Resistance</b>	≤ 5 mΩ
<b>Max Charge Current</b>	22.5 A
<b>Max Discharge Current</b>	850 A (5s)
<b>Charging Voltage</b>	14.4-14.7 v cycle use / 13.6-13.8 v standby use
<b>Series &amp; Parallel Connection</b>	4 in series unlimited in parallel
<b>Operating Temperature Range</b>	
Charge	-10°C to 60°C
Discharge	-20°C to 60°C
Storage	-20°C to 60°C
<b>Self-Discharge Rate</b>	≤3%/month@ 20°C
<b>Long Term Storage</b>	Charge every 6 months
<b>Terminal Type</b>	M8



**PREDATOR**  
BATTERIES LTD

# PR12-115-AGM

**12.8V**  
**105 AH @C20**  
**115 AH @C100**

VRLA AGM deep cycle, sealed, lead acid battery.

