



PREDATOR
BATTERIES LTD

PR12-130-AGM

12.8V
114 AH @C20
130 AH @C100

VRLA AGM deep cycle, sealed, lead acid battery.

BATTERY CONSTRUCTION

| Component | Positive plate | Negative plate | Container | Cover | Safety valve | Terminal | Separator | Electrolyte |
|--------------|----------------|----------------|-----------|-------|--------------|----------|------------|---------------|
| Raw material | Lead dioxide | Lead | ABS | ABS | Rubber | Copper | Fiberglass | Sulfuric acid |

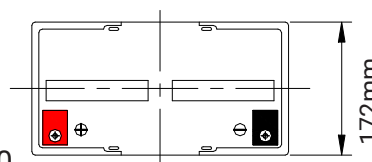
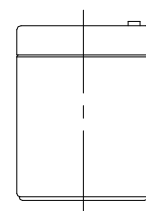
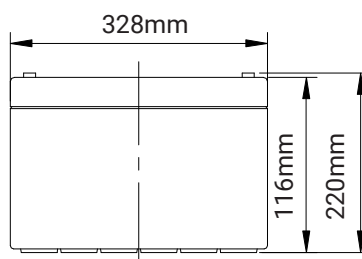
BATTERY FEATURES

- Positive and Negative plates in lead-calcium tin alloy.
- Deep Cycle
- 600 cycles at 70% DOD
- Design life 10 years
- Low self discharge
- 6 months shelf life @ 20°C
- Superior energy density
- 3 year manufacturer warranty

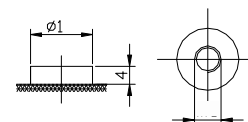
PERFORMANCE SPECIFICATIONS

| | |
|---|---|
| Nominal Voltage | 12 V |
| Rated Capacity | 114 AH @ C20 / 130 AH @ C100 |
| Cycle Life (@DOD70%) | 600 Cycles |
| Approximate Weight | 67.2 lbs (30.5 kg) |
| Internal Resistance | ≤ 5 mΩ |
| Max Charge Current | 25 A |
| Max Discharge Current | 900 A (5s) |
| Charging Voltage | 14.4-14.7 v cycle use / 13.6-13.8 v standby use |
| Series & Parallel Connection | 4 in series unlimited in parallel |
| Operating Temperature Range | |
| Charge | -10°C to 60°C |
| Discharge | -20°C to 60°C |
| Storage | -20°C to 60°C |
| Self-Discharge Rate | ≤3%/month@ 20°C |
| Long Term Storage | Charge every 6 months |
| Terminal Type | M8 |

DIMENSIONS:



Terminal (M8)





PREDATOR
BATTERIES LTD

PR12-130-AGM

12.8V
114 AH @C20
130 AH @C100

VRLA AGM deep cycle, sealed, lead acid battery.

