



PREDATOR
BATTERIES LTD



PR12-95-AGM

12.8V
85 AH @C20
95 AH @C100

VRLA AGM deep cycle, sealed, lead acid battery.

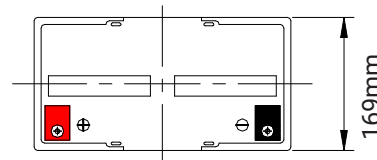
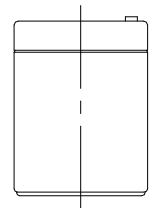
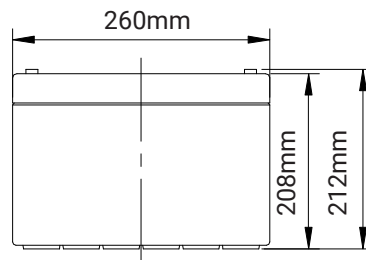
BATTERY CONSTRUCTION

Component	Positive plate	Negative plate	Container	Cover	Safety valve	Terminal	Separator	Electrolyte
Raw material	Lead dioxide	Lead	ABS	ABS	Rubber	Copper	Fiberglass	Sulfuric acid

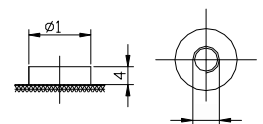
BATTERY FEATURES

- Positive and Negative plates in lead-calcium tin alloy.
- Deep Cycle
- 600 cycles at 70% DOD
- Design life 10 years
- Low self discharge
- 6 months shelf life @ 20°C
- Superior energy density
- 3 year manufacturer warranty

DIMENSIONS:



Terminal (F21)



PERFORMANCE SPECIFICATIONS

Nominal Voltage	12 V
Rated Capacity	85 AH @ C20 / 95 AH @ C100
Cycle Life (@DOD70%)	600 Cycles
Approximate Weight	50.7 lbs (23 kg)
Internal Resistance	≤ 5.5 mΩ
Max Charge Current	18.8 A
Max Discharge Current	750 A (5s)
Charging Voltage	14.4-14.7 v cycle use / 13.6-13.8 v standby use
Series & Parallel Connection	4 in series unlimited in parallel
Operating Temperature Range	
Charge	-10°C to 60°C
Discharge	-20°C to 60°C
Storage	-20°C to 60°C
Self-Discharge Rate	≤3%/month@ 20°C
Long Term Storage	Charge every 6 months
Terminal Type	M6



www.predatorbatteries.tech

Stuart James **07368 373549**
Mark Baker **07887 972678**



PREDATOR
BATTERIES LTD



PR12-95-AGM **12.8V**
85 AH @C20
95 AH @C100

VRLA AGM deep cycle, sealed, lead acid battery.

