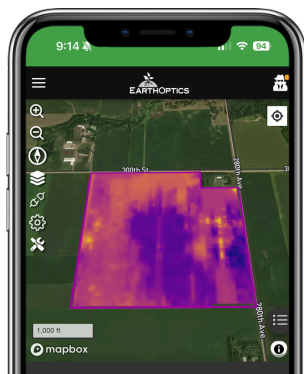




All your soil measurement information in one place

A complete physical, chemical, and biological analysis for your fields.

The 360 PRO



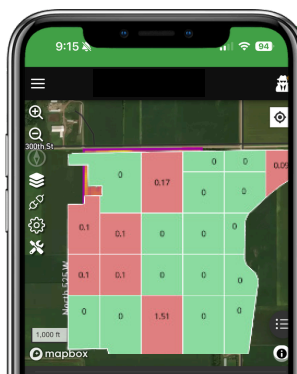
TruNutrient chemistry-based fertility

Macro: P, K, Ca, Mg
(add-on N)

Micro: B, Cu, Fe, Mn, S, Zn

Properties: pH, BpH, OM, CEC

10x10 meter grid = 100x the resolution of a 2.5-ac grid



TruBio biological

- Below-ground pests & diseases
- Foliar diseases
- Key biofertility measures

Crop plan based on opportunities and threats.

The 360 COMPLETE (+ TruTill)



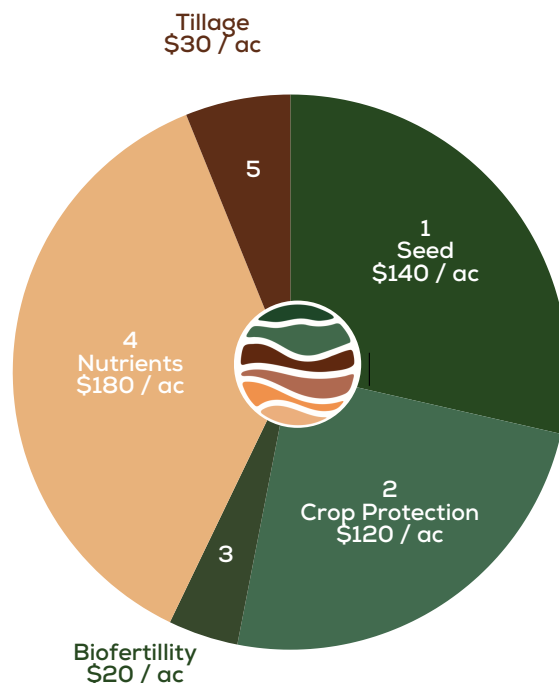
TruTill physical

- Compaction map: 10x10M
- 0-18" depth: Layer for each inch
- Built-in tillage prescription

TruTill is exclusive to EarthOptics

Plan your most important input spend

1. Seed: Match the seed to the field
2. Crop Protection: Protect the yield potential
3. Biofertility: Find the next 10-20 bushels
4. Nutrients: Super-charge sub-field fertility planning
5. Tillage: Address a field's physical limits



MSRP PRICING

TruNutrient	TruBio	TruTill
\$10.00 / ac	\$8.00 / ac	\$6.50 / ac
360 PRO: TruNutrient & TruBio		
\$16.00 / ac		
360 COMPLETE: TruNutrient, TruBio, TruTill		
\$21.00 / ac		