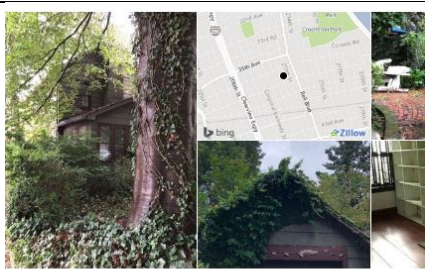


6 AT-RISK HOMES UPDATE OCT 2018



Parcel (BBL): **4-6171-43**
Owner(s): **INGBER MONTE**
Property Address: **36-33 212 STREET**



3633 212th St
Flushing, NY 11361
4 beds · 2 baths · 1,750 sqft
Detached Colonial With Fireplace, Nice Layout With Hardwood Floors, 4 Bedrooms And 1 1/2 Baths, Historic Copper Beech Tree In Front Of Home, House Needs TLC
FOR SALE \$988,000
Zestimate: \$999,040
EST. MORTGAGE \$4,058/mo
[Get pre-qualified](#)

Facts and Features

Type Single Family	Year Built 1925	Heating Radiant
Cooling No Data	Parking No Data	Lot 5,000 sqft
Days on Zillow 3 Days	Price/sqft \$565	Saves 8

INTERIOR FEATURES

Bedrooms Beds: 4	Attic Attic: Y
Bathrooms Baths: 1 full, 1 half	Appliances Appliances included: Refrigerator
Kitchen Eat in Kitchen: Y # Kitchens: 1	Dryer: O Washer: O
Other Rooms	Flooring Floor size: 1,750 sqft

UPDATE: Currently on the market!

Need to measure to see if beech tree is within 10 feet of curb



20904 38th Ave,
Flushing, NY 11361
3 beds · 2 baths · -- sqft
FOR SALE \$1,058,000
Zestimate: \$949,725
EST. MORTGAGE

UPDATE: Sold for \$980K in June 2018
New owner is MU CHENG ZHUO



3611 210th St,
Flushing, NY 11361
 -- beds · -- baths · 1,896 sqft

Ⓞ OFF MARKET
Zestimate®:
\$1,280,492
 Rent Zestimate®: \$2,500 /mo

3611 210th St, Flushing, NY is a single family home that contains 1,896 sq ft and was built in 1910. This home last sold for \$294,000 in January 2004.

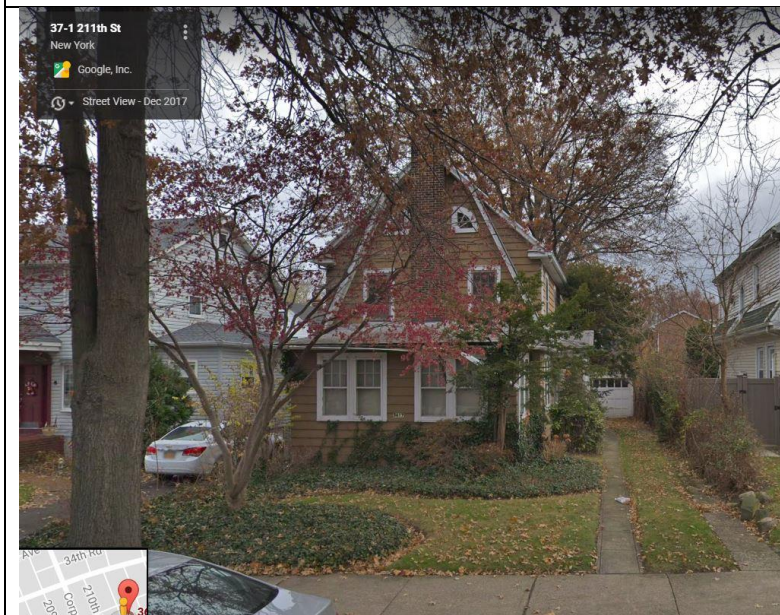
EST. REFI PAYMENT
\$5,857/mo
[See current rates](#)

The Zestimate for this house is \$1,280,492, which has increased by \$35,879 in the last 30 days. The Rent Zestimate for this home is \$2,500/mo, which has increased by \$50/mo in the last 30 days. The property tax in 2017 was \$2,727. The tax assessment in 2017 was \$36,297, an increase of 6.0% over the previous year.

Facts and Features

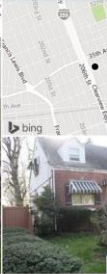




Type Single Family	Year Built 1910	Heating No Data
Cooling No Data	Parking Attached Garage	Lot 10,500 sqft

No update – not on market
 Owner is
MADELINE ALDINGER
 \$38K in tax arrears – last
 payment was in 2015
Borough: QUEENS
Block: 6166
Lot: 1



Parcel (BBL): 4-6170-54
Owner(s): AUGHAVIN FAMILY II LLC
Property Address: 36-11 211 STREET

NO UPDATE: not on the
 market (has transferred for
 \$0 within family since 1983)

	<div></div> <div><div><div>3538 208th St, Flushing, NY 11361</div><div>3 beds · 2 baths · --- sqft</div></div><div><div>FOR SALE</div><div>\$869,888</div><div>EST. MORTGAGE \$3,570/mo</div><div>Get pre-qualified</div></div></div> <div><div>This is a 3 bedroom, 2.0 bathroom, single family home. It is located at 3538 208th St Flushing, New York.</div><div><div>Linked by</div><div></div></div></div> <div><div>Facts and Features</div><div><div><div>Type</div><div>Single Family</div></div><div><div>Year Built</div><div>1950</div></div><div><div>Heating</div><div>No Data</div></div><div><div>Cooling</div><div>No Data</div></div><div><div>Parking</div><div>No Data</div></div><div><div>Lot</div><div>4,799 sqft</div></div><div><div>Days on Zillow</div><div>15 Days</div></div><div><div>Price/sqft</div><div>No Data</div></div><div><div>Saves</div><div>9</div></div></div></div>	No longer on the market
	<div></div> <div><div><div>3829 208th St, Flushing, NY 11361</div><div>4 beds · 4 baths · --- sqft</div></div><div><div>FOR SALE</div><div>\$1,590,000</div><div>Zeestimate™: \$1,416,346</div><div>EST. MORTGAGE \$6,525/mo</div><div>Get pre-qualified</div></div></div> <div><div>Prime Location, Walk To The Lirr , Mint Condition,Mother & Daughter House, Big Hi-Ranch, Wood Floor, Granite Kit & Bath., Good For The Big Family</div><div><div>Linked by</div><div></div></div></div> <div><div>Facts and Features</div><div><div><div>Type</div><div>Single Family</div></div><div><div>Year Built</div><div>1987</div></div><div><div>Heating</div><div>Other</div></div><div><div>Cooling</div><div>No Data</div></div><div><div>Parking</div><div>No Data</div></div><div><div>Lot</div><div>3,998 sqft</div></div><div><div>Days on Zillow</div><div></div></div><div><div>Price/sqft</div><div></div></div><div><div>Saves</div><div></div></div></div></div>	No longer on the market