



CONVENIENT,  
AFFORDABLE,  
E-DESIGN  
SERVICES

## WELCOME TO TOC E-DESIGN SOLUTIONS

Hi ! My name is Tania; I am a certified Interior Designer and builder with over 30 years experience. I am passionate about all that is design and I want to be able to share my wisdom and creativity with you by offering a scaled down service for the savvy DIY homeowner who are seeking professional design planning without a full-service budget.

THE LUXURY & CONVENIENCE OF AN EXPERIENCED INTERIOR DESIGNER AT YOUR FINGERTIPS

# HOW IT WORKS

## QUESTIONNAIRE

To start, we send you a client questionnaire to gather information about your project requirements, your interior design goals and what you envision for your space.

### STEP 1

## DESIGN

Next, we create E-design Plans, Renderings and color concepts, as well as furniture and finish selections that fit the functional and aesthetic needs of your space.

### STEP 3

## DESIGN PREP

Then, we have you take measurements and photographs of your space for us to utilize during the E-design. If needed, we may also gather additional information.

### STEP 2

## FINAL PLAN

Lastly, we organize all our design ideas, tools, and tips into a comprehensive E-design package that will serve as a do-it-yourself guide to implementing the design yourself!

### STEP 4

## MEDIA



LET US HELP YOU DESIGN A SPACE YOU'LL LOVE

# SELECT YOUR PREFERRED DESIGN PACKAGE

## 1 ROOM DESIGN

E-design for: 1 bedroom, 1 kids room, 1 family room, or 1 other room

### WHAT'S INCLUDED

- Initial 30 min. phone call
- Furniture E-design plan
- Wall Elevation(s)
- Inspirational 3-d perspective view
- Paint colors selection
- Material selection
- Product shopping list
- Direct messaging with your designer

**\$525**

## 2 ROOM DESIGN

E-design for : Living & Dining, 2 kid's bedrooms, or Master Bedroom & walk-in

### WHAT'S INCLUDED

- Initial 30 min. phone call
- Furniture E-design plan
- Wall Elevation(s)
- Inspirational 3-d perspective view
- Paint colors selection
- Material selection
- Product shopping list
- Direct messaging with your designer

**\$950**

## BATHROOM DESIGN

E- design for: Master Bathroom, Standard Bathroom, Powder room combo Laundry room

### WHAT'S INCLUDED

- Initial 30 min. phone call
- Bathroom demo plan
- Bathroom plan with dimensions
- Lighting Plan
- Wall Elevation(s)
- Inspirational 3-d perspective view
- Paint colors selection
- Material selection
- Product shopping list
- Direct messaging with your designer

**\$900**

## KITCHEN DESIGN

You guessed it !  
This is all about your Kitchen

### WHAT'S INCLUDED

- Initial 30 min. phone call
- Kitchen demo plan
- Kitchen plan with dimensions
- Lighting Plan
- Wall Elevation(s)
- Inspirational 3-d perspective view
- Paint colors selection
- Material selection
- Product shopping list
- Direct messaging with your designer

**\$1600**



# Curious about what the design package looks like? We've included several examples for each different type of package



Benefit by adding real value to your home by investing in the advice of a professional designer for your home improvement projects. An Interior Designer can help you maximize every square inch of your space, turn awkward and challenging obstacles into features, realize hidden potential and help you achieve high quality results.

The key elements to a successful, professional quality re-design no matter how big or small, is creating a great Design Plan. It's essential for assessing your budget requirements and your scope of work; it streamlines the sourcing process and is your most important communication tool for implementing your design. Whether you need to get quotes from contractors, approvals from condo boards or apply for a home improvement loan, with a comprehensive design plan your project will be well received and evoke a sense of confidence in all those who you'll need to bring on board.



We invite you to check out our site for more information, or simply reach out to us by email or call



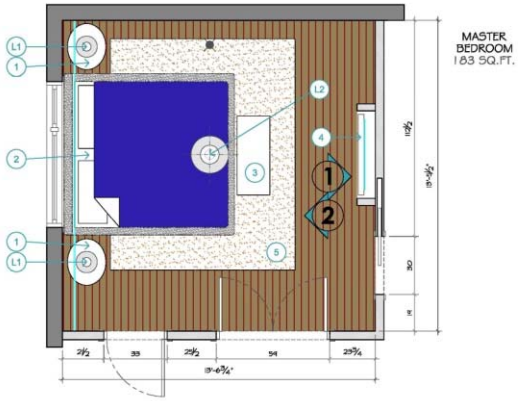
Tania Scardellato

• +1 (514) 983-68006

• tania@tocdesign.com

• www.tocdesign.com

# EXAMPLES OF WHAT YOU GET



Bellevue Master bedroom furniture layout plan



Bellevue Master bedroom elevations



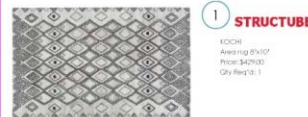
Bellevue Master bedroom 3-d rendering



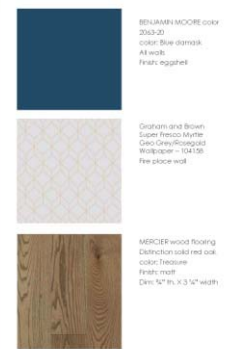
Bellevue Master bedroom 3-d rendering



Bellevue Master bedroom furnishings



Bellevue Master bedroom finishes



1 ROOM DESIGN \$525

E-design for: 1 bedroom, 1 kids room, 1 family room, or 1 other room



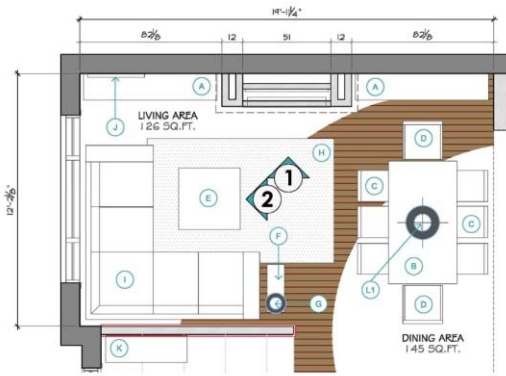
Tania Scardellato

+1(514) 983-68006

tania@tocdesign.com

www.tocdesign.com

# EXAMPLES OF WHAT YOU GET



Tina & Tony Living & Dining room furniture layout plan



- 1 ELEVATION  
Living & Dining Area
- 2 ELEVATION  
Living & Dining Area

Tina & Tony Living & Dining room elevations



Tina & Tony Living & Dining room 3-d rendering



Tina & Tony Living & Dining room 3-d rendering



- A wayfair**  
Rowley Butler Table side board  
SKU: C00101316  
Color: white with black accent  
Price: \$499.99  
Qty Req'd: 2
- B STRUCTURE**  
AUGO  
Glass extendable dining table  
Dim: 150cm x 240cm  
Color: Chrome glass & black  
Price: \$499.00  
Qty Req'd: 1
- C STRUCTURE**  
BOSSON  
contemporary Dining Chair  
Color: black & vinyl & chrome high  
Price: \$79.00  
Qty Req'd: 4

Tina & Tony Living & Dining room furnishings



- E STRUCTURE**  
LEONARDO  
Mable coffee table  
Dim: 90cm  
Color: white marble & chrome legs  
Price: \$299.00  
Qty Req'd: 1
- F STRUCTURE**  
LEONARDO  
Mable end table  
Dim: 70cm  
Color: white marble & chrome legs  
Price: \$199.00  
Qty Req'd: 1
- G STRUCTURE**  
ISA  
table lamp  
Dim: 54cm high  
Color: black  
Price: \$29.00  
Qty Req'd: 1
- H STRUCTURE**  
AURA  
Area rug (flat on floor) with wood and  
95cm  
Dim: 185 cm x 274 cm  
Price: \$489  
Qty Req'd: 1



- I STRUCTURE**  
BINA  
left facing sectional sofa with  
adjustable footrest  
Color: grey & chrome legs  
Dim: 170cm x 356cm  
Price: \$1999.00  
Qty Req'd: 1
- J STRUCTURE**  
SERENA  
round extendable coffee  
Dim: 80cm x 122cm  
Price: \$179.00  
Qty Req'd: 1
- K STRUCTURE**  
RJO  
bench  
color: grey & black legs  
Dim: 40cm x 122cm  
Price: \$69.00  
Qty Req'd: 1
- L1 Dainolite**  
HELPER  
Dimplex pendant  
SKU: 1411P-08  
color: black interior gold  
Dim: 10" Dia.  
Price: \$330.00  
Qty Req'd: 1

Tina & Tony Living & Dining room furnishings & finishes



- I COORDO**  
4307-01  
color: grey stone  
General wall  
Finish: eggshell
- J COORDO**  
4307-01  
color: charcoal  
accent wall  
General wall of fireplace wall  
Finish: eggshell
- K COORDO**  
Laminex stone  
color: white white  
Dim: custom  
Finish: gloss wall
- L1 MERCEDES**  
wood flooring  
Distinction solid oak oak  
color: Teak  
Finish: matt  
Dim: 12" x 12" x 3/4" with



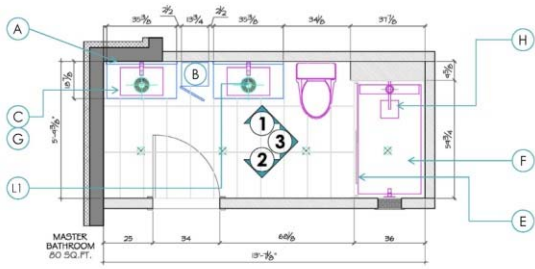
2 ROOM DESIGN \$950

E-design for : Living & Dining, 2 kid's bedrooms, or Master Bedroom & walk-in

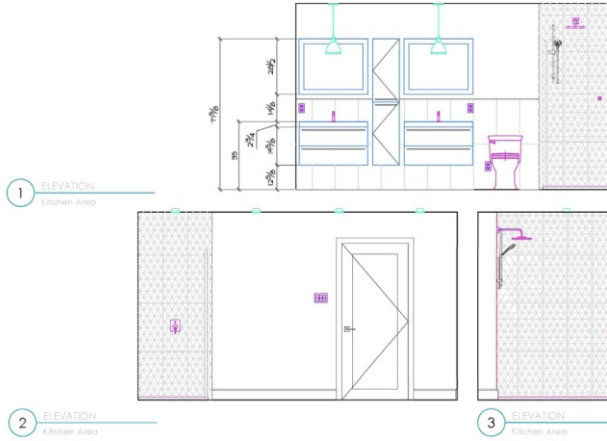




# EXAMPLES OF WHAT YOU GET



Elspeth & Mike BATHROOM layout plan



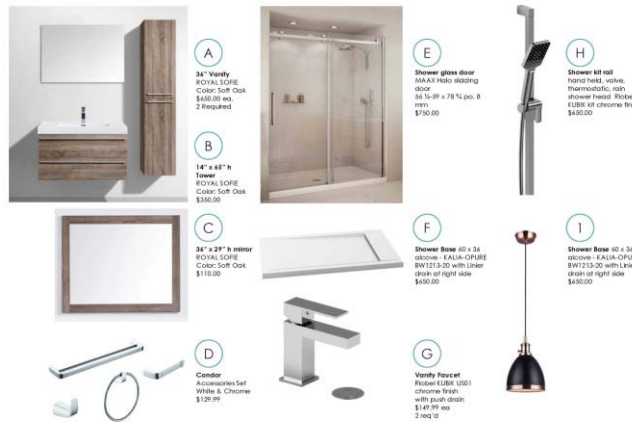
Elspeth & Mike BATHROOM elevations



Elspeth & Mike BATHROOM 3-d rendering



Elspeth & Mike BATHROOM 3-d rendering



Elspeth & Mike BATHROOM furnishings & fixtures



Elspeth & Mike BATHROOM finishes



**BATHROOM DESIGN \$950**

E- design for: Master Bathroom, Standard Bathroom, Powder room combo Laundry room



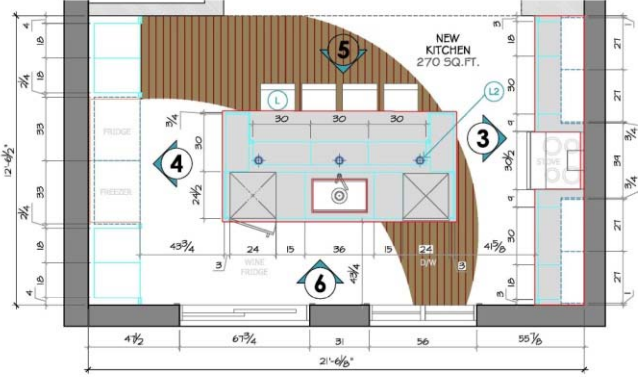
Tania Scardellato

• +1(514) 983-68006

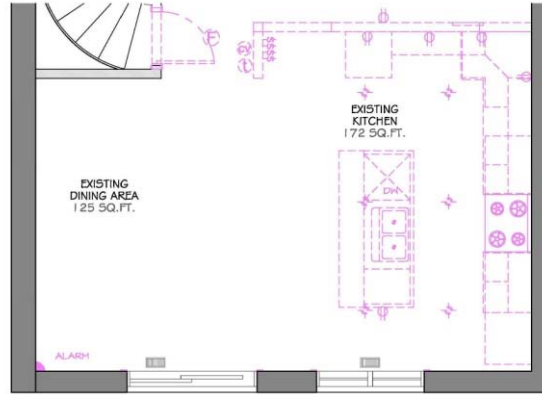
• tania@tocdesign.com

• www.tocdesign.com

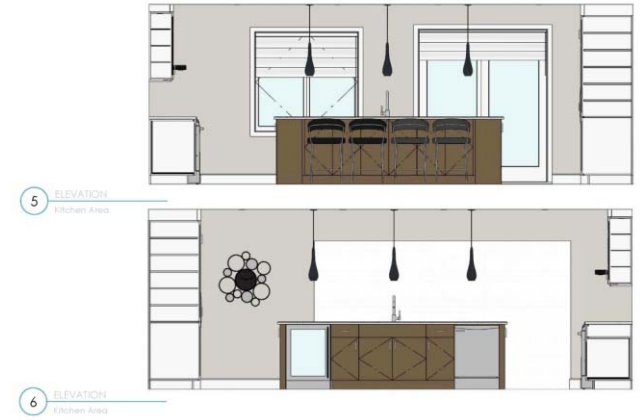
# EXAMPLES OF WHAT YOU GET



Tina & Tony KITCHEN cabinet plan



Tina & Tony KITCHEN demo plan



Tina & Tony KITCHEN elevations



Tina & Tony KITCHEN 3-d rendering



Tina & Tony KITCHEN 3-d rendering



Tina & Tony KITCHEN furnishings & finishes



KITCHEN DESIGN \$1600

E - design for: your Kitchen



Tania Scardellato

+1(514) 983-68006

tania@tocdesign.com

www.tocdesign.com



# EXAMPLES OF HAPPY CLIENTS FINAL RESULTS



1 room E-design option



1 room E-design option



1 room E-design option



1 room E-design option



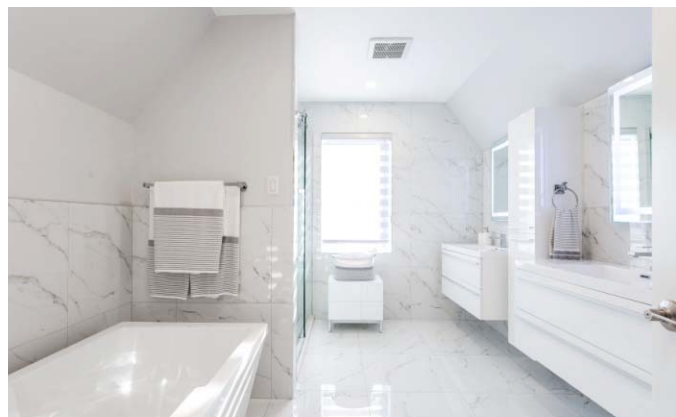
1 room E-design option



2 room E-design option



bathroom E-design option



bathroom E-design option



kitchen E-design option