

NEWSFLASH

Michigan PTA's Newsletter For Leaders

May/June 2021

WHAT'S INSIDE

- **Jan Harp Domene Award**
- **Those Two Dues That You Do**
- **Fed Leg Update**
- **PRIDE Month**
- **Juneteenth**
- **Where Do I Find...**
- **State Awards**
- **A Note From the President**
- **Big News From MemberHub**
- **Save the Date**
- **Important Dates**

HOW DO YOUR OFFICERS KNOW THAT ALL THEIR WORK IS DONE FOR THE YEAR?

Treasurers:

1. Are all your memberships paid - each month this is due by the 28th? Check MemberHub under State Payments to see if any are outstanding for this year (or last year).
2. Have Unit dues of \$40 been paid to MiPTA by June 30th?
3. Did you approve a budget for the 2021-22 school year? Upload it now.
4. Make plans now as to when you are holding your audit (after June 30th) Invite your new treasure if you have voted one in, it's a great help with transition.

Secretaries:

1. Do you have all meeting minutes recorded and saved? These are retained permanently. see PTA Retention Schedule for list of all documents
2. Minutes from your last meeting of this year easy to find to approve at your first meeting of next year?
3. Access to your bylaws to share with new board members?
4. Are all newly elected and returning officers entered in MemberHub as officers for the 2021-22 school year?

Vice Presidents and Presidents:

1. Are there plans for transitions in place? Give your new board time to plan, don't wait to hand over materials. see example of a Procedure Book
2. Did you recap the year with your teachers and principal? Great time for feedback and tentative plans for next year on things they enjoyed.

Are you doing an end of year Newsletter or email to your school community or members? We'd love for you to share it with us.

Congratulations!

NATIONAL PTA JAN HARP DOMENE DIVERSITY AND INCLUSION AWARD WINNER – MICHIGAN PTA

The Michigan PTA Diversity, Equity, Inclusion, and Outreach Committee and Michigan PTA are excited to share and elated to be selected as the **National PTA Jan Harp Domene Diversity and Inclusion Awardee for State PTAs**. Our partnership with the Student Involvement Committee was a significant factor for this recognition. It isn't easy to have a PTA DEI committee without our youth. The driving force for our work continues to be the spirit of Past Michigan PTA President, **Sibyl Collins Wilson**. We also give appreciation and gratitude to the **Long Beach (California) PTA** and **Dr. Nooshin Valizadeh (Long Beach PTA)**, Trauma-Informed EDI Strategist, Educator, and Activist with whom we collaborated to develop our **Michigan PTA Diversity, Equity, Inclusion, and Outreach Guide and Practice for State, Council, and Units**.

We congratulate the Council awardee- **Chappaqua District PTA (New York)** and Unit awardee **Edgemont Montessori PTA (Montclair, New Jersey)**. The following excerpt below is the media release from National PTA:

This past year, Michigan PTA made a conscious effort to advance their diversity, equity and inclusion work by revising their policies, providing resources and trainings, and constantly being responsive to the needs of their communities. Michigan PTA's Diversity, Equity, Inclusion and Outreach Committee partnered with their Student Involvement Committee to produce a virtual town hall on "The Effect of Racial Trauma on Youth and Families in the African American Community," as well as a second virtual town hall on "Uncomfortable, Necessary Conversations About Racial Trauma in Middle and High School Curriculums." Additionally, the Diversity, Equity, Inclusion and Outreach Committee produced a webinar on "Equity in Special Education: Neurodiverse Populations." Each event featured a diverse panel including teachers, administrators, parents, students and PTA leaders of different ethnicities and backgrounds. Michigan PTA has been intentional in amplifying anti-racist and social justice practices and policies in their PTA. They have also developed and maintained relationships with partners including the American Foundation for Suicide Prevention—Michigan, Affirmations LGBTQ Community Center, Michigan Organization for Adolescent Sexual Health, NAACP, and ACLU, as well as with elected and appointed local and federal officials, to provide their membership with resources for the betterment of students and families.

The full media release is available through the following link
Please note: For CLICKABLE links please download this newsletter as a pdf :
pta.org/home/About-National-Parent-Teacher-Association/PTA-Newsroom/news-list/news-detail-page/2021/04/28/national-pta-honors-achievement-in-diversity-and-inclusion



Those Two Dues That You Do

As Spring approaches, our thoughts turn to....Unit Renewal Dues! (Were you expecting something else?) These annual dues are \$40, and are due to Michigan PTA by June 1. Paying Unit Renewal Dues registers your PTA as a constituent unit in Michigan PTA for the next school year, and helps us determine how many units we will be servicing, and where they are located. In the past, units submitted their annual Unit Renewal Dues with a form, which also listed the newly-elected officers. Now, officers are entered online using MemberHub, and that form is no longer needed.

There are two ways to pay Unit Renewal Dues. You can either go to the Michigan PTA store in MemberHub (<https://mipta.memberhub.store>) and pay them using a credit/debit card, or you can mail a check for \$40, payable to Michigan PTA, to:

Michigan PTA
PO Box 510535
Livonia, MI 48151

Unit Renewal Dues are not the same as Individual Membership Dues, which comprise the local, state, and national portion of the dues a person pays to become a PTA member. When someone joins your PTA, they pay dues, as outlined in your bylaws. Those dues grant them a three-level membership for the current year at the local (school) level, the state level, and the national level. From the dues they pay, you send the state portion (\$3.25) AND the national portion (\$2.25) to Michigan PTA, who then forwards the national portion on your behalf. (Note: for each member, you send in \$5.50. Any dues amount paid in excess of that goes directly to your unit. So it makes sense to have your dues amount set at more than \$5.50, if at all possible.)

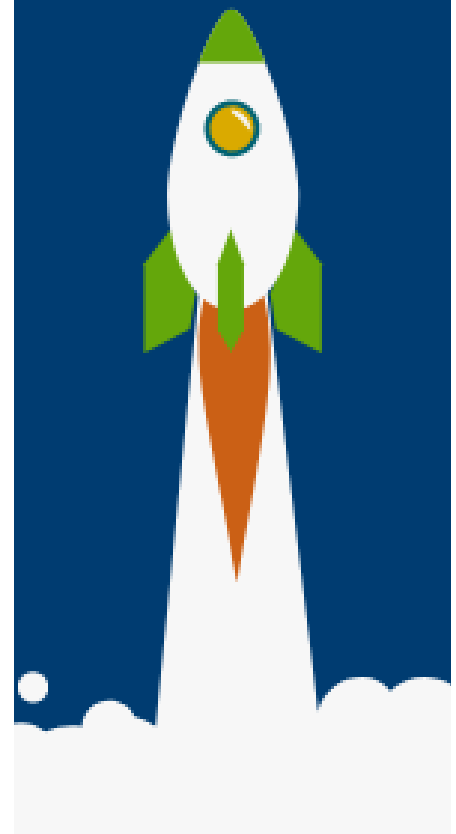
Individual Membership Dues are paid to Michigan PTA each month by the 28th of the month. The amount is based on how many people joined your PTA that month. There are two ways to pay Individual Membership Dues: Write a check and mail it, as listed above; or, you can pay it through MemberHub, as an electronic fund transfer / echeck. To use this option, your PTA must have a bank account, and must have a merchant agreement set up within MemberHub. (If you have not set up your Merchant Agreement, it is easy to do. Have your bank account information handy. Login to MemberHub. Access the Admin Console. From the menu list in the center of the page, choose Store Admin. The Merchant Processing Agreement will be in the list on the right. There is a Help Menu available by clicking on the big ? button in the corner.)

Whether you want to mail a check, or pay electronically, the first steps are the same: Login to MemberHub, and access the Admin Console. From the list on the right, choose State Payments. There will be a message box to tell you how much to pay—MemberHub does the math for you! There will be a box to choose Pay by eCheck or Send a check. Choose one, and answer the prompts. If you are sending in a check, please remember to mail it, to the address above.

Please pay Unit Renewal Dues by June 1. Please pay all outstanding Individual Membership Dues by June 28. If you have any questions, please call Michigan PTA at 734-975-9500.

We've
Launched
Our
New
Website!

michiganpta.org



FED LEG CHAIR MAY UPDATE

I am so excited to share that the Michigan PTA has met with EVERY Federal Michigan Member of Congress to share National PTA's asks. This was a journey that started during our Legislative Conference at the beginning of March, which was historic in and of itself because we had 25 advocates from across the state attend! Yet, even as that concluded we scheduled on and 7 weeks later completed the goal. We sincerely appreciate that the office of each of the 14 Federal Representatives and both Senators were willing to meet with us and hear the message of the PTA. From rural to urban, the tip of Upper Peninsula to the Canadian border - the Michigan PTA Advocates for all its children.

From Federal to Local, all advocacy is important which is why the National PTA is sharing valuable flyers on the American Rescue Plan Act (ARPA) and how your PTA can be involved. According to National PTA, part of this Act requires that school districts get parent input on how to spend incoming federal dollars. They have created two flyers with information on ARPA itself and how to get your community involved. They also are recording a webinar on May 13th that can be viewed at a later date. If you want more information on this please do not hesitate to reach out to me.

Lastly, Eric Walcott from Michigan State University kindly shared his expertise with Mike Testa, Livonia PTA Council Advocacy Chair and Member of the MI PTA Advocacy Committee, and myself, for a Q&A regarding school Boards.

Eric Walcott is a State Specialist with MSU Extension's Government and Public Policy programs. Eric's work focuses primarily on good governance, civic engagement, and fiscal sustainability, seeking to build capacity of state and local government officials, help communities develop strategic plans, as well as educate Michigan residents on issues related to state and local government and encourage their informed participation. Eric previously worked in the Michigan House of Representatives and holds a Master of Public Policy degree from Michigan State University.

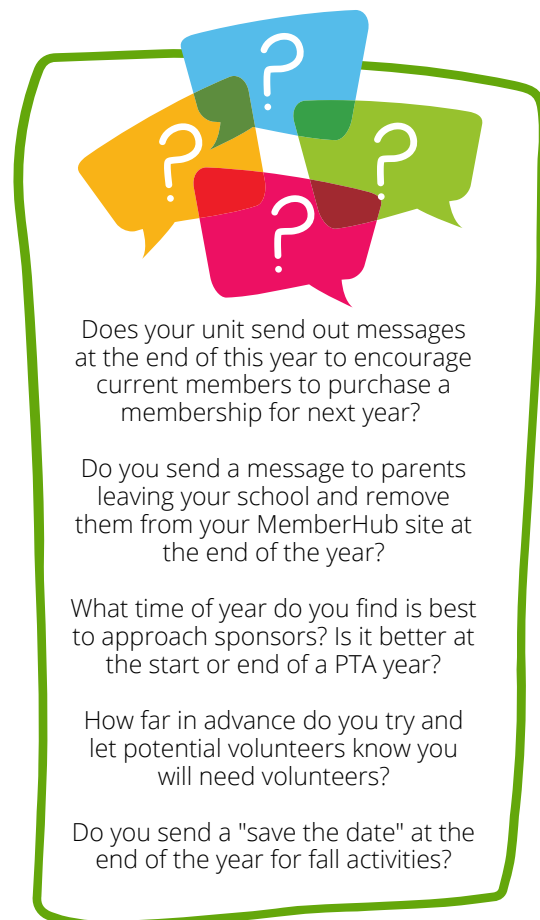
-continued

We know that there has been an understandably heightened interest in School Board meetings over the past year as these meetings went virtual. Now that many are going back in person we wanted to share information on public meetings. We cover a broad range of topics: What is the Open Meetings Act? Why do School Board meetings look so different from one community to the next? How and what can communities advocate for regarding how meetings are run? And much more. You can find the entire 16 minute Q&A or shortened clips at michiganpta.org/advocacy.

If you have any questions, need more information, or just want to discuss, never hesitate to reach out to me at fedlegchair@michiganpta.org.

From my family to yours - Cheers to the end of the school year! We made it! I hope you get a chance to unwind and recharge this summer. I am excited about #GrowingForward with you during the 2021/22 School Year!

Carin Meyer
Michigan PTA Federal Legislative Chair



PRIDE Month!



Each year in June, **LGBTQ PRIDE** takes place in the United States. June was chosen as a commemoration of the Stonewall riots. The New York City Public Morals Unit was a significant factor in the event. The purpose of the unit was to enforce laws against gambling, prostitution, homosexuality, and drugs. Although the unit routinely operated throughout the city and citizens, residents, and business owners were accustomed to learning of the raids, on the morning of June 28, 1969, the patrons of one business, the Stonewall Inn, fought back. The following year, anniversaries of the riot took place throughout the United States and continued. President Bill Clinton was the first United States President to declare the month of June as *Gay & Lesbian Pride Month*. Each president after that also acknowledged PRIDE.

The **Michigan Diversity, Equity, Inclusion, and Outreach Committee** is ecstatic to acknowledge and celebrate PRIDE across the land! In addition, we are pleased to endorse and share the festivities of coalition partner **Affirmations LGBTQ Community Center**, located in Ferndale, Michigan. Access their website to learn of fun activities for all ages by [clicking on the link here.](#) Additional resources to support and affirm the LGBTQ community are also available on [Youth.gov](#) website.

Michigan PTA does not support discrimination of any kind. We fully support and openly embrace our LGBTQ community. The **Resolution: to support the inclusion, protection, and affirmation of LGBTQ students and families in Michigan** was ratified at our 101st Michigan PTA Convention held in 2019. Michigan PTA does not support discrimination of any kind. We fully support and openly embrace our LGBTQ community. The Resolution: to support the inclusion, protection, and affirmation of LGBTQ students and families in Michigan was ratified at our 101st Michigan PTA Convention held in 2019.

Juneteenth

This is not a made-up holiday

The American Civil War ended in 1863 upon the issuance of the Emancipation Proclamation by United States President Abraham Lincoln. The first celebration took place in Galveston, Texas, on June 19, 1865. This date signifies the acknowledgment that enslaved persons of African descent and their offspring in the United States were officially free from the bondage of their slave owners. The two-year delay was how long it took for word of the abolishment of slavery to reach the more than 3 million slaves residing in the Confederate states. Upon learning of their freedom, the formerly enslaved citizens celebrated by dancing and singing, and thus, Juneteenth became a festive holiday of freedom.

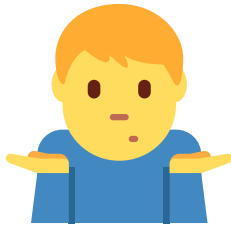
Michigan PTA Diversity, Equity, Inclusion, and Outreach and Michigan PTA embrace the celebration of Juneteenth! The following listing is celebrations taking place throughout our great state:

- [Detroit Black Wall Street JUNETEENTH CELEBRATION, Location: OAK PARK, MICHIGAN](#)
- [Juneteenth Festival \(517\) : Location: LANSING, MICHIGAN](#)
- [Juneteenth Flag Ceremony: Location: BRIDGMAN, MICHIGAN](#)
- [EECS Juneteenth Celebration: Location: REMOTE- Ann Arbor](#)
- [The Charles H. Wright Museum of African American History, Location: DETROIT, MICHIGAN](#)



Please note:

For CLICKABLE links please download this newsletter as a pdf



Where Do Find...



Where do I find ...

Go here ...

Still have questions? Contact:

Appreciation Awards, DSAs	MemberHub MIPTA Store Or mail in this form	Secretary@michiganpta.org
Audit/financial review	https://michiganpta.org/pta-leader-resources	Treasurer@michiganpta.org
Bylaws	https://michiganpta.org/pta-leader-resources	Secretary@michiganpta.org
Elections	Sample Election script Refer to your Bylaws	Outreach&Support@michiganpta.org
Form 990 with IRS	https://apps.irs.gov/app/eos/allSearch Enter your EIN, click on your Legal Name, brings up the history of 990 forms. Look for end date of last fiscal year	Secretary@michiganpta.org
Good standing	MemberHub Compliance*Submissions	Secretary@michiganpta.org
Membership dues, pay	MemberHub Dashboard*Memberships*Remit State Dues	MembershipVP@michiganpta.org
MIPTA awards	https://michiganpta.org/state-pta-awards Awards information	Awards@michiganpta.org
Reflections Program	MIPTA Reflections page National PTA info	Reflections@michiganpta.org

Please note: For CLICKABLE links please download this newsletter as a pdf.

pta.org/home/events/National-PTA-Convention-Expo

**National
PTA**
everychild.onevoice®

**PTA 2021
CON LIVE**

JUNE 24-27 VIRTUAL

Awards for units and councils. Apply by June 1!



A spotlight on Michigan PTA's **Healthy Lifestyles Award**



This award recognizes PTAs/PTSAs that have implemented programs to improve the home/school health climate



Social Mental Physical Spiritual Emotional

Has your unit worked on any health related initiatives this year? You may qualify to apply for the Healthy Lifestyles Award!

For details visit michiganpta.org/state-pta-awards

Apply Now!



A spotlight on Michigan PTA's **Best Male Involvement Program Award**



This award recognizes PTAs/PTSAs that have implemented programs to bring more male involvement into their schools.



Father Figures Relatives Community Members Teen Mentors

For details visit michiganpta.org/state-pta-awards

Apply Now!



A spotlight on Michigan PTA's **Outstanding Administrator of the Year Award**



This award recognizes school or district administrators that foster strong relationships with the school community (parents, students, staff), demonstrate advocacy efforts on behalf of public education, and maintain a strong affiliation with the local PTA.

Champions for children come in many forms:

- Diversity, Equity and Inclusion Support
- Principals/Vice Principals
- Career Tech Coordinators
- Superintendents
- Technology Support
- Communications
- Special Education
- and more



Does your unit or council have a champion involved in bettering the lives of children? Tell us about it!

For details visit michiganpta.org/state-pta-awards

Apply Now!



A spotlight on Michigan PTA's **Excellence in Communications**



This award recognizes PTAs/PTSAs that excel at communicating with their community.

Is your unit a communications rockstar?

Tell us about it!



For details visit michiganpta.org/state-pta-awards

Apply Now!



A spotlight on Michigan PTA's **Best Membership Campaign Award**



This award recognizes PTAs/PTSAs that have had an especially successful membership campaign this year.

Did your unit:

- Increase the number of members?
- or use a unique approach?
- or involve staff?
- or connect with in-person and virtual parents?



Let us know the amazing membership campaign ideas and results!

For details visit michiganpta.org/state-pta-awards

Apply Now!



A spotlight on Michigan PTA's **PTA/PTSA Member of the Year Award**



This award recognizes exemplary PTA-related and community participation by an individual member in a Council or Unit

Does your unit or council have a real superstar on your team?

Someone who does remarkable things in PTA and their community?

Tell us about it!



For details visit michiganpta.org/state-pta-awards

Apply Now!



A spotlight on Michigan PTA's **Council of the Year Award**



Has your council:

- Held a leadership training session for local units
- Held a council project or critical issues program in which all local units participated
- Had delegates attend the last MIPTA Convention
- Had active representation at local Board of Education meetings and established a close working relationship



For details visit michiganpta.org/state-pta-awards

Apply Now!



A spotlight on Michigan PTA's **Sharon Berry Spirit of PTA Award**



This award recognizes an outstanding volunteer who has given consistent and outstanding service through PTA.

This person is a member of the PTA, reflects a positive influence, is an inspiration to others, and exemplifies the PTA Purposes, Mission, and Core Values.



For details visit michiganpta.org/state-pta-awards

Apply Now!



A spotlight on Michigan PTA's **Brian Whiston Advocate of the Year Award**



The Brian Whiston Advocate of the Year award will be presented to an individual PTA member, who through their leadership and advocacy efforts, affected federal, state, or local policy priorities within Michigan PTA's annual public policy agenda.



For details visit michiganpta.org/state-pta-awards

Apply Now!



A spotlight on Michigan PTA's **Outstanding Educator/Staff Member of the Year Award**



This award recognizes exemplary PTA-related and community participation by an Educator or Staff member during the school year.

Champions for children come in many forms:

- Educators
- Office Staff
- Counselors
- Cafeteria Workers
- School Nurses
- Maintenance Workers
- Noon Aides
- and more



Does your unit or council have a champion involved in bettering the lives of children? Tell us about it!

For details visit michiganpta.org/state-pta-awards

Apply Now!

A Note From the Michigan PTA President

Hello Michigan PTA members! I hope you had a great Mother's Day. It matters not if you are a biological mom, foster, adoptive/step mom or even a fur baby mom, I hope it was good. I should also mention single Dads and "Mom" to all kids in your community and across the State. Thank you all and keep celebrating.

As we wind down this year of ups and downs, let's concentrate on the good things that have happened!! The Biggest is we survived our PTA mission. Now for the next step in our journey. We must help next year's PTA Board be successful. The call from us, is for you to call us with questions, concerns and procedures. As we close out this school year the needs are:

1. Have elections
2. Submit the officers into memberhub
3. Prepare for the annual audit
4. Make sure the 990 information is up to date. Filing for 2020-21.
5. Pay your Unit dues

Some of the information can be found in this newsletter, our Facebook page and website. That information is also in this newsletter. We are a phone call or email away to help you through the process. Please keep advocating for your children, to make their potential a reality!!

Sincerely Kathy Carter

Big News About MemberHub!

As you may have heard, MemberHub will soon be releasing a huge upgrade to the system with an improved user experience, new features, and simplified user interface. Michigan was chosen for state-wide BETA testing and to receive feedback to improve the rollout to all MemberHub states.

So what does this mean?

- When you log in, you'll see the newest version of MemberHub.
- All your existing data has been migrated over with a few exceptions you can read about at <https://support.memberhub.com/hc/en-us/articles/1500010264562-Data-Consistency-from-Legacy-MemberHub-to-MemberHub-21>
- There will be a link to the legacy application to access the "old" system

We Need Your Feedback

The key to this BETA is collecting feedback from PTA leaders like you. So please log in, "kick the tires" and then jot down your observations. Use this link to leave your feedback:

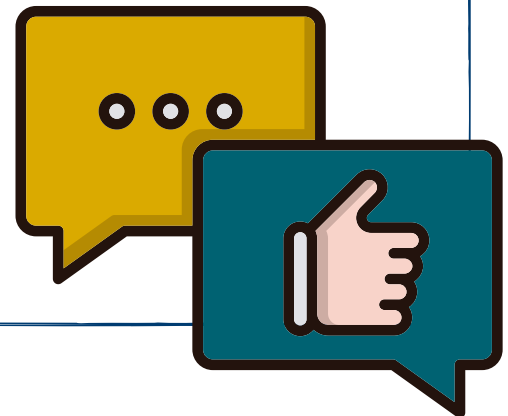
https://docs.google.com/forms/d/e/1FAIpQLSfSn-BtgXgWVj8TpZuj_j8m-z8IAx9dwH0Qmh3sW3HigvdfJQ/viewform?usp=sf_link

What About Help

Inside the application there will be notes and messages to help you navigate and point out what's changed. Please take the time to read those messages.

Also here is the link to an article that lays out all the changes:

<https://support.memberhub.com/hc/en-us/articles/1500010417381>



What's New in MemberHub 21?

Helpful updates from MemberHub



We are so excited for you to check out the new version of MemberHub! Find out about all of the awesome changes below. For information about how your data was moved from the legacy system to the new system, [click here](#).

Your Profile

You now only have one MemberHub profile regardless of how many Organizations you are a part of. So, if you update your address or your visibility settings, it will update in all organizations, not just the one you are currently viewing.

Admin Console

- The admin console is no longer a menu item. Functionality from the admin console can be accessed from other modules in the new interface.
- The new *Compliance module* contains Officers, Unit Data, Submissions, and Documents.
- The *Membership module* contains Membership Management and Dues Remittance.
- People have been renamed to *Contacts* and it is now its own module containing Site Joins.
- Hubs now live in the *Communications module*.
- Lastly, *Organization Settings* is its own menu item.

Hubs

In an effort to be less restrictive and allow for more efficient communication, hubs have changed. Hub home pages do not exist in the new system. Your organization's website is a great place to feature information that used to live on hub home pages. Or, share info via files and photos.

Files and photos

We now allow you to organize files and photos via a folder structure you can customize. There's no longer a need for file tags.

Messages

Messages sent through the Newsletter feature released earlier this year will continue to be available in the new system.

The new Messages feature allows organization administrators and other users with permissions to send one-way messages to people within the organization. These messages can be simple with only text, or beautiful templated messages with links, images and other formatting options. While they can be sent to a hub, you do not have to first select a hub to send a message.

Events

We've made improvements to events! They can now be shared publicly. We also have RSVP functionality with the ability to capture the number of attendees in a group. This listing is exportable for easy tracking at events.

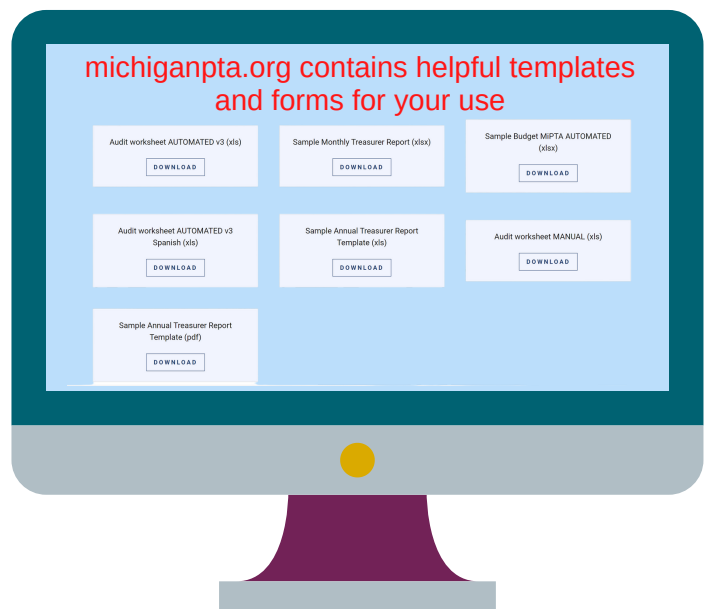
Contacts

"People" are now called Contacts and this module has more functionality than before.

Roles. Each person in your organization has a role within the organization and if they are part of hubs, a role within the hub. Non-admin people are generally called "contacts." However, people who purchase from your online store or make donations in fundraisers will have the role of customer or donor. Your contacts listing literally builds itself as people interact with your store and fundraisers!

Properties. Custom fields are now called properties and are more dynamic. Organization administrators can create and manage these properties which can be set to viewable by everyone, or just the admins. Filter by these properties and save the custom filter to quickly message people in your org.

We are continuing to improve the new MemberHub during the summer, so look for even more functionality before the fall!





THIS IS Mi --- PTA

Save the Date!

103rd Annual Convention
Saturday, August 5-8, 2021

Important Dates to Remember

Unit and Council Renewal and Officer Updates Begins June 1, 2020
in MemberHub (for 2020/21 this deadline is extended to Oct.1st)

Submit Board of Directors
Speaking/Visit Requests for Fall 2020 September 15
and Founders' Day Schedule

990 filing date with IRS (for most Units/Councils) November 15

Standards of Affiliation (SOA)* deadline
(Dues, Audit, Budget, Copy of 990, Officers, Bylaw, Insurance) December 1

Submitting Board of Directors January 15
Speaking/Visit Requests for Spring/Summer 2021

Submitting Resolutions for
consideration at Convention March 1

Fran Anderson Scholarship
Deadline April 1

Michigan PTA Awards Deadline April 15

Satisfying Standard of Affiliation allows Units/Councils to participate in all State and National Awards, Grants and Programs.

Please note that when a Unit/Council applies for a National PTA award/grant/program, Michigan PTA is contacted before the award/grant/program is dispersed and if the Unit/Council has not satisfied the Standards of Affiliation (SOA), that entity will be disqualified for the award/grant/program, per Michigan PTA's affiliation agreement with National PTA.

Mailing Address
Michigan PTA
P.O. Box 510535
Livonia, Michigan 48151

734.975.9500
michiganpta.org



Connect With Michigan PTA!

Website: michiganpta.org

Facebook Page: facebook.com/everychildonevoice/

Facebook groups by interest:

- Michigan PTA Advocacy
- Michigan PTA Reflections Network
- Michigan PTA Diversity, Equity and Inclusion
- Michigan PTA Membership/Memberhub
- Michigan PTA Leadership Community

We're Here to Help

Although Michigan PTA does not have a physical office and no staff at the moment, volunteers are still available to help answer questions. How you can reach us:

734-975-9500

P.O. Box 510535
Livonia, MI 48151

President- Kathy Carter
president@michiganpta.org

Secretary- Liz Jarvis
secretary@michiganpta.org

Treasurer- Dianna Sharpe
treasurer@michiganpta.org

VP of Outreach & Support- Tracey Troy
outreachsupportvp@michiganpta.org

VP of Student Involvement- Jennifer Johnson
studentinvolvementvp@michiganpta.org

VP of Membership- Brian Johnson
membershipvp@michiganpta.org

VP of Advocacy- Marcy Dwyer
childadvocacyvp@michiganpta.org