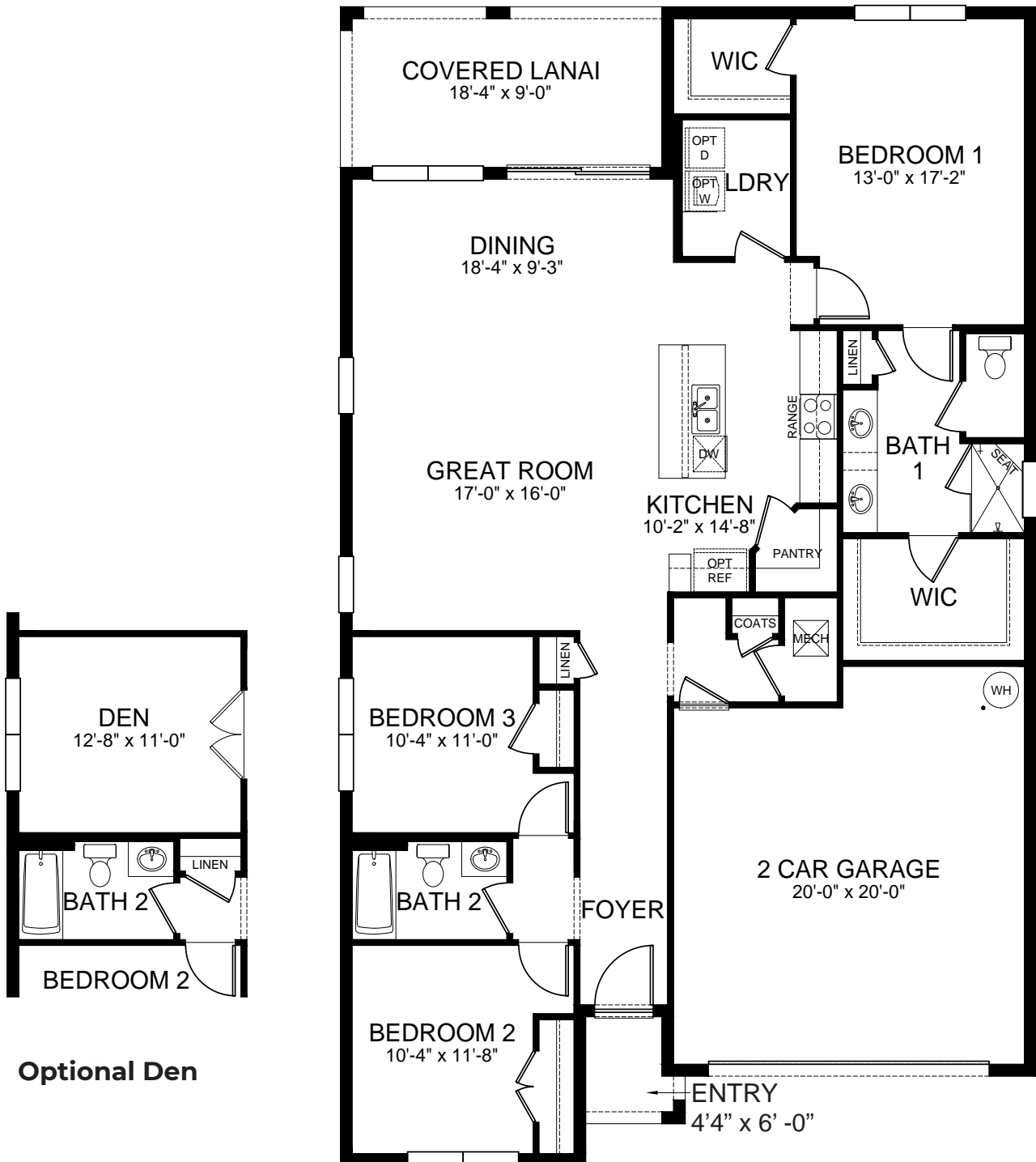


CLIFTON



CLIFTON



Pictures, photographs, colors, features, and sizes are for illustration purposes only and will vary from the homes as built. Square footage dimensions are approximate. See Sales Agent for complete details. 01/14/22. CBC039052.

1,816 Square Feet • 3 Bed • 2 Bath • 2 Car Garage

LAUREL

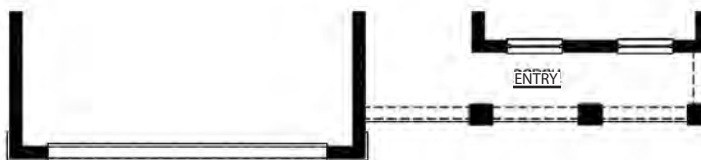


LAUREL



Optional Den

Floor Plan - Elevation B, E and F



Floor Plan - Elevation D



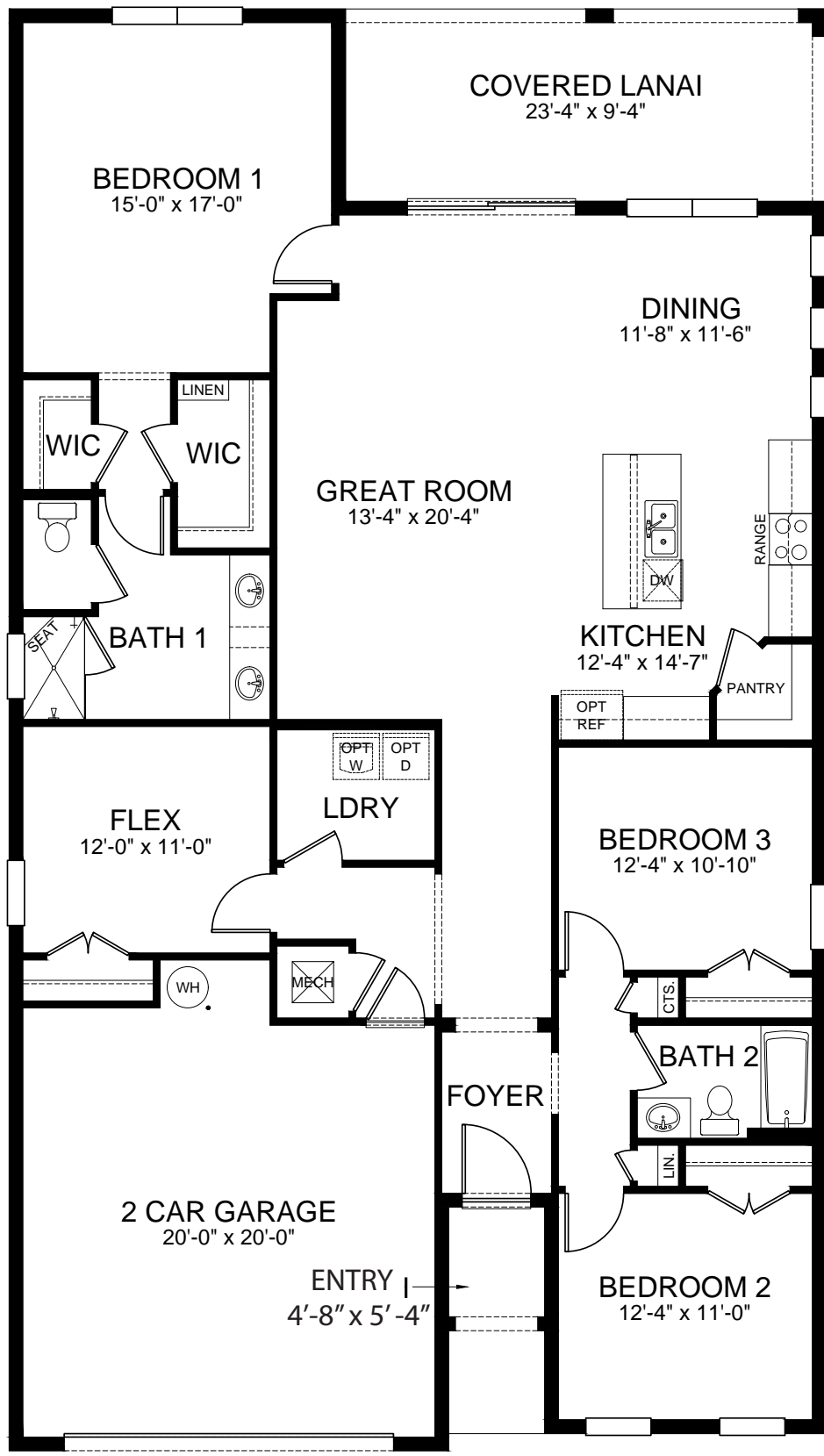
Pictures, photographs, colors, features, and sizes are for illustration purposes only and will vary from the homes as built. Square footage dimensions are approximate. See Sales Agent for complete details. 01/14/22. CBC039052.

1,844 Square Feet • 3 Bed • 2 Bath • 2 Car Garage

DELRAY



DELRAY



Pictures, photographs, colors, features, and sizes are for illustration purposes only and will vary from the homes as built. Square footage dimensions are approximate. See Sales Agent for complete details. 1/14/2022. CBC039052.

2,034 Square Feet • 4 Bed • 2 Bath • 2 Car Garage



STAR FARMS
LAKWOOD RANCH

STAR FARMS AT LAKEWOOD RANCH

INCLUDED FEATURES | FREEDOM

EXTERIOR

Walls: Concrete block
Finishes: Full-textured stucco with additional decorative accents, per plan
Hurricane Shutters: Metal with hardware included
Garage finish: Texture and paint on interior walls
Garage door: Storm-rated with raised-panel design
Driveway: Pavers
Coach lights: Community-coordinated fixtures
Roof shingles: Florida-rated flat tile
Termite treatment: Bora-Care®
Irrigation: Master-controlled sprinkler system for front and sides of homesite
Sod: St. Augustine
Landscaping: Florida-friendly landscape package, per plan
Hose bibs: Two, locations per plan

INTERIOR

Ceilings: Textured; 9'4" height
Walls: Textured with two-coat paint application
Doors: Smooth, two-panel, flat top; Three hinges
Door hardware: Brushed nickel lever
Light Fixtures: LED; Locations per plan
Light switches: Deako Smart Switch; Locations per plan
Smoke detectors: Battery back-up; Locations per plan
Telephone outlet: One, location per plan
Cable outlet: Two, locations per plan
Wall molding: 3¼" colonial baseboards and 2¼" door casings
Floors - Carpet: In bedrooms and flex room, per plan
Floors - Ceramic Tile: 18"x18" in foyer, great room, kitchen, dining room, bathrooms, and laundry room

BATHROOM ONE

Cabinets: Raised vanity with hardware
Countertops: Granite
Sink: Undermount
Faucets: Chrome
Shower: Floor pan, wall tile with niche, and chrome frame glass enclosure
Toilets: Elongated, comfort-height commode

SECONDARY BATHROOMS

Cabinets: Raised vanity with hardware
Countertops: Granite
Sink: Undermount
Faucets: Chrome
Shower: Modular tub/shower combination
Toilets: Elongated, comfort-height commode

KITCHEN

Cabinets: 36" staggered-mount with crown molding & hardware
Countertops: Granite
Sink: Stainless steel, double-compartment, undermount
Faucet: Chrome with integrated pull-out sprayer
Garbage disposal: Moen® ½ hp

APPLIANCES

Range: Stainless steel, electric
Microwave: Stainless steel, over-the-range
Dishwasher: Stainless steel

HOME IS CONNECTED

Voice control: One Amazon Echo Dot
Door bell: Skybell® video door bell + app control
Front door dead bolt lock: Kwikset® Z-Wave + app control
Garage door opener: Two Lift Master® MyQ WIFI + app control
Home hub: Qolsys® IQ2 touchscreen panel + app control
Front exterior light switch: One Z-Wave + app control
Thermostat: Honeywell® T6 Pro Z-Wave + app control

ENERGY SAVING FEATURES

Front door: Storm-rated, insulated fiberglass
Windows: Storm-rated, double-pane, low-E glass
Sliding glass doors: Storm-rated, double-pane, low-E glass
HVAC: High efficiency with heat pump
Insulation-Exterior concrete walls: R-4.1 Fi-Foil
Insulation-Exterior wood-framed garage walls: Fiberglass batt
Insulation-Attic, per plan: R-30 Fiberglass batt or blown
Roof: Radiant Barrier OSB sheathing
Water Heater: 50-gallon electric quick-recovery

QUALITY ASSURANCE

Pre-construction meeting on To-Be-Built homes
 Pre-drywall orientation on applicable inventory homes
 Third-party inspection upon home completion
 New homeowner orientation prior to closing
 10-Year RWC warranty



Standard and optional features may vary. D.R. Horton reserves the right to initiate changes, and availability without prior notice. 02/03/22.
 Contractor License No. CBC039052.

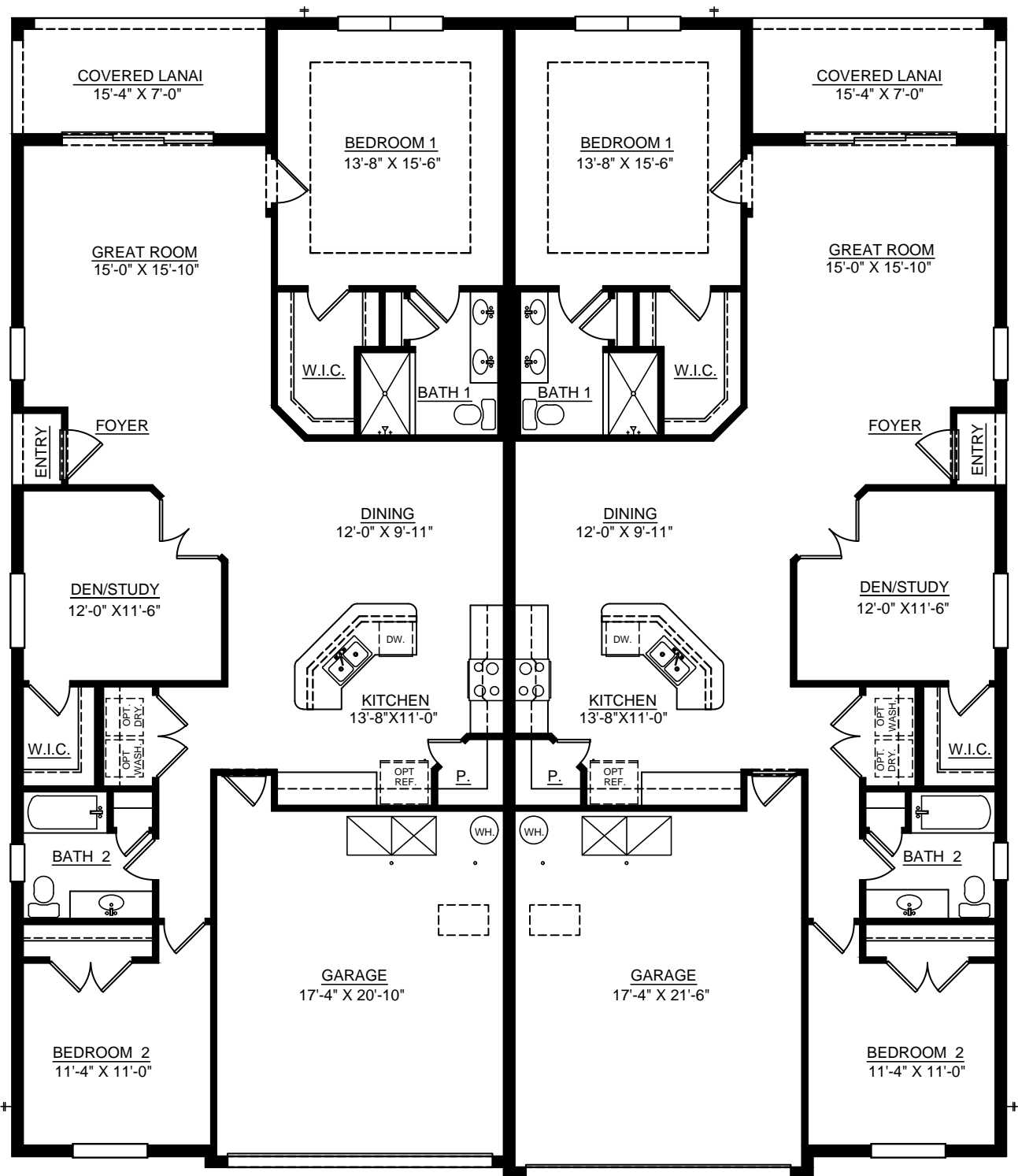
SIESTA



FREEDOM
HOMES

A D.R. Horton Company

SIESTA



Pictures, photographs, colors, features, and sizes are for illustration purposes only and will vary from the homes as built. Square footage dimensions are approximate. See Sales Agent for complete details. 01/14/22. CBC039052.

1,565 Square Feet • 2 Bed plus Den • 2 Bath • 2 Car Garage



EXTERIOR

Walls: Concrete block with concrete block party wall
Finishes: Full-textured stucco with additional decorative accents, per plan
Hurricane Shutters: Metal with hardware included
Garage finish: Texture and paint on interior walls
Garage door: Storm-rated with raised-panel design
Driveway: Pavers
Coach lights: Community-coordinated fixtures
Roof shingles: Florida-rated flat tile
Termite treatment: Bora-Care®
Irrigation: Master-controlled sprinkler system at front and sides of homesite
Sod: St. Augustine
Landscaping: Florida-friendly landscape package, per plan
Hose bibs: Two, locations per plan

INTERIOR

Ceilings: Textured; 9'4" height
Walls: Textured with two-coat paint application
Blinds package: White 2" faux wood on windows and vertical blinds on slider
Doors: Smooth, two-panel, flat top; Three hinges
Door hardware: Brushed nickel knobs
Light Fixtures: LED; Locations per plan
Light switches: Deako Smart Switch; Locations per plan
Smoke detectors: Battery back-up; Locations per plan
Telephone outlet: One, location per plan
Cable outlet: Two, locations per plan
Wall molding: 3¼" colonial baseboards and 2¼" door casings
Floors - Carpet: In bedrooms and flex room, per plan
Floors - Ceramic Tile: 18"x18" in foyer, great room, kitchen, dining room, bathrooms, and laundry room

BATHROOM ONE

Cabinets: Raised vanity
Countertops: Granite
Faucets: Chrome
Shower: Floor and wall tile with niche and chrome frame glass enclosure
Toilets: Elongated commode

SECONDARY BATHROOMS

Cabinets: Raised vanity
Countertops: Granite
Faucets: Chrome
Shower: Tub with wall tile
Toilets: Elongated commode

KITCHEN

Cabinets: 36" staggered-mount with crown molding
Countertops: Granite with 3"x6" backsplash
Sink: Stainless steel, double-compartment, undermount
Faucet: Chrome with integrated pull-out sprayer
Garbage disposal: Moen® ½ hp

APPLIANCES

Range: Stainless steel, electric
Microwave: Stainless steel, over-the-range
Refrigerator: Stainless steel, side-by-side
Dishwasher: Stainless steel
Laundry: White, top-load washer and front-load dryer

HOME IS CONNECTED

Voice control: One Amazon Echo Dot
Door bell: Skybell® video door bell + app control
Front door dead bolt lock: Kwikset® Z-Wave + app control
Garage door opener: Pre-wire
Home hub: Qolsys® IQ2 touchscreen panel + app control
Front exterior light switch: One Z-Wave + app control
Thermostat: Honeywell® T6 Pro Z-Wave + app control

ENERGY SAVING FEATURES

Front door: Storm-rated, insulated fiberglass
Windows: Storm-rated, double-pane, low-E glass
Sliding glass doors: Storm-rated, double-pane, low-E glass
HVAC: High efficiency with heat pump
Insulation-Exterior concrete walls: R-4.1 Fi-Foil
Insulation-Exterior wood-framed garage walls: Fiberglass batt
Insulation-Attic, per plan: R-30 Fiberglass batt or blown
Water Heater: 50-gallon electric quick-recovery

QUALITY ASSURANCE

Pre-construction meeting on To-Be-Built homes
 Pre-drywall orientation on applicable inventory homes
 Third-party inspection upon home completion
 New homeowner orientation prior to closing
 10-Year RWC warranty



Standard and optional features may vary. D.R. Horton reserves the right to initiate changes, and availability without prior notice. 02/03/22.
 Contractor License No. CBC039052.



COMMUNITY INFORMATION

STAR FARMS

LAKEWOOD RANCH

ADVENTURE MEMBERS



TOTAL HOMESITES: 404
Freedom Villas: 192
Freedom Single Family Homesites: 212
Total Homesites In Community: 1,411



COMMUNITY AMENITIES: Gated | Club House | Resort Pool | Sports Courts
 Pickle Ball Courts | Tennis Courts | Bocce Courts | Lawn Care Included
 Wellness Complex



MONTHLY HOA: Villas: \$319.21 | **Single Family 50' Lots:** \$340.21
ANNUAL CDD: Villas: \$1,584 | **Single Family 50' Lots:** \$1,902



SCHOOLS:
 B.D. Gullet Elementary
 Dr. Mona Jain Middle
 Lakewood Ranch High



MASTER HOA MANAGEMENT: Star Farms at Lakewood Ranch Community Association | Access Management | (813) 607 - 2220 | starfarms@accessdifference.com
CDD MANAGEMENT: Lakewood Ranch Stewardship District | PFM Group Consulting LLC | (407) 723 - 5900



UTILITIES & SERVICES
Electric: PRECO
TV/Internet/Phone: Frontier & Spectrum
Water/Sewer/Waste: Manatee County
Police/Fire: Manatee County



SALES OFFICE
 Mon - Sun Call For Information | Phone (844) 261 - 0038

D.R. Horton is A Equal Housing Opportunity Builder. A complete copy of the recorded Association's current budget, covenants, protective restrictions, by-laws & articles of incorporation documents are gladly provided upon request. Subject to change without notice. This flyer is subject to errors and omissions. All rights reserved. Buyer should conduct his or her own investigation of the present and future availability of school districts and school assignments. D.R. Horton has no control or responsibility for any changes to school districts or school assignments should they occur in the future. CBC039052

