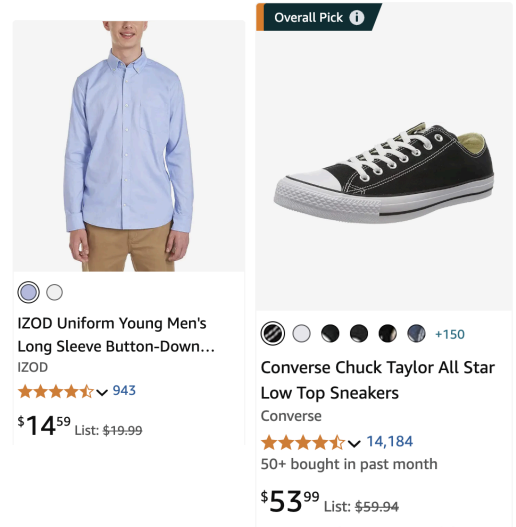


Little Shop of Horrors - Costume Plot

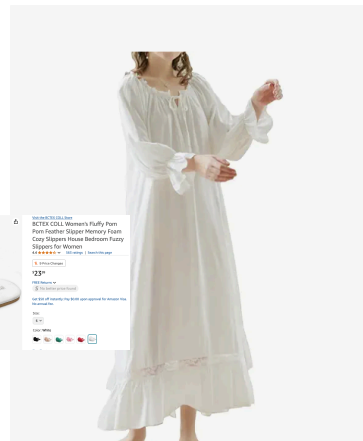
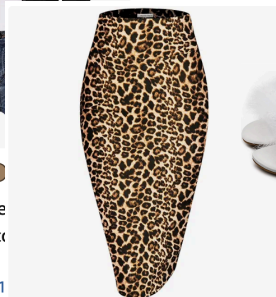
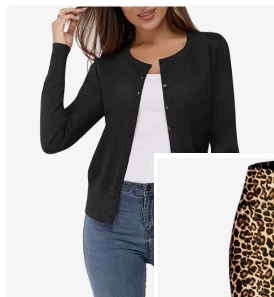
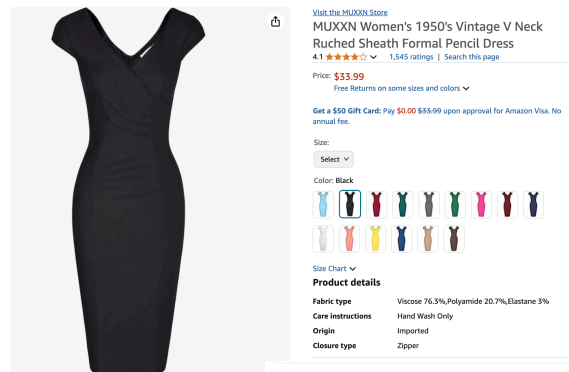
Character: Seymour Krelborn

- **Everyday Wear:** Plain light blue button-up shirt, khaki or brown pants, nerdy glasses, converse shoes- black.
- **Work Attire:** Same as everyday wear with an 1/2 apron added.
- **Act 2 Upgrade:** Slightly improved look— add sweater vest- we have this, suit coat- we have plenty?
- **Final Scene:** Torn or disheveled clothing, reflecting stress and desperation.



Character: Audrey

- **Everyday Wear:** Vintage-style 1960s dresses in bright or pastel colors, high heels, signature platinum blonde wig, bold makeup. Needs over coat- black or gray. Leopard pencil skirt, black cardigan,
- **Night Attire:** A night gown, cute slippers for "Sominex", hair tied up with ribbon
- **Final Scene:** Torn or slightly ruined



+5 other colors/patterns

Sponsored ⓘ

Women's Mary Jane Pumps
Chunky Block Shoes Heart...

Erocalli

4.5 stars, 466 reviews

50+ bought in past month

\$39.98 Typical: \$43.99

Buy for \$35.98 with coupon (some restrictions apply)

Character: Mr.

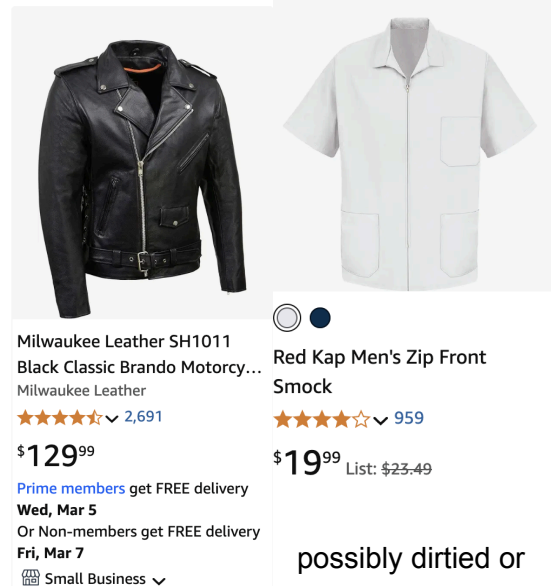


Mushnik

- **Shop Attire:** Brown or navy suit or vest with a dress shirt and tie, apron for working in the shop, hat and over coat. Maybe a cane!
- **Final Scene:** Same outfit, slightly more disheveled.

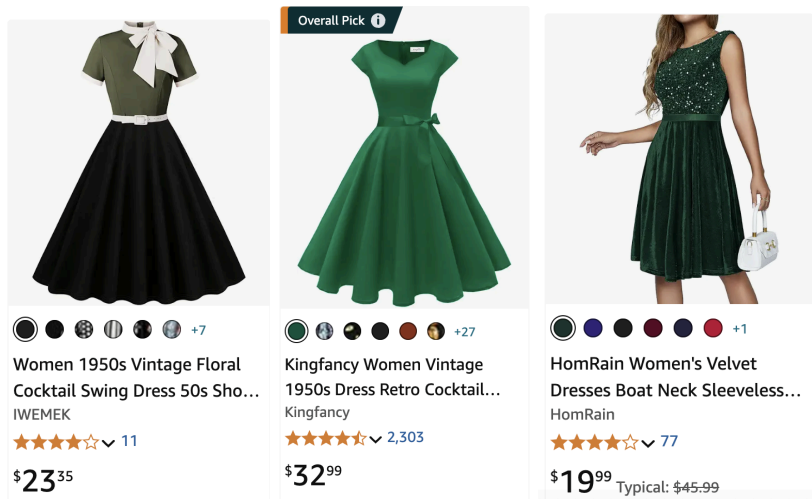
Character: Orin Scrivello (The Dentist)

- **First Appearance:** Leather jacket- we have this!, black jeans, white T-shirt- DDS, slicked-back hair, motorcycle boots. We have all this in costume room
- **Dentist Attire:** White dental smock, aqua green gloves, and a mask (worn around neck or face occasionally for effect- Heidi-props). See photo.
- **Final Scene:** Same as dentist attire, altered to show demise.



Characters: The Urchins (Crystal, Ronette, Chiffon)

- **Standard Attire:** Coordinated 1960s-inspired street clothes with a Motown girl-group flair. Dresses or skirts with bold prints, sequins, or sparkles. See Debora- Amazon dresses- images below. White sneakers- see below in Ensemble costume plot.
- **Act 2 / Performance Look:** Dressier and more glamorous outfits, reflecting their role as narrators with growing influence.



Ensemble / Additional Characters

- **Customers, Passersby, and Radio Announcer:** 1955-1960s casual wear- should have plenty in costume room, business attire- plenty of odd plaid suits on hand, or shop customers' clothing. Saddle shoes or all white "sneakers", or tan dance shoes from the costume room.
- **Featured Dancers / Performers:** Stylish, period-appropriate costumes with occasional extravagant looks for musical numbers.
- **Ensemble Group B.-** Props- HUGE red toothbrushes for choreography for "Dentist" - 6-8 students
- **Ensemble A-** coveralls or bibs and hard hats. For "Closed for Renovations"-----> 6-8 students

