

TOWN OF MANSFIELD

Mansfield Fire Department

Office of Fire Marshal

AUDREY P. BECK BUILDING

TELEPHONE (860) 429-3328 4 SOUTH EAGLEVILLE ROAD
FACSIMILE (860) 429-3388 MANSFIELD, CT 06268-2599
WWW.MANSFIELDCT.GOV FIREMARSHAL@MANSFIELDCT.ORG



A fire in your unit or your neighbors' unit could happen:

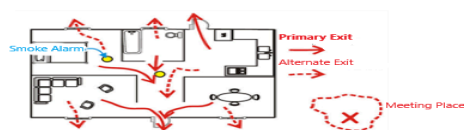
- on a hot afternoon in September a fully involved building fire could grow so rapidly that firefighters are ordered out of the building due to deteriorating conditions and it takes many agonizing hours to account for all residents;
- on a cold December night residents may remain asleep at a time of fire emergency that requires rescue, those residents could be awakened to sight of firefighter in their bedroom;
- On a sunny May morning a fire could displace residents who have to leave their units not knowing what to do next...

Will you know what to do?

Prevention: Each of us needs to make an effort toward fire prevention and safety in our homes. Please take a few minutes to do a self-inspection of your unit. The following checklist can be used to help find some of the most common fire and safety hazards. Any areas that are checked NO could be a potential fire or safety hazard and should be corrected as soon as possible.

- | | |
|--|--|
| Yes <input type="checkbox"/> No <input type="checkbox"/> | Are household chemicals kept in properly labeled containers and away from children? |
| Yes <input type="checkbox"/> No <input type="checkbox"/> | Can everyone hear the sound of the smoke alarm and know what it is? |
| Yes <input type="checkbox"/> No <input type="checkbox"/> | Have you changed your smoke alarm and CO detector batteries this year? Changing clocks to and from Daylight Savings Time is a good way to remember this. |
| Yes <input type="checkbox"/> No <input type="checkbox"/> | Are all exits kept clear of toys, furniture and clutter? |
| Yes <input type="checkbox"/> No <input type="checkbox"/> | Do the windows and doors work properly and can the person using these exits open them? |
| Yes <input type="checkbox"/> No <input type="checkbox"/> | Are appropriate ashtrays or other approved containers used for discarding smoking material? |
| Yes <input type="checkbox"/> No <input type="checkbox"/> | Is cooking on the stove supervised by an adult and never left unattended? |
| Yes <input type="checkbox"/> No <input type="checkbox"/> | Are curtains, towels, pot holders, boxes, paper and other things that can burn kept well away from the stove top and counter near the stove? |
| Yes <input type="checkbox"/> No <input type="checkbox"/> | Is the pan lid nearby to use in case a fire starts in the pan? |
| Yes <input type="checkbox"/> No <input type="checkbox"/> | Are pan handles turned inward so they cannot be bumped? |
| Yes <input type="checkbox"/> No <input type="checkbox"/> | Is there a "Kid-Free" zone three feet around the stove when grown-ups are cooking? |
| Yes <input type="checkbox"/> No <input type="checkbox"/> | Are extension cords being used properly? Cords should not be used to replace permanent wiring, covered with rugs or carpets, or across doorways. |
| Yes <input type="checkbox"/> No <input type="checkbox"/> | Are electrical appliances in good repair? Replace all electrical cords that are frayed or worn. |
| Yes <input type="checkbox"/> No <input type="checkbox"/> | Are electrical lights clear of combustible materials? |
| Yes <input type="checkbox"/> No <input type="checkbox"/> | Are electric light bulbs the proper wattage for the fixtures they are installed in? |
| Yes <input type="checkbox"/> No <input type="checkbox"/> | Are UL approved power strips being used in electrical circuits with multiple appliance |

Plan & Prepare: Everyone should know how to escape if there is a fire in their unit. By following these simple safety tips, you can create a home escape plan that's right for you. Draw an escape plan that shows two ways out of every room, especially your BEDROOM, in case of a nighttime fire!



- Make sure windows and doors can be unlocked and opened quickly.
- Know the emergency meeting place at your building where you will gather.
- Make provisions for infants, young children, disabled or elderly.
- Review your escape plan with your family or roommates at least once a year.
- Test the smoke alarms once a month and change the battery each year.
- Sleep with bedroom doors closed.
- Your SMOKE ALARM is your life preserver. It wakes you in the middle of the night giving you precious time to get out! **EVERY MINUTE COUNTS!**

Escape: *If a fire breaks out in your unit or the building, remember the following tips:*

- Check the door with the back of your hand – if you feel heat, you may need to use your second exit.
- If there is smoke, crawl on your hands and knees to the nearest exit.
- Teach children how to get out of the unit and building and go to the meeting place.
- Teach children not to hide from firefighters.
- Call emergency number for the fire department (**911**) from a neighbor's unit or a cell phone.
- Do not waste any time saving property. **NEVER** go back inside a burning building or unit.

If you are trapped in a room:

- Stay low near a door or window.
- Put blankets, rugs, or pillows at the bottom of the door to keep smoke out.
- Signal out the window with a sheet, towel or flashlight.

In the event of a fire or emergency, the management company will arrange for a location to gather all residents and the Mansfield Fire & Emergency Services personnel to provide information as it becomes available. If someone from your unit is missing at the meeting place, tell firefighters where that person may be.

Additional information can be found at: HYPERLINK "<http://www.mansfieldct.gov>" www.mansfieldct.gov, select Departments then Fire Marshal.

Are you prepared for other types of emergencies such as a hurricane, tornado, flooding, an ice storm, major snowfall, or power outage?

Review HYPERLINK "<http://www.mansfieldct.gov>" www.mansfieldct.gov, select Departments then Emergency Management to learn more.

You can also find details on how you can prepare at HYPERLINK "<http://www.ct.gov/demhs>" www.ct.gov/demhs and HYPERLINK "<http://www.ready.gov>" www.ready.gov.

In the event of an emergency, sources of information include: Connecticut radio and television stations,

Local TV Channel 13 and town internet website, and United Way Information Line 2-1-1.