

S-24 | SN-24 | S-24C



Mid-America Series

2 LAYERS OR 1 LAYER
STEEL PAN DOOR

DEEP GROOVES
THICKNESS 2"

POLYSTYRENE + VINYL BACKING (R-5.4 OR R-6.6) OR NON-INSULATED



12' x 14', White doors

FEATURES AND BENEFITS

A DEEP-GROOVED STEEL WALL

- Providing more **strength** and **additional bending resistance**, our sections are made with 1/2" deep and 2" wide horizontal grooves with alternating smaller grooves.

B OPTIONAL POLYSTYRENE INSULATION

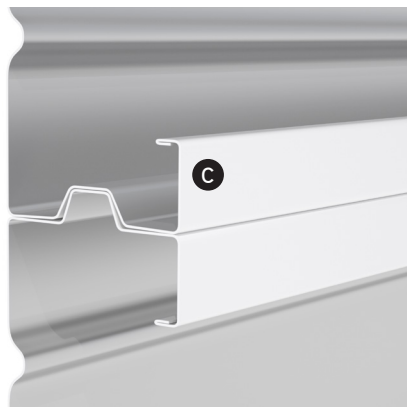
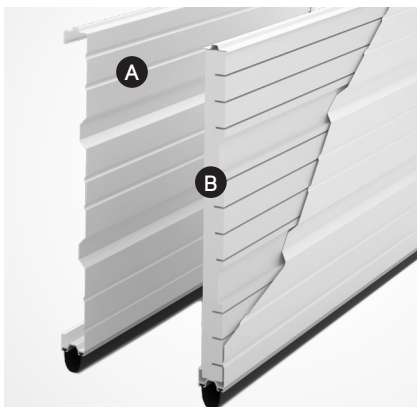
- For energy savings, polystyrene insulation protected with a vinyl backing is available.

C SECTION PROFILE

- Rails are hemmed the entire length of the section for added **sturdiness** and **dependability**.

D CENTER AND END STILES

- With a fully hemmed edge for added **strength** and **safety**, all stiles are pre-punched with extruded holes for secure attachment of hinges and hardware components.



PANEL CONSTRUCTION

1 Hot-dipped galvanized steel wall

- Baked-on polyester paint. Can be repainted
- Corrosion resistant

	S-24	SN-24	S-24C
Exterior steel skin	24-gauge	25-gauge	24-gauge
Exterior side finish	Smooth	Smooth	Woodgrain

2 2" (50 mm) door

- Optional CFC-free **polystyrene insulation covered with a vinyl backing** ensuring a thermal-resistance rating of **R-5.4** (RSI 1.0 or $k=1.000 \text{ W/m}^2\text{K}$) for S-24 and SN-24 and R-6.6 (RSI 1.2 or $k=0.860 \text{ W/m}^2\text{K}$) for S-24C.

3 Sections are made with 1/2" (13 mm) deep and 2" (50 mm) wide grooves providing more strength to the door.

4 Tongue & groove joints between sections that fit seamlessly.

5 Bottom weatherstripping

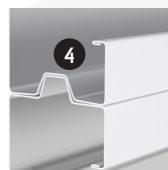
S-24 and SN-24: continuous astragal made of U-shaped flexible vinyl and held in place by an aluminum retainer for the S-24 and by a vinyl retainer for the SN-24.

S-24C: continuous, flexible, semi-circular, U-Shape PVC.

6 Vertical center stiles

S-24 and SN-24: 18-gauge galvanized steel provides a rock solid base and the pre-punched holes help to affix hinges and struts. One edge is hemmed to add more strength to the section.

S-24C: 20-gauge galvanized steel attached by a Tog-L-Loc® joining system, with no welding and rivets, at hinge placement locations.



Door weight:

	S-24	SN-24	S-24C
Insulated	1.59 lb/ft ² (7.8 kg/m ²)	1.50 lb/ft ² (7.3 kg/m ²)	1.42 lb/ft ² (6.9 kg/m ²)
Non-insulated	1.44 lb/ft ² (7.0 kg/m ²)	1.34 lb/ft ² (6.5 kg/m ²)	1.28 lb/ft ² (6.2 kg/m ²)

COLORS

S-24 and SN-24



White

S-24C



Ice White

Colors may slightly vary from images.

SIZES

	S-24	SN-24	S-24C
Widths In 1" (25 mm) increments	From 5' to 30'2" (1.2 m to 9.2 m)	From 5' to 20'2" (1.2 m to 6.1 m)	From 5' to 24'2" (1.5 m to 7.3 m)
Heights In 3" (76 mm) increments	From 6' to 22' (1.8 m to 6.7 m)	From 6' to 14' (1.8 m to 4.3 m)	From 8' to 18' (2.4 m to 5.5 m)

WINDOWS

S-24 and SN-24 Standard Windows

24" x 6" (610 mm x 152 mm) or

25" x 13" (635 mm x 330 mm)

Thermopane 1/2": Clear

Single glass 1/8": Clear

Color: Black

S-24C Standard Windows

21" x 13" (533 mm x 330 mm)

Single glass 1/8": Clear or Sandblasted

Color: White

For more details, visit:

garaga.com/windows-s24



garaga.com
info@garaga.com

US Head Office
1 800 364-3667
Ponca City, OK

Canadian Head Office
1 800 464-2724
St-Georges, QC

PANEL DESIGN



Deep Grooves
1/2" deep, 2" wide

HARDWARE

See details with your Garaga dealer.

WARRANTY (LIMITED)

1 year against structural failures.

YOUR
DISTRIBUTOR

FSC LOGO