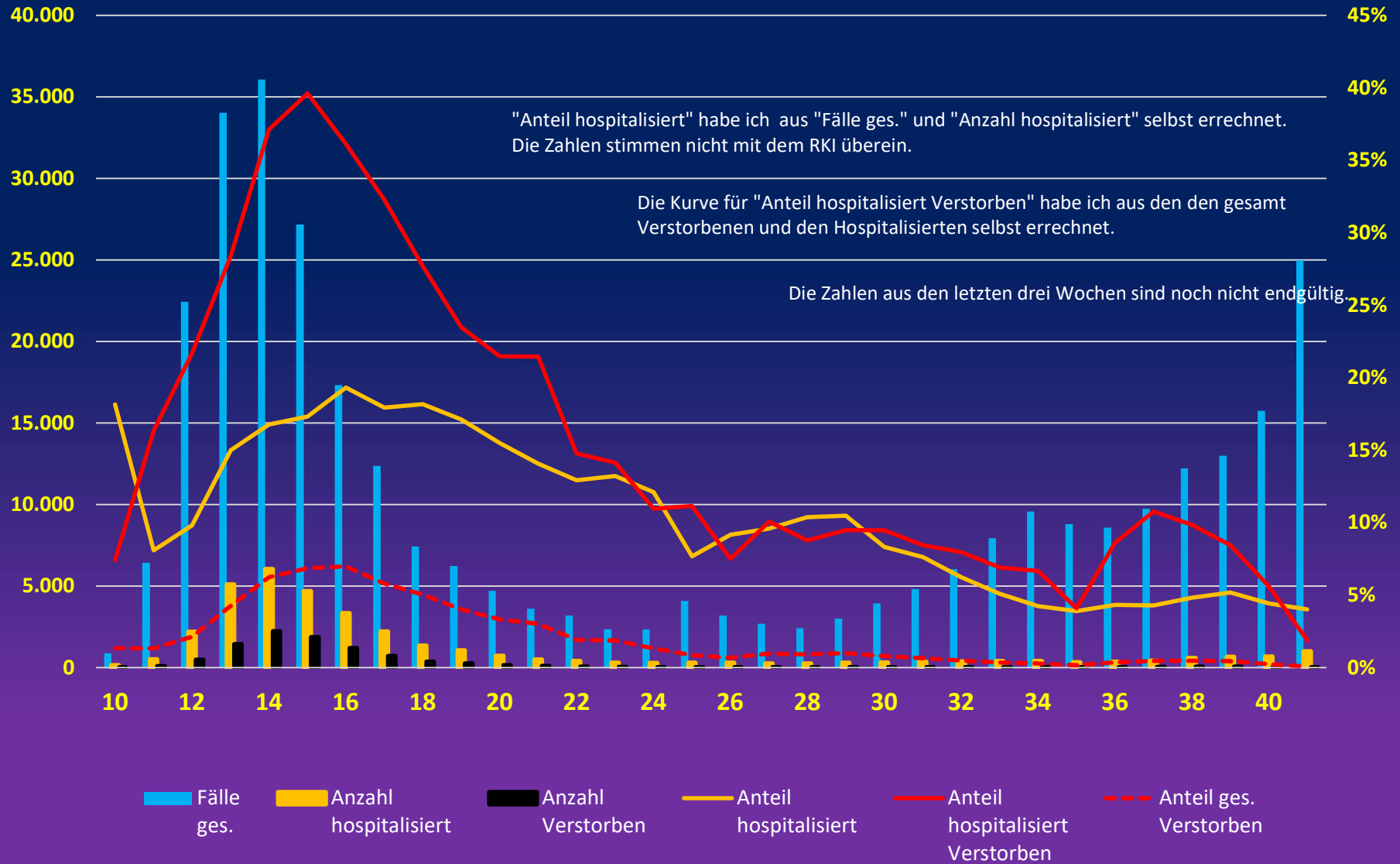


### Fälle - Hospitalisation - Verstorben / Woche



Stand: 13.10.2020

KW 1-10 wurden zusammengefasst

KW	Fälle ges.	mittl- Alter	Männer	Frauen	Anzahl mit klinischen Infor- mationen	Anteil keine, bzw. keine für COVID-19 bedeutsamen Symptome	Anz. mit Angab. zur Hospitalisie- rung	Anzahl hospitalisiert	Anteil hospitalisiert	Anzahl Verstorben	Anteil ges. Verstorben	Anteil hospitalisiert Verstorben	Zahlen unvoll- ständig
10	892	42	53%	47%	831	7,6%	800	162	18,16%	12	1,35%	7,41%	
11	6.430	44	56%	44%	5772	5,2%	5611	520	8,09%	85	1,32%	16,35%	
12	22.431	45	55%	45%	20189	3,8%	19334	2.203	9,82%	478	2,13%	21,70%	
13	34.018	48	49%	51%	30825	3,2%	29437	5.102	15,00%	1449	4,26%	28,40%	
14	36.068	51	45%	55%	31952	5,3%	31461	6.049	16,77%	2246	6,23%	37,13%	
15	27.164	52	44%	56%	23549	8,3%	24022	4.705	17,32%	1864	6,86%	39,62%	
16	17.334	51	45%	55%	14838	11,3%	15479	3.350	19,33%	1210	6,98%	36,12%	
17	12.367	50	45%	55%	10255	14,0%	10922	2.218	17,93%	716	5,79%	32,28%	
18	7.429	48	48%	52%	6233	17,7%	6580	1.350	18,17%	374	5,03%	27,70%	
19	6.221	47	48%	52%	5215	19,8%	5596	1.065	17,12%	250	4,02%	23,47%	
20	4.722	45	49%	51%	3923	23,4%	4196	731	15,48%	157	3,32%	21,48%	
21	3.612	43	50%	50%	2810	26,4%	3104	508	14,06%	109	3,02%	21,46%	
22	3.198	42	51%	49%	2530	23,4%	2756	413	12,91%	61	1,91%	14,77%	
23	2.352	39	51%	49%	1830	23,2%	2072	311	13,22%	44	1,87%	14,15%	
24	2.339	37	54%	46%	1728	24,4%	2072	283	12,10%	31	1,33%	10,95%	
25	4.088	36	59%	41%	2928	25,1%	3731	314	7,68%	35	0,86%	11,15%	
26	3.197	37	55%	45%	2309	23,3%	2834	293	9,16%	22	0,69%	7,51%	
27	2.693	36	52%	48%	2061	26,9%	2464	258	9,58%	26	0,97%	10,08%	
28	2.417	36	56%	44%	1908	24,3%	2185	251	10,38%	22	0,91%	8,76%	
29	3.016	36	53%	47%	2349	22,8%	2627	316	10,48%	30	0,99%	9,49%	
30	3.930	36	52%	48%	3132	27,1%	3417	327	8,32%	31	0,79%	9,48%	
31	4.814	36	50%	50%	3582	24,6%	4055	367	7,62%	31	0,64%	8,45%	
32	6.035	34	54%	46%	4389	30,3%	5136	377	6,25%	30	0,50%	7,96%	
33	7.929	32	53%	47%	5601	33,4%	6757	405	5,11%	28	0,35%	6,91%	
34	9.578	32	55%	45%	6980	34,9%	8035	405	4,23%	27	0,28%	6,67%	
35	8.796	32	53%	47%	6577	31,2%	7103	343	3,90%	14	0,16%	4,08%	
36	8.585	33	54%	46%	6321	27,2%	6815	372	4,33%	32	0,37%	8,60%	
37	9.741	35	52%	48%	7066	20,5%	7556	418	4,29%	45	0,46%	10,77%	
38	12.229	36	51%	49%	8877	18,7%	9407	589	4,82%	58	0,47%	9,85%	
39	12.995	37	52%	48%	9232	18,5%	10049	674	5,19%	57	0,44%	8,46%	x
40	15.745	38	52%	48%	10787	17,2%	12123	696	4,42%	39	0,25%	5,60%	x
41	24.983	39	51%	49%	14080	16,6%	16649	1.005	4,02%	19	0,08%	1,89%	x