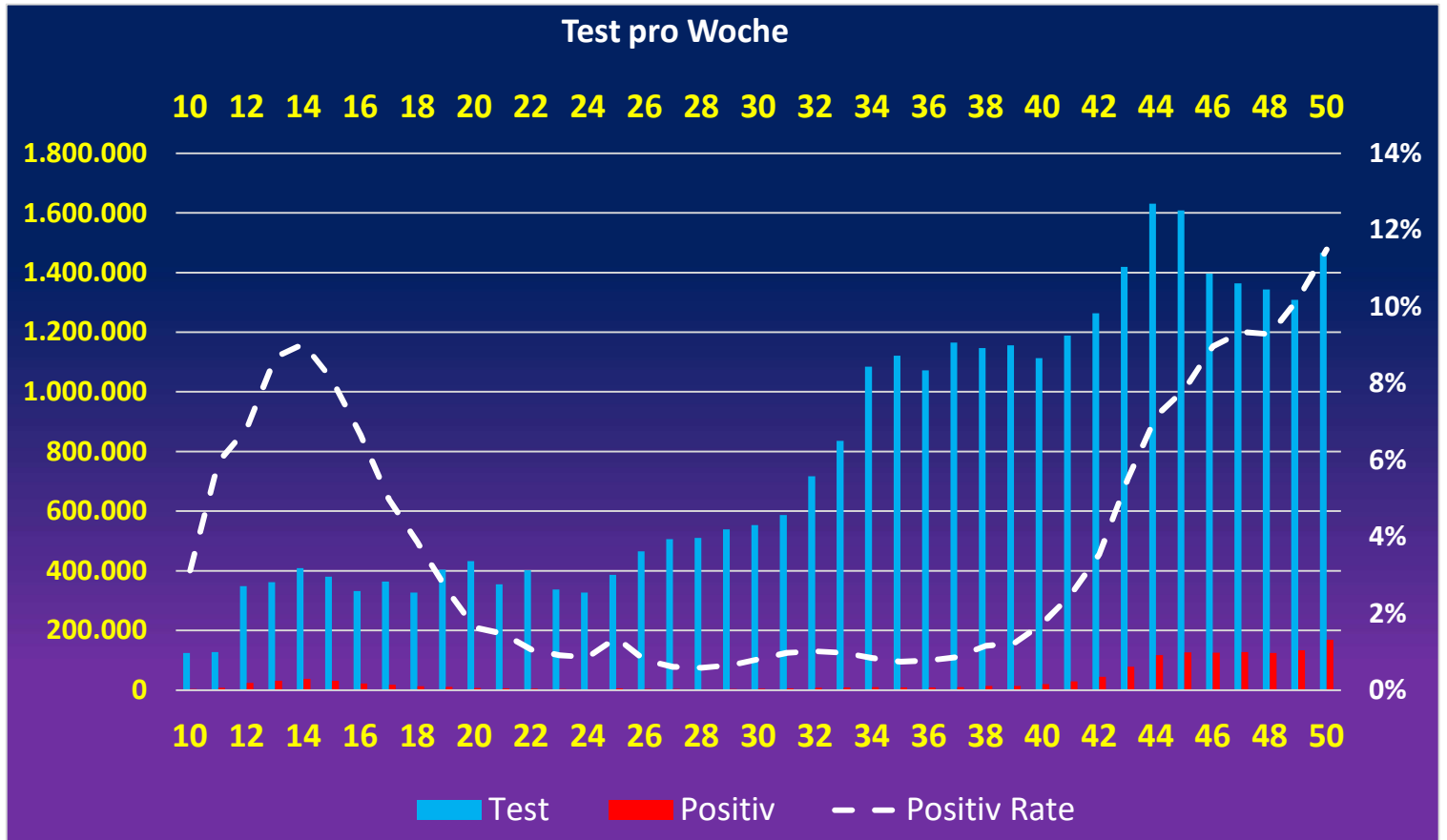


Stand: 16.12.2020



Stand:
16.12.2020
KW 1-10 wurden
zusammengefasst

KW	Test	Positiv	Positiv-Rat
10	124.716	3.892	3,12%
11	127.457	7.582	5,95%
12	348.619	23.820	6,83%
13	361.515	31.414	8,69%
14	408.348	36.885	9,03%
15	380.197	30.791	8,10%
16	331.902	22.082	6,65%
17	363.890	18.083	4,97%
18	326.788	12.608	3,86%
19	403.875	10.755	2,66%
20	432.076	7.080	1,64%
21	354.260	5.228	1,48%
22	401.589	4.267	1,06%
23	337.217	3.085	0,91%
24	327.196	2.816	0,86%
25	386.316	5.276	1,37%
26	464.626	3.682	0,79%
27	506.459	3.092	0,61%
28	510.551	2.992	0,59%
29	538.701	3.497	0,65%
30	553.429	4.458	0,81%
31	586.620	5.738	0,98%
32	716.768	7.263	1,01%
33	835.384	8.121	0,97%
34	1.084.446	9.143	0,84%
35	1.120.883	8.323	0,74%
36	1.072.316	8.294	0,77%
37	1.164.932	10.046	0,86%
38	1.146.565	13.261	1,16%
39	1.155.995	14.094	1,22%
40	1.112.967	19.407	1,74%
41	1.188.338	29.567	2,49%
42	1.263.716	44.759	3,54%
43	1.418.726	78.106	5,51%
44	1.631.343	116.673	7,15%
45	1.608.125	126.141	7,84%
46	1.396.088	125.200	8,97%
47	1.363.701	127.330	9,34%
48	1.343.157	124.687	9,28%
49	1.308.629	133.681	10,22%
50	1.465.732	168.483	11,49%
Ges.	31.974.158	1.421.702	