

Real-Time X-ray for Failure Analyses

- HiFunda received a Utah manufacturing modernization grant (UTMMG)¹ to purchase advanced manufacturing and quality inspection equipment.
- Creative Electron Truview™ Fusion Real-time X-ray System² for inspection of assemblies for failure analyses, process qualifications, and reverse engineering applications:

X-ray Source: Up to 130kV

Image Detector: 6"x6" Focal plane detector

Manipulator: Manually-controlled stage X, Y, Zoom, and Tilt

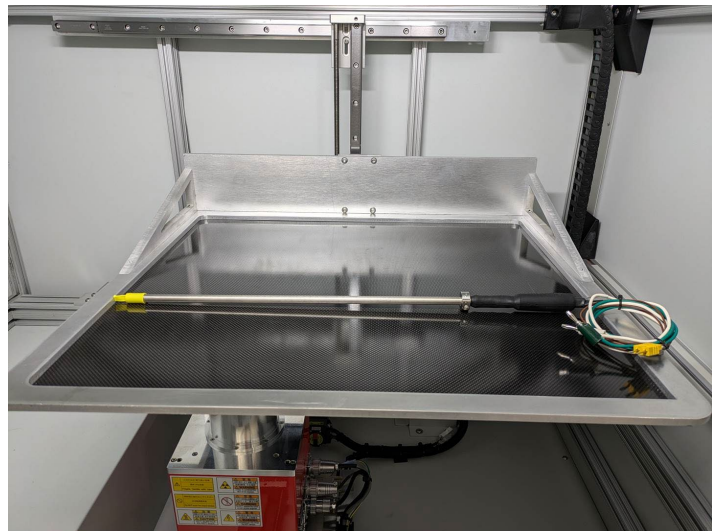
Sample Stage & Chamber: 20" x 20" x 20"

System Dimensions: 48" x 36" x 65"

Magnification: Up to 2000 times

Radiation Safety: FDA compliant and CE certified

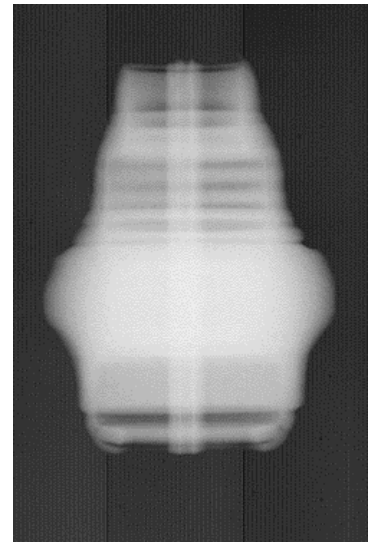
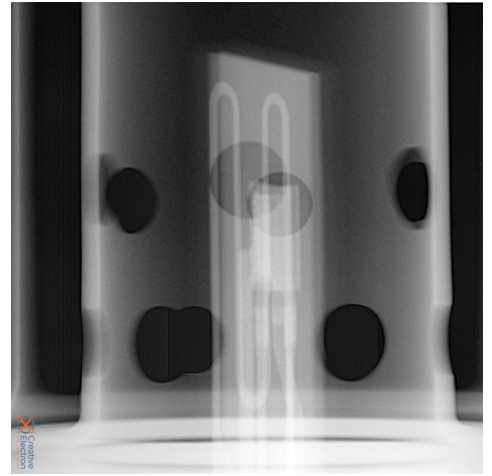
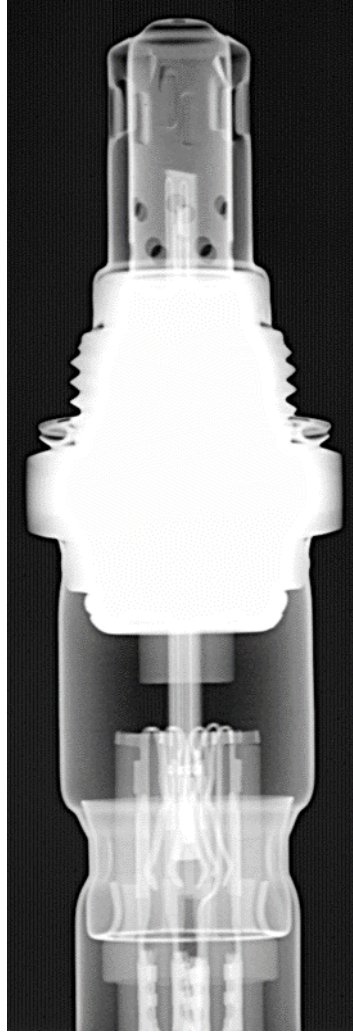
Contact HiFunda for a free initial consultation to evaluate our real-time X-ray inspection system for your application



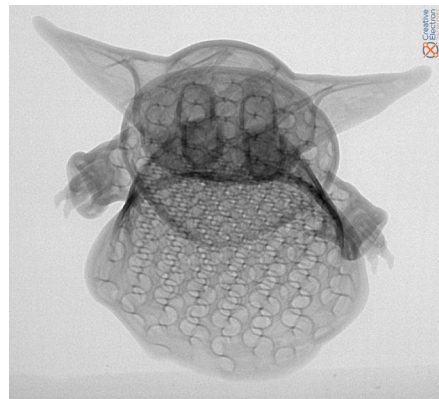
20"x20"x20" stage and chamber accommodates large parts (HTRE)

1. <https://business.utah.gov/news/manufacturing-modernization-grant-awardees-announced/>
2. <https://creativeelectron.com/fusion/>

Real-Time X-ray Example Images



Optical and X-ray Images of 5-Wire Automotive Oxygen Sensor with Integral Heater



Optical and X-ray Images of 3D-printed PLA Yoda showing the Gyroid fill pattern

Additional X-ray images can be found in Creative Electron's Image Library <https://creativeelectron.com/gallery/>
<https://media.creativeelectron.com/porosity-breaking-your-plastic/>