

The background of the entire page is a close-up, high-angle photograph of several different tyre tread patterns. The patterns are dark grey or black with varying textures and grooves. Some patterns have white markings, including the word 'RADIAL' and 'RAC' followed by numbers like '12' and '40'.

TRSO



Tyre & Retread Supplies

**PRODUCT CATALOGUE
2023**

Tyre Repairs with Excellence

In short



Tyre and Retread Supplies (PTY) Ltd is a national supplier serving the tyre repair and retread industries in Southern Africa since 2004.

We currently supply industry leading products to our customers in and around Southern Africa. Tyre and Retread Supplies have partnered with the Vipal brand to provide our customers with the finest repair material known to the industry. From day to day consumables to specialized equipment, our approach is diversified and our product resources unlimited.

Established in Nova Prata in 1973, Borrachas Vipal is the company that originated the Vipal Group. Today, Vipal is one of the most important global manufacturers of tyres and tyre / retread and repair products. Vipal offers a complete range of products for the market, combining quality, technology and innovation.

As the pioneer in the chemical vulcanization technology in Brazil, all repair services offered provide increased tyre life, which is a key element in the daily routine of the transport activity.

Together, we serve our customers with quality products with the highest levels of service, at a competitive price.

TUBE PATCHES

Uses the cold cure (chemical) system which does not submit the inner tubes to heat, prolonging their useful life. Furthermore, its extra-thin thickness and expansion capacity follow the tube's elasticity, preventing callosity formation.

ROUND TUBE PATCHES

CODE	DESCRIPTION	UNIT/BOX
R-00	30mm Round	100
R-01	40mm Round	100
R-02	50mm Round	40
R-03	60mm Round	40
R-04	80mm Round	40
R-05	100mm Round	25
R-06	120mm Round	25



OVAL TUBE PATCHES

CODE	DESCRIPTION	UNIT/BOX
R-300	75 X 40MM	25
R-301	95 X 50MM	25
R-302	120 X 60MM	25
R-303	150 X 70MM	25
R-304	180 X 95MM	25



UNIVERSAL NAIL HOLE PATCHES

To repair 3, 6 and 8mm damages on Radial and Bias ply tyres in the tread and side wall areas of passenger and light truck tyres.

CODE	DESCRIPTION	UNIT/BOX
VF-06	50 X 50MM	50
VF-08	67 X 67MM	50



RADIAL TYRE PATCHES Passenger & Truck

Constructed of Nylon ply layers obeying the same direction as the manufacturing of Radial tyre casing plies. Chemical backing to be used with chemical vulcanizing cement or float with cushion gum for “hot” repair. Shelf life is 36 months.



CODE	DESCRIPTION	PLIES	UNIT/BOX
RAC-10	75 X 55mm	1	20
RAC-12	115 x 70mm	1	10
RAC-14	130 x 85mm	1	10
RAC-20	120 x 80mm	2	10
RAC-22	165 x 75mm	2	10
RAC-24	215 x 75mm	2	10
RAC-25	125 x 115mm	3	10
RAC-35	195 x 95mm	4	10
RAC-40	200 x 100mm	3	10
RAC-42	260 x 130mm	4	10
RAC-44	335 x 130mm	4	10
RAC-45	230 x 180mm	4	5
RAC-46	440 x 175mm	4	5

RADIAL TYRE PATCHES Farm Equipment

Especially designed for Radial tyres employed in this type of work. Its construction, based on Radial patch technology to be applied on the centre of the damaged area, intends to offer maximum resistance and flexibility for improved performance of these tyre features that are submitted to severe working conditions.



CODE	DESCRIPTION	PLIES	UNIT/BOX
RAC-80	195 x 150mm	2	5
RAC-82	255 x 190mm	3	5
RAC-84	290 x 215mm	3	5
RAC-86	345 x 250mm	3	5

RADIAL TYRE PATCHES KEVLAR

Constructed out of Kevlar ply layout in the same direction as Radial manufactured casing plies. Having less plies, it becomes lighter and more flexible, yet resulting in the same resistance compared to patches of the same application.

CODE	DESCRIPTION	UNIT/BOX
RA-31	185 x 80mm	10
RA-33	225 x 100mm	10
RA-35	265 x 100mm	10
RA-37	300 x 100mm	10
RA-39	345 x 100mm	10



BIAS PLY TYRE PATCHES Passenger & Truck

To repair damages on Bias /cross ply tyres in the tread, shoulder or side wall area. Its manufacturing layout equals that of the casing plies of Bias ply tyres. Tyre ply rating is important for cross ply patch application.

CODE	DESCRIPTION	PLIES	UNIT/BOX
VD-01	60mm Round	1	30
VD-02	85mm Round	2	20
VD-03	105mm	2	10
VD-04	135mm	2	10
VD-05	165mm	4	10
VD-06	245mm	6	10
VD-07	300mm	6	10
VD-08	350mm	6	5
VD-09	395mm	8	5
VD-10	455mm	8	3



BIAS PLY TYRE PATCHES Farm Equipment

They are used to repair Bias ply tyres on damages in the tread area and shoulders. Their manufacturing lays out the same direction as the casing plies of farm equipment Bias ply tyres.

CODE	DESCRIPTION	PLIES	UNIT/BOX
MA100	270 x 200mm	4	10
MA101	310 x 230mm	4	10
MA102	370 x 275mm	4	5
MA103	420 x 315mm	6	5
MA104	535 x 390mm	6	5
MA105	610 x 450mm	6	5





Tyre repair application chart

Commercial Vehicles and Passenger Cars

2019

sales@tyreandretread.co.za

RAC PATCHES- Passenger Cars



Patch Type	Dimension	Typical Inds	C & R (mm)	MO (mm)	SH (mm)	SA	RS
1	445	13 x 11	12	12	12	12	12
	455	S-T	15 x 30	8	12	12	12
	465	20 x 35	8	20	14	14	14
2	478	H-V	5 x 8	7	8	10	10
	485	10 x 15	8	10	12	12	12
3	495	8 x 8	8	8	8	10	10
	505	7V	7	8	8	10	10

VF AND VFP REPAIRS - Commercial Vehicles and Passenger Cars



Application Area	Damage	VF/VFP
Shoulder	Shoulder	VF
Centre	Centre	VFP
Inner	Inner	VFP
Outer	Outer	VFP


VD AND VDL PATCHES - Commercial Vehicles and Passenger Cars



Damage Type	Typical Inds
Shoulder	VD
Centre	VDL
Inner	VDL
Outer	VDL

*For the same size of damage, there can be indicators of different sizes of RAC patches. The patches that have ending "7" are destined for damage controlled on the road. The others are for damage where the patch's edge is placed at the shoulder.

RAC, RA AND RS PATCHES - Commercial Vehicles



RAC, RA AND RS PATCHES - COMMERCIAL VEHICLES	RAC, RA AND RS PATCHES - COMMERCIAL VEHICLES	RAC, RA AND RS PATCHES - COMMERCIAL VEHICLES
LI max. 121	LI max. 122 - LI max. 158	LI max. 159 - LI max. 178
Radial type	Radial type	Radial type
600-730 75-838 163-205	825-1075 90-136 202-285 204-265	1400-1600 150-248 275-395
C & R (mm) RAC RA RS	C & R (mm) RAC RA RS	C & R (mm) RAC RA RS
8 x 8 14 10 x 10 20 21 10 x 30 40 31 10 x 50 40 31 10 x 60 27 27 20 x 50 22 22 20 x 60 22 22 20 x 80 22 22 20 x 90 22 22 20 x 120 22 22 20 x 150 22 22	8 x 8 24 8 x 10 20 21 8 x 30 24 21 10 x 30 32 22 10 x 50 32 22 10 x 70 32 22 10 x 110 40 31 10 x 160 40 31 12 x 30 27 27 12 x 60 24 24 12 x 75 27 27 15 x 30 27 27 15 x 50 27 27 15 x 70 27 27 15 x 85 27 27 15 x 110 27 27 15 x 135 27 27 20 x 50 27 27 20 x 60 27 27 20 x 80 27 27 20 x 90 27 27 20 x 100 27 27 20 x 120 27 27 20 x 150 27 27 20 x 170 27 27	18 x 25 27 27 18 x 30 27 27 18 x 40 27 27 18 x 50 30 30 18 x 60 30 30 18 x 70 30 30 18 x 80 30 30 18 x 90 30 30 18 x 100 30 30 18 x 110 30 30 18 x 120 30 30 18 x 130 30 30 18 x 140 30 30 18 x 150 30 30 18 x 160 30 30 18 x 170 30 30 18 x 180 30 30 18 x 190 30 30 18 x 200 30 30 18 x 210 30 30 18 x 220 30 30 18 x 230 30 30 18 x 240 30 30 18 x 250 30 30 18 x 260 30 30 18 x 270 30 30 18 x 280 30 30 18 x 290 30 30 18 x 300 30 30 18 x 310 30 30 18 x 320 30 30 18 x 330 30 30 18 x 340 30 30 18 x 350 30 30 18 x 360 30 30 18 x 370 30 30 18 x 380 30 30 18 x 390 30 30 18 x 400 30 30

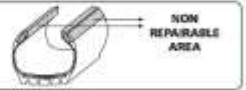
In order to guide the application of tyre repairs, Vipal rubber certifies that all materials for tyre repairing provided by the company follow the characteristics required by the Mexican NBR-NM252/200 norm, which regulate the retreading tyre process and are effective via INMETRO, the European Union regulations ECE R-108 (passenger cars' tyres), and ECE R-109 (cargo tyres). This declaration is valid as long as all technical orientations are followed. According to Vipal's Repair Handbooks and/or use instructions accompanying products. The permitted repair area must be respected, as well as the maximum damage limit, and the maximum amount of repairs per tyre. Patches should never be overlapped. When these conditions are respected, Vipal's Radial and Star Ply repairs support up to twice as much pressure than that established by the manufacturer. See the chart with the specifications of patch assembly per tyre.

DECLARATION FOR PATCH APPLICATION

Types of tyre categories	Maximum amount of patches allowed per tyre
Automobiles and light transport vehicles, based on "Load 1"	7
Automobiles and light transport vehicles, based on "Load 2"	5
Trucks, buses, coaches, and transport vehicles, based on "Load 1"	6
Trucks, buses, coaches, and transport vehicles, based on "Load 2"	4
Automobiles and light transport vehicles, based on "Load 1"	7
Automobiles and light transport vehicles, based on "Load 2"	5
Trucks, buses, coaches, and transport vehicles, based on "Load 1"	6
Trucks, buses, coaches, and transport vehicles, based on "Load 2"	4

ATTENTION!
These application charts are valid globally for Vipal repairs. The magnitude of the damages in the charts is the result of our experience. The applicator must always analyze whether the tyre's physical condition allows for repairing. Inspecting the usage is essential for checking for other non-repairable damages. Maximum limits of damage must be respected. Repairs with penetration over the max. indicated in this chart, which may be allowed for some countries, are not taken into consideration here. The responsibility over the repair's quality belongs to the user of the application, who judges and decides on whether the defect is irreparable, through measuring tread depth loss. The correct products of retreading and repairing must always be considered, as well as the tyre manufacturer's instructions of repair.

NOMENCLATURE
C - Circumference - Damage size measured in the direction of tyre rotation.
R - Radial - Damage size measured from bead to bead (Radial).
MO - Tread - Diameter of through the tyre penetration in the tread.
SH - Shoulder - Diameter of through the tyre penetration in tyre's shoulder.
*Through the tyre penetrations in the bead area of radial tyres in trucks and buses that reach the loading limit three times the rating ply with maximum over stress during the repair.



VULCANIZING CEMENTS

Vulcanizing cements have special resins that enhance adherence, and accelerators that guarantee vulcanization of the repair units through the chemical cure process.

CODE	PACKAGE	CONTENT	UNIT/BOX
BV-02	Tube	25ml / 18g	12
BV-03	Tube	45ml / 32g	6
CV-00	Can	225ml / 163g	each
CV-01	Can	500ml / 362g	each
CV-02	Can	1000ml / 725g	each



SOLVENTS

Chemical cleaner that removes greases and other contaminants from the repair area.

CODE	DESCRIPTION	UNIT/BOX
BUFPAL 250	Can 250ml	each
BUFPAL 1000	Can 1000ml	each
SOLV02	Aerosol Cleaner 500ml	each



SEALERS

Applied over the patch in tubeless tyres, preventing the tyre structure being affected with loss of air from buffed area.

CODE	DESCRIPTION	UNIT/BOX
SV-01E	Inner Liner Sealer 500ml / 400g	each





TUNGSTEN CARBIDE RASPS



CODE	DESCRIPTION	GRIT
TCR004	2204	16
TCR006	2206	16
TCR007	2207	36
TCR008	2208	16
TCR010	2210	16

CODE	DESCRIPTION	GRIT
TCW210-16	Cup Rasp 210/16	16
TCW210-36	Cup Rasp 210/36	36
TCW315/16	Cup Rasp 315/16	16
TCW315/36	Cup Rasp 315/36	36
TCW415/16	Cup Rasp 415/16	16
TCW415/36	Cup Rasp 415/36	36
TBR007	Ventilated Grinding Disc	7"
SLV001	Grinding Sleeve 3" x 2"	36

CODE	DESCRIPTION	GRIT
TCR011	Cone Rasp	16
TCR013	Cone Rasp	36
TCR017	Rod Rasp	36
TCR018	Rod Rasp	16



ABRASIVES



CODE	DESCRIPTION	UNIT/BOX
PSRA15	A15	each
PSRA24	A24	each
MSRA36	A36	each
MSRA37	A37	each

CARBIDE CUTTERS

CODE	DESCRIPTION	SIZE
CAR006	Carbide Cutter	6mm
CAR008	Carbide Cutter	8mm
CAR010	Carbide Cutter	10mm
CAR013	Carbide Cutter	13mm



GOUGERS

CODE	DESCRIPTION	SIZE
GOU001	Rotary Gouger	1"
GOU002	Rotary Gouger	2"



ENCAPSULATED WIRE BRUSHES

CODE	DESCRIPTION	SIZE
ENBR50	Encapsulated Wire Brush	50mm
ENBR75	Encapsulated Wire Brush	75mm



BLADES

CODE	DESCRIPTION	UNIT/BOX
BUFP6	P6 Rasps	6
TACRSP	OX2 Tack Rasp	each
BUF007	Buffing Blades	50 Sets
REG001	101 Re-grooving Blades	20
REG002	102 Re-grooving Blades	20
REG003	103 Re-grooving Blades	20
REG004	104 Re-grooving Blades	20



BUFP6



TACRSP



MOTORCYCLE VALVES



CODE	DESCRIPTION	UNIT/BOX
TV412	TR412 Tubeless Motorcycle Valve	100
TVPUR70	PUR70 Motorcycle Valve	each
TVM0001	Aluminium Motorcycle Valve	each

PASSENGER / LDV



CODE	DESCRIPTION	UNIT/BOX
TV413	TR413 Tubeless valve	100
TV414	TR414 Tubeless Valve	100
TV415	TR415 Tubeless Valve	100
TV418	TR418 Tubeless Valve	100
TVT3000	T3000 Clamp-in Valve	each

COLD CURE RE-VALVES Passenger / Truck / Agri



CODE	DESCRIPTION	UNIT/BOX
FERRULE	Plastic Ferrule	each
TVC13	TR13 Cold Cure Re-Valve	each
TVC15	TR15 Cold Cure Re-Valve	each
TVC150	TR150 Cold Cure Re-Valve	each
TVC75	TR75 Cold Cure Re-Valve	each
TVC78	TR78 Cold Cure Re-Valve	each
TVC218	TR218 Cold Cure Re-Valve	each
RIMNUT	Rim Nut For TR218	each

TRUCK VALVES

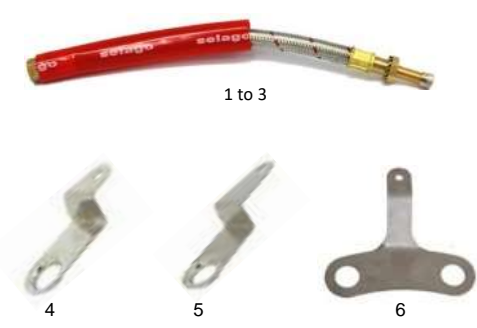
CODE	DESCRIPTION	ITEM #	UNIT/BOX
TV34560	34560 Tubeless Truck Valve	1	each
TV34562	34562 Tubeless Truck Valve	2	each
TV34643	34643 Tubeless Truck Valve	3	each
TVVOLVO	Volvo Tubeless Truck Valve	4	each
TVALCOA	Alcoa Tubeless Truck Valve	5	each
TV543C	543C Tubeless Truck Valve	6	each
TV500	TR500 Tubeless Truck Clamp-In Valve	7	each
TV501	TR501 Tubeless Truck Clamp-In Valve	8	each
TV572	TR572 Tubeless Truck Clamp-In Valve	9	each
TVSSINGLE	Super Single Valve	10	each



FLEX VALVE EXTENSIONS

Truck

CODE	DESCRIPTION	ITEM #	UNIT/BOX
FLEX125	125mm Flex Extension - Shrader	1	each
FLEX175	175mm Flex Extension - Shrader	2	each
FLEX250	250mm Flex Extension - Shrader	3	each
FB662/3	662/3 Flex Extension Bracket	4	each
FB662/2	662/2 Flex Extension Bracket	5	each
FBVOLVO	Volvo Flex Extension Bracket	6	each



AIR LIQUID VALVES

Agri

CODE	DESCRIPTION	ITEM #	UNIT/BOX
TVCH3	CH3 Core Housing	1	each
TV618A	TR618A Air Liquid Valve	2	each
TV623A	TR623A Air Liquid Valve	3	each
TV621A	TR621A Air Liquid Valve	4	each
TV622A	TR622A Air Liquid Valve	5	each
TVWATER	Air Liquid Adapter	6	each



TRUCK VALVES Large Bore



CODE	DESCRIPTION	ITEM #	UNIT/BOX
TVSP2	SP2 Clamp-in Spud LB	1	each
TVJ670	J670 Large Bore Core Housing	2	each
TVJ650	J650 Large Bore Swivel Valve	3	each
TV5020-17	5020-17 Large Bore Swivel Valve	4	each
TV0570VC	WHG-5070VC Large Bore Ext 5 Bend		each
TV1450VC	WHG-1450VC Large Bore Ext 5 Bend	5	each
TV4985VC	WHG-4985VC Large Bore Ext 4 Bend		each
TV5200VC	WHG-5200VC Large Bore Ext 5 Bend		each
TV5410VC	WHG-5410VC Large Bore Ext 5 Bend	6	each
TV5420VC	WHG-5420VC Large Bore Ext 5 Bend		each
TV8018VC	WHG-8018VC Large Bore Ext 4 Bend	7	each
TV8019VC	WHG-8019VC Large Bore Ext 1 Bend	8	each
TV9440VC	WHG-9440VC Large Bore Ext 5 Bend		each
TV9470VC	WHG-9470VC Large Bore Ext 5 Bend		each
TV5112VC	WHG-5112VC Large Bore Ext 4 Bend		each
TV8852VC	WHG-8852VC Large Bore Ext 4 Bend		each
TV5922EC	WHD-5922VC Large Bore Ext 5 Bend		each
TV7940EC	WHD-7940EC Large Bore Ext 5 Bend		each
TV7949EC	WHD-7949EC Large Bore Ext 4 Bend		each
			each
			each
			each
			each
			each
			each
			each
			each
			each
			each
			each
TV7601EC	WHD-7601EC Large Bore Ext 4 Bend		each
TV7602EC	WHD-7602EC Large Bore Ext 4 Bend		each

TRUCK VALVES Super Large Bore

CODE	DESCRIPTION	ITEM #	UNIT/BOX
TVT81	T-81 Super Large Bore Spud – Clamp-in	1	each
TVT82	T-82 Super Large Bore Spud – Clamp-in	2	each
TVC100	C-100 Super Large Bore Spud – Screw-in	3	each
TVS85	S-85 S.L.B. Swivel Connector 85° Screw-in	4	each
TVS85D	S-85D S.L.B. Swivel Conn. 85° Screw-in	5	each
TVR525	R-525 Super Large Bore Swivel Connector	6	each
TVR685	R-685 S.L.B. Swivel Connector 85°		each
TVR625	R-625 S.L.B. Swivel Connector 80°		each
TVR675	R-675 S.L.B. Swivel Connector 75°	7	each
TVR660	R-660 S.L.B. Swivel Connector 60°		each
TVR529	R-529 S.L.B. Swivel Connector 90°		each
TVR520	R-520 Super Large Bore Core Housing	8	each
TVMR800	MR-800 Super Large Bore Swivel Valve	9	each
TVMR850	MR-850 Super Large Bore Swivel Valve		each
TVR969K1	R-969K-1 S.L.B. Assembly Kit	10	each
TVR760	R-760-100 Extension Tubing	11	each
TVT620	T-620 S.L.B. Assembly Tool	12	each
TVIN80A	IN-80A S.L.B. Inflater Adapter	13	each



TRUCK VALVES Z-Bore

CODE	DESCRIPTION	ITEM #	UNIT/BOX
TVZ2	Z2 Z-Bore Clamp-in Spud	1	each
TVZ1	Z1 Z-Bore Screw-in Spud	2	each
TVZ4	Z4 Z-Bore Screw-in Angle Connector	3	each
TVZ390	Z3-90 Z-Bore Angle Connector 90°	4	each
TVZ10	Z10 Z-Bore Core Housing	5	each
TVZFAK	ZFAK Assembly Kit For Z-Bore Valves	6	each
TVZ100	Z100-100 Extension Tubing	7	each
TVZ5	Z5 Z-Bore Assembly Tool	8	each
TVZ12B	Z12B Z-Bore Inflater Adapter	9	each



TRUCK VALVES Mega Bore



CODE	DESCRIPTION	ITEM #	UNIT/BOX
TVMB20	MB-20 Mega Bore Clamp-in Spud	1	each
TVMB26	MB-26 Mega Bore Screw-in Spud	2	each
TVMB1275	MB-12-75 Mega Bore Screw-in Angle Spud	3	each
TVMB1975	MB-19-75 Mega Bore Angle Connector	4	each
TVMB14	MB-14 Rigid Mega Bore Valve	5	each
TVMB27	MB-27 Rigid Mega Bore Valve	6	each
TVIN95	IN-95 Mega Bore Inflator Adapter	7	each

VALVE CORES, CAPS & ADAPTERS



CODE	DESCRIPTION	ITEM #	UNIT/BOX
TVCAP1	Dome Valve Cap Std Bore	1	each
TVCAP2	Hex Valve Cap Std Bore	2	each
TVCAP3	Black Plastic Valve Cap Std Bore	3	each
TVCAP4	Green Plastic Valve Cap Std Bore	4	each
TVCAP5	VC-6 Large Bore Valve Cap With Key	5	each
TVCAP6	VC-7 Large Bore Hex Cap	6	each
TVCORE1	Passenger Valve Core Short	7	each
TVCORE2	Jumbo Valve Core Short	8	each
TVAD1	AD-1 Large Bore Adapter Male	9	each
TVAD2	AD-2 Large Bore Adapter Female	10	each

COUPLERS & FITTINGS ARO Range



CODE	DESCRIPTION	ITEM #	UNIT/BOX
AROCOUP	Aro Coupler 1/4" Female	1	each
AROMALE	Aro Plug-in Adapter Male	2	each
AROFEMALE	Aro Plug-in Adapter Female	3	each
AROHOSE	Aro Hose Barb Adapter	4	each

COUPLERS & FITTINGS TRU-FLATE Range



CODE	DESCRIPTION	ITEM #	UNIT/BOX
TFCMALE	Tru-Flate Coupler 1/4" Male	1	each
TFCFEMALE	Tru-Flate Coupler 1/4" Female	2	each
TFEMALE	Tru-Flate Plug-in Adapter Male	3	each
TFAFEMALE	Tru-Flate Plug-in Adapter Female	4	each
TFASHORT	Tru-Flate Plug-in Adapter Female Short Sleeve	5	each
TFHOSE	Tru-Flate Hose Barb Adapter	6	each



AIRLINE HOSE & ACCESSORIES

CODE	DESCRIPTION	UNIT/BOX
TAIL6	6mm Tail piece	each
TAIL8	8mm Tail piece	each
HC6	6mm Hose Clamp	each
HC8	8mm Hose Clamp	each
HOSE6	6mm Airline Hose	Per meter
HOSE8	8mm Airline Hose	Per meter
HOSE13	13mm Airline Hose	Per meter



INFLATION GAUGES



1

CODE	DESCRIPTION	ITEM #	UNIT/BOX
INFMK4	PCL MK4 Inflation gauge	1	each
INF3655DF	3655DF Shrader inflater gauge	2	each
INF39002	39002DF Shrader Master Inflation Gauge	3	each
INFI409	I-409 Haltec Large Bore Inflater Gauge	4	each
INFI404	I-404 Haltec Inflater Gauge Std & LB	5	each
INFI402	I-402 Haltec Safety Inflater	6	each



2



3



4



5



6

PRESSURE GAUGES



1



2



3

CODE	DESCRIPTION	ITEM #	UNIT/BOX
GAU4X4	Shrader Dial Gauge 4X4	1	each
GAU6296BTF	Shrader 6296BTF Dial Gauge	2	each
GAU6296BTR	Shrader 6296BTR Dial Gauge	3	each
GAU6296RJF	Shrader 6296RJF LB Flex Dial Gauge	4	each
GAU6296RJR	Shrader 6296RJR LB Rigid Dial Gauge	5	each
GAU6299G	Shrader 6299G Air Liquid Dial Gauge	6	each



4



5



6

TYRE LEVERS

CODE	DESCRIPTION	ITEM #	UNIT/BOX
TLT45A	T45A Kentool T/Less Tyre Lever	1	each
TLT48A	T48A Kentool Lock Ring Tool	2	each
TLT23A	T23A Kentool Lock Ring Tool	3	each
TLT41	T41 Kentool Swan Neck	4	each
TL38/500	38/500 Gedore Tyre Lever	5	each
TL39	Gedore 39 Tyre Lever	6	each
MOUNTKIT1	Gaither Bead Saver System	7	each



WHEEL SPANNERS & MALLETS

CODE	DESCRIPTION	UNIT/BOX
MALLET35	T35 Kentool Mallet	each
MALL800	800g Rubber Mallet	each
TLGEDPASS	Gedore Passenger 4-Way Tyre Lever	each
TLPASS4WAY	4-Way Passenger Wheel Spanner / Mag	each
WRENCH	Combination Nut Wrenches	each
TBAR	Sliding T-Bar 1/2", 3/4" & 1"	each
SOCKET	Impact Sockets 1/2", 3/4" & 1"	each
EXTENSION	Impact Socket Extensions	each

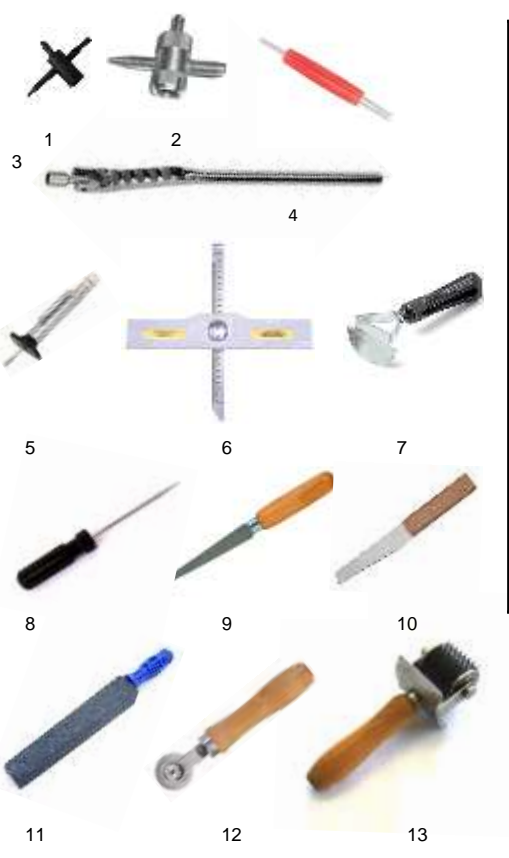


AIR TOOLS



CODE	DESCRIPTION	ITEM #	UNIT/BOX
CP871	CP871 High Speed Grinder	1	each
CP873	CP873 Low Speed Grinder	2	each
CP734H	CP734H Impact Wrench 1/2"	3	each
CP797-6	CP797-6 Impact Wrench 1"	4	each
EXT001	Extruder Gun	5	each
BUFFER	Flexible Shaft Buffer	6	each
STPLGN	Staple Gun	7	each

HAND TOOLS



CODE	DESCRIPTION	ITEM #	UNIT/BOX
VTSTD	Black Valve Tool 4-Way Std.	1	each
VTLB	Large Bore 4-Way Valve Tool	2	each
VTCOMBO	Combination Valve Tool Std & LB	3	each
VPULL001	Valve Puller	4	each
TREAD001	Tread Depth Gauge – Pencil Type	5	each
TREAD003	Earthmover Tread Depth Gauge	6	each
ILS001	Inner Liner Scraper	7	each
PRAWL3	Pricking Awl	8	each
TPK001	Taper Point Knife	9	each
SMK001	Shoe Makers Knife	10	each
SSH001	Sharpening Stone With Handle	11	each
STT001	Ball Bearing Stitcher	12	each
STT004	Porcupine Stitcher	13	each

WHEEL WEIGHTS STANDARD

CODE	DESCRIPTION	UNIT/BOX
STD5	5gm Standard wheel weight.	PER BOX
STD10	10gm Standard Wheel Weight	PER BOX
STD15	15gm Standard Wheel Weight	PER BOX
STD20	20gm Standard Wheel Weight	PER BOX
STD25	25gm Standard Wheel Weight	PER BOX
STD30	30gm Standard Wheel Weight	PER BOX
STD35	35gm Standard Wheel Weight	PER BOX
STD40	40gm Standard Wheel Weight	PER BOX
STD45	45gm Standard Wheel Weight	PER BOX
STD50	50gm Standard Wheel Weight	PER BOX



WHEEL WEIGHTS MAG

CODE	DESCRIPTION	UNIT/BOX
MAG5	5gm MAG wheel weight.	PER BOX
MAG10	10gm MAG Wheel Weight	PER BOX
MAG15	15gm MAG Wheel Weight	PER BOX
MAG20	20gm MAG Wheel Weight	PER BOX
MAG25	25gm MAG Wheel Weight	PER BOX
MAG30	30gm MAG Wheel Weight	PER BOX
MAG35	35gm MAG Wheel Weight	PER BOX
MAG40	40gm MAG Wheel Weight	PER BOX
MAG45	45gm MAG Wheel Weight	PER BOX
MAG50	50gm MAG Wheel Weight	PER BOX



STICK-ONS

CODE	DESCRIPTION	UNIT/BOX
SSSTEEL	Steel Stick-on Weights - Slimline	PER BOX
SONSTD	Standard Stick-on	PER BOX
SOJUMBO	Jumbo Stick-on	PER BOX



WICKING

Used to promote air drainage from envelopes and increase vacuum system efficiency.



CODE	DESCRIPTION	UNIT/BOX
M208	Cloth Wicking Hi Temp	24/Roll
RWP-01	Rubber Wicking	5

POLYPROPYLENE

Special film used in the cold cure method – enhances air evacuation and protects the envelopes internally, allowing a good side finish.



CODE	DESCRIPTION	UNIT/BOX
POL-355	355mm Perforated	P/Kg
POL-410	410mm Perforated	P/Kg
POL-460	460mm Perforated	P/Kg

ADAPTERS



CODE	DESCRIPTION	ITEM #	UNIT/BOX
EV2008	Envelope Spud	1	each
BEN001	Envelope Nipple Bandag Male	2	each
IOEA01	Envelope Nipple Inner/Outer (Vacuum)	3	each
B3C	Curing Tube Nipple (B13) 1/4"	4	each
H6C	Curing Tube Nipple (b13) Small	5	each
BEC001	Coupler Bandag Type (BEN001)	6	each
ACTB13	Coupler B13 (B3C & H6C)	7	each
IOEC01	Coupler Inner/Outer (IOEA01)	8	each
ADA001	Quick Change Adapter Short	9	each
ADA002	Quick Change Adapter Long	10	each

ENVELOPES / INNERLOPES

CODE	SYSTEM	TYRE SIZES	UNIT/BOX
ENL-16	ARC	750x16 / 825/16	2
ENL-195	ARC	245/268/285/70R19.5	2
ENL-315	ARC	12R22.5/315/80R22.5	2
ENL-385	ARC	385/65R22.5/425/65R22.5	2
ENS-16	Rim/Inner-Outer	750x16/245/70R17.5	2
ENS-210	Rim/Inner-Outer	900/1000x20	2
ENS-211	Rim/Inner-Outer	1100/1200x20	2
ENS-315	Rim/Inner-Outer	12R22.5/315/80R22.5	2
IN-225	INNERLOPE	12R22.5/315/80R22.5	2



CURING TUBES / CURING FLAPS

CODE	TYRE SIZE / DESCRIPTION	UNIT/BOX
CT-16	750x16	2
CT-209	900x20 / 1000x20	3
CT-210	100x20 / 1200x20	3
CT-22	12R22.5 / 315/80R22.5	3
FLAP16	16" Heavy Duty Curing Flap	4
FLAP20	20" Heavy Duty Curing Flap	4
FLAP22	22" Heavy Duty Curing Flap	4



ARC RINGS & ARC BANDS

CODE	DESCRIPTION	UNIT/BOX
XR-175/SR-175	17.5" Metal Arc Ring set / 17.5" Rubber seal set	2
XR-195/SR-195	19.5" Metal Arc Ring set / 19.5" Rubber seal set	2
XR-225/SR-225	22.5" Metal Arc Ring set / 22.5" Rubber seal set	2



BOTTLE JACKS



CODE	SYSTEM	UNIT/BOX
WINB06	Winntec Hydraulic Bottle Jack 6 Ton	each
WINB12	Winntec Hydraulic Bottle Jack 12 Ton	each
WINB20	Winntec Hydraulic Bottle Jack 20 Ton	each
WINB30	Winntec Hydraulic Bottle Jack 30 Ton Industrial	each
WINB50	Winntec Hydraulic Bottle Jack 50 Ton Industrial	each

TROLLEY JACKS



CODE	SYSTEM	ITEM #	UNIT/BOX
WINT2LOW	Winntec Hydraulic Trolley Jack 2 Ton / Low Profile	1	each
WINT2LONG	Winntec Hydraulic Trolley Jack 2 Ton / Long Reach	2	each
WINT5LONG	Winntec Hydraulic Trolley Jack 5 Ton / Long Reach	3	each
WINT12LONG	Winntec Hydraulic Trolley Jack 12 Ton / Long Reach	4	each
WINAH20	Winntec Air/Hydraulic Trolley Jack 20 Ton With Adaptors	5	each
WINAH15-30	Winntec Air/Hydraulic Trolley Jack 15/30 Ton -Two Stage	6	each

TRESTLES



CODE	SYSTEM	UNIT/BOX
WINTRES3	Winntec Trestle 3 Ton / Ratchet Type	Pair
WINTRES6	Winntec Trestle 6 Ton / Ratchet Type	Pair
WINTRES12	Winntec Trestle 12 Ton / Ratchet Type	Pair

LUBRICANTS

CODE	TYRE SIZE / DESCRIPTION	UNIT/BOX
ENVLUB	Envelope Lube- TEFLON BASED	5L
Q20LUB	Multi Purpose Lubricant	16
SOS001	Soft Soap	20Kg
LUB001	Bead Lube	25L
MPASTE	Mounting Paste	10kg
V-PAINT	Vipal Tyre Paint	18L



VULCANIZING EQUIPMENT

Vulcanizing equipment to be used for "HOT" repairs consisting of a control panel and an assortment of Heat Pads and Air Bags as per requirement.



TYRE BEAD BREAKERS



Manual



1,2&3 PCE



5 PCE



Pumps

EM O-RINGS

O-rings are specifically designed to create a seal on the tyre beads of Grader, earthmover and OTR machines.



CODE	DESCRIPTION	UNIT/BOX
OR220T	O-ring 220T	each
OR224T	O-ring 224T	each
OR225T	O-ring 225T	each
OR325T	O-ring 325T	each
OR329T	O-ring 329T	each
OR333T	O-ring 333T	each
OR335T	O-ring 335T	each
OR339T	O-ring 339T	each
OR345T	O-ring 345T	each
OR349T	O-ring 349T	each
OR451T	O-ring 451T	each
HOR457	O-ring 457-T-1	each

SAFETY / PPE



1 2 3



4 5



6 7



8 9 10



11

CODE	SYSTEM	ITEM #	UNIT/BOX
GLONIT	Gloves Nitrile	1	pair
GLOCAN	Gloves Candy Stripe	2	pair
GLOPIG	Gloves Pig Skin	3	pair
GLOGRE2	Gloves Green 2"	4	pair
GLOGRE8	Gloves Green 8"	5	pair
DUST20	Dust masks / 20	6	20
SAFE024	Respirator	7	each
SAFE225	Safety Glasses Clear Anti Fog	8	each
SAFE013	Safety Goggles	9	each
SAFE003	Ear Muffs	10	each
SAFE085	Ear Plugs Disposable	11	each



BUREAU VERITAS

Bureau Veritas Certification

BORRACHAS VIPAL S/A.

Avenida Imperatriz Leopoldina, 578, Distrito Industrial - 95320 000 - Nova Prata/RS - Brasil

This is a multi-site certificate, additional site(s) are listed on the next page(s)

Bureau Veritas Certification Holding SAS - UK Branch certifies that the Management System of the above organisation has been audited and found to be in accordance with the requirements of the management system standards detailed below

ISO 9001:2015

Scope of certification

DESIGN, DEVELOPMENT, MANUFACTURING AND SALES OF PRECURED TREADS, CAMELBACK, RUBBER ACCESSORIES FOR TYRE RETREADING, TYRE AND INNER TUBE REPAIRS, ADHESIVES, UNVULCANISED RUBBER COMPOUNDS, CURING TUBES AND ENVELOPES, RUBBER COATED NYLON PLY AND MOTORCYCLE TYRES. STORAGE AND PURCHASING OF RAW MATERIAL FOR RUBBER MANUFACTURING.

Original Cycle Start Date:	05-12-2007
Expiry date of previous cycle:	14-10-2022
Certification / Recertification Audit date:	05-09-2022
Certification / Recertification cycle start date:	13-09-2022

Subject to the continued satisfactory operation of the organization's Management System, this certificate expires on: 13-10-2025

Certificate No.: BR038597 Rev: 3 Issue Date: 13-09-2022



0008

Certification Body Address: 5th Floor, 66 Prescott Street, London, E1 8HG, United Kingdom

Local office: Av. Alfredo Egidio de Souza Aranha, 100, Torre C, 4º Andar Vila Cruzeiro, 04726-170 - São Paulo/SP - Brazil

Further clarifications regarding the scope and validity of this certificate, and the applicability of the management system requirements, please call: +551126559001.

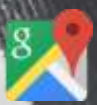




+27 10 013 0083



sales@tyreandretread.co.za



Unit 7, Meadowbrook Business Park
110 North Reef Road
Bedfordview
2007

