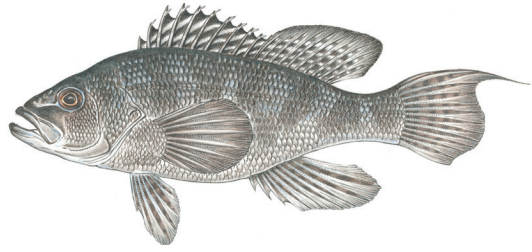




Commonwealth of Massachusetts
Division of Marine Fisheries
 (617) 626-1520; www.mass.gov/marinefisheries
Size & Bag Limits for Saltwater Fish in MA Waters
 2023

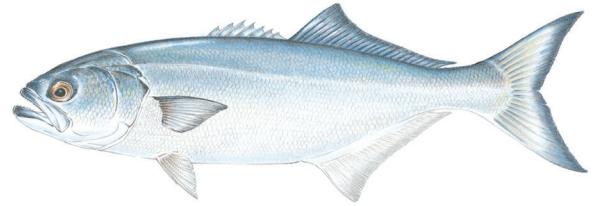


BLACK SEA BASS



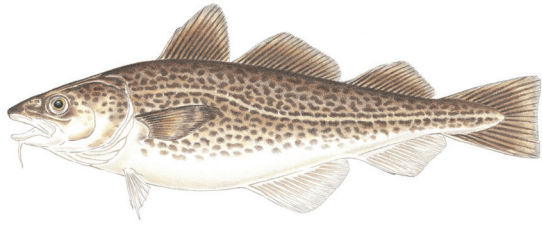
Open Season: May 20 - Sep 7
 Minimum Size: 16.5"
 Possession Limit: 4 fish

BLUEFISH



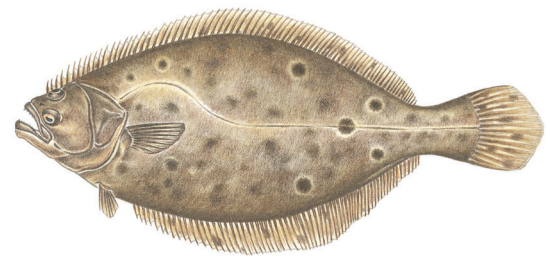
Open Season: Year Round
 Minimum Size: No Limit
 Possession Limit: 3 fish

ATLANTIC COD*



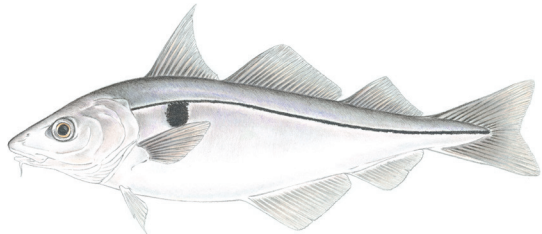
<u>North of Cape Cod</u>	<u>South of Cape Cod</u>
Open Season: Apr 1 - Apr 14; Sep 1 - Oct 7	Aug 1 - Apr 30
Minimum Size: 22" min	22" min to 28" max
Possession Limit: 1 fish	5 fish

FLUKE (SUMMER FLOUNDER)



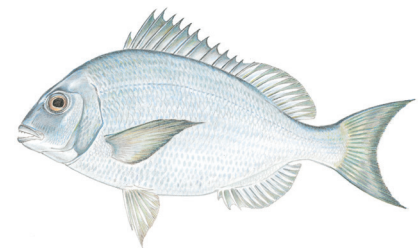
Open Season: May 21 - Sept 29
 Minimum Size: 16.5"
 Possession Limit: 5 fish

HADDOCK*



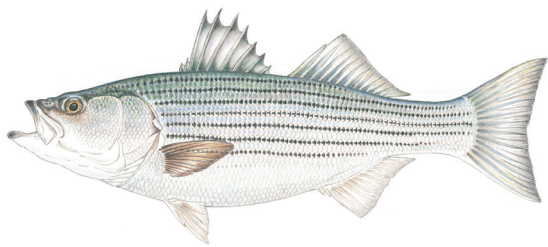
<u>North of Cape Cod</u>	<u>South of Cape Cod</u>
Open Season: Jan 1 - Feb 28 ; Apr 1 - Dec 31	Year Round
Minimum Size: 17"	18"
Possession Limit: 20 fish	No Limit

SCUP



Open Season: May 1 - December 31
 Minimum Size: 9.5" from shore; 10.5" from vessel.
 Possession Limit: 30 fish per angler.
During the open season, aggregate vessel limit may not exceed 150 fish.

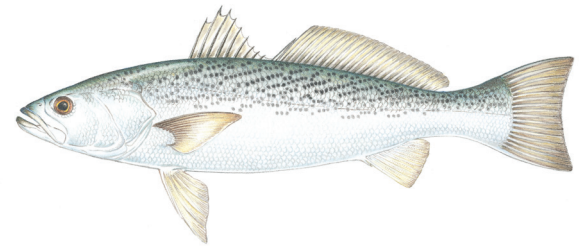
STRIPED BASS



Open Season: Year Round
 Size Limit: 28" to less than 31"
 Possession Limit: 1 fish

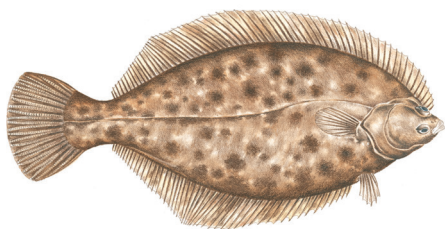
Gaffing prohibited. Use of in-line circle hooks is mandatory when fishing with whole or cut natural baits, except with artificial lures.

WEAKFISH



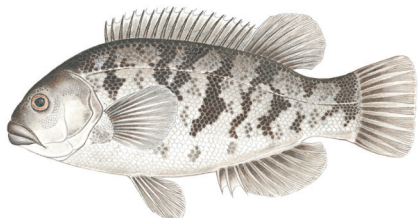
Open Season: Year Round
 Minimum Size: 16"
 Possession Limit: 1 fish

WINTER FLOUNDER



<u>North of Cape Cod</u>	<u>South of Cape Cod</u>
Open Season: Year Round	Mar 1 - Dec 31
Minimum Size: 12"	12"
Possession Limit: 8 fish	2 fish

TAUTOG



Open Season: April 1 - May 31	Jun 1 - Jul 31	Aug 1 - Oct 14	Oct 15 - Dec 31
Size Limit: 16" - 21"	16" - 21"	16" - 21"	16" - 21"
Possession Limit: 3 fish	1 fish	3 fish	5 fish

During the open season, 1-fish per person per day may exceed 21" & the aggregate vessel limit may not to exceed 10-fish.

* Regulations for cod north and south of Cape Cod and haddock north of Cape Cod are subject to change pending final rule-making by NOAA Fisheries. Please visit our website (www.mass.gov/marinefisheries) to get the most up-to-date recreational fishing limits.