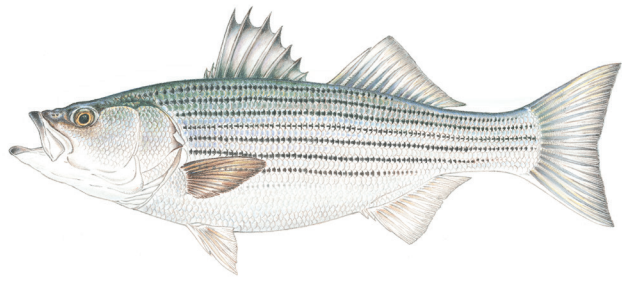


for saltwater fish in Massachusetts waters

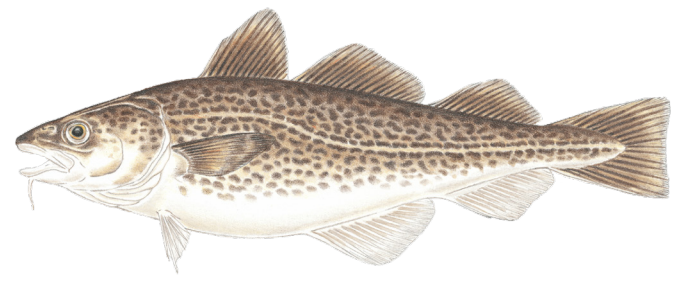
Recreational regulations for popular saltwater species by:
Open season / Minimum size / Possession limit



Striped Bass

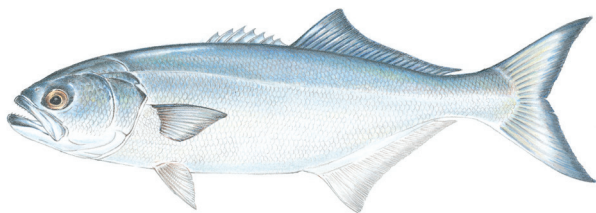
Year round / 28" to less than 31" / 1 fish

Gaffing prohibited. Use of in-line circle hooks is mandatory when fishing with whole or cut natural baits, except with artificial lures. Except if being prepared for immediate consumption, fish must be kept whole while at sea or on any adjacent parcel of land; evisceration, scaling, and gutting are allowed.



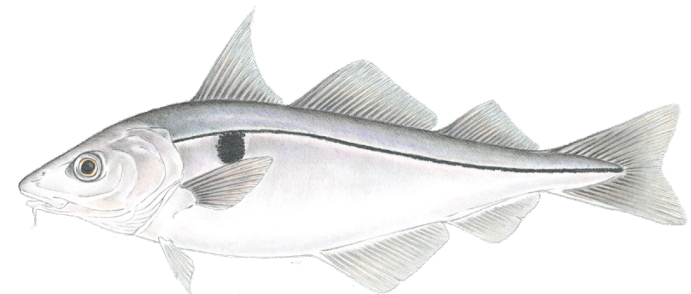
Atlantic Cod

See mass.gov/saltwater-regulations for current recreational regulations



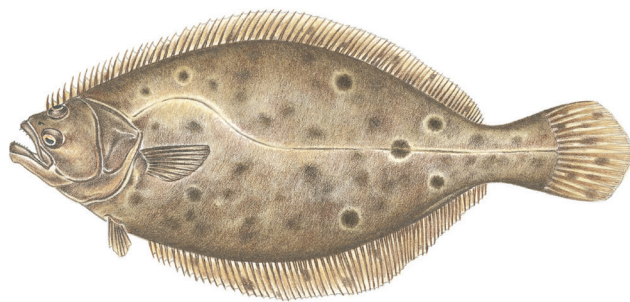
Bluefish

Year round / No minimum size limit / 3 fish



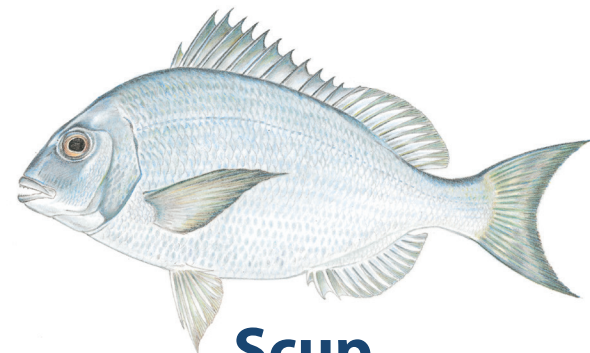
Haddock

See mass.gov/saltwater-regulations for current recreational regulations



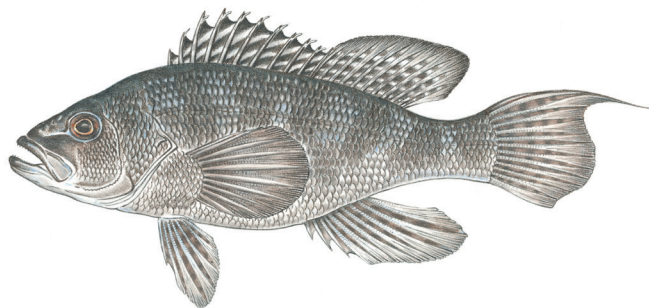
Fluke (Summer Flounder)

May 24 - Sep 23 / 16.5" (shore); 17.5" (vessel) / 5 fish



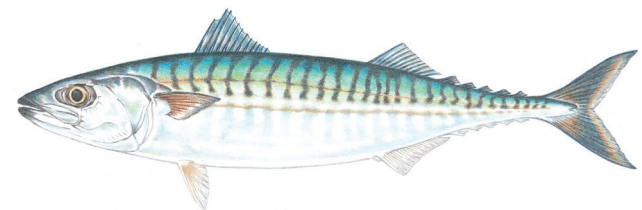
Scup

May 1 - Dec 31 / 9.5" (shore); 11" (vessel) / 30 fish
During the open season, aggregate vessel limit may not exceed 150 fish.



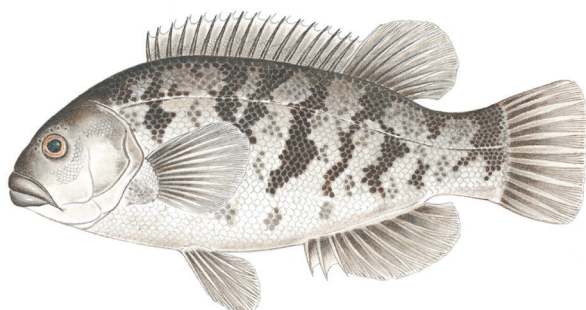
Black Sea Bass

May 18 - Sep 3 / 16.5" / 4 fish



Atlantic Mackerel

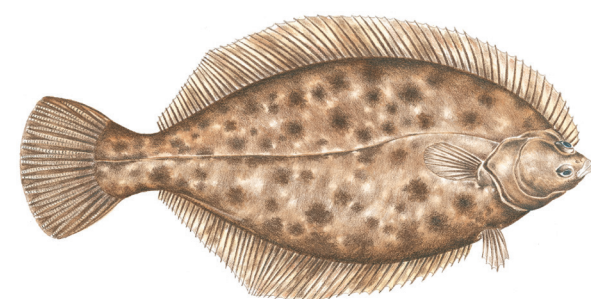
Year round / No minimum size limit / 20 fish
Possession limit applies as daily angler harvest limit or per angler possession limit while fishing.



Tautog

April 1 - May 31 / 16" - 21" / 3 fish
 Jun 1 - Jul 31 / 16" - 21" / 1 fish
 Aug 1 - Oct 14 / 16" - 21" / 3 fish
 Oct 15 - Dec 31 / 16" - 21" / 5 fish

During the open season, 1 fish per person per day may exceed 21" and the aggregate vessel limit may not exceed 10 fish.



Winter Flounder

North of Cape Cod: Year round / 12" / 8 fish
 South of Cape Cod: Mar 1 - Dec 31 / 12" / 2 fish



Commonwealth of Massachusetts
 Division of Marine Fisheries
mass.gov/MarineFisheries

Posters are valid as of May 1, 2024, and do not include all species or rules. For more information, please visit our website:
mass.gov/saltwater-regulations

