



since 1995.

It is an independent company Yorkshire is based in Skipton, the 'gateway to the Dales. Our Company name is

Yorkshire Trade Link. We do the dealings with the antiques & super antiques items. We have coordinators, experts & scientists who are the informer and inspector of the articles; we do the deal both nationally & internationally. Our head Office is in England and in India it is in Chennai & Kolkata.

Contact No- + 918515011491



CHAIRMAN MR. MICHEL COMBES

YORKSHIRE IS A COMPANY REGISTERED IN ENGLAND AND WALES, REGISTRATION NUMBER 03099879, WITH REGISTERED OFFICE BOWERS WHARF, SKIPTON, BD23 2PD.

YORKSHIRE CHAIRMAN MR. MICHEL COMBES AUTHORISED BY MR. SUDIPTO SEN IN INDIA.

Our projects:

1. YORKSHIRE TEA
2. YORKSHIRE GAS & POWER
3. YORKSHIRE GAS & SOLARS PECIALIST
4. YORKSHIRE EAMNEL, HALLMARKED GOLD & SILVER, ADGES & PRODUCTS
5. YORKSHIRE COLLIERIES
6. YORKSHIRE MIENS
7. YORKSHIRE BANK
8. YORKSHIRE ROAD CONSTRUCTION
9. YORKSHIRE BRIGDEC OSTN CONSTRUCTION
10. YORKSHIRE NUTRITION
11. YORKSHIRE SHIPPING
12. YORKSHIRE STEEL
13. YORKSHIRE PETROLEMU
14. YORKSHIRE BUILDING CONSTRUCTIONS
15. CELEBRATING AWARDS 2014

YORKSHIRE TEA

What is tea?

"As proud as we are of our tea, we're first to admit that Yorkshire Tea has only been around for just a fraction of the time people have been enjoying tea."



The history of tea

As proud as we are of our tea, we're first to admit that Yorkshire Tea has only been around for just a fraction of the time people have been enjoying tea. Legend has it that 5000 years ago, leaves blew into water being boiled for Chinese emperor Shen Nung who tried it and felt immediately relaxed.

It took thousands of years for tea to spread to Europe. Only in 1662, when the new wife of King Charles II, Princess Catherine of Braganza, brought her tea-drinking habit over from Portugal, did its popularity then spread across the UK. High taxes made tea too expensive for the working classes so smuggling was rife until William Pitt the Younger cut tax from 119% (!) to 12.5% and smuggling stopped.

We join the story in 1886, when Charles Edward Taylor noticed that different regions had different water, and that this affected the taste of their tea. He began creating bespoke blends for each region, using top quality teas from around the world. We still do this today, producing slightly different blends of Yorkshire Tea to suit the water it will be made with. We even make a Hard Water blend so people who live in areas with really hard water, like York or London, can still enjoy a proper brew.

"Between leaf and cup, each tea will be tasted by our blenders up to eight times to make sure everything has been done properly each step of the way."



From bush to cup

All tea comes from one type of bush, called *Camellia Sinensis*, and its journey is quite something. The tea we're interested in is mainly grown in the best tea gardens of Assam, East Africa and Sri Lanka. Soil, climate, and rainfall all affect the quality. So does the way its picked. Yorkshire Gold, for example, uses only the best quality first two leaves and a bud picked from each plant.

Once picked, tea leaves are 'withered' by spreading them out in troughs to remove moisture. They are then cut and rolled then left to 'ferment' by being exposed to the air. As oxygen circulates around the leaves, they turn from green to brown. The tea then turns black when fired in hot ovens, which stops oxidization by 'sealing' the leaves. It's then sorted by size, graded and packed, ready to be shipped all the way back to Yorkshire.

We buy teas from different origins in different seasons, each with different characteristics. So our experts taste all the teas we buy before deciding exactly how much of each tea will go into our blends. We then gently mix up to twenty different teas to create the perfect taste and colour of Yorkshire Tea. A special blending drum is used that turns only twelve times as tea is delicate and leaves can bruise easily. We then whisk them off to be bagged and packed, then wrapped to seal the freshness in.

Between leaf and cup, each tea will be tasted by our blenders up to eight times to make sure everything has been done properly each step of the way. That's something to think about next time you're waiting for your kettle to boil!



Yorkshire Tea:



Our tea buyers taste up to 1,100 different teas per day in peak season, so they know when they taste a tea that is truly exceptional. To make Yorkshire Gold, our luxury blend, they are constantly tasting and chasing quality. Once they've identified the teas from up to the ten of the best tea estates in the world they expertly combine them to make our very best tasting cup of tea.

So what goes into Yorkshire Gold? Why is the taste so very special? Well, the leaves that go into Yorkshire Gold are mainly grown in three of the best tea producing areas in the world: Kenya in East Africa, Rwanda in Central Eastern Africa and Assam in North Eastern India.

Each particular tea has its own very distinct characteristics that, when blended together, create the really rounded brew that is unique to Yorkshire Gold. One thing all three teas have in common is that they are grown near the equator in perfect conditions.

Tea grows in 'flushes'. These are when nutrients and enzymes are at their optimum levels that give tea bushes a spurt of leaf growth. For Assam the second flush produces the best and most prized leaves that give Yorkshire Gold its 'guttty' strength and wonderfully malty notes.

Now Kenyan tea has a very different flavour. It brings smoothness and balance to Yorkshire Gold. It's a high-grown tea that represents Kenyan tea at its absolute peak and a real favourite of our tea buyers.

The third origin of tea is Rwanda and we really do take the pick of the crop for our Yorkshire Gold blend. This is another high grown tea grown in rich volcanic soils. The taste is sensational – its wonderfully bright, golden brisk and refreshing – "it's like turning the lights on in your cup" according to one of our tea buyers.

Expertly blended, teas from these three illustrious origins combine to create a luxurious, full-bodied tea with a wonderfully rich flavour with a truly golden brightness.

It's not just our experts that think that though. Judges from the Guild of Fine Food Great Taste Awards have repeatedly described Yorkshire Gold as 'bright, rounded and delivered freshness'. More importantly though, what do you think? We'd love to hear your tasting notes in a comment below.



Hands Off Our Tea!

Remember when you were little, and you were always told never to touch things? Usually when you were being dragged around the shops or at an aunt's house?

Well, we've a bit of a hands-off approach at Yorkshire Tea, too. Our tea leaves are a bit like fine bone china in many ways. They're not just

the best quality, they're incredibly delicate too. That's why

our tea has been handled with almost obsessive care before it arrives at your supermarket.

At Taylors of Harrogate, we believe that the less tea is handled, the better the quality. This starts when it's carefully plucked from the tea bush by nimble hands, then gently spread out and left to 'wither' naturally before being processed.

Then, to treat our leaves with even greater TLC, we developed our very own leaf grade. Tea is 'graded' by being passed through a series of vibrating sieves which get finer and finer. but as we really only buy two or three different grades of tea from each supplier, it's pointless separating them any more than that because we blend them back together anyway back in Harrogate. So we have some sieves removed and only use the ones we need, which reduces the amount our leaves are bashed about in grading.

Then there's how we blend it. After precisely weighing out the various different tea leaves to our secret recipe, they are very gently mixed together in one of our special blending drums. These drums rotate very slowly and precisely, twelve times. Any less and the teas would not be properly mixed. Any more and the leaves could bruise and affect the flavour.

We've even been canny in reducing the number of bends in the pipes that transport our tea around our factory so they travel in as straight a line as possible. This avoids unnecessary bruising when the leaves hit bends in the pipes.

So next time you're making a proper brew, remember this... tea is delicate, and needs handling gently. In fact, some say 'tea has ears', so speak in soft tones too.

At least if anyone catches you whispering to your tea bag as you gently place it in your mug, cup or teapot, you can now tell them the full story why.

In fact, if you've a story about how much you care for your Yorkshire Tea, we'd love to hear it – just whisper a comment in the box below.



**TEA -
FROM THE LAND OF A THOUSAND HILLS**



yorkshire gas and power

Yorkshire Gas and Power is a licensed commercial mains gas and electricity supplier with a refreshingly different view on how business energy customers and brokers should be treated by an energy supplier.



We have focused on growing organically without the need for any finance, and have experienced continued rapid growth since the company was established in 2009 by the Managing Director Rishi Raichura. To date we have achieved an annual turnover of £8m, a 100% increase on the previous year, with plans in place to grow again this year by 150%, with the aim of being a serious competitor to the 'Big 6' over the next 5 years.



We aim to be different by being passionate about providing a first class experience to our customers and brokers alike by using our stringent customer service protocols to ensure that our staff take full ownership of customer queries and ensure that they are resolved in a timely manner with regular contact from YGP to provide updates. If you would like to enquire about our services or to add YGP to your supplier tender list within your brokerage or consultancy contact us using



Here at Yorkshire Gas and Power (“YGP”) we pride ourselves in delivering highly cost effective business gas and business electricity to organisations throughout England, Scotland and Wales. YGP do this by aggressively driving costs out of our business to allow us to deliver cost effective business electricity and business gas to our non-domestic customers, whilst maintaining the highest levels of customer service and satisfaction.



YGP are one of the fastest growing companies in the UK, and not only within the energy sector. This is down to our ability to make our potential customers an offer they cannot refuse: pay less for your business gas and business electricity and receive an outstanding level of customer service. If you want to see how much we can save on your business gas and business electric contracts, just complete the form on the right. A business specialist will contact you shortly to give you all the information you need to help drive down your business energy costs.



If you have a requirement for us to assist in making your business run more smoothly we will try our very best to accommodate. We have a variety of products to suit all businesses from small outlets to multi-national corporations covered by highly competitive contract prices. This combined with our high standards of customer service will make it easy for your business to allow YGP to handle all its energy requirements for the lifetime of the business.



Fixed Price Products

YGP provide 1, 2 or 3 year fixed price business gas and business electricity supply contracts with the ability to provide common contract end dates to allow all your business energy contracts to fall in line. You have complete peace of mind that your prices will remain fixed for the duration of the contract term.

Flexible & Pass-Through Products

If you are willing and able to take more risk on your energy spend we can accommodate for this by providing flexible and pass-through contracts where certain elements of the cost of energy is charged at the pass-through rates passing on some of the risk to you in order to attempt to achieve a saving over traditional energy purchasing methods.

Multi-site Contracts

YGP are able to supply multiple business sites under one contract and provide highly flexible billing options to meet your all your requirements.

Billing

YGP provide simple, no fuss billing with easy to understand invoices. With the ability to set up monthly payment plans we are able to spread the cost of your energy across the year to eliminate seasonal fluctuations in your energy bills to make it easier to manage the cash flow in your business.



OUR SERVICE

PLUMBING

Repairs :

Central heating, no hot water, pumps, valves, zone valves, powerflushing, cylinders, immersion heaters and air locks. Overflowing water tanks, burst pipes, taps, radiators and pipes.

Leaks :

Basin, bath and sink, tank, cylinders, o/flows, taps, burst pipes, radiators and pipes.

Installations :

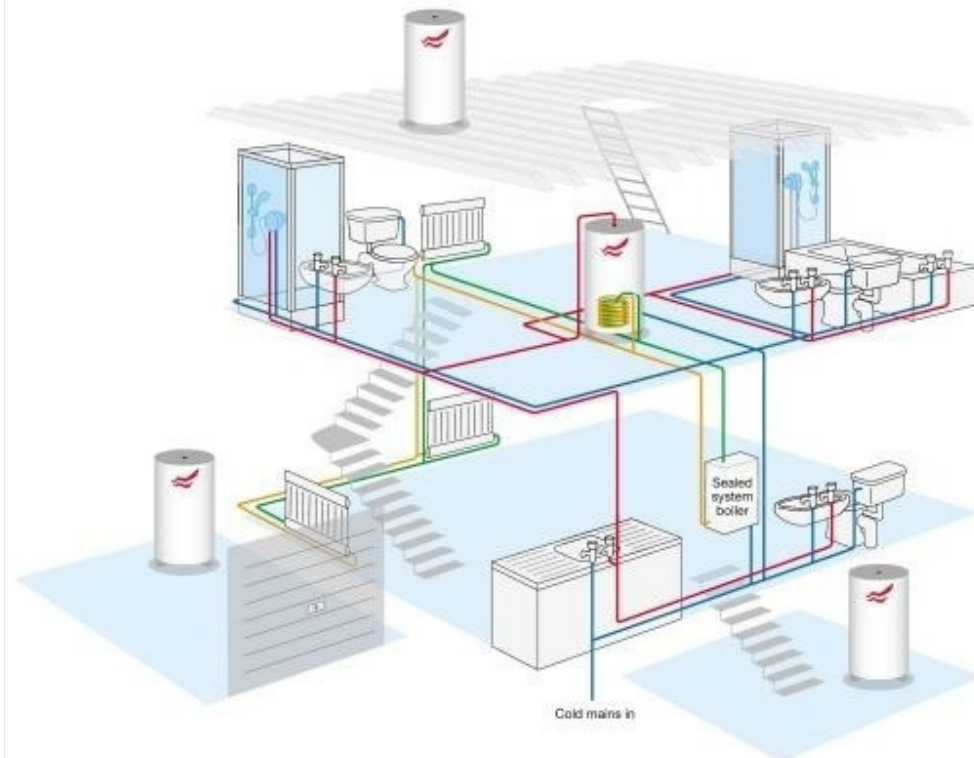
Central heating, boilers, Vented and UN-vented cylinders, storage tanks and radiators. Bath suites and sanitary ware.

All of our engineers are Corgi Registered and fully qualified. They wear uniforms and carry identification cards. They are smart and well presented.

We turn up when we say we will turn up.

During out-of-office hours the freephone number connects to our emergency callout line

UNVENTED WATER SYSTEMS



Unvented hot water systems are often specified by home makers who want a versatile output but need to save as much space as possible. An unvented hot water cylinder means there is no need for a cold water storage tank whilst still keeping all the benefits of a conventional system and more.

All you need is to site your gas central heating boiler in your property, position the unvented hot water cylinder (normally in the airing cupboard) and connect the two together and add your controls and an expansion vessel. This means there are no tanks in the loft area, loft space is saved. An airing cupboard contains the hot water

cylinder. The unvented hot water systems kit is quite expensive compared with a normal conventional system or a combination boiler.

You'll definitely need a well skilled installer for this installation which we can supply.

For more information on unvented hot water systems, a price quote or anything else we can help with, feel free to contact us.

SOLAR WATER SYSTEMS



The sun is the most abundant source of energy available on earth. Energy arriving at the earth's surface by way of solar radiation over a period of 40 minutes is the equivalent of the power used by the entire population of the earth in one year.

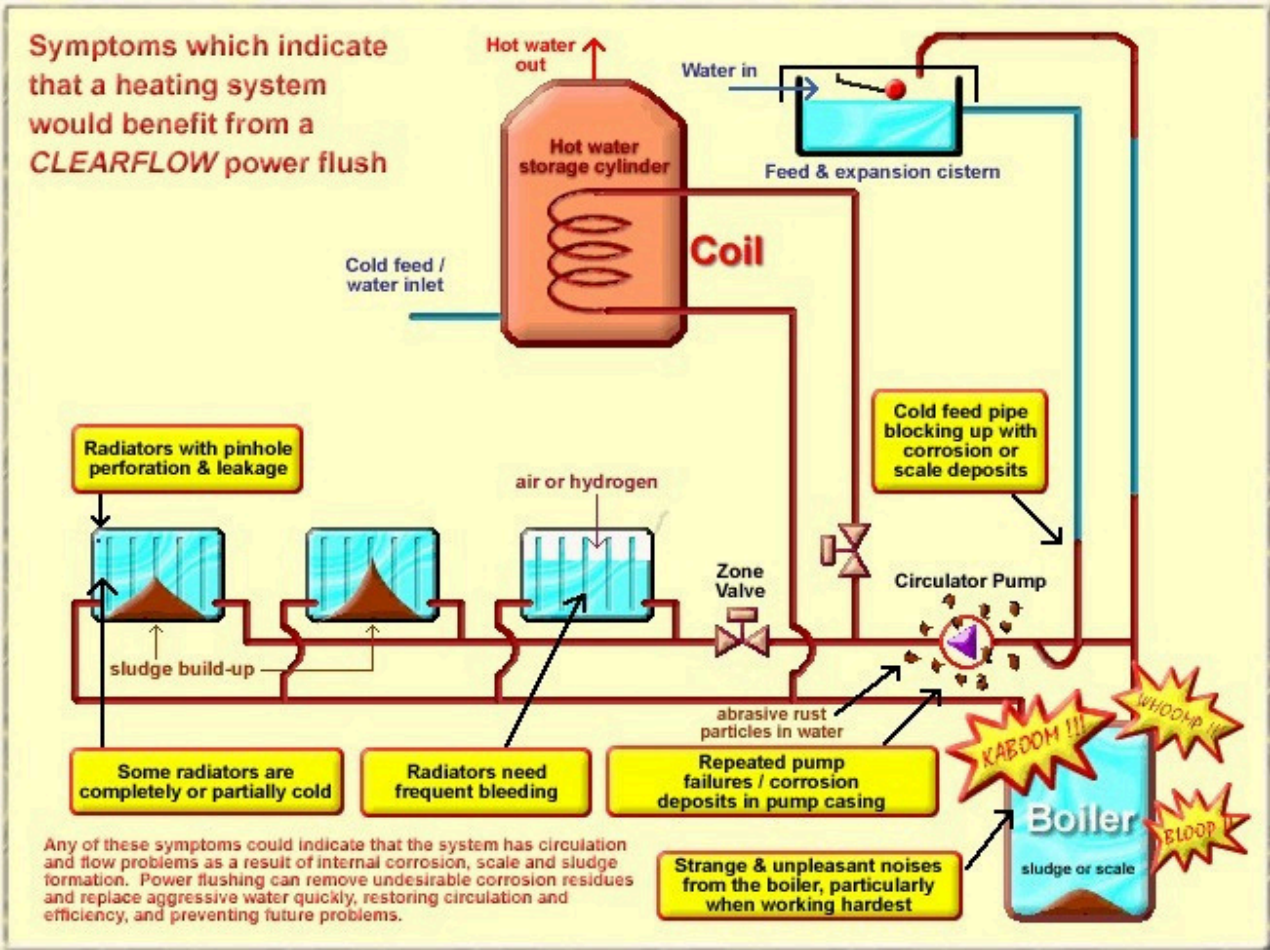
In fact, parts of the UK have annual solar radiation levels equal to 60% of those experienced at the equator. Some 70% of UK annual radiation is received over the period April to September and 25% in the months June and July.

A well designed system will typically provide 80% of a family's hot water requirements during the summer months

of April to September and make a useful contribution during the rest of the year. In a typical year the system will overall provide 30-70% of a family's annual domestic water heating needs.

The Ultimate Central Heating Pain Killer

POWER FLUSHING



Please take your time to read the following information carefully, you may recognise some of the symptoms which your central heating system may already experience!

If your system has any of the following symptoms it is likely to benefit from a Power Flush:

Cold spots on radiators

Blocked radiators

Radiators frequently needing venting & bleeding

Boiler noise

Boiler failure or lockout

Noisy pump

Pump failure

Heating circulation problems

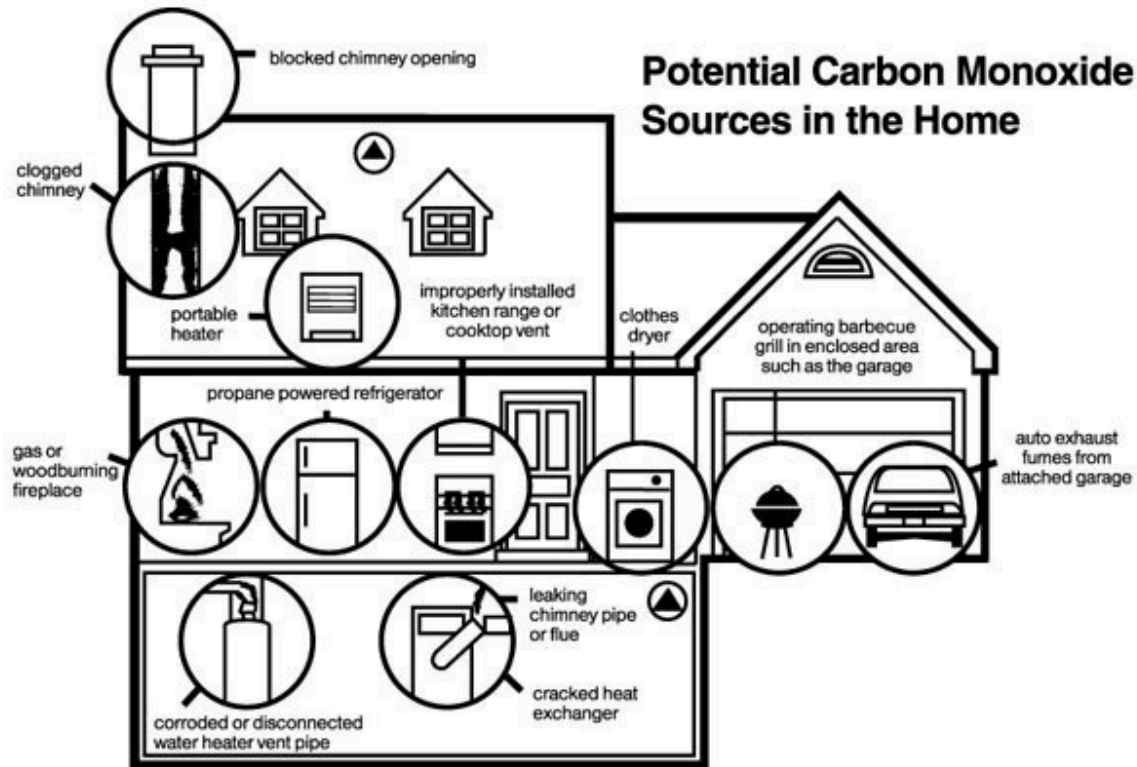
System is slow to heat up

Reduced heating output

Pinhole leaks from radiators

Blocked inoperative or leaking radiator valves

CARBON MONOXIDE



Carbon Monoxide in the environment can have a devastating effect on human health! For most of us it would be the most dangerous gas we might ever experience. It is often referred to as the "hidden gas" because it is very hard to detect! However, the effects of CO are quite dramatic and in high concentrations it will KILL within a few minutes!

When we breathe our lungs absorb oxygen. However, CO can be absorbed 300 times more readily into the blood stream than oxygen and when our haemoglobin, or red blood cells, become saturated with CO no oxygen can be absorbed!!! One of the functions of oxygen is to remove waste matter from our tissues, so without oxygen, your blood rapidly becomes poisoned!

The health and safety executive (HSE) has issued a warning about the dangers of carbon monoxide CO poisoning. As the cold weather approaches, it has urged homeowners and landlords to ensure that their gas appliances are safe to use. Every year approximately 30 people die from carbon monoxide CO poisoning caused by gas appliances and flues which have been either poorly installed or maintained. Many others also suffer from ill health as a result of CO poisoning.

Fuel gases are safe to use. It is only when they do not burn correctly, as with other types of fuels such as coal, wood or oil, excess CO is produced which is poisonous. You cannot see, smell or taste CO fumes, and this could leave anybody exposed. This could leave you feeling unwell and in the worst situations, CO can KILL without warning and within minutes.

The most vulnerable are the elderly and the youngsters !!! Protect them with regularly servicing of your Gas

Appliances !!!

BOILERS

Your choice of boiler depends on where it's being installed. Different sized establishments all have different needs – and suit different boilers. Whenever we give you a quote we will always recommend the specific machine that is best suited to your individual requirements. Here, though, is an overall guide to the different types of boilers that are available:

Combination boilers:

Combination boilers, as the name suggests, combine most of the components of a conventional system i.e. boiler, cylinder, pump, control valves and thermostats. Together, these are housed in one unit (The Combi). The technology involved with this type boiler has improved at a dramatic rate over the last five years. Where, not so long ago, a combi would only produce nine litres of hot water per minute at 35°. Nowadays they can produce up to eighteen litres a minute at 35°. This is why they now account for most new boilers found in the UK today. In general, combination boilers best suit flats and small houses.

Conventional boilers:

A conventional system (as opposed to a combi system) is one where a cold water storage tank, a hot water storage cylinder, a heat only boiler and separate controls are installed to provide primarily a greater volume of hot water. This type of system is more suitable for larger houses with two or more bathrooms where hot water demand at several taps is likely to be simultaneous. Conventional boilers best suit bigger houses.

Condensation systems: From April 2005 everyone's had to fit condensing boilers as part of the Kyoto agreement. This

is good news for

the environment since it has reduced carbon dioxide emissions by 15%. (Incidentally, all our fleet vans run on LPG – another environmentally friendly measure). Installers, such as us here at Twinheat Ltd, follow official CORGI guidelines to decide whether installing a condensing boiler is suitable – there are still some exceptions (around 5%). Condensing boilers all produce steam (or plumbing). It's not harmful, but will cool into a liquid; around 0.5 to 1 litre an hour. You can dispose of this in a number of ways: via sink waste, soil pipes or an outside gully. We will recommend which is best for you. We'll also help you decide if, and where, the flue ought to be situated.

GAS FIRES

Twinheat Ltd is a provider of traditional and modern fireplaces and accessories. Our knowledge and experience provides the security you need when considering a new fireplace.

We install a wide range of fires and fireplaces in a variety of materials including cast iron, wood, stone and marble, essentially to give you choice and ideas. Our extensive range is supplied from the UK's finest manufacturers.

Twinheat Ltd is always happy to offer a free consultation or advice on our product range and services. We take into consideration safety, measurements, fuel and the period of the property. Our evaluation will give you an overall assessment of the fireplace most suited to your needs and your budget.

YORKSHIRE BADGES.co.uk
wear the white rose with pride

YORKSHIRE

Support Yorkshire
Support a charity
BUY A BADGE AND WEAR
IT WITH PRIDE

ENAMEL | HALLMARKED GOLD & SILVER | BADGES & PRODUCTS

We specialise in the design and manufacture of all types of badge. Popular with businesses, charities and groups of all kinds.

Established in 1975, the House of Logos is the UK market leader in the design and manufacturer of stick pins, badges, tie pins, pendants, cufflinks, earrings, keyrings and other promotional products. All items can be made to your specification in either gold, silver, pewter or enamelled base metals. Our items are ideal for promotional events, new product launches, to enhance corporate identities, awards and presentations, charity fund raises, memberships, conferences, anniversaries, exhibition give-aways, incentives and promotions. House of Logos is a trade and end user supplier. Now for a spot of old history surrounding the Yorkshire Rose...



Yorkshire Badges ships *internationally* and accepts 24 different currencies including

Euro

Canadian Dollar

British Pound

U.S. Dollar

Japanese Yen

Australian Dollar

New Zealand Dollar

Swiss Franc

Hong Kong Dollar

Singapore Dollar

Swedish Krona
Danish Krone
Polish Zloty
Norwegian Krone
Hungarian Forint
Czech Koruna
Israeli New Shekel
Mexican Peso
Brazilian Real (only for Brazilian members)
Malaysian Ringgit (only for Malaysian members)
Philippine Peso
New Taiwan Dollar
Thai Baht
Turkish Lira (only for Turkish members)

Yorkshire collieries



In 1984, the Yorkshire area had a total of [56 collieries](#). As of 2013 there are only two: Kellingley, and Hatfield. In 1984, 15 of the collieries were in the [Wakefield district](#), 11 in the [Rotherham district](#), 10 in the [Barnsley district](#), 9 in the [Doncaster district](#), 6 in the [Selby district](#), 3 in the [Leeds district](#) and 2 in the [Kirklees district](#). The Yorkshire Area of the Coal Board also included [Manton](#) and [Shireoaks](#) collieries, which were geographically in [Nottinghamshire](#); they closed in 1994 and 1990 respectively.







YORKSHIRE MINES :

The Gem Mining Industry In Sri Lanka

Sri Lanka has been famous from time immemorial for the great variety and abundance of gem minerals of extremely high quality and uniqueness, earned it the name Ratna Deepa meaning GemIsland. Nature in her bounty has chosen the bosom of Sri Lanka to enshrine some of her rarest treasures.



Significant gem fields had been known from ancient times. Blue Sapphires, Cat's Eyes, Alexandrites, Rubies, Star stones found embedded in layer of gravel and sand, in river beds, marshes, fields or accumulated at the foot of hills have made Sri Lanka the renowned island for gems. These precious

stones perfected in the laboratory of nature lay hidden of countless ages, their luster undimmed, their value unrecognized. Sri Lanka ranks with Myanmar, Brazil, South Africa and Thailand as one of the world's most important gem bearing nations. The story of Sri Lanka's gems is as old as civilization itself. Legends, myths and the occult have been associated with the long history of the island's precious stones. Gems are

Sderieply embedded in the traditional beliefs and the religious life of the majority of Lankans. Priceless gems are among the treasures kept in the relic chambers of the great Buddhist stupas in the island.

Gem Mining Procedure

Mining for gemstones is carried out on a cooperative basis. A number of miners form a group and share the costs of labour and profits from the sale of gemstones. This group is known as a Karuhavula. Its most important members are the investor and the miners. The investor finances the whole operation project up to the sorting stage. The miners decide on a suitable site, once a suitable site is chosen, miners excavate until they reach the gem bearing illama. A miner is able to judge the depth of the illama by inserting a steel rod into the earth until it reaches the layer below the illama, called the malava. Although the malava is found beneath the illama, there is a possibility of finding another layer of illama beneath the malava. The mine owner, being the head of a mine, is responsible for various legal activities and requirements. The organization and operation of a mine requires particular skills and some considerable experience of the industry. Mine owners tend to have been involved in gem mining for a significant period of time and the majority of them were middle aged.





Mine Workers

The majority of gem mining in Sri Lanka is carried out within communities by the local population. It is predominantly a low-technology labor intensive industry carried out as part of the communities a normal cycle of activities, usually when the agricultural workload is at a minimum and when the paddy fields are not producing crops. In Sri Lanka gem mining is solely a male occupation. The numbers of staff employed by owners varied depending on the type of operation carried out with 5-6 people employed in shallow mines, 8-12 in deep mines and around 7 in river dredging. Total numbers employed tended to average between 11- 16 depending on the number of mines owned. The length of time of involvement in the industry also varied but the majority of owners had worked in the industry for at least 6

years with some having worked up to 30 years in the business. Most of them took up mining as it was shown to be profitable and several had progressed to become mine owners after working as gem miners themselves, using what they had earned to invest in their own mines.





Gem mining is a physically demanding and labour intensive occupation and which is restricted to the male population in Sri Lanka. Mine workers cover a wide range of ages from 18-50 with a relatively even distribution throughout this range. No children below the age of 18 are allowed to work in gem mining.

Mine workers enter into a verbal agreement with a mine owner who is generally someone well known to the owner and local to the area. 70% of miners work in the industry because there is either no alternative employment or because they have specialist skills in the industry. Only a small proportion (20%) got involved with mining in anticipation of making high profits. Mineworkers tend to stay in the industry for several years with the greatest majority having worked in mining for 11-20 years.



Yorkshire Bank was founded in 1859 in Halifax, West Yorkshire. Yorkshire Bank has 182 retail branches, a strong personal customer base and a business banking capability through a UK-wide network of 22 Business & Private Banking Centres. Yorkshire Bank is a trading name of Clydesdale Bank plc, a subsidiary of the [National Australia Bank Group](#)(opens in a new window) of companies. Yorkshire Bank joined the Group in 1990.

Corporate Governance

The Group confirms that it complies with the Prudential Regulation Authority's Senior Management Arrangements, Systems and Controls sourcebook (SYSC) 4.3A.11R requiring a firm that maintains a website to explain on the website how it complies with certain requirements of SYSC relating to governance.

To demonstrate compliance with certain of the SYSC requirements the Group has published a Corporate Governance Statement.

The bank was established on 1 May 1859 by Colonel [Edward Akroyd](#) of Halifax. Based in Leeds it was known as the [West Riding Penny Savings Bank](#) . It had originally been planned as a [provident society](#) but the status of [savings bank](#) was eventually chosen.

The bank was registered under the [Friendly Societies Act](#) and individual deposits were restricted to £30 per annum, up to a cumulative balance of £150. Within a year the bank had opened 24 branches, and a further 104 in the year after. Sub-branches were opened in schools and church halls.

The bank was operated on a non-profit making basis and in 1860 it was decided to extend operation to the other [Ridings](#) of [Yorkshire](#). To recognise this the name was changed to the *Yorkshire Penny Bank*. In 1872 it issued [cheque books](#) for the first time, primarily for small tradesmen. At that time the bank became the first to create *school banks*, to encourage the idea of saving at an early age.



In 1911 depositors' balances were valued at £18 million although reserves were only £500,000 and that existing guarantees were not enough. The [Bank of England](#) organised a takeover by a consortium of banks ([National Provincial Bank](#), [Westminster Bank](#), [Williams Deacon's Bank](#), [Lloyds Bank](#), [Barclays Bank](#), [Glyn Mills](#)) and the Yorkshire Penny Bank adopted [limited liability](#). After this the bank was able to offer overdrafts for the first time. In its centenary year of 1959 the bank's name changed to *Yorkshire Bank Limited*. During the 1970s the bank became one of the first to offer fee-free banking whilst in credit, a move that took bigger rivals a decade to follow. In 1982 it adopted [public limited company](#) status.

During the [Miners' Strike](#) of 1984-85 the bank offered [miners](#) who were mortgage holders a deferment, allowing them to postpone payments for the duration of the dispute. The strike took place in the bank's heartland and many miners were customers, having been encouraged by the [National Coal Board](#) to have their [pay](#) mandated to a bank account.

In 1990 the [National Australia Bank](#) Group acquired the bank from the consortium of owning banks which, after mergers and acquisitions, were the [National Westminster Bank](#), (holders of 40%), [Barclays Bank](#) (32%), [Lloyds Bank](#) (20%), and [Royal Bank of Scotland](#) (8%). The price paid was £1 billion and the bank joined National Australia Bank's other European businesses, [Clydesdale Bank](#) (Scotland) and [Northern Bank](#) (which operated in both jurisdictions in Ireland).



In 2005 the National Australia Bank announced its intention to merge the Yorkshire Bank with the Clydesdale under one operating licence, in which the former would be a trading name of the latter. Both operate under separate identities although the Clydesdale brand is the one that has been used in further expansion into the south of England ([Northern Bank was sold to Danske Bank](#) of Denmark along with its operations in the Republic of Ireland, the [National Irish Bank](#)). At the same time 40 branches were closed, a reduction of a fifth of the Yorkshire-Bank network.[5] In 2012 National Australia Bank completed a strategic review of its UK businesses and decided to scale back operations, completely stopping Commercial Property Investment lending and closing 29 Financial Solutions Centres, with the resultant loss of 1400-jobs over 3 years.[6]

In 2013, Yorkshire Bank forgot to renew its [domain name](#), leading to customers being unable to log onto its website for a number of days. Yorkshire Bank blamed individual ISPs saying they had not refreshed their servers.[7] On 2 September 2014 the bank suffered more IT related issues as its systems left customers unable to make or receive payments for a period of time.[8]

National Australia Bank confirmed in October 2014 that it planned to exit the UK, and was considering a number of options for Yorkshire and Clydesdale Banks, including a possible stock market listing.[9]

YORKSHIRE ROAD CONSTRUCTIONS

PROCESSES IN BITUMINOUS ROAD CONSTRUCTION

1. Preparation of the existing base course layer

The existing surface is prepared by removing the pot holes or rust if any. The irregularities are filled in with premix chippings at least a week before laying surface course. If the existing pavement is extremely way, a bituminous leveling course of adequate thickness is provided to lay a bituminous concrete surface course on a binder course instead of directly laying it on a WBM.



2. Application of Tuck Coat

It is desirable to lay AC layer over a bituminous base or binder course. A tack coat of bitumen is applied at 6.0 to 7.5 kg per 10 sq.m area, this quantity may be increased to 7.5 to 10 kg for non-bituminous base.



3. Preparation and placing of Premix

The premix is prepared in a hot mix plant of a required capacity with the desired quality control. The bitumen may be heated upto 150 – 177 deg C and the aggregate temperature should not differ by over 14 deg C from the binder temperature. The hot mixed material is collected from the mixture by the transporters, carried to the location is spread by

a mechanical paver at a temperature of 121 to 163 deg C. the camber and the thickness of the layer are accurately verified. The control of the temperatures during the mixing and the compaction are of great significance in the strength of the resulting pavement structure.

4. Rolling

A mix after it is placed on the base course is thoroughly compacted by rolling at a speed not more than 5km per hour.

The initial or break down rolling is done by 8 to 12 tonnes roller and the intermediate rolling is done with a fixed wheel pneumatic roller of 15 to 30 tonnes having a tyre pressure of 7kg per sq.cm. the wheels of the roller are kept damp with water.

The number of passes required depends on the thickness of the layer. In warm weather rolling on the next day, helps to increase the density if the initial rolling was not adequate. The final rolling or finishing is done by 8 to 10 tonne tandem roller.



5. Quality control of bituminous concrete construction

The routine checks are carried out at site to ensure the quality of the resulting pavement mixture and the pavement surface.

Periodical checks are made for

a) Aggregate grading

b) Grade of bitumen

c) Temperature of aggregate

d) Temperature of paving mix during mixing and compaction.

At least one sample for every 100 tonnes of the mix discharged by the hot mix plant is collected and tested for above requirements. Marshall tests are also conducted. For every 100 sq.m of the compacted surface, one test of the field density is conducted to check whether it is atleast 95% of the density obtained in the laboratory. The variation in the thickness allowed is 6mm per 4.5m length of construction.

6. Finished surface:

The AC surface should be checked by a 3.0 m straight edge. The longitudinal undulations should not exceed 8.0 mm and the number of undulations higher than 6.0 mm should not exceed 10 in a length of 300 m. The cross-traffic profile should not have undulations exceeding 4.0mm.

YORKSHIRE BRIDGE CONSTRUCTIONS



•Structure ID:

- Location: River Mile 22.0. 675
- River Elevation: Feet. Future MN-36,
- Highway: WI-64. Concrete
- Traffic Count: Extradosed. 3,010 Feet
- Bridge Type: (Estimated). 4 Lanes.
- Length:
- Width:
- Navigation Channel Width: 500 Feet (Estimated).
- Height Above Water: 140 Feet (Estimated).
- Date Built: Projected 2012 To 2014.

A new bridge to span the Saint Croix River has been talked about for decades. The existing bridge, the Stillwater Lift Bridge, is old and narrow. It is located right downtown Stillwater, which means that through and rush hour traffic has to compete with local and tourist traffic. The result is a huge traffic mess in an area that deserves to be much more calm and relaxed.



Local stakeholders have opposed the new bridge for years. They cite the fact that Stillwater is the birthplace of Minnesota, the area is historic in nature, and the river is designated a wild and scenic river. They advocate that a new bridge would spoil the scenery. They also refuse to give up the lift bridge, stating that it is also a historic attraction.

At the same time, population pressures are pushing Twin Cities area residents into western Wisconsin in ever growing numbers.

Redoepelde, wa hnoe wlv e on the Wisconsin side say that they deserve a reasonable highway connection to the Twin Cities. bridge would likely open the flood gates for migration into western Wisconsin. Land owners would love to see that happen.

The bridge process fell apart in the late 1990s as a vast majority of the stakeholders simply would not accept a new

bridge of any

kind. The process was restarted in the early 2000s as part of a new federal program to speed up the environmental process. Of seven projects in that program, the other six have since been built. A new sleek and thin bridge design has been approved

by all concerned parties, the environmental impact study is approved, and initial funding is in place. This is enough to start the preparation work, and get ready to start foundations. Some of the prep work that has been lumped into this project is

to remove

an equal number of local eyesore structures and reclaim spoiled land to make up for the visual impact of the new bridge.

The bridge itself will be only the second extradosed bridge to be built in the United States. An extradosed bridge is similar

to a cable

stayed bridge, but with a major difference. In a cable stayed bridge, the cables hold up the deck segments. That requires and a steep angle for the cables. An extradosed bridge uses the shorter towers to support the deck segments near the

tower. The

shallow angle of the cables means that they mostly pull the deck segments together rather than holding them up.

is that the segments are held tightly together, so they essentially perform as single beams. The extradosed style is more expensive

than a beam bridge, yet cheaper than a cable stayed bridge. It requires fewer pylons than a beam bridge, but more than a bridge.

Update—as of early 2011, support is again building for the bridge. Both of Minnesota's Senators, Amy Klobuchar and Al Franken, support the project, as well as Representative Michele Bachmann. They are attempting to introduce a bill in Congress that would make a special law to override the National Park Service, granting government approval to build the bridge.

The image above is from the bridge project handouts. It depicts the river crossing and the freeway link to Minnesota.





The Functional Medicine Approach to Health

Functional Medicine is a concept that was founded in the USA about 30 years ago and is the foundation upon which many nutritional therapists base their consultations. It is a patient-centred approach to health, looking at the individual as a whole rather than just the condition and symptoms they are presenting with. It takes into account a person's personal and family medical history, their diet, lifestyle and different body systems. Using this information a practitioner can make dietary recommendations which support the individual's overall health thereby trying to address any disorders which may underlie the presenting condition. The practitioner may also recommend tests as confirmation of a condition and where necessary, i.e. where an outcome cannot be achieved by diet alone, suggest the individual takes supplements.

The Functional Medicine approach can best be illustrated by looking at the following case study:

Jane came to see me regarding losing weight. She had tried various diets over the years but hadn't managed to keep the weight off. I asked her to complete a questionnaire and from that I noticed a few things that could be making losing weight difficult for her. Firstly Jane had ticked quite a few boxes under the thyroid profile, such as difficulty losing weight, sensitivity to cold, coarse, thinning hair, unexplained depression and dry and thickened skin. She had also completed a Breda Barnes Temperature Test, which is a free test that can be done at home. This suggested she may have low thyroid activity. The thyroid controls metabolism, and therefore the rate at which the body uses energy and burns fat. If it is slower than normal then fat is burned less quickly and it may be difficult to lose weight.

Secondly, from completion of the Adrenal Stress profile, it was possible that Jane's stress hormones were imbalanced. In order to confirm this I recommended that Jane take an Adrenal Stress Index test, which she did and it did indeed show that she had low levels of the stress hormone Cortisol. As Cortisol is required for the conversion of thyroid hormones, it could be a factor in her low thyroid activity.

In addition to this Jane was showing symptoms of a blood sugar imbalance such as a need for frequent meals and poor concentration, irritability and craving chocolate when she missed a meal. This can have a knock on effect on the stress hormones, which, as well as the high levels of stress she was experiencing at work and home, could be a factor in her low Cortisol levels.

Finally, she had a number of symptoms which suggested a female hormone imbalance. Again, this could be a factor in her weight loss problems and could have been contributed to by the other imbalances.

Therefore, rather than the weight loss route Jane had been used to going down of calorie counting and exercise, the recommendations I made to her addressed the underlying issues with her thyroid, adrenals, blood sugar and female hormones. Until these issues were properly dealt with, Jane would continue to have problems losing weight. In addition to this, by addressing the various imbalances it benefited her health in many other ways.

YORKSHIRE SHIPPING



Yorkshire Shipping was formed in December 2002 with offices based at the Humber Ports of Hull and Immingham

with Goole and Grimsby being served from the main Port offices.

The main business areas that we cover are

- Ships Agency
- Customs Clearance
- Cargo Logistics
- Freight Forwarding
- Ship Brokering & Chartering
- F.E.R.I. Processing to the Congo



PORT AGENCY

We are currently representing various principals for their ships' agency business handling both Deep Sea and Short Sea vessels carrying a variety of cargoes.

Cargo Types

General Cargo

Bulk Animal Feeds

Project and Modular Cargo

Timber

Bulk Cargoes both Wet and Dry

Liner Services from the Baltic Ports

Various Tankers

Recent expansion means we now represent vehicles calling at a Bulk Handling facility in Goole



CUSTOMS CLEARANCE

We have the facilities of Direct Trader Input & 'T' Form facilities from Hull & Immingham for all Northern Ports as well as Felixstowe & Southampton

with contacts at all the other Ports throughout the UK.

All Import and Export entries are Computer-generated usually providing prompt clearance within minutes.

Transport can then be organised in-line with Customer delivery requirements.

With established connections and our extensive knowledge of Warehouse facilities that are available, storage can be arranged for the Customer including Bonded facilities if required.

Yorkshire Steel



Established in 1975 we supply a wide range of steel specifications. Combined with a wealth of experience and knowledge, we offer guidance on steel equivalent grades and hard to find steel specifications.

Whilst many things have changed in the steel industry our commitment to quality and service remains the same, with our dedication to total customer satisfaction. Much of our competition has been consumed by merger mania, hoping that bigger is better; we remain a family run business committed to providing a friendly and reliable service.

The most valuable possession we own is our reputation for quality and service.

Tool Steel

Whatever size you need, quality tool steel cut and delivered straight to your tool room



Tool steel stockholders and suppliers, delivering to the whole of the UK. West Yorkshire Steel are stockholders of roundbar, flatbar and plate. Large block, plate and diameters can be bandsaw cut to your specific requirements. Tool Steel specifications are stocked in a large range of grades conforming to British, European, American and International standards. Specifications are available for hot work, cold work and plastic mould applications, suitable for subsequent heat treatment and hardening. Tool steel to standards including [BS4659](#), [BS EN ISO 4957](#), [Werkstoff](#), [AISI](#), [DIN 17350](#), [ASTM A681](#) and EN10027-2 are stocked as well as other designated standards.

Our comprehensive database includes [tool steel brand names](#) - specifications and grades old and new. If you do not find the specification you require on our web site please contact our sales team who may be able to assist you with your enquiry.

Stainless Steel

ISO certified stainless steel that shines on through without a care that rust never sleeps



Stainless steel stockholders and suppliers, delivering to the whole of the UK. Stainless steel grades are stocked in roundbar, flat bar and plate (plasma cut). Specifications supplied include [precipitation hardening](#), [duplex](#), [super duplex](#), [austenitic](#) and [martensitic](#). Stainless steel grades are supplied in a large range conforming to British, European, American and International standards. We welcome export enquiries for stainless steel. Contact our sales office and consult our [shipping policy](#) for further details. If you do not find the specification you require on our web site please contact our experienced sales team who may be able to assist you with your enquiry.

Alloy Steel

Try a company with a strong heritage in high strength alloy steel



Alloy steel stockholders and suppliers, delivering to the whole of the UK. Alloy steel grades are stocked in roundbar, flatbar and plate. Specifications are supplied in a comprehensive range of grades conforming to British, European, American and International standards.

If you do not find the alloy steel grade you require on our web site please contact our sales team who may be able to assist you with your enquiry.

Alloy steel is ideally suited for applications that require higher strength, improved toughness or better wear resistance than standard carbon steel grades. The choice of an alloy steel is often determined by the tensile strength and ruling section of the steel. Other considerations are the wear resistance and impact properties of the steel. The mechanical properties achievable are dependent on the addition of elements such as nickel, chromium, molybdenum and vanadium. Other factors to be taken in to consideration are the availability of the alloy steel. The majority of alloy steel specifications are only available in diameters. [EN24T flat bar](#) can be produced by bandsaw cutting pieces from large rectangular block.

Carbon Steel

Engineering something interesting? Our quality carbon steel can help you make it happen!



Carbon steel stockholders and suppliers, delivering to the whole of stockholders UK. Carbon steel grades are in round bar, flat bar and steel plate. Carbon steel grades such as mild steel S275, S355, EN8 and EN9 can be supplied flame cut from plate. Steel profiles can be cut to your required sizes and if required surface ground on thickness.

If you do not find the a carbon steel specification you require on our web site please contact our sales team who may be able to assist you with your enquiry.

The characteristics of each carbon steel grade is mainly defined by the carbon content. The most common carbon steel grades have a carbon content ranging from 0.05% to 0.60%. For most engineering applications the maximum carbon content is 0.50%, carbon steel grades containing more carbon than this are usually used for tools. Carbon steel specifications are also defined by the addition of elements such as silicon, manganese, sulphur and phosphorous.

YORKSHIRE PETROLEUM COMPANY LIMITED



Yorkshire Petroleum Company Limited was registered on 17 Aug 2006. Our Company is Engaged in the processes of exploration, extraction, refining, transporting (often by oil tankers and pipelines), and marketing petroleum products. The largest volume products are fuel oil and gasoline (petrol).

The company's products have been sold in some countries under a subsidiary's name . In Europe, this company has a network of more than 4,400 service stations across six countries: Italy, Denmark, Belgium, the Netherlands, Luxembourg and, in Sweden, as the joint venture.

However, over the years, the company has closed many stations in residential areas and near apartment complexes.

Like its competitors, we also have a network of unmanned gas stations.



peel construction yorkshire ltd

We are a local building and construction company based in Huddersfield, Yorkshire, with a strong reputation built on quality and experience.

Throughout our ongoing development as a business, we have consistently found that customer satisfaction has been the driving factor to our success, as word of mouth is a powerful sales tool. Find out what some of our clients had to say about us below and discover more about why Peel Construction have earned a solid reputation for [quality](#) and [service](#).

Peel Construction is an established local building and construction company based in Huddersfield with a reputation built on quality and experience. We undertake all types of projects from all clients, private and commercial, with all levels of work catered for, from small home extensions to complete new builds.







At Peel Construction we pride ourselves on the level of service we provide. Our success in the building and construction industry is generated by inspiring confidence and working closely with our clients to satisfy their building requirements, as our testimonials show.





Our constructions

We believe that the key to a successful project is liaising with our clients at all stages of construction and ensuring communication is at the heart of the partnership. Our team have the relevant training, qualifications and experience to carry out their jobs efficiently, effectively and to the highest standard.





Our constructions



Our constructions

Environmental first place in Celebrating Construction in South Yorkshire Awards – 2014



Yorkshire Construction won the Environmental Award at this year's Celebrating Construction in South Yorkshire Awards organised by the Chartered Institute of Building. The event held on the 10th October at Cutler's Hall, Sheffield is one of Yorkshire's largest and most prestigious events and is open to developers, designers, builders and end users to promote a range of different sectors within construction including corporate responsibility, investing in skills, creating low carbon developments and being environmentally proactive.



The Environmental Award sponsored by VHE was presented to York
achieving environmental awareness through the effective use of -

shire Construction for demonstrating their commitment and progress to

Site Waste Management Plans

The Site Waste Management Plans Regulations 2008 were laid before the UK Parliament on 15 February 2008, and came into full force on 6 April 2008. The regulations do not apply to any project planned before 6 April, if construction work commenced before 1 July 2008, and apply only to projects in England.

The Site Waste Management Plans Regulations were repealed by Government on 1st December 2013 following a consultation, as part of the Government's initiative to reduce red tape.

They applied to all projects with a value of £300,000 or more, with additional updating requirements for projects with a value of £500,000 or more.

The regulations placed the initial responsibility for the production of the plan with the client. The client had to produce the plan before the project was started. If a project was started without a site waste management plan, then both the client and the principal contractor were guilty of an offence under these regulations. The regulations also laid out what the plan had to

include.

Climate and environmental training

We're the only provider to offer the full suite of IEMA qualifications for environmental practitioners, meaning our training can help you gain Associate Membership of IEMA, full membership or chartered status.

Our trainers are active climate and environmental consultants. When they aren't training they are advising companies on environmental compliance, strategy and implementation. This gives them a unique, practical understanding of the training they provide, using real life examples of problems they have solved and ensuring they are up to speed with all current issues in the field.

Information about Sustainable Supply Chain

Driven by legislation and increasing environmental awareness, sustainability has become an important issue among leading organisations, research institutions and policy-makers at national and international levels (Beamon, 1999; Prokesch, 2010; Stanford University SER Conference, 2010). Within organisations sustainability issues lie with strategic level decision-making on corporate social responsibility (CSR) and carry serious implications for purchasing and supply chain management.

Sustainability in supply chain management generally refers to continuous accountability for risk and negative impact caused by a range of actions along the supply chain. Sustainability efforts are also aimed at enhancing fairness and positive benefits for suppliers, workers, customers, end-users and any other stakeholders. Sustainability presents companies with an opportunity to forge new commercial relationships and build stronger core competencies (Fynes et al., 2005; Handfield and Bechtel, 2002). In addition, sustainable procurement practices can maximise business security "by ensuring that supply chains are robust and shock-proofed against sudden changes in price, availability and quality" (CIPS: Managing the storm and beyond). An impetus for pursuing sustainability is thus anchored in the ability of supply chains to secure long-term business survival, resilience and competitiveness (Prokesch, 2010).

Use of Innovation

Innovation is a new idea, more effective device or process. [1] Innovation can be viewed as the application of better solutions that meet

new requirements, inarticulated needs, or existing market needs. [2] This is accomplished through effective products, processes, services, technologies, or ideas that are readily available to markets, governments and society. The term innovation can be defined as something original and more effective and, as a consequence, new, that "breaks into" the market or society. [3]

While a novel device is often described as an innovation, in economics, management science, and other fields of practice and analysis innovation is generally considered to be a process that brings together various novel ideas in a way that they have an impact on society.