

Volume Fourteen

Issue Four



*Willamette Cascade
Model Railroad Club Inc.*
"Pride of the Tunnel Country"

www.wcmrrc.com



Since 1970

(541) 913-2389

"Pride of the Tunnel Country"

April 2023



Conductors Comments

By Walt Mulford, President

There's lots going on, even though our next setup event, the Lane County Fair is in July.

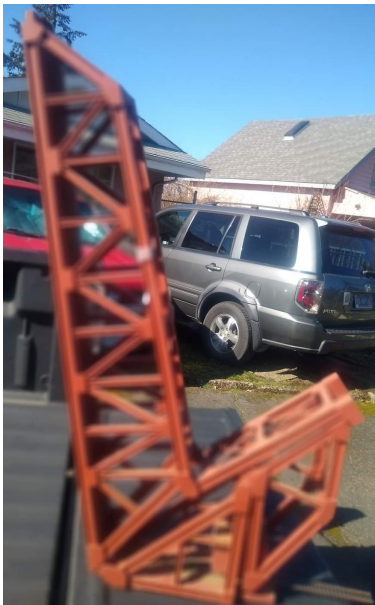
1. We got us a new P.O. Box. Which is less expensive than the previous one. This is mostly for correspondence with swap meet vendors.
2. Between now and the Lane County Fair show there will be signup sheets for signup, Teardown and run schedules at the meetings.
3. This all applies to the Benton County Fair in August as well.
4. There will be a list of T-Shirts and hats that are now available for purchase with some examples of the variety of shirts. Get in touch with Greg Kent for details.
5. Committee chair people are gonna give us the lowdown on what's up in said committees.
6. Check out the new club website at group.io Then: main@WillametteCascadeModelRailroadClub.groups.io All kinda communication can go on.
7. The Club has 58 members. Pretty good I'm thinkin'. Gary Schwieger, our membership chairman, can get you a paper copy of the membership directory or email one to you. Talk to Gary.

Nuff said. See you at the meeting



Off the Bench

By Mike Larson



So Here's some pictures or the New/Used single track bridge that we will be using for the backtrack. The same guy that built this one also built the clubs double track bridge. Lots of new plans for some of the clubs modules this year.

Photos by Mike Larson



The Sierra Army Depot Railroad Spurred a Modeling Project

by Bruce A Duncan

Southeast of Susanville, California, there is a railroad that would rival many short line railroads. It is the United States Army Railroad at the Sierra Army Depot near Herlong, California. The depot was established in 1942 and its High Desert climate makes it ideal for storage. Today the Depot's Railroad maintains an engine house, 59 miles of rail and 3 rail classification yards connecting to the 7 million cubic feet of covered storage warehouses and 799 earth covered igloos along the tracks. The Railroad has a direct connection with the Union Pacific and the National Railway System. The Depot's mission is to support Department of Defense logistics, storage and maintenance requirements (with their Railroad and other forms of transportation). EMD GP10 locomotives and a variety of USAX (United States Army) and DODX (Department of Defense) freight cars, from box cars to flat cars, move equipment and other loads around and into and out of this facility.

I've had the opportunity to stop at the base several times over the years on my way to the Reno/Carson City area. One such trip in the autumn of 1995 with my parents spurred on a modeling project for my father, Bill, and me. My late father has a section on our HO layout depicting loosely Camp Roberts, California, where he served some of his career during his 41 years of military service. And he needed some motive power for it. After finishing our business at the Base Exchange this trip we gravitated across the street to the box cars and tank cars parked on the siding. This action led to us meeting one of the Base locomotive engineers. When finding out we were model railroaders, he went on to give us a "red carpet" tour of the engine house and locomotives #1874 and #4618. He and his fellow engineer in the engine house were quite proud of their facility and locomotives. And it showed. The facility was spotless and the locomotives were immaculate. We took a lot of photos and gathered information.



Bill would go on to acquire two Walters HO GP9M undecorated locomotives at the WCMRRC Show and Swap meet that next spring. He then went about outfitting them with parts from Details West and Detail Associates to make them more prototype from the photos and information we gathered. The two real locomotives were not exactly the same. So the detail parts for both models were slightly different. He then spray painted them with Testors Red #1203, Yellow #1214 and Flat Black #1249, very close matches to the actual colors. Mind you, this is all back before Walthers released the generic version of their GP9M in this Army paint scheme. Bill then handed the locos over to me for my specialty, decaling. I used Microscale 87-70-6 and -2 RR Gothic Letters & Numbers Yellow (for the loco) and Black (for the number boards) and 87-249-6 45-degree Barricade Stripes. I applied all the letters and numbers one character at a time and added the nose barricade stripes using Walthers Solvaset #470. Mind you again, this is before Microscale came out with MC-4278 United States Army Diesel Locomotives decal sheet. I then turned the locos back over to my dad. We both agreed that Dullcote, which we normally use, would not due. We settled on Testors #1261`Glosscote Clear. The actual locomotives had a sheen to them.

Years later Intermountain would also come out with this model with all the "bells and whistles". They are very nicely detailed locomotives. Bill bought one before his passing. But we both favored his two scratch built locomotives spurred on by a trip many years ago. Bill's Camp Bob is still active on my layout featuring these two scratch built locomotives..



Photo - Sierra Army Depot Engine House with GP10's #1874 & #4618 - Oct 1995

Photo - Sierra Army Depot Engine House with GP10 #4618 - Oct 1995

Photo - Camp Bob Engine House with GP10 #4618 - Mar 2023



Big Boy Boiler

Membership Matters

By Gary Schwieger

Our membership is now at 58 people as of March 15,2023 with the possibility of two new members joining soon.

Because of you, we can enjoy good meetings, learn new modeling techniques, swap ideas, sponsor the swap meet and train shows, and run events in Lane, Benton and Douglas counties.

I have a current roster for membership, I will give them out at our next club meeting to those that do not have email addresses. Those that have emails, will send your copy to you.

If you have any questions or changes, contact me at (541) 729-8554.

We have a very good club and than you for your support.

Gary Schwieger, Chairperson.



How the Prototype Kit-Bash a tank car from Disconnect log cars



WHAT'S NEW

By Gary Schwieger

Need a new T-Shirt or Hat? Greg Kent is taking over the club clothing. Let him know what your need is and he will bring it to the following club meeting. He has a good inventory.

The Lane County Fair will be held July 17th through July 23rd, 2023. Mark your calendar for those dates because we will need club members to help set up and tear down. The fun part is running your trains.

The Benton County Fair will be held July 31st through August 5th, with tear down on August 6th. Again, make sure this is on your schedule. We will car pool and will arrange rides for set up and tear down and the days of the show. I would like a count of those members that can help and run trains in Corvallis!

Stay tuned as we will have a new Post Office Box located in the West Eugene Post Office. We Will announce this soon.

Peter Wood has offered his services as vendor coordinator for the 2024 Swap Meet and Train Show, scheduled for February 16th, as set up day and show days of February 17th, and February 18th, 2024.

Thank you, Peter!

Contest of the Month 2023

April - Vehicle or Equipment Model RR

- | | |
|---|--|
| May - Diesel Locomotive | October - Short Train not to Exceed
(5) Pieces |
| June - Trackside Structure or
Bridge (12"X12" Diorama's OK) | November - Maintenance of Way
Equipment or Cars |
| July - Steam Engine 6 Drivers or
Less | December - Single Dome Tank Car |
| August - Wood Products Car or
Load With Name | <i>The winner of the contest of the
Month receives a \$5.00 Gift card
for Eugene Toy & Hobby</i> |
| September - Caboose | |
-

DBK HOBBY

Collector, Buy, Sell Model Trains, Accessories Etc.	Dale Knox dbkhobby@gmail.com
---	--

P.O. Box 456 Elmira Or. 97437
DBK Hobby on Face Book and Instagram

541-603-8084

Dale Knox is going to have another sale on **April 15**. He has re-arranged garage with more space in aisles (36' wide) and added even more new shelving to accommodate more items.

Sale will be from 9-4 that day. 24483 Warthen Rd. Elmira.

He is also open by appointment. You can call him at **(541) 603-8084** to set up a time.

Willamette Cascade Model Railroad Club Says Thank You To:

Eugene Toy & Hobby – Alan, Andrew & Mark Agerter
32 East 11th Ave. Eugene, OR 97401
www.eugenetoyandhobby.com • (541) 344-2117
Thank You For All Of Your Support To Our Club!



TEMPLE'S TRAINS & THINGS

BUY-SELL-CONSIGNMENTS

Lee Temple, Owner

eBay user name: temples-trains-and-things

(541) 954-4917

ttandt@ram-mail.com

PO BOX 41267 Eugene,OR 97404



Contest of the Month Entries

1st Place - David Wolf



Greg Kent



Mike Larson



Milton Campbell

My Apology to Hill! I missed getting a picture of his entry.

Hill Hoffmen

COMMITTEES THAT COULD USE YOUR HELP

Swap Meet

Shows

Web Design

Communications

Modular

Clinics

Clinics

Finance

Ask and Get Involved

Submissions are accepted for the Newsletter by email to garyandbeckyd@gmail.com Dead line is the end of the previous month!

Club Officials

Elected Officers:

President: [Walt Mulford](#)

Vice President: [Milton Campbell](#)

Senior Members at Large:

[Greg Kent](#), [Jim Saville](#), [Gary Schwieger](#)

Junior Member at Large: [Asa Showalter](#)

Appointed Positions:

Modular Chair: [Mike Larson](#)

Modular Committee: [Gary Schwieger](#), [Mike Larson](#), [Greg Kent](#), [Noah Russell](#), [Walt Mulford](#).

Secretary: [Joe Rademacher](#)

News Letter Editor: [Gary Decker](#)

Communication Committee: [Gary Decker](#), [Milton Campbell](#), [Gill Hulin](#), [Thomas Olson](#),

Show Chair: [Gary Schwieger](#)

Clinic Chairs: [Lee Temple](#) & [Noah Russell](#)

Membership Chair: [Gary Schwieger](#)

Treasurer: [Gary Decker](#)

Sargent-at- Arms: [Martin Tighe](#)

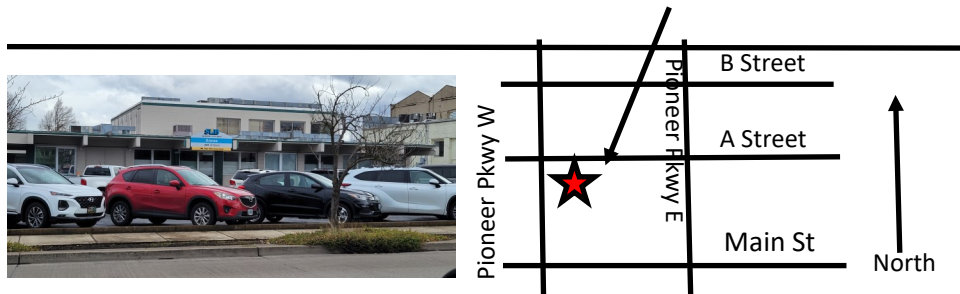
Web Master: [Milton Campbell](#) , [Gary Decker](#), [Rod Minarik](#)

Refreshment Chair: [Charlie Lange](#)

Prize Drawings: [Greg Kent](#)



Springfield Utility Board Annex



Run Schedule-April 2023

April 8th Informal breakfast at Brails Cafe-1689 Willamette St, Eugene at the Corner of 17th & Willamette. Arrive by 9:00 a.m. everyone goes Dutch and buys their own breakfast. Afterwards go to Eugene, Toy & Hobby 32 East 11th and pick up a few items you may need for your modeling purposes, pay on lay a way etc.

April 8th WCMRRC Springfield Utility Board Annex *See Map* Open for Sales at 5:00 pm with the Business Meeting Starting at 7:00pm those who would like to serve on committees or serve in an appointed roll This is a good time to explore opportunities for you! See you there!

May 13th WCMRRC Meeting

June 10th WCMRRC Meeting

July 8th WCMRRC Meeting

July 17th- 23rd Lane County Fair

July 31st - August 5th Benton County Fair

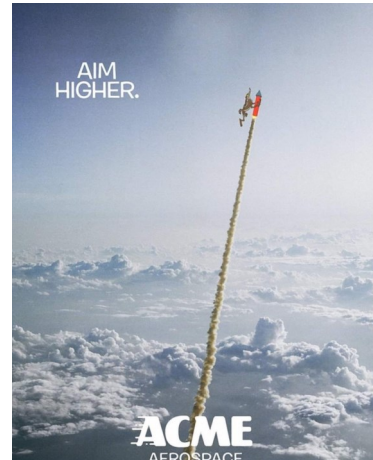
August 12th WCMRRC Meeting

September 9th WCMRRC Meeting/Picnic

October 14th WCMRRC Meeting

November 11th WCMRRC Meeting

December 9th Christmas Party/Meeting



Notice:

ALL SELLERS ARE LIMITED TO ONLY ONE TABLE, DUE TO THE LIMITED SPACE AT THE MEETINGS!

TABLE PRICE: \$5.00 - 1/2 TABLE \$3.00 PAYABLE TO THE PRIZE DRAWING COMMITTEE



WCMRRC
c/o Gary Decker
88165 Fern Meadows Ln
Veneta, OR 97487

"Pride of the Tunnel Country"

