

**Volume Fifteen**

**Issue Four**



***Willamette Cascade  
Model Railroad Club Inc.***  
"Pride of the Tunnel Country"

*www.wcmrrc.com*



*Since 1970*

*(541) 525 9404*

*"Pride of the Tunnel Country"*

***APRIL 2024***

*Gary Decker, Editor*



P O Box 23601

Eugene, OR 97402

# Conductors Comments

*By Walt Mulford, President*

What's on your hobby work bench? I touched on this a little last month about getting inspired to get some work done, model train-wise of course. I got some Amtrak Superliner passenger cars and two SDP40F's some months ago (thanks Mike Larson). This train is going to run on the club layout, and I couldn't wait to try them out at the Valley River Show. Well it didn't go so good. The 1st error I made, and I knew better, was running the train with truck mounted couplers. The cars uncoupled frequently. All my other equipment have body mounted couplers. Since this train was a 1st time run I did bring some tried and true equipment along in case of issues with the Amtrak equipment. And it is a good thing I did that. After just a couple of circuits around the layout the passenger train came off the layout and the reliable cars were put on to continue my run times. Note to self; no truck mounted couplers.

Another learning experience I had was the 85' Superliner cars, being 30+ft. longer than my freight cars really compounded the effect of the unevenness of the track. The rise and fall of the of the longer cars is greater than the shorter cars. It's math or physics or geology or somethin'. Anyway, thanks to Martin and Lee, I found out about "shelf" couplers that Kad

So, until yesterday, my workbench was full of Amtrak Superliner cars having body mounted Kadee #118's attached to them. Next run-Lane County Fair. I'll bring backup.

Nuff said

---

**DBK HOBBY**

Collector, Buy, Sell Model Trains, Accessories Etc.	<b>Dale Knox</b> dbkhobby@gmail.com
---	--

---

P.O. Box 456 Elmira Or. 97437  
DBK Hobby on Face Book and Instagram

---

**541-603-8084**

---

# Membership Matters

*By Gary Schwieger*

No new members since the Logging Conference Show.

We are sorry to loose a couple members, they have decided not to renew at this time.

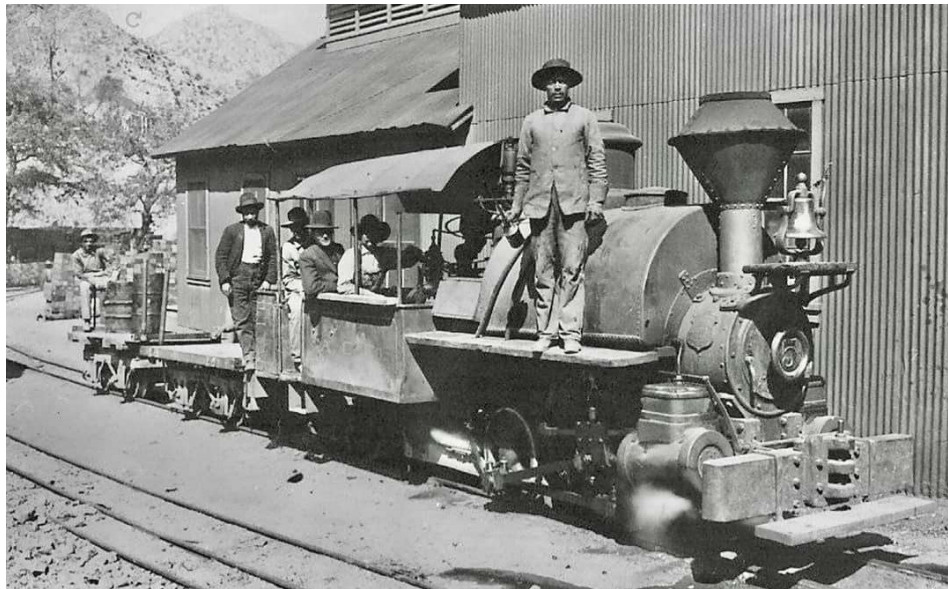
Again, I would like to thank you all for the support that you gave the WCMRRC. We had three shows in 31 days.

Set ups, run time and tear downs went very well as we set some records for the time spent taking the layouts sown. Job **WELL DONE.**

If you know of anybody that is interested in model railroading, WCMRRC is he place to be. We are one of the few clubs that have junior members as young as 5 years old. Let us build the foundation for the next generation.

Gary Schwieger

Membership Chair



# Life as the Son of a Gandy Dancer Part 1 of 2

By Bruce Duncan

Ever wonder what it was like growing up a child of a gandy dancer nearly a century ago? My dad, William, or as family and friends called him Bill, was the son of a gandy dancer. Wikipedia describes a gandy dancer as a slang term used for early railroad workers in the United States, more formally referred to as "section hands", who laid and maintained railroad tracks in the years before machines did the work. That was my grand dad, John. He was first a section hand, then a section foreman working for multiple railroads from Montana to Washington and then down through Oregon and finally reaching California. All in all he worked for 23 railroads. Bill would be born to my grandparents John and Hazel, with the help of a Mexican midwife, in November 1929. This took place in the upstairs of the Southern Pacific section house at Mott, California, just north of Dunsmuir, where the family was living at the time.

Now gandy dancers like most railroad employees, worked on a seniority system. Seniority mattered in choosing where you worked. Someone could bump you out of your location with seniority. Like wise, you could bump out someone with less seniority. This led to a very unpredictable home life. Bill would end up moving 22 times in 18 years from birth to high school graduation. During this time John made an effort to get his family to Dunsmuir when he could since it was the hub of Siskiyou County in the early half of the 20<sup>th</sup> century. Bumping in and out though was a way of life.

Bill would be in Mott until March 1933. His only real childhood memory was watching the large steam locomotives from the second floor of the depot puffing through 8' snow banks on each side of the tracks. He said the snow came right up to eaves of the first floor of the depot. But he would move on to Castella in Shasta County. With little



memory of this home he would move just 10 months later in January 1934 to Roseville in Placer County. That home was just a month as he found himself in San Francisco. Another month passed and his dad was bumped to Floriston, in Nevada County, where Bill would enter school. Bill would find stability for almost three years living in the Southern Pacific depot and attending 1<sup>st</sup>, 2<sup>nd</sup> and 3<sup>rd</sup> grades at Floriston Elementary. He has many memories from Floriston including watching his older brother Edd ski down the main street of Floriston through the street tunnel under the railroad track only to come out the other side with a broken leg, as there was no snow in the tunnel. Edd had to be put on the next available train and taken to the hospital in Reno. Another memory was playing "Buck Rogers" with his younger brother Lyle. They would "rocket" his "clothesline" MK-24 Venus Duo-Destroyer rocket ship back and forth on their mother's clothesline. The toy had little wheels in the upper rocket just for this use. It was one of just a few items that survived from my dad's youth. I would play with it many years later as a kid. More recently I restored the paint job and repaired the tail fin. It now sits as the centerpiece of the park on my train layout. But, Bill's home life stability in Floriston came to an end in January 1937 when John was able to bump the family to Dunsmuir in Siskiyou County. **Part 2 see next month's newsletter.**



Photo - Bill's "Buck Rogers" clothesline toy now on my train layout - 10 Mar 2024

Photo - Floriston, gandy dancers in motorcar on tracks bottom center of photo. Tunnel under tracks into town left bottom of photo - Jun 1963

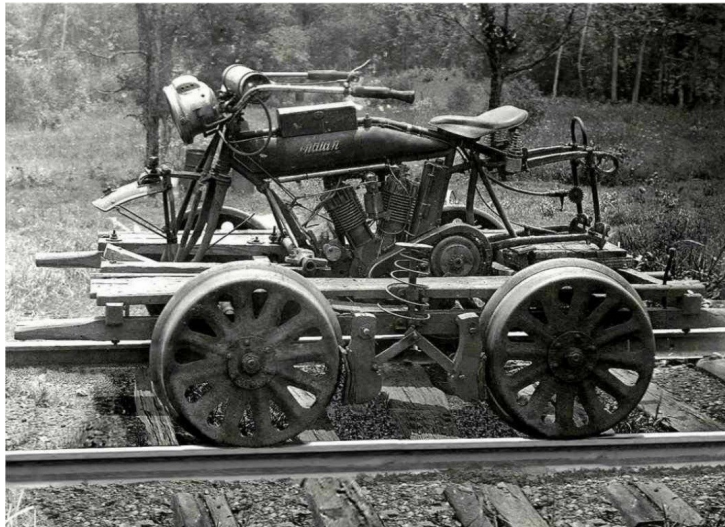
Photo - Duncan six children, back l-r John Jr, Patricia, Edward, front l-r Bill, Constance, Lyle at the Southern Pacific Depot, Floriston, California - 1936



## T-SHIRTS & HATS

We have a good selection of T-Shirts and Hats. Contact Greg Kent 541-554-6812, [gregkent@comcast.net](mailto:gregkent@comcast.net). Before club meeting and I will bring them.

**"Have cash? Will sell!"**



**Modeling  
Ideas**



### STORAGE...STORAGE...STORAGE

We are still in need of members (5 to 6) that can store boxes of magazines for club functions give away.

We also need someone (1) to store the club tables and table cloths.

See Greg Kent at club meeting.

# WHAT'S NEW

---

Already April, where has the time gone?

We will have a membership roster available at the April meeting for those who do not have email address. For those that have an email address, you will receive your copy via email.

Final figures for the Swap Meet and Train Show will be presented to the members at the April meeting. Along with that, we will have a debriefing meeting to review all aspects of the Swap Meet and Train Show to find out where we can do better. We were very good and had a lot of positive feedback for the 2024 event.

After the Benton County Fair in 2024, we have openings for show chairpersons beginning with the Valley River Show in 2025 and all following shows. If you are interested, please consider the job. We will be happy to help you along the way.

The Lane County Fair begins with set up on July 22<sup>nd</sup> and 23<sup>rd</sup> with run time through July 28<sup>th</sup>, 2024 with tear down on that night. On July 29<sup>th</sup>, we will load our layout into the trailer to transport to Corvallis and the Benton County Fair. Set up for the Benton County Fair begins on July 29<sup>th</sup> through 30<sup>th</sup>, with the Fair running July 31<sup>st</sup> through August 3<sup>rd</sup>, 2024. Tear down for the Benton County Fair is August 4<sup>th</sup>, 2024.

Please mark your calendars for those dates because we will need your help.

Again, consider becoming a show chairperson for our shows. The first to say yes will have their choice of show to chair.

See you at the April 13<sup>th</sup>, 2024 meeting.

Gary Schwieger

# Contest of the Month 2023

April - Steam Engine (ANY)

---

May - Trackside Business One (1)  
Structure

September - Vehicle Model RR  
Any Scale

June - Gondola or Open Top Hopper  
with Load

October - Single Dome Tank Car

July - Short Train not to exceed 5  
pieces

November - Maintenance of Way  
Equipment or Cars

August - Caboose

December - Diesel Locomotive

---

*The winner of the contest of the Month receives a  
\$5.00 Gift card for Eugene Toy & Hobby*



**Willamette Cascade Model Railroad Club Says Thank You To:**  
Eugene Toy & Hobby – Alan and Andrew Agerter  
32 E 11<sup>th</sup> Ave. Eugene, OR 97401  
www.eugenetoyandhobby.com (541) 344-2117  
Thank You For All Of Your Support For Our Club!

---

## Election Results

President: **Walt Mulford**

Vice President: **Milton Campbell**

SR Board: **Greg Kent, Gary Schwieger, Gary Decker**

JR Board: **Asa Showalter**



# TEMPLE'S TRAINS & THINGS

BUY-SELL-CONSIGNMENTS

Lee Temple, Owner

eBay user name: temples-trains-and-things

(541) 954-4917

ttandt@ram-mail.com

PO BOX 41267 Eugene, OR 97404



---

## March's Model Contest

*Winning Entries*

Keller Krotuiski



Alen Sirotek



Submissions are accepted for the Newsletter by email to  
[garyandbeckyd@gmail.com](mailto:garyandbeckyd@gmail.com) ***Dead line is the end of the previous month!***

# Club Officials

## Elected Officers:

President: [Walt Mulford](#)

Vice President: [Milton Campbell](#)

Senior Members at Large:

[Greg Kent](#), [Gary Decker](#), [Gary Schwieger](#)

Junior Member at Large: [Asa Showalter](#)

## Appointed Positions:

Modular Design Show Chair: [Mike Larson](#)

Modular Committee: [Jim Saville](#), [Gary Schwieger](#), [Greg Kent](#), [Noah Russell](#),  
[Philip Fitzer](#), [Milton Campbell](#), [Walt Mulford](#).

Secretary: [Joe Rademacher](#)

News Letter Editor: [Gary Decker & Milton Campbell](#)

Communication Committee: [Gary Decker](#), [Milton Campbell](#), [Gill Hulin](#),  
[Thomas Olson](#).

Show Chair: [Gary Schwieger](#)

Clinic Chairs: [Lee Temple & Noah Russell](#)

Membership Chair: [Gary Schwieger](#)

Treasurer: [Gary Decker](#)

Sergeant-at-Arms: [Martin Tighe](#)

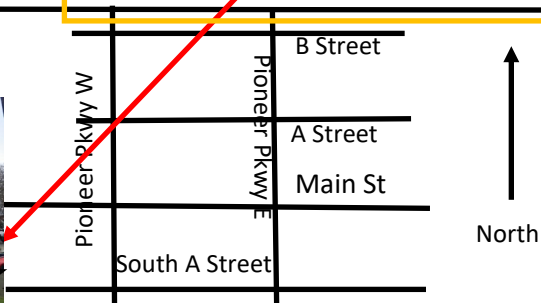
Web Master: [Milton Campbell](#), [Gary Decker](#), [Rod Minarik](#)

Refreshment Chair: [Charlie Lange](#)

Prize Drawings: [Greg Kent](#)

## Springfield Depot Freight Room

101 South A Street , Springfield, Oregon



# Run Schedule-April 2024

**April 13<sup>th</sup>** Informal breakfast at Brails Cafe-1689 Willamette St, Eugene at the Corner of 17th & Willamette. Arrive by 9:00 a.m. everyone goes Dutch and buys their own breakfast. Afterwards go to Eugene, Toy& Hobby 32 East 11th and pick up a few items you may need for your modeling purposes, pay on lay a way etc.

**April 13<sup>th</sup>** WCMRRC [Springfield Depot](#) *See Map* Open for Sales at 5:00 pm with the Business Meeting Starting at 7:00pm  
**See you there!**

**May 11<sup>th</sup>** WCMRRC [Springfield Depot](#) *See Map* Open for Sales at 5:00 pm with the Business Meeting Starting at 7:00pm

**June 8<sup>th</sup>** WCMRRC [Springfield Depot](#) *See Map* Open for Sales at 5:00 pm with the Business Meeting Starting at 7:00pm

**July 13<sup>th</sup>** WCMRRC [Springfield Depot](#) *See Map* Open for Sales at 5:00 pm with the Business Meeting Starting at 7:00pm

**July 22<sup>nd</sup> - July 29<sup>th</sup>** Lane County Fair

**July 29<sup>th</sup> - August 4<sup>th</sup>** Benton County Fair

**August 10<sup>th</sup>** WCMRRC [Springfield Depot](#) *See Map* Open for Sales at 5:00 pm with the Business Meeting Starting at 7:00pm

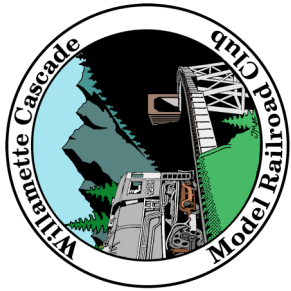
**September 10<sup>th</sup>** WCMRRC [Springfield Depot](#) *See Map* Open for Sales at 5:00 pm with the Business Meeting Starting at 7:00pm

---

## **Notice:**

All sellers are limited to only one table, due to the limited space At the Meetings!

**TABLE PRICE: \$5.00 - 1/2 TABLE \$3.00 PAYABLE TO  
THE PRIZE DRAWING COMMITTEE**



WCMRRC, Inc.  
c/o Gary Decker  
PO Box 23601  
Eugene, OR 97402

