

Volume Seventeen

Issue Three



Willamette Cascade Model Railroad Club

"Pride of the Tunnel Country" *Inc.*

www.wcmrrc.com



Since 1970

(541) 525 9404

"Pride of the Tunnel Country"

April/May 2026

Milton Campbell, Editor



P O Box 23601
Eugene, OR 97402

Conductors Comments

By Walt Mulford, President

So whatcha workin' on? I mean besides general upkeep on locos and cars. A toy-like loco by Mehano, that has been reproduced as a beautiful model by Rapido, is what's on the work bench for me. It is an Alco C415. My goodness, the difference between a toy and a model is significant. Therein lies the challenge. Reinforcing the plastic chassis, different trucks which lead to different bolsters, can motor with flywheels, some body work-you get the idea. The parts being fabricated are from my supply of styrene and brass that have accumulated over the years. This locomotive was purchased at our 2025 swap meet. It's taken me this long to work up the courage to get this project out of the box and onto the workbench. Part of the time spent was to confirm in my mind that the C415 was really going to be part of my roster. When finally that decision was made to include it the C415 was going to be the newest loco on the roster. HMMM. that bothered me. So, I "unretired" my Alco C424's. Now my roster seems cohesive.

Over the years my interest in locos and cars has changed. At first, it was any piece of rolling stock in the steam-diesel transition era. Now I have a more narrowed-down idea of what is pleasing to the eye. This whole process started when I was 6. Now I'm 75.67.

My home layout is in its' 3rd rendition. So there's work to do there. Stop using it as a storage unit for one. With the change routing there is wiring to be done. Scenery to be upgraded or put in new. This has been going on since 1987. Even had an open house or two. Hope to again in the near future. At my age far future is out of the question.

So whatcha got goin'? Hopefully "playing trains" is your emphasis because fun is the key that brings us together as a club.

Walt M.



Engineers Dispatch



The next batch of Baltic Birch Plywood has been purchased for the T-Trak layout. \$396 worth. There will be a cutting party next Friday.

We will be cutting 4 corners, 2 triples, and 10 doubles. Many of these will be showing up at the Lane County Fair. Due to declining interest in running the larger scales, we will have two HO layouts at the Lane County Fair. Our ever present analog layout and our new digital table top layout.

Ken Warner will be supplying 14 feet of new trackage and scenery for the analog layout that is quite bold. Something you may not have seen before in standard NMRA layouts.

It is going to be a busy summer as we continue to build, and detail our new modules.

Also in T-Trak news, John Krotulski is donating a Digi-trax LocoNet WiFi interface so folks can use their cell-phone to run their train.



Membership Matters

Welcome Finn Seavey, our newest junior member who joined the club at the March meeting.

Finn's interests are in HO scale model railroading and in military tanks.

Please introduced yourself to Finn as our junior members are the key to our club future.

It was a very good evening at our May 9 meeting. We have two new prospective members that will join next month, two that will reinstate their membership and several renewal memberships that were paid.

Welcome new members, thank you to those that have reinstated their membership and thank you to the rest of our membership.

We have a great club.

Mark your calendars for the Lane and Benton County Fairs and sign-ups for set up and tear down and run times at our June and July meetings.

Gary Schwieger
Membership Chair

TEMPLE'S TRAINS & THINGS

BUY-SELL-CONSIGNMENTS

Lee Temple, Owner

eBay user name: temples-trains-and-things

(541) 954-4917

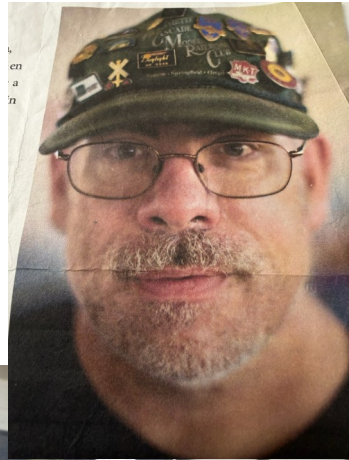
templestrainsandthings@yahoo.com

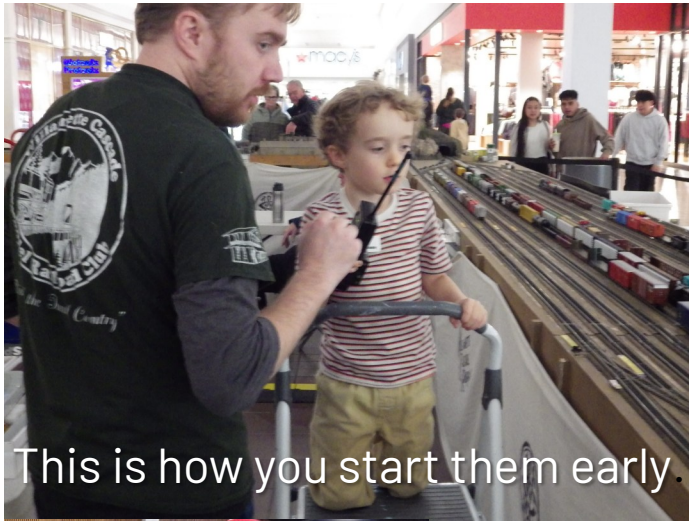
PO BOX 41267 Eugene, OR 97404



Martin Tighe

1969—2025





This is how you start them early.



This is how you give away magazines at a show so we don't have to pack them up again.

DBK HOBBY

Collector, Buy, Sell
Model Trains,
Accessories Etc.

Dale Knox
dbkhobby@gmail.com

P.O. Box 456 Elmira Or. 97437
DBK Hobby on Face Book and Instagram

541-603-8084



Contest of the Month 2026

May– Railroad Station

June– Steam Engine with 6 Drivers
or less

July– Logging Equipment, Fire
fighting

August– Short Train, not to exceed
5 pieces

September– Boxcar

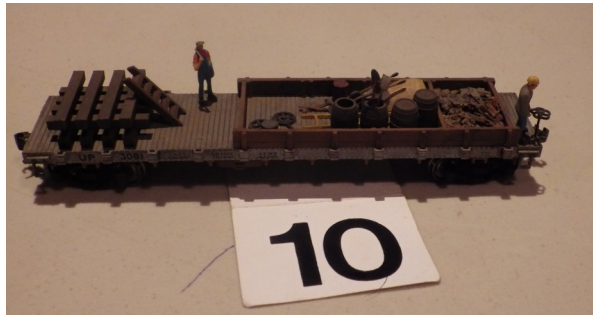
October– Wood Products car or

load with name

November– Steam Engine over 6
Drivers

December– Gondola or open top
hopper with load

*The winner of the model of the
Month contest receives a a \$5 bill
or a \$10 gift card for Eugene Toy
and Hobby*



March Model of the Month:
Maintenance Of Way equipment or
cars; or log car

Winner:

Neal Zoumbukos

Neal Zoumbukos is in declining health and is in a care facility. Dale Knox entered this model on his behalf.

The gift card was donated by Dale to junior member

Willamette Cascade Model Railroad Club Says Thank You To:

Eugene Toy & Hobby
32 E 11th Ave. Eugene, OR 97401

www.eugenetoyandhobby.com (541) 344-2117

Thank You For All Of Your Support For Our Club!



Modular News

The Module Committee is working at Greg Kent's house to overhaul two of the 90 corners. They are meeting on Monday and Wednesday evenings from 6:00 to 9:00 PM and on Saturday afternoons.

Ball Park corner is getting massive rework to install a contiguous back track. The baseball diamond scene has been carefully removed and preserved. The wing is being removed, the mountain has been opened up revealing a pre-existing tunnel that will be used for the back track. Wiring for the module has been inspected, the barrier strips were found to be adequate for the load and the mainline buss is at full club specifications. A back track buss is being added. The parallel back track will also be wired so as to be useful.



Mining Camp corner is getting its back track installed as well. A wiring inspection revealed inadequate wire to carry the load. A new set of buss wires is in the works to bring it up to snuff.

If you would like to help out, please call Greg Kent at 541-554-6812. By assisting in the work, credits are earned towards run time at shows for those who are unable assist with regular set-up and tear-down.

Club Officials

Elected Officers:

President: [Walt Mulford](#)

Vice President: [Milton Campbell](#)

Senior Members at Large:

[Greg Kent](#), [Udie Bauer](#), [Sam Larsen](#)

Junior Member at Large: [Tyler Volpe](#)

Appointed Positions:

Modular Chair: [Noah Russell](#)

Modular Committee: [Noah Russell](#), [Jim Saville](#), [Gary Schwieger](#), [Greg Kent](#), [Philip Fitzer](#), [Milton Campbell](#), [Walt Mulford](#).

Secretary: [Joe Rademacher](#)

Treasurer: [Philip Anderson](#)

News Letter Editor: [Milton Campbell](#), [Duane Ambron](#)

Communication Committee: [Gary Decker](#), [Milton Campbell](#), [John Krotulski](#)

Web Masters: [Milton Campbell](#), [Gary Decker](#), [Rod Minarik](#), [John Krotulski](#)

Show Chair: **O P E N**

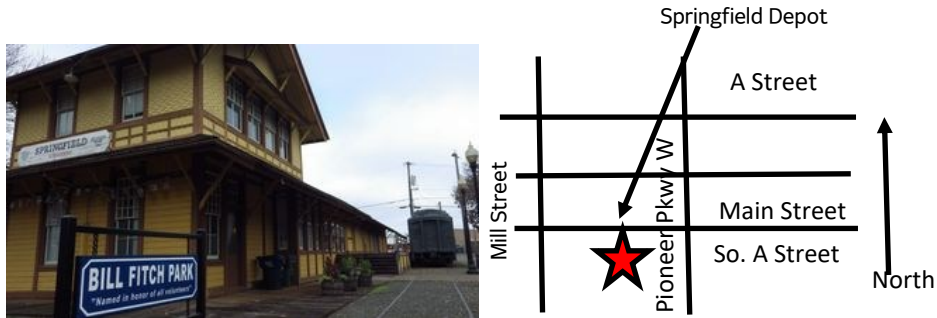
Clinic Chairs: [Ken Warner](#) & [Noah Russell](#)

Membership Chair: [Gary Schwieger](#)

Sergeant-at-Arms: [Hayden Northcutt](#)

Refreshment Chair: [Walt Mulford](#)

Prize Drawings: [Greg Kent](#)



Run Schedule-May 2026

May 9th Informal breakfast at Brails Cafe-1689 Willamette St, Eugene at the Corner of 17th & Willamette. Arrive by 9:00 a.m. everyone goes Dutch and buys their own breakfast. Afterwards go to Eugene Toy & Hobby, 32 East 11th and pick up a few items you may need for your modeling purposes, pay on lay a way etc.

May 9th WCMRRC Meeting **Springfield Depot**

June 13th WCMRRC Meeting **Springfield Depot**

July 11th WCMRRC Meeting **Springfield Depot**

July 20nd - 26th Lane County Fair and setup **Lane Events Center**

July 27th Lane County Fair pack up and drive to Benton County Fairgrounds for set-up **Lane Events Center - Benton County Fairgrounds**

July 29th– August 1st Benton County Fair **Corvallis Oregon**

August 8th WCMRRC Meeting **Springfield Depot**

September 12th WCMRRC PICNIC **To Be Determined**

October 10th WCMRRC Meeting **Springfield Depot**

November 14th WCMRRC Meeting **Springfield Depot**



Springfield
CHAMBER

Thank you to the Springfield Chamber of Commerce for the use of the Springfield Depot for our meetings.



WCMRRC, Inc.

c/o Milton E Campbell

PO Box 23601

Eugene, OR 97402

"Pride of the Flannel Country"

