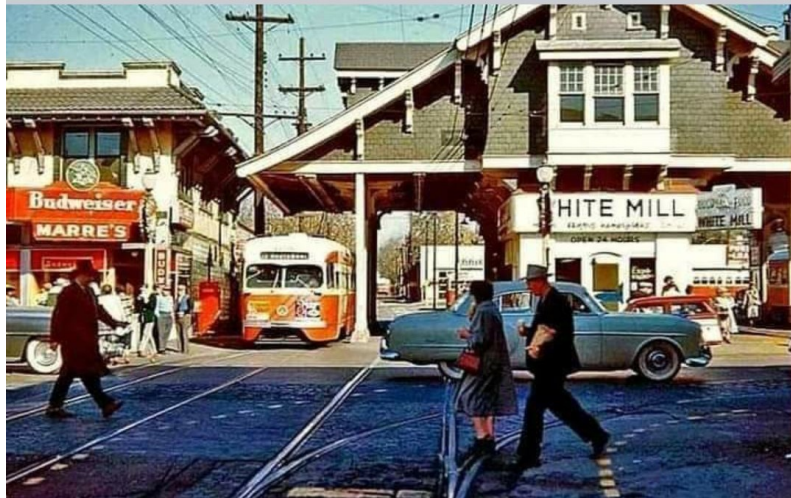


Volume Fourteen Issue Two
ELECTION EDITION



*Willamette Cascade
Model Railroad Club*

"Pride of the Tunnel Country"

Since 1970

www.wcmrrc.com



(541) 224-6638

February 2023



Conductors Comments

By Lee Temple, President

It is with some consternation that I write this letter. In am writing in regards to the O-gauge Equipment and the G-scale Equipment that the club owns.

Basically I am putting on notice that the O-gauge that the club owns (not Roger's stuff) and the G-scale train items donated by a hobby shop in Reno, Nevada are being put on hold for club shows for the future if we do not have more help.

People in the past who have helped are Noah Russell, Ron Judd, Samantha McIntosh, Martin Tighe, Lee Temple, Peter wood, Warren Sawyer, Sean Suess, Milton Campbell, Joe Rademacher, . I hope I have not left anyone off the list because if I did it was unintentional. Usually we have three to 5 people who come down to relieve us from our duties to eat or go to the bathroom. We have appreciated all who have helped us from time to time. The problem we have now are there are members who only come to club meetings and seldom if ever participate in a public show, and most everyone listed is primarily into HO scale . Some have N-scale but most of the help except for Roger Fegles do not have much O-gauge three rail nor G-scale.

When I say in the third paragraph those people will give us relief from running the layout so we can eat or go to the bathroom or they take time run a train now and then. But for the bulk of the time it is mainly Martin and I that do the set up and tear down but those mentioned in this article have also helped from time to time with tear down or set up. And we appreciate the help.

The problem we are having is not the fact that these train items were donated to the club with board approval, the problem is a perspective problem. When we do a show with two or more scales at any public show is the problem is left to two people for the bulk of the set up, tear down, and the running of trains, mainly Lee or Martin.

We had at one time the potential to have people who ran both gauges mentioned in this article but the number has dwindled mostly to Martin and I. Others have moved out of town, some members have past away over the years etc.

Being a charter member I realize all too well that we started as an HO scale modular club and that continues to be the main focus of most mem-

bers. The problem we have is putting on a show takes many to pull off well and we usually do that. My perspective is that I do not think there is another club who can put on trains of three different scales. We are very unique in that area. Most clubs focus on one scale.

That is where my perspective is wider than most as the leader of this club as President for the past 15 years. We have grown not only in membership we have the unique responsibility to run at least three scales. I do not think there is another club in the state that does what we can do. At the most recent Valley River Show (43 years in a row) we had Jim Daventport's beautiful HO scale masterpiece because of his artistic abilities to be one of the finest detailed HO scale master pieces since the club's start in 1970 and we had O gauge trains running, and we had our club owned Willamette Cascade Model HO scale modular railroad running at center court. That means for that show if everyone gets \$250 each the WCMRRC will receive a check for \$750 while other will receive only \$250. Do you know of another club that show three displays that are all from WCMRRC members, probably not.

I have asked for help in the past with the O-gauge and other than Roger Fegles having a wide variety of O gauge as well, there are a few members who have O gauge. The most common response I get is I do not care for that scale or I am not interested in that scale. That is fine no one is trying to make you give up your favorite scale. The point I am making is that is not your scale or your interest then you say not interested in helping.

I have always believed that we are a multi-scale club and even though it is not your main interest you use that as rationale not to help with the tear down or the set up because that scale you have no interest in. Many of you just boldly make that statement and that is your justification to not really help on a regular basis because you have no interest in that scale. And I am fine with that but when people are not interested in that scale they do not offer to help with set up or tear down or people say well we are here late because the O gauge or the G-scale and I want to go home.

Roger also has Thomas & Friends and many people help him even though they do not have a piece of Thomas of their own they are eager to help him. And that is fine because he has some health issues and his stamina in not as long lasting as it used to be. I think it is wonderful that and heart warming that people are willing to help Roger as we should do.

The disconcerting part for me is you are more eager to help Roger yet you say to me or Martin, no I have no interest in that scale. So though it is not intentional it seems like somewhat of a double standard if you are

understanding the point I am trying to make. I think it is wonderful you want to help Roger as that is a great support to him. He has always been a great club member.

So, the point to this whole article is this. If we can not get at least 4 people to help Martin with set up or tear down then we will no longer be bringing those scales to do shows. Board members have said make the display small, do not bring as much stuff. I had a board member notice that we were much smaller than in past years and they have commented to me and we were done before 10 . But except for a few people mentioned most people were gone when the HO scale railroad was packed up. Not one member even came down to see if we needed help getting loaded, they just left and because we were smaller at the Valley River Show we still did not get any one other than the people we have already mentioned. At the end the only people left were Jim Saville, Milton Campbell, me, and Martin. It makes us feel unappreciated and not important to the overall quality of the show.

To me that is a crime because the hobby shop donated \$10,000 of merchandise that I had to sign for by their lawyer as a donation. Warren Sawyer has donated probably as much in O-gauge and he has brought car loads of stuff in various scales and given it to junior members he knows that would appreciate it.

There is an answer to this, we actively recruit more members to join the club who love those scales. And when we have more members who want to do shows on a regular basis, we will have more people in those scales to help with the set up and tear down. In the meantime I will store the equipment in my storage units I pay for on a monthly basis until we attract more members specifically in those scales and then the problem will be solved.

Educators have always has this famous saying; it takes a village to educate children with all kinds of backgrounds, abilities etc. I feel the same about model railroading, it takes a lot of members to pull off the show we do with success over and over again. It is a team effort!



4



Off the Bench

This month we look at some small dioramas of cabooses.



Pre purchase of swap meet raffle tickets @ 5 for \$1.00 is available in advance of the swap meet in an effort to cut down on work load. There will be 10 drawings with 7 prize each. Unlike prior swap meets you do not have to be present to receive your prize. However, tickets are assigned to each prize as they are drawn from the ticket tub. Upon purchase of tickets your block of numbers will be noted with name and phone number. To order see Greg Kent at the February club meeting or call

541-554-6812. Pick up tickets at February's club meet or at door before 10:00 am Sat Feb 18.



DBK HOBBY

Collector, Buy, Sell
Model Trains,
Accessories Etc.

Dale Knox
dbkhobby@gmail.com

P.O. Box 456 Elmira Or. 97437
DBK Hobby on Face Book and Instagram

541-603-8084

Slate of Candidates

President - Walter Mulford

I was born in the Los Angeles area but moved several times during my childhood (papa was a rolling stone). My favorite place was in rural Ohio near the town of Massillon. This is the place I got my first train set, Lionel of course. Also nearby was the railroad yard of the Nickel Plate, previously Wheeling and Lake Erie. Here my father took us boys to climb on steam locomotives in the scrap line. This was in the late fifties. We got plenty dirty, but mom got some rest. After another couple of moves I landed in San Diego where I graduated from high school, started college, and last but not least, met and married "the little Mrs." (permission granted that phrase). College was finished at Humboldt State University in Arcata California with a degree in forestry. Jobs brought me to Oregon. I subsequently studied respiratory therapy which led to working for 30 years as a respiratory therapist at Good Samaritan Hospital in Corvallis. I guess bodily fluids were my passion. Who knew? After raising three children to adulthood and retiring from the hospital, "the little Mrs." and I are enjoying a more low key pace of life. I am involved with supporting middle school students who have some trouble with readin', writin', and 'rithmetic. I enjoy this immensely. My model railroad, that my father and I started in the late eighties, is still active but presently in its 3rd rendition of routing and operations.

Vice President - Milton Campbell

I was approached by members of the board at the Cottage Grove show and was asked to run for Vice President for next year. Since I accepted their nomination, I thought it might be beneficial to the members to know a little bit more about me. I am originally from Tacoma, WA.

My dad started in model railroading in the 1950's. We had an unfinished layout in the rec room over the garage. I loved dad's steam locomotives. They were plain cast metal (not brass) from Varney. An 0-4-0, a "ten wheeler" 4-6-0, and a 4-6-2. The cars were mostly wood and metal kits.

In 1970, for my 7th birthday, I received a Tyco Mantua Southern Pacific diesel locomotive that I could run. By my 13th birthday I was buying my own Athearn cars and assembling them with Kadee #5's. These were mostly BN with a few pre-merger road names thrown in. I picked up a locomotive or two along the way. Some came from Stadium Toy and Craft in Tacoma or the B&I Circus Store - Hobby Town in

Lakewood, WA. Eventually we would shop at Pacific Railway Hobbies in Lakewood as well. I have always been fascinated by the Temco (Continental Bakeries) grain export terminal on the Tacoma waterfront and have fair number of 3-bay covered hoppers for moving grain.

When I moved to Oregon 1988 to start working at KCBY, I would stop at the Village Depot in Cottage Grove or Eugene Toy and Hobby and pick up another piece here or there, growing my collection of rolling stock. I moved to KVAL in Eugene in 1993.

Now as a member of the club, I have been able to pick up locomotives for Northern Pacific, Great Northern, and Milwaukee Road. (Both my maternal grandfather and great-grandfather were blacksmiths for the Chicago, Milwaukee, St. Paul, and Pacific back in the 1910's through the 1930's.) And I have picked up more rolling stock for each of these lines.

I love being a part of this club. I don't have room for a personal layout so operating at the shows has been great fun. I have learned something from every operating session, and every show. I have framed a couple of modules and have many ideas for finishing them, and you may have heard that I have purchased the old yard. I have a couple of ideas for remodeling them and creating a container terminal and grain terminal.

**Senior Board of Directors - Greg Kent, Jim Saville,
Gary Schwieger**

Jr. Board Member - Asa Showalter



Contest of the Month 2023

February - Anything Logging (1) Piece

- | | |
|---|--|
| <p>March - Gondola or Open Top Hopper with Load</p> <p>April - Vehicle or Equipment Model RR</p> <p>May - Diesel Locomotive</p> <p>June - Trackside Structure or Bridge (12"X12" Diorama's OK)</p> <p>July - Steam Engine 6 Drivers or Less</p> <p>August - Wood Products Car or Load With Name</p> | <p>September - Caboose</p> <p>October - Short Train not to Exceed (5) Pieces</p> <p>November - Maintenance of Way Equipment or Cars</p> <p>December - Single Dome Tank Car</p> <p style="text-align: center;"><i>The winner of the contest of the Month receives a \$5.00 Gift card for Eugene Toy & Hobby</i></p> |
|---|--|

ELECTED AND APPOINTED POSITIONS

President	Clinic Chair	Swap Meet Chair
Vice President	Membership Chair	Show Chair
Senior Board (3)	Refreshment Chair	Valley River
Junior Board	Secretary	Logging Show
Treasurer	Web Master	Cottage Grove
Modular Chair	Gandy Dancer	Fairs
Newsletter Editor	Sargent at Arms	Drain

Willamette Cascade Model Railroad Club Says Thank You To:

Eugene Toy & Hobby – Alan, Andrew & Mark Agerter
 32 East 11th Ave. Eugene, OR 97401
www.eugenetoyandhobby.com • (541) 344-2117
 Thank You For All Of Your Support To Our Club!



TEMPLE'S TRAINS & THINGS

BUY-SELL-CONSIGNMENTS

Lee Temple, Owner

eBay user name: temples-trains-and-things

(541) 954-4917

ttandt@ram-mail.com

PO BOX 41267 Eugene,OR 97404



Contest of the Month Entries

1st Place - Dale Knox



Greg
Kent



Dale
Knox



Sam Larsen



Blaze Lyn- Styl



Dale Knox

COMMITTEES THAT COULD USE YOUR HELP

Swap Meet

Clinics

Finance

Communications

Shows

Web Master

Gandy Dancer

Modular

Submissions are accepted for the Newsletter by email to
garyandbeckyd@gmail.com Dead line is the end of the previous month!

Club Officials

Elected Officers:

President: Lee Temple

Vice President: Gary Decker

Senior Members at Large:

Greg Kent, Jim Saville, Gary Schwieger

Junior Member at Large: Kyle Gabba

Appointed Positions:

Modular Chair: Jim Saville

Modular Committee: Gary Schwieger, Mike Larson, Greg Kent, Noah Russell, Walt Mulford.

Secretary: Joe Rademacher

News Letter Editors: Gary Decker & Lee Temple

Communication Committee: Milton Campbell, Gill Hulin, Thomas Olson, Hayden Northcutt, Sean Suess

Show Chair: Lee Temple

Clinic Chairs: Lee Temple & Noah Russell

Membership Chair: Gary Schwieger

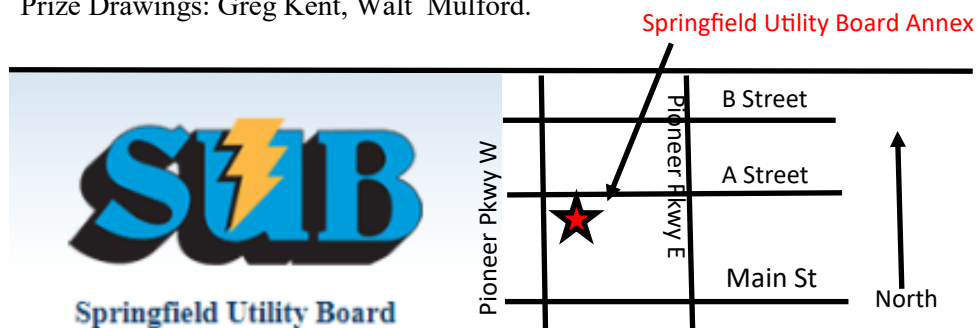
Treasurer: Lee Temple

Sargent-at-Arms: Martin Tighe

Web Master: Gary Decker (we need at least 3 members to share this duty)!

Refreshment Chair: Charlie Lange

Prize Drawings: Greg Kent, Walt Mulford.



Run Schedule-February 2023

February 11th Informal breakfast at Brails Cafe-1689 Willamette St, Eugene at the Corner of 17th & Willamette. Arrive by 9:00 a.m. everyone goes Dutch and buys their own breakfast. Afterwards go to Eugene, Toy & Hobby 32 East 11th and pick up a few items you may need for your modeling purposes, pay on lay a way etc.

February 11th **WCMRRC Springfield Utility Board Annex**
See Map Open for Sales at 5:00 pm with the Business Meeting and Voting for New Offices Starting at 7:00pm. We will be taking Nominations for Club Officers, as well as those who would like to serve on committees or serve in an appointed roll! See you there!

February 17th - 19th, 2023 **WCMRRC Swap Meet**
Start now to be ready for a
GREAT SWAP MEET!

February 24th - 26th, 2023 **Oregon Logging Conference**

Membership Matters

I just want to thank the members that have continued to support our club.

Dues are \$30.00 annually.

Plus a one time Audio/Video surcharge of \$15.00.

Gary Schwieger

Membership Chairperson

Notice:

**ALL SELLERS ARE LIMITED TO ONLY ONE TABLE, DUE
TO THE LIMITED SPACE AT THE MEETINGS!**

**TABLE PRICE: \$5.00 - 1/2 TABLE \$3.00 PAYABLE TO
THE PRIZE DRAWING COMMITTEE**



WCMRRC
c/o Gary Decker
88165 Fern Meadows Ln
Veneta, OR 97487

"Pride of the Steam Country"

