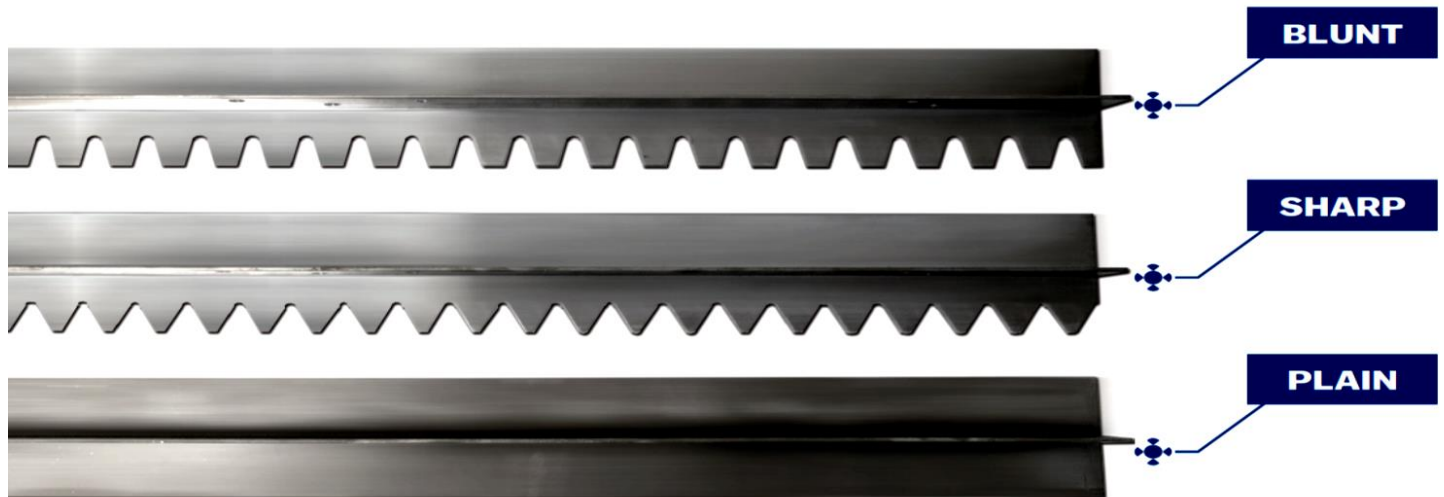




MARSHALLTOWN LUTE BLADE STYLES



Magnesium Asphalt Lute Rake

MARSHALLTOWN Magnesium Asphalt Lutes are made with a lightweight, durable magnesium head. You have your choice between our standard Lutes, Braced Lute Rakes, or Lute Rakes w/ T-Connector. All our Magnesium Asphalt Lutes blades are 3" high and come with your choice of blunt, sharp, or plain depending on your preference. You can also choose your blade size, handle material, and handle length.

Magnesium Lutes

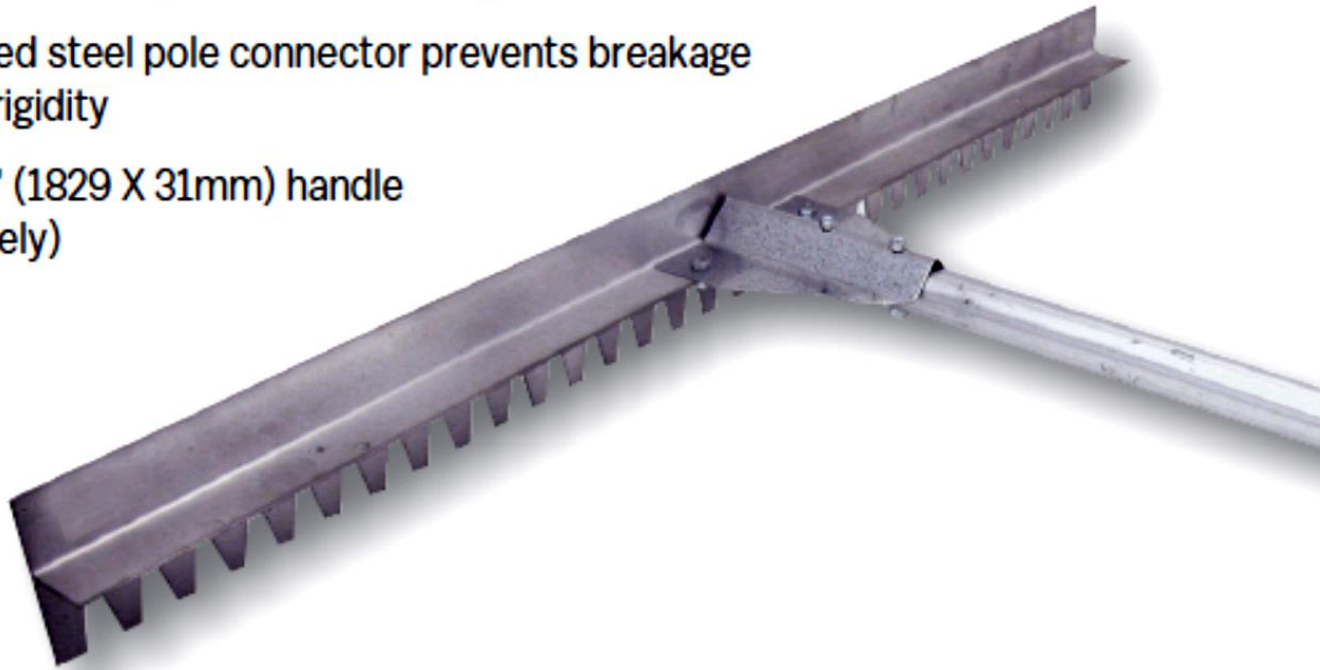
- Durable, lightweight magnesium head
- Square to round wood handle for better grip
- Used for smoothing and leveling fresh asphalt prior to compacting
- Easily replaceable blade, connector and handle





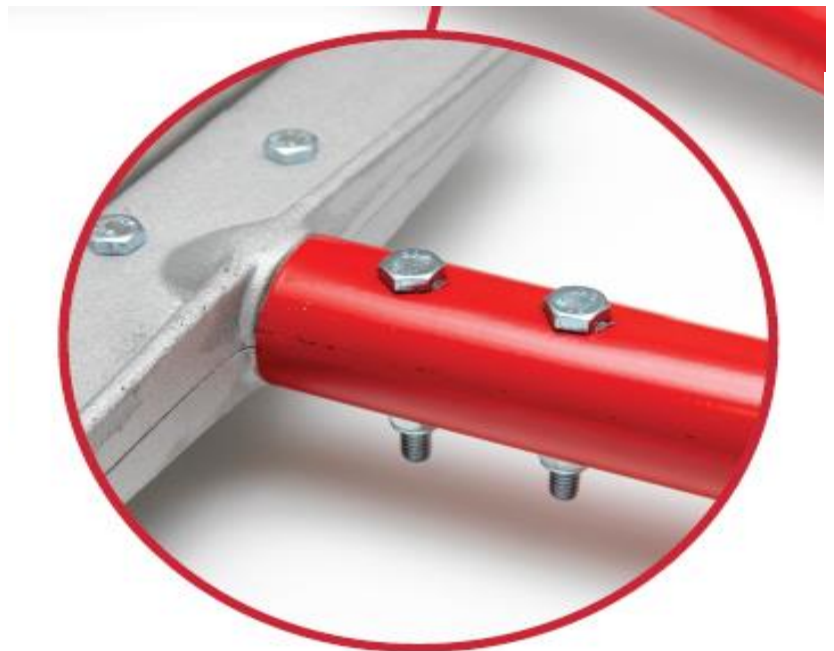
Magnesium Asphalt Rake

- Lightweight "T" section blade has blunt teeth which are designed to allow material to pass through without catching
- Rugged formed steel pole connector prevents breakage and ensures rigidity
- 839 72 X 1¹/₄" (1829 X 31mm) handle (sold separately)



Magnesium Lute Rakes with T-Connector

- Durable lightweight magnesium head
- Includes 1³/₈" (35mm) aluminum handle available in three different lengths
- All parts are easily replaceable





Braced Magnesium Lute Rakes

- Durable lightweight magnesium head
- Combination lute rake
- Gusset and metal braces with collar provide additional durability
- Aluminum handle
- All parts are easily replaceable



Lute Rakes with Wood or Fiberglass Handle

- Durable lightweight magnesium head
- Combination lute rake
- Metal brace for more durability
- All parts are easily replaceable
- Wood or fiberglass handles available



Distributor

Brewer Cote of Arizona "The Pavement Maintenance Specialists"

5226 West Missouri Avenue, Glendale Arizona 85301

www.brewercoteaz.com Tel 623-931-3728 Toll 888-931-3728 Fax 623-842-0714 sales@brewercoteaz.com