



PERMANENT PAVEMENT REPAIR MATERIAL UPM® Unique Patching Material

UPM® Permanent Pavement Repair Material is a High-Performance cold patch asphalt mix that can Be used by Municipalities, Contractors business and Home owners to repair Roadways, Parking Lots, Jogging Bicycle and Walking paths, Driveways and other Asphalt and Concrete pavements.

Benefits / Features

Year-round use • Ready to use – No primer or tacking materials are required prior to patching • Permanent repairs- UPM® mix repairs have been proven* to out-last the surrounding pavement (*Strategic highway research program (SHRP-H 106 Report plus other independent studies.) • All Weather Application – Permanent repairs under wet or dry conditions. • Seasonal grades – Specific formulations to accommodate year-round patching requirements. • Easy to use – Pour or shovel UPM® mix into the pothole using the 3 – step method.

Distributor



BREWER COTE OF ARIZONA INC® 'THE PAVEMENT MAINTENANCE SPECIALISTS'
5226 W. MISSOURI AVENUE, GLENDALE, ARIZONA 85301



PERMANENT PAVEMENT REPAIR MATERIAL UPM® Unique Patching Material

Limitations

Not intended for applications on unsound pavements. For overlay applications at least one test section should be prepared to evaluate the suitability of the materials and procedures. Do not Sealcoat over new patches for at least 30 days to allow for proper curing.

Surface preparation

The area to be prepared should be cleaned and swept to remove loose fragments and debris from the area providing a solid base and clean edges.

For Best Results

Use the appropriate grade of UPM® mix for the ambient temperature at the time the mix is being applied. Compact the mix before opening to traffic.

Placement

Shovel or pour UPM® mix into hole and level out 25% higher than desired depth to allow for compaction. Compact UPM® mix with hand tamper, roller or plate compactor. For deep Potholes apply and compact UPM® mix in separate 2" layers.

Coverage

10 lbs. of UPM® mix covers 1 sq. ft, 1" deep. Coverage rate @ 2" Deep

Unit	Square Feet
1 Ton	100
660 lb. Drum	33
60 lb. Pail	3
50 lb. Bag	2.5
24 lb. Pail	1.2

UPM® Mix Seasonal Grade

Winter
Spring/ Fall
Summer
Extreme Summer

To be applied when outdoor temperature is

40° F and Below / 4° C and Below
40° F To 60° F / 4° to 16° C
60° F to 80° F / 16° to 27° C
80° F and Above / 27° C and Above

Shelf Life

Two years if stored in an unopened pail or drum. 18 mos. In unopened Bag. Bulk tonnage varies.



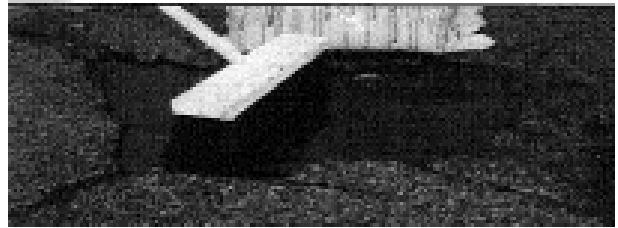
PERMANENT PAVEMENT REPAIR MATERIAL UPM® Unique Patching Material

BETTER MATERIAL = BETTER RESULTS

Instructions

Step #1

Using a Broom or Leaf Blower, Clean Out large chunks and loose debris from hole. UPM® works best if the material is applied to a solid surrounding pavement and good base.



Step #2

Apply keeping Material contained in the hole. If the hole is deeper than 3" install & compaction lifts. Material should be 25% higher than surface before compaction.



Step #3

Compact with Hand Tamper, Truck or Car Tires, Plate Compactors or Rollers. After compaction, dust surface with sand or cement powder to "Set" UPM® quicker. This reduces tackiness for immediate pedestrian traffic.



Questions and Answers

Why is UPM® Better?

UPM® is State approved & used by State DOT's all across the U.S. All raw materials are tested by Our State-of-the-Art-Laboratory to ensure Quality & Guaranteed Performance

Can UPM® be used for Concrete repairs?

Yes, UPM® is ideal for Concrete pavements, including Roadways, Driveways, Bridge Decks and Parking Lots.

What is the Coverage Rate?

Approximately 10 lbs. of UPM® will cover 1 Sq./ Ft - 1" Deep

Are there Seasonal Grades of UPM®?

Yes! UPM® is Available in Winter, Spring fall, and Summer Formulas. These are designed for the Optimal Performance during the various temperatures of application

Can UPM® be used in Wet Holes?

Wet or Dry, UPM® is designed to perform in any weather, any temperature

What is the Shelf Life of the Bags?

1 Year

How does UPM® "Set Up" ?

Upon Compaction, the aggregate and asphalt interlock making the patch stable and ready for immediate traffic. Road dust and dirt will crust the top of the patch. The patch will slowly cure below the crust remaining flexible during expansion and contraction.

Is A Primer or Tack Coat needed before applying UPM®?

No! UPM® is self-priming. The Proprietary liquid Asphalt gives tenacious binding properties to the hole

Distributor

BREWER COTE OF ARIZONA THE PAVEMENT MAINTENANCE SPECIALISTS'

5226 W. Missouri Avenue Glendale Arizona 85301

WWW.BREWERCOTEAZ.COM TEL. 623-931-3728 TOLL 888-931-3728 FAX 623-842-0714 SALES@BREWERCOTEAZ.COM