

INSULATE YOUR HOME WITH US



INSULATION &  
SPRAY FOAM  
DIRECT

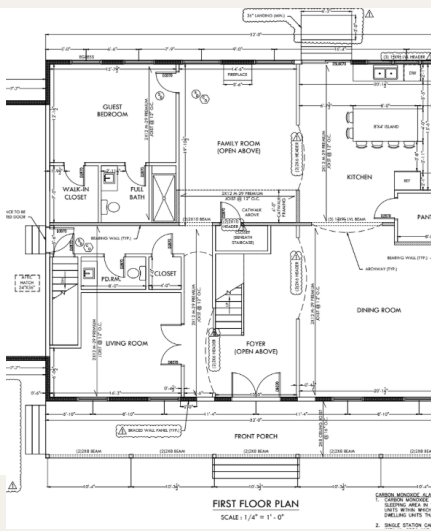
# *Table of* CONTENTS

02	Print Takeoffs + Insulation Spec Price
03	Airseal and Firestop
04	Fiberglass Batt Installation
05	Spray Foam in Homes
06	Spray Foam Garages/Warehouse
07	Crawlspace Encapsulation
08	Under slab/floor Spray Foam
09	Basement Blanket Insulation
10	Blown cellulose/Fiberglass
11	Blower door test & Duct Leakage Test

---



# PRINT TAKE OFFS AND SPECS -PRICING



All homes and jobs start with a set of plans. When potential customers need a price before breaking ground we offering estimates based on pdf prints or basic measurements.

We create insulation specs based on customer provided information or based on the climate zone and code regulations for that area.

If needed PA Alternative code requirements and submittals can be made free of charge.

Our pricing and payment terms are on a per customer basis and do our best to fit all needs.

Insulation And Spray Foam Direct LLC PA10577

**By: Kals**  
1557 Route 507  
Greentown PA, PA 18426

Customer:

Homeowner

**PROPOSAL**

DATE

6/24/2025

Proposal Number:

2001285

Job Location:

Brand Name

City/State/Zip Code

Name/Job #	Payment Terms	Date:	Sales Rep.
	50% Start, 50% Finish	6/24/2025	BR
Description of Work-Supply And Install			
<div><div>Item/Material:</div><div>Roof R-21 Kraft Faced Fiberglass (57.41 Sq Ft) Per Bag 2x6 Exterior Walls R-49 Kraft Faced Fiberglass (32.00 Sq Ft) Per Bag Flat exposed ceiling that can be blown in R-49 with no vapor retarder 19 sq ft per bag Flat exposed ceiling Vents 10"x4" Single per piece Shims labor Install Furlans along exterior walls in wiring and plumbing penetrations per code. Also install furlans in wiring and plumbing penetrations between doors per code. Spaces Larger than 7" Stick one rock wool in per code. Gasket bottom plates, top plates, double studs and tripple studs along exterior walls per 2000 sq ft house + Gap in sheathing on exterior walls where sheathing comes together. Install Low Temperature Window &amp; Door Foam into gaps around windows and doors FUEL SURCHARGE: Garage OC-R-21 ME23 R-21 Kraft Faced Fiberglass (57.41 Sq Ft) Per Bag 2x6 Garage exterior walls R-39 with no vapor retarder (37.2 sq ft per bag) Garage flat exposed ceiling Basement OC-R-30 ME24 R-30 Kraft Faced Fiberglass (59.46 SQ Ft) Per Bag Basement rim and box joint glass towards inside R-31 FPM Discont Prices valid for 30 days and subject to change based on manufacture increases and availability</div></div>			

Terms & Conditions: (1) Workmanship, Completion, Liability and property damage Insurance furnished per our standard (2) No back charges or pre-paid expenses charges are to be made against other unless specifically agreed upon (3) This proposal is an offer between the parties therein and all other verbal agreements are superseded by this contract (4) Insulation & Spray Foam Direct LLC will not be responsible for any future building issues, as it is recommended to have each piece covered with pipe insulation. (5) The Thermal Envelope is warranted and the building code inspection passes. Insulation & Spray Foam Direct LLC is not responsible beyond that point. The material is warranted by the manufacturer. (6) This contract must be signed by both parties before any work is performed. Customer must agree to the terms and conditions and the late payment terms. In the event a verbal authorization is granted to start work, this contract goes into effect.

Insulation And Spray Foam Direct LLC

1557 Route 507  
Greentown PA, PA 18426  
(610) 444-1111  
www.insulationandsprayfoamdirect.com

Perfect Planning makes perfect budgets for customers

02

# STEP 1 AIRSEALING AND FIRESTOP



Once Rough inspection is scheduled. We install fire foam into wiring/plumbing/hvac penetrations for draftstop codes.

Gaps in the sheathing along with where the sheathing starts and stops get fire rated foam to stop air penetrations as best as possible. All seams get gasket foam to prevent air without causing issues with the drywall.

Low expansion window and door foam is placed carefully on all windows and doors.

Premium air sealing can be done if requested with closed cell spray foam.



# FIBERGLASS BATT

---

## Fiberglass is cheaper and efficient

All of our fiberglass products are sourced from distribution or manufactures. This allows us to pass savings on to you! Some of our products we supply and install cheaper than the cost to buy at the local hardware/ big box store!



---

## Grade A Installs

All of our installers are profesionally trained and have a minimum of 3 years installation experience before they go to a job by themselves. This allows them to install fiberglass batts with minimal compression and less voids.

*Images of our  
quality installs from  
custom homes in the  
area*

# SPRAY FOAM



1

## Full house spray foam

100% closed cell in all areas of the home. The most expensive option, but the most efficient one also. 5" R-38 in the roof and 3" R-21 in the exterior walls. Solves any issue that fiberglass may have.



2

## Conditioned attic storage areas.

Many new homes have unfinished attic storage areas. These areas can be decked and used to climate control utilities or create amazing storage areas in homes.



3

## Basements

The Poconos are known for moist and damp basements. Fiberglass traps moisture and causes issues. Closed Cell Spray foam seals the concrete and prevents moisture from penetrating into the basement

# *Custom* GARAGES



## Pole Barns

Converting Pole Barns into clean climate controlled areas. Some of our customers even convert them into barndominiums for extra living space. Closed cell foam stiffens up the metal exterior. Many say they don't even need AC anymore

---



## Pump House/ Sheds

If its a she shed/ pump house/ dog house/ or any climate controlled shed. We spray them so you can finish them off and use them as a comfortable space.

---



## Metal Building Kits

These kits on average are the cheapest way to get a garage. However, they are very flimsy and act like giant toaster ovens in the summer. Before we sprayed this the roof deck was 118 degrees. Now its 70 degrees. Possibly cooler once the new insulated garage door gets installed.

# CRAWLSPACE ENCAPSULATION

---

From start to finish we gut, clean, dry, seal, and insulate crawlspaces.

Step 1: Remove existing

Fiberglass and debris

Step 2: Lay down 16-20 mil  
crawlspaceliner to seal the floor

Step 3: Dry the crawlspace with a  
commercial dehumidifier

Step 4: Spray foam the exterior  
walls to seal in the poly, insulate  
the walls and seal the rim joist



---

## Clean conditioned spaced under your home

Frozen pipes/ Poorly performing heating systems/ moisture damage/ cold floors. All these can be solved by addressing the crawlspace and basement of your home. It isn't cheap. However, its a long lasting solution to almost any home in the poconos.

# UNDER SLAB FLOOR SPRAY OVERHANG FOAM



The areas we can't get to later and radon prevention

Some jobs do not allow access later on to spray. These include under slab areas and sunroom floors.

We make early trips to home just to spray these sections to ensure that they are well insulated. Its a high end option but its a 100% solution to these areas.

Under slab foam is a premium product. However, it is continuous insulation and provides an approved radon barrier for basements.



# BASEMENT BLANKET INSULATION

---

Basement Blanket installed  
directly onto the concrete

Fiberglass Insulation laminated to  
a fire rated and moisture rated  
white vinyl to be attached directly  
to the concrete.

R- Values vary from R-10 to R-19



---

## Creating a conditioned basement

At half the price of spray foam basement blankets allow you to pass code and allow the basement as a conditioned space. For Future use you can frame directly on top of this blanket and add more fiberglass in the framing cavity to add future value to the home.

# BLOWN CELLULOSE FIBERGLASS



## Blown in Cellulose

Recycled newspapers or cardboard. We offer cellulose material as unbelievably low prices compared to fiberglass or spray foam. Many home owners prefer cellulose since its treated to deter pests and for fire rated structures.

---



## Blown Fiberglass

Clean and effective. Blown fiberglass is cheaper than batt insulation and often helps with thermal bridging. Such as in the picture where it covers the entire attic floor with continuous insulation.

---



## Custom drill and fill

Some homes unfortunately do not allow access to some areas do to the framing. We drill small 2 inch holes and dense pack them with loose fiberglass or cellulose to make sure the homes don't have cold spots and can pass code. (Ex. blocked off rim joist access. Drilled from floor above)

# BLOWER DOOR & DUCT BLASTER TEST

## Blower door Test

A blower door test is done to check for drafts in the home. We depressurize the home to see the differential noted by the meter.

This is required by IRC 2018 on all homes in Pennsylvania to be under 3 ach 50.

Standard price: \$300.00



## Duct Leakage Test

A duct test is done to check the total leakage in the hvac system within the ducts. As per IRC 2018

The total leakage shall be less than or equal to 4 cubic feet per minute per 100 sqft of conditioned floor area with the air handler installed.

Standard price: \$300.00

### BUILDING PERFORMANCE INSTITUTE, INC

107 Hermes Road, Suite 210  
Malta, NY 12020  
(877) 274-1274  
www.bpi.org



**Richard Kalimootoo**

BPI ID#: 5039331

**CERTIFIED PROFESSIONAL**



(SEE REVERSE SIDE FOR DESIGNATIONS AND EXPIRATION DATES)

# PICTURES OF OUR WORK



# PICTURES OF OUR WORK



# NOTES

---

---

---

---

---

---

---

---

---

---

---

# INSULATION & SPRAY FOAM DIRECT

*let's get in touch*

1557 Route 507, Greentown PA 18426  
570-656-6639

[www.insulationfoamdirect.com](http://www.insulationfoamdirect.com)

[kalimootoorak@gmail.com](mailto:kalimootoorak@gmail.com)

<https://www.facebook.com/InsulationSprayFoamDirect>