

PRACTICE AREAS

CESAR SOLIS PARK | MAP LAYOUT | SPRING 2024 SEASON

PARK DESIGN CONCEPT

Cesar Solis community park is a twenty-acre joint-use park located adjacent to the proposed San Ysidro Subdiv District #6 elementary school in the new community of Ocean View Hills.

Proposed Phase I amenities within the park and the joint-use area include parking, two softball fields with soccer field overlay, open lawn areas, four tennis courts, playground, picnic and overlook areas with two shade structures, and playgrounds for all ages. The playground will include equipment for the traditional 2-12 year old areas including a climbing rock.

Proposed Phase II amenities of the park include a future gym/recreation center.

Proposed Phase III amenities for the park include a future community aquatic center.

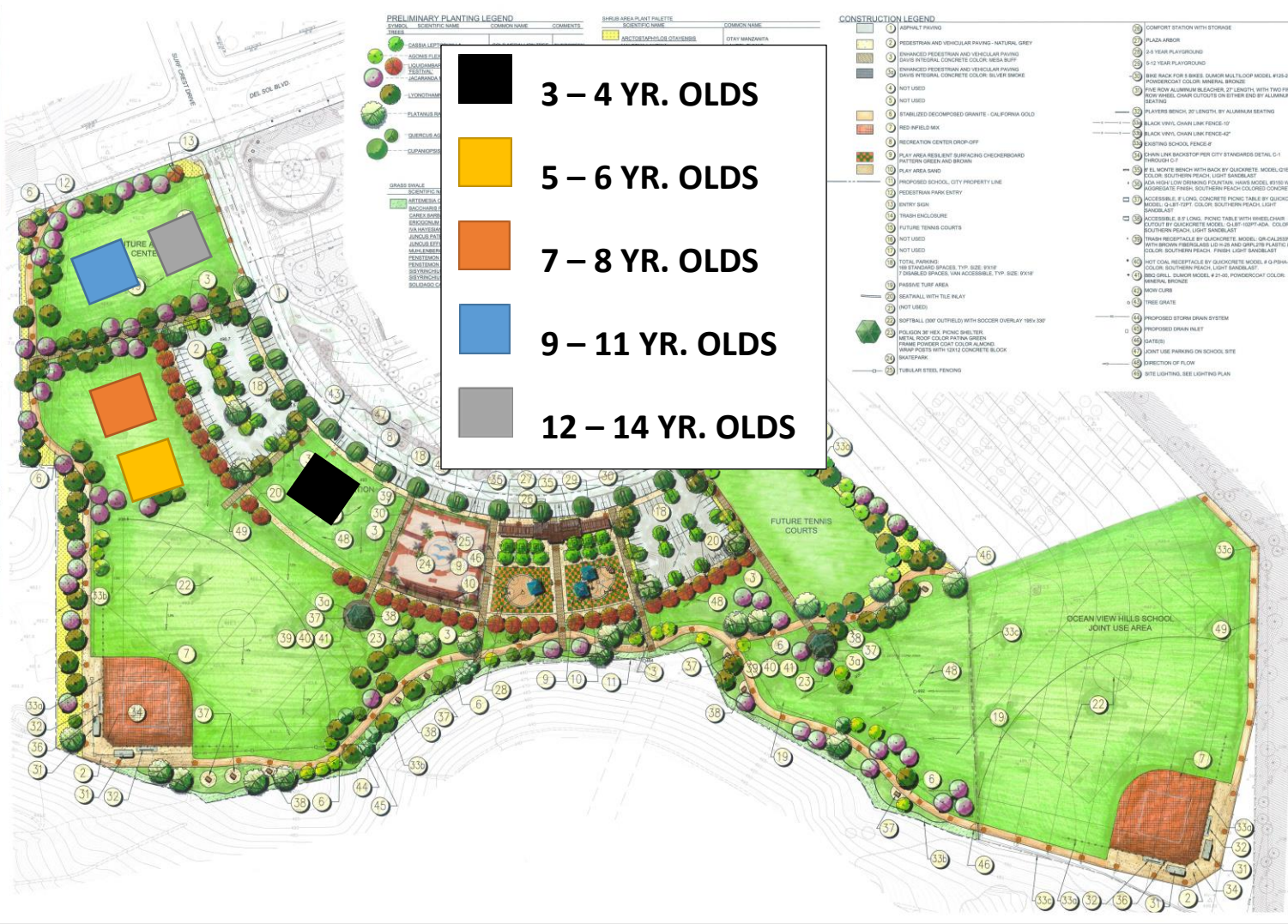
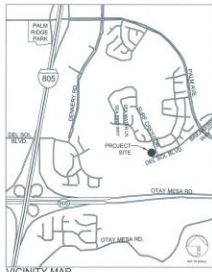
All recreational facilities will be equipped with sports field lighting for extended evening play.

The design conceptualized for the park was derived from the existing pattern of the entry drive surrounding the central core of the existing school. A tree lined median encircling the park site providing a walking, exercise and sports amenity at the core of the park. This core is supplemented by pedestrian ways and walkways that follow the passive areas of the park and more active areas of the park.

The tree lined median provides a sense of scale and purpose as it helps to link the educational and recreational components of the park. Quotes from various students and sports venues will be placed into the lining the median to inspire the park users to think about the link between the educational and recreational aspects of the park.

Parking will be accommodated on the park site.

Requirements	Park Site	School Site
Space per 2000 sq ft/line building	50	-
17,000 sq ft	80	-
1 space per 175 sq foot surface @	-	30
13,000 for top and driveway pool	30	30
1 space per 100 sq ft	130	130
Proposed:	Park Site	School Site
Phase 1 Total	176	63
Project Grand Total	226	



PRELIMINARY PLANTING LEGEND

SYMBOL	SCIENTIFIC NAME	COMMON NAME	COMMENTS	SHRUB AREA PLANT PALETTE	SCIENTIFIC NAME	COMMON NAME
	CARYA LAEVIS				LIGUSTRUM LUCIDUM	OLIVE
	ACER GLABRUM				LIGUSTRUM LUCIDUM	OLIVE
	LONICERA XYLOSTEUM				LIGUSTRUM LUCIDUM	OLIVE
	LONICERA XYLOSTEUM				LIGUSTRUM LUCIDUM	OLIVE
	QUERCUS AGRIFOLIA				LIGUSTRUM LUCIDUM	OLIVE
	QUERCUS AGRIFOLIA				LIGUSTRUM LUCIDUM	OLIVE
	QUERCUS AGRIFOLIA				LIGUSTRUM LUCIDUM	OLIVE
	QUERCUS AGRIFOLIA				LIGUSTRUM LUCIDUM	OLIVE

CONSTRUCTION LEGEND

- 1 ASPHALT PAVING
- 2 PEDESTRIAN AND VEHICULAR PAVING - NATURAL GREY
- 3 ENHANCED PEDESTRIAN AND VEHICULAR PAVING (SHAPE INTERNAL CONCRETE COLOR MEDIA SURF)
- 4 ENHANCED PEDESTRIAN AND VEHICULAR PAVING (SHAPE INTERNAL CONCRETE COLOR SILVER SHIM)
- 5 NOT USED
- 6 NOT USED
- 7 ESTABLISHED DECOMPOSED GRANITE - CALIFORNIA GOLD
- 8 REFIELD MIX
- 9 RECREATION CENTER DROP-OFF
- 10 PLAY AREA RESILIENT SURFACE/CHECKERBOARD PATTERN GREEN AND BROWN
- 11 PLAY AREA SAND
- 12 PROPOSED SCHOOL CITY PROPERTY LINE
- 13 PEDESTRIAN PARK ENTRY
- 14 ENTRY SIGN
- 15 TRASH ENCLOSURE
- 16 FUTURE TENNIS COURTS
- 17 NOT USED
- 18 NOT USED
- 19 TOTAL PARKING
- 20 STANDARD SPACES, TYP. SIZE 8'X18'
- 21 DIAMETER SPACES, VAN ACCESSIBLE, TYP. SIZE 8'X16'
- 22 PARKING TURF AREA
- 23 SEPTICAL WITH TILE RAINLY
- 24 HOT LINED
- 25 SOFTBALL (OFT) OUTFIELD WITH SOFTENER OVERLAY 1800 30"
- 26 POLYURETHANE FENCING SHELLER
- 27 METAL TOP COLOR WITH GREEN FRAME POWDER COAT COLOR ALUMINOUM FINISH POPE WITH 100 1/2 CONCRETE BLOCK SKATEPARK
- 28 TUBULAR STEEL FENCING
- 29 COMFORT STATION WITH STORAGE
- 30 PLAZA AREA
- 31 5-10 YEAR PLAYGROUND
- 32 BIRD RACK FOR 8 BIRD QUARRY MULTI-SPECIES MODEL P828L PONDSCAPE COLOR: MINERAL BRONZE
- 33 FIVE TON ALUMINUM BENCHES, 37" LENGTH WITH TWO FIRST AID PANEL CHAIR CUTOFFS ON EITHER END BY ALUMINUM SEATING
- 34 PLASTIC BENCH 30" LENGTH BY ALUMINUM SEATING
- 35 BLACK VINYL CHAIN LINK FENCE-10'
- 36 BLACK VINYL CHAIN LINK FENCE-42'
- 37 EXISTING SCHOOL FENCE
- 38 CHAIN LINK BACKSTOP PER CITY STANDARDS DETAIL C-1 THROUGH C-7
- 39 EL MONTE BENCH WITH BACK BY CONCRETE MODEL 6268M COLOR: SOUTHERN PEACH LIGHT SANDLAST
- 40 ADA HIGH LOW BENCHING FOUR-TIER MODEL 8388 WITH EN ADJUSTABLE FRAME: SOUTHERN PEACH COLORED CONCRETE
- 41 ACCESSIBLE 8' LONG CONCRETE POND TABLE BY CONCRETE MODEL G-10T OPT. COLOR: SOUTHERN PEACH LIGHT SANDLAST
- 42 ACCESSIBLE 8' LONG POND TABLE WITH WOODEN CHAIRS EXCEPT BY CONCRETE MODEL G-10T-15-A COLOR: SOUTHERN PEACH LIGHT SANDLAST
- 43 TRASH RECEPTACLE BY CONCRETE MODEL OR CALIFORNIA MATH BROWN FIBERGLASS (L) 10" AND 10" UNITS PLASTIC LINER COLOR: SOUTHERN PEACH PINK LIGHT SANDLAST
- 44 HOT COOL RECEPTACLE BY CONCRETE MODEL G-10-15-A-12 COLOR: SOUTHERN PEACH LIGHT SANDLAST
- 45 MISC DRILL DUMPER MODEL # 21-01, PONDSCAPE COLOR: MINERAL BRONZE
- 46 MISC CLIPS
- 47 TREE GRATE
- 48 PROPOSED STORM DRAIN SYSTEM
- 49 PROPOSED DRAIN PILE
- 50 (S) (S) (S)
- 51 JOINT USE PARKING ON SCHOOL SITE
- 52 DIRECTION OF FLOW
- 53 SITE LIGHTING SEE LIGHTING PLAN

COUNCIL DISTRICT # _____ COMMUNITY PLAN AREA: CITY WIDE

CITY	ACTION	REFERENCE DOCUMENTS	DATE	DATE	DATE
11-18-2016	PUBLIC HEARING/APPROVAL	PUBLIC APPROVAL	11/18/16	11/18/16	11/18/16
09-10-2016	CITY COUNCIL APPROVAL	CITY COUNCIL APPROVAL	09/10/16	09/10/16	09/10/16
08-10-2016	CITY COUNCIL APPROVAL	CITY COUNCIL APPROVAL	08/10/16	08/10/16	08/10/16

ITEM	QUANTITY	TYPE	AMOUNT	PRICE	QUANTITY
TOTAL SITE	504 AC	CONCRETE	108.00 SF	PERMISSIBLE ASPHALT	108.00 SF
IMPROVED AREA	504 AC	PERMISSIBLE PAVEMENT	4.00 SF	PERMISSIBLE ASPHALT	4.00 SF
PLANT	15.0 AC	TOT LOT	3.00 SF	PERMISSIBLE ASPHALT	3.00 SF
BRUSH BELL	1.0 AC	GRASS FRANK	10.00 SF	GRASS FRANKING STALLS STD. 10.00 SF	10.00 SF
RESTROOM	1.000 SF	CLUB FRANK	1.000 SF	CLUB FRANKING STALLS STD. 10.00 SF	1.000 SF
STORAGE BLDG.	500 SF	WELLIES	1.000 SF	GRASS FRANKING STALLS STD. 10.00 SF	1.000 SF

CITY OF SAN DIEGO PARK AND RECREATION DEPARTMENT

THE GENERAL DEVELOPMENT PLAN
CESAR SOLIS COMMUNITY