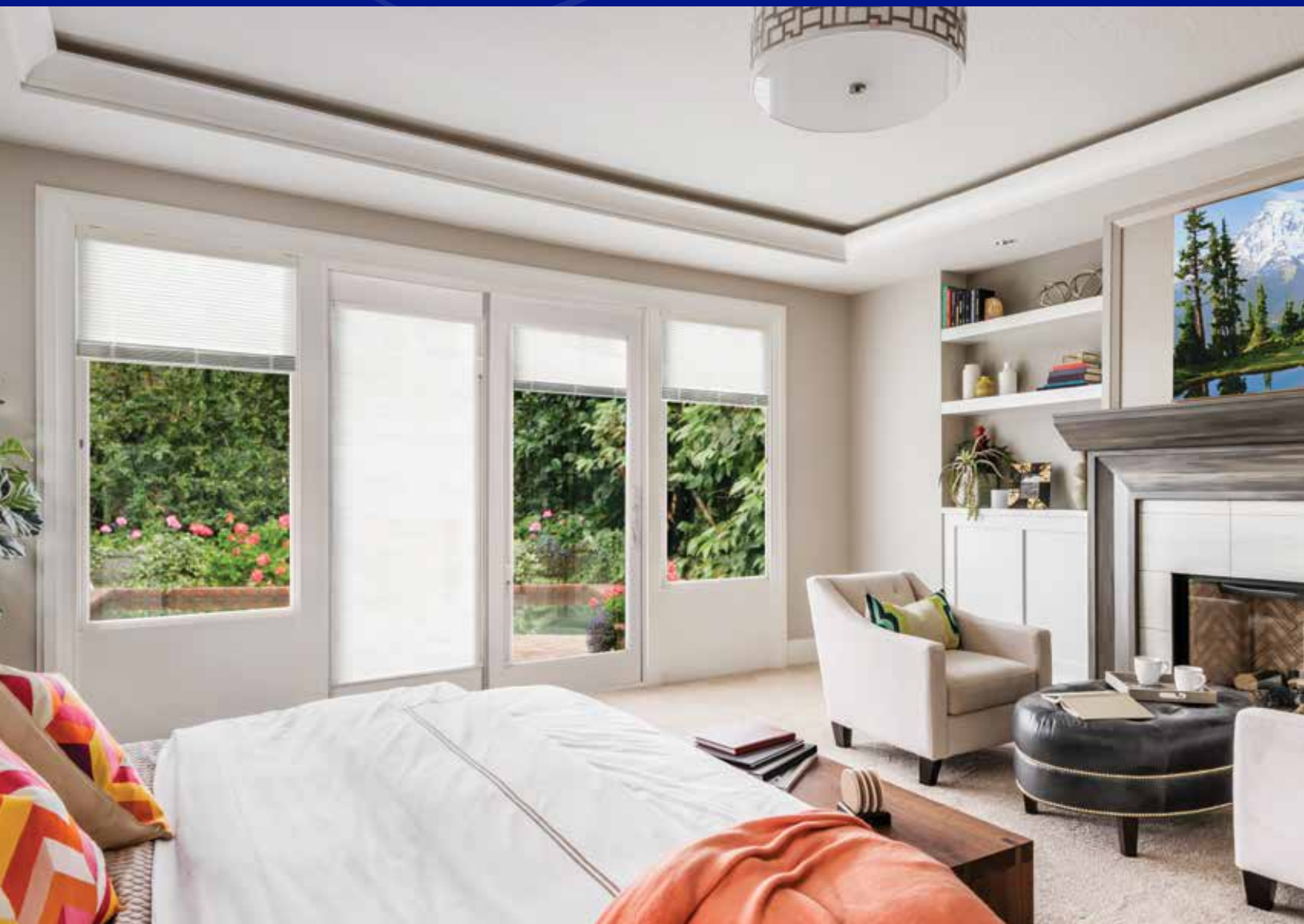


PATENTED  
TECHNOLOGY FOR  
SUPERIOR PERFORMANCE

# Integrated Mini Blinds

*on Sliding Patio Doors*



*A beautifully convenient way to control light.*

**Alside**<sup>®</sup>

# Integrated Mini Blinds on Select Sliding Patio Doors

*Your Alside Patio Door now offers an added option for even greater style and convenience – integrated mini blinds. This best-in-class design innovation keeps the blinds free from dust and damage, while allowing lift and tilt operation with easy fingertip control.*

## Clean-line design, heavy-duty construction.

Alside Patio Doors with Integrated Mini Blinds feature exclusive technology for superior style and long-lasting performance.

## Precision-engineered for superior functionality:

- Convenient sunlight and privacy control – simply lift and tilt the blinds with a single operator
- Blinds remain virtually dust-free in a sealed insulated glass unit
- Self-leveling bottom rail allows blinds to be re-leveled if they become unbalanced
- Integral cordless blinds eliminate the risk of children or pets getting entangled in cords

## Reliable performance and peace of mind:

- No-slip gear belt for smooth lift and tilt operation
- Single cord-winding shaft ensures improved “stack,” which prevents the blinds from coming in contact with the glass surface
- Integrated mini blinds are backed by an **industry-leading 20-year limited warranty\*** for added peace of mind
- Rigorously tested at 290,000+ cycles, far exceeding industry standard of 3,500 cycles
- Withstands use of doors opening and closing

## Energy-efficient options:

- ENERGY STAR® qualified options available
- **ClimaTech® ThermD LT** – Double-paned insulated glass unit with one pane of Low-E glass and stainless steel Intercept® Spacer
- **ClimaTech ThermD LT SF** – Double-paned insulated glass unit with two panes of Low-E glass (surface 2 and 4) and stainless steel Intercept Spacer

## Availability By Door Size and Style (6' 8" door height only)

Door Size	6400 Series/6500 Series			6100 Series
	Contemporary	Classic	French	
5-Foot	•	•	•	•
6-Foot	•	•	•	•
6.25-Foot (Wisconsin)	•	•	•	•
8-Foot	–	•	–	–
9-Foot	•	•	•	•
12-Foot (3-Panel)	–	•	–	–
12-Foot (4-Panel)	•	•	•	•



Dedicated to continuous quality improvement, this prestigious certification recognizes Alside's window plant operations for superior quality management in production of consistently high-quality, energy-efficient windows and patio doors. Alside is one of only a few U.S. window manufacturers to earn this world-class quality distinction.



*Integrated mini blinds will feature a white blind.*



Alside 3773 State Road Cuyahoga Falls, Ohio 44223  
1-800-922-6009 [www.alside.com](http://www.alside.com)

©2019 Alside. Alside and ClimaTech are registered trademarks of AMI. Intercept is a registered trademark of Vitro. ENERGY STAR name and logo are registered U.S. marks and are owned by the U.S. government. †Patents held by Intigral, Inc. \*For a copy of the written product warranty please visit [www.alside.com/support/warranties/](http://www.alside.com/support/warranties/) or contact your Alside Sales Representative. All specifications and designs subject to change without notice. Printed in USA 11/19 2.5M/OP 75-2833-01

