

THE SOUTH CAROLINA CHESS ASSOCIATION is the official state chess organization for South Carolina, recognized and affiliated by the United States Chess Federation. The SCCA sponsors the annual South Carolina Championships, the S. C. High School Team Tournament, the S. C. Junior Championships, and other competitions. SCCA NEWS, official organ of the SCCA, is published quarterly and sent to all members.

SCCA officers for 1973-1974 are as follows:

President: Mr. J. M. Smith, 611 DuPre Dr., Spartanburg, SC 29302.
Vice-President: Mr. James Millen, 709 First Ave., Hartsville, SC 29550
Secretary: Mr. Charles E. Braun, 7 Winthrop Dr., Aiken, SC 29801
Treasurer: Mr. Harold Kelley, 811 Rhododendron Pl. SE, Aiken, SC 29801
Editor, SCCA NEWS: Dr. M. Lee Hyder, 33 Longwood Dr., Aiken, SC 29801.
Games Editor: Mr. Braun. High School Chess Director: Mr. Smith.

Contributions of all kinds to SCCA NEWS are welcomed.

SCCA DUES: \$3 for adults, \$2 for juniors under 19. Send to Mr. Braun.

- 12 -

SCCA NEWS

Published quarterly by
S. C. Chess Association at
33 Longwood Dr.
Aiken, SC 29801

SCCA NEWS

SPRING 1974

VOLUME VIII

NUMBER 2

KORCHNOI DEFEATS MECKING 3-1 IN AUGUSTA MATCH

International Grandmaster Viktor Korchnoi advanced to the semi-finals of the World Championship Candidates Competition with a 3-1 victory over his young Brazilian opponent, Henrique Mecking, in Augusta, Ga. in February. There were nine draws in the closely contested match.

Surviving a probably lost position in the first game, Korchnoi took the lead in the match by outplaying Mecking in a wild time scramble in the fifth game. In the seventh Mecking again got the better of it with the black pieces, but then followed a weak sealed move with weaker play in the adjournment session to give Korchnoi a commanding 2-0 lead in the match that was to go to the first to win three games. For a while in the eighth game it appeared that the match was over, but it was now Korchnoi's turn to let the win slip away, arriving in an endgame that was hopelessly drawn despite his extra pawn. After the marathon three-session ninth game--which came within seven moves of being the first master game in many years to call up the fifty-move rule--came two draws and then Mecking's best moment. In the twelfth game, playing the exchange variation of the Ruy Lopez, Mecking attacked and found a clever combination that gained him a pawn and ultimately the game. Emboldened, he continued attacking in the thirteenth game--gained the advantage--and then lost it all as both players hastened to meet the time control.

Korchnoi went on to tour Washington, New York, and Chicago before returning to Russia to prepare for his match with Tigran Petrosian. Mecking stayed in Augusta some time after the match. Just before he left, he sought out freelance writer Bill Dodgen (the Technical Director for the match) and gave him a long interview, complaining about the FIDE playoff system, Korchnoi's behavior during the match, and the general unfairness of having to compete against the Russians. Despite Mecking's feelings, everyone else involved in the match seemed reasonably pleased, and the general feeling was that the debut of international chess in the South was generally successful.

More sidelights and some of the games from the match are on the inside pages of this issue.

SOUTH CAROLINA JUNIOR CHAMPIONSHIP CANCELLED

The South Carolina Junior Championship was called off when no one showed up except the two registrars and the tournament director.

CABANISS WINS SNOWSTORM SPECIAL ON TIE BREAK

Steve Cabaniss scored 4½ points, beat James Hughey on the tie break, and won the Second Snowstorm Special in Charleston from a field of 27 competitors. Despite the fact that the event was played on the anniversary of the Great Snowstorm, it didn't snow (but no one was very surprised!)

Other prize winners included Hank Dangerfield (3rd) and Mike Fisher (4th) --each scored 4-1. There was an 8-way tie for 5th. J. W. Cabaniss was top B, Steve Deaton was top C, Keith Hunley top D, and Mike Abercrombie top E. David Causey was best Unrated on tie-break ahead of Audie DuPuis. And Harue Blanton was the top lady player.

Joan Schlich reports that it was a very pleasant tournament, and credits this in part to putting the wall charts, and free coffee, in the skittles room.

THIRD ANNUAL NORTH AUGUSTA WINTER CHESS FESTIVAL

Report by Bill Dodgen

The third Annual North Augusta Winter Chess Festival was played on Saturday, Feb. 23rd, at the North Augusta Recreation Dept., with 27 participants in the rated sections and 5 in an unrated section.

An added attraction was provided as International Grandmaster Henrique Mecking of Brazil made a 45-minute appearance to meet the players and sign autographs. Mecking, who lost to Viktor Korchnoi in the Augusta Candidates match (described elsewhere in this issue) was very relaxed and in good spirits as he wandered around the playing room and chatted with various participants who had finished their first round games. In fact this writer was playing a fast game with Dan Hagler, and after glancing for just a second at the board Henrique laughed and informed me my position was hopeless and that I should resign the game. (He was right.)

Directors for the event were Bill Dodgen and Frank Simpson.

Results were as follows:

Section A: Frank Simpson 2, Ken Yost 1½, Harry Bell 1½, Gerald Knighton, Sr., 1.
 Section B: Jon Standahl and Steve Wall 2 each, Robert Holley and Ray Wood 1 each.
 Section C: Roland Tew 3, Billy Clifford, D. C. Kirkley, and Robert Ducate 1 each.
 Section D: Jim Gayle and Charles McGahee 2½ each, Joseph Widener 1, Robert Stephens 0.
 Section E: Gary Cumpson 3, Ray Neill 2, Gerald Knighton, Jr., 1, Art Stewart 0.
 Section F: Dan Hagler 2, Warren Johnson 1, Jan Dabrowski 0.
 Section G: Poppy Cumpson 3, Marilyn McGahee 2, Bo Hagler 1, Jay Larsen 0.
 Unrated Section: Robert L. Murray, Jr., 3½-1½, Dave Geeter 2½-1½, Geoffrey Goddard and Mark Terren 1 each, Roger Goddard 0.

GOOD GRIEF! AUGUSTA-NORTH AUGUSTA BEATS AIKEN!

After numerous tries, the Augusta-North Augusta club finally took possession of the coveted Match Trophy by handing the Aiken team a 10-6 defeat. The North Augusta group cleverly scored its first point by staging the event in such an obscure location that one Aikenite couldn't find it, and went on from there to win handily. Although as usual the A-NA team scored very well on the low boards, they also turned in a respectable performance at the top: Frank Simpson drew Lee Hyder on board one, Bob Martens beat Robert Phillips on board three, and Robert Holley downed Henry Hudak on board five.

Results of other games are given below, with the Aiken players listed first. An early rematch is anticipated.

Braun 1, Sayin 0; F. X. McGahee 1, Sanchez 0; Wall 1, Knighton, Sr., 0; Waterhouse 1, Yost 0; Wood 1, Standahl 1; Kelley 0(F) Dodgen 1; Turnier 0, Clifford 1; Gayle 0, Tew 1; Charles McGahee 0, Eaton 1; Rideout 0, Hagler 1; Marilyn McGahee 0, Carris 1; Gardner 1, Dabrowski 0; J. Phillips 0, Hanson 1.

THIRTY PLAY AT LOWER RICHLAND HIGH SCHOOL

The Lower Richland H. S. Chess Club held its first open tournament March 9 at LRHS with 30 participants. There were two eight-man sections and one fourteen-man section.

Charles E. Walter (2136) won first prize in Section A, while there was a three-way tie for first in Section B between Ken Cockrell (1570), Mark Simmons (1454), and David Wittschen (Unr.). There was a two-way tie for first in Section C between Charles Gilfillan (1374) and Joseph Pawlikowski (1064).

Donald Elton directed for the LRHSCC, and submitted this report.

TWENTY-EIGHT PAWN BROKERS VIE AT HARTSVILLE

In a good one-day event in December twenty-eight players took time off from the Christmas rush for a day of chess. In the highest-rated of the four seven-man sections Wm. L. McClain scored a good 3-0 and took the prize. Other section winners included James T. Kerns, Donald L. Henderson, Michael Applewhite, Robert M. Smith and Carl Beavers (tie), Ken Mann, and Billy Walters and Bob P. Wood (tie). For more details see P.

HIGH SCHOOL MATCHES

Lower Richland H. S., under the enthusiastic leadership of Don Elton, has been the leader in promoting interscholastic competition this year. Elsewhere in this issue we report the results of a survey of school chess clubs conducted by Elton, as well as information on the S. C. High School Championships in May. It seems that Lower Richland plays good chess, too: On Dec. 5 they beat Walk-In School 5-0, and on December 12 defeated Hammond Academy 3-0.

There seems to be a lack of enthusiasm for junior chess per se in South Carolina; here's hoping the interscholastic events do better!

Game 2: Mecking vs Korchnoi, January 17, 1974.

1 P-K4 P-K4 2 N-KB3 N-QB3 3 B-N5 P-QR3 4 B-R4 N-B3 5 O-O NXP
 6 P-Q4 P-QN4 7 B-N3 P-Q4 8 PXP B-K3 9 P-B3 B-K2 10 QN-Q2 O-O
 11 Q-K2 N-B4 12 N-Q4 NxB 13 N/2xN Q-Q2 14 NxN QxN 15 B-K3 B-KB4
 16 KR-Q1 Q-KN3 17 N-Q4 B-Q2 18 P-QN4 Q-K5 19 B-Q2 QxQ 20 NxB
 KR-K1 21 B-B4 P-QB3 22 N-Q4 P-QR4 23 P-QR3 PXP 24 PXP R-R5 25
 N-N3 KR-R1 26 B-K3 P-B3 27 B-Q4 PXP 28 BXP B-KB4 29 QR-B1 B-B4
 30 P-KB4 B-Q1 31 R-Q2 B-K5 32 N-B5 B-N3 33 B-Q4 BxN 34 BxB R-R7
 35 R/1-Q1 P-KR4 Agreed drawn on Korchnoi's proposal.

"WATERGATE" ENJOYS A GOOD TURNOUT

No fewer than 42 enthusiastic chessplayers gathered in Hartsville for the Hartsville Chess Club's latest one-day event, dubbed "Watergate". Thirty-two competed in rated round-robin sections, and ten in two unrated sections.

Peter G. Hudson beat out Don-Morse for the first-place trophy in the top section, and Carl Beavers' 3-0 score swept the next group. Other winners of rated sections included Larry Crawford, Stephen Deaton, Chad F. Riley, Stanley A. Benson, Jody Aycock, and Harry Lee Abrams. The unrated sections were won by Jeff Washington and Clem Layne.

FIFTEEN COMPETE IN CCI TOURNAMENT

The first USCF rated tournament ever held in the S. C. prison system took place on March 30 at the Central Correctional Institute in Columbia. Ten members of the CCI Chess Club and five players from Columbia's Palmetto Club joined in a three-round Swiss. The home club players shone: due to the necessity of making provisional pairings after some of the first-round games, it happened that no fewer than three of their number amassed perfect 3-0 scores. The victorious trio--Carroll Pruitt, Stobie Mills, and Jimmy Hill--demonstrated a high quality of play, at least at the Class "B" level.

Ironically, the players originally responsible for organizing the event could not attend. The idea had come from Mark Brodie and other members of the Manning Institution club, but they were unable to arrange transportation across Columbia for the event. But the CCI club took charge and arranged a good event. Facilities were quite adequate, and the Palmetto players report a most enjoyable event--except for their scores.

Jimmy Hill, President of the CCI Club, says he hopes to hold more such events in the future--probably on fifth Saturdays, when the visiting facility is otherwise vacant.

Lee Hyder and LeRoy Lewis directed the event.

Cross-tables of the event are as follows:

#	Player	Result by Rounds:	1	2	3	4	Total
1	W. Lloyd Milligan (P)		W15	L2	W8	W3*	3-1
2	Carroll Pruitt (CCI)		Bye	W1	W4		3-0
3	Stobie Mills (CCI)		W9	W4	W14	L1	3-0
4	Wesley Bennett (CCI)		W11	L3	L2		1-2
5	Houston Mays (CCI)		W12	W6	L7		2-1
6	Jerry Wells (CCI)		L14	L5	L9		0-3
7	Jimmy Hill (CCI)		W10	W8	W5	W14	4-0
8	Leonard Hamilton (CCI)		W13	L7	L1		1-2
9	LeRoy E. Lewis (P)		L3	L10	W6		1-2
10	Warren Kurtze (P)		L7	W9	L11		1-2
11	K. K. Chang (P)		L4	W12	W10		2-1
12	Jay Hayes (CCI)		L5	L11	L15		0-3
13	Wayne Tippet (CCI)		L8	Withdrew			0-1
14	Ken Cockrell (P)		W6	W15	L3	L7	2-2
15	Woodrow Smith (CCI)		L1	L14	W12		1-2

*An extra round was competed by several players for rating purposes.

EDITORIAL

There are two important areas where the SCCA and its members need to do more to ensure the continued success of chess in S. C. These are, first, tournament scheduling; and, second, SCCA membership.

Conflicts continue to arise in tournament scheduling, mainly because events aren't scheduled far enough in advance. The SCCA NEWS Editor can warn of conflicts on events if notified first; but typically the announcement goes to him and the USCF simultaneously. So the following procedure is suggested: First, plan your event six months in advance if at all possible. Second, send your suggested date to me before sending out any other publicity. If I know of a conflict, I'll write back at once. For additional guidance, a list of regular events is given below.

A more serious problem is that of SCCA membership. It hasn't kept pace with the growth of chess in the state, mainly because many clubs and tournament organizers are not requiring it for entrants in the events they sponsor. Costs of everything are rising, and our bank balance is going fast; we could make it up by adding members, by an increase in dues, or by cutting back on services, particularly this publication. The last two options tend to drive members out and start a downward spiral, so the first is much to be preferred. IF YOU THINK THAT THE SCCA IS IMPORTANT TO CHESS IN SOUTH CAROLINA, SEE THAT THE MEMBERS OF YOUR CLUB JOIN, AND REQUIRE MEMBERSHIP FOR THE TOURNAMENTS YOU SPONSOR.

REGULAR EVENTS

Groundhog Special, Charlotte, first weekend in Feb.
S. C. High School Championships, early May.
Coastal Empire Open, Savannah, Memorial Day weekend.
Carolinas Open, Summer, date and place vary.
Southern Open, July 4 weekend, site varies.
S. C. Championships, usually November.
Organizers should also look for conflicts with the popular one-day events in Shelby, N. C. The Edelsburg Memorial in Columbia is becoming an annual Spring event. Clubs in Columbia, Aiken, North Augusta, and Hartsville are also very active in scheduling competitions.

This issue is in a different format in hopes of reducing costs and perhaps making possible first class mailing again. Because of the very late publication date and the need to conserve costs, some material is being left out, principally items relating to the Korchnoi-Mecking match. We hope to have it and more in our next issue that will be out sometime in mid-June. The deadline is June 1.

We occasionally get inquiries concerning advertising rates. At present they are \$15 per page or \$6 per quarter-page. Enclosures can be mailed with SCCA NEWS for \$5, however we will not accept them if they will put us in a higher postage rate.

TOURNAMENT ANNOUNCEMENTS

ARTS FESTIVAL OPEN, AIKEN, APRIL 27-28. 5-SS, 40/12, Heritage Room, Farmers and Merchants Bank, Park Ave. at Laurens St. in downtown Aiken. EF \$5; SCCA membership required, other states honored. Equal cash prizes (depending on entry) to winner and to rated player who gains the most rating points. Book prizes to best unrated and best junior 18 or under. Registration: 8:30-9:30 a. m. 4/27. Rounds 10, 2, 6; 9:30, 1:30. Entries: James D. Gayle, 1007 Kerr Dr., Aiken 29801. Ed. note: This is a follow-up of a rather successful event held over five weeks of club meetings last year. This year Aiken hopes to welcome some out-of-town friends as well. As many of you know, accommodations and meals are available at moderate prices near the tournament site.

SECOND ALEX EDELSBURG MEMORIAL TOURNAMENT, CAYCE (near Columbia).

Again, a repeat of a successful 1973 event, at the same site. 4-SS, 50/2, Tremont Motor Inn, 111 Knox Abbott Dr., Cayce 29033. One section, open to all. EF, if received by 5/20: \$10, members of Palmetto CC, \$5. All EF \$2 more if paid at tournament. SCCA membership required, other states honored. 100% net of EF returned as cash prizes! Trophies to winner and top B, C, D players. (Winner 50% of prize money, Runner-up 40% of prize money.) Reg: 8-9 am 5/25; Rounds 10 am, 1:30 pm Sat.; 9 am, 1 pm Sunday. TD's: Don Elton and Ken Cockrell. Advance entries to Leroy E. Lewis, 3218 Montgomery Ave., Columbia 29205. Ph. 803-252-2239.

IN GEORGIA:

Championship Open, Atlanta. 5 Rd SS in 2 sections, sponsored by GCA. Top Georgian is state champion. at: Atlantant Hotel, Cone & Luckie Sts. EF: \$10, 8; \$2 more at door. Amateur Section restricted to players below 1600 or unrated. NS. Prizes: \$130, 80, 40, + trophies; \$60, \$30, + trophies to top three. Reg: 8:30-9:00, 5/4. Advance entries to Jared Radin, 250 Little St., Apt. 309A, Athens 30601.

May 25-27: COASTAL EMPIRE OPEN, RICHMOND HILL (NEAR SAVANNAH). 6 Rd SS, at Holiday Inn, I-95 and US 17. (Special rates, write to Box B, Richmond Hill, Ga 31224) GCA Req., other states honored. Rds. Sat: 1, 7; Sun: 12, 6; Mon. 9, 2. 3 Sections: Open: 40/2, EF \$13 before 5/18, 2\$ more later; prizes \$300, 150, 75, 25, 8 trophies. Booster: 45/2, open to players 1799 and under; EF \$10 in advance; Prizes \$100, 75, 50, 25, 7 trophies. Novice: Ratings below 1400, EF (Adv.) \$8, prizes \$40, 30, 25, 15, 7 trophies. Register 10:30-12:00 5/25. Inquire to: Dr. K. B. Raut, Rt. 2, Box 450-S, Savannah 31404.

Forthcoming, late July or early August: a major tournament in Augusta. More information next issue.

Forthcoming, in June or July: One-day tournaments in Columbia's Woodland Park. Watch for details.

BENKO EXHIBITIONS

Pal Benko, International Grandmaster and twice a World Championship Candidate, will play a simultaneous exhibition in Augusta, Ga., on Saturday, April 20, 3 p. m., at the Towers Motel. A lecture will precede the exhibition. Fees: to play, \$10, to listen to the lecture and watch, \$3. Entrants can buy Benko's book on his gambit for \$2, and may, if they choose, play either side of the Benko Gambit. The Palmetto Club of Columbia will probably host Benko on April 19.

MORE TOURNAMENT ANNOUNCEMENTS

IN NORTH CAROLINA:

Statesville Tournaments, 4/28, 5/18: At Grace Park Recreation Center, Bell St., Statesville. #3 Rd-SS in 8-man sections. \$ & \$4, Prizes \$20 each section. Reg. :9-9:30 a. m. at site. Inquiries: Chuck Howard, PO Box 12545, Charlotte 28205.

Ram IV Open, Greensboro, at UNC Student Union. 3 -SS, 45/90, EF \$3, NCCA Req. 8-man sections, trophy to winner each sect. Reg: 9-10. Ent: Dana Tabor, 1501 Granville West, Chapel Hill, NC 27514.

IN SOUTH CAROLINA

SOUTH CAROLINA HIGH SCHOOL TEAM CHAMPIONSHIP: for four man high school teams. May 11, at Recreation Center, Camden. USCF + SCCA REQ! Two or three rds. depending on entries. PLAYED UNDER S. C. HIGH SCHOOL LEAGUE AUSEPICES, each team must present proper forms demonstrating eligibility. Entries, additional information: Mr. Edward D. Bowling, Apt. 7 Palmetto Arms, Camden 29020.

SUMMER ONE-DAY TOURNAMENTS IN COLUMBIA (Palmetto Chess Club)

Summer Open-June 22 --- Moonwalk Open-July 20
Details (same for each event): 3-SS, 8 man sections (maybe one 12-man) EF \$5 by June 20, \$6 later. Prizes: \$25 first in each section, \$15 second in 12-man section. Combined EF-USCF dues for first time joining USCF: \$9 Jr., \$13 Sr. At Woodland Park Recreation Center, behind VA Hospital off US 378 in E. Columbia, S. C. Turn at signs. Register: 9-10 a. m., or in advance to Donald Elton, 3207 Berkeley Forest Dr., Columbia 29209. 40/90, Rds. 10:30, 2:30, 6:30.

WATCH FOR DETAILS NEXT ISSUE ON:

--Carolinas Open, Myrtle Beach, late June or early July.
--Region IV Non-Smokers' Championship, Augusta, Ga., July 27-28.

MORE NORTH CAROLINA (JUST IN!)

First and Second Ramada Specials, Statesville, June 22-23 and Aug. 17-18. At Ramada Inn, I-77 at US 70; details similar for each event: 5-SS, 40/90, three sections: OPEN, EF \$10 1 wk in advance, \$13 at tmt. \$\$ 1st 80+trophy, 2nd 40+trophy, trophies to top Expert, A. AMATEUR, open to all rated under 1800 or unrated, EF \$8 in advance, \$1 at tmt. \$\$ 1st 50+trophy, 2nd \$25+trophy, 3rd trophy, trophies to top B, C, Unr. Booster: Open to under 1400 or Unr. EF \$6 in advance, \$9 at tmt. \$\$ 1st 25 + trophy, 2nd 10+trophy, trophies to top D, E. NCCA req., other states honored. Ladies' trophy. Free coffee. Reg. ends 9:15 (sharp) Sat., rds. Sat. 10-2:30-7, Sun 9:15-2. Entries: Chuck Howard, PO Box 1353, Mooresville, NC 28115.

July 20, Sept. 21: First and Second Ramada Opens. Site as above; 3-SS 40/90, 8-man sections. EF\$5, NCCA, or other state membership req. \$\$ 20 for 1st in top section, \$10 & trophy for all others. Reg. ends 9:30, first rd. 10 a. m. Free coffee; entries as above.

GAMES

Edited by C. E. Braun

From the first round of the CCI Tournament: White: Stobie Mills;
Black: LeRoy Lewis; Ruy Lopez.
1 P-K4 P-K4 2 N-KB3 N-QB3 3 B-N5 P-QR3 4 B-R4 B-K2(a) 5 BxN(b) QPxN
6 NxKP Q-Q5 7 N-N4 QxP+ 8 N-K3 N-KB3 9 N-B3 Q-K3(c) 10 O-O O-O 11 P-Q3
(d) P-QN4 12 P-QR3 B-N2 13 R-K1 Q-Q2 14 P-QN3 KR-K1 15 B-N2 N-Q4 16
QNxNcPxN 17 Q-KB3 P-Q5(f) 18 QxB PxN 19 RxP Q-B1 20 Q-B3(g) B-B4
21 P-Q4 RxR 22 PxR B-N3 23 R-KB1 Q-B1(h) 24 P-QR4(i) R-Q1 25 PxP PxP
26 P-QB4 PxP 27 PxP R-Q2 28 R-R1 P-R3(j) 29 P-B5 and White won in 52
moves.
a. Unusual but not particularly bad. Usual is 4--N-B3.
b. White could try for an edge with 5 P-Q4 or transpose into standard
lines with 50-0.
c. 9--Q-N3 is best. (10 O-O? B-R6)
d. 11 R-K1 would put the heat on the Black queen.
e. Solves Black's pawn problem; better 16 N-K4.
f. 17--P-QB4 followed by P-Q5 is much stronger.
g. Now a pawn up, White should swap queens.
h. Q-K3 is more aggressive.
i. White should be swapping pieces; Black should be swapping pawns.
j. 28--P-QB4 saves the piece.

From the Lower Richland #2 Tournament: Dr. James M. Stevenson vs.
Carl T. Beavers. QP Opening. Notes by Lee Hyder.
1 P-Q4 P-KN3 2 N-KB3 B-N2 3 P-K3 P-Q4 4 P-B4 P-K3(a) 5 N-B3 N-QB3
6 B-Q3 N-K2 7 P-QR3 P-QR3 8 O-O O-O 9 P-QN4 QPxP 10 BxP P-QN4(b)
11 B-N3 B-N2 12 B-N2 N-Q4 13 N-K4(c) N/3-K2 14 N-B5 B-B3 15 QR-B1
B-Q2(d) 16 R-B2 P-QB3 17 Q-Q2 Q-B2 18 KR-B1 KR-B1 19 N-K5(e) BxN
20 PxN B-K1 21 P-K4 N-N3 22 Q-R6 B-Q2 23 R-K2 K-R1 24 R-K3 N-N1 25 Q-R4
K-N2 26 R-B3 P-R3 27 Q-N4 P-QR4 28 R-N3 R-K1 29 P-KR4 PxP 30 PxP N-B5
31 NxN QxN 32 R-Q1 Q-K2 33 BxN RxN 34 B-R3 R/1-R1 35 R-Q3 Q-B2(f)
36 Q-B4 R-Q1 37 R-Q6 R/1-R1 38 R/6-Q3 R-Q1 39 RxR QxR 40 R-KB3 Q-Q8+
41 K-R2 Q-Q2 42 Q-B1 N-K2 43 Q-KB4 N-B1 44 B-B1 P-R4 45 Q-B6+ Resigns
a. Better 4--N-KB3 with a good line of the Gruenfeld. P-K3 is too
passive.
b. The backward QBP gives Black a losing position which White exploits
(for a while).
c. Even better than NxN, which is good too.
d. Better --Q-Q3, KR moves, then B-K1.
e. Throwing away a crushing advantage that could have been exploited,
for instance, by 19 P-K4 N-KB3 20 N-K5 B-K1 21 P-B3. Now Black grad-
ually plays his way back as White's attempts to attack fail.
f. White is vulnerable. Black could play 35--P-KR4 (if 36 QxP RxN)
36 Q-K2 N-R3--freeing the N--and can likely get good play by a timely
RxB with good passed pawns compensating for the exchange.
Game 8: White-Mecking Black-Korchnoi Jan. 30, 1974
1. PQB4 PK4 2. NQB3 NKB3 3. NKB3 NB3 4. PKN3 BNS 5. BNB2 O-O 6. O-O BxN 7.
NPxB PQ3 8. PQ3 PK5 9. NQ4 PxP 10. NxB PxP 11. QxP PxN 12. BxP RN1 13. BK3
BN2 14. BxB RxB 15. PR5 PxP 16. BxP RK1 17. QRC1 QR1 18. QB4 RN7 19. KRK1
RxR+ 20. RxR QB3 21. QX4 PKR3 22. PR3 PQR4 23. QO8+ KR2 24. BQ4 NK5 25.
BK3 RB7 26. QO4 NxQB 27. BNB2 QNB 28. BxN RxB 29. PQR4 RB7 30. RKR1 PQR3
31. QN6 QO4 32. QN1 QR7 33. QXQ RxB 34. RQB1 RxP/5 35. RxP RQNS 36. RR6 PR5
37. PR4 PN3 38. KN2 KN2 39. PB3 PR4 40. KR3 RQB5 41. RR5 KB3 (adjourned)
42. PN4 (sealed move) PxP+ 43. PxP RB6+ 44. KN2 PR6 45. PR5 KN2 46. RR6 KR3
47. PxP PxP 48. RR5 KN2 49. RR6 KB2 50. KB2 PN4 51. RR5 RB7+ 52. KB3 PR7
53. RR6 KK2 54. KK4 RKB7 55. KK3 RGN7 drawn.

CROSSTABLES AND RESULTS OF THE 1973 SOUTH CAROLINA CLOSED CHAMPIONSHIPS

OPEN SECTION:

#	PLAYER	RESULTS BY ROUNDS:	1	2	3	4	5	Total	Score
1	Charles E. Walter		W7	W6	D3	W2	W8	4½-½	1st-2nd
2	Dr. Steven Shaw		W8	W10	W6	L1	L3	3-2	3rd
3	Jeffrey Smeltzer		W9	W11	D1	W7	W2	4½-½	1st-2nd
4	Charles H. Walter		L10	L8	Bye	W11	W7	2-3	
5	Raymond Potwara		L11	L9	L8	Bye	WD	1-4	
6	James E. Hughey		W12	L1	L2	W10	W9	3-2	
7	Wade F. Fisher		L1	WF	W10	L3	L4	2-3	
8	Ken Cockrell		L2	W4	W5	W9	L1	3-2	
9	Don Elton		L3	W5	W11	L8	L6	2-3	
10	R. L. Honeycutt		W4	L2	L7	L6	L11	1-4	
11	Donald Johnson		W5	L3	L9	W4	W10	3-2	
12	Tim Williams		L6	Withdrew				0	

Reserve Section:

1ST: C. Beavers (5-0)
2ND: J. M. Smith (4-1)
3RD: K. Mann (4-1)
Scoring 3½: R. Birnbaum
Scoring 3: R. Holley, P. Hart, P. Henderson, D. Futral, W. L. Kurtze
Scoring 2½: L. Alvarez, G. McManus, R. Kingsmore, S. Stankewich
Scoring 2: N. Gosnell, C. McGahee, J. Roberts, C. Kelly
Scoring 1½: J. Gayle, W. Mintz
Scoring 1: H. Browning, P. B. Lee (Total 21 Entries)

Booster Section:

1ST: David Williams, 5-0
2ND: W. Reed, 4-1
3RD: Paul Tinkler, 3½-½
Also scoring 3½: R. Holzworth, D. Hutchins
Scoring 3: M. Peebles, K. K. Chang
Scoring 2½: Donald Morse, Ronnie Scott, C. Gilfillan
Scoring 2: M. Simmons, William Besson, LeRoy Lewis, M. Hutchins, C. B. Cannon
Scoring 1: E. M. Pallares, H. Hudak
Scoring 0: B. Ducate. (Total 18 entries)

David Williams, with a rating of 1704, was one of the highest rated players in the Booster Section, and won handily. (Only three players in the Open had higher ratings.) The Reserve Section was limited to 1500 and below; the winner had only a 1300 rating and was 10th at the beginning!

RESULTS FROM THE PAWNBROKER'S OPEN, HARTSVILLE, DECEMBER 8:

Section 1: Wm. L. McClain 3, James Hughey 2, Ray Richards 1, John Guido 0.
Section 2: James T. Kerns 2½, Richard Stucker and Gregory Martin 2, John C. Bell ½.
Section 3: Donald L. Henderson 3, Jesse Hubbard 2, Joseph Pawlikowski 1, Clay Kelley 0.
Section 4: Michael Applewhite 3, John Mattis 2, David W. Duncan 1, O. D. Duckett 0.
Section 5: Robert M. Smith and Carl Beavers 2, Tom J. Davis and John S. West 1.
Section 6: Ken Mann 2½, Kenneth L. Fulbright 2, Buddy Bloom 1½, Darrel Lotz 0.
Section 7: Billy Walters and Bob P. Wood 2½, Frederick Olmsted 1, Warren Kurtze 0.

A New Feature---

THE CHARLES WALTER CHESS QUIZ

Difficult analysis for those who wish to improve their game!

In the position at right White is to move and plays:

1 e4-c5!

Problem A: (Time limit 45 min.) How would White reply to (1) 1--Ne4, (2)

1--Nf1+ 2 Kh1 Ng3+?

1--b6-b5? (1--Re2 is correct.)

2 a4-b5 Ng3-e4

Problem B: (Time limit 40 min.) How

would White reply to (1) 2--Nf1+ 3 Kh1 Ng3+, or (2) 2--Re2?

3 b5-b6 Ne4:d6

Problem C: (Time limit 35 min.) How would White reply to 3--ab: 4 cb: Qg2+?

4 c5:d6

Problem D: (Time limit 30 min.) How would White now reply to (1)

4--Re2; (2) 4--Rb8; (3) 4--ab: ; (4) 4--Bc7! ; (5) 4--Re7-c7?

4--Re7-c7! 5 b6-b7 Ka8-b8 6 d6-d7 Qg5-g3+ 7 Kh2-h1 Resigns.

Answers: next issue.

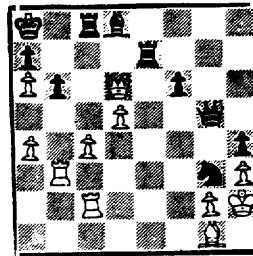
HIGH SCHOOL SURVEY

Don Elton of Lower Richland High School polled eleven high school chess groups from around the state to get information on high school chess. Here are some of the results:
The average high school club has 17 members, and about 6 of these play on the chess team. About 72% of the teams responding play interscholastic matches, and nearly all are interested in playing more. The average club has 3.6 USCF members and 2.0 SCCA members; the average USCF rating of the teams is 1189, with the highest rating being 1397 at Lower Richland. When asked about arrangements for the S. C. High School Championships, 80% thought they should be USCF rated, and 80% also favored individual prizes; 63% favor the present one-day format. Most were willing to pay as much as \$3.50 to compete.

Mr. Elton has also written a letter concerning future S. C. High School Championships, raising important questions. The pertinent excerpts follow:

I think it would be best if clubs around the state were allowed to bid for the tournament. The (accessibility of) the playing site will be a major consideration. Among the advantages of having the tournaments up for bids is the competition that will arise between clubs that are trying to outdo the other clubs in holding a more successful tournament. At last year's tournament held in Camden there were thirteen teams present. This is fine, but there are probably many other teams around the state that could be attracted to a tournament with better advertising and more awards given.

(Continued p. 11)



ELTON LETTER (Continued)

Last year it seems that the tournament was held without the permission of the S. C. High School League. This office or the Division of Educational Services at the University of South Carolina must approve all interscholastic activities in order that they be legal. Several years ago the tournament was held by Dreher High School and permission was given, but since then the tournament has been held illegally. This must be corrected in future tournaments. When the SC HS Championship is held it is also required that all teams and players meet the SC HS League eligibility requirements. There are forms to be filled out and these are available from your school principals. At the present time chess is considered as athletics and it must be treated as such. The SC HS League said that they would put no restrictions on entry fees or their use but they also said that all HS tournaments must be approved through their office.

I think that the following should be considered in bids for the SC HS Championship: City, facilities, entry fee, tournament director, USCF rated or not, prizes, and format and length of tournament.

Results of the WATERGATE tournament, Hartsville, 3/23/74:

Section A: Peter G. Hudson and Donald A. Morse 2, Charles S. Howard and Stephen Cabaniss 1.
Section B: Carl Beavers 3, Ray Richards 2, Joan H. Schlich 1, Ken Mann O.
Section C: Larry Crawford 2½, J. Fred Wilson 2, Gregory Martin 1½, Donald L. Henderson O.
Section D: Stephen Deaton 3, Ernest W. Schlich 2, Glen McGraw 1, Robert E. Norman O.
Section E: Chad F. Riley 2½, O. D. Duckett and Billy Winters 1½, Tom Davis 1.
Section F: Stanley A. Benson 2½, Clayton Turner 1½, Chris Ryan and Douglas Watson 1.
Section G: Jody Aycock, Thomas S. Odom, and Jerry Turner 2, Robert Bevis O.
Section H: Harry Lee Abrams 3, David L. Futral 2, Larry Jones 1, Michael J. Buchanan O.
Unrated Section A: Jeff Washington 3, Richard Blackmon 2, Stanley Griggs 1, David Harm O.
Unrated Section B: Clem Layne, Micky Ivy, Chris Turner, and Isaac Champagne, Jr., 2, Byron Williams 1, Jim Dozier O.

Game 7: White-Kerchnoi Black-Mecking Jan. 27, 1974

1.NKb3 Pq4 2.PKb3 Pq4 3.Nb3 Pq4 4.PK3 5.0-0 BPxP 6.KNxP BB4 7.NN3 BN3 8.PCB4 NB3 9.PNP NXP 10.NR3 0-0 11.NB4 BB2 12.NK3 QK2 13. NXP PXP 14.NK3 RQ1 15.QC2 BNS 16.KRK1 PQR4 17.BN5 PB3 18.BB4 BN3 19. QQ1 PR5 20.NB1 KR1 21.NC3 NK4 22.PQR3 NB3 23.KR1 QK3 24.RB1 QB4 25. PB3 BR6 26.PQN4 PXPep 27.QXP BR4 28.KRQ1 BXB+ 29.KXB QK3 30.PK4 NQ5 31.QXP PXP 32.QXKP CXQ 33.PXQ NK7 34.RB4 NB6 35.RQ2 NXP 36.R2QB2 NXP 37.NB5 NR4 38.BK3 RK1 39.KB3 BN3 40.PCR4 PN3 41.BB2 RK2 42.RQN2 (adjourned)DC1(sealed move)43.RN7 KN1 44.NC7 PR4 45.RN8 RXP 46.NXP BB2 47.NB6 RK1 48.PR5 BXP RP 49.PR6 KR2 50.PR7 RQR1 51.RQ4 PN4 52.RQ8 RXP 53.BXR PN5+ 54.KN2 BNS 55.RQ7+ KN3 56.BQ4 PR3 57.RQ5 BN4 58.NK5+ KR2 59.RQ7+ KN1 60.NB7 NB5+ 61.KR2 NK7 62.NXB PXP 63.BK5 Black resigned.