

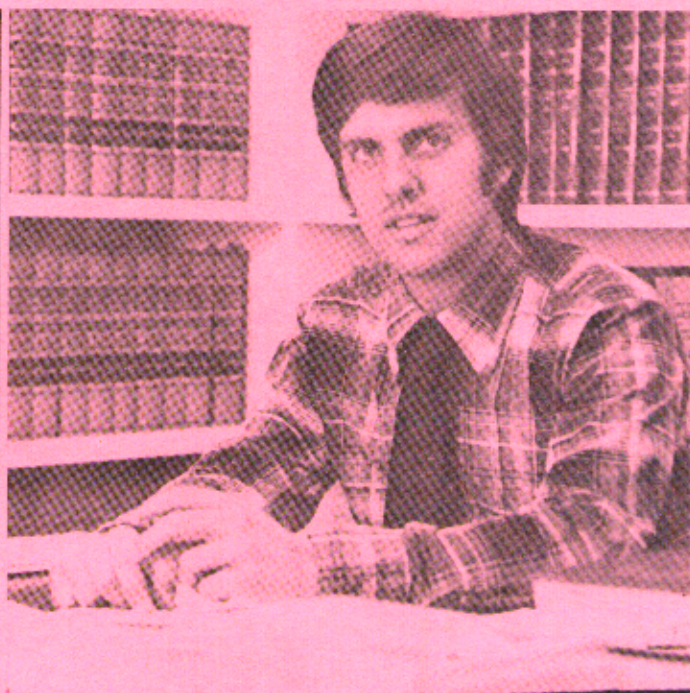
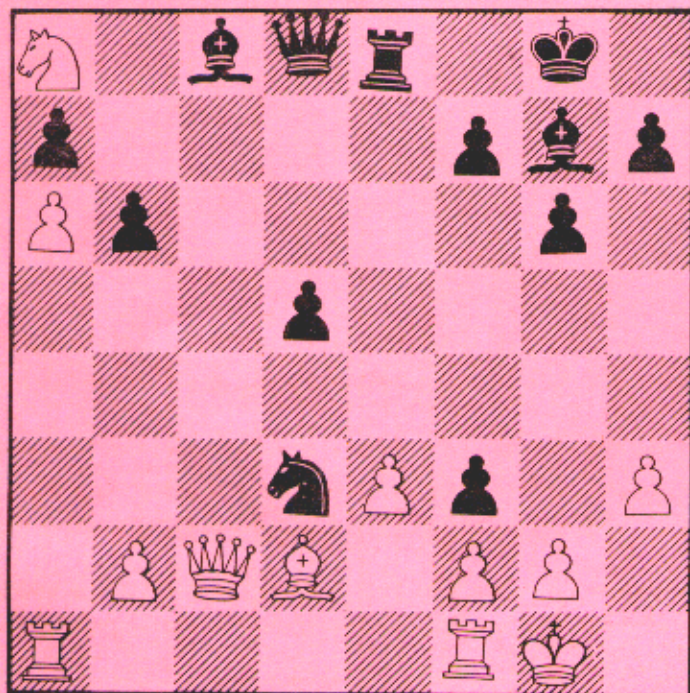
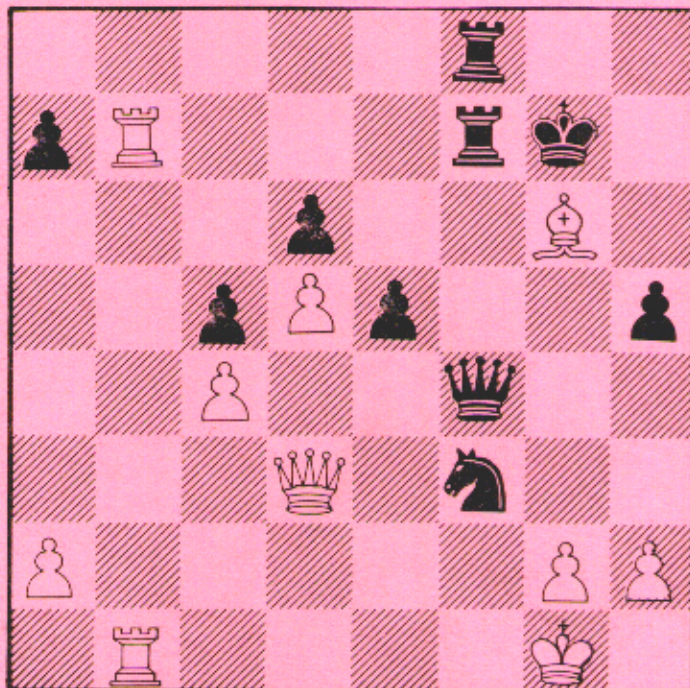
# THE CHESSMAN

THE OFFICIAL PUBLICATION  
OF THE

SOUTH CAROLINA & GEORGIA CHESS ASSOCIATION

PRICE 75¢

JAN-FEB 1978



FEATURING

## ATLANTA OPEN

## S.C. CHAMPIONSHIP



# CONTENTS

Shocron Wins.....	3
North Georgia Open.....	4
Games From the Atlanta Open.....	5
Class "B" Championship.....	13
Where To Play Chess in Georgia.....	13
Letters To Editor (Ga.).....	14
State of the GCA.....	14
Spasski-Korchnoi.....	15
1977 South Carolina Championship.....	16
Youth On the Road.....	18
Across SC and the USA.....	20
Palmetto Chess Club.....	21
SCCA Treasurer's Report.....	21
Notes From the President's Desk (SC).....	22
SCCA Officers.....	23
SCCA Mail Ballot.....	24
Tournament Announcements.....	25
Tournament Results.....	32

## JOIN THE GEORGIA CHESS ASSOCIATION

BENEFITS: You receive the newsletter six times a year, and  
GCA offers a special rate for combined USCF/GCA

### GCA OFFICERS

PRESIDENT: J. Earle Morrison 2672 Moss Lane, Marietta 30067  
404-952-8259  
VICE-PRES: Stan Sherman 1991 De Lowe Dr, Apt U6 SW Atlanta  
30311 404-753-7393  
SECRETARY: James P. Pressley 2296 Wakita Dr SE Marietta 30060  
404-436-1217  
TREASURER: Steve Hunt 4153 Wesley Club Dr Decatur 30034  
404-284-6528  
EDITOR: Ken Seagle 66 E Wesley Rd NE Atlanta 30305  
PUBLISHER: VACANT  
PUBLICITY DIR.: John Doyle 1431 F Druid Valley Dr Atlanta  
30329  
TRN. ORG.: L. Thad Rogers 3055 General Lee Rd Macon 31204  
JUNIOR OFFICER: Mark Coles 3392 Canary Lake Dr Duluth  
30136

### MEMBERSHIP

DIRECTOR: Tom Fallis PO Box 76242 Sandy Spgs 30328  
SEND MEMBERSHIP DUES, ADDR. CHANGES, TO FALLIS

COVER: (Upper) Rubin Shocron (Lower) Paul Tinkler

\*\*\*\*\*  
SEND GCA MEMBERSHIP APPLICATION TO: Tom Fallis, P.O.Box 76242, Sandy  
Springs, 30328. Make checks payable to G.C.A.

NAME: \_\_\_\_\_ INDICATE NEW OR RENEW \_\_\_\_  
ADDRESS: \_\_\_\_\_  
CITY: \_\_\_\_\_ STATE \_\_\_\_\_ ZIP \_\_\_\_\_ PHONE \_\_\_\_\_  
BIRTHDATE \_\_\_\_\_  
ENCLOSED IS \$4.00 1-year or \$7.00 2-year GCA membership  
FOR U.S.C.F. and G.C.A. send  
\$3.00 participating Jr. \$10.00 regular Jr.  
\$16.00 1-year  
U.S.C.F. IS \$15.00 1-year



# SHOCRON WINS

The following is a fabulous game. Mr. Shocron quickly takes over the black squares. After a sharp skirmish, showing just how weak Jared is on that color complex, the game is over and Mr. Shocron takes charge of the white squares as well!

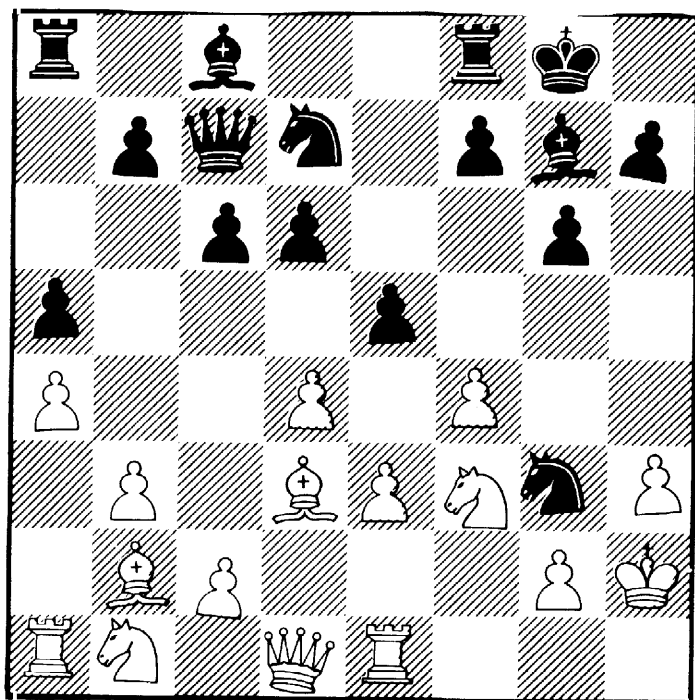
## ATLANTA OPEN

Jared Radin                      Reuben Shocron

- |     |       |       |
|-----|-------|-------|
| 1.  | P-KB4 | N-KB3 |
| 2.  | P-QN3 | P-KN3 |
| 3.  | B-N2  | B-N2  |
| 4.  | N-KB3 | O-O   |
| 5.  | P-K3  | P-Q3  |
| 6.  | B-K2  | QN-Q2 |
| 7.  | O-O   | P-QR4 |
| 8.  | P-QR4 | P-B3  |
| 9.  | P-R3  | Q-B2  |
| 10. | P-Q4  |       |

"Stopping" ...P-K4, but making the fianchettoed B bad.

- |     |      |       |
|-----|------|-------|
| 10. | ...  | N-K5! |
| 11. | B-Q3 | N-N6! |
| 12. | R-K1 | P-K4! |
| 13. | K-R2 |       |



- |     |      |      |
|-----|------|------|
| 13. | ...  | PxBP |
| 14. | PxP  | N-R4 |
| 15. | Q-Q2 | P-Q4 |
| 16. | P-N3 | B-R3 |

- |     |       |        |
|-----|-------|--------|
| 17. | QB-B1 | P-KN4! |
|-----|-------|--------|

Of course, if PxP, then QxP+ and it's all over.

- |     |      |  |
|-----|------|--|
| 18. | B-R3 |  |
|-----|------|--|

One should not hope for Mr. Shocron to save the exchange. He has a habit of sacrificing it!

- |     |       |      |
|-----|-------|------|
| 18. | ...   | PxP! |
| 19. | P-KN4 | N-N6 |
| 20. | BxR   | NxB  |
| 21. | N-B3  |      |

Finally.

- |     |      |      |
|-----|------|------|
| 21. | ...  | B-K3 |
| 22. | N-K2 | N-K5 |
| 23. | Q-B1 |      |

No point in facing connected passed pawns.

- |     |         |       |
|-----|---------|-------|
| 23. | ...     | N-N3  |
| 24. | N(2)-N1 | P-KB4 |
| 25. | P-B4    | PxNP  |
| 26. | RPxP    | BxP   |

Now White's K side is completely denuded of protection.

- |                       |      |       |
|-----------------------|------|-------|
| 27.                   | BxN  | PxB   |
| 28.                   | RxP  | N-R5! |
| 29.                   | Q-B1 | N-B4  |
| If 29. NxN?? P-B6dis+ |      |       |
| 30.                   | Q-K1 | Q-B2  |
| 31.                   | R-R2 | Q-R4+ |
| 32.                   | K-N2 | BxN+  |
| 33.                   | NxB  | Q-N5+ |
| 34.                   | K-B2 | Q-N6+ |
| 35.                   | K-K2 | Q-N7+ |
| 36.                   | Q-B2 | N-N6+ |
| 37.                   | K-Q3 | QxQ   |
| 38.                   | RxQ  | NxR   |
| 39.                   | KxN  | R-K1+ |
| 40.                   | K-Q3 | R-K6+ |
| 41.                   | K-B2 | B-N2! |

42. P-Q5 is no good because of R-B6+

- |     |         |      |
|-----|---------|------|
| 42. | N-K5    | BxN  |
| 43. | PxB     | P-B6 |
| 44. | Resigns |      |

# NORTH GEORGIA OPEN

White, Shocron, Reuben (2162)  
Black, Acosta, Mariano (2095)

Mr. Acosta recently placed very well in the World Open. His Win against Shocron in the Open is given below:

- |    |       |       |
|----|-------|-------|
| 1. | P-K4  | P-K4  |
| 2. | N-KB3 | N-QB3 |
| 3. | B-N5  | P-QR3 |
| 4. | B-R4  | N-B3  |
| 5. | O-O   | NxP   |

The "Open Defense" to the Ruy Lopez is appropriately named because it creates an open game. The more popular ... 5. B-K2 is called the "Closed Defense.")

6. P-Q4

(Other moves are: R-K1, Q-K2, BxN and P-B4)

- |    |      |       |
|----|------|-------|
| 6. | ...  | P-QN4 |
| 7. | B-N3 |       |

Less seen moves are: P-Q5 and NxP.

- |    |     |      |
|----|-----|------|
| 7. | ... | P-Q4 |
| 8. | PxP |      |

Less common, though not bad is: 8. NxP NxN, 9. PxN.

- |    |      |      |
|----|------|------|
| 8. | ...  | B-K3 |
| 9. | P-B3 |      |

A popular alternative is 9. Q-K2, ..., 10. R-Q1, ... B-K3, QN-Q2, P-Qr4, and N-B3?

- |    |     |       |
|----|-----|-------|
| 9. | ... | B-QB4 |
|----|-----|-------|

The Italian variation. A good alternative is 9. B-K2, which is more logical according to Euwe since Black's QBP is not prevented from going to QB4 which gives a good pawn formation (Queen side play) for Black.

10. Q-K2

Usual is 10. QN-Q2 followed by 11. B-B2. 10. Q-K2 tries to combine both the Keres Line and 9. P-B3.

- |     |      |      |
|-----|------|------|
| 10. | ...  | O-O  |
| 11. | B-K3 | P-B4 |

P-B3 was played in two games by (a) with 12. PxP, Bertok-Geller, Stockholm 1962. (b) with 12. N-Q4 Gligoric-Unzocker, Oberhausen 1961. Other moves are 11...BxB and 11...Q-K2 as played in Matanovic-Karaklajic, Yugoslavia 1955.

12. QN-Q2

Other replies are (1) 12. BxB, NxB 13. B-B2, (2) 12. N-Q4, BxN, 13. BxB (or PxB, P-B5, 14. P-B3, with an irregular position.)

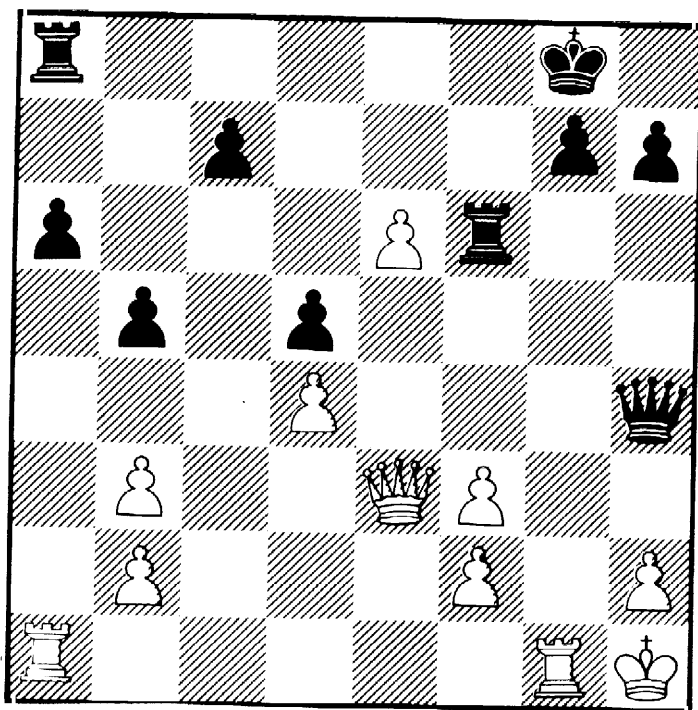
- |     |      |      |
|-----|------|------|
| 12. | ...  | BxB  |
| 13. | QxB  | P-B5 |
| 14. | Q-K2 | N-B4 |
| 15. | N-Q4 | NxN  |
| 16. | PxN  | NxB  |
| 17. | PxN  |      |

(If 17. NxN, P-B6!)

- |     |      |        |
|-----|------|--------|
| 17. | ...  | P-B6!? |
| 18. | NxP  | B-N5   |
| 19. | Q-K3 |        |

Better is KR-K1

- |     |        |       |
|-----|--------|-------|
| 19. | ...    | BxN   |
| 20. | PxB    | Q-R5  |
| 21. | K-R1   | R-B5  |
| 22. | P-K6?! | R-B3! |
| 23. | R-KN1  |       |



- |     |        |       |
|-----|--------|-------|
| 23. | ...    | Q-R6  |
| 24. | P-K7   | QxBP+ |
| 25. | QxQ    | RxQ   |
| 26. | KR-QB1 |       |

Better is 26. RxP, R-K1 or 26. K-N2.

- |     |      |        |
|-----|------|--------|
| 26. | ...  | RxP    |
| 27. | RxBP | R-K7   |
| 28. | R-Q7 | R-K1   |
| 29. | RxRP | R(1)xP |
| 30. | RxR  |        |



NORTH GEORGIA OPEN (cont..)

Here White offered a draw which was declined.

30. ... RxR  
 31. R-Q6?  
 31. R-N6! leads to a draw.  
 31. ... R-K6  
 32. RxP RxP  
 33. K-N2 RxP+  
 34. K-N3 P-N5  
 35. P-R4 P-N6  
 36. R-Q7

Still, all is not lost by playing  
 36. R-N5

36. ... R-Q7  
 37. P-Q5 R-Q6+  
 38. K-N4

If 38. K-N2, R-Q5, 39. R-N7, RxRP  
 40. P-Q6, R-Q5 41. P-Q7, P-N7

38. ... R-Q5+  
 39. K-B5 R-QN5  
 40. R-Q8+

Draw by 40. K-K6, P-R3

40. ... K-B2  
 41. R-Q7+ K-K1  
 42. K-K6 P-N7  
 43. RxP R-K5+  
 44. Resigns

Allsbrook won this tournament with a score of 4 pts/5, losing only to Shocron in Rd.4. Going into the last round, Shocron, with 3 pts. had a chance to tie Allsbrook for first, but unfortunately, he lost to me. There were five players including me, who could tie for second. Luckily, the two pairs drew, which left me with 3½ points and therefore a clear second place.

Mariano Acosta, Phillipenes

\*\*\*\*\*

GCA MEMBERS

The Macon Chess Club has moved its meeting time and place to 7:00 pm Tuesday nights at St. Paul apartments at 1330 Forsyth Street. We wish to extend an invitation to everyone to join us.

\*\*\*\*\*GAMES FROM THE ATLANTA OPEN\*\*\*\*\*

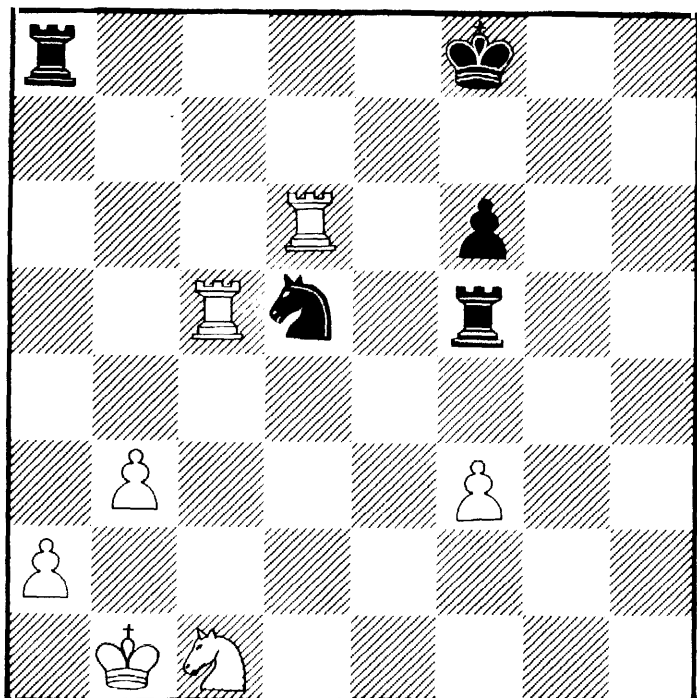
(November 25,26,27,1977)

## ROUND 3

Klaus Pohl (2094) M.C. Wright (1939)

1.	P-K4	P-KN3
2.	P-Q4	B-N2
3.	N-QB3	P-QB4
4.	N-B3	PxP
5.	NxP	N-QB3
6.	B-K3	P-Q3
7.	Q-Q2	B-Q2
8.	O-O-O	P-QR3
9.	N-Q5	R-B1
10.	N-N3	B-K3
11.	P-KB3	BxN
12.	PxB	N-K4
13.	K-N1	N-B5
14.	BxN	RxB
15.	N-R5	R-R5
16.	N-N3	Q-Q2
17.	KR-K1	N-B3
18.	B-R6	O-O
19.	BxB	KxB
20.	P-N4	R-B1
21.	P-R4	R(5)-B5
22.	P-B3	N-N1
23.	P-R5	P-R4
24.	PxP	RPxP
25.	NxP	R-R4
26.	N-N3	R(1)-R1
27.	N-B1	Q-N4
28.	P-N3	R-R6
29.	P-B4	Q-R3
30.	Q-N2+	P-B3
31.	R-K6	P-QN4
32.	P-B5	P-N5
33.	PxP	PxP
34.	P-N5	R-KB1
35.	R-R1	Q-B1
36.	Q-R2	R-B2
37.	Q-R7+	K-B1
38.	QxP	R-N2
39.	Q-B5	Q-B6
40.	R(1)-K1	R-R1
41.	Q-Q3	RxNP
42.	QxQ	PxQ
43.	RxQP	R-B4
44.	R-K3	N-K2
45.	RxP(3)	NxP
46.	R-B5	RxBP





IF:

46. ... N-K6  
47. RxR NxR  
48. RxP+

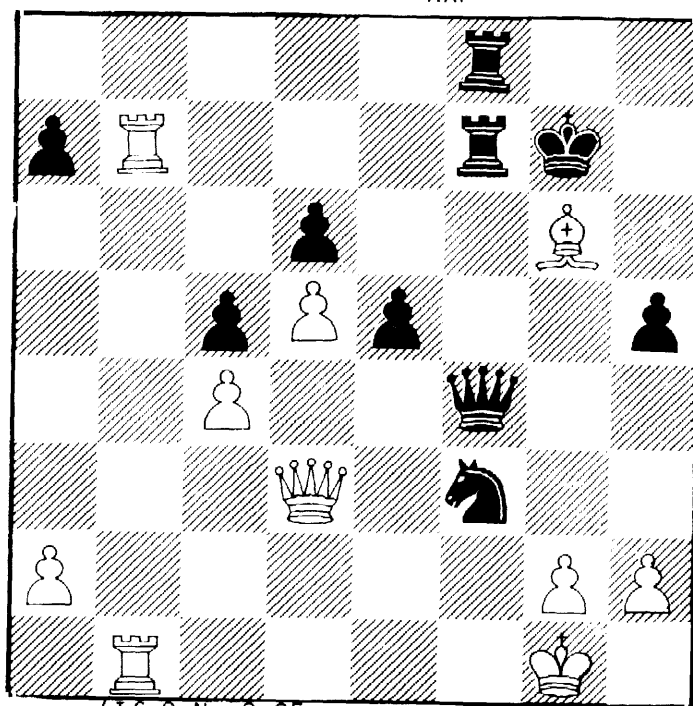
47. R(6)xN K-N2  
48. R-B5 R-K6  
49. R-B6 R-KB1  
50. P-R4 K-N3  
51. R-Q5 R-KR1  
52. P-R5 R-R1  
53. P-R6 R-R2  
54. P-N4 R(6)-K2  
55. N-Q3 K-N2  
56. P-N5 K-B2  
57. N-B5 Resigns

## ROUND 2

Steve Hunt (1849) Klaus Pohl (2094)

1. P-Q4 N-KB3  
2. P-QB4 P-KN3  
3. N-QB3 B-N2  
4. P-K4 P-Q3  
5. N-B3 O-O  
6. B-K2 P-K4  
7. O-O N-B3  
8. P-Q5 N-K2  
9. N-K1 P-B4

10. N-Q3 N-Q2  
11. R-N1 P-B4  
12. PxP NxP  
13. N-K4 N-B3  
14. P-B3 N-Q5  
15. B-N5 B-B4  
16. N(Q)-B2 P-KR3  
17. BxN BxB  
18. NxN QxN  
19. E-Q 3 Q-N4  
20. N-K4 BxN  
21. BxB R-B2  
22. R-B2 QR-B1  
23. Q-Q2 Q-R4  
24. Q-Q3 K-N2  
25. P-QN4 P-N3  
26. PxP NPxP  
27. KR-N2 Q-N4  
28. R-N7 N-B4  
29. Q-K2 P-KR4  
30. K-R1 Q-R5  
31. K-N1 Q-B5  
32. Q-Q3 N-Q5  
33. BxP NxP+



(If QxN, Q-Q5+

34. ~~ExN~~ Q-N4+  
35. K-R1 QxB  
36. RxR+ QxR  
37. R-N1+ K-R3  
38. Q-Q 2+ Q-B5  
39. Q-R5 QxP+  
40. R-N2 Q-Q8+  
41. R-N1 R-B8  
42. Resigns



Mr. Shocron obviously meant to win this tournament (he lost ten pounds doing it!). It's good to see his form returning, and equally pleasant to recall that he is a Georgia resident.

For a while, it looked as if Lee Taylor, the N.C. champion, was going to run away with the tournament, but Reuben stopped him in round five, in the following game.

R. Shocron

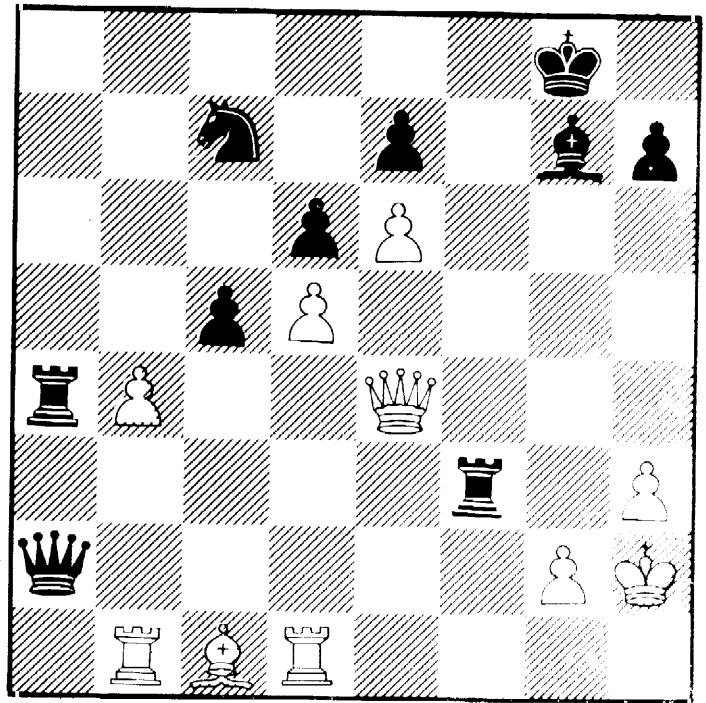
Lee Taylor

- |          |       |
|----------|-------|
| 1. P-Q4  | N-KB3 |
| 2. P-Q34 | P-B4  |
| 3. P-Q5  | P-QN4 |
| 4. PxP   | P-QR3 |
| 5. PxP   | BxP   |
| 6. N-QB3 | P-N3  |
| 7. P-B4  | B-KN2 |
| 8. N-B3  | P-Q3  |
| 9. P-K4  | BxB   |
| 10. RxB  | Q-N3  |
| 11. Q-K2 | O-O   |
| 12. P-K5 | N-N5  |
| 13. P-K6 |       |

First, P-KR3 then P-K6 -

Shocron

- |           |       |
|-----------|-------|
| 13. ...   | P-B4  |
| 14. P-KR3 | N-B3  |
| 15. K-B2  | N-R3  |
| 16. K-N1  | N-B2  |
| 17. R-Q1  | KR-N1 |
| 18. R-N1  | Q-N2  |
| 19. Q-Q3  | Q-R2  |
| 20. K-R2  | N-K5  |
| 21. NxN   | PxN   |
| 22. QxP   | QxP   |
| 23. P-B5  | PxP   |
| 24. QxP   | R-KB1 |
| 25. Q-K4  | R-R5  |
| 26. P-QN4 | RxN?  |



Could Black have drawn here?

- |            |       |
|------------|-------|
| 27. R-Q2   | B-K4+ |
| 28. K-N1   | B-Q5+ |
| 29. K-R2   | R-B8  |
| 30. RxQ    | RxR   |
| 31. Q-N4+  | K-R1  |
| 32. B-N2!! | RxR   |
| 33. BxB+   | PxB   |
| 34. QxP+   | K-N1  |
| 35. Q-N4+  | K-R1  |
| 36. Q-B5   |       |

Winning the rook by the mate threat.

- |          |         |
|----------|---------|
| 36. ...  | R-R1    |
| 37. QxR  | N-K1    |
| 38. P-N5 | R-N1    |
| 39. P-N6 | N-B3    |
| 40. P-N7 | NxP     |
| 41. Q-N5 | N-B2    |
| 42. Q-B6 | resigns |
- If N-K1, Q-B8

Not that Lee Taylor is "easy pickins," as they say in S. Ga. Take a look at the fine endgame play in his fourth round win over Klaus Pohl, one of the strongest players in the Southeast.

ATLANTA OPEN  
Rnd 4, Board 1

L. Taylor (2046) K. Pohl (2094)



1. P-Q4            N-KB3  
 2. P-QB4           P-KN3  
 3. N-QB3           B-N2  
 4. P-K4            P-Q3  
 5. N-B3            O-O  
 6. B-K2            P-K4  
 7. PxP            PxP  
 8. QxQ            RxQ  
 9. B-N5  
    NxP doesn't work, of course.  
 9. ...            R-K1?  
    Not a good way to avoid the pin,  
 and he gives up the file.  
 10. O-O-O!        N-R3  
 11. N-K1           B-K3  
 12. N-B2           P-B3  
 13. R-Q2           P-R3  
 14. B-K3           N-KN5  
 15. BxN            BxB  
 16. P-B3           B-K3  
 17. P-QN3          B-KB1  
 18. KR-Q1          N-B4  
 19. K-N2           P-QR4?!  
    This hurts, later.  
 20. BxN!           BxB  
 21. N-R4           B-K2  
 22. P-B5!  
    Well, it wasn't much later.  
 22. ...           QR-Q1  
 23. K-B3!  
    Improving his K's position. At  
 this point, while showing the game  
 to a friend of mine, I was shocked  
 to hear him declare: "Well, it's  
 all over; Black just exchanges rooks  
 and wins, because he has the two bis-  
 hops." I thought, "Huh?"  
 23. ...           RxR  
 24. RxR           K-B1  
 25. R-Q3           R-Q1  
 26. RxR           BxR  
    And my friend said, "See? It's  
 all over. Black has a win." And I  
 thought. "This man is a descendent  
 of Tarrasch!"  
 27. N-K3!        K-K2  
 28. N-B4!        BxN  
    "Well," he said, "he should  
 have kept the two bishops." But,  
 unless I am wrong, and I'd be happy  
 to see mail on the subject, Pohl did  
 what he had to do, otherwise N(R4)-N6  
 and White wins the RP and the game.  
 29. KxB           P-R4  
 30. N-N2           P-N4+  
 31. PxPep          BxP  
 32. P-QN4          PxP

33. KxP!  
    The 8th square is White.  
 33. ...           B-Q5  
 34. N-Q3  
    Not yet.  
 34. ...           K-Q3  
 35. P-QR4          P-B4  
 36. K-B4           B-N3  
 37. K-N4           B-K6  
 38. N-N2           B-Q7+  
 39. K-B4           B-R4  
 40. N-Q3           B-N3  
 41. P-R3  
    Nearing Zugzwang.  
 41. ...           P-B5  
 42. N-B1           B-R4  
 43. N-N3           B-N3  
 44. P-R5           B-B7  
 45. P-R6           B-N3  
 46. N-R5!!        B-R2  
 47. N-N7+        K-B2  
 48. K-N4           K-Q2  
    If K-N3, then W wipes  
 out the K side pawns.  
 49. N-R5           K-B2  
 50. N-B4           B-Q5  
 51. K-R4           B-N8  
 52. P-R4  
    Missing NxP; probably time.  
 52. ...           B-Q5  
 53. K-N4           K-Q2  
 54. NxP!  
    Now Black's K lacks one tempo!  
 54. ...           K-B2  
 55. NxP           B-K6  
 56. P-K5           K-Q2  
    That tempo again.  
 57. NxP!           B-Q7+  
                   and resigns.  
    Not to put down the B do I  
 give this game, but only to illus-  
 trate the fact that the position  
 determines which minor piece is  
 effective. For example, consider  
 the position, from Lundin-Najdorf,  
 Helsinki Olympics, 1952.  
 41. K-B4           P-N4+  
 42. K-K4           P-KR4!  
 43. P-QR4  
 43. KxP is hopeless because of  
 43. ...           K-K4  
 44. N-B3+        and K-B5  
 43. ...           B-B4+  
 44. K-Q4           P-R4  
 45. N-B4           P-R5!  
 46. K-K3           K-K2!

If 47. NxRP B-K5!!

47. K-B3 K-Q2  
 48. K-K3 K-B2  
 49. K-B3 P-B3  
 50. K-K3 P-N5!  
 51. PxP BxP  
 52. N-N2

If 52. NxRP P-Q7! 53. KxP BB6!!  
 (PxB, P-R6) or 52. KxP B-B6!!

53. N-K3 BxNP!! 54. NxB P-R6  
 55. K-K3 P-R7!  
 52. ... B-K7  
 53. N-B4

- If 53. NxP B-B8! 54. N-B4 BxP!!  
 55. NxP P-R6 56. K-B2 P-R7!  
 53. ... P-B4  
 54. K-B4

White is running out of moves:

54. NxRP P-B5+ 55. K-B2 P-Q7!  
 56. KxB P-B6+ 57. PxP P-R6 or  
 54. N-Q2 or N2 K-N3 5. N-B4+  
 K-B4 or 54. K-Q2 or B2, P-B5  
 54. ... B-Q8

55. N-Q2

- Or 55. NxP B-B7 56. N-B4 BxP

55. ... K-N3!  
 56. KxP K-B4  
 57. K-K4 B-B7  
 58. K-K3 K-N5!  
 59. K-Q4 BxP  
 60. N-B3

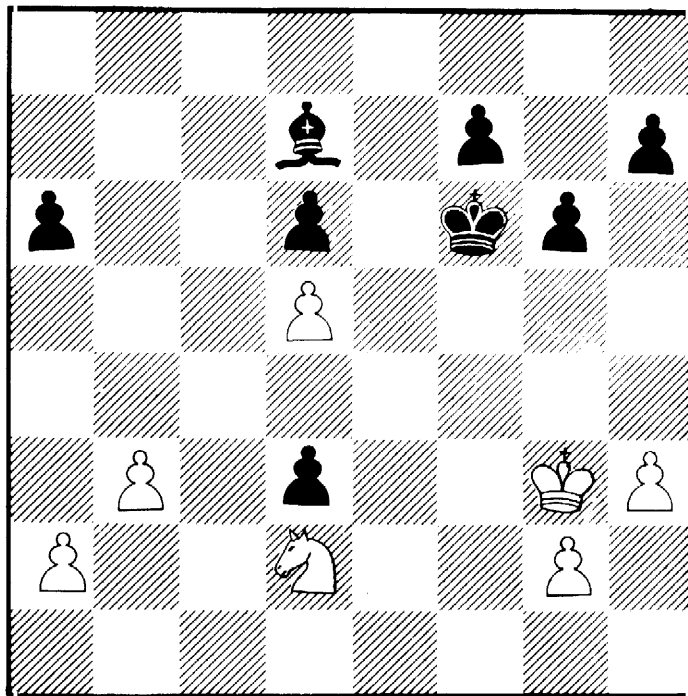
If 60. kxP BxQP

60. ... B-B5!  
 After 60. ... BxRP 61. KxP  
 61. N-Q2 B-R3  
 62. N-K4 K-N6!  
 63. K-K3 K-B7  
 64. N-Q2 B-N2  
 65. N-B3

Threatens N-K1+

65. ... K-B6!  
 66. N-Q4 B-R3  
 67. N-B3 B-B5  
 68. N-Q2 BxP  
 69. N-N1+ K-N7  
 70. N-Q2 K-B7  
 71. Resigns.

Najdorf isn't known for his  
 endgame play, but he should be.  
 The notes were by Kmoch.

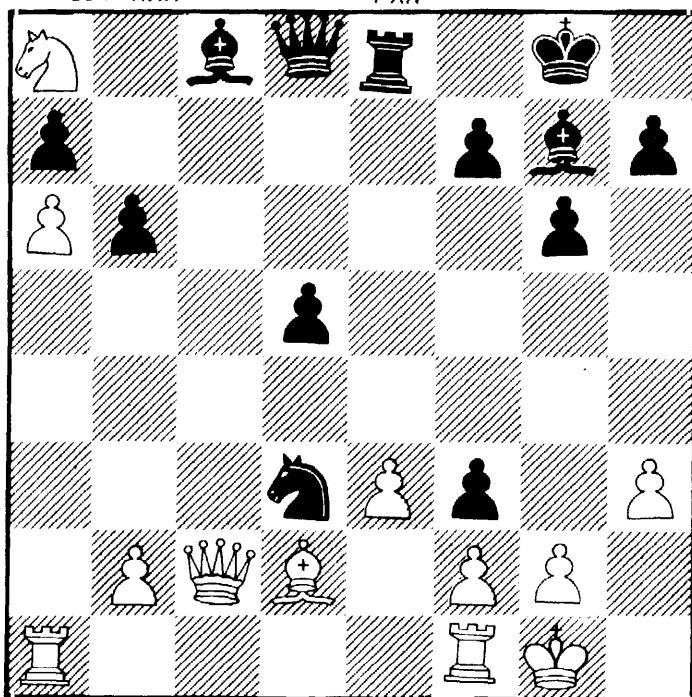




\*\*\*\*\*GAMES FROM THE ATLANTA OPEN\*\*\*\*\*

R. Shocron (2162) Justin Morrison (1918)

- |           |         |
|-----------|---------|
| 1. P-Q4   | N-KB3   |
| 2. P-QB4  | P-QB3   |
| 3. N-QB3  | P-Q4    |
| 4. N-KB3  | P-KN3   |
| 5. P-K3   | B-N2    |
| 6. B-Q3   | O-O     |
| 7. O-O    | R-K1    |
| 8. P-KR3  | QN-Q2   |
| 9. PxP    | PxP     |
| 10. B-Q2  | P-QN3   |
| 11. P-QR4 | B-N2    |
| 12. P-R5  | N-K5    |
| 13. Q-N3  | P-K4    |
| 14. N-QN5 | N(2)-B4 |
| 15. PxN   | NxP     |
| 16. Q-B2  | NxB     |
| 17. P-R6  | B-B1    |
| 18. N-B7  | P-K5    |
| 19. NxR   | PxN     |



Now if 20. QxN, Q-N4, 21. P-N3,  
BxP & White is lost

- |          |      |
|----------|------|
| 20. Q-B7 | PxP  |
| 21. KxP  | BxP+ |
| 22. KxB  | QxN  |
| 23. B-B3 | BxB  |

Black offered a Draw here-Klaus Pohl, who was watching the game, saw 23. P-Q5, and White is lost. Shocron at first declined, then, after looking, accepted.

\*\*\*\*\*GAMES FROM THE ATLANTA OPEN\*\*\*\*\*

Don Mullis (1636) Jerry Wheeler (1771)

- |         |       |
|---------|-------|
| 1. P-K4 | P-QB4 |
| 2. N-K2 |       |

Indicating more a sense of humor than any intention of avoiding the main lines of the Sicilian. 95% of the time Keres' 2.N-K2 transposes back into "the Book" after causing a "booked-up" Black a few minutes of worry.

- |          |       |
|----------|-------|
| 2. ...   | P-Q3  |
| 3. P-QB4 | N-QB3 |
| 4. P-Q4  | PxP   |
| 5. NxP   | P-KN3 |
| 6. N-QB3 | B-N2  |
| 7. B-K3  | N-B3  |
| 8. B-K2  | O-O   |
| 9. O-O   | B-Q2  |
| 10. Q-Q2 | P-QR3 |
| 11. P-B3 |       |

The game has now transposed into a variation of the Maroczy Bind which is favored by Petrosian. Kotov (in Informant 17) questioned Black's 10 ...P-QR3, recommending instead an exchange of knights on d4 followed by 11...B-B3 with a slight edge for White. But White seems to get no more than a slight edge anyway with the line chosen here.

- |         |      |
|---------|------|
| 11. ... | R-K1 |
|---------|------|

11...R-B1 and 11...Q-R4 have also been tried here--Black has no active play in any case, but also has no weaknesses.

- |           |       |
|-----------|-------|
| 12. KR-Q1 | NxN   |
| 13. BxN   | B-B3  |
| 14. QR-B1 | QR-B1 |
| 15. P-QN3 |       |

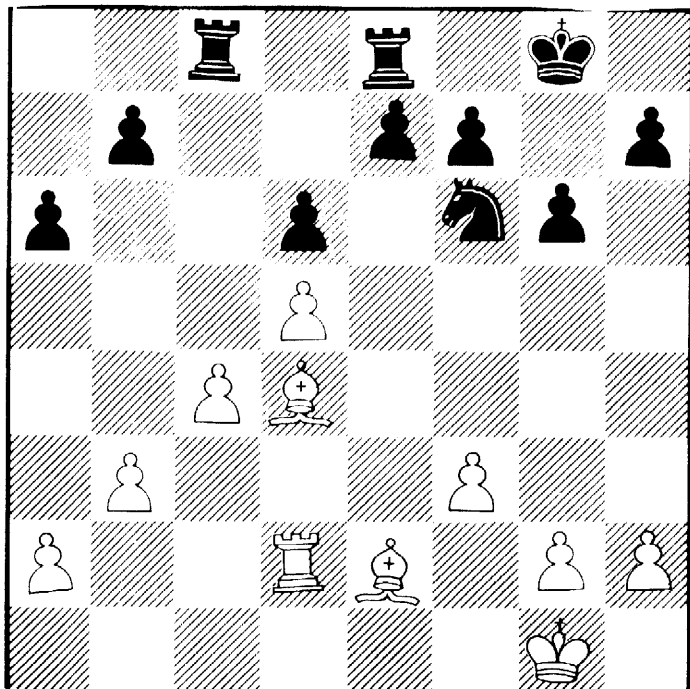
A typical Maroczy middle-game. Neither side has any real weaknesses to attack; White has more space; Black is somewhat hampered by his inability to free himself in the center; and White's KB is locked in by its own pawns.

- |         |      |
|---------|------|
| 15. ... | Q-R4 |
|---------|------|

A little trap to stop the usual N-Q5.

- |             |         |
|-------------|---------|
| 16. N-Q5? ! | Anyway! |
| 16. ...     | QxQ     |
| 17. RxQ     | BxN     |
| 18. KPxB    | B-R3    |

19. R(1)-Q1 BxR  
20. RxB



Black has won an exchange which normally ought to be enough to win the game, but White's two bishops and lack of exploi-weaknesses will make Black's task far from simple.

20. ... N-Q2  
21. B-N2

Stopping either P-K3 or K4 due to the pressure on Black's QP after the exchange on e6.

21. ... QR-N1  
21. Without the KP break stifled, Black now aims for opening up the game with P-QN4

22. P-QR4 N-B4  
23. B-Q1 KR-QB1  
24. R-Q4

Centralization, with the possibility of pushing P-QN4 while protecting the then-exposed QBP.

24. ... P-QN4

Black may have done better to solidify his position against the White bishops by P-KB3 and P-QN3 before deciding on this or some other break. Since White has no forcing threats, Black has all the time in the world to work out his exchange-up win.

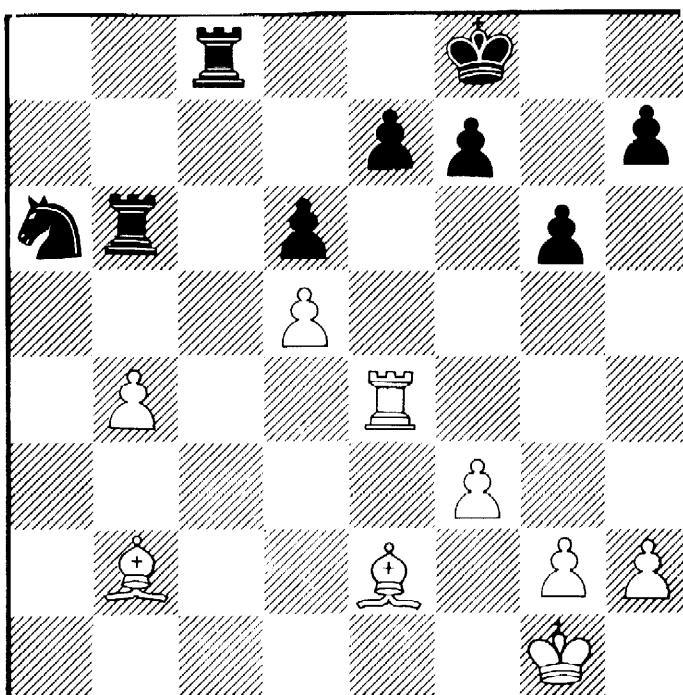
25. BPxP PxP  
26. PxP

White spent a half-hour here working out the consequences of either P-R5 of PxP with P-QN4 to follow. His decision seems to be correct, especially since P-R5 allows the dangerous-looking P-N5.

26. ... RxP  
27. P-QN4 N-R3

Black's position is beginning to get comfortable. 27...N-Q2 allows 28. B-R 4, R-N2, 29.B-B6, R/2-B2, 30.P-N5 and White looks very good.

28. B-K2 R-N3 forced.  
29. R-K4 K-B1?



Loses material and probably the game as well. 29...NxP is forced and seems to win, e.g. if 30. RxP, NxP or if 30. B-Q4 R-N2 and everything holds with Black remaining an exchange and a pawn ahead.

30. B-Q4 RxP  
31. BxN

Material is again even but White has much the better position, and sets out to demonstrate an instructive win with two B's versus R + P.

31. ... R-R1

Black can never quite manage to connect his rooks on either the 7th or 8th ranks in time to do any damage. White, it is true, is now forced to make about



\*\*\*\*\*GAMES FROM THE ATLANTA OPEN\*\*\*\*\*

14 moves in a row but at the end of it all has the initiative all to himself.

32.	B-KB1	R-N8
33.	K-B2	R-R7+
34.	B-K2	R-R4
35.	B-B4	R-B8
36.	B-K3	R-B7+
37.	K-N3	P-B4
38.	R-Q4	R-R5
39.	B-N3	RxR
40.	BxR/Q4	R-Q7
41.	B-K3	R-Q6
42.	B-R6+	K-B2
43.	B-R2	K-B3
44.	P-R4	

To prevent P-N4 imprisoning the B.

44.	...	R-R6
45.	B-N5+	K-B2
46.	B-QB4	K-B1

Black has no forced repetition of moves by chasing the B and QP.

47.	B-N5	R-R2
48.	B-K3	R-R6
49.	B-R6+	K-B2
50.	B-Q7!	

Finally! White can now set up a real mating net.

50.	...	K-N1
51.	B-K6+	K-R1
52.	B-KB8	R-R2
53.	B-R6	R-R6
54.	K-B4!	R-R5+
55.	K-N5	R-R7
56.	B-KB8!	

There is no stopping K-R6 and B-N7 mate. Black's Rook is entirely irrelevant.

56.	...	P-R3+
57.	KxP	Resigns

Notes based on "Dauntless Don's" comments after the game with some additions by Mike Decker.

\*\*\*\*\*GAMES FROM THE ATLANTA OPEN\*\*\*\*\*

Justin Morrison (1718) Brad Jenison (1711)

1.	P-K4	P-K4
2.	N-QB3	N-QB3
3.	B-B4	B-B4
4.	Q-N4	Q-B3
5.	N-Q5	QxP+
6.	K-Q1	K-B1
7.	N-R3	Q-Q4
8.	P-Q3	P-Q3
9.	Q-B3	BxN
10.	R-B1	B-K3
11.	P-B3	Q-N8
12.	RxQ	BxR
13.	NxP	BxB
14.	NxR	B-K3
15.	N-B7	N-B3
16.	NxB+	PxN
17.	B-N5	K-K1
18.	BxN	R-B1
19.	Q-R5+	P-N3
20.	Q-R4	P-KR3
21.	K-B2	BxP
22.	QxB	RxB
23.	QxRP	R-B7+
24.	K-N3	RxKNP
25.	Q-R8+	K-Q2
26.	Q-N7+	K-Q1
27.	R-KB1	Resigns

## CLASS "B" CHAMPIONSHIP

October 8-9, 1977

White: John Wiley Smith Jr. - Black: Don Mullis  
(1694) (1631)

1. P-QB4, P-KB4! 2. QN-B3, KN-B3 3. P-Q4, P-K3 4. P-KN3, B-N5 5. B-N2, O-O  
6. N-B3, P-Q3 7. O-O, QN-Q2 8. R-K? BxN 9. PxB, N-N3 10. Q-Q3, Q-Q2 11. N-Q2,  
Q-R5 12. P-B3, P-K4! 13. P-K4, PxKP 14. BPxP, B-K3! 15. P-Q5, B-N5 16. P-KR3  
B-R4 17. K-R2, B-N3 18. B-B3, NN3-Q2 19. N-N3, N-N3 20. P-B5, NxQP! 21. PxP  
PxP 22. P-B4, Q-R3! 23. B-N5, NQN5 24. Q-Q2, N-B3!! 25. QR-B, QR-Q 26. B-N2  
P-KR3 27. B-R4, B-R2 28. P-N4, N-K2 29. B-N3, P-QN3 30. R-K2, Q-N2 31. R1-K  
P-KN4 32. K-R, Q-B!!! 33. Q-Q3, N-N3 34. Q-QB3, R-B2 35. R-KB, R1-B 36. N-B  
NxKP! 37. RxN, RxR+ 38. BxR, RxB+ 39. K-N2, RxN!!! 40. Resign.

---

White: Jim Pressley (1775) Black: Don Mullis (1631)

1. P-K4, P-QB3 2. P-Q4, P-Q4 3. N-QB3, PxP 4. NxP, N-B3 5. NN3, B-N5 6. N-B3, BxN  
7. PxB, QN-Q2 8. B-QB4, P-K3 9. Q-K2, Q-B2 10. B-K3, B-Q3 11. O-O-O, O-O-O  
12. R-Q3, N-Q4 13. R-N3, NxB 14. PxN, BxN 15. PxB, QxP 16. B-R6, N-N3 17. B-Q3  
P-KR4 18. P-QB4, P-R5 19. P-B5, N-Q4 20. B-R6, R-Q2 21. P-K4, N-K2 22. R-Q1?  
PxB! 23. QxP+, K-Q1 24. P-K5, R-B2 25. R-N+, N-B 26. R-N7, RxR 27. QxR, QxBP  
28. P-N4, R-B 29. P-N5, Q-B6+ 30. K-N1, Q-N5+ 31. K-B2, QxNP 32. Resign

---

## WHERE TO PLAY CHESS IN GEORGIA

ADEL: Cook County Chess Club, Cook High School, Adel, Thur. 305.  
ALBANY: Albany Chess Club, NW Branch-Albany Library, Albany  
ATHENS: Athens Chess Club, Dudly Park, Athens, Thur., 8P.M.  
Univ. of Georgia C.C., Chemistry Bldg. Rm. 1505, Wed. 7:30 P.M.\*  
ATLANTA: Tues. Ga. Tech CC, Student Center, 3rd Floor, 7:30  
Wed. Briarcliff High School, 3:10 to 7:30 P.M.  
Thurs. Northeast C.C., St. Michaels Church, 3323 Chestnut Dr., 7:00 P.M.  
Thurs. Decatur CC. Church of the Epiphany, 2089 Ponce de Leon, Parish Hl. 7:30  
Fri. Atlanta CC, Luckie St., YMCA, 7:30 P.M.  
Sat. Emory Univ. CC. Rm 211, Student Union, 12:30\*  
Sat. Eastside CC. The Meeting Place, 2564 Gresham Rd. Decatur, 3-8 P.M.  
AUGUSTA: Aug.-N. Aug. CC. N. Aug. Rec. Center, Wed. 7:30  
DALTON: Dalton CC - contact Willard Strain (1508 Dug Cap Rd.)  
MACON: Macon CC, Robert Train Bldg., Oglethorpe Blvd., Wed. 7:00  
MARIETTA: Cobb Co. CC, Cobb Civic Center, Clay E. Fairgrounds St. -Thurs 7:30  
ROME: Rome CC. Rome Rec., Center, 300 W. 3rd st. Friday nights.  
SAVANNAH: Armstrong College CC, Gamble Hall, Friday, 12:30\*  
Savannah CC, Daffin Park Activities Bldg., Ph - for info. 355-3979, Mon. 7:00  
STATESBORO: Statesboro and Ga. Souther Ctr. Mon. & Fri. 7:00\*  
THOMASTON: Thomaston CC, Civic Center, Tues. 7:30  
VALDOSTA: Valdosta CC, Tall Tree Apts. Rec. Ctr., 220 Connel Rd., Tues 7:30

NOTE: BRING SETS AND BOARDS TO CHESS CLUBS \* Many College Chess Clubs meet only  
during the school year. SEND NEW LISTINGS, ETC., TO G.C.A. EDITOR.



## LETTERS TO THE EDITOR

Dear Mr. Morrison:

I hope this catches the deadline in time. I can use all the advertising I can get I will be happy to sell GCA memberships and I will leave out my copies of THE CHESSMAN in the hope that Florida players will join.

I always enjoy Atlanta tournaments. Haven't met an unfriendly Georgian yet. Definitely I will be making a strong attempt to attend Atlanta Congress. Only organic chem tests could hold me back.

Mr. Decker is a fine tournament director, and Royal Coach Inn is the best in the South. However, block ads (like those LPO used) were needed to boost attendance. If I hadn't specifically been looking for a tournament outside of Florida, I wouldn't have seen Atlanta Open since it was just another Ga. block. We have good players here, and will forward games.

Thanks  
Mark Solomon

---

## STATE OF THE G.C.A.

The most important accomplishment of 1977, was getting South Carolina to join us in the production and distribution of THE CHESSMAN.

The impact of this program will be most visible all along the S.C.-Ga. border. Georgians will not feel like strangers in S.C. and vice-versa. Think what this will do for tournaments in Clemson, Elberton, Augusta, Savannah, and Charleston.

The additional news and circulation will strengthen THE CHESSMAN, which will, in turn, facilitate our newstand program.

The subtle effect is to promote regional tournaments.

Recently offers have been made to both N.C. and Fla. If both states join in 1978, that will be sufficient to stem the national tide and keep Chess moving up in the south-east.

Bill Dodgen and I have been in almost daily contact in order to get the maximum benefit from this union.

In addition to the above, the GCA officers are carrying on an intensive campaign here in Atlanta from Chess Club to Chess Club and, literally from house to house. John Doyle, a local TV personality has been able to get us some TV and newspaper coverage and helped get magazines into newstands. I mention John only because he is a newcomer. Many other familiar names are hard at work in what is turning into a crusade here in Atlanta.

However, Atlanta is not our only responsibility, and you will see tournaments throughout the state in 1978.

I believe the 9th Southern Congress will be a huge success, and if you read this newsletter carefully I think you will agree.

We have made a strong bid for the 1979 U.S. Open and are working to secure the use of Corporate Capital for the G.C.A. which could make Atlanta an international city in the world of chess.

State of the G.C.A (Cont'd)...

THE CHESSMAN and the Atlanta Open have brought us a base of members in Florida, Alabama, and North Carolina. I believe that these bases, once firmly established, will continue to grow. In addition, we have a scattering of members all across the country on which we hope to build.

All of this must be taken in context. We are working in an environment which is within our National Organization, and it would be easy to get discouraged by the "obituary" issue of CL&R (Dec.1977), but I can assure you regardless of any national trend to the contrary, that the GCA is poised for a takeoff, and I expect to bring you a good report in May. Interestingly enough, the GCA has only 13 memberships which will expire during 12/77 and 1/78. With 30 tournaments advertised in this issue, we will gain 100 members from tournaments alone.

I suppose, like some, I could cry passionately for help, but it is because we have a program that such histrionics are unnecessary. Instead, just let me close by saying that any member you can get us now, really does some good, for our cost per member is dropping sharply. You can help us by putting on a tournament in your town, and anything you can do to encourage North Carolina and Florida to join us will especially do wonders for Chess in our region.

J.E. Morrison

White: Boris Spassky    Black: Viktor Korchnoi    (2nd Match Game)

1.P-K4, P-K3 2.P-Q4,P-Q4 3.N-QB3,B-N5 4. P-K5,P-QB4 5.P-QR3, BxN+ 6.PxB, N-K2 7.Q-N4,PxP 8. QxNP,R-N1 9.QxP,Q-B2 10.N-K2,QN-B3 11.P-KB4,B-Q2 12.Q-Q-3, PxP 13.B-K3,P-Q5 14.B-B2,0-0-0 15.NxQp, NxN 16.QxN,P-N3 17.B-R4,B-N4 18.Q-K4 BxB 19.RxB,R-Q4 20. BxN QxB 21.R-B3,K-N1 22.K-B1,R-Q7 23.R-B2,Kr-Q1 24.Q-B3, RXR+ 25.KxR, R-Q7+ 26.K-N3,Q-Q1 27. Q-K4,Q-N1+ 28.K-R3,Q-R1+ 29. K-N3,Q-N2+ 30. K-R3,R-Q1 31.P-N4,R-R1+ 32.K-N3,Q-R3 33.Q-N2,Q-R5+ 34. K-B3,R-Q1 35.Q-N3, Q-K2 36.P-N5,R-Q7 37.K-N4,Q-N2 38. QxP,R-N7+ 39. K-R3,R-B7 40.K-N4,Q-K5 41. Resigns

---

White: Viktor Korchnoi    Black: Boris Spassky    (3rd Match Game)

1. P-QB4,P-QB4 2.N-KB3,N-KB3 3. N-B3,N-B3 4.P-Q4,PxP 5.NxP,P-K3 6. P-KN3, Q-N3 7. N-N3,N-K4 8.P-K4,B-N5 9.Q-K2,0-0 10.P-B4,N-B3 11.B-K3,Q-B2 12.B-N2, P-Q4 13.P-K5,N-K5 14.0-0,BxN 15.PxP,PxP 16.PxB,P-QN3 17.QR-B1,P-B4 18.PxP ep, NxKBP 19.N-Q4,R-K1 20.Q-Q3,N-QR4 21.N-N5,Q-B3 22.B-Q4,N-K5 23.B-K5,B-R3 24.P-QR4,N-B5 25.Q-Q4,NxB 26.PxN,BxN 27.PxB,QxNP 28.P-B4,Q-B4 29.QxQ,NxQ 30. BxP+,N-K3 31.R-R1,P-QR4 32.BxR,RxB 33.QR-N1,P-R5 34.RxP,N-Q5 35.R-Q6, Resigns.

Games 1 and 4 were drawn, Korchnoi leads 3-1.

---



1977 SOUTH CAROLINA  
CLOSED CHAMPIONSHIP  
NOVEMBER 13, 1977

William McClain     Paul Tinkler  
(Notes by Tinkler)

- |    |       |       |
|----|-------|-------|
| 1. | N-KB3 | P-Q4  |
| 2. | P-KN3 | P-QB4 |
| 3. | B-N2  | N-QB3 |
| 4. | O-O   | P-K3  |
| 5. | P-Q3  | B-Q3  |
| 6. | QN-Q2 | KN-K2 |
| 7. | P-K4  | O-O   |
| 8. | N-K1  |       |

In order to play 9. P-KB4 followed by 10. PxP. Fischer has played 9. N-R4 in this position, rather than retreating the N to the back rank. Fischer's move seems more logical, since White plans to attack on the K side.

- |     |       |      |
|-----|-------|------|
| 8.  | ...   | R-N1 |
| 9.  | P-KB4 | B-B2 |
| 10. | P-K5  | P-B3 |
| 11. | PxPB3 | RxP  |
| 12. | N2-B3 | P-K4 |

This advance leaves the QP weak, but Black's pieces become activated. White's chances on the K side seem to have dissipated.

- |     |      |       |
|-----|------|-------|
| 13. | PxP  | NxP   |
| 14. | B-N5 | R-B2  |
| 15. | P-B3 | N5-B3 |
| 16. | Q-N3 |       |

Presumably to take advantage of the weak QP, but this is easily met.

- |     |      |      |
|-----|------|------|
| 16. | ...  | B-K3 |
| 17. | R-Q1 | Q-Q2 |

The Black Q steps out of the pin, threatens P-Q4, and B-R6 all in one move.

- |     |      |        |
|-----|------|--------|
| 18. | Q-R4 | N-B4   |
| 19. | B-B1 | P-Q5?? |

With this blunder, Black loses his initiative. Obviously, P-KR3 is mandatory.

- |     |       |       |
|-----|-------|-------|
| 20. | N-N5  | R-KB1 |
| 21. | NxB   | QxN   |
| 22. | B-R3? |       |

White returns the favor. Now he'll be forced to exchange his white squared B, leaving his K side insecure. Better is N-B3

- |     |       |      |
|-----|-------|------|
| 22. | ...   | Q-N3 |
| 23. | Q-B4+ | K-R1 |
| 24. | BxN   | RxB  |
| 25. | N-B3  |      |

Allows Black's mating attack, but nothing else seems to work either. For example, 26. N-N2 N-K4 27. Q-N3 N-B6+ 28. K-R1 BxP 29. PxP QxP 30. RxN RxR 31. B-B4 RxB 32. NxR QxN, winning.

- |     |          |       |
|-----|----------|-------|
| 25. | ...      | BxP   |
| 26. | K-R1     | Q-R4  |
| 27. | K-N2     | RxN   |
| 28. | RxR      | QxP+  |
| 29. | K-B1     | Q-R8+ |
| 30. | K-K2     | Q-N7+ |
| 31. | Resigns. |       |

M.Chappell (1843)  
O.Est nger (1619)

- |     |        |         |
|-----|--------|---------|
| 1.  | N-KB3  | P-Q4    |
| 2.  | P-Q3   | P-QB4   |
| 3.  | QN-Q2  | N-KB3   |
| 4.  | P-QN3  | P-KN3   |
| 5.  | B-N2   | B-N2    |
| 6.  | P-KN3  | P-QN3   |
| 7.  | B-N2   | B-N2    |
| 8.  | O-O    | O-O     |
| 9.  | P-K3   | Q-B2    |
| 10. | N-R4!  | QN-Q2   |
| 11. | P-KB4  | P-K3    |
| 12. | Q-K2   | N-K1    |
| 13. | BxB    | NxB     |
| 14. | P-K4   | QR-B1   |
| 15. | QR-K1  | P-QN4   |
| 16. | PxP    | PxP     |
| 17. | P-B5   | N-N3    |
| 18. | P-B6   | N-K3    |
| 19. | Q-K3   | P-B5    |
| 20. | B-R3!  | QR-K1   |
| 21. | Q-R6   | P-Q5    |
| 22. | N2-B3  | N-Q4    |
| 23. | N-N5!  | NxBP??  |
| 24. | QRxN!! | PxR     |
| 25. | BxP+   | RxB     |
| 26. | NxR    | Q-K2    |
| 27. | QxR+   | QxQ     |
| 28. | NxQ    | Resigns |
- The winner took 14min!

## THE 1977 SOUTH CAROLINA CHAMPIONSHIP

BY: John McCrary

The 1977 South Carolina Championship, played in Camden November 11th - 13th, is now history. In a striking upset, Paul Tinkler, a third-year law student at the University of South Carolina, has become the new South Carolina champion. Tinkler, rated only 1691, defeated three higher rated players, Klaus Pohl (2094), Marvin Chappell, Jr. (1843), and William McClain (1819), on his way to a perfect 5-0 score. Pohl took second with 4-1, and Chappell tied with Robert Webb (1st B) and Lindsay Blanks (1st C) for third place with 3-2 scores.

In the Booster section, Marion Mahaffey, James West, and Jack Berry all tied at 3-2 for first place. Mahaffey took the first-place trophy on tiebreak. West and Berry had to settle the second-place trophy between themselves after three tiebreak systems failed to differentiate them. West sportingly offered Berry the trophy, in return for which Berry gave West part of the cash prize. The evenly matched nature of this section is shown by the fact that only 1½ points separated first from last place.

In the reserve section, Richard Van Hall took first place with a perfect 5-0. Irving Hwang took second with 4-1, followed by Kenneth Simpson at 3½ points.

Now that the dust has settled, the 1977 South Carolina Championship has to be regarded as a success. The turnout of 40 players (14 championship, 8 booster, 18 reserve), was moderate, but included 10 brand-new USCF members, plus renewals by some inactive players. Of the 40 players, 39 completed their five game schedules, braving sub-freezing temperatures and iced-over windshields to return for Sunday morning games. (A bad cold snap hit during the weekend). The players were polite and sportsmanlike, making life a little easier for the two T.D.'s.

Tournament conditions in Camden were satisfactory, with plenty of room in the spacious recreation center there. The chief tournament director was John McCrary of Columbia, newly certified and directing his second tournament. McCrary had the able assistance of an experienced T.D., Richard Stucker of Camden.

Play managed to start on time at 8:00 pm Friday with only the Championship section in play. Tinkler, the fourth rated player, began his drive by defeating Doug Taffinder of Charleston. Pohl defeated Otto Estenger, Jr. in 50 moves in a game that lasted until long after midnight! Poor Otto had not yet had supper, but managed to find a place open after the game.

On Saturday morning, the Booster and Reserve sections started play, plagued by a shortage of clocks. Thirteen of the 18 Reserve players were unrated, so nothing was predictable here. Meanwhile, in the Championship section's second round, Tinkler and Pohl were involved in a protracted struggle. Pohl had blundered, and Tinkler was pressing his advantage relentlessly. The next round was delayed for an hour to allow this game to finish. Finally, just as the T.D. arrived to adjourn the game, Pohl resigned on the 61st move. Suddenly, players began to speculate whether a class B player might become state champion.

On Saturday afternoon, Tinkler continued his astonishing drive by defeating Marvin Chappell, Jr., the number two player. Over in the Reserve section, after two rounds, things looked normal, with the four top-rated players all having 2-0 scores. In the wild Booster section, however, only Jack Berry had survived two rounds with 2-0, while no player had a zero score.

The Championship section had Saturday night off. In the Booster section, Phillip Jackson defeated Jack Berry to take the lead with 2½ points. In the Reserve section, Richard Van Hall and Robert Smith emerged with 3-0 scores to set the stage for their fourth-round battle the next morning.

## The 1977 South Carolina Championship (cont'd)....

On Sunday morning, Tinkler defeated third-ranked William McClain to become the almost certain champion. In the Booster section, Philip Jackson, the top-ranked and highest scoring participant, overslept and arrived an hour late. His opponent, James West, in his typical display of good sportmanship, offered to play the game anyway. West was rewarded with a victory. In the Reserve section, Van Hall defeated Smith to assume the clear lead.

The business meeting of the SCCA took place promptly at 1:00 pm Sunday, with Vice-President Marion Mahaffey presiding. The members present voted unanimously to accept the nominating committee's slate of new officers.

In the fifth round, Tinkler blundered a piece on the fourth move, only to regain it through his opponent Claude Corbett's comparable blunder. The balance thus restored, Tinkler went on to defeat Corbett for a perfect 5-0 score. In the Booster section, Berry, West, and Mahaffey all drew their last-round games to tie for first place. Mahaffey had drawn four of his five games, yet finished in first place! In the reserve, Richard Van Hall defeated Gregory Martin to complete his perfect sweep.

In concluding this account, thanks should be offered to Leroy Lewis of Columbia and Richard Stucker of Camden. Leroy served as treasurer of the tournament -- no small job -- and yet still found time to play in the Booster section. Leroy had to interrupt his own last-round game for extended periods to pay out the cash prizes, yet never complained. Dick Stucker worked with Leroy in arranging the tournament hall, in addition to his directing duties.

The game scores turned in by the players are still in this writer's possession. Anyone wishing a copy of any particular game for any reason should write to: John McCrary, 1520 Senate Street, Apt. 18H, Columbia, S.C. 29201.

\*\*\*\*\*

### YOUTH ON THE ROAD

by Lindsay Blanks and Jim West (as told by Jim West)

We are writing this article to let people know what some Junior Members of the USCF do, and to share our thoughts with you. We are both High Schoolers and belong to the Charleston Chess Club. A majority of our time is spent with school and we cannot donate much time to Chess; however, we try to participate in as many weekend tournaments as possible.

Due to the fact that there are few tournaments in Charleston, We have to travel most of the time. Between us, we share expenses and cut down on the cost of the trip by such. At the present, I have a driver's license, (remember to drive at 55, Jim, and you may continue to have one! Ed Note) So, I drive to as many tournaments as possible with Lindsay. We are real close friends. A friend of ours, Otto Estenger, Jr. will hopefully be our new traveling companion.

We have learned S.C. much in our travels that we would bore you by telling everything we have to say. We will keep our article short. In our travels, we have met many new and fascinating people. Recently, we went to Atlanta to play in the Atlanta Open, and it was our first time there. We were overcome to see so many young and quite a few older people there. We met people who would not hesitate to help us in anyway. Friendly people such as Mr. Morrison, the President of the GCA; Mr. Thad Rogers, a real likeable person; and Mr. Mike Decker, always ready to help also, and some of the players were real friendly too. Such as Justin Morrison, Mark (The Shark?) Coles, Billy Noyes, and James Vermilya. We also met a special person, Alison Bert. We were



## YOUTH ON THE ROAD (Cont'd)...

.....amazed at her ability and especially her golden personality. Lindsay's nickname for her is "sugar" because she is so sweet, and I call her "something special."

We would like to see more youths in S.C. get involved in Chess and especially see some of the older, more experienced players take some of their time to help the younger player out with his/her game if the younger players asks. We have seen too many strong adults come for the prize money alone and a few who would come to challenge anyone to play Blitz Chess for money. Wouldn't it make some of those "Hustlers" satisfied to help a young man with his game instead of taking his money? (How about it, Chess Fans?)

Lindsay and I would like to see some events such as simultaneous exhibitions, lectures, and Blitz Tournaments to go along with a good tournament (something for promoters to consider) We would like to say more, but in the interest of others, we will not take up more space. Thanks again to all of those interest in Youth Chess. Also, we appreciate the discounts given to Juniors, and most certainly encourage them.

---

## U.S. ELEMENTARY SCHOOL CHAMPIONSHIP

The 3rd Annual U.S. Elementary School Chess Championship will be held in May, 1978, either here in Atlanta or in Montana. To help secure the tournament in Atlanta for our children in the Southeast, we need to raise \$200.00 to contribute to the usual prize fund of \$350 and 25 trophies. The \$200 will go to increase the cash prizes. If we can raise the money, it would insure receiving this fine tournament. Anyone that would like to make a tax deductible donation may send their check to Steve Schneider-3135 Buford Hwy.-Apt#1-Atlanta, Ga. 30329.

\*\*\*\*\*

## LOCATION WANTING A CHESS CLUB

The Tucker Recreation Center (938-5383), site of the recent Tucker Classic and location of an upcoming Junior High School Tournament, is looking to develop a Chess Club one evening. If you are interested call the center and speak to Jane.

\*\*\*\*\*

## ACROSS SOUTH CAROLINA AND THE USA

SC Players win in N.C. Tournaments: James Smith of Spartanburg (1314) and Joseph Selby (1391) of Kingsport, Tn. Both scored  $2\frac{1}{2}$  points to tie for 1st in the second section of the Fall Colorfest 1, held in Brevard N.C. on October 15th. In the top section, William Bickham of Asheville, N.C. (1902) won with a score of 3-0. In the third section, Tom Galloway (1137) and Wallis Pallas (Unr.) of Saluda tied for first with  $2\frac{1}{2}$  points. 22 players participated in this event, directed by Tom Galloway of the Brevard, North Carolina Chess Club.

\* \* \* \* \*

S.C. State Champion, Fred Allsbrooks (2001) won the top section of the Fall Colorfest II, held on October 16th, with a 3-0 score. Unrated Maurice Mooney of Brevard, N.C. won the second section, also with a 3-0 score. All players are to be thanked for donating an extra 50¢ in EF's in order to make two Sections out of Ten players, with fair prizes for both sections. Tom Galloway also directed this event.

\* \* \* \* \*

Bob Smith, a 1300 S.C. player won the 14 player Florence Open in August. Bob's victory was a stunning upset as he beat several higher rated players including Harry Abrams (1611) the top seed. However, the complete story and crosstable was not available at press time as your editor misplaced the information. Anyone wishing a complete crosstable or other details, please contact Greg Martin of Florence at 1019 West Creek Road, Florence, 29501.

\* \* \* \* \*

Marvin Chappell, Class A Player, went 22-0 in a simul exhibition at the Rock Hill Mall (21 bypass, Rock Hill). Many players and the public were exposed to the USCF and 1 USCF membership was sold.

\* \* \* \* \*

Marvin Chappell won the top Quad of the 2nd Chess (0) Quads, winning over Otto Estenger (1619), then Grady Brown (1848) and finally over Harold Brandon (1418). Andrew Penleton won the second section with  $2\frac{1}{2}=1\frac{1}{2}$  drawing a third round game with Jeremy O'Conner, then Chriss Wiggins won in the bottom section with 2-1. Five new SCCA memberships were sold and two new USCF memberships were sold, making the Rock Hill Chess Club a builder (10 plus USCF memberships sold).

\* \* \* \* \*

FROM CHARLESTON: The under 1300 (TD Barbara Bates) was won by Audie DuPuis, who received a Pewter Cup. 2nd was George Weisbrad. Sponsored by the Chess House. The Charleston Naval Base Championship (TD Joan Schlich) was played August 25-26, and was won by John Lawler. 2nd was Robert T. Evans and Third was Andrew Tucker, sponsored by the Chess House. The 6th Naval District (Sept. 6-8) TD Joan Schlich) was won by Sid B. Pickard. 2nd was Boniface Cardenas. Both went on to the Navy East Coast Championship. Sponsored by the Chess House. The Navy East Coast Championship (Sept 9-11) TD Joan Schlich. Was won by James L. Childress. 2nd, 3rd & 4th were won by Roger E. Rowland, Boniface Cardenas & Sid Pickard, Respectively, sponsored by (Yes, you guessed it, The Chess House. (The Chess House is not the Charleston Chess Club, but a part of it that sponsors tourneys in between the Club's regular SCCA and USCF ones.) The Labor Day Open, directed by none other than Joan Schlich (active isn't she!) Was won by Edward McCauley (1721) with  $5\frac{1}{2}-1\frac{1}{2}$ . 2nd was Lindsay Blanks (1431) with 5-1 & 3rd was Larry Crawford (1674) with  $4\frac{1}{2}-1\frac{1}{2}$ . Top "C" was Doug Taffinder (1536) with 3-3. Top D,E, was Brick (?) Bates (1394) with  $3\frac{1}{2}-2\frac{1}{2}$  and top unrated was George Weisbrad with a score of 2-4.

\* \* \* \* \*

ADDITION TO S.C. LIST OF CHESS CLUBS: Lancaster Chess Club Thursday Nights, 7:00 pm to 11:00 pm. USCF - Lancaster, Starr Hall. President Terry Young, V.P. Dick Van Hall Sec/Treas. Fred Miller, TD Marion Mahaffey.

# PALMETTO CHESS CLUB

by John McCrary

The Palmetto Chess Club of Columbia is alive, well, and actively seeking new members. For those who may not know, the club meets at the Blue Cross - Blue Shield Building at the intersection of Alpine Road and I-20 (First I-20 exit past Two Notch Road) on Thursday nights at 7:00 pm.

While the membership chooses to concentrate on playing the royal game itself and tends to shun business meetings and projects, the vigor of the growing club has been expressed recently in at least four areas. Currently a membership drive is underway to attract chessplayers from the metro area and surrounding towns to participate in the Palmetto Club by weekly attendance. Increased tournament activity is projected as a result. Second, the club has recently joined with the Camden Club in sponsoring the 1977 South Carolina Championship tournament. Third, the club got publicity in the Columbia newspapers for National Chess Day. Finally, the Palmetto Club has a deep interest in stimulating high school chess. Unsuccessful attempts have been made to locate and offer assistance to Columbia area high school chess clubs. Interested students or teachers reading this article are urged to call 771-0949, for further information.

Chess is the keynote of all meetings. Players of assorted levels of strength regularly attend, and advocates of serious games coexist with players seeking speed games. Several members have a fascination for unorthodox chess, with a four-handed set making an occasional appearance. At least one member collects rare chess books and will obligingly bring one for perusal at the slightest indication of interest. New members and visitors are encouraged to attend.

## SOUTH CAROLINA CHESS ASSOCIATION TREASURER'S REPORT FOR 1977 (By H.M. Kelley)

<u>Expenses</u>	<u>1975</u>	<u>1976</u>	<u>1977</u>
NEWSLETTER	\$492	\$439	\$284.02
TOURNAMENTS	----	----	30.98
USCF AFFILIATION	----	60(3 yrs)	-----
MEMBERSHIP DRIVE	45	60	-----
POSTAGE	35	42	13.00
MISCELLANEOUS	36	16	6.22
			\$334.22

BALANCE FORWARD FROM 1976 SCCA ACCOUNT	\$202.28
BALANCE FORWARD FROM 1976 INCENTIVE	269.55
RECEIPTS FOR 1977 INCLUDING \$64.00 FOR USCF DUES	536.40
1977 BANK DR.	1,008.23
SCCA BANK CR TO USCF	64.00
SCCA 1977 BANK CR	334.22
INCENTIVE FUND 1977 BANK CR	187.00
BANK BALANCE NOV. 1977	\$423.01

### INCENTIVE ACCOUNT

<u>Expenses</u>	<u>1977</u>	
Prizes to Clubs	\$100.00	BALANCE SCCA ACCOUNT \$356.57
Tourn. Support	50.00	BALANCE INCENT. ACC'T 66.44
Telephone	37.11	\$423.01
	\$187.11	
MEMBERSHIPS TO SCCA	16.00	
	\$203.11	

Respectfully submitted,  
H.M. Kelley, Treasurer

##### NOTES FROM THE PRESIDENT'S DESK #####

---

Elsewhere in this Issue I have written an editorial concerning the inclusion of the SCCA Newsletter in THE CHESSMAN. Please read it carefully...and when you arrive at the section where I call upon the members to assist the SCCA, your consideration will be appreciated.

A tip of the hat to Paul Tinkler on his stunning uphill victory in the 1977 S.C. closed championship recently held in Camden. Paul's victory can serve as a lesson to all our young players..never give up. I recall a tournament a few years ago where Paul had to be less than happy with his results. Although disappointed then, he learned from his mistakes and look at him now!!! Congratulation Champ!

We're still looking for bids for the '78 S.C. closed Championship and S.C. Junior Championship. The National Open, one of the USCF'S more significant tournaments, will be held in Charleston in March. Read the details in this issue and plan now to attend. The 1978 Carolina's open will be held in Clemson, June 24-25th, watch for details and plan to attend. A new tournament has been agreed upon by the SCCA and the GCA, the Georgia-Carolina Open. This will be held in Augusta, Georgia at the Embassy Towers Hotel, April 14-16th. This year's event will be conducted by the GCA. The SCCA will be the host association in 1979. Plan now to attend this new event.

Until next issue..Have fun and play chess  
William H. Dodgen

---

NOTES FROM THE EDITOR'S TYPEWRITER:

GUEST EDITORIAL BY PRESIDENT DODGEN OF THE SCCA:

SCCA - A new look demands additional responsibility. The SCCA has signed an agreement with the GCA to print and mail our Newsletter in THE CHESSMAN. So what does all of this mean? For you, the individual SCCA member, this will result in 6, not 4 newsletters a year. Additionally, you will have the benefit of receiving the Georgia news at the same time, plus a combined GA-SC tournament announcement section. In short, you will be better informed of Chess activities in two states areas, have more games presented, receive mor articles and all of this at a greater frequency and on a timed schedule which is dependable. For promoters, when you announce a tournament, this information will reach over a 1000 chessplayers, rather than just over 200. However, YOUR HELP WILL BE NEEDED!!!

The Cost of this improvement per year and/or member, will exactly equal the SCCA Jr. members IP dues, and allow but one dollar to go to the SCCA treasury from adult memberships. Now, when postal rates go up, and they will, we will lose money on our Jr. members. Therefore, the officers have two requests of you. First, we would appreciate a donation of any amount; be it one dollar, two dollars, or whatever you would be willing to contribute. Second, we ask that each club add a \$1.00 surcharge to go to the SCCA in at least one tournament within the next year; more if you are willing..your cooperation in these areas will insure a successful 6 issues a year without our association running out of operating funds. Please help.

WHD.

CHESS CLUBS: Remember that more newsletters require more news from each of you and at a greater frequency. The Editor would also appreciate reports to him be typed if possible to speed up inclusion of the new in THE CHESSMAN.



JOIN THE SOUTH CAROLINA CHESS ASSN.

**BENEFITS:** You will receive the Newsletter six time a year, with new or upcoming tournament announcements, results of tournaments held, and articles of interest. The SCCA offers a special rate for those joining both the USCF and the SCCA. The SCCA Newsletter is compiled by the SCCA, the recognized USCF affiliate for the State of South Carolina, the SCCA sponsors the Annual State Championship, the Annual Junior State Championship, and other events. Membership is open to anyone upon payment of the yearly dues to the secretary.

SCCA OFFICERS

President: William Dodgen - 2008 Robin Road - North Augusta, S.C. 29841 Ph:(803)279-6881

Vice President: Marion Mahaffey - 1207 Memorial Pk Rd. - Lancaster S.C. 29720  
Ph: (803) 283-2312

Secretary: Charles Braun - 7 Winthrop Dr. - Aiken, S.C. 29801 Ph:(803)648-5446

Treasurer: Harold Kelley - 811 Rhododendron Pl SE - Aiken, S.C. 29801  
Ph: (803) 648-0130

Editor: Stan Vaughan - 114 Hazelwood Dr. - Clemson S.C. 29631 PH: (803) 654-5651

Tournament Clearinghouse: Stan Vaughan - Box 2548 Univ. Sta. - Clemson, S.C.  
Ph: (803) 654-5651

Send membership dues to Charles Braun, New Items to Stan Vaughan, address changes to Charles Braun.

-----  
Send SCCA Membership Application To: Charles Braun, 7 Winthrop Drive, Aiken,S.C. 39801.  
Make checks payable to the SCCA.

NAME \_\_\_\_\_ INDICATE NEW OR RENEW (SCCA) (USCF) (please specify)

ADDRESS: \_\_\_\_\_ CITY \_\_\_\_\_ STATE \_\_\_\_\_ ZIP \_\_\_\_\_ PHONE: \_\_\_\_\_

BIRTHDATE \_\_\_\_\_ ENCLOSED IS \_\_\_\_\_ \$4.00/1 yr. - \$7.00/2yr SCCA \_\_\_\_\_

\_\_\_\_\_ \$3.00/1yr. Jr. SCCA (Under 19 at expiration) \_\_\_\_\_ \$16.00/1yr. USCF & SCCA

\_\_\_\_\_ \$2.00 Spouse (Family with 1 full membership already) (Participation SCCA  
membership with no Magazine)

\_\_\_\_\_ \$1.00 Participating Junior SCCA Membership (Under 19 at expiration, no magazine)

\_\_\_\_\_ \$5.00/yr. participating USCF, Regular Jr. \_\_\_\_\_ \$9 Regular Junior, Reg SCCA

MAIL BALLOT:

All Ballots must be postmarked before February 1st, 1978, in order to be valid and must include signature and SCCA expiration date.

1978 SCCA OFFICER ELECTION

(Any write-in candidate vote must be accompanied by a letter from the candidate stating his acceptance to take the office upon election and that he would be willing to fulfill the required duties of the office.

VOTE FOR ONE:

PRESIDENT

WILLIAM DODGEN \_\_\_\_\_  
OTHER ( ) \_\_\_\_\_

VICE PRESIDENT

MARION MAHAFFEY \_\_\_\_\_  
OTHER ( ) \_\_\_\_\_

SECRETARY

CHARLES BRAUN \_\_\_\_\_  
OTHER ( ) \_\_\_\_\_

TREASURER

HAROLD KELLEY \_\_\_\_\_  
OTHER ( ) \_\_\_\_\_

BY-LAW CHANGE ELECTION

Vote for in order of preference with a 1,2, and 3 (1, first preference, etc.)

- \_\_\_\_\_ (A) To empower the President of the SCCA to appoint the USCF delegate, voting member, and alternates.
- \_\_\_\_\_ (B) That the President of the SCCA become the USCF delegate and the Vice-President of the SCCA become the voting member; with the alternates appointed by the President of the SCCA.
- \_\_\_\_\_ (C) That the President of the SCCA appoint the USCF delegate, voting members and alternates as recommended by the SCCA Nominating Committee.

Signature of Voter: \_\_\_\_\_ SCCA Expiration Date: \_\_\_\_\_

MAIL BALLOT TO: Charles Braun, 7 Winthrop Drive, Aiken, South Carolina 29801.  
If you do not want to remove the Ballot from the newsletter, a xeroxed copy of it or hand printed facsimile will suffice, so long as all the required information is listed on the Ballot.

In order for Ballots to be valid, remember that your SCCA membership must be good thru the end of January, 1978.

\_\_\_\_\_

# TOURNAMENTS

JANUARY 7, 1978 (S.C.)

## DIXIE CHESS CLASSIC

5-SS, 40/90, at the Holiday Inn of Clemson, South Carolina, U.S. 123 & 76. EF: \$9.00 if received by January 1, 1978, \$13.00 at the door. REG: Ends at 9:30 A.M., January 1978. RDS: 10-3-8; 10-3. ENT: Stan Vaughan, Box 2548, University Station, Clemson, South Carolina, 29632.

---

JANUARY 7 - 8, 1978 (GA.)

## 1978 ATLANTA WINTER CONGRESS

45/2, 5-SS, Ramada Inn, 2960 Northeast Access Road, I-85 at Shallowford Road, Atlanta-Chamblee, Georgia, 30341. EF: \$14.00 if received by January 1st; \$15.50 at site. (\$\$ based on 65 entries). Prizes: \$200.00 - 100.00 - 50.00; Classes A, B, C, D, E/Unr. each \$70.00, MORE PER ENTRIES. REG: Ends at 9:45 A.M. RDS: 10-3-8; 10-3. GCA membership required, other states ok. Hotel Rates: \$14.50 - 17.50. Enter: International Chess Imports, 3055 General Lee Road, Macon, Georgia, 31204. NS.

---

JANUARY 8, 1978 (GA.)

## 5TH ATLANTA QUADRANGULAR

40/80, Ramada Inn, 2960 Northeast Access Road, I-85 at Shallowford Road, Atlanta-Chamblee, Georgia, 30341. EF: \$5.50 if received by January 1st; \$7.00 at site. Prizes: Trophy to 1st each section; 3 - 0 scores gets free G.C.A. Membership. REG: Ends at 9:45 A.M. RDS: 10:00 - 1:30 - 5:30. G.C.A. membership required; other states ok. Enter: International Chess Imports, 3055 General Lee Road, Macon, Georgia, 31204. NS.

---

JANUARY 8, 1978 (GA.)

## CHESS SIMULTANEOUS

Tucker Recreation Center, 4316 Church Street, Tucker, Georgia. Call 938-5383; Mike Decker will give a Simo. The event is free and open to the public.

---

JANUARY 14, 1978 (S.C.)

## CLEMQUADS # 1

3-RR, 40/90, Holtzendorff YMCA, Seneca Rd., Clemson, South Carolina, 29631. EF: \$6.00 \$12.00 to 1st each quad. SCCA membership required of S.C. residents. (\$4, Jr. \$3), other states ok. 50¢ off to C.U. CC members. (\$10/yr.) USCF & EF: \$18, Jr. \$12, part Jr. \$8.50. REG: 9:30 - 10:00 A.M.; RDS: 10:15 - 2:00 - 6:00 (Earlier if agreed) Entry: Stan Vaughan, Box 2548 University Station, Clemson, South Carolina, 29632.

JANUARY 15, 1978 (GA)

I.C.I.'s 10TH STEAK & BOOKS

40/80 3-SS in 8-man sections, Bonaza Sirloin Pit, 175 Emery Highway near Macon Coliseum, Macon, Georgia, 31204. EF: \$6.50 if received by January 8th; \$7.50 at site. Prizes: \$20.00 - \$10.00 - \$5.00 in books each section. Top Sirloin Steak Dinner to each entrant. Georgia Chess Association required (\$4.00/year, \$7.00/ 2 years), other states ok. REG: Ends at 10:00 A.M. RDS: 10:15 - 1:30 - 4:30. Enter: International Chess Imports, 3055 General Lee Road, Macon, Georgia 31204. NS.

---

JANUARY 15, 1978 (GA)

ATLANTA ELEMENTARY / HIGH SCHOOL CHAMPIONSHIP

4-SS; RDS 1 & 2-30/30; RDS 3 & 4 - 40/1; YMCA (Downtown) 145 Luckie Street, Atlanta, Georgia. Open to all currently enrolled in grades 1 thru 12, but only a student residing in or going to school in the 15 County Metro Atlanta area can receive top trophy and title. EF: High School \$7.00; Elementary \$5.00; Advance entry received by January 7, 1978, \$2.00 less. Any player over 1799, who completes all 4 rounds, receives free entry. Fully refundable if notified before close of registration. Prizes: BOE Trophies to top players and teams of 4. REG: Room 223 YMCA 9:00 - 9:15; RDS: 9:30 - 11:00 - 1:00 - 3:00. Advance Entries: Steve Schneider, 3135 Buford Hwy., Apt.#1, Atlanta, Georgia 30329. GCA & USCF memberships required.

---

JANUARY 18, 1978 (GA)

1978 NATIONAL CHESS LEAGUE

6-SS The top team in each division and a wild card (non-division winner with best record) making up a 4 team, 2 round playoff. 1st round set for January 18, 1978. Atlanta Kings are scheduled to play all of their games in the Peachtree Center Complex. Anyone of "A" strength and above should indicate their interest in participating on the team by contacting either the team's captain, Lou Martin: office phone 261-7441 or last year's team captain, Mike Decker: home phone 634-9940. The Kings are still looking for additional financial support on the availability of another WATS line. If your company would be interest in making a tax free contribution, contact Steve Schneider at (office) 894-5323.

---

JANUARY 21, 1978 (S.C.)

CLEMQUADS # 2 - (SAME DETAILS AS CLEMQUADS #1)

---

JANUARY 21 - 22, 1978 (GA)

1978 CLARKE COUNTY OPEN

5-SS, 45/2, Days Inn, 2741 Atlanta Highway, (U.S.78 & U.S. 29) Athens, Georgia, 30601. EF: \$13.50 if received by January 14th; \$14.50 at site. Prizes: Cash based on 40 entries \$100.00 - 50.00, Classes A, B, C, D, E/Unr. each \$50.00; more per entries. GCA membership required (\$4/yr. & \$7/2 yrs.) other states ok. REG: Ends at 9:45 A.M. RDS: 10:00 - 3:00-8:00; 10:00 - 3:00. HR: \$10.00 - \$13.00 - \$16.00. Enter: International Chess Imports, 3055 General Lee Road, Macon, Georgia 31204. NS.



JANUARY 21, 1978 (GA)

1978 ATLANTA JUNIOR HIGH SCHOOL CHAMPIONSHIP

4-SS, 30/30; YMCA (Downtown) 145 Luckie Street, Atlanta, Georgia, Phone: 525-5401; Open to all currently enrolled in grades 1 thru 9, but only a student residing in or attending a school in the 15 County Metro Atlanta Area can receive the top trophy and title. EF: \$7.00, Advance entry if received by January 13, 1978, \$2.00 less; \$1.00 off entry fee of each player on a team of 4 from the same school. (Example: advance entry team of 4 is \$16.00) Entry fee full refundable before close of registration. Prizes: Depending on entries, trophies to top players and teams of 4. Also free entries to Georgia High School Championship. REG: Room 223 YMCA 9:00 - 9:15. RDS: 9:30 - 11:00 - 1:00 - 3:00. Advance Entry: Steve Schneider, 3135 Buford Hwy, Apt.#1, Atlanta, Georgia 30329. GCA & USCF Memberships Required.

---

JANUARY 21, 1978 (S.C.)

3RD SATURDAY QUADS

Starr Hall, U.S.C. Lancaster, South Carolina, REG: 8:30 - 9:30 A.M., EF: \$5, RDS: 10:00 - 1:30 - 5:00; \$15.00 to 1st each Section.

---

JANUARY 22, 1978 (GA)

THOMASVILLE QUAD - NO. 10

3-SS in 6-man sections, 45/90, Thomas County Federal Building at the corner of Remington & Dawson Streets, Thomasville, Georgia, 31792. EF: \$4.50 if received by January 15th; \$5.50 at site. Prizes: Trophies to Top 2 each section. GCA membership required (\$4/yr, \$7/2 yrs), other states ok. REG: Ends at 9:45 A.M. RDS: 10:00-1:30 - 4:30. Enter: International Chess Imports, 3055 General Lee Road, Macon, Georgia, 31204. NS.

---

JANUARY 28, 1978 (S.C.)

CLEMQUADS # 3 (SAME DETAILS AS CLEMQUADS # 1)

---

FEBRUARY 4, 1978 (S.C.)

TIGERTOWN TORNADO

4-SS 40/1; Holtzendorff YMCA, Seneca Road, Clemson, South Carolina 29631; EF: \$6, SCCA mem. required (\$4, Jr. \$3), USCF & EF (\$18, Jr. \$12, part. Jr. \$8.50), 50¢ off to C.U.CC members (\$10/yr) \$\$ (Based on 30 entries) 40-20, top under 1800, 1400, Unr., each 10. REG: ends 9:30 A.M. RDS: 10-12:30-3-5:30. Enter: Stan Vaughan, Box 2548 University Station, Clemson, S.C. 29632.

FEBRUARY 4 - 5, 1978 (GA)

GEORGIA HIGH SCHOOL CHAMPIONSHIP

5-SS, 45/2, YMCA, 145 Luckie Street, N.W., Atlanta, Georgia. In 2 Sections.  
Championship: Open to students in grades 1-12. EF: \$5.00. Trophies to top 4, top C, D, Upset. Titles of Georgia High School Champion and Georgia High School Champion Team, and related trophies will be awarded only to Georgia residents.  
Novice: Open to grades 1-12 rated under 1200 or unrated. EF: \$2.00. Trophies to Top 4. Both: Georgia Chess Association membership required. Trophies to top 2 teams (teams of top 4 scores). Novice section is not USCF rated and does not require USCF membership. REG: 8:30 - 9:30 AM. RDS: 10:00 - 3:00 - 8:00; 9:00 - 2:00.  
Enter: Georgia Chess Association, 4153 Wesley Club Drive, Decatur, Georgia 30034.NS.

---

FEBRUARY 11, 1978 (S.C.)

SCCA 2ND SATURDAY QUADS

3-RR Holtzendorff YMCA, Seneca Rd., Clemson, South Carolina, 29632, EF: \$6 SCCA mem required (\$4, Jr.\$3), USCF & EF (\$18, Jr.\$12, part,Jr. \$8.50) 50¢ off to CUCC mems. (\$10/y) \$\$ prize to 1st each section, 3-0 score gets free EF to next SCCA 3rd Saturday Quad.

---

FEBRUARY 18, 1977 (S.C.)

SCCA 3RD SATURDAY QUADS

(SAME DETAILS AS ABOVE)

---

FEBRUARY 18, 1977 (GA)

THOMASVILLE QUICK SWISS NO. 11

3-SS in 6-man sections, 45/90, Thomas County Federal Building at the corner of Remington and Dawson Streets, Thomasville, Georgia 31792. EF: \$4.50 if received by February 11th; \$5.50 at site. Prizes: Trophies to the Top 2 each section. G.C.A. membership required (\$4/yr.,\$7/2yrs.) other states ok. REG: Ends at 9:45 A.M. RDS: 10:00 - 1:30 - 4:30. Enter: International Chess Imports, 3055 General Lee Road, Macon, Georgia 31204. NS.

---

FEBRUARY 19, 1978 (GA)

1ST ATHENS QUADRANGULAR

3-RR 40/80 Days Inn, 2741 Atlanta Highway, U.S. 78 and U.S. 29, Athens, Georgia,30601. EF: \$5.50 if received by February 12th; \$7.00 at site. Prizes: Trophy to 1st each section; 3-0 score get free GCA Membership. G.C.A. membership required (\$4/yr.\$7/2yrs.) other states ok. REG: Ends at 9:45 A.M. RDS: 10:00 - 1:30 - 4:30. Enter: International Chess Importst, 3055 General Lee Road, Macon, Georgia, 31204. NS.

FEBRUARY 19, 1978 (GA)

I.C.I.'S 11TH STEAK AND BOOKS

3-SS in 8-man sections, 40/80, Bonanza Sirloin Pit, 175 Emery Highway near Macon Coliseum, Macon, Georgia 31204. EF: \$6.50 if received by February 12th; \$7.50 at site. Prizes: \$20.00 - 10.00 - 5.00 in books in each section; Top Sirloin Dinners to each entrant. G.C.A. Membership required (\$4/yr.\$7/2yrs.) other states ok. RDS: 10:15-1:30 - 4:30. REG: Ends at 10:00 A.M. Enter: International Chess Imports, 3055 General Lee Road, Macon, Georgia 31204. NS.

---

FEBRUARY 19, 1978 (GA)

1978 GEORGIA ELEMENTARY SCHOOL CHAMPIONSHIP

4-SS 30/30; First Georgia Bank, 2970 Peachtree Road, Atlanta, Georgia. Open to all currently enrolled in grades 1 - 6, but only a Georgia resident may receive the top trophy and title. EF: \$6 at site, if received by February 13, 1978, \$2.00 less. \$4 reduction in entry fee if a team of 4 enters from the same school. \$8 reduction in the entry fee for the second team of 4 from the same school. USCF and GCA required. Prizes: Trophies to top players and teams of 4. Free entry fee to U.S. Elementary Championship. REG: Lobby 2970 Peachtree Rd., 9:15 - 9:30 A.M. February 19, 1978. RDS: 9:45 - 11:00 - 1:15 - 3:00. Advance Entries: Steve Schneider, 3135 Buford Hwy Apt # 1, Atlanta, Georgia 30329.

---

FEBRUARY 25, 1978 (GA)

TOCCOA FALLS OPEN

4-SS 40/80. Seby Library, Toccoa Falls College, Toccoa, Georgia 30577. EF: \$6 if received by February 18, 1978, \$9 later, GCA mem required of GA residents \$\$ (Based on 30 Entries) 45-30-20, B,C,D,E,Unr each 15. Free entry if joining USCF for first time. Enter:Stan Vaughan, Box 2548, University Station, Clemson, South Carolina, 29632, REG: 9-9:45 AM. RDS: 10-1-4-7.

---

March 4-5, 1978 (GA)

9TH SOUTHERN HS CHAMPIONSHIP

6-SS, Sheraton Inn, Atlant Airport, 1325 Virginia Avenue, Hapeville, Georgia. Open to all HS students in AL, AR, FL, GA, KY, LA, MS, NC, SC, TN, or VA. EF: \$9 - 11. \$\$ 300 & trophies. REG: 9 - 10. ENT: GCA, 4153 Wesley Club Drive, Decatur, Ga. 30034. NS. In 2 Sections: Championship: 40/100. \$\$ (in expenses to Nat. HS Champ) 150-100-50; trophies to top 5, top 4 4-man teams (top 3 teams must play in Nat. HS to receive prize). Novice: 40/80. Open to all under 1400 or Unr. Trophies to top 6, top E, top 4 4-man teams. Both, EF: \$9, if mailed by 2/24; \$11 at site. GCA mem req. (\$4), other states ok. \$2 off EF if joining GCA plus USCF (Reg. member). HR: 22, up to 4 in room. RDS: 11-3:30-8; 9-1-5.

March 4 - 5, 1978 (GA)

9TH SOUTHERN CONGRESS

5-SS, Sheraton Inn - Atlanta Airport, 1325 Virginia Avenue, Hapeville, Georgia.  
REG: ends 9 AM ENT: GCA, 4153 Wesley Club Drive, Decatur, Georgia 30034. NS.  
In 2 sections: Open, 45/2. EF: \$12.50, if mailed by 2/24; \$15 at site. \$\$ 150-90-60, B, below 1600 each 50; trophies to 1st, top B, below 1600. (1st guaranteed, others based on 40 entries in section). Amateur, 40/100, open to under 1500 or Unr. EF: \$11, if mailed by 2/24; \$13 at site. \$\$ 120-70-50, D, E, Unr. Each 40; trophies to 1st, top D, E, Unr. (1st guaranteed, others based on 40 entries in section) Both: GCA mem req. (\$4), other states ok. More \$\$ per entries. RDS: 10-3-8; 9:30-3. HR: \$22 up to 4 in room.

---

March 17-19, 1978 (FLA)

U.S.S. VALIANT OPEN

\$500.00 Guaranteed! 5-SS 40/2. Multipurpose room at Florida Technological University, Alfaya Trail and FTU Blvd., Orlando. EF: \$15.00 if received by 3/16/78, \$20.00 at door. FCA required (\$5, Jrs. \$3), other states ok. \$\$ (Guaranteed) \$160-115-75, 1st B 50, 1st D/E 50. Trophy to 1st. REG: 6-7P.M. RDS: 7:30, 10-5, 9-3. HR: 13.50-18.50 University Inn, 11731 E. Colonia Dri., Box 14052, Orlando, Fla. 32807. ENT: Mark Solomon, 6 Bayberry Branch, Cassalbarr, Fla. 32707.

---

March 18 - 19, 1978 (GA)

"TRY TO BEAT A KING BENEFIT"

Try out for a board on National Chess League Team. YMCA (Downtown) 145 Luckie Street, Atlanta, Georgia, Phone 525-5401. 5-SS 40/80. Open to all. Free EF to member of the Atlanta Kings who will not be paired against their own team mates. This will be an opportunity for chess players to match up against the strongest players in Georgia. All profits from this tournament will go to support the Atlanta Kings. EF: \$7 at site, \$2 less if received by 3/10/78. \$2 less to players under age 17. Prizes: books for those able to beat or draw a King. It is anticipated that anyone finishing 4-1 will be allowed to play one round as a member of the Kings. GCA required, other state ok. REG: 9-9:15, Room 223 YMCA. RDS 9:30-12:30-3:30; 10:30-1:30. Advance entries: Steve Schneider, 3135 Buford Hwy Apt # 1, Atlanta, Georgia 30329.

---

March 18, 1978 (GA)

THOMASVILLE QUICK SWISS NO. 12

3-SS in 6-man sections, 45/90, Thomas County Federal Building at the corner of Remington & Dawson Streets, Thomasville, Georgia 31792. EF: \$4.50 if received by March 11th; \$5.50 at site. Prizes: Trophies to Top 2 each section. GCA membership required (\$4/yr. \$7/2 yrs.) other states ok. REG: Ends at 9:45 A.M. RDS: 10:00 - 1:30 - 4:30. Enter: International Chess Imports, 3055 General Lee Road, Macon, Georgia 31204. NS.

NONRATED BEGINNERS TOURNAMENT NO.2

4-SS 40/1, EF: \$5, Under 18 \$3. REG: Ends at 10:00 A.M. RDS: 10:15 - 12:30 - 3:00 - 5:15. All other details are as above.



March 19 - 23, 1978

THE 12TH ANNUAL NATIONAL OPEN

(See Ad - Page 2)

April 8-9, 1978 (GA)

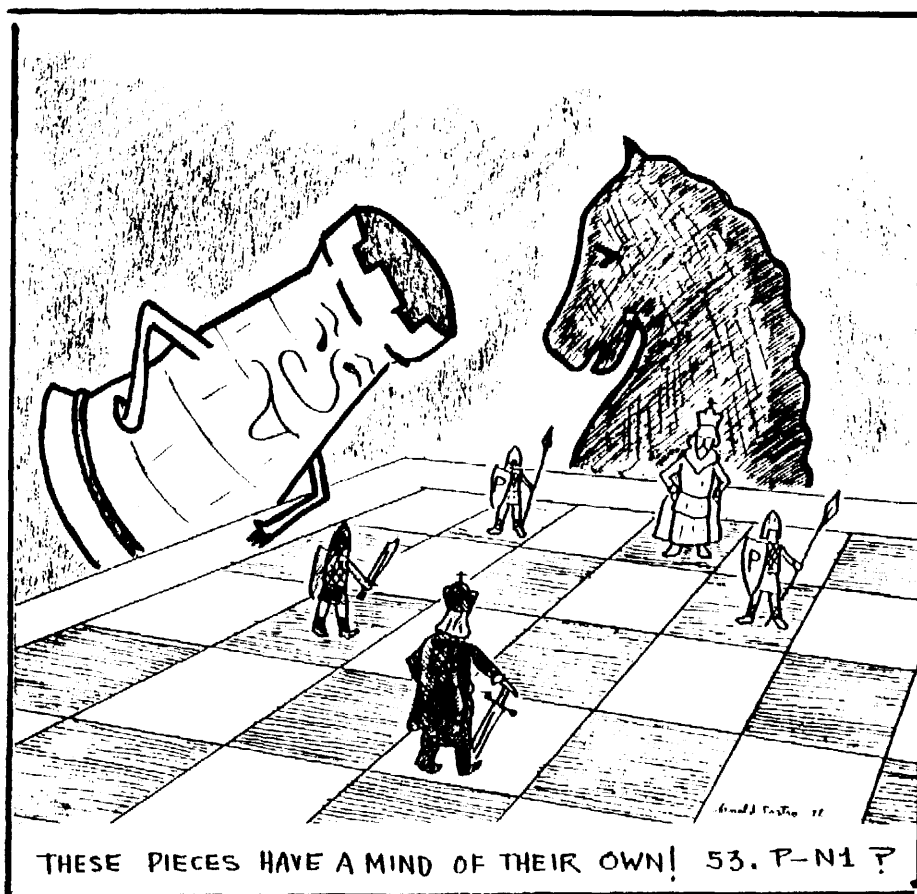
SOUTHEASTERN OPEN

5-SS 40/2 EF: \$15, if received by April 1, \$18 at site. Elbert County Comprehensive High School, 450 Rhodes Drive, Elberton, Georgia. Enter: Greg Maness, 710 Heard St. Elberton, Georgia 30635. N.S. REG: 9-9:45. HR Granite City Motel \$12, \$15. Prizes: Based on 50 players, 250-125-75-50-35. Top A,B,C,D,E, \$35 each. USCF & GCA required other states ok.

April 15-16, 1978 (GA)

GEORGIA - SOUTH CAROLINA OPEN

5-SS 45/2. Embassy Tower Motel, 444 Broad Street, Augusta, Georgia. In 2 Sections. Open to all. EF: \$13, if mailed by 4/5/78, \$15 at site. Prizes: (1st guaranteed, others based on 35 entries in section). \$150 - 100 - 75 A 50, B 50. Trophies to 1st, top A, B. Reserve: (Open to all under 1600 or unrated) EF: \$10 if mailed by 4/5/78, \$12.00 at site. Prizes: (1st guaranteed, other based on 45 entrants in section): \$125 - 80 - 50, D 40, E 40, Unr. 40. Trophies to 1st, D, E, Unr. Both: GCA or SCCA membership required. REG: 8:30-9:30 A.M. 4/15. RDS: 10-3-8; 9-2:30. Enter: Georgia Chess Association, 2672 Moss Lane, Marietta, Georgia 30067.



CROSSTABLE OF THE 1977 S.C. STATE CHAMPIONSHIP FROM CAMDEN, S.C.

<u>NAME</u>	<u>RATING</u>	<u>RD. 1</u>	<u>RD. 2</u>	<u>RD. 3</u>	<u>RD. 4</u>	<u>RD. 5</u>	<u>TOTAL</u>
1. Klaus Pohl	2094	W8	L4	W5	W9	W2	4-1
2. Marvin Chappell	1843	W9	W3	L4	W8	L1	3-2
3. William McClain	1819	W10	L2	W12	L4	D9	2½-2½
4. Paul Tinkler	1691	W11	W1	W2	W3	W6	5-0
5. Jimmy Hill	1660	D12	W7	L1	Withdrew		1½-3½
6. Claude Corbett	1640	D13	L12	D10	W11	L4	2-3
7. Robert Webb	1631	W14	L5	L9	W12	W8	3-2
8. Otto Estenger, Jr.	1619	L1	W13	W11	W12	L7	2-3
9. Harry Abrams	1611	L2	W14	W7	L1	D3	2½-2½
10. Charles H. Walter	1545	L3	L11	D6	L14	Bye	1½-3½
11. Doug Taffinder	1536	L4	W10	L8	L6	W14	2-3
12. Jim Williams	1520	D5	W6	L3	L7	L13	1½-3½
13. Lindsay Blanks	1478	D6	L8	D14	WF	W12	3-2
14. Tom Thorpe	1293	L7	L9	D13	W10	L11	1½-3½

RESERVE SECTION

15. Philip Jackson	1572	D19	W18	W17	L20	L22	2½-2½
16. Lyle Zarbeck	1535	W20	L17	D18	L22	W21	2½-2½
17. Jack Berry	1499	W21	W16	L15	D19	D20	3-2
18. James Hughey	1483	W22	L15	D16	L21	D19	2-3
19. Mario Mahaffey	1414	D15	D20	W22	D17	D18	3-2
20. James West	1405	L16	D19	W21	W15	D17	3-2
21. Leroy Lewis	1366	L17	D22	L20	W18	L16	1½-3½
22. John Brown	1159	L18	D21	L19	W15	W15	2½-2½

NOVICE SECTION

23. Gregory Martin	1397	W32	W30	L26	W37	L24	3-2
24. Richard Van Hall	1374	W33	W36	W25	W26	W23	5-0
25. Kenneth Simpson	1367	W34	W38	L24	D28	W26	3½-1½
26. Robert Smith	1316	W35	W40	W23	L24	L25	3-2
27. Jeremy O'conner	1142	L36	L32	L40	W34	D29	1½-3½
28. Richmond Evans	Unr.	D37	W31	W30	D25	L40	3-2
29. Paul Wester	Unr.	L38	L35	D34	W31	D27	2-3
30. Alton Quattlebaum	Unr.	W39	L23	L28	L33	L38	1-4
31. Brian Hammett	Unr.	L40	L28	L39	L29	L34	0-5
32. David Erb	Unr.	L23	W27	L37	W38	W39	3-2
33. Jim Yelverstein	Unr.	L24	W39	L36	W30	D37	2½-2½
34. George Kemmerlin	Unr.	L25	L37	D29	L27	W31	1½-3½
35. Randy Moore	Unr.	L26	W29	W38	L39	L36	2-3
36. Thomas Salmela	Unr.	W27	L24	W33	L40	W35	3-2
37. William Bland	Unr.	D28	W34	W32	L23	D33	3-2
38. Dare L. Burnham	Unr.	W29	L25	L35	L32	W30	2-3
39. Irving Hwang	Unr.	W31	L26	W27	W36	W28	4-1
40. Michael Houk	Unr.	L30	L33	W31	W35	L32	2-3

SEPTEMBER 17-18, 1977  
1977 I.C.T. FALL CONGRESS

OCTOBER 2, 1977

NAME	RTG.	RD. 1	RD. 2	RD. 3	RD. 4	RD. 5	TOTAL	H-M	SKF
1. Murthy, P.L.N.	1983	W 23	D 10	W 14	W 13	W 4	4½	9	16
2. Sides, Ben	1909	W 30	D 25	D 3	W 9	W 7	4½	9	15
3. Sherman, S.R.	1768	W 43	W 26	D 2	W 11	W 12	4½	8	
4. Kolivick, Randy	2018	W 20	W 33	W 8	W 5	L 1	4	10½	
5. Schultz, Don	1937	W 45	W 24	W 6	L 4	W 16	4	9½	
6. Algeo, Tom	1863	W 41	W 21	L 5	W 20	D 8	3½	9½	
7. Radin, Jared	1937	W 35	D 13	W 27	W 10	L 2	3½	8	14½
8. Robinson, H.J.	1878	W 17	W 19	L 4	W 27	D 6	3½	8	12½
9. Booth, Julian	1340	W 22	W 16	D 12	L 2	D 14	3	10½	
10. Mullis, Don	1661	W 36	D 1	W 15	L 7	D 11	3	9½	
11. Stevens, Jr. W.T.	1534	D 15	W 34	W 22	L 3	D 10	3	9	
12. Reppert, Victor	1976	W 31	D 14	D 9	W 33	L 3	3	8½	15
13. Coles, Mark	1600	W 47	D 7	W 32	L 1	D 15	3	8½	13
14. Hawkins, Ralph	1643	W 37	D 12	L 1	W 36	D 9	3	8	14
15. Cork, III, Charles	1943	D 11	W 39	L 10	W 28	D 13	3	8	13½
16. Pressley, James	1720	W 38	L 9	W 35	W 21	L 5	3	8	13½
17. Waters, Thomas	1372	L 8	W 46	D 18	D 34	W 27	3	7½	13
18. Joiner, Bob	1807	L 26	W 43	D 17	W 25	D 19	3	7½	11
19. Jackson, Jim R.	1593	W 46	L 8	D 36	W 37	D 18	3	7	12
20. Bert, Alison	1557	L 4	W 42	W 44	L 6	W 28	3	7	12
21. Smith, Jr. John	1579	W 40	L 6	W 29	L 16	W 26	3	7	12
22. Lorentzson, D.	1787	L 9	W 38	L 11	W 41	W 31	3	6½	
23. Hathcock, B.	1546	L 1	L 36	W 38	W 43	W 29	3	6½	
24. Cox, Nicholas	1615	W 44	L 5	L 28	W 39	W 30	3	5	
25. Lawson, Jimmy	1581	W 29	L 2	D 37	L 18	W 40	2½		
26. Mingle, James	1365	W 18	L 3	L 33	W 32	L 21	2	8½	15
27. Spinks, David E.	1581	W 48	W 32	L 7	L 8	L 17	2	8½	13½
28. Campfield, Sr. A.	1347	L 32	W 48	W 24	L 15	L 20	2	8	12½
29. Scott, Joseph	UNR	L 25	W 30	L 21	W 35	L 23	2	7½	
30. Davis, Jerry P.	1378	L 2	L 29	W 47	WF	L 24	2	7	
31. Taffinder, Jr. D.	1536	L 12	L 37	W 42	W 44	L 22	2	6½	
32. Ruehmann, A.C.	1796	W 28	L 27	L 13	L 26	W 37	2	6	10½
33. Reese, Truman	1677	W 42	L 4	W 26	L 12	----	2	6	10
34. Todd, Alan	1799	D 39	L 11	W 40	D 17	----	2	6	9
35. Athey, Mike	1533	L 7	W 47	L 16	L 29	W 43	2	5½	
36. Bassett, Robert	1287	L 10	W 23	D 19	L 14	----	1½	9	
37. Burns, James E.	1287/181	L 31	D 25	L 19	L 32	L 1½	1½	7½	12½
38. Miklis, David	1318	L 16	L 22	L 23	W 47	D 41	1½	7½	10½
39. Jameson, Jr. J.	1364	D 34	L 15	D 41	L 24	D 42	1½	7	
40. Homack, Bob	New	L 21	D 41	L 34	W 45	L 25	1½	6½	
41. Noyes, William	1368	L 6	D 40	D 39	L 22	D 38	1½	6	11
42. Burdette, Jeff	1299/10	L 33	L 20	L 31	WF	D 39	1½	6	9-3/4
43. Debejar, R.	1324/18	L 3	L 18	WF	L 23	L 35	1	8	
44. Ammons, Bobby	1254	L 24	W 45	L 20	L 31	----	1	6	
45. Mitchell, Bill	1389	L 5	L 44	L 46	L 40	W 47	1	5	3-3/4
46. Blossomgame, J.	UNR	L 19	L 17	W 45	LF	----	1	4-3/4	
47. Castro, Arnold	1139	L 13	L 35	L 30	L 38	L 45	0	5	
48. Turner, Garry	New	L 27	L 28	LF	LF	----	0	3½	

3RD ATLANTA QUADRANGULAR

"SECTION A"					
<u>NAME</u>	<u>RTG.</u>	<u>RD. 1</u>	<u>RD. 2</u>	<u>RD. 3</u>	<u>TOTAL</u>
1. Abbott, Ted	1741	W 3	D 2	L 4	1½
2. Joiner, Bob	1807	W 4	D 1	L 3	1½
3. Algeo, Tom	1863	L 1	D 4	W 2	1½
4. Cranberg, Lee D.	1857	L 2	D 3	W 1	1½
"SECTION B"					
1. Hamilton, O. AL.	1692	W 2	D 3	D 4	2
2. Hawkins, Ralph	1643	L 1	W 4	W 3	2
3. King, Douglas	1694	W 4	D 1	L 2	1½
4. Coles, Mark	1600	L 3	L 2	D 1	½
"SECTION C"					
1. King, Sr. G. B.	1505	W 2	D 4	W 3	2
2. Noyes, William	1368	L 1	W 3	Bye	2
3. Scott, Joseph	1383	W 4	L 2	L 1	1½
4. Spinks, David	1581	L 3	D 1	----	½
"SECTION D"					
1. Debejar, Roderick	1324	W 4	W 3	W 2	3
2. Banks, Marvin D.	1286	W 3	W 4	L 1	2
3. Doyle, John H.	1347	L 2	L 1	Bye	1
4. Burdette, Jeff	1299	L 1	L 2	----	0
"SECTION E"					
1. Saahir, Johnny	New	W 2	W 3	W 4	3
2. Ballard, Mike	1207	L 1	W 4	W 3	2
3. Schneider, Jay	1294	W 4	L 1	L 2	1
4. Berry, John T.	1205	L 3	L 2	L 1	0
"SECTION F"					
1. Feldman, Warren	New	W 4	D 2	D 3	2
2. Zimmer, Robbie	1097	W 3	D 1	L 4	1½
3. Barnes, Monica	New	L 2	W 4	D 1	1½
4. Hasty, Jeffrey H.	1046	L 1	L 3	W 2	1

HIGH SCHOOL CHAMPIONSHIP													
1.	Roberts, Stewart	1635	W	3	W	4	W	2	D	5	W	7	4½
2.	Vermilya, James	1623	W	8	W	6	L	1	W	4	W	5	4
3.	Gernazian, G.	1290/19	L	1	L	7	W	8	W	6	W	4	3
4.	Yancey, Paul	1295	W	7	L	1	W	6	L	2	L	3	2
5.	Schneider, Jay	1294	L	6	W	8	D	7	D	1	L	2	2
6.	Serra, Glen S.	New	W	5	L	2	L	4	L	3	D	8	1½
7.	Dressel, III F.	1035	L	4	W	3	D	5	L	8	L	1	1½
8.	Zindler, Dean	1066	L	2	L	5	L	3	W	7	D	6	1½

SEPTEMBER 24, 1977

THOMASVILLE QUAD NO. 6

SECTION "A"							
NAME	RTG.	RD. 1	RD. 2	RD. 3	TOTAL	H-M	
1. Ryan, Jay T.	1757	W 2	D 3	W 5	2½		
2. Edwards, Larry G.	1471	L 1	W 6	W 3	2		
3. Fuchs, Richard	1494	W 4	D 1	L 2	1½	2	
4. Powers, John J.	1461	L 3	D 5	W 6	1½	1	
5. Chancy, John C.	1454	D 6	D 4	L 1	1		
6. Clayton, James	1490	D 5	L 2	L 4	½		

SECTION "B"							
1.	Copeland, J.B.	1402	W 2	W 4	L 3	2	2
2.	Cline, Hugh E.	1266	L 1	W 6	W 4	2	1½
3.	Murkerson, John D.	1150	L 4	W 5	W 1	2	1
4.	Fowler, John B.	1278	W 3	L 1	L 2	1	2
5.	Howard, Preston	1282	L 6	L 3	Bye	1	1½
6.	Cullifer, Steven	1256	W 5	L 2	---	1	½

SECTION "C"							
1.	Gaither, James C.	New	W 5	W 6	W 2	3	
2.	Powers, Chris R.	991/13	W 3	W 4	L 1	2	2
3.	Litton, Eddie W.	Unr.	L 2	W 7	W 5	2	1
4.	Pistelli, Danilo	Unr.	W 7	L 2	W 6	2	1
5.	Bowers, David D.	1071	L 1	W 8	L 3	1	2
6.	Baker, John H.	922/6	W 8	L 1	L 4	1	2
7.	Bogusch, Robert	Unr.	L 4	L 3	D 8	½	2
8.	Mahan, Robert B.	Unr.	L 6	L 5	D 7	½	1

THOMASVILLE QUAD NO. 7

SECTION "A"							
1.	Leahy, Kerry J.	1574	W 8	W 3	W 2	3	
2.	Tanner, David A.	1626	W 4	W 5	L 1	2	
3.	Cline, Hugh E.	1274	W 6	L 1	D 4	1½	1½
4.	Chancy, John C.	1449	L 2	W 7	D 3	1½	1½
5.	Cullifer, Steven	1375	W 7	L 2	D 6	1½	1½
6.	Powers, John J.	1451	L 3	W 8	D 5	1½	1½
7.	Edwards, Larry G.	1543	L 5	L 4	W 8	1	
8.	Clayton, James W.	1431	L 1	L 6	L 7	0	

SECTION "B"										
1.	Burns, Aubrey M.	Unr.	W	3	D	4	W	7	2½	1½
2.	Pistelli, Danilo	901/6	D	5	W	6	W	4	2½	1½
3.	Murkerson, John	1225	L	1	W	5	W	6	2	
4.	Powers, Chris R.	984/16	W	8	D	1	L	2	1½	2½
5.	Litton, Eddie	Unr.	D	2	L	3	W	8	1½	2
6.	Baker, Charles	New	W	7	L	2	L	3	1	2
7.	Baker, John H.	747/9	L	6	W	8	L	1	1	1
8.	Lester, David J.	Unr.	L	4	L	7	L	5	0	

OCTOBER 8-9, 1977

CHESS DAY CHAMPIONSHIPS

NAME	RTG.	RD. 1	RD. 2	RD. 3	RD. 4	RD. 5	TOTAL	H-M	SKF
1. Murthy, P.L.N.	1928	W 8	W 4	D 2	D 3	W 5	4		
2. Sherman, Stan	1874	Bye	W 6	D 1	W 4	D 3	3½		
3. Algeo, Tom	1890	W 5	L 7	W 8	D 1	D 2	3		
4. Schultz, Donald	1924	W 9	L 1	W 7	L 2	D 6	2½	8	
5. Hamilton, Al	1692	L 3	Bye	D 6	W 7	L 1	2½	7½	
6. King, Douglas	1687	D 7	L 2	D 5	WF	D 4	2½	7	
7. Cranberg, Lee	1857	D 6	W 3	L 4	L 5	W 8	2½	6½	
8. Joiner, Bob	1807	L 1	W 9	L 3	Bye	L 7	2		
9. Abbot, Ted	1741	L 4	L 8	Bye	LF	----	1		
CLASS "B"									
1. Andrews, George	1714	W 10	D 6	D 7	W 5	D 3	3½	7½	
2. Vermilya, Jim	1641	L 7	W 8	D 4	W 9	W 6	3½	6½	
3. Mullis, Don	1636	L 5	W 10	W 9	W 7	D 1	3½	6	
4. Morrison, Jeff	1675	D 6	D 9	D 2	W 10	W 7	3½	5½	
5. Todd, Alan	1746	W 3	D 7	D 6	L 1	W 8	3		
6. Morrison, J.E.	1786	D 4	D 1	D 5	W 8	L 2	2½		
7. Pressley, J.P.	1775	W 2	D 5	D 1	L 3	L 4	2	10½	
8. Hawkins, Ralph	1623	W 9	L 2	W 10	L 6	L 5	2	6½	
9. Smith, Jr. J.W.	1694	L 8	D 4	L 3	L 2	Bye	1½		
10. Coles, Mark	1625	L 1	L 3	L 8	L 4	----	0		
CLASS "C"									
1. Roberdeau, J.C.	1574	D 9	W 4	W 3	W 2	W 5	4½		
2. Bert, Alison	1595	W 7	W 8	W 6	L 1	W 4	4		
3. Hathcock, B.D.	1546	W 5	L 6	L 1	WF	Bye	3		
4. Chancy, J.C.	1449	D 6	L 1	W 9	W 5	L 2	2½		
5. Saahir, Johnny	Unr.	L 3	W 10	W 7	L 4	L 1	2		
6. Blaydes, Frank	1584	D 4	W 3	L 2	----	----	1½		
7. Cox, Nicholas	1512	L 2	W 9	L 5	----	----	1	3½	
8. Stevens, Jr. W.T.	1570	W 10	L 2	----	----	----	1	1½	
9. Waters, Thomas	1426	D 1	L 7	L 4	----	----	½		
10. Brown, Glenn	1442/14	L 8	L 5	F	LF	----	0		
CLASS "D"									
1. Jones, Walter	1305	W 15	W 7	W 4	D 2	W 7	4½		
2. Jamieson, J.	1364	D 17	W 8	W 10	D 1	W 4	4	7	12
3. Serra, Glen	Unr.	Bye	D 5	D 9	W 6	W 11	4	7	10
4. Gernazian, G.H.	1302	W 12	W 13	L 1	W 5	L 2	3	9	
5. Penn, Robert	1329/20	D 9	D 3	D 7	L 4	L 1	3	8	
6. Scott, Joseph	1383/8	W 14	L 1	W 12	L 3	W 9	3	7½	13½
7. Veale, Frank H.	1245	D 11	W 16	D 5	W 8	L 1	3	7½	13½
8. Murkerson, John	1228	D 16	L 2	W 15	L 7	W 13	2½		
9. Chapman, Robert	New	L 5	W 15	D 3	D 10	L 6	2	8	
10. Cline, Jr. H.E.	1274	D 13	W 11	L 2	D 9	L 5	2	7	12½
11. Noyes, William	1368	D 7	L 10	D 13	W 12	L 3	2	7	12
12. Garner, John R.	New	L 4	W 14	L 6	L 11	W 15	2	6½	
13. Brand, Robert	1397	D 10	L 4	D 11	D 14	L 8	1½	6½	
14. Weathers, Jr. J.	1251	L 6	L 12	Bye	D 13	----	1½	3½	
15. Feldman, Warren	Unr.	L 1	L 9	L 8	WF	L 12	1		
16. Debejar, Roderick	1339	D 8	L 7	F	OF	----	½		
17. Schnelder, Jay	1231	D 2	----	----	----	----	½		
CLASS "E"									
1. Green, David	1096	W 2	W 11	W 4	L 3	W 5	4	9	
2. Holt, Robert	1186	L 1	W 6	W 8	W 0	1F	4	8	14
3. Thomas, Jr. W.	New	W 6	W 7	W 10	W 1	OF	4	8	13
4. Haisten, Kevin	1164	W 10	W 8	L 1	D 5	D 6	3		
5. Zinner, Dean	1019	D 7	9	W 16	D 4	L 1	1	2½	7½
6. Gilleland, Robert	1073	L 3	L 2	12	1F	D 4	2½	7	
7. Castro, Arnold	1168	D 5	L 3	L 9	W 12	W 10	2		
8. Buckner, Edward	1067	W 12	L 4	L 2	W 10	----	2½		
9. Godfrey, Manual	1160	L 11	D 5	W 7	L 2	----	1½		
10. Bergamo, Ralph	New	L 4	W 12	L 3	L 8	L 7	1	8	
11. Cummins, Yim	Unr.	W 9	L 1	L 5	OF	----	1	6½	
12. Turner, Garre	Unr.	L 8	L 10	L 6	L 7	Bye	1	5½	

## ATLANTA OPEN (November 25-26-27, 1977)

## Open Section Crosstable

Name	Rating	Rd1	Rd2	Rd3	Rd4	Rd5	Rd6	Tot.	Med.	Solk.	Cum.
1. Ruben Shochron	2162	W41	D9	W10	W8	W6	W7	5			
2. Greg Samra	2069	D23	W20	D38	W21	W19	W6	5			
3. Klaus A. Pohl	2094	W31	W21	W19	L6	D4	W11	4	14		
4. Stuart Rundlett	1965	W46	W22	D14	D7	D3	W15	4	13		
5. Robert Jurjevich	2006	D36	W49	L8	W34	W18	W14	4	11		
6. Leroy S. Taylor	2046	W49	W36	W12	W3	L1	L2	4	16		
7. John Dunning	2264	W35	D38	W9	D4	W14	L1	4	15	22	16
8. George Holton	1868	W37	D16	W5	L1	D9	W19	4	15	22	14
9. Justin Morrison	1918	W33	D1	L7	W36	D8	W22	4	13		
10. Jared Radin	1908	D34	W23	L1	W31	D13	W20	4	13	20	
1. Bill Kilpatrick	2043	L20	W25	W27	W38	W12	L3	4	13	20	
2. P. L. N. Murthy	1928	W15	W40	L6	W37	L11	W21	4	12		
3. Mark E. Coles	1625	D27	D48	D35	W29	D10	W28	4	10		
4. Donald Schultz	1924	W39	W18	D4	W16	L7	L5	3	15		
5. Roy T. Farr	1695	L12	W7	W28	W17	D16	L4	3	13		
6. Friedrich G. Bittner	2078	W32	D8	W29	L14	D15	D17	3	12		
7. Tom Algeo	1890	D45	D34	W20	L15	W24	D16	3	11		
8. Mark Solomon	1774	W44	L14	D34	W30	L5	W29	3	10		
9. Milton Wright	1939	W47	W28	L3	W22	L2	L8	3	14	21	
10. Eric M. Buel	1712	W11	L2	L17	W45	W27	L10	3	14	21	
1. Steve Hunt	1849	W45	L3	W39	L2	W40	L12	3	13		
2. James P. Pressley	1775	W30	L4	W33	L19	W37	L9	3	12		
3. Charles Jurjevich	1718	D2	L10	D30	D39	D26	W37	3	11		
4. John Richard Simmons	1613	L28	W47	D31	W35	L17	D27	3	10		
5. Otto Estenger Jr.	1619	D48	L11	W43	D27	L29	W35	3	10	15	
6. Jim W. Vermilya	1641	L38	L35	W32	D28	D23	W34	3	10	15	
7. Albert C. Rushmann	1796	D17	W42	L11	D25	L20	D24	2	13		
8. David A. Raymond	1778	W24	L19	L15	D26	W39	L13	2	12		
9. Bob Joiner	1807	W46	W43	L16	L13	W25	L18	2	11		
10. Kenneth Albin	1271	L22	W45	D23	L18	D32	D32	2	11		
11. Jim Corbett	1753	L3	W45	D24	L10	W43	-	2	10		
12. Alan Todd	1746	L16	L37	L26	W50	D30	W43	2	9		
13. Joe Pharo	1682	L9	W41	L22	L40	D44	W43	2	9		
14. David Lee	1673	D10	D17	D18	L5	D35	L26	2	14		
15. Keith Bisiada	1760	L7	W26	D13	L24	D34	L25	2	13		
16. Brad E. Jensen	1711	D5	L6	W42	L9	D30	-	2	12		
17. Don Mullin	1636	L8	W32	W40	L12	L22	L23	2	11	17	
18. Stan Sherman	1874	W26	D7	D2	L11	-	-	2	11	16	
19. O. Al Hamilton	1692	L14	W44	L21	D23	L28	D41	2	10		
20. Jerry T. Wheeler	1771	W50	L12	L37	W33	L21	-	2	9		
1. David Lorentson	1757	L1	L33	L47	D42	L32	D39	2	9		
2. Ralph Hawkins	1623	W47	L27	L36	D41	W32	W44	2	7		
3. Terry Dean Likens	1648	D17	L29	L25	W44	L31	L33	1	11		
4. Dan D. A. Bradley	1232	L18	L39	W3	L43	D33	L42	1	8		
5. Ulysses Martin	1635	L21	L31	W46	L20	-	-	1	7		
6. Curtis Gillespie	1703	L4	L30	L45	Bye	-	-	1	7		
7. Charles D. Starling	1698	L19	L24	W41	-	-	-	1	4	9	
8. Robert T. Hicks	1785	D25	D13	-	-	-	-	1	7		
9. George E. R. Andrews	1714	L6	L5	LP	-	-	-	1	4		
10. Ralph E. Blakeman	?	L40	LP	-	L32	LP	-	0	2		

Memery Section Crosstable  
(Atlanta Open - November 25-26-27)

Name	Rating	Rd1	Rd2	Rd3	Rd4	Rd5	Rd6	Tot.	Med.	Solk.	Cum.
1. Kerry J. Leahy	1574	W58	W15	W19	W4	D6	D11	5	16		
2. Joe Roberdeau	1574	W45	W28	W10	L6	W20	W15	5	15		
3. Marvin D. Banks	1286	W22	W21	L6	W19	W36	W12	5	14		
4. Rick D. Likens	1557	W31	W50	W14	L1	W28	W13	5	14	21	
5. Lyle Hanson	1587	W59	W41	D36	W23	D12	W6	5	14	20	
6. Eric Solomon	1560	W33	W30	W3	W2	D1	L5	4	18		
7. Lindsey E. Blanks	1478	W25	W17	W16	D12	L11	W21	4	15		
8. Timothy W. Spencer	1596	W18	L14	W31	W50	D9	W23	4	14		
9. Veri L. Martin	1503	W26	W38	L12	W43	D8	W18	4	13		
10. Michael Regan	1523	W66	W13	L2	D29	W47	W25	4	13		
11. Robert Feldstein	1596	L30	W60	W59	W35	W7	D1	4	12		
12. Jim R. Jackson	1570	W67	W69	W9	D7	D5	L3	4	17		
13. Johnny H. Saahir	Unr.	W40	L10	W37	W14	W22	L4	4	15	22	
14. Michael Tannenbaum	1437	W24	W8	L4	L13	W39	W39	4	15	23	
15. Joseph Scott	1383	W48	L1	W49	W38	W17	L2	4	14		
16. Phillip F. Jackson	1572	W65	W32	L7	L18	W33	W37	4	12		
17. Allison Bert	1595	W52	L7	W65	L32	L15	W28	4	12		
18. Michael Darzi	1308	L8	W26	W51	W16	D21	L9	3	15		
19. Nicholas Cox	1512	W43	W39	L1	L3	D31	W45	3	13		
20. Ronald Bleier	1469	D46	W61	W63	D36	L2	D24	3	12	19	14
21. Bernard Hathcock	1546	W29	L3	W55	W53	D18	L7	3	12	19	14
22. Keith Bluestone	1577	L3	W64	D37	W45	L13	W34	3	12	18	
23. Glenn H. Brown	1478	W46	W48	L5	W29	L8	W12	3	12	17	
24. Wayne League	Unr.	L14	L68	W54	W52	W35	D20	3	11		
25. James T. Harris	Unr.	L7	W52	D57	W44	L10	W3	3	10	16	12
26. Walton Dooey	Unr.	L9	L18	D40	W61	W57	W47	3	10	16	8
27. Julian Booth	1431	L49	L29	D62	W48	W38	W43	3	9		
28. Ken Zubrzycki	1409	W70	L2	W66	W34	L4	W17	3	14		
29. John R. Gillooly	1178	L21	W27	W41	D10	L23	D30	3	13	21	
30. Billy Blocker Jr.	1317	W11	L6	L34	W54	D48	D29	3	13	19	
31. John R. Berry	1205	L4	W54	L8	W51	D19	D41	3	13	19	
32. Herbert R. Scott	1340	W42	L16	W48	L17	L34	W51	3	13	19	11
33. Gregory E. Maness	1219	L6	W42	D22	D44	L16	W54	3	13	19	9
34. Glen S. Serra	Unr.	D36	D37	W30	L28	W32	L22	3	12		
35. James Mingle	1265	D34	D51	L11	L24	W53	W3	3	11	17	
36. Raymond Gates	Unr.	W64	W49	D5	D20	L3	-	3	11	16	
37. Thomas Palavada	1335	D51	D34	L13	W66	W33	L16	3	11		
38. Douglas Vandecar	Unr.	W55	L9	W4	L15	L27	W57	3	10	16	
39. Mike W. McNab	Unr.	W57	L19	L35	W65	W50	L14	3	10	16	
40. William C. Noyes	1368	L13	L66	D26	D56	W64	W49	3	10		
41. Brian McCarthy	1465	W62	L5	L29	W64	D43	D31	3	9		
42. Glen E. Smith	Unr.	L32	L33	L64	W67	W55	W56	3	8		
43. Aubrey M. Burns	Unr.	L19	W57	W4	L9	D41	L27	2	11	17	
44. Kenneth W. Seagle	1592	D71	W47	L23	D33	L25	D59	2	11	17	
45. Jay L. Schneider	1231	L2	W46	L22	W60	L19	W2	2	11	16	8
46. Michael C. Houk	Unr.	D20	L23	L45	L27	W61	W58	2	11	16	6
47. Nathaniel Henry	1278	W44	W56	W60	L10	L26	W2	2	10		
48. Thomas Pettigrew	Unr.	L15	W58	L32	W55	D30	-	2	9		
49. David A. McCaigue	Unr.	W27	L36	L15	W59	L14	L40	2	14		
50. Joseph Jamieson Jr	1364	W54	L4	W68	L8	L39	-	2	12	17	10
51. Garry Turner	Unr.	D37	D35	L18	L31	W65	L32	2	12	17	7
52. Paul Yancey	1307	L17	L25	W70	L24	L56	W60	2	11		
53. Jonathan Pettigrew	Unr.	L69	W67	W4	L21	L37	L35	2	10		
54. George J. Siffri	Unr.	L50	L31	W67	L30	W4	L33	2	9	13	
55. Steve Guitay	1135	L38	Bye	L21	L48	L42	W67	2	9	13	
56. Dean Zindler	1019	-	W47	L47	W52	L42	W2	2	7		
57. James E. West	1405	L39	L43	D25	W62	L26	L38	1	11		
58. Jerry G. Taylor	1285	L1	L48	L24	D76	W62	L46	1	10	16	
59. Lowell L. Kirkland	1294	L5	W62	L11	L49	LP	D44	1	10	15	
60. Yusuf A. Ziyad	Unr.	W46	L11	W61	L47	L45	L52	1	8	13	
61. Arnold Castro	1168	W46	L20	L60	L26	L48	W64	1	8	12	
62. James Koutlas	Unr.	L41	L59	D27	L57	L58	Bye	1	8		
63. Douglas K. Wedel	1551	W46	L21	L20	LP	-	-	1	7		
64. Ralph Bergamo	Unr.	L36	L22	W42	L41	L40	L61	1	12		
65. Ronald Kirk	1229	L16	W70	L17	L39	L51	-	1	10		
66. Jimmie Blossomgane	Unr.	L10	W40	L28	L37	-	-	1	9		
67. Lawrence Yancey	1222	L12	L53	L54	L42	W70	L55	1	7		
68. Stephen Schneider	1238	-	L24	L50	-	-	-	1	7		
69. Asnerd Fraser	1400	W53	L12	LP	-	-	-	1	6		
70. Duncan McEwen	Unr.	L28	L45	L52	D58	L67	-	1	6		
71. Walter L. Jones	1305	D44	L63	LP	-	-	-	1	5		

NOTE: The Atlanta Amateur was won by Michael DeLange, John Womack, John Trent, and Ken Jones each with a score of 4½ - 1½. Left at the Atlanta Open: John Dunning's clock, Klaus Pohl's vinyl board, cloth roll-up board, two thermos bottles, a boxed set of plastic chessman including a magnetic board & set, solid wall-board and leather chess board. Mike Decker will bring all these items to the Atlanta Winter Congress (Jan. 7-8) if requested to do so. (Mike Decker, 130 Pierce Drive Apt. 201 Atlanta, 30307)

## NOVEMBER 5-6, 1977

## NORTH GEORGIA OPEN

NAME	RTG.	RD. 1	RD. 2	RD. 3	RD. 4	RD. 5	TOTAL
1. Fred Allsbrook	2001	W 10	W 6	W 3	L 4	W 7	4
2. Mariano Acosta	2095	L 3	W 7	D 6	W 5	W 4	3½
3. Jerry Wheeler	1771	W 2	D 4	L 1	W 8	D 6	3
4. Ruben Shochron	2162	D 9	D 3	W 8	W 1	L 2	3
5. George Andrews	1714	L 6	D 10	W 9	L 2	W 8	2½
6. Tom Algeo	1890	W 5	L 1	D 2	D 7	D 4	2½
7. Truman Reese	1677	D 8	L 2	W 10	D 6	L 1	2
8. Charles Bailey	1617	D 7	W 9	L 4	L 3	L 5	1½
9. Bob Joiner	1807	D 4	L 8	L 5	----	----	½
10. John Molino	1762	L 1	D 5	L 7	----	----	½

## UNDER 1700

NAME	RTG.	RD. 1	RD. 2	RD. 3	RD
------	------	-------	-------	-------	----



# Georgia-South Carolina Open

## AUGUSTA GA.

April 15-16

Embassy Tower Motel

5-SS

45/2

444 Broad St.

## Open Section

Entry Fee \$13 if mailed by 4/5 \$15 at Site Trophies 1st, Top A, Top B  
Prizes \$150,100,75,A 50,B 50 (Based on 35 1st Guaranteed)

## Reserve Section

Entry Fee \$10 if mailed by 4/5 \$12 at Site Trophies 1st, Top D, E, Unrated  
Prizes \$125,80 50, D, E, Unr 40 Each (Based on 45 1st Guaranteed)

### BOTH

GCA or SCCA Required

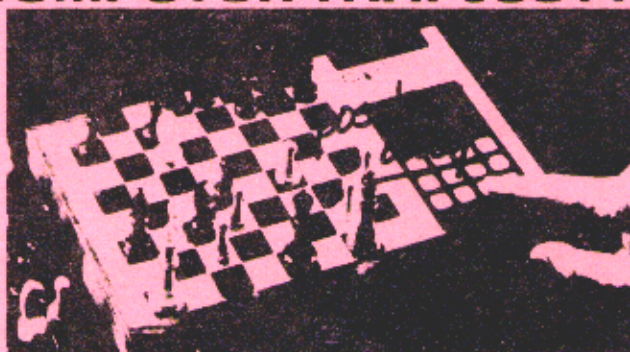
Registration: 8:30-9:30 AM Rounds 10-3-8-9-2-30

Enter G.C.A. 2672 Moss Lane Marietta, Ga. 30067

## THE CHESS CHALLENGER™

### THE MICRO COMPUTER THAT JUST PLAYS CHESS

- Easy to play and great fun for the entire family, youngsters, hobbyists, shut-ins and retirees.
- Makes a wonderful gift for your favorite chess player.
- Teaches chess strategy.
- Chess board and chess pieces included.
- Use algebraic notation.
- Plays white or black pieces.
- Can give position verification at any time.
- AC powered 115 VAC.
- 10 day money back guarantee.



- Select from two challenging computer games.

The original single-level CHESS CHALLENGER™ is great for beginners. It plays only at level 1.  
\$200.00

The upgraded version CHESS CHALLENGER™ lets you select your own playing level. It plays at three levels.  
level 1 --  
class E-1000-1199  
level 2 --  
class D-1200-1399  
level 3 --  
class C-1400-1599  
\$275.00

I have enclosed my check for  
☐ \$200.00 for the single-level CHESS CHALLENGER™  
☐ \$275.00 for the upgraded tri-level version CHESS CHALLENGER™  
☐ Please send me more information on the CHESS CHALLENGER™

Name \_\_\_\_\_  
Street \_\_\_\_\_  
City \_\_\_\_\_ State \_\_\_\_\_ Zip \_\_\_\_\_

Mail to Chess Computer  
P.O. Box 10354  
Atlanta, Georgia 30319

- Club discounts available.
- Full warranty.



# 12th NATIONAL OPEN

CHARLESTON, S.C.

MARCH 19-23

FRANCIS MARION HOTEL

## \$6,250 IN CASH PRIZES

1st, \$1,000      2nd, \$750      3rd, \$500      4th, \$350      5th, \$250  
6th through 10th, \$150 each

1st, \$200      Class Prizes      2nd, \$150      3rd, \$100

In each of the following five classes

EXPERT	CLASS A	CLASS B	CLASS C	CLASSES D&E	7-SS
UNRATED PRIZES	1st, \$150	2nd, \$100	Time Control	50/2	
SENIOR PRIZES	1st, \$100	2nd, \$50			

ROUNDS 3/19 and 3/20 12 noon and 6 PM. ENTRY FEE: \$35 if postmarked  
3/21 and 3/22 2 PM. 3/23 10 AM. 3/5/78 \$10 more at site

ENTER U.S.C.F. (National Open), 186 New Windsor, NY 12550.

QUESTIONS J. Schlich, 1607 Bexley St., N. Charleston, SC 29406  
U.S.C.F. membership must be good thru 3/78.

## Georgia High School Championship

ATLANTA GA.

FEB 4-5

YMCA

5-SS

45/2

145 LUCKIE ST.

G.C.A. REQUIRED \$1.

ENTRY Fees      Championship Section \$ 5.      Rounds: 10:00-3:00-8:00

Novice Section \$ 2.      9:00-2:00

## TROPHIES-13

Registration: 8:30-9:30 AM

No Smoking

G.C.A. Newsletter  
P.O. Box 76242  
Sandy Springs, GA 30328

RETURN IF UNDELIVERABLE  
RETURN POSTAGE GUARANTEED

BULK RATE  
U.S. POSTAGE  
PAID  
PERMIT NO. 178

29801      EXP      00/00  
LEE HYDER  
33 LONGWOOD  
AIKEN, SC 29801