

THE CHESSMAN

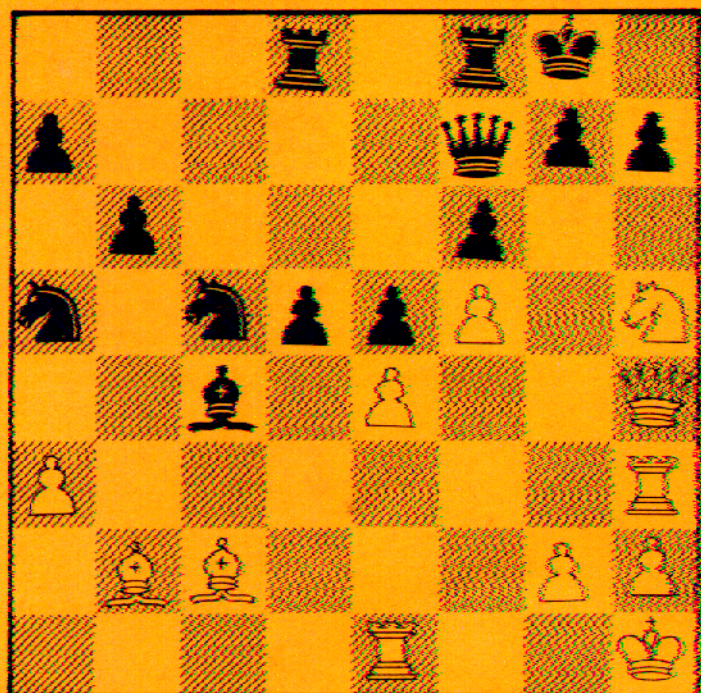
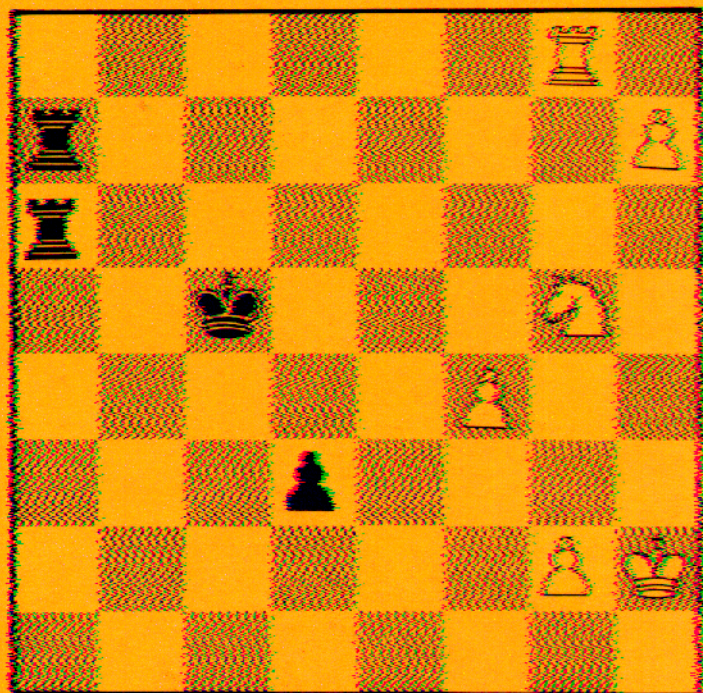
PRICE 75¢

THE OFFICIAL PUBLICATION OF THE

MAR-APR 1978

FLORIDA

SOUTH CAROLINA & GEORGIA CHESS ASSOCIATIONS



SPASSKY VS KORCHNOI
FLORIDA

THE CHESSMAN

Editor-in-Chief

Bill Noyes

Editors

J. E. Morrison

Stan Vaughan

Larry Starnb.

GAMES

Robert Byrne	3	Korchnoi - Spassky
Mariano Acosta	10	North Dakota Open
J. E. Morrison	12	Georgia Correspondence Championship
Mike Decker	13	Atlanta Kings
Tom Bagby	15	Golden Knights Championship
Mike Blecker	17	New York Commercial Chess League
Ron Henley	19	Grumfeld
Stan Vaughan	20	Dixie Open

ORGANIZATIONAL NEWS

Egon Teodorson	21	Editorial
J. E. Morrison	23	Welcome
Mark Solomon	23	Letter to the Editor
Charles E. Braun	23	SCCA Elections Results
Bill Dodgen	24	Notes From the President's Desk
J. E. Morrison	24	Understanding the Chessman

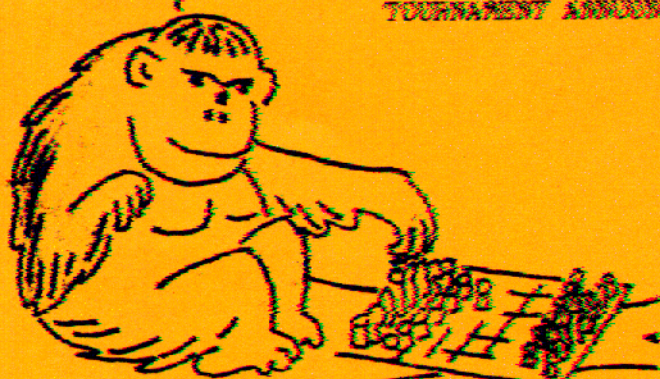
ARTICLES

Bill Noyes	26	Georgia High School Champion
Steve Schneider	27	Chess Camp
John McCrary	28	Postal Chess: One Point of View

WHERE TO PLAY CHESS - 29

TOURNAMENT RESULTS - 30

TOURNAMENT ANNOUNCEMENTS - 31

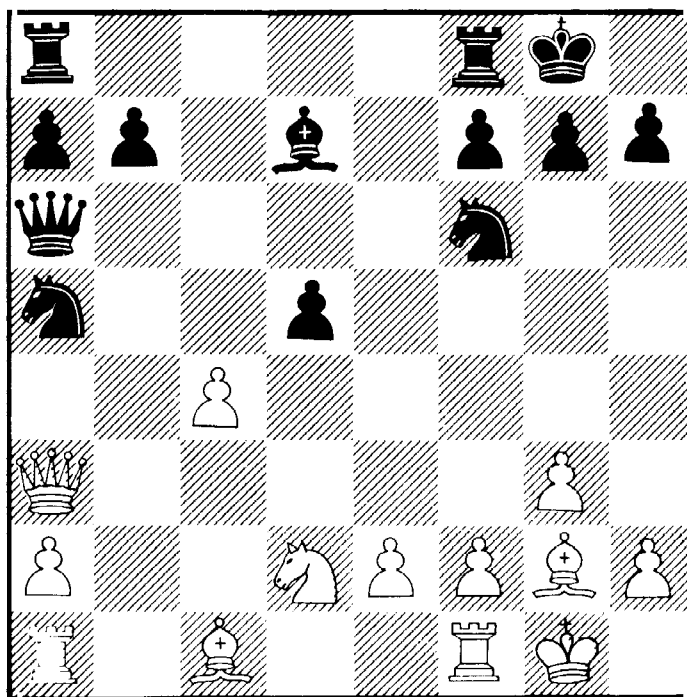


COVER: UPPER RIGHT GCA HISTORIAN
DR. ROBERT F. BRAND
UPPER LEFT GCA HISTORIAN
DR. ROBERT F. BRAND
LOWER RIGHT GCA PRESIDENT
J. EARLE MORRISON

I'am back see page 18

White Korchnoi	Black Spassky
English - Game 1	
1. P-QB4	P-QB4
2. N-KB3	N-KB3
3. N-B3	N-B3
4. P-Q4	PxP
5. NxP	P-K3
6. P-KN3	B-B4
7. N-N3	B-N5
8. B-N2	P-Q4
9. PxP	NxP
10. P-QR3	BxNch
11. PxB	O-O
12. Q-B2	Q-B2
13. P-QB4	N-K4
14. N-Q2	P-QN4
15. P-B5	B-N2
16. O-O	QR-B1
17. N-N3	P-QR4
18. P-K4	N-K2
19. B-Q2	N-B5
20. P-QR4	B-R3
21. PxP	BxP
22. KR-B1	N-B3
23. B-QB3	KR-Q1
24. B-B1	P-R5
25. BxN	BxB
26. RxP	B-N4
27. R-R3	R-Q6
28. R/3-R1	P-R4
29. N-Q2	N-Q5
30. BxN	RxB
31. Q-B3	R/1-Q1
32. N-N3	RxP
33. Q-R5	QxQ
34. NxQ	R-QR5
35. RxR	BxR
36. P-B6	K-B1
37. P-B7	R-B1
38. R-B5	K-K2
39. N-B4	B-Q2
40. K-N2	R-KR1
41. N-N6	K-Q3
42. P-B8/Q	BxQ
43. RxB	RxR
44. NxRch	K-B2
45. N-K7	K-Q2
46. N-N8	P-R5
47. P-N4	K-K1
48. K-R3	K-B1
49. N-R6	PxN
50. KxP	K-N2
51. K-N3	K-N3
52. K-R4	P-B3

White Korchnoi	Black Spassky
English - Game 5	
1. P-QB4	P-QB4
2. N-KB3	N-KB3
3. N-B3	N-B3
4. P-Q4	PxP
5. NxP	P-K3
6. P-KN3	Q-N3
7. N-N3	B-N5
If 7...N-K4, 8. P-K4 B-N5, 9. 2-K2 P-QR4, 10. B-K3 Q-B3, 11. P-B3 O-O, 12. N-Q4 and Blacks has an ineffective counter-attack that lost for him in Karpov-Miles, Tilburg, 1977.	
8. B-N2	Q-R3!?
Blacks can try 8...N-K4, 9. B-K3 Q-R3, 10. P-B5 N-B5, 11. B-QB1 P-Q4, 12. PxPep O-O, 13. O-O BxP, 14. Q-23 R-N1, 15. P-QR4! but he will have trouble developing his Q-side.	
9. N-Q2	...
Possible is the gambit 9. P-B5 Q-B5, 10. B-Q2!? BxP, 11. R-QB1 giving White some compensation for the pawn. The next move allows Blacks smooth development.	
9. ...	BxN
10. PxB	O-O
11. O-O	P-Q4
12. Q-N3	B-Q2
13. Q-R3	N-Q4
14. PxP	PxP
15. P-QB4!	...



Opening French
Game 6

Getting rid of the backward QBP. If 15... PxP, 16. B-N2 QR-B1, 17. B-QB3 N-B3, (17... P-QN3?, 18. BxKN! PxP, 19. N-K4 + -), 18. QxQ PxQ, 19. NxP with a clear 2- Bishop positioned advantage.

15. ... B-N5
16. B-N2! ...

Black can't take the pawn since 16... BxP, 17. KRK1 BxP, 18. NxP PxN (18... NxN, 19. QxQ PxQ, 20. BxN PxP, 21. BxP QR-B1, 22. R-K7 with a deciding advantage), 19. B-QB3 P-QN3, 20. BxPN PxP, 21. BxR RxB, 22. R-K5 and Black does not have sufficient compensation for the last exchange.

16. ... N-K5
17. NxN PxN
18. B-QB3 NxP
19. QxQ PxQ
20. BxKP QR-N1
21. P-B3 B-K3
22. KR-N1 P-QR4
23. B-Q3 P-R5
24. K-B2 P-R6
25. R-N3 N-N7
26. RxP NxBch
27. PxN KR-Q1!
28. R-Q1 ...

28. RxP is no better since 28... RxP, 29. B-K5 R-QB1, 30. R-K1 B-Q4, 31. P-B4 P-B3, 32. B-R1 RQB7ch, 33. R-K2 R/6-Q7 forces recovery of the vital pawn.

28. ... R-Q2
29. P-N4 P-B3
30. R-Q2 K-B2
31. R-R4 R-N4
32. B-Q4 P-QR4
33. B-B3 R-B2
34. R-R3 P-R5
35. B-Q4 R-N5
36. R-B3 RxR
37. BxR R-N4
38. P-QR3 P-R4
39. P-R3 PxP
40. RPxP P-B4
41. P-N5 R-N6
42. B-N4 P-B5
43. R-K2 B-Q4
44. R-K5 1/2-1/2

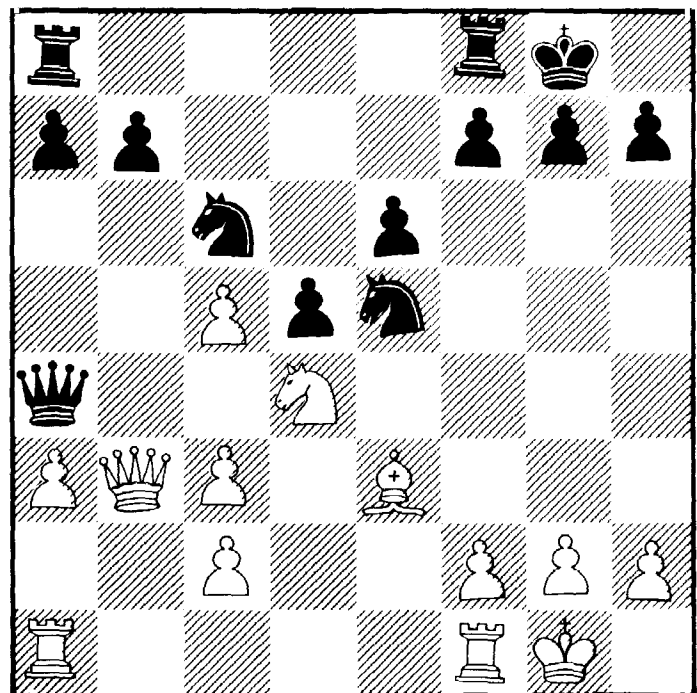
White
Spassky

Black
Korchnoi

1. P-K4 P-K3
2. P-Q4 P-Q4
3. N-QB3 B-N5
4. P-K5 P-QB4
5. P-QR3 BxNch
6. PxP N-K2
7. N-B3 B-Q2
8. PxP Q-B2
9. B-Q3 B-R5
10. B-K3 N-Q2
11. Q-N1 N-QB3
12. N-Q4 N/2xP
13. B-QN5 Q-R4
14. BxB QxB
15. O-O ...

If 15. QxP, then 15... R-QN1, 16. Q-B7 O-O, 17. NxN NxN, 18. O-O KR-B1, 19. Q-N3 QxBP gives Black a clear advantage along the file.

15. ... O-O
16. Q-N3 ...



16. ... QxQ

If Black attempts 16... Q-R3 then 17. KR-N1 QR-N1, 18. B-B4 and Black must face the unpleasant threat of 19. NxN.

17.	PxQ	KR-B1
18.	N-N5	N-KN5
19.	N-Q6	NxB
20.	PxN	R-B2
21.	P-QR4	N-K4
22.	P-QN4	P-QN3
23.	P-K4	NPxP
24.	KPxP	KPxP
25.	KR-Q1	PxP
26.	PxP	N-B5
27.	RxP	R-Q2
28.	N-B5	RxR
29.	N-K7+	K-B1
30.	NxR	R-Q1
31.	N-B3	R-Q7
32.	P-R5	R-QB7
33.	N-N5	P-QR3
34.	N-Q4	R-Q7
35.	N-B6	R-N7
36.	R-Q1	P-N4

Black can trade rooks with 36 ... RxPch, 37. KxR N-K6ch, 38. K-B3 NxR but he then loses to 39. P-N5! as this forces the Queen.

37.	R-Q3	P-R4
38.	P-R3	P-R5
39.	P-N3	PxP
40.	RxP	P-B3
41.	R-QB3	N-K4
42.	NxN	PxN
43.	R-B5	RxP
44.	RxP	R-KR5

½-½

Spassky's First Win Opening: Queen's Gambit Declined

White Korchnoi	Black Spassky
1. P-QB4	P-K3
2. N-QB3	P-Q4
3. P-Q4	B-K2
4. N-B3	N-KB3
5. B-N5	P-KR3
6. B-R4	O-O
7. P-K3	P-QN3
8. R-B1	B-N2
9. BxN	BxB
10. PxP	PxP
11. P-QN4	P-B3
12. B-Q3	R-K1
13. O-O	N-Q2
14. Q-N3	...

The threat is 15. P-N5!, forcing a split of Black's Q-side pawns.

14.	...	N-B1
15.	KR-Q1	...

Again, 16. P-N5 is threatened.

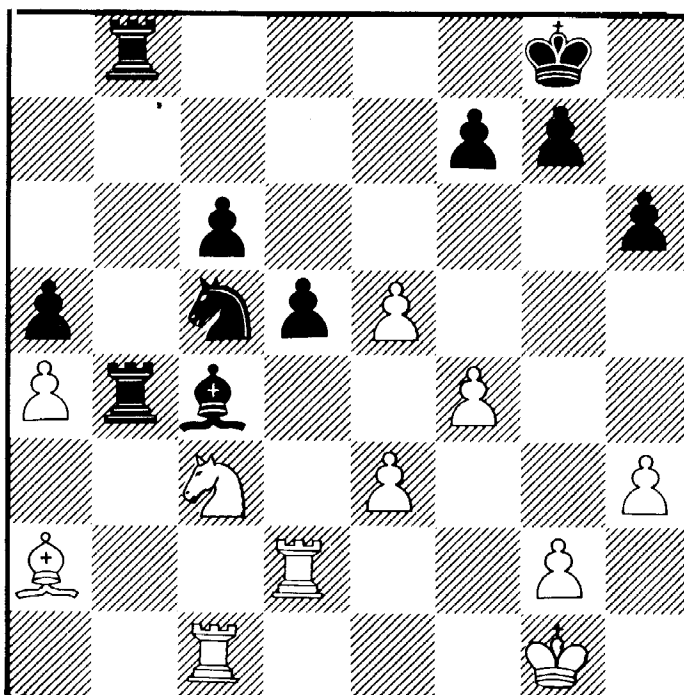
15.	...	R-B1
16.	B-N1	N-K3
17.	P-QR4	B-R1
18.	B-R2	R-B2
19.	Q-N1	...

Possibly better is 19. P-N5 P-B4, 20. PxP (20. NxP BxN, 21. QxB R-Q2, 22. Q-R5 PxP gives nothing for White) RxP with equality.

19.	...	P-QR4
20.	PxP	PxP
21.	Q-N6	R-N2
22.	QxQ	...

If 22. QxBP?? R-N3 traps the Queen.

22.	...	RxQ
23.	N-K1	R-N3
24.	N-Q3	KR-N1
25.	P-KR3	B-N2
26.	N-K5	BxN
27.	PxB	R-N5
28.	P-B3	B-R3
29.	R-Q2	...
29.	P-K4? P-Q5, 30. N-N1 B-K2, 31. R-K1 P-Q6, 32. RxP R-N7!, 33. BxN RxN -+	
29.	...	B-B5
30.	P-B4	N-B4



Black controls every piece of real estate on the Q-side and there is nothing White can do about it.

31. R-Q4 N-Q6
32. R-Q1 N-N7
33. R-QB1 P-QB4
34. RxP ...

If 34. R-Q2, Black wins the pawn and keeps up the bind with 34. ... BxB, 35. NxB RxRP, 36. N-B3 R-B5, 37. RxP? N-R5, 38. N-K2 RxRch, 39. NxR R-N8ch, 40. R-Q1 N-B6, 41. R-K16 RxN puts White out of his pair.

34. ... BxR
35. BxB P-B5
36. N-K4 NxP
37. O-1

Game 8

Opening: French

White Spassky Black Korchnoi

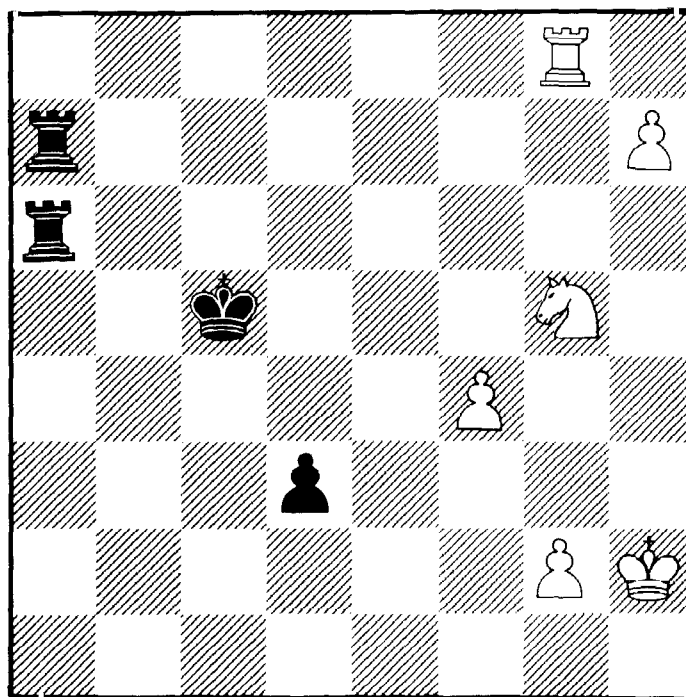
1. P-K4 P-K3
2. P-Q4 P-Q4
3. N-QB3 B-N5
4. P-K5 P-QB4
5. P-QR3 BxNch
6. PxP N-K2
7. N-B3 B-Q2
8. PxP Q-B2
9. B-Q3 B-R5
10. O-O N-Q2
11. N-Q4 NxBP
12. B-N5ch BxB
13. NxB QxP
14. R-K1 N-K5
15. P-B3 P-QR3
16. N-Q4 NxP
17. Q-Q2 Q-B2
18. P-QR4 QR-B1
19. B-N2 P-QN4
20. BxN QxB
21. QxQ RxQ
22. PxP PxP
23. NxP RxQBP
24. N-Q6ch K-Q2
25. NxP R-QN1
26. R-R7ch K-K1
27. N-K5 R/1-N7
28. R-R8ch N-B1
29. N-Q3 R-N3
30. P-R4 K-Q2
31. R-R4 K-Q3
32. R-KN4 R-Q7

Black keeps his material with 32. ... R-B2, 33. R-N5 K-R2, 34. R-K5 R-B3, 35. N-B4 K-Q2 Although untangling his cramped pieces will pose a difficult job.

33. N-B4 P-K4
34. N-R5 P-N3
35. N-B6 R-N2
36. N-K8ch K-Q2
37. RxKP R-N8ch
38. K-R2 N-K2
39. R-R4 N-B3
40. N-B6ch K-Q3
41. R-N5 R-N2
42. R-R6 R-KB2
43. NxRP K-B4
44. RxP N-K4
45. N-N5 NxR
46. RxN ...

A draw is meritable after 46. NxR NxP, 47. K-N3 NxNP.

46. ... R-QR2
47. P-R5 R/7-R7
48. P-B4 P-Q5
49. P-R6 P-Q6
50. R-N8 R/7-R3
51. P-R7 ...



51. R-KR8 does not help due to 51. ... R-Q2, 52. P-R7 R-R3ch, 53. K-N3 R/3xP!, 54. NxR P-Q7, 55. N-B6 R-N2ch - +.

51. ... RxPch

52.	K-N3	R-Q2
53.	R-B8ch	K-N5
54.	R-N8ch	K-R6
55.	N-K4	P-Q7
56.	NxP	RxN
57.	R-N8	K-N5
58.	K-B3	K-B4
59.	P-N3	R-R6ch
60.	K-K4	R-K7ch
61.	K-B5	K-Q3
62.	P-N4	R-R4ch
63.	K-N6	R-K3ch
64.	K-R7	R-R2ch
65.	R-N7	RxRch
66.	KxR	R-K5
67.	O-1	

(From the N Y Times:)

When Boris Spassky fell five points behind after ten games, it seemed he was finished. But he then proceeded to win the next four games and close the score to $7\frac{1}{2}$ - $6\frac{1}{2}$. What had happened to the apparently invincible Korchnoi?

In game 11, his hesitating play allowed Spassky to win in solid, classical style. In game 12, Korchnoi lost on time even though Spassky had missed a mate. In game 13, Korchnoi sacrificed his queen for absolutely nothing and resigned. In game 14, he deviated from his usual Winawer and played 1. ... P-K4 and still lost.

Disputes during the match had set both players' nerves on edge but it was obvious that Korchnoi was more strongly affected. Spassky, objecting to Korchnoi's glowering at him, retreated to an isolation booth on stage and analyzed from the demonstration board, emerging only to make his moves. Korchnoi was infuriated by his intermitently invisible opponent and complained to the arbitor but was overruled. Again objecting, this time to noise from the 3000 spectators at the Trade Union Palace where the match was being conducted, Korchnoi persuaded the referee to remove the first ten rows of seats from the auditorium.

Korchnoi managed to pull himself together and won the 15th game. Games 16 and 17 were drawn and Korchnoi won the 18th game to wrap up the match with a score of $10\frac{1}{2}$ - $7\frac{1}{2}$.

Game 11

Queen's Gambit Declined

White Korchnoi	Black Spassky
1. P-QB4	P-K3
2. N-QB3	P-Q4
3. P-Q4	B-K2
4. N-B3	N-KB3
5. B-N5	O-O
6. P-K3	P-KR3
7. B-R4	P-QN3
8. R-B1	B-N2
9. BxN	BxB
10. PxP	PxP
11. P-QN4	P-B3
12. B-K2	N-Q2
13. O-O	P-QR4
14. P-N5	P-B4
15. PxP	NxP
16. N-Q4	Q-Q3
17. B-N4	KR-Q1
18. R-K1	N-K3
19. BxN	PxB
20. N-B6	QBxN
21. PxB	BxN
22. RxB	QR-B1
23. Q-B2	P-K4
24. P-B7	R-Q2
25. R-QB1	P-Q5
26. R-B6	Q-Q4
27. Q-N1	P-Q6
28. QxNP	P-Q7
29. R-Q1	QxP
30. P-R3	Q-R5
31. RxQP	RxR
32. Q-N7	R/7-Q1
33. PxR/Qch	RxQ
34. R-B7	Q-R8ch
35. K-R2	P-K5
36. QxP	Q-B3
37. P-B4	Q-B1
38. R-R7	Q-QB4
39. Q-N7	Q-B6
40. Q-K7	R-KB1
41. P-K4	Q-Q5
42. P-B5	P-R4
43. RxP	Q-Q7
44. Q-K5	Q-N4

45.	R-R6	R-B2
46.	R-KN6	Q-Q1
47.	P-B6	P-R5
48.	PxP	1-0

Game 13

Dutch Defense

Game 12

French

White Spassky	Black Korchnoi
1. P-K4	P-K3
2. P-Q4	P-Q4
3. N-QB3	B-N5
4. P-K5	P-QB4
5. P-QR3	BxNch
6. PxP	N-K2
7. Q-N4	PxP
8. PxP	Q-B2
9. K-Q1	O-O
10. N-B3	P-B3
11. B-Q3	N-B4
12. Q-R3	N-B3
13. P-N4	PxP
14. PxP	NxP
15. NxN	...

If 15. PxN NxB, 16. PxN Q-B6, 17. R-R2 P-K4! giving an overwhelming counter attack. If 15. B-KB4? NxB, 16. BxQ NxPch, 17. K-K2 NxQ, 18. PxN Rx6 and Black's B pawns ahead.

15. ...	QxN
16. R-Qn1	N-R3
17. R-K1	Q-B2
18. BxN	PxB
19. P-N5	P-K4
20. Q-N3	P-KR4
21. RxKP	B-N5ch
22. K-B1	Q-N2
23. Q-K3	R-B6
24. Q-Q4	R-Q1
25. R-N4	P-N3
26. B-K4	RxBP
27. P-R3	R-B8ch
28. K-N2	BxP
29. BxQPch	K-R1
30. Q-B3	R/8-B1
31. B-N3	B-B4
32. R-KB4	R-B1
33. B-B4	B-N3
34. R-B6	KR-K1
35. R-Q5	R-B2
36. Q-Q4	P-R5
37. B-N3	...

White must have been in the same time pressure Black was. 37. R-Q8!! R/2-K2, 38R-B8ch RxR. 39. RxR mate

38. Q-KR4 and Black lost on time. -8-

White
Korchnoi

Black
Spassky

1. P-QB4	P-K3
2. N-QB3	P-KB4
3. P-KN3	N-KB3
4. B-N2	B-K2
5. P-K3	O-O
6. KN-K2	P-B3
7. P-Q4	P-Q4
8. P-N3	B-Q2
9. B-N2	B-K1
10. N-B4	B-B2
11. N-Q3	QN-Q2
12. Q-B2	R-B1
13. P-B5	P-QN3
14. P-QN4	P-KN4?
15. N-K2	B-N3
16. P-KR4	P-KR3
17. RPxP	RPxP
18. N-K5	B-R2
19. P-B3	PxP
20. QPxP	NxN
21. BxN	N-Q2
22. B-N2	B-B3
23. N-Q4	Q-K2
24. P-B4	R-KB2
25. O-O-O	P-R4
26. P-R3	RPxP
27. RPxP	P-N5
28. B-B1	BxN
29. BxB	P-K4
30. PxKP	NxKP
31. B-Q3	N-B6!
32. BxP??	RxB
33. QxR??	BxQ
34. O-1	

Game 14

Vienna

White
Spassky

Black
Korchnoi

1. P-K4	P-K4
2. N-QB3	N-KB3
3. P-KN3	P-Q4
4. PxP	NxP
5. B-N2	NxN
6. NPxN	B-Q3
7. N-B3	O-O

Early aggression with 7...P-K5 rebounds after 8. N-Q4 P-KB4, 9. P-Q3.

- | | | |
|-----|------|-------|
| 8. | O-O | P-QB4 |
| 9. | P-Q3 | N-B3 |
| 10. | N-Q2 | Q-Q2 |

Hoping for 11... P-QN3 and 12... B-N2. White's next move stops all that.

- | | | |
|-----|------|------|
| 11. | Q-B3 | Q-B2 |
| 12. | N-K4 | B-K2 |
| 13. | B-K3 | P-B5 |
| 14. | P-Q4 | B-K3 |

The ambitions 14... P-B4 is risky in view of 15. N-N5 P-K5, 16. Q-K2 N-R4, 17. P-B3 P-KR3, 18. N-R3 PxP, 19. QxP and Black has a loose, underdeveloped position. In this line, 15... P-B5, 16. Q-Q5ch K-R1, 17. N-B7ch RxN, 18. QxR PxB with mate following after 19. Q-K8ch.

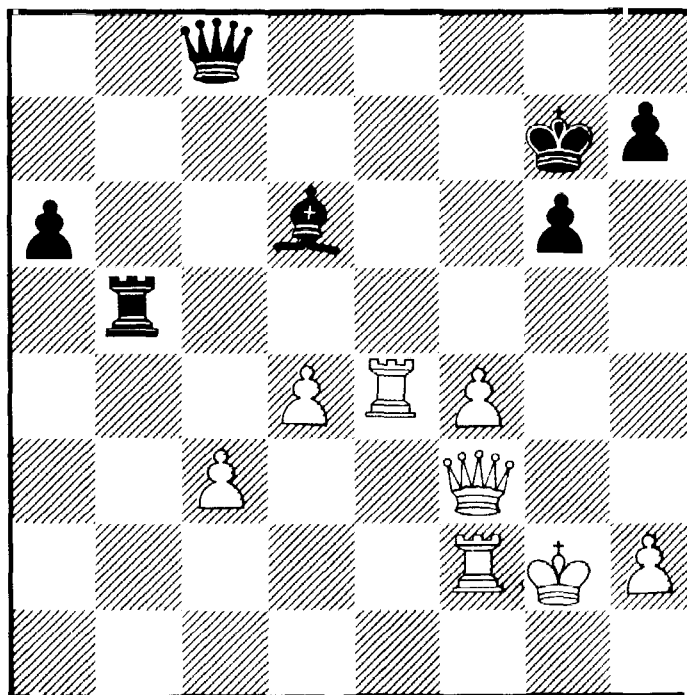
- | | | |
|-----|---------|-------|
| 15. | KR-Q1 | QR-Q1 |
| 16. | Q-K2 | B-Q4 |
| 17. | QR-N1 | PxP |
| 18. | PxP | KR-K1 |
| 19. | N-B3 | BxB |
| 20. | KxB | N-R4 |
| 21. | Q-B3 | N-B3 |
| 22. | Q-K2 | N-R4 |
| 23. | P-QR4 | P-QN3 |
| 24. | Q-B3 | Q-Q2 |
| 25. | R-N5 | N-N2 |
| 26. | B-B4 | N-Q3 |
| 27. | BxN | BxB |
| 28. | N-K4 | B-K2 |
| 29. | P-B3 | P-N3 |
| 30. | P-N4 | R-KB1 |
| 31. | R/1-QN1 | P-OR3 |
| 32. | RxP | P-B4 |
| 33. | PxP | RxP |
| 34. | Q-K2 | QxRP |
| 35. | R-N7 | R-K1 |
| 36. | R-B7 | B-Q3 |

36... B-Q1, 37. R-N4! QxR, 38. PxQ BxR, 39. N-B6ch.

- | | | |
|-----|------|------|
| 37. | RxBP | RxN? |
|-----|------|------|
- 37... Q-Q2 gives Black considerable counter-play.

- | | | |
|-----|--------|--------|
| 38. | R-B8ch | K-N2 |
| 39. | QxR | Q-R7 |
| 40. | R-KB1 | Q-B2 |
| 41. | P-KB4 | R-KR4 |
| 42. | R-K8 | Q-N6 |
| 43. | R-K6 | Q-N7ch |
| 44. | Q-K2 | Q-N1 |
| 45. | Q-K4 | Q-N7ch |
| 46. | Q-K2 | Q-N1 |

- | | | |
|-----|------|------|
| 47. | R-K4 | R-N4 |
| 48. | R-B2 | Q-N2 |
| 49. | Q-B3 | Q-B1 |



- | | | |
|-----|--------|-------|
| 50. | R-K5 | BxR |
| 51. | BPxB | Q-KB4 |
| 52. | P-B4 | R-N5 |
| 53. | Q-K3 | Q-QB1 |
| 54. | P-K6 | RxP |
| 55. | Q-K5ch | K-R3 |
| 56. | Q-B4ch | K-N2 |
| 57. | Q-B6ch | K-R3 |
| 58. | Q-R4ch | 1-0 |

Game 15

English

White
Korchnoi

Black
Spassky

- | | | |
|-----|-------|-------|
| 1. | P-QB4 | P-QB4 |
| 2. | N-KB3 | N-KB3 |
| 3. | N-B3 | N-B3 |
| 4. | P-Q4 | PxP |
| 5. | NxP | P-K3 |
| 6. | P-KN3 | Q-N3 |
| 7. | N-N3 | N-K4 |
| 8. | P-K4 | B-N5 |
| 9. | Q-K2 | O-O |
| 10. | P-B4 | N-B3 |
| 11. | B-K3 | Q-B2 |
| 12. | B-N2 | P-Q4 |

13.	P-K5	N-K5
14.	O-O!	BxN
15.	PxP	PxP
16.	PxB	P-QN3
17.	QR-B1	P-B4
18.	PxPep	NxKBP
19.	N-Q4	R-K1
20.	Q-Q3	N-QR4
21.	N-N5	Q-B3
22.	B-Q4	N-K5
23.	B-K5	B-R3
24.	P-QR4	N-B5
25.	Q-Q4!	NxB
26.	PxN	BxN
27.	PxB	QxNP
28.	P-B4!	Q-B4
29.	QxQ	NxQ
30.	BxPch	N-K3
31.	R-R1	P-QR4
32.	BxR	RxB
33.	QR-N1	P-R5
34.	RxP	N-Q5
35.	R-Q2	1-0

In view of 35... N-N6, 36. P-K6
P-R6, 37. P-K7

Game 18

French

White
Spassky

Black
Korchnoi

1.	P-K4	P-K3
2.	P-Q4	P-Q4
3.	P-K5	P-QB4
4.	P-QB3	N-QB3
5.	N-B3	B-Q2
6.	B-K2	KN-K2
7.	N-R3	PxP
8.	PxP	N-B4
9.	N-B2	N-N5
10.	N-K3	NxN
11.	PxN	B-K2
12.	P-QR3	N-B3
13.	P-QN4	P-QR3
14.	R-QN1	N-R2
15.	P-QR4	N-B3
16.	B-Q2	P-QR4
17.	P-N5	N-N5
18.	O-O	O-O
19.	Q-K1	P-B3
20.	Q-N3	P-B4
21.	QR-B1	K-R1
22.	P-R4	R-B1
23.	P-R5	RxR
24.	RxR	N-R7
25.	R-R1	N-N5

26.	Q-R3	B-K1
27.	K-B2	Q-N3
28.	P-N4	P-N4
29.	PxPep	BxKNP
30.	P-N5	P-B5
31.	PxP	N-B7
32.	R-Q1	B-K5
33.	B-K3	NxB
34.	KxN	Q-B2
35.	P-KN6	BxP
36.	QxP	B-R6
37.	QxP	B-B8ch
38.	K-B2	BxP
39.	Q-B4	Q-N2
40.	R-KN1	Q-R3
41.	Q-B3	O-1

White's chances for saving the game are not worth much but one would think he would make Korchnoi demonstrate the winning line.
41... B-Q7, 42. Q-R3 B-K5, 43. R-N3 Q-R7ch, 44. R-N2 Q-R5ch, 45. R-N3 (45. K-B1 Q-K8 mate, or 45. K-N1 RxN! 46. BxR Q-K8ch, 47. K-R2 B-B5ch, 48. K-R3 B0B4ch, 49. B-N4 Q-R8ch, 50. R-R2 QxR mate) B-K8ch!, 46. KxB (46. K-B1 B-N5!, 47. Q-K3 QxR, 48. QxB, Q-K8ch, 49. K-N2 R-N1ch, 50. K-R2 Q-N6ch, 51. K-R1 Q-N7 mate) QxRch, 47. K-Q2 RxN, 48. BxR QxB with Black emerging a piece ahead.

13th North Dakota Open
Date: October 16, 1977

Nimzo - Indian Defense

White	Black
Mariano Acosta (2210)	Irwin Lipnowsky (2390)

1.	P-Q4	N-KB3
----	------	-------

Instead of occupying the center with a paqn, as was normally done in earlier times, Black exerts pressure on the center with his KN. For that reason White cannot now play P-K4 without further preparation.

Strictly speaking an "Indian" structure involves a fianchetto. But it is commonly accepted that all QP games where Black plays 1... N-KB3 and does not contest White's center by direct means are known as Indian systems.

2. P-QB4 P-K3
3. N-QB3 B-N5

The Nimzo-Indian Defense, pioneered and welded into a coherent defensive plan by Aron Nimzowitsch, the Latvian-born Danish GM who was one of the strongest and most original players of the first third of this century.

In agreement with modern principles the text can be regarded as indirect pressure against the White center. The idea behind 3... B-N5 is to present a White P-K4 and also to get a more active opening than Black often does with the QGD. In the Nimzo Black is willing, if necessary, to exchange his KB for White's QN in order to get a rapid development and sometimes to force the doubling of White's QBP. In many games it has been shown that the doubled QBP may constitute a serious weakness in White's position

Any defense in which Black voluntarily renounces the Bishop pair, thereby also creating an unbalanced pawn structure, tends to sharp and dynamic situations in which draws are unlikely. The Nimzo therefore appeals to positional players who are ambitious to win games as Black against 1P-Q4.

4. P-QR3 ...

The Sämisch Variation, named after the German GM Friedrich Sämisch (1896-1975). This brings about the doubled pawn complex in its most extreme form. White forces Black to exchange Bishop for Knight, reasoning that the doubled pawn will lend his own center increased resiliency.

White's fourth move choices are: (1) Rubinstein's 4P-K3, which is the most important line today and occurs in 75% of modern master games with the Nimzo; (2) the classical 4Q-B2 the only method of avoiding doubled pawns that is current in Master play; and (3) Spassky's 4B-N5.

4. ... BxNch
 5. PxB P-B4!
 6. P-B3 ...
- Another reply is 6P-K3
6. ... N-B3
 7. P-K4 P-Q3
 8. B-Q3?! ...

This loses a pawn with no apparent compensation. It was played in a game found in Rolf Schwarz Nimzowitsch-Indisch, although the continuation was: 8... O-O 9. N-K2 P-K4, 10. O-O P-QN3, 11. B-N5 B-R3, 12. P-B4 BPxP, 13. PxP PxP, 14. N-N3 K-R1, 15. N-R5 with White slightly better.

Safe is 8. N-K2 or 8. B-K3

8. ... PxP

The text move was also played against me by Leonid Bass in the 14th Annual Empire City Open, NY 1977 in which I lost. Having found some improvements, I decided to repeat it.

9. PxP NxQP
10. B-N2 N-B3
11. Q-B2 O-O
12. N-K2 N-Q2
13. O-O N-B4
14. K-R1 ...

Just on time. Black was threatening 14... NxB followed by 15... Q-N3ch.

14. ... P-QN3

Possible was 14... N-K4 which could be answered by 19. N-B1.

15. P-B4 B-N2
16. Q-B3 ...

This saves the Bishop from being exchanged, as White threatens mate at KN7.

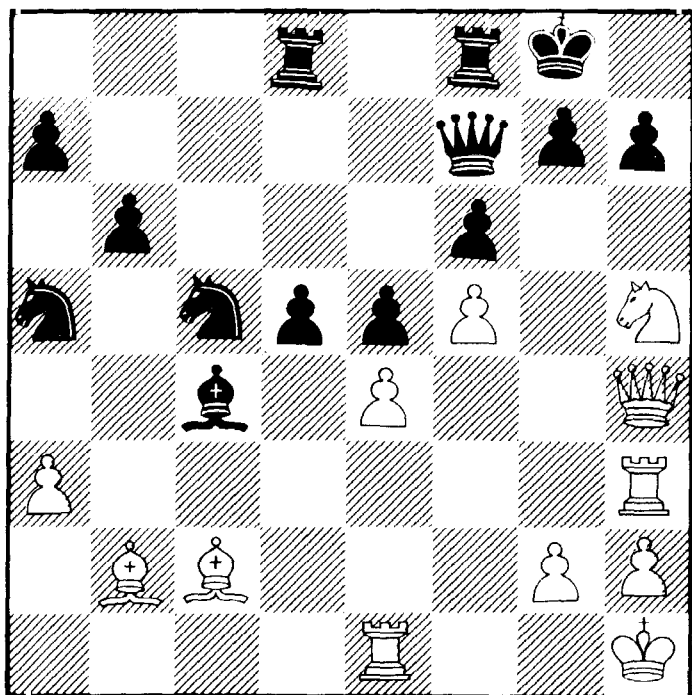
16. ... P-B3
17. B-B2 Q-K2
18. QR-K1 P-K4
19. P-B5! N-R4
20. N-N3 B-R3

Another pawn falls, leaving White no choice but to go for an all-out attack on the K-side.

21. N-R5 BxP
 22. R-B3 Q-B2
- Better is 22... B-B2.
23. R-R3 QR-Q1

24. Q-N3
25. Q-R4

P-Q4
...



Better is 44... R-B1.

45. Q-N8ch K-R3
46. Q-B8ch K-R4
47. B-N4ch K-N4?

Good is 47... K-R5.

48. R-QN1 K-B5
49. R-B1ch K-N6
50. R-B3ch K-N7
51. RxB Resigns

Kerkay of Minneapolis won this tourney with a perfect score of 5 pts. after defeating N.D. Champion Stephan Pope1 (4). Col. Abe Thompson, Fletcher Baragar of Canada and I tied for 2nd - 4th with 4½ pts. each.

G.C.A. Correspondence Championship
February 1978
French Defense

White J. E. Morrison Black J. Pressley

25. ... PxP
26. NxP! QxN
27. R-KN3 R-Q7
28. B-B1 RxB
29. RxQch ...

I saw 29. B-R6 but didn't play it as it looked risky. However, White gets a winning position after 29... R-B2 30. RxQch! RxR, 31. QxP R/7xP, 32. BxR RxB, 33. Q-Q8ch K-B2, 34. P-B6 N-B3, 35. Q-B7ch.

29. ... KxR
30. B-R6ch K-B2
31. BxR N-Q6
32. Q-R6 N-B3
33. R-R1 P-K6
34. B-Q6 K-K1
35. QxKP N-B5
36. Q-K4 B-Q6!
37. Q-B3 K-Q2
38. B-N4 N-Q5
39. Q-N7ch R-B2
40. Q-R8 B-N4
41. Q-KN8 B-B3
42. QxPch K-B1
43. Q-N8ch K-N2
44. B-Q6 R-Q2

1. P-K4 P-K3
2. P-Q4 P-Q4
3. N-Q2 N-KB3
4. P-K5 KN-Q2
5. B-Q3 P-QB4
6. P-QB3 N-QB3
7. N-K2 Q-N3
8. N-KB3 PxP
9. PxP P-B3
10. N-B3! ...

White has reached an almost ideal position, Black should be cautious.

10. ... PxP
11. PxP N(2)xP?
12. NxN NxN
13. Q-R5+ N-B2
14. B-N5+ K-K2
15. O-O P-KR3?

does nothing for Black's development, but it is hard to find good moves for Black. If 15... B-Q2; 16. BxB, KxB; 17. QxN+.

16. R-K1 Q-Q1

At this point White set up the board for the first time.

17. NxP+ 1-0

Atlanta-Philadelphia Match January 11, 1978
(Pre-season exhibition match of the National Chess League)

VIENNA GAME

White: Mike Decker 2074 (Atlanta)
Black: Karl Dehmelt 2275 (Philadelphia)

1. e4 e5
2. Nc3 Nf6

Black's only try for an unbalanced position. 2...Nc6 leads to symmetrical, drawish positions (one of which I still managed to lose to Grandmaster Bisguiev a week later) while 2...Bc5 gives White a slight but safe positional edge.

3. f4

3. Bc4 is more commonly played and leads either to symmetrical positions or to the complicated exchange sacrifice line of 3...Nxe4 4. Qh5, Nd6 5. Bb3, Nc6 6. Nb5!, g3 7. Qf3, f5 8. Qd5, Qe7 9. Nxc7+, Kd8 10. Nxa8, b6 or Bh6 which is often given as good for White but which in practice is difficult to hold much less to win.

3. ... d5

3...ef? 4. e5 and Black's Knight will eventually have to go back to g8 (4...Qe7 5. Qe2) after which White recovers his pawn with a nice lead in development.

4. fe Nxe4
5. d3 Nxc3

Best. 5...Qh4+! is bad because of 6. g3, Nxc3 7. Nf3, Qh5 8. Nxd5 and if 8... Na6? or Kd8? then 9. Nf4 wins a piece while 8... Nxh1 9. Nxc7+, and 10. Nxa8 leads to a freaky position where White is definitely better.

5... Bb4!? is somewhat better but peters out to a preferable ending for White after 6. de, Qh4+

7. Ke2, Bxc3 8. bc, Bg4+ 9. Nf3, ed 10. Qd4!, Bh5! 11. Ke3!, Bxf3! 12. Bb5+!, c6 13. gf, cb 14. Qxe4, Qxe4+ (or 14... Qh6+ 15. Kf2, Qc6 16. Qd4± steinitz) 15. Kxe4, 0-0 (15... Nc6 or d7 leads to very similar play) 16. Rb1! (White wins a pawn since 16... a6 17. c4 or a4 allows him to penetrate to the seventh rank), Nd7 17. Rxb5± Decker-Van Dalfsen (Holland), correspondence.

6. bc d4

6...c5! is best and almost unknown to theory. White's best may be to transpose to (of all things) a Winawer-French formation in which Black has retained his King's Bishop and lacks his cramping pawn on e6: 7. d4, Be7 8. Nf3, Nc6 9. Bd3, c4 10. Be2 (Decker-Loeffler (Argentina), correspondence) and now I feel that 10... Be6 gives Black the better game - at any rate, I am no longer playing the Vienna Gambit in serious postal events any more. But over-the-board who's going to luck into all that?

7. Nf3 dc
8. Be2 Nc6
9. 0-0 Bc5+
10. Kh1 0-0
11. Qe1 Nd4
12. Bdl Nxf3
13. Bxf3

All according to theory but not well-known. I had used 1 minute and my opponent 8 minutes for the opening. ECO says =, Keres ±, Eales 7.

13 ... Rb8

A new move designed to liberate the White-squared Bishop. In yet another postal game (with a master who has

played 4th board for the Soviet Union's postal chess team!) I faced 13... Re8 14. Qg3,c6 15. Bg5,Be7 16. Be3,Be6 17. a4,a5 18. d4,Bd5 19. Be2,Bh4!? 20. Qg4,Re6 21. Bd3,b5 22. Rf4!, Be7 23. Rf1,Rg6! 24. Bxg6, hg and after 3 years and 35 moves the position is still unclear (Decker-Skotovenko).

14.	Qg3	Kh8
15.	Be4	Be7
16.	Be3	b6
17.	d4	Be6
18.	Rad1	

18. d5 was tempting because of 18... Bxd5 19. Rad1,c6 20. Qh3,g6 21. Qh6 with the idea of R-f3-h3 but I thought I had an edge by simply developing and not forcing the position. Black's extra pawn is almost irrelevant on c3.

18.	...	Bd5
19.	Bd3	Re8

If Bxa2 either now or later White has the choice of continuing his build-up on the King-side or of recovering a pawn on the a-file.

20.	Qh3	g6
21.	Qh6	

Primarily to keep Black from trading Bishops on g5.

21.	...	Bf8
22.	Qf4	Bg7

Black seems to have consolidated his position but his heavy pieces and King's Bishop are not nearly so well placed as White's, his extra pawn is of uncertain use, and White can try to open up either the f or h-files for attack.

23.	h4	Qd7
-----	----	-----

With the cheap threat of Qh3+, both sides had gotten in some time-pressure now so more such traps begin to appear.

24.	Kh2	Qe7
25.	h5	Kg8
26.	Qg3	

Opening up g5 for the Bishop which is now aiming for f6.

26.	...	c5?!
-----	-----	------

Black probably should not open the position despite the mutual time pressure.

27.	Bb5	Rf8
28.	Bg5	Qb7
29.	Bf6	a6

29... Bxf6 may have been preferable although White will have strong pressure after either 30. Rxf6 or ef.

30.	Bxg7	Kxg7
31.	Qg5!	h6

31...	f6	32. ef+ \pm
-------	----	---------------

32.	Qf6+	Kh7
33.	Bd3	

Both sides now had two minutes to make more 40. Black's position is just as bad as it looks. If 33... Rg8 34. dc,bc then either 35. Rb1 or Rf4 is strong. Black, instead played the more obvious...

33.	...	Be4
34.	dc	Bxd3

34...bc? 35. Rb1! and Black cannot hold on to both his Bishop and KBP.

35.	Rxd3	bc
-----	------	----

Probably better, although very difficult to defend would be the ending after 35... Rbe8 36. c6,Qe7 37. Rd7.

36.	Rd6!	Qe4
-----	------	-----

37. Rd7 Kg8
 38. Rxf7 Rxf7
 39. Qxf7+ Kh8
 40. Qf6+ Kg8

IF 40... Kh7 41. Rf4, Qxc2
 42. Qf7+ and 43. hg wins since
 Black has no saving checks.

41. hg Qb7

Allowing a cute finish, but
 41...Qd5 allows 42. Rd1!, Qc4
 (or Qxa2) 43. e6, Rf8 44. Rd8

42. Rb1! Resigns.

This game submitted and annotated by
 Tom Bagby except where initials indi-
 cate Jacques Dowling. Jacques Dowling
 is a 70 year-old sculptress, and she
 is listed in various international vol-
 umes, including WHO'S WHO IN THE EAST
 and WHO'S WHO OF AMERICAN WOMEN.

WHITE: Bagby (GA.)
 BLACK: Dowling (FLA.)

1. P-Q4 P-Q4
 2. N-KB3 N-KB3
 3. P-QB4 P-QB3
 4. N-QB3 P-K3
 5. Q-B2

My intention was to play 6. P-K4.
 Later I either forgot this or de-
 cided that it was too risky. Any-
 way I bought a second-hand MCO
 shortly after this.

5. ... PxP
 6. P-K3? P-QN4
 7. P-QR4 B-QB5
 8. P-QN3 N-Q4
 9. B-N2

This protects the Rook and Knight
 and prevents 9...Q-QR4.

9. ... BxN +
 10. BxB P-N5!
 11. B-N2 P-B6
 12. B-B1 P-QR4
 13. P-K4!

The two central pawns kept Black's
 knights out of action for much
 of the game.

13. ... N-K2
 14. B-KB4 N-N3
 15. B-N3 O-O
 16. P-KR4! P-KR3
 17. P-KR5 N-K2
 18. R-Q1 B-N2
 19. B-KB4 N-Q2
 20. P-N4 P-KB3
 21. B-QB4

This was prevented earlier Because
 ...B-QR3 would have forced a swap-
 Here the threat of BxP gives White
 an extra move.

21. ... K-B2
 22. P-KN5 RPxP
 23. BxNP! B-R3

If 23...PxP then 24. NxP+ followed by
 25. NxP and 26. NxR gains material
 equality.

24. Q-Q3 Q-B1
 25. BxB QxB
 26. Q-K3 Q-B1

If 26...PxP

(1) 27. NxP+ K-B3... (2) K-K1... (3) K-N1
 28. Q-B4+ NxP NxP
 N-B4 Q-B1 R-B2
 29. PxN NxR N-B7 or
 K-K2 (P-R6)
 30. NxP etc.

27. P-KR6 R-R1
 28. R-KN1 N-KN3

I think 28...PxP is playable, but Black
 chooses to mobilize her knights.

29. PxP KxP
 30. N-KR4 NxN
 31. BxP++! K-B2

If 31...KxB

32. Q-N5+, K-B2
 33. Q-N7+, K-K1
 34. QxR+ ,...
 35. QxN

If I had looked more carefully I might have seen:

34. Q-N5
Q-K1 (Not Q-K1 but N-R5! is better for Black. J. D.)

35. PxN
(1) PxP+ (2) NxN (3) R-R8+
36. B-K7+ QxN+ K-K2

Q-R4+

37. QxQ

RxQ

38. RxN

RxP

39. B-K5

... and White

32. R-N7+ K-B1
33. Q-B4 N-KB4

(33. BxN!!; KxR; 34. Q-N5+, K-B1 (or B2)
35. Q-K7+, K-N1; 36. R-Q3 wins for White.
J. D.)

34. PxN??

The fatal mistake. For several moves I had intended to play 34. Q-N5! But just before I mailed the move, I noticed 34...Q-K1 which I thought would get Black out of trouble after

34. Q-N5 Q-K1
35. R-K7 R-R8+
36. K-K2 Q-R4+
37. QxQ RxQ

has a good game.

34. ... NxN

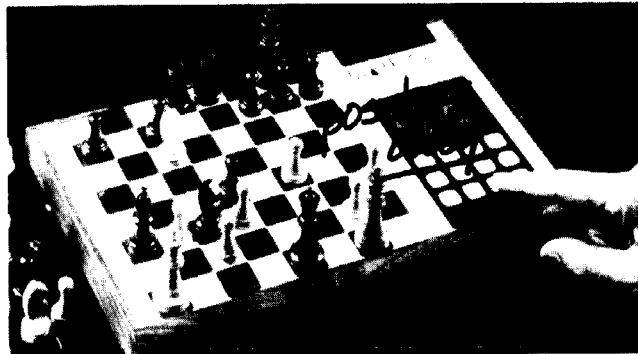
I should have resigned here, but the game continued...

35. Q-N5 N-Q4
36. R-Q3 Q-Q1
37. R-N8+? RxR
38. Q-R6+ K-K1
39. PxP Q-N4
40. Resign

THE CHESS CHALLENGER™

THE MICRO COMPUTER THAT JUST PLAYS CHESS

- Easy to play and great fun for the entire family, youngsters, hobbyists, shut-ins and retirees.
- Makes a wonderful gift for your favorite chess player.
- Teaches chess strategy.
- Chess board and chess pieces included.
- Use algebraic notation.
- Plays white or black pieces.
- Can give position verification at any time.
- AC powered 115 VAC.
- 10 day money back guarantee.



- Select from two challenging computer games.

The original single-level CHESS CHALLENGER™ is great for beginners. It plays only at level 1.
\$200.00

The upgraded version CHESS CHALLENGER™ lets you select your own playing level. It plays at three levels:
level 1 — class E-1000-1199
level 2 — class D-1200-1399
level 3 — class C-1400-1599
\$275.00

- Club discounts available.
- Full warranty.

I have enclosed my check for:
☐ \$200.00 for the single-level CHESS CHALLENGER™
☐ \$275.00 for the upgraded tri-level version CHESS CHALLENGER™
☐ Please send me more information on the CHESS CHALLENGER™

Name _____

Street _____

City _____ State _____ Zip _____

Mail to: Chess Computer
P.O. Box 10354
Atlanta, Georgia 30319

FRENCH DEFENSE
NEW YORK COMMERCIAL CHESS LEAGUE

WHITE: Cal Begun

BLACK: Mike Blecker (X)

- | | | |
|----|-------|-------|
| 1. | P-K4 | P-K3 |
| 2. | P-Q4 | P-Q4 |
| 3. | P-K5 | P-QB4 |
| 4. | P-QB3 | Q-N3 |
| 5. | N-KB3 | B-Q2 |

Intending B-N4, to swap the bad QB
for the good KB.

- | | | |
|----|-------|-------|
| 6. | Q-N3? | N-QB3 |
|----|-------|-------|

The open QR-File is worth more
than the doubled Pawns after QxQ.

- | | | |
|----|------|-----|
| 7. | QxQ? | PxQ |
| 8. | B-Q3 | ... |

If 8. B-QN5? NxKP

- | | | |
|----|-------|-----|
| 8. | ... | PxP |
| 9. | P-QR3 | ... |

If 9. PxP, N-N5 and RxP

- | | | |
|-----|-----|-------|
| 9. | ... | PxP |
| 10. | NxP | P-B3! |

Breaking up the White Center and
preparing the following:

- | | | |
|-----|-------|-------|
| 11. | N-QN5 | K-B2! |
|-----|-------|-------|

The K is safe here and now 12. PxP
if forced.

- | | | |
|-----|--------|-------|
| 12. | B-KB4? | N-N5! |
| 13. | N-B7 | NxB+ |
| 14. | K-Q2 | NxB |

Not 14...R-B, 15. KxN, RxN 16. PxP,
R-B 17. N-K5+, K-K1 18. P-B7+ with
counter chances.

- | | | |
|-----|-------|---------|
| 15. | NxR | B-B4 |
| 16. | P-KN3 | N-N3 |
| 17. | P-QN4 | N/1-K2! |
| 18. | N-B7 | PxP!! |

The point! Now Black's game is
overwhelming, but technique is
still required.

- | | | |
|-----|-------|-------|
| 19. | PxB | PxP |
| 20. | KR-QN | P-K5! |
| 21. | N-K1 | ... |

21. RxP??, B-B3

- | | | |
|-----|------|------|
| 21. | ... | B-B3 |
| 22. | P-B3 | ... |

White envisions counterplay on the
K-side. However, more consistent
would be P-QR 4-5-6, etc.

- | | | |
|-----|-----|-------|
| 22. | ... | P-Q5 |
| 23. | PxP | R-QB! |

Forcing N-N5, which ties a rook to
the defense of a knight.

- | | | |
|-----|------|-----|
| 24. | N-N5 | R-Q |
|-----|------|-----|

Else N-Q6+

- | | | |
|-----|--------|------|
| 25. | N-KB3! | K-B3 |
|-----|--------|------|

BxP?? 26. N-N5+

- | | | |
|-----|-------|------|
| 26. | P-K5+ | NxP |
| 27. | NxN | KxN |
| 28. | R-K1+ | K-B3 |

28...K-Q4 29. N-B7+ any 30. NxP

- | | | |
|-----|--------|-------|
| 29. | QR-N | P-K4 |
| 30. | KR-QB1 | B-K5! |

30...P-QN3; 31. N-R7, R-QN; 32. NxB
NxN; 33. RxBP

- | | | |
|-----|------|-------|
| 31. | R-N2 | P-QN3 |
| 32. | N-B7 | ... |

With the idea 32...R-Q3; 33. N-K8+
or 32...R-QN, RxBP 32..., N-B1. Now
its easy as Pie.

- | | | |
|-----|-------|------|
| 33. | P-QR4 | R-Q2 |
| 34. | N-N5 | ... |

34. N-R6, R-R2

34. ... B-Q4

With the idea of P-B5

35. N-R3 R-R2
36. N-B4 BxN
37. RxB K-K3
38. R-R2 K-Q4
39. R-B N-Q3
40. R-QN? N-K5+

Resigns as N-B6 is deadly.

ORANGUTAN OPENING

WHITE: Mike Blechar

BLACK: Ed Scher

New York Commercial Chess League

1. P-QN4 ...

This move is actually not bad. Like 1. P-QN3, White strives to exert pressure on the long diagonal al-48, particularly if Black does not strive for P-K4 via P-Q3. If Black does play P-Q3 and P-K4, however, the move P-QN4 is stronger than P-QN3 in that after White plays P-K3 and P-Q4, we have a position similar to the Closed Sicilian with colors reversed, and as we know, the move P-QN4 is part of a q-side assault which must be played to gain counterplay. Also, the pawn on QN4 almost always goes to N5, depriving the Black QN of its best square. Compare 1. P-QN3, P-K4 2. B-N2, N-QB3 (which is OK) to 1. P-QN4, P-K4 2. B-N2, N-QB3?? 3. P-N5, N-Q5 4. P-K3, etc.

I guess what I'm trying to say is that after using this opening on and off for 15 years, I still don't know a definite way for Black to equalize, much gain an edge.

1. ... N-KB3
2. B-N2 P-KN3
3. P-QB4 B-N2
4. P-K3 O-O
5. N-KB3 P-Q3
6. P-Q4 QN-Q2
7. B-K2 P-B4

After 7...P-K4 we have a position which could have started 1. P-K4, P-K3 2. P-Q3, P-Q4 3. N-Q2, N-KB3 4. KN-B3, P-B4 5. P-KN3, B-K2 6. B-N2, P-QN4 7. O-O, B-N2 with colors reversed. White may not stand better, but I prefer his position, and I feel Black's set-up is suspect. After 7...P-B4, most games have gone 8. QPxP, PxP 9. P-N5 and White's play on the Q-side was preferable to Black's play in the center or on the K-side. I have a new plan.

8. NPxP!? PxP
9. P-Q5 ...

This position reminds one of a Benoni or Benko Gambit. However, the plan P-QN4 and B-N2 is considered good for White, but hard to achieve.

9. ... P-QR3?

The best plan is 9...P-QN4! with the idea of PxP and N-N3. I planned to play 10. QN-Q2, PxP 11. P-K4 with unclear play.

10. P-QR4 R-K1
11. O-O P-K3
12. PxP RxP
13. P-R5! ...

Taking advantage of Black's ninth. Now. Black is saddled with a backward QNP, or after P-QN3 or P-QN4 by Black, White plays PxP (e.p.) and can attack the isolated QRP. Note how one White Pawn (QRP) holds back 2 of Black's (QNP and QRP).

13. ... Q-B2
14. Q-B2 P-QN4
15. PxP e.p. RxP
16. B-B3! ...

With the idea of B-R5

16. ... B-N2!?
17. QN-Q2 ...

White will give Black counterplay if he wins the exchange. Instead, he presses his advantage.

17. ... R-K3
 18. N-N5! R-K2
 19. B-B3! ...

GANDALF'S OPEN
 GRUNFELD OPENING
 UNITED STATES CHESS FEDERATION

Eliminating Black's most dangerous piece, and defender of his QRP.

WHITE: Ron Henley 2378
 BLACK: Scott Mayer 1926

19. ... BxB
 20. N/5xB N-K1
 21. BxB NxB?!

21... KxB

22. Q-R4 N-K4
 23. Q-R5! QxQ
 24. RxQ NxN+
 25. PxN! ...

Holding K4 and giving the K and out square.

25. ... N-K3
 26. R/1-R1 N-N4?!
 27. K-N2 R-Q2
 28. N-N3 R-B2
 29. RxBP RxR
 30. NxR P-QR4
 31. R-R4! N-K3??

This makes things easy as the Rook and Pawn ending is easily won.

32. NxN PxN
 33. P-B4 K-B2
 34. K-B3 K-K2
 35. K-K4 K-Q3
 36. K-Q4 K-B3?
 37. K-K5 K-Q2
 38. P-R4 K-K2
 39. P-K4 K-Q2
 40. P-B3 R-R3
 41. K-B6 K-Q3
 42. P-K5+ K-B4

K-Q2?? 43. K-N7

43. P-R5 PxP
 44. P-B5 PxP
 45. KxP K-B3
 46. P-K6 K-Q3
 47. K-B6 P-R5
 48. P-K7 R-R1
 49. P-B5+ K-Q2
 50. RxP R-R3+
 51. K-B7 1-0

1. d4 Nf6
 2. c4 g6
 3. Nc3 d5
 4. Bf4 Bg7
 5. e3 c6
 6. Nf3 O-O
 7. h3 Ne4
 8. Bd3 Qa5
 9. O-O Nc3
 10. Qd2 dc4
 11. Bc4 b5
 12. Bb3 b4
 13. bc3 bc3
 14. Qc2 Bb7
 15. Ne5 c5
 16. Nf7 cd4
 17. Ng5 Bd5
 18. e4 Bb3
 19. Qb3 Kh8
 20. Nf7 Rf7
 21. Qf7 Nc6
 22. Qc4 Ne5
 23. Be5 Qe5
 24. Rae1 Rb8
 25. Rb1 Rd8
 26. Qd3 Qa5
 27. f4 Rc8
 28. e5 Qa4
 29. Rf2 e6
 30. Rd1 Bf8
 31. Rc2 Qc4
 32. Qc4 Rc4
 33. Kf1 Bc5
 34. Ke2 Rb4
 35. Kd3 Kg7
 36. Re1 a5
 37. g3 a4
 38. a3 Rb3
 39. Re4 Kf7
 40. Rd4 Bd4
 41. Kd4 Ra3
 42. Rc3 Rc3!
 43. Kc3 g5!
 44. fg Kg6
 45. h4 Kf5
 46. Kb4 Ke5
 47. Ka4 Kd4?? Ke4=
 48. h5 Ke5
 49. g4

1-0

ALLSBROOK WINS FIRST AT THE DIXIE!

BY ROBERT BRADLEY ANDERSON INDEPENDENT SPORTSWRITER (ARTICLES WERE EXCERPTED FROM ACTUAL NEWS REPORTS)

CLEMSON - Former South Carolina State Champion Fred Allsbrook took top honors in the Dixie Chess Classic here with a perfect 5-0 score. Allsbrook defeated current State Chapion Paul Tinkler plus his two main rivals in the tourney, Charleston Chess Club Champion Patrick Hart and former S.C. junior champion David Hutchins, in their individual encounters. Here is the key game from the event.

Sicilian Defense
Dragon Variation

ALLSBROOK- 2100	HART - 1809	Round 3	*****
1. e4 c5			*
2. Nf3 d6			*
3. d4 cd			*
4. N:d4 Nf6			*
5. Nc3 g6			*
6. f3 Bg7			*
7. Be3 0-0			*
8. Qd2 Nc6			*
9. Bc4 Bd7			*
10. h4 Qa5			*
11. 0-0-0 Rfc8			*
12. Bb3 Ne5			*
13. g4 Nc4			*
14. B:c4 R:c4			*
15. h5 Rac8			*
16. hg fg			*
17. Ng3 Qc7			*
18. e5 Ne8			*
19. Qh2 B:e5			*
20. Q:h7 ch Kf8			*
21. Q:g6 R:c3			*
22. bc Q:c3			*
23. Bd4 B:d4			*
24. R:d4 Qe3ch			*
25. Kb1 Qe5			*
26. Rf4ch !! 1-0 !			*
*****			*

THREE TIE FOR FIRST AT CHESS EVENT

CLEMSON - The first of the Clemson Chess Club's weekly club tournaments was completed Saturday, and Jimmie Blackmon, Tom Thorpe, and Thomas Allen all tied for first at the Jan. 14th tournament. Blackmon of Atlanta Ga., Thorpe of Greenville, and Allen of Seneca had two wins and one loss a piece in the first of the weekly tourneys. The three-way tie came about as a result of a third round upset of Blackmon, (USCF rated 1,590) by Allen, a 1221 player.

PARKER WINS CHESS MEET

CLEMSON - WAYNE PARKER of Spartanburg scored a perfect 3-0 score enroute to winning the January 21st chess tournament sponsored by the Clemson Chess Club. Tom Thorpe (1298), a Greenville participant, took 2nd place in the 8 man field. Parker had a USCF rating of 1434.

ALLSBROOK WINS AGAIN !

CLEMSON - Fred Allsbrook claimed first place in the Jan 28th weekly Clemson Chess Club tournament, while in a lower section, a 4 way tie for first occurred!! This happened during a record 13 player turnout for a weekly club tournament at Clemson.

In the top section, Allsbrook defeated 2 'A' players, plus Spearman, a strong unrated playing in his first chess event who finished with an estimated rating of 1535 after 3 games.

In the second section, Ted Palmer (1430) from Clemson, Maurice Mooney (1350) from Brevard NC, and Jerry Itin (1305) PLUS Thomas Allen (1221) both from Seneca, all tied for first with 2 wins and one loss each. Once again, as in Clemquads #1, it was Allen who brought about the logjam as he stopped top-rated Ted Palmer in the final round from sweeping 3-0.

AN EDITORIAL FROM THE PRESIDENT OF THE FLORIDA CHESS ASSOCIATION
TO FLORIDA CHESS PLAYERS

What an opportunity to write an editorial: The flight to Chicago was delayed by weather and we arrived one minute too late to make our connection. We now have three hours to sit and look out of the airport window. Unfortunately, this is not an optimum arrangement for serious composing. We prefer our library den at home with our desk heaped high with potential chess editorial items and an assortment of cheese, home-made bread and coffee. All we have here with us for inspiration is one folder of recent letters of complaint.

You, members of the Florida Chess Association are receiving this editorial in the publication "The Chessman", originally the lone publication of the Georgia Chess Association and now the trial publication merger with the Florida Chess Association and the South Carolina Chess Association - the whole perhaps to be called "The Chessman" publication of the Southeast Chess Society.

It has become apparent to your President and many of our informed members of the Florida Chess Association that in the last few years, a gradual decline has occurred in the ranks and organization; some caused by non-communication, some caused by dissatisfaction, some by lack of activities and so on. Be that as it may, your President was appalled (and that is the right word) when he perceived that this deterioration was still continuing. A sure sign of this is the continued tournaments that are being run which are not supporting the FCA. Some of these tournaments are in the strong chess playing areas which in the past years were wisely run by conscientious organizers. I feel we have reached a low ebb but the tide is turning and something new has at this time appeared on the horizon.

A few weeks ago, I received a copy of "The Chessman", the official publication of the Georgia Chess Association, along with a letter from Mr. Earl E. Morrison, President of the GCA. He informed me that there has been a great deal of thought on organizing a cohesive "Southeastern Chess Society." South Carolina and Georgia are apparently already merged in this venture and are already jointly contributing to the publication called "The Chessman". Mr. Morrison kindly told me to think it over. I have contacted several of our well known FCA organizers and players, among them Mr. Henry Buckman IV, Mr. Larry Storch, Mr. Charles Lang and others, asking their opinion. They all seemed enthusiastic about this sort of publication for the Florida Chess Association.

We are giving it a trial; the items in this, our first issue were gathered in great haste to make a deadline. It is small but it will get better in the future. "The Chessman" will be published every two months. The FCA could elect to receive four or six issues a year. The cost is nominal; 50 cents an issue delivered, or \$2.00 a year for four, \$3.00 a year for six issues. These would come out of and be paid from our yearly dues. We can expect possibly three issues by our annual business meeting in September 1978. At that time, I would ask for a vote of approval from our Board of Directors and members and could continue the same arrangement. I, myself, am all for it after having examined many aspects. It would, for instance, by a universal clearing house for future events. It would also lend itself to a tri-state "super" tournament, perhaps once a year. It would in no way interfere with other aspects of the Florida Chess Association. Everyone is invited to participate and contribute material for this

publication. I believe a new interest in the FCA would take place and those members and clubs who now believe themselves living on a self-sustaining "Chess Desert Island", forever immune from the overall chess world, will change their minds. In turn, we in the FCA can support more activities such as youth tournaments, better general tournaments, and help the growth and support of the United States Chess Federation.

One of the immediate benefits to be derived from a bi-monthly publication such as "The Chessman", is that we here in Florida would again be able to list many months in advance the "Calendar of Chess Activities", results in tournaments and news items. This will end the frustration formerly felt with no current issues being published or available. Future chess activities and planning could be easily made. This is exactly what we who play chess and participate want; i.e., chess tournaments and activities.

But there is yet another reason for having a bi-monthly publication such as "The Chessman" and that is one of economics. We simply cannot put out a comparable work. In the past few years the economics of publishing a chess journal in Florida has eroded any treasury we had. It also eroded our membership and rubbed almost everyone the wrong way.

Inasmuch as we do not have an abundance of submitted manuscripts, games, announcements or future topics at this time for insertion in this our first cooperative publication, please bear with us. We can grow and get better. I hope some of you make a serious effort to send to me or Larry Storch, games, tournament results, or news items for future publication. We will try to work out the details of getting them into a Florida Section of "The Chessman".

I also believe you will be pleased at this turn of events and hopes for the future. We do need support for the Florida Chess Association for those unbelievers who have turned away. In one or two issues from now, we can be getting a great deal of material into this publication. Tournaments will be advertised free of charge for the Florida Chess Association.

In my next editorial from the President of the FCA, I will tell you of some of the work being done by Mr. Henry Buckman III and Mr. Charles Musgrove. They are working mainly on a reform and update for the FCA constitution. Our corporate structure has fallen into disrepair, we must mend our fences.

Since we must write this column some weeks or months before it appears, we may be editorially out of phase with the chess calendar. If we had wanted to wish our members a Happy New Year, for example, we should have thought about it in September or October. But, of course, we did not; but speaking for the future, which is difficult to do, I feel this new venture will be successful if everyone cooperates. It only takes a membership in the Florida Chess Association and some efforts in publications and tournaments for continued results. We invite everyone to submit publication material for consideration. And you chess players who have dropped your memberships or tournament requirements, do not live on that desert island; make it a requirement to belong to the FCA.

This new arrangement is an experiment; if it works and it should, we shall all benefit and chess organization will grow. It is up to you, Florida players. Thank you, Mr. J. Earle Morrison. We wish this new venture a success.

EGON R. H. TEODORSON, President
Florida Chess Association

WELCOME

On behalf of the Southern and Georgia Chess Associations, I would like to welcome our new Florida members, our other new members and readers of all types.

A prime purpose of The Chessman is to break down the political parochialism that has crept into the American Chess movement. The essence of Chess is that it is an international language. The Florida-Georgia State line does nothing for southeastern chess. If the Florida players will participate in and contribute to The Chessman we can erase that state line and become one society and we will, in the process, rebuild Florida Chess.

J. Earle Morrison
President of Georgia Chess Association
President of Southern Chess Association

LETTERS TO THE EDITOR

Dear Mr. Morrison,

Congratulations and thanks for getting the FCA and GCA merged. It should be a great partnership.

Mark Solomon

The congratulations and thanks should go to at least Mark Solomon, Henry Buckman III, Bill Dodgen, L. Thad Rogers, and Egon Teodorson.

J. Earle Morrison

OFFICIAL RESULTS OF THE SCCA ELECTION

PRESIDENT	DODGEN -	28
	TAFFINDER -	7
VICE PRESIDENT	MAHAFFEY -	35
SECRETARY	BRAUN -	35
TREASURER	KELLEY -	35

On the ballot for method of selection of USCF delegates and alternates.

FIRST CHOICE

PROPOSAL A - 4
PROPOSAL B - 14
PROPOSAL C - 14
NO PREFERENCE - 3

TOTAL - 35

SECOND CHOICE

PROPOSAL A - 17
PROPOSAL B - 7
PROPOSAL C - 4
NO SECOND CHOICE - 7

TOTAL - 35

BASED ON THIS, PROPOSAL B IS ADOPTED.

CHARLES E. BRAUN
SCCA SECRETARY

Dear Earle:

We have received only favourable comments from our membership since the inclusion of the S.C.C.A. News in Chessman. I am pleased that the Florida Chess Association has now joined with us, and have hopes that other nearby states may soon follow. Personnaly, I view our association with Chessman and the birth of the Georgia-South Carolina Open as two of the major accomplishments made by the SCCA in the past few years.

See you in April in Augusta.

Best regards,

Bill Dodgen

I would like to express my thanks to the SCCA membership for re-electing me to the office of President. I will do my best to continue to seek ways to upgrade our Association.

Your assistance during the coming year is needed and requested. To start with, we need people to serve on various committees. Please notify me if you are willing to be of service.....W.H. Dodgen

-
1. The S.C.C.A. still seeks bids for the S.C. Junior Championship (Spring) and the S.C. Closed Championship (November). Please send bids to S.C.C.A. President.
 2. As Chessman is published every 2 months, send tournament announcements, cross-tables (we recommend last name first and in order of finish), articles, news items and the like to Stan Vaughan on a frequent basis. Send unannotated games to Chuck Braun. THIS IS A MUST FOR GOOD COVERAGE!

UNDERSTANDING THE CHESSMAN

The Chessman is the only combined publication that I am familiar with, the significance of which is that the opinions expressed are those of the signitory ONLY. Secondly, out of necessity, the Chessman has a complicated editorial system, S.C. and Fla. members should send material to their editor, G.C.A. members should send material to the G.C.A. President. Occasionally, we have guest writers (non-members) they may submit material to any of the states. The cutoff date is the eighth day of even numbered months. We mail on the twenty fifth.

We, the editors need more material. Remember, the Chessman is a reflection of our dedication and we want the rest of the nation to know we mean business.

J. E. Morrison

SCCA OFFICERS

President: William Dogen - 2008 Robin Road - North Augusta, S.C. 29841 Ph: (803) 279-6881

Vice President: Marion Mahaffey - 1207 Memorial Pk Rd. - Lancaster S.C. 29720
Ph: (803) 283-2312

Secretary: Charles Braun - 7 Winthrop Dr. - Aiken, S.C. 29801 Ph: (803) 648-5446

Treasurer: Harold Kelley - 811 Rhododendron Pl SE - Aiken, S.C. 29801
Ph: (803) 648-0130

Editor: Stan Vaughan - 114 Hazelwood Dr. - Clemson S.C. 29631 Ph: (803) 654-5651

Tournament Clearinghouse: Stan Vaughan - Box 2548 Univ. Sta. - Clemson, S.C.
Ph: (803) 654-5651

Send membership dues to Charles Braun, New Items to Stan Vaughan, address changes to Charles Braun.

GCA OFFICERS

President: J. Earle Morrison 2672 Moss Lane, Marietta, Ga. 30067
Ph: (404) 952-8259

Vice President: Stan Sherman 1991 De Lowe Dr. Apt U6 SW - Atlanta, Ga. 30311
Ph: (404) 753-7393

Secretary: James P. Pressley 2296 Wakita Dr SE - Marietta, Ga. 30060
Ph: (404) 436-1217

Treasurer: Steve Hung 4153 Wesley Club Dr. Decatur, Ga. 30034
Ph: (404) 284-6528

Editor: Bill Noyes - 777 Briarcliff Rd. NE - Atlanta, Ga. 30311

Publisher: Ken Seagle - 66 E Wesley Rd. NE - Atlanta, Ga. 30329

Publicity Director: John Doyle - 1431 F Druid Valley Dr. - Atlanta, Ga. 30329

Tournament Org: L. Thad Rogers - 3055 General Lee Rd. - Macon, Ga. 31204

Junior Officer: Mark Coles - 3392 Canary Lake Dr. - Duluth, Ga. 30136

Membership Director: Tom Fallis - PO Box 76242 - Sandy Springs, Ga. 30328
SEND MEMBERSHIP DUES, ADDR. CHANGES, TO FALLIS

LIST OF OFFICERS & DIRECTORS OF FLORIDA CHESS ASSOCIATION

President: Mr. Egon Teodorson - 775 Malibu Lane - Indialantic, Fl. 32903
Ph: (305) 773-3215

Vice President: Mr. Robert Katz - 315 7th Ct., Apt. #2 - Lake Park, Fl. 33403

Secretary & Treasurer: Mrs. Flora Cantrell - 4040 67th Avenue N - Pinellas Park, Fl.
33565 Ph: (813) 527-6010

Memb. Secretary & FCA Director: Mr. Gilbert Cantrell - 4040 67th Avenue N - Pinellas Park, Fl.
33565 Ph: (813) 527-6010

Tourn. Coordinator & FCA Director: Mr. Larry Storch - 5999 Curry Ford Rd. #112 - Orlando, Fl.
32807 Ph: (305) 273-4982
Fla. Clearinghouse & Newsletter Editor

FCA Director: Mr. Douglas Carpenter - 2883 Post St. #3 - Jacksonville, Fl. 32205
Ph: (904) 389-7989

FCA Director: Mr. Alfonso Ruiz - 221 N.E. 48 Terr - Miami, Fl. 33137
Ph: (305) 757-8948

FCA Director: Mr. Michael Regan - 3314 Shamrock Rd. - Tampa, Fl. 33609
Ph: (813) 839-2642

USCF Reg Vice President: Mr. Henry Buckman III - 2043 Northeast 29th St. - Fort Lauderdale,
Fl. 33306 Ph: (305) 563-0638

Legal Counsel: Mr. Charles Musgrove - 2025 Ermine Dr. - Tallahassee, Fl. 32303
Ph: (904) 878-2682

...GEORGIA HIGH SCHOOL CHAMPIONSHIP...

The Southeast has been blessed by many talented and knowledgeable high school players including the nationally prominent Randy Kolvick of Warner Robbins (see CL&R Yearbook, 1977, pg 8), who has won or placed high in one open event after another in prodigy style, Florida's Bill Killpatrick, Atlanta's Robert Butler, who has tutored a major group of Atlanta players, and a whole family of Jurjevichs from Mobile. However, in championship play, it has been Justin Morrison with the fighting spirit, will, pride, and stamina characteristic of a champion. Justin Morrison has proved himself to be the strongest player in Georgia high school history by winning his third Georgia High School Championship, the difficulty of this being brought into focus when one considers the chances of winning any major tournament three times out of four.

Championship players are combination players who use the long time controls of major tournaments to make their endless calculations. They also rely as much on inspiration as they do on knowledge, so starting way back in the pack is no handicap. Starting in 17th place, Justin tied for second in the 1976 Georgia State Championship. Justin won the 1976 Southern High School Championship 6 - 0 and went on to win Top B in the National High School Championship in Cleveland the same year.

Now the Southern High School Championship is upon us again and this year's event promises to be bigger and stronger than ever. And, while Justin will not be the top-seeded player entering the tournament, one can feel that, in the late rounds, he will once again be in contention for the title of Southern High School Champion.

CHES CAMP

By now most readers of C L & R have heard about the chess camp at Michigan State University with Bill Lombardy IGM on the staff. The camp will have large classes - probably 20 in a group and while it sounds like a great way to spend a week, we may have a better idea. Steve Schneider is planning to have an Atlanta Kings chess camp here in Atlanta to be taught by members of the Atlanta Kings. Part of the money raised would be used to insure an Atlanta Kings team again next year. It would probably be held in June and cost \$100 per person not including room and board (if needed). It would be held in a location offering sports in addition to chess. The classes would be smaller and while the plans are not to have an IGM on the staff, each group would have a leader at least 300 rating points above the students. Steve has talked to John Collins who taught not only Lombardy but also Bobby Fischer and he has agreed to come down or to get Lombardy to come down here, if there is sufficient interest from higher rated players. If you would like to teach or attend such a camp, please send a card right away to Steve Schneider, 3135 Buford Highway, Apt. #1, Atlanta, Georgia 30329.

CHES PRODIGIES TO COME SOUTH?

John Collins, the man who taught chess champion Bobby Fisher, and many other top American masters, recently took 16 of his current students from the New York are to play the West Point Academy. The budding chess champs ranging in age from 7 to 15 years bested the Army Cadets. In February they will go to New Jersey for the U. S. Team tournament. Mr. Collins said he would like to bring his kids south this spring on a short tour to play against high schools, colleges or other chess groups. If you would like to have this group come to your city, please write for more details to Steve Schneider, 3135 Buford Hwy., Apt. #1, Atlanta, Georgia 30329. This should be an excellent device for getting local chess publicity both in the newspaper and on T.V.

TOP 20

The chessman as the official publication of the Florida, Georgia and South Carolina Chess Associations is planning to carry a top 20 list similar to that in C L & R. It is planned to have 4 lists: a top 20, top 20 under 21, top 20 under 16 and top 20 under 13. These lists will only be printed if we receive cards from players indicating their interest. We must have full name, state of USCF membership, USCF membership number, date of birth and current rating. To be eligible for a list you must play in at least one rated tournament in our tri-state area each year in which you defeat at least one opponent within 300 points of your rating, notify us of this annually and be a member of one of the three chess associations (Fla., Ga., or S.C.). It is possible that we could change this list somewhat to list top college students, top high school (grades 10-12), top junior high (grades 1-9), top elementary (grades 1-6). We could also list the top 10 or top 40 instead. We would like to hear from you the readers. Send names/state, USCF ID #, current rating and date of birth if applicable to Steve Schneider, 3135 Buford Hwy, Apt. #1, Atlanta, Georgia 30329.

POSTAL CHESS : ONE POINT OF VIEW

by John McCrary

To someone who does not play it, postal chess may seem like a strange pastime. A postalite will spend months on a single game, when he could play dozens of serious games during that time at the local club. He will sometimes spend more time on a single position than would be required for a whole tournament game (or even two or three games) in over-the-board play.

In spite of this, there are many players (including this author) who much prefer postal chess to over-the-board play. What, then, is the appeal of postal chess? Why do some players prefer this very slow form of chess to the regular face-to-face game?

One important reason is that postal chess is a relative equalizer of playing abilities. The "underdog" can often put up a better fight against the favorite in a postal game than in an over-the-board game. One reason for this is that postal chess players are allowed to consult books on openings. Thus, the player who has spent a great deal of time memorizing variations has little advantage at postal chess when his less learned opponent can just look up what is needed. Likewise, postalites are allowed to move the pieces around while analyzing. Thus, the ability to visualize accurately, so important in regular chess, is less important in postal play. Since both skill in visualizing and knowledge of opening theory are correlated with playing experience, then it follows that the gap between experienced and inexperienced players is somewhat reduced in postal play.

Another advantage of postal chess is that it allows a player to delve much more deeply into the possibilities of a position, with a consequent increase in the objective quality of his play. This often means a duffer can work out deep, complex combinations that would never occur to him in an over-the-board encounter. This increased depth of analysis is especially evident in endgame play, where virtually endless analysis can occur. Also, blunders are less likely to happen in postal chess, to mar the aesthetic value of a game.

Because of the long time-limit per move (72 hours in USCF play), postal chess is often a pure struggle of wills. The victor may be the one who has enough determination-to-win to spend hours on a position if it is required. In a present game of mine, I recently spent about eight hours total on a single position. I did not discover until about the seven and one-half hour mark that one of the moves I was contemplating would lose!

Of course, postal chess is not for everyone. The daring player who likes speculative moves will often do poorly, because if a refutation, however obscure, exists for his move, his postal opponent has plenty of time to find it. Likewise, the bookish player may not appreciate losing his advantage in the opening. But for those who have never tried postal, my advice is "Try it...you'll LIKE it (maybe) !"

FROM CHARLESTON- KEVIN FLEMMING WON THE TOP SECTION OF THE CHRISTMAS CASH QUAD HELD AT THE CHARLESTON POST-COURIER BUILDING DECEMBER 10TH. KEVIN HAS A SCHORE OF $2\frac{1}{2}-\frac{1}{2}$. IN THE BOTTOM SECTION, GALE NICOLET TOOK FIRST BY VIRTUE OF HIS SCORE OF $2\frac{1}{2}-\frac{1}{2}$ ALSO. THE TD'D WERE ERNIE AND JOAN SCHLICH.

WHERE TO PLAY CHESS IN SC

CLEMSON- CLEMSON C.C. SATURDAYS HOLTZENDORFF YMCA (ALL DAY)
GREENVILLE G'VILLE C.C. WED. 7:30-11:30 PM BOBBY PIERCE COMM CNTR, TOWNES ST
LANCASTER LANCASTER CC THURS 7-11 PM STARR HALL USC-LANCASTER
N. AUGUSTA- AUG N. AUG CC WED 7:30 PM N. AUG REC CENTER
CHARLESTON CHAS. CC WED 7 PM - 10 PM POST COURIER BLDG 6296 RIVERS AVE
COLUMBIA- PALMETTO CC THURS 7 PM BLUE CROSS/BLUE SHIELD BLDG ALPINE RD AT I-20

STILL NEED CURRENT INFO PLEASE ON SPARTANBURG CC, ROCK HILL CC, FLORENCE CC
CAMDEN CC & OTHERS WE MAY NOT KNOW OF.

WHERE TO PLAY CHESS IN GEORGIA

ADEL: Cook County Chess Club, Cook High School, Adel, Thur. 305.
ALBANY: Albany Chess Club, NW Branch-Albany Library, Albany
ATHENS: Athens Chess Club, Dudley Park, Athens, Thur., 8P.M.
Univ. of Georgia C.C., Chemistry Bldg. Rm.1505, Wed.7:30 P.M.*
ATLANTA: Wed. Briarcliff High School, 3:10 to 7:30 P.M.
Thurs. Northeast C.C., St. Michaels Church, 3323 Chestnut Dr., 7:00 P.M.
Thurs. Decatur CC. Church of the Epiphany, 2089 Ponce de Leon, Parish Hl. 7:30
Fri. Atlanta CC, Luckie St., YMCA, 7:30 P.M.
Sat. Emory Univ. CC. Rm 211, Student Union, 12:30*
Sat. Eastside CC. The Meeting Place, 2564 Gresham Rd. Decatur, 3-8 P.M.
AUGUSTA: Aug.-N. Aug. CC. N. Aug. Rec. Center, Wed. 7:30
DALTON: Dalton CC - contact Willard Strain (1508 Dug Cap Rd.)
MACON: Macon CC, Robert Train Bldg., Oglethorpe Blvd., Wed. 7:00
MARIETTA: Cobb Co. CC, Cobb Civic Center, Clay E. Fairgrounds St. -Thurs 7:30
ROME: Rome CC. Rome Rec., Center, 300 W. 3rd st. Friday nights.
SAVANNAH: Armstrong College CC, Gamble Hall, Friday, 12:30*
Savannah CC, Daffin Park Activities Bldg., Ph - for info. 355-3979, Mon. 7:00
STATESBORO: Statesboro and Ga. Souther Ctr. Mon. & Fri. 7:00*
THOMASTON: Thomaston CC, Civic Center, Tues. 7:30
VALDOSTA: Valdosta CC, Tall Tree Apts. Rec. Ctr., 220 Connel Rd., Tues 7:30
NOTE: BRING SETS AND BOARDS TO CHESS CLUBS * Many College Chess Clubs meet only
during the school year. SEND NEW LISTINGS, ETC., TO G.C.A. EDITOR.


279 ROSWELL
427-5426

6TH TAMPA BAY OPEN
OPEN
TAMPA, FL. 33609

ID	PLAYER	ST	RING	1	2	3	4	5	TOT
1032427	1 SMITH, DANIEL K	FL	1566	W21	W16	W-7	W12	D-3	4.5
1041167	2 BUEL, ERIC M	FL	1700	L-8	W14	W18	W13	W-6	4.0
0234522	3 PETSCH, FRANCIS D	FL	1602	W20	W-6	W13	D-7	D-1	4.0
0312914	4 TRAPP, RICHARD G	FL	1638	D11	L-9	W20	W18	W-5	3.5
0233569	5 CHANDLER, DAVID M	FL	1721	D-9	W10	H--	W-8	L-4	3.0
1245871	6 BENITEZ, MANUEL	FL	1710/19	W19	L-3	W15	W10	L-2	3.0
0234085	7 RAND, JR VERN C	FL	1656	W14	W-8	L-1	D-3	D-9	3.0
0233887	8 CROOK, CHARLES S	FL	1557	W-2	L-7	W16	L-5	W15	3.0
1208738	9 STIERE, TOM G	FL	1472	D-5	W-4	L12	W11	D-7	3.0
0066824	10 ABARNO, FRANK	FL	1363	B--	L-5	W17	L-6	W13	3.0
1160069	11 MAC DONALD, ROSS	FL	1427	D-4	L12	W19	L-9	W--	2.5
0352088	12 KREIGH, KYLE R	FL	1915	L13	W11	W-9	L-1	---	2.0
0278589	13 DICKOVER, JOHN N	FL	1659	W12	W17	L-3	L-2	L10	2.0
0226040	14 JOB, CURT	FL	1430	L-7	L-2	B--	L-15	W19	2.0
1220797	15 FERNANDEZ, IVAN	FL	1275/6	L17	W19	L-6	W14	L-8	2.0
0224101	16 CHAPLA, MICHAEL E	FL	1786	W18	L-1	L-8	---	---	1.0
1037836	17 ATCHLEY, JEFFREY L	FL	1534	W15	L13	L10	---	---	1.0
0235405	18 BALTAR, FRANK	FL	1512	L16	W20	L-2	L-4	L--	1.0
1151507	19 PERSANTE, ROBERT	NY	1500	L-6	L15	L11	W20	L14	1.0
1019676	20 BELL, BRETFORD W	FL	1347/13	L-3	L18	L-4	L19	B--	1.0
0234158	21 BARTON, H PAUL	FL	1442	L-1	---	---	---	---	0.0

6TH TAMPA BAY OPEN
NOVICE
TAMPA, FL 33609

ID	PLAYER	ST	RING	1	2	3	4	5	TOT
0233798	1 CRUZ, JUAN T	FL	1386	W18	W22	W17	D-3	W-4	4.5
1040969	2 JENNINGS, NICK	NY	1304	L-3	W-9	W18	W13	W-8	4.0
9763908	3 PLIEGO, JOSEPH R	FL	1100/5	W-2	W21	W16	D-1	D-5	4.0
0233712	4 PALMS, ROBERT C	FL	1383	W11	D-5	W12	W--	L-1	3.5
1128220	5 SMART, KARL	FL	1377	W23	D-4	D15	W16	D-3	3.5
1285501	6 MOCTEZUMA, JOHN	FL	1331/10	W13	L16	D14	W19	W11	3.5
1163084	7 BARKIN, THOMAS I	FL	1328	L14	W20	W21	H--	W15	3.5
0235138	8 PALEVEDA, THOMAS	FL	1313	W10	L17	W19	W14	L-2	3.0
1251951	9 AMBROSIO, ALEXANDE	FL	1252/11	L17	L-2	W25	W22	W16	3.0
1244076	10 SJOLUND, SCOTT	FL	873/6	L-8	L19	B--	W24	W18	3.0
1320368	11 STONE, SCOTT T	FL	0	L-4	W23	W22	W17	L-6	3.0
0235154	12 PALMER, RICHY W	FL	1233	D15	W24	L-4	D21	D13	2.5
1295827	13 STEARNS, JOHN	FL	856/5	L-6	B--	W24	L-2	D12	2.5
1213821	14 TENE, ALAN D	FL	0	W-7	L15	D-6	L-8	W21	2.5
1124330	15 HART, STEPHAN D	FL	1395	D12	W14	D-5	L--	L-7	2.0
0235570	16 GOODMAN, ADOLPH W	FL	1360	W19	W-6	L-3	L-5	L-9	2.0
0233551	17 ABEL, HOMER L	FL	1355	W-9	W-8	L-1	L11	---	2.0
1206310	18 GRASSO, ROBERT J	FL	1295/5	L-1	W25	L-2	W20	L10	2.0
1117988	19 GIBSON, RANDAL C	FL	1215/20	L16	W10	L-8	L-6	W22	2.0
1179566	20 GORRIS, JOHN	FL	1163	L21	L-7	W23	L18	W24	2.0
1193994	21 WHIDDEN, DENNIS	FL	1354/24	W20	L-3	L-7	D12	L14	1.5
1-19668	22 RIENS, PHILLIP	FL	1321	W25	L-1	L11	L-9	L19	1.0
0251494	23 ROZEMAN, E H	FL	1132	L-5	L11	L20	W--	---	1.0
1311270	24 BUCK, ROBERT A.	FL	0	H--	L12	L13	L10	L20	0.5
0235502	25 PINKARD, ERIC C	FL	1120	L22	L18	L-9	L--	---	0.0

ORLANDO OPEN
ORLANDO, FL 32810
12-16-77

ID	PLAYER	ST	RING	1	2	3	4	5	TOT
10227062	1 RYAN, MARK R	FL	1997	W14	W-6	D-2	W-3	D-4	4.0
10222788	2 TEW, DAVID E	FL	1961	W-9	W-7	D-1	D-4	W-6	4.0
10235120	3 PALEVEDA, NICHOLAS	FL	2061	W12	W10	D-4	L-1	W11	3.5
10227038	4 PETERSEN, MIKE G	FL	1909	W20	W-5	D-3	D-2	D-1	3.5
10222486	5 FRINK, BRUCE R	FL	1906	W21	L-4	D12	W-7	W13	3.5
10299471	6 VAN CAMP, WAYNE W	MI	1938	W16	L-1	W19	W13	L-2	3.0
10226571	7 PEEPLES, ROGER E	FL	1908	W15	L-2	W14	L-5	W16	3.0
10227208	8 STORCH, LAWRENCE A	FL	1903	D18	W17	L13	W12	D-9	3.0
10226678	9 ARDAMAN, MILES F	FL	1682	L-2	D15	W17	W10	D-8	3.0
0196531	10 VAN DER HEYDEN, KE	FL	1884	W19	L-3	D18	L-9	W14	2.5
10227402	11 LAWSON, THOMAS	FL	1854	D17	L13	W15	W18	L-3	2.5
11041167	12 BUEL, ERIC M	FL	1765	L-3	W20	D-5	L-8	W18	2.5
10226023	13 ALITIN, MD E ROGER	FL	1592	H--	W11	W-8	L-6	L-5	2.5
10226171	14 HALLMAN, DONALD A	FL	1733	L-1	W16	L-7	W19	L10	2.0
1183476	15 SCARCI, FRANK P	FL	1632	L-7	D-9	L11	D20	W19	2.0
10212448	16 CHANG, KWEI K	FL	1591	L-6	L14	W20	W17	L-7	2.0
11271120	17 MILLER, JR JOHN M	FL	1809/5	D11	L-8	L-9	L16	B--	1.5
11032427	18 SMITH, DANIEL K	FL	1705	D-8	H--	D10	L11	L12	1.5
10226708	19 COHEN, PETER J	FL	1329	L10	B--	L-6	L14	L15	1.0
10233569	20 CHANDLER, DAVID M	FL	1721	L-4	L12	L16	D15	---	0.5
10226198	21 SOLOMON, ERIC	FL	1646	L-5	---	---	---	---	0.0

END OF YEAR OPEN
CAMDEN, S.C.

SECTION A

ALLSBROOK, F.S.	- 2 1/2-1/2
FERGUSON, R.G.	- 2-1
HUTCHINS, D.Q.	- 2-1
MAHAFFEY, M.E.	- 1 1/2-1 1/2
CHAPPELL, M.S.	- 1 1/2-1 1/2
MOSS, C.D.	- 1-2
SIMPSON, K.T.	- 0-3

SECTION C

EVANS, R.	- 3-0
HOLMES, D.R.	- 3-0
HARRELSON, D.	- 2-1
YELVERTON, J.A.	- 2-1
KEED, B.	- 2-1
HAMMETT, B.E.	- 1 1/2-1 1/2
BALSBERG, D.A.	- 1 1/2-1 1/2
MORGAN, J.	- 1-2
RAY, R.A.	- 1-2
BLAND, W.R.	- 1-2
O'CONNOR, J.	- 1-2
WESTER, P.D.	- 1/2-1/2
HOUK, M.C.	- 1/2-1/2
KEMMERLIN, G.W.	- 1/2-1/2

SECTION B

MOODY, H.Q.	- 2 1/2-1/2
GILLER, F.G.	- 2-1
GADOURY, D.W.	- 2-1
BROWN, J.A.	- 2-1
CARRIGER, P.M.	- 1 1/2-1 1/2
LEWIS, LEROY E.	- 1 1/2-1 1/2
HUBBARD, J.D.	- 1/2-1/2
THORPE, T.E.	- 0-3

GANDALF'S OPEN
OCTOBER 29, 30, 31
ORLANDO, FLA.
LARRY STORCH - T.D.

ID	PLAYER	ST	RING	1	2	3	4	5	TOT
10393701	1 HENLEY, RONALD	FL	2378	W10	D4	W9	W3	W2	4 1/2-1/2
10227178	2 MAYER, SCOTT	FL	1905	W18	W5	D7	W8	L1	3 1/2-1 1/2
11056521	3 BUSQUETS, LUIS	FL	2146	W11	D9	W8	L1	W4	3 1/2-1 1/2
10227062	4 RYAN, MARK	FL	1949	W21	D1	W19	W7	L3	3 1/2-1 1/2
10529191	5 ACOSTA, MARIANO	FL	2095	W15	L2	W12	D6	W13	3 1/2-1 1/2
10222851	6 NARDANDREA, JOHN	FL	2087	W14	L8	W15	D5	W10	3 1/2-1 1/2
10228972	7 SMALL, GREGG	FL	1980	W17	W22	D2	L4	W11	3 1/2-1 1/2
10226571	8 PEEPLES, ROGER	FL	1896	W24	W6	L3	L2	W15	3-2
10227038	9 ARDAMAN, MILES	FL	1922	W20	D3	L1	D13	W17	3-2
10227496	10 TEODORSON, EGON	FL	1743	L1	D17	W16	W14	L6	2 1/2-2 1/2
10426171	11 HALLMAN, DONALD	FL	1708	L3	D20	W24	W12	L7	2 1/2-2 1/2
11163246	12 SALZ, BRADLEY	Unr.	D19	W16	L5	L11	W21	---	2 1/2-2 1/2
10226201	13 SOLOMON, MARK	FL	1774	L16	W21	W22	D9	L5	2 1/2-2 1/2
11285198	14 COX, DENNIS	FL	1585/816	D24	W20	L10	W16	---	2 1/2-2 1/2
10226678	15 ARDAMAN, MILES	FL	1707	L3	W18	L6	W22	L9	2-1
11199061	16 LENNOX, FRANK T.	Unr.	W13	L12	L10	W18	L14	L-3	---
11183476	17 SCARCI, FRANK	FL	1577	L7	D10	W25	D19	L8	2-3
10227054	18 PAYNE, JAMES	FL	1471	D12	L15	W21	L16	W22	2-3
10227879	19 LANG, CHARLES	FL	1743	D12	W25	L6	D17	---	WD - 2-2
10234488	20 CANTRELL, GILBERT	FL	1475	L9	D11	L14	L23	W24	1 1/2-3 1/2
10152844	21 FAUST, EDWIN M.	FL	1550	L4	L13	L18	W24	L12	1-4
10226408	22 COHEN, PETER	FL	1344	Bye	L7	L13	L15	L18	1-4
11166172	23 GATNOR, PAUL	FL	1483	---	---	---	W20	---	1-0
10066824	24 ABARNO, FRANK	FL	1430	L8	D14	L11	L21	L20	1/2-1 1/2
10227101	25 ALITIN, E. ROGER	FL	1843	Bye	L19	L17	WD	---	1/2-2 1/2

TAMPA BAY SCHOLASTICS
HS AND PRE HS SEC
TAMPA, FL 33609
11-19-77

ID	PLAYER	ST	RING	1	2	3	4	5	TOT
11333699	1 CHRISTOFFIDES, HARI	FL	0	W-3	W11	W-4	D-2	W-7	4.5
10234239	2 TOBERGTE, JEFF	FL	1688	W11	W-7	W-6	D-1	D-5	4.0
10235138	3 PALEVEDA, THOMAS	FL	1315	L-1	W14	W10	W-8	W-9	4.0
11163084	4 BARKIN, THOMAS I	FL	1358	W13	W-5	L-1	H--	W-8	3.5
1123015	5 FOREST, JAMES A	FL	1265	W10	L-4	W-9	W-6	D-2	3.5
11041141	6 WAGNER, CURTIS A	FL	1310	W-9	W-8	L-2	L-5	W10	3.0
11522290	7 BARKER, RON D	FL	1259/21	W14	L-2	H--	W11	L-1	2.5
11197311	8 ZIMMA, NONEEN	FL	880/9	W12	L-6	B--	L-3	L-4	2.0
11333737	9 HAPPEL, PAUL	FL	0	L-6	W12	L-5	W13	L-3	2.0
11333745	10 STEELE, ANDREW	FL	0	L-5	W13	L-3	W14	L-6	2.0
11333753	11 BARKIN, MIKE	FL	0	L-2	L-1	W14	L-7	W13	2.0
11340865	12 WILKENS, MITCH	FL	0	L-8	L-9	L13	B--	W14	2.0
11333796	13 HAPPEL, MIKE	FL	0	L-4	L10	W12	L-9	L11	1.0
11333681	14 REGAN, MARK	FL	0	L-7	L-3	L11	L10	L12	0.0

TAMPA BAY SCHOLASTICS
OPEN
TAMPA, FL 33609
11-19-77

ID	PLAYER	ST	RING	PRE	POST	RTNG	1	2	3	4	5	TOT
10235898	1 SANDERS, GARY J	FL	2049	2066	W13	W-4	D-2	D-3	W-8	---	---	4.0
10227518	2 BOND, ROBERT M	FL	2036	2055	W-5	W15	D-1	W-7	D-3	---	---	4.0
10235120	3 PALEVEDA, NICHOLAS	FL	2059	2061	W-9	D-8	W-7	D-1	D-2	---	---	3.5
10423481	4 DE FONCE, ROBERT J	FL	1838	1844	W-6	L-1	W-8	W12	L-5	---	---	3.0
11041167	5 BUEL, ERIC M	FL	1721	1731	L-2	L-6	B--	W15	W-4	---	---	3.0
11271120	6 MILLER, JR JOHN M	FL	0	1809	L-4	W-5	L-9	W10	W11	---	---	3.0
10226571	7 PEEPLES, ROGER E	FL	1942	1920	D11	W13	L-3	D-2	W12	---	---	2.5
10306442	8 CAMPBELL, CRAIG T	IA	1764	1781	W11	W12	D-3	L-4	W-9	L-1	---	2.5
10227879	9 LANG, CHARLES W	FL	1723	1737	L-3	W-1	W-6	L-8	---	---	---	2.0
11032427	10 SMITH, DANIEL K	FL	1709	1705	---	---	---	W14	L-6	W15	---	2.0
10278589	11 DICKOVER, JOHN N	FL	1652	1648	D-7	L-9	W15	H--	L-6	---	---	2.0
11333583	12 WILLIAMS, ROBERT E	FL	0	1629	L-8	W14	W13	L-4	L-7	---	---	2.0
10227496	13 TEDORSON, EON R	FL	1726	1696	L-1	L-7	L12	W14	---	---	---	1.0
10236410	14 SCHOFIELD, H ROBER	FL	1275	1258	L15	L12	L10	L13	B--	---	---	1.0
11333567	15 WILLIAMS, JOSEPH A	FL	0	1439	W14	L-2	L11	L-5	L10	---	---	1.0

TOURNAMENTS

March 4-5, 1978 (GA)

9TH SOUTHERN HS CHAMPIONSHIP

6-SS, Sheraton Inn, Atlanta Airport, 1325 Virginia Avenue, Hapeville, Georgia. Open to all HS students in AL, AR, FL, GA, KY, LA, MS, NC, SC, TN, or VA. EF: \$9 - 11. \$\$ 300 & trophies. REG: 9 - 10. ENT: GCA, 4153 Wesley Club Drive, Decatur, Ga. 30034. NS. In 2 Sections: Championship: 40/100. \$\$ (in expenses to Nat. HS Champ) 150-100-50; trophies to top 5, top 4 4-man teams (top 3 teams must play in Nat. HS to receive prize). Novice: 40/80. Open to all under 1400 or Unr. Trophies to top 6, top E, top 4 4-man teams. Both, EF: \$9, if mailed by 2/24; \$11 at site. GCA mem req. (\$4), other states ok. \$2 off EF if joining GCA plus USCF (Reg. member). HR: 22, up to 4 in room. RDS: 11-3:30-8; 9-1-5.

March 4-5, 1978 (GA)

9TH SOUTHERN CONGRESS

5-SS, Sheraton Inn - Atlanta Airport, 1325 Virginia Avenue, Hapeville, Georgia. REG: ends 9 AM ENT: GCA, 4153 Wesley Club Drive, Decatur, Georgia 30034. NS. In 2 sections: Open, 45/2. EF: \$12.50, if mailed by 2/24; \$15 at site. \$ 150-90-60, B, below 1600 each 50; trophies to 1st, top B, below 1600. (1st guaranteed, others based on 40 entries in section) Both: GCA mem req. (\$4), other states ok. More \$\$ per entries. RDS: 10-3-8; 9:30-3. HR: \$22 up to 4 in room.

March 11-12, 1978 (GA)

MICHIGAN CHESS CAMP SCHOLARSHIPS

4-SS, 40/1, YMCA, 145 Luckie Street NW, Atlanta, Georgia. Open to everyone, but only those under 19 are eligible for scholarships. EF: \$8. Based on 30 entries trophies to 1st, 2nd and 1st under 1400. Scholarships \$80 to 1st & \$80 to top under 1400. More based on additional entries. 100% of entries for \$ prizes only less rating fee and room cost. If the 1st place winner does not use the scholarship, it will go to 2nd, 3rd, and so on until the funds are used. USCF rated and GCA required.

March 12, 1978 (ROCK HILL SC)

1st MARCH SECTIONAL - in 8-man sections

3-SS, EF: \$3 with \$20 to 1st each full section. Rds. 10-2-6 t./c. 40/90 SCCA mem. Req. MARCH 25-26, 1978 2nd Annual ROCK HILL OPEN 5-SS, EF: \$10 if by 3/12, at site \$13 ENT. Marvin Chappell, Jr., Rt. 5, Box 260, Rock Hill, S.C. 29730, Rds. 10-3-7, 10-3 T./C. 50/2, Based on 25 ent.s, \$100-\$40, C,D,E, AND UNR. each \$25 Upset \$10 (if over 200 pts.) SCCA mem req. April 1, 1978 - FOOL'S DAY QUADS 3-RR, EF: \$4 with \$12 to 1st each full quad, Rds. 10-2-6 T./C. 40/90 SCCA mem req.

ALL REG 9-10 AM, site is York Tec. College, 21 Bypass (NE side of town) Rock Hill, S.C. 29730

Also: NS

March 17-19, 1978 (FLA)

U.S.S. VALIANT OPEN

\$500.00 Gauranteed! 5-SS 40/2. Multipurpose room at Florida Technological University, Alfaya Trail and FTU Blvd., Orlando. EF: \$15.00 if received by 3/16/78, \$20.00 at door. FCA required (\$5, Jrs. \$3), other states ok. \$\$ (Guaranteed) \$160-115-75, 1st B 50, 1st D/E 50. Trophy to 1st. REG: 5-7 PM RDS: 7:30, 10-5, 903. HR: 13.50-18.50 University Inn, 11731 E. Colonia Drive, Box 14052, Orlando, Fla. 32807. ENT: Mark Solomon, 6 Bayberry Branch, Cassalbarr, Fla. 32707.

March 18-19, 1978 (GA)

"TRY TO BEAT A KING BENEFIT"

Try out for a board on National Chess League Team. YMCA (Downtown) 145 Luckie Street, Atlanta, Georgia, Phone 525-5401. 5-SS 40/80. Open to all. Free EF to member of the Atlanta Kings who will not be paried against their own team mates. This will be an opportunity for chess players to match up against the strongest players in Georgia. All profits from this tournament will go to support the Atlanta Kings. EF: \$7 at site, \$2 less if received by 3/10/78. \$2 less to players under age 17. Prizes: books for those able to beat or draw a King. It is anticipated that anyone finishing 4-1 will be allowed to play one round as a member of the Kings. GCA required, other state ok. REG: 9-9:15, Room 223 YMCA. RDS 9:30-12:30-3:30; 10:30-1:30. Advance entries: Steve Schneider, 3135 Buford Hwy, Apt. #1, Atlanta, Georgia 30329.

March 18, 1978 (GA)

THOMASVILLE QUICK SWISS NO. 12

3-SS in 6-man sections, 45/90, Thomas County Federal Building at the corner of Remington & Dawson Streets, Thomasville, Georgia 31792. EF: \$4.50 if received by March 11th; \$5.50 at site. Prizes: Trophies to Top 2 each section. GCA membership req. (\$4/yr. \$7/2 yrs.) other states ok. REG: Ends at 9:45 A.M. RDS: 10:00 - 1:30 - 4:30. Enter: International Chess Imports, 3055 Genergal Lee Road, Macon, Georgia 31204. NS.

NONRATED BEGINNERS TOURNAMENT NO.2

4-SS 40/1, EF: \$5, Under 18 \$3. REG: Ends at 10:00 A.M. RDS: 10:15 - 12:30 - 3:00 - 5:15. All other details are as above.

March 19-23, 1978

THE 12TH ANNUAL NATIONAL OPEN

April 1, 2, 1978

FLORIDA STATE JR. CHESS OLYMPICS
(Cocoa Fl.) See C.L.R. for details

\$1050 - CASH GUARANTEED

April 1, 2, 1978 (GA)

3RD ANNUAL I.C.I. CLASSIC - \$1050 GPF

Sheraton Inn-Atlanta Airport, 1325 Virginia Avenue, East Point, Georgia 30344. In 3 sections, OPEN: 5-SS, 45/2, Entry Fee: \$18.50 if received by March 23rd; \$20.00 at site. Prizes: \$200.00 - 100.00 - 50.00; Classes A, B, and C each \$100.00; Trophies to 1st & 2nd Place, Classes A, B, And C. AMATE (under 1400), 5-ss, 45/2, Entry Fee: \$16.50 if received by March 23rd; \$18.00 at site. Prizes: \$150.00 - 75.00 - 25.00; Classes E and Unrated each \$75.00; Trophies to 1st, Classes E and Unrated; Trophies to Top College Student, Top High School Student, Top Junior under 18, Top Woman and Top Upset in either section above with the most points; Books to plus schorees not winning anything else; Farthest Distance Award- \$20.00; and Drawing for early entry- chess set. Both, Registration: Ends at 9:45 A.M. Rounds: 10 - 3 - 8; 10 - 3. $\frac{1}{2}$ - point by in rounds 1 or 2 but not both if requested in advance. I.C.I'S SCHOLASTIC NOVICE: Open to under 1400 in High School or Pre-high School. 4-SS, Rounds 1 and 2 - 30/30; Rounds 3 and 4 - 40/1. Entry Fee: \$5.00 if received by March 23rd; \$7.00 at site. *Prizes: Trophies to Top 4, Top 1200, Top 1100, Top 1000 & Below, and Elementary Student. Registration: Ends at 9:45 A.M. Rounds: 10-11:30 - 1:30 - 3:30. ALL, Georgia Chess Association membership required, (\$4/yr., \$7 /2 yrs.) other states ok. Hotel Rates: \$22.00 up to 4 in room. If 3 - 3-man teams, then team trophy. Mention Chess Tournament. Enter: INTERNATIONAL CHESS IMPORTS, 3055 General Lee Road, Macon, Georgia 31204. NS.

April 8, 9 SARASOTA OPEN for details write David, Chandler, 4408 Drake Blvd., East Bradenton, Fl. 33505 or check C.L.R.

April 8-9, 1978 (GA)

SOUTHEASTERN OPEN

5-SS 40/2 EF: \$15, if received by April 1, \$18 at site. Elbert County Comprehensive High School, 450 Rhodes Drive, Elberton, Georgia. Enter: Greg Maness, 710 Heart St., Elberton, Georgia 30635. N.S. REG: 9-9:45. HR Granite City Motel \$12, \$15. Prizes: Based on 50 players, 250-125-75-50-35. Top A,B,C,D,E, \$35 each. USCF & GCA required, other states ok.

April 14-16 Patrick Air Force Base Open (Cocoa)
See C.L.R. for details

April 15-16, 1978 (GA)

GEORGIA SOUTH CAROLINA OPEN

5-SS 45/2. Embassy Tower Motel, 444 Broad Street, Augusta, Georgia. In 2 Sections. Open to all. EF: \$13, if mailed by 4/5/78, \$15 at site. Prizes: (1st guaranteed, others based on 35 entries in section). \$150 - 1--0 75 A 50, B50. Trophies to 1st, top A, B. Reserve: (Open to all under 1600 or unrated) EF: \$10 if mailed by 4/5/78, \$12.00 at site. Prizes: (1st guaranteed, other based on 45 entrants in section): \$125 - 80 - 50, D 40, E 40, Ur. 40. Trophies to 1st, D, E, Ur. Both: GCA or SCCA membership required. REG: 8:30-9:30 A.M. 4/15. RDS: 10-3-8; 9-2:30. Enter: Georgia Chess Association, 2672 Moss Lane, Marietta, Georgia 30067.

April 22-23 I.C.I. Orlando Open for details write International Chess Imports, 3055 General Lee Rd., Macon, Ga. 31204 or see C.L.R.

April 22-23, 1978 (NC)

1ST THOMAS Y. GALLOWAY MEMORIAL

5-SS 50/2, Brevard High School, Country Club Rd., Brevard, NC. In three sections. OPEN: \$175-90-45, Top under 1900, 1800 each 45; Trophy to first. AMATEUR: \$150-75-40, Top under 1575, 1450 each 40. NOVICE: \$100-50-35, Top under 1150, Unrated each 35. ALL: Prizes based on 70 total entries, 95% of advance EF's returned in prizes, 80% of late EF's. EF: \$15 if received by 4-15, \$18 later. One prize per player, UNR. limited to \$50 in Novice, \$75 in Amateur. Rating limits for class prizes will be changed if less than 3 in a class. NCCA mem. req., other states ok. GCA and SCCA sold at site. Reg: 8-9:30 AM. RDS: 10-3-8- 10-3. Hotel: Brevard motor Lodge, US 64 & 276, Brevard, NC 28712 (mention tnmt.), 11.44 (one bed)-\$15.60 (two beds), any number in room. ENT: Tom Galloway II, 210 Maple St., Brevard, NC 28712. LS.

April 29, 30 Fla. State Jr. Chess Championship (G. Grant, Merritt Island, Fl.)
See C.L.R. for details

April 29-30, 1978 (GA)

Lanierland Open

5-SS 50/2 Gainesville High School, 1120 Rainey St., Gainesville, Ga. EF: \$15 if received by 4/22, \$18 at the site, GCA Membership required (\$4/yr, \$7/2 yrs) other states ok. \$\$ (based on 40 entries): \$200 - \$100 - \$50, Top A,B,C,D,E each \$50. Registration 9-10, 4/29. Rds: 10-3-8, 10-3 Enter: Lewis Miller, Route 7, Box 434A, Gainesville, Ga. 30501. LS

May 5-7 Florida Experts Tournament at BCC (in 2 sections) (Cocoa, FL.) 555 at Brevard Community College, 1519 Clearlake Rd., Cocoa, Fl. 32922, Championship section: open to those rated 1800 and above (April rating supplement used) EF: \$16 if received by 4/29 \$20 at door. \$\$ 150, 100, 50, trophies to top 3 (based on

20 entries} Reg 6:30-8 PM 5/5 Rds. 8 PM, 10 AM - 4; 9 AM, 3. Candidates Section:
open to those rated 1799 or below (April supplement) E.F. \$12 if received by 4/29,
\$15 at door. \$5 100, 50, 25 under 1600, 45 30; under 1400, 35, 20 Trophies to 1st,
2nd, 3rd, best under 1600, best under 1400, top unrated. (Based on 30 entries) Reg:
8:30 - 10 AM Rds: 10, 3, 8; 9, 2:30. Ent: both sections, Broward Community College
Chess Club, P. O. Box 711, 1519 Clearlake Rd., Cocoa, Florida 32922 (PCA reg.) (L.
Storch T.D.).

May 6-T, 1978 (GA)

Georgia Championship

5-SS, Holiday Inn, I-75 at Lockheed-Dobbins Exit, Marietta, Ga. Reg.: 8:30-9:30 AM
5/6. Rds. 10-3-8; 9-3:30. GCA business meeting 1:30 PM 5/7. GCA memb. req'd.
(\$4, \$7 two years): other states ok. HR: Adults - \$18-24, each add'l. \$4; juniors
(under 20) - \$15-20 up to 4 in room. ENT.: GCA, 2672 Moss Lane, Marietta, Ga.
30067. No Smoking.

In 2 sections: Open, 45/2. EF: \$15, under 20, \$13. Prizes: (1st guaranteed:
others based on 35 players in section): \$150-90-60, top 3 40. Trophies to 1st and
top B. Amateur - 40/100. (Below 1600 players in section): \$120-75-45, B/E 30,
Unr. 25. Trophy to 1st, top D E, Unr. Greg Manness will be the TB.

JOIN THE SOUTHEASTERN CHESS SOCIETY

BENEFITS: You will receive The Chessman six times per year, and be entitled
to special discounts on U.S.C.F. memberships.

RATES

Adult 1 yr.	S.C. or GA. \$4.00, with USCF \$16.00, FLA. \$5.00
Adult 2 yr.	S.C. or GA. \$7.00
Junior 1 yr.	S.C. or FLA. \$3.00, with USCF \$9.00, GA. \$4.00, with USCF \$12.00
Junior (no magazine)	S.C. or GA. \$1.00, with USCF \$3.00
Junior Non-participating USCF, GCA	1 yr. S.C. \$5.00 GCA \$6.00
Family (One magazine)	FLA. \$7.50
Spouse (Family with 1 full membership already)	S.C. \$2.00

Send Membership Application to,

Florida: Gil Cantrell, 440 67th Ave., N. Pinellas Park, Florida 33563

Georgia: Tom Fallis, P.O. Box 76242, Sandy Springs, GA 30326

South Carolina: Charles Braun, 7 Winthrop Drive, Aiken, SC 29801

Make Checks payable to: G.C.A., S.C.C.A., or C.C.A.

NAME: _____ INDICATE NEW OR RENEWAL _____

ADDRESS: _____

CITY: _____ STATE: _____ ZIP CODE: (Req'd) _____

PHONE: _____ IF JUNIOR, BIRTHDATE: _____

Georgia-South Carolina Open

AUGUSTA GA.

April 15-16

5-SS

45/2

Embassy Tower Motel

444 Broad St.

Open Section

Entry Fee \$13 if mailed by 4/5 \$15 at Site Trophies 1st, Top A, Top B
Prizes \$150,100,75, A 50, B 50 (Based on 35 1st Guaranteed)

Reserve Section

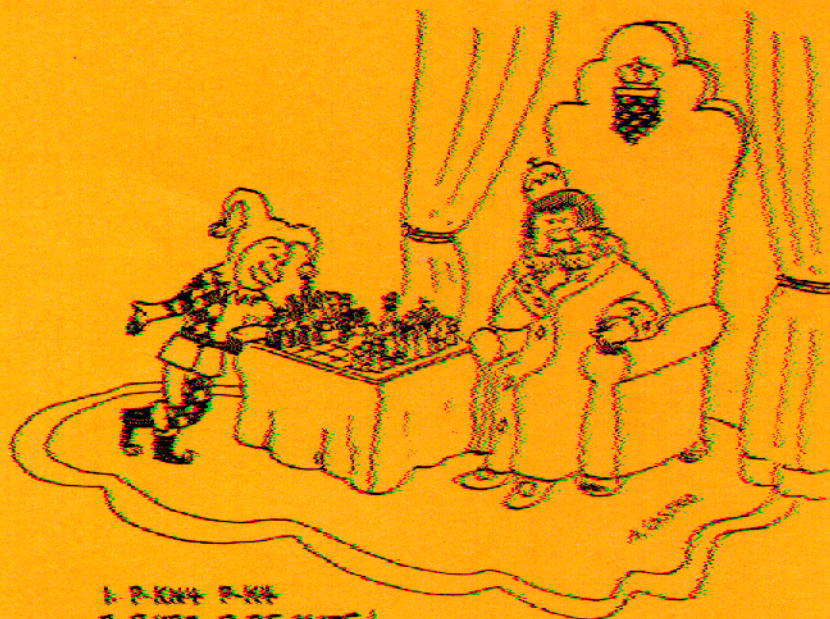
Entry Fee \$10 if mailed by 4/5 \$12 at Site Trophies 1st, Top D, E, Unrated
Prizes \$125,80 50, D, E, Unr 40 Each (Based on 45 1st Guaranteed)

BOTH

GCA or SCCA Required

Registration: 8:30-9:30 AM Rounds 10-3-6-9-2-30

Enter G.C.A. 2672 Moss Lane Marietta, Ga. 30067



G.C.A. Newsletter
P.O. Box 76242
Sandy Springs, GA 30328

POSTAGE AND RETURN
POSTAGE GUARANTEED.

29801 EXP 08/00
LEE HYDER
33 LONGWOOD
AIKEN, SC 29801

BULK RATE
U.S. POSTAGE
PAID
PERMIT NO. 178