

The Chessman

PRICE 75c

VOLUME 2 NUMBER 2



IN THIS ISSUE

THE S.C. CHAMPIONSHIP
TOURNAMENT RESULTS
THE OLYMPIAD
POSTAL CHESS
CHESS CLUBS
GAMES

The Chessman

FLORIDA CHESS ASSOCIATION

President

Gilbert Cantrell
4040 57th Ave. N.
Pinellas Park, Fl. 33565
Phone: (813) 527-6010

Vice President

Larry Storch
5999 Curry Ford Rd. #112
Orlando, Fl. 32807
Phone: (305) 273-4982

Sec-Treas.

Flora Cantrell
(Same as President)

Directors:

Arnold Benker
2701 N. Ocean Blvd. 8B
Ft. Lauderdale, Fl. 33308
Phone: (305) 564-6126

Charles Turk
12802 SW 12th Terr.
Miami, Fl. 33184
Phone: (305) 226-8235

Garry Sanders
421 Pinellas Way S.
St. Pete, Fl. 32903

Egon Teodorson
775 Malibu Lane
Indianapolis, Fl. 32903
Phone: (305) 773-3215

Mark Solomon
6 Bayberry Branch
Casselberry, Fl. 32707
Phone: (305) 831-0176

Douglas Carpenter
2853 Post St. Apt. 3
Jacksonville, Fl. 32205
Phone: (904) 389-7989

GEORGIA CHESS ASSOCIATION

President

Steve Schneider
1331 North Decatur Rd.
Atlanta, Ga. 30306
Phone: (404) 378-5977

Vice President

L. Thad Rogers
3055 General Lee Rd.
Macon, Ga. 31204
Phone: (912) 742-5607

Vice President

Chess Clubs
Lew Martin
P.O. Box 10354
Atlanta, Ga. 30318

Secretary

Jared Radin
1458 Sheffield Dr.
Atlanta, Ga. 30329
Phone: (404) 654-6598

Treasurer

Steve Hunt
4153 Wesley Club Dr.
Decatur, Ga. 30034
Phone: (404) 284-8528

Editor (Acting)

Mike Decker
1604-4 Briarcliff Rd.
Atlanta, Ga. 30306
Phone: (404) 874-6909

Tournament Organizer

Gregg Maness
710 Heard Street
Elberton, Ga. 30635
Phone: (404) 283-3968

PUBLISHER'S WINKER

Vacant

Junior Officers

Tom Morris
Room 218 Dobbs Hall
Emory University
Phone: (404) 635-8935

Membership Director

Bill Noyes
777 Briarcliff Rd.
Atlanta, Ga. 30306

NORTH CAROLINA CHESS ASSOCIATION

President

Bill Wall
Box 157
Sunny Point, NC 28678

Vice President

Alan Esham
2635 Glenhaven Lane
Winston-Salem, NC 27102

Sec-Treas.

Tom Galloway
421 Morrison
Chapel Hill, NC 27514

Editor

Sean T. O'Brien
537 Winston James
Chapel Hill, NC 27514

PENNSYLVANIA STATE CHESS FEDERATION

President

Ira Lee Riddle
Fox Run Apts. #14
365 Newtown Rd.
Warminster, Pa. 18914
Phone: (215) 674-9069

Vice President

Tom Hager
1120 Jacks Run Rd.
N. Versailles, Pa. 15137

Secretary

Bob Dudley
107 Crosscove Rd.
Coraopolis, Pa. 15068

Treasurer

Gary Connors
95 Seneca Dr.
Hollidaysburg, Pa. 17033
Phone: (717) 355-0878

SOUTH CAROLINA CHESS ASSOCIATION

President

William Dodgen
2008 Robin Road
N. Augusta, SC 29841
Phone: (803) 279-6881

Vice President

Marion Mahaffey
1307 Memorial Blvd. Rd.
Lancaster, SC 29320
Phone: (803) 282-2312

Secretary

Charles Braun
7 Winthrop Dr.
Aiken, SC 29801
Phone: (803) 648-5446

Treasurer

Harold Kelly
811 Rhododendron Pl. SE
Aiken, SC 29801

Editor - M. Lee Hyder

33 Longwood Dr.
Aiken, SC 29801

EDITOR-IN-CHIEF

Barrie Morrison

ASSOCIATE EDITORS

Arnold Benker: Mike Decker: Sean O'Brien: Ira Lee Riddle: Lew Hyder:

BOARD

INTERNATIONAL CHESS		
THE NEW YORK CHESSMAN, N.Y. ASSOCIATION	15	Arnold Benker
WEST GERMAN FIDEAL CHAMPIONSHIP	15	Mike Decker
THE 1976 OLYMPIAD	1, 6	Arnold Benker
NORTH CAROLINA		
COLUMBUS CHESS	4	Barrie Morrison
THE INTERNATIONAL CHESS CLUB	15	Gary Connors
THE ATLANTA BRANCH	15	Mike Decker
THE CENTER CHESS CENTER	15	Cliff Brown
COLUMBUS CHESS	7	Sean Hyder
THE LEE RIDDLE (N.C.)	15	Ira Lee Riddle
ONE DANCE INTERNATIONAL FIDEAL	15	Bill Esham
WORLD FIDEAL	15	Barrie Morrison
LOWER ROCK COUNTY	15	Barrie Morrison
O'REILLY FIDEAL	15	Barrie Morrison

CHESS NEWS & ARTICLES

THE ELECTIONS	15	Tom Hager
Compilers:	111	William Dodgen
EXHIBIT: THE FIDEAL	111	Mark Williams
NOTES FROM THE FIDEALITY'S DEPT. (N.C.)	111	William Dodgen
RANKING: ALICE	111	Arnold Benker
THE NEW YORK CHESS CLUB	111	Bill Dodgen
CHESS LEAGUE (N.C.)	111	Cliff Brown
SC CHAMPIONSHIP	111	Sean Hyder
WHITE	111	Bill Dodgen
SC TREASURER REPORT	111	Mike Decker
SC SECRETARY REPORT	111	Charles Braun
SC BULLET	111	Charles Braun

EDITORIAL

CLUB: 15-16 PER LINE AND EACH LINE	14	Steve Schneider
RELATED PROBLEMS OF MONEY	14	Tom Galloway
VISITORS	14	Cliff Brown
THE SC FIDEALITY'S POWER	14	Cliff Brown
RETURN TO THE FIDEAL	14	Cliff Brown
NOTES: (N.C.) (N.C.)	14	Cliff Brown

CHESS TO GO: CHESS

CHESS CLUB	15	
TOURNAMENT	15	

TOURNAMENT RESULTS

COLUMBUS	15	
----------	----	--

PENNSYLVANIA

CHESS TO PENNSYLVANIA V	15	Ira Lee Riddle
TO THE PENNSYLVANIA CHESS FEDERATION	15	Barrie Morrison
SCHEIDT: CHESS IN PENNSYLVANIA	15	Ira Lee Riddle

SCOUT

REGIONAL FIDEAL RESULTS

N.Y. - Atlantic

Bob Decker

(See Penny/Ocean Officers)

Southwestern

Henry Richmond III

1945-1946-47-48

W. J. Gaudin, Jr., 1946-47

L. Thad Rogers

(See Georgia Officers)

M. Lee Hyder

(See N.C. Officers)

SPECIAL ANNOUNCEMENTS

THE REGIONS FIDEALITY'S
THE N. CAROLINA FIDEALITY'S
FIDEALITY'S

CHESS FIDEALITY'S
Chris Powers, FIDEALITY'S
Ch. Open FIDEALITY'S

Senior Chess: 1946-47-48
will play in FIDEALITY'S
at FIDEALITY'S FIDEALITY'S
1946-47-48, 1946-47-48
1946-47-48, 1946-47-48
1946-47-48, 1946-47-48



REGIONAL FIDEALITY'S

Robert Webb

1946-47-48, 1946-47-48

1946-47-48, 1946-47-48

1946-47-48, 1946-47-48

1946-47-48, 1946-47-48

1946-47-48, 1946-47-48

1946-47-48, 1946-47-48

1946-47-48, 1946-47-48

1946-47-48, 1946-47-48

1946-47-48, 1946-47-48

1946-47-48, 1946-47-48

1946-47-48, 1946-47-48

1946-47-48, 1946-47-48

1946-47-48, 1946-47-48

1946-47-48, 1946-47-48

1946-47-48, 1946-47-48

1946-47-48, 1946-47-48

1946-47-48, 1946-47-48

1946-47-48, 1946-47-48

1946-47-48, 1946-47-48

1946-47-48, 1946-47-48

1946-47-48, 1946-47-48

1946-47-48, 1946-47-48

1946-47-48, 1946-47-48

1946-47-48, 1946-47-48

1946-47-48, 1946-47-48

1946-47-48, 1946-47-48

1946-47-48, 1946-47-48

1946-47-48, 1946-47-48

1946-47-48, 1946-47-48

1946-47-48, 1946-47-48

1946-47-48, 1946-47-48

1946-47-48, 1946-47-48

1946-47-48, 1946-47-48

1946-47-48, 1946-47-48

1946-47-48, 1946-47-48

1946-47-48, 1946-47-48

1946-47-48, 1946-47-48

1946-47-48, 1946-47-48

1946-47-48, 1946-47-48

1946-47-48, 1946-47-48

1946-47-48, 1946-47-48

1946-47-48, 1946-47-48

1946-47-48, 1946-47-48

1946-47-48, 1946-47-48

1946-47-48, 1946-47-48

1946-47-48, 1946-47-48

1946-47-48, 1946-47-48

1946-47-48, 1946-47-48

1946-47-48, 1946-47-48

1946-47-48, 1946-47-48

1946-47-48, 1946-47-48

1946-47-48, 1946-47-48

1946-47-48, 1946-47-48

1946-47-48, 1946-47-48

1946-47-48, 1946-47-48

1946-47-48, 1946-47-48

1946-47-48, 1946-47-48

1946-47-48, 1946-47-48

1946-47-48, 1946-47-48

1946-47-48, 1946-47-48

1946-47-48, 1946-47-48

1946-47-48, 1946-47-48

1946-47-48, 1946-47-48

1946-47-48, 1946-47-48

1946-47-48, 1946-47-48

1946-47-48, 1946-47-48

1946-47-48, 1946-47-48

1946-47-48, 1946-47-48

1946-47-48, 1946-47-48

1946-47-48, 1946-47-48

1946-47-48, 1946-47-48

1946-47-48, 1946-47-48

1946-47-48, 1946-47-48

1946-47-48, 1946-47-48

1946-47-48, 1946-47-48

1946-47-48, 1946-47-48

1946-47-48, 1946-47-48

1946-47-48, 1946-47-48

1946-47-48, 1946-47-48

1946-47-48, 1946-47-48

1946-47-48, 1946-47-48

1946-47-48, 1946-47-48

1946-47-48, 1946-47-48

1946-47-48, 1946-47-48

1946-47-48, 1946-47-48

1946-47-48, 1946-47-48

1946-47-48, 1946-47-48

1946-47-48, 1946-47-48

1946-47-48, 1946-47-48

1946-47-48, 1946-47-48

1946-47-48, 1946-47-48

1946-47-48, 1946-47-48

INTERNATIONAL CHESS

OVER THE BOARD BY ARNOLD DENKER

POSTAL BY MIKE DECKER

Fridrik Olafsson, a marital court judge by profession, is to my mind the greatest chessplayer Iceland has ever produced. Precise in attack and especially relentless when an opponent makes the tiniest slip, here is a classic example taken from the 1978 Reykjavik International of this year. His careless opponent on this occasion is none other than the great Dane Bent Larsen.

Reykjavik International 1978

ALEKHINE'S DEFENSE

(W) F. Olafsson (GM)

(B) B. Larsen (GM)

1 P-K4 N-KB3 5 B-QB4 N-N3
2 P-K5 N-Q4 6 B-N3 B-N2
3 P-Q4 P-Q3 7 N-N5 P-Q4
4 N-KB3 P-KN3

Should Black castle on move 7 he would find himself in trouble after 8 P-K6.

8 O-O N-B3 9 P-QB3 B-B4

Black's 9th is a bit careless. Instead he should force the N to retreat with P-KR3 at once.

10 P-N4 BxN 13 B-B2 N-Q1
11 Q-B3 O-O 14 Q-R3 P-KR3
12 RxB Q-Q2 15 P-B4 ...

White's 15th P-B4 is a real master stroke giving momentum to the attack

15 ... PxN 16 P-B5 N-K3

Black's 16th N-K3 is an attempt to stall white's attack by giving up a piece. White threatened BxP followed by PxP leading to an early mate.

17 PxN QxP 20 PxP KR-B1
18 QBxP P-QB4 21 B-B5 PxB
19 K-R1 PxP

White's 21st B-B5 is another example of precise play leading to a quick decision. Had black instead played 23 ... K-B the finish would have been 24 P-B6, PxP; 25 PxP, BxP; 26 B-R6ch, and a mate will follow.

22 PxP Q-QB3 24 QR-K1 K-B1
23 R-N1 Q-B7 25 P-B6 Resigns

Olympiad 1978

Palermo, Argentina

QUEEN'S INDIAN DEFENSE

(W) Miles

(B) Spassky

1 P-Q4 N-KB3 2 N-KB3 P-QN3 3 P-B4
P-K3 4 B-B4 B-N2 5 P-K3 B-K2 6
P-KR3 O-O 7 N-B3 P-Q4 8 PxP PxP 9
B-Q3 P-B4 10 O-O N-B3 11 N-K5 P-QR3
12 Q-B3 R-K1 13 QR-Q1 PxP 14 NxN BxN
15 PxP P-QN4 16 P-R3 N-K5 17 B-N1
Q-N3 18 KR-K NxN 19 QxN P-N5 20 Q-KN3
PxP 21 PxP B-R5 22 R-QB1 Q-N7 23 BxP
ch KxB 24 RxB RxB 25 Q-R4ch K-N1 26
QxR QxQ 27 B-K5 Q-N3 28 Q-N5 Q-R3
29 QxQ PxQ 30 R-B3 K-B1 31 R-B5 R-Q1
32 B-B6 R-Q3 33 R-B8ch B-K1 34 B-Q4
R-K3 35 R-Q8 K-N1 36 RxB R-K8ch 37
K-R2 R-Q8 38 R-Q8 K-R2 39 P-N4 R-Q6
40 P-B4 P-QR4 41 P-B5 Resigns

Olympiad 1978

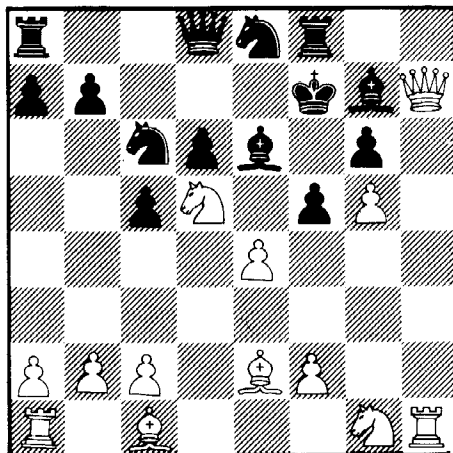
Palermo, Argentina

PIRC DEFENSE

(W) Liu Wen-che

(B) Donner

1 P-K4 P-Q3 9 P-N5 PxNP
2 P-Q4 N-KB3 10 PxNP N-K1
3 N-QB3 P-KN3 11 Q-Q3 PxP
4 B-K2 B-N2 12 NxP N-QB3
5 P-KN4 P-KR3 13 Q-KN3 B-K3
6 P-KR3 P-B4 14 Q-R4 P-B4
7 P-Q5 O-O 15 Q-R7ch K-B2
8 P-KR4 P-K3



16 QxPch KxQ 19 P-N6ch K-N2
17 B-R5ch K-R2 20 BxBch Resigns
18 B-B7ch B-R3

Notes for The Chessman contributed by Herr Walther and translated by Mike Decker.

The following game is tops - JEM

1977 West German Postal Championship

SICILIAN DEFENSE

ROSSOLIMO VARIATION

(W) Ernst Walther

(B) Herbert Risch

1 P-K4 P-QB4 3 B-N5ch ...
2 N-KB3 P-Q3

I avoided entering the line with 3 P-Q4 PxP 4 NxP P-KN3 etc.

3 ... B-Q2

Also playable is 3 ... N-B3 4 O-O P-QR3
5 BxNch PxB 6 P-Q4 PxP 7 QxP P-K4 8 Q-Q3.

4 BxBch QxB 6 P-B3 N-B3
5 O-O N-QB3 7 P-Q4 NxBP

This pawn sacrifice can be found in ECO B 52/7 and in Informant 22 where the following line is given: 8 P-Q5 N-Q7! (8...N-K4! in Informant 11) 9 R-K1 P-B4! 10 QN-Q2 N-KB3

8 P-Q5 N-N1 10 N-R3 P-KN3
9 R-K1 N-KB3

Black finally comes to play P-KN3 although P-KR3 seems a better alternative.

11 B-N5 B-N2 14 QR-Q1 N-B2
12 Q-K2! P-KR3 15 N-B4 K-B1?!
13 B-R4 N-R3

If 15 ... O-O then 16 QxP QxQ 17 RxB N(2)xP 18 R-Q7 follows.

16 N-K3 P-KN4 18 N-K5!! BxN
17 B-N3 N-R4?!

18 ... PxN seems better.

19 BxB PxB 21 N-B4 ...
20 QxN N-K1

Now I will have a permanently backward pawn to play against.

21 ... P-B3 22 Q-B3! K-N1!

The threat was RxB.

23 RxP!! P-N5!

This came as a surprise. After 23 ... P-N4! I would probably have had to try 24 P-Q6! NxP 25 NxN PxN 26 R(5)-Q5.

24 Q-B5!! ...

I could find nothing else since my Rook is threatened.

24 ... QxQ 26 N-K3 P-KR4
25 RxQ P-N4 27 P-Q6!

Again a pawn sac.

27 ... PxP 30 RxB N-N2
28 R(1)-Q5! K-B2 31 R-R4! P-B4
29 RxBP RxB 32 R-R6

Black must now compromise his position further.

32 ... R-Q1 35 K-K2 K-N2
33 N-Q5 N-K1 36 R-K6 K-B2
34 K-B1! R-Q2

Forced since 36 ... N-B2 allows NxN, RxB RxP. White now stands better because of the prospective pawn ending. The king rook pawn is a future passer. Therefore, I went in for the following risky combination.

37 RxN! KxB 39 NxR KxN
38 N-B6ch K-K2 40 P-N4!! ...

Making Black's Queen and Rook Pawns backward.

40 ... K-K3 41 P-B3!!

This opening of the center gives White strong play. 41 K-K3 would be a loss of time while 41 P-B4? would prematurely close up the position.

41 ... K-K4!

41 ... PxP 42 KxP and the King Rook Pawn marches.

42 PxP PxP 43 K-K3!

43 P-KR4 is still too early.

43 ... P-B5

There is scarcely anything better. After 43... K-B4 Black gets into Zugzwang with 44 P-KR4 P-B5 45 P-KN3 etc.

44 P-KR4 P-N6! 45 K-B3?

Perhaps 45 P-R5 was better.

45 ... P-Q4!

The threat is P-Q5 followed by P-B6.

46 K-K3 K-B4 48 KxB KxB
47 K-Q4 K-N5 49 P-R4!

The only way to mobilize this pawn and break up Black's pawn formation on the Queenside.

49 ... K-N5

If 49 ... PxP then KxB P-R6 K-N3.

50 PxP K-B5 51 K-Q4!

Black's King must be kept from getting to the King Knight Pawn too soon.

51 ... K-B4 56 P-N6! PxP
 52 KxP! K-K5 57 PxP K-B6
 53 K-N3 K-K6 58 P-N7 P-N7
 54 P-B4 K-B7 59 P-N8(Q) P-N8(Q)
 55 P-B5 KxP 60 Q-N7ch K-B5

" This is a draw unless White has a BP or center P on the seventh supported by the King. As a rule, it is best to have the Black King as far away from the pawn as possible, unless, of course, it can occupy a square in front of the pawn, in which case the game is a hopeless draw." Basic Chess Endings - pp 532 -Ed.

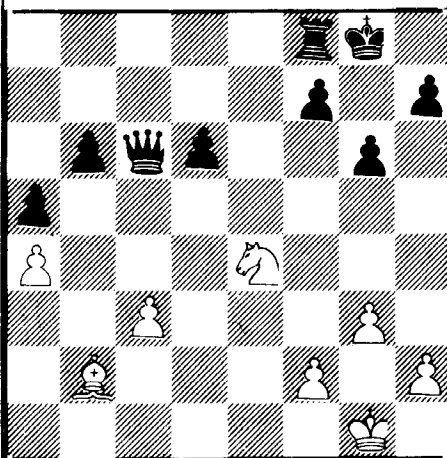
61 Q-N7ch K-B5 67 P-N7 Q-R7ch
 62 P-N5 K-N3 68 K-N5 Q-N7ch
 63 P-N6 Q-N8ch 69 K-R6 Q-R6ch
 64 K-R4 K-R4 70 K-N6 Q-N6ch
 65 Q-B5ch K-R3 71 K-B7! ...
 66 Q-B6ch K-R2?

And now because the King stands on the same rank as Black's King Black has no possibility of a perpetual check without which White simply queens his pawn. Black, therefore, resigned

"Never say die"

Warminster, Pa.
 SICILIAN DEFENSE
 (W) Roland Schroeder (Unr)
 (B) David Ost (986)

1 P-K4 P-QB4 2 P-QB4 P-Q3 3 P-Q3 N-QB3
 4 N-QB3 N-B3 5 P-KN3 B-Q2 6 B-N2 Q-B1
 7 N-B3 B-R6 8 O-O P-KN3 9 N-KN5 B-N5 10
 Q-N3 B-R3 11 P-QR3 B-N2 12 P-Q4 NxP 13
 Q-R4ch N-Q2 14 N-N5 Q-N1 15 Nxn Pxn 16
 Q-N3 O-O 17 P-QR4 N-B4 18 Q-N4 P-N3 19
 B-R1 P-QR4 20 Q-N5 B-Q2 21 P-K5 BxQ 22
 BxR BxBP 23 R-Q1 QxB 24 RxP N-N6 25 RxB
 Nxr 26 PxP PxP 27 R-B3 BxR 28 PxB Q-B1
 29 B-N2 N-N6 30 N-K4 Q-B3



White is down some material, and barely has enough to mate, but this was his first rated game, and he thought it would be better to win so--

31 N-B6ch K-R1
 32 P-QB4 P-Q4??
 33 NxQ Pch K-N1
 34 N-K7 mate

Florida
 OWEN'S DEFENSE
 (W) Mark Solomon (1759)
 (B) Roy T. Farr (1903)

Notes by the winner

1 P-K4 P-QN3

What is this? Farr is some wild Guy!

2 P-KN3 B-N2 5 N-QB3 P-QB4
 3 B-N2 P-K3 6 P-B4 PxP
 4 P-Q3 P-Q4 7 NxP! ...

Threatening to win the exchange.

7 ... Q-B2 8 Q-K2 ...

Already my Tal instincts are acting up. I want to mix up this game!

8 ... N-Q2 9 N-KB3 ...

I wanted so badly to play P-B5 here, but I couldn't show my hand before I had another piece in play. Tal says development comes first.

9 ... B-K2 14 N-K5 Q-K3
 10 P-B5! PxP 15 O-O P-KR4
 11 B-B4 Q-B3 16 QR-K1 B-B3
 12 N-Q6ch K-B1 17 N-N6ch Resigns
 13 NxB R-K1

If 17 ... PxN, the only legal move, 18 QxQ wins the exchange.

1976-77 Postal Game
 GRUENFELD DEFENSE
 EXCHANGE VARIATION
 (W) Brad Jenison
 (B) John F. Stup

1 N-KB3 N-KB3 11 P-B4 P-K4
 2 P-B4 P-KN3 12 P-QR4 P-QR4
 3 N-B3 B-N2 13 P-R4 N-N1
 4 P-KN3 P-Q4 14 Q-K3 P-B3
 5 PxP Nxp 15 N-K1 N-R3
 6 B-N2 Nxn 16 N-Q3 B-K3
 7 NfxN N-Q2 17 QR-B1 B-Q2
 8 O-O P-QB4 18 B-Q5ch K-R1
 9 B-N2 Q-B2 19 B-R3 QR-B1
 10 Q-N3 O-O 20 P-B4 ...

If 20 ... N-N5 then 21 PxP

20 ... PxP 22 Q-B3 ...
 21 NxBP KR-K1

White plans to play P-KR5 when it will be most effective.

22 ... B-B3 24 B-N2 Q-Q3
 23 P-K4 Q-Q2

Black is unsuspecting and is wasting time.

25 P-R5! P-KN4

Falling into White's trap. 25 ... BxB giving White a protected passed pawn and a fine endgame edge after 26 KPxB was better. 25... P-B4 might be best.

26 N-N6ch!! PxN 27 PxP BxB

Counting on consolidating when I stop to take his Bishop.

28 Q-R5ch K-N1 30 RxPch!! QxR
 29 Q-R7ch K-B1

If 30 ... BxR 31 P-N7ch wins.

31 BxQ BxB
 32 R-B1 R-K2
 33 Q-R8ch and White announced mate in seven. Black resigned as the continuation would have been: 33 ... B-N1 34 RxB ch K-K1 35 QxBch K-Q2 36 Q-Q5ch K-K1 37 P-N7 RxNP 38 Q-K6ch K-Q1 39 Q-Q6ch R-Q2 40 R-B8 mate.

COLUMBUS CHESS

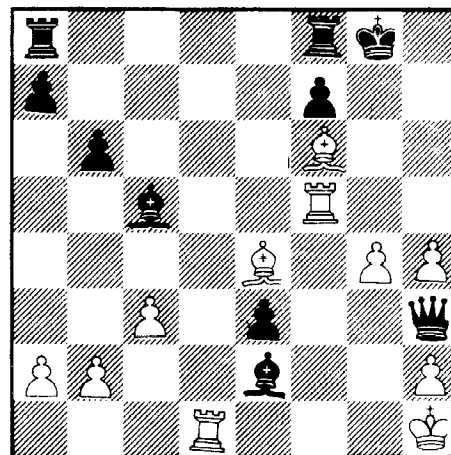
John Jones is the new Metro Columbus Chess Champion, and he is in contention to become the GCA Postal Champion.

1977 Postal Game
 CARO-KANN DEFENSE
 (W) C. A. Pitchen
 (B) John Jones

1 P-K4 P-QB3 7 B-QB4 N-N3
 2 P-Q4 P-Q4 8 B-N3 P-B4
 3 N-QB3 PxP 9 P-B3 Q-B2
 4 Nxp N-Q2 10 PxP BxP
 5 N-KB3 KN-B3 11 O-O O-O
 6 N-N3 P-K3 12 Q-K2 N(N)-Q2

12 ... B-Q2 is ECO book and then 13 B-N5, but now with the QN on Q2 B-N5 seems pointless. Ed.

13 B-N5 P-KR3 24 Nxn P-KN4
 14 B-Q2 P-QN3 25 QR-Q1 Q-B1
 15 N-Q4 B-N2 26 K-R1 Pxn
 16 B-K3 P-K4 27 PxP K-R1
 17 QR-B1 P-K5 28 BxRP P-K6ch
 18 N(N)-B5 N-K4 29 P-B3 Q-R6
 19 B-B2 N(4)-N5 30 B-N5 N-N5
 20 P-KN3 Q-Q2 31 B-K4 B-R3
 21 N-R4 N-K4 32 Pxn BxQ
 22 N(Q)-B5 N-B6ch 33 B-B6ch K-N1
 23 K-N2 Nxnch 34 R-B5 ...



Black, almost a queen up, must turn his thoughts to defense for White threatens mate on the move.

34 ... R(B)-B1 36 B-N7ch K-K1
 35 R-N5ch K-B1 37 Resigns

White must lose after 37 R-K5ch B-K2 38 B-B6 B-B6ch 39 BxB QxBch 40 K-N1 QxB wins.

1977 Postal Game
 FRENCH DEFENSE
 (W) John Jones
 (B) Otis Johnson jr.

1 P-K4 P-K3 16 KR-K1 N-Q2
 2 P-Q4 P-Q4 17 B-B3 B-KB3
 3 N-QB3 PxP 18 B-B2 BxB
 4 Nxp N-Q2 19 PxB Q-R4
 5 N-KB3 KN-B3 20 R-Q3 N-N3
 6 Nxnch Nxn 21 N-K5 RxR
 7 B-Q3 P-QN3 22 BxR R-K1
 8 O-O B-N2 23 Q-B2 Q-R5
 9 P-B3 B-K2 24 B-R7ch K-B1
 10 Q-K2 O-O 25 Q-Q2 R-K2
 11 B-KB4 P-QB4 26 Q-B4 K-K1
 12 PxP PxP 27 Q-N4 P-KN3
 13 QR-Q1 Q-N3 28 NxBP RxN
 14 P-QB4 KR-Q1 29 QxKPch K-B1
 15 B-K5 P-KR3 30 Q-Q6ch Resigns

Second Saturday Swift Swiss Columbus, Georgia CARO-KANN DEFENSE		because of nothing complex just simple King mobility. Timing is important now.		He has a hard time finding a playable variation.		1978 Billy Bowlegs Open FIRC DEFENSE	
(W) Denis Druash (A)	(B) John Jones (A)	29 K-N2 P-R3 31 RxR ...	30 K-B3 P-B4	17 P-QR4 R-R1 27 KxR RxR	18 N-Q1 N-B4 28 Q-B5 R-B5	(W) Tim Bond (1786)	(B) Brad Jenison (1883)
1 P-K4 P-QB3 5 N-KB3 KN-B3	2 P-Q4 P-Q4 6 NxNch NxN	Now's the time to cash in on the mobility.		19 P-N4 N-R5 29 P-B4 QxP	20 N-K3 NxR 30 PxP PxP	1 P-K4 N-KB3 2 N-QB3 P-Q3	3 P-Q4 P-KN3 4 N-B3 B-N2 5
3 N-QB3 PxF 7 B-Q3 ...		27 ... RxR 33 R-N4 K-B1	32 R-B4 R-Q3 34 PxF? ...	21 QxN P-B3 31 BxP N-N7ch	22 Q-Q4 PxF 32 K-Q2 QxNch	B-K2 0-0 6 0-0 QN-Q2 7 P-KR3	P-B4 8 P-Q5 K-R1 9 B-K3
Here 7 N-K5 is the move, but since I didn't know the line anyway B-Q3.		A blunder. Correct is King to Bishop four and king five.		23 PxP N-N3 33 QxQ NxQ	24 R-KN1 B-B3 34 KxN RxNP	P-QR3 10 P-QR4 P-N3 11 Q-Q2	N-N1 12 N-KR2 B-N2 13 N-N4
7 ... B-N5! 9 0-0 B-K2	8 P-QB3 P-K3 10 P-KR3 ...	34 ... NPxP?		25 P-KR4 NxP 35 B-Q3 RxP	26 R-KB1 QR-B1 and Black won	Q-N3 14 QR-N P-K3 15 B-KN5	Q-Q2 16 PxF PxF 17 NxN NxN
To get rid of that nasty pin. Here it was pretty obvious to me Black is having no real problems.		Also a blunder. No good comes from breaking up the pawns. Correct is king pawn takes, and should draw.		The Atlanta Doubles November 1978 RUY LOPEZ SCHLIEHMANN VARIATION DYCKHOFF LINE		18 P-B3 N-R4 19 KR-Q B-Q5ch	20 B-K3 B-K4 21 B-QB4 Q-KB2
10 ... B-R4 11 Q-K2 Q-Q4!		35 K-B4 K-Q2 36 K-K5 K-B3??		(W) Tom Algeo (X)	(B) Al Hamilton (B)	22 B-R6 KR-Q1 23 N-K2	23 ... P-Q4
Holy cow, I thought, now it is going from Black having no real problems to White having them. Hitting the Queen with 12 B-QB4 or P-QB4 loses I thought 12 B-KB4 might be my only try since the two Bishops would compensate somewhat for the broken pawn structure IF I could keep them. That I seriously doubted. So - -		A horrible blunder dropping the rook. John said he just forgot about it. Correct was 36...K-K2 37 R-N5 preventing R-Q4ch, 37...R-B3 then possible 38 R-B5 RxP 39 R-B7ch K-Q 40 R-R7 R-B3 41 RxRP P-N4 42 P-Q5 and White should win.		Notes by the winner		Finally threatening 24 P-KB4	25 ... P-Q4
12 P-KN4!?		1977 Postal Game SICILIAN DEFENSE NAJDORF VARIATION		1 P-K4 P-K4 5 QNxP P-Q4	2 N-KB3 N-QB3 6 KNxP PxN	24 B-KN5 R-Q3 25 PxF PxF 26	B-R2 Q-Q2 27 P-KN4 N-B3 28
What else is left?		(W) John Jones	(B) R. Myhro	3 B-N5 P-B4 7 NxN QxQ4	4 N-B3 PxB	P-KB4 ?	White's King is now hopeles- sly exposed.
12 ... B-N3		1 P-K4 P-QB4 2 N-KB3 P-Q3 3 P-Q4	PxP 4 NxP N-KB3 5 N-QB3 P-QR3 6	This is the only playable line for Black.		28 ... N-K5 29 Q-K NxR 30	PxN R-K1 31 Q-Q2 P-Q5 32
Not 12 ... NxP or 13 B-K4!! and then 14 PxN. The immediate cap- ture 13 PxN loses to 13...BxP 14 B-K4 Q-R4!! and White can resign!		7 P-KR3 P-QN4? 7 N-Q5 NxP 8 Q-B3 9	N-B6ch NPxN 10 QxR B-QN2 11 Q-R7	8 P-QB4 Q-Q3 9 NxRPch ...		R-KB Q-B3 33 N-B4 BxN 34 RxR	Q-R8ch 35 K-B2 Q-N7 mate.
13 B-KB4 BxB 15 QxQ NxQ	14 QxB Q-K5 16 KR-K1 N-Q3?	Q-B2 12 P-QN4 N(4)-Q2 13 B-Q2 N-N3	14 NxP PxN 15 BxPch N(3)-Q2 16 0-0	Centennial Chess Club Tmt. BENKO GAMBIT		3 R-KB 33 N-B4 BxN 34 RxR	Q-R8ch 35 K-B2 Q-N7 mate.
Probably misplaced, better is N-KB3 but it certainly is not a losing move.		R-N1 17 P-N3 N-B3 18 Q-R4 N-Q5 19	QR-Q1 NxR 20 QxN B-B3 21 Q-R6 N-K4	Tempting is 9 Q-R5ch but after 9 ... P-N3 10 Q-K5ch QxQ 11 NxQch		7 P-B4 ...	An aggressive choice.
17 P-QR4 0-0-0 18 P-N4 ...		22 B-B4 N-B6ch 23 K-B1 Q-Q2 24	P-QR4 P-K4 25 B-K3 QxPch 26 K-K2	P-B3 and if 12 NxP P-QR3 wins.		7 ... P-N3	8 N-B3 B-KN2
I needed a win since I let an easy win blunder away in the 1st round. So I had to push and hope.		B-K5 27 Q-N5ch K-K2 28 Q-N8 Q-Q2	29 RxP QxR 30 B-B5 QxR 31 PxQ	Black is threatening N-N5		9 P-K4 BxB	10 RxR ...
18 ... P-QR3		N-Q5ch 32 K-B1 R-N3 33 R-N1 N-B3	34 R-N7ch Black Resigned.	Threatening NxP and RxQ so--		White is going to castle by hand.	10 ... QN-Q2
Here I saw an interesting pos- sibility which went as the game did. It was my only chance.		Centennial Chess Club Team #2 Pennsylvania FRENCH DEFENSE WINAWER VARIATION		24 QxR QxQ 34 P-KR4 P-KN4	25 N-B3 Q-R6 35 K-R3 P-N5ch	11 K-B2 0-0	Q-N3
19 P-QN5 RxFP 21 PxF P-QB4?	20 BxN BxB	2 P-Q4 P-Q4 6 PxB N-K2	3 N-QB3 B-N5 7 Q-N4 ...	26 RxN Q-N7 36 K-R2 Q-B3	27 R-K3 Q-Q7 37 K-N1 QxP	12 K-N1	Also possible is N-N3 fol- lowed by Q-Q2.
Not sure if I saw this or not at move 18, but it didn't stop my plan. My thoughts were 21 ...PxP 22 KR-N1 obtaining a superior pawn formation.		4 P-K5 P-QB4		28 R-N3? RxP 38 R-K3 P-N6	29 RxR Q-K8ch 39 K-B1 Q-R8ch	13 K-R1 KR-N1	14 Q-K1 Q-N2
22 N-K5!		The main line.		30 K-R2 QxR 40 K-K2 QxPch	31 R-B3 Q-K8 41 K-Q3 Q-B8ch	15 P-KR3 P-B5	16 N-Q4 N-B4
The point, if 22 ...KR-B1 23 P-N6 PxP 24 PxF K-N1 and Black seems completely bottled up. Also im- portant here was the psychologi- cal value.		7 ... Q-B2 11 Q-Q3 PxF	8 QxNP R-N1 12 P-KB4 B-Q2	32 R-N3? Q-K4 42 K-K2 QxN	33 N-Q1 P-R4 and Black won.	17 N-B6 N-Q6	18 Q-K2 N-R4
22 ... BxN 24 R-B5ch K-N1?	23 RxR PxF 25 P-N6! R-Q4	9 QxP PxB 13 NxP ...	10 N-K2 QN-B3	The Atlanta Doubles November 1978 ENGLISH OPENING		19 K-R2 NxR	20 QRxN QxP
26 PxF KR-Q1 27 R-B7 ...		There are many moves here Spassky played 13 B-K3 and Korchnoi an- swered with 13 ... P-Q5! Spassky then declined the pawn sacrifice, with 14 B-B2. RHM's French Defense gives 13 N-N3 as best.		(W) John Roberts (1359)		Sacrificing the exchange proves insufficient.	
With the threat of R-R7.		13 ... P-QR3 14 B-Q2 ...		(B) Nicholas Cox (1541)		21 R-B2 ...	Black overlooked this move.
27 ... R(4)-Q2 28 QR-QB P-KN3		14 B-K3 is more to the point.		MOVING? Be SURE to send in your new advance notice, well ten days anyway, thanks-Ed.		21 ... Q-R6	22 NxR BxN
Here White has the advantage,		14 ... N-R4 16 B-K2 0-0-0	15 P-KN3 N-B5	White should have played Q-Q2 winning outright.		23 R-B3 RxN	24 R(3)xR Q-R2
				28 ... R-N8		25 Q-B2 Q-R4	26 RxP R-N5
				29 Q-Q2 Q-R2		27 P-N4 N-B3	28 Q-K2 ...

30 Q-Q4 ...

R-B1 seems better

30 ... Q-R6
31 Q-B3 Q-R2
32 Q-Q4 Q-R4
33 Q-B3 Q-R2
34 R-B8ch K-N2
35 R-N2 Q-R5
36 P-N5 ...

Black must give up more material to keep his chances for the draw alive.

36 ... QxKP
37 PxN PxP
38 Q-Q2 R-K8
39 P-QR4 R-K6
40 R-QB2 QxPch
41 K-N1 Q-K4
42 P-R5 RxP
43 R-QR2 ...

Adjourned; Black sealed his 43rd move.

43 ... Q-R4

White had analyzed almost every variation except this one.

44 K-B1 Q-B6ch
45 K-N1 Q-R4
46 K-B1 Q-B6ch
47 K-N1 Q-R4

DRAW

The position has been repeated 3 times.

Olympiad 1978
Palermo, Argentina
PIRC-ROBATSCH DEFENSE
(W) Korchnoi
(B) Kavalek

1 P-Q4 P-KN3
2 P-K4 P-Q3
3 P-QB4 B-N2
4 N-QB3 N-KB3
5 B-K2 O-O
6 N-B3 P-K4
7 B-N5 P-KR3
8 B-R4 P-KN4
9 PxP PxP
10 PxN QxP
11 Q-Q2 B-K3
12 R-Q1 N-Q2
13 Q-K3 N-K4
14 NxN PxN
15 N-Q5 BxN
16 BxP KR-Q1
17 O-O B-B1
18 B-B4 B-Q3
19 R-Q3 K-R1
20 Q-R3 R-KN1
21 R-KB3 Q-K2
22 K-R1 R-N3
23 R-B5 QR-KN1
24 R-R5 K-R2
25 RxP(4) Q-N4
26 P-KN3 R-B3
27 B-K2 Q-Q7
28 B-N4 RxP
29 B-B5ch K-R1
30 RxPch K-N2
31 R-R7ch K-B1
32 B-K6! ...

32 ...PxP?? 33 RxRch and mate follows.

32 ... R-N2
33 R-R8ch K-K2
34 B-B8 RxRch
35 QxR Q-K6
36 B-B5 B-B4
37 K-N2 Q-Q7ch??

This is Kavalek's only loss. Had he played 37...P-QR3 it would have been an easy draw.

Arnold Denker

38 K-R3 B-B7
39 Q-N5 P-QB3
40 QxPch K-B3
41 QxQBch Resigns

Olympiad 1978
Palermo, Argentina
PIRC-ROBATSCH DEFENSE
(W) Romanishin
(B) Donner

1 P-K4 P-Q3
2 P-Q4 N-KB3
3 N-QB3 P-KN3
4 B-KN5 B-N2
5 P-B3 P-B3
6 Q-Q2 P-KR3
7 B-K3 P-QN4
8 B-Q3 QN-Q2
9 KN-K2 N-N3
10 P-QN3 P-QR4
11 P-QR4 P-N5
12 N-Q1 KN-Q2
13 P-B3 P-K4
14 PxNP PxNP
15 R-QB1 B-N2
16 O-O PxP
17 NxP P-QB4
18 N-N5 N-QB1
19 B-K2 R-R3
20 N-N2 P-R4
21 N-B4 N-K4
22 KR-Q1 NxN
23 BxN Q-K2
24 B-N5 Q-Q2
25 P-K5 BxKP
26 R-K1 Resigns

7 B-N5 P-QR3
8 N-R3 P-N4
9 BxN PxP
10 N-Q5 P-B4
11 BxP?! PxP
12 NxP R-QN1??

Black must prevent N-B7ch with 12 ...R-R2 13 NxR NxN 14 Q-B3 N-B3 15 O-O-B3 16 K-N1 PxP 17 QxP O-O and Black has the upper hand Peresipkin-Svesnikov SSSR 73, Informant 15 game 363--JEM.

13 N(N)-B7ch K-Q2
14 Q-R5 N-Q5
15 O-O K-B3
16 P-QN4 PxP
17 P-QB3 N-K3
18 P-N5ch K-N2
19 P-N6 K-B3
20 QR-N1 Q-N4
21 Q-K2 N-B4
22 P-N7 N-Q6
23 QxP N-B4
24 Q-QB4 RxP
25 RxR Resigns

White has Q-N5ch coming.

Olympiad 1978
Palermo, Argentina
SICILIAN DEFENSE
(W) Mestel
(B) Suba

1 P-K4 P-QB4
2 N-KB3 P-Q3
3 P-Q4 N-KB3
4 N-B3 PxP
5 NxP P-K3
6 B-K2 P-QR3

20 NxKP PxN
21 QxPch N-N2
22 B-N4 B-B1
23 B-R6 B-R5
24 P-KN3 N-B3
25 RxN RxR
26 NxRch BxN
27 QxB B-N2ch
28 K-N1 Q-N3ch
29 Q-B2 Q-B3
30 Resigns

Atlanta, Ga.
GIUOCO PIANO
(W) C Robinson
5th grade
(B) Chess Challenger
Level III-best

1 P-K4 P-K4
2 N-KB3 N-QB3
3 B-B4 N-B3
4 P-Q4 P-Q3
5 B-K3 NxKP
6 PxP NxKP
7 Q-Q4 P-KB4
8 B-B4 N-QB3
9 Q-Q5 N-N5??
10 Q-B7 mate

Chaturanga CC Champ.
August 20, 1978
(W) H. McFarland (C)
(B) Dennis Baluk (B)

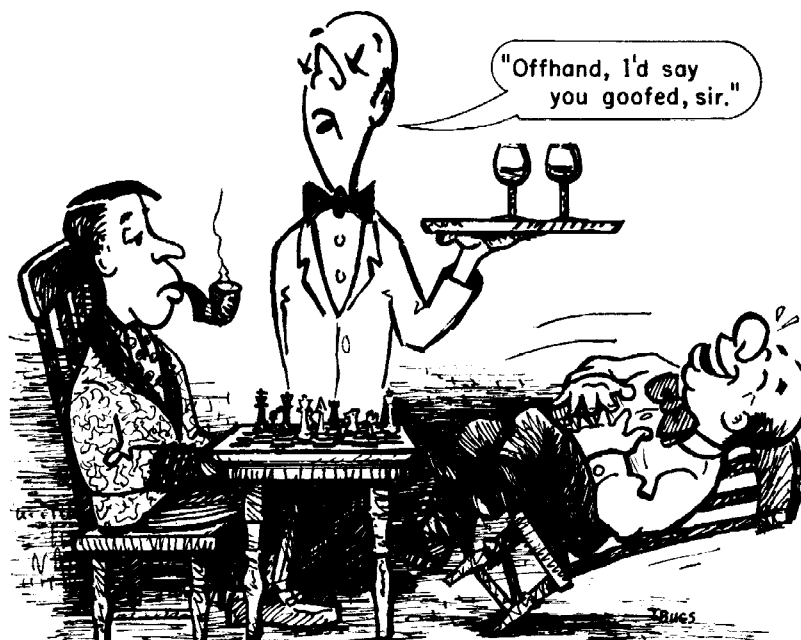
1 P-K4 P-K4
2 N-KB3 N-QB3
3 P-KN3 P-Q3
4 B-N2 P-B4
5 P-Q3 N-B3
6 B-N5 P-KR3
7 BxN QxB

21 P-N4 N-N3
22 Q-K3 Q-B5
23 N(R)-B1 QxQch
24 NxQ N-B5
25 B-B1 R-B1
26 K-R2 NxQP!
27 N-B5 N-B5
28 P-B4 K-Q2
29 R-R3 B-K2
30 R-QN3 P-B3
31 R-N1 P-R3
32 K-N1 R-B1
33 N-B3 B-B3
34 R-Q1 P-Q4
35 BxP BxP
36 PxP BxN
37 PxR R-B6
38 K-B2 P-K5
39 N-N1 P-K6ch
40 K-K1 R-B7
41 B-K2 B-B6ch
42 K-B1 BxNP
43 B-B3 R-B7mate

C3 Team Swiss #14
SICILIAN DEFENSE
November 25, 1978
(W) Otis Burgess (X)
(B) Dennis Baluk (B)

1 P-K4 P-QB4
2 N-KB3 N-QB3
3 B-N5 Q-N3
A rare variation.

4 N-B3 P-QR3
5 B-B4 P-Q3
6 O-O N-B3
7 R-K1 B-N5
8 P-KR3 B-R4
9 P-KN4 B-N3
10 N-Q5 NxN
11 PxN N-Q5
12 P-Q3 NxNch
13 QxN Q-B2
14 P-QR4 Q-Q2
15 P-R5 P-R4
16 P-N5 P-B3
17 P-B3 P-R5
18 P-Q4 PxQP
19 B-N3 O-O-O
20 PxP R-R4
21 B-R4 Q-B4
22 QxQ BxQ
23 B-Q1 R-R2
24 K-R2 PxP
25 BxP P-KN3
26 B-N4 BxB
27 PxR K-Q2
28 R-K6 R-B1
29 R-K2 R-B5
30 B-K3 B-N2
31 R-Q2 B-R3
32 P-N5 B-B1
33 R-R3 R-KB2
34 R-N3 K-B1
35 R-N6 R-KB4
36 P-N3 R-QB2
37 P-N4 RxQP
38 P-KB4 R-B3
39 RxR PxR
40 R-QB2 K-Q2
41 K-R3 B-N2
42 R-B4 R-N4
43 KxP P-Q4!
44 R-B2 RxNP
45 K-N4 BxP
46 B-Q2 R-N7
47 RxR BxR
48 P-B5 PxPch
49 KxP P-B4
50 P-N6 P-K3ch
51 K-N4 B-N2
52 K-B3 P-K4
53 Resigns



Olympiad 1978
Palermo, Argentina
SICILIAN DEFENSE
(W) Nunn
(B) Bhend

1 P-K4 P-QB4
2 N-KB3 N-QB3
3 P-Q4 PxP
4 NxP N-KB3
5 N-QB3 P-K4
6 N/4-N5 P-Q3

7 O-O B-K2
8 P-B4 O-O
9 Q-K1 Q-B2
10 K-R1 P-QN4
11 B-B3 B-N2
12 P-K5 N-K1
13 Q-N3 N-Q2
14 P-QR3 N-N3
15 N-K4 R-Q1
16 P-B3 N-Q4
17 B-Q2 P-N3
18 P-B5 QxP
19 PxNP RxP

8 QN-Q2 B-K3
9 O-O P-B5
10 R-K1 P-KN4
11 P-KR3 P-KR4
12 N-R2 B-K2
13 P-QB3 O-O-O
14 P-QN4 QR-B1
15 P-QR4 PxP
16 PxP B-Q1
17 R-KB1 Q-N2
18 Q-K2 N-K2
19 RxR QxR
20 P-R5 P-R5

Cartoon
by
Tom Bagby

1 P-K4 P-Q4, 2 PxP. This opening is called the Center Counter Defense in English speaking countries and the Scandinavian Defense in the rest of the world. A better name would be the American Defense because it has been quite popular in this country since the 1940's. 2...N-KB3 is called the Marshall Gambit, the November issue of The Chessman and CLAR each had three games with this line.

2...QxP allows White a free kick with 3 N-QB3 followed by 4 P-Q4. With 2...N-KB3, Black seeks to avoid this loss of time by recapturing with the Knight yet maintaining freedom of development for his Bishops.

After 2...N-KB3 the move that throws sand in Black's gears is 3 B-N5ch which threatens to hold the Pawn under favorable conditions. The immediate attempt to hold the Pawn with 3 P-QB4 P-B3, 4 PxP NxP gives Black a lot of play. Most opening books do not give the best lines for White after 3 B-N5ch, the following are suggested:

The Main Line
3 B-N5ch B-Q2(!) or "E"
4 B-B4 B-N5
5 P-KB3 B-B1 or "D"
6 N-B3 QN-Q2
and White has 2 good lines
not in ECO, but given below
as "B" and "C".

B
7 N-K4 N-N3
8 NxNch N-PxN
9 B-N3 NxP
10 P-Q4 R-KN1
11 P-N3 P-B3
12 Q-Q3 White has the
upper hand.

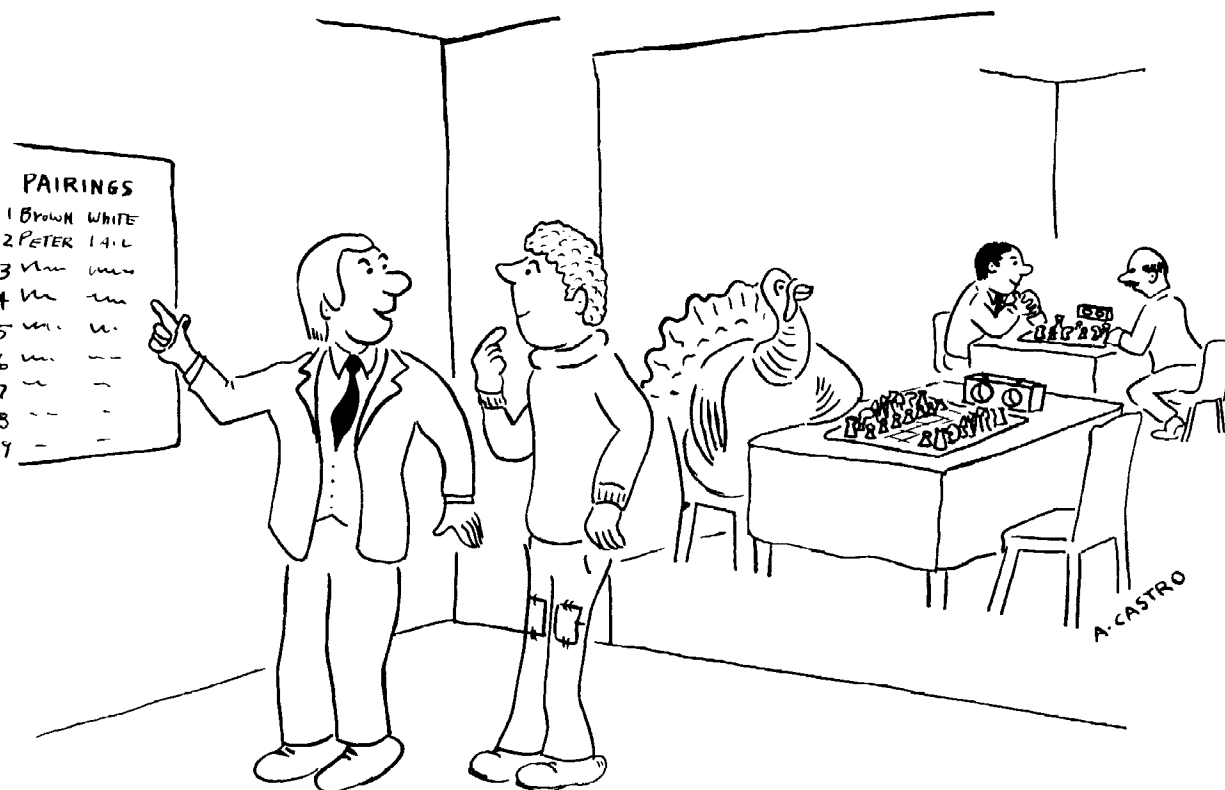
C
7 P-Q4 N-N3
8 B-N3 QNxP
9 NxN NxN
10 P-QB4 and White
has the upper
hand.

D
5 ... B-B4
6 N-B3 QN-Q2
7 Q-K2 N-N3
8 B-N3 Q-Q2
9 P-Q6! PxP
10 P-QR4 P-QR4
11 P-Q3 B-K3!
12 BxB QxB
13 QxQ PxQ
14 N-N5 K-Q2
so far ECO
15 P-QB4 P-Q4
16 B-K3 N-B1
17 B-Q4! White has the
upper hand.

E
4 P-QB4 QN-Q2
5 BxNch P-QR3
QxB
Now, White has the choice
of keeping the Pawn with
"F" or giving it back with "G".

F
6 P-Q3 P-QN4
7 N-KB3 White has the
upper hand.

G
6 N-QB3 P-B3
7 PxP QxP
8 Q-B3 QxP
9 KN-K2 and then
10 P-QN3 and White has
the upper hand.



I BELIEVE YOUR OPPONENT IS A REAL TURKEY!

CLEMSON INVITATIONAL, NOV. 1978, SICILIAN DEFENSE, W- Stan
Vaughan (2021), B- Peter Hudson (2032).

1 P-K4, P-QB4 2 N-KB3, P-Q3 3 P-Q4, PxP 4 NxP, N-KB3 5 N-QB3,
P-QR3 6 B-N5, Q-N3 7 N-N3, QN-Q2 8 Q-Q2, P-R3 9 B-K3, Q-B2 10 B-K2,
P-QN4 11 P-QR3, B-N2 12 P-B3, P-N3 13 O-O, B-N2 14 K-R1, N-K4 15
QR-Q1, N-B5 16 BxN, PxP 17 N-Q4, N-Q2 18 Q-B2, O-O 19 Q-R4, P-KN4
20 Q-R3, N-K4 21 P-B4, B-B1 22 Q-N3, PxP 23 BxP, N-N3 24 B-K3, Q-N2
25 N-B5, BxN 26 PxP, QxP 27 N-Q5, P-K3 28 PxN, PxN 29 PxFch, RxP 30
RxR, KxR 31 QxP, Q-K4 32 R-Bch, K-N 33 Q-QB6, R-KB 34 RxR, BxR 35
Q-N6ch, K-R 36 B-N, P-QR4 37 Q-N4, Q-K5 38 B-Q4ch, K-R2 39 Q-Q7ch,
B-K2 40 P-B3, K-N3 (In Ohio, the early development of the King, is
called the Budweiser effect, you know " Here comes the King here
comes the Big Number 1" not so much the losing move as the losing
idea) 41 Q-K8ch, K-B4 42 Q-B7ch, K-N4 43 Q-N7ch, K-R4 44 P-R3,
Q-K8ch 45 B-N, Q-K5 46 P-QR4, B-R5? 47 B-K3! B-N4 48 Q-B7ch, Q-N3

49 Q-B3ch, K-R5 50 B-B2 Checkmate.

CLEMSON INVITATIONAL, NOV. 78, DUTCH DEFENSE, W-Hudson, B-Vaughan
1 P-QB4, P-KB4 2 P-K3, N-KB3 3 P-Q4, P-K3 4 N-QB3, B-K2 5 KN-K2,
O-O 6 N-B4, P-Q3 7 B-K2, Q-K 8 N-R5, QN-Q2 9 NxNch, NxN 10 P-Q5,
P-K4 11 Q-B2, P-QR3 12 P-K4, P-B5 13 P-QR4, Q-N3 14 R-KN, N-N5 15
BxN, BxB 16 P-B3? BxP 17 Q-Q3, BxNP 18 Q-Q2, P-B6 19 Q-KB2, B-R5!
20 QxB, P-B7ch 21 QxP, RxQ 22 KxR, R-Bch 23 K-K, Q-N5 24 B-K3, Q-B6
25 K-Q2, Q-R6 26 QR-K, R-B8 27 R-K2, RxR 28 BxR, B-B8 29 R-B2, BxP
30 N-K2, Q-Q6ch 31 K-B, QxKP 32 N-B3, Q-K8ch and White Resigns.

VERY LATE NEWS (Pa.)

Penn State Winter Tornado #1,40/1 CCA TOURNAMENTS in PHILADELPHIA
Jan 27, 1979, under 1800 only, 4-SS APR 13-15 ATLANTIC OPEN
Keith Kuhn, 109 Shaw Ave. Lewistown Pa. 17044

CCA - NEW YORK

1978

RUY LOPEZ

EXCHANGE VARIATION

(W) Jeffrey Kastner (M)
(B) Westerinen (GM)

1 P-K4 P-K4
2 N-KB3 N-QB3
3 B-N5 P-QR3
4 BxN QPxN
5 O-O B-Q3
6 P-B3 N-K2
7 P-Q4 P-B3
8 Q-N3 N-N3
9 B-K3 Q-K2
10 QN-Q2 P-N4
11 P-QR4 B-K3
12 P-Q5 PxP
13 PxP B-B
14 PxP R-QN
15 P-B4 PxP
16 P-B5 BxP
17 BxN QxN
18 KR-B Q-N3
19 R-B6 Q-N2
20 QR-QB B-Q2
21 RxB Q-N3
22 P-Q6 QxP
23 N-K4 Q-K3
24 Q-R3 N-B5
25 R-Q P-N5
26 Q-R7 R-Q
27 P-R3 N-K7ch
28 K-R2 N-Q5
29 NxB PxN
30 RxB Q-K4ch
31 P-B4 Resigns

FLORIDA EXPERTS

May 1978

DUTCH DEFENSE

(W) Alfonso Ruiz (2070)
(B) Bruce Frink

1 P-QB4 P-KB4
2 N-QB3 N-KB3
3 N-B3 P-K3
4 P-Q4 P-QN3
5 P-KN3 B-N2
6 B-N2 B-K2
7 O-O O-O
8 P-N3 N-R3
9 B-N2 P-B4
10 P-Q5 PxP
11 PxB P-Q3
12 Q-Q3 P-N3
13 N-KN5 N-B2
14 N-N5 B-R3
15 P-QR4 R-B
16 Q-Q2 BxN
17 PxB N-N5
18 N-K6 NxB
19 PxB Q-B2
20 R-R4 Q-N
21 B-Q5 KR-K
22 RxB!! PxR
23 Q-R6

WORLD INSANITY

Rochester, New York
August 5, 1978

TWO KNIGHTS DEFENSE

(W) Mernan (1925)

(B) Stan Vaughan (X)

1 P-K4 P-K4
2 N-KB3 N-QB3
3 B-B4 B-K2
4 P-Q4 PxB
5 NxB N-K4
6 B-N3 P-Q3
7 N-B3 N-KB3
8 P-B4 N-N3
9 B-K3 N-N5
10 B-Q2 N-B3
11 B-K3 O-O
12 Q-Q2 N-N5
13 B-N1 B-Q2
14 N-B3 P-QR4

15 O-O-O P-R5
16 B-B4 P-R6
17 P-QN3 B-K3
18 B-Q3 B-Q2
19 P-R3 N-B3
20 P-KN4 B-B3
21 P-N5 N-R4
22 B-R2 P-B4
23 N-Q4 N(N)xP
24 B-B4ch K-R1
25 K-N1 PxB
26 NxB PxB
27 QR-KB BxB
28 Q-Q1 P-Q4
29 B-K2 NxB
30 QxN RxBch
31 RxB N-B3
32 Q-N2 B-R3
33 B-K5 Q-K2
34 Q-N3 R-KB1
35 BxB N-K1

Black won on time

WORLD INSANITY

Rochester, New York
August 5, 1978

SICILIAN DEFENSE

(W) Stan Vaughan (X)

(B) Castro (A)

1 P-K4 P-KN3
2 P-Q4 B-N2
3 N-QB3 P-QB4
4 B-K3 Q-N3
5 N-Q5 Q-Q1
6 R-N1 P-K3
7 N-QB3 PxB
8 BxB N-KB3
9 P-K5 N-N1
10 N-N5 N-QB3
11 N-Q6ch K-B1
12 Q-Q3 Q-K2
13 B-B5 P-N3
14 B-R3 BxB
15 NxB QxB
16 QxQ Resigns

LOWER BUCKS COUNTY INTER-

SCHOLASTIC CHESS LEAGUE

November, 1978

SICILIAN DEFENSE

NIMZOVICH VARIATION

by transposition

(W) Nancy Walzack (1374)

(B) Len Speakman (1096)

1 P-K4 P-K3
2 N-KB3 N-KB3
3 P-K5 N-Q4
4 P-Q4 P-QB4
Better is P-Q4
Transposing to the Nimzo-Sicilian.
5 B-Q3 ...

Passive; better is N-B3

5 ... N-QB3
6 P-B3 N-N3

Unnecessary; P-Q3 is better attacking the center.

7 O-O P-Q4
8 PxB BxB
9 PxB BxB
10 B-KB4 N-Q2
11 B-QN5 Q-N3
12 P-QR4 P-QR3
13 BxB PxB

QxN keeps Black's Q-side pawns together.

14 P-QN4 B-K2
15 N-R3 P-QB4

16 N-B4 Q-R2
17 N-Q6ch BxN?
K-B1 keeps Black alive
18 QxB PxB
19 PxB QR-N1
20 N-K5 R-N3
21 N-B6! N-B3?

Loses outright, RxN is forced.

22 Q-Q8 Checkmate

Notes by Gary Connors.

RUY LOPEZ

(W) Dave Watkins

(B) Lana Pierce

1 P-K4 P-K4
2 N-KB3 N-QB3
3 B-N5 P-QR3
4 B-R4 N-B3
5 O-O P-QN4
6 B-N3 B-N2
7 N-B3 N-QR4
8 P-Q4 NxB
9 RxBN NxB
10 NxB BxB
11 R-K1 P-Q4
12 NxB P-KB3??
13 Q-R5ch P-KN3
14 NxB! KR-N1
15 N-K5ch K-K2
16 N-B6!!ch Resigns

SIMULTANEOUS EXHIBITION

Pennsylvania, 1978

VIENNA GAMBIT

(W) T Costigan Even Moves

(B) Howard Bogus (1255)

1 P-K4 P-K4
2 N-QB3 N-QB3
3 B-B4 N-KB3
4 P-Q3 B-B4
5 P-B4 P-Q3
6 N-KB3 N-KN5
7 Q-K2 B-B7ch?
8 K-Q1 B-QB4
9 R-B1 N-Q5
10 NxB BxB
11 P-KR3 P-KR4!

If 12 PxB BxP!!

12 P-B5 N-B3
13 B-KN5 BxB
14 PxB NxB!!

This is the key move the Knight goes from KB3 to KB4 in 4 moves, to defend the QP.

15 BxB NxBch
16 K-Q2 NxB
17 BxB N-N6
18 R-B3 NxB
19 QR-KB1 B-Q2
20 P-N4 PxB
21 PxB R-R7ch
22 R(1)-B2 RxBch
23 RxB R-B1!
24 B-R5 N-R3
25 P-N5 N-B4
26 B-N4 K-K2
27 R-K2 P-B3

Otherwise RxBch

28 PxBch PxB
29 R-R2 K-Q1
30 B-Q5 K-B2
31 R-R7 R-K1
32 BxB! R-K2
33 RxB NxB

Black has passed pawns.

34 B-N2 B-B3
35 B-KR3 N-Q4
36 B-R5ch K-N2
37 B-Q8 B-K1
38 B-N2 K-B1

White tries to get P-B4 in.

39 B-R5 N-B5
40 B-K4 B-B2
41 P-B4 P-Q4
42 B-B5ch B-K3
43 BxBch NxB
44 PxB N-B5
45 P-Q6 K-Q2
46 B-N4 N-Q4
47 B-B5 P-R3
48 K-B2 P-B4
49 K-Q2 N-B3
50 K-K3 N-K1
51 P-Q4 PxB
52 KxB NxB
53 K-K5 N-K5
54 B-N4 N-N6
55 K-B4 N-K7ch
56 KxB K-B3

Equal

57 K-K4 K-N4
58 B-Q2 K-B5
59 K-K3 N-B6
60 P-R3 N-N8
61 B-N4 K-N6?

61...NxB ends White's winning chances.

62 K-Q4 NxB
63 BxB KxB=

Draw; White plays K-B3 and keeps the Black K on the QR-File.

FLORIDA EXPERTS

CANDIDATES SECTION

May 1978

SICILIAN DEFENSE

O'KELLY VARIATION

(W) Tom Stievs

(B) Charles Lang (1737)

1 P-K4 P-QB4
2 N-KB3 P-QR3

To prevent 3 P-Q4, White has 3 P-B4!, P-QN4!

3 P-Q4 Anyway

3 ... PxB
4 NxB N-KB3
5 N-QB3 P-K4
6 N-B3?

Much better is 6 N-N3 B-N5

7 B-Q2 O-O 8 B-Q3 BxB 9 BxB P-Q4 10 PxB QxP=

6 ... B-N5
7 B-Q3??

7 B-Q2 O-O 8 B-Q3 BxB 9 BxB P-Q4 10 PxB QxP is equal.

7 ... P-Q3??

7 ... P-Q4!! 8 PxB P-K5 9 Q-K2 O-O 10 BxB NxB (is a Bust).

8 B-Q2 B-K3
9 P-QR3 BxB
10 BxB QN-Q2
11 O-O Q-B2
12 Q-K2 R-QB1
13 KR-K1 N-B4

14 QR-Q1 O-O

15 N-N5 N-R5

16 NxB PxB

17 R-N1 NxB

18 PxB Q-B4

19 P-R3 QxBP

20 RxB R-B3

21 R(1)-N1 R(1)-B1

22 R-R7 R(1)-B2

23 R-N8ch K-B2

24 R(R)-R8 R-B1

25 RxB RxB

26 RxB QxR

27 BxB Q-B6

28 P-QR4 Q-R8ch

29 K-R2 QxP

30 B-Q3 Q-Q5

31 P-N4 P-N4

32 P-R4 P-R3

33 PxB PxB

34 P-KB3 Draw

FRANKLIN-MERCANTILE CC

SUPERQUADS Oct. 14 1978

KINGS INDIAN DEFENSE

BARCZA SYSTEM

(W) Homer Sharp (1072)

(B) Kinsler (1680)

I felt like an Expert after beating Bobby Fischer, difference in ratings are the same. I played the first 6 moves of the Barcza System recommended by Larry Evans in The Chess Opening for you as a universal system for White. However, my opponent, Mr. Kinsler, did me one better and used a double fianchettoed B transposing into a Samisch variation.

White's theme was simplification by exchanging material and hoping for a draw. White's play is passive to avoid blunders. Notes by the winner.

1 N-KB3 N-KB3
2 P-KN3 P-QN3
3 B-N2 B-N2
4 O-O P-N3
5 P-Q3 P-Q4!
6 QN-Q2 P-QB4
7 R-K1 B-N2
8 P-K4??

White assumed an even exchange

8 ... PxB
9 NxB NxB
10 PxB QxQ
11 RxB BxB

Oops, I dropped a pawn.

12 P-QB3 P-K3
13 B-B4 O-O
14 R-Q2 N-B3
15 R-K1 B-Q4
16 N-R4 QR-Q1
17 P-QR3 P-K4
18 B-K3 R-Q2
19 B-R3 R(2)-Q1
20 B-N5 P-B3
21 B-K3 B-N6
22 RxB RxB
23 R-K2 R-Q8ch
24 K-N2 B-B5
25 R-Q2 B-B8ch
26 K-B3 RxB
27 B-K6ch K-B1
28 BxB P-B4

Black threatens mate.

29 BxB PxB
30 NxB B-B3
31 N-K3 B-R6
32 N-Q5 B-N2
33 N-B7 K-K2
34 N-Q5ch K-K3

35 N-K3 and Black's flag fall, 1-0 on time.

"Report from Buenos Aires" - Donald Schultz

(XXIII FIDE Chess Congress - Oct. 25 - Nov. 12, 1978)

I was fortunate to be asked to serve as U. S. FIDE Counselor to the XXIII FIDE Congress in Buenos Aires, Argentina. Together with George Koltanowski and Gary Sperling, we comprised the official U. S. delegation. Details of the meetings will appear in CHESS LIFE. However, I would like to share some of my experiences at these meetings with you. I will not include a comprehensive summary of these meetings but I will highlight some of the aspects of them that were of most interest to me. First, I will briefly outline the FIDE organization and meeting agenda. I will then cover the presidential elections, highlights from the General Assembly meeting and close with some comments on Victor Korchnoi's issues on his match with Anatoly Karpov.

FIDE Organization

FIDE does not lack organizational structure. Its President Dr. Max Euwe is located in the Netherlands as is the FIDE business office. The office is managed by the General Secretary who at present is Ms. Ineke Bakker, a super efficient secretary who has the admiration and support of all factions within FIDE. There are four Deputy-Presidents who together with the President and four additional elected members comprise the FIDE Bureau. The Bureau is a relatively small group for which most sensitive matters are referred. They also meet from time to time and generally plan and govern FIDE. FIDE is also divided into various zones, each having an elected Zonal President. Zone 5 includes only the United States. Therefore, the U. S. Zonal President is appointed by the USCF policy board. The current U. S. Zonal President is Gary Sperling. He is responsible for all FIDE related events and activities in the U. S. Additionally, as Zonal President he is a member of the FIDE Central Committee. This Central Committee is a somewhat larger one than the FIDE Bureau. It generally meets only during a FIDE Congress. It provides recommendations to the General Assembly. If the General Assembly were not to meet during a particular year, then the Central Committee would and it would address all those topics the General Assembly normally addresses. The Central Committee includes all members of the Bureau plus all Zonal Presidents plus the World's current male and female champions plus about seven additionally elected members.

The most important group of all is the General Assembly. This includes one permanent delegate per member nation. Currently, there are about 105 member nations. They meet once a year. In the past they often met less frequently. They vote on all FIDE matters including endorsements of Grandmaster candidates, international master candidates and FIDE arbiters.

In addition to the organizational structure, there are various permanent committees. The U. S. has representation in all the important committees. The following lists the U. S. FIDE representatives:

Gary Sperling	- Permanent Delegate Zone 5 President
George Koltanowski	- Counselor
Don Schultz	- Counselor Commission on Chess (Developing Countries)
Arpad Elo	- Qualifications Commission (Sec.)
Issac Kashdan	- Rules Commission
Bill Lombardy	- Commission on Publication and Information
Pearle Mann	- Commission on Ladies' Chess

Election of the FIDE President

Dr. Euwe was not running for a third term. There were three candidates, Rabell Mendez (Puerto Rico), Svetozar Gligoric (Yugoslavia) and Fridric Olafsson (Iceland). Mendez was the favorite. Gligoric was the second choice and Olafsson was the dark horse. It is very important to U.S. Chess that we elect a strong FIDE President sympathetic to our interest. Consequently we spent a great deal of time, discussing the presidential election with each of the candidates. Gary and I, in fact, held separate interviews with each of them in my hotel room.

Each candidate was completely and honestly convinced he had the election wrapped up. Rabell had the endorsement of F. Campomanes of the Philippines and Dr. Ebigwei of Nigeria. These two very strong leaders controlled substantial votes; Campomanes, most of Asia, and Dr. Ebigwei, most of black Africa. Additionally Rabell had the support of Libya and other Arab countries. His sponsor, Rafael Tudela, President of the Hideca Oil International of Venezuela, provided the leadership in Central and South America. Rabell, therefore, had the support of most of the third world. He also was a very able candidate. He had far more experience in FIDE and chess organization than the other two. He impressed me as being the strongest individual of the three. Furthermore, I met Rabell in 1963 in Boston and can attest that he is a fine person. However, his candidacy had several drawbacks. He was perhaps too overconfident of victory and did not make us feel he wanted our support. He intended to move the FIDE office to Puerto Rico. This had the very definite disadvantage of causing FIDE to lose the services of Ms. Bakker. Also, Rabell's backing consisted primarily of individuals who generally take opposite sides with the U. S. viewpoint. Our grandmasters were strongly opposed to Rabell's candidacy, too. Rabell's campaign included a deluxe campaign book in multiple languages which was distributed to the delegates, as well as campaign pins and briefcase folders. I believe Rabell lost the election because of overconfidence and because he had no second ballot strategy. The voting rules state that if no candidate receives a majority of the votes on the first ballot then the bottom candidate is eliminated and a second ballot would take place.

Svetozar Gligoric clearly had the most charisma of all the candidates if not all the Congress attendees. If personality were the sole criteria, he would have won easily. Gliga is as fine a person as you would want to meet. He had the total support of Eastern Europe. He had the support, too, of the more moderate Arab countries as well as some scattered votes in Asia. His campaign was personally low key plus a major support effort by Yugoslavia. A truly deluxe campaign booklet in five languages was distributed to the delegates. The Yugoslavian Embassy hosted a cocktail party in Gligoric's honor. Yugoslavian embassies lobbied for him. This was particularly helpful in the moderate Arab countries. However, Gligoric was not our choice for several reasons. First, he was a one issue candidate. The theme of his campaign totally centered around bringing Bobby Fischer back to chess. Beyond this his ideas were sketchy and not thought out. Also, the question of his independence was always there. Most important, however, there was a better candidate.

Fridric Olafsson was from the outset the most appealing of all the candidates. However, we held up our endorsement until we had fully considered the others. Fridric's views and opinions coincided with ours in almost all cases. He agreed to retain the FIDE office in Amsterdam. Also, he sought Fischer's return to chess. He was easily accessible to Gary and I during the congress; more so than the other candidates. He wants strong FIDE participation by the U. S. His campaign manager, Gudmundur Thorisson was the man primarily responsible for holding the Fischer/Spassky match together at Reykjavik. Fridric had the support of western Europe and the U. S. He made a major breakthrough versus Rabell in South America securing six key South American votes.

His staff spent a great deal of time with both Rabell's solid supporters and Gliga's solid supporters. Clearly, he had a good second ballot strategy.

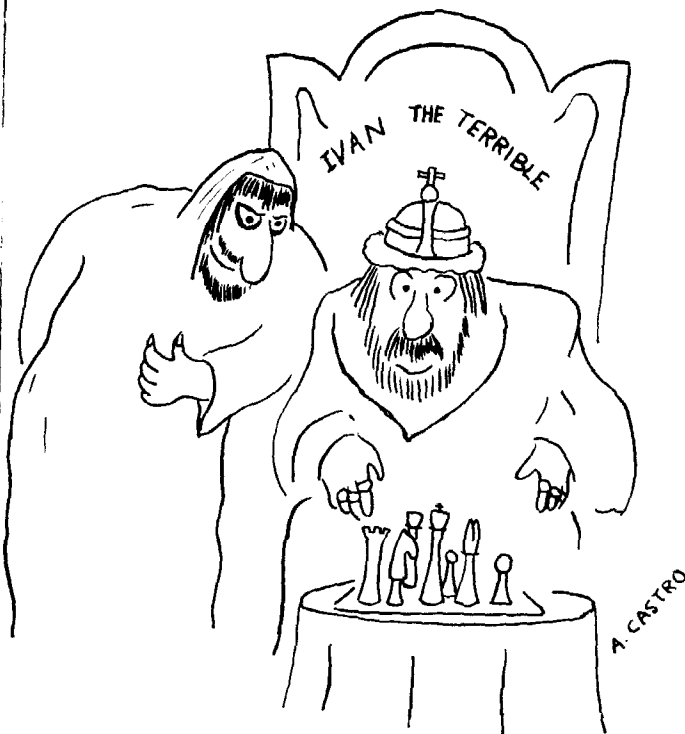
<u>First Ballot:</u>	R. Mendez - 31 F. Olafsson - 30 S. Gligoric - 29
<u>Second Ballot:</u>	F. Olafsson - 57 R. Mendez - 34

The U. S. has an excellent friend as President of FIDE and FIDE has an excellent president.

GENERAL ASSEMBLY

Ninety-two countries attended. Simultaneous language translations took place from all major languages into English, French, Spanish and German. About 200 delegates and counselors attended the meetings that lasted about a week. Major subjects addressed were:

- (1) Election of Officers
- (2) Karpov/Korchnoi Match Issues
- (3) Credentials—There were complicated issues concerning the correct representatives from Venezuela and Ecuador.
- (4) Admission of Uganda into FIDE



QxN AND IF PxQ . CUT HIS HEAD OFF.!

- (5) Endorsement of Qualification Committee recommendations for Grandmaster, International Master, FIDE arbiters, etc.
- (6) Votes on various miscellaneous issues—some were very important if allowed to pass.

I must say I was shocked at the extent international politics play in these meetings. Most delegates want to downplay them but they often cannot. This includes the U. S. Let me give an example: Libya and some other countries are pushing for participation in FIDE by more and more African countries. We generally support this. However, the motives of Libya are not clear. There is a danger that Israel could be thrown out of FIDE if enough anti-Israel votes are put together in the General Assembly. If this happens, it could force the U. S. and some other western nations to quit FIDE. It would be the beginning of the end for FIDE. Consideration to this type of thing can never be forgotten.

I mentioned above the credentials issue. At first, you would think it easy to decide between two groups both contending they represent their country's federation. Not so easy. On the one hand, Ecuador had a group that always represented them and had good relations with FIDE. On the other hand, the second group had a letter from their government stating that as a result of a new law (a major national sports re-organization) they were the correct representative group. They were backed by their country's Ambassador who made a presentation to the central committee of FIDE. The first group retorted that the courts in Ecuador are the highest authority and that they had a court order restraining the second group. Back and forth went the arguments. In the end, the second group won a close central committee vote.

There were other critical votes that did not go over in the landslide fashion you would expect. Libya had put forth a proposal that would make it mandatory for the FIDE President's country to fund all costs of the business office. This, of course, would preclude a president-to-be coming from any but a very few countries. It would also allow the host country to exert influence in FIDE. This motion, of course, was defeated but not by as great a margin as I would have expected. Many otherwise rational delegates supported Libya in this absurd proposal.

The delegates themselves were interesting and colorful. The Russian delegation was led by Yuri Averbach. Yuri is an open person. Gary Sperling and he became good friends exchanging gifts with one another. On all but a few key national interest items the Russians generally shared our viewpoint. Sevastianov Vitale, their counselor and president of the USSR Chess Federation, is a former cosmonaut. He always wore his two hero medals he received from Brezhnev. He offered to buy me a drink, a Soyuz-Apollo cocktail. It was designed to put you in orbit (25% vodka, 25% gin, 50% brandy). No thanks, I declined.

F. Campomanes, FIDE Deputy President, delegate from the Philippines, was one of the more impressive and dynamic participants. His speech against Korchnoi's issue in the World Championship match was truly eloquent. He graduated from Brown University in the U. S. Unfortunately, on almost all issues he was on the opposite side of the U. S. He was usually supported by Lim Kok Ann of Singapore and Dr. Ehiwei of Nigeria, both powerful voices in the Assembly. Generally, counterbalancing their arguments were Gary Sperling, David Levy and Kevin O'Connell.

Korchnoi's Complaint

The major issue facing the general assembly was the Korchnoi Complaint on the 32nd game of his match with Karpov. This will be detailed in CHESS LIFE and many other chess magazines. I would, however, like to give you my net of it based upon hearing all the arguments presented to the General Assembly.

Clearly the Russians attempted to distract Korchnoi. They violated prior agreements and had Dr. Zoukhar sit in one of the front rows. His objective had to be to disturb Korchnoi. They exerted influence to have Korchnoi's two guru assistants banned from Baguio City just prior to the crucial 32nd game. I firmly believe they should be censured for this behavior.

However, did this in fact force Korchnoi to lose the 32nd game? I think not. Victor Korchnoi did not know Dr. Zoukhar was seated in one of the front rows during the 32nd game nor did he know the fate of his gurus. His seconds very wisely hid this information from him. He made his protests at the conclusion of the game rather than before it. I therefore do not think his protest was valid and agree with the FIDE rulings that the game be declared finished and the match over. FIDE is still investigating the conduct of the Russians during the match.

You will read about the matters such as the cashing of the check. Even the Swiss lawyer presenting Korchnoi's protest on behalf of the Swiss Chess Federation admitted these to be side issues.

Korchnoi had another protest. He had circulated a petition requesting Russia to let his family leave the country. He presented his case to a post-General Assembly meeting. The Iron Curtain countries had left. I must say I was impressed by his sincerity and felt sorry for him. Both President Ewe and President-Elect Olafsson were very sympathetic to him. They would personally sign his petition. They had to consider their positions, however, before making any official statement.

Miscellaneous

In conclusion, just a few additional remarks. Midway during the meetings, a rumor developed that Korchnoi planned to move to Georgia, U. S. A. "Not true", said Victor when I asked him. But he added, "Someday, maybe". He has been to Georgia, has friends here and perhaps, someday, yes.

I took my chances at poker with Walter Brown, Bill Lombardy, David Levy, Kevin O'Connell and other known chess playing poker players. This was good since the results helped defray some of my expenses. Levy, however, impressed me as the outstanding player of the group and I would gladly trade my winnings with him.

Tony Saidy and Pal Benko did superb jobs as captains of the Women's and Men's teams. Saidy, in particular, impressed me as hard working and commanding the respect of our Women's team. I warned our women that one of them would have to give way to Georgia's Allison Bert at the next Olympiad.

The Cuban team wants to tour the U. S. next year and negotiations are under way. I have their promises that if they do they will insist on including Atlanta on their itinerary.

A REVIEW:
CompuChess, The Second Edition
by Bill Dodgen

Several weeks ago I received some material in the mail advertising CompuChess, Second Edition, an updated version of DataCash System's original chess computer which was offered on the market in October of 1977.

Frankly, my initial reaction to this material was one of skepticism, and yes, perhaps even a little resentment at what I thought to be but another case of "hype-advertisement" directed at the unsuspecting chessplayer. In fact, I wrote a rather lengthy letter to Larry Borland, Contract Administrator for DataCash, in which I outlined my doubts in some detail. After the exchange of several letters I decided to send for a CompuChess, Second Edition, and subject it to my own thorough evaluation. I was surprised at the results, and quite pleased.

The unit operates on six selective levels of play, as did Edition One, but substantial improvements in response time adds an additional level of practical over the board play on the updated version. Level One is exactly as stated, elementary, and has instantaneous response factor. It is designed for players with a very basic knowledge. Level Two is a little more advanced, with a 7-10 second response factor, and is designed for a practiced beginner. Level three, with a 10s-9 minute response factor, is for what is described as "the average player". Level Four, with the same response time as Level Three, is advertised as being for the over average player. Level Five is described to be for the "expert player" and has a response time of 2-9 minutes. This is the highest practical level for over the board play, as one game will take three or more hours. Level Six, due to a response time of up to 9 hours, is designed to work problems such as mates in two or postal moves, and not over the board play.

If there is an element of misunderstanding about CompuChess, it is in their use of the terms "average", "above average," and "expert". It must be understood that these terms do not correspond to those of a tournament player that revolves around the USCF Rating System. For example: the average USCF tournament player is rated at 1370-1380, but this is not the playing ability of level 3. Likewise the machines Expert level 5 does not by any stretch of the imagination indicate a playing strength of 2000. Therefore, we must accept these as only relative terms in respect to a non-tournament chess player. Sometimes we are too quick to forget that the average chess player is not the average USCF chess player. The average player is a general term while the average USCF player is a specific term. With only about 50,000 members in the USCF, and with the Harris Poll estimate of 12-15 million chessplayers in the U.S., it should be obvious that a USCF player rated 1400 may be an "expert" against the whole rather than the part.

Tournament players are always looking for a chess computer that can give them competition equal to their own rating and then some. But let us keep things in their proper perspective. At present, and according to Mr. Borland, for sometime in the future, compact chess computers are not designed to play tournament chess. They are intended as a teaching aid to the beginner and the novice, and as a chess companion for shut-ins and people who live in sparsely chess populated areas. They have to produce a product at a reasonable price that will appeal to the masses. Computers are on the market with chess programs that are of tournament caliber, but they are priced way beyond the means of most people.

I undertook the task to review CompuChess Second Edition not just from a viewpoint of playing ability, but from its more important function as a teaching aid. I had several club players who were not USCF members play against the unit on Level Four. The machine won about 75% of the games played, and it did the same with players rated below 1250. Level Five played on even terms with those rated up to 1300-1350 but fell rapidly as its opponents reached the 1400 range. However, it could be programmed to become more effective against stronger players. For example: a book position such as would occur after the tenth move of a standard variation of the French Defense could be entered and on Levels 4 and 5 the machine would prove quite an opponent, enough so that the user had better know more than a little about the game they programmed the unit to play. Stronger players should utilize this method, as the weakness of the compact chess computers is more evident in the openings than in any other phase of the game (due, of course, to the almost endless number of possibilities involved).

One of the best features of this unit is that it is built with a randomizing factor which makes it highly unlikely that the same game will be played twice. It will employ any one of several moves of approximately equal strategic value. Because of this, the operator cannot memorize what the unit did in similar situations in previous games and move accordingly, for the machine may not cooperate.

Also, other games can be played on the CompuChess Second Edition. The game of Knights, Amazon Queen, Survival, and even Pre-Chess. In conclusion I offer the following comments:

- A. The keyboard is easy to use, although the instruction book sometimes assumes that the operator has prior experience with some form of computer chess. I have informed the company of this fact and they are looking into the idea of printing a supplement for better explanation.
- B. It is easy to program to solve mate in two problems and postal and book positions.

C. I believe it to be a superior teaching aid.

D. It is attractive and compact. A playing board is not attached which allows the unit to be held in hand or placed on the table while using your own board. However, a small magnetic set with numbers on each square can be purchased for about eight dollars if you like.

E. It is now available at the best price that I have seen for any unit with similar features. Suggested retail price is \$209.95 but is now being offered at \$129.87 plus \$3.00 shipping and handling charges.

All things considered, I must give CompuChess a high rating-a unit well worth its price.

NOTICE: The review was done at the writers initiative, and was in no manner enticed or paid by DataCash or any other party.

William H Dodgen

EXPAND YOUR HORIZONS - Mark Solomon

It's always the same faces at the same site. You've played this turkey seventeen rated tournament games this year and he is at your chess club every week. Everybody knows your openings as well as you do. Do your tournaments sound like this. If so, you need to expand your horizons; put a little distance between you and your home turf! Unlike the northeast where N.Y., N.J., Pa., RI., Conn., and Mass. combine for 13,524 members, or California with 6862 players; the southeast composed of Fl., Ga., AL., S.C., and Miss total only 3,401 people spread out over a much greater area. Therefore, the chances for meeting an opponent more than once is greatly increased. If you want to break out of that "I gotta play you again" rut, my advice is to hit the road for your next tournament. The livening of your game, the making of new friends, and the fun and excitement of being in a different city are the rewards you will accumulate.

I will be writing a series on the different places around the southeast to play tournaments, the array of local characters you will encounter once you arrive there, and the fun you can expect to have.

Gainesville, Fl., "University City", home of the fighting Gators, is perhaps the strongest chess center south of D.C. and west of the Mississippi. University of Florida will be fielding teams in the Pan Am Intercollegiate with average ratings of 2158 and 1873. The 7th North Florida Open, with a guaranteed \$750.00, is being held on Feb. 10-11 and will provide an excellent opportunity to play top notch competition. Local Masters Dr. Walter Cunningham and Russell Garber will be present along with the hilarious comedy team of "To Tall" Greg Small and John "Naha" Nardandrea. This is one tournament you won't want to miss. The Reitz Student Union of the University of Florida will be the playing site, and hotel rooms are available at the Union so make this your initial break from hometown humdrum.

Hogtown will be host to the 1979 Florida High School Championship to be held March 10-11. First and second place finishers will receive \$200.00 expenses each toward the National Championship, the top five individuals and top three teams will receive trophies. Simultaneous exhibitions will be given by Greg Small and John Nardandrea.

Don't let your game stagnate by repetitious encounters. Travel around the southeast, and your enjoyment of chess will surely increase. NEXT ISSUE- Atlanta: The Big Money Game.

NOTES FROM THE PRESIDENTS DESK (SC)

- * As you will read elsewhere in this issue, the 1978 S.C. Championships was very successful. Sixty-three players participated! But more important, the tournament was well planned, conducted, and directed. Our thanks to John and Kay McCrary and the members of the Palmetto Chess Club for a job well done.
- * I must also express my appreciation to the players that played in our championships. I have seldom seen as much enthusiasm for the game of chess mixed with comradeship. The results were a good sign for the future of S.C. Chess.
- * I would like to announce two appointments to SCCA POSITIONS. First, Stan Vaughan has resigned as SCCA Editor due to a heavy work schedule. My thanks to Stan for his help for the past year and a half. Our new Editor is Dr. M. Lee Hyder, who edited the SCCA news for several years before his election as national secretary of the USCF in 1975. Lee's experience and his vast knowledge of the state, regional, and national chess scenes will be a valuable asset to this publication. I am also pleased to announce that Bob Webb of Columbia has accepted the position as chairman of SCCA's newly formed Prison's Activities Committee. As Bob is employed by the S.C. Dept. of Corrections as Recreation Director, He is in the unique position to serve the association and the Prison Chess Clubs.
- * Earle Morrison has brought it to my attention that some tournament announcements are being sent to Chessman for free publication that do not require state association membership. To run such ads is against the policy agreed to by the state associations. SUPPORT YOUR STATE, require these memberships, and receive the full support of the state and The Chessman. We will all benefit by joint cooperation.
- * I urge all SCCA Members to vote.

After having held the lead three rounds from the finish, the U.S. Team weakened just enough in the last couple of rounds to be edged out by Hungary (37) and the USSR (36). Nevertheless their third place finish was a very reputable showing in such a strong field.

No longer can any of the teams be taken for granted. For example: the Russians were lucky to hold England to a tie after Miles upset Spassky (game on pp 3) for the first loss that gentleman has received in some seven Olympiads. On the other hand formerly weak Switzerland came just as close to thrashing the U.S. after Korchnoi roughed up our own Kavalek (game on pp 6) in the last round. So it went round after round in what was probably the most closely matched Olympiad ever held.

The tournament was held in the great soccer stadium in Palermo, about twenty minutes from beautiful Buenos Aires. Although the stadium was reported to have held 200,000 fans for the World Cup, it was definitely not the ideal place for a chess tournament. In the narrow rotunda that encircled the stadium spectators and players were quite cramped for space. Other times when the crowds were large it was most uncomfortably close and warm. Normally the Argentinians are among the worlds finest host, but I am afraid this event was not too carefully planned.

Of course, it was great to see some of my old friends again.

Najdorf gave us a wonderful party at La Cabana Restaurant the evening we arrived. Waiting to greet us were Quinteros, Rossetto, Guimard, as well as many friends we had made back in 1946, when we last played in the Mar del Plata Tournament. As usual Smyslov brought my wife a tin of Beluga caviar, and, of course, I had a couple of flashy ties for him. This became a ritual with us since it has now been going on for over 30 years.

We were glad to see Petrosian, although this time without his one and only Rona, and the handsome giant Auerbach who never seems to get older. Spassky too with the magnificent lionine head was there with his beautiful French wife. He told me he has been living in Paris these past two years, yet still plays for Russia! My very good friend Dr. Euwe was there looking spry and fit at 77 years. We attended the races together and both cashed tickets on the special race run in honor of the chess tournament.

No Olympiad would be complete without a few get togethers at the bar. You can be sure that I had my share of brew particularly with the original brewmasters Timman, Donner and Olafsson. All in all it was a wonderful reunion and we wouldn't have missed it for the world.

A word about the arrangements for our team and a suggestion for the future. Next time we field a team we must be prepared to send a captain as well as an analyst. On paper it may seem that one man can handle both jobs. In practice it is far too much to expect. For example there were three occasions out of the six days I was there, that I took over for Benko on the A.M. sessions. Why? Because he had been analysing adjourned games until four A.M. the night before.

There are also many other things that a captain can do that make him a very important member of the team. Like all other countries we should not be without one.

YOU AND YOUR CHESS CLUB

(second part of a series designed to help chess clubs)

One of the biggest problems that has to be faced by a chess club is how to obtain adequate publicity. Some clubs sidestep this issue by relying on chess publications to relay information on upcoming events and to publicize their meetings. This is indeed the most effective method to reach established chessplayers in an attempt to draw participants to a tournament. But let us look at the negative aspects as well. The most obvious is the failure to increase public awareness of your club and the activities that you offer.

While it is true that an article in your local paper will bring few, if any players to a tournament, it does inform the general public of your activities and let them know of the existence of your club. The same applies to the use of PSA's (Public Service Announcements) on radio and TV. The assumption is simple: the more people

that read or hear about you and your club, the greater the opportunity for you to reach NEW participants. This helps insure the future of your club.

The ideal publicity program employs both outlets: the chess publications and the public publications and airways. But many newspapers refuse to give space to chess. Also, it can be difficult to obtain the free PSA's on radio and TV. I will tell you some shortcuts and helpful hints to aid you in breaking this barrier.

PSA's ON RADIO: When you want to announce club meetings or tournaments, send the radio station an index card with the following information TYPED on one side only: WHO, WHAT, WHEN, WHERE, sometimes WHY, and HOW. **EXAMPLE:**

The Westside Chess Club will host their annual Winter Chess Festival at the Oakland Recreation Center on Dove Street on Saturday, December 16 at 9 AM. The tournament will be played in sections of four players with a trophy awarded to the winner of each section. Different sections for new and unrated players. A small entry fee will be charged, and bring your chess sets and clocks if you have them.

Note: As a rule, radio stations do not announce entry fees or give out telephone numbers, nor do they want the announcement much longer than the example above, so select your words carefully. Try to have the PSA to them at least ten days to two weeks before your event so they can plan it in their schedule.

PSA's on TV are the same as for radio. Most stations have a program such as a community calendar on which they make these announcements. Address your card to that program if you know it's name.

FOR NEWSPAPER ANNOUNCEMENTS: Expect your copy to be placed in whatever part of the paper that they can use as a filler, AND DO NOT WRITE THEM AND COMPLAIN ABOUT THE LOCATION THEY GIVE YOU LEST YOU WANT THEM TO DISCARD FUTURE ANNOUNCEMENTS. Again it is better to mail them your copy than it is to call it in a few days ahead of the event. Be brief, but give adequate information. DO NOT WASTE SPACE WITH "COLOR COMMENTS" AND DO NOT TRY TO GIVE EVERY LITTLE FACT AND FIGURE. Be concise and exact and you increase the chances that it will be used somewhere in the paper.

IMPORTANT: Do not overuse the free media or they may begin to ignore your announcements.

Save their time and space for

the more important events that would be of interest to the public. As a rule of thumb, expect no more than four PSA's a year on radio and TV. You can use the newspaper more as they require fillers every day.

Next issue we will discuss problems within the chess club.

CHESS LEAGUES

FL

I South Florida Chess Conference is neither a high school club nor a chess club in Bradenton. Rather, it is an organization of nine high schools in the county areas of Pinellas, Manatee, Sarasota and Hardee. We have a regularly scheduled season of play which concludes this year on December 16th. Our member schools play by a modified set of rules which allows for limited site availability. Our effort is to get chess funded within the various school systems we represent. We feel that we are well along in our efforts. Many of our member schools award letters in chess which carry the same prestige (probably more) than letters in football, etc. Our criteria are stringent and uniform (a requirement of our school boards) for earning a letter in chess.

Within the SFCC, we have team competition (5 person teams) as well as male and female categories of play. We have our own rating system which we use internally for conference play.

This is the last year in which I will be acting as the conference director. I am now a full time professor at Manatee Jr. College, and I am in the process of building a chess team there. A new director for the SFCC will be elected by December 16, 78. The new director will be in touch with you after he/she assumes office.

Allan Lipert, Director SFCC

NOTICE

The Chessman provides a FREE listing to Chess clubs within our five states. You need only to send in a postcard.

1979 SCCA Ballot:

President: William H. Dodgen
 Write-In _____
 Vice President: Marion Mahaffey
 Write-In _____
 Secretary: Charles E. Braun
 Write-In _____
 Treasurer: Harold M. Kelley
 Write-In _____

Referenda:

Dues Increase: For Against
 Increase adult dues to \$6 _____
 Increase adult dues to \$5 _____

Patron Membership:

Establish a patron Membership _____
 with dues of \$10: _____

Signature _____

Membership Expiration Date _____

A facsimile ballot may be used if signature and expiration date are provided.

MINUTES OF THE 1978 BUSINESS MEETING (SC) By SCCA Secretary Charles E. Braun

President Dodgen called the meeting to order at 1:00 PM Saturday, Nov. 4.

Petitions were received to nominate the officers on the above ballot.

The proposals on the ballot were approved.

The consensus expressed during the discussion was that dues for adults should be increased to \$6 and that dues for juniors should remain at \$3.

The meeting was adjourned at 1:45PM
 Charles E Braun Secretary

SOUTH CAROLINA CHESS ASSOCIATION TREASURER REPORT 1978

Expenses	1976	1977	1978
Newsletter	439	284	610.52
Tournaments	-	31	41.72
USCF Affiliation 60 (3 year)	-	-	-
Membership Dr	60	-	-
Postage	42	13	45.24
Miscellaneous	16	6	29.90
			\$727.38
Balance forward from 1977 account			\$423.01
Receipts including \$36 for USCF			711.10
1978 Bank Debit			1134.11
Dues to USCF			36.00
			1098.11
1978 Expenses			727.38
Book Balance			\$370.73
Bank Balance 11/3/78			445.73
Check in transit			75.00
			\$370.73

H M Kelley Treas. 11/3/78

1978 SOUTH CAROLINA CHAMPIONSHIP

Something old, something new! The old story was a win by Lee Hyder of Aiken in the Championship Section, making the sixth time he has won or shared the title. Hyder's perfect 5-0 put him a point up on newcomer Richard Cohen of Anderson and David Hutchins of Columbia, who shared second place.

Although Hyder had gone a point up on the field after four rounds, the finish was not without drama. Randy Ferguson, who had had Cohen in desperate trouble in the morning round before falling to a blitz counterattack, also jumped to a big advantage against Hyder in the last round. At one time he was a bishop ahead with two deadly connected passed pawns. Then came time trouble and another life-or-death

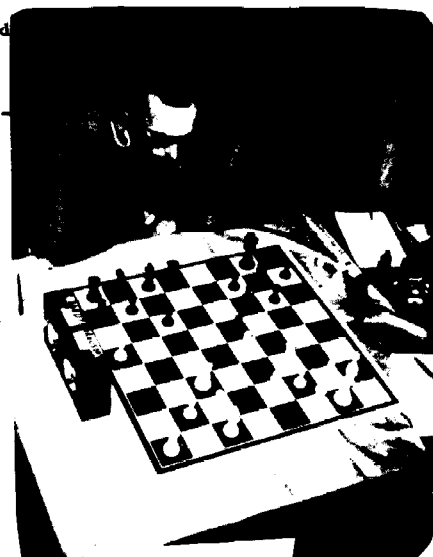
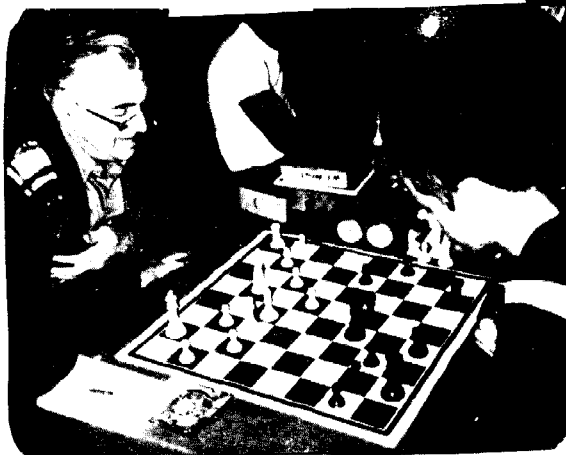
counterattack, and when the smoke had cleared Hyder was a pawn up in a rook endgame.

More than sixty players turned out at the Tremont Motor Inn in Cayce for the three-section tournament. At this time complete results from the other two sections are not available. These will be included with games and additional details in our next issue.

ANNOUNCEMENTS (SC)

The University of South Carolina Chess Club meets Monday nights at 8:00 PM, in Moore Dormitory Conference Room. Jim Fant is President and Don Lemaster is Sec-Tres. of the club.

Pictures on this page are all from the South Carolina State Championship.



PHOTOS
 LEFT TOP TO BOTTOM
 Marion Mahaffey & Mark Cantrell
 Marion Mahaffey & Jim West
 Lee Hyder & Richard Cohen

RIGHT TOP TO BOTTOM
 David Sumner
 Randal Ferguson
 Paul Tinkler

EDITORIALS

The complexity of a combined magazine reaches its peak in editorial policy. The Chessman itself has no editorial direction and the term editorial policy refers to the form of editorials allowed rather than content. First of all one should keep in mind that all editorials presented are the opinions of the signatories only and do not represent any overall opinion, furthermore The Chessman accepts editorials equally from any subscriber regardless of the direction of the editorial. For this issue of The Chessman, at least various views will be presented in an attempt to gain balance. The Chessman prefers editorials, signed, clearly labeled as such, that do not question the motivation of anyone, and that do not refer to problems within other organizations, such as the USCF. It is the feeling of this editor that problems within other organizations should be resolved within those organizations. In as much as the above policies have not been printed previously the editorials that have come in will be printed, and The Chessman is certainly open to suggestions in this matter.

Warning: The following editorials are not recommended by The Chessman and may be injurious to your health. -- JEM.

The editorials center on or mention the new \$3.00 per line charge the USCF has imposed on tournament advertizers this policy is stated in CL&R Dec. 78, Pg 704.

The Chessman has decided to devote considerable space to this matter as it is a news story of some value, and seems to be of great concern to tournament organizers all over the country.

The Policy Board acted on the initiative of the USCF Delegates who passed the following motion.

"The Delegates instruct the Policy Board to set guidelines for the Tournament Life department in CL&R and empower the Policy Board to set fees if deemed appropriate." First Class Pg 11 Aug-Sep 78

CL&R \$3.00 per line ad rate and related problems of money

When it was first announced that all tournament ads carried in CL&R would have to be paid for at the rate of \$3.00 per line as a credit toward rating fees for tournaments there was a large outcry. I felt it probably more than any other TD in Georgia as I have scheduled a tournament before that drew 0 players. Also since I mainly schedule only elementary and junior high tournaments there is always a low turnout. I can understand that the USCF needs more funds and that everything should be on a paying basis. I could also see some abuses of the Tournament Life Section of CL&R although I felt that my tournaments with 6-12 kids should be an exception as I was developing players to secure the future of chess. That was not a solution. Those of us involved in chess are going to have to make some serious decisions if we want chess to survive. We are going to have to support USCF, tournaments, and tournament sites financially or we will be in big trouble. I feel chess cannot survive without a national organization. If we don't get out to a lot of tournaments, they will start being less frequent. Finally, we must realize that the hotels where we have tournaments make us a good deal on rooms and for the use of their meeting space, not out of their desire to support chess, but because they hope the players will stay there and eat there. If we can't get you the players to support the hotels during tournaments then the next time we want to have a tournament in their facility we find the price has doubled, tripled or worse. I can't solve all these problems but by working together we can. The problem of the \$3.00 per line ad in CL&R, I can and did solve. I have run 2 ads in the Feb. issue of CL&R for which I gave the name of the tournament, see The Chessman or write and I gave my address for details. I have also spoken to USCF and they are also developing a one line ad that can be used for small tournaments. As I said before we are going to all have to help finance chess and if a \$3.00 charge for a tournament announcement is going to stop chess then all I can say is that it must not be worth keeping anyway.

Steve Schneider

VIEWPOINT

The USCF appears to be bent on self destruction. Consider some of their recent actions. First, they have instituted a fee for being a tournament director. True, it's only \$5.00 every four years, but without TDs there are no tournaments. This action has helped to drive the best TD in the state (NC) into retirement. The most recent action, is a minimum rating fee of \$15.00 for a tournament announced in CL&R. The way this new policy works is to levy a fee of \$3.00 for each printed line in the tournament life section. This tariff is applied to the rating fee provided the rating fee is paid on time (within two weeks of the tournament).

The length of the Spartan or Ram announcements is five lines, or, \$15.00. I am assuming that this would be true of most other one day tournaments. Thus, the break-even point with the current rating fee is 40 players. The Ram draws this many players, but how

many others do?

This policy blatantly discriminates against the small, local tourney, the backbone of American chess. I am writing a letter of protest to the USCF President, Gary Sperling, and suggest others do as well. According to a USCF memo, this policy was implemented by the Policy Board on instructions from the Delegates who attended the 1978 business meeting. I am interested in hearing from any delegates who attended this meeting.

Tom Galloway, Sec./Tres. NCCA

First lets take the easy one "It was noted that in the August meeting the recertification fee was waived for active tournament directors ..." First Class Aug-Sept 1978 Pg 29.

Three factors may have been considered by the delegates in passing the \$3.00 motion, they are as follows:

1. The financial status of the USCF.
2. Editor Hochberg's opinion "Tournament Life"

In 1975 CL&R averaged 75 pages a month, in 1976 just under 62, and in 1977 plus the first half of 1978 the average was about 57. In 1975 "Tournament Life" averaged 14 pages a month, or less than 19% of the total. In 1976 "TL" averaged 12½ pages, or about 20% of the lower 1976 total. In 1977 it averaged a little over 12 pages, or 21.3%. Last year, to counter the tendency of "TL" to occupy an increasing share of the magazine, the Delegates approved a new method of listing tournaments. In the eight months that the new method has been in effect (Nov.-Jun.), "TL" was up to 22.8% of the total, the largest gain yet! Obviously, the new method is a bust. It was my idea, and I regret it.

It is necessary to create a new "TL" system with safeguards to allow CL&R as a whole to grow in direct proportion to the growth in tournament activity that we all want. Tournament announcements are unnecessarily complicated: the numerous rules make them an unpleasant chore for the organizer; they occupy a great many clerical man-hours at the National Office, hours that should be used for processing memberships and orders and for other productive work; ... This department must be simplified, and it is up to the Board of Delegates to do it."

3. The feeling that some abuse of the free advertizing was taking place.

Indeed, it has been the experience of your editor that tournament ads are the most expensive part of your chess magazine, as Editor Hochberg points out requiring a "Great many clerical man-hours."

Therefore, for the reasons stated above, this editor was convinced the Policy Board had done the right thing, as of Dec. 1, 78. However, during Dec. 78 your editor went through a metamorphosis, several points were brought home:

1. Editor Hochberg's opinion has the tail wagging the dog. Presumably we are limited to having a number of tournament ads based on the size of CL&R such that the ads in sum will not be greater than about 20% of CL&R, and yet it is the ads which greatly justify CL&R. When you consider that the size of CL&R is based on the financial status of the USCF, Editor Hochberg's suggestion is quite frightening. For example, in a down cycle CL&R would get smaller, so less tournament ads, which would in turn further impair the USCF which would then cut back on CL&R and so forth.
2. It is clear from the Dec. 78 CL&R that much less proff reading than Editor Hochberg suggest is going on. Look at the ad for the PIGGLY WIGGLY OPEN, CL&R Dec. 78 Pg. 707. This tournament is a first category tournament and a grand prix tournament and yet it is not advertized as either.
3. Associating tournament ads with rating fees might imply that the USCF makes a profit on rating fees which would then in turn pay for the tournament ads, but First Class Pg. 13 postmarked July 28, 78 gives:

Total Revenues - Ratings	\$ 41,026
Total Expenses - Ratings	101,636
Acquisition cost - Ratings	225
Excess expense for the 6 months ended 3/31/78	<u>\$60,835</u>

The above suggest that rating cost are running about 2½ times revenues, which means there is no economic justification for saying if you have a big rating fee you don't have to pay for your tournament ad. - Ed.

The South Carolina Editor's Notes--Lee Hyder

Hello again! After a hiatus of some years here I have returned as South Carolina Editor, but in the new format of Chessman. I'm glad to be fully participating in South Carolina chess again, and look forward to renewing some old friendships and making some new ones.

Those of you who have games, news, or other items of interest should send them to me at 33 Longwood Dr., Aiken SC 29801.

Earle Morrison had some comments on the recent USCF elections in the last issue of The Chessman. As a retiring member of the USCF Policy Board I had a keen interest in the national elections, and can comment on what they looked like from inside, and where things are heading now.

Much of the real issue was personalities, and good old political power. The new political coalition was pretty much assembled by some of the same people who had been defeated three years ago, and had the support of others who had been unable to get what they wanted from the current board.

There weren't enough voters with direct interest to swing the election, of course, so some issues were brought forth. Oddly, considering that the incumbent Board had been the first to confront the Federation's financial problems directly in years, one big issue was finances. Another was services. Fees to affiliates had been raised, both for affiliate membership and for rating games. Finally, the business office came in for criticism, which is not surprising when it is considered that the Executive Director had been politically opposed by several major backers of the new Board. All these points were laid on those incumbents seeking reelection, and the electorate was convinced that they should be thrown out.

Where are we now? The Policy Board Newsletter has printed the official actions of the Policy Board to this date, and they pretty much confirm the old premise that circumstances dictate policy. Looking over the actions I find very little done that might not have been done by the old Board. Ironically, in view of their campaign promises, one of the first actions of the new Board was to put a fairly substantial charge on Tournament Life announcements, a very undesirable action that was pretty much forced by misuse of this vehicle for advertising many local club tournaments. We have all lost by this, but the PB is not necessarily to blame. One other rather dubious action was to give partial support to a California team of junior players in the National Chess League, thus raising the question: if they are supported, why not everyone else?

More important, I think, that the official actions of the Board, which are quite trivial for the most part, are some of the unofficial actions taken by the acting Staff Director, George Cunningham. George is the USCF Treasurer, and enjoyed very widespread support for this position. He is running the USCF without pay (that will save us a little right there) until a permanent Director can be named.

One of Cunningham's first acts was a major increase in the price of the Yugoslav publications, ECO and Informant. The USCF receives a very favorable price from the printers on these, and at least for ECO has exclusive import rights into the United States; they can charge what the market will bear. It seems that this will be done instead of giving the membership a major break as in the past. This action probably isn't a political payoff but it looks like one; one major chess book distributor who was a strong supporter of the new Board has been trying to get the USCF to raise its prices on these items for some years so he can compete.

Another aspect of the new Board is that it seems to have a really thin skin to criticism. Fred Townsend, the defeated candidate for President, has started a monthly publication called "What's Going On in U.S. Chess". He was refused the opportunity to run a paid ad in Chess Life & Review because, it was stated, the title implies that CL&R doesn't tell what's going on! Others who have been critical of some action or other have received really snippy replies.

The crucial action of the new Board will of course be the appointment of a new staff. It will be interesting to see who gets this position; by the time you read this it may be decided. Leaving politics aside, I believe the Board has enough wisdom to make a good choice, and I wish them well; the direction of the USCF for some years will depend on how well they do.

Late news just received by phone tonight: The new Staff Director of the USCF is Mr. Richard Meyerson, a Class A player who has been a professional YMCA administrator for 18 years. Mr. Meyerson is Assistant General Director of the Dutchess County YMCA in Poughkeepsie, N.Y., near Newburg. He has a Masters' degree in recreational science and is 44 years old. Mr. Meyerson will assume his new position about the first of the year. Applicants for other USCF staff positions will be reviewed by Messrs. Meyerson, Sperling, and Cunningham at that time.

Lee Hyder

USCF Treasurer George Cunningham certainly does enjoy widespread support. The Oct 78 CL&R Pg 530 election returns show: George Cunningham 256, Paul Shannon 35, write-ins 10, abstains 4.

The Chessman was able to interview the 69 year old Treasurer, he, George Cunningham, was able to confirm Editor Hyder's report:

The book prices for ECO & Informant had not been increased for several years, and in the interim other prices had gone up such that the USCF was losing money on the sale of these books, therefore Cunningham first raised the wholesale price on these books, and later the retail price.

Those readers who notice the following ad on page 594 of CL&R November 1978 may not understand the above editorial.

WHAT'S GOING ON IN USCF?

All News & Features

12 Issues-\$10
Sample Copy-\$1

Fred Townsend
10 Bermuda Road
Wethersfield, CT 06109

The above ad was run, however, Mr. Cunningham objected to the expression "What's Going On In USCF" whether or not that is the title of the publication and declined to continue the ad. Since then the Policy Board has voted not to run the ad, Mr. Cunningham abstained in that vote.

Mr. Cunningham also reported that the USCF was aware of the problems being caused by the \$3.00 per line charge for tournament ads, and that a new one line ad for Quads was being developed.

LETTERS TO THE EDITOR

Dear Sirs: Nice issue!

J.E. Barwick
Melbourne, Fl.

Dear Chessman Editor:

Enjoy your magazine very much. I was certainly sorry to hear of Chuck Walter's death. I recall having dinner with him after a tournament in Atlanta a couple of years ago, and we compared our "luck" against the younger players who now dominate chess.

Sincerely yours,
R.L. Froemke
Tallahassee, Fl.

Thanks for sending me The Chessman. An excellent job. The chess public is fortunate in having so many hard-working enthusiasts, true amateurs, to keep the chess flame burning brightly.

F. R. Chevalier
Tryon, N.C.

Dear Friends:

I would like to take this opportunity to thank two great guys who made this magazine possible, Larry Storch and Stan Vaughan.

Sincerely,
Earle Morrison

NOTICES

BOO-BOO

Fl

At a tournament held in Orlando on June 24th and 25th, 78, membership dues were collected from the following: Eric T. Boettcher, Charles E. Barrett, and Kenneth W. McDonald, but no addresses were given.

If any of you know the addresses for any of the above, please send them to the FCA, 4040 67th Ave. N., Pinellas Park, Fl. 33565.

NEW CHESS LEAGUE! NOW FORMING

Ga.

1st Round Robin "season" to begin in March. Any 5 man team within a 100 mile radius of Atlanta is eligible. Trophy and money to winner. All star teams selected at conclusion of season.

Contact: Don Mullis 404-622-8279
Al Hamilton 404-255-3531
USCF and GCA REQUIRED

1979 GEORGIA SCHOLASTIC CHESS LEAGUE

Ga.

Letters have been set to go out to all high schools in Georgia around December 30th. Basic details are 4 boards per team. Schools can enter as many teams as they want. There is a \$70.00 entry fee per school (not per team) any school wanting either to register or desiring more information write Steve Schneider, 1331 North Decatur Road, Atlanta, Ga. 30306. The league will start matches in January.

SUMMER CHESS CAMP 1979

The GCA and the Atlanta Kings will sponsor a chess camp to be held for approximately one week this summer. We have talked to Emory Univ. about use of their facilities and the entire camp cost would be about \$150. for the week. We have also talked to John Collins teacher of many grandmasters including Lombardy, Fischer & Byrne and he said he would be glad to either come down and teach or to get us someone to teach. We will need at least 25 players to hold a camp. If you are interested write us. Thanks Steve Schneider

WHERE TO PLAY CHESS

FLORIDA

Coral Gables

Coral Gables Memorial Youth Center Monday 7 PM call P Daich 2798720
Orlando

Orlando Rec. Bldg. Paramore & Livingston, Wed. & Fri. 7:30 PM and
Sunday 1:30 PM. Call Larry Storch 273-4982 for more information.
Jacksonville

Community Hall at the Phillips Mall Shopping Center 3563 Phillips
Hwy. Wednesday at 7:30 PM.

Pompano Beach

Pompano Beach Rec. Center, 1801 N.E. 6 St. Friday 7:30 PM.
Tallahassee

Tallahassee CC FSU Univ. Union, Woodward Ave. & Tennessee St., Rm. 346
7 PM Tuesday.

GEORGIA

Adel

Cook County CC, Cook High School, Thursday 3:05 PM
Albany

Albany CC, NW Branch Library (Day and time unknown)
Athens

Athens CC, Dudley Park, Thursday 8 PM.

Univ. of Georgia CC, Chemistry Bldg. Rm. 1505 Wed. 7:30 PM.
Atlanta

Don Mullis Chess Studio for advanced players. call 622-8279.
Northeast CC, St. Michaels Church 3323 Chestnut Dr. Thur. 7 PM.

Emory Univ. CC, Rm. 211, Student Union Bldg. Sat. 12:30 PM.

East Side CC, The Meeting Place, 2564 Gresham Rd., Sat 3:00 PM.
Augusta

Augusta CC, Augusta Rec. Center, Wed. 7:30 PM.
Dalton

Dalton CC, contact William Strain 1508 Dug Cap Road.
Gainesville

Lanierland CC, Breneau College, Yonah Hall, 7:30 PM Tues.
Columbus

Columbus College, Davidson Center, Wed. 7:30 PM
Macon

Macon CC, Robert Train Bldg. Oglethorpe Blvd. Wed. 7 PM.
Marietta

Cobb County CC, Thursday 7:30 PM call Jim Pressley 436-1217.
Rome

Rome CC, Rome Rec. Center, 300 West Third St. Fri.
Savannah

Armstrong College CC, Gamble Hall, Fri. 12:30 PM.
Savannah CC, Duffin Park Activities Bldg. Monday 7 PM.

St Simon's Island CC, Island Club, 800 King's Way, Monday 8:00 PM.
Thomaston

Thomaston CC, Civic Center, Tuesday 7:30 PM.
Valdosta

Valdosta CC, Tall Tree Apts. Rec. Center, 200 Connel Rd. Tue. 7:30
NORTH CAROLINA

Mars Hill

Mars Hill CC, Mars Hill College, Memorial Library, Thursday 7:30 PM
SOUTH CAROLINA

Charleston

Charleston CC, Post Courier Bldg. 6296 Rivers Ave. Wed. 7 PM.
Clemson

Clemson CC, Church of Christ meeting room 212 Seneca Rd. 6 PM
Monday thru Thursday.

Columbia

Palmetto CC, Blue Cross/Blue Shield Bldg., Alpine Rd. at I-20, Thu 7
Greenville

Greenville CC, Bobby Pierce Community Center, Townes St., Wed. 7:30 PM
Lancaster

Lancaster CC, Star Hall, Univ. of SC at Lancaster Thur. 7 PM.
North Augusta

Augusta CC, Augusta Rec. Center, Wed. 7:30 PM
Spartanburg

Spartanburg CC, Sugar & Spice Cafe, North Pine St. Tue. 7:30 PM

Bring your sets to the chess clubs. Many college clubs do not
meet during the summer.

TOURNAMENTS

THE 1978 CHESSMAN CORRESPONDENCE CHAMPIONSHIP

The Chessman announces their 1978 correspondence championship.
The tournament is open to all Chessman subscribers.

Initial assignments will be in 9 man sections, you will play 4
White and 4 Black games simultaneously. Play will be in 2 rounds;
preliminary and final sections. Those who score 5½ or more advance
to the finals.

All games are rated, and ratings will be published in Chessman.
We ask new entrants to furnish their latest USCF or any postal rat-
ing. New players will be given a 900 rating. Rating classifications
are as follows:

Classifications
Master
Special Delivery

Postal Rtnng.
1500 & up
1300 - 1498

Classifications

First Class
Second Class
Third Class

Postal Rtnng.

1000-1298
700- 998
698- & below

Entry fee is only \$5.00 per section. You may enter as many sec-
tions as you like. All entry fees will be returned minus the usual
expenses. Also, a beautiful plaque will be awarded to The Chessman
Correspondence Champion.

Standard postal rules will apply.

Entries will close Jan. 15, 1979, assignments will be sent as
soon as sections are filled.

Mail entries to The Chessman, 2672 Moss Lane, Marietta, Ga.
30067.



1979 ATLANTA CONGRESS JAN 6-7 (Ga.)

5-SS, 45/2, Century Airport Inn, I-285 at Riverdale Road, Atlanta Ga.
30349. EF: \$15.00 if received by 1/1; \$16.50 at site. \$500.00
Guaranteed: \$ 100-60-40; Classes A, B, C, D, & E UNR. \$60 each. REG:
ends at 9:30 AM. Rounds: 10-3-8; 10-3. GCA Mem. req. (Other states OK)
Hotel Rates \$20-24. Enter ICI, 3055 General Lee Rd. Macon, Ga. 31204.

1979 ATLANTA SCHOLASTIC CONGRESS JAN 6-7 (Ga.)

5-SS, 40/1, location and enter same as above. EF: \$6.75 if received by
1/1, \$8.75 at site. Prizes: Trophies to Top 3, Top 1500, Top 1400, Top
1300, Top 1200, Top 1100, Top 1000/below, J.H.S. Student, Elementary
Student, Trophy to first place team of three. REG: Ends at 10:45 AM.
Rounds: 11-2-5; 10-1. GCA Mem req. (Other states OK). Hotel \$20-24 NS

1979 TAMPA CHESS CLASSIC JAN 6-7 (Fl.)

5-SS, 45/2, University Center Room 252, Univ. of South Florida, 4204
East Fowler, Tampa, Fl. 33620. In 2 sections: Open, EF: \$15.00 if
received by 12/28; \$16.50 at site. Prizes: \$250.00 Guaranteed:
\$100-50; Classes A and B \$50 each. Reserve Section EF: \$15 if re-
ceived by 12/28; \$16.50 at site. Prizes: \$250 Guaranteed: \$100-50;
Classes D & E/UNR. \$50 each. Both FCA req (Other states OK), REG:
Ends at 9:30 AM. Rounds: 10-3-8, 10-3. Enter: ICI, 3055 General Lee Rd.
Macon, Ga. 31204. NS.

1979 TAMPA SCHOLASTIC CLASSIC JAN 6-7 (Fl.)

Location, Enter, and Registration same as above. In 3 sections: High
School, EF: \$7.50 if received by 12/28; \$10.00 at site. Prizes:
Trophies to Top 5, Top C, Top D, Top E/UNR., Top Team. Junior High, EF:
\$6.50 if received by 12/28, \$9.00 at site. Prizes: Trophies to Top
5, Top 1000/below, Top Unrated, Top Team. Elementary, EF: \$6.00 if re-
ceived by 12/28; \$8.50 at site. Prizes: Trophies to Top 5, Top 1000/
below, Top Unrated, Top Team. All, FCA Mem req. (Other states OK).
Prizes: based on 15 a section with 3 a class. Team trophy on 3 teams
of 3 per section. Rounds: 10-1:30-5:00; 10-1:30. NS.

1979 ATLANTA QUADRANGULAR JAN 7 (Ga.)

Location and Enter same as Atlanta Congress, 3-RR, 45/90, EF: \$5.75
if received by 1/1; \$7.00 at site. Prizes: Trophy to first in each
section; Every participant gets a FREE COPY of the hardback 200
Modern Chess Traps in the fianchetto Openings. Registration ends at
9:45 AM. Rounds: 10-1:30-5.

SECOND SATURDAY SWIFT SWISS JAN 13 Ga.
3-SS, in 8 man sections, Elizabeth Bradley Turner Center, Columbus College, Columbus, Ga. EF: \$5.00, Prizes: \$25 in books each section. REG: 9-9:30 AM, RDS: 9:30-12:30-2:30. TL: 40/60.
Amateur Section: 5 rounds between 10:00 and 3:30, book prizes, Registration fee \$5 early/ \$6 late.
Both Enter: Chess Tournaments, Community Services, Columbus College Columbus, Ga. 31907. For more information call Bill Edwards 5682023 GCA Mem. req. (Other states OK).

SOUTH PENN WINTER OPEN JAN 20-21 Pa.
contact Joe Ohler, 236 W. Main St., Waynesboro, Pa., 17268

PSCF/CBM #5 JAN 20 Pa.
Philadelphia College of the Bible, EF: \$5, Open sections of 8, Prizes: \$30-14-8. EF: \$2, Scholastic section, 4 SS, Trophies.

PIGGLY WIGGLY OPEN CHESS TOURNAMENT JAN 20-21 Ga.
OVER \$1500 IN PRIZES !!
COLUMBUS GEORGIA

5-SS, Martinique Motor Inn, 1011 4th Ave. Columbus Ga. In 2 sections OPEN: 40/2, EF: \$22 if received by 1/15, Prizes: \$300-200-150, A 100-75; B 100-75.

Amateur: 45/2, open to all below 1600. EF: \$20, if received by 1/15, Prizes: \$200-100-70, D \$60-45, Top Unrated \$35.

ALL: GCA Mem req. (Other states OK), EF: \$3 more at site, HR: \$18-25, then \$4 each additional person, Enter: Columbus Chess Club, P.O. Box 7122, Columbus Ga. 31908, \$10 off USCF Membership for new mems.

1ST ATLANTA STEAK AND BOOKS JAN 21 Ga.
3-SS in 6-man sections, 45/90, Bonanza Sirloin Pit, 2915 Clairmont Road N.E., Atlanta, Ga. 30333. EF: \$7.95 if received by Jan. 6; \$8.95 at site. Prizes: \$20.00 in books to 1st and a steak dinner to all. REG: Ends at 9:45 AM, RDS: 10-1:30-5, Enter: ICI, 3055 General Lee Road, Macon, Ga. 31204. LS.

1979 FLORIDA TECH CLASSIC JAN 20-21 Fl.
5-SS, 45/2, Florida Tech Univ., Multipurpose room, Alfaya Trail and F.T.U. Blvd., Orlando, Fl. 32807. EF: \$14.50 if received by Jan. 13; \$15.50 at site. Prizes: (\$500. based on 47 entries), \$125-75-50; Classes A, B, C, D, E/UNR. each \$50. REG: Ends at 9:45 AM, RDS: 10-3-8, 10-3. FCA Mem req. (Other states OK), Enter ICI (address above), NS.

ATLANTA WINTER OPEN JAN 27 Ga.
4-SS, Northwood Presbyterian Church, 3330 Chesnut Dr., Doraville (Atlanta) Ga. EF: \$8.00 if received by 1/22; \$11 at site, Prizes: \$250 based on 40 players, \$75-50-25; B, C, D/E, Unr. \$25 each. Trophy to top HS team of 4 if 3 or more teams. RDS: 10-1-4-7. Enter: Steve Hunt, 4153 Wesley Club Dr., Decatur, Ga. 30034. NS, GCA Membership required (Other states OK).

ATLANTA ELEMENTARY CHAMPIONSHIP JAN 27 Ga.
Location and enter same as above. 30/30 open to grades 1-7 EF: \$4 if received by 1/22; \$5 at site. Trophies to top 4. RDS: 10-12-2-4 GCA Mem req. (\$5, jr. \$2) REG: 8:30-9:30 AM. NS.

1979 Georgia H.S. Championships FEB 3-4 Ga.
Atlantan Hotel, Downtown, at Cone & Luckie Streets, Atlanta, Ga. 30303. Championship section, 5-SS, 45/90, EF: \$7.00, Prizes: Trophies to top 4, Top C, Top D. Novice Section, 5-SS, 45/90, EF: \$6, Prizes: Trophies to Top 4. Both: Prizes based on 20 per section. Open to students in grades 1-12 (Novice, under 1200 or unrated). Trophies to Top 2 schools with teams of 4 scorers. Special Speed Tournament at 9:00 AM. REG: 8:30-9:30 AM. RDS: 10-1:30-5; 9:30-1:30. GCA Mem req. (Other states OK). Hotel: \$18.00-24.00. Enter: ICI, 3055 General Lee Rd., Macon, Ga. 31204. NS. Must be either a Ga. resident or student to win Title and Trophy.

1979 GEORGIA CONGRESS FEB 3-4 Ga.
Enter and location same as above. 5-SS, 45/2, EF: \$15 if received by Jan. 27; \$16.50 at site. Prizes: \$5500.00 GUARANTEED! \$125-75-50; Classes A, B, C, D, E/UNR. each \$50. REG: Ends at 9:30 AM. RDS: 10-3-8, 10-3. Hotel: \$18-24. GCA Mem req (Other states OK) NS.

1979 GEORGIA CONGRESS QUADS FEB 4 Ga.
3-SS, 45/90, EF: \$5.50 if received by 1/27, \$7.00 at site. Enter, Hotel, and location same as above. Prizes: Trophy to first; Wooden Chessboard to 2nd each section. REG: Ends at 9:45 AM, RDS: 10-1:30-5. GCA Mem. req. (Other states OK). NS.

7TH NORTH FLORIDA OPEN - \$750 GFF FEB 10-11 Fl.
5-SS, J. Wayne Reitz Union, Univ. of Florida Campus on Museum Rd., Gainesville, Fl. 32603. 45/2. In 2 sections, OPEN: \$150-90-60; Classes A and B \$60. Reserve, Prizes: \$100-70-40; Classes D & E/UNR \$60. Both EF: \$16.50 if received by Feb 1; \$18.50 at site. REG: Ends at 9:30 AM. RDS: 10-3-8; 10-3. Hotel: Some rooms in building for \$17-19. FCA Mem req (Other states OK) Enter: ICI, (Addr. above) NS.

SECOND SATURDAY SWIFT SWISS FEB 10 Ga.
Details the same as for Jan. 13 tournament of the same name.

PSCF QUADS FEB 17 Pa.

Philadelphia College of the Bible, EF: \$5 to PSCF Members, \$7.50 others, 40/1, REG: Ends at 9:30 AM, Prize: \$10 to 1st, Enter: Ira Lee Riddle, Fox Run Apts. #F24, 365 Newtown Rd. Warminster, Pa. 18974.

GEORGIA, ALMOST \$500, J.H.S. CHAMPIONSHIP FEB 24 Ga.
4 or 5 SS DOE, 30/30. Multi-team schools must set rosters prior to round 1. Emory Univ. Chess Club (subject to change). Open to any Ga. student grades 1-9. EF: \$6, if received by 2/14/79. \$3 more at site, 1/2 price for 2 or more from the same family. REG: 8:30-8:45 AM, Round 1 at 9 AM. Prizes: Top team and individual each receive a free room at the Marriott Hotel, Philadelphia, Pa., for their use at the J.H.S. Championship, May \$66,79. The top 15 will get to play Senior Master Jude Acers in a simultaneous exhibition on March 24, 1979 at 10:30 AM at the Atlanta Marriott. Trophies, cash, and other prizes donated through Destination Atlanta and other local companies make the prize fund approach \$500. We hope it will exceed \$600 by the tournament. For pre-regis or information write Steve Schneider, 1331 North Decatur Rd., Atlanta, Ga. 30306. GCA Mem req. NS allowed at site!

1979 FLORIDA CONGRESS / H.S. OPEN FEB 24-25 Fl.
University Center, Room 252, Univ. of South Florida, 4204 East Fowler, Tampa, Fl. 33620. In 2 sections, CONGRESS, 5-SS, 45/2, EF: \$14.00 if received by 2/14; \$15 at site. Prizes: (\$600 on 58) \$200-100-50; Classes A, B, C, D, E/UNR. each \$50. REG: Ends at 9:45 AM RDS: 10-3-8, 10-3. H.S. OPEN, 5-SS, 40/1, Open to all H.S. and Pre H.S. students. EF: \$7.50 if received by Feb. 14th; \$9.50 at site. Prizes: (Based on 40 entries) Trophies to Top 3, Top 1500, 1400, 1300, 1200, 1100, 1000/below, J.H.S. & Elem. students, Team of 3 (must be 4 teams) \$50 to 1st place individual and Team toward expenses to Southern High School Tournament. (Must play in Southern High School to get expenses) REG: Ends at 10:30 AM. RDS: 11-2-5; 10-1 Enter: ICI, 3055 General Lee Rd., Macon Ga. 31204. NS. FCA Mem req.

GEORGIA \$500 ELEMENTARY SCHOOL CHAMPIONSHIP FEB 25 Ga.
4 or 5 SS DOE, 30/30. Multi-team schools must set rosters prior to round 1. Location: The Hebrew Academy, 1892 N. Druid Hills Rd. NE Atlanta, Ga. 30329. 634-7388. Open to any elementary school student, but only a student in Ga. can receive the top awards. Individual awards to grade 6 and below. EF: \$5 if received by 2/15/79, \$3 more at site, 1/2 price if 2 or more from the same family, scholarships available if inquire by pre-entry date. All over 1400 receive free entry if pre-register. REG: 8:30-8:45. Round 1 at 9 AM. Prizes: Top team and individual each receive a free room for 3 days at the Marriott Hotel, Bloomington, Minn., for their use at the Elementary School Championship April 7-8, 79. The top 15 will play Senior Master (in a simultaneous) Jude Acers March 24, 79 at 10:30 AM. at The Atlanta Marriott. Trophies, cash, and other prizes donated through Destination Atlanta and other local businesses makes the total prize fund exceed \$500. For pre-regis or information write Steve Schneider, 1331 North Decatur Rd., Atlanta, Ga. 30306. NS.

10TH SOUTHERN CONGRESS / H.S. CHAMPIONSHIP MAR 3-4 Ga.
Radisson Inn, 1850 Cotillion NE, Atlanta Ga. 30338, call 800-228-9822 for reservations and info. In 4 sections, OPEN, 5-SS, 45/2, EF: \$14.00 if received by Feb. 24; \$16 at site. Prizes: (\$400 on 40) \$150 and Trophy - \$90 - \$60; Class B \$50; Below 1600- \$50. Amateur: (Open to under 1500 or unrated), EF: \$13.00 if received by Feb. 24; \$15 at site. Prizes: (\$300 on 30) \$120 & Trophy - \$60 - \$40; Classes D & E/UNR. each \$40. Both, REG: Ends at 9:30 AM. RDS: 10-3-8; 10-3. H.S. Championship, 6-SS, 40/80, EF: \$11.00 if received by Feb. 24; \$15.00 at site. Prizes: Trophies to Top 5 players, Top 4 four man teams; \$150-100-50 towards National H.S. Expenses (Philadelphia) to Top 3 players and Top 3 teams (Must play in National H.S. to get expenses) REG: Ends at 11:15 AM. RDS: 12-4:30-8:30; 9-1-5. H.S. Novice, 6-SS, 40/71, open to under 1400 or unrated. EF: \$10.00 if received by Feb. 24; \$13 at site. Prizes: Trophies to Top 5, Top E, Top Unrated, Top 4 four man teams. REG: Ends at 10:15 AM. RDS: 11-3:30-7; 9-12:30-4. Both, Open to all High School & Pre-High School students in Al, Ar, Fl, Ga, Ky, La, Ms, NC, SC, TN, or Va. ALL, Hotel Rates \$29 up to 4 in a room. GCA Mem req. (Other states OK). Enter: ICI, 3055 General Lee Rd., Macon Ga. 31204. NS. There is a 1/2 point bye available to elementary students in round 3 if requested in advance.

SECOND SATURDAY SWIFT SWISS MAR 10 Ga.
Details the same as Jan. 13 tournament of the same name.

PSCF/CBM #6 MAR 17 Pa.
EF: \$5 to PSCF Members, \$6.50 to others. For other information see PSCF/CBM #5, Jan. 20.

2ND ANNUAL ATHENS OPEN MAR 17-18 Ga.
5-SS, 45/2, Ramada Inn, 513 West Broad St. (On US 78), Athens, Ga. 30601. EF: \$14 if received by Mar. 10; \$16 at site. Prizes: (\$550 based on 55 entries) \$140-70-40; Classes A, B, C, D, E/UNR. each \$60. Trophy to Top Chess Club if there are 4 four man teams. REG: Ends at 9:30 AM. RDS: 10-3-8; 10-3. GCA Mem req; (Other states OK). Hotel: \$14.50-20.00-24.00. Enter: ICI, 3055 General Lee Rd., Macon, Ga. 31204. NS.

3RD ATLANTA STEAK AND BOOKS MAR 18 Ga.
3-SS in 6 man sections, 45/90, Bonanza Sirloin Pit, 2915 Clairmont Rd. N.E., Atlanta, Ga. 30333. EF: \$7.95 if received by Mar. 10; \$8.95 at site. Prizes: \$20 in books to 1st each section: FREE steak dinner to all. REG: Ends at 9:45 AM. RDS: 10-1:30-5. GCA Mem req. (Other states OK). Enter: ICI, 3055 General Lee Rd. Macon Ga 31204

4TH ANNUAL ICI CLASSIC-\$1200 GPF APR 7-8 Ga.
Atlantan Hotel, Downtown, at Cone & Luckie Streets, Atlanta, Ga. 30303. In 2 sections: OPEN: 5-SS, 45/2. Prizes: \$650 Guaranteed! \$200-100-50; Classes A,B,C each \$100; Trophies to Top 2, Classes A,B,C. RESERVE: Open to under 1400. 5-SS, 45/2. Prizes: \$550 Guaranteed! \$150-90-60; Class 1000-1199 - \$100, Classes below 1000, unrated each \$75; Trophies to Top 2, Classes 1000-1199, below 1000, Unrated. (Unrated only can win Unrated prize.) Both, EF: \$17.50 if received by March 31; \$20 at site. REG: Ends at 9:30 AM. RDS: 10-3-8; 10-3. Hotel Rates: \$18-24. GCA Mem req. (Other states OK) Enter: ICI, 3055 General Lee Rd., Macon, Ga. 31204. NS.

SECOND SATURDAY SWIFT SWISS APR 14 Ga.
Details the same as Jan. 13 tournament of the same name.

PSCF TORNADO APR 21 Pa.
EF: \$5 to PSCF Members, \$7.50 to others, 5-SS, 30/30, REG: Ends at 9:30 AM. RDS: 10-2-4-6-8 or earlier, at the Philadelphia College of the Bible. Enter: Ira Lee Riddle.

CROSSTABLES

1978 ATLANTA OPEN
OPEN SECTION
NOVEMBER 25, 1978

NAME	RTNG	RD1	RD2	RD3	RD4	RD5	RD6	TOT
1 Shocron, Ruben	2262	W26	W9	W22	D13	W16	D2	5
2 Pohl, Klaus	2187	W32	W25	D5	W6	W13	D1	5
3 Dunning, John	2253	W24	W12	D4	D5	W8	W9	5
4 Murthy, P.L.N.	2010	W28	W38	D3	D11	W12	D5	4½
5 Robinson, Henry	1948	W43	W44	D2	D3	W11	D4	4½
6 Coles, Mark	1911	W37	W49	D16	L2	W21	W14	4½
7 Holton, George	1954	L38	W50	W24	D31	W18	W10	4½
8 Kelly, Dave	1947	W50	W29	L13	W39	L3	W24	4
9 Jurjevich, Joe	1904	W27	L1	W32	W29	W22	L3	4
10 Khatena, Moshe	1888	D51	W34	W42	L16	W31	L7	3½
11 Vermilya, James	1830	D17	W51	W15	D4	L5	D12	3½
12 Stiers, Thomas	1897	W39	L3	W30	W37	L4	D11	3½
13 Jones, Curt	2087	W30	W14	W8	D1	L2	---	3½
14 Scott, Joseph	1841	W35	L13	D38	W43	W15	L6	3½
15 Ruiz, Guillermo	2003	W21	D42	L11	W38	L14	W23	3½
16 Algeo, Tom	2058	W53	W23	D6	W10	L1	---	3½
17 Fowler, Mark	1620	D11	W47	L36	W42	L26	W32	3½
18 Hamilton, O. Al	1770	L23	W27	W44	D36	L7	W30	3½
19 Whitman, Stephen	1768	W33	---	L37	D30	W43	W31	3½
20 Martin, Ulysses	1767	W48	L22	L29	D44	W38	W34	3½
21 Fernandez, Ivan	1746	L15	D33	W51	W45	L6	WF	3½
22 Kolvick, Randy	2038	W31	W20	L1	W26	L9	---	3
23 Shields, Phil	1461	W18	L16	L45	W28	W42	L15	3
24 Solomon, Mark	1759	L3	W40	L7	W35	W27	L8	3
25 Buel, Eric	1891	W46	L2	L31	W33	W37	---	3
26 Andrews, George	1762	L1	W46	W49	L22	W17	---	3
27 Mullis, Don	1689	L9	L18	W40	W47	L24	W37	3
28 Jurjevich, Charles	1764	L4	L39	W46	L23	W40	W33	3
29 MacDonald, Ross	1692	W45	L8	W20	L9	D32	LF	2½
30 Biesiada, Keith	1742	L13	W48	L12	D19	W44	L18	2½
31 Bert, Alison	1736	L22	W52	W25	D7	L10	L19	2½
32 Pressley, James	1757	L2	W35	L9	W48	D29	L17	2½
33 Cobb, Jeffrey	1384	L19	D21	W41	L25	W47	L28	2½
34 Likens, Rick	1734	½-B	L10	L43	W41	W45	L20	2½
35 Gillespie, Curtis	1633	L14	L32	W50	L24	W48	D38	2½
36 Rundlett, Stuart	2029	L47	W53	W17	D18	---	---	2½
37 Stinson, Marcus	1696	L6	W41	W19	L12	L25	L27	2
38 Smith, Jr., John	1724	W7	L4	D14	L15	L20	D35	2
39 Tate, William J.	1686	L12	W28	W47	L8	---	---	2
40 Harley, Thomas	1589	L42	L24	L27	Bye	L28	W50	2
41 Meidinger, Charles	1818	L49	L37	L33	L34	W50	W43	2
42 Todd, Alan	1776	W40	D15	L10	L17	L23	---	1½
43 King, Douglas	1718	L5	D45	W34	L14	L19	L41	1½
44 McCarthy, Brian	1698	W52	L5	L18	D20	L30	---	1½
45 Farr, Roy, T.	1914	L29	D43	W23	L21	L34	---	1½
46 Raney, Paul F.	1670	L25	L26	L28	D50	Bye	---	1½
47 Williams, Robert	1766	W36	L17	L38	L27	L33	---	1
48 Maness, Greg	1284	L20	L30	Bye	L32	L35	---	1
49 Brookshear, Tim	1616	W41	L6	L26	---	---	---	1
50 Southerland, Gary	1709	L8	L7	L35	D46	L41	L40	½
51 Stevens, William	1666	D10	L11	L21	---	---	---	½
52 Sherman, Stan	1933	L44	L31	---	---	---	---	0
53 Bacon, Mike	1727	L16	L36	---	---	---	---	0

RESERVE SECTION

1 Doxey, Clem M.	1415	W34	D36	W5	W20	W19	W2	5½
2 Edwards, Herbert	1587	W14	W41	W9	W19	W10	L1	5
3 Palter, Richard	1472	W31	D37	D32	W21	W11	W10	5

NAME	RTNG	RD1	RD2	RD3	RD4	RD5	RD6	TOT
4 Bezviner, Larry	1578	W35	L20	W31	W14	W8	W7	5
5 Ford, Van	1361	W6	D10	L1	W36	W16	W19	4½
6 Jones, Eugene	1591	L5	W38	W36	D29	W20	W12	4½
7 Easter, Ron	1456	W21	W27	L20	W32	W13	L4	4
8 Mingle, James	1394	W13	L19	W27	W23	L4	W21	4
9 Ammons, Bobby H.	1441	W40	W22	L2	L13	W29	W20	4
10 Choastie, Steven	1559	W24	D5	W29	W12	L2	L3	3½
11 Goodwin, James T.	1430	WF	W23	L19	W22	L3	D18	3½
12 Serra, Glen S.	1389	D17	W33	W37	L10	W24	L6	3½
13 DeLange, Michael	UNR	L8	W18	W25	W9	L7	D24	3½
14 Sheppard, Dallas	1345	L2	W34	W39	L4	W22	D15	3½
15 Cox, Nicholas	1541	W28	L29	L21	W31	W32	D14	3½
16 Jones, Walter	1538	L29	W40	D24	W37	L5	W28	3½
17 Thompson, Carl	UNR	D12	L32	W38	L24	W37	W29	3½
18 Gorin, Steven B.	1333	L19	L13	W40	W39	W26	D11	3½
19 Koch, Charles T.	1583	W18	W8	W11	L2	L1	L5	3
20 Schneider, Jay L.	1394	W26	W4	W7	L1	L6	L9	3
21 Ryan, Jackie	1205	L7	WF	W15	L3	W25	L8	3
22 Feldman, Warren	1031	W44	L9	W41	L11	L14	W36	3
23 Wise, Buddy W.	UNR	W25	L11	W33	L8	L28	W32	3
24 Spears, Matthew	1307	L10	W26	D16	W17	L12	D13	3
25 Campfield, Allan	1362	L23	W28	L13	W34	L21	W33	3
26 Ford, Julian	UNR	L20	L24	W35	W41	L18	W31	3
27 Dressel, Fred F.	1082	WF	L7	L8	LF	W40	D30	2½
28 Berry, John T.	1282	L15	L25	D30	W38	W23	L16	2½
29 Zindler, Dean	1278	W16	W15	L10	D6	L9	L17	2½
30 Brand, Robert F.	1455	L37	L31	D28	D33	W36	D27	2½
31 Floyd, Larry T.	1271	L3	W30	L4	L15	W34	L26	2
32 Castro, Arnold	1208	½-B	W17	D3	L7	L15	L23	2
33 Weathers, Jr., Jim	1184	½-B	L12	L23	D30	W35	L25	2
34 Siffri, George J.	1114	L1	L14	Bye	L25	L31	W39	2
35 White, John E.	1325	L4	L39	L26	W42	L33	W38	2
36 Linebaugh, Neil	965	Bye	D1	L6	L5	L30	L22	1½
37 Haisten, Robert	1200	W30	D3	L12	L16	L17	---	1½
38 Harris, Larry	UNR	½-B	L6	L17	L28	W39	L35	1½
39 Edwards, Robert	UNR	L41	W35	L14	L18	L38	L34	1
40 Mingle, Trey	1187	L9	L16	L18	Bye	L28	---	1
41 Raglin, Bruce K.	1394	W39	L2	L22	L26	---	---	1
42 Kayma, Tom S.	1431	-	-	-	L35	Bye	-	1
43 Bean, Vern W.	714	-	-	W47	-	-	-	1
44 Blakeman, Carl	1400	L22	LF	-	-	-	-	0
45 Powers, John J.	1402	LF	-	-	-	-	-	0
46 Powers, Chris	1127	LF	-	-	-	-	-	0
47 Kyle, Jay	529	-	-	L43	-	-	-	0

J.H.S./ELEM. CHAMPIONSHIPS

1 Kayma, Tom	1431	W5	W8	W2	W4	4
2 Eddins, Steven L.	930	W7	W4	L1	W5	3
3 Robinson, Bill	498	WF	L5	W8	W9	3
4 Scharrif, Michael	1261	W6	L2	W9	L1	2
5 Bean, Joseph	854	L1	W3	W6	L2	2
6 Robinson, Cheves	596	L4	W7	L5	Bye	2
7 Geigerman, Carolyn	UNR	L2	L6	Bye	W8	2
8 Eads, Stewart	1208	W9	L1	L3	L7	1
9 Kyle, Jay	529	L8	Bye	L4	L3	1
10 Campfield, David	1137	LF	-	-	-	0

TORNADO A

1 Sherman, Stan	1933	W7	W2	W5	L3	3
2 Lorentzson, David	1724	W4	L1	W9	W5	3
3 Waters, Tom	1627	W10	L5	W6	W1	3
4 Roberts, John	1369	L2	W8	W7	W9	3
5 Stremel, John	1750	W9	W3	L1	L2	2
6 Keeper, Manual	1362	W8	L7	L3	W10	2
7 Kayma, Tom S.	1431	L1	W6	L4	D8	1½
8 Felts, Ed.	1701	L6	L4	W10	D7	1½
9 Booth, Julian B.	1379	L5	W10	L2	L4	1
10 Jeffers, David C.	1315	L3	L9	L8	L6	0

TORNADO B

1 Eddins, Steven L.	930	W3	W9	W2	W4	4
2 Martinez, Tony	1088	W10	W6	L1	W5	3
3 Brandt, Art	UNR	L1	W10	W6	D8	2½
4 Bean, Joseph	854	D9	W7	D5	L1	2
5 Freet, Paul J.	UNR	D7	W8	D4	L2	2
6 Campfield, David	1137	W8	L2	L3	W7	2
7 Southern, Houston	920	D5	L4	Bye	L6	1½
8 Bean, Vern W.	714	L6	L5	W9	D3	1½
9 Maness, Greg	1284	D4	L1	L8	-	½
10 Cintron, Samuel	UNR	L2	L3	-	-	0

NOTICE

PAIRING CARDS!! A new, dual purpose pairing card at less than USCF prices. Made with the tournament organizer in mind! \$ 2.95 for 100 For free sample send stamped envelope to ICI, 3055 General Lee Rd. Macon, Georgia 31204.

C3 TEAM TOURNAMENT #4
November 25, 1978
Warminster, Pa.

TEAM STANDINGS

Player	Rtng	1	2	3	TOT
1 Penn State Univ. (players 1-5)		W4	L3	L6	1
2 Franklin H.S. (players 6-10)	D5	W8	W3	2½	
3 Centennial Sch.Sys. (players 11-15)	W6	W1	L2	2	
4 No-Names (players 16-20)	L1	W5	W8	2	
5 Vaux JHS #1 (players 21-25)	D2	L4	W7	1½	
6 Central H.S. (players 26-30)	L3	W7	W1	2	
7 Vaux JHS #2 (players 31-35)	L8	L6	L5	0	
8 Douglas Elem Sch.	W7	L2	L5	1	

INDIVIDUAL RESULTS

1 Dennis Baluk	1789	W16	L11	F26	1
2 Greg Quinn	1626	D17	W12	D27	2
3 Jeff Conrad	1422	W18	W13	F28	2
4 Dave Oliver	1202	W19	L14	L29	1
5 Homer Sharp	1072	W20	L15	L30	1
6 Robert Robinson	1401	W21	W36	L11	2
7 Vern Stanley	1362	L22	W37	W12	2
8 Casimir Krakowski	UNR	L23	W38	L13	1
9 Eugene Harris	1140	W24	L39	W14	2
10 Ken Jiles	1081	D25	W40	W15	2½
11 Chris Yaure	1531	W26	W1	W6	3
12 Nancy Walczak	1374	L27	L2	L7	0
13 Mike Panzer	1217	W28	L3	W8	2
14 Len Speakman	1096	W29	W4	L9	2
15 Vince Sereni	914	L30	W5	L10	1
16 Otis Burgess	2001	L1	W21	W36	2
17 Mike Sherman	1648	D2	W22	W37	2½
18 Dave Ost	986	L3	L23	W38	1
19 Ed Ost	949	L4	W24	W39	2
20 Mike Proctor	758	L5	L25	L40	0
21 Ben Green	1375	L6	L16	W31	1
22 George Graham	1326	W7	L17	W32	2
23 Mike Allen	1156	W8	W18	W33	3
24 Steven Jiles	1076	L9	L19	W34	1
25 Anthony Carmichael	1066	D10	W20	W35	2½
26 Jeff McCowan	1389	L11	W31	W35	2
27 Carl Gooding	1363	W12	W32	D2	2½
28 Donald Minus	1273	L13	W33	W33	2
29 Mike Washington	UNR	L14	W34	W4	2
30 John Washington	UNR	W15	W35	W5	3
31 Andre Leftwich	UNR	L36	L26	L21	0
32 Dan Jackson	UNR	L37	L27	L22	0
33 Mike Thomas	NEW	L38	L28	L23	0
34 Lionel Jordan	NEW	W39	L29	L24	1
35 Stefan Hrinkd	NEW	L40	L30	L25	0
36 Jeff Moore	1070	W31	L6	L16	1
37 Tim Jiles	1016	W32	L7	L17	1
38 Alvin Green	980	W33	L8	L18	1
39 Ron Sanders	815	L34	W9	L19	1
40 Daniel Lewis	642	W35	L10	W20	2

C3 Swiss #39
December 2, 1978
Warminster, Pa.

1 Riddle, Ira Lee	1153	W6	L4	W8	2
2 Rimmer, Todd	1099	W7	W5	D4	2½
3 Ost, David	986	L8	W7	W6	2
4 Ost, Edward	949	W9	W1	D2	2
5 Goldenberg, Dave	887	W10	L2	W9	2
6 Wade, Mike	UNR	L1	W8	L3	1
7 Allen, Mitchell	UNR	L2	L3	W10	1
8 Schroeder, Roland	NEW	W3	L6	L1	1
9 Loewenster, Dan	NEW	L4	W10	L1	1
10 Grobman, Mitch	UNR	L5	L9	L7	0

SEPTEMBER QUICK SWISS
Alanta, Ga. Sept. 30 78
Section A

1 Ulysses Martin	1828	W4	W3	D2	2½
2 David Lee	1690	W6	W5	D1	2½
3 Stan Sherman	1887	W5	L1	W6	2
4 Ronnel Shaw	1157	L1	W6	L5	1
5 Allan Campfield	1362	L3	L2	W4	1
6 David Campfield	1137	L2	L4	L3	0

Player Rtng 1 2 3 4 TOT

1 Julian Ford	UNR	W5	W4	W2	3
2 Jeff Hasty	1026	W4	D3	L1	1½
3 Robert Edwards	UNR	Bye	D2	L4	1½
4 Charles Sealock	UNR	L2	L1	W3	1
5 Ted Mazo	UNR	L1	Bye	WD	1

Section B

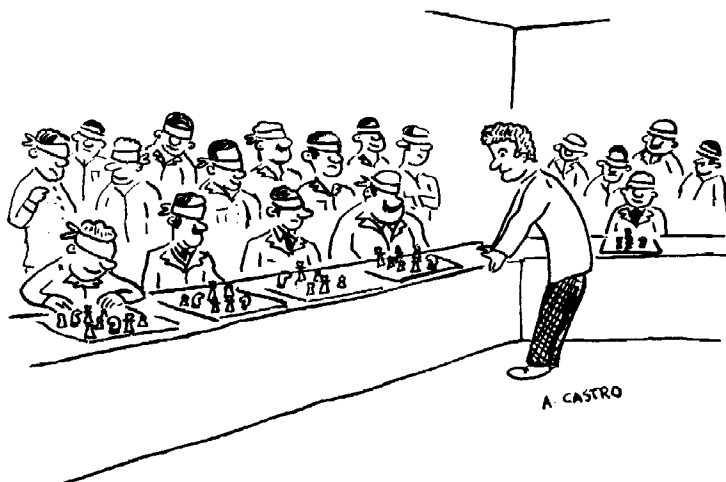
1 William Ruiz	UNR	W14	W6	D2	½
2 William Scott	1994	W11	W7	D1	2½
3 Stan Sherman	1887	D8	W5	W4	2½
4 Petrone Woodward	UNR	W13	W12	L3	2
5 Eugene Jones	1591	W10	L3	W9	2
6 Ulysses Martin	1828	W12	L1	W8	2
7 Ed Felts	1707	W9	L2	W11	2
8 Roderick Debejar	1360	D3	W13	L6	1½
9 Art Brant	UNR	L7	W10	L5	1
10 Robert Edwards	UNR	L5	L9	W12	1
11 Jeff Hasty	1026	L2	Bye	L7	1
12 Wayne Andrews	UNR	L6	L4	L10	0
13 Gary B. King	1530	L4	L8	WD	0
14 Ronald Allen	UNR	L1	Withdrew		0

SATURDAY NIGHT SPECIAL
September 30, 1978
Atlanta, Georgia

USCF DELEGATES
FLORIDA

Gilbert Cantrell	
Arnold Denker	
Egon Teodorson	
ALTERNATES	
Dr. Juan Gonzalez	
11500 N.W. 58th Ct.	
Hialeah, Fl. 33012	
Alfonso Ruiz	
221 N.E. 48th Terr.	
Miami, Fl. 33137	
Nick Paleveda	
4014 San Nicholas	
Tampa, Fl. 33609	
Gary Sanders	
Mark Solomon	
Larry Storch	
Charles S. Turk	
ALTERNATE VOTING MEMBERS	
Doug Carpenter	
John Claxton	
3856 Neptune Dr. S.E.	
St. Petersburg, Fl. 33705	
Howard Gittelson	
7390 N.W. 38th St. #3	
Hollywood, Fl. 33024	

NOTE: Other addresses on page 2



NOVEMBER TORNADO
NOV. 17, 78 Atlanta, Ga.

Player	RTNG	1	2	3	4	TOT
1 Ulysses Martin	1767	W5	L4	W7	W3	3
2 Ed Felts	1701	L3	W8	W5	W4	3
3 Barry Barrentine	1767	W2	D7	W4	L1	2½
4 David Lorentzson	1724	W6	W1	L3	L2	2
5 David Lee	1690	L1	W6	L2	W8	2
6 Michael Day	1862	L4	L5	W8	W7	2
7 Ralph Hawkins	1733	W8	D3	L1	L6	1½
8 Curtis Gillespie	1633	L7	L2	L6	L5	0

Section B

1 Bob Bassett	1431	W8	D6	W4	W5	3½
2 Allan Campfield	1362	L6	W8	W7	W4	3
3 Robert Radford	UNR	L5	W7	W8	W6	3
4 Bernie Hathcock	1569	W7	W5	L1	L2	2
5 Tony Martinez	1088	W3	L4	W6	L1	2
6 Steven Eddins	UNR	W2	D1	L5	L3	1½
7 Houston Southern	920	L4	L3	L2	W8	1
8 Charles Sealock	UNR	L1	L2	L3	L7	0

USCF DELEGATES
Georgia

Michael P Decker	
ALTERNATES	
Stephen Schneider	
Kamalaker Raut	
Alison Bert	
Terry Leas	
ALTERNATE VOTING MEMBERS	
W.A. Scott	
Spencer Hurd	
Lew Martin	

C3 Swiss #37
October 21, 1978

1 Bob Cohen	1444	W4	W2	W3	3
2 B. Feld	NEW	W5	L1	L6	1
3 Dave Ost	986	W6	W4	L1	2
4 Mike Wade	UNR	L1	L3	W5	1
5 Mike Cohen	UNR	L2	L6	L4	0
6 M. Grobman	UNR	L3	W5	W2	2
7 M. Allen	NEW	L8	-	-	0
8 S Zachwieja	1041	W7	-	-	1

C3 Swiss #38
October 21, 1978

1 Ed McKenney	1568	W4	W3	W5	3
2 Todd Rimmer	1099	D5	L7	L3	½
3 L Speakman	1096	W6	L1	W2	2
4 Ed Ost	949	L1	D5	L8	½
5 D Goldenberg	887	D2	D4	L1	1
6 M Allen	NEW	L3	L8	L9	0
7 S Zachwieja	1041	-	W2	-	1
8 B Feld	NEW	-	W6	W4	2
9 Dave Ost	986	-	-	W6	1

MIAMI CHESS CLUB THANKSGIVING TOURNAMENT
November 24-26

Open Section

Player	Rtng	1	2	3	4	5	TOT
1 Arnold Denker	2347	D13	D15	W19	W11	W9	4
2 Lawrence Kaufman	2326	W20	W5	D3	W6	D4	4
3 Leroy Collins	1902	W23	W18	D2	D4	W10	4
4 David Brummer	2081	W10	D8	W9	D3	D2	3½
5 Thomas Benham	1901	W17	L2	D12	W19	W14	3½
6 David Dukes	2068	D21	W13	W8	L2	D7	3
7 Mark Bohannon	1993	W16	L9	D11	W13	D6	3
8 Thomas Simmons	1899	W22	D4	L6	D12	W16	3
9 Robert McSorley	1854	W24	W7	L4	W15	L1	3
10 Steve Andrews	1853	L4	W23	W18	W16	L3	3
11 Eric Solomon	1775	W14	D19	D7	L1	W18	3
12 Richard Fatigati	1558	L19	WF	D5	D8	W15	3
13 Eric Rosenthal	1894	D1	L6	W21	L7	W22	2½
14 John Gavora	2000	L11	W22	L15	W17	L5	2
15 O.R. Graham	1843	Bye	D1	W14	L9	L12	2
16 James Heidenreich	1730	L7	W21	W20	L10	L8	2
17 Edward Hinson	UNR	L5	L20	WF	L14	W21	2
18 John Mobley	NEW	Bye	L3	L10	W23	L11	2
19 Santiago Chan	1917	W12	D11	L1			1½
20 Stephan Riddle	1860	L2	W17	L16			1
21 Robert Eastwood	1809	D6	L16	L13	D22	L17	1
22 Ronald Mastronardi	1438	L8	L14	D23	D21	L13	1
23 Randy Bullock	UNR	L3	L10	D22	L18		½
24 Juan Gonzales	2200	L9					0

AMATEUR SECTION

1 Miles Ardaman	1613	W24	W4	W9	W12	D2	4½
2 Nick Schoonmaker	1573	D10	W11	W19	W5	D1	4
3 Michael Gatlin	1525	W19	D13	D11	W9	W12	4
4 Gerald McCombs	1483	W26	L1	W17	W10	W7	4
5 Gilbert Cantrell	1552	W25	W6	D12	L2	W16	3½
6 Carlos Martinez	1652	W21	L5	D16	W20	D8	3
7 James Herring	1610	D22	W25	D10	W18	L4	3
8 Mark Rosenberg	NEW	L9	W21	D15	W13	D6	3
9 Zygmund Mayer	1765	W8	W14	L1	L3	W9	3
10 Andre Sergeant	1785	D2	W20	D7	L4	D14	2½
11 Hyman Kabat	1753	D20	L2	D3	W23	D17	2½
12 Robert Foutch	1726	W23	W15	D5	L1	L3	2½
13 Mike Tannenbaum	1644	W16	D3	L20	L8	W21	2½
14 William Booth	1580	W17	L9	L18	W22	D10	2½
15 David Small	1576	W18	L12	D8	L16	W20	2½
16 Louis Laufer	1491	L13	W22	D6	W15	L5	2½
17 Manzor Martinez	NEW	L14	W26	L4	W24	D11	2½
18 Douglas Miller	UNR	L15	W23	W14	L7		2
19 John Strickhouser	1712	L3	W24	L2	D21	L9	1½
20 Leon Blumenthal	1540	D11	L10	W13	L6	L15	1½
21 Donald STONE	1503	L6	L8	W24	D19	L13	1½
22 Jim Blackwood	UNR	D7	L16	L23	L14	Bye	1½
23 Fred Newton	1533	L12	L18	W22	L11	L24	1
24 Russell Post	1446	L1	L19	L21	L17	W23	1
25 James Thiele	1760	L5	L7				0
26 Dan Perry	1631	L4	L17				0

NOVICE SECTION

1 Stephen Goulette	UNR	W31	W10	W6	W11	W3	5
2 Ignacio Gomez	UNR	W14	W4	D8	W19	W10	4½
3 Michael Spencer	1465	W25	W38	W29	W5	L1	4
4 John Allman	1444	W34	L2	W17	W15	W14	4
5 Karl Skjersaa	1421	W27	W39	W20	L3	W18	4
6 Evan Jacobs	1483	W18	W28	L1	D8	W22	3½
7 Robert Whatley	682	L12	W32	D13	W33	W21	3½
8 Jeffrey Preston	UNR	W15	W16	D2	D6	D11	3½
9 Kevin Walkinshaw	UNR	W37	W17	L11	D21	W23	3½
10 Chris Williams	1428	W26	L1	W27	W16	L2	3
11 Arwin Prieto	1416	D22	W30	W9	L1	D8	3
12 Thomas Kao	1403	W7	L29	W26	L18	W27	3
13 David Flor	1383	L37	W25	D7	W20	D19	3
14 Jerome Draznin	1325	L2	W34	W28	W29	L4	3
15 Edward Shade	1246	L8	W40	W39	L4	W28	3
16 Jerry Wampler	1239	W40	L8	W30	L10	W26	3
17 Howard Gittelson	1206	W23	L9	L4	W39	W33	3
18 Gwen Ruffin	1195	L6	W42	W23	W12	L5	3
19 Douglas McCoy	1000	D41	W24	W22	L2	D13	3
20 Deepak Khistani	NEW	W33	W21	L5	L13	W35	3
21 George Laiacona	1257	W35	L20	W38	D9	L7	2½
22 Robert Poteete	1011	D11	W41	L19	W35	L6	2½
23 Joe Martin	1496	L17	W37	L18	W34	L9	2
24 Cyane Berning	1327	Bye	L19	L35	W30	D31	2
25 R.J. Robbins	1150	L3	L13	L31	W42	W36	2
26 Joseph Sierra	1099	L10	W31	L12	W32	L16	2
27 Harry Klug	1082	L5	W36	L10	W31	L12	2
28 Joseph Crosswhite	UNR	W42	L6	L14	W37	L15	2
29 Paul Holmes	UNR	W32	W12	L3	L14		2
30 Randy Maiolo	NEW	Bye	L11	L16	L24	W37	2
31 Bob Hodge	1323	L1	L26	W25	L27	D24	1½
32 Gerard Boutin	1267	L29	L7	W40	L26	D34	1½
33 David King	1247	L20	D35	W41	L7	L17	1½

Player

34 John Stark	1128	L4	L14	W36	L23	D32	1½
35 Henry Jones	UNR	L21	D33	W24	L22	L20	1½
36 Stephen Mixsell	1307	L39	L27	L34	W40	L25	1
37 Luis Flecha	1214	L9	L23	W42	L28	L30	1
38 Vincent Diglio	NEW	W13	L3	L21			1
39 Loren Hintz	NEW	W36	L5	L15	L17		1
40 Joe Tyler	UNR	L16	L15	L32	L36	Bye	1
41 Mike Downey	1406	D19	L22	L33			½
42 Martin Mulhall	1392	L28	L18	L37	L25		0

The Thrid Annual Tucker Classic
September 1978

1 Vaughan, Stan	1990	W18	D13	D22	W14	D3	3½
2 Murthy, P L N	2074	W20	W25	W8	W11	D4	4½
3 Smeltzer, Jeffrey	1944	W29	W15	W12	D4	D1	4
4 Hunt, Steven C	1930	W39	W7	W9	D3	D2	4
5 Vermilya, James W	1841	W30	L22	W13	W19	W15	4
6 Barrentine, Barry	1762	W50	W24	L11	W27	W17	4
7 Mullis, Don	1704	W46	L4	W29	W20	W11	4
8 Watson, Byron	1780	W32	W23	L2	W22	D10	3½
9 Smith, jr John W	1721	W33	W19	L4	D23	W22	3½
10 Schneider, Jay L	1510	W16	L	W41	W12	D8	3½
11 Radin, Jared P	1888	W40	W14	W6	L2	L7	3
12 Felts, Edward A	1754	W43	W27	L3	L10	W23	3
13 Lee, David V	1695	W21	D1	L5	D24	W29	3
14 Martin, Verl L	1595	W47	L11	W30	L1	W26	3
15 Fiekowsky, Richard	1589	W26	L3	W40	W	L5	3
16 Bell, William Kenn	1418	L10	Bye	L23	W31	W25	3
17 Boutwell, George W	1358	W37	L20	W31	W25	L6	3
18 Harvey, Lee B	1253	L1	L34	W37	W32	W33	3
19 Trent, John	1290	W28	L9	W32	L5	W34	3
20 Zindler, Dean J	1288	L2	W17	W48	L7	W37	3
21 Wise, Buddy	1084	L13	L31	W50	W40	W27	3
22 Hathcock, Bernard	1593	W52	W5	D1	L8	L9	2½
23 Jackson, Jim	1543	W36	L8	W16	D9	L12	2½
24 Goodwin, James	1432	W48	L6	L36	D13	W39	2½
25 Bartimus, N R	1704	W34	L2	W39	L17	L16	2
26 Woodard, Petrone	1447	L15	L39	W43	W30	L14	2
27 Mingle, James	1366	W31	L12	W34	L6	L21	2
28 Ford, Julian B	1147	L19	L	Bye	L29	L30	1
29 Gillooly, John R	1261	L3	W46	L7	W28	L13	2
30 Ziyad, Yusuf A	1149	L5	W50	L14	L26	W28	2
31 Brandt, Art	1118	L27	W21	L17	L16	W43	2
32 Jones, Sydney	1112	L8	W41	L19	L18	W40	2
33 Eddins, Steven L	952	L9	L36	W52	W45	L18	2
34 Morrison, Jeffrey	942	L25	W18	L27	W42	L19	2
35 Robinson, Cheves	762				W47	W46	2
36 Folwell, Harry	1436	L23	W33	W24	L		2
37 Matthews, Bryan T	1014	L17	W47	L18	W44	L20	2
38 Moffitt, Steven D	2025					W49	1
39 Bryant, Wesley	1256	L4	W26	L25	L	L24	1
40 Field, Thomas J	1180	L11	W52	L15	L21	L32	1
41 Schneider, Stephen	1190	Bye	L32	L10			1
42 Haraka, Joe	1061				L34	W50	1
43 Andrews, Wayne L	938	L12	L48	L26	W50	L31	1
44 Symbas, Peter J	947				L37	W47	1
45 Miller, Ted	586				L33	W51	1
46 Cramer, Scott	762	L7	L29	L47	W51	L35	1
47 Bath, David	775	L14	L37	W46	L35	L44	1
48 Giordano, Tony	1075	L24	W43	L20			1
49 Miller, Sandy	2022					L38	1
50 Mazo, Ted	723	L6	L30	L21	L43	L42	0
51 Robinson, Bill	499				L46	L45	0
52 Hayes, jr Henry T	834	L22	L40	L33			0

END OF AUTUMN OPEN
Atlanta, Ga. 1978

1 Stan Sherman	1933	W17	W3	D2	W12	W4	4½
2 P L N Murthy	2010	W18	W10	D1	W4	D3	4
3 Southerland, Gary	1709	W20	L1	W14	W10	D2	3½
4 Schultz, Don	1926	W13	W9	W7	L2	L1	3
5 Clifford, Charles	1655	W21	L12	W18	D6	D10	3
6 Campbell, Robert	1830	D11	W21	D12	D5	D7	3
7 Garner, Mack	2068	W14	D8	L4	W17	D6	3
8 Martin, Ulysses	1767	W15	D7	L10	D9	W13	3
9 Lee, Naird	1690	W16	L4	D17	D8	W20	3
10 Vermilya, James	1830	W19	L2	W8	L3	D5	2½
11 Mingle, James	1394	D6	W14	W13	W18	F	2½
12 Scott, Joseph	1841	B-½	W5	D6	L1	F	2
13 Kayma, Tom	1431	L4	W16	L11	W75	L8	2
14 Gillespie, Curtis	1685	L7	W11	L3	W19	F	2
15 Eddins, Steven	UNR	L8	L18	W20	L13	Bye	2
16 Hilton, Bobby	UNR	L9	L13	Bye	L20	W17	2
17 Wheeler, David	1434	L1	W20	D9	L1	L16	1½
18 Cohen, Stephen	1477	L2	W15	L5	L11	F	1
19 Schneider, Jay	1394	L10	Bye	F	L14	F	1
20 Ford, Julian	UNR	L3	L17	L15	W16	L9	1
21 Vaughan, Stan	2021	L5	L6	Withdrew			0

ANSWERS
TO
CROSSWORD

ACROSS

- check
- FIDE
- bat
- 1 miner
- lean
- star
- Konig
- Hef
- DSC
- Var
- I am
- as
- A. Saidy
- eat
- Latne
- S.L.R.R.
- go boo
- Kim Commons
- sted
- sews

DOWN

- cb
- halo
- Eton
- Kingside
- Fish
- Inter
- Deaf
- Err
- Aid
- Kavaleks
- Cay
- Astros
- ASA
- Rate me
- Aarons
- I.H.
- Elbow
- Some
- GMS
- It
- cd
- South Carolina
- TOP 20
- Oct. 78

- John Dunning 2253
- Fred Allsbrook 2208
- Klaus Pohl 2187
- Peter Hudson 2032
- M. Anderson 2030
- Stan Vaughan 2021
- David Summer 2011
- M. Chappell 2004
- Lee Hyder 1983
- R. Spitzer 1975
- Jeff Smeltzer 1944
- R. Ferguson 1907
- Tim Williams 1894
- Richard Cohen 1877
- Milton Marder 1873
- Charles Braun 1853
- Robert Webb 1852
- S. Mathews 1845
- Dewey Maynard 1844
- Ed McCalley 1835

END OF AUTUMN TORNAO
Atlanta, Ga. 1978

Section A

Player	Rtng	1	2	3	TOT
1 David Lorentzson	1724	W8	W4	W2	3
2 Robert Campbell	1830	W6	W3	L1	2
3 O Al Hamilton	1770	W7	L2	W6	2
4 Clell Wood	1512	D4	L1	W7	1½
5 Allan Campfield	1362	D4	L6	W8	1½
6 Garry Hialip	1482	L2	W5	L3	1
7 Robert Bassett	1431	L3	W8	L4	1
8 David Johnson	1373	L1	L7	L5	0

Section B

1 Ronald Radford	UNR	W7	W4	W3	3
2 Manuel Keepler	UNR	D5	W9	W6	2½
3 Bruce Duncel	691	W10	W6	L1	2
4 Houston Southern	920	W8	L1	W7	2
5 John Berry	1282	D2	L7	W8	1½
6 Arnold Castro	1208	W9	L3	L2	1
7 Lewis Miller	1126	L1	W5	L4	1
8 Charles Dealock	UNR	L4	W10	L5	1
9 Daniel Klenkort	UNR	L6	L2	W10	1
10 Richard Tower	UNR	L3	L8	L9	0

T.G.I. FRIDAY TORNAO
November 4, 1978
Atlanta, Ga.

1 Stan Sherman	1933	W8	W10	D2	2½
2 Ulysses Martin	1767	W16	W9	D1	2½
3 P.L.N. Murthy	2010	W12	D5	W4	2½
4 Curtis Gillespie	1633	W14	W11	L1	2
5 Byron Watson	1742	W6	D3	D9	2
6 Phil Truelove	1245	L5	W14	W10	2
7 Daniel Klenbort	920	L1	W13	W12	2
8 Houston Southern	1622	W7	L2	D5	1½
9 Gary B King	1425	W13	L1	L6	1
10 Bob Bassett	1379	W15	L4	L8	1
11 Julian Booth	1315	L3	W15	L7	1
12 David Jeffers	UNR	L10	L7	W15	1
13 Wayne Andrews	1137	L4	L6	Bye	1
14 Yusuf Ziyad	UNR	L11	L12	L13	0
15 James Franklin	UNR	L2	Withdrew		0
16 Jerry Adams					

METRO COLUMBUS CHAMPIONSHIP
November 11, 1978
Columbus, Georgia

1 John C. Jones	1817	W8	W7	W5	3
2 Denis P. Druash	1885	L5	W3	W4	2
3 Mel Cooper	UNR	W6	L2	W8	2
4 William Edwards	1195	W9	D5	L2	1½
5 J. C. Suddeth	1638	W2	D4	L1	1½
6 Alex C. Martin	1577	L3	W9	D7	1½
7 Raymond C. Quillian	1651	W10	L1	D6	1½
8 Carl Mackay	1245	L1	W10	L3	1
9 Clarence Cooper	1680	L4	L6	W10	1
10 Richard E. Rodgers	1058	L7	L8	L9	0

JULY QUICK SWISS
July 30, 1978
Atlanta, Ga.

1 Banks, Marvin	1574	W7	D2	W3	2½
2 King, Gary	1530	W4	D1	W5	2½
3 Maurer, Curt	1759	W8	W6	L1	2
4 Pressley, James	1725	L2	D7	W6	1½
5 Vaughan, Stan	2065	L6	W8	L2	1
6 Blaydes, Frank G	1603	W5	L3	L4	1
7 Kelly, Dave L	1523	L1	D4	D8	1
8 Cox, Nicholas	1550	L3	L5	D7	½

Section B

1 James Goodwin	1383	W6	W4	W3	3
2 Mark Dennett	1300	W13	W9	W11	3
3 Mark Derrick	1370	W7	W5	L1	2
4 Homer Archer	1249	W12	L1	W8	2
5 Tony Martinez	1097	Bye	L3	W9	2
6 James McAleer	UNR	L1	W8	W10	2
7 William McAleer	UNR	L3	W12	W13	2
8 Gerald Franklin	1374	W11	L6	L4	1
9 Houston Southern	962	W10	L2	L5	1
10 Drew Dekle	468	L9	W13	L6	1

Player	Rtng	1	2	3	4	5	TOT
11 Julian Booth	1439	L8	Bye	L2			1
12 Chaves Robinson	647	L4	L7	Bye			1
13 Bill Robinson	537	L2	L10	L7			0

SOUTH CAROLINA CLOSED CHAMPIONSHIP
Columbia, S.C.
November 1978

1 Summer, Dr. David P.	2011	W13	W6	L4	L10	-	2
2 Hyder, Lee	1983	W14	W7	W5	W3	W4	5
3 Spitzer, Richard A.	1975	W15	W12	W22	L2	L10	3
4 Ferguson, Randal G.	1907	W16	W11	W1	L5	L2	3
5 Cohen, Richard	1877	W17	W25	L2	W4	W12	4
6 Marder, Milton D.	1873	W18	L1	L16	L22		1½
7 Purvis, Lee D.	1848	W19	L2	L12	W20	-	2
8 Maynard, Dewey G.	1844	L20	L17	W21	W23	L22	2
9 Webb, W. Robert	1811	D21	L22	L13	L18	L23	½
10 Hutchins, David Q.	1780	D22	D21	W18	W1	W3	4
11 Hart, Patrick D.	1775	W23	L4	L17	L21	D20	1½
12 Tinkler, Paul E.	1736	W24	L3	W7	W14	L5	3
13 Simmons, Robert M.	1728	L1	D18	W9	W16	D17	3
14 Hill, Jimmy	1706	L2	W19	W20	L12	W24	3
15 Morse, Donald A.	1690	L3	W24	W25	L17	D16	2½
16 Abrams, Harry Lee	1679	L4	W23	W6	L13	D15	2½
17 Jackson, Philip F.	1678	L5	W8	W11	W15	D13	3½
18 Reed, Winston D.	1597	L6	D13	L10	W9	L21	1½
19 Blanks, Lindsay E.	1587	L7	L14	L23	Bye	D6	1½
20 Taffinder, Douglas D.	1580	W8	F	L14	L7	D11	1½
21 Berry, Jack	1573	D9	D10	L8	W11	W18	3
22 Williams, Jim	1508	D10	W9	L3	W6	W8	3½
23 Fisher, Wade F.	1440	L11	L16	W19	L8	W9	2
24 Gadoury, Donald W.	1407	L12	L15	Bye	W25	L14	2
25 Morgan, Jimmy	1278	Bye	L5	L15	L24	-	1

Booster Section

1 Key, Earl R jr	1573	W7	L3	W11	L10	L8	2
2 Strickland, Robert F.	1546	L8	D12	L10	W9	L5	1½
3 Cantrell, Albert M.	1540	W9	W1	W8	L4	D10	1½
4 Mahaffey, Marion E	1540	D10	D8	W7	W3	W6	4
5 Smith, Gene	1532	D11	D10	D12	L6	W2	2½
6 Holmes, Douglas R.	1524	D12	L11	W9	W5	L4	2½
7 Parker, Wayne R.	1454	L1	W9	L4	W12	W11	3
8 West, James E.	1424	W2	D4	L3	D11	W1	3
9 Lewis, Leroy E.	1292	L3	L	L6	L2	D12	½
10 Muller, Dwayne K.	1267	D4	D5	W2	W1	D3	3½
11 Pendleton, Andrew	1170	D5	W6	L1	D8	L7	2
12 Stoltz, Robert M.	UNR	D6	D2	D5	L7	D9	2

Reserve Section

1 Barr, James S.	1395	W14	W12	L2	L5	W10	3
2 Keepler, Manuel	1362	W15	W11	W3	D8	D5	4
3 Dodgen, William H.	1359	D16	W23	D5	W10	W17	4
4 Piephoff, Stan H.	1318	L17	W20	W14	L13	L12	2
5 Bland, William R jr	1303	W18	W13	D3	W1	D2	4
6 Miller, George W.	1290	L19	L21	W20	W23	W16	3
7 Kemmerlin, George W.	1234	D20	D16	W15	L17	W21	3
8 Erb, David	1220	W21	D17	W19	D2	W13	4
9 Houk, Michael C.	1185	W22	D19	D17	D12	W11	3½
10 Williams, Daniel W jr	1179	L23	W22	W16	L3	L1	2
11 Horton, Steven L.	1139	W24	L2	D23	W19	L9	2½
12 Fant, James W. jr	1075	W25	L1	W26	D9	W4	3½
13 Cabaniss, Henry H.	1071	W26	L5	W21	W4	L8	3
14 Lemaster Donald	1030	L1	W25	L4	L22	W26	2
15 Cottle, Timothy L.	UNR	L2	W24	L17	L21	W25	2
16 Dean, Daniel C.	UNR	D3	D7	L10	W26	L6	2
17 DeLange, Michael	UNR	W4	D8	D9	W7	L3	3
18 Duhon, Jerry J.	UNR	L5	L26	D24	W20	D22	2
19 Floyd, William B.	UNR	W6	D9	L8	L11	W23	2½
20 Hogan, William C. jr	UNR	D7	L4	L6	L18	L24	½
21 Jenkins, Seymore	UNR	L8	W6	L13	W15	L7	2
22 Latham, Virgil H.	UNR	L9	L10	W25	W14	D18	2½
23 Long, Earnest	UNR	W10	L3	D11	L6	L19	1½
24 McCray, Elton	UNR	L11	L15	D18	L25	W20	1½
25 McDonald, Michael F.	UNR	L12	L14	L22	W24	L15	1
26 Wise, George	UNR	L13	W18	L12	L16	L14	1

C3 Swiss #36

September 23, 78

1 Ira Lee Riddle	1163	W4	W7	L2			2
2 Len Speakman	1096	W5	W3	W1			3
3 Steve Zachwieja	1051	W6	L2	L4			2
4 Ed Ost	973	L1	W8	W3			2
5 Dave Ost	930	L2	W6	W8			2
6 Mike Wade	NEW	L3	L5	W7	W8		2
7 Eric George	NEW	W8	L1	L6	L9		1
8 Mike Cohen	NEW	L7	L4	L5	L6		0
9 Mitch Grobman	NEW	-	-	-	W7		1

SEPTEMBER TORNAO
September 24, 78
Atlanta, Ga.

NAME	Rtng	1	2	3	TOT
1 J.J. Morrison	1669	W2	L3	W4	2
2 Al Hamilton	1762	L1	W3	W4	2
3 Gary King	1530	W1	L2	F	1
4 Nick Cox	1498	L1	L2	WF	1

Section B

1 A. Castro	1181	D2	W3	W4	2½
2 J. Schneider	1452	D1	D3	W4	2
3 Lee Davis	1367	L1	D2	W4	1½
4 Skip Jones	UNR	L1	L2	L3	0

Section C

1 Buddy Wise	UNR	W2	W5	W3	3
2 Art Brandt	UNR	L1	W6	W4	2
3 H. Southern	937	W5	W4	L1	2
4 T. Martinez	1040	L3	L1	W6	1
5 J. Morrison	UNR	L3	L1	W6	1
6 Ted Mazo	UNR	L4	L2	L5	0

SEPTEMBER QUICK SWISS
September 23, 78
Atlanta, Ga.

1 William Bell	1076	Bye	W5	W3	3
2 John Trent	1487	W5	D3	W4	2½
3 A Campfield	1362	W4	D2	L1	1½
4 Ted Mazo	UNR	L3	Bye	L2	1
5 C Sealock	UNR	L2	L1	Bye	1

DECEMBER QUADRANGULAR
Atlanta, Ga.

Section A

1 Doug King	1715	W2	W3	D4	2½
2 R Campbell	1830	L1	D3	W4	1½
3 Al Hamilton	1770	L1	D2	D4	1
4 Stan Vaughan	2021	D1	L2	D3	1

Section B

1 Bob Bissett	1435	W8	W3	W2	3
2 David Mosley	UNR	W4	W8	L1	2
3 Paul Ramey	1670	W6	L1	D4	1½
4 A Campfield	1362	L2	W7	D3	1½
5 Jeff Castro	1383	W7	-	-	1
6 A Castro	1003	L3	Bye	-	1
7 R Redford	UNR	L5	L4	W8	1
8 Sam Clintron	UNR	L1	L2	L7	0

C3 Swiss #32

November 4, 78

Warminster, Pa.

Open Section I

1 Gary Connors	1826	D5	D4	W8	2
2 Mark Fisher	1797	W6	W3	L4	2
3 H Kalodner	1686	W7	L2	W5	2
4 G Kinsler	1680	W8	D1	W2	2½
5 M Sherman	1648	D1	W6	L3	1½
6 S Wenrich	1407	L2	L5	L7	0
7 Bob Sanson	1369	L3	L8	W6	1
8 Kevin Jiles	1350	L4	W7	L1	1

Open Section II

1 Bob Lubanski	1143	L5	W4	W6	2
2 Jim Thompson	1131	W6	W7	L8	2
3 Jeff Moore	1070	L7	L6	L4	0
4 Homer Sharp	1072	L8	L1	W3	1
5 A Carmichael	1066	W1	L8	W2	2
6 Tim Jiles	1016	L2	W3	L1	1
7 Ron Sanders	815	W3	L2	L5	1
8 H Marmorstein	U	W4	W5	W3	3

Open Section III

1 H Daniels	1564	W4	W3	W2	3
-------------	------	----	----	----	---

C3 SWISS #32
Reserve Section

Player	Rtng	1	2	3	4	5	TOT
1 Chris Yauze	1531	L10	W3	-	-	-	1
2 Mike Panzer	1217	L11	L12	-	-	-	0
3 Howard Notgarnie	1163	L12	L1	W16	-	-	1
4 Ira Lee Riddle	1153	W13	L8	W18	W14	-	3
5 Steve Gilson	1125	W14	W10	W8	W6	-	4
6 Len Speakman	1096	W15	W11	W12	L5	-	3
7 Joanne Lubanski	1081	W16	L18	W11	L10	-	2
8 Joe Lickteig	1032	W17	W4	L5	W18	-	3
9 Dave Ost	986	L18	W15	W13	L12	-	2
10 Ed Ost	949	W1	L5	W14	W7	-	3
11 Arnold Klein	892	W2	L6	L7	W17	-	2
12 Ed Gunther	855	W3	W2	L6	W9	-	3
13 Mike Cohen	UNR	L4	W16	L9	-	-	1
14 Mitch Allen	UNR	L5	W17	L10	L4	-	1
15 Robert Brandy	NEW	L6	L9	L17	L16	-	0
16 Gerald Andrews	NEW	L7	L13	L3	W15	-	1
17 Mike Wade	UNR	L8	L14	W15	L11	-	1
18 Bennett Field	UNR	W9	W7	L4	L8	-	2

1 ST ANNUAL REGION IV DOUBLES CHAMPIONSHIPS

1 South American's	2131	W7	W11	D5	W4	W2	4½
1 Ruben Shocron	2262	W13	W21	W9	W7	D3	4½
2 William Ruiz	2000	D14	W22	L10	W8	W4	3½
2 King's Knights	2020	W12	W8	D3	W5	L1	3½
3 Stuart Rundlett	2029	D23	W15	D5	D9	D1	3
4 P.L.N. Murthy	2010	W24	W16	D6	D10	L2	3½
3 Dynamic Duo	1905	W13	W15	D2	D8	D6	3½
5 Jewell Watson	1969	W25	W29	D3	D15	D11	3½
6 Joseph Scott	1841	W26	W30	D4	D16	D12	3½
4 The Rapers	1984	W17	W7	D11	L1	W9	3½
7 Tom Algeo	2058	W33	W13	L21	L1	W17	3
8 Mark Coles	1911	W34	W14	W22	L2	W18	4
5 Orange Crush	1908	W9	W6	D1	L2	W8	3½
9 Tom Heaton	1985	W17	W11	L1	D3	D15	3
10 James Vermilya	1830	W18	W12	W2	L4	W16	4
6 The Kingsmen	1700	W10	L5	W15	W12	D3	3½
11 Ulysses Martin	1767	W19	L9	W29	D23	D5	3
12 Curtis Gillespie	1633	W20	L10	W30	W24	D6	3½
7 The Sting	1667	L1	L4	W16	W14	W10	3
13 Doug King	1718	L1	L7	WF	W27	W19	3
14 Tim Brookshear	1616	D2	L8	W32	D28	W20	3
8 The Boogies	1728	W14	L2	W13	D3	L5	2½
15 Ralph Hawkins	1733	W27	L3	W25	D5	D9	3
16 David Lorrentzon	1724	D28	L4	W26	D6	L10	2
9 The Rondons	1466	L5	D16	W17	W11	L4	2½
17 Don Mullis	1689	L9	L31	W33	W21	L7	2
18 Ronnel Shaw	1243	L10	W32	W34	W22	L8	3
10 Pedagogues	1218	L6	Bye	D12	W13	L7	2½
19 John Roberts	1359	L11	Bye	L23	W25	L13	2
20 William Bell	1076	L12	Bye	W24	W26	L14	3
11 Killer Beas	1768	W16	L1	D4	L9	D12	2
21 Al Hamilton	1770	D31	L1	W7	L17	L23	1½
22 Barry Barrentine	1767	W32	L2	L8	L18	W24	2
12 The Gambits	1583	L2	W17	D10	L6	D11	2
23 Allison Bert	1736	D3	W33	W19	D11	W21	4
24 James Goodwin	1430	L4	W34	L20	L12	L22	1
13 The Champions	1410	L3	W14	L8	L10	W15	2
25 Nicholas Cox	1541	L5	W27	L15	L19	WF	2
26 Dean Zindler	1278	L6	D28	L16	L20	W30	1½
14 Incredible Hulk	1290	L8	L13	Bye	L7	W15	2
27 John White	1325	L15	L25	Bye	L13	WF	2
28 John Berry	1255	D16	D26	Bye	D14	WF	3½
15 Champ "E" ons	1074	Bye	L3	L6	D16	L13	1½
29 Steve Schneider	1218	Bye	L5	L11	LF	LF	1
30 Steve Eddins	1100	Bye	L6	L12	W32	L26	2
16 Jersey Ga Connection	1392	L11	D9	L7	D15	L14	1
Jay Schneider	1394	D21	W17	LF	WF	LF	2½
32 Glen Serra	1389	L22	L18	L14	L30	LF	0
17 The Sack	1550	L4	L12	L9	Bye	-	1
33 Mike Goodman	1665	L7	L23	L17	Bye	-	1
34 Roger Cryslar	1434	L8	L24	L18	Bye	-	1

END OF SUMMER OPEN
September 23-24 1978
Atlanta, Georgia

1 John Nardandrea	2097	W25	D16	W14	W7	D5	4½
2 Randy Kolvick	2038	D15	W24	W16	D4	W9	4
3 Willie Ruiz	2000	L16	W19	W23	W14	W7	4
4 P.L.N. Murthy	1973	D24	W20	W17	D2	D6	3½
5 Greg Small	2194	L10	W18	W13	W11	D1	3½
6 Henry Robinson	2081	L13	W25	W10	W8	D4	3½
7 Fred Allsbrook	2238	W18	W10	W8	L1	L3	3
8 Don Schultz	1930	W19	W13	L7	L6	W11	3
9 Stan Sherman	1887	L23	W22	W21	W15	L2	3
10 Keith Biesada	1801	W5	L7	L6	W23	W18	3
11 Bruce Wright	1855	W21	D17	W15	L5	L8	2½

Player	Rtng	1	2	3	4	5	TOT	SECOND SATURDAY SWISS
12 Roy Farr	1914	D20	L15	W24	W16	WD	2½	December 9, 1978
13 James Vermilya	1771	W6	L8	L5	D22	W19	2½	Columbus, Georgia
14 Jerry Wheeler	1864	W22	W23	L1	L3	WD	2	
15 Mark Solomon	1768	D2	W12	L11	L9	D22	2	
16 Byron Watson	1764	W3	D1	L2	L12	D17	2	
17 Jeffrey Cobb	1363	Bye	D11	L5	L18	D16	2	
18 Robert Campbell	1830	L7	L5	W20	W17	L10	2	
19 Ed Felts	1707	L8	L3	W25	W21	L13	2	
20 Ralph Hawkins	1702	D12	L4	L14	D24	W23	2	
21 John Womack jr.	1427	L11	Bye	L9	L19	W24	2	
22 Don Mullis	1657	L14	L9	Bye	D13	D15	2	
23 James Pressley	1694	W9	L14	L3	L10	L20	1	
24 John Smith jr.	1724	D4	L2	L12	D20	L21	1	
25 Joe Scott	1792	L1	L6	L19	-	-	0	

Player	Rtng	1	2	3	4	5	TOT	RESULTS
1 Johnny Sashir	1527	W17	W19	W3	W6	L2	4	2 Place
2 John Bath	1472	W21	L3	W14	W10	W1	4	1 Steven Ledford 1889 2½
3 William Bell	1076	Bye	W2	L1	W4	W6	4	2-4 Rick Likens 1734 2
4 Robert Bassett	1435	W14	D10	W5	L3	W11	3½	2-4 John Wilke 1540 2
5 Curtis Gillespiel	1566	D11	W12	L4	W9	W7	3½	2-4 Jeffrey Davis UNR 2
6 Roger Pudwill	1440	W8	W13	W7	L1	L3	3	5 Ray Quillian 1651 1½
7 Ronald Allen	UNR	W20	W16	L6	W8	L5	3	6-9 Melvin Cooper UNR 1
8 Paul Ranev	UNR	L6	W20	W13	L7	W14	3	6-9 R. Bechdolt 1
9 Petrone Woodard	UNR	L19	W21	W17	L5	W16	3	6-9 Carl Mackay 1245 1
10 Jeff Burdette	1559	W18	D4	W11	L2	WD	2½	6-9 Richard Rogers 1058 1
11 John Marlin	1249	D5	W15	L10	W12	L4	2½	10 Radford Barnes UNR 0
12 John Roberts	1358	D16	L5	W15	L11	W17	2½	
13 Brian McCarthy	1568	W15	L6	L8	W18	WD	2	
14 Buddy Wise	UNR	L4	W18	L2	WF	L8	2	
15 Dean Zindler	1278	L13	L11	L12	Bye	W21	2	
16 William Crowell	1599	D12	L7	D20	D17	L9	1½	
17 Ronald Kirk	1198	L1	Bye	L9	D16	L12	1½	
18 John Gillooly	1236	L10	L14	W21	L13	D20	1½	
19 James Mingle	1396	W9	L1	F	LF	WD	1	
20 David Collins	1502	L7	L8	D16	L21	D18	1	
21 Joseph Haraka	UNR	L2	L9	L18	W20	L15	1	

PENN STATE FALL OPEN
October 28-29 1978

1 Kauppinen, M.	UNR	W20	W35	W32	D2	W12	4½	USCF DELEGATES
2 Naugle, Ken A.	1799	W42	W6	W8	D1	D7	4	Pennsylvania
3 Jones, Craig W.	1789	W22	W14	D10	D9	W13	4	Ira Lee Riddle
4 Vasiliu, Adrian	1730	W28	W16	D7	D5	W9	4	Dave Jaeger
5 Schneider, Craig	1822	W27	W40	D9	D4	W11	4	38 Saddle Drive
6 Kasmala, Gerald	1566	W48	L2	W28	W26	W24	4	Furlong, Pa. 18925
7 Snaveley, Kurt	1982	W29	W13	D4	D11	D2	3½	Robert Batoff
8 Devereaux, John	1651	W37	W12	L2	D14	W23	3½	9712 Portis Road
9 Kinsler, George	1680	W36	W18	D5	D3	L4	3	Philadelphla, Pa. 19115
10 Johnson, Keith L	UNR	W25	W26	D3	L12	D17	3	Joseph Ohler (address above)
11 Freeman, Scott E	1691	W47	D33	W24	D7	L5	3	Gary Connors
12 Clark, Matthew	1936	W31	L8	W21	W10	L1	3	ALTERNATES
13 Sukienik, Leo	1699	W44	L7	W38	W19	L3	3	Richard I Baldock
14 Soveroski, R.J.	1459	W43	L3	W18	D8	D15	3	4406 McKenzie Dr.
15 Greiner, T.J.	1777	D39	W38	D33	D17	D14	3	Monroeville, Pa. 15146
16 Weed, Robert	UNR	W30	L4	D25	D20	W38	3	John Murphy
17 Schutte, T.J.	1589	L23	W34	W42	D15	D10	3	1003 Hulton Rd.
18 Goodman, Jess C	1988	W21	L9	L14	W42	W29	3	Verona, Pa. 15147
19 Provins, James	1476	L33	W47	W43	L13	W28	3	Michael Sherman
20 Daniels, Howard	1564	L1	W41	D23	D16	W27	3	5939 N. Hutchinson St.
21 Everett, Willard	1454	L18	W36	L12	W41	W26	3	Philadelphia, Pa. 19141
22 Beck, Joseph J.	1330	L3	L43	W36	W40	W30	3	Ross Nickel
23 McLaughlin, W.R.	UNR	W17	L32	D20	W25	L8	2½	721 Marchman Rd.
24 Wike, Steven	1828	D38	W39	L11	W27	L6	2½	Philadelphla, Pa. 19115
25 Servinsky, Mark	1505	L10	W45	D16	L23	W39	2½	Roy Kress
26 Mitchell, Rickey	1750	W34	L10	W31	L6	L21	2	Rd #2, Box 124
27 Fritz, James J.	1370	L5	W48	W40	L24	L20	2	McDonald, Pa. 15057
28 Jiles, Kenneth	1081	L4	W30	L6	W31	L19	2	Thomas Magar
29 Ester, Harold P.	1404	L7	W44	L35	W45	L18	2	Boris Baczynsky
30 Hathaway, John	1503	L16	L28	W39	W34	L22	2	1447 W. Cayuga St.
31 Altenhof, Jeff	1400	L12	W37	L26	L28	W45	2	Philadelphia, Pa. 19140
32 Culver, William	1740	W45	W23	L1	-	-	2	Richard Costigan
33 LaRocca, Mark	2019	W19	D11	D15	-	-	2	9755 Veree Rd.
34 Turenchalk, Joyce	1326	L26	L17	W44	L30	W46	2	Philadelphla, Pa. 19115
35 LaRocca, Eric	1749	W41	L1	W29	-	-	2	Richard Chromik
36 Podol, Peter	925	L9	L21	L22	W48	W41	2	1124 E. Arlington Rd.
37 Rudnick, Davis	UNR	L8	L31	L41	W44	W47	2	Erie, Pa. 16504
38 Green, Ben	1375	D24	L15	L13	W46	L16	1½	Barbara Taylor
39 Morgan, James S.	1327	D15	L24	L30	W47	L25	1½	128 N. 13th St.
40 Murphy, Glen	1610	W46	L5	L27	L22	-	1	Easton, Pa. 18042
41 Heberly, Kevin	1276	L35	L20	W37	L21	L36	1	Christopher Yauze
42 Simon, Joseph	1333	L2	W46	L17	L18	-	1	750 Meadow Dr.
43 Sheriff, Gary	2016	L14	W22	L19	-	-	1	Warminster, Pa. 18974
44 Podol, Michael	538	L13	L29	L34	L37	W48	1	ALTERNATE VOTING MEMBERS
45 Best, Dennis L	1150	L32	L25	W48	L29	L31	1	Homer Sharp
46 Etzel, Steven	UNR	L40	L42	W47	L38	L34	1	3366 Morning Glory Rd.
47 McGuire, Michael	1073	L11	L19	L46	L39	L37	0	Philadelphla, Pa. 19154
48 Foster, Charles	UNR	L6	L27	L45	L36	L44	0	Three more to be appointed

NOTE: Other address on page 2

NOTICE (SC) - VOTE!

