

The Chessman

PRICE 75¢

MAR-APR 1979

VOLUME 2 NUMBER 4



ARNOLD DENKER



LEE HYDER

FLORIDA CHESS ASSOCIATION**President**

Gilbert Cantrell
4040 67th Ave. N.
Pinellas Park, Fl. 33565
Phone: (813) 527-6010

Vice President

Larry Storch
1622 E. Harding Ave.
Orlando, Fl. 32806
Phone: (305) 896-3848

Sec-Treas.

Flora Cantrell
(Same as President)

Directors:

Arnold Denker
2701 N. Ocean Blvd. 8E
Ft. Lauderdale, Fl. 33308
Phone: (305) 564-6126

Charles Turk
12802 SW 12th Terr.
Miami, Fl. 33184
Phone: (305) 226-8235

Garry Sanders
421 Pinellas Way S.
St. Pete, Fl. 32903

Egon Teodorson
775 Malibu Lane
Indiatlantic, Fl. 32903
Phone: (305) 773-3215

Mark Solomon
6 Bayberry Branch
Casselberry, Fl. 32707
Phone: (305) 831-0176

Douglas Carpenter
2853 Post St. Apt. 3
Jacksonville, Fl. 32205
Phone: (904) 389-7989

GEORGIA CHESS ASSOCIATION**President**

Steve Schneider
1331 North Decatur Rd.
Atlanta, Ga. 30306
Phone (404) 378-5977

Vice President

L. Thad Rogers
3055 General Lee Rd.
Macon, Ga. 31204
Phone (912) 742-5607

Vice President

Chess Clubs
Lew Martin
P.O. Box 10354
Atlanta, Ga. 30318

Secretary

Jared Radin
1458 Sheffield Dr.
Atlanta, Ga. 30329
Phone: (404) 634-6598

Treasurer

Steve Hunt
4153 Wesley Club Dr.
Decatur, Ga. 30034
Phone (404) 284-6528

Editor (Acting)

Mike Decker
1604-4 Briarcliff Rd.
Atlanta, Ga. 30306
Phone: (404) 874-6909

Tournament Organizer

Gregg Maness
710 Heard Street
Elberton, Ga. 30635
Phone: (404) 283-3968

Publicity Director

Vacant

Junior Officer

Tom Morris
Room 228 Dobbs Hall
Emory University
Phone: (404) 633-8933

Membership Director

Bill Noyes
777 Briarcliff Rd.
Atlanta, Ga. 30306

**NORTH CAROLINA
CHESS ASSOCIATION****President**

Bill Wall
Box 167
Stony Point, NC 28678

Vice President

Alan Lipkin
2635 Glenhaven Lane
Winston-Salem, NC 27103

Sec-Treas.

Tom Galloway
411 Morrison
Chapel Hill, NC 27514

Editor

Sean T. O'Brien
537 Hinton James
Chapel Hill, NC 27514

**PENNSYLVANIA STATE
CHESS FEDERATION****President**

Ira Lee Riddle
Fox Run Apts. F24
365 Newtown Rd.
Warminster, Pa. 18974
Phone: (215) 674-9049

Vice President

Tom Magar
1120 Jacks Run Rd.
N. Versailles, Pa. 15137

Secretary

Bob Dudley
107 Crosstree Rd.
Coraopolis, Pa. 15108

Treasurer

Gary Connors
93 Serene Dr.
Holland, Pa. 18966
Phone: (215) 355-0878

**SOUTH CAROLINA
CHESS ASSOCIATION****President**

William Dodgen
2008 Robin Road
N. Augusta, SC 29841
Phone: (803) 279-6881

Vice President

Marion Mahaffey
1207 Memorial Park Rd.
Lancaster, SC 29720
Phone: (803) 282-2312

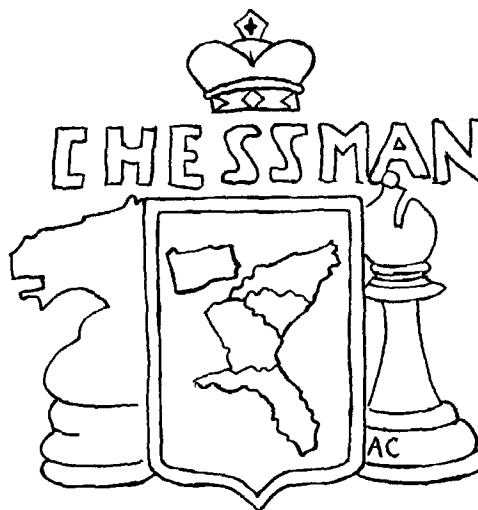
Secretary

Charles Braun
7 Winthrop Dr.
Aiken, SC 29801
Phone (803) 648-5446

Treasurer

Harold Kelly
811 Rhododendron Pl. SE
Aiken, SC 29801

Editor- M. Lee Hyder
33 Longwood Dr.
Aiken, SC 29801

**EDITOR-IN-CHIEF**

Earle Morrison

ASSOCIATE EDITORS

Arnold Denker Mike Decker Sean O'Brien Ira Lee Riddle Lee Hyder

GAMES

Rambling Along	3	Arnold Denker
Pan American	3	Harold Winston
S.C. Championship	4	David Hutchins & C.E. Braun
Florida State Championship	6	Larry Storch
King's Indian Defense	6	Joel Benjamin
Wing Gambit	6	John Morash
End-of-Year Open	6	David Hutchins
Majdorf Variation	6	Mike Decker
Five Minute Chess	7	Robert M. Snyder
Back to Basics	7	Jay Schneider
Miniature Madness	8	Bill Wall
Atlanta Kings	8	Mike Decker
"The Shark"	9	Stan Vaughan

CLUB NEWS & OFFICERS REPORTS

Club News	9	Bill Wall
Officers Reports	9	S.Hunt & Tom Galloway
Notes	10	Jared Radin
Letters To The Editor	10	Lee Hyder
Clearinghouse Report	11	

WHERE TO PLAY CHESS

Chess Clubs	12
Tournaments	12

ARTICLES

The Press	14	Earle Morrison
USCF Rating System	14	Mike Decker
Continued	15	

TOURNAMENT RESULTS

Pennsylvania Crosstables	15	
Chess in Pennsylvania	15	Ira Lee Riddle
Region IV Crosstables	16	
Charleston Simo	16	Ralph Carter
The South and the Pan Am	17	Harold Winston
RAM I	17	
The Charleston Report	17	Pat Hart
Expand Your Horizons	17	Mark Solomon

Quickies	18
----------	----

RAMBLING ALONG

BY ARNOLD DENKER

In my opening column some months back, I asked for peace and co-operation by the members of the USCF towards our newly elected officers. Since that time I have heard a good deal of flack. I do not think we should declare a moratorium on criticism, but I do feel that it is far too soon to judge the situation fairly and responsibly. After all they did come into a very sticky situation, and deserve a reasonable time to work their way out. Perhaps the annual meeting might be a better time and place to assess their performance.

Have been working to get industry behind the U.S. Open of 1980 so far no luck, but still have some meetings coming up that might prove fruitful. What constantly amazes me is how shortsighted big industry is. For a mere few thousand dollars they can get publicity that is worth so much more, yet you have to practically batter down the door to talk to them. More and more I feel that we have to hire professional P.R. men to get the job done. It's just not good enough to have a sound case, you also need a good lawyer.

Going over some old games of mine the other day, I came across a game played against Arthur Dake. It reminded me of the following true story. In 1932 at the bottom of the great depression some members of the Prof. Isaac L. Rice Progressive Chess Club of N.Y. decided to hold a tournament for the benefit of the starving young chess masters. The best young players of the day were invited (Dake, Fine, Reinfeld, Horowitz, Kevitz, Pollard, Denker etc.) and the first prize was to be \$200. Money was collected and one wag who was in the fish business contributed a small keg of schmaltz herring. It was agreed that this handsome prize would also go to the winner. Since that time this tournament has been known as "The Schmaltz Herring Tournament". Dake beat me out for the first prize so it is with particular pride that I give you the following game, which was typical of my wild attacking style at that early stage of my development.

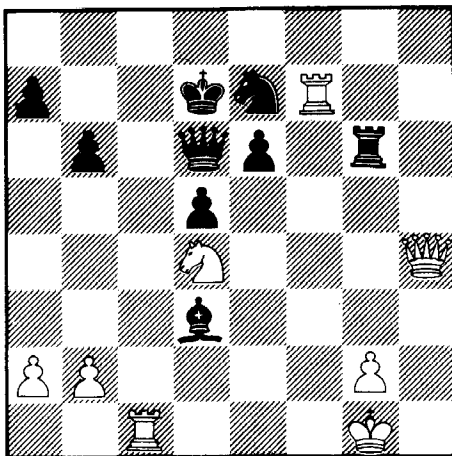
The Schmaltz Herring Tournament 1932

STAUNTON GAMBIT

White Arnold Denker

Black Arthur Dake

1 P-Q4 P-KB4, 2 P-K4 (The move that gives the game its name) PxP, 3 P-KB3 P-K3, 4 N-Q2 PxP, 5 KNxP N-KB3, 6 B-Q3 P-B4, 7 O-O PxP, 8 N-N5 (Attack at all cost, this is no time to count pawns) P-Q4, 9 NxRP B-Q3, 10 N-N3 Q-B2, 11 P-KR3 N-B3, 12 B-KN5 B-K2, 13 NxNch PxN, 14 BxP RxP, 15 Q-N4 (If 15 PxR Q-N6ch and Black has perpetual check.) Q-R7ch, 16 K-B2 RxB, 17 Q-N6ch K-Q2, 18 PxR P-N3, 19 QR-K Q-Q3, 20 K-N1 B-R3, 21 BxB NxB, 22 Q-R7 R-KN1, 23 R-B7 R-N6, 24 NxP BxP, 25 Q-R4 R-N3, 26 R-QB1 (Threatening 27 RxNch followed by R-B7ch Winning.)



K-K1, 27 RxNch QxR, 28 Q-R8ch K-B2, 29 N-B3 (Threatening 30 N-K5 mate. Now there is no defense.) Q-Q3, 30 N-K5ch K-K2, 31 R-B8 1-0.

Here are two games from the latest Russian Championship that I think you will enjoy playing over.

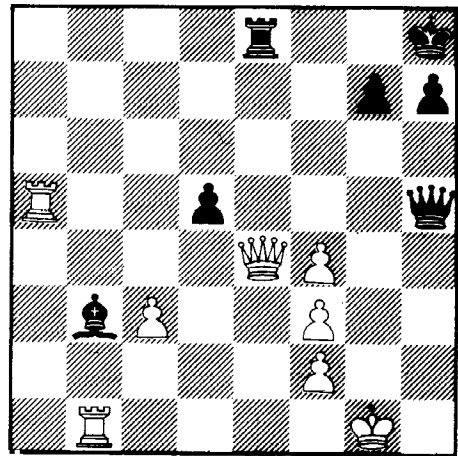
SICILIAN DEFENSE PELIKAN'S VARIATION

White Geller

Black Sveshnikov

1 P-K4 P-QB4, 2 N-KB3 N-QB3, 3 P-Q4 PxP, 4 NxP P-K4, 5 N-N5 N-B3, 6 QN-B3 P-Q3, 7 B-N5 P-QR3, 8 N-R3 P-N4, 9 N-Q5 B-K2, 10 BxN BxB, 11 P-QB3 O-O, 12 N-B2 B-N4, 13 P-QR4 PxP, 14 RxP P-QR4, 15 B-B4 R-N1, 16 P-QN3 K-R1, 17 O-O P-B4, 18 PxP BxP, 19 Q-K2 Q-Q2, 20 N(2)-K3 B-K3, 21 R-Q1 B-Q1, 22 R-R2 Q-KB2, 23 Q-Q3 Q-R4, 24 N-B1 P-K5,

25 Q-B2 B-R5, 26 N-N3 KBxN, 27 RPxB N-K4, 28 N-B4 RxN, 29 PxR N-B6 ch, 30 PxN BxB, 31 QxP BxP, 32 R-N1 R-K1, 33 RxP P-Q4,



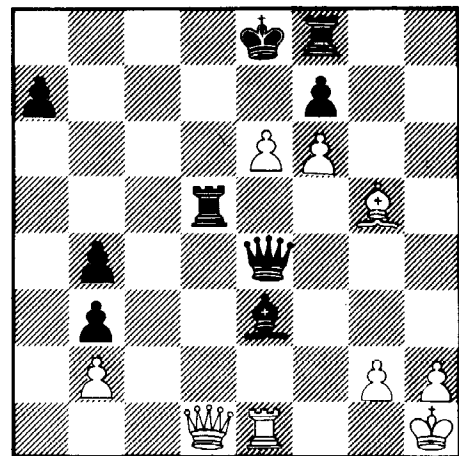
Black would have perpetual check after 34 RxB RxQ, 35 PxR Q-Q8ch, 36 K-R2 Q-R4ch, 37 K-N3 Q-N3ch, 38 K-B3 QxPch, in this variation Black could not play 36 ... QxR, then 37 R-R8ch wins for White. White can maintain his advantage with 34 QxRch QxQ, 35 RxB but not (JEM) 34 R-K1?? Q-N3ch and White resigned.

QUEEN'S GAMBIT

White Tal

Black Michalchishin

1 N-KB3 P-Q4, 2 P-B4 P-K3, 3 P-Q4 N-KB3, 4 N-B3 P-B3, 5 B-N5 PxP, 6 P-K4 P-N4, 7 P-QR4 B-N5, 8 PxP PxP, 9 P-K5 P-KR3, 10 B-R4 P-N4, 11 KNxP PxN, 12 BxNP QN-Q2, 13 Q-B3 R-QN1, 14 PxN B-N2, 15 Q-N3 R-N1, 16 B-K2 Q-N3, 17 O-O B-Q3, 18 Q-R4 P-N5, 19 N-Q1 Q-N4, 20 P-B4 Q-Q4, 21 B-B3 QxPch, 22 K-R1 N-B4, 23 Q-R7 R-KB1, 24 P-B5 BxB, 25 RxB N-N6, 26 RxN PxR, 27 N-K3 Q-K5, 28 Q-R5 B-B4, 29 PxP BxN, 30 R-K1 R-N4, 31 Q-Q1 R-Q4,



32 Q-R1! RxB??, 33 Q-R4ch K-Q1, 34 Q-Q7 checkmate.

PAN-AMERICAN GAMES

BY HAROLD WINSTON

SICILIAN DEFENSE

White Richard Costigan
University of Pennsylvania

Black Michael Rohde
Yale University

1 P-K4 P-QB4, 2 N-KB3 P-K3, 3 P-QN3 B-K2, 4 B-N2 N-KB3, 5 P-K5 N-Q4, 6 P-B4 N-B5, 7 P-KR4 P-Q3, 8 P-N3 N-N3, 9 PxP B-B3, 10 N-B3 N-B3, 11 N-KN5 B-Q5, 12 Q-R5 QxP, 13 B-N2 Q-K4ch, 14 K-B1 P-KR3, 15 BxNch PxP, 16 Q-B3 O-O, 17 R-K1 Q-B2, 18 N-R3 P-K4, 19 P-KN4 P-K5, 20 QxP P-B4, 21 Q-B2 PxP, 22 QxN PxN, 23 N-Q1 B-B4, 24 Q-R5 B-Q6ch, 25 K-N Q-N6 checkmate.

CHANGING ADDRESSES ? Please notify us of any change without delay.

S.C. CHAMPIONSHIP

Pan-Am.
Chicago, Ill.
December 1978
SICILIAN DEFENSE
(W) Matthew Gold Yale
(B) Mike Dale Jonns Hopkins

1 P-K4 P-QB4
2 N-KB3 P-Q3
3 P-Q4 PXP
4 NXP N-KB3
5 N-QB3 P-QR3
6 B-QB4 P-K3
7 B-N3 P-QN4
8 O-O B-K2
9 Q-B3 B-N2
10 BXP PxB
11 NXP Q-Q2
12 N-Q5 BxN
13 PxB R-N1
14 R-K1 Q-B1
15 B-B4 QN-Q2
16 R-K3 R-R2
17 QR-K1 N-K4
18 BxN PxB
19 RXP K-B2
20 N-N5ch K-B1
21 NXPch K-B2
22 N-N5ch K-B1
23 N-K6ch K-B2
24 Q-B5 Q-Q2
25 N-N5ch K-B1
26 Q-N6 Resigns

9 BxPch
10 O-O
11 Q-K2
12 P-K4
13 B-N5
14 P-QR4
15 N-Q2
16 PxB
17 N-B4
18 RxB
19 R-R1
20 N-R5
21 Q-Q1
22 Q-R4
23 N-B6
24 QPx
25 PxB
26 P-B7
27 Q-R8
28 N-Q1
29 P-R3
30 RxB
QN-Q2
O-O
Q-N3
N-K1
N-B2
R-K1
NxB
B-N2
Q-B2
BxB
Q-N2
Q-R2
Q-N3
N-K4
BxN
NxF
QxNP
R-QB1
B-B1
Q-N5
RxB
1-O

Pan-Am.
Chicago, Ill.
December 1978
SICILIAN DEFENSE
ROSSOLIMO VARIATION
Contributed by
Stan Vaughan
(W) Costigan (2330)
Univ. of Pa.
(B) Hudson (2040)
Clemson

1 P-K4 P-QB4
2 N-KB3 P-Q3
3 B-N5ch B-Q2
4 BxBch NxB
5 O-O KN-B3
6 R-K1 P-KN3
7 P-B3 P-B5
8 Q-R4 Q-B2
9 N-R3 R-B1
10 P-K5 PXP
11 NXP P-QR3
12 P-Q4 PXP
13 B-N5 B-N2
14 NxB QxN
15 QxQch KxQ
16 QR-Q1 KR-Q1
17 RxBch K-K1
18 R(3)-K3 R-Q2
19 N-B2 P-R3
20 B-R4 P-KN4
21 B-N3 N-R4
22 K-B P-K3
23 B-K5 BxB
24 RxB N-B5
25 R-N R-Q2
26 N-Q4 RxBch!!
27 KxR N-Q6ch
28 K-N3 NxB
29 R-K N-Q6
30 R-K2 K-B
31 K-N4 P-K4
32 N-B3 R-B4ch
33 K-N3 P-KR4?
34 NXP P-R5ch
35 K-R3 N-B5ch
36 K-N4 RXP
37 N-Q7ch K-N2
38 R-K5 R-B5
39 RxBch K-R3
40 N-K5 N-K3ch
41 NxB NxB
42 KxP K-N3
43 K-N4 N-K3
44 N-Q6 P-N4
45 K-B3 P-B4
46 P-KN4 PxBch
47 KxP K-B3
48 N-K4ch K-K4
49 N-N5 N-N2
50 N-B3ch K-K5
51 P-KR4 K-Q6
52 P-R5 NXP??

Knight to K3 & B1 slows
White down.

53 KxN
54 P-N4
55 P-R3
56 N-Q4
57 N-B6
58 K-N6
59 K-B7
60 N-R5
61 K-K8
62 K-K7
63 K-Q7
64 K-B8
65 K-B7
66 K-N6
67 KxP and White won

Pennsylvania
BENKO GAMBIT
(W) Mark Gregory (1355)
(B) Carl Gooding (1524)

1 P-Q4 N-KB3
2 P-QB4 P-B4
3 P-Q5 P-N4
4 PXP P-QR3
5 PXP BxB
6 N-QB3 P-Q3
7 B-N5 P-N3
8 Q-Q2 B-N2
9 O-O-0??

Castling right into it.

9 ... Q-R4
10 K-N QN-Q2
11 N-B3 O-O
12 P-K4 NxB!!
13 NxB QxRPch
14 KxQ B-Q6ch
15 K-N3 P-B5ch
16 K-N4 KR-N mate

Pennsylvania
SICILIAN DEFENSE
Feb. 3, 79
(W) K. Jiles
(B) Sardinas

1 P-K4 P-QB4
2 N-KB3 P-Q3
3 P-Q4 PXP
4 NXP N-KB3
5 N-QB3 P-QR3
6 P-QR4 N-B3
7 B-K3 P-K3
8 B-QB4 B-K2
9 O-O O-O
10 R-K Q-B2
11 Q-K2 NxB
12 BxB P-K4
13 B-K3 B-N5
14 P-B3 B-R4
15 N-Q5 NxB
16 BxB B-N3
17 Q-Q3 K-R
18 Q-N3 P-B4
19 PXP BxB
20 QXP QxQ
21 BxQ QR-N
22 BXP BxB
23 B-QN5 P-Q4
24 K-R? P-Q5
25 BXP BxB
26 RxB P-Q6
27 R-Q7 QR-Q
28 RxB RxB
29 P-R5 P-Q7
30 B-K2 R-K
31 K-N

As good as any. -Ed.

31 ... RxB
32 P-R6 R-K8ch
33 RxB PxR(Q)
Mate

Pan-Am.
Chicago, Ill.
December, 1978
PIRC DEFENSE
(W) Michael Rohde Yale
(B) Peter Thompson Minn.

1 P-K4 P-Q3
2 P-Q4 N-KB3
3 N-QB3 P-KN3
4 B-KN5 QN-Q2
5 P-B4 P-KR3
6 B-R4 N-R4
7 N-R3 QN-B3
8 P-K5 PXP
9 BXP N-Q4
10 Q-B3 BxN
11 PxB N(R)-B5
12 B-B4 N-K6
13 B-N5ch P-B3
14 BxBch PxB
15 QxBch Q-Q2
16 QxBch Q-Q1
17 QxQch KxQ
18 B-N3 N-K3
19 P-Q5 N-N4
20 P-KR4 N-R6
21 K-Q2 N-B4
22 KR-KB1 P-KR4
23 QR-K1 B-R3ch
24 K-Q3 P-K3
25 P-Q6 P-N4
26 PXP BxB
27 N-K4 B-R3
28 R-B3 K-Q2
29 R(1)-KB1 N-N4
30 NxB BxB
31 RxB PxR
32 RxB Resigns

Pan-Am.
Chicago, Ill.
December, 1978
BENKO GAMBIT
(W) Michael Rohde Yale
(B) Alan Federl
Case Western Reserve

1 P-Q N-KB3
2 P-QR4 P-B4
3 P-Q P-QN4
4 PXP P-QR3
5 P-K3 P-Q3
6 N-QB3 P-KN3
7 N-B3 B-N2
8 B-Q2 PXP

SICILIAN DEFENSE
CLOSED VARIATION
White David Hutchins (1780) Notes by the
Black Richard Spitzer(1975) Winner

1 P-K4 P-QB4 4 B-N2 B-N2
2 N-QB3 N-QB3 5 P-Q3 P-Q3
3 P-KN3 P-KN3 6 B-K3 N-B3?!

Playable, though 6 ... P-K4, or P-K3 with 7 ... KN-K2
are superior.

7 P-KR3 R-QN1 8 Q-Q2 P-KR3?!

Better is 8 ... P-QN4, 9 B-R6 O-O, 10 BxB. White is
slightly better (Augustsson - Barcza, 1954). The text
weakens Black's KN3 square and makes castling hazardous

9 P-B4 N-Q5

Not 9 ... O-O, 10 P-B5 K-R2, 11 P-KN4 d White has the
upper hand, but 9 ... P-K4 contesting the center is
best.

10 N-B3

Good, but 10 BxN is riveting.

10 ... NxBch

A strategic defeat, but 10 ... N-Q2, 11 BxN!

11 BxN P-QN4 12 N-K2

More timely is 12 P-KN4, and if 12 ... P-KR4, 13 P-K5!
Now, Black should continue, 12 ... P-KR4, 13 P-Q4 B-N2,
14 P-Q5 N-Q2.

12 ... B-N2 16 P-B3 B-R1
13 P-KN4 P-KR4 17 O-O Q-B1
14 P-N5 N-Q2 18 P-B5 O-O
15 P-Q4 P-R3 19 N-B4?!

Better is 19 K-R2! and White has the upper hand, and if
19 ... N-N3, 20 P-N3.

19 ... N-N3 20 Q-N2

Best. White loses his advantage with P-N3 PxBP, 21 Q-N2
(21 KPxP QxP, 22 Q-N2 PXP, 23 PXP P-R5, 24 BxB RxB and
Black has the edge) PxBP, 22 BxKP BxB, 23 QxB Q-N2,
(23 ... P-R5, 24 P-N6!) 24 QxQ RxB, 25 NxB PXP, 26 PXP
N-Q4, 27 K-B2 equal, or 20 PxBP N-B5, 21 Q-K2 (21 PxBP
RxB, 22 Q-K2 NxB, 23 QxN PXP, 24 PXP BxB! and Black is
better.) NxB, 22 QxN PxBP, 23 PXP PXP, 24 QR-B Q-Q2,
25 K-R2 (25 NxBP QxP draws) K-R2 is unclear.

20 ... N-B5 21 B-B2

Better is 21 B-B1! PxBP, 22 PxBP PxBP, 23 PXP BxB, 24
R-N B-Q5ch, 25 K-R N-K6, 26 BxB BxB, 27 PxBch RxB, 28
NxB and White is slightly better.

21 ... N-Q7 22 P-B6?

22 KR-Q NxBch, 23 QxN PxBP, (23 ... PxBP, 24 BXP Q-N2,
(24 ... BxB, 25 PxB K-R2, 26 NxBP! PXP (26 ... PxB? 27
QxPch K-N, 28 P-B6 with a won game) 27 N-B4 R-R1 28
P-Q5 White has the upper hand) 25 BxB KxB, 26 P-B6ch
K-N, 27 N-Q5 White has the upper hand) 24 QxP PxBP,
(24...PxBP, 25 P-N6 PxBP, 26 NxBP R-B2, 27 QxP leaves
White better or 24...BxBP, 25 P-N6 PxBP, 26 NxBP R-B2,
27 QxP QxP, 28 B-R4 R-N2, 29 R-Q2 R-Q2, 30 R(1)-Q
RxB, 31 RxB Q-B2, 32 Q-N5 and White is better) 25 BxB

22 ... NxBch

Stronger is KPxP, 23 NxBP BxBP, 24 KR-Q (All sacs fail)
NxBch, 25 QxN B-KN2

23 QxN KPxP 25 NxBP PxB
24 NxBP BxBP

25 ... B-R, 26 K-R2 Q-K3, 27 N-B4 QxKP, 28 QxQ BxB, 29
QR-K QR-K, 30 PXP equal.

26 QxB ...

Best. If 26 K-R BxKP, 27 QxQB QxPch, 28 K-N K-R, 29 B-K3 R-Nch, 30 K-B2 QR-K, 32 R-R (32 Q-B3 R-N6 advantage to Black) RxQ, 33 RxQ PxP, 34 PxP R-N6 with advantage to Black

26 ... QxP 27 B-R4

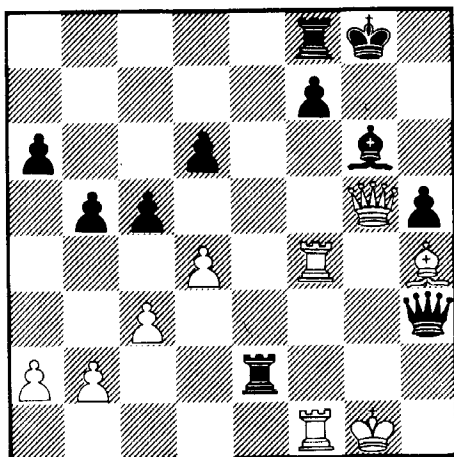
If 27 QR-K1 K-R2 gives Black the advantage

27 ... BxP

Black had only 9 minutes to complete 45 moves, and during the game I thought this to be a blunder, but it's not, though preferable is 27 ... Q-K6ch, 28 R-B2 QxKP, 29 Q-N5ch Q-N3, 30 R-B6! QxQ, 31 BxQ R-N3, (31 ... K-N2, 32 RxP equal) 32 R-R6 and Black is slightly better.

28 Q-N5ch B-N3 30 QR-KB1 R-K7??
29 R-B4 QR-K

Losing, though it looks good. But, 30 ... K-N2, 31 R(1)-B3 Q-K3, 32 PxP PxP, 33 B-B2 P-B3, 34 QxBP when White has an attack for a pawn, e.g. 34 ... R-B1, 35 R-K3 with approximate equality. Black had less than 2 minutes left, and overlooked--



31 QxBch! PxQ 33 R(1)-B7ch 1-0
32 RxRch K-N2

After King to Rook three 34 R-R8 checkmate

ALEKHINE DEFENSE FOUR PAWNS ATTACK

White Charles Sumner (2018)
Black David Hutchins (1780)

1 P-K4 N-KB3 5 P-B4 PxP
2 P-K5 N-Q4 6 PxP B-B4
3 P-Q4 P-Q3 7 B-Q3??
4 P-QB4 N-N3

A book trap, but Mr. Sumner knows few book lines.

7 ... QxP 17 N-K4 P-K4!
8 BxB QxPch 18 QR-K1 P-B3
9 Q-K2 QxB 19 N(3)-N5 Q-B1
10 N-KB3 P-K3 20 N-B3 N-Q5
11 P-QR3 P-QR4 21 NxB RxN
12 B-K3 B-B4 22 N-N3 P-R5
13 N-B3 BxB 23 N-B5 R-Q2
14 QxB O-O 24 Q-B5 KR-B2
15 O-O N-B3 25 R-K3 Q-B1
16 P-QN3 QR-Q1 26 Q-N5 QxP??

Better is 26...PxP.

27 P-QN4 Q-R7 28 R-Q3??

Desperation.

28 ... QxP 30 R-Q8ch R-B1
29 RxR QxQ 31 N-K7ch K-B2
White resigned.

SICILIAN DEFENSE O'KELLY VARIATION

White Lee Purvis (1848) Notes by SC Games
Black Lee Hyder (1983) Editor - C.E.Braun

This is one of Lee Hyder's wins, against the well known Columbia area player Lee Purvis.

1 P-K4 P-QB4 4 N-B3 N-QB3
2 N-KB3 P-QR3 5 B-K2? N-QB3
3 P-B4 P-K3

Much better is 5 P-Q4 PxP, 6 NxP (Watch the effect of Black's control of White's Queen four square!).

5 ... N-Q5 9 N-K4 O-O!
6 O-O N-K2 10 NxP N(2)-B3
7 R-K1 P-KN3 11 NxB NxB
8 P-K5 B-N2 12 N-N3

White could take a shot at keeping the pawn with 12 N-Q3 Q-B2, 13 B-B1 and if QxBP, 14 R-K4. (But after 14...Q-Q4 I like Black's game - Ed)

12 ... BxP 16 R-N1 Q-B3
13 B-B1 P-Q3 17 Q-K2 QR-B1
14 P-Q3 B-Q2 18 B-K3 B-B3
15 NxB BxB 19 P-KN3

White can't get loose from his bind easily. A better try is 19 BxB QxB, 20 Q-K3.

19 ... P-Q4 22 QR-Q1 R-Q2
20 BxB QxB 23 Q-K3 QxQ
21 P-N3 KR-Q1 24 PxQ PxP!

Keeps up the pressure nicely.

25 QxP R(1)-Q 32 PxP B-K5!
26 B-K2 R-Q7 33 B-Q K-N3
27 K-B R(1)-Q2 34 P-R4 P-R4
28 RxR RxR 35 R-B1 KxP
29 R-R1 R-N7 36 P-B5 P-B4
30 P-KR4 K-N2 37 PxP PxP
31 P-KN4 P-KN4 38 Resigns

Nothing stops the rook pawn.

FRENCH DEFENSE WINAWER VARIATION

David Sumner (2011/5) Notes by SC Games
Milton Marder(1873/8) Editor - C.E.Braun

1 P-K4 P-K3 5 P-QR3 BxNch
2 P-Q4 P-Q4 6 PxP N-K2
3 N-QB3 B-N5 7 Q-N4 O-O
4 P-K5 P-QB4

Normal here is 7 ... Q-B2. After 7 ... O-O, White's best is 8 N-B3 with a small edge.

8 B-KN5 Q-R4! 9 BxB

Better is 9 Q-R3 N-N3 equal.

9 ... QxPch 10 K-K2 QxR??

This loses, but Black gets the edge with 10 ... N-B3 11 BxP (or 11 B-B6 NxPch) QxR.

11 B-B6 P-KN3 14 K-B3 Q-B6ch
12 Q-N5 Q-N7 15 K-N4 QxPch
13 Q-R6 QxPch 16 P-B4 Resigns

FRENCH DEFENSE WINAWER VARIATION

White Jim Williams (1487) Notes by SC Games
Black Milton Marder(1873/8) Editor C.E. Braun

1 P-K4 P-K3 4 P-K5 P-QB4
2 P-Q4 P-Q4 5 N-B3?
3 N-QB3 B-N5

No sign of this move in any book.

5 ... N-QB3 6 B-K3 KN-K2

7 B-K2 N-B4

Enough of this shilly-shallying, let's get this show on the road.

8 O-O PxP 10 NxQN NxP
9 NxP/4 BxB 11 PxN Q-N3??

A more circumspect course of action would be 11 ... PxN, 12 PxP Q-B2. (Q-N4!)

12 N-Q4 QxNP 16 BxB B-B3
13 R-N1 QxRP 17 Q-R5 P-B3
14 B-N5ch K-K2 18 BxB RxB
15 N-B6ch PxN

If 18... BxB, 19 R-N7ch K-Q, 20 R-N8ch K-B2, 21 Q-B7ch KxR, 22 Q-N7 mate.

19 QxP K-B2 22 QxKPch K-Q1
20 RxPch K-K1 23 Q-Q6ch Resigns
21 Q-N8ch K-Q2

SICILIAN DEFENSE

White Taffinder (1685) Notes by SC Games
Black Jim Hill (1706) Editor

1 P-K4 P-QB4 4 NxP B-N2
2 N-KB3 P-QN3 5 N-QB3 P-QR3
3 P-Q4 PxP

P-QR3 is to prevent N(4)-N5, for example, if 5 ... P-K3, 6 N(4)-N5 P-Q3, 7 B-KB4 P-K4, 8 N-Q5! N-QR3, 9 B-K3 B-K2, 10 KB-B4 N-B3, 11 NxBch PxN, 12 Q-R5 O-O, 13 N-B3! N-B4, 14 B-R6 N-K3, 15 O-O-O with advantage.

6 B-QB4

Another good idea is 6 B-Q3.

6 ... P-K3 8 B-Q3?
7 O-O P-QN4

Inconsistent. Better is 8 B-N3 P-N5, 9 N-R4 BxP, 10 R-K1 N-KB3, 11 B-N5 B-B3, 12 Q-K2 Q-R4, 13 BxB PxP, 14 QR-Q1 and White has the upper hand.

8 ... P-Q3 19 R-B7 Q-K1
9 K-R1 N-KB3 20 Q-B3 P-N5
10 B-N5 P-KR3 21 N-K2 B-K2
11 BxB PxP 22 P-B3 P-Q4
12 Q-R5 Q-Q2 23 R-KB1 K-N
13 P-B4 N-B3 24 PxNP BxP
14 N-B3 R-QN1 25 P-QR3 B-Q3
15 P-B5 O-O-O 26 R-B1 R-Q2
16 QR-Q1 N-K4 27 R-KB6 B-B2
17 NxN BxN 28 RxRP R-KB2
18 PxP PxP

Black is now untangled and starts on the offense.

29 Q-K3 B-Q1 31 P-KN3 Q-B2
30 P-KR4 R(2)-B2 32 K-N1?

Better is K-R2.

32 ... RxPch! 35 K-R2 Q-B5
33 RxR B-N3! 36 R-R8ch R-Nich!!
34 QxB RxNch

One last surprise, White resigned.

GUIOCO PIANO

In this game our President shows how he got his share of the victory circle - a surprising win from a dead lost position

White Dodgen (1358) Black Delange (1254)

1 P-K4 P-K4, 2 N-KB3 N-QB3, 3 B-B4 B-B4, 4 P-Q4 BxP, 5 N-N5 N-R3, 6 P-QB3 B-N3, 7 P-QN4 Q-B3, 8 O-O P-Q3, 9 P-QR4 P-QR4, 10 P-N5 N-K2, 11 N-Q2 N-N5, 12 BxPch K-B, 13 QN-B3 P-KR3, 14 N-K6ch BxB, 15 BxB QxB, 16 N-R4 P-KN3, 17 P-KR3 N-KB3, 18 K-R K-N2,

19 P-KB4 NxP, 20 Q-K1 N-KB3, 21 PxP PxP, 22 B-KB4 KR-KB, 23 BxP K-R2, 24 N-KB3 QR-K, 25 N-Q4 BxN, 26 PxP N/2-Q4, 27 R-B1 K-N, 28 QxP Q-N3, 29 Q-Q2 P-N4, 30 P-R4 N-R4, 31 PxP RxP, 32 RxRch KxR, 33 PxR N(Q)-B5, 34 Q-Q8ch K-B2, 35 RxPch Black Resigns.

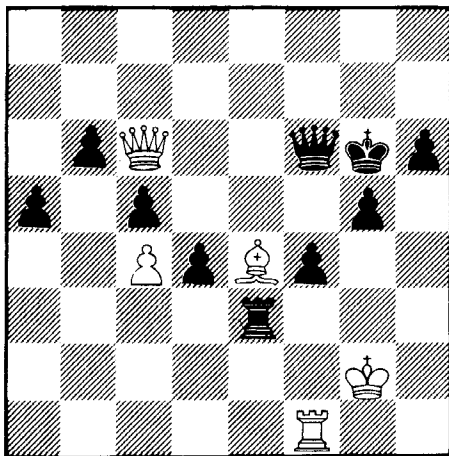
Florida State Championship

Sept. 2, 1978

ENGLISH OPENING

Santiago Chan (1979) Notes by Black
Larry Storch (1852)

1 N-KB3 N-KB3, 2 P-KN3 P-KN3, 3 B-N2 B-N2, 4 P-Q3 O-O, 5 P-B4 P-Q3, 6 N-B3 P-K4, 7 B-N5 P-KR3, 8 B-Q2 N-B3, 9 Q-B K-R2, 10 R-QN P-QR4 11 O-O B-N5, 12 P-KR3 B-K3, 13 P-K4 N-Q2, 14 N-Q5 N-B4, 15 N-K N-Q5, 16 Q-Q P-QB3, 17 N-K3 P-B4, 18 P-B4 KPxP, 19 NPxP Q-R5, 20 B-QB3 R-B2, 21 P-K5? PxP, 22 BxN PxP, 23 N(3)-B2 R-K, 24 Q-Q2 Q-Q, 25 N-B3 R(2)-K2, 26 R-B2 BxP!! (A wonderful solution to the question of what to do with the Queen's Bishop) 27 PxP N-K5, 28 Q-Q3 NxR, 29 KxN P-B4, 30 R-N (White is having trouble finding play) Q-Q3, 31 K-N3 R-K5, 32 Q-Q2 R-K7!, 33 Q-Q3 R(1)-K5, 34 K-R2 QxPch, 35 K-R Q-Q3 (I was about to play 35 ... Q-N6, but suddenly saw 36 N-N5ch! QxN, 37 BxR) 36 N(3)-K B-B3, (On 37 BxR Black has Q-R7mate) 37 N-B3 K-R? (Unaware of the danger) 38 B-B1! R(7)-K6, 39 NxR RxN, 40 Q-Q Q-B5 (With time control reached. I still had the game won, but there were more mistakes on the way) 41 B-N2 B-K4 (41...B-Q is answered by 42 R-K B-B2, 43 RxR) 42 NxB Oxn, 43 R-B P-N3, 44 P-N3 K-N2, 45 R-N R-K7, 46 Q-Q3 RxP?? (Greed and oversight! Black still wins with 46...Q-K6!-LS) (Black has a won endgame, but he must not let White penetrate his position.-Ed) 47 Q-KB3 Q-K2, 48 Q-B6 R-N7, 49 B-Q5 P-KN4, 50 Q-B8 RxP, 51 Q-N8ch K-B3, 52 Q-R8ch Q-N2, 53 Q-Q8ch K-N3, 54 Q-K8ch K-R2, 55 B-K6 R-KB6 56 Q-QB8 K-N3, 57 Q-B6 RxPch. 58 K-N2 R-K6, 59 R-KB P-B5, 60 B-Q5 Q-B3, 61 B-K4ch Draw! The final position is fascinating!



Continental Chess Association KING'S INDIAN DEFENSE

(W) Sulman (2203) Notes by
(B) Joel Benjamin (M) the winner

1 P-QB4 N-KB3 2 N-QB3 P-KN3

This was an appropriate opening for the situation, where I needed a win.

3 P-K4 P-Q3 6 B-K3 P-N3
4 P-Q4 B-N2 7 B-Q3 P-QR3
5 P-B3 O-O

Not 7 ...P-B4, 8 P-K5! and White will get in B-K4 winning.

8 KN-K2 P-B4 10 KPxP BPxP
9 P-K5 N-K1

10 B-K4 R-R2, 11 QPxP NPxP, 12 BxP R-Q2 is unclear (Huebner-Kavalek).

11 PxP QxP 13 B-KB2 P-QN4
12 N-Q5 Q-Q1
Possible is 13 NxQP B-N2, 14 O-O P-QN4 15 Q-N3 (forced) N-Q2, 16 Q-N4 BxN, 17 PxP N(2)-B3, 18 N-B6 NxP, 19 Q-B5 NxB, 20 NxQ RxN is unclear.

14 O-O B-N2 15 P-QN3

White fortifies his QBP so the Knight is supported.

15 ... PxP 16 PxP N-Q2

It is possible to protect the QP by N-QB3, but where does the Knight go from there? I just as soon White take the pawn.

17 BxP BxB 18 NxB N-N3

Comfortably regaining the pawn. If 19 B-K4 NxP.

19 N-K2 NxN 21 Q-N3

20 PxN QxP

White offered a draw. The position is even, but I needed a win.

21 ... Q-B4ch 24 Q-N6 Q-R6
22 K-R N-Q3 25 R-N3 ...
23 QR-N QR-Q

25 Q-N3 would suit Whites purposes better.

25 ... QxP 28 B-Q3 Q-KR5
26 R-Q1 Q-R5 29 R-N4 Q-B3
27 B-B2 Q-QB5

Black's Queen moves are confusing White.

30 BxRP BxB 31 QxB N-K5!

If 32 QxQ RxRmate; if 32 N-N1 N-B7mate

32 RxR N-B7ch

If 32...RxR, 33 Q-R7. Probably 32... QxQ is best.

33 K-N QxQ?

33 N-R6ch shattering Whites King side pawns is far better.

34 RxRch KxR 39 P-B4 Q-B3
35 KxN Q-R2ch 40 R-K4 Q-Q4
36 R-Q4 K-N2 41 P-R3 P-R3
37 K-K3 Q-B5 42 K-B3?? P-B4
38 P-N3 Q-N3 White resigns

Pennsylvania
GUIOCO PIANO
Feb. 3, 1979

(W) D. Lewis (637) Black V. Sereni

1 P-K4 P-K4, 2 N-KB3 N-QB3, 3 B-B4 P-Q3, 4 O-O N-B3, 5 N-B3 B-K2, 6 R-K O-O, 7 P-Q3 B-Q2, 8 B-KN5 B-N5 9 P-KR3 B-R4, 10 BxN BxB, 11 P-R3 N-Q5, 12 B-Q5 P-B3, 13 B-N3 NxN, 14 PxN B-R5, 15 Q-Q2 Q-B3, 16 QR-Q B(4)xP, 17 R-QB Q-N3ch, 18 K-R2 Q-N7 Checkmate.

Chess Day Open
October 8, 1978
SICILIAN DEFENSE
WING GAMBIT

(W) W. Clark (1808) (B) J. Morash (A)

1 P-K4 P-QB4, 2 N-KB3 P-Q3, 3 P-QN4 PxP, 4 P-Q4 B-N5, 5 B-Q3 P-K4, 6 B-N2 N-Q2, 7 O-O KN-B3, 8 QN-Q2 B-K2, 9 P-KR3 B-R4, 10 P-KN4 B-N3, 11 PxP PxP, 12 NxB NxB, 13 BxN P-KR4, 14

B-N5ch K-B, 15 Q-K2 PxP, 16 PxP NxB, 17 QxN QxN, 18 B-KB4 BxKP, 19 B-R2 B-Q3, 20 QxB BxBch 21 K-N2 Q-N4ch, 22 K-B3 R-R6ch, 23 K-K2 QxBch. White Resigned.

End-of-Year Open
December 30, 1978

40/90

(W) D. Holmes (1547) Black D. Hutchins (A)

1 P-Q4 N-KB3, 2 N-KB3 P-B4, 3 P-K3 P-K3, 4 B-Q3 N-B3, 5 P-B3 P-Q4, 6 QN-Q2 Q-B2, 7 O-O B-K2, 8 PxP? BxP, 9 R-K O-O, 10 P-K4 R-Q, 11 PxP?! NxP, 12 N-K4 B-K2, 13 Q-B2 P-B3, 14 B-K3 NxB, 15 RxN P-K4, 16 QR-Q N-R4, 17 N-N3 P-KN3, 18 P-KR3 B-K3, 19 P-N3? (Last chance is 19 R-R) QR-B1, 20 P-B4 P-QN4, 21 N-Q2 PxP, 22 R-QB B-R6, 23 BxBP NxB, 24 NxB BxR, 25 QxB BxN, 26 PxP QxP, 27 QxQ RxQ, 28 R-R3 P-B4, 29 RxP P-B5, 30 N-K2 R-Q7, 31 K-B?? R-Q8Checkmate.

Chessman Corres.
1979

SICILIAN DEFENSE NAJDORF VARIATION

(W) J.E. Morrison

(B) Mike Bacon

1 P-K4 P-QB4 7 P-B4 B-K2
2 N-KB3 P-Q3 8 Q-B3 Q-B2
3 P-Q4 PxP 9 O-O-O QN-Q2
4 NxP N-KB3 10 B-Q3 P-KR3
5 N-QB3 P-QR3 11 Q-R3 R-KN1?
6 B-KN5 P-K3

ECO gives 11...R-KN1!?, but just the ? is sufficient as we will see.

12 P-K5! PxP

There is nothing better on 12...PxP, 13 NxP! PxN, 14 B-N6ch and White has a won game.

13 PxN NxP 15 N-B5 P-N3
14 PxP P-K4? 16 PxN Resigns

After 16...BxP, 17 Q-R7 R-R, 18 N-N7ch and White remains a piece up.

Atlanta Quadrangular
January 7, 79

SICILIAN DEFENSE NAJDORF VARIATION

(W) Mike Decker (2120) (B) Byron Watson (1757)
Notes by the winner

Moves 1-7 are the same as the game above.

8 Q-B3 P-R3 11 B-K2 P-KN4
9 B-R4 QN-Q2 12 PxP N-K4
10 O-O-O Q-B2 13 Q-B2 (?-Ed.)

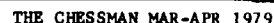
Boleslavsky recommends 13 Q-N3! R-KN1, 14 N-B3! NxB, 15 BxN R-R2, 16 Q-B2 PxP, 17 B-N3 and White is much better.

13 ... PxP 15 Q-B4 N-B7
14 BxP N(3)-N5 16 B-N5ch!?

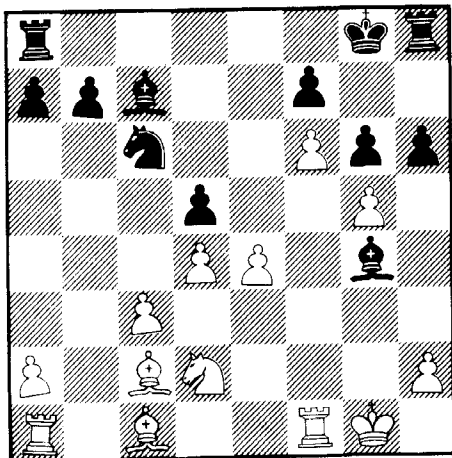
This whole variation was new to me and rather unsettling considering that Black had used only a few minutes for his first 15 moves. The obvious and theoretical 16 QxN(7) gives Black compensation for the pawn in the form of the Bishop pair, central pawn mass, and open King-side files for his rooks. I had wanted to try 16 BxB NxR, 17 BxP QxB, 18 RxN but then I noticed that 18 ...N-Q6ch wins my Queen. My Bishop sac, which is not mentioned in any theory that I have been able to uncover, was an intuitive bid for extreme complications--I had not figured it all out. With a fast time limit of 45/90 there was no way of calculating all the consequences.

16 ... PxP

Best may be 16 ...B-Q2 in which case White trades off the Bishops before snapping up the Knight on Bishop two--all of which seems an improvement over theory's immediate 15 QxN(7).



20 PxP ...
White takes the free pawn.
20 ... QxQ
The tension is too much for Black.
21 KPxQ ...
so White doesn't have doubled pawns.
21 ... B-B7
Trying to develop the QR.
22 PxP
Isolating Black's Q Pawn.
22 ... PxP (forced)
23 P-K4 ...
Frees up White's pieces.
23 ... B-N5
Developing & attacking at the same time to gain a tempo.
24 R-B1
Moving to the safest square.
24 ... P-KR3?



Better is QR-Q1, if 25 PxP RxP or if 25 P-K5 the King goes to Q2 to develop the King Rook, but Black is lost 25 PxQ ...
Attacking the Knight and so protecting the Knight Pawn.
25 ... N-R4
Best, as N-Q1 or N1 blocks the Rook
26 N-K4 R-K1
Planning to trade off with B-B4.
27 P-Q6??
The threat of Queening is strong. The weakness here is that the Bishop is forced to Q1 where it threatens the KBP.
27 ... B-Q1 (forced)
28 PxP
Trying to get as much material as possible.
28 ... B-B4
Planning 29 ..BxN, and 30 ..BxP
29 R-K1 ...
To defend the Knight.
29 ... K-R2?
Trying to connect the Rooks, but it doesn't work.
30 N-N5ch
Forks the King & pawn.
30 ... KxP (forced)
If K-N1, 31 RxRmate.
31 NxP Db1ch K-R2
32 N-N5ch
If NxR then KxR would give Black an advantage.
32 ... K ...
There is nothing better.
33 N-K4ch
Defending the Rook & Bishop.
33 ... K-R2
34 B-N5
Defending the KBP.
34 ... KR-B1??
Better was K-N1
35 P-B7
Attacking the Rook & Bishop.
35 ... R-K3
If RxP then 36 BxB RxB, 37 N-N5ch wins the exchange.

36 BxB
This begins a combination. If 36...BxN then 37 BxN and Black's Knight is pinned.
36 ... RxB (forced)
37 N-N5ch
Wins a Rook.
37 ... K-N2
(Resigns is also very good-JEM)
38 NxR KxP?
38...BxN is best, but Black is lost.
39 NxRch Resigns

MINIATURE MADNESS by Bill Wall

Miniature games are always delightful. A chess miniature is a brief encounter of a third kind. Some are instructive, some are just down-right blunders. We have all played miniature games, either as victim or creator. I invite you to send in some of your best miniature games. Here are a few of my shortest games.

IRREGULAR OPENING Statesville 1978

(W) Wall (1745) (B) Mitchell (1070)

1 P-K4 P-KN3, 2 P-Q4 N-QB3?, 3 P-Q5 N-K4?? (N-N1 or N-N5 was necessary), 4 P-KB4 and wins the Knight.

CARO-KANN DEFENSE Tacoma, Wash. 1969

(W) Wall (1522) (B) Witt (Unr)

1 P-K4 P-QB3, 2 P-Q4 P-Q4, 3 N-QB3 PxP, 4 NxP N-Q2, 5 Q-K2 KN-B3??, 6 N-Q6mate.

BIRD'S OPENING Beale AFB, Calif. 71

(W) Martinez (D) (B) Wall (C)

1 P-KB4 P-Q4, 2 N-KB3 B-N5, 3 N-K5 B-R4, 4 P-KN4 B-N3, 5 P-B5 P-K3, 6 PxP?? Q-R5mate.

VAGANIAN OPENING LPO - 1976

(W) Wall (1710) (B) Buchanan (1774)

1 P-Q4 N-KB3, 2 B-N5 P-Q4, 3 P-K3 P-K3, 4 P-QB4 P-B3, 5 B-Q3 PxP, 6 BxP?? (BxN), Q-R4ch and White resigns as his Bishop goes

CENTER COUNTER DEFENSE Wilkesboro, NC 1976

(W) Wall (B) (B) Collins (D)

1 P-K4 P-Q4, 2 PxP QxP, 3 N-QB3 Q-KB4? 4 N-N5 Q-K4ch, 5 B-K2 P-QB3, 6 P-Q4 Resigns. White will play N-B7ch and NxR soon.

BUDAPEST DEFENSE Thailand 73

(W) Preston (D) (B) Wall (C)

1 P-Q4 N-KB3, 2 P-QB4 P-K4, 3 PxP N-N5, 4 N-KB3 P-Q3, 5 PxP BxP, 6 P-KR3? NxP, 7 KxN?? B-N6ch and wins the White Queen.

QUEEN'S GAMBIT DECLINED Okinawa 72

(W) S. Williams (C) (B) Wall (C)

1 P-Q4 P-Q4, 2 P-QB4 P-K3, 3 N-QB3 N-KB3, 4 B-N5 P-KR3, 5 B-R4 P-KN4, 6 B-N3 B-K2, 7 N-QN5 O-O, 8 N-B7?? B-N5ch wins the Queen.

FALKBEER COUNTER-GAMBIT Guam 1974

(W) D Evans (D) (B) Wall (C)

1 P-K4 P-K4, 2 P-KB4 P-Q4, 3 KPxP QxP, 4 N-QB3 Q-Q1, 5 Q-K2 P-QB3, 6 QxPch B-K2, 7 QxNP B-B3!, 8 Q-N3 B-R5 wins the Queen.

ATLANTA KINGS

December 78

ENGLISH OPENING

(W) Alison Bert 1742 (B) Sharon Evans 1516

1 P-QB4	N-KB3	5 N-B3	N-QB3
2 N-QB3	P-K3	6 P-Q4	PxP
3 P-K4	P-QB4	7 NxP	NxP
4 P-K5	N-N1	8 N/4-N5	...

The main alternative here is 8 B-B4

8 ... P-QR3

Karpov has here played 8...P-B3. The text move was Hort's choice in his 77 match with Spassky

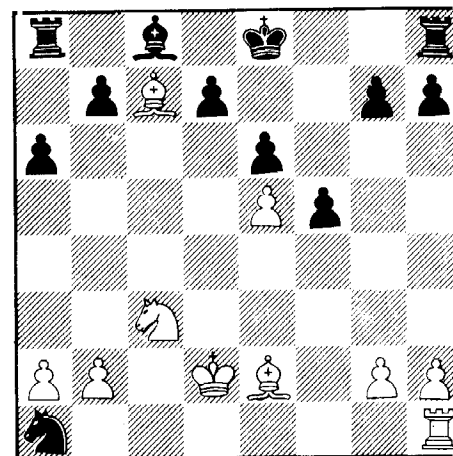
9 N-Q6ch	BxN	11 B-K3	...
10 QxB	P-B3		

Spassky played 11 P-QN3, 12 B-N2, 13 O-O-O

11 ...	N-K2	13 BxQ	NxQ
12 B-N6	N-B4	14 B-B7	N/3xP

Kavalek questioned this move in the notes to his game with Huss in this variation, claiming that now 15 P-B4 would win. It did.

15 P-B4	N-K6	18 B-Q3	P-B4
16 PxN	N-B7ch	19 B-K2	...
17 K-Q2	NxR		



White's positional edge is obvious and far outweighs the slight material deficit. Black should probably consider castling and then getting her Q-side pieces in play.

19 ... N-N6ch?

wastes a move needed for development and King safety. A few more wasted moves lead to a bloody denouement.

20 PxN	K-B2	24 PxP	KPxP
21 R-KB1	K-K2	25 N-Q5	P-QR4
22 B-Q6ch	K-Q1	26 B-K7ch	K-K1
23 P-KN4	P-KN3	27 B-B6	Resigns

SICILIAN DEFENSE DRAGON VARIATION

(W) Van Vandivier 1914 (B) Tom Morris 1955

1 P-K4	P-QB4	8 Q-Q2	O-O
2 N-KB3	P-Q3	9 B-QB4	B-Q2
3 P-Q4	PxP	10 P-KR4	R-QB
4 NxP	N-KB3	11 B-N3	N-K4
5 N-QB3	P-KN3	12 P-KR5	NxRP
6 B-K3	B-N2	13 P-KN4	R-B5
7 P-B3	N-QB3	14 PxN	...

Considered dubious by theory, at least in ECO which recommends 14 BxR with dynamic, if not material, equality.

14 ... RxN

Threatening RxQ and NxPch.

The innovation. ECO gives 15 Q-B2 R-Q6! with advantage to Black or 15 Q-N2 Q-N3 with good play for Black.

15 ... R-N5 16 PxP ...

White could win the exchange with 16 P-R3, but prefers this more forcing line.

16 ...	PxP	21 QxBch	K-K2
17 0-0-0	R-K1	22 Q-N5ch	P-B3
18 Q-R2	P-K3	23 R-R7ch	N-B2
19 Q-R7ch	K-B1	24 N-Q5ch	PxN
20 B-R6	BxB	25 QxQP	Resigns

ATLANTA INVITATIONAL December 18, 1978 FRENCH DEFENSE

(W) Mark "The Shark" Coles 1911
(B) Stan Vaughan 2021

1 P-K4	P-K3	4 P-K5	KN-Q2
2 N-QB3	P-Q4	5 P-Q4	P-QB4
3 N-KB3	N-KB3	6 B-KN5	...

Stronger here is 6 B-QN5 as in Gingen-
idze - Fuchs, 1969 which continued 6...
N-QB3, 7 0-0 P-QR3, 8 BxN PxB, 9 N-QR4
B-K2, 10 P-B3 0-0, 11 P-QN3 PxP, 12 PxP
N-N3, 13 NxN QxN, 14 B-N5 with advantage
to White. However, in my opinion,
Black could have obtained a good game
with 7...PxP.

6 ...	Q-N3!	21 Q-B6	KR-N
7 B-N5	P-QR3	22 B-N3	R-N3
8 BxNch	BxB	23 Q-B3	Q-B5
9 Q-Q2	PxP	24 R-K3	N-N4
10 NxP	N-B3	25 N-N2	NxN
11 N-B3	R-B	26 PxN	QxP
12 0-0	N-R4	27 R-N3	B-N4
13 N-Q	N-B5	28 R-Q	Q-B5
14 Q-B4	P-R3	29 P-R4	P-N5
15 B-R4	B-N4	30 Q-B4	Q-B7
16 P-R4	B-Q2	31 RxB?	PxR
17 P-QN3	N-R6!	32 RxP?	PxR
18 P-B3?	QxP	33 P-K6?	Q-B8ch
19 N-Q4	QxRP	34 K-R2	and White
20 R-K	P-KN4	Resigned.	

CHARLIE AND SAM



JUST THINK. THIS IS THE GAME OF KINGS!

to join the N.C. Chess Association. Anything
you can do to help us, including advise,
will be appreciated. We have excellent fac-
ilities since our county just completed a
beautiful Parks and Recreation Bldg.

The Sandhills Chess Club, Wed. Nights at
The Parks & Recreation Bldg. conference
room, Rockingham NC.

Thomas Allen

Read "You and Your Chess Club" -Ed.

NOTICE

Greatly improve your Chess with Private
Lessons, having your games and positions
analyzed or having a Simultaneous Exhibi-
tion or lecture at your local club. For
information write National Master Robert
M. Snyder, 14282 Jessica St., Garden Grove,
Ca. 92643 (Enclose stamped env.). Also "
Snyder Sicilian" (2. P-QN3) only \$2.00.

B. Georgia H.S. Chess League
C. upcoming tournaments.
D. smoking at GCA no smoking tournaments
(consensus against - Ed.)

Jared Radin

CHESS CLUBS IN NORTH CAROLINA By Bill Wall

One of the most active chess clubs in North
Carolina is the Statesville Chess Club. This
club has over twenty active members with a USCF
rating range from 1000 to 1800.

The club meets every Friday night at the
Statesville Recreation Center from 7 to 11 PM.
President Ray Bell contacts each player individ-
ually and schedules matches between players. If
they are unable to meet on Friday, another day
is scheduled.

I run a computer analysis of all players and
matches. Every week a computer print-out lists
each player, old rating, new calculated rating,
the number of wins, losses and draws and total
number of games played to date. The club ratings
are based on USCF ratings. Over 60% are NCCA
members.

There are no dues or fees charged. After the
club meetings most players go out and discuss
their games or ways to attract more interest to
chess.

The Statesville Recreation Center on W. Bell
Street hosts several rated events and sponsors
the annual Dogwood festival chess tournaments in
April.

If you would like further information on this
club, please contact Ray Bell at 876-0352.

CHESS 0.0

Greetings. To start with the membership of the
NCCA stands at 287. The treasury stands at \$351.
31. Please note that memberships expire on the
first of the month indicated. The deadline for
the list of members to send to The Chessman is
the 15th of the even numbered months. If I
don't have your renewal by the 14th you will
miss that issue.

We have not been receiving any material, es-
pecially games, for our section of The Chessman.
If you have any interesting games or other chess
related material send it to Sean O' Brien, 537
Hinton James, Chapel Hill, N.C. 27514. Remember
our section of the magazine will only be as good
as you make it.

Details of the NC Scholastics can be found
elsewhere in this issue. Please encourage any
high school or below players to participate.

Anyone with suggestions about directions the
NCCA should take please write me at the address
on the officers page.

Tom Galloway
Sec./Treas.

MOVING? Send us your new address.

CLUB NEWS & OFFICERS REPORTS

The St. Petersburg Chess Club has rec-
ently elected new officers, they are as
follows:

President	Gary Sanders
Vice Pres.	Gilbert Cantrell
Treasurer	Harry Derring
Secretary	Bill Wheatland
Directors	Roy Oster
	Gene Randolph
	Sam Pravdo

Are there any chess clubs in Burlington
N.C. ? If you know of any please inform me.
Oscar W. Notnagle

FINANCIAL UPDATE

(Ga)

As of 2/10/79, the GCA's cash position
was \$471. as opposed to \$410. at the be-
ginning of the fiscal year in May 78. The
GCA has had difficulty collecting \$165.20
of debts for newsletter sales, but will
continue efforts to do so. The GCA has a
liability of over \$1400. to winners of the
World H.S. Championship, but much of that
amount represents funds to be paid in 2 or
more years. A detailed statement will ap-
pear in the next issue of The Chessman.

Steve Hunt

REPORT ON THE GCA OFFICERS MEETING (Ga)

The meeting was held on Feb. 4th. Off-
icers present were Steve Schneider, Thad
Rogers, Steve Hunt, Jared Radin, Mike
Decker, and Bill Noyes. Earle Morrison was
also present. The following topics were
covered:

- 1) The state championship was changed to
May 12-13.
- 2) Approval of a \$5 per class fee to be
paid by GCA to teach chess classes to a
maximum of \$120.
- 3) Approval of a state speed championship
and state handicap tournament with date &
details to be determined.
- 4) Discussion of Tucker Classic to be
taken over by the GCA, details on the
Southern Congress were finalized,
- 5) There was discussion on the following:
A. The Chessman.

The Jacksonville Chess Club is holding
two tournaments, one May 19-20, the other
June 23-24. The first is the Jacksonville
City Championship, the second is a \$2000
Jacksonville Classic Open Tournament, both
will be held at Phillips Mall Shopping
Center, 3563 Phillips Hwy.

The new President of the club is Edwin
Butler, 711 Valley Forge Rd., Jax, Fl.
32208; George Jackson is the Vice Pres.;
Ed Miller is the Sec-Treas.; and Harold
Casney is newsletter Editor.

I would like to announce the organi-
zation of a new chess club in NC. We
have applied for our USCF affiliation
and are presently working up all our

DECKER TO GIVE LECTURE

Mike Decker, Georgia's highest rated player, will give a lecture and answer questions on middle-game strategy and tactics at the Northeast Chess Club on Thursday March 22nd from 7 to 8 PM. Other clubs or groups interested in hosting such talks should contact Mike at 1604-4 Briarcliff Rd., Atlanta 30306.

PALMETTO CHESS CLUB MOVES

The Palmetto Chess Club will now be meeting in the cafeteria of the Wade Martin Building of Midlands-Tec, Beltline Campus. The meeting time is from 7 PM. to 10:30 PM., Thursdays.

NOTES

By South Carolina Editor Lee Hyder

We have available for this issue the full crosstable of last year's South Carolina Championships, and enjoyed taking another look at the results. Now, a little late perhaps, it is still appropriate to acknowledge the winners of the two very fought lower sections.

Hard-fought indeed! When have you ever seen a clear winner with a 4-1 score? That's what Marion Mahaffey achieved in the Booster Section despite being the sixth rated player at the beginning of the competition. His win over Albert Cantrell in the fourth round put him in the lead that he did not yield, finishing with three straight wins.

The Reserve Section was just as hard-fought, but with more competitors there were no fewer than four players tied at 4-1 for first. Manuel Keepler, Bill Dodgen, William Bland, Jr., and David Erb all achieved this score, and none of them lost a game! Neither did Michael Houk, who finished just behind them with 3½ points.

As you may have observed, it was a good tournament for SCCA officers. With those competing finishing on top of their sections. When did that last happen? It's been a long time! Elections to office is normally no guarantee of chess success.

Statisticians among our readers may be interested in looking at the "before" and "After" ratings of the players to observe the effect of current rating practices. Not only does a 5-0 score carry a big bonus of rating points for its achiever, but his opponents also benefit considerably from "feedback" points. Thus Randy Ferguson, who lost two heart-breaking games in the last two rounds, can console himself with a net rating gain!

Publisher Morrison sent an advance copy of my remarks in the last issue to George Cunningham, then serving as Staff Director of the USCF. George then wrote me, taking me to task for advocating that the USCF lose money on book sales, which he said would have been the result of following the pricing policy of his predecessor Martin Morrison. Both Martin and George have been respected friends of mine for some years, and I have no figures that would allow me to comment further. I didn't advocate losing money; I simply think that where the USCF has a monopoly on an item, its pricing policies should primarily represent the interest of the membership as a whole. I hope that is being done.

Around the state, play goes on. In the next issue we hope to have the results of a big invitational tournament held upstate by Stan Vaughan in mid-February, and of the Charles H. Walter Memorial held at Midlands Tec on March 3-4. Don't forget to send that material in, fellows! In the lower part of the state the famous U.S. Grandmaster Arthur Bisguier and the Sea Pines people organized a special chess holiday at Hilton Head in January; nineteen avid players participated, and a good time was had by all, including many of their wives. Joan Schlich came over from Charleston to help in the organization, and then brought Arthur to Augusta for an exhibition organized by the North Augusta CC and Bill Dodgen. Twenty of Augusta's best could take only one draw from the genial grandmaster; Dr. Carl Crosby managed that, nearly winning a queen and pawn ending. There is probably no one in chess today any more pleasant to talk to or play chess with than Bisguier, and we hope he comes back frequently to the South.

USCF matters remain of some interest. Henry Buckman, Regional Vice President from Florida, resigned his seat last fall, and a special election to fill his seat will probably be over by the time you read this. Candidates for the Policy Board seat that comes open in 1979 will be filing by April 1 for the election next summer. New Director Meyerson took his position in New Windsor at the beginning of January; George Cunningham returned home but the rest of the interim staff stayed on, at least temporarily.

The Chessman does not send out advance copies of its material, and did not in this case. If Editor Hyder would like to pursue this matter he should submit the letter so that we can see exactly what information Cunningham had by what date.

LETTERS TO THE EDITOR

I enjoy your magazine immensely.. all departments and features!!

Oscar Nothnagle
Burlington, N.C.

Dear Arnold;

In 1937 I was knocking around NYC came up to the Manhattan Chess Club. In 1939 Horowitz was a good friend. I got quite a few exhibitions, lived up in the Philadelphia suburban area for a time. At the time he and S. Cohen and Fred Reinfeld also Ike Kashdan were starting the Chess Review. I culped support it with this. After an evening of fun at the Manhattan I used to have a few drinks at some bar on the way home with you.

You were, and it appears as though you still are, a fine person. I am retired up here (70) and belong to the Florida Chess Association want to give you our club for your directory. (And he did- JEM)

Fred Arnold
Melbourne, Fl.

Dear Earle;

The magazine looks great, and I especially like your use of space. I would like to see some statement in The Chessman's editorial pages concerning the USCF's alarming new price rise.

Larry Storch
FCA VP.

NOTE: The Jan/Feb issue of The Chessman sold out about 10 days after printing. The problem was so acute that Publisher Morrison donated his copy to be sent to Pennsylvania after at least three phone calls and letters from the President of PSCF which went like this.

Earle- enclosed is \$10 for (20 additional copies)

Please
Ira

Dear Earle,

We believe a strong state organization is necessary to help chess and the local clubs.

I greatly appreciate you holding the back page for our June tournament the Classic Open. This tournament is an annual affair with us and we are trying to make it into one of our big tournaments by using the prize money. We want players from all over to come. As an added attraction we are planning a full day for the ladies so that many players can bring the wife and family.

We are attempting to get our club really active...We are having at least once a month one USCF rated tournament for local players and at least four tournaments a year for players from all over. At the same time we hope to keep increasing the prize money.

We will be happy to contribute to The Chessman and I will talk to Harold Casney about this. Our letter (newsletter) is not designed for competition to you, but to have our local members informed about club matters.

A piece of information for your magazine- We have just started to redo our constitution so that we can incorporate as a non-profit organization. This will help us in many ways.....

I am sure that together we will help each other make chess strong in the Southeast....

Ed Butler
Pres. of Jax. CC

Dear Earle:

July 27, 1978

Thanks for your various materials, which I shall bring with me to the Phoenix meetings.

Let me reiterate my support for regional publications, even as I note my disappointment that the tournament in which I played last February in Tampa didn't make your issue. I'm sure this was a conspiratorial reaction to the fact that this "carpetbagger" actually won a prize, and I shall take my disappointment to the grave.

More seriously, ...

Gary H Sperling
New York, N.Y.

NOTE: Sperling, at the time, was a well known class A player from N.Y.

The Chessman freely admits that the letters above have been printed to answer the ones to follow, however, nothing relevant has been omitted from the letters and all, except those specifically requested not to print, have been or will be printed.

Dear Mr. Morrison,

..... Printing all the crosstables of the combined area (as The Chessman apparently does) is, in my opinion, senseless.

George

The crosstable from the Tampa tournament was not printed because the tournament was not state association required. Many Chessman subscribers read only the crosstables. Obviously, if The Chessman is going to satisfy the needs of reader Sperling we will have to print all of the crosstables. Former GCA Officer Barry Barrentine won the Open Section of the PSCF-Concerned Black Men Tournament in Philadelphia, his father also played, that is very interesting to this editor. -Ed.

Dear Editor,

As a member of the FCA, I applauded the merger of Ga. with Fl. and S.C. My only fear was that it was to large an area for a single magazine to cover in depth. A few months later, I received the July/August 78 Chessman in a radically new format and learned that Al. had joined the "SOUTHEASTERN CHESS SOCIETY". I accepted the admittance of Al. with few regrets only to find the next issue there had been another major change. Somehow Al. was out and NC soon took its place. This too, I accepted. At least North Carolina could be called Southeastern. Then today I received the newest CHESSMAN magazine. Pennsylvania had joined what was formerly the SOUTHEASTERN CHESS SOCIETY. By no stretch of the imagination can a magazine catering to chess players from Fl. to Pa. be called a regional publication. The purpose of supplying regional chess players with a magazine that they can relate to personally cannot be accomplished by a magazine with such a readership

that includes Pa. or any other state that is so geographically apart from the Southeast.

On the positive side I would just like to say that I heartily approve of the more concise printing now being used by the CHESSMAN. On a closing note I would like to point out that of 35 published games published in the last CHESSMAN not a single one used algebraic notation as recommended by FIDE.

Sincerely,
Alan D. Tenan

One issue raised by this letter is how many states can one magazine cover on a local and personnel basis? Endless logic has been offered by those who believe few or one, but the experience of The Chessman indicates a far greater number, perhaps ten, possibly more. For the reasons that follow:

1. Economies of scale -

In the printing process itself economies of scale are phenomenal, to print one character on one page cost The Chessman about one tenth what it cost a typical state organization.

2. Other economies of scale -

The cost of telephone, bank account, postage, and equipment are relatively less. This is true on both the revenue and expense side of the ledger.

3. Elimination of redundancy -

Many of the state publications printed results and articles on the recent USCF elections, each time a state printed that there was a set up cost which The Chessman only incurred once. Articles written on the Pan Am have or will appear in many magazines, each time with a set up cost.

In sum, state magazines cover some national and international news, the set up cost for The Chessman for this is by definition one fifth.

Essentially, there are three conceptual disadvantages to adding states, they are as follows:

1. Economies of scale will run out, the law of diminishing returns will set in.

Maybe, but not anytime soon. Magazine businesses reach optimum levels at volumes upward of 200,000 a week.

2. The printing of local news and sending it to an ever increasing number of states is inherently uneconomical.

The logic here is good, but the question is what is local news? If you read this issue completely, you will see that to Barry Barrentine Philadelphia is local, to Gary Sperling Tampa is local, to Mark Solomon Atlanta is local, to Fred Arnold the Manhattan Chess Club is local; during the last twenty years America has changed from the mobile society to the homogenized society. The term, local, may not be relevant to what we are about, anymore. It may well be that the promotion of provincial chess is irrelevant to the needs and character of our nation, and as such a step in the wrong direction.

There can be no doubt that the USCF is going in the opposite direction.

3. Logistical problems - There are some, particularly in small towns far from Atlanta, like Largo Fl., steps can and will be taken to alleviate these.

You mention or allude to other problems:

1. Instability - The Chessman, as of now, is stable.

The Chessman is growing, dynamic, and evolving rapidly, but it is stable. Some state organizations are not stable, but The Chessman tends to have a stabilizing effect.

2. Algebraic notation - The universal language of our readers is descriptive notation. Keep in mind The Chessman is sold on newsstands, you cannot sell Algebra in a chess magazine on a newsstand. JEM.

PHILADELPHIA AWARD

Two chess coaches in the Philadelphia public schools were named recipients of the prestigious Philadelphia Award for 1978.

The coaches, Michael J. Sherman and Stephen Shutt, both math teachers, will share the \$15,000.00 prize.

The teachers founded their schools chess teams, both of which have successful records. Sherman teaches at Vaux Junior High School and Shutt at Douglass Elementary School.

The Vaux team, founded in 1975, has won 85 of 87 matches, losing only its first match and a match via satellite with students in Belgrade, Yugoslavia. The team has won four city championships and two national championships.

They will be taking their teams to Yugoslavia in mid-May and will not defend in the state scholastic tournament.

"Jude Acers has done more for the promotion of chess and chessmasters than all of the USCF promotional programs combined" Lombardy.

CLEARINGHOUSE REPORT

The following tournaments are scheduled throughout Florida for 1979:

Mar 17-18	Tampa	I.C.I.
24-25	Miami	M.C.C. (?)
Apr 14-15	Tampa	I.C.I.
28-29	Gainesville	I.C.I.
28-29	Largo	Tenan
May 4	Largo	Tenan
12-13	Tampa	I.C.I.
19-20	Jacksonville	Jax C.C.
25-27	St. Petersburg	Claxton
26-27	Miami	M.C.C. (?)
Jun 2-3	Orlando	I.C.I.
9-10	Largo	Tenan
23-24	Jacksonville	Jax C.C.
23-24	Tampa	I.C.I.
Jul 21-22	Tampa	I.C.I.
28-29	Miami	M.C.C.
Aug 11-12	Orlando	I.C.I.
31-3	???	F.C.A. (State Champ.)
Sep 22-23	Orlando	I.C.I.
29-30	Miami	M.C.C. (?)
Oct 6-7	Tampa	I.C.I.
27-28	Orlando	I.C.I.
Nov 10-11	Tampa	I.C.I.
Dec 1-2	Miami	M.C.C. (?)
8-9	Miami	M.C.C.
8-9	Tampa	I.C.I.
29-30	Orlando	I.C.I.

For further information, write: John Claxton,
P. O. Box 10334, St. Petersburg, Fl. 33733.

GCA Secretary Jared Radin is the Georgia clearinghouse.

CHARLIE AND SAM



IF WE HURRY, WE CAN MAKE
THE 3:45 TO LONE PINE!

JUDE ACERS SIMULTANEOUS EXHIBITION
MARCH 22-24

Jude Acers will play young players at the Marriott Hotel in downtown Atlanta on March 24, contact Steve Schneider or Tom Morris if you would like to play. Jude will lecture on the World Championship. Jude will also visit Atlanta prisoners.

WHERE TO PLAY CHESS

FLORIDA

Coral Gables

Coral Gables Memorial Youth Center, Mon. 7 PM call P Daich 2798720
Jacksonville
Community Hall at the Phillips Mall Shopping Center 3563 Phillips Hwy. Wed. at 7:30 PM.

Melbourne

Melbourne CC, Old Civic Center, Front St. call Fred Arnold 7242704
Mon. 12 noon - 6 PM, Thu. 7 - 11 PM.

Orlando

Orlando Rec. Bldg. Paramore & Livingston, Wed. & Fri. 7:30 PM and Sunday 1:30 PM. Call Larry Storch 2734982.

Pompano Beach

Pompano Beach Rec. Center, 1801 N.E. 6 St. Fri. 7:30 PM.

St. Petersburg

St. Pete CC, 540 4th Ave. N., call G. Cantrell 5276010

Tallahassee

Tallahassee CC, FSU Univ. Union, Woodward Ave. & Tennessee St., Rm. 346, 7 PM Tuesday.

GEORGIA

Adel

Cook County CC, Cook High School, Thursday 3:05 P.M.

Albany

Albany CC, NW Branch Library (Day and time unknown)

Athens

Athens CC, Dudley Park, Thursday 8 PM.

Univ. of Georgia CC, Chemistry Bldg. Rm. 1505 Wed. 7:30 PM.

Atlanta

Emory Univ. CC, "Coke Lounge" Student Center, Sat. 12:30 PM.

Northeast CC, St Michaels Church 3323 Chestnut Dr. Thur. 7 PM.

Augusta

Augusta CC, Augusta Rec. Center, Wed. 7:30 PM

Dalton

Dalton CC, contact William Strain 1508 Dug Cap Road

Gainesville

Lanierland CC, Breneau College, Yonah Hall, 7:30 PM Tues.

Columbus

Columbus College, Davidson Center, Wed. 7:30 PM

Macon

Macon CC, Robert Train Bldg. Oglethorpe Blvd. Wed. 7 PM.

Marietta

Cobb County CC, Library 2051 Lower Roswell Rd., Thursday 7:30 PM.

Rome

Rome CC, Rome Rec. Center, 300 West Third St. Fri.

Savannah

Armstrong College CC, Gamble Hall, Fri. 12:30 PM.

Savannah CC, Duffin Park Activities Bldg. Monday 7 PM.

St Simon's

St Simon's Island CC, Island Club, 800 King's Way, Monday 8:00 PM

Thomaston

Thomaston CC, Civic Center, Tuesday 7:30 PM.

Valdosta

Valdosta CC, Tall Tree Apts. Rec. Center, 200 Connel Rd. Tue. 7:30

NORTH CAROLINA

Fuquay-Varina

Fuquay-Varina CC, Fuquay-Varina Sr. High School, 201 Broad St. Thursday 2:30-4:00 PM.

High Point

High Point CC, Oakview Rec. Center, James Road, Thursday 7 PM.

Mars Hill

Mars Hill CC, Mars Hill College, Memorial Library, Thursday 7:30

Asheville

Asheville CC, North Asheville Community Center, Wednesday 6:30 PM.

SOUTH CAROLINA

Charleston

Charleston CC, Post Courier Bldg. 6296 Rivers Ave. Wed. 7 PM.

Clemson

Clemson CC, Church of Christ meeting room 212 Seneca Rd. 6 PM. Monday thru Thursday.

Columbia

Palmetto CC, Blue Cross/Blue Shield Bldg., Alpine Rd. at I-20, Thursday 7:00 PM.

Univ. of S.C. CC, Moore Dormitory Conference Room, Mon. 8 PM.

Greenville

Greenville CC, Bobby Pierce Community Center, Townes St., Wed. 7:30

Lancaster

Lancaster CC, Star Hall, Univ. of SC at Lancaster, Thursday 7 PM.

North Augusta

Augusta CC, Augusta Rec. Center, Wednesday 7:30 PM.

Spartanburg

Spartanburg CC, Sugar & Spice Cafe, North Pine St. Tue. 7:30 PM.

Bring your sets to the chess clubs. Many college clubs do not meet during the summer.

TOURNAMENTS

10TH SOUTHERN CONGRESS / H.S. CHAMPIONSHIP MAR 3-4 Ga.
Radisson Inn, 1850 Cotillion NE, Atlanta Ga. 30338, call 800-228-9822 for reservations and info. In 4 sections, Open, 5-SS, 4/2,

EF: \$14.00 if received by Feb. 24; \$16.00 at site. Prizes: (\$400 on 40) \$150 and Trophy - \$90 - \$60; Class B \$50; Below 1600 - \$50.
Amateur: (Open to under 1500 or unrated), EF: \$13.00 if received by Feb. 24; \$15 at site. Prizes: (\$300 on 30) \$120 & Trophy - \$60 - \$40; Classes D & E/UNR. each \$40. Both, REG: Ends at 9:30 AM. RDS: 10-3-8; 10-3. H.S. Championship, 6-SS, 40/80, EF: \$11.00 if received by Feb. 24; \$15.00 at site. Prizes: Trophies to Top 5 players, Top 4 four man teams; \$150-100-50 towards National H.S. Expenses (Phila) to Top 3 players and Top 3 teams (Must play in National H.S. to get expenses) REG: Ends at 11:15 AM. RDS: 12-4:30-8:30; 9-1-5. H.S. Novice, 6-SS, 40/1, Open to under 1400 or unrated. EF: \$10.00 if received by Feb. 24; \$13 at site. Prizes: Trophies to Top 5, Top E, Top Unrated, Top 4 four man teams. REG: Ends at 10:15 AM. RDS: 11-3:30-7; 9-12:30-4. Both, Open to all High School & Pre-High School students in AL, AR, FL, GA, KY, LA, MS, NC, SC, TN, or VA. ALL: Hotel Rates \$29 up to 4 in a room. GCA Mem Req. (Other states OK). Enter: ICI, 3055 General Lee Rd., Macon Ga. 31204. NS. There is a 1/2 point bye available to elementary students in round 3 if requested in advance.

FLORIDA STATE HIGH SCHOOL CHAMPIONSHIP MAR 9-11 FL.

6-SS, Open to all Florida residents in grades 7-12, Entry Fee \$7. if received by 3-2-79, \$9. at site. REG: closes at 6:30, Mar. 9. Rds: 7:30, 9-2-7, 9-2. J.W. Reitz Union on Museum Road, University of FL., Gainesville, Florida. Hotel Rates \$17-19 at Reitz Union. USCF (\$2.50 or \$8.00) and FCA (\$3.00) membership required. Enter: Mark Solomon 4117 SW 20th Ave., Gainesville, FL. 32601. Trophies to 1st, 2nd, 3rd, 4th, 5th ind., 1st, 2nd, 3rd teams, 1st woman, 1st JHS player. Winner and runner-up will receive expenses to the National H.S. Championship Sponsored by UF Chess Club. FREE SIMULTANEOUS EXHIBITIONS given by former state high school champion John Nardandrea and former state and national high school champion Gregg Small!!!

IREDELL COUNTY OPEN MAR 10 NC

3-SS, Stateville Rec. Dept., 510 W. Bell St., Statesville. EF: \$4.00 Prizes per entries. REG: 8-9 AM., RDS: 9:30-12:30-3:30. ENT: Bill Wall, Box 167, Stoney Point, N.C. 28678. LS, NCCA Req'd (Others OK).

ATLANTA HANDICAP OPEN MAR 10 Ga.

4-SS, Northwood Presbyterian Church, 3330 Chestnut Dr., Doraville (Atlanta) Ga. Here's your chance to get revenge on that A player or Expert who's beaten you three times in a row! EF: \$5 if Rec'd by 3/4; \$7 at site. Time Limit: lower rated player gets 1 hour for 40 moves, higher rated player receives less. For example, if there is a 600 pt. difference, the higher rated player gets 1/6 of an hour, or 10 minutes for 40 moves. GCA Req'd (Others OK) Reg: 12-12:30 PM. NS. Enter: Steve Hunt, 4153 Wesley Club Dr., Decatur, Ga. 30034. Round 1 at 1 PM others as soon as possible. Tournament should conclude by 6 PM. NOT USCF RATED OR REQUIRED.

CATAWBA COUNTY OPEN MAR 17 NC

Hickory Room, Cromer Center, Lenoir-Rhyne College, Hickory, NC. (Other details same as Iredell County Open, Mar. 10).

RAM III MAR 17 NC

3-SS in 8 player sections, Carolina Union, UNC, Chapel Hill. EF: \$3. 40/100 top section, others 40/90. \$15 to 1st in top section, Trophies to others. REG: 9-10 AM. Rounds at 10:30-3-7. NCCA Req'd (Others OK) Enter: Tom Galloway, 411 Morrison, Chapel Hill. LS.

2ND ANNUAL ATHENS OPEN MAR 17-18 Ga.

5-SS, 45/2, Ramada Inn, 513 West Broad St. (On US 78), Athens, Ga. 30601. EF: \$14 if rec'd by Mar. 10; \$16 at site. Prizes: (\$550 based on 55 entries) \$140-70-40; Classes A,B,C,D,E/UNR. each \$60. Trophy to Top Chess Club if there are 4 four man teams. REG: Ends at 9:30 AM. RDS: 10-3-8; 10-3. GCA Mem req'd; (Others OK). Hotel: \$14.50-20.00-24.00. Enter: ICI, 3055 General Lee Rd., Macon, Ga. 31204. NS.

PSCF/CONCERNED BLACK MEN'S #6 MAR 17 Pa.

Open Section: 3-SS in 8 man sections, 40/1, EF: PSCF Mems. \$5 others \$6.50, Prizes: \$30-14-8 each section.
Scholastic Section: EF: \$2 to non PSCF Mems., USCF & EF \$4.50, 4-SS, TL: 30/30, Trophies to top 3, \$5 gift certificates to 4th & 5th each 16 man section.
Both: Reg: 8:30-9:15 AM, Round 1 at 9:30 AM, then consecutively. Enter: Mike Sherman, 5939 Hutchinson St. Phila., Pa. 19141

3RD ATLANTA STEAK AND BOOKS MAR 18 Ga.

3-SS in 6 man sections, 45/90, Bonanza Sirloin Pit, 2915 Clairmont Rd. N.E., Atlanta, Ga. 30333. EF: \$7.95 if rec'd by Mar. 10; \$8.95 at site. Prizes: \$20 in books to 1st each section: FREE steak dinner to all. REG: Ends at 9:45 AM. RDS: 10-1:30-5. GCA Mem req. (Others OK). Enter: ICI, 3055 General Lee Rd. Macon Ga. 31204

MARCH QUAD. MAR 24 Ga.

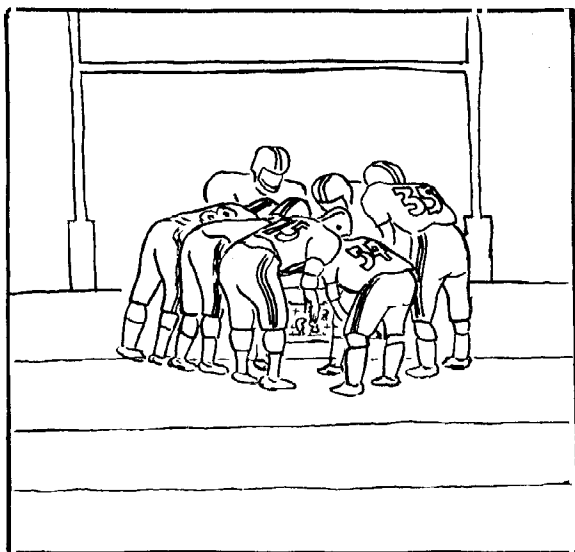
3-RR, TL: 40/80, Camelot Inn, 1706 Clairmont Rd. Decatur (Atlanta). EF: \$5, if rec'd by 3/17; \$7 at site. Trophy to winner each section REG: 8:30-9:30 AM RDS: 10-1:30-5. GCA Req'd (Others OK). NS. Enter: Steve Hunt, 4153 Wesley Club Drive, Decatur, Ga. 30034.

TIGER II MAR 24 NC
3-SS in 8 man sections, 40/90, Fuquay-Varina Sr. High School, 201 Broad St., Fuquay-Varina, NC 27526. EF: \$3 if rec'd by 3/19; \$4 at site. Prizes: Trophies to top each section. REG: 8:30-9:30 AM. LS RDS: 10-2-6, Enter: Tres. Prince, 610 Angier Rd., Fuquay-Varina, N.C. 27526.

ATLANTA SPRING OPEN MAR 24-25 Ga.
5-SS, Camelot Inn, 1706 Clairmont Rd., Decatur (Atlanta). REG: 8:30-9:30 AM. Enter: Steve Hunt, 4153 Wesley Club Dr., Decatur, Ga. 30034 GCA Req'd (Others OK), NS, RDS: 10-3-8, 10-3, Hotel Rates \$16-20, reserve early, call Joy Cody (404) 634-3311. In two sections:
Open Section: TL: 45/2, EF: \$15.50 if rec'd by 3/17, \$18.50 at site Prizes: (Based on 30) \$125-75-50, A, B each \$40.
Amateur Section: Open to under 1600 & Unrated, TL: 40/90. EF: \$12. if rec'd by 3/17; \$14.50 at site. Prizes: (Based on 30) \$100-60-40, D/E, Unrated each \$35.

ATLANTA TORNADO MAR 25 Ga.
Location, Enter, Smoking & Memberships same as above. 3-SS in 8 man sections, TL: 30/30, EF: \$4.50 if rec'd by 3/17; \$6 at site. Trophy to top two each section, RDS: 1-3-5

NORTH CAROLINA SCHOLASTIC MAR 31-1 NC
5-SS, 40/90, Enloe Sr. High School, 226 Clarendon Crescent, Raleigh NC 27610. EF: \$5.00 if rec'd by 3/27, \$6.00 at site. Open to all full time students in NC. NCCA req. (Under 18 - \$3.00). Team and individual prizes. Top person \$30, Top Jr. High \$15; Top team \$30, Top Jr High team \$25. Trophies to top 3; top 2 Jr. high; top elem. top C,D,E, Under 1000, Unr., Top Girl; Top 3 teams, top two Jr. teams. REG: 8:30-10 AM (3-31). RDS: 10:30-2:30-7; 10-2:30. Enter: Larry Mathews, 5412 Dutchman Rd. Raleigh, N.C. 27606.



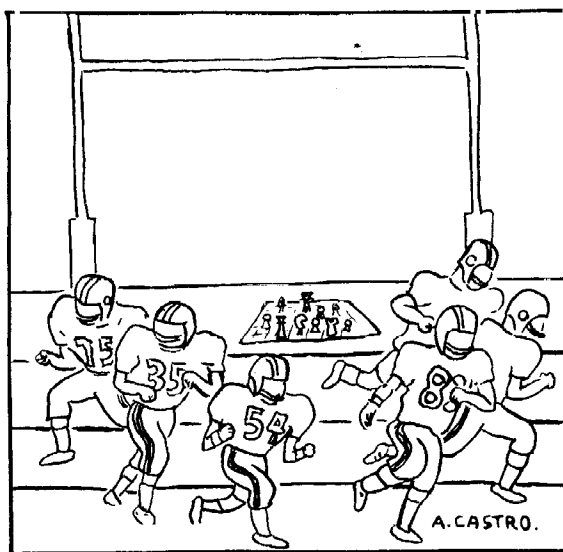
UNIVERSITY OF SOUTH FLORIDA OPEN APR 14-15 Fl.
5-SS, 45/2, University Center Room 252, University of South Florida 4204 East Fowler Road, Tampa, Fl. 33620. EF: \$14.50 if rec'd by 4/3 \$15.50 at site. Prizes: (Based on 58 entries) \$ 200-100-50; Classes A, B, C, D, E/Unr. each \$50. REG: Ends at 9:45 AM. RDS: 10-3-8; 10-3. QUADS: BOTH DAYS 3-RR, 40/90, EF: \$8, Prizes: \$20 to 1st each sect. FCA Mem req'd (Others OK). Enter: ICI, 3055 General Lee Rd., Macon, Ga. 31204. NS. RDS: 10-2-5:30.

PSCF/CONCERNED BLACK MEN'S #7 APR 21 Pa.
Details same as

GEORGIA - SOUTH CAROLINA OPEN APR 21-22 Ga.
5-SS, 45/2, Ramada Inn-Airport, 1365 Gordon Highway, Augusta, Ga. 30903. GCA Mem req'd (Others OK), Enter: ICI, 3055 General Lee Rd., Macon, Ga. 31204. NS. In two sections:
Open Section: EF: \$14.50 if rec'd by April 12th, \$15.50 at site. Prizes: (Based on 35) \$150-100-75; Classes A, B each \$50. Trophy to 1st.
Reserve Section: EF: \$13 if rec'd by 4/12; \$14 at site. Trophy to 1st Prizes: (Based on 35) \$125-80-50; D, E, Unr. each \$40

4TH ATLANTA STEAK AND BOOKS APR 22 Ga.
3-SS, in 6 man sections, 45/90, Bonanza Sirloin Pit, 2915 Clairmont Road, N.E., Atlanta, Ga. 30333. EF: \$7.95 if rec'd by April 12th; \$9.50 at site. Prizes: \$20 in books each section; FREE steak dinner to everyone. REG: Ends at 9:45 AM. RDS: 10-1:30-5. GCA Mem req'd (Others OK) Enter: ICI, 3055 General Lee Road, Macon, Ga. 31204. LS

APRIL QUAD. APR 28 Ga.
Details same as March Quad. except entry fee must be in by 4/21 for discount.



PSCF QUADS APR 7 Pa.
Awbury Rec. Center, Ardleigh & Haines Sts. (behind Martin Luther King H.S.) Phila. Pa. EF: \$5 to PSCF Mems, \$7 to Others. TL: 40/1, 30/30. REG: 8:30-9:30 AM, Round 1 at 9:45 AM. Prizes: \$8, \$7. TD and contact: Ira Lee Riddle.

4TH ANNUAL ICI CLASSIC-\$1200 GPF APR 7-8 Ga.
Save Inn-Midtown, 1152 Spring St. NW., Just East of the 14th St. Exit off I-85 & I-75, phone 404-875-3511, HR: \$18-22 must mention CHESS. 5-SS, 45/2, GCA Mem req. (Others OK), NS, Enter: ICI, 3055 General Lee Rd., Macon, Ga. 31204. REG: Ends at 9:30 AM. RDS: 10-3-8; 10-3. EF: \$18 if rec'd by 3/31, \$20 at site. In two sections:
Open Section: Prizes: \$ 200-100-50; Class A, B, & C each \$100.
Trophies: 1st & 2nd and Class A, B, & C Winners.
Reserve Section: Prizes: \$ 150-90-60; Class E \$100, Under 1000 & Unrated \$75 (Unrated only may win unrated prize)
Trophies: 1st & 2nd; Class E, Unr., & below 1000

ALL PRIZES ARE GUARANTEED AT THIS GRAND PRIX TOURNAMENT.

Note: The hotel for this tournament has been changed from the previous listing. This is really a nice little hotel and they have provided TWO meeting rooms for quiet play, BUT I would go ahead and reserve my room early! - Ed.

RAM IV APR 14 NC
Details are the same as RAM III on March 17.

DOGWOOD OPEN APR 14 NC
3-SS. Statesville Rec. Dept., 510 W. Bell St., Statesville. EF: \$5. Prizes per entries. REG: 8-9 AM. RDS: 9:30-12:30-3:30. Enter: Bill Wall, P.O. Box 167, Stoney Point, N.C. 28678. LS.

DOGWOOD OPEN APR 28-29 Ga.
Details same as Atlanta Spring Open Mar. 24, except entry fee must be in by 4/21 for discount.

APRIL TORNADO APR 29 Ga.
Details same as Atlanta Tornado March 25, except entry fee must be in by 4/21 for discount.

11TH ANNUAL NATIONAL HIGH SCHOOL CHAMPIONSHIP MAY 4-6 Pa.
11TH ANNUAL NATIONAL JUNIOR HIGH CHAMPIONSHIP MAY 5-6 Pa.
Contact Bill Goichberg for details

GEORGIA CHAMPIONSHIP MAY 11-13 Ga.
5-SS Camelot Inn, 1706 Clairmont Rd. Decatur, Ga. 30033. Hotel Rate \$16, 20, 24, 28. Rooms held until 4/26, reserve early. GCA Mem req'd (Others OK) (\$5, \$9/2yrs). In two sections:
Open Section: 45/2, EF: \$15, Under 20 \$13, Under 16 \$9. if mailed by Apr. 26. Prizes: (Based on 35, but 1st Guaranteed) \$150-90-60, B-\$40. RDS: 10-3-8, 9-3. Trophy to 1st & Top B.

Amateur Section: 40/90, Open to below 1600. EF: \$11, Under 16 \$7, if mailed by Apr. 26. Prizes: (Based on 45 full entries) \$120-75-45, D-30, E-30, Unr- 25. RDS: 10-2-6, 9-3. Trophies to 1st, D, E, Unr.

Entry fees \$2 more at site.
ROTH:
Georgia Team Championship: Championship trophy will be given to top team of ten members. Scores adjusted so players can count in both sections. Register your club team.
Business Meeting: Friday 5/11 at 7:30 PM. Elections: Sunday 5/13 @ 1:30 PM. Please submit amendments to GCA President.

PSCF SCHOLASTIC TOURNAMENT MAY 19-20 Pa.
Fairmount Park Memorial Hall, Fairmount Park, Philadelphia. In four sections, Trophies to Top 5 in each section, Trophies to top 3 team if at least five teams in section. To win a team trophy all players or the school itself must be PSCF members.

H.S. Section: EF: \$4, 40/60, RDS: 11-3-7-10-2
J.H.S. Section: EF: 3.75, 30/30, RDS: 11-1-4-7-10-2
Elem Section: EF: 3.50, 30/30, RDS: 10-12-2-4-7
Primary Section: EF: 3.50, 30/30, RDS: 10-12-2-4-7

PSCF/ ORRIE'S PERM PALACE JUN 2-3 Pa.
Orrie's Perm Palace, 1520 N. Broad Street, Philadelphia 19121, call 765-9321 or 765-9310 Mr. Paul Starks for information. **Enter:** Ira Lee Riddle, Fox Run Apts. #F24, 365 Newtown Rd., Warminster, Pa. 18974. **EF:** (Adv) PSCF Members \$10, Others \$13, at door \$2 more.
REG: 10-12 noon, **RDS:** 1-6, 10-4; **TL:** 40/90, 30/60 Trophies to Top 4
Top Expert, Top A/B, Top C/D, Top E/UNR. Prizes: \$100-75-50-35-25-15 and class prizes Expert \$25-10, A/B \$25-10, C/D \$25-10, E/UNR. \$25-10, Top upset \$20 and trophy. A GRAND PRIX TOURNAMENT.

JACKSONVILLE CLASSIC JUN 23-24 Fl.
Phillips Mall, 3563 Phillips Hwy. **REG:** 8-9 AM., **EF:** 1600 & above \$30 1599 & below \$25 both \$5 more at the door. FGA Mem req'd (Others OK)
RDS: 9:30-2-6, 10-3:30. In four sections:
Open Section: Prizes: \$450-200-100-50.
Class B Section: Prizes: \$300-150-100-50.
Class C Section: Prizes: \$200-100-50-25.
Class D & Below: Prizes: \$100-75-25-25.
Enter: Harold Carney, 52 West 23rd St., Jacksonville, Fl. 32206, call (904) 354-4705
A GRAND PRIX TOURNAMENT. Special tour for the ladies on Saturday, includes Lunch & dinner, a fashion show, tour of St. Augustine, the play Cross and Sword and transportation. \$30 if received by June 19th, \$35 at the door.

ATTENTION-- TDs & Organizers :

A POINT OF CLARIFICATION: Please, on new or renewals for State Organizations, honor Home States.

If a member plays in a state, other than his own, that state should accept his new or renew membership and forward it to the member's home state, rather than making him join the state organization where he is playing.

This would be reciprocal in all the states covered by The Chessman.

EXAMPLE: A Georgia player, playing in a Florida Tournament (new or renewal) would pay his state dues to the Florida TD, who would forward the money and address of the Georgia player to the Georgia Chess Association.

If any TD wants "membership receipt forms" from Florida, please send to the FGA a request by post card.

Gilbert Cantrell President of FGA.

CHESS LEAGUES

Ga.

The Georgia High School and Elementary Scholastic Chess Leagues will begin play on February 21, but it is still not too late to enter your school. Interested schools should contact Steve Schneider, 1331 North Decatur Rd., Atlanta, Ga. 30306. Phone (404) 378-5977. There will also be several one-day Saturday league tournaments for teams which cannot travel to regular league matches. At press time there were 34 teams in the High School League and 8 teams in the Elementary League most of these in North Georgia.

THE PRESS

This issue is being rushed to the printer because several of our tournament organizers need the magazine to be on time. We have the additional problem this issue that Feb. is a short month. This issue is running about 5 days ahead of the previous issue, which is good progress, but the May/June issue is traditionally very heavy, therefore, for the next issue and until otherwise notified, The Chessman will implement a staggered deadline system thus:

1. Chess Clubs & Crosstables - 1st of the month.
2. Change in officers - 3rd of the month.
3. Long Articles & editorials - 5th of the month.
4. Games & Pictures - 8th of the month.
5. Brief news & Tournament Ad - 14th of the month.
6. Cancellation notices - Anytime.

The idea of this schedule is to speed up delivery and at the same time give tournament organizers the latest possible date to get ads in. Other improvements will speed up the May/June issue.

GRANDMASTER VICTOR KORCHNOI WILL VISIT FT. LAUDERDALE FLORIDA
Victor Korchnoi will visit Arnold Denker in Ft. Lauderdale, Fl. and give a simultaneous exhibition for 50 players on March 22, 1979. Korchnoi and Denker will leave for Lone Pine on March 23.

GEORGIA'S MONEY PLAYER RUBEN SCHRON HAS MOVED TO LONG ISLAND N.Y.

The former Argentine Champion for many years has been Georgia's leading money player. Among his many other wins he won the Atlanta Open both years and seemed to play best when the stakes were high.

The genial master was never able to win the Georgia State Championship even though he was, for years, the highest rated player in Georgia. His knowledge of the game far exceeded that of any other Georgia player and he played best in the slow time controls.

In the early part of 1977 he developed a leg problem which caused his game to fall off, some of the younger players thought he was through. He was determined to prove himself at the first Atlanta Open and did so handsomely finishing a clear first, but losing nine pounds in the process.

We all wish him well in New York, and who knows, perhaps once again we will see him at the top of a crosstable. -- JEM.

THE PIGGLY WIGGLY OPEN

The Piggly Wiggly Open was sponsored by several groups, including the Southern Chess Association, and administered by the Columbus Chess Club. Thad Rogers did an excellent job of directing.

The turnout, forty-four, was only slightly less than expectations, about three players came from out of town for each Columbus player.

The Open Section was strong though not large. The story of the tournament was Tennant Tranchen a class B player from Columbus who commutes to work in West Germany! Tranchen (1650) worked his way through a string of 1900 players in the first four rounds, at the end of which he had 3½ points, but was not considered a threat when he was paired with Ruben Schron, rated almost 600 points higher. Tennant played the Black side of a Benko Gambit, but went a piece down after about 20 moves. People were beginning to laugh, but then Dana Therrell said "Black was winning!" Tennant came over and explained that he would get the piece back in another seven moves, and be left with a winning position, and that is what happened. Tennant Tranchen won the PW Open, and a good time was had by all, save one. -- JEM



"Smashing move Percy!"

CHESS PUZZLE by Berny Hathcock

White plays 1. P-KB3, 2. K-B2 3. K-N3 4. K-R4 and is mated on move four. What did Black play? Editors hint after move three White had a won game, but then blew it with 4. K-R4??

USCF RATING SYSTEM by Mike Decker

The current USCF rating system takes 2 pages to explain in the USCF Yearbook. Many players cannot wade through all the charts and equations in order to figure out their new ratings. I hope the following summary will aid such players. Note: the following applies only to those who have played at least 25 rated games and are rated below 2300.

	A	B	C	D	E
1	16,000	110	11,104	220	7,040
2	15,552	120	10,688	230	6,720
3	15,072	130	10,272	240	6,432
4	14,624	140	9,888	250	6,144
5	14,176	150	9,504	260	5,856
6	13,728	160	9,120	270	5,568
7	13,280	170	8,736	280	5,312
8	12,832	180	8,384	290	5,088
9	12,384	190	8,032	300	4,832
10	11,936	200	7,680	325	4,256
11	11,520	210	7,360	350	3,776

To determine the rating change look down the numbered columns until you have the rating difference, then if the higher rated player won the number in the lettered columns is the gain. If the lower rated player won take the number out of the lettered column and subtract that from 32,000 and that is the gain. On a draw get the number and subtract from 16,000 thus:

Example 1600 plays 1800 difference is 200 factor is 7.36
1600 wins = 32,000 - 7.36 = 24,64 gain for 1600
1600 draw = 16,000 - 7.36 = 8.64 gain for 1600; 1800 wins = 7.36

PSCF CHESS DAY #1

Player	Rtng	1	2	3	TOT
1 Fisher, Mark	1786	W5	W3	W2	3
2 Kinsler, George	1614	W6	D4	L1	1½
3 Abney, Willie	1613	W7	L1	L4	1
4 Daniels, Howard	1608	W8	D2	W3	2½
5 Yaure, Chris	1525	L1	W7	L6	1
6 DeBrady, Christophe	1503	L2	W8	W5	2
7 Templin, Raymond	Unr.	L3	L5	L8	0
8 Marmorstein, Harold	Unr.	L4	L6	W7	1

1 Markovitz, Neil	1500	L5	L4	W8	1
2 Gooding, Carl	1489	W6	D3	W5	2½
3 Green, Ben	1439	W7	D2	D4	2
4 Graham, George	1341	W8	W1	D3	2½
5 Brown, Gregory	1335	W1	W6	L2	2
6 Klein, Lawrence	1327	L2	L5	W7	1
7 Hudson, William	New	L3	L8	L6	0
8 Jackson, Daniel	Unr.	L4	W7	L1	1

1 Krakowski, Casimir	1324	L5	W7	L6	1
2 Sauck, Richard	1283	L6	D8	W7	1½
3 Sardinas, August	1279	W7	W5	W4	3
4 Jiles, Kevin	1278	W8	W6	L3	2
5 Minus, Donald	1276	W1	L3	W8	2
6 Washington, Michael	1274	W2	L4	W1	2
7 Thomas, Michael	Unr.	L3	L1	L2	0
8 Lowry, Keith	Unr.	L4	D2	L5	½

1 Buvel, Joseph	1268	W5	W3	W4	3
2 Bogus, Howard	1264	L6	L4	W7	1
3 Schuch, Bob	1185	W7	L1	L6	1
4 Allen, Michael	1139	W8	W2	L1	2
5 Washington, John	1135	L1	D6	L8	½
6 Carmichael, Anthony	1095	W2	D5	W3	2½
7 Andrews, Gerald	Unr.	L3	L8	L2	0
8 Leftwich, Andre	Unr.	L4	W7	W5	2

1 Sharp, Homer	1039	W5	W3	W2	3
2 Jiles, Timothy	1016	W6	W4	L1	2
3 Green, Alvin	966	W7	L1	W8	2
4 McCullough, Jeffrey	Unr	W8	L2	L7	1
5 Leak, Isaac	New	L1	L7	L6	0
6 Whetstone, Carl	New	L2	L8	W5	1
7 Moore, Alfred	New	L3	W5	W4	2
8 Rios, Arthur	New	L4	W6	L3	1

1 Jiles, Kenneth	1080	W5	D3	W2	2½
2 Moore, Jeffrey	1076	W6	W4	L1	2
3 Jiles, Stephen	1068	W7	D1	W4	2½
4 Mangum, Tim	Unr.	W8	L2	L3	1
5 Bell, Kim	Unr.	L1	L7	W8	1
6 Seawright, Reginald	Unr.	L2	W8	L7	1
7 Simon, Rodney	New	L3	W5	W6	2
8 Phillips, Kyle	New	L4	L6	L5	0

1 Sereni, Vince	906	W5	W4	W2	3
2 Lewis, Daniel	637	W6	W7	L1	2
3 Dwight, Kevin	New	L7	L6	W8	1
4 Anderson, Leslie	Unr	W8	L1	L6	1
5 Carmichael, Tanya	Unr	L1	W8	D7	1½
6 Jones, Wanda	New	L2	W3	W4	2
7 Gravely, Claude	New	W3	L2	D5	1½
8 Eason, Vaughn	New	L4	L5	L3	0

							TOT
1	Rimmer, Todd	1109	L8	W13	L9	W10	2
2	Ost, David	1049	L9	L11	L13	W14	1
3	Ost, Ed	993	W10	L7	W11	W8	3
4	Healy, Mark	896	W11	L8	W12	L13	2
5	Klein, Arnold	868	W12	L9	L10	W6	2
6	Pohl, Neil Ira	694	L13	L12	W14	L5	1
7	Keegan, Tom	Unr	W14	W3	W8	L9	3
8	Fisher, John	New	W1	W4	L7	L3	2
9	Jones, Gary	New	W2	W5	W1	W7	4
10	Paodella, Philip	New	L3	W14	W5	L1	2
11	Santiago, Luis	New	L4	W2	L3	L12	1
12	Opdyke, Troy	New	L5	W6	L4	W11	2
13	Parks, Warren	New	W6	L1	W2	W4	3
14	Andrews, Antoinette	New	L7	L10	L6	L2	0

PSCF- CONCERNED BLACK MEN
Philadelphia Pa.

1 John Washington	1135	W5	W11	W8	W4	4
2 Greg Mitchell	910	W22	W3	W9	W8	4
3 Ira Lee Riddle	1137	W6	L2	W14	W12	3
4 Ed Ost	993	W17	W7	W10	L1	3
5 Mike Washington	Unr	L1	W15	W18	W10	3
6 Rodney Simon	Unr	L3	W20	W11	W9	3
7 Reginald Seawright	New	W18	L4	D16	W17	2½

Player

Player	Rtng	1	2	3	4	TOT
8 Alvin Green	966	W21	W13	L1	L2	2
9 Dave Ost	1049	W19	W12	L2	L6	2
10 Daniel Lewis	642	W14	W17	L4	L5	2
11 Ron Sanders	840	W20	L1	L6	W16	2
12 Gerald Andrews	Unr	W15	L9	W13	L3	2
13 Alfred Moore	New	W16	L8	L12	W21	2
14 Tim Mangum	New	L10	W19	L3	W18	2
15 Jeff McCullom	New	L12	L5	W21	W19	2
16 Defflorio Britt	Unr	L13	W22	D7	L11	1½
17 Kim Bell	New	L4	L10	W20	L7	1
18 Wanda Jones	Unr	L7	W21	L5	L14	1
19 Leslie Anderson	New	L9	L14	W22	L15	1
20 Keith Lowry	New	L11	L6	L17	W22	1
21 Tanya Carmichael	New	L8	L18	L15	L13	0
22 Jeanine Dawson	New	L2	L16	L19	L20	0

OPEN SECTION I

1 Mark Swarczew	1873	W5	L3	W6	2
2 Bryant Height	1817	W6	L4	-	1
3 Barry Barrentine	1762	W7	W1	W4	3
4 George Kinsler	1614	W8	W2	L3	2
5 Willie Abney	1613	L1	W7	W8	2
6 Howard Daniels	1608	L2	W8	L1	1
7 Christophe Debrady	1503	L3	L5	W9	1
8 Carl Gooding	1489	L4	L6	L5	0
9 Eugene Harris	1140	-	-	L7	0

OPEN SECTION II

1 Ben Green	1439	W5	L6	L9	1
2 Barry Yeldell	1409	L6	L8	L10	0
3 Darryl Coleman	1363	W7	D9	D4	2
4 George Graham	1341	L8	W7	D3	1½
5 Donald Minus	1276	L1	W10	D7	1½
6 Howard Bogus	1264	W2	W1	L8	2
7 Jim Thompson	1261	L3	L4	D5	½
8 Vera Abadan	Unr.	W4	W2	W6	3
9 George Banks	1523	W10	D3	W1	2½
10 William Gaines	New	L9	L5	W2	1

OPEN SECTION III

1 Bill Barrentine	1223	W6	W3	L2	2
2 Eugene Harris	1140	W7	W5	W1	3
3 Michael Allen	1139	W8	L1	L9	1
4 Steven Gilson	1125	L9	W8	W10	2
5 Anthony Carmichael	1095	W10	L2	W6	2
6 Jeff Moore	1076	L1	W9	L5	1
7 Homer Sharp	1039	L2	L10	W8	1
8 Andre Leftwich	Unr.	L3	L4	L7	0
9 Larry Pugh	New	W4	L6	W3	2
10 Daniel Jackson	Unr	L5	W7	L4	1

C3 R.R. # 2/78 - 1
February 10, 1979
Southampton, Pa.

1	Feld, Bennett	W2	L4	W5	2		
2	Zachwieja, Steve	L1	L4	L6	0		
3	Lickteig, Joe	W4	L6	W7	2		
4	Ost, Dave	L3	W1	W2	W6	L7	3
5	Ost, Ed	L1	D6	L7	½		
6	Schroeder, Roland	W2	W3	L4	D5	2½	
7	Lubanski, Bob	L3	W4	W5	2		

for the prize fund.

Our treasury is going down rapidly, with expenses for starting up tournaments, mail, etc. This will be the last issue of The Chessman any of you receive unless we have you on our list as a paid up PSCF Member. Right now, not to many of our delegates and alternates are PSCF Members. After this year, only PSCF Members will be named as delegates, etc. (I want to let that go for the first year in order to convince everyone that it will be worthwhile to belong again.)

Hope to see you at some of our tournaments. Write! Play! Submit results and games! Peace!

USCF RATING CONTINUED

II Bonus points

If you discover that you are to gain more than 32 rating points in a 2,3, or 4 round event, then every point over 32 is doubled for you e.g. If you were due to gain 40 points (32 plus 2x8 equals 48). The limits for bonus points in larger events are: 5 RDS - 35, 6 RDS - 38, 7 RDS - 41, 8 RDS - 44, 9 RDS - 47, 10 RDS - 50, 11 RDS - 52, 12 RDS - 54.

III Feedback Points

You will seldom be able to calculate if you will receive feedback points. You receive them whenever one of your opponents gains bonus points for the tournament in which you played him or her. You gain the number of your opponents bonus points divided by (1.25 times the number of rounds in the tournament).

CHESS IN PENNSYLVANIA

by Ira Lee Riddle

As you are reading this, a lot has been happening in the Eastern part of the state. PSCF has sponsored a few tournaments so far, one in Philadelphia and one in Westminster. For those who have been to one of my tournaments in the "Barn", try to imagine 70 people crammed into a room designed for 40-45, all playing chess. It went fairly well, and the crosstables are on this page. We gained a few PSCF members through it. Any more tournaments run here will be with a differential entry fee for PSCF members. After two or more tournaments, it will be cheaper to be a PSCF member than not. PSCF also combined with Concerned Black Men, Inc., for a 51-player tournament at the Philadelphia College of the Bible on Jan. 21st, crosstables on this page.

If you are in Philly, we will be having a PSCF tournament the third Saturday of each month, at least through May, at PCB, 17th and Arch, or perhaps at 18th and Arch streets. In March, it is again a PSCF-CBM tournament, in which CBM subsidizes losses in the sections to build up chess playing strength. In April we will have octagonals, in May the State Scholastic Tournament (At Fairmount Park). Also coming up the first weekend in June is the PSCF Orrie's Perm Palace #1, at Orrie's Perm Palace, across from Progress Plaza on North Broad Street, Philly. Prize fund is \$500. plus trophies. Entry Fee will be \$10 for PSCF members in advance, higher at the door and for non-PSCF members. Four rounds, two on Saturday, two on Sunday.

In case you haven't noticed yet, all these upcoming tournaments and ones I've been talking about are in the Eastern part of the state. PSCF is willing to sponsor tournaments all over, and we'll even send a director or two for expenses and minor TD fees, but we need more information. please send in any crosstables or tournament announcement forms. For those tournaments either requiring PSCF membership or giving a differential to PSCF Members, The Chessman will provide a free ad and give all the publicity we can. This is your state magazine, please use it.

At this date (Feb. 4th), PSCF has about 30 members, and we are slowly building up again. I want to have about 200 active members, at the minimum. We have over 1000 USCF Members in the state (I forget the exact number) (say 2400-JEM), and only 30 or so belong to the state organization?

If there are any items you wish to have discussed either here in The Chessman or at our annual meeting at the State Championships, please contact me as soon as you can. The State Championships will be in Philadelphia this Labor Day, possibly at Fairmount Park. While the park does not have a hotel next door, SEPTA does run busses frequently through there, and we can get the hail free of charge. With this not an expense, we can offer more money

ORLANDO CHESS CLUB BONANZA
July - October 78

Player	Rtng	1	2	3	4	5	TOT
1 Petersen, Mikel G.	1968						10
2 Ryan, Mark R.	2039						9
3 Storch, Lawrence A.	1901						8
4 Parks, Robert L.	1760						7½
5 Gainor, Paul M.	1738						7
6 Kool, Dean C.	1582						6½
7 Concini, John W.	1607						5½
8 Walkinshaw, Kevin	1494/7						5
9 Allin, MD E Roger	1719						3½
10 Williams, Andrew H	1590						2½
11 Payne, James	1695						2
12 Boettcher, Eric T	1229/20						1½
13 Dellova, John P	1679						1
14 Skjersaa, Karl	1421						0
15 Shorr, Mel	1272						0
16 Zell, Roger C.	1397						0

FLORIDA TECH CLASSIC
January 20, 1979

1 Bagley, James L.	2198	W12	W10	W6	W8	D2	4½
2 Ryan, Mark R.	2039	W13	W11	D9	W3	D1	4
3 Clark, William O.	1824	W23	W18	W16	L2	W10	4
4 Koopmans, Bruce A	2033	D14	L20	W28	W21	W11	3½
5 Bellinap, Mark S.	1856	L15	W14	W22	W17	D7	3½
6 Skeels, Jim B.	1785	W28	W24	L1	D13	1F	3½
7 Hallman, Donald A.	1726	W25	W30	L8	W15	D5	3½
8 Solomon, Eric D.	1851	W19	W21	W7	L1	OF	3
9 Ardaman, Miles	1808	W33	W15	D2	D16	OF	3
10 Snow, Mark C.	1695	W29	L1	W24	W19	L3	3
11 Concini, John W.	1653	W34	L2	W29	W18	L4	3
12 Wickersham, Larry	1571	L1	D28	D14	W30	W25	3
13 Walkinshaw, Kevin C.	1562	L2	W25	W27	D6	D17	3
14 Gumienny, Charles M.	1548	D4	L5	D12	W29	W23	3
15 Suggs, Jack G.	1520	W5	L9	W21	L7	W22	3
16 Peeples, Roger E.	1985	W22	W17	L3	D9	OF	2½
17 Teodorson, Egon R.H.	1642	W26	L16	W23	L5	D13	2½
18 Dunlap, Hudnall B.	1618	W27	L3	W30	L11	D19	2½
19 Faust, Edwin M.	1502	L8	W31	W20	L10	D18	2½
20 Morash, John	1810	L24	W4	L19	L25	W28	2
21 Brown, Mark G.	1637	W31	L8	L15	L4	Bye	2
22 Cox, Dennis E.	1533	L16	W34	L5	W26	L15	2
23 Segebrecht, Raymond L.	1463	L3	W26	L17	W31	L14	2
24 Pickern, David	1416	W20	L6	L10	W27	-	2
25 Brown, Merritt	1133	L7	L13	Bye	W20	L12	2
26 Bates, Thomas R.	Unr.	L17	L23	W33	L22	W29	2
27 Sardone, Joseph D.	New	L18	W33	L13	L24	W20	2
28 Duncan, Warren L.	1186	L6	D12	L4	WF	L20	1½
29 Klug, Harry	1055	L10	Bye	L11	L14	L26	1
30 DiNicola, Jr., John M.	1020	Bye	L7	L18	L12	L27	1
31 Gridley, William C.	New	L21	L19	W34	L23	-	1
32 Foust, Michael S.	1518	-	-	-	W33	-	1
33 Pickern, Henry A.	1273	L9	L27	L26	L32	-	0
34 Whiteley, Todd A.	Unr.	L11	L22	L31	OF	-	0

1979 ATLANTA CONGRESS

1 Murthy, P.L.N.	2073	W23	W4	W8	D2	W5	4½
2 Scott, Joseph	1841	W33	W21	W9	D1	D6	4
3 Ruiz, Guillermo	2003	W14	W7	D10	D6	W11	4
4 Vermilya, James	1841	W15	L1	W29	W19	W13	4
5 Hunt, Steven C.	1929	W22	W20	D6	W8	L1	3½
6 Vaughan, Stan	2012	W29	W12	D5	D3	D2	3½
7 Jurjevich, Charles	1764	W27	L3	W16	D14	W17	3½
8 Schultze, Donald	1877	W24	W19	L1	L5	W22	3
9 Sherman, Stan	1966	W25	D16	L2	W18	D14	3
10 Meidinger, Charles	1809	D17	W18	D3	L11	W19	3
11 Jeffers, Brad	1548	L21	W17	W22	W10	L3	3
12 Close, Robby	1739	W28	L6	W23	L13	W24	3
13 Kinsler, Winston K	1445	L18	W27	W30	W12	L4	3
14 Simons, James	1433	L3	W33	W20	D7	D9	3
15 Campfield, Allan	1362	L4	W29	W32	W23	W20	3
16 Cox, Nicholas	1664	W30	D9	L7	L17	W18	2½
17 Sheppard, Dallas	1345	D10	L11	W28	W16	L7	2½
18 Radford, Ronald	Unr.	W13	L10	W25	L9	L16	2
19 Cobb, Jeffrey R	1470	W32	L8	W21	L4	L10	2
20 Mullis, Don	1679	W26	L5	L14	W31	L15	2
21 Ford, Julian B.	Unr.	W11	L2	L19	L25	W33	2
22 Cline, Malcolm A.	1401	L5	W32	L11	W30	L8	2
23 Crimins, James M.	1437	L1	L24	L12	L15	W28	2
24 Mingle, James M.	1388	L8	W23	W27	W29	L12	2
25 Kayma, Tom	1425	L9	D28	L18	W21	D26	2

	<u>Player</u>	Rtng	<u>1</u>	<u>2</u>	<u>3</u>	<u>4</u>	<u>TOT</u>	
26	Castro, Arnold	1208	L20	L31	D33	W32	D25	2
27	Ramsey, Scotty	1340	L7	L13	L24	Bye	W30	2
28	Krieger, Eugene C.	1288	L12	D25	L17	1F	L23	1½
29	Bassett, Robert F.	1435	L6	L15	L4	L24	-	1
30	Sealock, Sr. Charles	892	L16	Bye	L13	L22	L27	1
31	Schneider, Jay L.	1413	-	W26	-	L20	-	1
32	Hawthorne, Benjy	Unr.	L19	L22	L15	L26	Bye	1
33	Johnson, David A	1373	L2	L14	D26	LF	L21	½

SCHOLASTIC SECTION

1 Rachels, Stuart	Unr.	W5	W4	W2	W3	Bye	5
2 Gee, Jeff C.	Unr.	W4	W3	L1	Bye	W5	4
3 Eddins, Steve	930	Bye	L2	W5	L1	W4	3
4 Rachels, David	Unr.	L2	L1	Bye	W5	L3	2
5 Kayma, Billy	New	L1	Bye	L3	L4	L2	1

QUAD SECTION A

Player	Rtng	1	2	3	TOT
1 Decker, Michael P.	2120	D4	W3	W2	2½
2 Campbell, Robert	1830	W3	W4	L1	2
3 Watson, Byron M.	1757	L2	L1	WF	1
4 Sherman, Stan	1966	D1	L2	LF	½

QUAD SECTION B

1 Rives, Frank B.	1561	W4	W3	W2	3
2 Krieger, Eugene	1288	By	W5	L1	2
3 McIntosh, John	1599	W5	L1	W4	2
4 Radford, Ronald	Unr.	L1	By	L3	1
5 Helton, Billy G.	Unr.	L3	L2	By	1

TIGER I

January 13, 1979

Fuquay - Varina

1 Allen Cooley	1768	W4	W6	W2	3
2 Marvin Wilson	1703	L5	W3	L1	1
3 Paul Calloway	1658	L6	L2	W4	1
4 Bennie Roberts	1625	L1	W5	L3	1
5 Nathan Hunt	1602	W2	L4	W6	2
6 Ronald Gray	1530	W3	L1	L5	1

1 Michael Dreyer	1493	L5	L8	W7	1
2 David Baldwin	1445	W6	W5	W8	3
3 Donald Wilson	1401	W7	L4	L5	1
4 Philip Jackson	Unr.	D8	W3	L6	1½
5 Mitch Gillespie	1390	W1	L2	W3	2
6 Glenn Evans	1358	L2	W7	W4	2
7 Tom Galloway	1275	L3	L6	L1	0
8 David Antczak	1271	D4	W1	L2	1½

1 Quinton Macon	1257	D5	W6	D3	2
2 James Meadows	1246	L6	D7	W8	1½
3 Tres Prince	1245	W7	W8	D1	2½
4 Nick Dreyer	1244	L8	W5	W6	2
5 Daniel McKeithen	Unr.	D1	L4	W7	1½
6 James Howard	1142	W2	L1	L4	1
7 Louis Cobb	1137	L3	D2	L5	½
8 Jimmy Miller	1006	W4	L3	L2	1

1 Michael Dunnells	Unr.	L5	L4	L6	0
2 Dean Howell	Unr.	W6	L7	L4	1
3 Kenneth Turrentine	Unr.	L7	W6	L8	1
4 John Baysden	Unr.	L8	W1	W2	2
5 John Dingman	Unr.	W1	W8	L7	2
6 Brian Lee	544	L2	L3	W1	1
7 Donald Sprowl	Unr.	W3	W2	W4	3
8 George Ward	Unr.	W4	L5	W3	2

1 Robert Yates	548	W5	W4	L6	2
2 Joel Quinn	Unr.	L6	W3	L4	1
3 Andrew Arrowood	Unr.	W7	L6	L5	1
4 Charles Burke	Unr.	W8	L1	W2	2
5 Clifton Johnson	Unr.	L1	W8	W3	2
6 Antony Magee	Unr.	W2	W3	W1	3
7 William Sult	Unr.	L3	L6	L8	0
8 Doug Wentz	Unr.	L4	L5	W7	1

1 Richard Adams	Unr.	L5	W4	W2	2
2 Marty Spivey	Unr.	L3	W6	L1	1
3 Glen Shelton	Unr.	W2	L5	W7	2
4 Tim Bullock	Unr.	L8	L1	L6	0
5 Randy Josemans	Unr.	W1	W3	D8	2½

TIGER I

(Continued)

Player	Rtng.	1	2	3	
6 Mark Marley	Unr.	L7	L2	W4	1
7 Charles Corbin	971	W6	L8	L3	1
8 William Taylor	Unr	W4	W7	D5	2½

1ST Atlanta Steak & Books

1 James Vermilya	1841	D4	W5	D3	2
2 Ulysses Martin	1778	W6	D3	D4	2
3 O. Al Hamilton	1770	W5	D2	D1	2
4 Douglas King	1709	D1	W6	D2	2
5 Allan Campfield	1362	L3	L1	By	1
6 Jeff Cobb	1470	L2	L4	-	0

1 Warren Dinges	Unr.	W11	W6	W4	3
2 Milus B. Maney	1169	D3	W9	W6	2½
3 David Mosley	Unr.	D2	W11	W8	2½
4 David Campfield	1137	W10	W5	L1	2
5 Bill Carl	New	W7	L4	W9	2
6 G. Gernazian	1338	W8	L1	L2	1
7 Art Brandt	1118	L5	By	-	1
8 Julian Ford	Unr.	L6	W10	L3	1
9 Douglas Williams	N	By	L2	L5	1
10 Charles Sealock	U.	L4	L8	D11	½
11 Earl Ray Turner	N	L1	L3	D10	½

1 Nicholas Cox	1664	W4	W3	L2	2
2 Allan Campfield	1362	-	-	W1	1
3 Art Brandt	1118	-	L1	-	0
4 Doug. Williams	N	L1	-	-	0

Charleston Simo

QUEEN PAWN OPENING

(W) Arthur Bisguier Grandmaster
(B) Ralph Carter Unrated

1 P-Q4 P-Q4, 2 P-QB4 P-QB3, 3 N-QB3 N-KB3
4 P-K3 B-KB4, 5 PxP PxP, 6 Q-N3 Q-Q2, 7
N-KB3 N-QB3, 8 N-K5 Q-B2, 9 B-QN5 P-QR3,
10 Q-R4 B-Q2, 11 NxB QxN, 12 O-O R-B, 13
B-K2 P-K3, 14 P-B4 B-Q3, 15 B-B3 O-O, 16
B-Q2 R-K1, 17 Q-K P-QN4, 18 R-QB1 N-QR4,
19 NxP PxN, 20 BxN RxP, 21 P-KN3 RxR, 22
QxR R-K2, 23 R-B2 N-K5, 24 R-QB2 R-K, 25
R-B6 R-R, 26 B-B7? R-QB! 27 BxN PxR, 28
BxB RxR, 29 B-B5 QxPch! 30 BxQ RxQch, 31
K-B2 R-B7ch, 32 K-K3 P-KB4, 33 B-B3 RxRP,
34 K-Q4 K-B2, 35 K-B5 R-QB7, 36 K-N6 RxR!
37 PxR P-K6, 38 KxP P-K7, 39 KxP P-K8(Q)
White resigned.

PAN AM - The Top Ten

- 1 Yale University - A
- 2 University of Pennsylvania - A
- 3 University of Toronto
- 4 University of Minnesota - A
- 5 Ohio State University - A
- 6 Columbia University
- 7 Arizona State University
- 8 MIT
- 9 Purdue University - A
- 10 University of Cincinnati - A

The South and the Pan Am
by Harold Winston, ICLA Historian

Southern colleges and chessplayers have been prominent at the Pan American Intercollegiate in the 70's. Successful Pan Ams were held in Atlanta 1973 and Louisville 1974 and the University of South Florida won the Intercollegiate in 1976. Roger Peeples of the University of West Florida served as ICLA Bulletin Editor in 1977 and Frank Roemer of the University of Alabama was elected Bulletin Editor for 1979. Mike Decker of Atlanta and Louisville has been serving as ICLA Faculty Advisor since December, 1976 and has been a director at many Pan Ams. Last year two Southern colleges placed in the top ten--Texas was 3rd and North Carolina 9th and 8 Southern schools came to the Pan Am in Chicago to try to capture a top prize. An "adopted Southerner" was a key member of the championship team from Yale, formerly of New Jersey, Michael Rohde, now makes his home in Atlanta. The tournament's only IM scored 7-1 on first board to lead Yale to the title. Southern teams did not fare as well as Rohde did, however.

University of Florida was ranked third with a 2154 average team rating. Their lineup was strong: Russell Garber (2210), National HS Champ, Gregg Small (2208), John Nardandrea (2130) and Steven Schonhaut (2069). Florida began by blanking Rochester 4-0 and followed by three more victories, 2½-1½ vs Illinois, 4-0 against Chicago A, and 2½-1½ against 11th seeded York University of Canada Garber beating master Peter Nurmi on first board. As the first half of the Pan Am ended Florida shared a 4 way tie for the lead. Unfortunately they could only win one of their last 4 matches and finished out of the prize money. In round 5 Florida met the irresistible force of Yale A (score 4-0 favor Yale). Next a struggle with 4th ranked Arizona State left ASU on top 2½-1½ even though Garber beat Rob Rowley. Florida bounced back by edging Illinois Inst of Tech A 2½-1½, but in the finale they lost by the same score to Toronto. Only once in 8 matches had Florida scored less than 1½ points but their narrow defeats by Arizona State & Toronto hurt them. Schonhaut led the team with 5½-2½, Garber was 5-3 while Small and Nardandrea had to settle for even scores.

University of Texas was ranked 14th with an average rating of 1969 led by Doug McClintock. Texas too started off well, picking up 4 points out of 5 to be tied for 4th with 3 rounds to play. Their early victims included Alabama (4-0), Herbert Lehman (3-1) and Penn State A (3-1), their loss was to defending champs Penn. A (4-0). Then the Texans lost their momentum, bowing to Minnesota A (3-1) and only drawing their matches against Cincinnati B and Dartmouth. Texas did share some prize money for 2nd team rated under 2000; their top scorers were McClintock 4½-2½ and Robert Reid 3½-2½.

Two teams came from Arkansas: Fayetteville campus had an average rating of 1820 and Little Rock was a bit lower at 1763. Fayetteville also started strong knocking off Chicago D 3-1 and upsetting University of Cincinnati A (1992) by the same score. In the Cincinnati match Don Marcott (1873) bested Rich Horvitz (2052) and Lee Sroufe (1615) surprised David Squillante (1981). Fayetteville followed by a strong effort in losing to Minnesota A (2007) by a close 1½-2½. Paul Kuroda (2166) beat Peter Thompson (2135), Thompson's only other loss in this tournament was to Rohde while Marcott drew John Greene (2063). After that Fayetteville lost to MIT and Baruch College, recovered by beating Hofstra and CCNY and lost their chance for a prize by a narrow 2½-1½ defeat at the hands of Michigan (1926). Kuroda, however, gave Michigan master Fred Lindsay (2331) his only loss in the tournament. Kuroda and Marcott sparked Fayetteville, each 5½-2½. Little Rock had bad luck winning only 2 matches against Rhode Island College B and Illinois Valley Community College B. Danny Williamson had a fine 6½-1½ mark on board 2 and unrated Mark Ransick made an excellent showing with 5-3 on board 3.

Louisville (1849) and Alabama (1669) had the best records of the other Southern schools. Louisville's successes included beating Wisconsin at Madison A 2½-1½, drawing Chicago A, and also tying UCLA (2044). Louisville lost their last 2 matches to miss a prize. John Dockery led the Kentuckians with 5½-2½ and beat expert Rick Long of UCLA (2078). Mike Thomas scored 4½-3½ for Louisville. Alabama was one of the few Southern teams to have a good second half of the tournament, only losing 1 of their final 5 matches. Their big win was a 3½-½ smash against Navy and they drew their final 2 rounds against Hofstra and Lake County. Elias Antonas held down first board with a strong 5½-2½ result and David Worley scored 3½-1½ as 1st alternate.

Clemson University (1773) and Christian Brothers College located in Memphis, Tennessee, (1492) were the other Southern colleges in the Pan Am. Clemson won 2 out of their first 3 matches, 4-0 vs Chicago State, and 2½-1½ vs Minnesota at Morris then lost 4 in a row before scoring 2-2 vs Christian Brothers. That last round was unusual since Clemson's first board had left so Clemson not only forfeited a board, but had to move all their players up a board. Michael Anderson on board 1 had the best record for Clemson 3½-3½ in games played. Christian Brothers finished with the same point total as Clemson though its players were much lower rated. Their victories came over Chicago C (3-1) and Western Illinois (3½-½). Stephen D Spencer was their high scorer on the prizewinning Univ. of Chicago A team (5½ match points). Felt scored 5-3.

Harold, the immediate past President of the Illinois Chess Association, and I communicate from time to time because of similarities between Chicago and Atlanta, and some other interest we have in common. He asked me to be sure to mention that the Pan Am was sponsored by the University of Chicago and the Illinois Institute of Technology. The University of Pennsylvania A Team finished second in a field of eighty five, board two player Thomas Costigan won the board two prize with an impressive 7½-½ score! University of Pennsylvania B finished 21st with a 5-2 score, Penn. State University sent two teams which finished 28th and 52nd, Haverford College 37th, Bloomsburg State University 59th, Indiana University of Pa. 82nd, and Thiel College 85th.

RAM I

The RAM I was held on January 20th at the University of North Carolina in Chapel Hill, 45 players competed. The section winners were: Section I (2176-1787) Greg Samaa (2176) 2½-½, Section II (1675-1530) William Strutton (1675) 3-0, Section III (1503-1355) John Wooten (1459) 3-0, Section IV (1347-1244) Charles Wheeling (1302) 3-0, Section V (1243-979) Alan Goodman (1242) and Joshua Mann (1239) 2½-½, Section VI (886-Unr) Donald Sprowl (unr) 3-0. Tom Galloway directed, assisted by Danny McKeithen.

THE CHARLESTON REPORT
by Pat Hart

Arthur Bisguier visited Charleston for several days, coming directly from Hilton Head where he was a participant in the "chess vacation" held there. While he was here, Arthur played Stall, Wando, and Baptist Hill High Schools and Trident Technical College, playing many games before the simultaneous at the Charleston Chess Club. Ralph Carter was the only one of thirteen players there to defeat Bisguier.

Jim West is the new chess champion of Baptist College. The championship tournament lasted from November 15 to December 1; a total of 24 players participated. West scored 9-0 and two draws, defeating Doug Ratcliff who finished second in the last round.

Jeff Smeltzer of Greenville returned to active play by sweeping the 7th snowstorm open in Charleston with a 5-0 score. Pat Hart and Paul Tinkler both scored 4-1 to share second place and the class B prizes. James Hyatt matched their score for a share of second and the C prize. Wesley Bryant, with a 2½ score was top D; Ed Price scored 1½ for top E; and James Duchins scored 2½ for top unrated player. Twenty-four players participated in this annual event.

EXPAND YOUR HORIZONS
by Mark Solomon

Atlanta: The Big Money Game

The Orlando Chess Club speed tournaments charge a 25¢ entry fee, and I was shocked when the Manhattan Chess Club in New York required a \$4.00 ante, but nowhere have I ever seen the dollars fly like in Atlanta. The excitement of watching \$50.00 drop on a single speed game is unique to Atlanta. To be found only in Atlanta is "THE HUSTLER", "Dauntless" Don Mullis, who will set up anybody in a speed game with the premier speed whiz, Mark "the Shark" Coles.

For the person that wishes to hold on to his hard earned money and play some top notch tournament chess, Atlanta is the answer. P.L.N. Murthy, Dave Kelly, Randy Kolvick, and Steve Hunt top the field but James Vermilya, Stan Sherman, Joe Scott, John Smith, and James Pressley are not far behind. In addition, Winston Kinsler and Dallas Sheppard are two "C" players that will put a scare into any "A" opponent, and Jay Schneider is a fixture in the USCF Top 50 under 16 list.

The Southeast chess world revolves around Atlanta due to the presence of USCF legal ace Don Schultz. GCA Officers, Steve Schneider, President, Lew Martin, VP, Jared Radin, Sec., Steve Hunt, Treas., Tom Morris, State Champion and Junior Officer, and Bill Noyes, Membership Director, Chessman editor-in-chief Earle Morrison, and a national tournament director, super person and super player Mike Decker.

Tournaments abound in Atlanta, be they ICI or Steve Hunt productions, and there is always good turnouts. However, if you tire of the chess or the crazies, there is always the Flames (hockey), Falcons (football), Hawks (basketball), Braves (goofball), and Underground Atlanta.

Remember DON'T FORGET YOUR MONEY!

Next issue- Orlando: Where Youth is King
And this interesting note at the bottom - JEM.

John Nardandrea's article on the Pan American Intercollegiate Championship will be coming in time for this issue. In the event that it does not, please hold off printing for a few days because it will be there.

No problem Mark, no problem at all, we will be sure to do that-JEM

MOVING? Be sure to send in your new address.

BENKO GAMBIT

Pennsylvania
(W) Mark Gregory 1355
(B) Carl Gooding 1524

1 P-Q4 N-KB3
2 P-QB4 P-B4
3 P-Q5 P-N4
4 PxP P-R3
5 PxB BxP
6 N-QB3 P-Q3
7 B-N5 P-KN3
8 Q-Q2 B-N2
9 0-0-0?? ...

Castling right into
Black's open lines.

9 ... Q-R4
10 K-N1 N-Q2
11 N-B3 0-0
12 P-K4 Nxp!
13 NxB QxRPch!
14 KxQ B-Q6ch
15 K-N3 P-B5ch
16 K-N4 KR-Nmate

SCCA Invitational Champ. FRENCH DEFENSE

Feb. 17, 79
(W) Stan Vaughan 2089
(B) Alison Bert 1905

1 P-K4 P-K3
2 P-Q4 P-Q4
3 N-QB3 B-N5
4 P-QR3 BxNch
5 PxB PxB
6 Q-N4 N-KB3
7 QxP R-N
8 Q-R6 R-N3
9 Q-K3 N-B3?!

Better is P-B4.

10 B-N2 N-K2
11 0-0-0 N-B4?!

Better is N-Q4

12 Q-K B-Q2
13 P-B3 B-B3
14 PxB BxP
15 N-KB3 BxN
16 PxB Q-Q4
17 B-Q3 0-0-0
18 P-QB4!! QxKBP
19 R-B1 Q-R6
20 BxN PxB
21 Q-R5 N-K5!
22 QxRP?? R-QR3!

White Resigns

Notes by the loser.

Continental Chess Assn. SICILIAN DEFENSE

(W) Joel Benjamin Master
(B) Francis (B)

1 P-K4 P-QB4
2 N-QB3 P-K3
3 N-KB3 P-Q4
4 PxB PxB
5 P-Q4 P-B5
6 P-KN3 P-QN3
7 B-N2 B-N2
8 0-0 N-B3
9 N-K5 Q-B1
10 R-K1 B-K2
11 B-N5 QN-Q2
12 B-R3 B-B3
13 QxBN PxB
14 NxBP! KxN
15 Q-R5ch K-B1
16 B-K6 Resigns.

LAWRENCE PFEFFERKORN OPEN

June 1978

FRENCH DEFENSE

(W) Mike Petersen 1919 (B) Joe Bradford 2307

1 P-K4 P-K3 4 P-K5 KN-Q2
2 P-Q4 P-Q4 5 P-KB4 ...
3 N-Q2 N-KB3

Sharper is 5 B-Q3, but I prefer a solid
game with some space advantage.

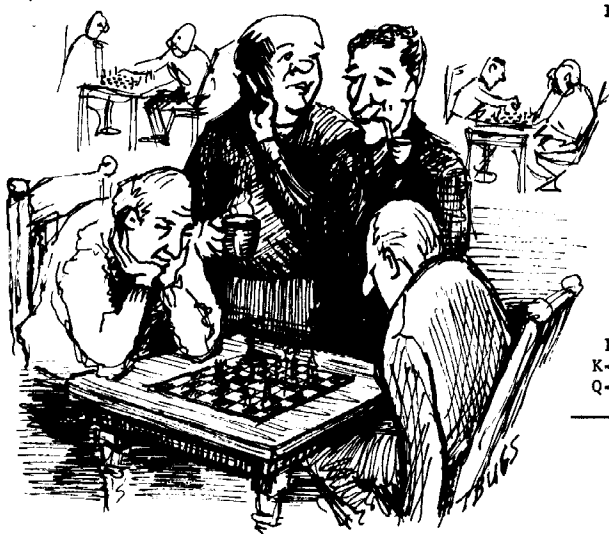
5 ... P-QB4 7 QN-B3! Q-R4
6 P-B3 QN-B3

After the game Joe said 7...Q-R4 was a bad
choice if Black wants to win. If White wants
to win he should try 8 K-B2!! and go for
complications (consult your book!), but if
he is so inclined he can play 8 PxB.

8 PxB

White is going for quiet development.

8 ... QxP 10 N(2)-Q4 N-B4
9 N-K2 Q-N3



11 B-Q3 NxBch 13 0-0 P-QR3
12 QxN B-Q2

After the game Joe said 13...P-QR3 wasn't
necessary. I thought it was OK.

14 B-K3! Q-B2

The question is can Black play 14...QxP?
Who knows?

15 QR-B1 R-B1 17 N-N3 B-K2
16 KR-K1 P-KN3! 18 P-QR3! P-QN4!

Black, has effectively, stopped all center
and Q-side breaks. Now White has to come up
with some kind of a plan.

19 N(B)-Q4 0-0 21 B-B5! P-QR4!
20 NxN BxN 22 Q-Q4! P-R5!

Very nice! Black has stopped White from
establishing an outpost at QB5.

23 BxB QxB 26 N-B3 R-B5
24 N-Q2 B-Q2 27 N-Q4 R(1)-QB
25 Q-K3 K-R1 28 Q-Q2 ...

A waiting move. I wanted to see what Black
would do.

28 ... Q-B4 30 R-R1! K-N1
29 R(B)-Q1 Q-N3 Draw

Offered by Black. I accepted even though White
has a solid plus. 30 R-R1 was to prevent a sac
P-N5 to get the QB file. Mike Peterson.

JOIN THE EASTERN CHESS SOCIETY

BENEFITS: You will receive The Chessman six times a year,
and be entitled to special discounts on USCF memberships.

RATES

Adult 1 Yr. SC \$4.00, with USCF \$16.00; Fl., Ga., NC, & Pa.
\$5.00 with USCF \$17.00.

Adult 2 Yr. Ga. \$9.00, SC \$7.00.

Junior 1 Yr. Fl., NC, Pa., SC. \$3.00, with USCF \$9.00.
Ga. \$5.00, with USCF \$11.00.

Junior (no magazine) SC \$1.00, with USCF \$3.00; Ga. \$2.00
with USCF \$4.00.

Junior Non - Participating USCF, SC \$5.00; Ga. \$7.00

Family (1 magazine) Fl. \$7.50; Ga. \$8.00

Spouse (Family with one full member) SC \$2.00

Send memberships to:

Florida: FCA, 4040-67th Ave., N. Pinellas Park, Fl. 33565

Georgia: GCA, 777 Briarcliff Rd., Atlanta, Ga. 30306

North Carolina: NCCA, 411 Morrison, Chapel Hill, NC. 27514

Pennsylvania: PSCF, Fox Run Apts. #F24, 365 Newtown Rd.

Warminster, Pa. 18974

South Carolina: SCCA, 7 Winthrop Dr., Aiken, SC. 29801

Make checks payable to: FCA, GCA, NCCA, PSCF, or SCCA.

SUBSCRIPTION ONLY \$4.00 Send to The Chessman, 2672 Moss Ln.
Marietta, Ga. 30067.

NAME: _____, ADDRESS: _____, CITY: _____, STATE: _____

ZIP CODE (req'd) _____, Phone: _____

If Junior, Birthdate: _____

Indicate new or renewal: _____

Louisiana State Fair 1967

SLAV DEFENSE

Simultaneous Exhibition

(W) Jude Acers (B) Peake

1 P-Q4 P-Q4, 2 P-QB4 P-QB3, 3 PxB PxB,
4 N-QB3 P-K3, 5 N-B3 B-K2, 6 B-B4
N-KB3, 7 P-K3 0-0, 8 B-Q3 N-B3, 9 0-0
B-Q2, 10 R-B1 R-B1, 11 P-QR3 P-QR3, 12
N-QR4 P-QN4, 13 N-B5 BxN, 14 RxB N-K2,
15 B-N5 RxR, 16 BxN R-B2, 17 BxPch KxB,
18 N-N5ch K-R3, 19 Q-N4 PxB, 20 Q-R4ch
K-N3, 21 Q-R7ch KxN, 22 P-B4ch K-N5, 23
Q-R3 Checkmate.

WORLD OPEN Philadelphia 1978 ENGLISH OPENING

(W) Florin Gheorghiu Notes by JEM.
(B) Boris Baczynsky

1 P-QB4 P-QB4 9 PxB PxB
2 N-KB3 N-KB3 10 0-0 BxN
3 N-B3 P-K3 11 PxB 0-0
4 P-Q4 PxB 12 B-N5 P-KR3
5 NxB N-B3 13 BxN QxB
6 P-KN3 B-B4 14 R-B1 B-K3
7 N-N3 B-N5 15 BxP??
8 B-N2 P-Q4

Walking into a ferocious pin.

15 ... QR-Q1 16 P-K4
No better is 16 P-QB4 P-QN4!, but now all the white squares
around the White King are weak, and subject to raids by
Black's minor pieces.

16 ... N-K4 17 K-N2 N-B6!
If 18 QxN?? B-R6ch wins, Black has compensation for the
pawn.

18 P-KR4 B-N5!

Threatening 19 ...NxBch winning.

19 Q-Q3 Q-N3!

Threatening 20 ...NxBch, 21 PxB?? RxB, 22 QxR (PxB QxQ)

B-K3ch!!

20 N-Q2 NxBch 21 K-R2 B-K3

Threatening 22 ...BxB winning a piece.

22 P-QB4 Q-R4

For the Knight there is no escape, White has equalized.

23 PxB QxBch 25 K-R2 Draw

24 K-N2 Q-N4ch

If 25 Q-N3 QxN and Black wins.

I.C.I.

\$1200.00
GUARANTEED PRIZE FUND

**GRAND
PRIX**

**FOURTH
ANNUAL**

I.C.I. CLASSIC

Atlanta, Ga. 5-SS 45/2, April 7&8
Motel Rates: \$18, 22
Must Mention Chess

Save Inn-Midtown, 1152 Spring St.
Exit I-75 & I-85 at 14 St.
Phone 404-875-3511

PRIZES AND TROPHIES

Open Section (open to all)

1ST \$ 200	A,B,C
2ND \$ 100	EACH \$ 100
3RD \$ 50	

Reserve Section (open to under 1400)

1ST \$ 150	CLASS 1000-1199-\$100
2ND \$ 90	CLASS UNDER 1000
3RD \$ 60	AND UNRATED \$ 75

Trophy to top two; First in class each section

Entry Fee: \$18 by March 31
\$20 at site

Registration ends 9:30
Rounds: 10-3-8, 10-3

GCA REQUIRED (OTHER STATES OK)

NO SMOKING

PRE-ENTRY OR INFORMATION

THAD ROGERS, TD
International Chess Imports
3055 General Lee Rd.
Macon, Ga. 31204

You Will Enjoy

This Tournament !!

Join us!!

Bring Your Friends

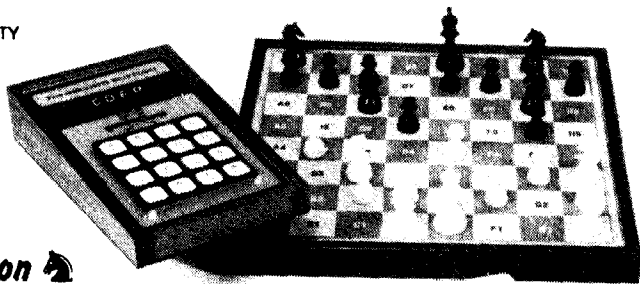


YOU READ BILL DODGEN'S ARTICLE LAST MONTH,
....NOW HERE'S YOUR CHANCE....

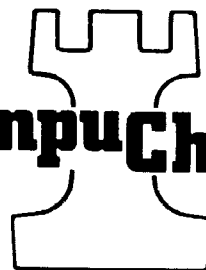


Play Chess (and more*) AGAINST. . . . **CompuChess**

- 90 DAY WARRANTY



Matching Labeled Magnetic
Folding Chess Set ~~\$15.00~~ **\$7.95**



COMPUCHES I

CompuChess I is a microprocessor based chess opponent with six (6) selectable intelligence levels, randomized strategy programmable problem capability, automatic or selectable pawn promotion, castling and en-passant. Levels 1 through 4 are for practical game playing, while Levels 5 and 6 are for programmed problems like Mate-in-Two. The display and keyboard are strongly user-oriented for finding, deleting or adding pieces for handicap chess or alternate chess-like games. ~~\$169.95~~

\$98.87

* Second Edition

The Second Edition is a multiple game Chess opponent capable of six (6) levels of intelligence, randomized strategy, programmable capability, automatic or selectable Pawn promotion, castling and en-passant. Level 6 is designed for problem solving, while Levels 1 through 5 are for practical game playing. The display and keyboard are strongly user-oriented for finding, deleting or adding pieces easily. Keyboard selections permit playing standard Chess, The Game of Knights, Chess with an Amazon Queen and the game of SURVIVAL. These additional features offer new challenges to the Chess enthusiast, plus they can test the masters. ~~\$224.95~~

\$129.87

THOUSANDS SOLD IN DEPT STORES

THIS FACTORY PRICE WILL NOT BE REPEATED!!

ASK FOR DETAILED BROCHURE

ORDER FORM

- Factory direct
- Most shipments are same day

Please send:

- ☐ CompuChess I units _____
- ☐ CompuChess SECOND EDITION units _____
- ☐ Matching Magnetic Folding Chess Set _____
- Shipping \$3.00 each unit _____
- Florida residents add 4% sales tax _____

Name _____ Total _____

Street _____ Mail to: _____

City _____ State _____ CompuChess
P.O. Box 65
Largo, Florida 33540

Zip _____ **VISA & MC**

order by phone 813-585-3850

**THE CHESSMAN
2672 MOSS LN.
MARIETTA, GA. 30067**

**FORWARDING AND
RETURN POSTAGE
GUARANTEED**

**BULK RATE
U.S. POSTAGE
PAID
PERMIT NO. 178
ATLANTA GA.**

LEE HYDER
33 LONGWOOD
AIKEN, S.C. 29801

11/79