

The Chessman

PRICE 75¢

JULY-AUG 1979



Whatever Happened To
Bobby Fischer ?



JULY-AUG. 1979

Volume 2

Number 6

**Editor-in-Chief
J. Earle Morrison**

Associate Editors

**Ar. Bill Wilwers
Fl. Arnold Denker
Ga. Alison Bert
NC Sean O'Brien
Pa. Ira Lee Riddle
SC Lee Hyder**

Correspondents

**Bill Goichberg
Robert M. Snyder**

JOIN THE EASTERN CHESS SOCIETY

BENEFITS: You will receive The Chessman six times a year, and be entitled to special discounts on USCF memberships.

RATES

Adult 1 Yr. SC \$6.00, with USCF \$18.00; Fl, Ga, NC, & Pa. \$5.00 with USCF \$17.00
Adult 2 Yr. Ga. \$9.00
Junior 1 Yr. Fl, NC, Pa, SC. \$3.00 with USCF \$9.00; Ga. \$5.00 with USCF \$11.00
Junior (no magazine) SC \$1.00, with USCF \$3.00; Ga. \$2.00 with USCF \$4.00
Junior Non-Participating USCF, SC \$5.00; Ga. \$7.00
Family (1 magazine) Fl. \$7.50; Ga. \$8.00
Spouse (Family with 1 full member) SC \$2.00
Send memberships to:
Florida: FCA, 4040-67th Ave., N. Pinellas Park, Fl. 33565.
Georgia: GCA, 777 Briarcliff Rd. Atlanta, Ga. 30306.
North Carolina: NCCA, 411 Morrison, Chapel Hill, NC. 27514.
Pennsylvania: PSCF, Fox Run Apts. #F24, 365 Newtown Rd., Warminster Pennsylvania 18974.
South Carolina: SCCA, 7 Winthrop Dr., Aiken, SC. 39801
Make checks payable to: FCA, GCA, NCCA, PSCF, or SCCA.
Subscription Only \$4.00 Send to The Chessman, 2672 Moss Ln., Marietta, Ga. 30067.

NAME: _____
ADDRESS: _____
CITY: _____
STATE: _____
ZIP CODE (REQ'D) _____
If Junior Birthdate _____

Table of Contents

GAMES

Rambling Along by Arnold Denker	3
Four Knights Came by Alison Bert	3
John Peters Simultaneous Exhibition	3
The Exchange Ruy Lopez by Robert M. Snyder	4
Montreal - A USCF Report	4
Atlanta Kings by Mike Decker	5
Robert M. Snyder tries Walter Browne by Robert Snyder	5
Giucoco Piano by Robert M. Snyder	6
New York by Bill Goichberg	7
Charles H. Walter Memorial by David Erb	8
Biorhythms and chess by Mike Bacon	8
The Ruy Lopez - Marshall's Counter Gambit	9
French Defense by Curtis Graham	9
S.C. Chess by Charles Braun	9
Atlanta Kings by Mike Decker	9
Latvian Gambit by Stan Vaughan	9
Walter Browne Simultaneous by Wm. Atkinson	10
Georgia State Championship by Earle Morrison	10
Pirc Defense by Greg Samsa	10
Little Rock Open	11
Mike Fellingner's Chess by Bill Wilwers	12
Arkansas Postal Chess by Bill Wilwers	12
Orrie's Perm Palace - Upsets by Ira Lee Riddle	12
Atlanta Championship- M. Rohde vs C Jurjevich	12
IM John Fedorowicz - A USCF Report	12
South Arkansas Open by Danny Williamson	12

ORGANIZATION

Chess 0.0 by Tom Galloway	13
Cumberland County by Talbot Rogers	13
Letters to the Editor	13
Tournament Site by J. Earle Morrison	14
Why Play Chess by Bill Wall	14
Berkeley Riots win A USCF Report	14
Chess Clubs	15
What's Up in Pennsylvania Chess by Ira Lee Riddle	15
USCF News - USCF Report	15

ARTICLES

Fischer/Spassky - "The Chair Incident" by Don Schultz	16
Officers	16
How To Annoy Your Opponent by Bill Wall	17

TOURNAMENT RESULTS

Crosstables	17
Notices	21
Clearing House Report	21
Tournament Reports	21

WHERE TO PLAY CHESS

Chess Clubs	22
Tournament Announcements	22
Memories of the LPO by Tom Galloway	23

The Chessman is published bimonthly, subscription rates are \$4.00 per year, by the Chessman Company, 2672 Moss Lane, Marietta, Ga. 30067. All rights reserved. Reproduction in whole or in part without written permission is prohibited. Application to mail at Second Class Postal Rates pending at Marietta Ga. 30060. POSTMASTER: Send address changes to The Chessman, 2672 Moss Lane, Marietta, Georgia 30067.

A Letter from the Publisher

BREAK A LEG

by J. Earle Morrison

This issue of The Chessman will be delayed by the fact that your publisher broke his leg in early June which has put a severe crimp on his mobility, but not his spirit.

The material in this issue is the best that has ever come in, it should show up in the end product. The Chessman wants to particularly thank Danny Williamson and Bill Wilwers for the work they have done for us in Arkansas. The Chessman also wants to thank Ed Issa for his contribution. We print his letter, not because we agree, or disagree, with the views expressed therein, but because Ed has brought the problems of Mississippi Chess into focus.

Somehow, the quality in chess magazines and newspapers, has improved over the last few months, and The Chessman would like to congratulate Robert Karch for his May issue of Northwest Chess, just great, Dave Love for his April CinNYS, and his attitude "CinNYS intends to publish more games than any other state publication." Good luck Dave. We were also impressed with Burt Hochberg's June CL&R, a noticeable improvement organizationally and photographically not to mention, paper so slick water won't stand on it. I hope this issue of The Chessman can contribute to that momentum.

Earle Morrison



"BATURINSKY! I WANT YOU TO START FILING COMPLAINTS WITH F.I.D.E."
"BUT, COMRADE CHAIRMAN, HE IS JUST PLAYING A MATCH AGAINST GLIGORIC!"

RAMBLING ALONG

BY ARNOLD DENKER

Got to thinking about Bobby Fischer the other day. It's more than seven years since he last played serious chess. What a terrible waste of the greatest chess talent of this century. Will he ever come back? Which reminds me of a story.

A few years ago Edward Lasker celebrated his ninetieth birthday by spending a very pleasant week with my wife and I in Florida. During the week Bobby called me once or twice on some matters relating to copywriting of chess games. When Edward heard this he knew some people from German Television who had been trying to get in touch with Bobby to arrange a chess match between Bobby and all of Germany on TV. All Bobby would have to do was make one move each week in reply to the consensus of those Germans who wrote in. For this they were willing to pay \$10,000, a sum they had agreed to pay Karpov for the same thing. Some weeks later I received a call from Deutsches Telefunken in Germany and I approached Bobby. He was interested but he felt that they should be willing to pay more. How much more, he didn't say. He left it to me, "See how much they'll pay" he said.

Weeks and weeks went by, long distance calls to Germany, calls to Bobby. Up and up it went "15,000, 20,000, 25,000. Finally after months of haggling the man at the other end of the phone said, \$40,000 and if that isn't satisfactory to your client please lose my telephone number." I spoke to Bobby to give him the good news and he sounded pleased. He suggested that I stop off in Pasadena on my way to Lone Pine and we discuss the arrangements. At the end of March I flew to Los Angeles. Bobby seemed to be in fine spirits, and after the usual small talk I got around to the television contract. "Wasn't it great," I said "that they finally came up to a figure that represented \$1000, a week for only about five minutes work." He hesitated for a moment and then as if we hadn't been over this ground a hundred times or more he said, "Do you think they'll go to a \$1,000,000?"

Since then I have only spoken to Bobby once. On that occasion I recommended that it was important that he play a match with Victor Korchnoi to get himself back into shape. I also put Victor on the phone to make the arrangements to go out and meet with him. But all to no avail.

Here are some interesting games from the recent Montreal event that was won by Karpov and Tal.

QUEEN'S GAMBIT DECLINED

(W) Larsen	(B) Spassky
1 P-QB4 P-K3	10 O-O O-O
2 N-QB3 P-Q4	11 QR-N P-QR4
3 P-Q4 B-K2	12 P-KR3 R-K1
4 PXP PXP	13 P-R3 P-R5
5 B-B4 P-QB3	14 Q-B2 Q-R4
6 P-K3 B-KB4	15 KR-Q B-B1
7 B-Q3 BxB	16 N-K5 R-K2
8 QxB N-B3	17 P-QN4 PXPep
9 N-B3 QN-Q2	18 RXP NxB

Black is in trouble here, the problem is how to prevent White's rook from reaching the seventh rank?

19 PxB N-Q2	25 B-N5 R-R8+
20 RxBP QXP	26 K-R2 R/l-R7
21 R-B7 Q-B4	27 Q-B5 N-K3
22 RXP! PXR	28 B-R4 R-KB8
23 RXP NXR	29 P-B4 R-B8
24 NXP KR-R2	30 Q-N4 R-B5

To prevent 31 P-B5, a big threat.

31 N-B6+ K-R1	33 QxBP 1-0
32 Q-R5 PxB	



Lubojevic
Final Position

SCOTCH GAME

(W) Lubojevic	(B) Karpov
1 P-K4 P-K4	17 R-K1 P-N3
2 N-KB3 N-QB3	18 P-B3 N-B4
3 P-Q4 PXP	19 B-KB2 P-KR4
4 NXP B-B4	20 Q-B2 N/3-K2
5 N-B5 Q-B3	21 B-B3 P-N3
6 N-B3 KN-K2	22 R-K5 N-Q4
7 N-K3 O-O	23 QR-K RKR
8 P-KN3 N-K4	24 RKR N-N2
9 P-B4 N/4-N3	25 P-B4 N-K2
10 B-N2 P-B3	26 Q-R4 P-KN4!
11 O-O P-Q4	27 P-R3 N-K3
12 K-R1 B-N4	28 BXP R-Q1
13 BxB KR-K	29 R-K2 PXP
14 Q-B1 B-B4	30 Q-KB3 K-B1
15 NXP BxB	31 Q-K4 PXP
16 BxB KR-K	32 PXP ...

32 BXP ?? Q-B8mate.

32 ... Q-R3	35 BxB QxB
33 Q-R4 R-Q8+	36 P-B5? ...
34 K-N2 N-N3	

This is a "Cheap-o", White is hoping for 36...PXP? 37 BXP+ NxB 38 Q-R8+ Q-N 39 R-K8+! But this pawn cuts down on the White Bishop if Black doesn't capture.

36 ... P-N4!	39 Q-K3 Q-N8
37 Q-R8+ K-K2	40 Q-R3 R-R4
38 Q-K5 R-Q4	41 QXP+ ...

A tempting morsel, but this takes the White Queen out of play.

41 ... K-B3	46 B-B2 Q-Q6+
42 B-N1 R-B4	47 K-N1 Q-Q8+
43 R-KB2 Q-K5+	48 K-R2 Q-K7
44 K-B1 N-Q5	49 K-N1 N-B6+
45 RXR+ QXR+	50 K-N2 N-Q7

and White resigned, the threat is 51...Q-B8+ winning. The White Queen cannot communicate with the Bishop, because of the pawn on B5.

ENGLISH OPENING

(W) Tal	(B) Kavalek
1 P-QB4 P-K4	8 P-QR3 P-R3
2 N-QB3 N-KB3	9 P-QN4 B-R2
3 N-B3 N-B3	10 B-N2 B-KB4
4 P-KN3 B-B4	11 N-KR4 B-Q2
5 B-N2 P-Q3	12 R-B1 N-K1
6 O-O O-O	13 N-Q5 P-KN4?
7 P-Q3 P-KR3	14 N-KB3 P-B4 ?

Black's last two moves expose the Black King without any offsetting compensation.

15 N-Q2 N-Q5	31 PxB P-B5
16 P-B5 P-B3	32 QNXP NXP
17 N-N6 BxB	33 B-Q6 R-R5
18 PxB QXP	34 R-N2 Q-R1
19 N-B4 Q-R2	35 B-B1 R-R7
20 P-K3 N-K3	36 RXR QXR
21 P-Q4 PXP	37 Q-QB3 PXP
22 PXP P-Q4	38 RXP Q-R2
23 N-K5 N-B3	39 B-Q3 N-K3
24 R-K1 N-N2	40 B-N6 R-R1
25 P-QR4 Q-N3	41 Q-KB3 B-K1
26 B-QR3 KR-K	42 Q-B6 BxB
27 Q-Q3 Q-Q1	43 QxB N-N2
28 R-K2 N-N5	44 P-K6 Q-Q5
29 P-N5 RXP	45 Q-B7 K-R2
30 PXP NxB	46 B-B8 1-0

White's King Pawn will win the game. NOTES on the Montreal games by JEM.

FOUR KNIGHTS GAME (HUNGARIAN DEFENSE)

NOTES by Alison Bert unless otherwise indicated and then by the winner or Mike Decker.

(W) C. Jurjevich (1769)
(B) Don Shultz (1892)

1 P-K4 N-KB3	3 N-KB3 N-QB3
2 N-QB3 P-K4	4 B-B4 B-K2

4...NXP! 5 NxN (5 BXP+ is weaker as it gives Black the better endgame)...P-Q4 6 B-Q3 PxB 7 BXP B-Q3 and Black has fully equalized—some sources even give Black an edge. —MD.

5 P-Q4 P-Q3	6 P-KR3 ...
-------------	-------------

A prophylactic move. — CJ. Avoids the annoying pin...B-N5 and thus maintains central pressure. This move was played by Spassky in Game one of his 1977 Candidates' match with Hort. An alternative is 6 PXP PXP 7 QXQ+ BxQ 8 B-K3 B-N5 9 O-O with a "small edge" according to Kavelek.

6 ... O-O	7 O-O P-QR3?
-----------	--------------

Black has the right idea, but move order must be taken into account. Better is ...NXP immediately, e.g. 8 NxN PxB 9 QXP P-B3! 10 P-QR4 (after 10 B-B4 Black gets good play with ...P-QN4 11 B-K2 (11 B-N3?? P-B4 followed by ...P-B5 wins a piece)...B-K3 12 QR-O P-Q4)...N-Q2! Now Black can prepare his counterplay systematically with ...P-QN3, ...P-QR3, and ...P-QN4. However, as played 7...P-QR3 is an error because a future ...P-QB3 is answered by P-R5, while ...P-QN3 cedes an important outpost on Q5.

8 P-QR4 NXP	10 QXP B-K3?!
9 NxN PxB	

White could now play 11 BxB PxB 12 P-K5 N-Q2 (...PXP 13 QXP and Black cannot defend the KP) 13 PXP PXP 14 P-R5 with a sizeable advantage. Black's central pawns are endangered, and his Q-side is extremely weak, e.g., ...P-QN4 15 R-K1!

11 B-K3 Q-B1	12 N-Q5? ...
--------------	--------------

White should play 12 B-K2 followed by P-B4.

12 ... NxN	13 PxB ...
------------	------------

13 BxB P-QB3 followed by ...P-QN4 gives Black good play.

13 ... B-B3	15 P-QB3 R-K1
14 Q-B4? B-B4	

Threatening R-K5 winning a piece. CJ.

16 B-N3 Q-Q2	
--------------	--

16 ...R-K5!? with threats of sacs on White's KR3 looks promising. —MD.

17 KR-K B-K4	19 B-KN5? ...
--------------	---------------

By trading off his good Bishop, White only helps Black to obtain a superior endgame.

19 ... BxB	21 Q-Q2 Q-B4
20 QxB B-N3	22 P-QB4? P-QR4?
	23 QXP! ...

If...RxB, then RxBmate. If ...RKR+, 24 RKR with the same threat.—CJ.

23 ... Q-Q6	
-------------	--

Correct move played one move late.—CJ.

24 RKR+ RKR	28 QXP Q-N8+
25 R-K1 P-KB3	29 K-R2 QXP
26 RKR+ BXR	30 QXP!! ...
27 Q-R8 K-B1	

Other moves (Q-N8 or P-R5) allow him to recapture the pawn with the threat of a possible perpetual check.—CJ.

30 ... QxB	32 Q-B7+
31 QXP+ K-B2	

32 Q-K6+ draws, but I wanted more. It also has the virtue of protecting two of my passed pawns.—CJ.

32 ... K-N3	35 P-B6 P-R4
33 P-R5 Q-R5	36 Q-N3+! K-B2
34 P-B5 B-N4	37 P-B7 Q-QB5

37...B-Q2 38 Q-Q6 B-B1	39 Q-Q8 Q-Q2
40 P-Q6!	

38 Q-Q6 R-R3	41 Q-K3+ P-N4
39 Q-Q7+ K-N3	42 P-Q6 Q-B3
40 Q-K8+ K-R3	

If he trades Queens now, the Bishop cannot stop the pawns.—CJ.

43 Q-N6 Q-B5	44 P-Q7 P-R5?
--------------	---------------

Time pressure mistake, but it is too late to stop the pawns.—CJ.

45 QXP+ K-R4	46 P-Q8(Q) 1-0
--------------	----------------

SIMULTANEOUS EXHIBITION North Carolina Oct. 1978

PETROFF'S DEFENSE
(W) John Peters
(B) Tres Prince

1 P-K4 P-K4	14 RxB PxB
2 N-KB3 N-KB3	15 Q-B2 P-N5
3 NXP P-Q3	16 BXP+ K-R1
4 N-KB3 NXP	17 N-K5 BxB
5 P-Q4 P-Q4	18 RxB Q-R5
6 B-Q3 B-KB4	19 B-N6 K-N1
7 O-O B-Q3	20 R-R5 Q-K2
8 P-QB4 P-QB3	21 B-R7+ K-R1
9 N-B3 B-K3	22 B-B5+ K-N1
10 P-B5 NxB	23 B-B8 N-Q2
11 PxB B-B2	24 BXP QR-K
12 B-KN5 P-B3	25 BXP? Q-K8+
13 R-K1 O-O	26 Resigns

1 P-K4 P-K4 3 B-N5 P-QR3
2 N-KB3 N-QB3 4 BxN

Known as the exchange variation; White removes the defender of the King pawn and doubles Black's pawns. Black obtains the Bishop pair and has both diagonals ready for his Bishops.

4 QPxB

Here it is best to capture away from the center as it is critical to open the Q file and free the QB.

5 0-0

White's most common move here. Not 5 NxP? Q-Q5! recovers the pawn with a good game. Other moves are:

a.) 5 P-Q4 Pxp 6 Qxp QxQ 7 NxQ B-Q2! 8 B-K3 0-0-0 and now

(1) 9 N-QB3 R-K1 10 0-0-0 B-QN5 11 N/4-K2 P-KB4.

or

(2) 9 N-Q2 P-KN3 (or 9...N-K2 10 0-0-0 R-K1 is good) 10 0-0-0 B-N2 11 N/2-N3 P-N3 12 R-Q2 P-QB4 followed by N-B3.

b.) 5 N-B3 P-B3 6 P-Q4 (6 P-Q3 B-Q3 =) Pxp 7 Qxp (NxP gives Black a small advantage after 7...P-KB4 8 N/4-K2 QxQ+ 9 NxQ B-K3) QxQ 8 NxQ B-Q2 and now (1) 9 B-K3 0-0-0 10 0-0-0 N-K2 or (2) 9 B-B4 0-0-0 10 0-0-0 N-K2.

5 Q-Q3!

Black's best way of defending his King pawn.

6 P-B3

White wants to give support to his Q4 so as to meet Pxp with Pxp giving him a strong pawn center.

6 B-N5! 7 P-KR3

If 7 P-Q4 Pxp 8 Pxp 0-0-0 9 B-K3 P-KB4 10 P-KR3 Pxp =. Or if 7 P-Q4 0-0-0 8 B-K3 P-KB4!

7 BxN 8 QxB 0-0-0!

Black offers his KBP in return for strong pressure.

9 Qxp N-B3

Cutting off a retreat for the Queen as well as threatening NxP.

10 Q-B4?!

White doesn't have time to play so defensively. With 10 P-Q4 he could get some breathing room, but would be forced to give back at least a pawn.

10 P-QN4!

Better than 10...Q-Q6? 11 QxQ RxQ 12 R-K1 B-B4 (Commons-Bisguier) where 13 P-QN4! would have been good. So Black makes his pawns more mobile.

11 Q-K2 Q-Q6

White is tied hand and foot!

12 R-K1 B-B4 14 QxQ RxQ
13 P-QN4 B-N3

The Black pieces are ideally placed.

15 N-R3 R-B1

THE EXCHANGE RUY LOPEZ

by Robert M. Snyder

Preparing to attack the weak point at White's KB2.

16 N-B2 N-R4 17 N-K3

Not 17 R-K2 or R-B1 as 17...N-N6 is crushing.

17 N-B5 18 P-QR4

An attempt at counterplay on the Q-side and allowing a future defense with R-R2.

18 ... K-N2 19 P-B4?

Yes this opens things up but only to Black's favor. 19 R-R2 was better.

19 PxBP

Or else 20 P-B5.

20 R-R2

Byrne and Mednis give the following analysis: 20 NxP NxNP 21 KxN RxP+ 22 K-N1 R-N6+ 23 K-R1 RxP+ 24 K-N1 R-N6+ 25 K-R1 R-B5 26 K-R2 B-B7 and mate to follow.

20 R-Q5!

Protecting the BP, attacking the KP and allowing a possible ...N-Q6 etc

21 B-R3 R/1-Q1

If 21...RxKP 22 R-B2.

22 N-B1 R-Q6

With the Knight gone the BP isn't under attack so Black ties down White's Rook and prepares for a possible ...P-B6.

23 B-N2 RxQP!

Black can afford an exchange sac as long as he penetrates.

24 NxR RxN

Black has so many threats you would think you could only be dreaming!

25 R/1-R1

Taking the sting out of ...Bxp+.

25 P-B6 26 B-R3

If 26 Bxp? N-K7+

26 P-B7 28 P-B3 R-Q8

27 K-R2 N-Q6 29 Resigns

White has no way to meet 29...B-Q5.

T. Sloan vs Robert Snyder
Chicago 1973

1 P-K4 P-K4 4 BxN QPxB
2 N-KB3 N-QB3 5 0-0 B-KN5
3 B-N5 P-QR3

An interesting variation though 5...Q-Q3 is probably better. The drawback of the text is that Black ends up exchanging one of his Bishops in most of the variations.

6 P-KR3

Forcing Black to show his hand by exchanging or protecting!

6 P-KR4

Yes Black defends his Bishop offering a sacrifice White dare not accept. White gets an advantage after 6...BxN 7 QxB now:

a.) 7...Q-B3 8 Q-N3 0-0-0 9 P-Q3 N-K2 10 N-B3 Q-K3 11 P-B4 Pxp 12 Bxp R-Q2 13 Q-B2 K-N1 14 N-R4.
b.) 7...Q-Q2 8 P-Q3 0-0-0 (8...P-B3 9 Q-R5+ P-N3 10 Q-K2 White stands better.) 9 B-Q2! P-B3 10 P-QN4 P-KN4 11 P-QR4 P-KR4 12 Q-K3 K-N1 13 N-R3, White stands better.

White also stands better after a Bishop retreat, i.e. 6...B-R4 7 P-KN4 B-N3 8 NxP Q-R5 9 Q-B3 P-B3 10 NxB Pxp 11 K-N2 0-0-0 12 P-Q3 B-Q3 13 R-R1 N-K2 14 N-B3 P-KN4 15 N-K2.

7 P-Q3

Most authorities consider this best. Not 7 PxB? Pxp 8 NxP Q-R5. If 7 P-B3 B-QB4! or 7...Q-Q3.

7 Q-B3 8 QN-Q2

There are other alternatives. a.) 8 PxB Pxp 9 N-N5 Q-R3 10 N-KR3 Q-R5 and Black is better. b.) R-K1 B-Q3. c.) 8 B-K3 BxN 9 QxB QxQ 10 PxQ B-Q. 11 N-Q2 N-K2 12 K-N2 P-KB4=.

8 N-K2 9 N-B4

Most common here is 9 R-K1 and probably best is 9...BxN 10 NxP P-B4 11 B-K3 N-B3 if 10 QxB P-B4. If 9...N-N3 10 P-Q4 B-Q3 11 PxB RpxP 12 N-R2 RxN 13 Qxp Q-R5 (13...R-R5 14 Q-B5 N-K2 15 QxQ Pxp 16 P-QB3 and White stands better.) 14 QxQ RxQ 15 N-B3 with a small advantage for White.

9 ... BxN 11 PxB N-N3
10 QxB QxQ 12 K-R2?!

Better are 12 B-K3 or R-Q1.

12 ... P-B3 13 N-K3 N-R5

Black now sets up a restrictive bind on the K-side.

14 K-N3 P-KN4 16 B-K3?
15 N-N2 N-N3

Better is 16 B-Q2 which allows White to play N-K3 in the future.

16 ... K-B2 18 B-Q2
17 QR-Q1 B-K2

18 P-Q4 Pxp followed by ...B-Q3+ is good for Black.

18 QR-KN1

Black's pieces are ideally mobilized for a break on the K-side.

19 K-R2 P-N5! 20 P-KB4

20 N-K1 N-R5!

20 PxBP 21 P-KB3

If 21 NxP B-Q3 or 21 Bxp NxB 22 NxN B-Q3.

21 N-K4! 22 N-R4!

White must defend his KBP.

22 ... B-Q3 24 N-B5 P-N6
23 K-R1 N-N3 25 K-N2 ...

To prevent any possibility of P-N7+

25 ... P-B4!

Montreal

Preventing P-Q4.

26 B-R5?

Hoping for 26...R-Q1? 27 NxB!, but the move isn't positionally justified.

26 N-K2

An exchange would favor Black.

27 N-R4 R-Q1 29 B-B1 R-Q2
28 B-Q2 B-K4 30 P-N3

To prevent the eventual Black break with P-QB4, but a weakening move.

30 ... R/1-Q 32 KR-K1 K-N2
31 B-R3 P-N3

With the plan of KR3-N4.

33 K-B1 K-R3 35 P-R4+
34 N-N2 K-N4

Now White's Knight is useless, his Bishop poorly placed and his Rooks boxed up.

35 ... K-R3 36 K-K2?

Better was B-B1.

36 ... N-B3!

The crusher!

37 R-KB1 N-Q5+ 39 B-B1 B-B6+
38 K-Q2 N-N4! 40 Resigns

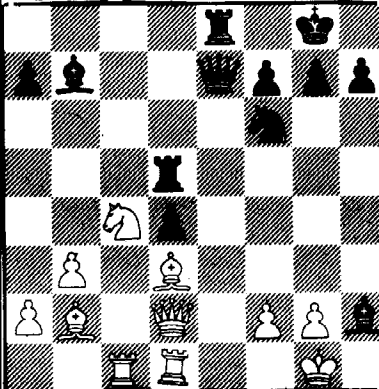
If 40 K-K2 N-Q5mate.

KARPOV & TAL TIE AT MONTREAL

World Chess Champion Anatoly Karpov and former champion Mikhail Tal tied for first place in the spectacular Chess Challenge Cup in Montreal. The two Russian Grandmasters each scored 12 points of a possible 18 to lead the strongest field in recent times, possibly ever. Karpov and Tal each won \$21,500 for their performances. Tal won a share of the brilliancy prize with the following win over Spassky according to a USCF report.

QUEEN'S INDIAN DEFENSE
(W) Spassky (B) Tal

1 P-Q4 N-KB3 2 P-QB4 P-K3 3 N-KB3
P-QN3 4 P-K3 B-N2 5 B-Q3 P-Q4 6
P-QN3 B-Q3 7 0-0 0-0 8 B-N2 QN-Q2
9 QN-Q2 Q-K2 10 QR-B QR-Q 11 Q-B2
P-B4 12 BpxP KpxP 13 Pxp Pxp 14
Q-B3 KR-K 15 KR-Q P-Q5 16 Pxp Pxp
17 Q-R4 N-K4 18 NxN BxN 19 N-B4
R-Q4 20 Q-Q2 BxPch

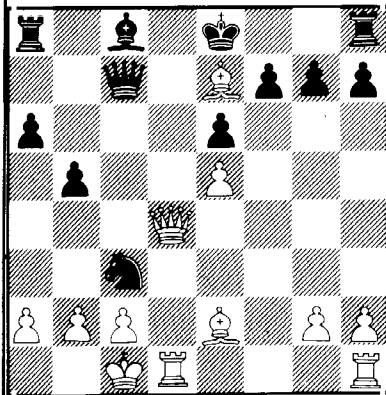


21 KxB R-R4ch 22 K-N N-N5 and White resigned. The Black Queen will invade on the KR file.

MONTREAL - continued
SICILIAN DEFENSE
RAUZER'S ATTACK

(W) Tal (B) Larsen
 Notes by JEM.

1 P-K4	P-QB4	8 O-O-O	P-QR3
2 N-KB3	N-QB3	9 P-B4	Q-B2
3 P-Q4	PxP	10 B-K2	NxN
4 NxP	N-B3	11 QxN	P-N4
5 N-QB3	P-Q3	12 P-K5	PxP
6 B-KN5	P-K3	13 PxP	N-Q4
7 Q-Q2	R-K2	14 BxB	NxN



But not 14...NxB 15 NxP PxN 16 BxP+ and Black must give back a piece to stop mate 16...B-Q2 17 BxB+ K-B1.

15 B-B3 NxR 16 B-Q6 ...

How will Black get his King out of the center?

16 ...	Q-B5	20 Q-N7+	K-Q1
17 Q-N6	N-B7	21 QxR+	Q-B1
18 B-B6+	B-Q2	22 Q-N7	Resigns
19 BxB+	KxB		

White threatens to pick up the Knight and mate. Black is surely lost.

TARRASCH DEFENSE

(W) Karpov (B) Spassky

1 P-Q4	N-KR3	6 P-K3	P-B4
2 P-QB4	P-K3	7 QPxP	N-B3
3 N-KB3	P-Q4	8 Q-B2	Q-R4
4 N-B3	B-K2	9 P-QR3	BxP
5 B-B4	O-O	10 R-Q1	...

Threatening 11 P-QN4.

10 ...	B-K2	13 O-O	Q-Q1
11 N-Q2	B-Q2	14 PxP	PxP
12 B-K2	KR-B1		

The point of White's attack from here on will be to win Black's isolated Queen pawn.

15 N-KB3	P-KR3	28 Q-R5	P-R3
16 N-K5	B-K3	29 P-R3	Q-B3
17 NxN	RxN	30 K-R2	Q-N4
18 B-B3	Q-N3	31 P-B4	P-B3
19 B-K5	N-K5	32 Q-Q1	Q-B3
20 Q-K2	NxN	33 P-KN4	P-KN4
21 BxN	R-Q1	34 K-R1	P-QR4
22 R-Q3	R/3-Q3	35 P-B5	B-B2
23 R/1-Q	R/3-Q2	36 P-K4	K-N2
24 R/1-Q2	Q-N4	37 PxP	Q-B2
25 Q-Q1	P-QN3	38 R-K2	P-N4
26 P-KN3	B-KB1	39 RxB1	RxR
27 B-N2	B-K2	40 P-Q6	...

And it would appear Black must lose a piece to the pawn fork, but--

40 ... Q-B5

Is this the move White did not see?

41 P-N3 Resigns

ATLANTA KINGS
VIENNA GAMBIT
 Dec. 15, 78

(W) Steve Stoyko (2258)
 (B) Mike Decker (2120)

Notes by Mike Decker

1 P-K4	N-KB3	3 B-B4	N-B3
2 N-QB3	P-K4	4 P-B4	...

An odd hybrid system. It is either a normal Vienna Gambit with White's B-B4 and Black's thrown in or a normal Vienna Game with White's P-KB4 and Black's N-QB3 added. I was tempted (correctly, it turned out later when I consulted the books) to try to transpose into the "Frankenstein-Dracula Variation" with 4...NxP, but was afraid of some prepared line. My rather unexciting response was an attempt to get the game out of any possible book.

4 ... B-N5 5 N-B3 ...

5 N-Q5!? may be a reversed Rubinstein Gambit.

5 ...	P-Q3	7 P-KR3	RxKN
6 P-Q3	B-N5	8 QxB	N-Q5

A reversed Canal Variation of the Four Knights Game--not exactly a breath-taking accomplishment, but good for easy equality.

9 Q-B2	P-QN4!	11 B-K3!	...
10 B-N3	P-QR4		

The only move to preserve equality. 11 P-QR3 NxN 12 PxN B-B4 is very good for Black.

11 ... P-R5 12 B-Q5 NxR

12...P-B3 drops a pawn after 13 BxN

13 PxN O-O 14 PxP! ...

14 BxN?? is busted by 14...PxP winning White's Knight since 15 QxP? allows B-B4 16 Q-K4 R-K1 winning the Queen.

14 ... PxP 15 O-O P-R6!

Besides maintaining the initiative, this pawn thrust is also the only move which doesn't lose a pawn and the game.

16 BxN	PxB	18 QR-N1	R-N1
17 NxP	PxP		

18 ...RxP 19 QxP and White will win a pawn.

19 P-QR4 QxP 20 RxP ...

20 Oxp?? B-B4 or NxBP Q-QR4 or NxQP B-B4

20 ... P-QB4

White was in some time pressure (1 minute for 20 moves while Black had 18 minutes left), but time pressure is not the same in telephone chess since each side has about a minute extra per move due to the transmission delays. I saw no way of exploiting my apparent edge because of the immobility of my Bishop and the pressure on the KB-file, and so offered a draw which White declined.

21 QR-N1 P-B4

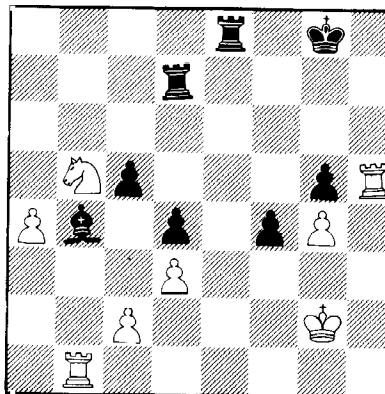
With ideas of transferring my Rooks to KN3 and KR3.

22 Q-B4	R-N3
23 N-B7	Q-Q3
24 QxQ	RxQ
25 N-N5	R-Q2

If 25...R-K3? 26 NxP

26 P-N4	P-B5	29 PxP	PxP
27 K-N2	P-N4	30 R-KR1	R-K1
28 P-KR4	P-R3	31 R-R5	...

Now White offered a draw. It certainly looks like Black should win after R-K7+, but Black can never put together enough threats to prevent White from doubling on the KR-file with serious threats of his own. After using most of my remaining 9 minutes I accepted. However! Several days later it hit me that Black does have a crush--a rather cute one involving a pawn sac: 3



FINAL POSITION

31...P-B6+! 32 KxP (Other moves allow the same kind of wholesale invasion without the loss of a pawn) ...R-B2+ 33 K-N2 (K-N3 at best transposes, but gives Black the additional possibility of trapping a Rook with ...B-K8+ & B-R5) 33...R-K7+ 34 K-N1 or R1 B-Q7 (protecting the KNP and setting up a mating net around White's King) Black has the pleasant options of picking off White's pawns, doubling Rooks on the seventh, or playing for a direct mate. White, in fact, can safely resign!

AMERICAN OPEN 1974
SICILIAN DEFENSE
SNYDER VARIATION

(W) Robert M Snyder
 (P) Walter Browne
 Notes by Robert M Snyder

1 P-K4 P-QR4 2 P-QN3 ...

A strong move recommended by both Czerniak and myself. White plans to place strong pressure in the center with the Queen's Bishop.

2 ... N-QB3 3 B-N2 P-K3

Freeing the King Bishop and allowing KN-K2; the move supports a possible P-Q4.

4 N-KB3 KN-K2

Black doesn't like the idea of

4...P-Q4 because after 5 PxP PxP 6 B-N5 White is better due to his lead in development and central pressure. The text move was first introduced by Browne in this game.

5 N-QB3?! ...

Here White could improve with 5 P-Q4 PxP 6 NxP P-QR3!? (6...NxN 7 QxN N-QB3 8 Q-K3) 7 P-QB4! with a Maroczy Bind type position.

5 ... P-QR3

To prepare for a future P-QN4 and a good waiting move to force White to commit himself.

6 P-Q4 PxP 7 NxP NxN?

This allows White's Q to become very active. 7... P-Q3! which was suggested by Larry Evans was played by Browne in our next encounter which continued 8 P-KN3 (B B-K2!?) NxN 9 QxN N-QB3 10 Q-K3 B-K2=.

8 QxN	N-QB3
9 Q-K3	B-K2
10 Q-N3!	

White's Queen now creates serious problems for Black on the Kingside.

10 ... B-B3

If 10...O-O 11 N-Q5 P-B3 12 N-K3 is good for White.

11 O-O-O	O-O
12 P-KB4	P-Q4?!

It is difficult to find a good plan for Black, but this should lose a pawn.

13 P-K5? ...

After the game Dr. Saidy and I analyzed 13 PxP! finding out that this wins a pawn. Browne claimed that if 13 PxP N-N5! is strong in Chess Newsletter. In May 1975 the following analysis I sent in to Larry Evans was published in C&R 14 K-N1! (not 14 PxP NxP+) NxP (If 14... PxP 15 P-QR3 or Q-R4 15 P-QR3 NxQP 16 NxN BxB 17 N-K7+ K-R 18 KxB wins)

SWORD of the PHOENIX

TOTAL GAMING CENTER

FEATURING

- * CHESS
- * BACKGAMMON
- * GO
- * BRIDGE & POKER

* ALL MAJOR LINES OF HISTORICAL BOARD GAMES
 AND ALL YOUR FAVORITE GAMES FROM MONOPOLY TO MAH-JONG.

375 PHARR ROAD, N.E., SUITE 404
 ATLANTA, GEORGIA 30305
 (404) 233-4971

15 NxN PxN (15...BxB? 16 N-B3!) 16 BxB 32 ... K-N1 33 Q-KB2 B-B4! 4 P-B3 Black's advanced KP

QxB 17 RxP. Preventing 34 Q-B7+ and pinning the Knight. With the idea of supporting P-Q4. 12 ... B-B4

13 ... B-R5 14 Q-R3 P-KB4! 4 ... N-B3 A simple move, which defends the KP, and threatens to win White's Knight with P-KR3.

Blocking White's attack by preventing N-K4 or P-B5. 34 K-K1 Q-R4+ 36 K-N1 B-R6 13 R-K1 ...

15 PxPep BxP 17 Q-N3 ... Desperation! Or, 13 Q-K2 is met by 13... B-QN5!

16 B-Q3 P-KN3 37 ... BXP Here 37 ... Q-KB+! 38 Oxo B-K6+ 39 QxB R-B8 Mates! 13 ... B-QN5!

With the possibility of sacrificing at KN6. 38 Q-K2 Q-Q4 40 N-KB3 RxN The main line runs 5 P-Q4 PxP 6 PxP B-N5! 7 N-QB3 NxKP 8 O-O. Attacking the Rook, not giving White time to take the KP, and opening up the Queen.

17 ... B-R5 19 Q-B3! ... 39 P-QN4 B-N4 41 Resigns 14 R-K2 Q-Q4

18 Q-R3 P-K4 After the game Browne told me that he thought he was winning before I played this move. Strongly centralizing the Q, protecting the KP, attacking the KB, maintaining pressure on White's QP, and threatening to win White's Knight!

19 ... P-Q5 20 P-KN3? ... 15 Q-R4 P-QR4!

If 19...P-K5 20 NxP! PxN 21 B-B4+ wins or 19 ... B-K3 Browne mentioned 20 NxP now if 20...BxN 21 B-B4. 1 now threaten to also trap White's KB with P-QB3!

20 P-KN3? ... 1 P-K4 P-K4 3 B-B4 16 P-KB3 PxP 18 P-K5 PxP

White should have played 20 B-B4+ first preventing Black's next move. 2 N-KB3 N-QB3 17 NxBP P-QB3

20 ... B-K3! Less fashionable than the Ruy Lopez, the Giuoco Piano is rarely seen in master level chess these days. Most of the once complicated lines have been rendered ineffective by modern theory. There have been a few attempts to revive the Giuoco Piano through off beat lines.

If 20...PxN? 21 B-B4+ 21 N-K2 ... 3 ... B-B4

21 N-K2 ... White could have tried 21 PxP PxN 22 BxP RxP

21 ... B-K2 23 Q-N2? ... 24 K-N was to be considered.

22 B-K4 R-QB1 One reason why the Giuoco Piano is uncommon is because Black can play the strong Two Knights' Defense as an alternative with 3...N-B3. Here, 3... B-K2, known as the Hungarian Defense, is too passive for my taste.

23 ... N-N5! 24 PxP ... 24 ... NxBP!

24 K-N was to be considered. 25 BxN ...

24 ... NxBP! 25 BxN ...

Evans has suggested 25 K-N which involves an exchange sacrifice after 25...N-K6.

25 ... RxB+ 26 KxR B-B4+ 27 R-Q3 ...

If 27 K-B Q-B2+ wins, or 27 K-Q2 Q-R4+ also wins.

27 ... Q-B2+ 28 K-Q1 ...

Here 28 K-N1 to hide the King was the only try. Browne is now in serious time trouble.

28 ... BxR 29 Q-Q5+ K-R1 30 NxP R-Q1

White's King is hopelessly trapped in the center.

31 Q-N2 B-KN4 32 P-K6 ...

Trying for counter play by opening up the Queen Bishop.

Chess Problems

VOL. 1 No. 3

With Solutions

By Sidney A. Silberman

Composed by the Masters and Tournament players from all parts of the world. Designed for the average player, yet challenging even to the advanced exponent.

Third Edition

Over 50 Problems

AVAILABLE: Previous editions of the Chess Problems Book, each containing over 50 different and original problems.

Order from your local dealer or send \$1.00 plus 35¢ for postage and handling to National News Service, P.O. Box 1737, Largo, Fla. 33540.

\$1.00

Pocket Size
4 X 5½ inches

SPECIAL OFFER!

One or all of 5 Editions (All different problems) may be ordered for \$ 1.00 each plus 35¢ for postage and handling.

If more than one book is ordered, there will be NO CHARGE for postage
Please Allow 10 days for delivery.



P.O. Box 1737, Largo Florida 33540

Chess Problems

With Solutions

Composed by the Masters and Tournament players from all parts of the world. Designed for the average player, yet challenging even to the advanced exponent.

Announcing...

A Chess Book containing over 50 problems is available for \$1.35 post-paid from National News Service, P.O. Box 1737, Largo, Fla. 33540. Include your name, address, zip code and make checks payable to National News Service.

Smart Move



New York by Bill Goehberg

CONTINENTAL OPEN
May 1979 New York
NIMZO-INDIAN DEFENSE
SAEMISCH VARIATION
(W) Slobodan Pavlovic (2364)
(B) Adnan Sendur (2300 est)
NOTES by Pavlovic.
1 P-Q4 N-KB3 4 P-B3 P-B4
2 P-QB4 P-K3 5 P-QR3 BxN+
3 N-QB3 B-N5 6 PxP 0-0?

Better is ...P-Q4 7 BPxP NxP 8 PxP

7 P-K4 P-Q3 10 0-0 P-KR3
8 B-Q3 N-B3 11 P-Q5 N-QR4?
9 N-K2 P-K4

Better is 11...N-K2.

12 R-N1 P-QN3 17 R-B3 R-B2
13 N-N3 B-R3 18 R-KN3 K-B1
14 Q-K2 Q-Q2 19 Q-R5 N-B2
15 N-B5 N-K1 20 PxP QPxP
16 P-B4 P-B3 21 BxP K-K1

If 21...PxP 22 QxP+ mates soon.

22 RxKNP Resigns.

CONTINENTAL OPEN
May 79 New York
CARO-KANN DEFENSE
(W) Ariel Mengarini (2286)
(B) Joel Benjamin (2353)
NOTES by Joel Benjamin, the
tournament winner.

1 P-K4 P-QB3 3 P-K5 B-B4
2 P-Q4 P-Q4 4 P-KN4?! ...

Double edged.

4 ... B-Q2

The Bishop has done its job, causing
White to weaken his Kingside.

5 P-QB3 P-K3 7 N-B3 ...
6 B-K3 P-QB4

If 7 PxP Q-B2.

7 ... N-QB3 8 B-Q3 ...

Possible is 8 PxP Q-B2.

8 ... Q-N3 9 Q-N3 ...

Probably better is 9 Q-B2, but
Black stands well.

9 ... P-B5!

White must open the QR-file, after
which Black will have strong Q-side
play.

10 QxQ PxQ 15 N-N2 P-KR4
11 B-K2 P-QN4 16 P-KR3 PxNP
12 0-0 P-N5 17 RPxP R-KR6
13 N-R4 P-QN4 18 B-Q2 ...
14 P-B4 B-K2

Now White cannot develop his QN.

18 ... PxP

Possible is 18...P-N6, 19 P-R3 P-N5
but Black is more interested in de-
stroying White's center.

19 PxP P-N5 21 QBxP RxB!
20 P-B5 NPxP

A strong positional sac.

22 NxR NxQP 23 N-B4? ...

Better was 23 QR-N1.

23 ... R-R6 25 PxP PxP
24 QR-B N-R3 26 B-Q1 N-B2

27 N-N6 ...

The KP must be defended.

27 ... B-KN4 30 RxB+ KxR
28 R-N1 RxN 31 RxN B-K1
29 R-N8+ B-Q1 32 R-B4 R-Q6

White Resigns as he must lose a
piece.

7TH MARSHALL GRAND PRIX OPEN
June 2-3, 79 New York
Charles Hertan (2140)
Jay Bonin (2333)

1 P-Q4 N-KB3 4 NxP P-K3
2 P-QB4 P-QB4 5 N-QB3 P-Q4
3 N-KB3 PxP 6 B-N5? ...

Better is 6 P-K3.

6 ... P-K4 9 N-Q5 B-K3
7 BxN PxP 10 P-K3
8 N-B2 P-Q5

10 P-K4!?

10 ... BxN 13 PxP Q-R4+
11 PxP QxP 14 Q-Q2 N-N5?
12 PxP N-B3 15 0-0-0; B-R3

15...B-R3 is forced, on 15 ... NxP+?
16 K-N QxQ 17 B-N5+ wins a piece.

16 P-B4 BxP 25 K-N2 R-B4
17 QxB R-QB1 26 B-N3 P-QR4
18 B-B4 0-0 27 R-B1 P-R5
19 B-N3 NxP+ 28 R/lxP RxN+
20 K-N1 N-B6+ 29 BxR RxR
21 PxN RxP 30 RxR KxR
22 Q-R4 QxQ 31 BxKR P-N5
23 BxQ PxP 32 B-K4 K-B3
24 R-Q7 P-QN4 33 P-R4 Resigns

Notes by C. Hertan who won the
tournament.

7TH MARSHALL GRAND PRIX OPEN
June 2-3, 79 New York
ENGLISH OPENING
(W) Leslie Braun (2111)
(B) Mark Ginsburg (2355)
NOTES by Black.

1 P-QB4 N-KB3 6 B-N2 0-0
2 N-QB3 P-K4 7 0-0 QN-Q2
3 N-B3 P-Q3 8 R-N1 R-K1
4 P-Q3 P-KN3 9 P-QN4 P-B3
5 P-KN3 B-N2

Ambitious attempt to establish cen-
tral superiority.

10 N-Q2 N-B1 12 N-N3?! ...
11 P-N5 P-Q4

Passive, better is 12 NPxP NPxP 13
Q-R4 B-Q2 14 Q-R6!?

12 ... BPxP! 14 B-N2 P-QR3
13 PxNP N-K3

Opening the QR file at the right
time, Black is now ready for cen-
tral gains.

15 P-QR4 PxP 17 N-K4 NxN
16 PxP P-Q5 18 BxN N-N4

Threatening 19...B-R6 which allows
White an interesting exchange sac.
Also good is 19...P-B4. Earlier 17
...N-Q4 was safer.

19 B-N2 B-R6! 21 BxN Q-Q4!
20 B-B1 BxB

Preserving the Bishop.

22 R-K1 B-R6 26 N-R5 QxP
23 P-B3 P-K5 27 R-N3 RxR+
24 B-Q2 PxP 28 QxR Q-B4
25 PxP QxNP 29 Q-K4 RxN
30 Resigns

LITTLE ROCK OPEN
May 26, 79
(W) C. Mapili (Unr.)
(B) William Duke (1212)

1 P-K4 P-K4 5 NxP NxN
2 N-KB3 N-QB3 6 QxN B-K2??
3 P-Q4 PxP 7 QxNP B-B3
4 B-QB4 P-Q3 8 Oxpmate

Knoxville Tenn.
Feb 79
SICILIAN DEFENSE
PELIKAN'S VARIATION
(W) Hudson (A) (B) O'Bryant (A)

1 P-K4 P-QB4 5 N-QB3 P-K4
2 N-KB3 N-QB3 6 N/4-N5 P-Q3
3 P-Q4 PxP 7 P-OR4 B-K3
4 NxP N-KB3 8 B-K2?! R-B1



RAM IV
North Carolina April 14, 79
QUEEN'S GAMBIT
(W) George Hendricks (811)
(B) Wesley Baysden (Unr)

1 P-Q4 P-Q4 16 PxN B-N2
2 P-QB4 N-KB3 17 B-N5+ P-QB3?
3 N-QB3 P-KR3 18 BxP+ BxB
4 Q-B2 P-K3 19 QxR+ K-B1
5 P-QR3 QN-Q2 20 Q-Q6+ K-N1
6 P-K4 PxP 21 QxQ+ RxQ
7 N-B3 N-N3 22 N-N3 R-QR1
8 B-B4 B-Q3? 23 K-Q2 K-R2
9 P-K5 N-KR4 24 QR-QB QR-KB
10 B-K3 B-K2 25 R-B7 P-B3
11 N-K4 N-Q4 26 PxP RxP
12 KBxP NxB 27 N-K4 R-R3?
13 PxN B-N2 28 NxP+ K-N1
14 N/BxB PxN 29 R-BBmate
15 P-KN4 P-QN3

In this position 8 N-Q5 has been
recommended.

9 B-K3 P-QR3 16 N-Q5 KNxN
10 N-R3 N-QN5 17 PxN B-B4
11 0-0 B-K2 18 R-B2 B-B3
12 K-R1 0-0 19 R-N1 Q-R4
13 P-B4 PxP 20 B-N4 BxB
14 BxBP Q-B2 21 QxB QxQP
15 B-B3 KR-Q1 22 B-R6! ...

With the threat of 23 RxB.

22 ... O-K3 27 Q-N3 R-N1
23 QxN PxP 28 Q-Q1 Q-KN3
24 R/1-KB B-K4 29 QxP Q-R4
25 QxP KR-KB 30 P-KN4 QR-Q1?
26 P-B3 P-Q4 31 QxR!! Resign

S.C.C.A. STATE INVITATIONAL CHAMP.
Feb. 17, 79
PONZIANI'S OPENING
(W) Stan Vaughan (2089)
(B) Marvin Chappell (2026)
NOTES by Stan Vaughan

1 P-K4 P-K4 4 P-Q4 NxKP
2 N-KB3 N-QB3 5 P-Q5 N-K2??
3 P-B3 N-B3

5...N-N1 is better.

6 NxP N-KB3 22 BxN Q-B3
7 P-QB4 P-Q3 23 BxRP+ K-B1
8 Q-R4+ N-Q2 24 B-K4 P-B4?
9 N-KB3 N-N3 25 PxPep PxP
10 B-K3 B-K2 26 BxP QR-N1
11 B-Q3 0-0 27 B-K4! B-R3
12 Q-B2 B-B3 28 P-QN3 KR-B1
13 N-B3 R-K1 29 B-Q5 K-N1?!
14 0-0-0 QN-B1 30 P-R5 BxP
15 N-K4!! N-K4 31 BxB R-N5??
16 NxP+ QxN 32 BxP+!! KxB
17 NxN! QxN 33 QxR P-R4
18 B-Q4! Q-N4+ 34 Q-Q7+ K-N1
19 K-N1 N-N3 35 Q-K8+ K-R2
20 P-KR4! Q-N5 36 Q-N6+ QxQ
21 P-B3! QxB 37 PxQDbkck 1-0

LITTLE ROCK OPEN
ENGLISH OPENING
(W) C. Davis (1554)
(B) Larry Petroff (1882)

N.C. SCHOLASTIC CHAMPIONSHIPS
GIUOCO PIANO
(W) Ilgen (Unr) (B) Beasley (610)
1 P-K4 P-K4 2 N-KB3 N-QB3 3 B-B4
P-B3? 4 P-B3 N-R4 5 P-Q3 NxB 6
PxN N-R3 7 0-0 B-B4 8 P-N4 B-Q3?
9 P-B5 B-K2 10 BxN PxP 11 N-R4
P-KB4? 12 NxP B-B1? 13 Q-R5mate.

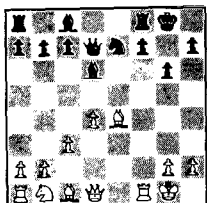
Charles H. Walter Memorial:
A Winner's Games
By David Erb

It may appear from my official rating of 1244 that a dark horse won the race in the novice section. However, because of the USCF computer shutdown, and my excellent performances at the SC Closed Championship, the American College Union Interzonal (held at Knoxville), and the Gamecock Gambit, my pre-tournament rating was actually hovering at an estimated 1330.

My first game was with the director's brother.

Bird's Opening
(W)David Erb
(B)Scott Berry 991

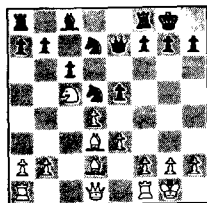
1 P-KB4 P-Q4 2 N-KB3 N-QB3
3 P-K3 P-KN3 4 P-B3 B-N2 5 B-Q3
P-K4 6 PXP NXP 7 N-N B-N 8 O-O
N-K2 9 B-B2 O-O 10 P-Q4 B-Q3?
11 P-K4 PXP 12 BXP Q-Q2?



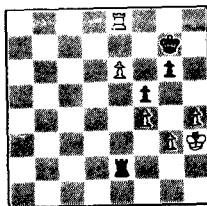
13 Q-B3 R-N1 14 B-B6 N-B4
15 B-N QxB 16 QxQ BxQ 17 BxR
and won on the 47th.

Round 2 Semi-Meran
(W)David Erb
(B)Bill Bland 1292

1 P-Q4 P-Q4 2 P-QB4 N-KB3 3 PXP
NXP 4 N-KB3 P-K3 5 P-K3 B-Q3
6 N-B3 P-QB3 7 N-Q2 (What the...)
7 ...N-Q2 8 N-B4 N/2-N3
(Preferable was 8 ...B-K2)
9 NxB QxN 10 B-Q2 O-O 11 N-K4
Q-B2 12 B-Q3 Q-K2 13 N-B5 P-K4
14 O-O N-Q2



15 N-N BxN 16 PXP QxP 17 Q-B2
N-B3 (Q-R4 might have kept the
pawn but would have chained the
queen to an inactive post)
18 B-B3 Q-N4 19 BxN QxB 20 BxP+
K-R1 21 KR-Q1 B-K3 22 B-K4
P-KN3 23 Q-B3 QxQ 24 PxQ KR-Q1
25 P-QR3 R-Q2 26 RxR BxR
27 R-Q1 R-Q1 28 P-QB4 K-N2
29 P-B5 K-B1 30 P-B3 K-K2
31 K-B2 R-KR1 32 P-B3 R-R4
33 R-QB1 B-K3 34 R-B3 B-Q4
35 BxB RxB 36 P-KR4 (Better
was P-K4) R-Q7+ 37 K-N3 K-K3
38 P-K4 K-K4 39 R-N3 R-Q2
40 R-N4 P-B3 41 P-B4+ K-K3
42 P-R4 (K-N4 should have
been played) P-R4! (Creating
chances for Black on the
queen-side...) 43 R-B4
P-B4 (...at the cost of a
protected passed pawn)
44 P-K5 R-Q6+ 45 K-B2 K-Q5
46 R-B2 R-QN6 47 P-N3
(Correct was R-Q2+) R-N5
48 K-N2 P-QN4 49 PXP
R-NP 50 R-Q2+ K-K3
51 R-Q6+ K-B2 52 R-Q7+
K-B1 53 R-QR7 R-N7+
54 K-R3 P-B4 55 RXP P-B5
56 R-B5 R-N5 57 P-R5 R-R5
58 P-R6 RXP 59 RXP K-N2
60 R-B7+ K-R3 61 R-K7 R-R7
62 P-K6 R-K7 63 R-K8 K-N2

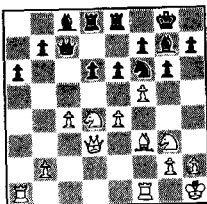


At this point Mr. Bland
believes that the advance
is halted, and offers me
a draw!
64 P-R51 PXP 65 P-K71
K-B2 66 R-B8+ KXP 67 RXP
and won on the 83rd.

Round 3 Pirc

A tense game with a 2nd-
place winner.
(W)Wesley Bryant 1256
(B)David Erb

1 P-K4 P-Q3 2 P-Q4 N-KB3
3 N-QB3 P-KN3 4 P-B4
B-N2 5 N-B3 P-B4 6 B-K2
PXP 7 NXP N-B3 8 B-K3
B-Q2 (Preferring to play
the position as the Pirc
instead of the Dragon)
9 O-O P-QR3 10 B-B3 Q-B2
11 N/3-K2 O-O 12 N-KN3
QR-B1 13 P-B3 P-K3
14 P-QR4 KR-Q1 15 P-R5?
NXP (Whoops!) 16 K-R1 N-B5
17 Q-K2 NxB 18 QxN R-K1
19 Q-Q3 QR-Q1 20 P-B4
B-QB1 21 P-KB5 (Impatience



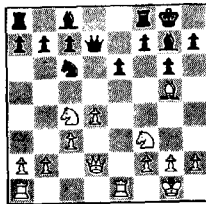
meets the unexpected.) N-Q2
22 PXP PXP 23 QR-K1 (B-K2 would
have put up a better struggle)
N-K4 24 Q-B2 QXP 25 Q-B3 (Why not
R-Q1) QxQ1 26 PXP NxB 27 RxN
BxN and won on the 52nd.

Round 4 Pirc

Because I had already run into
my two main competitors, I had
to be paired with players at
least a point below me.

(W) Don Lemaster 1030
(B) David Erb

1 P-K4 P-Q3 2 N-KB3 N-KB3
3 N-B3 P-KN3 4 B-B4 B-N2 5 P-Q4
O-O 6 B-KN5 NXP 7 N-N P-Q4
8 N/B-Q2 PxB 9 NXP N-B3? (A much
better plan would be P-QB3, N-Q2
-N3-Q4) 10 P-B3 B-B4 11 O-O
B-K3 12 N-K3 B-B1 (Wasted days
and wasted nights...) 13 R-K1
Q-Q2 14 N-B4 P-K3 15 Q-Q2?!

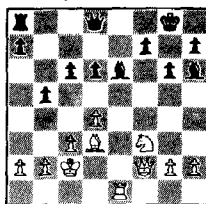


P-QN4 16 N/L-K5 NxN 17 NxN BxN
18 PxB QxQ 19 BxQ P-KB3 (The
point) 20 B-B4 P-QB4 and the
draw was agreed. I've got to
take my hat off to you, Don,
the only one to put a dent
in me!

Round 5 Pirc

(W) Jesse Temples 944
(B) David Erb
Jesse made a strong showing in
this tournament.

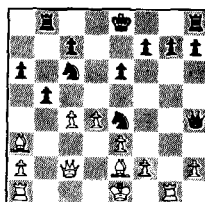
1 P-K4 P-Q3 2 P-Q4 N-KB3
3 N-QB3 P-KN3 4 B-Q2 B-N2
5 N-B3 P-B3 6 B-QB4 O-O 7 Q-K2
Q-N-Q2 8 O-O-O P-QN4 9 B-Q3 N-N3
10 P-K5 (Premature) KN-Q4 11 PXP
(Now this is uncalled for!
White is only opening up too
quickly his cramped position)
PXP 12 NxN NxN (As soon as one
weed is uprooted, another takes
its place) 13 P-B3 R-K1 14 B-K3?
NxB 15 PxN B-R3 16 K-B2 RXP
17 Q-B2 B-K3 18 KxK1 RxR 19 RxR



Q-R4 20 P-QR3 Q-R5+ 21 K-N1
Q-N6 (Threatening mate in 2)
22 N-Q2 Q-R7+ 23 K-B2 BxN
24 KxB (If QxB, then ...R-K1)
QXP+ 25 K-K3 QxRP 26 Q-Q2
QxQch and won on the 45th.

Round 6 Nimzo-Indian
(W)David Erb
(B)Ernest Fulton unr.

1 P-Q4 N-KB3 2 P-QB4 P-K3
3 N-QB3 P-QR3? 4 N-B3 B-N5
5 P-K3 BxN+? 6 PxB P-Q4
(Much better is O-O) 7 B-R3
PXP 8 BxP P-QN4 9 B-Q3 B-N2
10 P-B4 B-K5 11 B-K2 N-B3
12 Q-Q2 R-QN1 13 N-N5 BXP
14 R-KN1 B-K5 15 NxB NxN
16 Q-B2 Q-R5 (Irresistible
temptation!)



17 B-Q3 P-B4 18 BxN PxB
19 PXP N-Q1 20 RXP QXP
21 R-K7+ K-B1 22 RXP+ K-N1
23 RXP RxB 24 QxRP RXP
25 Q-N6+ K-R1 26 B-B8 R-RB+
27 K-Q2 R-N7+ 28 K-B3 R-R2
29 R-R1 resigns

Finally, I thank all the
players for making life
less difficult for everyone,
especially the TD and
champion section winner
Jack Berry. Uh, that is
with the exception of Cliff
Hyatt. Anyhow, Congratulations
to Jack, and to Bill
Floyd and Wesley Bryant,
second-finishers in the
Novice section.

Biorhythms and Chess
by Mike Bacon

Near the end of last year I was turned on by biorhythms by my girlfriend's father. As a result I went back to the Fischer-Spassky match and charted the biorhythms for each player. In the event you know nothing about biorhythms, I will explain briefly. Everyone has biorhythms and they start with birth. There are three cycles; Physical, Emotional, and Intellectual. The physical cycle is twenty three days. The emotional cycle is twenty eight days, and the intellectual cycle is thirty three days. You are either high or low unless you are going through a critical day. Anytime you switch from high to low, or low to high, you are in a critical period. Critical periods are the most important, and critical days comprise about twenty percent of the year.

Fischer, as everyone knows, lost the first game and forfeited the second game. Bobby was in a triple low period during July 11-12-13! Spassky was low (P), but high both (E) & (I). I feel that the emotional and intellectual cycles have much more to do with chess than the physical cycle.

Fischer's first win ever against Spassky came when he was critical (I). But so was Spassky! The difference was that Bobby was going from low to high while Boris was going from high to low! Fischer's chart read (H)-(C)-(H) on July 20, his next win another critical day, and once again he was going from low to high. Spassky's chart read (H)-(L)-(L). Bobby went into a triple high period and won two while drawing one in the next three games, while Boris was in a triple low period!

Spassky wiped Fischer out in game 11, when he was in a triple high period, and Fischer was having a triple low day!

Below is a listing for Fischer and Spassky during the match. The first listing is physical, the second emotional, and the third is intellectual.

	Fischer	Spassky	Game results
1	L-L-L	L-H-H	1-0 Spassky
2	L-L-L	C-H-H	Fischer forfeit
3	L-L-C	H-L-C	0-1 Fischer
4	C-L-H	H-L-L	Draw
5	H-C-H	H-L-L	0-1 Fischer
6	H-H-H	H-L-L	1-0 Fischer
7	H-H-H	L-L-L	Draw
8	H-H-H	L-L-L	1-0 Fischer
9	L-H-C	L-H-L	Draw
10	L-C-L	L-H-H	1-0 Fischer
11	L-L-L	H-H-H	1-0 Spassky
12	L-L-L	H-H-H	Draw
13	C-L-L	H-C-H	0-1 Fischer
14	H-L-L	H-L-H	Draw
15	H-C-C	L-L-H (17th)	Draw
16	H-H-H	L-L-C (18th)	Draw
17	C-H-H	L-L-L	Draw
18	L-H-H	L-C-L	Draw
19	L-H-H	C-H-L	Draw
20	L-H-H	H-H-L	Draw
21	L-L-H	H-H-L	1-0 Fischer

THE RUY LOPEZ - MARSHALL'S COUNTERGAMBIT by J. Earle Morrison
The Piggly Wiggly Open, Columbus Ga. Jan 21, 79 (W) J. Earle Morrison (1714) (B) Jere Roland (1838) 1 P-K4 P-K4 2 N-KB3 N-QB3 3 B-N5 P-QR3 4 B-R4 N-B3 5 O-O P-QN4 6 B-N3 B-K2 7 R-K1 O-O 8 P-B3 P-Q4 9 PXP NXP 10 NXP NxN 11 RxN P-QB3 12 P-Q4 B-Q3 13 R-K1 Q-R5 14 P-KN3 Q-R6 15 B-K3 B-KN5 16 Q-Q3 P-KB4 17 Q-B1 Q-R4 18 P-KB4 K-R1? 19 BxN (Forced, but good.) PxB 20 N-Q2 KR-K1 21 P-QR4 P-N5 22 P-B4 (Now White has the initiative and the extra pawn.) Q-B2 23 P-B5 B-B2 24 N-B3 BxN 25 QxB R-K5 26 B-B2 QR-K1 27 RxR RxB 28 R-K1 Q-K3 29 RxR QxR 30 Q-Q1 P-N6 31 P-Q5 Q-K1 and White's connected passed pawns won on move 37.

The ICI Classic, Atlanta, Ga. April 8, 79 (W) J. Earle Morrison (1714) (B) Bruce Wright (1806) The same first 15 moves as in the game above, 16 Q-Q3 QR-K1 17 N-Q2 R-K3 18 Q-B1 Q-R4 19 P-QR4 PXP 20 RXP P-KB4 21 BxNch PxB (The text is conservative, the Tal line here is 21 P-QB4? P-B5 22 PxB NxB 23 PxB PxB 24 PxB Pch K-R1 25 PXP RxB 26 RxB Q-N5 and White is better) 22 P-KB4 P-KN4 23 R/4-R1! PXP 24 BxP BxB 25 QxB R-R3 26 N-B1 B-B6 27 R-K7 B-K5 28 Q-K5 (Now it is White who has the attack) R-N3? 29 R/1xP! (White's heavy pieces are pouring in, if 29...RxB 30 Q-N7 Mate.) R-N5 30 R/R-R7 Q-R3! (At the time I thought there was no defense.) 31 RXP QxR 32 RxD KxR 33 P-QN4 and White's Q-side pawns won on move 45.

Johnny's

PIZZA & SUBS

NOW OPEN!

REAL NEW YORK STYLE PIZZA BY THE SLICE OR WHOLE

OPEN DAILY-11 AM TIL 12 AM-SUNDAYS-4 TIL 10 PM

1810 CHESHIRE BRIDGE ROAD
(ONE BLOCK FROM PIEDMONT)
874-8304

AIRPORT
1241 VIRGINIA AVENUE
766-3727

\$1.00 OFF ANY SIZE PIZZA WITH THIS COUPON!
HONORED AT EITHER JOHNNY'S PIZZA STORE

RAM #7
November 11, 1978
North Carolina
FRENCH DEFENSE
(W) Robert Burgin (1542)
(B) Curtis Graham (1601)
Notes by Black

1 P-K4 P-K3 5 P-QR3 BxN+
2 P-Q4 P-Q4 6 PxR N-K2
3 N-QB3 B-N5 7 Q-N4 Q-B2
4 P-K5 P-QB4 8 QxNP

The Poison Pawn Variation.

8 R-N1 10 N-K2
9 QxP PxP

White may also play 10 K-Q1, which is Euwe's recommendation.

10 QN-B3 12 Q-Q3 PxP
11 P-KB4 B-Q2 13 NxP ...

Playable, but R-QN1 or N-N3 seem to be better alternatives.

13 N-B4?!

Recommended by Schwarz in Moles "French Defense, Main Line Winawer"

14 P-N4?!

This move does not seem good because of Blacks reply, which is coming up.

14 RxP 15 B-R3 NxP!

Surprise!

16 PxN QxP+ 18 B-Q2 QR-B1
17 K-B2 R-B4 19 QR-K1 Q-B3?

Moles gives (19...Q-Q5+, 20 QxQ NxQ "with tremendous pressure"). My move seems better because it threatens RxN and P-Q5.

20 BxN??

Clearly a blunder

20 RxN 22 QxP??
21 BxR RxR

White had to play 22 QxR, but Black is still winning.

22 B-B3 23 Q-K5 QxQ?

Black should play 23...RXP+, 24 K-N1 QxQ, 25 RxQ R-B8+

24 RxQ BxR

Now, after all the fireworks, Black is a pawn up.

25 BxP??

Don't ask me to explain this one.

25 PxR 27 R-K3? RxP+
26 RxP+ K-Q2 28 Resigns

S.C. CHAMPIONSHIP
November 11, 1978
NIMZO-INDIAN DEFENSE
(W) Lee Hyder (B) Richard Cohen
Notes by Charles Braun

1 P-Q4 N-KR3 3 N-QR3 B-N5
2 P-QR4 P-K3 4 P-K3 P-Q4

4...P-Q4 has been out of favor for 40 years because of 5 P-QR3. Better is 4...P-R4 or 4...O-O, but White transposes into the main line.

5 N-B3 O-O 6 B-Q3 P-B4

7 O-O N-B3 8 P-QR3 PxQP
Black is playing with the move order. If he intends to exchange his Bishop he should do so at once.

9 KPXP PxP 11 PxR Q-B2
10 BxP BxN 12 B-R2

Now White could get an edge with 12 Q-K2 P-QN3 (12...N-QR4 13 B-Q3+) 13 B-Q3 P-KR3 14 P-K4 B-N2 15 B-N2 KR-K 16 KR-K1 Gligorich-Bachtiar, Havana 1966.

12 P-QN3 18 P-B4 P-B5
13 B-N5 N-K5 19 B-Q2 NxR
14 Q-Q3 P-B4 20 RxN QR-KB
15 B-K3 R-B3 21 R-K1 R-N3
16 KR-K1 B-N2 22 P-Q5 PxP
17 QR-B1 N-K2 23 PxP Q-Q3

Black resigned 23...R-Q3 was necessary. Too late Black saw 24 RxN QxR 25 P-Q6 check winning.

S.C. CHAMPIONSHIP
November 11, 1978
ENGLISH-KINGS INDIAN DEFENSE
(W) Richard Spitzer (B) Lee Hyder
Notes by Charles Braun

1 P-QB4 N-KB3 3 P-KN3 P-KN3
2 N-QB3 P-K4

Usual and a bit better for Black is 3...P-Q4.

4 B-N2 B-N2 5 N-B3

White also gets a small edge with 5 P-K4 O-O, 6 KN-K2 P-Q3, 7 O-O QN-Q2, 8 P-Q3 N-B4, 9 P-B4. The game now transposes to the Tchigorin Variation of the Kings Indian.

5 P-Q3 8 P-K4 P-QB3
6 P-Q4 QN-Q2 9 P-KR3 P-QR3
7 O-O O-O

A little better are 9...O-N3 (10 R-N1 Q-N5) and 9...R-K1 (10 B-K3 PxP).

10 B-K3

Alternatives are 10 R-K1, 10 P-Q5, 10 R-N1, and 10 Q-B2.

10 P-QN4 12 P-Q5
11 BPxP RPXP

White can maintain his edge with 12 Q-B2 B-QR3, 13 KR-Q1 Q-K2, 14 P-N3.

12 PxP 19 QR-Q1 QxQ
13 NxP B-N2 20 NxQ N-Q4
14 NxNch NxN 21 B-B5 B-B1
15 N-Q2 P-Q4 22 BxB KxB
16 PxP BxP 23 P-R3 N-N3
17 BxB QxB 24 N-B5?
18 Q-N3 KR-Q1

Better to put a little heat on with 24 R-Q2 or 24 R-B1.

24 N-B5 25 P-N3 N-Q7?

If 25 ...NxP, 26 N-Q7 and 27 NxP.

26 KR-K1 N-B6ch 30 K-K2 R-R7?
27 K-B1 NxR 31 K-K3 R-B7
28 RxN RxP 32 P-B4 R-B6+
29 RxP P-N5 33 K-K4? P-B4
34 Resigns

ATLANTA KINGS
vs
WESTFIELD COLONIALS
December 1978
(W) Tinkerbell (1850 est.)
(B) Tom Waters (1627)

Tinkerbell is a computer
Notes by Mike Decker.

1 P-K4 P-QB4 9 P-KN4 B-N3
2 P-QB3 P-Q4 10 N-KR4 P-QR3
3 P-K5 N-QB3 11 B-R4 Q-B2
4 N-KB3 B-N5 12 NxB NxN
5 B-N5 Q-N3 13 P-Q4 P-N4
6 N-R3 P-K3 14 B-B2 PxP
7 P-KR3 B-R4 15 PxP BxN
8 P-Q3 N-K2 16 PxR

Reaching a position reminiscent of the French Defense, Black's advantage accrues from the weakness of White's pawns on QR3 and Q4 and the series of White weaknesses on the QB file particularly White's QB4. According to Tinkerbell's operator (Peter?) Black's coming combination was all foreseen by the computer.

16 NxQP 18 B-Q2 N-B6+
17 BxN Q-B6+ 19 K-K2 QxB+

Better was NxR which wins a pawn after 20 BxP+ KxB, 21 QxN QxP+.

20 QxQ NxQ 23 QR-QB1 R-B5
21 BxPch KxB 24 RxR NPxR
22 KxN QR-QB1 25 R-QN1 R-QB1

25...P-KR4! was, according to the post mortems, a strong winning try. White's active rook probably compensates for Black's strong pawns.

26 R-N7ch K-B1 31 R-R7ch K-B1
27 R-N6 K-K2 32 R-Q7 P-Q6+
28 RxRP R-B2 33 K-B3 RxP
29 K-B2 P-Q5 34 KxP R-K7
30 P-QR4 R-B4 35 RxQP RxRP

Tinkerbell now starts a rather fruitless sequence of rook manoeuvres instead of activating her King.

36 R-B3+ K-K2 43 R-B3 P-K4
37 K-N3 R-R8 44 P-R5 R-QR8
38 R-QB3 R-KB8 45 R-B6ch K-N4
39 R-B7ch K-B3 46 R-B5 K-R5
40 R-B8 K-K2 47 RxP KxP
41 R-B2 R-KR8 48 R-K7?
42 R-B7ch K-B3

Right into a book draw!

48 RxP 50 P-B4 P-R4
49 RxP K-R5 51 K-B3

If 51 P-N5 K-N5=

51 R-R8 53 R-KB7 Draw
52 PxP KxP

Black draws by putting his King in front of the pawn (after 53...K-N3) and his rook on the third rank until the pawn is pushed to the sixth rank whereupon the rook goes to the eighth rank and checks the enemy King from behind until it is forced away from the pawn. Then the rook attacks and wins the pawn. This is the most important end game manoeuvre of all--learn it!

CARO-KANN DEFENSE
(W) Terrance de Peaza (1972)
(B) E. Salomon (2020)

1 P-K4 P-QB3 7 B-Q3 PxP
2 P-Q4 P-Q4 8 BxP P-QR3
3 PxP P-Q4 9 O-O P-QN4
4 P-QB4 P-K3 10 B-Q3 B-N2
5 N-QB3 N-KB3 11 Q-K2 N-B3
6 N-B3 B-K2 12 R-Q1 N-QN5

But not 12...NxP?? 13 NxN QxN?? 14 BxPch winning.

13 B-N1 N/5-Q4? 16 NxN BxN
14 B-Q2 O-O 17 B-N5 R-R2
15 N-K5 Q-N3 18 N-N4 NxN

19 QxN BxB 27 P-KN3 R-B7
20 QxB Q-Q1 28 P-N3 Q-B2
21 Q-R5 P-KN3 29 P-Q5 Q-B4
22 Q-K5 Q-B2 30 Q-Q4 QxQ
23 Q-B6 Q-K2 31 RxQ PxP
24 Q-K5 R-B1 32 PxP R-K1
25 B-K4 BxB 33 R-Q6?
26 QxB R/2-B2

33 P-QR4 holds the draw.

33 ... R/1-K7 39 K-N R/R-N7+
34 RxRP RxBP 40 K-B RxNP
35 R-N6 R-N7+ 41 RxQNP P-R4
36 K-R1 RxP+ 42 R-QB5 P-R5
37 K-N1 R/B-N7+43 R/1-B R/6-N7
38 K-B1 R-B7+ 44 R/1-B3 RxP
White Resigned.

SOUTHERN CONGRESS
March 3-4, 1979
LATVIAN GAMBIT
(W) Don Mullis (1659)
(B) Stan Vaughan (2021)
Notes by the winner

1 P-K4 P-K4 17 BxKP P-B3
2 N-KB3 P-KB4 18 NxP+ NxN
3 B-B4 P-QN4 19 B-Q5 P-R3
4 B-N3 PxP 20 B-R4 B-N2
5 NxKP Q-N4 21 N-Q2 Q-K2
6 P-Q4 QxNP 22 B-N2 QR-Q
7 Q-R5+ P-N3 23 B-B3 P-R4
8 B-B7+ K-Q 24 P-KR3 KR-N
9 BxP? QxR+ 25 B-N3 B-R1
10 K-K2 B-R3? 26 P-R4 N-N5
11 B-B4? P-N5+ 27 P-B3 N-K6+
12 K-Q2 Q-B8 28 PxN RxR
13 B-K3 N-KB3 29 K-B2 RxP
14 Q-Q1 QxQ+ 30 PxP R/KxB
15 KxQ K-K2 White Resigns
16 B-N5 P-Q3

CLARK COUNTY OPEN
Athens, Ga.
March 1979
NIMZO-LARSEN
Notes by Chuck Braun

1 P-QN3 P-K4 4 B-N2 B-K2
2 B-N2 P-Q3 5 P-KR3
3 P-KN3 N-KB3

One too many waiting moves. More consistent is 5 P-K3 O-O 6 N-K2.

5 ... O-O 7 P-Q4 ...
6 P-B4 QN-Q2

Belatedly deciding to occupy the center with pawns.

7 ... R-K1 9 P-K4 ...
8 P-Q5 B-B1

White has a space advantage, but can't do much with it. Queenside attack seems out of order, yet the break with P-KB4 weakens the King Pawn. Perhaps P-K3 followed by N-K2, O-O, and P-B4.

9 ... P-B4 18 R-K1 P-KN3
10 N-Q2 P-QR3 19 N-B1 N-R4
11 P-QR4 P-QR4 20 N-K3 B-N2
12 N-K2 N-N1 21 R-R4 N-KB3
13 N-QB3 N-R3 22 Q-K2 N-Q2
14 N-N5 B-Q2 23 R/1-R P-N3
15 O-O BxN 24 N-B2 QR-R
16 PxR N-N5 25 NxN BxN
17 B-QB3 Q-B2 26 BxNP

White loses patience and goes for the win.

26 ... PxR 33 RxR+ QxR
27 R-R7 Q-Q1 34 QxQ+ KxQ
28 Q-Q2 P-B4: 35 R-R7+ K-N1
29 QxP N-B4 36 PxN RxP
30 PxP PxP 37 B-B1 P-K6!
31 Q-B3 Q-N4 38 B-K2 R/5-B
32 P-N4 P-K5? 39 R-R6 R-R1!

Now if 40 RxP PxP+ 41 KxP R-R7
THE CHESSMAN JULY-AUG 1979

40 R-XR	PxPch	49 K-K3	R-Q8
41 KxP	RxR	50 B-K2	R-K8
42 B-Q3	R-R5	51 K-Q2	R-KN8
43 K-K3	K-N2	52 K-K3	K-K4
44 K-B4	K-B3	53 K-B2	R-QB1
45 P-KN4	PxP	54 K-K3	R-B6ch
46 PxP	P-R3	55 K-B2	K-Q5
47 B-K2	R-R7	56 B-B1	RxP!
48 B-Q3	R-Q7		

Now it is all over.

57 BxR	KxB	62 K-N6	P-Q4
58 K-N3	KxQP	63 K-B6	P-Q5
59 K-R4	K-K4	64 K-K6	P-Q6
60 K-R5	K-B5	65 K-Q6	P-Q7
61 KxP	KxP	66 White Resigns	

SIMULTANEOUS EXHIBITION
EMBASSY CHESS CLUB, FOLSOM, Pa.
May 3, 1979
(W) Wm. Atkinson (B) Walter Browne
Notes by the winner

1 P-QB4	P-K4	6 B-N2	B-K3
2 P-Q3	N-QB3	7 N-B3	B-K2
3 N-QB3	N-B3	8 O-O	O-O
4 P-KN3	P-Q4	9 P-Q4	PxP
5 PxP	NxP		

White's rather tame line leads to equality, but nothing more.

10 NxP	N/3xN	11 NxN	...
--------	-------	--------	-----

If 11 QxN B-B3 etc., weakens White's Queen side.

11 ...	BxN	14 KxB	B-B3
12 QxN	KxB	15 B-B4	P-B3
13 QxQ	KRxQ		

15 ...BxP 16 QR-N1 with strong play against the Q-Side. e.g. 16 ...B-R6 17 BxP R-Q2 18 RxP B-Q3 19 R-B1 and if R-B1? 20 BxB wins.

16 QR-Q1	P-QN4	17 P-N3	P-B4
----------	-------	---------	------

The majority on the Q-Side bears watching.

18 RxRch	RxR	19 R-QB1	R-QB1
----------	-----	----------	-------

If 19 ...R-Q4 20 P-K4 favors White.

20 B-K3	B-K2	21 P-QN4?	...
---------	------	-----------	-----

I go way too far here to try and win a pawn. White's King should cross to QB2 to hold the fort.

21 ...	P-B5	22 BxP	...
--------	------	--------	-----

White is in trouble now regardless, so giving up a piece the way he does is as good a drawing chance as any.

22 ...	BxP	25 R-N8	RxR
23 R-QN1	B-R6	26 BxR	P-B7
24 RxP	P-B6	27 B-B4	...

I must believe their should be a win for Black, but in view of the chance for a B+RP vs K, that can't be won, and the game conditions, I still have good practical chances.

27 ...	P-B4 ?		
--------	--------	--	--

Not best, leads to pawn exchanges, and increases drawing chances. Better was 27 ...K-B1.

28 K-B3	K-B2	30 P-N4	PxNP+
29 P-K4	K-K3		

I would have preferred 30...PxKPch denying White the passed King-Pawn he gets now.

31 KxP	P-B8(Q)	32 BxQ	BxB
--------	---------	--------	-----

33 P-B4	B-R6	35 P-R5	...
34 P-R4	K-B3		

White's draw seems secure now. Remember he needs only trade his 4 pawns for Black's NP to establish a draw.

35 ...	K-K3	37 K-N4	P-R3
36 K-N5	B-K2ch		

Black is leary of a future P-R6.

38 P-R4	B-N5	41 K-B3	K-Q3
39 K-B3	K-Q3	42 K-N4	...
40 K-N4	K-K3		

My draw offer was declined hereabouts. However, the following King maneuver only creates losing chances for Black.

42 ...	B-B6	45 K-B5	K-Q5
43 K-B3	K-Q3	46 P-K5	K-Q4
44 K-N4	K-B4	47 K-N6	B-Q7 ??

Fatal, 47 ...K-K3 48 KxP B-Q7 49 KxP BxPch etc. = was the logical end.

48 K-B7! ...

Evidently only KxP was considered.

48 ...	BxP	50 P-K7	Resigns
49 P-K6	B-N4		

After 50...BxP 51 KxB and the Black King must go after White's QRP and leave the king side to its fate.

GEORGIA STATE CHAMPIONSHIP
Marietta, Ga.
May 1978
DUTCH DEFENSE

Notes by JEM.
(W) Joe Scott (1848)
(B) Jim Pressley (1778)

1 P-Q4	P-K3		
--------	------	--	--

Black wants to play a French

2 P-QB4	P-KB4	5 BxN	QxB
3 N-QB3	N-KB3	6 P-K4	B-N5?
4 B-N5	P-KR3		

6 ...PxP 7 NxP B-N5ch seems better.

7 P-K5	Q-K2	11 P-QR3	BxN+
8 P-B4	O-O	12 PxR	P-B4
9 N-B3	P-QN3	13 P-Q5	PxP
10 B-K2	B-N2	14 PxP	P-Q3?

This move gives White a connected passed KP on the 6th rank.

15 P-K6	Q-B3	19 P-QR4	P-QN4
16 Q-Q2	N-R3	20 RPxP	PxP
17 O-O	N-R2	21 R-N1	P-N5
18 P-B4	P-R3	22 KR-K1!	...

The passed pawn is much stronger with the Rook behind it.

22 ...	R-R6	30 N-N2	Q-N3
23 B-Q1	R/1-R	31 N-K3	N-B3
24 B-N3	Q-K2	32 P-B5	Q-N4
25 Q-KB2	N-K	33 Q-N3	N-K5
26 N-R4	Q-B3	34 Q-R2	P-R4
27 P-R3	B-R3	35 QxRP	QxQ
28 P-N4	PxP	36 PxQ	N-Q7!
29 PxP	R-R2		

Threatening to win the Bishop, or at least an exchange.

37 N-B2! ...

Now if 37...RxR 38 RxR NxR Black wins a Bishop, but comes 39 P-K7 and Black will have to give up a Rook to stop the pawn.

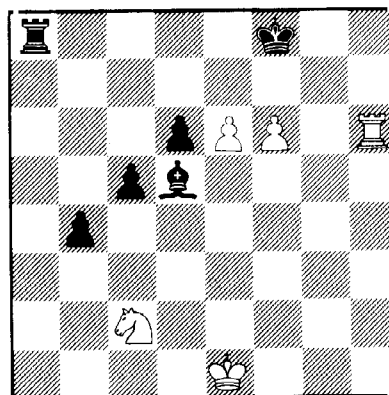
37 ...	N-B6ch	39 RxR	NxR
38 K-B2	RxB	40 KxN	BxP
		41 R-K3	...

Again threatening to advance the KP, without this threat White is busted.

41 ...	K-B1!		
--------	-------	--	--

White is now lost because he cannot protect his Q-pawn.

42 P-R6	PxP	44 R-R3	BxP!
43 P-B6	R-R1	45 RxP	...



Now Black can close the door with 45...BxP and if R-R8ch B-N1, but--

45 ...	K-N1 ??	49 N-B2	P-B6ch
46 P-K7	K-B2	50 K-B1	P-N6!
47 N-K3	B-K3	51 N-R3	...
48 K-Q2	P-B5		

On 51 N-Q4?? Black has R-R8mate.

51 ...	P-Q4 ??		
--------	---------	--	--

51 ...RxN with the threat of R-R8 mate wins. i.e. 51 ...RxN 52 R-R7+ KxP 53 P-K8(Q) R-R8mate.

52 K-Q1	B-N5ch	56 P-K8(Q)+	RxQ
53 K-K1	P-Q5	57 P-B7dis+	K-Q4dis+
54 N-N5	P-B7	58 PxR(Q)	P-B8(Q)+
55 N-Q6+	K-K3	59 K-B2	QxR

Black is playing for a win, safer was 59...Q-B5+ 60 K-K1 Q-N6+ and White cannot play K-Q2 because of Q-B6mate.

60 Q-N5+! = ...

The point is Black cannot play KxN because of Q-N6+ winning the Queen.

60 ...	K-K3	62 N-B7+	Resigns
61 QxP+	K-K4 ??		

An exciting end to an instructive game

PIRC DEFENSE
April 14, 79
Chapel Hill N.C.
(W) Greg Samsa (2192) (B) A.Cruz (2016)

1 N-KB3	N-KB3	5 P-K4	P-Q3
2 P-QB4	P-KN3	6 B-K2	B-N5
3 P-Q4	B-N2	7 B-K3	QN-Q2
4 N-B3	O-O		

The point of Black's system is to induce White's central pawns to White squares, thus blocking the action of his KB. Black often cedes the two Bishops to further this aim i.e. 7...KN-Q2 8 P-KR3 BxN 9 BxB QN-B3 10 P-Q5 N-R4 11 B-K2 BxN+ 12 PxR P-K4 13 PxP PxP 14 O-O P-N3 15 P-B4 Q-K2+ Bukic-Stull 1975.

8 N-Q2!?

Doesn't really lose time, as the Knight is headed for the Q-Side anyway.

8 ...	BxB
9 QxB	P-B3
10 O-O	P-K4
11 P-Q5	P-B4

11 ...PxP 12 BPxP P-QR3 13 P-QR4 R-B1 14 OR-B1+ Winter-Eliskases 1933.

12 QR-N	Q-K2
13 P-QR3	P-KR3?!

A more modest plan such as 13...P-QR4 (To prevent the QRP from becoming a target) is better as the exchange of white squared Bishops has brought about a situation more favorable to White than the usual positions of this kind. (White has eliminated a potential ly bad piece and relieved the congestion around his King. 13 ...P-QR4 14 P-QN4 RPxP 15 PxP P-N3 16 PxP Px 17 R-N7 KR-N 18 KR-N RxR 19 RxR Q-B1=.

14 P-QN4	PxP
----------	-----

14 ...P-N3 is better although White obtains pressure on the QN-File.

15 PxP	NxP
--------	-----

15 ...P-N3 should still be played.

16 N(Q)xN	P-B4
17 P-B5	...

White's Q-Side initiative grows in the absence of the usual K-Side counterplay.

17 ...	PxN
18 NxP	PxP
19 PxP	N-B3
20 P-Q6	Q-Q2
21 Q-B4+	K-R2
22 NxN+	BxN
23 Q-Q5	...

23 Q-N5 R-B2 24 QxQ RxQ 25 R-N3 K-N 26 KR-N P-N3! 27 PxP PxP 28 RxP QR-Q 29 B-B2! 30 R-Q K-B2 31 R-Q5 B-B1=.

23 ...	QR-N
24 R-N3	KR-B
25 R/1-N	R-B3
26 Q-B3	...

Not R-R3 P-R3 27 R/R-N3 P-QN4! Black's pieces are tied down to the defense of his Q-Side, so White shifts his attack to the other wing using the KR-File, 3rd rank, and the light squares as avenues of entry.

26 ...	B-N2
--------	------

26...K-N2? 27 BxP 26...Q-KB2? 27 QxR.

27 Q-R3!	Q-KB2
----------	-------

Exchanging Queens permits a decisive entry along the QN-File, i.e. 27...QxQ 28 PxQ P-N3 29 PxP PxP 30 RxR R/1xR 31 RxR R-B6 32 P-Q7 R-Q6 33 R-N7+-.

28 P-N4!	P-QR4
29 R-N6	

To free the Bishop.

29 ... KxR
 29 ... R/1-QB 30 BxP BxB 31 P-N5
 RxBP 32 QxR+ K-N 33 P-Q7+-
 30 RxR P-R5 31 BxP Q-Q4
 Immediate counterattack f 31...RxB
 32 P-N5 Q-N2 (32...O-R 33 PxB) 33
 PxB QxP 34 QxQ+ KxQ 35 P-Q7 P-R6 36
 RxP P-R7 37 R-R7+-

32 BxB+ KxB 33 P-N5:

Trapping the King.

33 ... Q-Q8+ 35 Q-B3 P-K5
 34 K-N2 Q-Q4+

The ending is won for White after 35
 ...QxQ+ 36 KxQ P-R6 37 R-N3! P-R7 38
 R-QR3 R-QB 39 RxP RxP 40 R-N2 K-B2
 41 RxP K-K3 42 R-N7 K-B4 43 R-B7+ etc
 or 40 ...R-Q4 41 RxP+ K-B 42 K-K4!

36 Q-B6+ K-R2

36...K-N 37 QxP+ K-B 38 Q-R6+ K-N 39
 P-Q7+-

37 Q-K7+ K-N 38 P-Q7 1-0

LITTLE ROCK OPEN

May 26, 79

PIRC DEFENSE

(W) Maheed Nahas (1683)

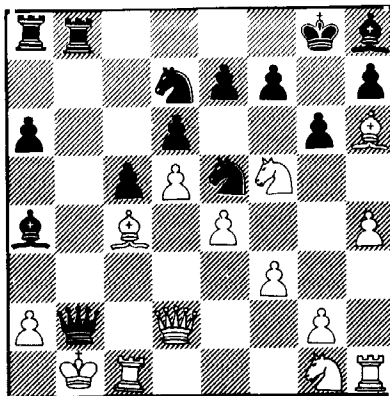
(B) Gary Weeks (1674)

Notes by JEM.

1 P-K4	P-KN3	6 Q-Q2	QN-Q2
2 P-Q4	B-N2	7 P-B3	P-B4
3 P-QB4	P-Q3	8 P-Q5	N-K4
4 N-QB3	N-KB3	9 O-O-O ?
5 B-K3	O-O		

The White King would be safer on the
 K-side.

9 ...	-O 3	14 ...	7-R1:
10 K-N	P-QN4	15 B-Q3	PxP
11 R-B	Q-N3	16 BxP	B-R5!
12 N-Q1	D-Q2	17 N-K3	N/B-Q2
13 P-KR4	KR-N1	18 N-B:	QxP+!!



19 QxQ RxQ+ 20 K-R1 PxN

If 20 KxR NxB Dbl.Ck 21 K-N R-N Mate

21 B-N3 N-Q6 22 Resigns

If 22 BxB R-N5 Dis.Ck and Mate soon.

GOLDEN STATE CLASS CHAMPIONSHIPS
 by Bill Wilwers

Mike Fellingner was a frequent sight
 at Arkansas tournaments in the middle
 and late 60's when he was attending Ar.
 Tech Univ. Now playing in an orchestra
 out in California, he still attends a
 tournament when he is back in our state.

Lately, he writes, he has been taking
 lessons from a master named Jose Mondra-
 gon, a former champion of Mexico. They

are apparently paying off, because
 in a recent large Swiss in Los
 Angeles he scored 2 1/2 points ag-
 ainst competition with an average
 rating of 1974! He figures he gain-
 ed 104 rating points.

Mike was kind enough to send 2
 of his games from that event. He
 admits that his opponents didn't
 play up to their ratings, but he
 still did an impressive job of
 blowing them away.

QUEEN'S GAMBIT DECLINED

TCHGORIN VARIATION

(W) Underwood (1902)

(B) Fellingner (1504)

1 P-Q4	P-Q4	3 N-KB3	B-N5
2 P-QB4	N-QB3	4 N-B3	N-B3

Ivkov-Rossetto, Buenos Aires 1960
 continued 4...P-K3 5 P-K3 KN-K2 6
 P-KR3 BxN 7 QxB P-QR3 8 PxP PxP 9
 R-QN1 Q-Q3 10 B-Q2 P-KN3 =.

5 B-B4	BxN	8 B-Q2	O-O
6 KPxB	P-K3	9 P-B5?	BxB+
7 N-N5	B-N5+	10 QxB	P-K4!

Reacting correctly to flank moves
 with a counter in the center.

11 PxP	NxP	15 P-QN4	P-QN3
12 B-K2	Q-K2	16 N-Q4	PxP
13 R-QB1	N-B5	17 N-B5	Q-K4
14 Q-B2	KR-K1	18 PxP?	QR-N1!

White resigns, a trifle premature
 although after 19. N-N3 R-N7 White
 can scarcely hope to survive.
 Another case made for early cast-
 ling!

IT is well known that some
 players pay no attention to book
 openings - never studying them -

while others seek to play
 non-book moves to get the-
 ir opponents out of pre-
 pared opening lines. Both
 of these type players are
 understandable, yet Black's
 opening moves in this game
 are nothing short of li-
 zarre. An 1891 player who
 opens this way very often,
 cannot hope to retain his
 rating for long!

SCOTCH OPENING

(W) Fellingner (1504)

(B) Juan Fong (1891)

1 P-K4	P-K4
2 N-KB3	N-QB3
3 P-Q4	P-B3?

Weakening the area around
 his King. Usual and best
 is 3...PxP

4 B-QB4 Q-K2
 Now Black blocks in his KB
 as well.

5 O-O	P-Q3
6 N-B3	B-N5
7 B-K3	...

7 N-Q5 looks tempting.

7 ...	NxP
8 BxN	PxB
9 QxP	BxN
10 PxB	...

White has doubled pawns,
 but an overwhelming lead
 in development.

10 ...	Q-K4
11 QR-Q1	...

A matter of taste: I'd
 play 11 Q-K3.

11 ...	P-B3
12 KR-K1	N-R3
13 N-K2	Q-KR4
14 Q-K3	P-KN4

Further neglecting King
 safety to try for a nebul-

PLAN TO PLAY IN THE SUMMER TOURNAMENT! **AUG. 4-5** **ATLANTA** **THE SUNBELT CLASSIC** **A GRAND PRIX TOURNAMENT** **AT THE FABULOUS MARRIOTT HOTEL**

Stay at the luxurious Marriott Hotel
 for half price! (\$26-S or D), 246 Perimeter Center
 Parkway N.E. (I-285 at Ashford-Dunwoody exit)

In 2 Sections:

OPEN: 45/2. EF: \$17.50 if received by 7/28; \$20 at site
PRIZES (1st guaranteed, others based on 45 in section)
\$250-125-75, A, B each \$60.

RESERVE: 40/90. Open to Under 1600
EF: \$14 if received by 7/28; \$16.50 at site.
PRIZES (based on 45 in section)
\$150-80-60

D, E, Unrated each \$50

BOTH: FREE Continental Breakfast
for all players 9 A.M. Sunday
Reg: 8:30-9:30 A.M.
Rds: 10-3-8, 10-3

GCA required (\$5)
Other States OK

ENTER: Steve Hunt, 4153 Wesley Club Drive, Decatur, Georgia 30034

15 N-N3 Q-R5? 18 Q-K6+ K-B2
16 N-B5! N-N 19 Q-B7+ K-N3
17 P-N+ K-Q2 20 Q-NBP B-R3?

The last straw! The Bishop is needed at home to defend Black's QP.

21 R-K4 Q-R6 24 Q-N4+ K-B2
22 Q-Q4+ K-B2 25 R-K7+ Resign
23 QxP+ K-N3

In retrospect, Black must fit into a third category of player - one who knows better, but who thinks he can get away with almost anything against an opponent who is rated almost 400 points below him. Live and learn!

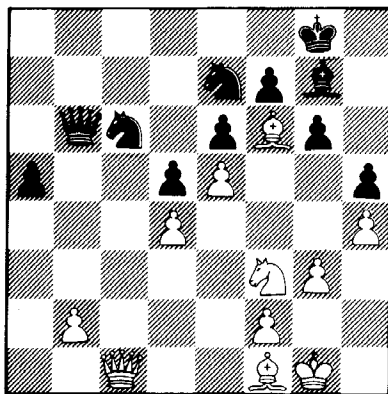
In this game, from the 78 Arkansas Postal Championship (to end, hopefully in the next month or two), Donny Gray scores a point. Black is given almost total freedom to operate on the Q-side while White's compensatory K-side attacking chances never seem to materialize. A slip on White's 25th move cost him a pawn and it is soon over.

CLOSED SICILIAN/ KING'S INDIAN ATTACK
(W) Jim Traylor (B) Donny Gray

1 P-K4 P-QB4 5 B-N2 B-N2
2 N-KB3 P-K3 6 O-O KN-K2
3 P-Q3 N-QB3 7 R-K1 P-Q3
4 P-KN3 P-KN3 8 P-B3 ...

If White were playing a true Closed Sicilian, he would have played N-QB3 at this point or earlier.

8 ... O-O 17 P-R4 N-N5
9 P-Q4 PxP 18 NxNP BxN
10 PxP P-Q4 19 PxB QxNP
11 P-K5 B-Q2 20 B-B1 Q-N3
12 N-B3 P-QR3 21 RxR RxR
13 B-B4 P-QN4 22 R-B1 RxR
14 R-QB1 R-B1 23 QxR N/5-B3
15 Q-Q2 Q-N3 24 B-KN5 P-R4
16 P-KR4 P-QR4 25 B-B6? ...



Loses a pawn. Perhaps 25 B-R3 is better to anticipate Black's N-B4.

25 ... N-B4 28 Q-B8+ K-R2
26 B-K2 N/4xQP 29 B-B1 Q-B3
27 NxN NxN 30 Resigns

A try is 28 BxP??! hoping for 28...BxB 29 PxB PxB 30 Q-N5+ however if 28...PxP 29 Q-N5?? N-B6+ wins the Queen. Donny had been expecting 30 Q-Q8 N-B6+ 31 K-N2 P-Q5 32 BxB NxP+ 33 K-N2 KxB.

ORRIES PERM PALACE
Philadelphia, Pa. June 2, 79
SICILIAN DEFENSE
ROSSOLIMO VARIATION
(W) Costigan (2330) (B) Thompson (A)
Notes by JEM.

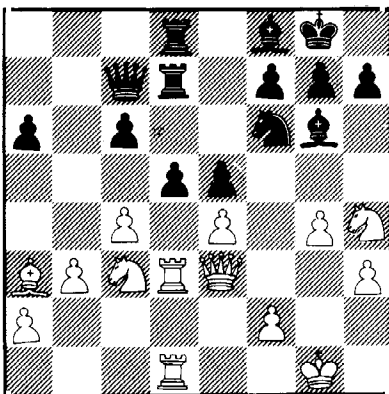
1 P-K4 P-QB4 6 QxP P-Q3
2 N-KB3 N-QB3 7 O-O P-K4
3 B-N5 P-QR3 8 Q-Q3 B-K2
4 BxN NPxB 9 R-Q1 Q-R2
5 P-Q4 PxP 10 P-B4 ...

White seems to have a particularly attractive attack in this Sicilian position with his heavy pieces arrayed against Black's "weak" Q-Pawn, and with his last move, White even has a Maroczy Bind, but in this game Black has a QB pawn and his Q-Pawn is not really backward so --

10 ... B-N5 13 N-B3 N-B3
11 P-KR3 B-R4 14 B-R3? ...
12 P-QN3 R-Q1

A little more pressure for the Black Q-Pawn, but the Bishop is loose out here.

14 O-O
15 Q-K3 R-Q2 18 N-KR4 B-B1!
16 R-Q3 B-N3 19 P-KN4 P-Q4!
17 QR-Q1 KR-Q1



Oops! the weakness is coming at us, but if the pawn is captured White's Bishop falls.

20 BxB forced P-Q5!!

Now the Black Q-Pawn is connected, passed, strong, and threatening mayhem. White, a piece up, has a strategically lost game.

21 Q-K2 KxB 23 N-R4 P-B4
22 NxK+ BPxN
Forced, but good, the White Knight, banished to the edge of the board, must not be allowed to return to the center via Black's QB-four.

24 R/3-Q2 Q-B3 28 R-KB P-N4
25 P-B3 R-KB2 29 R/2-Q1 Q-Q3
26 N-N2 K-N 30 Q-Q2 Q-R3
27 N-Q3 N-Q2 31 K-N2 R/1-KB
32 P-KR4 R-B5!

Sacrificing the exchange rather than giving White a Chance with 32... PxP 33 QxQ PxQ and Black's KR Pawns, all 3 of them, are not impressive, of course not, 32...QxP?? 33 R-KR1+.

33 NxR RxN 37 K-R2 K-R1
34 Q-R5 PxP 38 PxP R-B3
35 Q-Q8+ N-B1 39 P-B6 Q-B5+!
36 P-N4 P-R6+

A neat little maneuver to pick off the QB-Pawn, and hold the Knight at the same time.

40 K-R1 RxP 46 P-R6 RxR
41 Q-Q5 R-QN3 47 PXP+ KxP
42 R-B2 P-KR4 48 RxR QxR
43 PxP R-KB3 49 QxP+ Q-B3
44 P-B5 Q-N6 50 Q-B7+ K-R3
45 R/1-KB RxP: 51 K-R2 Q-B7+
52 KxP Q-B6+

53 Q-N3 Q-RB+ 9 Q-B4 BxB??
White resigns, after 54 Q-R2 QxQ+
55 KxQ Black's Q-Pawn walks in.

ATLANTA CHAMPIONSHIP
May 26, 1979

MAROCZY'S BIND
(W) Michael Rohde (2426)
(B) Charles Jurjevich (1769)

1 P-K4 P-QB4 7 B-K2 B-N2
2 N-KB3 N-QB3 8 B-K3 O-O
3 P-Q4 PxP 9 O-O B-Q2
4 NxP P-Q3 10 R-B1 R-B1
5 P-QB4 N-B3 11 Q-Q2 N-K4
6 N-QB3 P-KN3 12 P-QN3 R-K1?

12...N/4-N5 forcing a White Bishop off the board is better.

13 P-KR3 Q-R4 21 N-Q5 BxN
14 KR-Q1 N-B3 22 BPxB N-N1
15 N-B2 B-K3 23 PxP PxP
16 P-R3 N-Q2 24 P-B4 N-N3
17 P-QN4 Q-K4 25 B-N5 R-B1
18 N-K1 P-B4 26 N-K6+ Q-R5
19 N-B3 Q-B3 27 B-B2 Q-R3
20 N-N5 N/Q-K4 28 BxP! ...

There is no rush to play NxR after 28...RxR 29 RxR R-B2 30 BxN or R-B8+ and 31 RxN.

28 ... N-R3 31 NxR QxN
29 B-Q7 RxR 32 B-Q4 Q-R3
30 RxR R-R1 33 B-K6+ ...

Now White's Bishops look strong.

33 ... K-B1 34 Q-QB2 ...

With the threat of Q-BB+!

34 ... N-B4 37 RxN PxR
35 QxP+ K-K1 38 BxP R-B1
36 Q-B7+ K-Q1 39 B-N6+ 1-0

After 39...R-B2 comes 40 P-Q6!

John Fedorowicz is the newest US International Master, he now lives in Florida, and the USCF sent us a little "sharpness" from their files on John.

GHI TOURNAMENT
1977 New York
(W) Mike Valvo -Senior Master
(B) John Fedorowicz - IM.

1 P-KN3 N-KB3 8 N-B3 P-Q5!
2 B-N2 P-Q4 9 N-N5 P-K4
3 P-QB4 P-K3 10 P-Q3 N-Q2
4 N-KB3 B-K2 11 P-K3 R-K1
5 O-O O-O 12 R-K1 P-QR3
6 P-N3 P-B4 13 N-R3 P-B4
7 B-N2 N-B3

Black has a big pawn center.

14 R-K2 B-B3 21 B-Q5+ B-K3
15 PxP BPxP 22 NxP BxB
16 Q-Q2 N-B4 23 NxN B-B3
17 P-QN4 NxNP! 24 RxR+ QxR
18 QxN NxP 25 R-K1 Q-R4
19 Q-Q2 NxR 26 R-K3 BxN!!
20 NxP P-Q6

There is no 27 QxB Q-Q8+ wins.

ORRIE'S PERM PALACE #1
Philadelphia
PIRC DEFENSE
(W) Ed Ost (1091)
(B) Leopold Sukienik (1669)

1 P-K4 P-Q3 5 Q-Q2 O-O
2 P-Q4 N-KB3 6 B-R6 P-B4
3 N-QB3 P-KN3 7 O-O-O PxP
4 B-KN5 B-N2 8 N-Q5 NxP

If 11...NxR 12 R-KR4 and White wins.

12 N-KB3 R-B2
13 N-N5 R-N2
14 N-B6+ PxN
15 B-B4+ K-R1
16 N-B7+ RxN
17 BxR N-N5
18 RxN! PxR
19 R-K1 B-Q2
20 BxP Q-N1
21 R-K7 B-B4
22 RXP+ QxR
23 QxQ Checkmate

SOUTH ARKANSAS OPEN
June 16, 79
SICILIAN DEFENSE
FOUR KNIGHTS VARIATION
(W) Chuck Niggel (1525)
(B) Donny Gray (1996)

1 P-K4 P-QB4
2 N-KB3 P-K3
3 P-Q4 PxP
4 NxP N-KB3
5 N-QB3 B-N5
6 N/4-N5 P-Q4
7 P-QR3 BxN+
8 PxP? P-QR3

8 NxR is book.

9 N-Q4 NxP
10 P-B3?? Q-R5+
11 K-K2 Q-B7+
12 Resigns

SOUTH ARKANSAS OPEN
June 17, 79
SICILIAN DEFENSE
(W) Vince Parsons (1780)
(B) Donny Gray (1996)

1 P-K4 P-QB4 2 P-QB3 N-KB3
3 P-K5 N-Q4 4 P-Q4 PxP 5
QxP P-K3 6 B-QB4 N-QB3 7
Q-K4 N-N3 8 B-N3 P-Q4 9
Q-K2 B-Q2 10 P-KB4 R-B1 11
N-B3 B-K2 12 O-O O-O 13
B-B2 Q-B2 14 B-Q3 P-QR3 15
B-K3 N-B5 16 B-KB2 P-QN4 17
N-Q4 P-N3 18 P-KR4 B-B4 19
P-R5 BxN 20 BxB NxR 21 PxN
Q-N3 22 Q-KB2 N-R4 23 N-B3
N-B3 24 N-K2 N-N5 25 Q-B3
NxR 26 QxN P-N5! 27 KR-Q
B-N4 28 Q-Q2 BxN 29 QxN
R-B5 30 Q-Q3 R/1-B 31 PxP
R-PxP 32 R-Q2 P-R4 33 R/1-Q
P-R5! 34 K-B2 P-R6 35 P-QN3
R-B6 36 Q-K2 Q-B3 37 K-B1
R-B7 38 RxR QxR 39 R-Q2
Q-KB4 40 Q-B2 R-B8+ 41 K-K2
Q-K5+ 42 Q-K3 QxP+? (42...
R-K8+ is the move) 43 Q-B2
Q-K5+ 44 Q-K3 R-K8+ O-1.

SOUTH ARKANSAS OPEN
QUEEN'S PAWN OPENING
(W) Tony Williams (Unr)
(B) Jeff Lehigh (1583)

1 P-Q4 P-Q4 2 N-QB3 P-QB4
3 P-K4 N-KB3 4 B-KB4 QxP
5 PxP Q-R4 6 Q-Q2 QxP 7
N-N5 P-K4 8 R-Q B-K2 9
P-QN4 Q-N3 10 BxP N-R3 11
B-Q6 B-Q2 12 BxB KxB 13
P-QR4 KR-Q 14 Q-N5 K-B 15
R-Q6?? (Better is 15 B-N3
developing a piece) B-N5!!
16 RxQ R-Q8 Checkmate.

PLAY CHESS AT THE WILKES-
BARRE OPEN AUGUST 18-19, 79

ORGANIZATION

CHESSE 0.0 Tom Galloway

Greetings! Since this is the last Chessman before the LPO and the closed, there's a lot of things to say. First item is new addresses. My Zip code was accidentally transposed in the last issue. It should be 28768. That address is good until August 15th when I go back to Chapel Hill. I moved down the hall so my new address there will be 406 Morrison, Chapel Hill, NC 27514.

This years closed (NC Championship) will be held again in Chapel Hill. See details in the tournament section. Please do not mail advance entries to me before the 17th or so, due to the high probability of their getting lost in the shuffle and/or the post office.

The NCCA business meeting will be held on Saturday Sept. 1, during the closed registration. All members are urged to come after the very low turnout we had last year. Any member with anything he/she would like to bring up should either write me or talk to me at the LPO in order to put it on the agenda.

Leland Fuerstman has moved to Kansas City. For the past several years, Leland has been very active in NC chess, culminating in his handling of the Korchnoi exhibition in Charlotte in March, and winning the SCA organizer of the month award. Good luck Leland.

Over the next academic year, the Ram tournaments will go thru a few changes. Instead of a Jan. Ram, a weekend tournament will be held. Also, a year long competition for "Ram player of the year" will be held with the winner receiving a year's free entries to the Rams. The player with the most total points in any 4 of the 6 Rams held will win. In case of a tie, the entries will be divided. Also the player with the most total points for either semester (Sept-Nov & Feb-Apr) will receive one free entry.

Membership stands at 232. The treasury total is \$598.91. After subtracting the magazine obligation to all members and for the next year for the life members, the assets equal \$143.41

The big news in chess organization over the last few years has been the success in Cumberland County Tennessee. Atlanta would need at least fifteen times as many USCF members to be on a par with Cumberland County! Therefore, the following story is reprinted from the Tennessee Chess News.

CUMBERLAND COUNTY - BLUEPRINT FOR SUCCESS
BY Talbot W. Rogers

Cumberland County, with a population of 26,000, has more TCA members than any area in the state, including Nashville and Memphis. The secret of this growth appears to be the strong school program at all age levels. In 1972 several local Jaycees discussed the possibility of forming a chess club in the bar of the Crossville Holiday Inn, and the Cumberland County Chess Club was born. The first Cumberland County Chess Championship tournament soon followed (won by Harry Sabine), and by 1973 the club was able to promote two unrated tournaments.

A year later the club held its first rated tournament with thirteen players, and players attended two other tournaments out of state. USCF affiliation came in 1975.

Harry Sabine and his law office became the hub of recordkeeping and distribution of chess news, and as the years passed the number of tournaments and players steadily increased. Harry's copying machine certainly deserves a share of the credit.

Local tournaments began to be published in CL&R, and in 1977 the first Annual Fairfield Glade Tournament was held with 82 players, which swelled to 129 players last year!

The high school team was already an entity, though, as is true in most Tennessee counties, it was slow in growing and lacked the dynamic foundation that well organized elementary and Jr. high schools could provide.

The flash point was probably reached when Steve Sabine, Harry's son, managed to convince Talbot Rogers, his sixth grade teacher, that a chess

Club at Cumberland Elementary was at least worth a try. Like many elementary teachers, Mr. Rogers doubted the ability of elementary students to play chess, but after Cumberland Elementary Chess Club was formed, found that his students could often outplay experienced adults.

The Martin Junior High School Chess Club was formed shortly thereafter, coached by Lidel Agee. With the constant aid of Harry Sabine and other members of the Cumberland County CC, the two new clubs thrived. Entry in the Tn. Scholastics Championship in Nashville was rewarded by Cumberland Elementary's winning the first place team trophy (by default: they were the only team present) as well as the first and second place individual trophies. Martin finished fourth of seven teams.

Later, when Cumberland Elementary's team picture appeared on the front page of both local newspapers, Harry Sabine termed it "...the only thing that did more to spur interest in scholastic chess than anything else." With this publicity, he was able to solicit funds from local merchants and organizations to send both the Martin and Cumberland Elementary teams to the nationals, held a few months later in Minneapolis and Atlanta. The value of newspaper pictures and stories has ever since been a priority of the Cumberland County Chess Club.

Other schools in the county were scouted for chess interest, their principals talked to about

August 18-19, 1979

in Columbia, SC

it's the 2nd Annual

MIDLANDS OPEN

in two sections



OPEN:

Prizes are \$100-75 to 1st-2nd, \$25 to Top 1550-1699 and to Top Under 1550. Amounts are based on 25 entries, and have a minimum guaranteed total of \$90. Entry fee is \$12 at the site or \$10 if received by 8-16.

RESERVE:

Open to 1399 and under. Prizes are \$45-30 to 1st-2nd, \$15 to Top E, and \$10 to Top Unrated. Amounts are based on 25 entries, and have a minimum guaranteed total of \$40. Entry fee is \$6 at the site or \$5 if received by 8-16.



The 2nd Annual Midlands Open will be a five-round Swiss at the Wade Martin Building of Midlands Tco, 316 Beltline. Registration is 8:15-9 AM. Rounds begin at 9:15-1:45-6:15 Saturday and 9-1:30 Sunday. Time Control is 40/90. Smoking is not allowed in the tournament room. Nearby lodgings are available at the Best Western Motel, 4502 Devine. Mail advance entries to David Erb, 106 Wembley, Columbia, SC 29209. SCCA membership is required (other states ok).

supporting a club, and supplied with chess sets whenever needed. Homestead Elementary School, coached by teacher John White, soon organized a strong chess team. Mr. White, meeting with different groups of students three afternoons a week, quickly won a place of respect for Homestead in the county's chess community.

In 1978 Cumberland County stormed the Tenn. Scholastics Championships in Nashville, with 40 entries out of a field of 124. The high school won the novice championship, with Pamela Campbell taking the first place novice individual trophy. In the junior high division, Martin took second place as a team, while Cumberland Elementary edged out Homestead (the only other elementary team) to win the first place trophy, as well as second and third place individual trophies. Meanwhile, back at the ranch, Harry and the county chess club had arranged for more tournaments. Local merchants, impressed with the performance of the county's teams, were providing more and more money for trophies, transportation, lettered shirts, and the like. Local papers became more generous with chess coverage, and Pam Campbell's victory in the novice section was published in Sports Illustrated (March 5, 79). She was given a trophy and other honors in a special high school assembly.

The Crossville Scholastics, held Dec. 2-3 78,

drew several teams from other states. The first Southern Elementary/Junior High School Championships (Mar 31-Apr. 1) drew participants from as far away as New York.

With the Nationals at hand again in 79, clubs on all levels are presently raising funds from a variety of sources-- basketball games, a slave sale, a chess carnival, school movies, and donations by local merchants and others. Three county teams have made firm plans to attend the Nationals in Minneapolis and Philadelphia. The Cumberland County School Board has been very cooperative in granting paid leave to involved coaches and chaperones.

To further spur interest and performance, the Cumberland County CC has held two chess classes at night during the past six months. Both were filled to capacity, with a majority of the participants from the elementary school.

Another strategy has been to encourage beginners to become rated as soon as possible. Ratings of "0" or "1" are not uncommon, but frequent publication of rating sheets quickly rewards those who make upward progress.

Some unofficial goals for the future are: (1) to have a strong chess program in every school in the county; (2) to win the state open high school championship; and (3) to win a national championship at some level.

LETTERS TO THE EDITOR

Bill Adickes, Bob Eoff and other (Asheville, N.C.) club members will be competing at the LPO Open July 21 and 22 at Clemmons. Prize money totals \$6000.00....!

Dear Earle:

23 April 79

Thanks for sending me a sample copy of The Chessman. I'm sending you a copy of MCL #3.

I wish you and your confederation continued success, but I don't think the MCA is willing at this time to go in with you.

The MCA is really the only active chess organization in Mississippi, with the possible exception of the Gulf Coast CC. This means that there is very little activity on the club level--and very few chess clubs.

Other than run the state championship every year, about the only thing the MCA does is publish a chess letter. If the MCA ceased to publish its own chessletter, there would be little else for the organization to do. Also, there would be almost no incentive for a Mississippi chess player to join.

If we were a state with many active CC, the situation might be different.

The reason I wish you continued success is that your group will eventually supply the services that USCF is supposed to provide but won't provide any more. Current USCF policy is hurting chess in rural areas very much. USCF will no longer report on tournaments unless a hundred or more persons attend. USCF will no longer publish tournament announcements without advance fees (where is the money suppose to come from?). This de-emphasis on local chess is cutting the grass roots of chess participation and drying up club activity in rural areas. Eventually, USCF membership from non-urban states will be reduced. In our state there is already a trend to hold non-USCF tournaments with substantial prizes offered.

Since USCF will no longer provide these essential services, somebody else will. Regional chess publications who do care about local chess will become more important in the future.

So you have my best wishes....

Sincerely,
Ed Issa MCL editor

Perhaps the MCA would be well advised to develop their own chess program, Cumberland County style, rather than wait on someone else to organize chess in Mississippi.-Ed.

Dear Mr. Morrison:

It was indeed a privilege to host your meeting here at the Sheraton Inn-Atlanta Airport recently.

I trust all facilities and services were to your complete satisfaction and that your meetings were productive and enjoyable.

Certainly, our sales office will be looking forward to the continued opportunity of arranging your future meetings with us here at the Sheraton Inn-Atlanta Airport.

Again, my personal thanks to you and your fine organization for selecting our hotel to serve your meeting.

Sincerely

Stephen A. Brown
President and General Manager

We will just have to oblige Mr. Brown.-Ed.

TOURNAMENT SITE by Earle Morrison

One of the big problems any chess tournament organization has is arranging for a tournament site, either free or at a modest charge. After years of experience and various blunders, I have found some helpful rules to go by.

First and foremost among these is to try to use facilities which would not otherwise be used. Commercial hotels with a five day a week business are ideal for this, also to be considered are restaurants, bars, beauty salons; and banks which are in the financial district of a big city, as they are normally closed on the weekends. Seasonal factors are important, depending on the city, your best shot is during the slack season. Contact your local convention bureau, discuss your tournament honestly with them. Try to get the convention bureau to suggest good prospects, try to get at least 3 and preferably 5 prospects. Hotel people are competitive too, they would rather lose money than have the guy down the street get the business. It is easier to book several tournament dates at once than one at a time. On a one shot deal the hotel has no choice but to go after the maximum profit, when you show them a list they realize they are talking about a steady business, that is a different ballgame. Have a fact sheet made out on the tournaments you will be putting on next year, example "The Coastal Empire Team Championships" Sept 7-8, 79 last years attendance 134 took 56 rooms at the Statler-Hilton, etc. This year we are expecting 150-160 whatever. Impressive sounding tournament titles are helpful, as opposed to "The Skid row dancers mini-quadrant." Have a copy of The Chessman and CL&R in your hand as you meet the salesman and be quick to explain that you need to book the tournament well in advance so that the tournament can be extensively advertised in these magazines. Hotel people have a real fetish about any kind of advertizing, that will really get them in the mood. Ask to see the playing site, be sure to check it for the usual things.

After checking the site ask the salesman which of the tournaments listed below would suit his hotel best. The salesman will either say "We will take them all." or "We are normally booked from Jan. thru April, however, the summer tournaments look good." Fine then only talk to him about your summer tournaments. Be sure to ask "What kind of occupancy does your hotel have in the summer?" It is important to make the salesman admit whatever it is. Keep in mind you are posturing yourself not seeking accurate hotel data for some learned essay, and the salesman may elect to "Blow smoke" with "We have about 92% occupancy." In which case you thank him for his time and take off, on the other hand he may say anything from 48 to 80%, whatever figure he gives you it won't be low. Keep your eye on the salesman, of course, occasionally you will offer him a piece of business that is just what he wants. You will notice him watering at the mouth. This is a

good time to unload your turkeys something like this "Well, we intend to book this tournament along with our CLOSED MATCH CHAMPIONSHIP which will take 2 sleeping rooms, 1000 square feet of playing room, a skittle room, and 3 complementary rooms for TD's; can you handle that?" This "Piggybacking technique" is by far the most difficult negotiation, the hotel people get confused, and lose interest, for beginners it is easier to go one at a time. You have now concluded the first interview, advise your salesman that you have another appointment, but you will be back in touch, or he can call tomorrow. Don't talk prices at this point. The salesman you are talking to can only offer standard prices, suggest that he talk it over with his general manager and give you his best price. Buying hotel space is like buying a used car, the first price you get is simply testing the water. The likelihood is that the hotel will make money whatever price they give you. It is true that there is some variable cost associated with cleaning the rooms as well as lighting, heating and the like, but it is relatively trivial to the revenues from even 20 sleeping rooms, and the money that a hundred people will spend in the hotel.

Overnight, the hotel salesman, will make a big pitch to his General Manager about what a wonderful piece of business he has found.

The next day, it is far better if the salesman calls you, you are ready to talk prices. A strong line here is "Several hotels want this business, however, your hotel would be excellent I particularly liked so and so about your hotel." Then give him a price certain that will get the business. Don't try to stretch the salesman out or ask for things you don't really need.

Phase II - Making the contract work.

After the contract is signed your work begins. You have three objectives here:

- 1.) That the hotel doesn't panic prior to the tournament, if they do they will book another piece of business at the same time, this may give rise to a situation where you could sue, but the damage has been done. So keep in touch with the salesman, a brief call will keep his confidence. Apparently, hotels like airlines have alot of "no shows".
- 2.) You want the hotel to make money on the tournament.
- 3.) You want the hotel to admit they made money on the tournament.

The tournament needs to be as attractive as possible to out of town players, also, if the hotel is expensive there is the threat that players will stay across the street. Therefore, it is necessary to get a discount on the sleeping rooms, and in the case of a team tournament a quad rate.

If you have complimented the salesman several times during the contract period, which you should, the salesman will convince himself that you would pay any price to return. In this case the salesman will be tempted, after the tournament, to try what is known in the trade as a "Posturing maneuver." The opening line in this gambit goes something like this "We only had three sleeping rooms, I'm afraid next time we will have to charge our normal \$600. a day meeting room charge!" there are a multitude of reasons why this can and does occur, most of which have to do with poor record keeping on the part of the hotel, particularly on Saturday if the reservation desk was busy. The tournament organizer should have his own list, and check with the reservation desk from time to time to see if the hotel is sold out. The organizer can then reply with the refutation to this gambit "Gee, that's funny, I have a list of 108 rooms our people took, and it would have been more had you not sold out; would you like me to bring my list down?"

I caught on to this little trick when one salesman had the spunk to tell me he had no sleeping rooms from a three day 140 man tournament (that's impossible). He later bragged to a competitor down the street about what a sale he had made picking up 53 rooms for two nights! He still writes me from time to time saying "He will stick his neck out one more time." I never answer.

ONE DAY TOURNAMENTS - QUICK SWISSES - ETC

Find a businessman's restaurant that would normally do little or no weekend business. Thad's Steak and Books tournaments are a perfect example.

Bars and lounges are fair prospects particularly for chess clubs. The same idea here prevails, meet early in the week when the bar would normally be empty. Actually any business, which is going to be open, but not busy and likely to get business from the chess-players is a prospect, even a beauty salon, don't knock it until you have tried it.

WHY PLAY CHESS ? by Bill Wall

Why does anyone play chess? There is always someone better than you, and who likes to lose? Let's look at the benefits of chess.

First of all, chess helps you control your temper. Everyone knows how gracefully chess players resign as they smile and offer a handshake of congratulations. Hah! William the Conqueror (no not Bill Lombardy or myself) lost a game to the Prince of France and smashed the board over his head, and it was no cheap cardboard board either. Grandmaster Nimzovich was so upset losing a game that he got on top of the table, pointed at his opponent, and yelled out "Why must I lose to this idiot?" The English master Blackburne hated to lose at chess so badly that he once threw his opponent out of the window after losing a game. Luckily, for his opponent, the tournament was on the first floor. One top NC player lost a game and got his revenge by setting his opponents King on fire.

Second, chess contributes to true sportsmanship. When Fischer won the World Championship, his remark to the person congratulating him was "Shove off, jerk." A Grandmaster was bribed \$300 to lose to another Grandmaster in order to qualify for the candidates tournament. An opponent was about to Queen his pawn against a GM. He picked up a Queen and rolled it in his hands while waiting for the GM to make his move. The GM suddenly jerked the Queen out of his opponents hands and flung it across the tournament hall. The opponent had to go find his Queen.

Third, chess teaches you about the bare necessities of life. The Mexican master, Carlos Torre, was caught running down Fifth avenue completely naked in New York. A Police master went further by running through a tournament hall shouting "Fire!"

Fourth, chess teaches you how to become more religious. World Champion Steinitz claimed to be in direct contact with God and occasionally beat God in a game of chess.

Fifth, chess teaches you military strategy. Napoleon may have been a great military leader, but also one of the worst chessplayers and a lousy cheater as well. He would move a bishop or knight to a wrong square or knock over a piece "accidentally" and set it up on a different square.

Sixth, chess can never be underestimated. IM Horowitz made a brilliant move in a small tournament. His opponent literally dropped dead.

BERKELEY REPEATS AS CHESS LEAGUE CHAMPS.

The Berkeley Riots successfully defended their National Chess League Championship by downing the Los Angeles Stauntons, 4-2. The Riots are the only team to win the Championship twice, and to win it in successive years according to a USCF report.

Subscribe now to The Chessman! \$4.00 per Yr

CHESS CLUBS

THE LARGO CHESS CLUB

Largo, Florida is located just north of St. Petersburg, Florida and across the bay from Tampa. For a small town, it is quite active in chess. On the first of the year the Largo Chess Club opened it's doors. The initial response from the chess-playing public was excellent! We average from 20-30 players a meeting and over half of those, are at present, or have been in the past, rated members of the USCF.

The club is located at the Largo Library, 351 East Bay Dr., Largo. It meets from 1-7 PM and players are free to come and go at any time.

The Largo Library has graciously allowed me to direct Sunday Tornados at the Library. These tornados have been well received by the players and have been averaging over 40 players a tournament! As a result of the excellent turnouts the prize fund has been increased each time.

Largo will also be the site of several 2-day tournaments in the future. To be more specific, the 2nd Gulfo Coast Open will be held in Largo on June 9-10.

I certainly hope that any chessplayers who live near Largo, or plans to visit Largo in the future will take advantage of the many chess activities that are taking place in Largo. I think I can confidently say that Largo still has room for continued chess growth and that that growth will continue. If anyone would like to volunteer their services for chess related projects, they can contact Alan Tenan at 595-1454 after 6 PM.

LITTLE ROCK CHESS CLUB

The Little Rock Chess Club meets on Friday nights from 6:00 p.m.-11:00 p.m. at the Arkansas Enterprises for the Blind, which is located at 28th and Fair Park Blvd. The club meets in the Old Monarch Room, located on the third floor of the training building. To get to the room, you must first enter by the Tyler Street door, sign in at the desk; the room is upstairs and to the left. Also, all visitors should sign the club guest book.

Membership dues in the club are \$8.00 per year for adults and \$4.00 for juniors. Benefits include a discount on USCF memberships, in addition to being able to play rated (both club and USCF) games and participate in the club championship. Members also have voting privileges at the business meetings. Persons may also pay a quarter per visit in lieu of the \$8.00 membership fee, but they will not be able to vote at the business meetings, play in the finals of a club championship or receive a discount rate on the USCF membership.

All persons interested in chess are cordially invited to attend the meetings; they will receive three free visits before having to pay any dues.

The Chess Club, in addition to being an affiliate of the USCF, is also an affiliate of the Arkansas Chess Association. The club holds approximately three tournaments in addition to its club championship a year.

Persons desiring further information about the club are invited to attend the meetings or write: Little Rock Chess Club, c/o Danny Williamson, 2316 South Pine, Little Rock, Arkansas 72204.

WHAT'S UP IN PENNSYLVANIA CHESS

by Ira Lee Riddle

As this is being written, I am still recovering from the end of my school year, and three major tournaments in a short span of time. Within four weeks, I was an assistant TD. at the National High School Championships. TD of the Pa. State Scholastic Tournament, and then ran my first Grand Prix tournament, Orrie's Perm Palace #1. It's been a tiring experience, but I've learned a lot from it. Herewith is a report on some of the events.

At the National High School tournament, Ben Franklin High School of Philadelphia was the talk of the championship section. They had no player rated above 1300, yet led for the first three rounds, were in second for the next couple, then in fourth going into the final round. A good round would have catapulted them into the winners'

circle, but they did poorly in that round (I think they got 1 point) and they wound up 14th. In the Junior High Section, Vaux Jr. High won its third consecutive National Championship, running away with the title. Douglass Elementary School, which is a feeder school for Vaux, played in the Jr. High section and came in above average, somewhere around 15th, I think. I was so busy with my section that I never got a chance to find out!

In the state championships, you can see from the crosstables published what happened. The High School section was a real dogfight, not decided until the final round. Vaux checked away with the Jr. High Section, taking the top three team finishes. Their team did not win the third place trophy, as at least one of their players was not a PSCF member. Wm. Tennant Intermediate High School was awarded the third-place trophy over Centerville Jr. High School on tiebreaks. (For those who forgot, W.T.I.H.S. is my school)

The State Scholastic Tournament did not break even financially, and I think you might be interested in the reason why. Last December a group of us met in Philadelphia in order to plan the state scholastic tournament. We were told the Dept. of Parks and Recreation would be a co-sponsor, and that we would be given Fairmount Memorial Hall free of charge, so we went ahead and planned on that, not budgeting money for rooms. Later on, we were informed that we would have to pay for the services of a building engineer, to keep the water running, etc. After some teeth-gnashing, etc., the Dept. was willing to pay their man for one day via comp time (giving him extra vacation time on an hour hour basis), but we would have to pay for his salary and fringe benefits for the longer day. Then I was asked if we had an insurance policy. An insurance policy? That will end up costing us about \$75. The bill has not yet arrived. Neither has the bill for the Dept.'s man. That should run about \$200. In terms of income, we took in about \$370 in entry fees. In addition to the above cost, we had to pay for rating fees (\$68.) and trophies (\$220.). As you can see, the income is nowhere near the outgo. Also, it now looks like we will have to pay for chair rental, and then hope that we are reimbursed by the Philadelphia City Representative's Office. (That last looks very promising, but we (or I) will still have to pay the original bill.) On the better side, Mike Sherman and a group of parents and friends sold hoagies and MacDonald's Juice at the tournament, and turned over \$77 profit to our coffers. Jim Thompson donated a pile of used books, which I received just after the tournament ended, and I was able to sell them for \$53, which will also go to help alleviate the loss at the tournament.

Joe Ohler is in charge of organizing next year's tournament. If you are interested in hosting it, please contact him as soon as possible. He wants to have it scheduled for the early part of April, and have the site selected by December 1st, so we can get it into CL&R in time for two insertions. One or two things to keep in mind-- with an expected turnout of over 100, you will need a Senior TD (or intermediate TD) to run it. Also, try to get a place where you need not pay for help or chairs. A school or mall would be a good place. Again, I do offer to run it for anyone who organizes it. After this past year, I do not plan on organizing such a tournament unless absolutely necessary.

Orrie's Perm Palace #1 was an artistic success but not a financial one. We had planned/hoped for 100 players, with 80 or so being the break even point, and then only 58 showed up. Anatoly Dorzoretz, a Russian immigrant, went 4-0 to win the title outright, defeating Bill Atkinson in the final round. The tournament was notable for two things--the number of upsets, and the number of people surprised that all rounds started on time. One visitor from Pittsburgh arrived at 12:45 or so, expecting that registration would still be going on and he would have no trouble playing. At that time, however, the final names for the first round pairings were being posted. He was pleasantly surprised to see us starting on time. The first round saw Tom Costigan, a local master and number 1 in the tournament, upset by Don

Thompson, an 1800 player. (That game, by the way is in this issue, and is well worth the time to go over it--Ed.) But that got Don only the second upset trophy, as 11 year old, Ted Ost, upset a 1600 player in the third round (We have that one also, great game--Ed.) There were other upsets of over 400 points, and a number of unrateds defeated 1600 players. Orrie Goldsmith, who sponsored the tournament, is planning on holding another tournament somewhat similar to this one, on Oct. 20-21, this time in two sections. See the announcement in this issue of The Chessman. Corporate sponsorships such as this are very good for the PSCF, as well as for chess.

A reminder that the state championships are coming up in a few months. We need to have a nice turnout for this one, or else our treasury will be in deep trouble!

On Sunday morning of the state tournament, we will be holding our annual business meeting. Admission will be to PSCF members only. You can play in the State Tournament without holding PSCF membership, but the difference in entry fees is about equal to the membership cost. So far, the only things given to me to discuss are: 1) whether or not to continue with The Chessman; 2) delegates for next year; 3) ratification of the constitution I wrote; 4) regionalization of Pa.; 5) raising adult dues; 6) what tournaments PSCF should sponsor; 7) setting up of committees; 8) next years scholastic tournament. These are items that people have said they would like to talk about--none of them are motions as of yet.

If you have any items you wish brought up at the USCF delegates meetings in Chicago, get them to me as soon as possible.

PSCF memberships are becoming financially a good idea. Bill Goichberg gave a discount to PSCF members playing in the Philly Grand Prix in May, and will award state memberships for those scoring 6 1/2 in the World Open; The Wilkes Barre tournament in August will give discounts on entry fees to PSCF members, as will Mark Fischer of Lansdale for his tournaments. How about some of you organizers in the western part of the state? Let's get on the ball and push chess out there. I really do not know anyone out there except Bob Dudley, and he's very busy. If you want to have a PSCF tournaments out there let me know.

If you are at the World Open, look me up and say hello. Remember, your PSCF card is good for tournaments in Md., Ga., The Carolinas and Florida. (Don't think that is funny--I just mailed off two memberships to people who were going to play in a tournament in Florida and needed PSCF cards to do so!)

Our state membership is now above 140 members. From only 6 or so last September to over 100 is not too bad a growth, but I expect a lot more by the State Championships. Hope to see you all there.

NEW EXECUTIVE DIRECTOR FOR USCF

Dr. Gerard Dullea has been named the new Executive Director of the USCF. The action took place May 26 at the USCF's Policy Board Meeting in Cherry Hill, New Jersey.

Dullea replaces Staff Director Richard Meyerson as the Federation's chief operations officer. Meyerson has resigned his post for personal reasons and will be on special assignments for USCF until late summer. - USCF report.

Arnold Denker has been elected USCF Regional Vice President.

FISCHER/SPASSKY - "The Chair Incident"

— Donald D. Schultz

The recent shenanigans of Dr. Zouhkar during the Karpov-Korchnoi match caused me to reflect on the famous Russian charges against Fischer for possible cheating in his World Championship match with Spassky. At that time I was acting as Fischer's representative to the Icelandic officials investigating these charges. The full story of the motivations behind those charges and the famous chair incident resulting from them may never be known. However, I feel I should tell what I know and my perceptions.

It all began following the 17th game. Spassky was on the run and the World Championship seemed firmly in Fischer's hands. It started with a press release signed by Russian Grandmaster E. Geller. In it, Mr. Geller discussed possible linkages of Mr. Spassky's erratic play to the chair used by Fischer and the special lighting over the stage. He concluded with the statement that the Russian delegation had requested that the organizers and the chief arbiter initiate an investigation into the examination of the playing hall and the things in it. The press, immediately, seized on the absurdity of the whole thing. The Russians quickly became the ridiculed and Fischer, in spite of his previous behavior, became the hero.

In the meantime, the efficient Icelandic organization put together a comprehensive set of tests which they believed would put to rest permanently the Russian charges. They immediately placed a 24 hour police guard around the playing hall while the tests were conducted.

They divided their tests into three—chemical, lighting and x-ray. The chemical test was aimed at determining if a chemical substance could have entered Spassky's body that would affect his play. They concentrated on how this substance could enter his body rather than what this might be. Injection was discarded as too obvious. Inhaling the air was also discarded because of the difficulty in directing a particular flow of air towards Spassky without also affecting Fischer. Through the mouth was also considered and then discarded because of the individual control each of the players had over their own food and drink. Absorption through the skin was, however, considered a definite possibility. It was hypothesized that a chemical substance could be placed on Spassky's chair and slowly be absorbed into his body during the course of a game. They tested this hypothesis by first removing samples of all the micro impurities from first Spassky's and then Fischer's chair. They did this by using an absorbent cloth and rubbing this over both chairs. They then conducted a gaseous chromatograph test of these micro impurities. This proved that all micro impurities found on Spassky's chair were also on Fischer's. There was no need to conduct the test any further and to identify the individual materials. They concluded that anything absorbed by Spassky from his chair would also be absorbed by Fischer from his chair and therefore deduced no chemical agent influenced Spassky's play adversely.

The second test, the lighting tests, was conducted in two parts. The first part of the lighting test consisted of analyzing the light from the fluorescent light. I never knew the purpose of this test, but it showed nothing out of the ordinary.

The second part of the lighting test involved taking a series of polaroid pictures of the fluorescent lights above the playing area. These photos were then compared with photographs showing the same fixtures when these special lights were being installed. It was from this that the famous "two dead flies" story evolved. The test showed nothing out of the ordinary but did show two dead flies affixed to one of the lights. When all the tests were completed, the press ended up pointing out that the only thing the investigation uncovered were dead flies. They almost totally ignored the mysterious findings from the x-ray test which will be described in the ensuing paragraphs.

The third test was the one that gave the most spectacular results. The objective of the test was to x-ray both Fischer's and Spassky's chairs to see if there was anything in the chairs that

did not belong there and had some relation to the play of the match. Both chairs were identical and were made specifically for the match by a mid-western U. S. manufacturer. Each chair was x-rayed many times, from various angles. I was present during the x-raying and upon completion, they were sent to developing. I left the hall where the x-rays were taken and returned to my room at the Loftleider hotel. The chairs that were x-rayed remained under 24 hour police guard. Later that evening I was called at the hotel by a police official. He asked that I return to the playing hall. Upon entering the hall I was informed that something had showed up in the x-rays of Spassky's chair. It appeared to be metallic and was about twelve inches long and 3/4 inches wide. It had a circular loop on one end. Carpenters were called in with instructions to disassemble the chair. Grandmaster Krogius and an interpreter were present to represent the Russians. I asked that Bill Lombardy be called in; together we would represent our side.

The next surprise occurred. Stripping the chair showed no object. X-rays were taken again and this time the mysterious object did not show up. Where did it go? Was it really ever there? Very quickly, a press conference was called. The results of all tests were presented. The x-rays were deliberately not shown at the press conference. The results of the x-rays were downplayed. Attention to the cause of the unusual x-ray results were deliberately diverted to some unusual wood filler material found in the frame of the chair. (Later tests showed this to be ordinary wood filler.) The press asked no penetrating questions. They concluded the tests proved the falseness of the Russian charges. Very strangely, the Russians eagerly agreed. They, in private, ridiculed their own charges and blamed them personally on Geller.

The organizers of the match were relieved. The match would continue. Indeed, they were the only ones who felt the match jeopardized as a result of the chair incident. They, in fact, felt this was the most serious of all the incidents occurring during the match. They actively sought to downplay it and succeeded. Unable to convince the expert who took the x-rays that he made an error, they had persuaded him to lie if necessary on this point. However, it never came to that.

What did Spassky think? I believe he still feels something strange happened that hurt his play. He stated this, in fact, about a year after the match in a Reuters interview. He also asked Gunnar Thorensson a very strange question when he met him in an elevator at the Hotel Sheraton during the recent chess Olympiad in Buenos Aires. He asked if Fischer had any personal TV set of his present in the playing hall during the match. The answer was "No". But why the question? It made no sense!

What happened? I do not know. But I am convinced something was in the chair and subsequently removed. There is just no other explanation. Multiple x-rays were taken during the first x-raying. It showed up each time. There could have been no mistake. The problem is how was it removed from the chair between the first and second set of x-rays. The chairs were under 24 hour police guard during this period. The night following the x-raying, Brad Darrach, author of "Bobby Fischer vs. the Rest of the World", mentally took me through each period of what happened, moment by moment. One possibility emerged. The object could have been in the seat cushion. The seat cushions were removed but not disassembled by the carpenters and they were not replaced for the second set of x-rays. Subsequently, the seat cushions were checked and nothing found. But something from them could have been removed.

I think Spassky is sincere in his belief that something was not right. Fischer, of course, was not a party to anything. He was supremely confident and his play justified his confidence. I think, the Russians, upset with the crushing blows their World dominance of chess received from Fischer, contrived a plan to discredit him. They may have put something in the chair. They would then make an accusation, invite a test and have the results come out exactly as they did. At this time, I think, for some reason they changed their minds and removed the object from the chair. Had they only gone one step further and demanded the x-rays be exhibited, the press may have bought it and Fischer's great victories would be tainted. Perhaps, they underestimated

the thoroughness of the investigation and were afraid their true role would be uncovered. Whatever, I must point out that a Russian was caught cheating in a recent summer Olympic fencing championship, using a unique electronic device. What with the antics of Dr. Zouhkar at Baguio City—who knows?

ARKANSAS CHESS ASSOCIATION

President
Danny Williamson
2316 South Pine
Little Rock, Ar. 72204

Vice President
Donny Gray
Rt. 8; 1645 Whipcorwill Ln.
Pine Bluff, Arkansas 71602

Treasurer
Chuck Niggel
213 South Valmar
Little Rock, Ar. 72205

FLORIDA CHESS ASSOCIATION

President
Gilbert Cantrell
4040 67th Ave. N.
Pinellas Park, Fl. 33565
Phone: (813) 527-6010

Vice President
Larry Storch
1622 E. Harding Ave.
Orlando, Fl. 32806
Phone: (305) 896-3848

Sec-Treas.
Flora Cantrell
(Same as President)

Directors:
Arnold Denker
2701 N. Ocean Blvd. 8E
Ft. Lauderdale, Fl. 33308
Phone: (305) 564-6126

Charles Turk
12802 SW 12th Terr.
Miami, Fl. 33184
Phone: (305) 226-8235

Garry Sanders
421 Pinellas Way S.
St. Pete, Fl. 32903

Egon Teodorson
775 Malibu Lane
Indiatlantic, Fl. 32903
Phone: (305) 773-3215

Mark Solomon
6 Bayberry Branch
Casselberry, Fl. 32707
Phone: (305) 831-0176

Douglas Carpenter
2853 Post St. Apt. 3
Jacksonville, Fl. 32205
Phone: (904) 389-7989

GEORGIA CHESS ASSOCIATION

President
D.D. Schultz
4798 Olde Village Lane
Dunwoody, Ga. 30338

Vice President
L. Thad Rogers
3055 General Lee Rd.
Macon, Ga. 31204
Phone (912) 742-5607

Secretary
Bill Noyes
777 Briarcliff Rd.
Atlanta, Ga. 30306

Treasurer
Mike Decker
1604-4 Briarcliff Rd.
Atlanta, Ga. 30306
Phone (404) 874-6909

Editor
Allison Bert
1914 Jacolyn Place
Atlanta, Ga. 30329

NORTH CAROLINA CHESS ASSOCIATION

President
Bill Wall
Box 167
Stony Point, NC 28678
Phone: (704) 632-5751

Vice President
Alan Lipkin
2635 Glenhaven Lane
Winston-Salem, NC 27101

Sec-Treas.
Tom Galloway
137 Glen Cannon Dr.
Pisgah Forest, NC 28768

Editor
Sean T. O'Brien
537 Hinton James
Chapel Hill, NC 27514

PENNSYLVANIA STATE CHESS FEDERATION

President
Ira Lee Riddle
Fox Run Apts. F24
365 Newtown Rd.
Warminster, Pa. 18974
Phone: (215) 674-9049

Vice President
Tom Magar
1120 Jacks Run Rd.
N. Versailles, Pa. 15133

Secretary
Bob Dudley
107 Crosstree Rd.
Coraopolis, Pa. 15108

Treasurer
Gary Connors
93 Serene Dr.
Holland, Pa. 18966
Phone: (215) 355-0878

SOUTH CAROLINA CHESS ASSOCIATION

President
William Dodgen
2008 Robin Road
N. Augusta, SC 29841
Phone: (803) 279-6881

Vice President
Marion Mahaffey
1207 Memorial Park Rd.
Lancaster, SC 29720
Phone: (803) 282-2312

Secretary
Charles Braun
7 Winthrop Dr.
Aiken, SC 29801
Phone (803) 648-5446

Treasurer
Harold Kelley
811 Rhododendron Pl. SE
Aiken, SC 29801

Editor—M. Lee Hyder
33 Longwood Dr.
Aiken, SC 29801

CROSSTABLES

JACKSONVILLE CLASSIC CHESS TOURNAMENT

June 23-24, 1979

SECTION "A" - 1800 - UP

Player	RTNG	Rd1	Rd2	Rd3	Rd4	Rd5	TOT
1 John Fedorowicz	2440	W16	W22	W12	D3	D4	3½
2 Jim Roussele	2156	W23	D13	W10	D1	D4	3½
3 Otto Estenger Sr.	2081	W25	D18	D5	W17	D1	3½
4 Randy Kolvick	2064	W14	L10	W13	W18	D2	3½
5 Arnold Denker	2346	D7	W27	D3	D6	W13	3½
6 Wayne Tronclair	2025	D8	W26	D9	D5	W14	3½
7 Lawrence Storch	1967	D5	D24	W25	D9	W12	3½
8 Miles Ardman	1818	D6	L9	W23	W21	W17	3½
9 James Bagley	2179	D26	W8	D6	D7	D10	3½
10 Alberto Prieto	2015	W11	W4	L2	D12	D9	3
11 Mark Snow	1724	L10	Bye	L17	W19	W20	3
12 John Nardandrea	2093	W21	W17	L1	D10	L7	2½
13 Mikael Petersen	1916	W20	D2	L4	W15	L5	2½
14 Jose Garcia	2063	L6	W20	D24	W22	L6	2½
15 Ervin Underwood	1825	L22	D23	W26	L13	W21	2½
16 Roger Peoples	1981	L1	L25	D19	W23	W18	2½
17 Tom Stiers	2023	W19	L12	W11	L3	L8	2
18 Allen Smedley	1550	Bye	D3	D22	L4	L16	2
19 Steve Goins	1814	L17	D21	D16	L11	W25	2
20 R.C. Eastwood	1809	L13	L14	Bye	W25	L11	2
21 Ernesto Barba	1868	L12	D19	W27	L8	L15	1½
22 Leroy Hutto	2050	W15	L1	D18	L14	-	1½
23 Robert Campbell	1876	L2	D15	L8	L16	Bye	1½
24 Jorge Massana	2203	D27	D7	D14	-	-	1½
25 Charles Phillips	1836	L3	W16	L7	L20	L19	1
26 Dewey Manard	1892	D9	L6	L15	Withdrew	1	1
27 James Ledford	1903	D24	L5	L21	Withdrew	1	1

SECTION B

1 Ricardo Romero	1778	W17	W14	W11	W6	W2	5
2 Jay King	1685	W19	W16	W14	W11	L1	4
3 Douglas Carpenter	1731	W4	W8	L6	W9	W7	4
4 Robert Persante	1632	L3	D5	W18	W14	W11	3½
5 Digno Sabio	1712	L8	D4	W15	W12	W6	3½
6 Glenn Leotaud	1753	W9	W7	W3	L1	L5	3
7 Lawrence Beviner	1677	W18	L6	W8	W13	L3	3
8 Donald Stone	1549	W5	L3	L7	W16	W13	3
9 Brad Jeffers	1635	L6	W18	W16	L3	D10	2½
10 Krista Van Laan	1491	L14	Bye	L13	W17	D9	2½
11 David Haines	1725	W15	W12	L1	L2	L4	2
12 Raymond Segebrecht	1463	W13	L11	W17	L5	L14	2
13 Mehmet Goncer	1682	L12	W15	W10	L7	L8	2
14 Otto Estenger Jr.	1683	W10	L1	L2	L4	W12	2
15 Richard Weisel	1630	L11	L13	L5	W7	Bye	2
16 Russell Donnelly	1385	Bye	L2	L9	L8	D17	1½
17 Stan Buie	1650	L1	W19	L12	L10	D16	1½
18 Robert Sharfstein	Unr	L7	L9	L4	LF	-	0
19 Randall Smith	1509	L2	L17	Withdrew	-	-	0

SECTION C

1 George Jackson	1492	W4	W8	W5	W3	L2	4
2 Gerard Curran	1384	D3	W10	D6	W4	W1	4
3 Alpan Goncer	1549	D2	W7	W8	L1	W5	3½
4 Dale Mountford	Unr	L1	W9	W7	L2	W3	3
5 Kirk Patty	1572	D7	W6	L1	W8	L3	2½
6 Robert Felts	1461	W10	L5	D2	W9	L4	2½
7 John McIntyre	1408	D5	L3	L4	Bye	W9	2½
8 Marion Mahaffey	1548	W9	L1	L3	L5	-	1
9 Harold Carney	1299	L8	L4	Bye	L6	L7	1
10 Herbert Dickens	1596	L6	L2	Withdrew	-	-	0

SECTION D

1 Michael Darzi	1390	W6	W4	L2	W11	W3	4
2 Charles Deas	1323	W7	W9	W1	L3	D4	3½
3 Stephen Hart	1312	W12	D11	W9	W2	L1	3½
4 Michael Kirwan	1300	W10	L1	W11	W6	D2	3½
5 Augusta Casimiro	Unr	D8	L6	W7	W10	W11	3½
6 David Lamb	1250	L1	W5	W10	L4	W8	3
7 Randal Ingersoll	Unr	L2	W13	L5	W12	W14	3
8 Ed Miller	1306	D5	W14	-	W9	L6	2½
9 Richard Bohler	1217	W14	L2	L3	L8	W12	2
10 Henry Leialoha	1209	L4	W12	L6	L5	W13	2
11 Clarence Moss	1393	W13	D3	L4	L1	L5	1½
12 Richard Walker	Unr	L3	L10	W14	L7	L9	1
13 Thomas Lonchar	Unr	L11	L7	Bye	L14	L10	1
14 James Marble	1382	L9	L8	L12	W13	L7	1

PENN STATE WINTER TOURNAMENT #2

(1799 and under)

1 Ordo, Joseph	1596	W30	W5	W13	D2	3½
2 Clockner, Alexander J.	1381	W25	W12	W9	D1	3½
3 McFarland, Randall C.	1632	W29	D11	W8	W10	3½
4 Hrenluk, Stan	Unr	W7	D9	D19	W11	3
5 Soveroski, Robert	1513	W27	L1	W26	W15	3
6 Kuhn, Keith R.	1667	D24	W28	D11	W14	3
7 Ranck, Donald E.	1405	L4	W27	W16	W12	3
8 Kassala, Gerald F.	1636	W17	D20	L3	W19	2½
9 Skell, Charles	1519	W14	D4	L2	W22	2½
10 Morgan, James S.	1327	W26	D24	W20	L3	2½
11 Fritz, James J.	1384	W16	D3	D6	L4	2
12 Devereaux, John P.	1651	W19	L2	W23	L7	2
13 Schwartz, Harold Jr.	1597	W23	W22	L1	---	2
14 Robbins, Stevens J.	Unr	L9	W21	W22	L6	2
15 Ober, Ivan G.	Unr	L20	W17	W24	L5	2
16 Gingerich, Mark A.	New	L11	W29	L7	W23	2
17 Koloski, Daniel J.	1294	L8	L15	W30	W25	2
18 Faust, Glen A.	New	L22	L23	Bye	W29	2
19 Simon, Joseph A.	1333	L12	W25	D4	L8	1½
20 Morris, Geoffrey	1329	W15	D8	L10	-	1½
21 Tyson, Bert J.	1330	D28	L14	W27	-	1½

1979 ALLENTOWN CHESS CLUB CHAMPIONSHIPS

May 4 - June 6, 1979

Player	RTNG	Rd1	Rd2	Rd3	Rd4	Rd5	TOT
1 Bruce Albertson	2094	W10	W7	W3	W4	W5	5
2 Thomas Roth	1500	W4	L10	W11	W9	W3	4
3 Jack Mangilutz	1828	W11	W6	L1	W8	L2	3
4 Robert Esch	1774	L2	W9	W8	L1	W11F	3
5 Greg Bielecki	1625	W12	L8	W10	W6	L1	3
6 Dave Bealer	1499	W15	L3	W13	L5	W9	3
7 Dennis Kuhns	1591	W13	L1	L9	W12	D8	2½
8 Seymour Mark	1470	W16	W5	L4	L3	D7	2½
9 Charles Woodrow	1398	W14	L4	W7	L2	L6	2
10 Edward Weiss	1347	L1	W2	L5	W14	L13	2
11 Howard Trimpi	1326	L3	W14	L2	W13	L4F	2
12 Owen Jones	1112	L5	L13	W16F	L7	W14	2
13 Fred Kurraach	1047	L7	W12	L6	L11	W10	2
14 Matt Skosma	Unr	L9	L11	W15FLC	L12	1	1
15 Matt Breidenhall	1007	L6	-	L14F	-	-	0
16 Steve Potzshnick	Unr	L8	-	L12F	-	-	0

C3 END-OF-SCHOOL YEAR #5

Philadelphia, Pa.	June 13, 79	
1 Speakman, Len	1165	L5 W2 1
2 Zachwieja, Steve	1084	L6 L1 0
3 Grobman, Mitch	711	W4 W5 L6 2
4 Cohen, Mike	496	L3 L6 L5 0
5 Neal, Michael	New	W1 L3 W4 W6 W7 4
6 Thompson, Greg	New	W2 W4 W3 L5 3
7 Ira Lee Riddle	1113	- L5 0

HOW TO ANNOY YOUR OPPONENT

by Bill Wall

In Chess, winning isn't everything. It is the only thing! Chessplayers can't stand losing a game of chess. Therefore, it is necessary to know how to win easily without just mastering the difficult task of making good moves. The art of annoying your opponent is a must for those who don't have the time nor patience of playing a good game.

The easiest and most common form of annoying the opponent is talking. Several methods can be adopted.

One method is to talk to your opponent, pointing out his bad moves or telling him that his position is a forced loss. If your opponent is about to make a good move yell out "touch move" just before he touches the piece. Of course, he will deny that he touched anything. An argument will result and this will upset your opponent so much that he will have forgotten his original plan and make a weaker move. Another method is to talk to spectators and spread rumors about your opponent. People will soon come by your opponent and snicker or point at him. This will make your opponent very uncomfortable and will take his mind off chess. You can also discuss the game or your opponents previous games and how bad they were. This will draw your opponent into the discussion with an argument. His mind will be completely off the game and will leave him thinking of his past losses and making weak moves.

Another method is to talk to yourself. Mumbling and even laughing at your opponent's moves will make him uncomfortable and distract him from making strong moves.

Another method of disturbance is to cough, sneeze, and blow your nose during the game. It will help to mention that you just had a highly contagious and often fatal disease and you think that it may be cured. This will distract the opponent and give him the fear of germs. If he thinks your disease is contagious he will leave the board often and not be able to concentrate on strong moves.

If your opponent is slow in moving, drum and tap your fingers and feet. You should heave a sigh, then yawn, look at the chess clock and your watch often, and finally groan. The opponent will start making hasty moves so as not to appear a slowpoke.

For those who like to rest your head on your hands, it is a good idea to keep the elbows constantly on the edge of the board so as to conceal a few pieces.

When you exchange pieces, always put one or two pieces on your lap or out of the way. If your opponent likes to compare exchanged pieces off the board, he will think he is winning and ease up.

The best way of annoyance, however, is to make a strong move! That will get them everytime.



I.C.I. CLASSIC

Atlanta, Ga.
April 7-8

Player	RTNG	Rd1	Rd2	Rd3	Rd4	Rd5	TOT
1 Murthy, P.L.N.	2119	W48	W14	D22	W21	W8	44
2 Algeo, Tom	2151	W31	D42	W26	W22	W3	44
3 Robinson, Henry	2037	W26	W13	W5	W4	L2	4
4 Kolvick, Randy	2064	W37	W15	W11	L3	W14	4
5 Simmons, John	1860	W32	W25	L3	W23	W12	4
6 Spurrer, Robert	1669	L8	W29	W45	W15	W11	4
7 Vest, David	1889	L23	W36	W12	W25	W13	4
8 Bert, Allison	1972	W6	W16	D21	W9	L1	3 1/2
9 Morrison, J. Earle	1714	W38	D10	W24	L8	W21	3 1/2
10 Whiteman, Stephen	1828	W44	D9	L31	W39	W17	3 1/2
11 Dickerson, Leonard	1820	W33	W51	L4	W18	L6	3
12 Lorentson, David	1764	W20	W41	L7	W32	L5	3
13 Felts, Ed.	1762	W47	L3	W27	W30	L7	3
14 Likens, Rick	1798	W49	L1	W44	W31	L4	3
15 Jurjevich, Charles	1769	W17	L4	W33	L6	W23	3
16 Smith, Jr., John W.	1727	W29	L8	W20	L17	W33	3
17 Cox, Nicholas	1521	L15	W37	W35	W16	L10	3
18 Igou, Rick	1696	L41	W47	W19	L11	W38	3
19 Hamilton, O. Al.	1871	D36	D23	L18	W24	W32	3
20 Lawler, James E.	1364	L12	W6	L16	W7	W30	3
21 Wright, Bruce	1806	W27	W30	D8	L1	L9	2 1/2
22 Scott, Joe	1888	W40	W35	D1	L2	-	2 1/2
23 Brookshear, Tim	1639	W7	D19	W39	L5	L15	2 1/2
24 Mullis, Don	1716	W28	D39	L9	L19	W34	2 1/2
25 Bacon, Mike	1720	W46	L5	W43	L7	D27	2 1/2
26 Todd, Alan	1702	L3	W49	L2	W43	D28	2 1/2
27 Cobb, Jeffrey R.	1551	L21	W48	L13	W42	D25	2 1/2
28 Jones, Walter	1452	L24	L33	W49	W44	D26	2 1/2
29 Kinsler, Winatton	1467	L16	L6	D48	W40	W39	2 1/2
30 Banks, Marvin D.	1639	W45	L21	W41	L13	L20	2
31 Wall, Bill	1714	L2	W50	W10	L14	-	2
32 Choctie, Steve	1565	L5	W46	W42	L12	L19	2
33 Wilke, John	1555	L11	W28	L15	W35	L16	2
34 Barber, Jim	1550	D42	L45	D36	W37	L18	2
35 Fowler, Mark	1748	W43	L22	L17	L33	W44	2
36 Jurjevich, John	1631	D19	L7	D34	L38	W46	2
37 Southerland, Gary	1710	L4	L17	W47	L34	W43	2
38 Steward, Bill J.	1451	L9	L44	W6	W36	L18	2
39 Martin, Jr. Ulysses	1830	W51	D24	L23	L10	L29	1 1/2
40 McGuire, Ray	1636	L22	L43	D46	L29	Bye	1 1/2
41 Sides, Ben	2000	W18	L12	L30	-	-	1
42 Biesiada, Keith	1798	D34	D2	L32	L27	-	1
43 Roberts, John J.	1484	L35	W40	L25	L26	L37	1
44 Barrero, Alejandro	1556	L10	W38	L14	L28	L35	1
45 Schultz, Don	1892	L30	W34	L6	-	-	1
46 Campfield, Allan D.	1463	L25	L32	D40	D49	L36	1
47 Baker, Mark	1510	L13	L18	L37	W52	-	1
48 Pressley, James	1710	L1	L27	D29	LF	-	1/2
49 Foust, Michael	1541	L14	L26	L28	D46	-	1/2
50 Sherman, Stan	1883	W31	L31	-	-	-	1/2
51 Seagle, Ken	1565	L39	L11	Withdraw	0	-	0
52 Powell, Larry	New	-	-	-	L47	-	0

RESERVE SECTION

1 Deter, Paul L.	Unr.	W8	D14	W26	W3	W2	4 1/2
2 Curran, Gerard L.	1384	W27	W31	W15	W6	L1	4
3 Bright, Tim	1311	W19	W22	W7	L1	W11	4
4 Deter, Tim	Unr.	W21	D26	W16	W14	D6	4
5 Johnson, Jr., James	1309	W33	W10	L6	W21	W9	4
6 Sheppard, Dallas	1392	W11	W20	W5	L2	D4	3 1/2
7 Dreesel, Fred	1106	W23	W9	L3	W16	D10	3 1/2
8 Hopkins, John	1174	L1	W33	D10	W27	W17	3 1/2
9 Fowler, John	1373	W35	L7	W19	W20	L5	3
10 Ingersoll, Randall	New	W17	L5	D8	W18	D7	3
11 Youngblood, Jay	1115	L6	W30	W23	W15	L3	3
12 Beall, IV, John	1392	W32	L15	-	W31	W20	3
13 White, John E.	1328	L31	W25	D27	D24	W21	3
14 Smith, Scott	1379	W25	D1	W18	L4	-	2 1/2
15 Ford, Julian B.	1278	W29	W12	L2	L11	D19	2 1/2
16 Floyd, Larry	1249	D24	W28	L4	L7	W22	2 1/2
17 Jeffers, Doug	1162	L10	D29	W24	W28	L8	2 1/2
18 Martin De Nicolas, Art		D28	W24	L14	L10	W29	2 1/2
19 Marsee, Darryl E.	972	L3	W36	L9	W23	D15	2 1/2
20 Berry, John T.	1256	W30	L6	W31	L9	L12	2
21 Williams, Phillip A.	1170	L4	W34	W22	L5	L13	2
22 Walker, Chris Drew	888	W36	L3	L21	W25	L16	2
23 Neill, David E.	1381	L7	W35	L11	L19	W30	2
24 Sealock, Charles	815	D16	L18	L17	D13	W34	2
25 Campfield, David B.	1082	L14	L13	W34	L22	W32	2
26 Dinges, Warren	1297	W34	D4	L1	-	-	1 1/2
27 Pansica, Kristyan	1107	L2	W32	D13	L8	-	1 1/2
28 Webb, Harvey B.	New	D18	L16	W29	L17	-	1 1/2
29 Edwards, Robert H.	899	L15	D17	L28	W32	L18	1 1/2
30 Bow, Bob D.	855	L20	L11	D35	W33	L23	1 1/2
31 Wall, Gerald Lee	988	W13	L2	L20	L12	-	1
32 Robertson, Dale	846	L12	L27	W33	L29	L25	1
33 Andrews, Wayne L.	945	L5	L8	L32	L30	W37	1
34 Bridges, Greg	938	L26	L21	L25	Bye	L24	1
35 Wilson, James	1005	L9	L23	D30	-	-	1/2
36 Radford, Ronald	1259	L22	L19	-	-	-	0
37 Powell, Larry	New	-	-	-	-	L33	0

SNYDER'S CHESS SERVICES

Greatly improve your chess with private lessons, having your games or positions analyzed or having a Simultaneous Exhibition or lecture at your local club. Positions Analyzed - \$3.00 per position. Game Analysis, Brief (for short games only) \$4.50 per game. Detailed \$9.00 per game. Enclose a self addressed and stamped envelope or extra \$.50. Also write for a free brochure on "CYBERCHESS" a chess playing machine (not a computer, but better!) which has a cost of only \$34.95. You will love it as both a teacher and substitute playing partner. Robert M. Snyder, 14282 Jessica St., Garden Grove, Ca. 92643. Phone 714-531-3643. Also Snyder Sicilian only \$2.00.

GEORGIA-SOUTH CAROLINA OPEN

Augusta, Ga.
April 21-22

Player	RTNG	Rd1	Rd2	Rd3	Rd4	Rd5	TOT
1 Algeo, Tom	2151	W7	W3	W2	W5	W4	5
2 Stevens, William T.	1659	W8	W6	L1	W4	W5	4
3 Taffinder, Jr. Doug	1710	W5	L1	L4	W8	D6	2 1/2
4 Edwards, Herbert	1631	D6	D7	W3	L2	L1	2
5 Pietras, Jon F.	1618	L3	W8	W6	L1	L2	2
6 Simmons, John	1860	D4	L2	L5	W7	D3	2
7 Jeffers, Brad	1635	L1	D4	L8	L6	Bye	1 1/2
8 Blaydes, Frank	1613	L2	L5	W7	L3	-	1

RESERVE SECTION

1 West, Jr., James E.	1467	W11	W9	D2	W3	W7	4 1/2
2 Keeper, Manuel	1444	W14	W4	D1	W9	L3	3 1/2
3 Abarno, Frank	1398	D8	W12	W7	L1	W2	3 1/2
4 Jones, Bob	Unr.	W13	L2	W11	D10	W8	3 1/2
5 Blanning, James S.	1451	W6	L7	L9	W13	W10	3
6 Hopkins, John N.	1174	L5	L13	W14	W11	W9	3
7 Hawthorne, Benjy	1113	Bye	W5	L3	D8	L1	2 1/2
8 Hampton, William	Unr.	D3	L10	W13	D7	L4	2 1/2
9 Bryant, Wesley	1256	W10	L1	W5	L2	L6	2
10 Williams, Michael	1459	L9	W8	W12	D4	L5	2
11 Ivey, George	1326	L1	W14	L4	L6	W12	2
12 Williams, Phillip	1170	W31	L3	L10	W7	LF	1 1/2
13 Dodgen, William H.	1387	L4	W6	L8	L5	-	1
14 Gill, Brendan	Unr.	L2	L11	L6	LF	-	0

DELAWARE VALLEY OPEN

Philadelphia, Penn.
Mar. 7-Apr. 4

1 Warhula, Joseph	2026	W13	W8F	W4	W6	L3	4
2 Martell, Joseph	1957	D14	W19	W5	L3	W9	3 1/2
3 Bogner, Harold	1941	W15	W10	L6	W2	W1	4
4 Kessler, Louis	1867	W16	W9	L1	L14	5*	4
5 Perri, Michael	1801	W17	D12	L2	W15	4*	4
6 Kamieniecki, Phil	1748	W18	W11	W3	L1	W10	4
7 McBride, John	1741	LF	-	-	-	-	0
8 Spiegol, C.	1661	W20	LF	W12	W11	L14	3
9 Netter, Steve	1658	W21	L4	W17	L10	L2	2
10 Estes, Tate	1652	W22	L3	W16	W9	L6	3
11 Plach, John	1588	W23	L6	W24	L8	W20	3
12 Kieslich, Joseph	1581	W24	D5	L8	D17	W19	3
13 Gondek, Marlon	1537	L1	D14	L18	W21	W17	2 1/2
14 Fry, R.	1500	D2	D13	L23	W4	W8	4
15 Russell, Frank	1481	L3	W20	L19	W5	L22	2
16 Carr, Allen	1422	L4	W21	L10	L20	D24	1 1/2
17 Singleton, Donald	1387	L5	W22	L9	D12	L13	1 1/2
18 Bussa, Paul	1385	L6	L24	W13	L22	W21	2
19 Billick, Paul	1281	W7F	L2	L15	W24	L12	2
20 Bogus, Howard	1264	L8	L15	W21	W10	L11	2
21 Harrison, Frank	1227	L9	L16	L20	LF	W18	1
22 Plostrom, Glenn	1215	L10	L17	Bye	W18	W15	3
23 Gilsone, Steve	1125	L11	Bye	L14	-	-	1
24 Jones, D	Unr.	L12	W18	L11	L19	D16	1 1/2

* Game adjourned

ANNUAL ALLENTOWN JR. CHESS CHAMPIONSHIP

Player	Rd1	Rd2	Rd3	Rd4	Rd5	Rd6	TOT
1 Stengle, Dave	W24	W15	W11	W14	W2	W3	6
2 Roth, Tom	W25	W28	W4	W6	L1	W7	5
3 Call, Chris	W20	W16	W24	D12	W15	L1	4
4 Trimpi, Richard	W22	W8	L2	D5	W13	W6	4
5 Browne, Mike	W27	W31	L14	D4	W9	W11	4
6 Bielecki, Greg	W37	W7	W12	L2	W8	L4	4
7 Borek, Greg	L35	L6	W19	W10	W14	L2	4
8 Anselmin, Joe	L21	L4	W25	W11	L6	W17	4
9 Kurraach, Fred	W16	W20	W31	W23	L5	W14	4
10 Ganey, Tim	L32	L12	W22	L7	W25	W18	4
11 Smits, Mike	W18	W19	L1	D13	W12	L5	3
12 Locke, Dave	W17	W10	L6	D13	L11	W22	3
13 Knauss, Chuck	L30	L14	W28	D11	L4	W15	3
14 Gaal, Mark	W32	W13	W5	L1	L7	L9	3
15 Keller, Glenn	L29	L1	W27	W17	L3	L13	3
16 Leach, Dave	L9	L3	WF	L8	L18	W26	3
17 Schleicher, Ken	W12	W21	W26	L15	W24	L8	3
18 Wilson, Ed	L11	L24	W34	W20	W16	L10	3
19 Archer, Stan	L23	L11	L7	W26	D22	W25	3
20 Mazza, Tom	L3	L9	W29	L18	W23	W27	3
21 Ehret, Marc	L8	L17	L23	W8	W28	W24	3
22 Munsch, Jim	L4	W29	L10	W28	D19	L12	2
23 Avitzor, Ron	D19	L25	W21	L9	L20	W30	2
24 Nemeth, Larry	L1	W18	L3	W27	L17	L21	2
25 Tomasko, Ron	L2	W23	L8	WF	L10	L19	2
26 Walton, Wayne	L10	W35	L17	L19	W29	L16	2
27 Karapalou, M.	L5	W36	L15	L24	W33	L20	2
28 Menges, Robert	W34	L2	L13	L22	L21	W33	2
29 Paximadas, Greg	L15	L22	L20	W35	L26	W34	2
30 Skoma, Matthew	L13	L32	D39	L21	W35	L23	1
31 Dye, David	W36	L5	L9	LF	Withdraw	-	1
32 Steckel, Frank	L14	W30	LF	Withdraw	-	-	1
33 Cullimore, John	-	-	-	W34	L27	L28	1
34 Chen, Steven	L28	L38	L18	L33	Bye	L29	1
35 Chen, Lynn	L7	L26	L38	L29	L30	Bye	1
36 Bennicoff, Ken	L31	L27	Withdraw	-	-	-	0
37 Schaffer, Scott	LF6	Withdraw	-	-	-	-	0
38 Designated player 1	-	-	W34	W35	-	-	2
39 Designated player 2	-	-	-	D30	-	-	2

High School Section continued									
Player	RTNG	Rd1	Rd2	Rd3	Rd4	Rd5	TOT		
30 Katz, Steve	Unr.	L9	D41	L42	L7	-	1		
31 Kissling, Mark	New	L10	D42	L34	-	-	1		
32 Kranzel, Jerome	New	L11	L44	W40	W20	W46	3		
33 McElheny, Bob	Unr.	L13	W45	W17	L21	W10	3		
34 Maurer, Gerhardt	New	L14	D7	W31	L41	L38	1 1/2		
35 Mihalakis, Pete	New	L15	L8	W45	W26	D17	2 1/2		
36 Rule, Jeff	Unr.	L12	W22	W20	L3	W29	3		
37 Sedoff, David	New	L16	W23	L24	-	-	1		
38 Simons, Derrick	New	L17	L24	L23	L45	W34	1		
39 Smith, Steve	New	L18	L25	L22	-	-	0		
40 Werner, Craig	New	L19	L26	L32	-	-	0		
41 Van Arsdale, Dave	Unr.	L21	D30	W7	W34	W15	3 1/2		
42 Rimmer, Todd	1084	L20	D31	W30	L15	L7	1 1/2		
43 Martinez, Carlos	New	W44	L14	L25	L8	-	1		
44 Hendricks, Methun	New	L43	W32	W26	L6	L24	2		
45 Jones, Clifton	New	L46	L33	L35	W38	D23	1 1/2		
46 Manley, James	New	W45	L6	L27	W11	L32	2		

1 Shippensburg
2 Manheim
3 Central (Phila.)
4 Franklin (Phila.)

Jr. High School Section									
Player	RTNG	Rd1	Rd2	Rd3	Rd4	Rd5	TOT		
1 Kinsler, George	1764	W16	W9	L4	W28	W3	4		
2 Daniels, Howard	1684	W17	W10	W5	L4	L7	3		
3 Jiles, Kevin	1370	W18	W11	W17	L6	L1	3		
4 Green, Ben	1351	W19	W12	W1	W2	W6	5		
5 Graham, George	1348	W20	W31	L2	W8	W27	4		
6 Caramichael, Anthony	1272	D21	W29	W9	W3	L4	3 1/2		
7 Daskus, Leonard	1233	W22	W15	L3	W11	W2	4		
8 Jiles, Steven	1203	W23	W20	D28	L5	W26	3 1/2		
9 England, Eric	1142	W27	L1	L6	W12	L17	2		
10 Rivera, James	1139	W24	L2	L17	W15	W12	3		
11 Ost, Ed	1091	W25	L3	W24	L7	D32	2 1/2		
12 Ost, Dave	1004	W26	L4	L14	L9	L10	1		
13 Schroeder, Roland	982	L28	L24	W23	L16	W22	2		
14 Simon, Rodney	958	L29	W21	W12	D26	L16	2 1/2		
15 Wade, Mike	823	W30	L7	L27	L10	W24	3		
16 Allen, Michael	822	L1	W23	L29	W13	W14	3		
17 Leftwich, Andre	729	L2	W25	W10	W27	W19	4		
18 Jones, Wanda	514	L3	L27	L25	L20	L23	0		
19 Cohen, Mike	496	L4	W30	L26	D25	L31	1 1/2		
20 Jackson, Daniel	500	L5	L8	D32	W18	W25	2 1/2		
21 Robinson, Rendell	Unr	D6	L14	L31	L32	D30	1		
22 Root, Brad	New	L7	L26	L30	W23	L13	1		
23 Fuller, Darren	New	L8	L16	L13	L22	W18	1		
24 Querry, Mike	Unr	L10	W13	L11	W30	W15	3		
25 Driscoll, Andrew	Unr	L11	L17	W18	D19	L20	1 1/2		
26 Groff, Matt	Unr	L12	W22	W19	D14	L8	2 1/2		
27 Gaines, William B.	Unr	L9	W18	W15	L17	L5	2		
28 Kase, Aaron	Unr	W13	W32	D8	L1	L29	2 1/2		
29 Lewis, Richard	Unr	W14	L6	W16	W31	W28	4		
30 Stevens, Nick	Unr	L15	L19	W22	L24	D21	1 1/2		
31 Lowry, Keith	466	D32	L5	W21	L29	W19	2 1/2		
32 Longstrett, Rod	Unr	D31	L28	D20	W21	D11	2 1/2		

ELEM-PRIM. SECTION									
Player	RTNG	Rd1	Rd2	Rd3	Rd4	Rd5	TOT		
1 Jiles, Tim	1136	W15	W7	D4	W3	W24	4 1/2		
2 Moore, Jeff	1089	W16	W8	D6	W4	W3	4 1/2		
3 Funk, Eric	1036	W17	W9	W13	L1	L2	3		
4 Green, Alvin	1030	W18	W12	D1	L2	W9	3 1/2		
5 Sanders, Ron	913	W19	L13	W14	D6	W7	3 1/2		
6 Willis, Darlene	846	W20	W25	D2	D3	W8	4		
7 Lewis, Daniel	723	W21	L1	D20	W27	L5	2 1/2		
8 Andrews, Gerald	665	W22	L2	W23	W13	L6	3		
9 Moore, Alfred	665	W23	L3	W22	W16	L4	3		
10 Jackson, Henry	515	L24	D27	D26	L21	D22	1 1/2		
11 Anderson, Leslie	460	L25	W19	L24	D26	L27	1 1/2		
12 Smith, Dwayne	410	W26	L4	W25	L24	W20	3		
13 Westbrook, Anthony	370	Bye	W5	L3	L8	W21	3		
14 Poole, Ronnell	253	D27	L24	L5	L20	W19	1 1/2		
15 Johnson, Lori	New	L1	W21	L27	W22	L23	2		
16 Graham, Darren	New	L2	L22	W18	L9	L25	1		
17 Hallager, Kevin	New	L3	L23	W19	W25	W26	3		
18 Rambert, Donald	New	L4	L26	L16	L23	Bye	1		
19 Graham, Maurice	New	L5	L11	L17	Bye	L14	1		
20 Conway, Derrick	Unr	L6	-	D7	W14	W12	2 1/2		
21 Shillingford, Frank	New	L7	L15	Bye	W10	L13	2		
22 Shillingford, Kathy	New	L8	W16	L9	L15	D10	1 1/2		
23 Seawright, Reginald	572	L9	W17	L5	L18	W15	2		
24 DeFlorio, Britt	Unr	W10	W14	W11	W12	L1	4		
25 Bell, Kim	509	W11	L6	L12	L17	W16	2		
26 Wroten, Eric	New	L12	W18	D10	D11	L17	2		
27 McCollum, Jeff	663	D14	D10	D15	L7	W11	2 1/2		

PSCF CONCERNED BLACK MEN'S #6									
Player	RTNG	Rd1	Rd2	Rd3	Rd4	Rd5	TOT		
1 Bergaman, R. Paul	1300	W5	L3	W6	-	-	2		
2 Fields, Varn	1280	W6	L4	W7	-	-	2		
3 Minus, Donald	1274	W7	W1	W4	-	-	3		
4 DiMalanta, Mark	1080	W8	W2	L3	-	-	2		
5 Brooks, Leon	1058	L1	L7	W8	-	-	1		
6 Sigmond, Larry	Unr	L2	W8	L1	-	-	1		
7 Mitchell, Greg	910	L3	W5	L2	-	-	1		
8 Randall, Maceo	861	L4	L6	L5	-	-	0		

PSCF CONCERNED BLACK MEN'S #6									
Player	RTNG	Rd1	Rd2	Rd3	Rd4	Rd5	TOT		
1 Atkinson, William	2129	W6	W3	W2	-	-	3		
2 Gist, Robert	1998	W7	W9	L1	-	-	2		
3 Cardamone, Jim	1976	W8	L1	W6	-	-	2		
4 Daskus, Richard	1727	L9	W10	L5	-	-	1		

Player	RTNG	Rd1	Rd2	Rd3	Rd4	Rd5	TOT		
5 Abney, Willie	1719	L10	L7F	W4	-	-	1		
6 Curtiss, James	1497	L1	W8	L3	-	-	1		
7 Gooding, Carl	1482	L2	L5F	W8F	-	-	1		
8 Rocker, Greg	1355	L3	L6	L7F	-	-	0		
9 Bogus, Howard	1311	W4	L2	L10	-	-	1		
10 Sigmond, Robert	1168	W5	L4	W9	-	-	2		

NORTH CAROLINA SCHOLASTIC CHAMPIONSHIPS

1	Nathan Hunt	1623	W28	W15	W11	W6	W2	5	
2	Bennie Roberts	1617	W29	W16	W10	W8	L1	4	
3	Arnold Tharrington	1413	W30	W19	W12	W4	W5	5	
4	Warren Johnson	1357	W31	W17	W13	L3	L21	3	
5	John Kahl	1311	W50	L22	W35	W23	L3	3	
6	Newton Prince	1269	W32	W21	W22	L1	W19	4	
7	Quenton Macon	1265	W33	L23	W32	W20	W13	4	
8	Milton Fields	1234	W34	W24	W14	L2	L22	3	
9	Aubrey Martin	1205	W35	W27	L23	L21	W30	3	
10	James Auscuse	1168	W36	W47	L2	L22	W35	3	
11	Jeff Stout	1168	W37	W45	L1	W29	W23	4	
12	Mohamad Afify	1143	W39	W38	L3	W36	W54	4	
13	Branson Sheets	1118	W40	W54	L4	W38	L7	3	
14	Tommy Howell	1078	W46	W53	L8	D40	D47	3	
15	Leslie Queen	1060	W42	L1	L36	D33	W53	2½	
16	Denis Cox	1057	W43	L2	W37	D47	D40	3	
17	Alan Patrick	1051	W44	L4	L38	W32	W36	3	
18	Steve Uhl	1037	L19	W39	W45	L54	W38	3	
19	Robert Short	1021	W18	L3	W43	W49	L6	3	
20	Shu-Ming Peng	1016	L47	W41	W48	L7	W39	3	
21	David Cheng	977	W48	L6	W46	W9	W4	4	
22	Charles Gunther	966	W49	W5	L6	W10	W8	4	
23	Barry Latta	947	W31	W7	W9	L5	L11	3	
24	Jeff Muldrow	934	W52	L8	L49	D37	W28	2½	
25	Mark Hartsell	861	L53	L43	W44	L32	W42	2	
26	Edward Shearin	815	L54	W42	L47	L35	W41	2	
27	Tommy Weldon	785	W55	L9	L54	W41	L43	2	
28	Joseph Hughes	731	L1	L40	W52	D48	L24	1½	
29	Brent Seifert	699	L2	W44	W53	L11	L49	2	
30	Larry Hogge	688	L3	L48	W42	W46	L9	2	
31	William Coleman	680	L4	L46	W51	L43	L37	1	
32	Tony Adcock	649	L6	W50	L7	L17	L45	1	
33	Johnie Beasley	610	L7	L49	Bye	D15	L48	1½	
34	Robert Yates	583	L8	D52	L40	L42	L46	1½	
35	Brian Lee	578	L9	W51	L5	W26	L10	2	
36	Dan Fuller	554	L10	W55	W15	L12	L17	2	
37	Sean McKee	503	L11	Bye	L16	D24	W31	2½	
38	James Branch	501	Bye	L12	W17	L13	L18	2	
39	John Bordonaro	Unr	L11	L18	W50	W25	L20	2	
40	Albert Boyers	Unr	L31	W28	W34	D14	D16	3	
41	Tim Bullock	Unr	L45	L20	W55	L27	L26	1	
42	Ezra Cannon	Unr	L15	L26	L30	W34	L25	1	
43	Francis Carr	Unr	L16	W25	L19	W31	W27	3	
44	Sandra Collins	Unr	L17	L29	L25	L51	L50	0	
45	Hal Davis	Unr	W41	L11	L18	-	W32	2	
46	Tim Davies	Unr	L14	W31	L21	L30	W34	2	
47	Brian Gurley	Unr	W20	L10	W26	D16	D14	3	
48	Tim Hamilton	Unr	L21	W30	L20	D28	W33	2½	
49	Marc Ilgen	Unr	L22	W33	W24	L19	W29	3	
50	Christine Dugan	Unr	L5	L32	L39	L55	W44	1	
51	Cecil Robertson	Unr	L23	L35	L31	W44	Bye	2	
52	Gerald Robertson	Unr	L24	D34	L28	L53	W55	1½	
53	Carroll Smith	Unr	W25	L14	L29	W52	L15	2	
54	Robert Stewart	Unr	W26	L13	W27	W18	L12	2	
55	Gus Tucker	Unr	L27	L36	L41	W50	L52	1	

Player													Player													Player												
RTNG Rd1 Rd2 Rd3 Rd4 Rd5 TOT													RTNG Rd1 Rd2 Rd3 Rd4 Rd5 TOT													RTNG Rd1 Rd2 Rd3 Rd4 Rd5 TOT												
7 Fred Chosmet													Unr L20 W17 W24 L5													23 Jesse J. Ellis												
8 Phillip Williams													Unr L11 W29 L7 W23													24 Christopher M. Nadeskay												
9 Steve Valdez													1294 L8 L15 W30 W25													25 Billy Morris												
10 Joseph Kobieur													Unr L22 L23 Bye W29																									
11 David Bybee													1333 L12 W25 D4 L8																									
													1329 W15 D8 L10																									
													1330 D28 L14 W27																									
																										SOUTH ARKANSAS OPEN												
ATLANTA SPRING OPEN													PSCF-ORRIE'S PERM PALACE #1													Camden, Ar.												
April 28-29													June 2-3 1979													June 16-17, 79												
OPEN SECTION																																						
1 Tom Algeo													Philadelphia, Pa.													1 Gray, Donny												
2 David Vest													1 Costigan, Tom													2 Parsons, Vince												
3 Emory Tate													2 Atkinson, William													3 Wells, Phillip P												
4 Don Schultz													3 Smith, Arthur													4 Nunnally, Bob												
5 Ernesto Rodriguez													4 Bogner, Harold													5 Niggel, Chuck												
6 Ronald Nettles													5 Lee, Timothy													6 Nunnally, Bruce												
7 Keith Biesiada													6 Szendroi, Robert													7 Garner, Tim D.												
8 Rick Likens													7 Dozorats, Anatoly													8 Lehigh, Jeffery												
9 Bob Stern													8 Mitchell, Arthur													9 Armstrong, Dale												
10 Alex Rodger													9 Ryum													10 Hines, Frank												
11 P.L.N. Murthy													10 Lane, Paul													11 Griffith, Sam												
12 Mike Bacon													11 Poxon, Michael													12 Jones, Ralph												
13 Joe Scott													12 Perri, Michael													13 Lehigh, Charles												
													13 Renna Jr., Anthony													14 Williams, J.												
													14 Forman, Robin													15 Clinton, Michael												
													15 Thompson, Don													16 Patterson, Daniel												
													16 Thompson, Bruce													17 Butterfield, Andy												
													17 Homer, Jeremy													18 Jackson, Allen												
													18 Smith, Charles																									
													19 Trueman, William																									
													20 Davis, Ricardo																									
													21 Spiegel, Charles																									
													22 Ladson, Preston																									
													23 Witte, Robert																									
													24 Byrd, Jerome																									
													25 Gardella, Ed																									
													26 Banks, George																									
													27 DeBrady, Christophe																									
													28 Fry, Ronald																									
													29 Gooding, Carl																									
													30 Marmostein, Harold																									
													31 Carl																									
													32 Strube, Thomas																									
													33 Grimes, Wendell																									
													34 McCowan, Jeffrey																									
													35 Streeter, Wallace																									
													36 Rocker, Greg																									
													37 Bogus, Howard																									
													38 Minus, Donald																									
													39 Greissman, Adam																									
													40 Donaldson, James																									
													41 Ost, Ed																									
													42 Moore, Jeffrey																									
													43 Kinsler, Thomas																									
													44 DiMalanta, Mark																									
													45 Brooks, Leon																									
													46 Ost, Dave																									
													47 Ellis, Errol																									
													48 Randall, Maceo																									
													49 Lewis, Richard																									
													50 Buono, Ron																									
													51 Van Arsdale, David																									
													52 Kase, Aaron																									
													53 Nealy, Levy																									
													54 Stevens, Douglas																									
													55 Sukienik, Leopold																									
													56 Gist, Robert																									
													57 Washington, John																									
													58 Rogers, Norman																									
													59 Starks, Paul																									
																										PEACH STATE CLASS CHAMPIONSHIPS												
																										June 16-17, 79												
																										1 Simmons, John												
																										2 Schultz, Donald												
																										3 Vermilya, James W.												
																										4 Wheeler, Jerry												
																										5 Hamilton, O. Al.												
																										6 Coles, Mark E.												
																										7 Vest, David												
																										8 Scott, Joseph												
																										9 Hunt, Steven												
																										CLASS B												
																										1 Stevens, Jr., William												
																										2 Jurjevich, John												
																										3 Carpenter, Richard												
																										4 Brookshear, Timothy												
																										5 Bacon, William												
																										6 Jurjevich, Charles												
																										7 Mullis, Don												
																										8 Banks, Marvin David												
																										9 McCarthy, Brian												
																										10 Schneider, Jay												
																										CLASS C-D												
																										1 Kayma, Tom												
																										2 Jackson, Jim												
																										3 Bright, James Timothy												
																										4 Gee, Jeff												
																										5 Campfield, Allan D.												
																										6 Shaw, Ronnel												
																										7 Cox, Nicholas												
																										8 Bryant, Wesley												
																										9 Dennett, Mark E.												
																										10 Powell, Larry												
																										11 Radford, Ronald												
																										12 Hathcock, Bernard												
																										CLASS E-Unr.												
																										1 Campfield, David												
																										2 Walker, Chris Drew												
																										3 Sealock, Charles												
																										4 Spivey, James M												
																										5 Mitchell, Steve												
																										6 Fanstall, Kurt												
																										7 Quinn, Michael												
																										ATLANTA SUMMER SCHOLASTICS												
																										Unr W11 W2 D4 W5												
																										2 Robinson, Bill												
																										3 Robinson, Cheves												
																										4 Bell, Kerry												
																										5 Higga, Bruce												
																										6 Welch, Todd												
																										7 Hlepp, Ricky												
																										8 Symbas, Peter												
																										9 Alexander, Mark												
																										10 Marks, Miles												
																										11 Coles, Becky												
																										I.C.I. JUNE QUADS												
																										1 Ruiz, William												
																										2 Lucas, Michael T.												
																										3 Lee, David V.												
																										4 Tanner, David A.												
																										1 Banks, Marvin												
																										2 Debejar, Roderick												
																										3 Cox, Nicholas												
																										4 Bassett, Bob												
																										1 Raglin, Bruce K.												
																										2 Gillooly, Jack												
																										3 Kirwan, Michael												
																										4 Castro, Arnold												
																										1 Friedel, Tommy												
																										2 McFarland, Marion												
																										3 Brandt, Art												
																										4 Powell, Larry												
																										LANSDALE OPEN												
																										May 1979												
																										1 Rind Bruce L.												
																										2 Kats, Michael Z.												
																										3 Baluk Dennis M.												
																										4 Fisher Mark E.												
																										5 Price Arthur H.												
																										6 Jaeger David L.												
																										7 Hathaway John F.												
																										8 Bendix Juergen												
																										9 Stevens Gary C.												
																										10 Oliver David C.												
																										11 Frederick Steven												
																										12 Lovatt James S.												
																										13 Sharp, Homer												
																										14 Fisher John S.												
																										15 Templin Raymond												
																										LITTLE ROCK OPEN												
																										May 26, 1979												
																										1 Larry Petroff												
																										2 Roger Q. Martin, Jr.												
																										3 Vince Parsons												
																										4 Don W. Marcott												
																										5 Gary E. Weeks												
																										6 Charles Davis												
																										7 Maheed Nahas												
																										8 Stan Rappaport												
																										RESERVE SECTION												
																										1 Michael R. West												
																										2 Conrado Mapili												
																										3 Craig Kozel												
																										4 Bruce W. Nunnally												
																										5 Brent Strandridge												
																										6 Tim Garner												
																										7 Sammie Jenkins												
																										8 Michael Clingan												
																										9 Garry Tillotson												
																										10 Nathan McKinney												
																										11 Clyde E. Scott												
																										12 Andy Secuzan												
																										13 Chuck Niggel												
																										14 Bob Nunnally, Jr.												
																										15 Travis I. Ellis												
																										16 Leoncio Guinigundo												
																										17 Michael J. Smith												
																										18 William Duke												
																										19 Richard A. Carter												
																										20 Royce W. Carter												
																										21 Randall L. Haynes												
																										22 Philip R. Embry												
																										PENN STATE WINTER TORNAO #2												
																										(1799 and under)												
																										1 Ordo, Joseph												
																										2 Glockner, Alexander J.												
																										3 McFarland, Randall C.												
																										4 Hreniuk, Stan												
																										5 Soveroeki, Robert												
																										6 Kuhn, Keith R.												
																										7 Ranck, Donald E.												
																										8 Kassala, Gerald F.												
																										9 Stell, Charles												
																										10 Morgan, James S.												
																										11 Fritz, James J.												
																										12 Devereaux, John P.												
																										13 Schwartz, Harold Jr.												
																										14 Robbins, Stevens J.												

NOTICES

SCHOLASTIC CHESS

(Pa.)

The PSCF committee on scholastic chess is looking for a site for the scholastic championships in early April 1980. Anyone interested in submitting a bid for hosting the event should contact the committee chairman - Joe Ohler, 236 W. Main St., Waynesboro, Pa. 17268.

The committee would also like to hear from any organized school clubs or leagues within the state.

FLORIDA CHALLENGED at State Championship

(Fl.)

Do you really believe that there are more Chessmen, state memberships in Georgia?

SOMETHING TO WHET YOUR APPETITE: Sunday, Sept. 2nd During our State Championships there will be offered a **BUFFET LUNCHEON** for all, with choices for adults and juniors. Some of the entrees will include potato salad, macaroni salad, oven brown potatoes, buttered peas, etc. with desserts. **BAD NEWS**--\$5.95. **GOOD NEWS**--FCA pays \$1.00. Your advance price only \$5.00. Father "Jo" Johansen to give invocation.

SEE YOU AT THE STATE!!!
GILL & FLO CANTRELL

REGIONAL EDITORS APPOINTED

(SC)

South Carolina has appointed four regional editors to lighten the work load on the editor. They are as follows:

Northern SC: Mr. Marvin S. Chappell, Jr., Rt. 5
Box 260, Rock Hill, SC 29730.
Coastal SC: Mr. James West, 8340 Witsell St.,
Charleston Heights, SC 29405.
Columbia Area: Mr. Don Lemaster, 1471 Pine St.,
West Columbia, SC 29169.
Aiken-Augusta Area: Dr. M. Lee Hyder, SCCA Editor, 33
Longwood Dr., Aiken, SC 29801.

CLEARINGHOUSE REPORT

TOURNAMENT CLEARING-HOUSE COORDINATOR APPOINTED (SC)

Don Lemaster (Name and address given above-Ed) will be the SC Tournament clearing-house Coordinator. Tournament announcements should be sent to him rather than an editor, Don will then send them on to The Chessman. Lee Hyder.

TOURNAMENT SCHEDULE

(Pa.)

July 9-18 Philadelphia International
July 15 Williamsport Cast Tornado
July 21-22 6th Alleghany Chess Congress, Pittsburgh
July 28 Quads at Awbury Rec. Center, Phila.
Aug. 4-5 Phila. August Open
Aug. 18-19 Wilkes-Barre Open
Sept. 1-3 Pa. State Championships, Folsom
Sept. 22-23 CCA Grand Prix in Phila.
Sept. 29-30 9th Annual Hatboro Open
Oct. 13-14 Allentown Tournament-Tentative.
Oct. 20-21 PSCF-Orrie's Perm Palace #2, Philly
Nov. 18th PSCF-Orrie's Perm Palace #3, Philly
Nov. 24th Swiss Team Tournament, Warminster

In the past week, alone, I've been able to avoid two conflicts by being at clubs and having been told of other tournaments. These are ones that are not yet in CL&R plus ones I know of.

If you would like me to put out such a list as this every month or so, please send me a few self-addressed envelopes and I'll be happy to do so. This is one function that the PSCF can offer, in addition to regional clearinghouses. Also, please send copies of crosstables to me for publication, along with any games felt worthy.

Additionally, if you need a tournament director, I am willing to help out given enough lead time to plan my schedule. There is also a non-rated tournament or three I know about, but I will not list those.

Again, if the state organization can be of any help, please let me know.

Ira Lee Riddle

Tournament Reports

JACKSONVILLE CLASSIC

by Ed Butler

We had 71 entry's and 70 played. We had a strong top section as you can see (See crosstable on pg.). The gas shortage held us down even though we didn't have one here.

On Friday before the tournament John Fedorowicz played only a 19 board simultaneous. Bisguier had to withdraw.

There were, because of ties, 22 winners of cash prizes. Seven of them were Jacksonville Chess Club Members.

Bob Turrill was overall TD assisted by Thad Rogers.

1979 FLORIDA STATE CHAMPIONSHIPS

SEPTEMBER 1, 2 & 3

Six Round Swiss System in 4 Sections

Princess Martha Hotel
First Ave. N. at Fourth St.
St. Petersburg, FL 33731

\$1700 GUARANTEED CASH PRIZE

OPEN:

Entry Fee:
Cash Guaranteed:
Class Prizes:

ALL

\$25 if rec'd by 8/27
\$350-first; \$150-second; \$100-third
Expert: \$100-first; \$50-second; Top A
\$75-first; \$50-second; B & below: \$50-
first; \$25-second

Trophies:
Membership:
Time Control:

Top three in Open, Amateur & Reserve ONLY
USCF & FCA
40/2

AMATEUR:

Entry Fee:
Cash Guaranteed:
Class Prizes:
Membership:
Time Control:

Below 1850 or unrated
\$20, if rec'd by 8/27
\$200-first; \$125-second; \$75-third
B: \$60; C & below \$40
USCF & FCA
40/105 min.

RESERVE:

Entry Fee:
Cash Guaranteed:
Class Prizes:
Book Prizes:
Membership:
Time Control:

Below 1550 or unrated
\$15, if rec'd by 8/27
\$100-first; \$75-second; \$50-third;
\$25-fourth
D \$30; E \$20
to Plus Scores not receiving other prizes
USCF & FCA
40/105 min.

BEGINNERS #1

September 1, 1979

All receive:

Prizes:

Entry Fee:
Register:
Rounds:
Time Control:

NON-RATED BEGINNERS TOURNAMENT
4 ROUND SWISS
1200 & under, and unrated
Free FCA membership and Free Chess Book
upon entry
Plus Scores: receive Free Chess Book
Score of 3 or better: receives free
USCF memberships
\$10 advanced or at site
8-10 AM Sept. 1, 1979
12-2-4-7
30 moves/30 min.

BEGINNERS #2

September 3, 1979

Register:
Rounds:

ALL ELSE SAME AS ABOVE

NON-RATED BEGINNERS TOURNAMENT--
4 ROUND SWISS
9-10 AM Sept. 3, 1979
10-12-2-4

REGISTRATION:

ROUNDS:

ENTRIES:

Entry Fees:

HOTEL RATES:

SMOKING:

8-10 A.M. September 1, 1979
12-7; 11-6; 9-3

Frank Redway Jr., 817 5th Ave. N., St. Petersburg, FL 33701
\$3 more at site, WOMEN; No Entry Fee, except USCF & FCA Dues

\$16 Single; \$18 Double
There will be NONE in TOURNAMENT ROOM

BUFFET LUNCH
SUNDAY 4 PM
\$5.00

ANNUAL MEETING
to follow
5 PM SHARP

WOMEN
FREE ENTRY
FEE



MASTERS
FREE ROOM (\$16)
FOR FIRST FIVE
MASTERS TO
PRE-REGISTER



BONUS
Books to PLUS
SCORES in Reserve
& Beginners
from

CANTRELL'S CHESS BOOKS
4040 67th Avenue Ne.
Pinellas Park, FL 33565
Book Agent F.C.A. PH. 927-6010

If I figured correctly we had 2 International Masters, one Master and 9 experts participate. The players covered from Mexico to Ohio to N.J. back to Florida; a very wide coverage

If you need any more info let me know. Yes, send us some games-Ed.

4TH ANNUAL I.C.I. CLASSIC by Thad Rogers

In the second largest ICI Classic ever held with 89 players, P.L.N. Murthy (2119) of Atlanta, Ga. took 1st on tiebreaks over Tom Algeo (2151) of Athens, Ga. in the Open Section. Both players had a 4 1/2 score. This was a "Grand Prix" tournament. They each got 2 1/2 Grand Prix points. In the Amateur Section Paul Deter (Unr.) of Lawrenceville, Ga. took 1st place with 4 1/2.

They came from long distances as shown by Arturo Martin de Nicolas from San Jose, Costa Rica and Bill Steward from Houston, Tx. This years Classic had a two-fold purpose: to promote bigger and better future tournaments, and to provide an incentive for the development of younger players by affording them competition with more experienced rated players. This last point was done by offering better prizes for the low rated. There was just over \$1400. in cash and trophies distributed to the winners. Prizes were distributed as follows: P.L.N. Murthy & Tom Algeo-\$150 & trophies, Henry Robinson & Randy Kolvick-\$25, John Simmons-\$50 & Class A, Robert Spurrier-\$100 & Class B, David Vest-\$50, Nicholas Cox-\$100 & Class C.

The Amateur Section winners were:

Paul D. Peter \$75 & Trophy, Gerard Curran \$100 & Trophy Tim Bright \$100, Tim Deter Unrated Trophy, James Johnson \$100, Fred Dressel \$50 & Trophy, John Hopkins \$50, and Darryl Marsee \$75 & Trophy.

WHERE TO PLAY CHESS

ARKANSAS

Little Rock CC, Arkansas Enterprises for the Blind, 28th & Fair Park Blvd., Friday 6-11 p.m.

FLORIDA

Coral Gables
Coral Gables Memorial Youth Center, Monday 7 PM call Paul Daich 279-8720.

Jacksonville

Community Hall at the Phillips Mall Shopping Center, 3563 Phillips Hwy. Wed. at 7:30 PM. Melbourne

Melbourne CC, Old Civic Center, Front St. call Fred Arnold 724-2704. Mon Noon-6PM, Thur. 7-11 PM Miami

Miami CC, Miami Legion Park Hall, 64th St. & Biscayne Blvd. Sat & Sun 1-5 PM call Charles Turk 226-8235.

Orlando

Orlando Rec. Bldg. Paramore & Livingston, Wed. & Fri. 7:30 PM. & Sunday 1:30 PM call Larry Storch 273-4982.

Pompano Beach

Pompano Beach Rec. Ctr., 1801 N.E. 6 St. Fri 7:30 PM.

St. Petersburg

St. Pete CC, 540 4th Ave. N., Call G. Cantrell 527-6010.

Tallahassee

Tallahassee CC, FSU Univ. Union, Woodward Ave. & Tenn. St., Rm 346, 7 PM Tuesday.

GEORGIA

Adel

Cook County CC, Cook High School, Thu 3:05 PM.

Albany

Albany CC, NW Branch Library (Day & Time unknown)

Athens

Athens CC, Dudley Park, Thursday 8 PM.
Univ. of Ga. CC, Chemistry Bldg. Rm. 1505 Wed. 7:30 PM.

Atlanta

Northeast CC, St. Michaels Church 3323 Chestnut Drive Thursday 7 PM.

Augusta

Augusta CC, Augusta Rec. Center, Wed. 7:30 PM.

Dalton

Dalton CC, contact William Strain 1508 Dug Cap Rd Gainesville

Lanierland CC, Breneau College, Yonah Hall, 7:30 Tuesday.

Columbus

Columbus College, Davidson Center, Wed. 7 PM.

Macon

Macon CC, Robert Train Bldg. Oglethorpe Blvd. Wednesday 7 PM.

Rome

Rome CC, Rome Rec. Center, 300 West Third St Fri Savannah

Armstrong College CC, Gamble Hall, Fri 12:30 PM.
Savannah CC, Duffin Park Activities Bldg. Mon 7

Statesboro

Statesboro & Georgia Southern Ctr. Mon & Fri 7 PM

St. Simon's

St. Simon's Island CC, Island Club, 800 King's Way, Monday at 8PM.

Thomaston

Thomaston CC, Civic Center, Tue. 7:30 PM.

Valdosta

Valdosta CC, Tall Tree Apts. Rec. Ctr. 200 Connel Rd. Tues. 7:30 PM.

NORTH CAROLINA

Asheville

Asheville CC, North Asheville Community Ctr. Wednesday at 7 PM.

Charlotte

Metrolina CC, Central Piedmont Community College, Wednesday 7:30 PM.

Fuquay-Varina

F-V CC, F-V Sr. High School, 201 Broad St. Thu. 2:30-4:00 PM.

High Point

High Point CC, Oakview Rec. Center, James Rd. Thursday 7 PM.

Mars Hill

Mars Hill CC, Mars Hill College, Memorial Library, Thursday 7:30 PM.

Statesville

Statesville CC, Northwest Bank, Front & Ctr. St. Friday at 7:30 PM.

PENNSYLVANIA

Allentown

Allentown CC, Swain School, 1100 S. 24th St. Fri. 7:30 PM.

Polsom

Embassy CC, Tue. 7 PM. Pete's Embassy Restaurant Kedron Road (Pa. Rte. 420) and McDade Blvd.

Hathboro

Chaturanga CC, Thursday evenings, Loller Bldg. South York Road.

SOUTH CAROLINA

Charleston

Charleston CC, Post Courier Bldg. 6296 Rivers Ave. Wednesday 7 PM.

Clemson

Clemson CC, Church of Christ meeting room 212 Seneca Rd. 6 PM. Mon-Thur.

Columbia

Palmetto CC, Wade Martin Bldg. of Midlands-Tec, Beltline Campus Cafeteria 7-10:30 PM Thursday. Univ. of SC CC, Moore Dormitory Conference Rm., Monday 8:00 PM.

Greenville

Greenville CC, Bobby Pierce Community Ctr., Townes St. Wednesday 7 PM.

Site. Prizes: (\$210 b/3

80-40-30, E, Unr each 3

Both: GCA membership req'd (Other states ok) RDS: 10-3-8, 10-3.

This is a Grand Prix Tournament.

July 15 PEACH STATE SUNDAY TORNADO Ga
Details: See Peach State Saturday Quads on 7/14.

July 21-22 ARKANSAS OPEN Ar
5-SS, 45/2, Downtowner Motor Inn, 135 Central Ave. Hot Springs, Ar. 71901. In 2 Sections:

Open Section: Prizes: (\$210 b/20): 100-50 B-40, C/below-20. Trophies to top 2, Top B, C/below.

Reserve Section: Prizes: (\$210 b/20): 100-1599 & below) 50, D/E 40, Unr 20; Trophies to Top 2, Top D/E, Unr.

Both: Arkansas State Membership req'd (other states ok); HR: 17-28; LS: Rq: 8-9 A Rds: 9:30-2:30-7:30, 9-2. EF: \$15; Enter: Danny Williamson, 2316 S. Pine, Little Rock, Ar. 72204.



Lancaster

Lancaster CC, Star Hall, Univ. of SC at Lancaster, Thursday at 7 PM.

North Augusta

Augusta CC, Augusta Rec. Ctr., Wed. 7:30 PM.

Rock Hill

Rock Hill CC, Fewell Park Rec. Ctr. between Alexander & Thornwell, Tue 7:30 PM, 328-3433.

Spartanburg

Spartanburg CC, Sugar & Spice Cafe, North Pine St. Tuesday 7:30 PM.

Bring your own sets & clocks to the Chess Clubs. Many school clubs do not meet during the summer.

TOURNAMENTS

July 14 PEACH STATE SATURDAY QUAD Ga.
3-RR, 40/80, Sheraton Inn-Atlanta Airport, 1325 Virginia Ave., East Point, Ga. 30344. EF: \$5 if rec'd by 7/7; \$7 at site. Prizes: Trophy to 1st each section. Reg: Ends at 9:30 AM. Rds: 10-1:30 5. GCA Req'd (Other states ok) Enter: I.C.I., 3055 General Lee Rd. Macon, Ga. 31204. NS.

July 14-15 PEACH STATE OPEN Ga.
5-SS, 45/2, Enter, Location & Registration same as above. NS, HR: \$26. In two sections: Open Section: EF: \$14.50 if rec'd by 7/7; \$16.50 Prizes: (425 b/36, Top 3 gtd.): \$ 125-75-50, A, B, C each \$50, under 1400-\$25.
Amateur Section: EF: \$11 if rec'd by 7/7, \$13 at

July 21-22 THE L.P.O. NC
Clemmons, NC. \$6000 in PRIZES, See Display ad back cover.

July 28 PSCF-AWBURY QUADS Pa
Awbury Rec. Center, Ardleigh & Haines S Philadelphia, Pa. EF: \$5 to PSCF Member \$7 to others; REG: 8:30-9:00 AM; RDS: 9:30 then Consecutively; TL: 40/40, 30/30. Prizes: \$12 to 1st or Trophy.

Aug 4-5 SUNBELT CLASSIC Ga
5-SS, Marriott Hotel, 246 Perimeter Center Parkway NE, Atlanta (I-285 at Ashford Dunwoody Exit) In two sections: OPEN: EF: \$17.50 if by 7/27; \$20 at site. TL: 45/2. Prizes: 1st \$250. (GTD) others based on 45 in section 2nd \$125, 3rd \$75 A-B \$60. each. RESERVE: (Open to under 1600) EF: \$14 if by 7/27; \$16.50 at site. TL: 40/90 Priz (based on 45 in section) \$150-80-60, D 5 E 50, Unr 50. Both FREE CONTINENTAL BREAKFAST 9 AM Sunday for all players. REG: 8:30-9:30 AM 8/4. RDS: 10-3-8, 10-3. GCA membership req'd (others ok); Enter: Steve Hunt, 4153 Wesley Club Dr., Decatur Ga. 30034. NS. A GRAND PRIX TOURNAMENT.

Aug 18-19 THE WILKES-BARRE OPEN Pa
The Sterling Hotel, West Market & River Sts., Wilkes-Barre, Pa. 18701. 5-SS, 40/2

EF: Juniors \$10, Adults \$13 if rec'd by 7/15, \$2 more at site; Rds: 10-2:30-7, 10-3; Reg: 8:30-9:30 Guaranteed Prizes: \$150-75; To B 50, Top C 40, D/E 35, Trophies to 1st, 2nd, Top B, Top C, Top D, Top E, Top Unr, Top Luzerne Co. \$1 off entry fee to WBCC members, \$1 off entry fee to PSCF members. HR: 16-18, 24 with a cot. Also a 5% discount for meals in the hotel dining room.

Aug 18-19 MIDLANDS OPEN SC
5-SS, 40/90, Wade Martin Bldg. of Midlands Tec, 316 Beltline, Columbia, SC. Reg: 8:15-9 AM, NS, SCCA Membership req'd (other states ok), Enter: David Erb, 106 Wembley, Columbia, SC 29209. Rds: 9:15-1:45-6:15, 9-1:30; In two sections:
Open Section: EF: \$10 if rec'd by 8/16, \$12 at site. Prizes: \$100-75, \$25 to Top 1550-1699, and to Top under 1550. Prizes are based on 25 with a Guarantee of \$90.

Reserve Section: Prizes: \$45-30, Top E \$15, Top Unr (1399 & under) \$10. Prizes are based on 25 with a guarantee of \$40. EF: \$6 at site or \$5 if rec'd by 8/16.

Aug 24-26 GOOD-BYE DOUG OPEN SC
5-SS, TL: 40/2, 20/1, Post-Courier Community Rms., 6296 Rivers Ave., N. Charleston, SC 29406; EF: \$15 (USEF \$27, Jr \$22) if mailed by 8/17. All EF \$5 more at site; Prizes: (\$425 b/35) \$150-100-55, B/C \$50, D/E \$40, Unr \$30. SCCA Membership req'd (others ok); Reg: 6:30-7:30 PM; Rds: 8, 9-3, 9-3; Enter: Douglas Taffinder, Jr., 8345 Delhi Rd., Charleston Hts., SC 29405. NS.

Aug 25 SOUTHEASTERN SATURDAY QUADS Ga.
3-RR, TL: 40/80. Marriott Hotel at Perimeter Center, 246 Perimeter Center Pkwy. NE (I-285 at Ashford Dunwoody Exit) Atlanta 30346. EF: \$7; Trophies to 1st each section; Special sections for Elem & HS students only; Reg: Ends at 9:30 AM. Rds: 10-1:30 5. Enter: ICI, 3055 General Lee Rd., Macon, Ga. 31204. NS, GCA Membership req'd (others ok).

Aug 25-26 5TH SOUTHEASTERN CHESS CONGRESS Ga.
5-SS, TL: 45/2, Location, Enter, and Registration same as above. EF: \$16.50 if rec'd by 8/18; \$18 at site; Prizes: (\$850 b/70, Top 2 Gtd.): 150-100, A, B, C, D, E, Unr each \$100; Trophies to 1st, Top CC of 5; GCA Membership req'd (others ok); Rds: 10-3-8, 10-3; HR: \$26-26 (Normally \$48-52), special features: Indoor-outdoor pool, Sauna, etc.: NS.

Aug 25-26 SOUTH CAROLINA OPEN SC
5-SS, Tri County Technical College, Hwy 76, Pendleton, SC. TL: 40/90, EF: \$10 if rec'd by 8/18, \$22 at site; Reg: 8-9:30 AM 8/25; Prizes: \$200 GTD to 1st, others based on 65-\$350-150-100, A, B, C, D, below each \$75, Unr-\$50. SCCA Membership req'd (other states ok); Rds: 10-2:30-7, 9-2. Enter: Stan Vaughan, P.O. Box 73, Fair Play SC 29643 NS.

Aug 26 SOUTHEASTERN SUNDAY QUADS Ga.
Details same as Southeastern Saturday Quads on 8/25.

Aug 31-Sept 2 ARKANSAS CHESS CHAMPIONSHIP Ar.
5-SS, Arkla Gas Company Clubhouse (Little Rock), the playing site is next to the state fair grounds on Roosevelt Road. Rds: 7:30, 2-7, 9-2. TL: 50/2, 25/1 Limited no smoking, Reg: 6:30-7:30 PM 8/31 & 8-9AM 9/1 for first round at 9:15 AM Sat. Prizes: (based on 35 paid entries) \$100-50, Top B, C, D/E \$45 each, Top Unr \$30. EF: \$15, Unr EF \$7.50, 1st Tournament EF FREE; Business Meeting 1:45 p.m. 9/2. For more information contact ACA/ c/o D.J. Williamson, 2316 S. Pine, Little Rock, Ar. 72204 call 501-666-0741.

Sept 1-3 FLORIDA STATE CHAMPIONSHIPS Fl.
\$1700 Guaranteed Prizes, St. Pete. See Ad Pg.

Sept 1-3 GEORGIA OPEN Ga.
Augusta, Details see CL&R August.

Sept 1-3 NORTH CAROLINA CLOSED CHAMPIONSHIP NC
6-SS, Carolina Union, UNC, Chapel Hill, NC. Open to NC residents, students, and military personnel. In 3 Sections, Prizes based on 30 per section.
Championship Section: 40/2, EF: \$12, \$125-75-25, A \$50, B/below \$20. Trophy & title to champion, Top 3 get invitation to NC Invitational.
Amateur Section: 50/2, Open to below 1800 & Unr., EF: \$10, Prizes: \$125-50, C-50, D/below-20, Unr-20 Trophy to 1st.

Reserve Section: 50/2, Open to 1400/below & Unr. EF: \$8, Prizes: \$100-25, E \$25, Unr \$15, Below 1000 \$15, Trophy to 1st.
All: EF \$2 more if rec'd after 8/28, NCCA Mem req, Prizes more if entries, USCF + EF = EF + \$12, Jr. EF + \$6, P. Jr. EF + \$2. Rds: 10-1, 2-7, 11:30-5, 9-3. Enter: Tom Galloway, 406 Morrison, Chapel Hill, NC 27514. LS. Business Meeting 11:30 9/1 all NCCA members are urged to attend.

Sept 1-3 PENN STATE CHAMPIONSHIPS Pa.
6-SS, Pete's Embassey Restaurant, Rte 420 (1.8 miles north of I-95, just south of Phila Int. Airport), Folsom Pa. Rds: 12-6, 11-5, 9-3.
CHAMPIONSHIP SECTION: TL: 50/2, 30/1. EF: \$15 in advance, \$20 at door, to PSCF Members (MCA ok); others \$5 more. Prizes: \$150-100-50-30; Exp \$25-10; A \$25-10; B \$25-10; C \$25-10; D \$25-10; E/Unr \$25-10. Trophies to Top 3, Top in each class. Highest Pa. player finishing will be named the State Champion.

RESERVE SECTION: TL: 30/1, 20/30. EF: \$10 in advance, \$15 at door, to PSCF members; \$5 more to non-members. Prizes: (Based on 50) \$100-50-35-25-20; 1200-1299 \$15-10; 1100-1199 \$15-10; 1000-1099 \$15-10; Under 1000 \$15-10. Trophies to Top 3 overall.
All: hotel rooms at Walbers on the Delaware, Taylor Ave & Rte. 420, Essington: \$22-30.
Business meeting on Sunday Sept. 2, at 9:30 AM.
Enter: Ira Lee Riddle, Fox Run Apts. #F24, 365 Newtown Rd., Warminster, Pa. 18974. For more info call 215-674-9049.

Sept 15 RAM V NC
Carolina Union, Chapel Hill, NC 3-SS, in 8 player sections. EF: \$3; Prizes: \$15 to 1st in Top section, Trophies to 1st in others. TL: 40/90; NCCA Membership req'd, Reg: 9-10 AM. Rds: 10:30 3-7; LS; USCF + EF = \$15, Jr = \$9, p Jr. = \$5.
Enter: Tom Galloway, 406 Morrison, Chapel Hill, NC 27514.

Sept 29-30 9TH ANNUAL HATBORO OPEN Pa.
5-SS, 40/80; EF: \$10 by 9/19, \$15 at site, \$1 less to PSCF members; Prizes: (\$500 b/60) \$100 Gtd, or (\$250 b/30) \$200-100-50, Top under 1800, 1600, 1400 each \$50. Reg: 8:30-9:30 AM. Rds: 10-2:30-7, 9:30-2:30; Enter: Richard Kraft, 546 Coach Rd., Horsham, Pa. 19044. NS.

Oct 5-7 COLUMBUS WEEKEND TOURNAMENT Fl.
5-SS, Pompano Beach Recreation Center, 1801 NE 6th St. Pompano Beach, Fl. (Off Rte. 1) \$1500
GUARANTEED PRIZE FUND: In 2 Sections:
OPEN SECTION: \$15 Advance EF; Prizes: \$300-200-100, \$50 upset prize, Top woman & Unr prize; Top class prizes.
RESERVE SECTION: \$10 Advance EF; Prizes: \$175-125-75, Upset Prize.
All TL: 45/2, Rds: 7:30, 10-3, 9-2; Reg: Ends at 7 PM Friday night; 1 point bye if requested in advance; FCA Membership req'd (others ok); NS;
Enter: D. Stone, Box 2004, Ft. Lauderdale, Fl. 33303. Sponsored by the Pompano Beach CC.

Oct 20-21 ORRIE'S PERM PALACE #2 Pa.
4-SS, Orrie's Perm Palace, 1520 N. Broad St., Philadelphia, Pa. 19120. In two sections:
OPEN SECTION: TL: 40/80, 30/60; Reg: 10-12 noon; Rds: 1-6, 10-3; EF: PSCF Members \$20 in advance, by Oct 10, \$22 at the door; Non-PSCF members \$3 more. Prizes: Guaranteed \$125-80-40-30-25-15-10, Class prizes Exp, A, B, C, D/E/Unr \$25-10 each class Trophies to Top 4 and 2 per class Exp, A, B, C, D/E/Unr.
RESERVE SECTION: TL: 40/60, 30/30, Reg: 10-Noon, Rds: 1-5, 10-2, EF: PSCF members \$10 (by Oct 10) \$12 at the door, Non-PSCF members \$3 more.
Trophies: Top 4, Top 3 under 1400, 1300, 1200, 1100, 1000/Unr & Top Upset. Enter: Ira Lee Riddle, Fox Run Apts #F24, 365 Newtown Rd., Warminster Pa. 18974 or call 215-674-9049.

MEMORIES OF THE LPO by Tom Galloway

The LPO has a special meaning for me. The 3rd LPO, held in 1976, was my first USCF tournament. Just imagine...a scared, nervous, totally confused 15 year old. In other words, just what I am now, but three years younger. The tournament was not worthy for my new way of playing the Alekhine.

My first game went something like this: (I have Black, if you can't guess.) 1 P-K4 (I, of course had something prepared for this.) 1...N-KB3!! (a master stroke) 2 P-K5 (A weak move, ruins his pawn structure) 2...P-Q3 (attacking the pawn). 3 PxN (totally demolishing his pawn structure, but winning a piece) and so on. I finally won a game (5th round against another 1st tournament player) and finished 1-4 tied for 4th place unrated (so what if there were only 5 unrated that year. I was only a 1/2 point out of a prize for 3rd Unrated).

That year the LPO was held at the Hilton and drew a mere 174 players, awarding a total of \$3650. Charles Powell and Richard Delaune of Va. tied with 4 1/2.

The next year the prize fund went up to \$4000, the number of entries to 223, and the temperature to 90+. Due to not one, but two separate air conditioning break downs. For some reason, the people at the Hilton simply wouldn't believe the air conditioning could break down. Supposedly fixed after the Sat. night round, it broke down again for the Sun. afternoon round. All of a sudden we realized the tournament had moved to the bar as temperatures soared over 100 F.

This years winners were Charles Powell and Doug Brown (NJ) with 4 1/2. Meanwhile I go 2-3 in the Novice Section.

Last year, my mother got married, unfortunately, she decided to do so on the 1st day of the tmnt. The wedding was at 3:00. It is a 3hr. drive to Winston-Salem from Brevard. I figured I could drive down the night before, play the 1st round, leave at noon, rush into the ceremony, grab a coke at the reception, and make it back for the 3rd rd. For some reason my mother wasn't too thrilled with the idea.

I got into the Hyatt House at about 9 PM, greeted by 224 players, battling for \$5200 and a hand blown glass decanter. I also end up being an assistant TD (Hey it got my name in CL&R). Who can forget the elevators, the 3 AM poker game, the girls in the restaurant, and Mark Ginsburg of Md. and Richard Delaune of Va. (again) tying at 4 1/2 for 1st. Also some guy named Bradford who didn't win a prize. (proving the LPO is tougher than the US Open.)

This year the LPO will be held at the Ramada Inn in Clemmons (10 miles west of W-S, near the 1st site in Tanglewood) with a new record amount of \$6000+ on the line. And I'll be there again, this time as a hired assistant TD (The only sure way to make money at the tournament). Many thanks to Lawrence Pfefferkorn and Dr. Al for putting on (or up with) the tournament each year. Just remember you too can raise your rating 210 points in 3 years, and become a state officer.

(The writer has been in a state of collapse since taking 5 finals in 4 days 2 months ago. This article clearly shows it.)

WELCOME

The Chessman would like to welcome all of our new members and readers of every kind. The Arkansas Chess Association, over 100 new members in Miami, Fl., Tim and Barbara Taylor in Easton, Pa., and about fifty other new Pennsylvania members, Mike Rice in New Orleans, the half dozen new California members, John McNabb in DeKalb, Il., John Leitl in Almont, N. Dak. and our old friend Wally Helgeson in Huntsville, Alabama and many others. The Chessman needs all of you to become contributors in the near future.

THE END

\$6,000.00

**UNCONDITIONALLY GUARANTEED
AGAIN, THE LARGEST**

**CHESS
TOURNAMENT**

IN NORTH CAROLINA HISTORY

**5-ROUND SWISS TOURNAMENT \$25 ENTRY FEE IF RECEIVED BY 7/10 (\$30 AT DOOR)
THE SIXTH ANNUAL**

L. P. O.

**(Lawrence Pfefferkorn Open)
The Ramada Inn, Clemmons, N.C.**

JULY 21 & 22, 1979

IN THREE SECTIONS; ROUNDS: 10, 3, 8, 10, 4 TIME LIMIT: 50/2
REGISTRATION: 7 to 9 p.m. on July 20, & 8 to 9 a.m. on July 21
You may Register and Play in a Higher Section than Yours if you wish

29 CASH PRIZES

**OPEN SECTION
(OPEN TO ALL)
\$2700 IN PRIZES**

**AMATEUR SECTION
(BELOW 1800)
\$1800 IN PRIZES**

**NOVICE SECTION
(BELOW 1400 & UNR.)
\$1500 IN PRIZES**

	Overall	Expert	Class A
1st	\$600	\$300	\$350
2nd	300	225	300
3rd	200	175	250
4th	—	—	—

Dinner at The Ramada Inn Friday Night

	Overall	Class C
	\$400	\$300
	300	250
	200	150
	100	100

	Overall	Class E	Unrated
	\$400	\$100	\$100
	250	75	75
	200	50	50
	150	25	25

Optional Trophies Available To Winners

MANY ADDITIONAL SPECIAL PRIZES

USCF & NCCA Membership Required (Other States OK)

**Pre-Enter and Information: Dr. Alan Lipkin, Tournament Director
2635 Glenhaven Lane, Winston-Salem, N.C. 27106**

**THE CHESSMAN
2672 MOSS LN.
MARIETTA, GA. 30067**

**Application to mail at
Second Class rates is Pending
at Marietta, Ga. 30060**

LEE HYDER
33 LONGWOOD
AIKEN, S.C. 29801

11/79