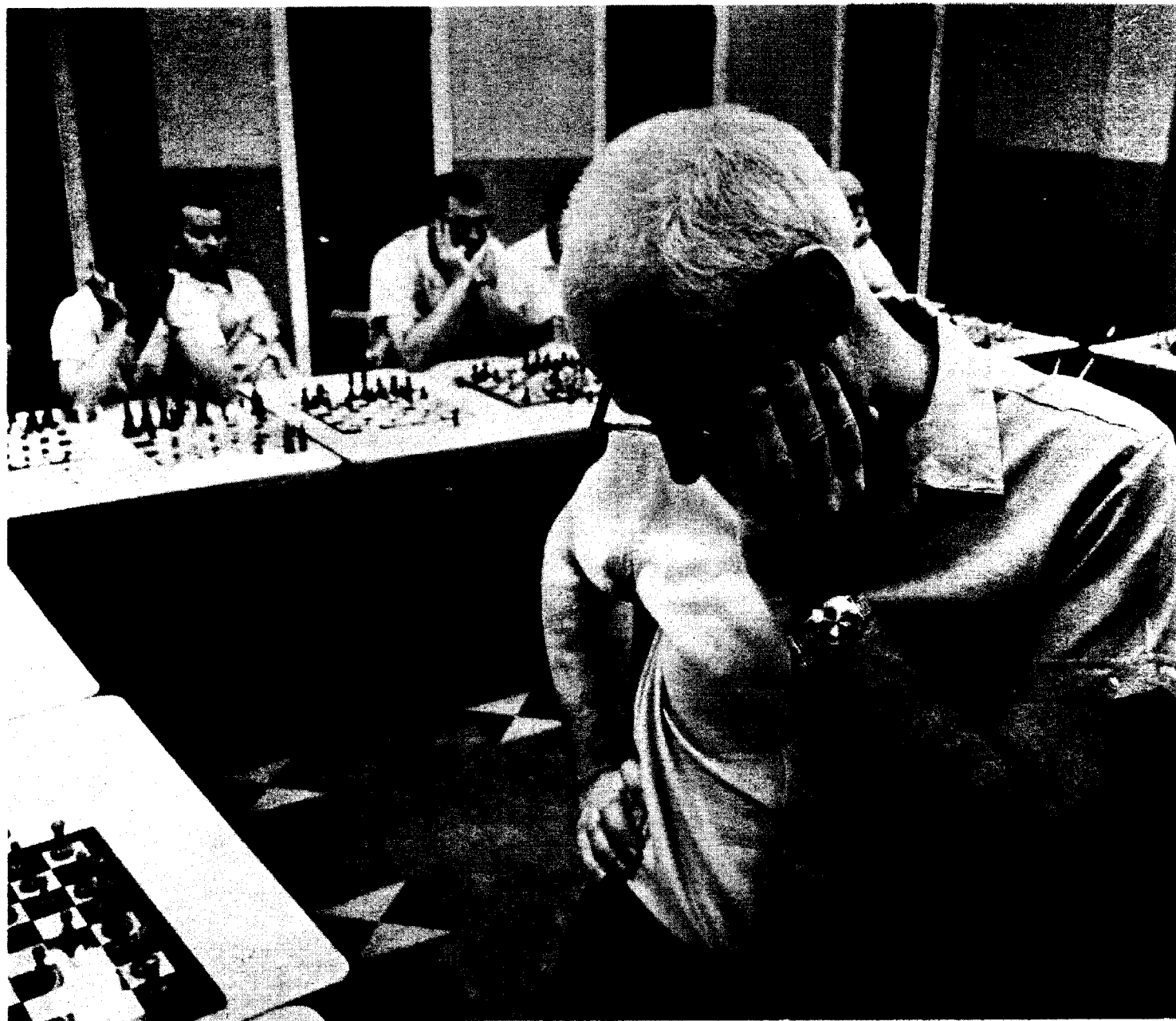


The Chessman

PRICE 75¢

SEPT-OCT 1979

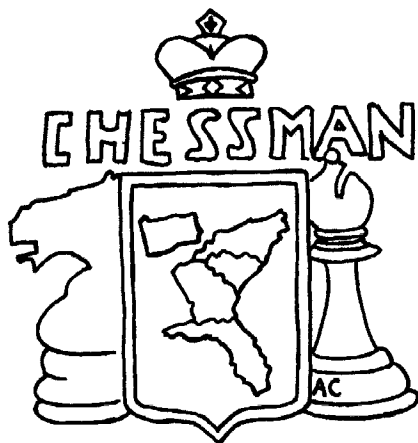


THE LPO

Philadelphia

LEE HYDER
33 LONGWOOD
AIKEN, S.C. 29801

11/79



SEPT-OCT 1979

Volume 3 Number 1

Editor-in-Chief
J. Earle Morrison

Associate Editors

Ar. Craig Kozel

Fl. Arnold Denker

Ga. Alison Bert

NC Sean O'Brien

Pa. Ira Lee Riddle

SC Lee Hyder

Correspondents

Bill Golchberg

Robert M. Snyder

Games Editors

Donny Gray

Tom Morris

Chuck Braun

Mike Decker

Alex Dunne

S.C. Chess Association

President

William Dodgen
2008 Robin Road
N. Augusta, SC 29841
Phone (803) 279-6881

Vice President
Marion Mahaffey
1207 Memorial Park Rd.
Lancaster, SC 29720
Phone (803) 282-2312

Secretary
Charles Braun
7 Winthrop Dr.
Aiken, SC 29801
Phone (803) 648-5446

Treasurer
Harold Kelley
811 Rhododendron Pl. SE
Aiken, SC 29801

Editor
M. Lee Hyder
33 Longwood Dr.
Aiken, SC 29801

PENNSYLVANIA STATE CHESS FEDERATION

President

Ira Lee Riddle
Fox Run Apts. F24
365 Newtown Rd.
Warminster, Pa. 18974
Phone: (215) 674-9049

Vice President

Tom Mager
1120 Jacks Run Rd.
N. Versailles, Pa. 15137

Secretary

Bob Dudley
107 Crocstree Rd.
Coraopolis, Pa. 15108

Treasurer

Gary Connors
93 Sarona Dr.
Holland, Pa. 18946
Phone: (215) 355-0878

JOIN THE EASTERN CHESS SOCIETY

BENEFITS: You will receive The Chessman six times a year, and be entitled to special discounts on USCF memberships.

Adult 1 Yr. SC \$6.00, with USCF \$18.00; Ar,Fl,NC, & Pa. \$5.00 with USCF \$17.00; Ga \$5.00, with USCF \$20.00

Adult 2 Yr. Ga. \$9.00
Junior 1 Yr. Ar,Fl,NC,Pa,SC. \$3.00 with USCF \$2.00; Ga. \$5.00 with USCF \$13.00

Junior (No magazine) SC \$1.00, with USCF \$3.00; Ga. \$2.00 with USCF \$4.50.

Send Memberships To:

Arkansas: ACA, 2316 S. Pine St.,

Little Rock, Arkansas 72204.

Florida: FCA, 4040-67th Ave., N.

Pinellas Park, Fl. 33565

Georgia: GCA, 1269A N. Morningside

Dr., Atlanta, Ga. 30306

North Carolina: NCCA, 411 Morrison,

Chapel Hill, NC. 27514

Pennsylvania: PSCF, Fox Run Apts F24

365 Newtown Rd., Warminster, Pa 18974

South Carolina: SCCA, 7 Winthrop Dr.

Aiken, SC. 29801.

Make checks payable to: ACA, FCA, GCA

NCCA, PSCF, or SCCA.

Subscription Only \$4.00 Send to

The Chessman, 2672 Moss Lane, Marietta,

Ga. 30067. Phone (404) 952-8259

NAME:

ADDRESS:

CITY:

ZIP CODE (REQ'D):

If Junior Birthdate:

GEORGIA CHESS ASSOCIATION

President

D.D. Schults
4798 Olde Village Lane
Dunwoody, Ga. 30338

Vice President

L. Thad Rogers
3055 General Lee Road
Macon, Ga. 31204
Phone (912) 742-5607

Secretary

Bill Noyes
777 Briarcliff Rd.
Atlanta, Ga. 30306

Treasurer

Mike Decker
1269A North Morningside Dr.
Atlanta, Ga. 30306

Editor

Alison Bert
1914 Jacolyn Place
Atlanta, Ga. 30329

NORTH CAROLINA CHESS ASSOCIATION

President

Bill Wall
Box 167
Stony Point, NC 28678
Phone: (704) 632-5751

Vice President

Alan Lipkin
2635 Glenhaven Lane
Winston-Salem, NC 27103

Sec-Treas.

Tom Galloway
137 Glen Cannon Dr.
Pisgah Forest, NC 28768

Editor

Sean T. O'Brien
537 Hinton James
Chapel Hill, NC 27514

A Letter from the Publisher

I just want to take a minute here to thank our games editors, who were really put to the test with this issue. In severe time pressure, they met the challenge.

In this issue you will find some new features, etc. These are included on the basis of data we see, rather than any preconceptions. JEM.

Table of Contents

GAMES

The LPO	by Tom Galloway	3
Tom Morris Annotates	by Tom Morris	5
Latvian Gambit	by Tony Renna	6
French Defense	by Mike Decker	6
Rambling Along	by Arnold Denker	7
Philadelphia	by Bill Golchberg	7

FLORIDA:

Simultaneous	by David Brown	9
Southern Open	by John Morash	9
Gulfcoast Open	by John Morash	9
Postal Chess	by Tom Morris	9
July Jubilee	by C.E. Braun	9
Wilkes-Barre	by Alex Dunne	10
Closed Sicilian	by Robert M. Snyder	10
The Arkansas Open	by Craig Kozel And Donny Gray	11
Ruben Schron in New York	by Walter Shipman	12
Denker/Gonzales	by John Hurt	12

WHERE TO PLAY CHESS

Chess Clubs

COVER STORY

People	by Earle Morrison	13
The Press	by Earle Morrison	13
Crostable		14
Tournament Announcements		16
Tournament Reports		16
Arkansas Business Meeting		17
Clearinghouse Report		17
Editorial	by Earle Morrison	17
NOTICES		17
Prison Chess	by Earle Morrison	17
Books	by Earle Morrison	17
ORGANIZATION		17

The Chicago Fire:

What's up in Pennsylvania Chess	by Ira Lee Riddle	18
USCF Delegates Meetings	by Don Schults	18
Chess 0.0	by Tom Galloway	18
Everything you want to know about the NCCA, but are afraid to ask	by Tom Galloway	18
Club News		18
News from upstate SC	by Marvin Chappell Jr.	19
Jacksonville Chess Club	by Ed Butler	19
Letters to the Editor		19
US Junior Open	by Tom Galloway	19

POSTMASTER

The Chessman is published bimonthly, subscription rates are \$4.00 per year, by The Chessman Co., 2672 Moss Lane, Marietta, Ga. 30067. All rights reserved. Reproduction in whole or in part without written permission is prohibited. Second Class postage paid at Marietta, Ga. 30060. Send address changes to The Chessman, 2672 Moss Lane, Marietta, Georgia 30067.

USPS 476-790

ARKANSAS CHESS ASSOCIATION

President

Danny Williamson
2316 S. Pine St.
Little Rock, Ar. 72204

Vice President

Donny Gray
Rt 8; 1645 Whipperwill Ln.
Pine Bluff, Ar. 71602

Treasurer

Chuck Niggel
213 South Valmar
Little Rock, Ar. 72205

Secretary

Mike Clingan
Rt. 2 Box 203
Gurdon, Ar. 71743

Editor

Craig Kozel
P.O. Box 94
Perryville, Ar. 72126

FLORIDA CHESS ASSOCIATION

President

Gilbert Cantrell
4040 67th Ave. N.
Pinellas Park, Fl. 33565
Phone: (813) 527-6010

Vice President

Larry Storch
1622 E. Harding Ave.
Orlando, Fl. 32806
Phone: (305) 896-3848

Sec-Treas.

Flora Cantrell
(Same as President)

Directors:

Arnold Denker
2701 N. Ocean Blvd. SE
Ft. Lauderdale, Fl. 33308
Phone: (305) 564-6126
Garry Sanders
421 Pinellas Way S.
St. Pete, Fl. 32903
Charles Turk
12802 SW 12th Terr.
Miami, Fl. 33184
Phone (305) 226-8235
Egon Teodorson
775 Malibu Lane
Indiatlantic, Fl. 32903
Phone: (305) 773-3215
Mark Solomon
6 Bayberry Branch
Casselberry, Fl. 32707
Phone: (305) 831-0176
Douglas Carpenter
2853 Post St. Apt. 3
Jacksonville, Fl. 32205
Phone: (904) 389-7989

**S.C. Closed
Championship
Columbia, S.C.
Nov 9-11, 79
See Pg. 16**

The LPO

The 6th Annual LPO
by Tom Galloway

Once again, the LPO set a record for prize funds, awarding \$6025. Unfortunately, it did not set a new attendance record as 211 players attended as compared to 224 last year. Undoubtedly, this was due to the gas crunch, despite the fact that gas was plentiful in NC. In fact, one station across from the Ramada Inn (tournament site) was open Sunday night at 10 P.M. Those 211 players, however, came from 20 states and DC.

Defying probability, each section had a clear winner. The \$2700, 53 player open section was won by Mark Ginsburg (2355) of Maryland with a 5-0 score. This earned him \$600. Mark was last year's co-champion when he scored 4.5. Although 4 players scored 4-1, James Dracup (1951) of NY was awarded top A for his 4, since it was a larger prize. Thus Greg Samsa (2192), Dan Liu (2001) both of N.C. and Raymond Tiltens (2126) of Mi., split the 2nd and 3rd overall and top Expert prizes. Second and third Experts were Henry Robinson (2037), Tn. and Wayne Trosclair (2025) of La. with 3.5. Second and third prizes, for A players, were awarded to Jim Watson (1986) of NC, and Dennis Funkhouser (1958) of WV and Matthew O'Hara (1893) of NY, all had 3.5.

Doug Taffinder (1710) of Charleston, SC is leaving for college in NY with \$400. of tuition by going 5-0 in the Amateur Section. Peter Togs (1603) of NC asked me several times to check and be sure that his rating wasn't under 1600, was clear second with 4.5, followed by James Tobin (1595) of NC, James Hyatt of SC, and Ron Easter (1486) Tn. each with 4 points.

Upsets were the rule in the 77 player Novice Section. The winner, Dan Lancry (1216) of Ohio, won his \$400. despite being ranked 31st in the section. 4.5 points were needed to secure an overall prize. This was accomplished by Gerrard Curran (1384) of La., Mark Samuelian (1145) of Ma, and Darryl Ferguson (990) of Va. The Top E prize was shared by Danny McKeithen (1174) and Paul Brooks (924) both of NC with 4 points Jackie Ryan (1190) of NC, William Floyd (1188) of SC, and Elmer Billman (1068) of NC took the remaining E prizes with 3.5. Randy Grim of NC won the unrated prize with 4 followed by Jay Guest and Kenneth Ervin of SC and Jerry Sheppard and Gary Edwards of NC with 3.

Entries for the third Al Lipkin Brilliancy Award for the "most daring and flashiest" game were judged by NC co-champion Greg Samsa. The winner was Peter Henderson of Va., and the game is on this page. Thirty-seven players won prizes 12.8% of all players.

One director won a prize; "Dr. Al" was awarded a plaque in a surprise presentation just before the first round. The plaque expressed the appreciation of players and NC chess for his work in organizing the six LPO's. Al stated that his only regret is that he can't play in the tournament. But, we are working on trying to let him next year.

Al's job was to keep everything running smoothly over all. The actual work of pairings was done by Thad Rogers (Open), Clyde Davis (Amateur) and Tom Galloway (Novice).

All rounds except those delayed by extended games started on time, even the first. Also, thanks to Carole Lipkin, Lois Wall, Philip Jackson, and Lori Lipkin for helping with registration.

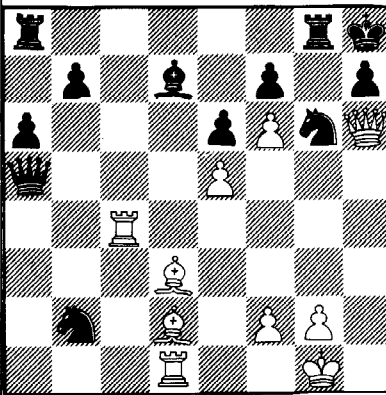
The most notable incident was a game where coins were showered on the board and which received a round of applause from all the players. Leland Fuerstman, who has returned from Kansas City to Charlotte, made a mating move against an anonymous player and yelled out "MATE" early into one round. Everyone hesitated and then burst into applause as the Expert on the next board threw pennies onto the board. That game is also included in this report.

The sixth LPO is now history, and planning has begun for the seventh. I would like to thank Lawrence Pfefferkorn for his support, without which the tournament would not be possible. This support is a great asset to NC chess and chess in the entire South and Mid-Atlantic. Mr. Pfefferkorn once again attended the pre-tournament dinner, and chatted with the players at the tournament.

SICILIAN DEFENSE WING GAMBIT

(W) Peter Henderson (1866) Va.
(B) Charles Meidiner (1730) Al.

1 P-K4	P-QB4	14 P-QR4	Q-B2
2 P-QN4	PxP	15 QR-B1	Q-R4
3 P-QB4	PxPep	16 P-R4	N-B4
4 NxP	P-Q3	17 N-KN5	BxN
5 B-B4	N-KB3	18 PxN	NxRP
6 P-Q4	P-K3	19 N-K4	N-K2
7 N-B3	B-K2	20 N-B6+	PxN
8 O-O	O-O	21 NfPp	N-N3
9 Q-K2	R-K1	22 Q-R5	K-R1
10 P-K5	PxP	23 Q-R6	R-KN1
11 PxP	KN-Q2	24 B-Q3	B-Q2
12 R-Q1	N-QB3	25 R-B4	N-M7:
13 B-B4	P-QR3	26 B-Q2	...



26 ... QxP

Better is 26...NxR(5) 27 BxQ NxR, however, White wins with 28 B-N1! B-N4 29 R-Q4 QR-QB 30 R-KR4 and mate soon.

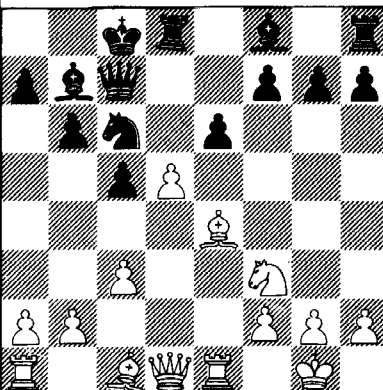
27 QxP+ KxQ 28 R-R4+ Resign

FRENCH DEFENSE

TARRASCH VARIATION
(W) Rhodes Peele (1731) NC
(B) Tom Thorpe (1549) SC

1 P-K4	P-K3	5 P-B3	N-B3
2 P-Q4	P-Q4	6 B-Q3	P-QN3
3 N-Q2	P-QB4	7 O-O	B-N2
4 KN-B3	N-QB3	8 R-K1	PxKP

9 NxP NxN 11 P-Q5: O-O-0 ?
10 BxN Q-B2



12 PxN! RxQ 15 P-KN3 P-B4
13 PxR+ K-N1 16 RxR! PxR
14 RxR B-Q3

But not 16...QxR 17 B-B4 winning the Queen.

17 B-B4 KxP 21 R/1-Q6 R-B1
18 QR-Q4 K-R3 22 N-B6 Q-R1
19 R-Q7 Q-B1 23 P-QR4 P-K4
20 N-K5 P-N3 24 P-QN4 ...

With the threat of P-N5mate.

24 ... PxP 27 R/6-B7 R-QR1
25 PxP QxN 28 PxP P-R4
26 RxQ PxR 29 P-R4 ...

Black is in Zugzwang.

29 ... P-KN4 30 BxP Resign

SICILIAN DEFENSE NAJDORF VARIATION

(W) Dennis Funkhouser (1958) WVa.
(B) Stanley Fink (2157) Md.

1 P-K4	P-QB4	7 P-B4	B-K2
2 N-KB3	P-Q3	8 Q-B3	Q-B2
3 P-Q4	PxP	9 O-O-0	P-R3
4 NxP	N-KB3	10 B-R4	QN-Q2
5 N-QB3	P-K3	11 B-K2!	P-QN4?
6 B-KN5	P-QR3		

White obtains a large advantage here after the Queen sacrifice on move 13. The position is more favorable to White than in the famous Keres-Fischer game because White retains his QB.

12 P-K5 B-N2 14 BxB P-Q4
13 PxN BxQ 15 NxKP! ...

Takes advantage of the weakness on Black's KN3, and prevents Black from activating his Queen with QxP+

15 ... PxN 18 PxR+ K-N2
16 B-R5+ P-N3 19 B-N3! N-B3
17 BxP+ K-B1

19 ...KxB? 20 P-B5+ wins the Queen.

20 KR-K1 P-N5 22 RxKP QxR
21 P-B5 QxP 23 PxQ PxN?

23 ...KxB must be better.

24 B-KB7 PxP+ 28 R-B5 P-R5
25 KxP P-KR4 29 B-B4 R-KR1
26 B-K5 QR-QB1 30 R-N5+ K-B1
27 R-KB1 R-R3 31 B-Q6 Checkmate

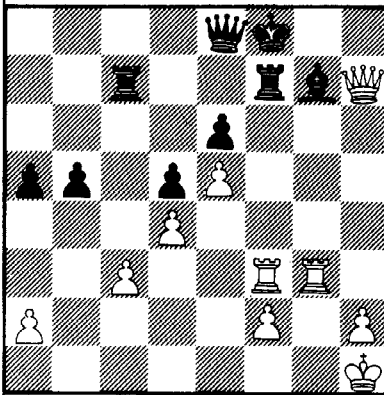
SICILIAN DEFENSE

(W) Mike Lucas (1930) Ga.
(B) Macon Shibut (2027) Va.

1 P-K4	P-QB4	10 N-B3	NxN
2 N-KB3	N-QB3	11 PxN	Q-R4
3 B-N5	P-KN3	12 Q-N3	B-N5
4 O-O	B-N2	13 B-N5!	BxN
5 P-B3	N-B3	14 PxR	P-K3
6 R-K1	O-O	15 P-KB4	Q-B2
7 P-Q4	PxP	16 R-K3	KR-B1
8 PxP	P-Q4	17 R-R3	N-R4
9 P-K5	N-K5	18 Q-Q1	P-QR3

With his last two moves Black has been driving White's pieces to the King side.

19 B-B1	N-B5	27 R-KN1	R-Q1
20 Q-N4	P-KR4	28 R/1-N3	R/1-Q2
21 Q-R4	N-Q7	29 R-B3	Q-K1
22 B-K2!	N-K5	30 Q-R7+	K-B1
23 BxRP!	PxB	31 P-N6	P-QN4
24 QxP	NxB	32 R/R-N3	P-R4
25 PxN	Q-K2	33 PxP	RxP
26 K-R1	R-B2		



34 RxR!! Q-Q2 35 Q-R8+ 1-0

QUEEN'S GAMBIT DECLINED

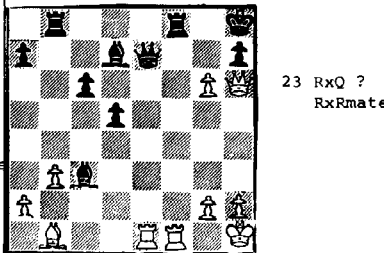
(W) Anonymous
(B) Leland Fuerstman (1888) NC

1 P-Q4	P-Q4	12 NxP	Q-K4
2 P-QB4	P-K3	13 Q-R4+	N-B3
3 N-QB3	N-KB3	14 N-N3	P-Q5!
4 B-N5	P-KR3	15 B-N5	PxN
5 BxN	PxB	16 BxN+	K-Q1
6 PxP	PxP	17 BxP	PxP
7 P-K3	P-KR4	18 R-Q1+	B-Q3
8 B-Q3	N-B3	19 BxR	Q-B6+
9 P-QR3	Q-Q3	20 K-K2	B-B5+
10 KN-K2	B-K3	21 K-B3	R-R5
11 N-N3	NxP	22 Q-B6	R-B5#

DUTCH DEFENSE

(W) Leland Fuerstman (1888) NC
(B) George Carswell (2165) Fl

1 P-Q4	P-KB4	12 BxP	B-Q2
2 P-QB4	N-KB3	13 O-O	O-O
3 N-QB3	P-KN3	14 QR-K1	R-N1
4 B-N5	B-N2	15 P-QN3	K-R1
5 Q-Q2	P-Q3	16 P-B4?	P-Q4!?
6 BxN	BxB	17 PxP	PxP
7 P-K4	P-K4	18 B-N1	P-B3
8 N-KB3	PxQp	19 P-B5?	Q-N3+
9 NxQP	N-B3	20 K-R1	Q-N5
10 NxN	PxN	21 PxP	BxN
11 B-Q3	PxP	22 Q-R6	Q-K2



23 RxQ ?
RxRmate

FRENCH DEFENSE
RUBINSTEIN VARIATION
(W) Mark Becker (1579) NC
(B) George Harwell (1464) NC

1 P-K4	P-K3	6 KN-B3	B-K2
2 P-Q4	P-Q4	7 B-Q3	NxN
3 N-QB3	N-KB3	8 BxB	QxB
4 B-KN5	PxP	9 BxN	Q-N5+
5 NxP	QN-Q2	10 Q-Q2	QxNP?

Black gets behind in development as a result of this "Pawn grab".

11 0-0 QR-N1 12 P-QR4! ...

With the threat of 13 KR-N1!!

12 ...	Q-N3	17 N-K5	P-R3
13 KR-N1	Q-Q3	18 RxP!!	PxR
14 R-N5	N-B3	19 BxP+	K-K2
15 Q-Q3	P-QR3	20 N-B7	Q-B3
16 R-KN5	P-KN3	21 Q-R3+!	1-0

Black will lose his Queen.

QUEEN PAWN
(W) William Adams (1673) La.
(B) Harvey Cobaugh (1492) NC.

1 P-Q4	P-Q4	15 PxN	QxP
2 N-QB3	N-QB3	16 N-N1	Q-R5
3 N-KB3	B-N5	17 Q-Q3	0-0-0
4 P-KR3	BxN	18 Q-R3	QxQ+
5 NPxB	P-K3	19 NxQ	B-N5
6 P-K4	B-N5	20 K-N2	KR-K1
7 P-QR3	B-R4	21 B-Q3	R-Q3
8 B-K3	P-QR3	22 B-Q2	R-N3
9 Q-Q2	Q-B3	23 BxB	RxB+
10 B-K2	KN-K2	24 K-B3	R-R5
11 R-KN1	N-N3	25 R-QR1	P-N4
12 0-0-0	Q-K2	26 K-N3	RxP
13 PxP	PxP	27 NxP	RxB+?
14 P-N4	NxP		

27 ...PxN 28 R-R8+ K-Q2 29 BxP+ P-B3 looks better.

28 PxR PxN

The game looks even, but all of White's pawns are isolated. Notice how easily Black picks off the ones he wants and wins.

29 P-R4	R-K4	37 R-QN7	K-Q3
30 R-R8+	K-Q2	38 R-R6+	P-KB3
31 R-KN8	NxRP	39 R-KR7	P-B3
32 R/lxP	R-B4	40 R-R2	K-B4
33 RxRP	NxBP	41 R/7-KR7	P-N5+
34 R-KB8	K-K2	42 K-N2	N-B6
35 R-QN8	N-Q5+	43 R/2-R3	N-K4
36 K-B3	R-B5	44 P-Q4+	RxQP

White could just as well resign here.

45 R/3-R4	R-Q7+	52 R-R4+	P-Q5
46 K-N3	N-Q6	53 R-R5	RxP
47 R/4-R1	R-N7+	54 R-R3	P-N6
48 K-R4	K-B5	55 RxN	KxR
49 K-R5	R-R7+	56 RxP	R-QB7
50 K-N6	P-QB4	57 Resigns	
51 R-QB7	R-B7		

CENTER COUNTER GAMBIT
(W) Doug Taffinder (1710) SC
(B) Charles Watson (1537) NC

1 P-K4	P-Q4	4 B-B4	B-N5
2 PxP	N-KB3	5 P-KB3	B-B4
3 B-N5+	B-Q2	6 N-B3	P-B3?

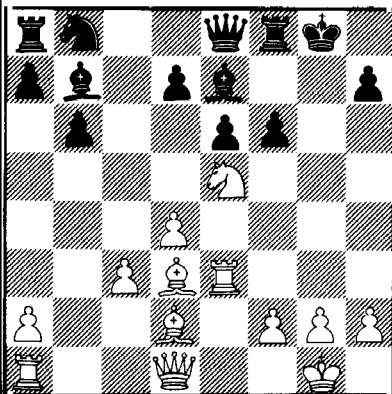
Chuck Braun gives 6...QN-Q2.

7 PxP	NxP	16 N-Q5!	B-Q1
8 KN-K2	P-K4	17 P-B3	N-B3
9 0-0	B-B4+	18 P-B5!	BxP
10 K-R1	0-0	19 B-KR6	R-K1
11 N-N3	B-KN3	20 Q-B3	P-K5
12 N(N)-K4	B-N3	21 QxB	QxQ
13 NxN+	PxN?	22 RxQ	PxP
14 P-B4!	N-Q5	23 BxQP	R-K3
15 P-Q3	Q-Q2??	24 R-B3!	N-K4

25 R-N3!	N-N3	29 NxN+	PxN
26 N-B4	R-Q3	30 B-B8	B-R5
27 B-QB4	K-R1	31 BxR	Resign
28 BxP!	P-B4		

SICILIAN DEFENSE
(W) Macon Shibut (2027) Va.
(B) Peter Henderson (1866) Va.

1 P-K4	P-QB4	9 PxN	B-K2
2 P-QB3	N-KB3	10 B-Q3	B-N2
3 P-K5	N-Q4	11 0-0	0-0
4 P-Q4	PxP	12 R-K1	P-KB4
5 PxP	P-K3	13 PxPep	PxP
6 N-KB3	P-QN3	14 R-K3	Q-K1
7 N-QB3	B-N5	15 N-K5!	...
8 B-Q2	NxN		



If 15 ...PxN? 16 BxP+ KxB 17 R-R3+ K-N2 B-R6+ and white mates soon.

15 ...	P-B4	17 NxN	BxN
16 P-QB4	N-QB3	18 P-Q5	B-N2

Of course, 18...PxP 19 Q-K2 R-B2 20 R-K1 and White will win a piece.

19 PxP B-KB3 20 BxP!! ...

Wins.

20 ...	BxR	23 Q-N4+	K-B3
21 R-N3+	B-N2	24 B-N5+	K-K4
22 RxB+	KxR	25 Q-B4 mate	

MODERN BENONI
(W) Gary Thornsill (1761) Va.
(B) Glenn Evans (1470) NC.

1 P-Q4	N-KB3	7 B-K2	B-N2
2 P-QB4	P-B4	8 N-B3	QN-Q2
3 P-Q5	P-K3	9 0-0	0-0
4 N-QB3	PxQP	10 Q-B2	P-QR3
5 PxP	P-Q3	11 P-QR4	R-K1
6 P-K4	P-KN3	12 N-Q2	Q-K2

The game has reached a position very similar to Spassky/Fischer game 3, the difference being that in this game the QR pawns have been moved. Fischer played ...N-R4! instead of Q-K2.

13 P-B3? ...

13 P-B4 would really cramp Black. The White KP is probably in no danger with the Black Queen on K2.

13 ...	R-QN1		
14 P-R5	N-K4	18 P-QN3	P-B4
15 N-B4	NxN	19 B-N3	PxP
16 BxN	N-Q2	20 PxP	N-N5
17 B-B4	N-K4	21 QR-K1?	...

21 R-B3

21 ...	B-Q5+	28 NxP	QxP
22 K-R1	N-K6	29 BxB	RxB
23 RxN	BxR	30 N-K6	B-K5
24 P-K5	B-B4	31 R-K1	R-R4
25 PxP	Q-Q2	32 N-B4	QxN
26 Q-Q1	B-Q5	33 P-Q6+	K-B1

White resigns as 34 R-B1 only looks good 34...RxP+ 35 K-N1 RxP+ 36 K-R K-RB7+ and wins.

COLLE
(W) Henry Cabaniss (1180) SC
(B) Matthew Spears (1340) NC

1 N-KB3	P-K3	5 0-0	P-QN3
2 P-Q4	N-KB3	6 QN-Q2	B-N2
3 P-K3	B-K2	7 P-B3	B-Q3 ?
4 B-Q3	0-0		

Black should play 7...P-Q4 to prevent White from playing P-K4.

8 Q-B2	P-N3	11 N-K4	BxB
9 P-K4!	B-B5	12 QxB	N-N2 ?
10 P-K5!			

Black had to play 12...BxN

13 N-B6+ Resigns

13...K-R1 14 Q-R6 and wins.

NIMZO-INDIAN
with colors reversed
(W) Mike McCann (1859) NC
(B) Donald Griffith (1902) WVa.

1 N-KB3	P-Q4	3 P-K3	N-QB3
2 P-QN3	P-QB4	4 B-N5!	B-Q2 ?

White is playing a Nimzo-Indian with first move, Black's position is very difficult. Probably best here is 4...P-K3.

5 0-0	N-KB3	7 KxBN	BxB ?
6 B-N2	P-K3		

7 ...PxB may be better.

8 N-K5	B-Q3	19 QR-K1	Q-R4
9 P-KB4	Q-B2	20 B-B1	K-N1
10 P-Q3	0-0-0	21 P-QR4	Q-B4
11 N-Q2	KR-N1	22 R-K2	P-R3
12 N/2-B3	N-K1	23 Q-R8	Q-K2
13 N-N5	BxN	24 R/2-B2	R-Q4
14 PxB	R-Q2	25 RxP	RxR
15 Q-R5	P-KN3	26 RxR	Q-B4
16 QxRP	R-N2	27 R-B2	RxP
17 Q-R3	P-Q5	28 B-B4	Resigns
18 PxP	PxP		

POLISH DEFENSE
(W) Ricky Bailey (1602) NC
(B) Franklin Helle (1673) MI

1 P-QN4	P-Q4	14 R-B3	P-Q5
2 B-N2	N-KB3	15 N-KB1	P-K4
3 P-KN3	B-B4	16 P-K4	PxPep
4 B-N2	P-K3	17 NxP	NxN
5 P-QR3	B-K2	18 RxN	BxN
6 N-KB3	P-KR3	19 PxP	PxP
7 P-Q3	0-0	20 Q-N4!	P-KN3
8 0-0	QN-Q2	21 R-K7	QR-Q1
9 QN-Q2	P-QB4	22 B-Q5	Q-Q3
10 P-N5	R-QB1	23 QR-K1	N-KB3
11 P-QB4	Q-B2	24 BxN	QxB
12 N-KR4	B-R2	25 RxNP	Q-Q5
13 P-B4	N-N5	26 K-N2?	K-N2

Better is 26 K-R1

27 P-R5 QxQP ?

Better is 27...P-N4 freeing the Bishop.

28 B-K4	QxBP	33 PxP+	K-B1
29 PxP	R-Q7+	34 Q-N8+	K-K2
30 K-R1	P-KR4	35 B-B6+	K-Q3
31 Q-N5	Q-B6	36 Q-Q8+	Resigns
32 RxP+	RxR		

RETI OPENING
(W) Clyde Davis (1361)
(B) Randy Grim (Unr)

1 P-Q3	P-Q4	4 B-N2	N-KB3
2 P-KN3	P-K4	5 0-0	P-KR3
3 N-KB3	N-QB3	6 N-B3	B-K3

7 B-Q2	B-K2	18 BxR	B-B4
8 P-QR3	Q-Q2	19 K-N2	K-Q1
9 P-K4	PxP	20 P-B4	B-Q5
10 QNxP	NxN	21 BxB	NxB
11 PxN	0-0-0	22 K-B2	K-K2
12 B-B3	QxQ	23 K-K3	N-B3
13 QRxQ	RxR	24 B-K2	P-B3
14 RxR	B-KN5	25 P-B5	K-Q3
15 R-Q3	BxN	26 P-KN4	K-B
16 BxB	R-Q1	27 P-KR4	P-Q1
17 B-K2	RxR	28 P-QN4+	N

Black sacrifices his Knight for a won endgame.

29 PxN	KxP	36 RxP	KxB
30 K-Q2	P-QR4	37 K-B2	K-R6
31 P-B3+	K-N6	38 K-Q3	K-N6
32 BxP	P-R5	39 P-R5	P-B4
33 K-Q3	P-R6	40 K-Q2	P-B5
34 B-B4+	K-N7	41 Resigns	
35 K-Q2	P-R7		

ENGLISH OPENING
(W) Russ Smith (Unr)
(B) William Moss (1260) NC

1 P-QB4	P-K4	4 P-Q4	KPxP
2 N-QB3	P-QB4	5 PxP	N-B3
3 P-K3	N-KB3	6 PxP?	BxP

White is getting behind in development he should have played 6 N-B3.

7 B-N5 ?? ...

Knights before Bishops, 7 N-B3.

7 ... 0-0 8 N-K2 ?

White should have taken advantage of his reprise with 8 N-B3.

8 ...	BxP+!	18 PxN	N-B6
9 KxB	N-N5+	19 K-K2	NxQ
10 K-K1	QxB	20 RxN	Q-K4
11 P-KR4	Q-R6	21 QN-K4	P-B4
12 R-R3	Q-B7+	22 B-N2	PxN
13 K-Q2	N-Q5!	23 NxKP	QxNP
14 N-K4	Q-KB4!	24 K-Q3	QxB
15 N-Q6	Q-R4+!	25 N-N5	P-KR
16 N-B3	N-B7	26 Resigns	
17 Q-K1	NxR		

SMITH-MORRA GAMBIT
(W) Harry Judy (1709) Va.
(B) Neal Harris (1611) NC.

1 P-K4	P-QB4	4 NxP	P-K3
2 P-Q4	PxP	5 N-B3	P-QR
3 P-QB3	PxP	6 B-QB4	Q-B2

Black should have played N-QB3 on move 5 or 6. The Black Q is not well posted on B2 because the file is open.

7 Q-K2	N-K2	16 NxP	Q-N1
8 0-0	N-N3	17 NxR	B-R3
9 B-N3	N-B3	18 R-KB3	P-R4
10 B-K3	P-N4	19 R-R3	P-R5
11 QR-B1	N-B5	20 P-B5	KN-K
12 Q-Q2	N-N3	21 RxP	N-Q6
13 N-Q4	B-Q3	22 Q-K2	N-B5
14 P-B4	0-0	23 Q-N4	N-K7
15 N4xNP	PxN	24 K-R1	QxN
		25 B-R6 ??	

25 P-B6! P-N3 26 R-R8+ KxR 27 Q-R4+ K-N1 28 Q-R6 and mates.

25 ...	Q-Q5	34 BxB	N8xB
26 Q-R5	NxR	35 R-R7	R-B2
27 B-K3	P-B3	36 Q-R5	K-B1
28 BxQ	NxQB	37 R-R8+	K-K2
29 Q-R7+	K-B2	38 RxR	PxP
30 Q-N6+	K-N1?	39 PxP	N-B8
31 R-N4	R-B2	40 R-R4	N5-K
32 R-R4	R/2-B	41 R-K4+	K-Q3
33 B-Q1	B-K7	42 RxN	Resigns

Tom Morris annotates

US JUNIOR CHESS CHAMPIONSHIP
Hollywood, California
June 1979

FRENCH DEFENSE
TARRASCH VARIATION
(W) Joel Benjamin (2353)
(B) Yasser Seirawan (2495)

1 P-K4 P-K3 5 B-Q3 P-QB4
2 P-Q4 P-Q4 6 P-QB3 N-B3
3 N-Q2 N-KB3 7 KN-B3! ...
4 P-K5 KN-Q2

Though not the best move (preferred is 7 N-K2), this seldom seen idea throws the game off the well-trodden trails of the Tarrasch French. The move also carries a psychological punch.

7 ... PxP 8 PxP N-N3?

Score one for White; Black misses the strongest continuation 8... Q-N3. White would then sac a pawn by 9 O-O NxQP 10 NxN QxN 11 N-B3 Q-N3 12 Q-R4!, but Black can equalize by returning the material through 12...Q-N5! 13 Q-B2 Q-B4 14 BxP P-QN3 15 B-B4 B-R3 16 KR-Q1 QxQ 17 BxQ N-B4 18 N-Q4 B-K2 = Furman/Uhlmann, 1967.

9 O-O B-Q2 11 B-N B-N4?
10 R-K N-N5

Black is wasting too much time; he should develop with either ...B-K2 or ...R-B1

12 N-B1 B-K2 13 N-N3 P-QR4?

Black cannot castle K-side and expect to survive, but he shouldn't create holes on the Q-side either. An alternative plan is to castle Q-side and either exploit the QB-file or launch a K-side assault with P-KR4.

14 N-R5 K-B1 15 P-KR4! ...

White vacates the KR2 square for the N so the Queen may invade the Black K-side via N4 or R5.

15 ... P-R3

White also threatens 16 N-N5. If 15...BxP 16 N-R2 with the idea of Q-N4.

16 N-R2 P-KN3 18 Q-N4 K-Q2
17 N-B4 K-K1

Black's King must run because of the devastating threat of 19 BxNP!

19 N-B3 Q-KN 20 B-Q2 R-QB

20...N-B5 looks more active, but Black still has his problems.

21 P-QR3 N-B3 23 B-R2 K-Q1
22 R-B1 R-B2

Black's position is in knots with no relief in sight. Either 22... N-B5 or 22...P-R5 seems to be better than the text.

24 RxN! ...

Removing a key defensive piece; Black's dark squares now come under fire.

24 ... PXR?!

Columbus Weekend Tournament

October 5-7

5-SS

Pompano Beach Recreation Center

1801 NE 6th St. Pompano Beach, Fl. (Off Route 1)

Open: \$15

Reserve (1599 & Below) \$10

Advance Entry Fee

\$1500

GUARANTEED
PRIZE FUND !!!

Open 300-200-100

Reserve 175-125-75

\$ 50 Upset prize in both sections

Top Woman and Unrated Prizes

Top Class Prizes

Rounds: Fri. 7:30 PM; Sat. 10-3; Sun 9-2

Registration ends 7 PM Friday

Time: 45/2

ENTER: D. Stone

Box 2004

Ft. Lauderdale, Fl. 33303

\$5 More at site

One Point Bye for first round if requested in
Advance

USCF & State Membership Required

Sponsored by the Pompano Beach Chess Club

No Smoking

24...RxR saves a tempo ie if 25 Bx RP K-Q2 with the idea of N-B5.

25 BxRP R-N2 27 P-N4 Q-K1
26 P-R4 B-R3

Black has to resurrect his dead pieces on the K-side before the Q-side collapses.

28 P-N5!

A neat little pawn sac that introduces the rest of White's Q-side pieces to Black's jumbled forces, but...

28 ... PxP 29 NxP! ...

This piece sacrifice strips the rest of Black's pawn shield.

29 ... PxN 32 BxQP QxQ
30 QxKP O-Q2 33 BxQ+ K-N1
31 BxN+ K-B1 34 PxP ...

Best. If the threatened Bishop moves then 34...P-N5! allows unnecessary counterplay.

34 ... BxNP

34 ...RxB 35 RxB RxP 36 P-Q5 and White's passed center pawn will cost Black too much material. The text loses the exchange immediately.

35 B-Q5 1-0 Game score from USCF.

WORLD OPEN
1979
Philadelphia, Pa.

MODERN BENONI DEFENSE
(by transposition)
(W) Browne (B) Ostos

1 P-Q4 N-KB3 5 P-K4 O-O
2 N-KB3 P-KN3 6 B-K2 P-Q3
3 P-B4 B-N2 7 O-O N-R3
4 N-B3 P-R4

Black could transpose into a Maroczy Bind Dragon by 7...PxP

8 P-Q5 N-B2 9 B-B4 P-QR3

Black wants to play ...P-QN4, but White is ready to break in the center.

10 P-K5 N-R4

10...PxP gives complete control of K5 to White.

11 B-K3 PxP 13 R-K1 N-Q3
12 BxP N-K1 14 Q-N3 ...

White has a decided positional advantage-Black has a weak doubled KP and the N on Q3 is his only active piece.

14 ... B-N5 16 BxB N-B5
15 P-KR3 BxN 17 B-N6! ...

White cannot win the QNP by 17 BxN QxB 18 QxP because 18...KR-N 19 Q-B6 QxQ 20 PxQ RxP gives Black play; White instead plans to strangle Black by taking away squares.

17 ... Q-K1 19 N-K2 ...
18 P-B5 N-B4

White clears his QB-file and also removes an active Black N.

19 ... NxN+ 20 BxN N-Q5

At last Black has something well placed, but his major pieces remain atrophied.

21 Q-B4 Q-Q2 22 QR-Q1 K-R1

The white QR leaves Black without much maneuvering room.

23 B-B1 P-K3 24 P-Q6 ...

The passed pawn puts Black on the defensive for the rest of the game

24 ... P-KN4

An ugly move which Black is forced to play because 25 P-KB4 is a tough move to meet.

25 R-K4 N-B3 26 P-QN4 P-B4

Black cannot sit back and watch White roll on with P-QR4,N5,etc.

27 R/4-K1 P-K5 30 PXP N-Q5
28 P-QR4 P-K4 31 Q-Q5! KR-B1
29 P-N5 PXP

31...NXP 32 BxN QxB 33 QxP leaves White unstoppable passed pawns; the text temporarily stops P-B6. White was threatening 32 RxN PXR 33 P-B6 and P-Q7 etc.

32 R-R1 B-B3 35 R-Q1 P-N5
33 RXR RxB 36 PXP Q-N2
34 B-B4 R-KB1

Black tries to drum up some action on the KN file, but ...

37 P-Q7 ...

White's advanced QP stymies everything.

37 ... Q-N4 39 QxP+ ...
38 P-Q8(Q) RxBQ

The removal of this key pawn leaves the N in big trouble.

39 ... B-B3 40 Q-Q6 1-0

If 40 ...Q-N2 41 P-B6! leaves Black with no hope: either the N drops or the pawn Queens. A splendid game exemplifying strategic planning.

GREATER NEW YORK OPEN July 21-22, 79 SICILIAN DEFENSE RAUZER'S ATTACK

(W) Jay Bonin (2333)
(B) Vitaly Zaltsman (2505)
with additional notes by Black.

1 P-K4 P-QB4 6 B-KN5 P-K3
2 N-KB3 N-QB3 7 Q-Q2 P-QR3
3 P-Q4 PXP 8 O-O-O B-Q2
4 NXP N-KB3 9 P-B4 P-N4
5 N-QB3 P-Q3

This move is the most popular alternative to 9...B-K2. I consider it more active.

10 NxN ...

10 BxN is the other most frequently played move.

10 ... BxN 11 Q-K1 ...

This move gives the threat of P-K5 a lot more meaning.

11 ... B-K2

To break the pin.

12 P-K5 (B-Q3!? VZ)

12 ... N-Q4 15 PXP O-O
13 BxB QxB 16 B-Q3 ...
14 N-K4 PXP

16 N-Q6 looks good but actually accomplishes nothing; it also makes the KP more vulnerable. 16 Q-N3! has been tried that game continued 16 ...N-N5! 17 N-B6+ K-R1 18 N-R5 R-KN1 19 P-QR3 N-Q4 unclear. Gufeld Tukmakov, 1972.

16 ... N-B5

The end of Boleskavsky's analysis; the players are now on their own.

17 R-B1 N-N3 18 Q-N3 Q-R5

White threatens to win with 19 NB6+ therefore Black must trade Queens.

19 QxQ NxQ 21 N-N5 B-Q4
20 P-KN3 N-N3

Black is in no hurry to capture the weak KP because White's position is slowly deteriorating.

On 21 ...NXP 22 BXP+ or 21...P-R3 22 NxKP - VZ.

22 QR-K1? (P-KR4 -VZ)

22 ... R-R2 25 P-R5 N-B1
23 P-KR4 P-R3 26 P-KN4 ...
24 N-B3 R-Q1

Now 24 NxBP would be a mistake because of 24...R(2)xN. -VZ
White hopes to open some lines on the K-side by exchanging a few pawns.

26 ... N-R2 28 P-R3 R-B2
27 BxN+ KxB 29 R-K3 ...

The game has dwindled to maneuvering on both sides, but White is plainly on the defensive.

29 ... R-B5 31 P-B3 R-B5!
30 P-N5 R/1-QB

Effectively tying down White's pieces.

32 K-Q2 R-B2 (...R/1-B5!?-VZ)
33 PXP KxB 36 R/3xR RxB
34 N-R2 R/2-B5 37 RXP ...
35 P-N3 R(QB)-K5

White's pawn weaknesses are permanent, therefore he strives for counterplay.

37 ... BxP

Black correctly takes the defendable pawns before the indefensible ones.

38 N-B3 B-B5 40 K-Q1?
39 R-R7 R-K7+

VZ gives this move a question mark suggesting 40 K-B1, however, on 40 K-B1 R-K6! 41 N-Q4 RxP+ still wins material.

40 ... R-QR7!

The threat of 41...B-K7+ wins the pawn, and control of the file.

41 N-Q4 RxP 42 R-K7 P-N5!

If 43 PXP R-Q6+ wins the N, but Black's passed pawn wins; White simply cannot stop it.

43 NXP P-N6

43...PXP? and White can block the pawn, this route will cost White a piece.

44 NXP R-R8+ 45 K-Q2 P-N7
White resigns.

GREATER NEW YORK OPEN

July 21-22

QUEEN'S GAMBIT DECLINED

(W) Walter Shipman (2374)
(B) Ruben Shocron (2282)

1 P-Q4 P-Q4 9 B-Q3 P-QN3
2 N-KB3 N-KB3 10 R-QB B-N2
3 P-B4 P-B3 11 O-O R-B1
4 PXP PXP 12 B-N1 R-K1
5 N-B3 N-B3 13 B-KN5 P-QR3
6 B-B4 P-K3 14 P-QR3 P-QN4
7 P-K3 B-K2 15 Q-Q3 ...
8 P-KR3 O-O

The Threat to Black's KR2 is easily parried, but the ensuing exchanges lead to a weakening of the Black pawn structure.

15 ... N-K5 21 Q-Q2 R-K2
16 BxB NxB 22 R-B1 R-B2
17 N-K5 N-N3 23 RxB QxR
18 NxN/6 RPN 24 Q-B3 QxQ
19 NxN PxB 25 PxQ K-B1?
20 RxB QxR

25 ...P-KN4!

26 P-KR4! K-K2 28 P-N5 B-Q4
27 P-KN4 P-B3 29 K-N2 K-Q3

30 K-N3 P-K4 35 K-N4 P-R4
31 PxBP PxBP 36 K-N5 B-B2
32 P-B3 P-B4 37 B-B2 P-R5
33 BPXP BPXP 38 B-N1 B-K1
34 PXP+ KXP 39 B-R2 ...

Black is in zugzwang.

39 ... K-Q3 41 K-K5 B-B3
40 K-B6 K-B4 42 B-B7 1-0

Notes by Shipman.

WILKES-BARRE

Aug. 18, 79

LATVIAN GAMBIT

(W) Greissman (1212)
(B) Tony Renna(1820)

1 P-K4 P-K4 4 P-Q4 P-Q3
2 N-KB3 P-KB4 5 N-KB3?? ...
3 NXP Q-B3

5 N-B4 is correct.

5 ... PXP 7 Q-K2 B-K2
6 B-KN5? Q-N3

7...B-K3 allows 8 Q-N5+ and 9 QxNP.

8 BxB PxB 9 Resigns

White must lose a piece.

WILKES-BARRE

LATVIAN GAMBIT

(W) Bob Urban (1438)

(B) Tony Renna(1820)

Notes by Black.

1 P-K4 P-K4 7 P-Q3 P-K5?
2 N-KB3 P-KB4 8 PXP PXP
3 N-B3 PXP 9 NXP QxQ+
4 QNXP P-Q4 10 KxQ O-O-O
5 N-N3 N-QR3 11 K-K1 BxN
6 B-N5 B-KN5 12 BxN?? ...

If 12 PxB N-Q5!

12 ... R-Q8 Checkmate.

MEMPHIS

July 13, 79

FRENCH POISONED PAWN

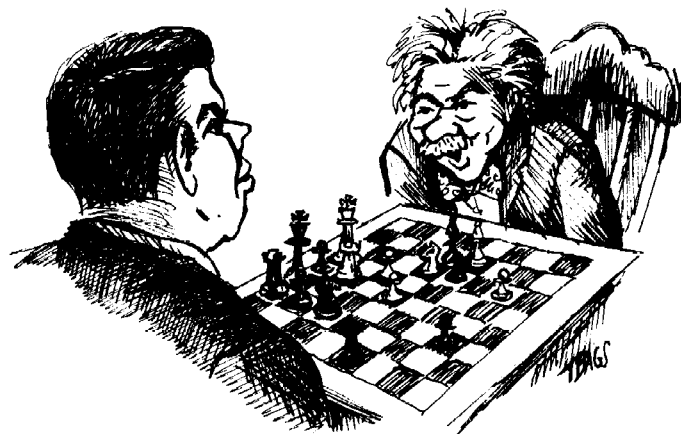
Euwe-Gligoric Variation

Notes by Mike Decker.

(W) John Hurt (1948) (B) J Wright

1 P-K4 P-K3 8 QxNP R-N1
2 P-Q4 P-Q4 9 QxRP PXP
3 N-QB3 B-N5 10 K-Q1 PXP
4 P-K5 P-QB4 11 N-B3 N/1-B
5 P-QR3 BxN+ 12 N-N5 NXP
6 PxB N-K2 13 P-B4 RxN
7 Q-N4 Q-B2

The crucial if not main line is 1 ...P-B3 14 B-N5+ B-Q2 15 NxKP Q-N 16 BxB+ KxB 17 PxB QxN 18 PXP QXF Decker/Blechar 1979 Draw.



"To flee, or not to flee: that is the question."

30 K-N3 P-K4 35 K-N4 P-R4
31 PxBP PxBP 36 K-N5 B-B2
32 P-B3 P-B4 37 B-B2 P-R5
33 BPXP BPXP 38 B-N1 B-K1
34 PXP+ KXP 39 B-R2 ...

Black is in zugzwang.

39 ... K-Q3 41 K-K5 B-B3
40 K-B6 K-B4 42 B-B7 1-0

Notes by Shipman.

WILKES-BARRE

Aug. 18, 79

LATVIAN GAMBIT

(W) Greissman (1212)
(B) Tony Renna(1820)

1 P-K4 P-K4 4 P-Q4 P-Q3
2 N-KB3 P-KB4 5 N-KB3?? ...
3 NXP Q-B3

5 N-B4 is correct.

5 ... PXP 7 Q-K2 B-K2
6 B-KN5? Q-N3

7...B-K3 allows 8 Q-N5+ and 9 QxNP.

8 BxB PxB 9 Resigns

White must lose a piece.

or 17...KxN(!) 18 Q-R3+ P-B4 19 QxP RxP is unclear.

14 PxB N/4-N3 17 K-K1 N-KB!
15 P-KR4 P-K4 18 B-N5+ B-B3
16 P-R5 B-N5+ 19 Q-Q3! ...

Black's position may be untenable here.

19 ... P-Q5 20 R-R4! ...

Rasmussen/Decker continued 20 Q-1 B-K3 21 P-N6 PXP 22 PXP and White soon won, however, 20 R-R4 looks even stronger.

20 ... B-K3 26 B-B6 B-N1
21 P-N6 PXP 27 R-K1 P-K5
22 PXP O-O-O 28 R/lxP Q-B4
23 B-N5 R-K1 29 R(R)-B4 QxP
24 BxN QxB 30 BXP 1-0
25 K-B2! Q-Q2

White controls the board, Black does not have compensation for the exchange or perpetual check.

SEPT 20
BRUCE RIND SIMO
CHATURANGA CHESS
CLUB

RAMBLING ALONG

BY ARNOLD DENKER

As they say these days, "first the good news". Atlanta has been awarded the U.S. Open for 1980. Under these circumstances I think it behooves all of us to do all we can to make it a real success. Please send Thad Rogers whatever you feel may be of assistance. He needs all the help he can get, as well as any financial contributions you may care to make.

Next it is my pleasure to announce that all financial arrangements have been completed for the Korchnoi-Browne match, which is planned for the latter part of this year in Miami. For this bit of good news we have Richard Fatigatti to thank. He has been working diligently for months to raise the necessary \$30,000.

I am writing all this from the US Open in Chicago, where I have spent the past two days attending the meetings. It is with a great deal of unhappiness that I must report that these meetings have become a most frustrating experience. For the amount of time and money expended far too little is being accomplished. I think most Delegates will agree that something must be done to better streamline these events so that greater progress can be made. I wish I knew what the answer is, but perhaps one idea might be the appointment of an Oversight Committee, to list issues for the agenda in their order of importance. Their function might also be to consider less vital issues for referral to a committee which in turn can make recommendations to the Policy Board. In this way we might just for once complete the agenda in a responsible way. The way things now stand, many important issues never come up and are left for the Policy Board with no recommendations by the Delegates.

I also want to take this opportunity to thank those who voted for me for Regional Vice President. I will try to justify your confidence by trying to turn our region into a more dynamic area with better events and greater communication. Send along any suggestions and you will find me ready to do all I can.

Here are some interesting games and positions from the US Open in Chicago. Please forgive the immodesty in the selection, but I think you will find them rewarding. It isn't very often that I feel that way about my games these days.

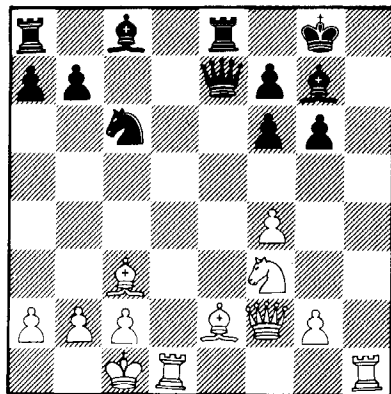
PIRC DEFENSE AUSTRIAN ATTACK

(W) A. Denker (B) R. Long
The following game is a good example of a big sac to attain a won end game.

1 P-K4	P-Q3	6 P-K5	KN-Q2
2 P-Q4	N-KB3	7 P-KR4	P-QB4
3 N-QB3	P-KN3	8 P-R5	BPxP
4 P-B4	B-N2	9 QxP	QPxP
5 N-B3	O-O	10 Q-B2	P-K5!

After Pxp White gets a fine attack as played by Tal.

11 NxP	N-KB3	15 B-Q2	Q-K2
12 NxNch	PxN	16 B-B3	N-B3
13 Pxp	R-K ch	17 O-O-O!	...
14 B-K2	RPxP		



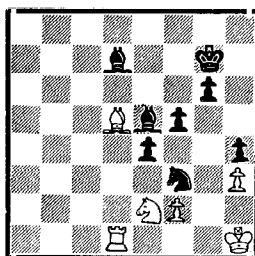
17 ...	QxB	19 RxB ch	B-B
18 QR-K	QxQ	20 BxP	B-R6!

The only defense.

21 RxB	Q-B8ch	24 BxB	KxB
22 R-K	QxRch		
23 NxQ	B-N2		

Here is my game with Georghiu a real heart breaker to lose.

Georghiu



Denker

Getting close to the time control and having repeated Bishop moves from N7-Q5 I thought Black had blundered and quickly played 50. BxP then with equal speed he played B-R5! I now must give Black the exchange. There followed BxN, BxR; and now N-Q4! draws at once. Because even if he plays BxN, BxB; BxP the Bishops of opposite color ending is a dead draw. Also his Bishop has no escape since if he plays B-R5 White plays B-B6. Needless to say I sealed K-N2 and lost after another 30 moves.

Florin Georghiu has had a good summer in America, he has won the US Open and tied for first at the World Open in Philadelphia

Here is another wild game, but this time with complications too difficult to fathom.

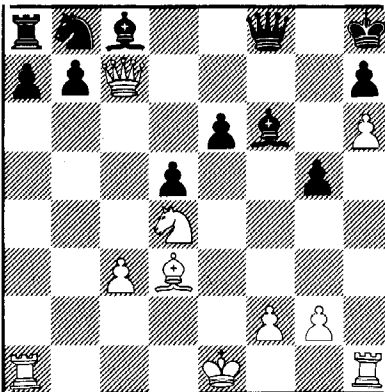
SICILIAN DEFENSE

(W) A. Denker (B) J. Barth

1 P-K4	P-QB4	4 NxP	N-KB3
2 N-KB3	P-K3	5 N-QB3	B-N5
3 P-Q4	PxP	6 Q-B3	...

The book says P-K5 with advantage to White, but I suspected analysis and having lost once before to my opponent I wanted revenge.

6 ...	P-Q4	13 B-KR6	P-KN3
7 P-K5	N-K5	14 P-R4	K-R
8 B-Q3	NxN	15 BxR	QxB
9 B-Q2	NxP	16 P-R5	P-KN4
10 P-B3	NxP	17 P-R6	P-B4
11 PxN	B-K2	18 PxpP	BxP
12 Q-N3	O-O	19 Q-B7	...



Threatening mate and tying up the Queen side.

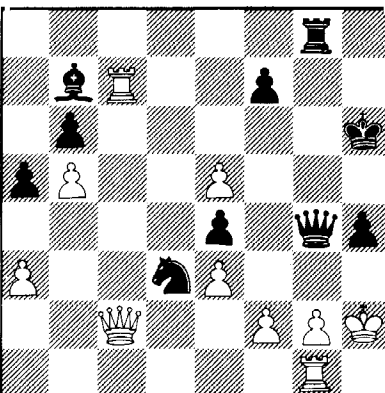
19 ... B-K2 20 O-O ...

Now the time has come to get the King to safety and shift to a positional win.

20 ...	P-R4	24 Q-N7ch	QxQ
21 KR-K	N-R3	25 PxQ ch	KxP
22 BxN	RxB	26 RxB	PxR
23 RxBP	B-Q3	27 NxP ch	1-0

White had no trouble winning.

Position of the game Saltzberg/Denker



Black continued...N-K8! and White gave up his Queen, and lost in a few moves. His best move would have been Q-B; P-R6 and White must play P-N3 because after QxN, Pxp and he cannot avoid mate.

Philadelphia

PHILADELPHIA INTERNATIONAL
July 9-18 1979
CATALAN SYSTEM

(W) Rohde (B) Rind

1 N-KB3	P-Q4	12 N(Q)-B5	P-KN3
2 P-KN3	P-QB3	13 N-R4	B-N2
3 B-N2	N-B3	14 N(R)-N2	N-N3
4 P-B4	PxP	15 Q-B5	KN-Q4
5 Q-B2	Q-Q4	16 NxN	NxN
6 N-B3	Q-KR4	17 O-O	P-KR4
7 N-Q	P-K4	18 P-Q3	P-R5
8 QxBP	P-K5	19 N-B4	NxN
9 N-Q4	R-R6	20 BxN	R-R4
10 N-K3	QN-Q2	21 Q-K3	P-KN4!
11 BxB	QxB		

If 22 BxP PxP 23 QxP QxQ 24 RPxQ RxB and Black wins a piece for a pawn.

22 QxP ch	K-Q2	24 QxP ch	K-Q3
23 Q-N4	PxB	25 QxR	R-R1!!

A very important and patient move which prevents White from variations like 25...RPxP Q-Q8+ K-K3 Q-B8+ K-B3 QxQ and Black's attack is gone or 25...RPxP 26 Q-Q8+ K-B4 27 KR-B1+ and the tide turns.

26 Q-N7 RPxP

Threatening mate on the move, of course.

27 Q-N4 ch P-B4 28 QxKBP+ B-K4!

The quietus.

NIMZO-INDIAN RUBINSTEIN VARIATION

(W) Rohde (B) Peters

1 P-Q4	N-KB3	5 N-K2	P-Q4
2 P-QB4	P-K3	6 P-QR3	BxN+
3 N-QB3	B-N5	7 NxR	PxQP
4 P-K3	P-B4	8 KPxB	PxP

Leaving White with an isolated QP.

9 BxP	N-B3	16 B-K5	R-B1
10 B-K3	O-O	17 KR-K	R-K
11 O-O	P-QN3	18 N-K4	NxN
12 Q-Q3	B-N2	19 RxB	P-B3
13 QR-Q	P-KR3	20 B-N3	P-B4
14 B-R2	N-K2	21 R-K5 ?	...
15 B-KB4	N(K)-Q4		

Better is 21 R(K)-K1.

21 ... Q-N4 22 P-B3 R-B8!

Taking advantage of White's error on move 21.

23 R(K)-K1	R/1-QB	25 QxP+	K-R1
24 Q-K2	RxB	26 RxB	N-K6!

Threatening P-B5 and NxR.

27 P-B4 Q-N5 28 R-K1 NxP!

Threatening NxR and NxP to be followed N-R6+.

29 QxR+	BxQ	41 K-N	Q-N8+
30 R-KB+	K-R2	42 K-R2	QxP
31 B-N8+	K-R	43 K-N2	P-N5
32 B-Q5dis+	K-R2	44 PxP	PxP
33 R-N8+	K-R	45 B-K6	Q-K7
34 B-B7dis+	K-R2	46 B-B5+	K-N2
35 KxN	P-KN4	47 R-B3	P-KR4
36 P-R3	Q-Q8	48 P-Q5	P-R5
37 RxB	Q-K7+	49 R-K3	P-R6!:
38 B-B2	Q-K5+	50 K-N3	Q-B8
39 K-N1	Q-N8+	51 B-K4	P-R7
40 K-N2	Q-K5+	52 P-Q6 ??	Q-R6#

52 KxNP QxB 53 R-N3 would have been interesting.

THE CHESSMAN SEPT-OCT. 1979

SICILIAN DEFENSE NAJDORF VARIATION			
(W) Gruchacz	(B) Gruenfeld		
1 P-K4	P-QB4	8 Q-B3	Q-B2
2 N-KB3	P-Q3	9 0-0-0	QN-Q2
3 P-Q4	PxP	10 B-Q3	P-R3
4 NxP	N-KB3	11 B-R4	P-KN4
5 N-QB3	P-QR3	12 P-K5	PxB
6 B-KN5	P-K3	13 PxN	NxP
7 P-B4	B-K2	14 P-B5!	...
14 KR-K1 is book, but P-B5 may be an improvement.			
14 ...	P-K4	28 Q-K4	P-R5
15 N/4-K2	B-Q2	29 R-QB3	Q-R2
16 B-K4	B-QB3	30 B-Q5	P-N5
17 N-Q5	BxN	31 RxP	Q-B2
18 BxB	R-QN	32 P-N5	BxP
19 N-B3	P-N4	33 P-B6+	K-B
20 B-N3	K-B	34 R-KN3	K-K
21 N-Q5	NxN	35 P-R4	B-B5
22 QxN	B-N4+	36 BxP+!!	QxB
23 K-N	R-N3	37 R-N7	QxP
24 R-Q3	B-B3	38 Q-R8+	Q-Q1
25 KR-Q	K-N2	39 Q-R7	Q-B3
26 P-KN3	P-R6	40 R-QB7	B-K6
27 P-KN4	P-QR4	41 R-B8+	Q-Q1
		42 RxQ+	KxR
		43 Q-R8+	1-0

SICILIAN DEFENSE NAJDORF VARIATION			
(W) Lyman	(B) Burger		
The same first 6 moves as in the game above, and then--			
7 P-B4	Q-B2	8 Q-B3	...

8 B-Q3 is a very strong alternative for White as in Spassky-Rashkovsky USSR Championship 1973 which continued 8...QN-Q2 9 Q-K2 P-N4 10 0-0-0 B-N2 11 KR-K1 B-K2 12 P-K5! PxP 13 PxP N-Q4 14 BxB NxN 15 Q-N4 NxR 16 N-KxP Q-B3? 17 N-KP+ KxB 18 Q-N5+ P-B3 19 PxP+ K-Q 20 Q-B4+ 1-0.

8 ...	P-N4	11 BxN	NxB
9 P-QR3	QN-Q2	12 P-K5	B-N2 ?
10 0-0-0	R-QN1		

12...B-Q2 would have been more consistent with Black's 10th move.

13 Q-K3	PxP	23 R-Q7	K-N
14 N/3P+!!	PxN	24 P-QR4	P-R4
15 BxP+	K-K2	25 P-R5	K-R2
16 N-B6+!	BxN	26 RxP	K-N3
17 Q-B5+	K-K	27 R-K7	K-B3
18 BxB+	N-Q2	28 R-Q7	KR-QB1
19 RxN+	BxQ	29 B-N7	R-B4
20 RxQ	K-B1	30 P-R6	R-R4
21 PxP	B-Q5	31 K-B2	1-0
22 P-B3	BxKP		

King's Indian Defense			
(W) Delva (2044)	(B) John Jarecki (age 10)		
1 P-Q4	N-KB3	7 KN-K2	R-K1
2 P-QB4	P-KN3	8 Q-Q2	R-N1
3 N-QB3	B-N2	9 0-0-0	P-QR3
4 P-K4	P-Q3	10 P-KN4	P-QN4
5 P-B3	0-0	11 P-N5	N-Q2
6 B-K3	N-B3	12 P-KR4	N-N3
		13 PxP ?	...

White should play 13 N-N3 and not allow Black's N to get to B5.

13 ...	N-B5!	20 N-K3	P-QB4
14 Q-Q3	PxP	21 N-B2	NxN
15 B-B2	B-QR3	22 KxN	R-QB1
16 Q-B2	P-N5	23 K-N1	P-B5
17 N-Q5	N/3-R4	24 R-B1	PxP
18 P-N3	N-R6	25 PxP	B-Q6+
19 Q-N2	P-QB3	26 K-R2	R-R1

White Resigns 27 Q-Q2 N-B5 mate, 27 Q-R3 is the only way to stop mate

KING'S INDIAN DEFENSE			
(W) Gheorghiu	(B) Hertan		
1 P-Q4	N-KB3	4 P-K4	P-Q3
2 P-QB4	P-KN3	5 P-B3	P-QB3
3 N-QB3	B-N2	6 B-K3	P-QR3 ?
6...P-K4 is better, now White will make Black move his QR pawn again.			
7 P-QR4!	P-QR4	10 KN-K2	P-K4
8 B-Q3	N-R3	11 Q-Q2	N-Q2
9 R-B1	0-0	12 0-0	...

Much safer than in the previous game where White put his King on the Queen side.

12 ...	PxP	31 Q-N2	K-R1
13 NxP	N/2-B4	32 R-K3	Q-B3
14 B-QB2	N-N5	33 QxQ	NxQ
15 QR-Q1	Q-B2	34 PxP	PxP
16 B-N1	P-N3	35 BxP	R-N1+
17 B-R6	BxB	36 K-B2	R-R7+
18 QxB	B-R3	37 K-B3	NxP
19 P-QN3	P-Q4	38 R-K6	R-KB1
20 KPxP	PxP	39 K-N3	R-R4
21 N/4-N5	BxN	40 B-N4	N-Q1
22 NxR	Q-B3	41 BxR	NxR
23 P-B4	P-B4	42 P-B5	N-N7
24 P-R4	QR-Q1	43 R-KR1	N-B4
25 P-R5	Q-B3	44 N-Q6	P-R5
26 PxNP	RPxP	45 K-B4	N/7-Q6+
27 QR-K1	R-B2	46 K-N5	K-N1
28 Q-R3	PxP	47 B-B3	K-N2
29 PxP	R/2-Q2	48 P-B6+	1-0
30 P-KN4	R-KR2		

On 48...RxP 49 N-KB+ and on K-N1 49 B-Q5+.

WORLD OPEN June 30-July 4			
(W) L. Sukienik (1661)	(B) M. Kabat (1647)		
1 P-K4	P-QB4	19 P-KN4	P-QR6
2 N-KB3	N-QB3	20 P-QN3	P-KN3
3 P-Q4	PxP	21 B-K4	N-Q2
4 NxP	P-Q3	22 P-KR5 ?	P-KN4!
5 N-QB3	P-QR3	23 N-Q3	P-KR3!
6 B-K3	N-KB3	24 Q-N4	KR-QB
7 P-KB3	P-K4	25 P-QB4	N-QB4
8 N-QN3	B-K2	26 NxN	QxN
9 Q-Q2	0-0	27 Q-Q2	P-QN4
10 0-0-0	B-K3	28 QR-QB1	Q-N3
11 N-Q5!	BxN	29 PxP	QxP
12 PxB!	N-N1	30 QR-QB2	RxR
13 B-Q3	N/1-Q2	31 BxR	QR-QB1
14 B-KB5 ?	N-QN3	32 B-Q3	Q-QB4 ?
15 BxN	QxB	33 R-QB1	QxR+
16 P-KR4	P-QR4!	34 QxQ	RxQ+
17 K-N	P-QR5	35 KxR	B-Q1
18 N-QB1	Q-QB2		

Black has traded down to a Bishop of the opposite color ending which must be a "Dead Draw" right? Wrong, watch this.

36 P-QN4!:	B-N3	44 K-R4	K-Q2
37 K-B2	B-Q5	45 P-QN6!	K-B1
38 K-N3	B-N7	46 K-N5	K-N1
39 P-QN5!	B-Q5	47 K-B6	K-B1
40 KxP	K-KB1	48 P-QR6!	K-N1
41 K-N4	B-N3	49 P-R7+	K-R1
42 P-QR4	K-K2	50 B-QR6!	1-0

Notes by the winner.

SICILIAN DEFENSE			
(W) Angantysson	(B) Kavratsky		
1 P-K4	P-QB4	9 N-B3	P-B3
2 N-KB3	P-KN3	10 B-B4	PxP
3 P-Q4	PxP	11 BxP	BxB
4 QxP	N-KB3	12 QxB	N-B3
5 B-QN5	N-B3	13 KR-K1	K-B1
6 BxN	NPxB	14 N-K4	P-Q3
7 P-K5	N-N1	15 QR-Q1	B-B4
8 0-0	B-N2	16 NxP	1-0

After 16...PxN 17 RxP Q-any and 18 RxN+ with mate soon.

PIRC DEFENSE			
(W) Barth	(B) Seirawan		
1 P-K4	P-KN3	2 P-Q4	P-Q3
2 P-Q4	P-KN3	3 N-QB3	
3 P-KR3	P-QB3	4 P-Q5	N-K4
4 0-0	0-0	5 P-N4	B-K3
5 Q-Q2	12 P-KB4	6 N-K2	
6 P-B3	BxN	7 B-N2	N-KB3
7 Q-B2	17 B-N2	8 KN-K2	
8 R-K1	R-K1	9 P-R5	N/3-Q2
9 N-B1	22 N-N5	10 Q-N	23 BxB
10 P-N4	N/4-Q2	11 P-R2	P-QR3
11 K-N	27 N-B3	12 Q-B2	28 B-B
12 B-Q3	P-K4	13 PxPep	RxP
13 32 N-K4	P-Q4	14 PxP	QxBP
14 N-K4	35 R-KB2	15 N-B6+	36 Rch
15 N-B6+	K-N2	16 N-K8	db1
16 Q-N7+	K-N4	17 Q-K7+	K-B5
17 K-Q6	42 QxQ+	18 KxQ	43 N-B6
18 K-K5	42 QxQ+	19 K-R2	Q-B2
19 KxK	47 N-B3+	20 (Also good is	P-K7)
20 K-K4	48 P-K7!	21 R-Q7+	49 K-N

CLOSED SICILIAN			
(W) Day	(B) Angantysson		
1 P-K4	P-QB4	7 B-N2	N-K2
2 P-KB4	P-KN3	8 N-KB3	QN-B3
3 P-O3	B-N2	9 0-0	B-K3
4 P-KN3	P-Q4	10 R-K1	Q-Q2
5 P-K5	P-B3	11 P-Q4	PxP
6 PxP	PxP	12 NxP	NxN

Black has come out of the opening well developed but with an isolated Queen pawn.

13 QxN	0-0	16 B-K3	KR-QB1
14 N-B3	B-B2	17 Q-R3	P-Q5 ?
15 Q-B5	KR-K1		

Now the Queen pawn is very weak.

18 QR-Q1	P-B4	20 N-N5	B-Q4 ??
19 B-B2	N-B3		

Loses the exchange immediately 20...B-B1 takes advantage of the minimum number of squares for the White Queen.

21 Q-Q6!!	QxQ	22 NxQ	BxB
-----------	-----	--------	-----

Black's moves are forced because his Queen and Bishop are unprotected. For instance 22...R-Q1 23 BxB+ K-B1 24 BxN and White goes a piece up.

23 NxR+	B-B6	26 N-K7+	K-B2
24 R-KB+	B-B1	27 RxR	BxN
25 R-Q3	B-K5	28 RxQP	1-0

KING'S INDIAN DEFENSE			
(W) Bonin	(B) Pelts		
1 N-KB3	N-KB3	7 N-B3	P-K4
2 P-Q4	P-KN3	8 P-K4	P-B3
3 P-KN3	B-N2	9 P-KR3	PxP
4 B-N2	0-0	10 NxP	R-K1
5 0-0	P-Q3	11 B-B4	Q-K2 ?

11...N-K4 would give Black more room, and the K2 square is too sensitive for the Black Queen.

12 Q-Q2	P-QR4	20 P-K5!	PxP
13 KR-K1	N-K4	21 NxN	NxN
14 P-N3	KN-Q2	22 PxP	RxKP
15 B-R6	BxB	23 R-KB1!	Q-K2
16 QxB	P-R5	24 RxP!	QxR
17 P-B4	N-Q6	25 RxR	RxP ?
18 R-KP	N/2-B426	Q-K3!	1-0
19 NxRP	Q-B3		

White defends his King and threatens 27 R-K8+ K-N2 28 R-K7 or 27 RxN.

KING'S INDIAN DEFENSE			
(W) Gheorghiu	(B) Ginsburg		

1 P-Q4	N-KB3	2 P-QB4	P-KN3	3 N-QB3	B-N2	4 P-K4	P-Q3	5 P-B3	0-0	6 B-K3	P-K4	7 P-Q5	P-B3	8 B-Q3	PxP	9 BPxP	N-R3	10 KN-K2	B-Q2	11 0-0	N-B4	12 B-B2	P-QR4	13 P-QR3	P-QN4	14 P-QN4	N-R3	15 R-QN	P-R5	16 B-Q3	Q-N1	17 Q-Q2	N-B2	18 R(N)-B1	Q-N2	19 P-R3	N/3-K1	20 P-B4	P-B4	21 BPxP	QxP	22 B-B5	R-B2	23 PxP	PxP	24 B-N1	R-R3	25 P-Q6!	N-K3	26 B-R2	K-R	27 N-N3	NxB	28 PxN	R-KB3	29 Q-Q5	QxQ	30 NxQ	B-R3	31 P-B6!	RxP	32 RxR	BxR	33 NxR	NxN	34 NxP	B-B5	35 P-N3	B-N4	36 P-R4	B-Q7	37 N-K7	B-K6+	38 K-R2	N-N5+	39 K-R3	B-Q2	40 R-B8+	K-N2	41 R-B7+	K-R	42 N-N6+!	1-0.
--------	-------	---------	-------	---------	------	--------	------	--------	-----	--------	------	--------	------	--------	-----	--------	------	----------	------	--------	------	---------	-------	----------	-------	----------	------	---------	------	---------	------	---------	------	------------	------	---------	--------	---------	------	---------	-----	---------	------	--------	-----	---------	------	----------	------	---------	-----	---------	-----	--------	-------	---------	-----	--------	------	----------	-----	--------	-----	--------	-----	--------	------	---------	------	---------	------	---------	-------	---------	-------	---------	------	----------	------	----------	-----	-----------	------

SICILIAN DEFENSE NAJDORF VARIATION			
(W) Kudrin	(B) Browne		
1 P-K4	P-QB4	2 N-KB3	P-Q3
2 P-K4	NxP	N-KB3	5 N-QB3
3 P-K3	P-K4	7 N-N3	B-K3
4 9 Q-Q2	P-QN4	10 N-Q5	BxN
5 N-N3	12 BxN	QxB	13 0-0-0
6 P-KN4	B-K2	15 K-N	0-0
7 P-N5	17 P-R5	P-R3	18 Q-Q3
8 Q-B5	14 R-Q2	20 N-N5	Q-N2
9 Q-R2	22 KR-N	R-R2	23 N-Q2
10 R-R	P-R5	25 Q-Q3	P-R6
11 27 N-K4	NxN	28 QxN	B-N4
12 R-K6	30 Q-Q3	B-B5	31 Q-B5
13 R-Q3	Q-B4	33 Q-Q7	B-N4
14 R-B2	35 Q-K4	R-N4	36 Q-QB4
15 PxQ	R-B4	38 B-N5	P-N3
16 40 R-R	K-N2	41 R-R2	B-B5
17 RxBP	43 BxR	RxB	44 R-K
18 R-K4	RxR	46 PxR	K-N4
19 48 RxP	KxP	49 K-R2	P-R4
20 P-R5	51 K-K2	P-R6	52 K-B1
21 RxQR	P-R5	54 R-Q3	P-N5
22 B-N4	56 P-R5	B-Q	57 P-R6
23 R-QN3	B-Q5	59 R-N4	K-N6
24 B-R2	61 R-B4	K-B6	62 R-B3+
25 R-B4+	K-B6	64 R-B3+	K-B5
26 B-Q5	66 P-R7	BxP	67 RxR
27 R-Q7	K-N6	69 RxP	K-R7
28 P-N6	71 P-Q6	P-N7+	72 K-B2
29 73 KxP	P-N8(Q)	74 RxQ	KxR
30 77 R7	76 P-Q8(Q)	77 Q-Q1+	K-R2
31 78 Q-R5+	K-N8	Draw.	

QUEEN PAWN GAME	
(W) Gheorghiu	(B) Day
P-Q4	N-KB3 2 P-QB4 P-Q3 3 N-QB3
-B3 4 P-K4 P-K4 5 N-B3 Q-R4 6	
-Q3 B-N5 7 B-K3 QN-Q2 8 P-KR3	
-R4 9 P-KN4 B-N3 10 N-Q2 P-KR4 11	
-N3 Q-Q2 12 P-N5 N-R2 13 R-N B-K2	
4 P-KR4 N(R)-B 15 P-Q5 P-QB4 16	
-Q2 P-B3 17 N-B3 B-B2 18 PxP BxP	
9 N-KN5 P-R3 20 B-K2 BxN 21 BxK	
-B3 22 Q-Q2 Q-K2 23 0-0-0 N/1-Q2	
4 R-N3 0-0-0 25 R/1-N R-KR2 26	
-B R-B 27 N-Q B-K 28 Q-R5 K-N 29	
3 R-K-B 30 Q-N6 K-N 31 Q-R5 K-B	
2 R-N3 Q-Q3 33 QxQ KxQ 34 RxP K-B	
5 R-R7 K-N 36 RxP NxP 37 N-B3	
-N2 38 NxN KxR 39 NxQP N-B3 40	
-B5 R/2-R 41 B-K3 P-N3 42 B-B8+	
-N3 43 NxN NxN 44 B-K6 N-Q3 45	
-N4 NxP 46 BxP+ K-B2 47 RxP R-B5	
R-N7+ K-N 49 P-Q6 R-Q 50 B-R7+	
-O.	

12 ... BxN 15 P-N3 R-B4
13 BxP BxKB 16 B-K3 R-KR4
14 KxB RxB 17 P-B3? ...

Better would be P-KR4.

17 ... Q-Q2 19 PxN QxP+
18 P-KN4 NxP!! 20 K-R1 ...

If K-B2 Q-R5+

20 ... Q-KR5 21 B-B4 ...

Giving back the piece, but what else?

21 ... P-K4 30 Q-N2 B-K2
22 B-N3 QxB 31 QxP+ K-R2
23 P-K3 B-R3 32 R/2-Q2 BxN
24 QR-K K-N2 33 RxB RxB
25 R-B2 R-B 34 QxR Q-K5+
26 N-K4 Q-R5 35 K-N R-N4+
27 NxP R-Q 36 K-B Q-B6+
28 R/1-KB P-B4 37 K-K QxP+
29 R-Q B-N4 38 K-B R-N8#

QUEEN'S GAMBIT ACCEPTED POST 596 TOURNAMENT July 25, 1979

(W) Jim Porter (UNR)
(B) S. Trueman (1693)

1 P-Q4 N-KB3 8 BxN QxB
2 P-QB4 P-K3 9 O-O P-K4
3 N-QB3 P-Q4 10 P-Q5 N-Q5
4 B-N5 PxB 11 Q-R4+ P-B3!
5 P-K4 B-N5 12 QxB NxN+
6 BxP N-B3 13 PxN B-R6
7 N-B3 P-KR3 14 N-K2 QxP
White Resigned.

SIMULTANEOUS
SMITH MORRA GAMBIT
(W) David Brown (1664)
(B) Bob Bond (2075)

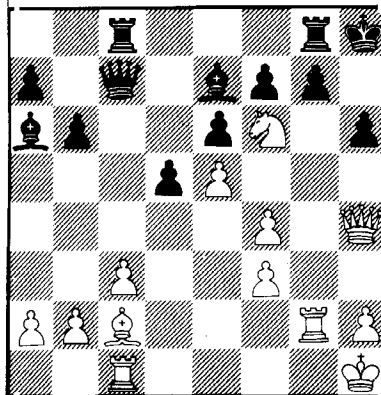
1 P-K4 P-QB4 3 P-QB3 P-Q6
2 P-Q4 PxB

Black spends a tempo to prevent White from a full pawn center.

4 N-KB3 N-QB3 6 QN-Q2! ? ...
5 BxP P-Q3

Best for White may be 6 P-B4! transposing into a Maroczy Bind.

6 ... N-B3 17 N-R5 NxN+
7 O-O P-K3 18 PxN! ? B-K2
8 Q-B2 B-K2 19 P-KB4 P-Q4
9 R-Q Q-B2 20 Q-N4 B-KB1
10 N-B O-O 21 P-K5 B-R3
11 B-KN5 P-KR3 22 R-Q2 K-R
12 BxN BxB 23 P-B3 QR-B1
13 Q-K2 P-QN3 24 R-N2 B-B4+
14 N-N3 B-N2 25 K-R1 R-KN1
15 B-B2 KR-Q 26 Q-R4 B-K2
16 QR-B N-K4 27 N-B6!! ...



A real shot, the threat is 28 RxB RxB 29 QxP+ R-R2 30 QxR mate.

2' ... Q-Q1 28 RxF! 1-0

60th SOUTHERN OPEN SMITH-MORRA GAMBIT DECLINED

June 30, 79 Notes by
Tampa, Fla. White
(W) John Morash (1839)
(B) James Randolph (1631)

1 P-K4 P-QB4 7 N-R3 P-QR3
2 P-Q4! ? PxB 8 O-O N-KB3
3 P-QB3 P-Q6 9 P-K5! ? PxB
4 BxP P-Q3 10 PxB NxP
5 P-KB4 N-QB3 11 NxN QxN
6 N-B3 Q-B2 12 N-QB4 Q-B2

Not 12...Q-KR4? 13 QxQ NxQ 14 N-N6
R-QN1 15 B-K2 N-B3 16 B-KB4 P-K4 17
BxP B-B4+ 18 K-R1 winning the ex-
change.

13 B-B4 Q-Q1 14 Q-K1 P-K3
Not 14...QxB 15 N-Q6+ winning. For
Black after the game Randolph sugges-
ted 14 ...B-K3.

15 R-Q1 N-Q4 17 K-R O-O
16 B-K4 B-B4+ 18 Q-N3 P-KB3

18 P-KB4 is better.

19 P-QN4 B-K2? ! (B-R2)
20 B-R6 R-B2 21 N-K5! Q-B2

If 21 ...PxN 22 RxB wins.

22 BxRP! K-B1

If 22 KxB 23 Q-N6+ and mate in 2 or
if 22 ...K-R1 23 NxR+ and 24 QxNP#.

23 RxB Resigns

If 23 ...PxR 24 N-N6+ K-K 25 QxQ!!
or 23 ...PxB 24 Q-N8#
or 23 ...PxN 24 QxNP+ K-K 25 QxR#.

SICILIAN DEFENSE SCHEVENINGEN VARIATION RAUZER'S ATTACK SECOND GULF COAST OPEN

June 10, 1979
(W) John Morash (1839)
(B) Michael Rohde (2426)

Notes by the winner
1 P-K4 P-QB4 9 P-KB4 Q-B2
2 N-KB3 P-K3 10 B-K2 P-QN4
3 P-Q4 PxB 11 B-B3 P-N5
4 NxP N-KB3 12 N/3-K2 B-N2
5 N-QB3 P-Q3 13 N-KN3 R-QB
6 B-KN5 B-K2 14 KR-K1 N-N3
7 Q-Q2 P-QR3 15 N-R5 R-KN1
8 O-O-Q QN-Q2

If 15 ...NxN 16 BxB QxB 17 N-B5!
or 15 ...NxN 16 BxB N-B3 17 BxN PxB
with a slight advantage to White.

16 NxN+ PxN 18 P-KN4 N-B5
17 B-R4 K-B 19 Q-B2 K-K

Why? I still don't understand
these mysterious King moves.

20 B-N3 P-QR4 22 P-B5 P-K4
21 P-KN5! ? PxB 23 P-B6 B-B1

If 23 ...BxP 24 B-N4.

24 B-N4 PxN 28 QxQP B-K3
25 BxR BxB 29 RxB R-N3
26 P-K5! PxB 30 R-QN5 R-R3
27 BxP NxB 31 R-N7 Q-B

Of course, If 31 ...QxR?? 32 Q-Q8#

32 Q-N6 RxBP 33 R-N8? ! ...

33 Q-N5ch! is best 33 Q-N5+ B-Q2 34
QxB+ QxQ 35 R(7)xQ and mates at Q8.

33 ... RxBP+ 34 K-N B-KB4

35 RxQ+ ?! ...

Again not the best move. 35 Q-Q8+
or 35 R-Q8+ and mates in one. I
have my mind on winning his Queen.

35 ... RxB Dis. Ch.
36 K-R1 ...

Now the threat is 37 Q-N5+ and there
is no effective way of meeting
it. If 36...B-Q2 37 Q-N7 R-Q 38 R-K
1+ B-K3 39 Q-B6+ R-Q2 40 Q-BB+ R-Q
41 RxB+.

36 ... B-B4 38 QxB+! K-K1
37 Q-N5+ K-B1 39 Q-K7 mate.

POSTAL 78-79 KING'S INDIAN DEFENSE PETROSIAN VARIATION

(W) Mike Johnson (A) California
(B) Tom Morris (A) Georgia

1 P-QB4 N-KB3 5 P-K4 O-O
2 N-QB3 P-KN3 6 B-K2 P-K4
3 N-B3 B-N2 7 P-Q5 P-QR4
4 P-Q4 P-Q3

This variation, an active way to
fight the Petrosian Variation (7 P-
Q5), has been attributed to the
late GM L. Stein. The variation has
been championed by E. Geller.

8 O-O

This move, though not as active
as 8 B-N5, is still quite dangerous
if not taken seriously, thanks to
L. Polugayevsky.

8 ... N-R3 10 B-R4 Q-K1
9 B-N5 P-KR3 11 BxN? ...

Mike commented that he wanted
to take me "Out of the books", but
he is actually giving me his good
Bishop without a fight. 11 N-K is
the preferred continuation.

11 ... BxB 13 N-Q3 P-KB4
12 N-K1 B-N2 14 P-B3 ...

14 P-B4! ? , which challenges Black's
K-side offensive, looks interesting

14 ... P-N3

Preparing to barricade the Q-
side by moving the N to H4 before
proceeding on the K-side.

15 P-QN3?

This move simply waste a tempo;
White should play 15 P-QR3 threat-
ening P-QN4.

15 ... N-B4 16 NxN ...

Again, P-QR3 should be played.

16 ... NPxN

With the Q-side braced against
breaks, Black can now focus his
attention on the K-side.

17 Q-B2 P-B5 19 R-KN1 P-R4
18 K-R1 P-N4 20 P-QR3 ...

Finally, but this move is a lit-
tle late. However, this move does
prepare to defend the second rank.

20 ... B-Q2

This move fully mobilizes Black,
and prevents any White N maneuvers
on the Q-side.

21 B-Q B-R3 22 R-R2 K-R2

23 Q-Q2? ...

White cuts off his only counter-
play, P-KN3, by moving into a pin.

23 ... P-N5

It's now or never.

24 Q-Q3 Q-B1! 25 R-K1 ...

I believe that 25 P-N3 is the
only active way to counter the
pawnroller. Other moves seem pas-
sive.

25 ... P-N6!

Black wants to open the KN file
and bring the Queen over to the KR
file to trap the King.

26 N-K2 ...

If 26 P-R3 BxP! 27 PxB QxP+ 28 K-N
R-KN 29 R/1-K2 P-R5! followed by
Q-Q2, P-R6 and White cannot survive
the passed-pawn roller.

26 ... R-KN1

A good waiting move; Black sho-
uld not move his Queen until White
commits his KR-Pawn.

27 PxB? ...

This blunder is decisive. The
KR-Pawn must remain uncommitted.
Now the Black Queen will come in
via KR5 to KR7 with decisive re-
sults.

27 ... PxB 28 R-B1 Q-Q1
29 O-1

Notes by the winner.

JULY JUBILEE Columbia, SC July 28, 79 SMITH MORRA GAMBIT

(W) Michael Ameen (1774)
(B) Frank Kelley (1736)
Notes by C.E. Braun

1 P-K4 P-QB4 3 P-QB3 PxB
2 P-Q4 PxB 4 NxP ...

White can continue in true Danish
style with 4 B-QB4 PxB 5 BxNP P-K3
6 N-KB3 B-N5 7 QN-Q2.

4 ... P-K3 (4 ...N-QB3 is bet-
ter.)

5 N-B3 B-N5 6 Q-Q4 BxN+

Again, 6...N-QB3 is better. White
now can complete his development
and take full advantage of his ex-
tra time to launch a decisive at-
tack.

7 QxB N-KB3 15 B-B4 R-K1
8 B-KN5 P-Q3 16 R-K2+ K-N3
9 P-K5 PxB 17 P-KR4 RxB+
10 R-Q1 QN-Q2 18 KxR P-N5
11 B-N5 N-Q4 19 P-R5+ K-B4
12 RxB P-B3 20 Q-Q3+ K-B3
13 RxB PxB 21 Q-Q6+ K-B4
14 RxB+ K-B2 22 B-Q3 mate.

THE LPO ALEKHINE'S DEFENSE (W) Darryl Ferguson (990!) (B) Bradley Fowler (1373)

1 P-K4 N-KB3 7 N-K2 O-O
2 P-K5 N-Q4 8 O-O N-B3
3 P-QB4 N-N3 9 N/1-B3 R-K1
4 P-Q4 P-Q3 10 B-K3 B-N4
5 PxB KPxB 11 Q-Q2 BxB
6 B-Q3 B-K2 12 PxB! N-N5

13 R-B2 NxB 17 QR-KB1 P-KB3
14 QxN Q-N4? 18 Q-N3 RxB
15 P-K4 N-Q2 19 RxB RxB
16 N-Q5: Q-Q1

Better, but not much, was 19...
NxB 20 NxB+ QxN 21 RxB RxB.

20 R-B7 Q-B1 22 Q-B3: B-N5!
21 RxB NxB

Black offers White a piece to stop
mate.

23 Q-B7+ 1-0

WILKES-BARRE

NOTES by A. Dunne.

CENTER COUNTER DEFENSE

(W) Alex Dunne (2251)

(B) Will Everett (1437)

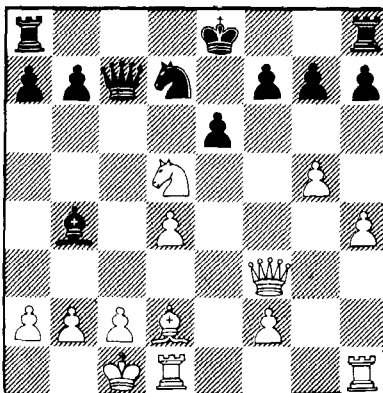
1 P-K4 P-Q4 8 B-QB4 P-K3
2 PxB QxP 9 B-Q2 QN-Q2
3 N-QB3 Q-QR4 10 0-0-0 Q-B2
4 P-Q4 N-KB3 11 P-KN4 B-K2
5 N-B3 B-N5 12 P-N5 N-Q4
6 P-KR3 BxB 13 P-KR4 B-N5?
7 QxB P-B3 14 BxB! ...

Punishment is overdue Black should
castle K-side and hold his breath.

14 ... BxB

If 14...BxB 15 QxB KxB 16 KR-K1+.

15 NxB! ...



15 ... BxB+ 17 R-K1+ K-B1
16 RxB PxB

It is unlikely that Black will survive
after K-Q1 18 QxQP.

18 R/2-K2 Q-Q1 20 Q-B5+ K-N1
19 QxQP N-N3 21 R-K7 P-N3

Naturally, 21 ...N-Q4 is met by 22
QxN.

22 P-R5: PxB

Forced, on 22...N-Q4 23 QxN QxQ 24
R-KB+ RxB 25 RxB+ K-N2 26 P-R6#.

23 Q-B5 Q-KB1 25 P-N6! RxB
24 R/1-K6:N-B5

If 25...N-Q3!? 26 PxBP+ NxB 27 QxP
R-Q1 28 Q-N4+ Q-N2 29 R-KB+ RxB 30
RxBmate.

26 RxB+ 1-0

WILKES-BARRE FRENCH DEFENSE

MacCutcheon Variation

(B) Bedrich Martinek (1685)

(W) Jess Goodman (2054)

1 P-K4 P-K3 2 P-Q4 P-Q4

3 N-QB3 N-KB3 12 PxB QxP
4 B-KN5 B-N5 13 P-QR3 BxB
5 P-K5 P-KR3 14 PxB B-R3!
6 PxB! PxB 15 Q-Q4 Q-N4
7 PxB R-N1 16 Q-K5 Q-B5?
8 Q-Q2 P-B4 17 K-Q2 P-QB4!
9 N-B3 N-B3 18 NxB! P-Q5
10 B-N5 Q-N3 19 N-K4!! PxB+
11 BxB+ PxB 20 K-B1! 1-0

Notes by A. Dunne.

QUEEN PAWN GAME

WILKES-BARRE

(W) Ken Williams (1774)

(B) Alex Dunne (2251)

1 P-Q4 P-Q4 8 R-QB1 QN-Q2
2 P-QB4 P-QB3 9 P-K3 Q-R4
3 PxB PxB 10 Q-N3 0-0
4 N-QB3 N-KB3 11 B-Q3 P-R3
5 N-B3 P-K3 12 0-0 P-QN4
6 B-N5 P-KR3 13 P-QR3 B-Q3
7 B-R4 B-N5 14 Q-B2 B-N2
15 P-QN4?! ...

Planning to trap Black's Queen, but

15 ... QxRP! 17 KR-N1 KR-B1!
16 R-R1 QxP

The Queen will cost White dearly.

18 RxB BxB 20 R-N1 P-N5
19 Q-K2 BxB 21 P-R3 P-QR4

The pygmies will soon elect a new Q.

22 P-N4 ...

White's attack is in desperation.
There is little he can do to defend.

22 ... P-R5 27 BxB RxB
23 P-N5 PxB 28 BxB BxB
24 BxB P-R6 29 RxB N-B6
25 Q-R2 N-K5 30 Q-R1 N-K7+
26 B-K7 B-R3 31 K-N2 P-R7
32 1-0

Notes by A. Dunne.

THE LPO

ENGLISH OPENING

(W) James Hughey (1419)

(B) Tom Thorpe (1549)

1 P-QB4 N-KB3 12 R-Q1 B-K3
2 N-QB3 P-KN3 13 B-B4 Q-R4
3 P-Q4 P-Q4 14 NxB+ BxB
4 P-K3 N-B3 15 BxB NxB
5 P-KR3 P-K4 16 RxB Q-KB+
6 PxB NxB 17 K-R2 QR-QB1
7 PxB P-B3? 18 B-K2!! QxR??
8 N-B3 NxB 19 B-N4+ K-K3
9 QxN PxB 20 Q-K4+ B-K4
10 B-N5+ K-K2 21 QxB Mate
11 0-0 B-N2

AMERICAN OPEN 1973

CLOSED SICILIAN

(W) Robert M. Snyder

(B) Larry Christiansen

1 P-K4 P-QB4 2 N-QB3 P-KN3

An accelerated fianchetto in the Cl
osed Sicilian!? Chances are good
that it will transpose or be similar
to the main lines anyway. In the
Closed Sicilian White strives for
King side play (with both his pieces
and commonly with a pawn storm),
while Black will obtain counterplay
on the Q-side with a rapid advance
of his Q-side pawns.

3 P-KN3 N-QB3 5 P-Q3 R-QN1
4 B-N2 B-N2

Also possible is 5...P-Q3 which would
transpose into the main line. A
few possible continuations are, 6
P-KB4 (better than 6 KN-K2 or 6 BK3
in my opinion) and now:

A. 6...N-KB3 7 N-KB3 0-0 8 0-0
R-QN 9 P-KR3 P-QN4 10 P-R3!
P-QR4 11 B-K3 P-N5 12 PxB PxB

13 N-K2 B-N2 14 P-N3!! R-R
15 R-B R-R7 16 P-N4 Q-R (16
...P-K3 17 N-N3 R-K 18 P-B5)
17 Q-K Q-R3 18 Q-B2 N-R2 19
P-B5 Spassky-Geller 1968 and
White is on top.
B. 6...P-K3 7 N-KB3 KN-K2 8 0-0
0-0 9 N-K2 (or 9 P-KN4 P-KB4
10 P-KR3 is playable), R-N 10
P-B3 P-KB4 11 B-K3 P-QN4 12
B-B2 P-N5 13 KxB KxB 14
P-Q4 NxB 15 NxB P-R7 16 R-K
Q-R4 17 PxB PxB 18 Q-Q6.
C. 6...P-K4 7 N-KR3 (7 N-KB3 is
ok) KN-K2 8 0-0. Also 6...
P-KB4, 6...N-KR3, 6...N-Q5,
6...R-QN and 6...P-N3 have
been tried here.

6 P-KB4 ...

Good here is 6 B-K3 P-Q3 7 Q-Q2
P-QN4 8 N-Q P-N5 9 P-KB4 P-K3
(9...B-Q2 10 N-KB3 N-KB3 11 P-KR3
0-0 12 0-0) 10 N-KB3 KN-K2 11 0-0

6 ... P-QN4 7 P-QR3 ...
7 N-KB3 was to be considered. The
text delays Black's P-QN5 and opens
White's QR.

7 ... P-QR4

To play a future P-QN5 without al-
lowing White to obtain play on the
QR when the file is opened.

8 N-KB3 P-N5 10 N-K2 Q-N3
9 PxB RxB 11 R-QN1 ...

To allow a future P-QN3.

11 ... N-Q5 12 B-K3? ...

12 P-QN3 should have been played.

12 ... B-R3?

12 ...P-N6! would have been very
strong.

13 P-QN3 ...

He missed his chance, now P-N6 is
prevented forever!

13 ... N-KR3

To keep the KB open and allow for
a future P-KB4. 13...P-K3 followed
by N-K2 was to be considered.

14 P-R3 ...

Preventing 14...N-N5.

14 ... NxB/7 15 QxN B-B6+

Black's last two moves only made
White's game more comfortable.

16 N-Q2 P-KB4

The thematic move which is common
in such a position. The text helps
restrain White's Kingside pawns.

17 0-0 0-0 18 P-KN4 ...

Increasing K-side pressure.

18 ... P-K3 20 P-K5! ...
19 N-QB4 Q-B2

Opening the KB and securing Q6.

20 ... N-B2 21 PxB KxB

21...NxB was better.

22 Q-B2 QR-B 23 B-Q5! ...

Tying down Black's Knight, threat-
ing N-Q6.

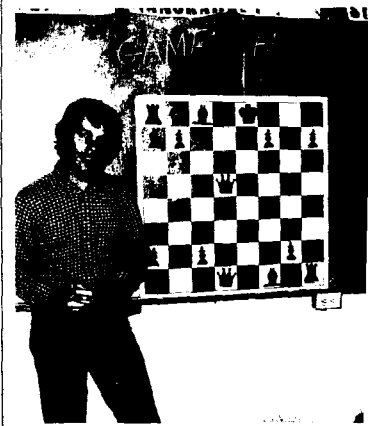
23 ... BxB 25 QR-Q ...
24 QxB K-N2

Here I incorrectly offered a draw
which my opponent gladly accepted
If 25...P-KN4 26 P-K6: or 25 ...N
26 Q-R4!

Notes by Robert M Snyder. Robert
currently representing the U.S. o
the Olympiad IX Correspondence Ch
ess Team Championships.

SNYDER'S CHESS SERVICES

Greatly improve your chess wit
private lessons, having your game
or positions analyzed or having a
Simultaneous Exhibition or lectur
at your local club. Positions Ana
lyzed - \$3.00 per position. Game
Analysis, Brief (for short games
only) \$4.50 per game, Detailed \$9
per game. Enclose a self addresse
and stamped envelope or extra \$.5
Also write for a free brochure on
"CYBERCHESS" a chess playing mach
ine (not a computer, but better!)
which has a cost of only \$34.95.
You will love it as both a teacher
and substitute playing partner.
Robert M. Snyder, 14282 Jessica S
Garden Grove, Ca. 92643. Phone 71
531-3643. Also Snyder Sicilian on
\$2.00.



Robert M. Snyder

1979 SCCA BUSINESS MEETING

The 1979 Business Meeting of t
SCCA will be held on Saturday Nov
ember 10th in conjunction with the
South Carolina Closed Championshi
To be discussed are:

A.) A prospective SC Open Cham
pionship in 1980 (in addition
to the closed.)

B.) Junior Chess

Ballots will be distributed fo
election of 1980 officers, and a
proposals approved. Mail ballots
will be acceptable as before.

LATE NEWS

According to usually reliable
sources the National Open will b
revived next year in New Orleans
Atlanta players have been doing
well in New Orleans lately and t
could be an excellent opportunit
to visit the historic city.

In the East, state chess assoc
iation memberships have been goi
straight up, New Jersey has take
the lead with 1500! members, BUT
tournaments have been hurting.

The Arkansas Open by Craig Kozel and Donny Gray

The Arkansas Open held during July 21-22 was well attended 48 players from six states competed for the prizes, with Donny Gray and Duane White winning first prizes in their sections. Here are some interesting games from the Arkansas Open.

FRENCH DEFENSE

(W) Majeed Nahas (1683)
(B) Chuck Niggel (1525)

Notes by Black.

1 P-K4 P-K3 7 O-O P-QB3
2 P-Q4 P-Q4 8 R-K1+ N-K2
3 PXP PXP 9 QN-Q2 Q-B2
4 N-KB3 B-KB4 10 N-K5 ? P-B3
5 B-Q3 BxB 11 N-N4 P-KR4
6 QxB B-Q3 12 Q-R3 ...

I was expecting 12 NxP+ K-Q1 13 N-B3 or NxQP and White's attack may be hard to beat off.

12 ... N-Q2 15 P-KN3 P-N5
13 P-QB4 O-O-O 16 Q-N2 N-KN3
14 N-K3 P-KN4 17 PXP P-R5

If 17 ...PxP 18 NxQP and Black is busted.

18 PxBP PxBP 20 BPXP RXP
19 N-N3 PXP

White has no good square for his Queen so he must accept the sacrifice. Ex.
21 Q-K4 BXP 22 QxN B-B7+.

21 QxR BXP
22 Q-K2 N-B5
23 Q-R6+ K-N
24 N-R5 N-R6+
25 K-N2 BXR
26 NxP+ K-R1
27 N-B5 R-K1!

Threatens 28...R-K7+ 29 QxR N-B5+ or 28...R-K7+ 29 K-B1 R-B7+ 30 K-K RxN.

28 B-K3 RxB!
If NXR Q-N6+ and mate next 29 N-Q6! R-N6+

This move begins a forced march of the King to within reach of the Black Q.

30 K-B R-N8+
31 K-K2 N-B5+
32 K-K3 R-N6+
33 KxN QxN+

34 K-B5 R-B6+ 38 K-R7 R-R6+
35 K-N6 P-B4+ 39 K-N6 R-R3+
36 K-B7 Q-B3+ 40 K-N5 B-Q7#
37 K-N8 Q-B1+

A good example of the King hunt in chess:

ENGLISH OPENING

(W) Chris Balleza (Unr)
(B) Mart Shearer (1216)

1 P-QB4 P-QB4 8 Q-Q2 B-N2
2 N-QB3 P-K4 9 N-K4 O-O
3 N-B3 N-QB3 10 N-B6+ BxN
4 P-Q3 P-Q3 11 BxB N-Q1
5 P-KN3 KN-K2 12 Q-R6 N-K3
6 B-N2 P-KN3 13 N-N5!! N-B4
7 B-N5 Q-Q2 ? 14 QxRP Checkmate

STONEWALL SYSTEM

(W) Bob Nunnally (1458)
(B) Dan Breitenburg (1530)

1 P-QB3 P-Q4 3 P-K3 B-B4
2 P-Q4 P-QB4 4 P-KB4 P-K3

5 N-B3 N-QB3 6 B-N5 R-B1

Neglecting K-side development. N-B3 would prevent Black's later difficulties.

7 O-O B-Q3 9 BxN RxB
8 QN-Q2 P-QR3 10 N-K5 ...

A strong post for the Knight. If 10...BxN 11 BPxB provides for a mass of White pawns in the center and a potentially strong K-side attack.

10 ... R-B1 15 P-B5! PXP
11 Q-R4+ K-K2 16 NxP+ BxN
12 Q-Q1 P-KB3 17 RxB K-B2
13 N/5-B3 PXP 18 R-B1 ...
14 NxP B-N3

Not 18 RxQP BXP+.

18 ... N-K2 22 PXP NXP
19 P-K4 Q-B2 23 N-K4 Q-N3+
20 Q-R5+ P-KN3 24 K-R1 R-B5 ?
21 Q-R4 B-K4

Black pins the Knight against the Queen, usually a strong move, but

18 P-B4 B-B3 21 Q-B3 P-KB3
19 N-N3 BXP 22 K-R1 P-B4 ?
20 N-B5 B-N3

There is no time for this 22 ... R-B2 immediately would allow the Black Knight to retreat after R-N

23 R-N1 K-R2 24 Q-KN3 R-B2

24 ...Q-K1 25 NxP and the Knight goes anyway.

25 QxN+ K-N 26 NxP!+ Resign

PIRC DEFENSE

(W) Conrado Mapili (UNK)
(B) Wayman Coulter (1547)

1 P-K4 P-Q3 4 B-KN5 B-N2
2 P-Q4 N-KB3 5 Q-Q2 O-O
3 N-QB3 P-KN3

5...P-KR3 is an alternative if 6 B-R4 P-KN4 7 B-N3 N-R4 = or 6 B-K3 N-N5 7 B-KB4 P-K4.

6 B-QB4 NxP 7 NxN ? ...

The move here is 7 BXP+ to be fol-

11 BxQN PxB 17 NxB QxN
12 P-Q4 Q-Q3 18 R-KB1 Q-Q4
13 P-KN3 B-N5 19 P-N3 N-K5
14 Q-B2 Q-Q4 20 B-N2 N-Q7
15 P-KR3 P-K6! 21 P-B4 NXR
16 Q-R2 B-B6
Better is 21...Q-QR4!

22 KxN Q-B6+ 23 K-N1 Q-B7+ ?

Instead KR-K1!

24 QxQ PxB 32 K-B3 R-Q8
25 KxP KR-K1 33 K-N2 R-QB1
26 R-Q1 R-K2 34 P-QN4 P-B3
27 P-Q5 PXP 35 B-B3 R-B3
28 RXP R/1-K1 36 K-B2 P-QR4
29 R-Q2 P-KR3 37 P-R3 PXP
30 R-B2 R-K8 38 PXP and wins
31 P-B5 R-KR8

FRENCH DEFENSE

(W) Michael West (1418)
(B) Charles Davis (1554)

1 P-K4 P-K3 6 P-KR4 BxB
2 P-Q4 P-Q4 7 PxB QXP
3 N-QB3 N-KB3 8 N-R3 Q-K2
4 B-KN5 B-K2 9 N-B4 N-B1
5 P-K5 N/3-Q2 10 B-Q3 N-B3
11 Q-N4 P-KN3
12 R-Q1 B-Q2
13 P-R3 O-O-O
14 N-R4 P-B4
15 PXPep QxBP
16 N-B5 NXP
17 O-O N-B4
18 KR-K1 P-B3
19 Q-K2 N-N2
20 P-KN3 K-N1
21 P-QN4 P-KN4
22 N-N2 Q-K2
23 Q-K5+ K-B1
24 N-R6+ Resigns

CARO-KANN

(W) Donny Gray (1996)
(B) Clayton Veach (1602)

1 P-K4 P-QB3 2 P-Q4 P-Q4 3 N-Q2 PXP 4 NxP B-B4 5 N-N3 B-N3 6 P-KR4 P-KR4 ? (P-KR3 is book and for good reason. The text weakens Black's KN4 too much.) 7 N-B3 N-Q2 8 B-Q3 BxB 9 QxB N/1-B3 10 B-N5 (I was watching Donny play this game with great interest, I was curious as to how he would handle this position, I believe 10 B-Q2 with a later N-KN5 is even stronger - JEM)

10 ... P-K3 27 K-Q2 N-B4
11 O-O-O B-K2 28 R-KB3 R-K2
12 KR-K1 Q-R4 29 P-B3 R-R2
13 Q-N3 O-O-O 30 R-Q3 N-Q3
14 N-K5 NxN 31 K-K3 N-B4+
15 RxxN R-Q4 32 K-K4 R-K2
16 RxxR NXR 33 K-B4 P-B3 ?
17 BxB NxB 34 NxP+! RxN
18 N-K4 Q-B2 35 KxN R-K7
19 P-N3 N-B4 36 P-KB4 R-K2
20 Q-R3 P-QN3 37 P-K6 K-Q2
21 Q-R6+ Q-N2 38 KXP K-K1
22 QxQ+ KxQ 39 P-Q5 PXP
23 N-N5 N-Q3 40 RXP R-N2
24 P-N3 P-N4 41 K-N6 K-K2
25 R-Q3 R-K1 42 R-R5 Resigns
26 R-K3 K-B2

BIRD'S OPENING

(W) Bob Nunnally (1458)
(B) Clayton Veach (1602)

1 P-KB4 P-Q4 2 N-KB3 N-K3 3 P-K3 B-N5 4 B-K2 P-K3 5 P-QN3 B-Q3 6 B-N2 QN-Q2 7 O-O O-O 8 N-K5 BxB 9 QxB Q-K2 10 P-Q3 QR-Q 11 QN-Q2 P-QB3 12 NxN RXN (Better is 12...NxN) 13 N-B3



Wayman R Coulter W.P. Jackson
the pin is not absolute!

25 N-N5+ K-N2 28 BxB NxB
26 QxR R-Q1 29 QxN Resign
27 N-B3 B-B5

RUY LOPEZ

(W) Andy Secuban (UNK)
(B) Bob Hartman (1159)

1 P-K4 P-K4 5 R-K1 KN-K2
2 N-KB3 N-QB3 6 N-B3 P-QR3
3 B-N5 P-Q3 7 B-R4 N-N3
4 O-O B-Q2

7...P-KN3 to fianchetto the KB and to prevent a White Knight from posting itself at KB5 would fit in more with the Steinitz Variation.

8 P-Q3 P-R3 13 PXP B-N5
9 N-K2 B-K2 14 Q-Q3 N-QN5
10 P-B3 O-O 15 Q-N3 NxB
11 B-B2 B-B3 16 QxN BxN
12 P-Q4 PXP 17 PxB B-N4

Charles Davis Clyde Scott
lowed by NxN.

7 ... P-Q4 9 O-O-O B-B4
8 B-N3 PxN

9...N-B3 followed by P-N3 and N-R4 to eliminate White's KB might prove too time consuming.

10 N-K2 ...

10 Q-N4 is good too.

10 ... P-QB3 13 QxQ BxQ
11 N-N3 B-N5 14 RXP BXP
12 QR-K1 QXP ? 15 RxB and wins

FALKBEER'S COUNTER GAMBIT

(W) Dan Breitenburg (1530)
(B) Mike Cornett (1267)

1 P-K4 P-K4 6 PXP NXP
2 P-KB4 P-Q4 7 Q-K2 B-KB4
3 KXPXP P-K5 8 P-Q3 B-QN5
4 N-QB3 N-KB3 9 B-Q2 BxN
5 B-N5+ P-B3 10 BxB O-O

13 ... R/2-Q1 18 QR-KB P-K4
14 N-K5 N-Q2 19 PXP BXP
15 N-N R-N 20 BxB PxB
16 Q-N4 P-B3 21 RNR+ RNR
17 R-B3 R/2-Q1 22 RNR+ QXR

DRAW

RUY LOPEZ

EXCHANGE VARIATION

(W) Donny Gray (1996)

(B) Larry Vejrosta (1774)

Notes by White.

1 P-K4 P-K4 7 QN-Q2 O-O-O
2 N-KB3 N-QB3 8 P-KR3 B-R4
3 B-N5 P-QR3 9 P-R3 P-KN4?
4 B-N QPB 10 P-KN4? B-N3
5 O-O B-N5 11 N-B4 P-R3?
6 P-Q3 Q-B3

Much better for Black would be BxKP followed by 12 N(4)xP with an unclear position.

12 B-Q2 B-Q3 19 Q-B3 R-B2
13 B-B3 Q-N2 20 Q-N3 N-B3
14 N/4xP P-B3 21 P-KB4 N-K1
15 NxB Q-N 22 PXP PXP
16 P-K5 PXP 23 RNR QXR
17 NXP B-N 24 R-KB1 Q-Q4
18 BxB R-R2 25 R-B5 Q-R7

26 Q-B2 Q-N1
27 R-B8 Q-R2
28 Q-B5+ QXQ
29 R-XQ N-Q3
30 B-N PxB
31 RXP R-K1
32 K-B2 P-N4
33 P-KR4 P-R4
34 P-R5 K-Q2
35 P-R6 K-K2
36 R-N7+ K-B1
37 P-N5 R-K4
38 P-N6 R-R4
39 R-B7+ K-N1
40 P-R7+ K-R1
41 R-B8+ K-N2
42 R-N8+ Resigns

SICILIAN DEFENSE

DRAGON VARIATION

(W) Eric Bilsky (1449)

(B) Gary Weeks (1674)

1 P-K4 P-QB4
2 N-KB3 P-Q3
3 P-Q4 PXP
4 NXP N-KB3
5 N-QB3 P-KN3
6 B-KN5 B-N2
7 Q-Q2 N-B3
8 P-B3 O-O
9 B-K2 B-Q2
10 O-O-O N-N
11 Q-N Q-R4

12 Q-K3 KR-B1 18 B-R6 Q-QR4

13 K-N1 R-N 19 Q-N7 B-K3

14 QXR QXB 20 Q-N5 QXP+

15 Q-B7 P-N4 21 K-B1 B-R3+

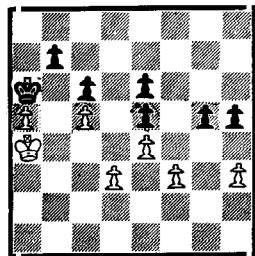
16 Q-N7 R-QB1 22 R-Q2 Q-R8#

17 QXP P-N5

(W) Standridge (1120)

(B) Johnson (1420)

In the game pictured above this position was reached after 54 moves. A draw was agreed on, but there is a win for White.



55 P-R4 PXP
Forced.

Now Black doesn't have any pawn moves.

56 K-N4 K-R2 58 P-Q4! ...
57 K-B4 K-R3

If 58...PXP 59 KxP with an easy win to follow.

58 ... KxP 61 KxP K-N4
59 P-Q5! KPXP+ 62 KxP KxP
60 PXP PXP+

Notice how White will Queen with check. If it wasn't for this it would be a draw.

63 P-B4 P-N4 66 P-B7 P-N7
64 P-B5 P-N5 67 P-B8(Q)+ K-any
65 P-B6 P-N6 68 Q-B1

Followed by 69 Q-QN1 and wins.

QUEEN PAWN GAME
GREATER NEW YORK OPEN

July 21-22

(W) Walter Shipman (2374)

(B) Ruben Shocron (2282)

Notes by Shipman

Black is in zugzwang.

39 ... K-Q3 41 K-K5 B-B3
40 K-B6 K-B4 42 B-B7 1-0

WORLD OPEN

July 2, 79

PIRC DEFENSE

AUSTRIAN ATTACK

(W) D. Sciarreta (1693) Notes by
(B) L. Sukiennik (1661) Black

1 P-K4 P-Q3 15 N-N1: R-N1:
2 P-Q4 N-KB3 16 Q-KR3 R-N
3 N-QB3 P-KN3 17 PXR B-Q2
4 P-KB4 B-N2 18 B-KN4 Q-QB
5 N-B3 O-O 19 P-B3? B-N2
6 B-K2 QN-Q2 20 R-B3! P-K4!
7 O-O P-QB4 21 BxB QXB
8 P-K5 N-K1 22 Q-KR4 R-KB1!
9 P-K6? PXP 23 RNR+ BNR
10 N-KN5 BXP+! 24 B-Q2 Q-B4!
11 K-R1 N-N3 25 R-QB? N-B5
12 N-K4 P-Q4 26 Q-K1 NXP
13 N-N3 N-N2 27 R-QN? N-Q6!
14 Q-Q3 N-KB4? 28 Resigns

THE LPO

(W) John Welch (UNR)

(B) Philip Busby (1331)

5 B-Q2 P-B4 14 N-Q6 NXP
6 N-B3 N-B3 15 P-N P-N
7 B-Q3 B-Q2 16 Q-R5 QR-QB1
8 O-O O-O 17 N-K5 QXP
9 N-QN5 K-R1 18 NXP QXP
10 N-Q6 Q-B2 19 QR-Q1 B-B3
11 N-QN5 Q-N3 20 B-K2 Q-K5!
12 P-QR3 BxB 21 P-KB3?
13 QXB P-QR3

Better is 21 N-K3

21 ... QXB 22 Q-Q2 Q-N 0-1

THE LPO
NIMZO-LARSEN

(W) Watson (1500)

(B) Adams (1673)

1 P-QN3 P-QB4 8 KN-K2 P-KN3
2 B-N2 P-Q3 9 P-B4 PXP
3 P-K3 P-K4 10 NXP B-KN2
4 N-QB3 N-QB3 11 O-O O-O
5 B-N5 P-QR3 12 P-K4 N-N5
6 B-N+ PxB 13 Q-K2 P-B4
7 P-Q3 N-B3 14 N-R4 ...

An inherent problem in the Nimzo-Larsen is that White's QB stands unprotected on QN2 in this case causing White's QN to be displaced

14 ... PXP
15 PXP BxB
16 NxB N-K4
17 P-B4 B-N5
18 Q-Q2 Q-K2
19 PKR3 B-Q2
20 N-R4 R-B3
21 N-N6 QR-KB1
22 N-K2 BXP!
23 PxB N-B6+
24 R-N RNR
25 N-Q5 P-N
26 QXP+ K-N2
27 R-Q1 Q-R5 0-1

DANISH GAMBIT ACCEPTED

1945

Game and notes submitted by John Hurt.

(W) Denker (B) Gonzales

1 PK4 PK4 10 NB3 BK2
2 PQ4 PXP 11 NQ5 O-O
3 PQB3 PXP 12 NB6+! KR1
4 QB4 PXP 13 NR3 B-N7
5 BxNP BN5+ 14 PxB PKN3
6 KB1 NKB3 15 QB4! NB4
7 PK5 NN1 16 NN5 NQ3
8 QN4 BB1 17 NXP+! N-N
9 QB3 NKR3 18 QR6!! 0-1

THE LPO

TWO KNIGHTS DEFENSE

(W) Newton Prince (1269)

(B) Floyd (1188)

1 P-K4 P-K4 7 B-Q2 N-N
2 N-KB3 N-QB3 8 P-N B-Q3
3 B-B4 N-B3 9 N-N5 O-O
4 N-B3 B-N5 10 Q-R5 P-KR3
5 P-Q3 P-Q4 11 NXP Q-B3
6 PXP NXP 12 NXP+ Resigns

THE LPO

SLAV DEFENSE

(W) Richard Carpenter (1683)

(B) Mason White (1531)

1 P-Q4 P-Q4 2 P-QB4 N-KB3 3 N-QB3
P-K3 4 B-N5 P-B3 5 P-K3 QN-Q2 6
P-QR3 P-KR3 7 B-B4 P-R3 8 N-B3 N-R4
9 B-N3 NxB 10 RPN N-N3 11 P-B5 NQ2
12 P-QN4 Q-B3 13 N-QR4 P-K4 14 R-B1
B-K2 15 N-R2 P-KR4 16 N-N4! Q-N4 17
P-B4 Q-N3 18 K-B2 P-B3 19 B-K2 Q-B2
20 K-N1 R-N1 21 N-R6! P-N 22 BXP
R-N3 23 P-B5 N-B1 24 PXP Q-N2 25
N-N6 R-N 26 NxB R-N 27 Q-N4 R-B2 28
Q-B5 P-K5 29 K-B2 N-Q2 30 Q-B4 K-Q
31 B-N4 B-B 32 B-B5 Q-R 33 P-R4 BN2
34 P-N5 N-N 35 P-N6 R-Q2 36 Q-N+
K-K2 37 QXQ BxQ 38 BXR KxB 39 RXP
1-0

THE LPO

NIMZO-INDIAN

(W) Herbert Horton (UNR)

(B) Jeffrey Cook (UNR)

1 P-Q4 P-Q4 3 N-QB3 N-KB3
2 P-QB4 P-K3 4 P-K3 B-N5

Brent J Standridge

1 P-Q4 P-Q4 8 P-KR3 O-O
2 N-KB3 N-KB3 9 B-Q3 P-QN3
3 P-B4 P-QB3 10 R-QB1 B-N2
4 PXP PXP 11 O-O R-B1
5 N-B3 N-B3 12 B-N1 R-K1
6 B-B4 P-K3 13 B-N5 P-QR3
7 P-K3 B-K2 14 P-R3 P-N4
15 Q-Q3 ...

The threat to Black's KR2 is easily parried, but the ensuing exchanges lead to a weakening of the Black pawn structure.

15 ... N-K5 21 Q-Q2 R-K2
16 BxB NxB 22 R-B1 R-B2
17 N-K5 N-N3 23 RNR QXR
18 N-N(N) RPN 24 Q-B3 QXQ
19 N-N P-N 25 PXP K-B?
20 RNR QXR

25 ... P-N4!

26 P-KR4! K-K2 33 BXP BXP
27 P- P-B3 34 PXP KXP
28 P-N5 B-Q4 35 K-N4 P-R4
29 K-N2 K-Q3 36 K-N5 B-B2
30 K-N3 P-K4 37 B-B2 P-R5
31 PxBP+ NXP 38 B-N1 B-K1
32 P-B3 P-B4 39 B-R2 ...

Earl C Johnson

1 P-Q4 P-KB3 2 N-KB3? ...
Better is 2 P-K4.

2 ... P-Q4 11 B-Q2 P-R3
3 P-K3 N-B3 12 N-B3 N-B3
4 B-Q2 P-K4 13 P-QR3 N-KN5
5 B-B3 B-KN5 14 P-N3 P-R5
6 B-K2 B-Q3 15 R-K1 PXP
7 O-O P-K5 16 BXP RXP
8 KN-Q2 BxB 17 QXR NXP
9 QXB P-KR4! 18 K-N Q-N4?
10 N-N3 P-B4

18 ...Q-R5+ 19 K-N QXP+ 20 K-B Q-B6+
21 K-N B-R7+ 22 KxB O-O-O 23 K-N
R-R1 24 Any R-R8# is faster.

19 KR-N1 O-O-O 23 K-B2 Q-R5+
20 R-N2 R-R1+ 24 N-N3 P-KN4
21 K-N1 B-NP 25 R-R1 B-N+
22 N-K2 B-R7+ 26 K-N QXRmate

WHERE TO PLAY CHESS

ARKANSAS

Little Rock: Little Rock CC, Arkansas Enterprises for the blind, 28th & Fair Park Blvd., Fri. 6-11 PM.

FLORIDA

Coral Gables: Coral Gables Memorial Youth Center, Mon. 7 PM. call Paul Daich 279-8720.
Jacksonville: Community Hall at the Phillips Mall Shopping Center, 3563 Phillips Hwy. Wed. at 7:30 PM.

Melbourne: Melbourne CC, Old Civic Center, Front St. call Fred Arnold 724-2704. Mon. Noon-6 PM Wed. at 7:30 PM.

Miami: Miami CC, Miami Legion Park Hall, 64th St. & Biscayne Blvd. Sat. & Sun. 1-5 PM call Charles Turk 226-8235.

Orlando: Orlando Rec. Bldg. Paramore & Livingston, Wed. & Fri. 7:30 PM. & Sunday 1:30 PM call Larry Storch 273-4982.

Pompano Beach: Pompano Beach Rec. Center, 1801 N.E. 6 St. Fri 7:30 PM.

St. Petersburg: St. Pete CC, 540 4th Ave. N., call Gil Cantrell 527-6010.

Tallahassee: Tallahassee CC, FSU Univ. Union, Woodward Ave. & Tenn. St., Rm 346, 7 PM Tue.

GEORGIA

Adel: Cook County CC, Cook High School, Thu. 3:05 PM.

Albany CC, NW Branch Library (Day & Time ?)

Athens: Athens CC, Dudley Park, Thu. 8 PM.

Univ. of Ga. CC, Chem. Bldg. Rm.1505 Wed. 7:30 PM.

Atlanta: Northeast CC, St. Michaels Church, 3323 Chestnut Dr. Thu. 7 PM.

Augusta: (See SC, N. Augusta)

Dalton: Contact W. Strain, 1508 Dug Cap Rd.

Gainesville: Lanierland CC, Breneau College, Yonah Hall, 7:30 PM Tue.

Columbus: Columbus College, Davidson Center, Wed. 7 PM.

Macon: Macon CC, Robert Train Bldg., Oglethorpe Blvd. Wed. 7 PM.

Rome: Rome CC, Rome Rec. Center, 300 W. 3rd St. Fri.

Savannah: Armstrong College CC, Gamble Hall, Fri 12:30 PM.

Savannah CC, Duffin Park Activities Bldg. Mon 7

Statesboro: Statesboro & Ga. Southern Ctr. Mon and Fri 7 PM.

St. Simon's: Island CC, Island Club, 800 King's Way, Mon. 8 PM.

Thomaston CC: Civic Center, Tue. 7:30 PM.

Valdosta: Tall Tree Apts. Rec. Ctr. 200 Connel Rd. Tue. 7:30 PM.

NORTH CAROLINA

Asheville: N. Asheville Community Center Wed 7.

Chapel Hill: UNC-Ch CC, Carolina Union, Thu 7:30

Charlotte: Metrolina CC, Central Community College, Wed. 7:30 PM.

Fuquay-Varina: Fuquay-Varina Sr. High School, 201 Broad St. Thu. 2:30-4:00 PM.

High Point: Oakview Rec. Ctr., James Rd. Thu 7.

Mars Hill: Mars Hill College, Memorial Library, Thu. 7:30 PM.

Raleigh: Tucker House, 418 N. Person St. Fri. 7:30-11:30 PM.

Rockingham: Sandhills CC, Parks & Rec. Bldg. Wed. 7:00 PM.

Statesville: Northwest Bank, Front & Ctr. St. Fri. 7:30 PM.

PENNSYLVANIA

Allentown: 1100 S. 24th St. Fri. evenings.

Poison: Embassy CC, Pete's Embassy Restaurant, Kedron Rd. (Pa Rte 420) and McDade Blvd. Tue 7.

Hatboro: Chaturanga CC, Thu. evenings, Loller Bldg. South York Rd.

Morrisville: Penn-Jersey CC, Jaycees Bldg., Hillcrest Ave. Mon. evenings.

Pittsburgh: Golden Triangle YMCA, 304 Wood St. Thu. evenings & Sat afternoon & evenings.

Wilkes-Barre: Hotel Stirling, Wed. 6:30 PM.

SOUTH CAROLINA

Charleston: Post Courier Bldg. 6296 Rivers Ave. Wed. 7 PM.

Columbia: Palmetto CC, Wade Martin Bldg. of Midlands-Tec, Beltline Campus Cafeteria 7-10:30 PM. Thu.

Univ. of SC CC, Moore Dorm Conference Rm. Mon. at 8:00 PM.

Greenville: Bobby Pierce Community Ctr., Townes St. Wed. 7 PM.

Lancaster: Star Hall, Univ. of SC at Lancaster, Thu. at 7:00 PM.

North Augusta: N. Augusta Rec. Ctr., Wed. 7 PM.

Rock Hill: Fewell Park Rec. Ctr. between Alexander & Thornwell, Tue. 7:30 PM. call 328-3433.

Spartanburg: Sugar & Spice Cafe, North Pine St. Tue. 7:30 PM.

Bring your own sets and clocks to the Chess Clubs. Many school clubs do not meet in summer.



"OKAY. I'LL PLAY YOU WITH ONE HAND TIED BEHIND MY BACK!"

Cover Story

PEOPLE

Four times the West Virginia State Champion, a former Mississippi State Champion, and the 1973 Tennessee State Champion, John Hurt has played tournament chess for 50 years. He has won 85 first place trophies. John is currently editor of the *Mid-South Chess Advocate*, and has served as President of the West Virginia Chess Association as well as the Tennessee Chess Association. John is a retired salesman who has been a mainstay of organized chess in Memphis. He has written a book (See Books) on various center gambits, and in the Euwe-Gligoric line of the French Defense "Whatever John plays, is the line!"

James Little and John engineered what would have to be called the "Memphis Plan". The Memphis plan was to carve out an area with a one to three hundred mile radius around Memphis and promote chess on a regional basis. Memphis, being the largest city and at the geographic apex would become the chess capitol for the region. So when the USCF decided to expand the number of regions, Region 8 was born (Al., Ar., La., Ms., Tn.,) Memphis, of course, the obvious Regional Capitol. The plan worked, and probably still is a good plan for Memphis (James Little has since moved to Washington State.). The plan would have been much better suited to Chicago or Atlanta. The Mississippi River is a freight transportation facility, whereas, O'Hare and Hartsfield Airports are people facilities. The Mississippi River acts as a deterrent to people movement rather than an aid. The second problem was that the Memphis Chess Club was to small a base to capitalize such an ambitious project, and lastly, USCF regionalizing, even if ideal, did very little to help.

The plan was brilliant in that it recognized that even though Memphis is the largest city in Tennessee, due to its location on the tip of the state, hundreds of miles from the population centers in middle and eastern Tennessee, any state plan for Memphis would be of limited use.

The second class postage system *The Chessman* is currently using requires: 1. All mail have zip codes, which are correct! In the event that mail goes out with an erroneous zip code the post office gets out a pair of scissors and cuts out the mailing label, attaches form 3579, circles the zip code and says "you lose" and bills *The Chessman* two bits. The magazine goes in the waste basket. 2. All mail must go at one time, which does not mean all will be delivered at the same time. The effect of this is that *The Chessman* simply cannot mail to people with bad zip codes or research people with no zip codes, to do so would unfairly delay the mailing of all magazines. So, if you have not been receiving your magazine, and you are not reading this, then you should check with your state membership officer (see officers page) make sure that you are on the files with the correct address including zip. The next big reason for not receiving your magazine is that your membership has expired, and you are convinced it has not. So, before writing me one of those delightful letters analysing my ancestry, be sure to check your membership card. If you feel the expiration date on your magazine label is incorrect, take that up with your state membership director. Normally, if you are changing addresses your best bet is to notify your membership director, unless, your notification will arrive so late that the current issue will be gone, in that case mail direct to *The Chessman*. TC will then make the appropriate change and send your notice back to the state officer. Please include as much information as possible. For instance, old address name, expiration date, and state of membership. Otherwise it may be impossible to change your records.

Sending in games or crosstables: 1. Make sure game score is correct, best is to have a friend go over the game score. Fill out the heading on the score card with full names, many tournaments will have two or more players with the same last name. Crosstables should be last name first, and in finishing order, this makes it much nicer for everyone else to read. It is not necessary to type your input, but if your handwriting is small and your o's, a's and u's all look alike then you should type, and in no case is it wrong to type. Advertisizing in TC. It is becoming increasingly obvious that advertisizing in TC will bring more players to your tournament, the current charge is \$50. per page, \$25 half page. TC will make up your ad, but you should send in a rough draft of what you want. Over the last couple of years the USCF has had difficulty listing *The Chessman* correctly or in some cases at all. Many letters have been written (more than 20) and at least six long distance calls in an effort which I must admit has ended in failure. Mail including books and money that should come to 2672 Moss Lane goes all over the country, most of it hopefully ends up in the proper place, but alas some, too much, simply gets lost. The other day I called time on this problem and requested USCF President Sperling to please see to it that TC be listed correctly or not at all. I am certain that will solve the problem, and during this phase of the development of TC, I feel it would be best if TC were not listed.

In closing, let us welcome a group of guys from the Nashville area, Johnson Moore, Tom Farr, Brian McCarthy, Mark Ishee, and Joe C. Jones jr. Larry Floyd, Sycamore, Al., Joseph Hawkins III, Lafayette, La, Terry Mark Hardaway, Okla City, Okla. about forty new members in NC, we pushed over 200 in Pa., and my dear friends in New Jersey and Chicago and to paraphrase "I will be glad to write for you wonderful group of guys anytime, anywhere."

Peace.
JEM.

The Press

CROSSTABLES

ARKANSAS OPEN July 21-22, 79 Hot Springs, Ar.

Player	RTNG	Rd1	Rd2	Rd3	Rd4	Rd5	TOT
1 Donny Gray	1996	W10	W7	D4	W3	D2	4
2 Timothy Smith	1726	D14	W11	D5	W9	D1	3½
3 Larry Vajrosta	1674	W16	D5	W7	L1	W4	3½
4 Roger Q Martin III	1936	W15	W8	D1	D5	L3	3
5 Randall R. Jackson	1892	W6	D3	D2	D4	D8	3
6 Charles M. Niggel	1525	L5	W16	W8	D10	D7	3
7 Clinton Veach	1743	W12	L1	L3	W14	D6	2½
8 Majeed Nahas	1683	W13	L4	L6	W12	D5	2½
9 Gary Weeks	1674	L11	W14	W13	L2	D10	2½
10 Clayton L. Veach	1602	L1	D12	W11	D6	D9	2½
11 Steve Balsai	1432	W9	L2	L10	W15	D13	2½
12 Bob Nunnally Jr.	1458	L7	D10	D14	L8	W15	2
13 Eric Jones	1448	L8	W15	L9	D16	D11	2
14 Eric Bilsky	1449	D2	L9	D12	L7	D16	1½
15 Dan Breitenburg	1530	L4	L13	W16	L11	L12	1
16 Mike Cornett	1267	L3	L6	L15	D13	D14	1

RESERVE SECTION

1 White, Duane	1571	W30	W9	W8	W3	W6	5
2 Davis, Charles	1554	W22	W10	L4	W7	W11	4
3 Rowland, Larry A.	1487	W28	W21	W13	L1	W10	4
4 West, Michael	1418	W23	W11	W2	L6	W8	4
5 Mapili, Conrado	Unr	L21	W28	W16	W20	W15	4
6 Kozel, Craig	1448	D7	W27	W4	L1	L3½	3½
7 Naraghian, Khasrow	1104	D6	W15	W9	L2	W14	3½
8 Johnson, Gary L.	1428	W32	W26	L1	W22	L4	3
9 Shearer, Steve	1328	W17	L1	L7	W18	W21	3
10 Clingan, Michael	1305	W29	L2	W26	W12	L3	3
11 Garner, Tim	Unr	W14	L4	W21	L13	L2	3
12 Kramler, Tony	Unr	W16	L30	W30	L10	W22	3
13 Coulter, Warren	1401	W31	W12	L3	L11	D16	2½
14 Hardaway, Mark	1299	L11	W32	D18	W17	L7	2½
15 Ware, Robert	1290	D18	L7	W25	W7	L5	2½
16 Shearer, Mart	1216	L12	W23	L5	W26	D13	2½
17 Balleza, Cris	Unr	L9	D25	W28	L14	W27	2½
18 Guinagundo, Leoncio	Unr	D15	D20	D14	L9	W25	2½
19 Secuban, Andy	Unr	W25	L24	L22	W30	D20	2
20 Coulter, Wayman R	1547	L26	D18	W27	L5	D19	2
21 Duke, William	1212	W5	L3	L11	W23	L9	2
22 Jackson, W. P.	1154	L2	W29	W19	L8	L12	2
23 Corder, Craig	927	L4	L16	L32	W21	W31	2
24 Johnson, Earl C.	1530	D27	W19	L6	LF	-	1½
25 Sanders, Robert	1171	L19	D17	L15	W29	L18	1½
26 Scott, Clyde E.	1142	W20	L8	L10	L16	D29	1½
27 Standridge, Brent J.	1120	D24	L6	L20	W32	L17	1½
28 Fowler, John P.	1106	L3	L5	L17	D31	W32	1½
29 Collins, Joe	Unr	L10	L22	W31	L25	D26	1½
30 Hartman, Robert A.	1159	L1	W31	L12	L19	-	1
31 Carter, Royce	777	L13	L30	L29	D28	L23	½
32 Morris, Billy	1000	L8	L14	L23	L27	L28	0

THE LPO AMATEUR SECTION

1 Taffinder, Doug	SC	1710	W38	W73	W15	W25	W10	5
2 Zass, Peter	NC	1603	W60	W41	D22	W35	W8	4½
3 Evans, Glenn	NC	1470	W46	W43	D40	W41	W6	4½
4 Hardy, James	NC	1713	L28	W74	W53	W29	W24	4
5 Agamy, Gregory	La	1682	W8	W67	W37	W38	W31	4
6 Helle, Franklin	Mi	1673	W79	W31	L25	W60	W32	4
7 Spurrer, Robert	NC	1669	W56	W59	L10	W33	W21	4
8 Tyndall, John	NC	1636	W57	W32	W38	W13	L2	4
9 Harris, Neal	NC	1611	W58	W40	L13	W17	W25	4
10 Tobin, James	NC	1595	W50	W42	W7	W34	L1	4
11 Hyatt, James	SC	1581	D34	W36	W26	W18	D12	4
12 Easter, Ron	Tn	1486	W37	W63	W27	W22	D11	4
13 Judy, Harry	Va	1709	W80	W28	W9	L8	D14	3½
14 Igou, Rick	Tn	1696	W29	L38	W73	W28	D13	3½
15 Hunt, Nathan	NC	1623	W76	W33	L1	D40	W34	3½
16 Thornhill, Gary	Va	1761	W71	L25	W70	W47	L3	3
17 MacDonald, Ross	FL	1743	W52	L53	W51	L9	W44	3
18 Leffman, Frank	NC	1738	D27	W39	W19	L11	D26	3
19 Peele, Rhodes	NC	1731	W53	D26	L18	W65	D27	3
20 Jackson, Phillip	SC	1730	L73	W66	W52	L21	W51	3
21 Campbell, John	Va	1724	W66	L52	W72	D20	L7	3
22 Eoff, Robert	NC	1703	W54	W75	D2	L12	D30	3
23 Melton, Jeff	NC	1660	D30	L27	D39	W50	W59	3
24 Morgan, Clive	FL	1610	L31	W56	W59	W42	L4	3
25 Bailey, Ricky	NC	1602	W61	W16	W6	L1	L9	3
26 Becker, Mack	NC	1579	W68	D19	L11	W67	D18	3
27 Haynes, Brent	WV	1550	D18	W23	L12	W62	D19	3
28 Barksdale, Ronald	MD	1538	W4	L13	W43	L14	W52	3
29 Bell, Ray	NC	1523	L14	W46	W44	L4	W43	3
30 Leinbach, David	Tx	1469	D23	L37	W63	W48	D22	3
31 Dennis, Ron	NC	1455	W24	L6	W45	W49	L5	3
32 Tharrington, Arnold	NC	1413	W49	L8	W50	W37	L6	3
33 Lorimer, Frank	Tn	1390	W9	L15	W36	L7	W49	3
34 Bush, Harold	SC	1791	D11	W65	W48	L10	L15	2½
35 Pitts, George	Va	1771	W51	D48	W62	L2	-	2½
36 Hart, Patrick	SC	1768	D65	L13	W63	W64	W64	2½
37 Thompson, Brett	WV	1668	D12	W30	D5	L72	D39	2½
38 Newman, Patsy	NC	1512	W44	W14	L37	L5	D66	2½
39 Chester, Kevin	NC	1468	D62	L18	W23	W54	D37	2½
40 Solomon, Mark	FL	1793	D70	L9	D3	D15	D48	2

crosstable continued on next page

SUNSHINE OPEN July 7-8, 79 Florida

Player	RTNG	Rd1	Rd2	Rd3	Rd4	Rd5	TOT
1 Morgan, Clive	1610	W5	D2	W3	W5	W6	4½
2 Patterson, David	1515	L4	D1	W5	W6	W3	3½
3 Persante, Robert	1632	W6	W4	L1	W4	L2	3
4 Goodman, Michael	1647	W2	L3	D6	L3	LF	1½
5 Porcelli, Domini	Unr	L1	D6	L2	L1	WF	1½
6 Martorana, Anthony	1262	L2	D5	D4	L2	L1	1

SUNSHINE SATURDAY SWISS July 7, 79

1 Buel, Eric	1958	W14	W8	W4	3
2 Smith, Daniel	1669	D9	W14	W3	2½
3 Chung, Luke	1345	W10	W6	L2	2
4 Fernandez, Ivan	1835	W13	W5	L1	2
5 Stiers, Tom G.	2023	W7	L4	W10	2
6 Giovanis, Drew	1893	W15	L3	W11	2
7 Barker, Ron	1311	L5	W9	W8	2
8 King, Fred	1744	W11	L1	L7	1
9 Souce, Jim	Unr	D2	L7	D13	1
10 Ramos, Raulo	1055	L3	W15	L5	1
11 Meyers, Rick	Unr	L8	W13	L6	1
12 Claxton, John	1723	-	-	W14	1
13 Kerker, Ira	Unr	L4	L11	D9	½
14 Hernandez, Michael	1297	L1	L2	L12	0
15 Cauley, Gene	1274	L6	L10	Withdrew	0

THE LPO July 21-22, 79 Clemmons, N.C.

1 Ginsburg, Mark	MD	2355	W51	W30	W10	W17	W6	5
2 Samae, Greg	NC	2192	W32	D18	W42	W15	D3	4
3 Tiltins, Raymond	Mi	2126	D41	W11	W28	W18	D2	4
4 Liu, Daniel	NC	2001	W43	D6	D8	W23	W21	4
5 Dracup, James	NY	1951	W29	W14	W7	L6	W17	4
6 Kuroda, Paul	Ar	2205	W49	D4	W31	W5	L1	3½
7 Robinson, Henry	Tn	2037	W45	W39	L5	W36	D9	3½
8 Troscclair, Wayne	La	2025	W27	D42	D4	W22	D10	3½
9 Watson, Jim	NC	1986	D21	W35	W48	W38	D7	3½
10 Funkhouser, Dennis	WV	1958	W52	W13	L1	W14	D8	3½
11 O'Hara, Matthew	NY	1893	D12	L3	W50	W29	W30	3½
12 Carswell, George	FL	2165	D11	W26	L18	W41	D24	3
13 Fink, Stanley	MD	2157	W33	L10	W35	D20	D18	3
14 Smith, Arthur	Va	2123	W34	L5	W46	L10	W33	3
15 Gibbins, Wilson	WV	2087	D26	W50	W44	L2	D20	3
16 Shibut, Macon	Va	2027	W46	L20	W47	L21	W34	3
17 Acholonv, Gregory	DC	2021	W47	W38	W20	L1	L5	3
18 Nekvasil, Miroslav	DC	2015	W48	D2	W12	L3	D13	3
19 Moore, Vincent	DC	1943	L22	L28	W4	W45	W35	3
20 Lucas, Michael	Ga	1930	W23	W16	L17	D13	D15	3
21 Ardaman, Miles	FL	1818	D9	D24	W39	W16	L4	3
22 Bennett, Richard	Tn	1774	W19	L25	L53	L8	W43	3
23 Futigati, Richard	FL	1723	L20	Bye	W33	L4	W42	3
24 Harless, Paul	WV	1985	D44	D21	D29	W27	D12	3
25 Alden, Charles	NC	2014	L42	W22	L36	W44	D28	2½
26 William Bickham	NC	1885	D15	L12	L19	W49	W38	2½
27 Terry Newman	NC	1859	L8	W53	D30	L24	W44	2½
28 Steve Cabaniss	SC	1805	D40	W19	L3	D31	D25	2½
29 Robert Dunn	NC	1782	L5	W45	D24	L11	W41	2½
30 Alfredo Cruz	NC	2016	W36	L1	D27	W42	L11	2½
31 Anderson, Michael	SC	2030	D35	W50	L6	D28	-	2
32 Nolasco, Cornelio	WV	1896	L2	L48	W52	W46	-	2
33 Schultz, Donald	Ga	1892	L13	W43	L23	W47	L14	2
34 Scott, Joseph	Ga	1888	L14	W52	L38	W48	L16	2
35 Zielke, Chris	Oh	1878	D31	D9	L13	W39	L19	2
36 Barker, Marvin	WV	1833	L30	W51	L25	L7	-	1
37 Meidinger, Charles	Al	1730	L39	L46	Bye	W40	W48	2
38 Gerty, Edward	Va	1674	W53	L17	W34	L9	L26	2
39 Dana, Maurice	NC	1937	W37	L7	L21	L35	W46	2
40 Osborne, James	NC	1938	D28	L44	L41	W37	-	1½
41 Fuerstman, Leland	NC	1888	D3	L15	W40	L12	L29	1½
42 Prince, Robert	Va	1829	W25	D8	L2	L30	L23	1½
43 Sample, Roger	NC	1825	L4	L33	D49	Bye	L22	1½
44 Thompson, John Jr	NC	1777	D24	W40	L15	L25	L27	1½
45 Khataena, Moshe	Ma	1882	L7	L29	W51	L19	-	1
46 Henderson, Peter	Va	1866	L16	W37	L14	L32	L39	1
47 McCann, Mike	NC	1859	L17	W49	L16	L33	-	1
48 Baxter, Ken	NC	1831	L18	W32	L9	L34	L37	1
49 Griffith, Donald	WV	1902	L6	L47	D43	L26	-	½
50 Cooley, Allen	NC	1841	Bye	L31	L11	-	-	0
51 Amato, Amelo	MD	1903	L1	L36	L45	-	-	0
52 O'Bryant, David	NC	1805	L10	L34	L32	-	-	0
53 Spitzer, Richard	SC	1987	L38	L27	L22	-	-	0

PEACH STATE OPEN ATLANTA July 14-15, 79

1 Jones, Curtis	2147	W31	W11	W9	W2	W4	5
2 Vernilya, James	1922	W19	W18	W5	L1	W13	4
3 Scott, Joseph	1888	D20	W22	D13	W24	W10	4
4 Kolwick, Randy	2064	W25	W16	D80	W6	L1	3½
5 Lucas, Michael	1930	W32	W15	L2	D10	W14	3½
6 Schultz, Donald	1892	W33	D13	W14	L4	W17	3½
7 Simmons, John	1860	L13	W33	W12	D17	W16	3½
8 Whitman, Stephen	1828	L21	W28	W25	D16	W20	3½
9 Meidinger, Charles	1730	W26	W30	L1	D20	W22	3½
10 Wright, Bruce	1806	W28	W21	D4	D5	L3	3

THE LPO AMATEUR SECTION CONTINUED												
Player	St	RTNG	Rd1	Rd2	Rd3	Rd4	Rd5	TOT				
41 Cressley, Frank	Va	1770	W64	L2	W67	L3	-	2				
42 Herman, Stephen	NC	1742	W72	L10	W71	L24	-	2				
43 Necci, Frank	NC	1683	W55	L3	L66	L73	L29	2				
44 Carpenter, Richard	Tn	1683	L38	W80	L29	W66	L17	2				
45 Adams, William	La	1673	L75	W54	L31	W74	L55	2				
46 Laverne, Douglas	Tn	1664	L3	L29	D76	W78	D57	2				
47 Adickes, William	NC	1620	L76	W55	W75	L16	L56*	2				
48 Cohen, Stephen	NC	1610	W77	D35	L34	L30	D40	2				
49 Nagin, Herbert	DI	1597	L32	W81	W61	L31	L33	2				
50 Moore, Robert	NC	1597	L10	W57	L32	L23	W67	2				
51 Sabina, Harry	Tn	1576	L35	W77	L17	W76	L20	2				
52 Thabit, Norman	NC	1556	L17	W21	L20	W77	L28	2				
53 Thorpe, Tom	SC	1549	L19	W17	L4	L61	W73	2				
54 Ames, Dale	FL	1529	L22	L45	W58	L39	W76	2				
55 Mahan, Robert	Va	1520	L43	L47	W68	W70	L45	2				
56 Brooks, John	NC	1486	L7	L24	L74	W81	W77	2				
57 Jameson, Joseph	NC	1468	L8	L50	W80	D64	D46	2				
58 Gray, Ron	NC	1459	L9	L71	L54	W74	W74	2				
59 Leuba, Sanford	NC	1442	W69	L7	L24	W72	L23	2				
60 Pennell, Gary	NC	1438	L2	W64	W69	L6	-	2				
61 Hughey, James	SC	1419	L25	B16	L49	W53	-	2				
62 Lumdy, Gary	NC	1650	D39	W78	L35	L27	-	1 1/2				
63 Calloway, Paul	NC	1635	D78	L12	L30	L36	W79	1 1/2				
64 Pagu, Gary	Va	1571	L41	L60	W81	D57	L36	1 1/2				
65 Forman, Olin	NH	1567	D36	L34	W78	L19	-	1 1/2				
66 Cantrell, Albert	SC	1540	L22	L20	W79	L44	D38	1 1/2				
67 Harwell, George	NC	1464	W47	D5	L41	L26	L50	1 1/2				
68 Chin, John	NC	Unr	L26	L72	L55	D79	W81	1 1/2				
69 Stancil, Richard	NC	1609	L59	W79	L60	-	-	1				
70 Edmonds, Nathaniel	Va	1581	D40	D76	L16	L55	-	1				
71 Slamecka, Tom	WV	1563	L16	W58	L42	-	-	1				
72 Hoffman, Brian	NC	1553	L42	W68	L21	L59	-	1				
73 Mahaffey, Marion	SC	1548	W20	L1	L14	L43	L53	1				
74 Watson, Charles	NC	1537	L1	L4	W56	L45	L58	1				
75 Cobough, Harvey	NC	1492	W45	L22	L47	Withdraw	1	1				
76 West, James	SC	1469	L15	D70	D46	L51	L54	1				
77 Hayes, Lavaughn	NC	1452	L48	L51	Bye	L26	L56	1				
78 Baldwin, David	NC	1468	D63	L62	L65	L46	L68	1 1/2				
79 Smith, Robert	SC	1492	L6	L69	L66	D68	L68	1 1/2				
80 White, Mason	DC	1531	L13	L44	L57	Withdraw	0	0				
81 Mariolis, Peter	Tn	1511	L5	L49	L64	L56	-	0				

* in Novice Section

SOUTHERN OPEN Tampa, Fla.												
1 Cunningham, Dr. W.	2238	W16	D6	W17	W3	W2	W7	5 1/2				
2 Spitzer, Richard	1987	D14	W10	W13	W6	L1	W3	4 1/2				
3 Morash, John E.	1839	W20	W9	W12	L1	W6	L2	4				
4 Crook, Charles S.	1739	D13	W18	L6	W14	D5	W12	4				
5 Persante, Robert	1632	L6	D11	WF	W17	D4	W10	4				
6 Stiers, Tom G.	2023	W5	D1	W4	L2	L3	W14	3 1/2				
7 Parsons, John	2134	W19	L12	D10	W8	W9	L1	3 1/2				
8 Goodman, Michael H.	1647	L9	D20	W18	L7	W17	W13	3 1/2				
9 Carswell, George A.	2165	W8	L3	W19	W12	L7	-	3				
10 Clark, William O.	1783	W11	L2	D13	W16	L5	3	3				
11 Patterson, David L.	1515	L10	D5	L14	W18	D15	W17	3				
12 Roland, Jere F.	1838	W15	W7	L3	L9	D13	L4	2 1/2				
13 Crimmins, James M.	1450	D4	W16	L2	D1C	W12	L8	2 1/2				
14 Small, David	1632	D2	L17	W11	L4	W19	L6	2 1/2				
15 Morgan, Clive	1610	L12	L19	L16	Bye	D11	W18	2 1/2				
16 Trapp, Richard	1650	L1	L13	W15	W19	L10	-	2				
17 Uhlmann, Robert C.	1806	D18	W14	L1	L5	L8	L11	1 1/2				
18 Simons, Jim	1526	D17	L4	L8	L11	Bye	L15	1 1/2				
19 Chinn, Duke	1635	L7	W15	L9	L16	L14	-	1				
20 Randolph, James Lee	1631	L3	D8	Withdraw	-	-	-	1 1/2				

AMATEUR SECTION												
1 Mobley, John	Unr	W18	D3	W15	D8	W5	W6	5				
2 Perkins, William T.	1475	D7	W17	W11	L6	W12	W3	4 1/2				
3 Kirsch, Robert A.	1355	W14	D1	D7	W4	W6	L2	4				
4 Deter, Paul	New	W10	W15	L6	L3	W16	W11	4				
5 Cawley, Gene	1274	L6	W13	W16	W7	L1	W9	4				
6 Clemenson, Eric B.	1489	W5	D11	W4	W2	L3	L1	3 1/2				
7 Martorana, Anthony	1262	D2	W12	D3	L5	D8	W17	3 1/2				
8 Hart, Stephan	1312	D12	D16	W10	D1	D7	-	3				
9 Gibson, Rondal	1210	L15	L10	W13	W18	W14	L5	3				
10 Jennings, Nicholas	1335	L4	W9	L8	L14	W17	W18	3				
11 Cooper, Barry N.	1349	W13	D6	L2	L12	W18	L4	2 1/2				
12 Cotter, Jasper D.	1505	D8	L7	W14	W11	L2	-	2 1/2				
13 Woas, Brian	979	L11	L5	L9	D17	Bye	W14	2 1/2				
14 Barkin, Mike	1068	L3	W18	L12	W10	L9	L13	2				
15 Iglesias, Mariano	1432	W9	L4	L1	D16	-	-	1 1/2				
16 West, Archie	1368	D17	D8	L5	D15	L4	-	1 1/2				
17 Klug, Harry	1147	D16	D2	L18	D13	L10	L7	1				
18 Deas, Charles Earl	1323	L1	L14	W17	L9	L11	L10	1				
19 Tennan, Alan	1410	D20	-	-	-	-	-	1 1/2				
20 Woas, Brian	979	D19	-	-	-	-	-	1 1/2				

US WOMEN'S CHAMPIONSHIP

UCLA	July 1979
1 Rachel Crotto	10 1/2
2 Ruth Haring	8 1/2
3 Diane Savereide	7 1/2
4 Karen Street	6
5 Allison Bert	5 1/2
6-7 Gisela Gresser	5
Greta Olson	5
8-10 Pamela Ford	4
Diana Lanni	4
Susan Sterngold	4
11 Katherine Gasser	3 1/2
12 Ekaterina Stolyarov	2 1/2

The above report was furnished by the USCF.

THE PEACH STATE OPEN CONTINUED												
Player	RTNG	Rd1	Rd2	Rd3	Rd4	Rd5	TOT					
11 Fatigati, Richard	1723	W34	L1	W23	L13	W25	3					
12 Johnson, Eric	1634	L23	W35	L7	W29	W24	3					
13 Derthick, Mark	1549	W7	D6	D3	W11	L2	3					
14 Hawkins, Ralph	1721	W35	D23	L6	W19	L5	2 1/2					
15 Southerland, Gary	1710	W29	L5	D19	D23	D21	2 1/2					
16 Igou, Rick	1696	W27	L4	W21	D8	L7	2 1/2					
17 McCarthy, Brian A.	1661	L30	W26	W31	D7	L6	2 1/2					
18 Harris, David	1650	W36	L2	LF	D30	W27	2 1/2					
19 Burel, Keith	1565	L2	W36	D15	L14	W30	2 1/2					
20 Cobb, Jeffrey R.	1551	D3	D24	W30	D9	L8	2 1/2					
21 Crowell, William H.	1537	W8	L10	L16	W36	D15	2 1/2					
22 Goffrey, Scott	1386	D24	L3	W23	WF	L9	2 1/2					
23 P.L.N. Murthy	2119	W12	D14	L11	D15	-	2					
24 Mullis, Don	1716	D22	D20	W32	L3	L12	2					
25 Jurjevich, John	1631	L4	W27	L8	W28	L11	2					
26 McIntyre, Richard	1485	L9	L17	L36	W35	W32	2					
27 Spinks, Larry S.	1361	L16	L25	W5	W32	L18	2					
28 Knuckles, Herbert	1491	L10	L8	W35	L25	D29	1 1/2					
29 Rodgers, Michael	1382	L15	L32	W34	L12	D28	1 1/2					
30 Corbett, Joseph	Unr	W17	L9	L20	D18	L19	1 1/2					
31 Milojic, Novica A.	1645	L1	W34	L17	-	-	1					
32 Corbett, Claude W.	III1627	L5	W29	L24	L35	L26	1					
33 Rane, Paul Jr.	1557	L6	L7	L22	L34	WF	1					
34 Kinsler, Winston K.	1467	L11	L31	L29	W33	LF	1					
35 Refuss, W.C.	1448	L14	L12	L28	L26	Bye	1					
36 Spivey, James H.	Unr	L18	L19	W26	L21	LF	1					

TOURNAMENTS

Sept 15 RAM V NC
Carolina Union, Chapel Hill, NC 3-SS, in 8 player sections. **EF:** \$3; **Prizes:** \$15 to 1st in Top section, Trophies to 1st in others. **TL:** 40/90; **NCCA Membership req'd, Reg:** 9-10 AM. **Rds:** 10:30 3-7; **LS:** USCF + EF = \$15, Jr = \$9, p Jr. = \$5. **Enter:** Tom Galloway, 406 Morrison, Chapel Hill, N.C. 27514.

Sept 21-23 Liberty Bell Open Pa
5-SS, **TL:** 30/100, Sheraton Hotel, 1725 Kennedy Blvd., Philadelphia, Pa. 19103. \$5,000 Guaranteed cash prizes. In 4 sections:
OPEN: **EF:** \$39.50 if mailed by 9/17; \$45 at site **Prizes:** \$1000-500-300-200, 2000-2199 or unrated \$200-100, under 2000 \$200-100. **Reg:** ends at 7 PM, **Rds:** 8:30, 12-6:30, 10-4:30.

Booster: Open to under 1800 or unrated. **EF:** \$34.50 if mailed by 9/17; \$40 at site. **Prizes:** \$500-250-150-100, no unrated may win over \$200. **Reg:** ends at 7 PM, **Rds:** 8:30, 12-6:30, 10-4:30.

Reserve: Open to under 1600 or unrated. **EF:** \$29.50 if mailed by 9/17; \$35. at site **Prizes:** \$400-200-120-80, no unrated may win over \$120. **Reg:** ends at 6 PM, **Rds:** 7:30, 11-5, 9-3.

Novice: Open to all under 1400 or unrated. **EF:** \$24.50 if mailed by 9/17; \$30 at site **Prizes:** \$300-150-90-60, no unrated may win over \$60. **Reg:** ends at 6 PM, **Rds:** 7:30, 11-5, 9-3.

ALL: Players who were rated 201 or more points above class maximum on any list/supplement 12/76 or later may not win over \$50 in that class. \$2 off advance EF to **PSCF MEMBERS**. 1/2 point bye in round 1 or 2 (not both) available (must request bye with entry); mailed entries taking bye must add 25¢ to EF. **HR:** 23-27-30-33. **Enter:** Continental Chess Assn., 450 Prospect Ave., Mt. Vernon, NY 10553 **NS**

Sept 29-30 9th Annual Hatboro Open Pa
5-SS, 40/80; **EF:** \$10 by 9/19, \$15 at site, \$1 less to **PSCF MEMBERS**; **Prizes:** (\$500 b/60) \$100 gtd, or (\$250 b/30): \$200-100-50, Top under 1800, 1600, 1400 each \$50. **Reg:** 8:30-9:30 AM. **Rds:** 10-2:30-7, 9:30-2:30; **Enter:** Richard Kraft, 546 Coach Rd., Horsham, Pa. 19044. **NS**

Oct 5-7 Columbus Weekend Tournament FL
5-SS, Pompano Beach Recreation Center, 1801 NE 6th St. Pompano Beach, Fl. (Off Rte 1) \$1500 GUARANTEED PRIZE FUND! In two sections:
OPEN: \$15 Advance **EF:** **Prizes:** \$300-200-100, \$50 upset prize, Top woman and Unrated prize, Top class prizes.

RESERVE: \$10 Advance **EF:** **Prizes:** \$175-125-75, Upset prize.

ALL: **TL:** 45/2, **RDS:** 7:30, 10-3, 9-2; **REG:** ends at 7 PM Friday night; 1 point bye if requested in advance; **FCA Membership Req'd** (Other states OK); **NS;** **ENTER:** D. Stone, Box 2004, Ft. Lauderdale, Fl. 33303. Sponsored by the Pompano Beach CC.

Oct 6-7 Knob Open VI Ar
5-SS, **TL:** 45/2, Pine Bluff Best Western Hotel Hwy 55 B North. **ACA Membership req'd** (Other states OK). **Reg:** 8-9 AM, **Rds:** 9:30-1:30-6:30, 8:30-1:30. **EF:** \$15, Unrated \$8, if received by 9/29; \$17, Unrated \$9, at site. Free entry fee for first tournament. **Prizes:** \$100-50, B,C,D/E, each \$50, Unrated \$40. **Trophies:** Top 2, Top B, C, D/E, Unrated. **Enter:** Donny Gray, Rt 8; 1645 Whipporwill Ln., Pine Bluff, Ar. 71602 or call (501) 247-3461.

Oct 13 Dragon I NC
3-SS, 40/90 Powell Dr. Park (Community Center), Powell Dr. just off Western Blvd, Raleigh, NC 27606. **EF:** \$4, USCF \$15, NCCA \$5 all req'd. **Prizes:** \$21 to first in each section. **Reg:** 9-9:50 AM, **Rds:** 10-2-6. **Enter:** Louis E Cobb Jr., 5234 Vann St., Raleigh, N.C. 27606

Oct 13-14 Chess Day Classic Ga

5-SS, 45/2, in two sections:
OPEN: **EF:** \$14.50 if received by 10/6, \$16.75 at site. **Prizes:** (b/30) \$125-75-50, B and below \$50.

AMATEUR: (Open to under 1600 or unrated) 5-SS, 40/90. **EF:** \$12.50 if received by 10/6 \$14.75 at site. **Prizes:** (b/40) \$110-60-50, Top D,E,Unr each \$50.

ALL: **Reg:** 8:30-9:30 AM 10/13. **Rds:** 10-3-8, 10-3. **NS,** **GCA Req'd** (Other states OK), **ENT:** Steve Hunt, 66 Maypop Lane, Decatur, Ga. 30035. Hotel Rates: \$26 single or double. These rates are HALF the regular price. Enjoy the indoor pool and sauna: at the luxurious Marriott Hotel Perimeter Center, I-285 at the Ashford-Dunwoody Exit.

Oct 14 October Quick Quads Ga
3-RR, 30/30 **EF:** \$3.50 if received by 10/6; \$7.00 at site. **NS,** **GCA req'd** (others OK), **Prizes:** Trophy to first each section. **Reg:** 12-12:45 PM; **Rds:** 1-2:30-4. Enter and site same as tournament above.

Oct 20-21 Sunshine Fall Open FL
5-SS, **TL:** 45/90, Holiday Inn South, 4601 34th St. S., St. Petersburg 33711. In 4 sections, first prize in each section is guaranteed, other prizes are based on twenty players in that section.
OPEN: **EF:** \$12.50 if rec'd by 10/15. **Prizes:** \$100-60-40.

AMATEUR: **EF:** \$10.50 if rec'd by 10/15. **Prizes:** \$80-48-32. Open to those under 1750 and unrated.

RESERVE: **EF:** \$8.50 if rec'd by 10/15, **Prizes:** \$60-36-24. Open to under 1500 and unrated.

NOVICE: **EF:** \$6.50 if rec'd by 10/15, **Prizes:** \$40-24-16. Open to under 1250 and unrated.

ALL: **EF:** \$2.50 more at site. Players buffet \$5.00 per person at 2 PM Sat. **Reg:** 7:30-8:30 AM, **Rds:** 9-3-7:30, 9-2. **HR:** \$30-34-38-42. **FCA Req'd** (others OK), **Enter:** John Claxton, P.O. Box 10334, St. Petersburg, Fl. 33733. **NS.**

Oct 20-21 USC Novice Open SC
6-SS, Univ. of SC, Moore Dormitory Conference Room, 1215 Blossom St., Columbia. Open to under 1300 and unrated. **EF:** \$8, if rec'd by 10/17, \$12 at site. **Prizes:** based on 25 \$35-25-15, Top under 1200, under 1000 each \$15. **Trophies:** to Top 2, Top under 1200, Top under 1000. **Rds:** 9:30-1-4:30, 9-12:30-4. **Enter:** Donald Lemaster 1471 Pine St., West Columbia, S.C. 29169. **LS,** S.C. Membership req'd (others ok).

Oct 20-21 Orrie's Perm Palace No. 2 Pa
4-SS, Orrie's Perm Palace, 1520 N. Broad St., Philadelphia, Pa. 19120. In two sections:
OPEN SECTION: **TL:** 40/80, 30/60; **Reg:** 10-12 N; **RDS:** 1-6, 10-3; **EF:** **PSCF MEMBERS** \$20 in advance, by 10/10, \$22 at door; Non-members \$3 more. **Prizes:** Guaranteed \$125-80-40-30-25-15-10, Class prizes Exp,A,B,C,D/E/Unr \$25-10 EACH. **Trophies:** Top 4, Top 2 per prize group.
RESERVE SECTION: **TL:** 40/60, 30/30, **Reg:** 10-noon **Rds:** 1-5, 10-2, **EF:** **PSCF MEMBERS** \$10 (by 10/10) \$12 at door, Non-PSCF Members \$3 more. **Trophies:** Top 4, Top 3 under 1400, 1300, 1200, 1100, 1000/Unr & Top upset.
BOTH: **Enter:** Ira Lee Riddle, Fox Run Apts #F24 365 Newtown Rd., Warminster Pa. 18974 or call 215-674-9049.

Oct 28 Penn Jersey Fall Tornado Pa
4-SS, 40/1, **EF:** \$4, Non PJCC members \$6 or \$8 at site, \$1 off to **PSCF MEMBERS**, Enter & site Penn Jersey CC, Hillcrest Ave, Morrisville, Pa call Ira for more info (see above) **Prizes:** Trophy to Top 2, Top A/B, C/D, E/Unr, Jr, Upset. **RDS:** 10-1-4-7; **Reg:** 9-9:45 AM.

Oct 28 Phila. October Quads Pa
3-RR, **TL:** 40/80, Sheraton Hotel, 1725 Kennedy Blvd., Phila., 19103. **EF:** \$20. **Prizes** \$40 to first each quad. **Reg:** 8:30-9:30 AM; **Rds:** 10-2-6, Eastern Chess Assn.

Nov 3-4 Scorpion I NC
5-SS, 40/90, NC State University, Student Ctr., Room 3118, Raleigh, NC. **EF:** \$6, USCF & NCCA Req **Prizes:** (\$125 b/32) \$40-30, under 1599 \$25-15, under 1200 \$15. **REG:** 9-9:50 AM, **RDS:** 10-2-6, 10-2; **Enter:** Louis E. Cobb Jr., 5234 Vann St., Raleigh, NC 27606.

Nov 3 PSCF Awbury Quads Pa
Awbury Rec. Ctr., Ardleigh & Haines St., Phila **EF:** \$5 to **PSCF MEMBERS**, \$7 to others; **REG:** 8:30 to 9 AM. **RDS:** 9:30 then consecutively; **TL:** 40/40, 30/30. **Prizes:** \$12 to 1st or Trophy. Also Non-Prize Sects, **EF:** \$2 **PSCF**, \$3 Non-PSCF.

Nov 9-11 South Carolina Closed Championship SC
5-SS, Tremont Motor Inn, 111 Knox Abbott Dr., US Hys 176-21-321S., Cayce (Columbia) 29033. **REG:** 6-7:30 on 11/9 (Championship); 8-9:15 on 11/10 (Open). **Prizes:** \$770/30 Championship, 45 Open; and Trophies. **NS.** In two sections: Championship: **TL:** 45/2, Open to SC residents, students, and soldiers. **EF:** \$20., If rec'd by 11/7, **Prizes:** \$150-125-90, Top under 1550 & Top 1550-1699 each \$44; Trophies to Top 2, Top Jr. **RDS:** 8, 9:30-2:30, 9-2.
OPEN: **TL:** 40/90, open to under 1600 & unrated. **EF:** \$12, if rec'd by 11/7. **Prizes:** \$97-70-45, Top D, Top E, Top Unr, and top inmate. **Rds:** 9:30-2-6:30, 9-2.

ALL: **SCCA Req'd** (others OK) **HR:** 19.76-24.96-27.04. Enter Don Lemaster, 1471 Pine St., West Columbia, S.C. 29169. **EF** \$4 more at site, Inmates \$6 in Open section.

Nov 10-11 Philadelphia November Open Pa
4-SS, Sheraton Hotel, In 2 sections.
OPEN: **EF:** \$25, + \$5 at site, \$1 less if **PSCF**. **Prizes:** \$200-150, 100-A, 50-B GUARANTEED
RESERVE: (Under 1600) **EF:** \$22, + \$5 at site, \$1 off to **PSCF**. **Prizes:** \$200-100, D Prize \$60-40, E Prize \$60-40. Trophies to Top C,D,E,Unr.
ALL: **RDS:** 10-3, 10-3, **REG:** 8:30-9:30. Enter Eastern Chess Assn., 345 N Rolling Rd. Springfield, Pa. 19064.

Nov 17-18 Chaturanga Open Pa
Loller Academy, 424 S. Old York Rd., Hatboro, Pa. 19040. 5-SS, **Reg:** 9:00-9:45, **TL:** 40/80, 30/1 **RDS:** 10-2:30-7, 10-2:30, **NS.** **EF:** \$10 if rec'd by 10/31, \$15 at site, \$1 off to **PSCF MEMBERS**. A minimum first prize of \$100 is GUARANTEED. **Prizes:** (\$500 b/60) \$250-100, Top A/B \$75., TOP C/D \$50., TOP E \$25. Enter: Richard Kraft, 546 Coach Rd., Horsham, Pa. 19044.

Tournament Reports

SEVEN TIE IN WORLD OPEN; GHEORGHIU WINS PHILADELPHIA INTERNATIONAL By Bill Goichberg.

The 7th annual World Open, held June 30-July 4 at the Sheraton Hotel in Philadelphia, drew a disappointing 893 players, its smallest entry since 1976. The 374-player Open Section, however, set new records for strength for open events with 7 GMs, 14 IMs, 62 players over 23 hundred, and a total of 89 masters. The prize fund was \$46,000, a new record for opens.

Seven players tied for the top places with 8-2 scores, winning \$1686 each. In order of tiebreaks, they were: Haukur Angantýsson of Iceland, GM Tony Miles of England, GM Florin Gheorghiu of Rumania, and four Americans: GM Walter Browne, GM Arthur Bisguier, IM Bernard Zuckerman, and IM John Fedorowicz.

Scoring 7 1/2 were GM Pal Benko, IM Norman Weinstein, IM Yehuda Gruenfeld, IM Ed Formanek IM Lawrence Day, IM Margeir Petursson, Bruce Rind, and Vincent McCombridge. Rind and McCombridge shared "untitled master" prizes, each winning \$600.

World Open Tournament Directors were Bill Goichberg, Thad Rogers!, Ira Lee Riddle!, and 9 others.

Scoring 8-2, GM Florin Gheorghiu of Rumania took first place in the Philadelphia International played July 9-18, just as he had in last year's summer international. The GHI in New

York. Gheorghiu also tied for first in the World Open each year, and in Lone Pine in 1979, and in all five of these powerful tournaments, a total of 49 games, he has gone undefeated!

Gheorghiu held a clear lead from round 6 until the end, drawing early with Diesen and Peters and in the last two rounds with Benko and Gruchacz. In the final round, though, he was challenged by Peters, who could have tied for first and earned the GM title by defeating M. Wilder. Jack was two pawns up and seemed to have a winning position, but then allowed strong counterplay and agreed to a draw in a probably losing position. Under the rules by which existing GMs were judged, Peters would have earned his 3rd GM norm and his title, but under the new FIDE rules, he was 1/2 point short. It was his third IM norm, so at least he will gain that title.

GM Pal Benko tied for third with Robert Gruchacz, the later making his first IM norm with a half point to spare. Following with 6 1/2 were GM Rosendo Balinas, IM Mark Diesen, IM Murray Chandler, Haukur Angantytsson, Larry D. Evans, Steve Odendahl, and Michael Wilder. Scoring 6 were IM Margeir Petursson, John Meyer, Sergey Kudrin, Sunil Weeramantry, Richard Britton, Walter Shipman, and James Rizzitano.

Many players earned FIDE-ratable performances at the World Open and Philadelphia International. Those who now have sufficient games in such performances to qualify for a FIDE rating on the Jan. 80 list include Walter Shipman, Elliott Winslow, Allan Savage, Shelby Lyman, Joseph Pundy, Kenneth Clayton, Ron Gross, Charles Hertan, Sidney Bernstein, and Matthew Katreine.

The International was directed by Bill Golchberg and organized by the CCA. Without a substantial donation from the American Chess Foundation, both this tournament and the Marshall International in March would not have been possible. With USCF now unable to give financial aid to such events, the American Chess Foundation's support is proving vital to the continued development of our many promising young masters. Contributions to the Foundation are tax deductible and may be sent to Allen Kaufman, P.O. Box 15, Whitestone, NY 11357.

Robert Szendroi Wins 6th Tri-County Open in Pa.

Four wins and one draw won for Robert Szendroi the \$70 first prize in the 6th Tri-County Open held May 26 & 27 at the Loller Bldg. in Hatboro. Rich Costigan took 2nd place and a \$35 prize with four points. The third prize of \$20. was shared by Greg Nolan & Richard Pariseau with 3 1/2 points. Pariseau drew Szendroi in Rd. 4. The \$25 prize for best player rated under 1800 was shared by Richard Harry, E.O. Mastin Jr., and Donald K. Minus, scoring 3 points each.

SUNSHINE JULY OPEN

The modest turnout in no way reflected the fierce struggle for every point. Of special note is an incredible endgame from the open section, Porcelli-Martorana Rd2. Although a Bishop and a Rook up, Martorana had to settle for a draw!! Young Luke Chung's tie for third is another indication that his 1345 rating will start to climb when they turn the computer loose.

Both winners, Clive Morgan and Eric Buel, went undefeated during their conquest. Morgan did have to settle for a second round draw with David Patterson.

John Claxton directed for Sunshine Chess.

ARKANSAS CHESS ASSOCIATION BUSINESS MEETING

I. ELECTION OF OFFICERS:

- A. EDITOR Craig Kozel
- B. SECRETARY Mike Clingan
- C. TREASURER Chuck Niggel
- D. VICE PRESIDENT Donny Gray
- E. PRESIDENT Danny Williamson

II Chessman Magazine: Passed 17-10

ACA Policy is not to charge USCF commissions and ACA dues are now \$5/adults; \$3 juniors

III Ar. Jr. Championship:

Late November-Directed by Tim Smith.

IV Ar. Championship- Late August next year; not Labor Day.

V. Ar. Open - 3rd week in July

Reserve: 1499 and below.

Open: 1500 and above

VI. All memberships are to end on June 30.

Less work for the treasurer.

VII. Announcements:

A. Ar. Championship

B. Knob Open

C. Church Fried Chicken Simo- next year

CLEARINGHOUSE REPORT

	TOURNAMENT SCHEDULE	Pa.
Sept. 22-23	CCA Grand Prix in Philadelphia	
Sept. 29-30	9th Annual Hatboro Open	
Oct. 20-21	Orrie's Perm Palace #2	
Oct. 28	Penn-Jersey Fall Tornado	
Oct. 28	Philadelphia Quads	
Nov. 3	PSCF Awbury Quads	
Nov. 10-11	Philadelphia November Open	
Nov. 17-18	Chaturanga Open	
Jan. 16-17	Swiss Team Tournament-Warminster	

EDITORIAL

Late Returns

It is difficult to compare participation statistics on the US Open, because the tournament is moved from city to city each year. However, last year in Phoenix, the tournament drew 500 players and previously in Chicago, 773 players. The prize fund was upped a hefty 35% this year and optimist expected 1000 players, 563 showed up.

The World Open did somewhat better with 893 players in 79 versus 1063 in 78, a 15% drop.

The USCF simply dropped the National Open rather than face a sea of red ink.

Two of the nations prominent chess publications, Northwest Chess and Chess Horizons report substantial drops in circulation. The Chessman has done somewhat better than that, would you believe an increase of 55% in the last ten months? In Florida and Pennsylvania chess is in bloom and in Georgia and the Carolinas participation at "Chessman" tournaments has held tight (The ICI Classic and The LPO, down 6% or less), but we can do better than that.

If we want the US Junior Open next year in Chapel Hill, and a successful US Open in Atlanta next August, a bigger LPO, progress all over Pennsylvania, and unity and growth in the Mississippi River basin, then we are going to need a little help.

We need to get together in the Charlotte - Rock Hill area and put on some tournaments, they will have our full support. Chess along I-85 from Atlanta to Greensboro and Winston-Salem depends on us getting off the ground in the Queen City.

We need a better magazine, we need more circulation, therefore, be sure to carry your copy of The Chessman around to church socials, barn raisings, and submarine races. We need more articles, remember this is not a magazine you just receive, this is one you write.

We need more members, any program will work better with more members. Money and finesse, will work wonders, of course, but solid progress comes from members. JEM.

NOTICES

The GCA treasury is in trouble, and I need your help to solve the problem. By helping the GCA you will actually save money. This is not double talk, you will save money.

The USCF recently raised their dues, the new rates will go into effect Jan. 1, 1980. By renewing your membership now, through the GCA, you save on the increase while at the same time you help the GCA because, the association will receive a commission on each membership.

For example, if you extend your USCF membership three years, the new rates will be \$55.00. The current rate is \$40.00. Therefore, you save \$15.00 and the GCA receives a commission of \$4.

We have just obtained the 1980 US Open for Atlanta. Your GCA officers are anxious to help

further promote chess in the state, but we cannot do this without funds. I do not wish to see the GCA raise its dues. With your help this will not be necessary. So submit your USCF renewal to our treasurer now.

Donald D. Schultz, Pres.
send to: Mike Decker, 1259A North Morningside Dr., Atlanta, Ga. 30306

The following table shows the rate increases and the commission to the GCA.

MEMBERSHIP	OLD RATE	NEW RATE	SAVES	COMMISS.
3 Years	\$40.00	\$55.00	\$15.00	\$4.00
Junior	21.50	27.50	6.00	3.00
2 Years	28.50	38.00	9.50	3.50
Junior	15.00	20.00	5.00	2.50
1 Year	15.00	20.00	5.00	3.00
Junior	8.00	10.00	2.00	2.00

Don't delay send your renewal today.

PRISON CHESS

If you look at the problems in our society as they existed 30 years ago: race relations, female status, highway deaths, polio, crime, mental health, and others, you realize we have made substantial progress against these problems, all save one.

Crime has continued to flourish and expand over the last 30 years, and here in Atlanta it has become far and away our leading concern, to such an extent that social groups interested in other problems, such as unemployment, transportation, health, etc. try to associate themselves with the crime problem. Our political leaders talk of nothing else, state troopers have been assigned to the city government to patrol Atlanta's streets, and the Wall Street Journal refers to Atlanta as a "War zone".

Our prisons have failed to reform the criminals brought to them. Modern theorist believe the institutionalizing of people for a long period of time makes reentry into society difficult, and that the jails themselves are but a training ground for our criminals.

Chess offers the inmate some contact with the outside world, and something to occupy his time and his mind. Statistics indicate that chess playing inmates have lower recidivism rates. There is no doubt that, to some extent, chess playing by prisoners is simply an indication of a better state of mind as opposed to non-players, but it is more than that, much more. We need to support prison chess.

The Cleveland Chess Foundation, P.O. Box 5268, Cleveland Ohio, 44101 is an effective way to get books and supplies to our prisoners.

JEM

BOOKS

"SCHROEDER ON CHESS"

The thing I like about this little gem is that it is exactly what it purports to be, therefore, I'll just run the ad associated with it.

24 full pages of excerpts from the Elite Chess Bulletin, numbers 1 through 5.

This may be your last chance to savor Schroeder's pungent prose, because he is moving into backgammon! Send \$3.00 for 1 copy or \$5.00 for 2 copies.

Send to James R. Schroeder - Box 5268 - Cleveland, Ohio 44101.

THE CENTER GAMBITS by John F. Hurt

This 120 page book of opening lines must be the most exhaustive study ever printed on the Danish Gambit and 270 lines in the Scotch Gambit. The book includes 120 complete games including the Denker/Gonzalez game elsewhere in this issue. The book is well done, excellent printing, well organized, and carefully edited.

This \$6.50 book is published by Chessco, 1506 Harrison St., Davenport, Iowa 52803. The author appears on the cover of this issue and you can read more about this great chessplayer under "Cover Story".

ORGANIZATION

The Chicago Fire

What's up in Pennsylvania Chess

I was quite frankly amazed at the recent delegates meetings in Chicago. A few months ago, a call was sent out by USCF Secretary Myron Lieberman for items to be discussed on the agenda. He might have well saved his time. None of the items proposed by the Delegates ever came up for discussion, except where they overlapped the Policy Board's recommendations. The first session, on Saturday morning, August 4, was involved with seating delegates (This involved a challenge to one of the New Jersey delegates.) and also with the agenda, changing it around a bit. This argument continued until after lunch, at which point the treasurer's report began. The end of the treasurer's report came around 11 p.m. that evening, when the budget was finally passed. Along with the budget came a dues increase. (If you are coming up for renewal soon, do so for as long a period as you can afford. Adult dues will go to \$20. per year, Juniors to \$10. The original Policy Board proposal did not include Participating Junior memberships, but they were voted back in at \$3.)

On Sunday morning, more arguments ensued. By the end of the day, computers were allowed to play in tournaments, it was decided that delegates would ask their constituents what should be discussed on the national level, and that CLAR's name will revert back to Chess Life as soon as legally and physically possible. It was also decided that the US Open be allowed to experiment with a 9 or 10 day format, to run from weekend to weekend. This is not mandatory, but may be tried if wished.

When I left the Policy Board meeting on Monday morning, it appeared that Thad Rogers would get the U.S. Open bid for Atlanta next year. I hope that he did so. (He did -Ed.)

Pennsylvania was not too well represented at the Delegate's meetings. I was the only delegate there. Roy Kress, an alternate, was also there. That was it. In order to have more, intelligent voices there (That refers to a number of people, not an evaluation of intelligence.), I appointed one person from SC and one from Ill. to fill out our delegation. Before you start worrying, Roy and I talked to all the Pa. players we could find and asked them to become delegates, but none could do so. My wife is not a USCF member, so she was out.

One of the highlights of the entire week-end was the Tournament Director's Seminar run on Friday morning, Aug. 3. It was well attended, and wound up with Bill Lukowiak wasting a rule book, literally burning it. After the discussions we had on it, that is about what it deserves. Denis Barry, who chairs the TDCP committee, had his committee continued on for another year in order to rewrite the rule book.

One of New York's Regional Vice Presidents resigned in disgust over the manner in which the Delegates were arguing over everything and not getting any business done. His letter of resignation provoked another 30 minutes of argument over whether or not he was personally attacking anyone in the room. (I think he made his point.)

By the time you read this, our membership meeting will have been held, as will the State tournament. I want to take this chance to thank the Chaturanga Chess Club for their publicizing our PSCF-Awbury Quads in their newsletter. That publicity was the only publicity we got in advance of the tournament, thanks to our editor's broken leg. (Don't you think skateboarding is fun, Earle????) Chaturanga has been having a series of simulms with Bruce Rind, an International Master. See our calendar for their next one.

Thanks also to Bill Goichberg, whose World Open gained PSCF 23 members. We are now rapidly approaching 200 members. As of today, Aug. 11, we have 187 members, and we haven't even held our State tournament yet. Our treasury is slowly building up a little bit. We are still

in the black, but if the turnout for the State tournament was low, then we may be in the red. The Quads at Awbury have netted a little bit of money for us. If anyone wishes to host quads, let me know. What we do is split the money three ways, into approximately equal parts--to the state, and to the TD. We are also building up our treasury through memberships in the US CF.

Again, I repeat an offer made a few months ago. If you have need of tournament directors, contact me. I would like to eventually compile a list of all TD's in the state. I am willing to direct almost anywhere for expenses and a nominal sum, if you cannot afford too much.

With the last issue, we began listing all tournaments known to be coming up in the future. We will continue this service to organizers as long as they tell me what is coming up. The response to my previous letter was small, only one organizer sent me some envelopes, and three phoned me with information. I hope that the various clearing houses will let me know about three months in advance what is happening.

See you around. Also, Joe Ohler would like to be contacted by all Scholastic Chess Leagues as soon as possible.

Ira Lee Riddle

USCF Delegates Meetings

The 1979 annual USCF Delegates meetings were bogged down in procedural detail. The first half day of the two day session was devoted to agreeing on the agenda! A great amount of time was spent on reading the budgetary details. This information should have been available to the delegates for their review, prior to the meeting. Unfortunately, a late report from the accounting firm prevented this. Nevertheless significant decisions were made at the delegates meeting as well as related Policy Board and membership meetings. I'll highlight the key items:

(A) Atlanta was chosen as the site for the 1980 U.S. Open! although no other city submitted firm bids, this decision was adamantly opposed by at least two Policy Board members. The basis of their arguments was that Atlanta or any Southern City would not have a large enough tournament. The Atlanta group is not only committed to proving this minority wrong, but intends to make the 1980 Open the most enjoyable and successful ever.

(B) The length of the U.S. Open was reduced (by the delegates) to one long 10 day week. Friday evening extending through the following Sunday. There would be one round per day. I understand that a Policy Board interpretation of the delegates vote establishes this as an option beginning in 1981. Therefore, the 1980 U.S. Open will be the traditional two week event.

(C) The USCF dues were increased to \$20. per year.

(D) CLAR has been renamed Chess Life.

(E) The previously adopted Master Candidate, Expert, Expert Candidate, Advanced etc has been thrown out. A new numerical category system has been adopted. The new rating system designations are:

2400 -	Senior Master
2200 - 2400	Master
2000 - 2200	Expert

Classes A through E have been replaced by category 1 through 5 and a new below 1000 category has been added, category 6.

(F) The one item discussed that had major philosophical implications was the question of "Whether or not computers can play in open chess tournaments." Discussions on this were the most lively and stimulating. I anticipate a great deal of pro and con arguments on this in the coming years.

(G) Several individuals were honored at the meetings and awards dinner. I will mention three. Arpad Elo, George Koltanowski, and Bert Hochberg who has just resigned as editor of Chess Life.

The Chicago group, Dick Verber and all as-

sociates should be congratulated on their fine organization effort on both the meetings and the tournament.

Don Schultz

Chess 0.0

This month, just about everything I have to say is in the article Everything you want to know about the NCCA. Membership is 271 members and the treasury is at \$600.

By the way in case anyone's wondering (I doubt it, but I can hope!) the name of this column comes from the CHES 5.0 computer program (sorry Duchess!). The 0.0 just about describes my chess programming skill and also, since I started directing, my relative chess playing skill!

Hey, Earle! when do I get a column header like Denker's? Next issue I'll include my two games against GMS, Christiansen (a draw!) and Browne (a total wipeout). Will that get me one? Tune in next issue and find out.

Also remember my new address is 406 Morris-on, Chapel Hill, NC 27514. Phone 919-933-4279.

Tom Galloway

EVERYTHING YOU WANT TO KNOW ABOUT THE NCCA BUT ARE AFRAID TO ASK.

by Tom Galloway

Conversation overheard at a RAM Tournament. Player - What do I get for joining your club?

Organizer - Well for \$10 you get a membership card signed by me, the right to play in our tournaments and a non-existent magazine.

Player - Hey I can get that for only \$5. from the NCCA.

Laughter from the players, and a dirty look from the TD.

This exchange pretty well sums up the problems the NCCA had over a period from late 1977 through most of 1978. The magazine problem has been solved by inclusion in The Chessman, but a lot of people still wonder exactly what their dues go for. Also, several members have brought up complaints or questions that should be made known to all members.

First off, \$3 of a years dues go to pay for The Chessman. Thus, no profit is made on junior memberships and only \$2 per year on adult memberships. Take a look at the membership total, figure that between 75-100 members are juniors and figure up the amount of money for all other activities for the year.

So what is the money spent on? Well, first there's the NC Invitational. The top three from the closed, last year's Invitational winner and the two top rated players, are invited for a round-robin tournament. If any of these decline the next highest rated are invited. Last year, Greg Samsa and Ed Kites tied for first. A \$35. prize is offered, invitations must be mailed out and a director's fee paid.

Secondly, there's the unique, to my knowledge, practice of supplying free tournament supplies to all tournaments which require NCCA memberships. Printing and postage tend to mount up. I just had 2000 scoresheets printed for \$24. Also, general correspondence cost such as stamps and envelopes and occasionally phone calls for NCCA business must be paid.

Another "cost" is our 15 life members who "cost" \$45 per year for their magazine subscriptions.

The NCCA also provides services that do not cost money, but which few people seem to know about. The most important of these is the tournament clearinghouse which is run by Al Lipkin. When a tournament is planned, write Al and ask if any other tournament is planned for the same day. This way we can avoid, say, a tournament in Chapel Hill, and one in Raleigh or Fuquay-Varina the same day.

Members can now receive a copy of the entire membership list by writing me and including postage. I've worked out a computer program that

will be running (free) by the time you read this. Thus, you can find out who's in your area to play or go to tournaments with.

Another aspect of this program will enable me to reinstate the NCCA rating list next issue. Old members will remember this list of NCCA members ordered by rating from the Carolina Gambit. Only problem is that due to the deadline for The Chessman coinciding with the receipt of a new supplement, ratings will be one supplement out of date. I'm sorry, but I have no intention of looking up 300 names and key punching new ratings in one day.

Now for the complaints and questions:

Q: Why doesn't the NCCA have its own magazine?
A: Find an editor who'll type everything up, a printing firm and a guarantee of material for every issue and then ask that. Being the editor of a publication involves a lot of work. How many members would be willing to do it for free? You'll have to be able to cost less or the same as The Chessman. Also, you'll have to get more material.

Q: How come there's not more NC stuff in The Chessman?

A: No one sends anything in. Take a look at the last issue. Everything in there is from Bill Wall or myself. All of the NC games were "hustled" by me. We need games, tournament reports, and crosstables, articles (especially by our higher-rated players) funny stories, letters to the editor, satire, anything you can think of.

Q: Why is the closed always in Chapel Hill? The scholastics in Raleigh?
A: Nobody bids on them. The way the scholastics were placed was I called Larry Matthews and said "Do you want to hold the scholastics again. No one's bid for them." He agreed and ended up losing a small amount of money. No one put in a bid for the closed except UNC. If you would like to hold the closed or collegiate, send a bid or request for information to Bill Wall. For the scholastics, write me.

Q: Finally; what do you intend to do in the future?

A: OK, these are the ideas I have in mind. I don't guarantee that any of them will happen, and I'd like to hear from others about their ideas and any offers to help with these. First, I'm trying to get the U.S. Junior Open for Chapel Hill in 1980. See the article in this issue. Some new features for The Chessman. Columns by our best players, interviews, etc. New tournaments. An NC Open, Team championship, Speed championship, Junior championship, TD only tournament. Merit awards for players. Corporate sponsorship of tournaments. A postal match with another state. Press releases to tournament winner's home newspapers. A National Chess League team. I need help with any and all of these. Please write!

CLUB NEWS

NEWS FROM UPSTATE S.C.

By Marvin S. Chappell Jr.

In the quad tourney of July 7th at Dinkins Student Center of Winthrop College in Rock Hill had four sections. Section I was won by Candidate Master Marvin Chappell of Rock Hill with a 2 1/2 - 1/2 score. Section II was won by Candidate Expert Jimmy King of Rock Hill with a 3-0 score. Section III was a tie between Intermediates Mike Houk of Fort Mill and Terry Belk of Charlotte at 2-1 scores. Section IV resulted in a tie between Charles Blackwell of York and Barry Latta of Marschville with scores of 2 1/2 - 1/2.

The Rock Hill Chess Club has plans for a 5 round swiss in three sections: Open, under 1800 and under 1400. The site will be Dinkins Student Center of Winthrop College and is slated for September 29-30.

Winthrop College is in the process of starting the Winthrop Gamers' Club and has over 30 "Gamers" waiting for school to start in the fall. This will really boost Rock Hill's "roots" to draw on in the future.

I would like to welcome Candidate Expert Fred Wilson to the S.C. chess scene. He just moved from Charlotte to Clover S.C. And I would like to relay a bit of bad news. I have regret-

fully, learned that Expert Leland Fuerstman of Charlotte has moved to the Kansas City area. I would like to wish him luck in his new position, and all miss his participation and competitiveness!!

Editors Note: Leland has since returned to Charlotte.

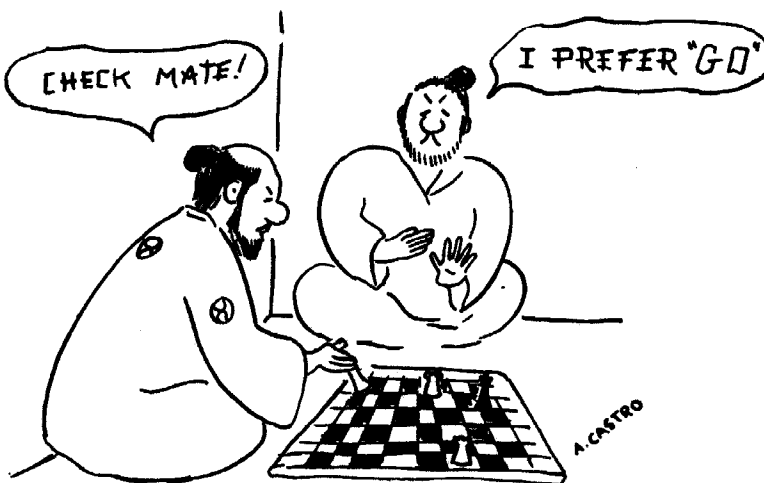
JACKSONVILLE CHESS CLUB

By Ed Butler

State of the club message:

The past ten months has been a fruitful era for our organization. The help I received from the fellow officers and directors made the year a success. Harold Carney, George Jackson, Ed Miller and Bob Turrill and others, have done their jobs well, and came to my aid many times.

In the past ten months we have held some kind of tournament every month. The Jacksonville High School Championship, the Jacksonville City Championship, and the \$2000.00 Classic. From these tournaments we have gained much needed publicity and as a consequence our membership has gone up from 18 members to over 60 members. Attendance at our meetings now averages about 25 to 30 members or more.



NC CLUB OF THE MONTH

UNC-CH CC By Tom Galloway

The UNC-CH CC sponsors what are probably the most successful one day tournaments in the country, the RAMs. They regularly draw 45-50 people, and the smallest last year was 44. They have been going on for at least 7 years and possibly more (anybody know how many?). They are also some of the strongest, drawing experts and class A players usually.

UNC is known for its athletics, but we have done almost as well in chess. In 1977, UNC finished 9th in the Pan-Am. Last year we won the NC Collegiate Championship. Since the Pan-Am's in Los Angeles this year, we'll probably go to the US Team instead.

Attendance varies at the weekly meetings on Thursdays at 7:30 in the Carolina Union, depending on the number of mid-terms the next day. Players from outside the college community are welcome. No dues are charged!

UNC is also the perennial home of the NC Closed and Invitational Championships, and is putting in a bid for the U.S. Junior Open for 1980. Any High School players interested in attending UNC are invited to attend a meeting. As far as I know, neither Duke or NC State have active chess clubs. That immediately suggests several jokes, but why pick on the poor Dookies and Moo U. students.

But seriously, everyone (even Dookies) is welcome at the meetings. For more information, write the club dictator, Tom Galloway, 406 Morrison, Chapel Hill, NC 27514 or call (919) 933-4279.

LETTERS TO THE EDITOR

Dear Sirs:

24 July, 1979

As of this date I have not received my July-August issue of your magazine. Could it be my postman has not finished reading all the great articles? (That's silly, I know he can't read.) I enjoy your magazine very much and never go anywhere without my copy. When I can't have it near me, I tend to be sulky and I'm prone to temper tantrums, so, if you don't want me to hold my breath till I turn blue please send my magazine.

I truly appreciate the tremendous effort that goes into this fine publication. Thank you very much for the many hours of enjoyment gained through reading your magazine.

Sincerely;

Jim Lazenby

Dear Earle,

8/14/79

Your magazine is getting better and better. I'll see what I can do for you here in Virginia

Barry Barrentine

8/19/79

Sorry about delay. Board meeting set for next week. Think I can convince them to go with you.

Regards,

John (Hurt)

US Junior Open

How would you like to play in the 1980 US Junior Open? Well if you're still under 21 next summer, you're eligible. Moreover, how would you feel about playing if it was held in the South? Specifically, at UNC-Chapel Hill.

The UNC Chess Club is planning to place a bid for the tournament. As I write this, it is late July so I don't know yet if the administration will al-

low us to use a dorm and a university facility for a playing site. I'll let you know next issue.

Next issue, however, will be out in November. Assuming we are allowed use of the facilities, we'll need certain information before then, such as the anticipated number of players and a "substantial guarantee against loss". Here's where you can help. If you are interested in playing in a US Junior Open in Chapel Hill, please send me a postcard with your name, ID# and Birthdate. Mail this to Tom Galloway, (NC Officers). And remember, mail before midnight tonight. Seriously, the USCF has told me that the prime prerequisite for holding the tournament is that it appear able to break even financially. If I can say X number of players are interested and provide proof, it would greatly help the bid.

Of course, I'm going to try to have a company put up the money for the tournament. Even if I succeed though, the more money, the better the chances. If you'd be interested in either helping with a guarantee or making a straight donation, please write. I am planning to put up some of my own money. Just how much will depend on corporate fund raising efforts.

I'm really excited about this, and think we have a good chance of getting the tournament if the facilities are available, and I'm pretty sure they will be. Please write and express your interest in attending as soon as possible.

Tom Galloway
President UNC-CH CC.

It sounds like the right time and the right place to me. I hope all of our young players will write Tom and get this on! -JEM.

3 BIG TOURNAMENTS

OCTOBER 13-14

ATLANTA

Stay at the luxurious Marriott Hotel
for half price! (\$26-S or D), 246 Perimeter Center
Parkway N.E. (I-285 at Ashford-Dunwoody exit)

CHESS DAY CLASSIC 5-SS 45/2

E.F. \$14.50 IF REC. BY 10/6; 16.75 AT SITE

PRIZES: (based on 30 in section): 125-75-50, B/BELOW \$50

CHESS DAY AMATEUR (Open to Under 1600) 5-SS, 40/90

E.F. \$12.50 IF REC. BY 10/6; \$14.75 AT SITE

PRIZES: (based on 40 in section): 110-60-50 D,E,Unr - 50

BOTH: REG: 8:30-9:30 AM, RDS: 10-3-8, 10-3

October Quick Quads - Sunday 3-RR 30/30

E.F. 5.50 IF REC. BY 10/6; 7 AT SITE

PRIZES: Trophy to 1st each section

Reg: 12-12:45; Rds: 1-2:30-4

ALL: GCA REQUIRED (OTHER STATES OK) NO SMOKING

**ENTER: Steve Hunt, 66 Maypop Ln.,
Decatur, Georgia 30035**

**THE CHESSMAN
2672 MOSS LN.
MARIETTA, GA. 30067**

**SECOND CLASS
POSTAGE PAID
AT
MARIETTA, GA. 30060**