

The Chessman

PRICE 75¢

NOV-DEC 1979



**THE STATE CHAMPIONSHIPS
HOCHBERG INTERVIEW
SCHULTZ RESIGNS**



NOV-DEC 1979

Volume 3

Number 2

Editor-in-Chief
J. Earle Morrison

Associate Editors

Ar. Craig Kozel

Fl. Arnold Denker

Ga. Alison Bert

NC Tom Galloway

Pa. Ira Lee Riddle

SC Lee Hyder

Correspondents

Bill Goichberg

Robert M. Snyder

Games Editors

Donny Gray

Tom Morris

Chuck Braun

Mike Decker

Alex Dunne

Ar. CHESS ASSOCIATION	FL. CHESS ASSOCIATION
President	President
Danny Williamson	Gilbert Cantrell
2316 S. Pine St.	4040 67th Ave. N.
Little Rock, Ar. 72204	Pinellas Park, FL 33565
Vice President	Vice President
Donny Gray	Larry Storch
709 S. Linden	1622 E. Harding Ave.
Pine Bluff, Ar. 71603	Orlando, FL 32806
Treasurer	Sec-Treas.
Chuck Niggel	Flora Cantrell
213 South Valmar	(same as President)
Little Rock, Ar. 72205	Phone: (813) 527-6010
Secretary	Directors:
Mike Clingan	Dr. Juan Gonzales
Rt. 2 Box 203	Mark Solomon
Gurdon, Ar. 71743	Steve Goins
Editor	John Claxton
Craig Kozel	Tom Mercer
P.O. Box 94	Alan Tenan
Perryville, Ar. 72126	

NORTH CAROLINA CHESS ASSOCIATION
President: Bill Wall, Box 167, Stony Point, NC 28678 Phone (704) 632-5751
Vice Pres: Alan Lipkin, 2635 Glenhaven Lane, Winston-Salem, NC 27103.
Sec-Treas. & Editor: Tom Galloway, 411 Morrison, Chapel Hill, NC. 27514

JOIN THE EASTERN CHESS SOCIETY

BENEFITS: You will receive The Chessman six times a year, and be entitled to special discounts on USCF memberships.

Adult 1 Yr. SC \$6.00, with USCF \$18.00; Ar, FL, NC, & Pa. \$5.00 with USCF \$17.00; Ga \$5.00, with USCF \$20.00

Adult 2 Yr. Ga. \$9.00
 Junior 1 Yr. Ar, FL, NC, Pa, SC. \$3.00 with USCF \$7.00; Ga. \$5.00 with USCF \$13.00

Junior (No magazine) SC \$1.00, with USCF \$3.00; Ga. \$2.00 with USCF \$4.50.

Send Memberships To:

Arkansas: ACA, 2316 S. Pine St., Little Rock, Arkansas 72204.

Florida: FCA, 4040-67th Ave., N. Pinellas Park, FL. 33565

Georgia: GCA, 1269A N. Morningside Dr., Atlanta, Ga. 30306

North Carolina: NCCA, 411 Morrison, Chapel Hill, NC. 27514

Pennsylvania: PSCF, Fox Run Apts F24 365 Newtown Rd., Warminster, Pa 18974

South Carolina: SCCA, 7 Winthrop Dr. Aiken, SC. 39801.

Make checks payable to: ACA, FCA, GCA, NCCA, PSCF, or SCCA.

Subscription Only \$4.00 Send to The Chessman, 2672 Moss Lane, Marietta, Ga. 30067. Phone (404) 952-8259

NAME: _____

ADDRESS: _____

CITY: _____

ZIP CODE (REQ'D): _____

If Junior Birthdate: _____

GEORGIA CHESS ASSOCIATION

President

D.D. Schultz

4798 Olde Village Lane

Dunwoody, Ga. 30338

Vice President

L. Thad Rogers

3055 General Lee Road

Macon, Ga. 31204

Phone (912) 742-5607

Secretary

Bill Noyes

777 Briarcliff Rd.

Atlanta, Ga. 30306

Treasurer

Mike Decker

1269A North Morningside Dr.

Atlanta, Ga. 30306

Editor

Alison Bert

1914 Jacolyn Place

Atlanta, Ga. 30329

PENNSYLVANIA STATE CHESS FEDERATION

President:

Ira Lee Riddle

Fox Run Apts. #F24

365 Newtown Rd.

Warminster, Pa. 18974

Phone (215) 674-9049

Vice President:

Tom Magar

1120 Jacks Run Rd.

N. Versailles, Pa. 15137

Secretary:

Bob Dudley

107 Crosstree Rd.

Coraopolis, Pa. 15108

Treasurer:

Gary Connors

93 Serene Dr.

Holland, Pa. 18966

Phone (215) 355-0878

COVER PICTURE

Front Row left to right: State Champion Anatoly Dozoretz, TD Ira Lee Riddle, Rich Costigan.

Second Row: Top A Art Mitchell, Bob Szendroi, Bruce Fortado

GAMES

Rambling Along	By Arnold Denker	3
Beating a Grandmaster	By Alex Dunne	3
Orlando Chess Club	By Larry Storch	4
Pawns Hard to Stop in NY	By Bill Goichberg	4
Atlantic Open	By Tim Brookshire	4
The Arkansas Championship	By Craig Kozel & Donny Gray	5
West Virginia Championship	By Mark S. Hathaway	6
Editor's Page	By Mark S. Hathaway	7
A Complicated Game	By Mike Decker	9
Pennsylvania State Championship	By Ira Lee Riddle	10
North Carolina Closed Championship	By Tom Galloway	11
Schultz Resigns	By Don Schultz	12
Seirawan Wins The World Junior	By Denis Druash	12
Late News		13
The Press	By Earle Morrison	13
Books	By Earle Morrison	13

WHERE TO PLAY CHESS

CHESS CLUBS		14
TOURNAMENTS		14
CROSSTABLES		15
ORGANIZATION		
PSCF Constitution		18
The USCF		
Bad Luck Bytes	By USCF	19
Hochberg Interview	By Helen Warren	19
NC & National News	By Tom Galloway	21
What's up in Pa. Chess	By Ira Lee Riddle	21
Foreign Policy in Chess	By M. Lee Hyder	21
On the Grapevine with Pevine		22
Letters To The Editor		22
Florida Chess Association Business Meeting		22
Clearing House Report	By Ira Lee Riddle	22
Chess 0.0	By Tom Galloway	22
North Carolina Business Meeting		23
Tournament Reports		23

POSTMASTER

The Chessman (ISSN 0194-7370) is published bimonthly. subscription rates are \$4.00 per year, by The Chessman Co. 2672 Moss Lane, Marietta, Ga. 30067. All rights reserved. Reproduction in whole or in part without written permission is prohibited. Second Class postage paid at Marietta, Ga. 30060. Send address changes to The Chessman, 2672 Moss Ln. Marietta, Georgia 30067.

USPS 476-790

S.C. CHESS ASSOCIATION

President:

William Dodgen

2008 Robin Road

N. Augusta, S.C. 29841

Vice President:

Marion Mahaffey

1207 Memorial Park Rd.

Lancaster, S.C. 29720

Secretary:

Charles Braun

7 Winthrop Dr.

Aiken, S.C. 29801

Treasurer:

Harold Kelley

811 Rhododendron Pl. SE

Aiken, SC 29801

Editor:

M. Lee Hyder

33 Longwood Dr.

Aiken, S.C. 29801

WEST VIRGINIA CHESS ASSOCIATION

President:

Donald Griffith

865 Carroll Road

Charleston, W. Va. 25314

Vice President:

Brett Thompson

1677 6th Ave. #5

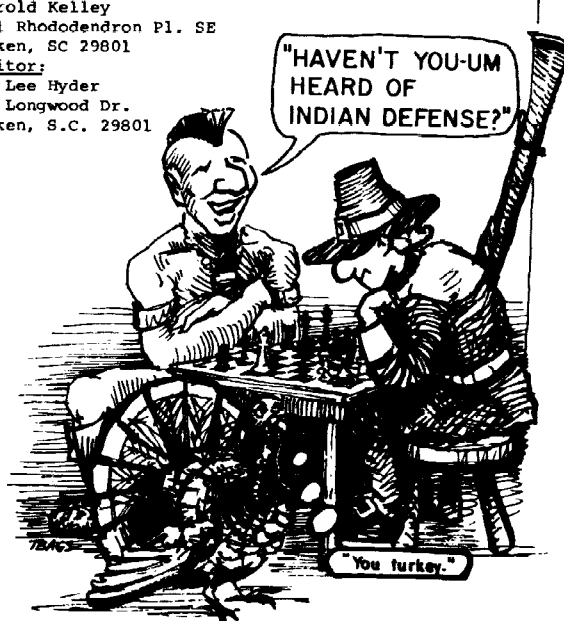
Huntington, W. Va. 25703

Editor:

Mark Hathaway

159 Sycamore St.

Huntington, W. Va. 25705



FLORIDA STATE CHAMPIONSHIP

September 3, 1979

St. Petersburg, Fl.

SICILIAN DEFENSE

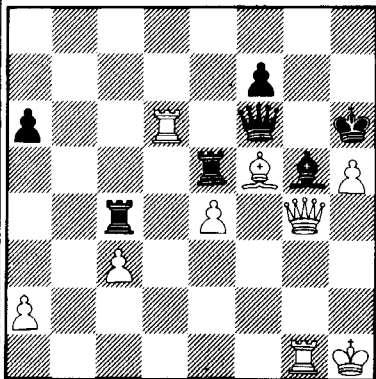
PELIKAN VARIATION

(W) George Carswell (2165)

(B) Dr. Gonzales (2285)

1 P-K4	P-QB4	18 B-N4	N-N3
2 N-KH3	P-K3	19 P-KN3	K-N2
3 P-Q4	PxP	20 N-B5+	BxN
4 NxP	N-KB3	21 BxB	R-H5
5 N-QB3	N-B3	22 Q-N4	P-N4
6 N(4)-N5	P-Q3	23 P-R5	B-N4
7 B-KB4	P-K4	24 P-B4	PxP
8 B-N5	P-QR3	25 PxP	NxP
9 BxN	PxB	26 NxN	KR-K1
10 N-R3	B-K3	27 O-O	P-N5
11 N-B4	N-Q5	28 N-Q5	PxP
12 N-K3	P-KR4	29 PxP	K-R3
13 QN-Q5	B-R3	30 K-R	R-K4
14 P-QB3	N-B3	31 QR-Q	Q-K
15 P-KR4	QR-B	32 R-KN1	Q-Q1
16 B-K2	K-B	33 NxBP	QxN
17 BxP	N-K2	34 RxP	1-0

Dr Gonzales



George Carswell

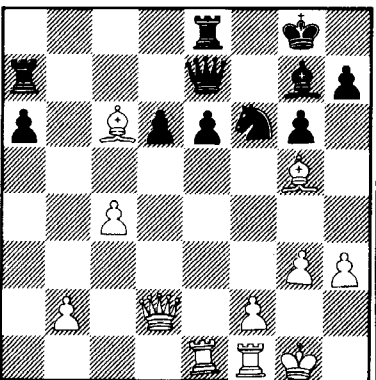
FLORIDA STATE CHAMPIONSHIP

CATALAN SYSTEM

(W) Arnold Denker (B) R. Shocron

1 P-Q4	N-KB3	13 QR-K	B-Q2
2 N-KB3	P-KN3	14 N-N3	NxN
3 P-KN3	B-N2	15 PxN	P-QR3
4 B-N2	O-O	16 Q-Q2	P-QN4
5 O-O	P-Q3	17 B-B4	B-QB
6 P-QB4	QN-Q2	18 B-N5	PxP
7 N-B3	P-K4	19 PxP	B-K3
8 P-KR3	P-B3	20 N-Q5	PxN
9 P-K4	R-K	21 KPXP	R-R2
10 B-K3	PxP	22 PxB	PxP
11 NxP	N-B4	23 B-B6	1-0
12 Q-B2	Q-K2		

Ruben Shocron



Arnold Denker

RAMBLING ALONG

BY ARNOLD DENKER

An awful lot has been happening in chess since our last issue. It looks like chess in Region IV is beginning to move ahead at last. Shortly after Atlanta was designated as the home of the next US OPEN, Richard Fatigati of Miami announced that he had completed financing for a match between Walter Browne and Victor Korchnoi. Then after some hurried calls from Dr. Dulles of the US CF, and with the help of Dr. Gonzales and the Latin Community of Miami, a match was quickly arranged between Argentina and Miami for the week of September 15-22.

As if all of that wasn't enough the Florida Chess Association annual meeting and Championship Tournament brought out the **biggest turnout ever**. There were 175 players in spite of Hurricane David. Some early entries failed to show up, while others arrived only to be called by their wives to get home at once and start boarding up. The Championship division consisted of 42 players and from the roster of masters you can see that it was one of the strongest ever held. After six rounds the final standings were: Denker 6, Carswell 5, and Small 4 1/2.

I played well throughout having had the benefit of playing in three strong tournaments which had the effect of putting me into the best shape that I have been in in a long time. Carswell played extremely well and deserved his high prize. He is a much under rated player with a fine understanding and appreciation of chess. If he played in California his rating would be 100 to 150 points higher. Our third prize winner Greg Small, who not long ago won the National High School Championship, is a very talented player. Were it not for a slip, in his game with Shocron, he would have been a more serious threat to the top two. His game with Nardandrea was a beauty.

After the tournament I went over to Patrick Air Force Base where I had previously arranged to train and help select their team which was competing in the Armed Services Championship in Washington DC. When I got there the base was closed, "David" having hit the day before. However, the next day, and still without air conditioning, we got started. After working on openings I gave a clock simo and then we began a short tournament to decide who would represent the Air Force. The winners of this hotly contested event were Moore and Davis 3 1/2 followed by Bady and Martin 3. It was an interesting experience and I was most pleased to have been part of it.

By the time you read this I will be off somewhere in Russia or Poland where I am going to see some of my very old chess friends. When I get back I will give you a full report. In the meantime here are a couple of key games from the Florida Championship.

Beating a Grandmaster is tough, even for other grandmasters. It is a special day, then, when you can fell one. Albany, 1979, saw Grandmaster L. Shamkovich lose a hard fought game.

ALEKHINE'S DEFENSE

MODERN VARIATION

(W) A. Dunne
(B) L. Shamkovich

1 e4	Nf6	4 Nf3	Bg4
2 e5	Nd5	5 Be2	c6
3 d4	d6		

Something clicked--I remembered this line from an old Botvinnik game.

Black plays to prove the e-pawn weak. Botvinnik thought castling weak here.

6 O-O!	B:f3	8 d:e	e6
7 B:f3	d:e	9 b3	...

Unbooked and possibly good. White will protect his e-pawn come what may.

9 ...	Nd7	11 Re1	Bb4
10 Bb2	Qc7	12 Re4!	...

The Rook is well placed here, and the e-pawn secure.

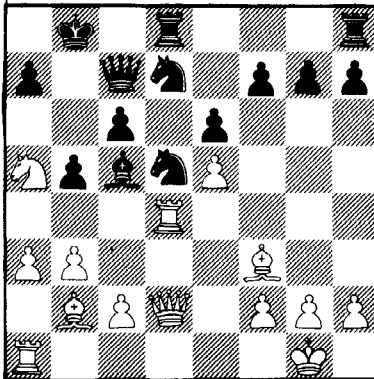
12 ...	O-O-O	14 Nd2	Nc5
13 a3	Bf8	15 Rd4	Nd7

Of course, 15...Q:e5 loses to 16 R:d5, Q:b2; 17 R:d8+, K:d8; 18 Nc4+

16 Nc4 Kb8 17 Qd2 ...

White's game is very strong. After the Queen Rook moves, he is fully mobilized with an advantage in space and time. Shamkovich plays to complicate the game.

17 ... b5 ?! 18 Na5 Bc5



19 c4 ! ...

White will not retreat! 19...B:d4 20 c:d5, B:b2; 21 N:c6+, Kc8; 22 d6, Qb6; 23 Q:b2 when White will have fun attacking Black's sickly King.

19 ... N:e5!? 20 c:d5 N:f3+

21 g:f3 B:d4 23 N:d4 R:d5
22 N:c6+ Kb8

White has an advantage--N+B against R+P, but such advantages have to be won.

24 Rc1	Qd7	28 B:c1	f6
25 Qc3	Rd8	29 Ne3	Ob7
26 Ne2	Rd1+	30 Qa5	Rd6
27 Kq2	R:c1	31 Nc3?	...

A slip--31 Nd4!, a6; 32 N:e6! wins a pawn, 32...R:e6? 33 Qd8+ & 34 Qd5+ wins the Rook.

31 ...	a6	35 Qd4	f5
32 Ne4	Rc6	36 Nc5	Qe7
33 Qd8+	Rc8	37 Qe5	Qd6!
34 Qd6	Rc6		

Now an endgame is reached where Black seems to have fair drawing chances.

38 f4	Q:e5	40 b4	Kc8
39 f:e5	Kb8	41 Kg3	...

To win this endgame White must invade Black's Kingside and win a pawn there.

41 ...	Kd8	43 h4	...
42 Kf4	Ke7		

This pawn will form a breach in the Black pawn structure.

43 ...	Rc8	48 a:b	Ra1
44 Kg5	Ra8	49 K:h7	Kf7
45 h5	a5	50 Nb7	Rh1+
46 h6	g:h+	51 Bh6	f4
47 K:h6	a:b		

Step one has been accomplished. Now step two is to win one of the center pawns and make a new Queen or win Black's Rook.

52 Nd6+ Ke7 53 Kg6 ...

While N:b5 might win too, White pursues his plan.

53 ...	Rb1	57 Nb7	Rd5
54 B:f4	R:b4	58 f4	b4
55 Bg5+	Kd7	59 f5!	
56 Kf7	Rd4		

Starting an intricate endgame win. The White e-pawn is to be forced through.

59 ...	e:f	61 e7	Re5
60 e6+	Kc6		

Post-mortem analysis showed 61... Rd7; 62 Nd8+, Kb5 63 Ne6, b3; 64 Bf6 led to a win.

62 Nd6!

An immune Knight--62...K:d6; 63 Bf4 wins.

62 ... Kd5 63 N:f5! ...

A magic Knight--63...R:f5+; 64 Bf6 wins.

63 ... b3 64 Ne3+; ...

More tricks--64...R:e3; 65 B:e3, b2; 66 e8(Q), b1(Q); 67 Qe6 mate.

64 ... Kc6 65 Nc4 1-0

The b-Pawn is thoroughly blockaded the e-pawn will cost Black a rook, and a Bishop and Knight will eventually mate a King, if you're lucky. My first Grandmaster!

JACKSONVILLE CLASSIC
June 23, 1979
SICILIAN DEFENSE
NAJDORF VARIATION
POLUGAYEVSKY SYSTEM
(W) Larry Storch (A)
(B) Jorge Massana (Master)
Notes by White.

1 P-K4 P-QB4 5 N-QB3 P-QR3
2 N-KB3 P-Q3 6 B-KN5 P-K3
3 P-Q4 PxP 7 P-B4 P-N4
4 NxP N-KB3

One of the sharpest lines in the Najdorf.

8 P-K5 PxP 10 Q-K2 ...
9 PxP Q-B2

10 PxN, Q-K4+ is another popular line.

10 ... KN-Q2 12 Q-N4: ...
11 O-O-O B-N2

A sharp line! Some even prefer 12 N-KP1? here.

12 ... QxP

A bold reply.

13 B-Q3 ...

Other moves tried here are 13 BxP1? and 13 B-K2.

13 ... B-K2

Black took 40 minutes for this risky reply. 13...P-R3 or 13...N-KB3 are possible.

14 BxB KxB 16 N-B5+ K-B1
15 KR-K1 P-KR4: 17 Q-KR4 P-N4:

The only move! If now 18 Q-N4+, Q-B4

18 QxNP Q-B3 19 QxQ ...

Sacrificing the Knight was possible but unclear.

19 ... NxQ 20 N-K4: QN-Q2

If 20 ...PxN 21 NxN or 20...NxN 21 BxN, BxB 22 R-Q8 mate.

21 N/B-Q6 B-Q4 22 R-B1?!

22 N-N5! was better.

22 ... K-K2 34 B-Q3 B-B5
23 QR-K NxN 35 BxB NxB
24 NxN QR-QB1 36 NXR P-KN1
25 N-N5 P-B3 37 P-QN3: PxP
26 N-B3 BxP! 38 PxP N-N3
27 N-R4 K-Q3 39 R-Q2 N-Q4
28 N-N6 R-R3 40 N-B4 RxR
29 N-B4 N-K4 41 NxR K-B3
30 B-K4 P-R4 42 P-N3 N-K6
31 R-K3 P-QR5 43 N-B4 R-B1+
32 R-KR3 P-B4 44 K-N2 R-B3
33 R-Q1+ K-K2 45 P-R4 P-K4

With time control reached (barely), White has to fight for the draw.

46 N-Q5+ NxN 50 R-Q5 P-B7
47 RxN P-B5 51 R-Q1 K-K4
48 PxP P-B5 52 R-KB1 R-B3
49 RxP P-B6 53 P-N4 K-Q5

If 53...R-B6 54 P-R5!

54 K-N3 K-K6 56 RxP+ KxR
55 K-B4 K-K7

Can White hold this book position?

57 P-N5 K-K6 61 K-B7 K-B4
58 K-B5 R-B4+ 62 P-N7 R-B2+
59 K-B6 K-Q5 63 K-B8 K-B3
60 P-N6 R-B3+ 64 P-N8(N)+ Draw.

Orlando Chess Club

BY LARRY STORCH

The Orlando Chess Club, located in the heart of the city, is one of the most active clubs in the state. We meet three times a week for five hours or more per meeting night, and have a membership of from fifty to seventy-five members.

The mainstay of the club, of course, is the five minute game, but we are constantly running USCF rated round robins where members can get rated and play for cash prizes for a nominal fee of five dollars per event. These events proceed at the convenient pace of one game per week, and the events last from three to fifteen weeks. This November we will hold our annual Challengers tournament- the winner of this event will participate in the club championship match against fifteen year old Miles Ardaman. Miles, who took over the top spot this year, has had a phenomenal year. He tied for first in Gainesville in February, and placed 2nd-8th in the strong Jacksonville Classic. Miles also participated in the National High School Tournament in Philadelphia this year, where he finished in the top ten and chalked up an impressive victory over Michael Wilder (2351).

Club Treasurer Tony Ristorcelli has coordinated a series of lectures/lessons which are becoming very popular.

David Kaufmann and myself have combined on the OCC Bulletin - a publication full of stories, games and anecdotes.

We have some very promising young players. Along with Miles, John Concini and Dave Woden should be forces to reckon with in the near future.

FLORIDA STATE CHAMPIONSHIP

(W) John Concini (B) (H) Schoomaker (C); PIRC DEFENSE 1 P-K4 P-Q3 2 P-Q4 N-KB3 3 N-QB3 P-KN3 4 B-K2 B-N2 5 B-K3 O-O 6 P-KR3 P-K4?!

6...P-B4 is better as Black's Bishop gets hemmed in now.

7 PxP PxP 8 N-B3 Q-K2 9 B-QB4 N-B3 10 Q-K2 N-QR4?!

Black should complete his development by 10...B-K3 first, contesting his Q4 square.

11 O-O-O P-B3 12 P-R3 NxB 13 QxN B-K3 14 B-B5 Q-B2 15 Q-K2 KR-Q1 16 N-KN5 (16 K-N1 first avoids the pin) 16...B-R3 17 B-K3 B-Q2 18 R-Q2 P-N4 19 KR-Q1 P-R4 20 Q-B3! (Pressure builds on Black's Kingside.) 20...K-N2?? 21 R-Q6! BxN 22 BxB N-K1 23 BxR RxB 24 R/6-Q3 P-N5 25 N-N1? (25 N-R4 is active) 25...P-QB4 26 P-B4 PxP e.p. 27 NxP Q-N2 28 Q-K3 R-N1 29 R/1-Q2 B-N4 30 NxB QxN 31 R-B2 P-B5 32 R-Q5 Q-R3 33 Q-QB3 N-B2? 34 QxP+ 1-0.

Pawns Hard to Stop in New York

by Bill Goichberg

ENGLISH OPENING NEW YORK AUGUST OPEN

(W) Mikhail Zlotnikov (2400)

(B) Alonso Zapata (2373)

Notes by Zapata

1 c4 g6 6 Nge2! e5
2 Nc3 Bg7 7 O-O Nbd7
3 g3 Nf6 8 d3! Ne8
4 Bg2 O-O 9 Re3 f5
5 e4 d6 10 f4 c6

To control central squares.

11 Qd2 Ndf6 13 h3 Be6
12 ef gf 14 b3 Kh8

To prepare Rg8.

15 d4 e4 18 Rcl Rg8
16 d5 Bd7 19 Qel?! h5
17 dc bc

Better is 19 b4.

20 Qf2 Bh6 23 a4 Rb8
21 Rfd1 Rg6 24 c5?!
22 b4 a6

Better is 24 Rb1 & b5.

24 ... Rb4 28 Rb1 Nd6
25 cd h4 29 Bd4+ Kh7
26 gh Nh5 30 Nd1 ...
27 Rb1 R:b1

30 Be5!

30 ... Bg7 36 Nd4 Qf2
31 Bg7 Rg7 37 Kf2 Nf4
32 Ne3 Qa5: 38 Bf1 Nd5
33 Rdl Rg6 39 Ba6 f4
34 Nc4 Qa4 40 Nc4 e3+
35 Nb2 Qc2 41 Resigns

CLOSED SICILIAN MANHATTAN OPEN

September 1979

(W) Vadim Genfan (2094)

(B) Anatol Verkhovsky (2240)

Notes by Genfan

1 e4 c5 6 Be3 Nd4?!
2 Nc3 Nc6 7 N(1)e2 Ne2
3 g3 g6 8 Ne2 Bb2
4 Bg2 Bg7 9 Rb1 Bg7
5 d3 Rb8?! 10 Bc5 Qa5?!

Better is 10...d6.

11 Bb4 Qc7 17 Kh1 Be6
12 O-O d6 18 d5 Bd7
13 d4 Nf6 19 f4 gf
14 Nf4 g5 20 gf Rbc8
15 Nd3 O-O 21 e5 Nh7
16 Qd2 h6 22 Be4 f5

If 22...Qc2 23 Qc2 Rc2 24 ed ed 25 Ne5.

23 Bf3 Qc2 28 Be5 Rd2
24 Qc2 Rc2 29 Nb4 a5
25 ed ed 30 Nc6 Bc6
26 Bd6 Rfc8 31 dc 1-0
27 Rb7 Nf6

VAJANJAN OPENING MANHATTAN OPEN

(W) Lev Albur (2515)

(B) Joel Benjamin (2353)

Notes by Albur

1 d4 Nf6 7 h4 Nc6!
2 Bg5 g6 8 h5 Ne7
3 Bf6 ef 9 hg hg
4 e3 Bg7 10 c4 dc
5 Ne2 d5 11 Bc4 Bf5
6 Nf4 O-O 12 Nc3 c5!

Active counterplay is necessary.

13 e4 cd

If Qd4 the ending is better for White.

14 ef Nf5?!

Better is Qc7?!

15 Ncd5 Re8+ 19 Ng6+ Kd6
16 Kf1 Kf8 20 Qf3 Qc8
17 Ng6 fg 21 Qd5 Kc7
18 Nf4 Ke7 22 Bd3 1-0

Atlantic Open by Tim Brookshire

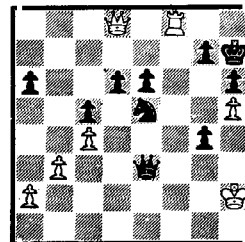
ENGLISH OPENING

August 19, 1979

(W) Lev Albur (2515)

(B) Spragett (2450)

1 c4 Nf6 2 Nc3 c5 3 Nf3 e6 4 g3
b6 5 e4 Bb7 6 Qe2 Nc6 7 Bg2 d6 8
O-O Be7 9 b3 O-O 10 Bb2 Nd7 11
Rad1 Bf6 12 d3 a6 13 h4 Rb8 14 Nh2
Ba8 15 Ng4 Bd4 16 Kh2 Nf6 17 Ne3
b5 18 Qd2 Be3 19 fe3 Ne5 20 Kg1 bc
21 dc Qc7 22 Na4 Rfd8 23 Bc3 Ne4
24 Be4 Be4 25 Ba5 Qc6 26 Bd8 Rd8
27 Qa5 Rb8 28 Nc3 Bd3 29 Rf4 f5 30
Qa4 Qb7 31 Qa3 h6 32 h5 Kh8 33 Qc1
Qf7 34 g4 Qe7 35 Qd2 fg 36 Kg2 Qg5
37 Rh1 Rd8 38 Qf2 Bf5 39 Ne4 Qe7
40 Qh4 Be4+ 41 Re4 Qb7! 42 Qd8+
Kh7 43 Rf1 Qe4+ 44 Kh2 Qe3 45 Rf8



Threatens mate on the move, but leaves the White King unprotected.

45...Qh3+ 46 Kg1 Nf3+ 47 Kf2 Qh2+
48 Kf1 Qg1+ 49 Ke2 Qe1+ 50 Kd3
Qd2+ White Resigns. If 51 Ke4 Qd4#

KING'S INDIAN DEFENSE

(W) Quinteros (2514)

(B) Rhode (2426)

1 Nf3 Nf6 2 c4 g6 3 Nc3 Bg7 4 e4
d6 5 d4 O-O 6 Be2 e5 7 O-O Nc6 8
d5 Ne7 9 Ne1 Nd7 10 Nd3 f5 11 Bd2
Nf6 12 f3 f4 13 c5 g5 14 cd cd 15
Nf2 Ng6 16 a4 Rf7 17 Nb5 h5 18 h3
Bf8 19 Qc2 g4 20 fg hg 21 hg Nh7
22 Rcl Qh4 23 Nh3 Bg3 24 Be1 Oh5
25 Bg4 Qh4 26 Qdl Qd1 27 Rd1 a6 28
Na3 Rc8 29 Bf2 Bh6 30 Rcl Rfc7 31
Rc7 Rc7 32 Rel Nf6 33 Kf1 Ng4 34
Ke2 Nf8 35 Bgl Nd7 36 Kd3 Ne3 37
Be3 fe 38 b4 Nf6 39 Rf1 Nh5 40 Nc4
Ng3 41 Rel Ne4 42 Ne3 Nc3 43 Nc4
Nd5 44 Nd6 Nb4+ 45 Ke4 Bf8 46 Rd1
Na2 47 Ke5 Nc3 48 Rd3 Na4 49 Nf5
Rc5+ 50 Kf4 Rc4+ 51 Kg5 Nc5 52 Rd5
Ne4+ 53 Kg6 Rc6+ and White Resigns

OPEN RUY LOPEZ

(W) Garcia (2368) (B) Blocker 2401

1 e4 e5 2 Nf3 Nc6 3 Bb5 Nf6 4 O-O
Ne4 5 d4 Be7 6 Rel Nd6 7 de5 Nb5 8
a4 d6 9 ba Ne5 10 Ne5 de 11 Qd8+
Kd8 12 Re5 Bd6 13 Rg5 Re8 14 Be3
Be5 15 b6 cb 16 Bb6+ Kd7 17 Be3 Bb2
18 Ra4 Bf6 19 Rd5+ Kc6 20 Rc5+ Kd6
21 Rac4 Be6 22 Bf4+ Ke7 23 Ra4 Kf8
24 h3 Bd7 25 Bd6+ Kg8 26 Rb4 Re8+
27 Kh2 Rd8 White Resigns.

The Arkansas Championship by Craig Kozel and Donny Gray

The Arkansas Championship held over Labor Day weekend was won by Michael Wierzbicki, a 2082 player from Indiana. Tied for 2nd place were Donny Gray, Robert Labare, Charles Davis, and Mike West, all with a score of 4-1. Mike Clingan won the D prize and also took the upset trophy for his win against Gray. Conrado Mapili won the Unrated prize. In three tournaments Conrado has been defeated only twice!

LITTLE ROCK OPEN

May 26, 1979

SICILIAN DEFENSE

(W) Andy Secuban (unr)

(B) Brent Standridge (1120)

Notes by Bill Wilwers

1 P-K4 P-QB4 3 B-K2
2 N-KB3 N-QB3

3 B-K2 is solid but tame.

3 ... P-K3 7 R-K1 P-KN3
4 P-B3 P-Q4 8 P-Q4 PxP
5 PxP PxP= 9 NxP? ...
6 0-0 KN-K2

Better is PxP.

10 NxN?

Merely reinforces Black's center. Black has an advantage.

10 ... PxN 12 B-Q3! ...
11 B-KN5 0-0

Good, White uses the threat of winning the Knight to bring his Bishop to a more active position.

12 ... R-K1 14 B-B6 BxB
13 Q-B3 P-KR3

14...Q-B2! to retain the Bishop & negate the pin, is better.

15 QxB N-B4 17 N-Q2 K-N2
16 QxQ RxQ 18 N-B3 ...

Perhaps 18. BxN BxB 19 R-K7 to establish a Rook on the 7th, although after 19...B-K3 White may have been concerned for the Rook's safety.

18 ... K-B3 19 P-KN4?

Better is N-K5.

19 ... N-Q3 22 P-N3 P-QR4
20 P-KR3 B-K3 23 N-Q2 KR-QN1
21 R-K3 P-B4

Black is effectively preparing a Q-side attack.

24 R-B3+ ...

The Rook is not at its best place here.

24 ... K-N2 25 R-K1? ...

See previous note.

25 ... P-R5 29 N-B1 R-R8
26 B-B2 PxP 30 RxR RxR
27 PxP R-R7 31 R-K3 R-B8
28 R-QB1 R/1-QR

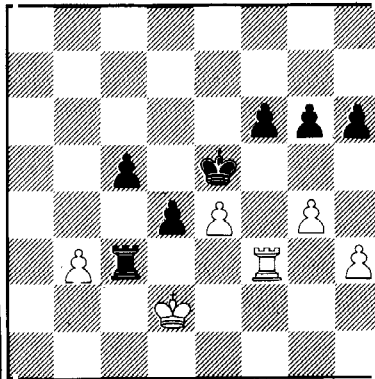
Leading to the win of a pawn.

32 R-K2 N-N4 33 K-N2 NxP

34 R-Q2 P-Q5

White is cramped, and a pawn down. The end is near.

35 N-N3 B-Q4+ 42 K-B2 K-K4
36 P-B3 K-B3 43 K-K2 R-QB8
37 R-B2 N-Q8 44 K-Q2 R-KR8
38 BxN RxB 45 K-Q3 R-QB8
39 N-K4+ BxN 46 K-Q2 R-B6
40 PxR dis+K-K3



47 RxR ...

Fatal, but there is no hope left.

47 ... PxR+ 51 KxP P-B5
48 KxP KxP 52 P-N4 P-B6
49 K-B4 P-B4 53 P-N5 P-B7
50 PxP PxP 54 Resigns

ARKANSAS CHAMPIONSHIP

STONEWALL

(W) Mike Clingan (1305)

(B) Donny Gray (1996)

1 P-Q4!

For the first time in two years of tournament play.

1 ... P-Q4 4 QN-Q2 P-QB4
2 P-K3 N-KB3 5 P-QB3 ...
3 B-Q3 P-K3

Strengthening the hold on Q4 and giving the KB retreating squares with more aggressive potential.

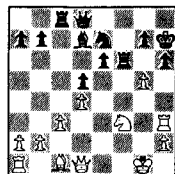
6 P-KB4 B-Q2 9 0-0 0-0
7 KN-B3 R-B1 10 R-B3 ...
8 N-K5 B-Q3

10 P-KN4 would be more aggressive.

10 ... PxP 13 P-KN4 BxN
11 KPXP P-KR3 14 BPxB ...
12 R-R3 N-K2

Freeing White's bad Bishop.

14 ... N-R2 17 PxP RxP
15 BxN+ KxB 18 P-N5 ...
16 N-B3 P-KB3



18 ... R-B1

Not R-B2, 19 PxP PxP 20 N-N5+

19 PxP P-N3 21 Q-K1 N-B3
20 N-N5+ K-R1 22 P-QN4 P-K4

23 R-N3 P-K5 27 Q-B3? KR-QB1
24 P-B4? B-B4 28 B-B4 NxP??
25 PxP? QxP 29 BxR RxR
26 Q-Q2 QR-B2 30 QxR ...

Threatening mate in one.

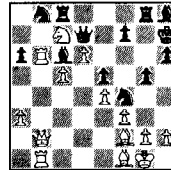
30 ... N-K7+ 32 RxP! Q-N1!
31 K-B2 P-K6+ 33 R-K8! 1-0

Mike West demolishes a "Hedgehog" type defense by sacrificing a Knight for two Q-side pawns. The activity of White's pieces gives Black no time to find a defense.

ARKANSAS CHAMPIONSHIP

Mike West 1418 Gary Weeks 1674

1 P-K4 P-KN3 18 P-B3 N-N3
2 P-Q4 B-N2 19 B-B2 B-R1
3 P-QB4 P-Q3 20 PxP NPxP
4 N-QB3 N-KB3 21 NxRP! PxN
5 N-B3 0-0 22 P-Q6 Q-Q2
6 B-K2 N/1-Q2 23 BxP P-R3
7 0-0 P-K4 24 N-R4 QR-Q1
8 B-N5 P-KR3 25 QR-N B-B3
9 B-R4 P-B3 26 N-N6 Q-R2
10 Q-B2 P-N3 27 B-B2 N-B5
11 KR-Q Q-K2 28 B-B N-Q2
12 P-QR3 B-N2 29 N-Q5 Q-R
13 P-QN4 P-B4 30 N-B7 Q-B
14 P-Q5 K-R2 31 P-B5 N-N
15 N-K P-KN4 32 R-N6 Q-Q2
16 B-N3 R-KN8 33 KR-N R-QB
17 N-Q3 N-B 34 Q-N2



Black is being strangled on the Q-side.

35 NxRP NxN 43 P-R3 R-R8+
36 BxN R-R 44 K-R2 R-QB8
37 B-N7 BxB 45 P-Q7 K-N3
38 RxR Q-B3 46 R-N6 K-B2
39 RxP+ R-N2 47 RxN B-B3
40 RxR+ BxR 48 RxR+ K-K2
41 Q-N7 QxQ 49 R-Q6 K-Q
42 RxQ RxP 50 P-B6 Resigns

ALEKHINE'S DEFENSE

Donny Gray 1996 Roger Martin 1936

1 P-K4 N-KB3 5 B-K2 P-K3
2 P-K5 N-Q4 6 0-0 B-K2
3 P-Q4 P-Q3 7 P-B4 N-N3
4 N-KB3 B-N5 8 P-QN3 QN-Q2?

Better is 8...N-B3

9 B-N2 P-QB4 12 NxP BxB
10 QN-Q2 BPxP 13 QxB 0-0
11 KPXP BxP 14 NxP! ...

If 14...PxN 15 QxP+ K-R 16 QxB, or if 14...R-K 15 Q-N4! with either mate or the loss of Black's Queen.

14 ... BxP+

The only way for Black not to lose material. However, White is better

15 KxB Q-R5+ 17 N-B3 Q-N5
16 K-N R-K

If 17 ...Q-R3 18 BxP QxB 19 NxQ RxQ 20 N-B5.

18 N/3-Q4 QxQ 19 NxQ RxN

20 N-Q4 R-K5 27 P-KN4 P-QR4
21 P-B3 R-K6 28 R-Q1 P-R4
22 N-B5 R-K7 29 R/2-Q2 PxP
23 BxP R/1-K 30 PxP R-K5
24 R-B2 R/7-K3 31 K-B2 RxNP?
25 B-Q4 N-K4 32 N-R6+ 1-0

FRENCH DEFENSE

(W) Bill Wilwers 1860

(B) David McPherson 1470

1 P-K4 P-K3 10 N-B3 P-QR3
2 P-Q4 P-Q4 11 N-QR4 Q-B2
3 P-K5 P-QB4 12 R-B1 N-N3
4 P-QB3 N-QB3 13 B-K3 B-K2
5 N-B3 Q-B2 14 N-B5 BxN
6 B-KB4 KN-K2 15 RxR 0-0
7 B-Q3 PxP 16 N-N5 P-R3
8 PxP B-Q2 17 N-R3 ...
9 0-0 Q-N3

Passive. The correct move is 17 NxBP! then if 17...RxN 18 BxN. If 17...N-Q2 18 NxRP PxN 19 Q-N4 ch K-B2 20 Q-R5+ K-N 21 BxRP. If 17...N(N)xP 18 NxN.

17 ... B-K1 21 P-B5 PxP
18 Q-Q2 P-B3 22 N-B4 B-B2
19 PxP RxP 23 RxP? R-Q3?
20 P-B4 N-R1

23...P-KN4!!

24 RxP NxP 26 Q-KB2 R/1-Q
25 BxN RxR 27 N-K6! 1-0

If 27...BxN 28 R-BB+ RxR 29 QxR#

Notes by Donny Gray.

QUEEN PAWN GAME

(W) David McPherson 1470

(B) Donny Gray 1996

1 P-Q4 P-Q4 11 P-K4 R-Q1
2 N-KB3 N-KB3 12 PxP NxP
3 P-K3? B-N5 13 N-K4 B-QN3
4 QN-Q2 P-K3 14 Q-K2 0-0
5 B-Q3 P-B4 15 K-R1 N-K4
6 P-B3 P-B4 16 B-B2 NxN
7 0-0 B-Q3 17 PxN N-B5
8 R-K1 Q-B2 18 BxN QxB
9 P-KR3 B-R4 19 Q-B1 BxP+
10 PxP BxP 20 K-N1 P-B4!

Resigns--No matter where the White Knight goes it is mate in a few moves. If 21 N-N3 QxN+ 22 Q-N2 QxQ# or 21 N-Q2 Q-N6+ 22 Q-N2 QxQ#.

SICILIAN DEFENSE

DRAGON VARIATION

(W) Craig Kozel 1448

(B) Bill Peak 1810

1 P-K4 P-QB4 6 B-K3 N-B3
2 N-KB3 N-QB3 7 P-B3 0-0
3 P-Q4 PxP 8 B-QB4 QN-R4
4 NxP P-KN3 9 B-N3 NxB
5 N-QB3 B-N2 10 NxN P-QN3

This is to passive against the K-side pawn storm white is planning. P-QR3 is more fluid.

11 Q-Q2 B-N2 15 P-N4 Q-B2
12 0-0-0 P-Q3 16 N-Q4 Q-B5
13 B-R6 R-QB1 17 P-KR4 P-QR3
14 BxB KxB 18 P-R5 R-B4

18...P-QN4 19 PxP BPxP 20 Q-R6+ K-B2 21 P-N5 N-Q2 22 QxRP+ K-K 23 QxP+ K-Q 24 N-K6!+.

19 PxP BPxP 21 P-N5 N-R4
20 Q-R6+ K-N1 22 RxN! 1-0

If PxR 23 P-N6 wins easily e.g. 24 QxP+ K-R 25 Q-R6+ K-N 26 R-N+ K-B2 27 Q-N6 mate.

West Virginia Championship

This year's tournament was won by Paul Harless (1985) and Donald Griffith (1902).

As a part of the Charleston Regatta this year the tournament was a success. Held at the Central Charleston Community Center and directed by Carl Kiser, nothing could go wrong.

Of the 53 player field the tournament boasted 10 previous champs. Of these J. Roush and G. Cummings were the 1978 co-champs, R Bukovac, and B. Haynes were the 1979 High School Champs., also P. Harless and D. Griffith had been state champions. Ratings ranged from 1985 to 256 and unrated.

ROUND 1

Only one surprise, but what a surprise. Anderson played well and really earned this point.

FRENCH DEFENSE

(by transposition)

(W) John Roush 1852

(B) Charles R. Anderson 1201 est!

1 P-K4	P-QB4	3 P-Q4	P-K3
2 N-KB3	N-QB3	4 P-QB3	...

This move is much more popular today than even 5 years ago. Though White has a pawn center he gives Black something to attack, he may block in his own pieces, or create difficulties for himself in developing completely.

4 ...	P-Q4	5 P-K5	...
-------	------	--------	-----

Now as a French Defense, Advance Variation, the game is in John's opinion better for White.

5 ...	P-QB5
-------	-------

Usually Black plays Q-N3 and if he intends P-B5 he waits for White to play B-Q3 first.

6 B-K2	B-Q2	8 P-QR3	...
7 B-KB4	P-QN4		

When I am faced with this, deferred Q-side attack I try to avoid loss of time; though it appears natural to try and stop the pawn avalanche, it is more effective to leave as many lines as possible closed. In a game versus D. Maples last year I sacked a pawn to block a continued Q-side action, then I continued the K-attack at his King (It worked.).

8 ...	N-KR3
-------	-------

Questionable as the Knight has nowhere to go. If he wants to move the Knight N-K2, B1, N3 is the only reasonable maneuver. Though time consuming.

9 BxN	PxB	11 N-R4	P-QR4
10 P-KN3	QR-N		

The natural continuation of Q-side expansion.

12 B-R5	KR-N	17 QxRP	KR-B
13 P-KB4	B-K2	18 Q-B2	N-R4
14 N-N2	P-N5	19 N-Q2	N-N6
15 RPxP	PxP	20 NxN	NPxP
16 Q-B2	Q-N3		

Excellent, this cracks the nut wide open.

21 N-B5 ...

Otherwise, it gets taken.

21 ...	PxP	24 PxB	QxP+
22 QR-N	Q-R4+	25 K-B	B-N4
23 K-B2	BxN		

The question is, What did Roush do or not do to deserve this?

26 RxB	P-B6+	30 N-Q3	P-B7
27 RxR	RxR	31 K-N2	P-B8(Q)+
28 N-K1	R-N7	32 K-R3	QxR
29 Q-R4+	K-K2	33 K-N4	R-N+ 0-1

ROUND 2

Now 11 of 53 have two points. There were no big upsets, but several nice games. Here Charles Jones shows "stuff":

VIENNA GAME

(W) Charles Jones (1234)

(B) Sam Swanson (781)

1 e4	e5	5 Nf3	Bxc3+
2 Nc3	Nf6	6 bxc3	d6
3 Bc4	Nc6	7 0-0	Bg4?

Better is 0-0, waiting, developing.

8 h3	Bd7	9 Re1	...
------	-----	-------	-----

Also possible is 9 Ng5 0-0 10 f4 e:f4 (11 R:f4 Ne5 12 Bb3 h6:?)

9 ...	0-0	14 Qd2	N:b3
10 Bg5	h6	15 a:b3	a6
11 Bh4	Na5	16 Re3	c6
12 Bh3	Qe7	17 Ra5	Rc8?
13 d4	Rad8		

Completely overlooking the threat.

18 d:e5	d:e5	20 Nd4	Rcd8
19 R:e5	Be6	21 Rg3!	...

Great, if 21...c5 22 Qh6 wins.

21 ...	Kh7	22 Qf4	...
--------	-----	--------	-----

Now the threat is 23 Nf5, and it is too late to stop it.

22 ...	c5	25 R:g7+	Kh8
23 Nf5	Rd1+	26 Q:h6+	Nh7
24 Kh2	Qd7	27 Q:h7mate	

Notice that the tactics here were allowed to White because of his superior forces on the K-side, and because they coordinated. This is better than attacking with less forces than your opponent has (unless he has some weak points you can capitalize on i.e. overworked piece, exposed K, etc.).

ROUND 3

Now only 3 of 53 players have perfect scores, however the highest any of them finish is 8th!?

The following game shows that D. Griffith can play exciting chess

CENTER COUNTER GAME

Donald Griffith 1902

Tracy Perkins 1279

1 P-K4	P-Q4	3 N-QB3	Q-QR4
2 PxP	QxP		

3...Q-Q1 is the other alternative.

4 P-Q4	N-KB3	7 QxB	P-QB3
5 N-B3	B-KN5	8 B-Q3	P-K3

9 0-0 B-Q3

9...B-K2 "looks" better.

10 B-K3	0-0	11 N-K4	B-K2
---------	-----	---------	------

Why not 11...NxN 12 QxN P-KN3?

12 B-N5	QN-Q2	14 B-KB4	...
13 NxN+	NxN		

Typical maneuvering here, it avoids simplification.

14 ...	QR-Q	16 Q-N3	Q-Q2
15 B-K5	Q-Q4	17 QR-K	B-Q3

Maybe P-KN3 is safest if 18 Q-R4 N-R4 19 Q-B3 P-QB4 or if 18 Q-N5 N-R4 19 Q-R6 B-B3 20 P-KN4 B-N2 21 Q-K3 N-B3 22 P-QB4 N-K or P-QB4

18 P-B4	P-QB4?
---------	--------

A blunder which loses immediately.

19 BxN	Resigns
--------	---------

ROUND 4

Now 1 of 53 players has 4 points with 2 rounds to go.

This is an example of a straight forward strategy (whether planned or not) and some tactics, all played consistently by Black.

CENTER COUNTER

(W) Bobby Justice (782)

(B) Glenn Harshberger (1204)

1 P-K4	P-Q4	3 N-QB3	...
2 PxP	N-KB3		

More usual is 3 P-Q4

3 ...	NxP	7 QPxQ	B-B4
4 NxN	QxN	8 B-Q3	BxB
5 Q-B3	Q-K4+	9 PxR	P-KN3!
6 Q-K3	QxQ+		

Very good idea, White flubs the defense.

10 N-KB3	B-N2	12 0-0	...
11 B-Q2	N-QB3		

12 K-K2 should be considered.

12 ...	0-0-0	13 P-Q4	...
--------	-------	---------	-----

R-QN1 is safe if the King was on K2.

13 ...	P-K4	15 N-Q4	N-B3
14 PxP	NxP		

Now White should pray forgiveness for playing 1 P-K4.

16 NxN	RxB	19 KR-Q	R/1-Q
17 NxP+	K-N	20 RxR	...
18 N-N5	BxP		

Now is the perfect time to play 20 N-Q4 if RxR 21 RxR P-QB4 22 N-B6+ wins if 21 BxN 22 RxB.

20 ...	RxR	21 R-K1	
--------	-----	---------	--

Now there are no defenses left for White.

21 ...	P-QB3	28 RxP	K-N3
22 N-Q4	BxN	29 K-B	K-N4
23 PxR	RxP/5	30 R-R2	K-N5
24 P-KN3	K-B2	31 K-K1	P-QB4
25 R-K7+	R-Q2	32 R-Q2	RxR
26 R-K4	P-QN4	33 KxR	K-N6
27 P-QR4	PxP	34 K-B	K-B6

35 P-N4	P-N4	38 K-Q	K-N7
36 P-B3	P-B3	39 Resigns	
37 P-R3	P-R3		

KING'S INDIAN DEFENSE

(W) Tracy Perkins 1279

(B) Robert Bukovac 1671

1 c4	Nf6	4 e4	d6
2 Nc3	g6	5 f3	0-0
3 d4	Bg7	6 Be3	...

Moves 5 & 6 start the Samisch Variation usually (The reason Fischer gave up the K.I.Def. against some opponents.)

6 ...	e5	8 Rc1	...
7 d5	c6		

8 Bd3 look good, then if later 0-0 the K-Rook can go to C1 and the Q-Rook on A or B1.

8 ...	c:d5	9 N:d5	...
-------	------	--------	-----

Now some of Black's problems ease with f5 coming early. Also ...Qa5+!

9 ...	N:d5	11 Bd3	f:e4
10 c:d5	f5	12 f:e4	Qh4+

Now White is in serious trouble. Watch as Black picks him apart.

13 g3	Qf6	15 Qc1	B:e3
14 Rc7	Bh6	16 Q:e3	Na6

Looks odd, but makes sense.

17 B:a6	b:a6	19 b3	Rb4
18 Ne2	Rb8	20 Qh6?	...

Suicide! How about 20 Rc4 R:c4 21 b:c4 Bh3 22 Rg1 Qd8? or 20 Nc3 Rd4 21 R:h7 (21 Ne2 Qf1 wins) Bg4 (with the idea of Rd3).

20 ...	Qf2+	23 Kc1	Qa1+
21 Kd1	Rd4+	24 Kd2	Rf2+
22 N:d4	Q:d4+	25 Ke3	Qd4#

ROUND 5

At this point Harless, Griffith, and Funkerhouser are tied. Here are several fun games.

SICILIAN DEFENSE

NAJDORF VARIATION

(W) Mark Hathaway 1807

(B) Wietold Sieradzan 1258

1 e4	c5	4 N:d4	Nf6
2 Nf3	d6	5 Nc3	a6
3 d4	c:d4	6 f4	b5?

I missed the obvious 7 e5 winning a pawn. He should have played Qc7 or e5.

7 Bd3	Bb7	10 Kh1	Nbd7
8 Qe2	e6	11 e5	d:e5??
9 0-0	Be7		

Safe is Nd5 (for a while).

12 f:e5	Nd5	13 N:e6	...
---------	-----	---------	-----

Chess is fun again.

13 ...	N:d3	15 Ne6+	Ke8
14 N:g7+	Kf8		

If 15...Kg8 16 Qg4+ wins.

16 Qh5	Ne5	17 N:d8	Resign
--------	-----	---------	--------

MODERN DEFENSE

(W) Bob Bukovac 1671
(B) Charles Szasz 1827

1 e4 g6 4 Bc4 Nf6
2 d4 Bg7 5 Nc3 0-0
3 Nf3 d6 6 0-0 N:e4

A common theme for simplifying, though not often used in the Pirc. White should have played 7 B:f7+ - JEM.

7 N:e4 d5 13 Qe2 Na6
8 Bd3 d:e4 14 Ng5 Bd7
9 B:e4 c5 15 Rfd1 Rad8
10 d:c5 Qc7 16 Bc2 N:c5
11 c3 a5 17 Qc4 ...
12 Be3 Be6

It's amazing how threats appear after this move.

17 ... b6 18 Qh4 h6

Black can hang this one up and go home.

19 Nf3 Bc6 20 Nd4 g5

The Black K-pawn is also threatened by 21 N:B/c6 Q:N/c6 22 Q:e7.

21 B:g5 h:g5 22 Qh7mate.
Truly Amazing!

ROUND 6

Harless beat Funkerhouser to clinch 1st (his first win over Funkhouser) and Griffith beats Barker in a brutally fast Ruy Lopez.

SICILIAN DEFENSE

(W) Dennis Funkerhouser (1958)
(B) Paul Harless (1985)

1 e4 c5 3 c3 ...
2 Nf3 Nc6

The attempt is to get an imposing pawn center which would restrict Black's pieces.

3 ... d5

Also played is Nf6 with the idea of provoking e5 by White then to attack the fixed pawns.

4 e:d5 Q:d5 6 Be2 Nf6
5 d4 e6 7 0-0 c:d4

I prefer to wait as long as possible before doing this, because the White recapture c:d4 will let him play Nc3 instead of Nbd2.

8 c:d4 Be7 12 N:d5 e:d5
9 Nc3 Qd8 13 N:c6 b:c6
10 Be3 0-0 14 Qc2 ...
11 Ne5 Nd5

Now that the pawn structure has crystallized the maneuvering will reflect that.

14 ... Qb6 20 Rc5 Be7
15 a3 Ba6 21 Rc2 Bf6
16 Rac1 B:e2 22 Re1 Re4
17 Q:e2 Rfe8 23 Rc5 Qb7
18 Qd2 Rac8 24 Qc3 Rce8
19 Rfel Bf6 25 R:c6?? ...

It's curious that Dennis who is usually tactically aware takes this pawn. 25 g3 should relieve the Black counterthreat and so, give a slight ad to White. From here on the combination is forced.

25 ... B:d4 28 f:e3 Q:d2
26 Qd2 Q:b2 29 R:d2 Be3+
27 Rd1 R:e3 30 Resigns.

PUNKS VS FOSSILS August 21, 1979

These two games demonstrate the necessity of learning to defend as well as attack.

(W) Brent Haynes (B) A. Clancy
SICILIAN DEFENSE
NAJDORF VARIATION
RAUSER'S ATTACK

1 e4 c5; 2 Nf3 d6; 3 d4 c:d; 4 N:d4 N:f6 5 Nc3 a6 6 Bg5 e6 7 f4 Be7 8 Qf3 Qc7 9 0-0-0 0-0?
Too early, Black shouldn't let White know for sure that he is going to castle K-side.
10 g4 Bd7 11 h4 Nc6 12 Nb3 Rfc8 13 Rd3 Nb4 14 Kb1 h6
Bad defensively, Black should once again be flexible, the K-side pawns need to be ready to block the White advances, not to open lines.
15 B:h6!
As the saying goes "As natural as a baby's smile".
15 ...g:h6 16 g5 h:g5 17 h:g5 N:d3 18 g:f6 B:f6 19 Q:d3 B:c3 20 Rdg1+ Bg7 21 R:g7+ K:g7 22 Qg3+ Kf8 23 Rh8+ Ke7 24 Qg5+ l-0.

VERESON'S OPENING

(W) Philip Lewis
(B) Tracy Perkins

1 P-Q4 P-Q4 4 N-B3 P-K3
2 N-QB3 N-KB3 5 P-K4 ...
3 B-N5 N/1-Q2

Now it transposes into a French

5 ... PxP

Black chooses the Rubinstein-Burn Variation, passive but safe.

6 N:PxP B-K2 8 P-B3 0-0
7 N:K+N N:K+N 9 B-Q3 P-B4

Unsafe because of 10 BxN BxB 11 PxP or 10 BxN PxN 11 Q-B2. Black's K-side disintegrates very quickly

10 Q-B2 P-KR3 11 B-K3 ...

White's last chance to win the pawn or mess up Black's K-side.

11 ... PxP 12 BxP ...

The next few moves are very good for White, Black doesn't defend well.

12 ... P-QN3 17 P-KN4 N-Q4
13 0-0-0 B-N2 18 P-N5 N:PxP/5
14 N-K5 Q-B2 19 PxP BxN
15 KR-KN B-Q3 20 B-R7+ K-R
16 P-KB4 QR-QB 21 PxP+ Resign

Aside from the 10 & 11 move this was a well played attack.

SICILIAN DEFENSE

SNYDER VARIATION

(W) Dennis Funkerhouser (1958)
(B) Paul Harless (1985)

1 e4 c5 5 Nc3 e6
2 Nf3 Nc6 6 Bb5 Bd7
3 b3 d6 7 0-0 a6
4 Bb2 Nf6 8 B:c6 B:c6

This is a good Bishop, but it lost its effectiveness when White played e5.

9 d3 b5

9...Qc7 might keep the fight in the middle of the board. If 10 Re1 Rd8 so that 11 e5 is met with B:f3

12 e:d6 B:d6+. If 10 Re1 Rd8 11 d4 c:d4 12 N:d4 Be7 with better coordination for Black than in the game.

10 e5 d:e5 13 Qe2 0-0
11 N:e5 Bb7 14 Rad1 Qb6
12 Re1 Be7 15 Ne4 ...

Here and move 17-19 White is moving to the K-side where Black will find it hard to defend. Try yourself to find good defensive moves that coordinate well.

15 ... Rad8 17 Qg4 Kh8
16 N:f6 B:f6 18 Re3 Qc7

Hoping to slow White down.

19 Rdel g6 24 Rg3+ Kh7
20 Qf4 Kg7 25 Nc6 B:b2
21 Rh3 h5 26 Ne7 Rd4
22 Rle3 Qe7 27 Qg5 Resign
23 R:h5 g:h5

Mike McAlister

MODERN OPENING

(by transposition)

1 P-KB4 P-KN3 2 N-KB3 B-N2 3 P-K4 P-Q3 4 P-Q4 P-QB4 5 B-K3 If 5 P-Q5 and later P-QB4 White will have transposed into the four pawns Attack Vs Benoni.
5...B-N5 6 P-B3 Q-N3 7 Q-R4+ N-Q2 8 Q-N5
White's P-B3 was feared when first played, because it appeared White's pawns became invulnerable. Now it is known that they are targets, though safe, so it is OK.
8...Q-B2 9 N/1-Q2 P-QR3 10 Q-Q3 N/1-B3 11 B-K2 P-K4 12 B:PxP
I like the idea of 0-0 first leaving options open. Any capture by Black will be good for White.
12...P:KXP 13 P:KXP QNXP 14 N:KXN QxN 15 N-B4 BxB 16 N:QX BxQ 17 NxB P-N3 18 0-0-0 N:PxP
Reaping the fruits of White's 15th move.
19 KR-K 0-0 20 B-B4 KR-K 21 P-B4 P-QN4 22 B-K3 QR-B 23 B:PxP PxP!
A cheap tactical shot...One that anyone would do if he saw it. Or more correctly, simply justifying the soundness of his (Blacks) position.
24 N-B2 NxB White Resigns.

CHAMPIONS

Four times John Hurt has won the West Virginia Chess Championship. Only players who love the game play like John.

MEMPHIS CANDIDATES

FRENCH DEFENSE

STENIZ VARIATION

(W) John Hurt 1831
(B) G. Hood 1884

1 e4 e6 12 Bb2 Nb6
2 d4 d5 13 B:b5 a:b5
3 Nc3 Nf6 14 N:b5 Qd7
4 e5 Nfd7 15 Nd6+ Kf8
5 f4 c5 16 Ng5 Nd8
6 d:c5 Nc6 17 Qh5 Ba6
7 Nf3 Bc5 18 0-0-0 Nc4
8 a3 a6 19 N:c4 B:c4
9 Bd3 b5 20 N:h7+ Kg8
10 b4 Ba7 21 Nf6+ g:f6
11 Qe2 Qc7 22 Qg4+ Kf8



23 e:f6 Rg8 29 Qh6+ Ke8
24 Qh3 Rc8 30 R:e6+ f:e6
25 Rhel Qa4 31 f7+ K:f7
26 Kb1 Nc6 32 Qh7+ Kf6
27 f5! d4 33 Bc1 e5??

Two pieces up? Give one back 33...N:b4 with the threat of Qc2+

34 Rf1+ Ke6 35 Qf7+ Kd6 36 Rf6#

MODERN DEFENSE

TENNESSEE OPEN

Nashville, TN Sept. 79
(W) John Hurt 1831 Bill Layton 2066

1 e4 g6 2 d4 Bg7 3 Nc3 d6 4 Be3 a6 5 Be2 b5 6 a3 Bb7 7 h4 Nf6 8 Qd3 Nbd7 9 h5 c5 10 h:g6 h:g6 11 R:h8+ B:h8 12 Bf3 Qc7 13 Ne2 c:d4 14 B:d4 0-0-0 15 Qe3 e5 16 Ba7 d5 17 e:d5 e4 18 Ne4 N:d5 19 Qb3 Ne5 20 0-0-0 Nc4 21 Bd4 B:d4 22 R:d4 Nf4 23 R:d8+ Q:d8 24 N:f4 B:e4 25 Qc3 If 25 B:e4 Qd2+ & Q:f4 with the threat of Nd2+ wins.
25...B:f3 26 Q:f3 Qd2+ 27 Kbl Qel+ 28 Ka2 Nd2 29 Qc6+ Kb8 30 Qb6+ Kc8 31 Qa6+ Kb8 32 Qb5+ Kc8 33 Qc5+ Kb8 Draw.
White could have won with 34 Qb4+ Kc7 35 Qc3+ Kb8 36 a4!

EDITOR'S PAGE

As the new editor of the WV Chess bulletin I'd like to state the goals we shall attempt this year.

First and foremost to publish a quality bulletin. That means professional like work, tournament reports, annotated games, unannotated games, tournament announcements, a WVCA business meeting report, a top 25 rating list, an editors page (or letters to the editor), advertisements, a masthead & contents page (with pages numbered), and any other stories pertinent to West Virginia chess.

Secondly, to promote chess activities in West Virginia. Activities which range from club tournaments to special awards.

Because the list is long, it will require help from many people. The bulletin must have game scores and annotations, tournament crosstables, etc. to publish. The information must come from you the interested reader! Beginners and advanced alike must contribute for the bulletin to be representative of West Virginia chess. Tournament directors in particular have access to game scores and crosstables.

Something new: The last issue this year I would like to publish a list of all the clubs which meet regularly. To do this I need you to send me names, days, times, and places.

If you have any inquiries, comments, stories, games or miscellany; write to Mark S. Hathaway, 159 Sycamore St., Huntington, WV 25705.

A LETTER FROM THE PUBLISHER TO THE CHESSPLAYERS OF WV.

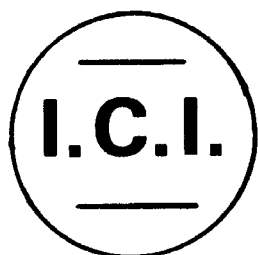
Welcome to The Chessman, your chess bulletin has been included with six others to make this magazine. Most of us delight in this opportunity to keep in touch with chessplayers in or out of the state. The magazine cost about the same as your bulletin, maybe less, \$.50 per magazine (includes postage). I could give you a list of advantages for The Chessman, others see weaknesses, but the real issue is do you like the magazine? If so it needs no other justification, if not it serves no purpose.

You should advise your officers accordingly.

I am sure I speak for all of us when I say we have enjoyed being with you, and wish you a Merry Christmas.

Earle Morrison

THANKSGIVING WEEKEND—NOV 24 AND 25



1979 ATLANTA OPEN

FIVE-ROUND SWISS

ACCELERATED PAIRINGS



GUARANTEED \$2000 PRIZE FUND

OVERALL		-A-	-B-	-C-	-D-	E/Unrated
1st	\$300*	\$200	\$200	\$200	\$200	\$200
2nd	\$200	\$100	\$100	\$100	\$100	
3rd	\$100					
*Plus Trophy						
* PLUS TROPHY TO TOP CHESS CLUB OF FIVE *						

PLAYING SITE: Marriott Hotel, 246 Perimeter Center Parkway N.E. I-285 at Ashford - Dunwoody Exit, Atlanta, Ga. 30346. H.R. \$28 single or double (normally \$48 and \$52.) Reserve early to be sure of room. Indoor Pool & Sauna.

ENTRY FEES: \$23.00 if received by November 17th; \$27.00 at site.

REGISTRATION: Ends 9:45 AM U.S.C.F. and G.C.A. membership required. Other states O.K.

TIME CONTROL: 30/100.

ROUNDS: 10-3-8, 10-3. ½ - point bye, if unable to play 1st round and requested with entry.

NO SMOKING.

PRE-ENTER and INFORMATION:

L. Thad Rogers, National T. D.
International Chess Imports
3055 General Lee Rd., Macon, Ga. 31204

TWO ATLANTA OPEN ONE-DAY QUADS
NOV. 24TH SATURDAY QUADS
NOV. 25TH SUNDAY QUADS

BOTH: 3-RR, TL 40/80 - EF: \$7. ST \$5. Trophy to first each section. Special sections for elementary and high school students. Reg. ends 10:00 AM.
Rounds: 10:15, 1:30, 5:00, Enter: I.C.I.
3055 General Lee Rd., Macon, Ga. 31204

PLAN TO PLAY --- THIS IS ALWAYS A GREAT TOURNAMENT

A COMPLICATED GAME

By Mike Decker & Paul Shields

Many times during a tournament game I have wished to be able to analyze a position postally--with ample time to work out all the complications by moving the pieces. This game demonstrates that some complications just can't be worked out. The game ended a year ago and I am still not satisfied with my analysis of the final position even though that analysis is far deeper than any I have accomplished over-the-board. My opponent was a FIDE senior master member of Austria's 1978 Olympiad team, and author of an important theoretical work on the Pelikan Sicilian.

SICILIAN DRAGON VARIATION

(W) Dr. Michael Decker (USA)

(B) Dr. Walter Wittmann (Austria)

1 e4 c5 4 N:d4 Nf6
2 Nf3 Nc6 5 Nc3 d6
3 d4 cd

Drat! No Pelikan, and I had some busts to his book.

6 f4

My usual, transpositional response to Black's move order. Black can now drift into a Dragon, a Scheveningen, or an irregular Sicilian.

6 ... g6 8 e5 Nd7
7 N:c6 bc

The complications after 8...de are probably untenable postally.

9 ed ed 12 0-0-0 Bf6
10 Be3 Be7 13 Bd4 0-0
11 Qf3 d5 14 g4 ...

An innovation. ECO and Levy give only the 14 h4 once tried by Tal. 14 h4 looks more direct--aiming at opening up the K-side by h5--but Black can prevent that further push with 14...Rb8 (threat 15...Bxd4 and 16...Qb6) 15 Qf2 Rb4 16 B:f6 N:f6 and White is left with a hole at g4 and little chance of getting in an effective h5. 14 g4 aims at a quick f5 or a delayed h4 and shortens the c8-h3 diagonal.

14 ... Rb8 15 B:f6 ...

Else 15...B:d4 16 R:d4, Qb6--

15 ... N:f6 18 Rg1 Qa3+
16 f5 Qb6 19 Kbl Rb4
17 b3 Qb4 (Threat Q:g4)

20 Bd3 d4 22 Bf1!? ...
21 Ne4 Nd5

White had to meet the mating threat of 22...Nc3+. 22 c4 opens up my King far too much. Black has such pleasant options as sacing a Rook on b3 or planting a pawn at least temporarily on c3. The more obvious 22 Be2 has the drawbacks of closing the second rank (preventing such manoeuvres as Rg2 and c4) and preventing Black from grabbing the a-pawn and setting off the following incalculable series of combinations.

22 ... Ra4 23 Qh3! Qxa2+

Looks obvious. The last chance to back out into a drawish ending

was 23...Nc3+ 24 N:c3 dc 25 Q:c3 Q:a2+ 26 Kcl Qa1+ 27 Q:a1 R:al+ 28 Kd2 Rd8+ 29 Bd3 R:d1+ 30 K:d1 (30 R:d1 gf etc.) Ba6 31 fg fg (or 31...B:d3 gf+) and equality.

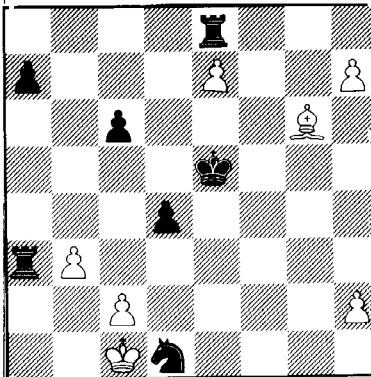
24 Kcl Ne3 25 Bd3 Ba6

Black had three other main lines to consider: ...f6, ...N:d1, ...Ra5:

A) 25...f6 26 fg hg 27 Qh6 and White wins quickly.

B) 25...N:d1 26 Qh6! (threats: 27 f6 or 27 Nf6+) f6 27 fg Qa3+ (!) 28 Kd2 Qe7 29 Q:h7+ Q:h7 30 gh+ K:h7 31 ba Nb2 or e3 32 Nf6+ and White is a pawn up in an ending.

C) 25...Ra5 and now: 1) 26 Nf6+ Kg7 27 g5 h5 28 gh+ Kh8 (28...K:f6 29 Qh4+ Ke5 30 Qe7+ Be6 (30...Kf4 31 Qe4 Mate) 31 fe Qa3+ 32 Q:a3 R:a3 33 e7! Re8 34 h7 N:d1? 35 R:g6!! fg 36 B:g6



Analysis after 25...Ra5 & 28...K:f6

But, after 28...Kh8 29 fg does not work--not because White's Queen hangs on h3 (it can't be taken) but because after 29...fg, White does not have 30 Qd7. Instead of 29 fg, White can try 29 R:g6 which works if Black takes the Rook but fails to 29...Qa1+ 30 Kd2 Q:d1 Mate. II) 26 Qh6! f6 (forced to stop both 27 Nf6+ and 27 f6) 27 fg Qa3+ 28 Kd2 Qe7 29 gh+ Kh8 (29...Q:h7 30 N:f6+) with an unclear position. But if you think that's complicated, wait a few more moves.

26 Nf6+ Kg7 28 gh+ep Kh8
27 g5 h5 (forced)

28...K:f6? leads to mate in four:
29 Qh4+ g5 30 Q:g5+ Ke5 31 Qe7+ Kd5
32 Be4 Mate or 31...Kf4 32 Qe4 Mate.

29 fg Resigns ?!

That I never suspected! True, Black faces mate in one, his Rook is hanging and White has a tremendous attack, but White's Rook is also hanging, Black has a tremendous attack and White is almost in a mating net himself.

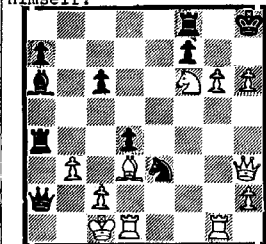
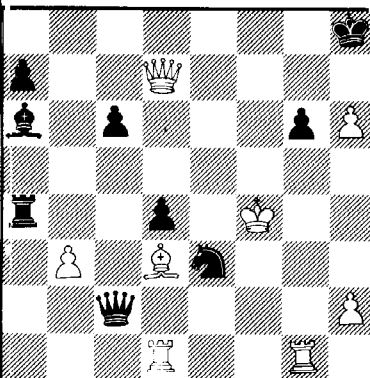


Diagram 2

I suspect that Wittmann failed to find either the 32nd or 34th moves given in the main variation below--certainly his game is not resignable, it may even be good!

29 fg fg 30 Qd7 and now the only way to prevent mate is to start playing for mate: 30...Qa1+ 31 Kd2 Qc3+ 32 Ke2 Q:c2+! 33 Kf3 (If 33 Rd2 then 33...Bd3+ 34 Kf3 or f2 R:f6+ 35 Kg3 Nf5+ and Black wins) 33...R:f6+ 34 Ke4 (not 34 Kg3? Qf2+ and Black mates) 34...Rf4+! (Although it seems plausible, Black should not try 34...B:d3+ 35 R:d3 Nf5 protecting against the mate on g7. White should then play 36 Qd8+ Kh2 37 Q:f6, after which it is doubtful whether Black can even draw. But the position is still complicated. E.g., after 37 Nd6+?!, White must play 38 Ke5! because 38 Qd6? loses! Black's best try seems to be 37...Qe2+, but I don't think it is good enough for a draw. Interesting things can happen, though, if White makes a mistake, e.g., 38 Kf4 Qf2+ 39 Rf3 Qd2+ 40 Ke5? Qa5+! 41 Kf4 d3+! 42 b:a4 Qb4+ and Black mates.)

But now, after 34...Rf4+!, White must play 35 K:f4 whereupon we reach the first of several critical positions.



Analysis after 35 K:f4 Black to move.

Now there are two oddly symmetrical variations, depending on whether or not Black captures the pawn on h2:

A) 35 ... Qf2+ 36 Ke4 ...

(White's salvation in this line is probably 36 Ke5 Ra5+ 37 Ke6 Qf8 38 Qg7+ Q:g7 39 hg+ K:g7 40 R:g6+ when White seems to have the better of a still complicated ending)

36 ... Qh4+ 37 Rg4! ...

Not 37 Ke5? Ra5+. Also 37 Kf3? Qf6+ 38 Ke4 N:d1! and the threats of ...Nf2 and ...Nc3 force White to trade down into a losing endgame. (Notice that in this line 38 Ke2 Ra2! also seems to win: e.g. 39 Qg7+ Q:g7 40 hg+ K:g7 41 Bb1 N:d1! 42 B:a2 Nc3 43 Rg2 Bf1 44 Rc2 or Rb2, d6!) White has no perpetual check because of his own pawn on h2.

37 ... Q:g4+ 40 K:d4 N:d3
38 Q:g4 N:g4 41 R:d3 B:d3
39 ba Nf2+ 42 K:d3 ...

SEE DIAGRAM AT THE RIGHT

After the mutual destruction only a draw remains. How often can one analyze a variation from Diagram 2 to such an ending?

B) 35 ... Q:h2+(!)

Probably best given the note to



Mike Decker

White's 36th in "A".

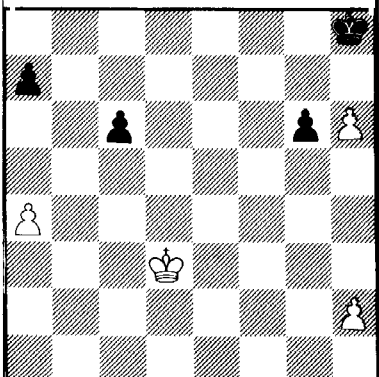
36 Ke4

The best. Other possibilities lose or transpose back into "A". E.g.: 1) 36 Kg5? Ra5+ and Black wins.

2) 36 Rg3? g5!+ 37 Kf3 (If 37 Kg5 or 37 Ke5 then 37...Q:g3 wins for Black. If 37 Ke4, then 37...Qh4+ 38 Kf3 (38 Rg4 Qg4+ transposes into "A" but without White's h-pawn, i.e. Black wins) 38...Qf4+ 39 Ke2 Ra2+ etc. also wins for Black) 37...Qh5+ 38 Ke4 (38 Rg4 Qh3+ only forces White back into variation "A" without the h-pawn, while 38 Kf2 loses to 38...Ra2+) 38...B:d3+! 39 R:d3 (forced), Qg6+ 40 Kf3 Qf6+ 41 Ke2 (or else Black mates on f4), Ra2+ 42 Rd2 Qf1 Mate.

3) 36 Kf3 Qh5+ forces White to transpose back into the main line with 37 Kg3 or 37 Ke4, since the only other possibilities lose:

- 37 Rg4? Q:g4! 38 Q:g4 N:g4 39 ba B:d3! and Black wins as neither piece can be captured
- 37 Kf4 Qh4+ 38 Rg4 (or else transposes into "A") Qf2+ 39 Ke4 (not 39 Ke5 or Kg5 allowing the Rook check) Qf5+! 40 Q:f5 gf+ 41 Kf4 fg 42 ba N:d1 43 B:a6 Ne3 and Black wins the endgame.



Pennsylvania State Championship

PENNSYLVANIA STATE CHAMPIONSHIP
Folsom, Pa. September 79
KING'S INDIAN DEFENSE
(W) Anatoly Dozorais (2300est)
(B) Greg Nolan (2036)

1 e4 c6 10 h3 Re8
2 c4 g6 11 Rb1 ed
3 Nc3 Bg7 12 N:d4 d5
4 d4 d6 13 ed R:e1
5 Nf3 Nf6 14 Q:e1 cd
6 Be2 O-O 15 Ndb5 d:c
7 O-O Nbd7 16 Bf4 Ra6
8 Re1 e5 17 B:c4 Nh5
9 Bf1 a5

Black is in trouble here, White's minor pieces dominate the board.

18 Bc7 Qf8 19 Rdl h6?

19...Nc5 with the idea of developing the QB seems better.

20 Nd6 Rc6
21 B:f7+!! ...

Turn out the lights

21 ... Kh8
22 B:g6 Nf4
23 Nf7+ Kg8
24 Bd6 R:d6
25 N:d6 Ne5
26 Be4 b6
27 N:c8 Q:c8
28 Nd5 N:d5
29 R:d5 Bf6
30 R:e5! Be5
31 Bd5+ Kf8
32 Q:e5 Resigns.

CARO-KANN
(W) Bruce Fortado
(B) Alvin Hamilton

1 P-K4 P-QB3
2 P-Q4 P-Q4
3 PXP PXP
4 B-Q3 N-QB3
5 P-QB3 N-B3
6 B-KB4 P-K3
7 N-B3 B-Q3
8 N-K5 Q-B2
9 Q-K2 N-Q2
10 B-QN5? ...

Moving the same piece twice in the opening is slow.

10 ... O-O
11 NxN(7)? ...

Helping Black develop.

11 ... BxN
12 BxB QxB 20 Q-B2 R-K2
13 O-O P-QR3 21 B-N3 R/1-K1
14 B-Q3 P-K4! 22 N-R3 R-K7
15 PXP NXP 23 Q-N3 N-K6
16 R-Q1 B-B3 24 Q-B3 RXP+
17 B-B2 Q-B3 25 K-R1 Q-R5
18 R-Q4 KR-K! 26 QxN & Resigns
19 P-KB4 N-B5

KING'S GAMBIT DECLINED
(W) Peter Palaitis (1410)
(B) Guy Borek (1337)

1 P-K4 P-K4 3 N-KB3 P-Q3
2 P-KB4 B-B4 4 B-B4? ...

Knights before Bishops, perhaps
4 N-B3 or 4 P-QB3.

4 ... B-KN5 9 PxN P-K5
5 N-QB3 N-QB3 10 P-Q4 PxN
6 N-Q5 KN-K2 11 PXP Q-R5+
7 P-QB3 NxN 12 K-Q2 B-B4

13 BxP+? ...

13 B-Q3 is a little sounder.

13 ... RxB 17 K-B1 B-R6+
14 PxB PXP/4 18 K-N1 R/1-K1
15 K-K2 R-K2+ 19 Resigns
16 B-K3 RxB+

NATIONAL H.S. CHAMPIONSHIP
(W) Bobby Fischer (741)
(B) Therman Rountree (1306)
Notes by the winner.

1 P-K4 P-K4 3 B-N5 N-Q5
2 N-KB3 N-QB3

I had never seen this before. Later I learned it was the Bird's Defense to the Ruy Lopez.

4 NxN PxN

13 ... N-K4 16 NxN B-QB5
14 N-Q2 O-O 17 B-Q2 ...
15 KR-K1 NxB

Certainly not 17 P-QB3.

17 ... R-K1+ 19 RXR B-QB4??
18 K-B1 RXR+?

Black had to play 19...B-B so that 20 R-K8 could be answered with 20 ...P-QN3 21 B-N4 B-N2.

20 R-K8+ B-B 21 B-N4! ...

Winning the Bishop.

21 ... P-KN3?

Better is P-KR3, but Black's game is hopeless.

22 BxB P-KR3 23 BxP+ K-R2

1 P-K4 P-QB3 9 B-N5+ N-B3
2 N-QB3 P-Q4 10 N-K5 KN-K2
3 PXP PXP 11 B-K3 P-B3
4 P-Q4 B-B4 12 NxB NxN
5 N-B3 B-N5? 13 Q-Q2 B-Q3
6 B-K2 P-K3 14 O-O-O O-O
7 P-KR3 B-R4 15 BxN PxB
8 P-KN4 B-N3 16 P-B4?? ...

This move just creates a weakness for White 16 P-KR4 & KN5 is the right way.

16 ... Q-B2 26 RxB RXR+
17 P-B5 PXP 27 QxR QXR+
18 PXP N-K2 28 K-N1 N-Q3
19 QR-B1 QR-K1 29 N-B5 QxBP
20 KR-N1 N-B1 30 P-N3 N-K5
21 B-R6 R-B2 31 NxN PxN
22 N-R4? K-R1 32 K-B1 P-N4
23 B-K3? R/2-K2 33 K-Q2? Q-R4+
24 B-B4 BxB 34 K-Q1 QxQ+--
25 RxB R-K8+! 35 KxQ P-KB4
36 P-B4 K-N2
37 K-K2 P-B5
38 P-N4 K-B3
39 P-QR4 K-K3
40 P-N5 K-Q3
41 P-B5+ K-B2
42 K-Q2 P-KR4
43 K-K2 P-N5
44 RXP P RXP
45 K-B2 P-N6+
46 K-N2 K-N2
47 P-Q5 PXP
48 P-R5 P-Q5
49 P-R6+ K-N1
50 P-N6 PXP
51 P-B6 P-Q6
52 K-B1 P-N7+
53 KXP P-Q7
54 P-R7+ KXP
55 P-B7 K-N2
56 P-BB(Q) KxQ
57 K-R3 P-QB(Q)
58 Resigns



PENNSYLVANIA STATE CHAMPIONSHIP
BIRD'S OPENING
(W) R. Sigmond
(B) John Washington
Notes by JEM.

1 P-KB4 P-K3
2 N-KB3 P-Q4
3 P-K3 N-KB3
4 P-QN3 N-QB3
5 B-N2 B-Q3
6 B-Q3? Q-K2
7 B-N5 B-Q2
8 BxN BxB
9 P-Q3 B-B4?

9 O-O is the move & later N-Q2 & P-K4!

Robert Sigmond and friends

So far I found the book move.

5 P-Q3 P-QB3 6 B-QB4 P-Q4?

Correct is 6...N-K2 7 O-O N-N3 8 P-QB3 B-B4 9 PXP BxP 10 N-B3 P-Q3
11 B-K3! as played by Fick/Spielmann 1923 or 6...N-B3.

7 PXP Q-K2+ 9 KxQ ...
8 Q-K2 QxQ+

This loses a pawn for Black.

9 ... PXP 11 B-QB4 B-Q3
10 BxP N-B3

Stopping R-K1.

12 B-KN5 N-N5 13 P-KR3!

Now White can play R-K1.

24 B-B4 K-N2?

This loses another pawn.

25 B-K5+ P-B3 26 BxQP ...

For a minute I was looking at 26 R-K7+ K-B1 27 BxB. But that isn't good because it allows Black to bring out his pinned Bishop.

26 ... P-QN4 27 N-Q6! ...

Winning at least another Bishop.

27 ... B-N2 29 RxB R-Q1
28 R-K7+ K-B1 30 B-B5 Resigns

PENNSYLVANIA STATE CHAMPIONSHIP
(W) K. Jiles (1370)
(B) E. Mack (1328)
CARO-KANN

10 Q-K2 O-O
11 QN-Q2 N-N5

12 B-Q4 P-KB3 15 NxB B-Q2
13 P-KR3 N-KR3 16 N/4-B3 QR-K7
14 P-KN4 BxB

Now is the chance for 16 P-K4 opening the center where the White King is.

17 P-Q4! P-QB4 19 K-B2? P-K4!
18 P-QB3 P-QN4 20 P-B5 P-KN3?

After 20 P-K5 Black stands better, the text only weakens Black's King.

21 PxNP PXP 27 RxB B-B3
22 OR-KN K-N2 28 R(K)-N R-B3
23 R-N3 KPXP? 29 N-K5 Q-K3
24 BxP P-KB4 30 Q-R5 R-KN
25 P-KN5 N-B2 31 RXP+ 1-0

North Carolina Championship

Dear Earle:

Really liked the last issue.....

Keep up the good work
Tom Galloway

I thought you might, but kidding aside, the good news is that Herbert Horton is going to help us in Asheville. If we can get the members, we might get together and buy out Chrysler or something.

Earle

NORTH CAROLINA CLOSED

September 3, 1979

Chapel Hill N.C.

FRENCH DEFENSE

WINAWER VARIATION

(W) Maurice Dana 1937

(B) Jim Watson 1986

1 P-K4 P-K3 6 PxP N-K2
2 P-Q4 P-Q4 7 P-QR4 QN-B3
3 N-QB3 B-N5 8 N-B3 Q-R4
4 P-K5 P-QB4 9 Q-Q2 Q-B2
5 P-QR3 BxN+ 10 B-K2? ...

10 B-Q3 is better here the idea is to provoke Black's P-B5 thus closing the Q-side.

10 ... P-B3 30 P-R3 BxP+
11 O-O N-N3 31 K-R1 B-N7+
12 Q-K3 O-O-O 32 K-R2 P-R6
13 B-R3 P-B5 33 BxNP R-N4
14 B-Q6 QN-K2 34 P-Q5 NXP
15 B-N4 Q-R3 35 Q-R4+ K-B2
16 Q-B1 P-R4 36 K-R N-R
17 Q-R3 N-B4 37 Q-Q7+ K-N3
18 KR-N P-R5 38 B-R6 N-R5
19 P-R5 N-B5 39 B-Q3+ K-R3
20 B-B R-R3 40 B-K2 NXP
21 Q-B1 P-R4 41 B-K3 NxB
22 R-R2 R-N 42 BxR+ PxP
23 B-B5 K-Q 43 QxKP+ P-N3
24 Q-R3 K-K1 44 R-K3 N-Q5
25 Q-N4 B-B3 45 Q-B6 R-QB
26 N-Q2 R-N3 46 RXP BXR
27 NXP PxN 47 QXP+ K-N2
28 BxP/B4 BxP 48 Q-B6+ K-N
29 BxQ N-B5 49 KxB Resigns

PETROFF DEFENSE

(W) Randy Grim (Unr)

(B) David Antczak (1318)

1 P-K4 P-K4 17 N-N5 P-QR3
2 N-KB3 N-KB3 18 N-B3 P-Q5
3 NXP P-Q3 19 N-Q5 KR-K1
4 N-KB3 NXP 20 KR-K1 B-B1
5 Q-K2 Q-K2 21 R-K4 R-K4
6 P-Q3 N-B3 22 N-N6+ K-B2
7 B-N5 B-K3 23 N-B4 RxB
8 N-B3 QN-Q2 24 PXR P-Q4
9 P-KN3 P-KR3 25 PxP RXP
10 BxN NxB 26 N-K3 R-KR4
11 B-N2 B-Q4 27 N-B1 R-K4
12 QxQ+ BxQ 28 K-Q2 B-N5+
13 NxB NXP 29 K-Q3 R-K8
14 N-Q4 P-QB3 30 RxB BXR
15 BxN PxP 31 P-KB3 B-B7
16 O-O-O O-O-O 32 N-Q2 K-B3

Let on the Knight.

33 K-K4 K-B4 37 K-Q3 K-Q4
34 N-N3+ K-Q3 38 P-QB3 K-K4
35 NXP K-B4 39 NXP B-N8
36 N-B5 P-QN4 40 P-KR3 B-R7
41 N-R5 Resigns

FRENCH DEFENSE

TARRASCH VARIATION

(W) Glenn Evans (1470)

(B) William Dotson (1680)

1 e4 e6 14 Ra3 g6
2 d4 d5 15 Bg5 Be7
3 Nd2 c5 16 B:e7 N:e7
4 e:d5 Q:d5 17 Rg3 Qh6
5 Ngf3 Nf6 18 Ng5 Qg7
6 Bc4 Qc6 19 f4 h6
7 Qe2 a6 20 Ne4 Nf5
8 a4 Bg7 21 Nf6+ Ke7
9 Ne5 Q:g2 22 Qf2 Rac8
10 Rf1 Nc6 23 Rgd3 Rhd8
11 Ndf3 N:e5 24 Rxb3 Rc7
12 d:e5 Nd5 25 R:b7 Rdc8
13 Rg1 Qh3 26 R:d7+ Resigns

If 26...R:d7 27 R:d7+ Kf8 28 Q:c5+ R:c5 29 Rd8+ Ke7 30 Re8mate.

CARO-KANN DEFENSE

(W) Randy Grim (Unr)

(B) Tom Allen (1335)

1 P-K4 P-QB3 7 N-KB3 B-K2
2 P-Q4 P-Q4 8 QN-Q2 P-QB4
3 P-K5 B-B4 9 P-QB3 R-QB1
4 P-KB4 P-K3 10 N-N3 P-B5
5 B-K3 Q-N3 11 N/N-Q2 P-KB3?
6 Q-B1 N-Q2

Opening up the King before developing the K-side, White now attacks along the open file.

12 B-K2 PxP 14 O-O? Q-Q1
13 BPxP B-KN5

A better try for Black is 14...NxBP 15 NxB Bx6 and now if 16 N-B7 BxR 17 NxB R-Q6!! and White will be in deep trouble trying to save the N on KR8 and his Q-side at the same time.

15 Q-K1 N-KB1 16 Q-N3! BxN!?

If 16 R-B2 B-R4! covering the sensitive K2 square and allowing Black to play N-KB3 blocking the file and keeping the pawn.

17 QxNP N-N3

If 17...BxB 18 RxB+ BxR 19 QxR N-Q2 20 B-R6 N-N3 21 QxRP B-Q6 (Not 21... BxB 22 QxN+ K-any 23 QxB) 22 R-KB1 and now 22...Q-K2 23 QxQ+ with 2 passed pawns for the piece or 22 R-KB BxR 23 QxN+ followed by NxB & 2 pawns for the exchange, on 22... BxB? 23 Q-B7# on 22...R-B2 23 QxN+ BxQ 24 RxB+ K-Q2 25 RxB KxR again 2 pawns for the exchange.

18 RxB R-QB2 19 QR-KB1!! ...

Allowing the Q to be trapped, but the pawn on K5 travels to KR8! by the shortest means through a Bishop and two Rooks to become a Queen that's taken off again!

19 ... B-KB3 21 PxB Q-N3
20 PxB RxB 22 PxB(Q) NxB

Now the Rooks penetrate and gobble up the two Knights.

23 R-B8+ K-Q2 25 R-B7+ K-B3
24 RxB N-N3 26 RxBKR N-K4!?

Where else?

27 R-QB8+! K-N4 30 R/5-B7 QxBP
28 R-B5+ K-R3 31 NxBP! Q-K8+
29 PxB QxNP

Protects the attacked Bishop and removes the advanced pawns.

32 B-B PxN 34 BxP+ K-R4
33 B-B2 QxKP? 35 R-B5+ Resigns

SCOTCH GAMBIT DECLINED

(W) Ron Simpson (1781)

(B) Duchess (1889)

1 e4 e5 2 Nf3 Nc6 3 d4 e:d4 4 c3 d5 5 e:d5 Q:d5 6 c:d4 Bg4 7 Be2 O-O-O 8 Nc3 Qf5 9 Be3 Nf6 10 Qa4 Kb8 11 O-O Qh5 12 Ra1 Bd6 13 h3 Bd7 14 Nb5 Bf7 15 R:c6 B:c6 16 Q:a7+ Kc8 17 Ne5 Bf8 18 Qa8mate.

Duchess (1889) D. Steele (2115)

1 P-K4 P-K3 18 QxQ BxQ
2 P-Q4 P-QN3 19 RxB N-B6+
3 N-KB3 B-N2 20 K-R1 PxB
4 P-K5 P-QB4 21 B-N2 B-N2
5 B-QB4 N-K2 22 N-R3 P-KN4
6 O-O QN-B3 23 B-K3 P-KR4
7 B-Q2 N-N3 24 N-N5 P-R5
8 R-K1 N-R5 25 NXP+ K-N1
9 KB-B1 NxB+ 26 BxQNP PxP
10 QxN Q-R5 27 P-KR3 RxB+
11 P-B3 O-O-O 28 BxR R-R1
12 Q-Q3 P-Q3 29 K-N2 N-K4+
13 P-KN3 Q-K2 30 K-N2 RxB
14 PxP QxP 31 PxP R-R8+
15 B-B4 Q-Q4 32 K-B2 RxB
16 Q-B4 B-Q3 33 Resigns
17 RxB? NXP!

RAM V

September 15, 1979 Chapel Hill NC

SCOTCH GAME

(W) Kevin Chester (1468)

(B) Oscar Nothnagle (1483)

1 P-K4 P-K4 4 NXP N-KB3
2 N-KB3 N-QB3 5 N-QB3 B-K2?
3 P-Q4 PxP

Book is B-N5, NxB NXP, B-Q3 P-Q4, PxP PxP, O-O and Black is OK.

6 P-KB4 P-Q3 8 O-O P-QR3
7 B-K2 O-O 9 P-QR4 ...

Preventing 9...P-QN4.

9 ... B-Q2 12 N-N3 B-B3
10 B-K3 N-QN5! 13 B-B3 P-KR3
11 P-KN4 P-B4 14 Q-K2!?

14 P-N5 immediately might be better, but this threatens to bring the Queen over and can't be all bad.

14 ... Q-B1 16 PxP N-R2
15 P-N5 PxP 17 N-Q1?!

With the idea of sacking the NP to trap the Knight.

17 ... NxBP 19 P-B3 P-B5!
18 BxN BxB

I hadn't counted on this.

20 QxBP Practically forced.

20 ... N-B7 25 QxB B-B7
21 R-N1 R-K1? 26 F-B1 BxKf
22 Q-Q3 Q-K3 27 BxB QxB
23 QxN BxRP 28 N-B2 Q-B3
24 Q-N2 BxN

Black has two pawns and some pressure, I have to be careful.

29 R(KB)-K1 Forced otherwise... R-K3.

29 ... P-R4 35 Q-K4 Q-N4+
30 N-Q3 R-K5 36 Q-N2 Q-KB4
31 RxB QxR 37 R-K7! P-KN4
32 Q-N3 R-Q1 38 Q-K4 QxQ
33 R-K Q-KB4 39 RxB ...
34 Q-R4 P-KB3

In this ending White has many weaknesses and must be careful, otherwise Black can liquidate pawns, and at least Draw.

39 ... K-B2 40 R-QR4? ...

40 ... P-N3 41 R-K4 P-Q4

42 R-Q4 K-K3 44 N-N2 P-N4
43 N-K1 R-QB1 45 N-K3 ...

Just in time to prevent P-N5.

45 ... R-B4 47 N-B2 ...
46 K-B2 P-R5

Preventing P-R6, and P-N5.

47 ... K-K4 49 P-KR3 K-K3
48 K-B3 P-B4 50 P-R4 ...

In order to penetrate.

50 ... PxP 60 R-K2+ RxB
51 RxB K-K4 61 KxB K-K5
52 K-K3 R-B3 62 N-Q4 K-K4
53 R-KB4 R-KR3 63 K-B3 K-Q3
54 N-Q4 R-R6+ 64 KxB K-B4
55 R-B3 P-B5+ 65 K-K5 K-B5
56 K-K2 R-R7+ 66 Q-Q6 P-R6
57 R-B2 R-R8 67 PxP KxB
58 NxBP R-N8 68 KXP Resign
59 K-B3 R-KB

SANDHILLS II

Mr. Francis Smith to Tom Allen's 4 year old son.

"Are you going to play chess when you grow up?"

"Yes I am going to play the White ones so I can say check."

A NEW LINE IN THE BENKO COUNTER-GAMBIT by Alan Rufty.

The following line is pivotal in the Benko Gambit- 1 P-Q4 N-KB3 2 P-QB4 P-B4 3 P-Q5 P-QN4 4 PxP P-QR3 5 N-QB3 PxP 6 P-K4 P-N5 7 N-N5 P-Q3 8 B-KB4 P-KN4*. After extensive home analysis I found the following line- 9 BxNP NxBP 10 Q-K2! NxB 11 P-KR4 N-K3 (11 N-R6? 12 NxB N-B2 13 N-N5 gives White the initiative, i.e. 13... P-R3 14 N-K4 O-O 15 P-N4!) ** 12 PxN. About a year ago I looked at (A) 12...PxP and decided White had the upper hand, leaving (B) 12...BxB as the main line. After (B) 12...BxB 13 Q-K4! 13...RxB appears to be the only playable move since 13...P-Q4? allows 14 Q-K5! while 13...R-R4 fails to 14 Q-N7 B-N2 15 N-B7+ K-B 16 Q-N6 The consequences of (B) 12...BxB 13 Q-K4 RxB 14 RxB are nebulous so I put the line aside.

I showed this variation to Pal Benko at the recent Atlantic Open. He didn't even suggest looking at 13...RxB after (B) 12...BxB 13 Q-K4 so it was apparent I was overlooking something obvious. (Pal was more interested in (A) 12...PxP the analysis to which I had forgotten.) Later I discovered the "obvious" reply to 13...RxB namely 14 NxB+!! (i.e. 14...QxN 15 B-N5+ N-Q2 16 Q-R8+!).

Thus (A) 12...PxP 13 Q-R5+ K-Q2 is the true main line; however, after 14. B-B4 (14 Q-B7 may be premature, i.e. 14...Q-R4 15 B-B4 K-B3 is unclear) White has a strong attack (14...B-N2? 15 Q-B7!).

*See for example, Benko Counter-Gambit by David Levy (1978).

**11...N-K5 doesn't quite seem to work either though matters are more complex:

i.e. 12 QxN B-KN2 13 B-B4! BxNP 14 R-N B-KN2 15 N-KB3 O-O 16 N-N5 P-KB4 17 Q-B3 P-R3 (17...N-R3 18 Q-R5 P-R3 19 Q-N6! PxN 20 PxP B-Q2 (nothing else works either) 22 R-N3 followed by R(3)-KR3 & R8+ 18 N-K6 BxN 19 PxN N-R3 (19...Q-R4 allows the threat of NxQP, i.e. 20.

0-0 K-R1 21 NxQP PxN 22 P-K7 R-K1 QxKBP RxP 24 B-Q3 and mate shortly)
20 R-R3 with a strong K-side attack. If 11...N-B6+ then 12 NxN B-N5 13
P-QR4 PxPe.p. 14 RxP RxR 15 PxP B-N2 16 Q-Q2 BxN 17 PxB P-KR4 18 P-R4.

SCHULTZ RESIGNS

Dear GCA Members:

I am very sorry to say that I must resign as President of the Georgia Chess Association. My firm has temporarily transferred me to Paris, France. I will be moving on or about December 1, 1979.

When I took office last spring the GCA was in substantial debt, and our financial records were not current. I think we are well on the road to recovery. The US Open scheduled for next August in Atlanta can be the start of a new era of chess growth in Georgia, and in the South. We are in the process of instituting a five minute rating system that will help promote membership growth among non USCF players.

I leave Georgia knowing that state chess activity is in the very able hands of Thad Rogers, Georgia's foremost chess organizer.

I expect to be back in the US from time to time during the next few years. I will try to play in some GCA tournaments during those visits, and will certainly help Thad with the US Open next year. I also expect to return to Atlanta in two to three years and resume helping chess organizing. It is therefore not goodbye, but "au revoir".

Thanks again for all your support.

Don Schultz

An Important addition to U.S. (and Georgia) Chess
by Mike Decker

I received a phone call a few weeks ago from a spokesman for Atlanta's Russian emigre community asking about the status of chess in the state and the nation. It seems that a cousin of one of our Russian residents was interested in moving to Atlanta--and playing chess. His name is Boris Kogan; his international rating is 2430 and he has recently achieved his first GM norm in an international tournament.

A further talk with the master's relatives revealed that Mr. Kogan (42) his wife and two children have just received permission to leave the Soviet Union. As with many other recent Jewish emigres, the Kogans will be spending a few months in Italy until the paperwork for their move to the United States is completed. When they arrive here in the spring, Mr. Kogan will have to choose between New York and Atlanta for his home. He and his relatives here would prefer that he come to Atlanta--but it is not at all clear that a grandmaster-class player can make a living at chess in the South. That decision is yet to be made, but I sensed that he will probably try Atlanta first. If anyone can offer any advice or help to this new family, please contact me at 1269-A N. Morningside Dr., Atlanta, Ga. 30306.

SEIRAWAN WINS WORLD JUNIOR
By Denis Druash

I was very fortunate this summer to have had the opportunity to vacation in Norway. While there I decided to drop in on the World Junior Championship which was being held in Skien. (Pronounce like shea-n in New York's Shea Stadium). The tournament was held at Ibsen huset (The house of Ibsen) named after the famous Norwegian playwright Henrik Ibsen. While there I met Yasser Seirawan who represented the United States, his second John Donaldson and a host of other players from the 40 plus countries represented. I was really impressed by the friendliness of Yasser and John. I had seen and heard of so many higher rated players acting immature that it was a pleasure to meet someone who chess success had not spoiled. In fact I nearly missed my train back to Oslo because John was showing me some of his "home brew" against the Moroccan Blind.

Well now for the tournament. When I arrived on Friday afternoon, August 3rd Yasser was in what appeared to be a defendable position against Rudy Douven of the Netherlands. However, a few hours later Douven had managed to defeat Yasser with a King side attack. This proved to be Yasser's only loss. In fact, by Saturday Yasser had recovered so well that he played one of the most brilliant games of the tournament in defeating Gerardo Berbert of Argentina. The game was a real "pin-job": (see game below). Well I stayed for the weekend, but then had to leave Sunday for Oslo since I was going camping in the mountains that next week.

By that next Friday I was about 150 miles North of Oslo away from everything but goats, sheep and alot of moss. Anyhow I heard on the radio that Yasser had won the tournament by 1/2 point over the

Russian Alexander Chernin. The finalist were as follows:

1. Yasser Seirawan	United States	10 - 3
2. Alexander Nikolic	Soviet Union	9.5- 3.5
3. Predrag Nikolic	Yugoslavia	8.5- 4.5
4. Rudy Douven	Netherlands	8.5- 4.5
5. James Plaskett	Britain	8.5- 4.5
6. A. Negelscu	Rumania	8.5- 4.5

Once again it was a fantastic trip and we in the United States can be proud that we have two such players as Yasser and John to represent us.

ENGLISH OPENING				23 Q:d8	R:d8	29 e5	R:g2
(W) Seirawan	(B) Berbert			24 B:c7	R:d2	30 K:g2	a4
1 P-QB4	P-K4	4 P-K3	B-N5	25 Bd6	Bg7	31 Ral	a3
2 N-QB3	N-KB3	5 Q-B2	BxN	26 Khl	R:a2	32 c6	b:c
3 N-B3	N-B3	6 QxB	Q-K2?	27 Rf7!	Kg8	33 R:a3	Resigns
				28 Re7	a5		

The simple 6...P-Q3 is better.

7 P-QR3	P-QR4	12 PxN	NPxP
8 P-QN4	PxP	13 PxP	O-O
9 PxP	O-O	14 B-QN2	N-K1
10 QxR	P-K5	15 B-Q3	Q-R5
11 P-N5	PxN	16 K-K2	P-QB4

With the idea of B-N2, but 16...
P-Q4 is better.

Black cannot stop White's K-pawn.

PECS-VENGRIA, HUNGARY
November 1978

NIMZO-INDIAN DEFENSE

NOTES: by Mike Decker

1 P-Q4	N-KB3	5 PxP	O-O
2 P-QB4	P-K3	6 N-B3	N-R3
3 N-QB3	B-N5	7 P-QR3	BxN+
4 Q-B2	P-B4	8 QxB	N-K5

Forcing simplifying exchanges.

9 Q-B2	Q-R4+
10 B-Q2	NxB
11 QxN	QxQ+
12 NxQ	NxP
13 P-QN4	...

White has an edge, but not the kind out of which many winning chances evolve. Black's Knight will be misplaced, and his Bishop slightly bad while White has a Q-side space advantage. But, Black's position is fundamentally sound and White has no way of exploiting the weak dark squares.

13 ...	N-R5
14 P-N3	P-QR4
15 B-N2	N-B6

Fixing temporarily White's Q-side pawns on light squares.

16 P-N5 P-Q4 17 R-QB1 ...

17 PxP with play against the isolated QP also maintained an edge--the text move aims at re-activating White's Q-side pawns.

17 ... P-Q5 19 BxN P-R5
18 N-K4 NxN

This manoeuvre is too artificial and does not really delay White's Q-side pawn play. 19...P-B4 or R-N are better.

20 R-QN P-B4 23 K-Q3 R-Q1
21 B-N2 R-R4 24 P-B5! ...
22 K-Q2 P-QN3

After this break it is doubtful if Black can hold against the coming King infiltration. Black's Rook at QR4 is out of play and subject to tempo-winning manoeuvres.

24 ... 27 B-B6 BxB
25 K-B4 B-Q2 28 KxB ...
26 KxP R-N1



17 Q-R8	N-Q3	20 QxP	QxRP
18 R-KN1	P-KB3	21 R-N3	P-R4??
19 Q-Q5+	K-R1		

Allows the following combination, but Black is lost anyhow.

22 RxP!!	KxR	25 B-N6+	N-B2
23 Q-N5+	K-B2	26 B-K5	1-0
24 QxBP+	K-K1		

On Q-R6 27 BxBP & 28 Q-Q8 mate.

ENGLISH OPENING
(W) Seirawan (B) Svart

1 c4	g6	12 b:c	Nc6
2 Nc3	Bg7	13 Nd2	f4
3 g3	Nf6	14 Nde4	Nd4
4 Bg2	O-O	15 Qd1	Bg4
5 d3	d6	16 h3	Bc8
6 Rb1	e5	17 e3	Nf5
7 b4	Nh5	18 Kh2	Nf6
8 Nf3	f5	19 e:f	e:f
9 Qb3	h6	20 B:f4	N:e4
10 O-O	Kh7	21 d:e	N:g3?
11 c5	d:c2	22 f:g	B:c3

No more bad Bishop, but now the K & QNP are enough for White to win.

28 ... R-B1+	35 R/N-N4	R/R-N1+
29 K-N6	R/R-R	36 K-B6
30 R/R-QB	R-Q1	37 K-N5
31 R-B4	P-Q6	38 RxR
32 PxP	RxP	39 P-N7
33 K-N7	R/Q-Q	40 K-B6
34 P-N6	K-B2	Resigns

WORLD JUNIOR
SICILIAN DEFENSE
PELIKAN VARIATION
(W) Jusupov (B) Beitar

1 e4	c5	9 Na3	b5
2 Nf3	e6	10 Bxf6	g:f
3 d4	cd	11 Nd5	f5
4 N:d4	Nf6	12 Bd3	b5
5 Nc3	Nc6	13 0-0	f4
6 Ndb5	d6	14 c4!	b4
7 Bf4	e5	15 Qa4!	Bd7
8 Bg5	a6	16 Nb5!	...

If 16...a:b? 17 Q:a8 Q:a8 18 N:c7+ Kd8 19 N:a8 and the Knight will escape via b6 to d5.

16 ... Rc8	35 Kh3	Rc7
17 Q:a6	Be7	36 Nd4+
18 Qb6	Rg8	37 Nf5
19 Q:d8+	K:d8	38 Kh2
20 f3	Be6	39 Ng7+
21 Rfd1	Nd4	40 Nf5
22 N:d4	e:d	41 b4
23 N:b4	B:c4	42 a4!
24 B:c4	R:c4	43 a5
25 R:d4!	R:d4	44 Ra2
26 Nc6+	Kd7	45 a6
27 N:d4	Bf6	46 Ng7+
28 Rd1	Ra8	47 N:h5
29 a3	Be5	48 g4
30 h3	f6	49 N:g3
31 Rd2	Ra4	50 e:f+
32 Nf5	Rc4	51 Kh3
33 Kh2	Ke6	52 Ra5
34 h4	h5	53 Nh5+!

Late News

Tournament chess players will once again see their ratings updated on their Chess Life & Review mailing labels—November issue will carry the first new ratings since March. In very early November chess clubs around the country will receive copies of the Fall 1979 Rating Supplement, a new basis for tournament seedings and prizes. This new supplement will contain all players whose ratings have changed since the February/April 1979 supplement. The new ratings will concur with those on the members' mailing labels, and contain events finished August 9, 1979, or earlier. The next rating list will probably be the Annual List in the January Chess Life, and should include events played by October 15th or so.

WORLD CHAMPIONSHIP
Eight Grandmasters will now compete for the right to challenge World Champion Anatoly Karpov in the next World Championship Match. These Candidates are Boris Spassky, a former World Champion from Leningrad, Viktor Korchnoi, the stateless Grandmaster who unsuccessfully challenged Karpov for the championship in last years hotly contested match in Baguio City, Hubner, Petrosian, Portisch, and the three qualifiers from the recent Riga Interzonal—former Russian World Champion Mikhail Tal, Lev Polugaevsky of the Soviet Union, and the winner of a playoff match between Hungarians Andras Adorjan and Zoltan Ribli. Korchnoi is seeded into

Nov.17-18

Asheville Chess Club Sponsored
Fall Classic

45/2

5-SS

\$600 Prize Fund!!

Guaranteed!

Ramada Inn, 126 & 64, Hendersonville, N.C. Ph. 1-800-228-2828 HR: \$18-20

EF: Open \$10, Reserve \$7 if rec'd by 11/15, \$3 more at site.

Prizes: 125-75, A & B 50-30 each
Reserve: 75-45, D & E/Unr 40-20 each

USCF & STATE Req'd

REG: 8:15-9:15

RDS: 10-3-8, 10-3

ENTER: Herbert T. Horton, TD

P. O. Box 365

Black Mtn., N.C. 28711

Ph. 704-669-2109

UPSET PRIZE \$10

the Candidates cycle as the last Challenger for the World Championship and Spassky is seeded as the last player eliminated from the previous cycle. Karpov's ultimate challenger this time around will be decided by a series of elimination matches.

BOOKS

THE KING'S GAMBIT ACCEPTED
By Ludek Pachman
Edited by James R. Schroeder

This is an excellent little (30 page) opening book, neatly done, for only \$1.50 it is a real bargain.

US CHAMPIONSHIP CROSSTABLES

For those of you who are into crosstables, this is a must. Some 26 tournaments are covered from 1936 to 1978. Only one dollar, can you beat that? Order the crosstables or The King's Gambit Accepted from James R. Schroeder, PO Box 5268, Cleveland, Ohio 44101.

CORRECTION

In the previous issue there was a remark that implied Northwest Chess had less circulation over the last ten months, while that was not the intention of the remark, it was hard to read it any other way, a good example of poor writing. In any case Northwest Chess has increased its circulation over the last 10 months.

The Press

For the sake of those who have recently come into the magazine, and because some mis-conceptions exist, let me point out a few things about the mechanics of how this magazine works:

- 1) Pictures must be black and white, and should be clear as a bell. It is helpful if you have a light background. People with beards, generally, do not come out well.
- 2) Deadlines- To be safe, you should have your material in by the 8th of the even numbered month. However, The Chessman is set up to take late material, for instance half of this magazine has already been printed while this article is being

written. So send material constantly (as does Ira Riddle) and it will be worked in. The important thing is that some material comes early, so we can get started. There is little to be gained by sitting on material. MAIL EVERYTHING EARLY IN DECEMBER.

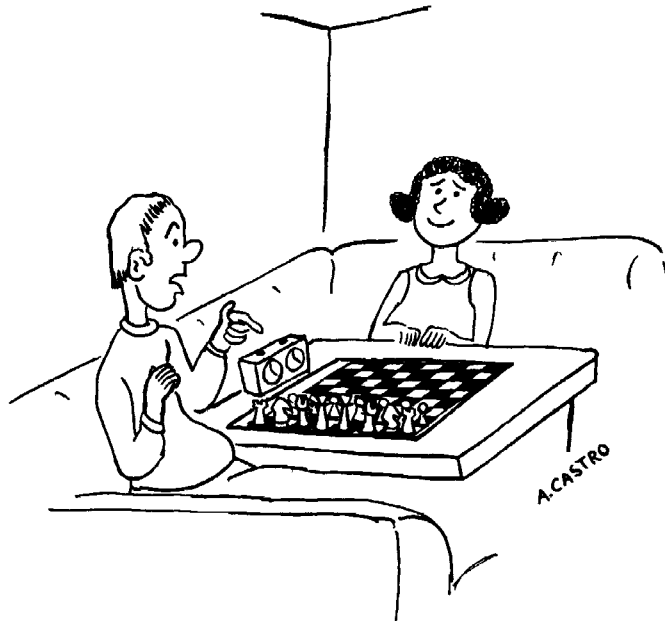
- 3) There is always room for good material in TC, and yet there is never need for "Filler". The economics of TC are not the same as CL&R. Additional pages for TC are not expensive (Most of the cost is in the cover and mailing.), and the bigger magazines, so far, have been the most profitable, as they bring in far more revenues.

Six weeks ago, the chess news, was by no means all good, and you will see that reflected in some of the articles that follow. By mid-summer the cumulative effects of difficulties with the rating system, general economic conditions, and the reduction in the tournament life section of CL&R began to take their toll. These problems are temporary, and for myself, I retain confidence in our Chief, Gary Sperling, to bring us a bountiful 1980, his address is--oh never mind.

Merry Christmas
J. Earle Morrison

ST. DAVIDS HSA TOURNAMENT

(W) Bobby Gaidjunas (B) D. Zimmerman
1 P-KR4 N-QB3 2 P-KB3 P-KN3 3 P-KN3 B-R3 4 P-KB4
BxP 5 P-KN4?? B-N6 Checkmate.



OK. ALISON ANOTHER SPEED GAME BUT
WITH THIS HANDICAP

WHERE TO PLAY CHESS

Clubs

ARKANSAS

Little Rock: Little Rock CC, Arkansas Enterprises for the blind, 28th & Fair Park Blvd., Fri. 6-11 PM.

FLORIDA

Coral Gables: Coral Gables Memorial Youth Center, Mon. 7 PM. call Paul Daich 279-8720.

Jacksonville: Community Hall at the Phillips Mall Shopping Center, 3563 Phillips Hwy. Wed. at 7:30 PM.

Melbourne: Melbourne CC, Old Civic Center, Front St. call Fred Arnold 724-2704. Mon. Noon-6 Wed. at 7:30 PM.

Miami: Miami CC, Miami Legion Park Hall, 64th St. & Biscayne Blvd. Sat. & Sun. 1-5 PM call Charles Turk 226-8235.

Orlando: Orlando Rec. Bldg. Paramore & Livingston, Wed. & Fri. 7:30 PM. & Sunday 1:30 PM call Larry Storch 273-4982.

Pompano Beach: Pompano Beach Rec. Center, 1801 N.E. 6 St. Fri 7:30 PM.

St. Petersburg: St. Pete CC, 540 4th Ave. N., call Gil Cantrell 527-6010.

Tallahassee: Tallahassee CC, FSU Univ. Union, Woodward Ave. & Tenn. St., Rm 346, 7 PM Tue.

GEORGIA

Adel: Cook County CC, Cook High School, Thu. 3:05 PM.

Albany: CC, NW Branch Library (Day & Time ?)

Athens: Athens CC, Dudley Park, Thu. 8 PM. Univ. of Ga. CC, Chem. Bldg. Rm.1505 Wed. 7:30 PM.

Atlanta: Northeast CC, St. Michaels Church, 3323 Chestnut Dr. Thu. 7 PM.

Augusta: (See SC, N. Augusta)

Dalton: Contact W. Strain, 1508 Dug Cap Rd.

Gainesville: Lanierland CC, Breneau College, Yonah Hall, 7:30 PM Tue.

Columbus: Columbus College, Davidson Center, Wed. 7 PM.

Macon: Macon CC, Robert Train Bldg., Oglethorpe Blvd. Wed. 7 PM.

Rome: Rome CC, Rome Rec. Center, 300 W. 3rd St. Fri.

Savannah: Armstrong College CC, Gamble Hall, Fri 12:30 PM.

Savannah CC: Duffin Park Activities Bldg. Mon 7

Statesboro: Statesboro & Ga. Southern Ctr. Mon and Fri 7 PM.

St. Simon's: Island CC, Island Club, 800 King's Way, Mon. 8 PM.

Thomasville: Civic Center, Tue. 7:30 PM.

Valdosta: Tall Tree Apts. Rec. Ctr. 200 Connel Rd. Tue. 7:30 PM.

NORTH CAROLINA

Asheville: N. Asheville Community Center Wed 7.

Chapel Hill: UNC-Ch CC, Carolina Union, Thu 7:30

Charlotte: Metrolina CC, Central Community College, Wed. 7:30 PM.

Fuquay-Varina: Fuquay-Varina Sr. High School, 201 Broad St. Thu. 2:30-4:00 PM.

High Point: Oakview Rec. Ctr., James Rd. Thu 7.

Mars Hill: Mars Hill College, Memorial Library, Thu. 7:30 PM.

Raleigh: Tucker House, 418 N. Person St. Fri. 7:30-11:30 PM.

Rockingham: Sandhills CC, Parks & Rec. Bldg. Wed. 7:00 PM.

Statesville: Northwest Bank, Front & Ctr. St. Fri. 7:30 PM.

PENNSYLVANIA

Allentown: 1100 S. 24th St. Fri. evenings.

Bristol: Elevator Club, Grundy Library, 3rd Monday

Folsom: Embassy CC, Pete's Embassy Restaurant, Kedron Rd. (Pa Rte 420) & McDade Blvd. Tue. 7.

Hatboro: Chaturanga CC, Thu. evenings, Loller Bldg. South York Rd.

Levittown: Del. Valley CC, Faith Reformed Church, Levittown Pkwy; Tuesday.

Morrisville: Penn-Jersey CC, Jaycees Bldg., Hillcrest Ave. Mon. evenings. Ph 943-3758.

Philadelphia: Black Knights CC, 1525 S. Wilton open from noon to midnight except Wed. & Sun. Ph 729-8031. Guest \$2.

Lawncrest: Rec. Ctr. Rising Sun Ave. & Comely St., Crestentville, Tue. 7:30 PM.

American Legion: Post #396, Milner & Orthodox Sts., Bridesburg. Wed. 8 PM.

Northeast Regional Library, Cottman Ave. & Oakmont St. Sat. Noon - 5:00 PM.

Pittsburgh: Golden Triangle YMCA, 304 Wood St. Thu. evenings & Sat afternoon & evenings.

Wilkes-Barre: Hotel Stirling, Wed. 6:30 PM.

SOUTH CAROLINA

Charleston: Post Courier Bldg. 6296 Rivers Ave. Wed. 7 PM.

Columbia: Palmetto CC, Wade Martin Bldg. of Midlands-Tec, Beltline Campus Cafeteria 7-10:30 PM. Thu.

Univ. of SC CC: Moore Dorm Conference Rm. Mon. at 8:00 PM.

Greenville: Bobby Pierce Community Ctr., Townes St. Wed. 7 PM.

Greenwood-Lander CC: Rm 263, Old Main Bldg., Lander College, Thursday at 7:30 PM.

Lancaster: Star Hall, Univ. of SC at Lancaster, Thu. at 7:00 PM.

North Augusta: N. Augusta Rec. Ctr., Wed. 7 PM.

Rock Hill: Fewell Park Rec. Ctr. between Alexander & Thornwell, Tue. 7:30 PM. call 328-3433.

Spartanburg: Sugar & Spice Cafe, North Pine St. Tue. 7:30 PM.

Bring your own sets and clocks to the Chess Clubs. Many school clubs do not meet in summer.

TOURNAMENTS

Nov 17-18 Junior Championship

Ar.

Arkla Clubhouse; EF:\$10; Unrated \$5, First Tmnt. Free. REG: 8-9 A.M. Saturday. USCF & ACA membership req'd. 5-SS; TL: 50-2; RDS: 9:30-2-7;9-2. Prizes per entries; Trophy to 1st & 1st under 16

Nov 17-18 LRCC Preliminaries

Ar.

5-SS, Arkla Clubhouse, EF: \$5 or 5 points in Quads. TL: 50/2, RDS: 9:30,2,7; 9-2. Membership in LRCC,ACA, & USCF all req'd. Prizes: Top four qualify for finals to be held Dec 15-16 EP's to go to LRCC Champion,Reg: 8-9 AM Sat. LRCC dues are \$8.00 per year.

Nov 17-18 Fall Classic

NC

Ramada Inn, Junction I-26 & 64, Hendersonville, NC. EF: Open \$10, if rec'd by 11/15 - \$13 at site Reserve \$7, if rec'd by 11/15 - \$10 at site. HR: \$18-22 call 1-800-228-2828 (toll free) mention chess for special rates. Chess boards and score sheets provided. ENTER: Herbert Horton, P.O. Box 365, Black Mtn., N.C. 28711 call 704-669-2109. RDS: 10-3-8, 10-3; REG: 8:15-9:15 at site. 5-SS TL 45/2 USCF & State memberships req'd. PRIZES: Open Section \$125-75, Top A \$50-30, Top B \$50-30; Reserve Section \$75-45 Top D \$40-20, Top E \$40-20 Unrated may win Top E prize only. Only one cash prize per person except special up-set prize \$10.

Nov 17-18 Chaturanga Open

Pa.

Loller Academy, 424 S. Old York Rd., Hatboro, Pa. 19040, 5-SS, REG: 9:00-9:45, TL 40/80, 30/1 RDS: 10-2:30-7:00, 10-2:30, NS. EF: \$15 at site, \$1 off for PSCF members. A minimum \$100 first prize is guaranteed. PRIZES: (\$500 b/60) \$250-100, Top A/B \$75., Top C/D \$50., Top E \$ 25. Enter: Richard Kraft, 546 Coach Rd., Horsham Pa. 19044.

Nov 27-28 Atlanta Open

Ga.

(see ad pg. 8)

Dec 8-9 End of Autumn Open

Ga.

5-SS, TL 45/2, Marriott Hotel, I-285 at Ashford-Dunwoody Exit, Atlanta. EF: \$13.50 if rec'd by 12/1; \$15.75 at site; GCA membership req'd (other states ok). Prizes: (based on 70) \$150-100, A,B,

C,D,E, Unr each \$75. REG: 8:30-9:30 AM, RDS: 10-3-8, 10-3. HR: \$28-28. Enter Steve Hunt, 66 Maypop Lane, Decatur, Ga. 30035. NS. December 8 Sat. Quad 3-RR, 30/30, EF: \$5.50 if rec'd by 12/1; \$ 7 at site. Trophy to 1st each section; REG: 10-10:45, 11-1-3. NS. GCA Req'd (other states OK), same address and ENT as above. December 9 Sun. Quad 3-RR,30/30. Same addr., ENT,EF,Trophy, as above. REG: 12-12:45 PM, RDS: 1-3-5; NS, State Req'd.

Dec 22 Chaturanga Swiss

Pa.

3-SS; Loller Bldg; South York Rd, Hatboro, Pa 40/1, EF \$6, \$5 to PSCF Members. In 8 man sections, Prizes:(b/8) \$15-10 or Trophies. REG: 8:30-9:30 AM. Rd 1 at 10 AM then consecutively.

Dec 27-29 Tucker Classic

Ga

Tucker Recreation Center, 4316 Church St. in Tucker. 5-SS, 40/1. Inquires to Nick Cox, 2991 Toney Dr., Decatur Ga. 30032. EF: \$5 for adults \$3 for under 16 if rec'd by 12/21 USCF & GCA memberships are req'd. EF: \$7 for adults & \$5 for under 16 at site. Rounds begin at 7 PM on the 27th. An unrated section will be open to all. Send entries with check or money order payable to the DeKalb Recreation Division (cash is not accepted) to the Tucker Recreation Center, 4316 Church Street, Tucker, Ga. 30084. Make USCF & GCA memberships payable to Mike Decker. 100% of entries less rating fees returned in Trophies. Champion gets free entry next year.

Jan 12-13 Pa Team Tournament

Pa

5-SS, TL 40/90, at Cheyney State College, ADA S. Georges Dining Hall: Cheyney, Pa. Open to in-or-out of state teams of 4 plus one alternate. EF: \$60, less \$5 per PSCF member (up to \$20 discount), other states OK. Prizes: \$(based on 12 teams) \$250 + Trophy, \$150 + Trophy, Trophy to third. All extra monies beyond expenses will be returned as additional prizes. RDS: 10:30-3:00-7:30, 10:00-2:00. REG: 8:30-10:00. HR: college dorms, approx. \$3.50 per night. Entries, info., maps from Dr. R. Eikerenkoetter; Box 405; Cheyney, Pa. 19319. State titles will be awarded to top team, top college team, top High School team, top junior-high team, top elementary team. TD Mr. Ira Lee Riddle, Ph. 215-674-9049.

Jan 26-27 Fl. Grand Prix

Fl.

5-SS, Reitz Union, Univ. of Florida, Gainesville 32601. In 2 sections: Open, TL 30/90. EF: \$20, under 18 \$15 by 1/21. Prizes (\$900 b/50, \$450 guaranteed): First and Top A are guaranteed other are based on \$350-200-50, Expert, Top A, Top B each \$100. Reserve Section: Open to under 1600, TL 40/100; EF: \$18 under 18, \$15 if rec'd by 1/21 Prizes: First and Top D are guaranteed, others are based on 55 players - \$225-175-125-75, Top D & Top E each \$75, Unrated \$50. Chess books for plus scores. Both, EF: \$5 more at site; Free for women. State membership req'd REG: 7:15-8:30 AM, RDS: 9-2-7, 10-3. HR: Reitz Union reservation: 392-2151 18-22-25, mention chess. by 1/11. Enter: Jay King, Box 13162 University Station, Gainesville, Fl 32604 NS. 1/2 point bye in first round if requested in advance. 5 Grand Prix Points Available

The Chessman is the official state publication of Arkansas, Florida, Georgia, North Carolina, Pennsylvania, South Carolina, and West Virginia.

PENNSYLVANIA STATE CHAMPIONSHIP Folsom, Pa. September 1-3, 1979

CROSSTABLES

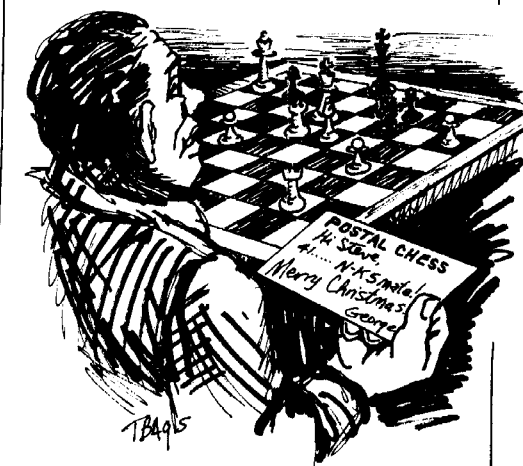
Player	RTNG	Rd1	Rd2	Rd3	Rd4	Rd5	Rd6	TOT
1 Dorosetti, Anatoly	Unr	W15	W10	W4	W17	W8	D2	5½
2 Costigan, Rich	2212	W44	W12	D3	W5	W17	D1	5
3 Szendroi, Robert	2011	W11	W21	D2	W19	D4	W8	5
4 Mitchell, Arthur	1992	W37	W29	L1	W14	D3	W12	4½
5 Thompson, Don	1803	W24	D34	W38	L2	W15	W11	4½
6 Fortado, Bruce	1858	W30	L7	W34	W27	W18	D9	4½
7 Hamilton, Alvin	1375	W31	W6	L8	D10	W35	W18	4½
8 Nolan, Greg	2036	W35	W27	W7	W9	L1	L3	4
9 Goodman, Jess	2054	W20	D38	W13	L8	W19	D6	4
10 Patterson, Robert	1794	W23	L1	W11	D7	D20	W22	4
11 Roseman, William	1458	L6	W41	L10	W39	W34	W20	4
12 Wrigley, Clayton	1794	W14	L2	W35	D20	W16	L4	3½
13 Dyck, N. Paul	1660	D40	W26	L9	W29	W33	L5	3½
14 Streeter, William	1388	L12	W46	W21	L4	W27	D19	3½
15 Hoffman, Stephen	1530	L1	W23	D36	W31	L5	W26	3½
16 Strube, Thomas	1435	L33	D25	W40	W38	L12	W23	3½
17 Bradlow, Harvey	2139	W22	W18	W33	L1	L2	-	3
18 Kendel, Robert	1623	W36	L17	W39	W33	L6	L7	3
19 Tourian, Souren	1545	Bye	W40	W28	L3	D9	D14	3
20 Jurin, Bruce	1484	L9	W43	W32	D12	D10	L11	3
21 Markovitz, Neil	1578	W41	L3	L14	W26	L23	W37	3
22 Curtiss, James	1497	L17	L36	W43	W41	W29	L10	3
23 Streeter, Wallace	1387	L10	L15	W31	W24	W21	L16	3
24 Fediv, Theodore	Unr	L5	W31	L27	L23	W42	W38	3
25 Feinstein, Michael	Unr	L27	D16	L29	D40	W43	W35	3
26 Tourian, Arel	Unr	Bye	L13	W30	L21	W36	L15	2½
27 Hathaway, John	1588	W25	L8	W24	L6	L14	D30	2½
28 Bilenky, Mark	1672	D29	W37	L19	W36	-	-	2½
29 Borek, Greg	1337	D28	L4	W25	L13	L22	W39	2½
30 Jackson, Francis	1417	L6	L32	L26	W42	W40	D27	2½
31 Daskus, Richard	1727	L7	L24	L23	W43	D39	W32	2½
32 Bender, Hugh	1808	L39	W30	L20	-	W38	L31	2
33 Schleinkoter, Karl	1905	W16	W39	L17	L18	L13	-	2
34 Purcell, Michael	Unr	W42	D5	L6	L15	L11	D36	2
35 Marmorstein, H	1480	L8	W42	L12	W37	L7	L25	2
36 Bell, Daniel	1101	L18	W22	D15	L28	L26	D34	2
37 Smith, F. Purcell	1436	L4	L28	W42	L35	W41	L21	2
38 Greenberg, Steven	1600	W43	D9	L5	L16	L32	L24	1½
39 Palatita, Peter	1410	W32	L33	L18	L11	D31	L29	1½
40 Bogus, Howard	1311	D13	L19	L16	D25	L30	D41	1½
41 Goldinger, Andrew	880	L21	L11	Bye	L22	L37	D40	1½
42 Ost, David	1004	L34	L35	L37	L30	L24	W43	1
43 Ost, Edward	1091	L38	L20	L22	L31	L25	L42	0
44 Yaurc, Christopher	1571	L2	L14	Withdrew	-	-	-	0

Player	RTNG	Rd1	Rd2	Rd3	Rd4	Rd5	Rd6	TOT
1 Sigmond, Robert	1168	W20	W6	L2	W17	W8	W3	5
2 Jiles, Kevin	1370	W15	D3	W1	W5	W11	L4	4½
3 Washington, John	1234	W27	D2	W24	W11	W6	L1	4½
4 Mack, Edward	1328	W25	D19	D17	D18	W13	W2	4½
5 Green, Benjamin	1351	W23	D17	W19	L2	D7	W12	4
6 Graham, George	1348	W26	L1	W14	W12	L3	W7	4
7 Sigmond, Larry	Unr	W9	L11	W21	W13	D5	L6	3½
8 Miller, Louis	Unr	L12	W23	W15	W24	L1	D9	3½
9 Faulkner, Frank	1242	L7	L18	W26	W15	W14	D8	3½
10 Frederick, Steven	1167	L13	L14	W27	W19	D17	W18	3½
11 Tonkinson, John	1300	W18	W7	W12	L3	L2	-	3
12 Daskus, Leonard	1233	W8	W13	L11	L6	W18	L5	3
13 Baldwin, Frank	1377	W10	L12	L18	W25	L4	W17	3
14 Leftwich, Andre	729	L21	W10	L6	W23	L9	W26	3
15 Gilbert, Alan	1148	L2	W27	L8	L9	W19	W25	3
16 Barrentine, Jess	1261	L19	L25	L23	W26	W24	W21	3
17 Freiberg, Joseph	1011	W28	D5	D4	L1	D10	L13	2½
18 Green, Alvin	1030	L11	W9	W13	D4	L12	L10	2½
19 Costigan, Andrew	962	W16	D4	L5	L10	L15	W20	2½
20 Flaherty, Kyran	Unr	L1	W26	W25	L7	L22	L19	2
21 Palatita, Waldemar	1259	W14	L24	L7	L22	W23	L16	2
22 Bogus, Howard	1311	-	-	-	W21	W20	L23	2
23 Jiles, Timothy	1136	L5	L8	W16	L14	L21	W22	2
24 Robinson, Richard	1369	Bye	W21	L3	L8	L16	-	1½
25 Moore, Jeffrey	1089	L4	W16	L20	L13	D26	L15	1½
26 Newman, Ed	1108	L6	L20	L9	L16	D25	L14	1½
27 Stevens, Nick	Unr	L3	L15	L10	-	-	-	0
28 Carmichael, Anthony	1272	L17	Withdrew	-	-	-	-	0

WEST VIRGINIA CHESS CHAMPIONSHIP Charleston, WV. September 1-3, 1979

Player	RTNG	Rd1	Rd2	Rd3	Rd4	Rd5	Rd6	TOT
1 Paul Harless	1985	W18	W44	D16	W12	W5	W4	5½
2 Donald W Griffith	1902	W31	D21	W22	W6	W11	W8	5½
3 David F Marples	1735	W52	W25	L8	W24	W13	W9	5
4 D. R. Funkhouser	1958	W24	W15	D6	W16	W8	L1	4½
5 Justin Vane	Unr	W37	D7	W10	W46	L1	W23	4½
6 Mark S Hathaway	1807	W39	W26	D4	L2	W31	W15	4½
7 Robert F Bukovac	1671	W38	D5	D21	W22	W23	D10	4½
8 Marvin R Barker, Jr	1833	W14	W13	W3	W9	L4	L2	4
9 Patrick C Kelly	1744	W19	W28	W11	L8	W12	L3	4
10 Dr. C.C. Nolasco	1896	W28	D18	L5	W19	W17	D7	4
11 Mark J. Smith	1847	W41	W40	L9	W42	L2	W24	4
12 Andy J. Katz	1692	W49	W50	W23	L1	L9	W28	4
13 Andrew J. Glancy	1617	W53	L8	W32	W35	L3	W27	4
14 Ack Morgan II	1166	L8	W53	L15	W48	W22	W21	4
15 Vernon M Hart	1644	W36	L4	W14	D31	W16	L6	3½
16 Gary D Cummings	1824	W32	W33	D1	L4	L15	W31	3½
17 Don C Harrold	-	-	W21	W26	W21	L10	D18	3½
18 Jeff E Bohn	1320	L1	D10	W34	D40	W35	D17	3½
19 S. Canterbury	883	L9	W20	D40	L10	W43	W37	3½
20 Edward R Andrews	1472	D34	D19	L35	W47	W36	W25	3½
21 Brett M Thompson	1668	W29	D2	D7	L17	W26	L14	3
22 Tracy Perkins	1279	W17	W30	L2	L7	L14	W39	3
23 Charles W Szasz	1827	W51	W42	L12	W37	L7	L5	3

	Player	RTNG	Rd1	Rd2	Rd3	Rd4	Rd5	Rd6	TOT
24	Jerry L Engle	1265	L4	W38	W47	L3	W37	L11	3
25	Charles R Anderson		W46	L3	L30	W44	W42	L20	3
26	Reginald L Best	1272	W47	L6	L17	W49	L21	W36	3
27	Charles M H Jones	1234	L50	W29	L46	W39	W40	FL13	3
28	Glenn W Harshberger								
		1204	L10	L9	W52	W38	W33	L12	3
29	Sam W Swanson	781	L21	L27	L39	W51	W48	W41	3
30	Pat N Radcliff	1800	W43	L22	W25	W33	-	-	3
31	Wietold Sieradzki	1258	L2	W49	W50	D15	L6	L16	2½
32	Charles Mitchell	951	L16	W45	L13	L36	W38	D33	2½
33	Jerry W Skeen	1378	W35	L16	W48	L30	L28	D32	2½
34	Edwin L Smith	--	D20	L46	L18	L43	Bye	W35	2½
35	David Wilson	--	L33	W43	W20	L13	L18	L34	2
36	Mark D Harless	564	L15	W41	L42	W32	L20	L26	2
37	Robert L Stewart	1420	L5	W52	W44	L23	L24	L19	2
38	Robert Justice II	782	L7	L24	W41	L28	L32	W47	2
39	James G Tuttle	898	L6	L47	W29	L27	W49	L22	2
40	W Brent Haynes	1550	W48	L11	D19	D18	L27	-	2
41	Jeff B Coulter	1200	L11	L36	L38	W45	W47	L29	2
42	Timothy K Davis	1448	W45	L23	W36	L11	L25	-	2
43	Thomas L Degan	897	L30	L35	D45	W34	L19	D44	2
44	Mike E Roush	256	Bye	L1	L37	L25	D45	D43	2
45	Richard K Taylor		L42	L32	D43	L41	D44	W48	2
46	John Evert Roush	1852	L25	W34	W27	L5	-	-	2
47	Ronald C McGuire	--	L26	W39	L24	L20	L41	L38	1
48	Roger L Bailey	379	L40	Bye	L33	L14	L29	L45	1
49	Andrew C Finley	816	L12	L31	W51	L26	L39	1	
50	Nick R Mues	--	W27	L12	L31	Withdrew	1		
51	David S Goosman	982	L23	L17	L49	L29	-	-	0
52	David T Fontalbert	850	L3	L37	L28	Withdrew	0		
53	Berry J. Barnette	480	L13	L14	Withdrew	0			



ORRIE'S PERM PALACE #2 Philadelphia, Pa. October 20-21, 1979

Player	RTNG	Rd1	Rd2	Rd3	Rd4	Rd5	Rd6	TOT
1 Baczynskij, Boris	2305	W5	W9	W4	W2	-	-	4
2 Potts, Ken	2062	W6	W10	W11	L1	-	-	3
3 Gist, Robert	2035	W7	L11	W8	W6	-	-	3
4 Szendroi, R.	2011	W8	W17	L1	W11	-	-	3
5 Thompson, Don	1803	L1	W13	W9	D7	-	-	2½
6 Kinsler, George	1764	L2	W18	W10	L3	-	-	2
7 Adamik, Tom	1732	L3	W14	W12	D5	-	-	2½
8 Daniels, Howard	1684	L4	W16	L3	W17	-	-	2
9 Davis, Rick	1682	W14	L1	L5	L18	-	-	1
10 Marmorstein, H.	1480	W15	L2	L6	L14	-	-	1
11 Rayfield, Marvin	1476	W16	W3	L2	L4	-	-	2
12 Jiles, Kevin	1370	L17	W15	L7	W16	-	-	2
13 Green, Ben	1351	D18	L5	L16	L15	-	-	1½
14 Graham, George	1348	L9	L7	W15	W10	-	-	2
15 Bogus, Howard	1311	L10	L12	L14	W13	-	-	1
16 Carmichael, A.	1272	L11	L8	W3	L12	-	-	1
17 Vansardale, David	Unr	W12	L4	L18	L8	-	-	1
18 Feinstein, Mike	Unr	D13	L6	W17	W9	-	-	2½

Player	RTNG	Rd1	Rd2	Rd3	Rd4	Rd5	Rd6	TOT
1 Rucker, Greg	1355	W13	W15	D7	W4	-	-	3½
2 Bogus, Howard	1311	W14	W19	L11	L23	-	-	2
3 Faulkner, Frank	1242	L15	L20	W27	L18	-	-	1
4 Allen, Michael	1200	W17	D23	W25	L1	-	-	2½
5 Rivers, James	1139	D18	W16	L23	L25	-	-	1½
6 Jiles, Tim	1136	L19	L14	W17	W16	-	-	2
7 Ost, Ed	1091	L20	W22	D1	L11	-	-	2½
8 Moore, Jeffrey	1089	W21	L25	W15	L9	-	-	2
9 Williams, Ted	1070	L22	W24	W19	W8	-	-	3
10 Eways, Musa	1073	L23	Withdrew	-	-	-	-	0
11 Vegparian, Garen	1044	W24	W18	W2	W7	-	-	4
12 Green, Alvin	1030	L25	W17	L20	W24	-	-	2
13 Sharp, Homer	1016	L1	L21	L24	L17	-	-	0

Player	RTNG	Rd1	Rd2	Rd3	Rd4	Rd5	TOT
14 Ost, David	1004	L2	W6	W21	L20		2
15 Simon, Rodney	958	W3	L1	L8	W22		2
16 Lewis, Dan	723	L26	L5	Bye	L6		1
17 Sweeney, Charles	Unr	L4	L12	L6	W13		1
18 Sauer, Mike	Unr	D5	L11	W22	W3		2½
19 Miller, Louis	Unr	W6	L2	L9	W27		2
20 Jones, Richard	Unr	L7	W3	W12	W14		3
21 Dean, James Jr	Unr	L8	W13	L14	W26		2
22 Davis, Neal	New	W9	L7	L18	L15		1
23 Smith, Brian	New	W10	D4	W3	W2		3½
24 LaSpada, Albert	New	L11	L9	W13	L12		1
25 Novatielli, Dominic	Unr	W12	W8	L4	W5		3
26 Riddle, Ira Lee	1111	W16	-	-	L21		1
27 Cohen, Mike	496	-	-	-	L3	L19	0

FLORIDA STATE CHAMPIONSHIP

September 1-3, 1979

OPEN DIVISION

Player	RTNG	Rd1	Rd2	Rd3	Rd4	Rd5	Rd6	TOT
1 Denker, Arnold	2346	W20	W37	W17	W2	W5	W6	6
2 Carswell, George	2165	W34	W38	W13	L1	W9	W5	5
3 Small, Greg	2208	W40	W15	W18	W7	L6	W17	4½
4 Moore, Bobby G. Jr.	2042	W29	L39	W22	W21	D10	W12	4½
5 Gonzalez, Juan	2281	W31	W24	W12	W6	L1	L2	4
6 Shocron, Ruben	2262	W14	W11	W28	L5	W3	L1	4
7 Mardandrea, John P.	2130	W36	D18	W15	L3	D14	W17	4
8 Cornwell, William	2137	W18	W28	W11	W20	D12	D10	4
9 Bond, Robert	2075	W19	L13	W16	W19	L2	W18	4
10 Sanders, Gary	2103	L13	W25	W16	W19	D4	D8	4
11 Rabinowitz, Stuart	1938	W32	L6	L8	W29	W23	W19	4
12 Vuille, Charles	2056	W23	W26	L5	W13	D8	L4	3½
13 Fernandez, Ivan	1835	W10	W9	L2	L12	W20	D14	3½
14 Buel, Eric	1958	L6	W34	W26	D17	D7	D13	3½
15 Musgrove, Charles	1954	W33	D3	L7	L23	W21	W25	3½
16 Kurucz, Peter	1862	W39	L17	L10	L26	D25	W24	3½
17 Brummer, David	2111	W22	W16	L1	D14	D18	L3	3
18 Pereira, Jacinto	1933	W30	D7	L3	W24	D17	L9	3
19 Goins, Steven	1819	L9	W30	W37	L10	W31	L11	3
20 Collins, Leroy G.	1918	L1	W29	W39	L8	L13	W23	3
21 Rand, Vern C. Jr.	1613	L37	W31	W1	L4	L15	W30	3
22 Solomon, Eric	1862	L17	W32	L4	W27	W7	L7	3
23 Ardaman, Miles	1818	L12	W35	D24	W15	L11	L20	2½
24 Stiers, Thomas	2023	W25	L5	D23	L18	W33	L16	2½
25 Shockey, George H. Jr.	1721	L24	L10	W35	W36	D16	L15	2½
26 Cline, Hugh	1447	W1	L12	L14	L16	D29	W33	2½
27 Patterson, David L.	1416	L38	W40	L31	L22	W34	D29	2½
28 Giovanis, Drew T.	1925	W35	L8	L6	L9	LF	-	2
29 Solomon, Mark	1793	L4	L20	W32	L11	D26	D27	2
30 Norins, Robert	Unr	L18	L9	L34	W32	W35	L21	2
31 Storch, Larry	1901	L5	L21	W27	W34	L19	-	2
32 Klug, Harry	1055	L11	L22	L29	L30	Bye	WF	2
33 Newell, Hugh	1305	L15	L36	D40	W35	L24	L26	1½
34 Carpenter, Douglas	1731	L2	L6	W30	L31	L27	LF	1
35 Blanchard, Jeffery	Unr	L28	L23	L25	L33	L30	Bye	1
36 Davidson, Jon	1874	L7	W33	L9	L25	-	-	1
37 Gavora, John	1980	W21	L1	LF	-	-	-	1
38 Chan, Santiago	1979	W27	L2	LF	-	-	-	1
39 Dukes, David	2120	L16	W4	L20	-	-	-	1
40 Rosenthal, Eric	1891	L3	L27	D33	-	-	-	1
41 Benham, Thomas	LF	-	-	-	-	-	-	0
42 Salomon, Miguel	LF	-	-	-	-	-	-	0

AMATEUR DIVISION

1 Concini, John	1653	W34	W20	W9	D7	W11	D2	5
2 Sergeon, Andre	1806	D11	W22	W26	W8	W3	D1	5
3 Clemenson, E.B.	1489	W6	W15	D16	W12	L2	W14	4½
4 Morash, John	1839	W32	-	W19	W16	D9	D6	4½
5 Eastwood, R.C.	1809	W29	L8	W32	W10	D7	W11	4½
6 Carr, John	1741	L3	W39	W21	W29	W13	D4	4½
7 Foutch, Robert H.	1784	W39	W23	D12	D1	D5	D8	4
8 Sals, Bradley	1598	W35	W5	D13	L2	W16	D7	4
9 Gainer, Paul	1785	W14	W17	L1	W15	L4	W18	4
10 King, Jay	1685	L27	WF	W20	L5	W12	W17	4
11 Schoonmaker, Nicholas	1561	D22	W34	D31	W13	L1	L5	3½
12 Persante, Robert	1632	W33	W22	D7	L3	L10	W24	3
13 Bevner, Lawrence	1677	W30	W19	D8	L11	L6	W23	3½
14 Goodman, Michael H.	1647	L9	W34	D17	W23	W26	L3	3½
15 Bellome, Nicholas	1666	W36	L3	W27	L9	D21	W25	3½
16 Petsch, Francis D.	1644	WF	W27	D3	L4	L8	D21	3
17 Quinn, Gregory	1627	W38	L9	D14	D18	W20	L10	3
18 Newton, Bruce	1595	D22	L2	W37	D17	W28	L9	3
19 Small, David	1571	W37	L13	L4	W24	L23	W28	3
20 Ambrosio, Alexander	1480	WF	L1	L10	W32	L17	W30	3
21 Tannebaum, Michael	1611	L31	W28	L6	W33	D15	D16	3
22 VanDerHeyden, Kent	1842	D18	L12	D23	W27	W29	-	3
23 Payne, James	1630	Bye	L7	D22	L14	W19	L13	2½
24 Laine, Robert L.	Unr	D25	L11	W38	L19	W27	L12	2½
25 Mookas, Thomas	1608	D24	WF	L30	L26	W32	L15	2½
26 Randolph, James L.	1631	W28	D31	L2	W25	L14	-	2½
27 Cruz, Juan	1476	W10	L16	L15	L22	L24	W32	2
28 Whitley, Robert W.	682	L26	L21	W34	W30	L18	L19	2
29 Piloneo, C. Perry	1570	L5	W38	WF	L6	L22	-	2
30 Barton, Paul	1457	L13	D37	L25	L28	WF	L20	1½
31 Hallman, Donald	1749	W21	D26	L11	-	-	-	1½
32 Kulak, Henry	1576	L4	W33	L5	L20	L25	L27	1
33 Ramos, Paulo	1055	L12	L32	W39	L21	-	-	1
34 Brown, John E.	1333	L1	L14	L28	Bye	LF	-	1
35 Yehl, John	1846	L8	WF	LF	-	-	-	1
36 Tamen, Alan	1340	L15	-	-	W38	-	-	1
37 Oneby, William	1831	L19	D30	L18	-	-	-	1
38 Mitchell, Paul	1579	L17	L29	L24	L36	-	-	0
39 Stone, Donald	1549	L7	L6	L33	-	-	-	0
40 Berning, Cyane	1319	LF	LF	-	-	-	-	0
41 Warcell, Ben	1721	LF	Withdrew	-	-	-	-	0

RESERVE DIVISION

1 Palms, Robert	1401	W70	W17	W19	W12	W10	D2	5½
2 Noden, David	1342	W69	W29	W38	W11	W18	D1	5½
3 Wheatland, S.W.	1451	W22	W66	W5	D18	W7	D4	5
4 Williams, Christopher	1390	W45	D7	W63	W8	W12	D3	5
5 Williams, Mark	1084	W71	W20	L3	W53	W16	W11	5
6 Martorana, Anthony	1262	L18	W47	W36	W31	W26	W10	5
7 Rodriguez, Robert	Unr	W37	D4	W23	W21	L3	W19	4½
8 Crill, Steven	1330	W39	D62	W49	L4	W23	W18	4½
9 Hollister, Gregory	1208	L12	W68	D20	W60	W28	W29	4½
10 Kerkes, Ira	Unr	WF	W14	W31	W26	L1	L6	4
11 Winkelpieck, Mark	1488	W61	W43	W27	L2	W13	L5	4
12 Cox, Dennis	1533	W9	W15	W13	L1	L4	W33	4
13 Darzi, Michael	1390	W47	WF	L12	W30	L11	W32	4
14 Cantrell, Gilbert	1409	W52	L10	W24	D22	D32	W34	4
15 Chung, Luke	1345	W46	L12	W61	D19	D29	W26	4
16 Dutka, Francis	1450	L30	W58	W51	W40	L5	W27	4
17 Harris, Donald P.	Unr	W57	L1	L40	W51	W37	W44	4
18 Miller, M. John Jr.	1547	W6	W53	W28	D3	L2	L8	3½

Player	RTNG	Rd1	Rd2	Rd3	Rd4	Rd5	Rd6	TOT
19 Foust, Mike	1541	W33	W21	L1	D15	WF	L7	3½
20 Parsons, Marvin	1422	W64	L5	D9	W41	D22	D24	3½
21 Fillensworth, Floyd	1350	W56	L19	W34	L7	W30	D22	3½
22 Ruffin, Gwendolyn	1104	L3	W39	W57	D14	D20	D21	3½
23 Dibitonto, Steve	1432	D49	D44	L7	W48	L8	W45	3½
24 Hernandez, Michael	1200	L29	W59	L14	W39	WF	D20	3½
25 Garland, Greg E.	1457	L50	LF	W33	D61	W46	W40	3½
26 Wickersham, Larry	1454	W32	W40	W30	L10	L6	L15	3
27 McElmore, James	1295	W55	W36	L11	L38	W48	L16	3
28 Toifal, Ronald	1431	W58	W50	L18	D32	L9	D35	3
29 Derringer, Harry	1517	W24	L2	W42	D43	D15	L9	3
30 Pierce, Lance	1100	W16	W67	L26	L13	L21	W55	3
31 Nahas, Clifford	1442	W48	W42	L10	L6	L33	W41	3
32 Smith, E. Brooks	1106	L26	W55	W35	D28	D14	L13	3
33 Ash, James	1238	L19	W69	L25	W52	W31	L12	3
34 Stark, John B.	1128	L62	W63	L21	D36	WF	L14	3
35 Us, Natasha	1332	W59	L38	L32	W50	WF	D28	3
36 Turritt, Bob	1459	W41	L27	L6	L34	W59	W48	3
37 Barker, Ron	1311	L7	W45	L48	W56	L17	W49	3
38 Miller, David	1509	W54	W35	L2	W27	-	-	3
39 Gutheim, Gary	Unr	L8	L22	W65	L24	W56	W52	3
40 Thompson, Carl	1295	W60	L26	W17	L16	D44	L25	2½
41 Skinner, Dan	1285	L36	W52	D60	L20	W50	L31	2½
42 Gorris, John	1278	WF	L31	L29	D45	D49	D47	2½
43 Miller, Rodger	1339	W63	L11	W50	D29	LF	-	2½
44 Damey, Michael	1549	LF	L23	W55	W49	D40	L17	2½
45 Farkash, Eugene	Unr	L4	L37	W68	D42	W54	L23	2½
46 Alonso, Julio	Unr	L15	L61	W64	W66	L25	D50	2½
47 Clark, Julie	New	L13	L6	W70	L57	W51	D42	2½
48 Morris, Edward	1065	L31	W65	W37	L23	L27	L36	2
49 Rozeman, E.H.	1061	D23	W71	L8	L44	D42	L37	2
50 Robbins, Ronald	1108	W25	L78	L43	D35	L41	D46	2
51 Kalnajs, Alfred	1250	LF	W56	L16	L17	L47	W63	2
52 Ziemba, Nonen	895	L14	L41	WF	L33	W63	L39	2
53 Abel, Homer	1363	W68	L18	W66	L5	LF	-	2
54 Colmorgen, John	1137	L38	L60	D59	W65	L45	D58	2
55 Souce, Jim	Unr	L27	L32	L44	W68	WF	L30	2
56 Smith, Dwayne	New	L21	L51	W58	L37	L39	WF	2
57 Goodman, Adolph	1324	L17	W64	L22	W47	LF	-	2
58 Moore, Paul	755	L28	L16	L56	L39	W64	D54	1½
59 Goff, John	Unr	L35	L24	D54	W58	L36	-	1½
60 Stecher, Pete	Unr	L40	W54	D41	L9	-	-	1½
61 Brown, Merritt	1133	L11	W46	L15	D25	LF	-	1½
62 Blumenthal, Leon	1484	W34	D8	-	-	-	-	1½
63 Di Persio, Kenneth	Unr	L43	L34	L4	W64	L52	L51	1
64 Connell, Laurie	927	L20	L57	L46	L63	L58	W68	1
65 Allman, John B.	1320	LF	L48	L39	L42	W68	LF	1
66 Everett, Glenn	1161	WF	L3	L53	L46	LF	-	1
67 Mercer, Tom	1428	W51	L30	-	-	-	-	1
68 Lippert, Wanda	New	L53	L9	L45	L55	L65	L64	0
69 Coney, Ernie	Unr	L2	L33	LF	-	-	-	0
70 Redway, Frankie III	569	L1	-	L47	-	-	-	0
71 Buckman, Henry	1448	L5	L49	-	-	-	-	0
72 Eleanor, Terry	1512	LF	-	-	-	-	-	0

BEGINNERS DIVISION

1 Robert Joyce	W22	W4	W9	W3	4
2 John B. Cornett	D8	W5	W16	W10	3½
3 Gerhard Boerner	W14	W7	W6	L1	3
4 Jerry Wilson	W17	L1	W12	W11	3
5 Mike Passo	W15	L2	W8	WF	3
6 James A. Grandoff	W10	W12	L3	D7	2½
7 Kelly Wells	W11	L3	W17	D6	2½
8 Ernest Schukat	D2	W20	L5	W16	2½
9 James Thobe	W13	W16	L1	LF	2
10 Harry Ball	L6	W21	W18	L2	2
11 John DeMassimo	L7	W14	W21	L4	2
12 Kevin Wells	W21	L6	L4	W22	2
13 Barbara Counts	L9	L17	W21	W20	2
14 Dan Jones	L3	L11	W22	W21	2
15 Stefanie Gilbert	L5	W21	W20	-	2
16 James McCourt	W18	L9	L2	L8	1
17 Gordon Gilbert	L4	W13	L7	-	1
18 Benjamin Gilbert	L16	W22	L10	-	1
19 Steve Franklin	L12	L10	L13	W23	1
20 Margaret Abel	D21	L8	L15	L13	½
21 Terry Brackins	D20	L15	L11	L14	0
22 Arlyn Brown	L1	L18	L14	L12	0
23 Frankie Redway, III	-	-	-	L19	0

Save on New Books!

That is what our members do all of the time, as the Chess Book Club is consistently "First With the Best". We are now accepting orders for the following titles, each book so spanking new that this ad may well be the first time you've heard of it's becoming available.

COMPREHENSIVE CHESS OPENINGS

by YAKOV ESTRIN and VASILY PANOV

This decisive and distinguished work, now in its fifth revised edition in the USSR and translated previously into Hungarian and Spanish, is at last available to the English-speaking chess enthusiast! We feel certain that CCO is destined to become the next "openings bible" for American players. To be published as three volumes in early 1980. Volume 1 - All those openings which arise after 1 P-K4 P-K4; Volume 2 - Where Black replies to 1 P-K4 with something other than 1 P-K4; Volume 3 - Where White begins with any move except 1 P-K4. Order from us now and your books will be mailed directly to you by the publisher, from London, as each Volume is printed and bound. You will get them before your usual book dealer even sees his review copies!

	Hard- <u>cover</u>	Paper <u>-back</u>
If you wait until 1980 and purchase all three volumes separately at List Prices, the total is	\$57.50	\$36.85
CBC Members Prepublication Special Price for		
the 3-Volume Set on orders postmarked not later		
than December 31, 1979.....	<u>38.50</u>	<u>24.75</u>
<u>Don't delay...order today...and you Save 1/3!</u>		

A COMPLETE DEFENCE TO 1 P-K4, Second (Revised) Edition A Study of Petroff's Defence

by Bernard Cafferty and David Hooper

Copyrighted 1979. Considerably revised and expanded to reflect developments in actual competition plus updated analysis since the first edition appeared ten years ago. List Price...\$14.00 \$8.00

Ready for shipment now. CBC Members Price..... 11.25 6.75

CATASTROPHE IN THE OPENING

by Iakov Neishtadt, Editor-in-Chief of "64"

Take advantage of opening inaccuracies by your opponents--and avoid making mistakes yourself! Algebraic Notation, 219 diagrams.

Estimated Publication Date	List Price.....	\$15.00	\$9.00
is the end of this month.	Members Price....	12.25	7.75

Not yet a member of the Chess Book Club? Usual one-time cost is \$3.00; just \$2.50 to readers of this magazine until December 31. Membership includes the newsletter CHESSBOOKNOTES. Please send check or money order to: E. B. Edmondson, 47-169A Hui Akepa Pl, Kaneohe, HI 96744.

NC CLOSED CHAMPIONSHIP
September 1-3 1979
CHAPEL HILL, NC

Player	RTNG	Rd1	Rd2	Rd3	Rd4	Rd5	Rd6	TOT
1 David Steele	2115	W10	W3	W6	W4	D2	D7	5
2 Greg Samsa	2192	W9	W17	D15	W7	D1	D3	4½
3 Maurice Dana	1937	W12	L1	W13	W15	W6	D2	4½
4 Robert Streeter	1935	D13	W11	W14	L1	W8	D6	4
5 Charles Alden	2014	D11	L15	L9	Bye	W14	W12	3½
6 Jim Watson	1986	W7	W16	L1	W12	L3	D4	3½
7 Ronald Simpson	1781	L6	W10	W17	L2	W16	D1	3½
8 Alfredo Cruz	2016	L16	D13	D11	W14	L4	W15	3
9 Chris O'Connell	1894	L2	L14	W5	D10	D11	W16	3
10 DUCHESS 6	1889	L1	L7	Bye	D9	W17	D11	3
11 Bruce Wright	1806	D5	L4	D8	W13	D9	D10	3
12 Robert Spurrier	1669	L3	Bye	W16	L6	W15	L5	3
13 Neal Harris	1611	D4	D8	L3	L11	Bye	W17	3
14 Lee Taylor	2098	D15	W9	L4	L8	L5	Bye	2½
15 Terry Newman	1859	D14	W5	D2	L3	L2	L8	2
16 Chris Kramer	1815	W8	L6	L12	W17	L7	L9	2
17 Ron Gray	1457	Bye	L2	L7	L16	L10	L13	1

NC AMATEUR CHAMPIONSHIP

1 Joseph Sims	1656	L7	W13	D11	W15	W3	W5	4½
2 Glenn Evans	1470	L3	W12	W6	W4	D5	W8	4½
3 James Hardy	1703	W2	W6	W7	W5	L1	L4	4
4 William Dotson	1680	W9	L8	W16	L2	W7	W3	4
5 Ray Freeman	1760	W11	W16	W8	L3	D2	L1	3½
6 Dennis Roberts	1617	W12	L3	L2	W11	W9	D7	3½
7 David Baldwin	1468	W1	W15	L3	W8	L4	D6	3½
8 Patsy Newman	1512	W14	W4	L5	L7	W15	L2	3
9 Kevin Chester	1468	L4	W14	L15	W10	L6	W11	3
10 Arnold Tharrington	1413	L16	L11	W13	L9	W14	W15	3
11 George Harwell	1498	L5	W10	D1	L6	W12	L9	2½
12 Mitch Gillespie	1429	L6	L2	W14	D13	L11	W22	2½
13 Clyde Davis	1361	D15	L1	L10	D12	Bye	L14	2
14 Milton Fields	1234	L8	L9	L12	Bye	L10	W13	2
15 Gregory Bolduc	1563	D13	L7	W9	L1	L8	L10	1½
16 Ricky Bailey	1602	W10	L5	L4	Withdrawn			1

RAM V
September 15, 1979

1 Greg Samsa	2192	W4	D2	W3				2½
2 Lee Taylor	2098	D3	D1	D4				1½
3 Chris Kramer	1815	D2	W4	D1				1½
4 Randy Grim	Unr	L1	L3	D2				½
5 Kevin Chester	1468	W10	D6	W7				2½
6 Stephen Cohen	1610	W9	D5	D10				2
7 Ron Gray	1457	W12	W11	L5				2
8 Clyde Davis	1361	D11	W10	WD				1½
9 David Baldwin	1468	L6	W12	WD				1
10 Oscar Nothnagle	1554	L15	L8	D6				½
11 Glenn Evans	1470	D8	L7	WD				0
12 Robert Smith	1492	L7	L9	WD				0
13 Daniel McKeithen	1174	W16	W17	W14				3
14 George Melton, Jr.	1300	W18	W15	L13				2
15 Jabulani Banjoko	1052	W19	L14	W17				2
16 Steve Uhl	1037	L13	W20	W18				2
17 Thomas Allen	1335	W20	L13	L15				1
18 Louis Cobb	1059	L14	W19	L16				1
19 Tom Galloway	1195	L15	L18	WD				0
20 Brad Taylor	1082	L17	L16	WD				0
21 Alireza Shahin	Unr	W28	W25	W23				3
22 Tony Magee	976	L23	W24	W26				3
23 Francis Corr	Unr	W22	W26	L21				2
24 Jerry Sheppard	Unr	L25	L22	W27				1
25 Phillip Jackson	Unr	W24	L21	WD				1
26 Marvin Weaver	Unr	W27	L23	L22				1
27 Paul Hubbard	Unr	L26	Bye	L24				0
28 Pete Kelly	973	L21	WD					0

NC RESERVE CHAMPIONSHIP

1 Randy Grim	Unr	W6	W18	W3	W17	W7	W4	6
2 Danny McKeithen	1174	W8	L3	W22	W18	W9	W7	5
3 Thomas Allen	1335	W12	W2	L1	W19	L4	W8	4
4 David Antczak	1318	W15	W16	L7	W5	W3	L1	4
5 Alan Goodman	1223	W22	W17	L9	L4	W15	W12	4
6 Jackie Ryan	1190	L1	L21	W14	W13	W16	W9	4
7 Jerry Sheppard	Unr	W23	W10	W4	W9	L1	L2	4
8 Tom Magee	Unr	L2	D14	W23	W16	W17	L3	3½
9 Phillip Busby	1331	W14	W13	W5	L7	L2	L6	3
10 William Foster	1258	W20	L7	L16	L15	W22	W11	3
11 Louis Cobb	1059	L17	W20	L18	W22	W19	L10	3
12 Alan Patrick	1051	L3	L22	W20	W21	W18	L5	3
13 David Cheng	977	Bye	L9	L17	L6	W20	L18	3
14 Steve Uhl	1037	L9	D8	L6	L20	W21	W19	2½
15 Shu-Hing Peng	1016	L4	L19	Bye	W10	L5	D16	2½
16 Chris Haig	Unr	W19	L4	W10	L8	L6	D15	2½
17 David Stern	1359	W11	L5	W13	L1	L8	WD	2
18 Paul Carriger	1314	W21	L1	W11	L2	L12	L13	2
19 Joseph Kile	1233	L16	W15	W21	L3	L11	L14	2
20 Frank Corr	Unr	L10	L11	L12	W14	L13	W21	2
21 Tom Poulin	Unr	L18	W6	L19	L12	L14	L20	1
22 Stephanie Simpson	Unr	L5	W12	L2	L11	L10	L12	1
23 Walt Marsh	1081	L7	LF	WD				0

SANDHILLS II
September 9, 1979
SECTION I
Rockingham, N.C.

Player	RTNG	Rd1	Rd2	Rd3	Rd4	Rd5	TOT
1 Terry Newman	1859	W3	W4	D2			2½
2 Bobby Goodyear	1764	D4	W3	D1			2
3 Norman Thabit	1556	L1	L2	Bye			1
4 Stan Vaughan	1999	D2	L1	WD			½

SECTION II

1 Ulf Hellsten	1612	W6	D2	W3			2½
2 Robert Smith	1492	W8	D1	W2			2½
3 Stephen Cohen	1610	W5	D4	L3			1½
4 Patsy Newman	1512	W7	D3	WD			1½
5 Ron Gray	1457	L3	W7	L2			1
6 David Baldwin	1468	L1	W8	WD			1
7 James Hughey	1454	L4	L5	D8			½
8 Lavaughn Hayes	1452	L2	L6	D7			½

SECTION III

1 Arnold Tharrington	1413	D2	W6	W3			2½
2 Will Foster	1258	D1	W8	W5			2½
3 James Myrick	1174	W7	W5	L1			2
4 Alan Goodman	1223	L5	W7	D6			1½
5 Gregory Martin	1408	W4	L3	L2			1
6 Richard Adams	1186	D8	L1	D4			1
7 George Melton	1300	L3	L4	Bye			1
8 Clyde Davis	1361	D6	L2	WD			½

SECTION IV

1 Jerry Sheppard	Unr	W3	W7	W2			3
2 Louis Cobb	1059	W9	W8	L1			2
3 Charles Corbin	1010	L1	W9	W8			2
4 Gary Cook	Unr	W6	L4	W9			2
5 Mark Henderson	Unr	L5	Bye	W4			2
6 Marvin Weaver	Unr	Bye	W5	L6			2
7 Dervin Bright	Unr	L8	Bye	W4			1
8 Darryl Owens	Unr	W7	L2	L3			1
9 Marcia Williams	Unr	L2	L3	L4			0

1979 SUNBELT CLASSIC

Atlanta, Ga. August 4-5, 1979

1. Michael Rohde	Ga	2426	W16	W6	D5	W7	W2	4½
2. James Vermilya	Ga	1922	W24	W13	W19	W4	L1	4
3. Joseph Scott	Ga	1888	W18	L7	W15	W14	W11	4
4. Michael Lucas	Ga	1930	W14	W17	W7	L2	D5	3½
5. Michael Anderson	SC	2030	W8	W11	D1	D6	D4	3½
6. Dave Vest	Ga	1889	W10	L1	W13	D5	W12	3½
7. Curtis Jones	Tn	2147	W23	W3	L4	L1	W15	3
8. David Thistlethwaite	Tn	1776	L5	W13	W21	D12	D10	3
9. John Simmons	Ga	1860	D22	D15	L14	W20	W17	3
10. Brian McCarthy	Tn	1661	L6	W23	D11	WF	D8	3
11. Ulysses Martin	Ga	1830	W12	L5	D10	W19	L3	2½
12. Orlando Rojas	Ga	Unr	L11	W20	W22	D8	L6	2½
13. Ken Mun	SC	1776	W21	L2	L6	W18	D14	2½
14. Don Mullis	Ga	1716	L4	W16	W9	L3	D13	2½
15. Ralph Hawkins	Ga	1721	D19	D9	D2	W16	L7	2
16. Walter Witty	Ga	1795	L1	L14	W23	L15	W19	2
17. Ron Easter	Tn	1486	Bye	L4	L20	W23	L9	2
18. Eric Johnson	Ga	1634	L3	L8	Bye	L13	W23	2
19. Stan Vaughan	SC	1999	D15	W22	L2	L11	L16	1½
20. Mike Bacon	Ga	1720	LF	L12	W17	LF	-	1
21. William Ruiz	Ga	2033	L13	WF	L8	LF	-	1
22. Jay Schneider	Ga	1533	D9	L19	L12	-	-	½
23. Rex Demers	Ma	1779	L7	L10	L16	L17	L18	0
24. Gary Southerland	1710	L2	LF					0

1979 SUNBELT AMATEUR

1 James Tobin	1595	W24	D22	W8	W14	W2	4½
2 John Roberts	1484	W5	W11	W20	W9	L1	4
3 Nicholas Cox	1521	W32	D15	D22	W10	W6	4
4 Paul Deter	Unr	L4	W34	W18	W22	W11	4
5 Jay Guest	Unr	L1	W21	W24	WF	W9	4
6 Clall O. Wood	1510	W6	W29	D14	W15	L3	3½
7 Herbert Owen	1522	W17	L20	D16	W23	W14	3½
8 Paul Brice	1509	D27	W13	L2	W16	W15	3½
9 John White	1328	W23	W18	W19	L22	L5	3
10 Julian Ford	1278	L18	W33	W26	L3	W22	3
11 Arnold Castro	1208	W30	L2	W28	WF	L4	3
12 Bernie Hathcock	1555	W21	L14	L15	W30	W24	3
13 Van Ford	1490	L16	L8	W27	W26	W21	3
14 Allen Campfield	1463	W25	W12	D6	L1	L7	2½
15 Tom Kayma	1413	W28	D3	W12	L6	L8	2½
16 Tommy Friedel	Unr	L13	L19	D7	L8	W30	2½
17 David Campfield	1136	L7	W25	D23	D18	W27	2½
18 Jimmie Holloway	1547	W10	L9	L4	D17	W23	2½
19 James Mingle	1464	W33	W16	L9	LF		2
20 James Rutherford	1423	W34	W7	L2	LF		2
21 Ronald Radford	1275	L12	L5	W25	W31	L13	2
22 Walter Veatch	1461	W26	D1	D3	L4	L10	2
23 Tracy Turner	Unr	L9	W30	W17	L7	L18	2
24 Mark Denner	1323	L1	W27	L5	W28	L12	2
25 Jim Laszby	Unr	L14	L17	L21	Bye	W28	2
26 Edward Murphy	Unr	L22	W31	L10	L13	W32	2
27 Kurt Fanstall	Unr	D8	L24	L11	W34	L17	1½
28 Michael Quinn	Unr	L15	W32	L11	L24	L25	1
29 Scott Ramsey	1350	W31	L6				1
30 Charles Sealock	815	L11	L23	W33	L12	L16	1
31 Roy Stephenson	Unr	L29	L26	W32	L21	W33	1
32 Stanford Arden	Unr	L3	L28	L31	L33	L26	1
33 Sandy King	Unr	L19	L10	L30	L33	W31	1
34 David Post	Unr	L20	L4	LF	L27		0

CONSTITUTION OF THE PENNSYLVANIA STATE CHESS FEDERATION

ARTICLE I - NAME

The name of this organization shall be the Pennsylvania State Chess Federation (PSCF).

ARTICLE II - PURPOSE

The purpose of the PSCF is to promote chess in the Commonwealth of Pennsylvania. This is accomplished by tournaments and the dissemination of information through the PSCF's publications, and any other means deemed advisable.

ARTICLE III - MEMBERSHIP

Membership shall be open to all chess players, clubs, organizations, or other persons wishing to join the PSCF. Dues shall be decided upon by the Executive Board and established as part of the By-Laws.

ARTICLE IV-A - ELECTED OFFICERS

A: The elected officers of the PSCF, along with their duties are:

- 1.) President: ensure smooth operation of the PSCF; preside over the annual meeting; represent the PSCF in dealings with the USCF; disseminate information to members via the publication(s); appoint USCF delegates and alternates; appoint any necessary officers to ensure the running of the PSCF; assume any other necessary duties.
- 2.) Vice-President: preside over PSCF meetings in the absence of the President; succeed to the presidency should a vacancy occur; assume whatever other responsibilities assigned.
- 3.) Secretary: take minutes at any business and Executive Board meetings; prepare minutes of previous meetings; assume office of Vice-President in case of vacancy.
- 4.) Treasurer: manage fiscal matters of the PSCF; maintain all necessary membership records.

B: Term of office shall be two years, with election in even-numbered years at the annual business meeting.

C: An officer may succeed him/herself if so elected.

ARTICLE IV-B - APPOINTED OFFICERS

A: The President shall appoint any officers necessary.

B: Terms of office shall be at the discretion of the President.

C: Such officers are representatives of the PSCF.

D: Such officers may attend Executive Board meetings, but shall not have a vote in matters.

ARTICLE V - MEETINGS

Regular Business meetings shall be held during the time allotted for the State Championships. They shall not be scheduled during playing time. Admission shall be by PSCF membership card.

ARTICLE VI - EXECUTIVE BOARD

A: The Executive Board shall consist of the President, Vice-President, Secretary, Treasurer, and Past President.

B: The Executive Board shall recommend actions to the members present at the annual Business Meeting.

C: The Executive Board shall meet at times scheduled by the President. A quorum shall be 3 members.

ARTICLE VII - COMMITTEES

The President shall establish any necessary committees and appoint their chairman.

ARTICLE VIII - PARLIAMENTARY AUTHORITY

Except where otherwise indicated by this constitution or any By-Laws, Robert's Rules of Order shall be the parliamentary authority.

ARTICLE IX - AMENDMENTS

- A: This Constitution may be amended by a 2/3 vote of those present at a business meeting, or by a 2/3 mail vote of all PSCF members.
- B: By-Laws may be amended by a majority present at a Business Meeting.

BY-LAWS ESTABLISHED

- 1.) Dues shall be as follows:
Juniors (under 19 at expiration), \$4.00
Adults, \$6.00
Organizations, ect., \$6.00
Clubs and other authorized persons may keep 20% commission on adult memberships collected.
- 2.) The State Championship Tournament shall be held over Labor Day Weekend, at a site to be rotated as equitably as possible among the Eastern, Central, and Western parts of the state. The President shall appoint the Chief Director of the tournament and approve of the site selected.
- 3.) The PSCF shall be an affiliate of the USCF.
- 4.) The following committees shall be established as soon as feasible: Scholastic, Publications, Master's Affairs, Financial.
- 5.) If possible, the PSCF shall sponsor other tournaments, e.g., 30/30, Blitz, Team, Scholastic, Elementary.

Summary of the PSCF Business Meeting Sept. 2.

1. Various Reports
2. Next year's state tournament will be held in State College.
3. Pa. Team Tournament-Jan 12-13, 1980, Chey-State College.
4. Bob Dudley was voted a life membership in PSCF for services beyond all reasonable expectations.
5. Elected Officers are given PSCF membership during term(s).
6. We will try to arrange a match vs Ohio.
7. We will pursue formal reciprocity with all states.
8. The Chessman will continue as our official state publication. It is very well liked by the members.)
9. Dues, beginning Jan. 1, 1980, will be \$6.00 and \$4.00.
10. The state championships lost about \$600.00 due to very poor attendance. Our net worth after deducting for future Chessman issues is around \$150.00.
11. Delegates and alternates were chosen:
Delegates: Bobby Fischer, Dave Jaeger, Fra Fee Middle, and Don Thompson.
Alternates: Roland Benoit, Joe Ohler, Edward Bogus, Jess Goodman, John Paul Ferveraux, Boris Raczynsky, Robert Patterson, L.L. Baldrick, Cary Gowers, Tom Magar, Mike Sherman.
Alt. Voting Members: Waldemar Palaitis, Homer Sharp, Chris Laure, Shawn Dwyer, Steve Shutt, Willie Abbey, George Winsler.

The USCF

Sept. 12, 1979
Press Release from USCF

We answer questions every day about our computer difficulties. Players, organizers and other members are understandably interested in the genesis of the problem, the current situation and the prognosis for the months ahead.

The whole process of converting from a time-sharing network to our own in-house computer system has been a nightmare of delays and problems beyond even those expected during installation of a complex computer system.

The first major blow came early. SFCOS, the time-sharing company we had used for several years, suddenly went out of business on March 1, 1979, leaving us without any computer capacity at all. In fact, we had just enough time to produce mailing lists to send Chess Life & Review until our system was operational, and to produce the February-April Rating Supplement.

Because our old system had been programmed in a unique and non-compatible language we could not move our programs from one machine to another, but rather had to completely reprogram the new system. Fortunately, we were able to convert our membership files. Even given expected delays, Compumedia, the consulting firm that is providing the new system, is far behind the schedule they outlined when we signed the contract with them on October 12, 1978. The following chronological sketch should make this clear:

- | | |
|----------|---|
| 10-12-78 | Contract signed. |
| 1-10-79 | Data General Computer should have been delivered. |
| 5-07-79 | Data General Computer actually arrived in New Windsor. |
| 5-12-79 | All programming and documentation scheduled to be fully operational. |
| 5-21-79 | Initial Hardware problems were corrected. |
| 5-23-79 | First processing of new members. We had no other systems operational at this point. |
| 7-02-79 | Main membership files were operational; rating systems had not been started at this point. |
| 7-12-79 | First version of a tournament entry program was operational. We started entering January tournaments. |
| 7-24-79 | Programs for the production of membership cards and labels for weekly mailing of magazines to new members were operational. |
| 8-14-79 | Validation and Editing programs for tournaments were operational. We were then able to check cross-tables for errors and correct them in preparation for rating them. |

What everyone hopes is the last blow was delivered in early September when our programmer was taken seriously ill. It seems she will not be able to complete the project. Currently, Compumedia is looking for a suitable replacement for her. It might take some weeks for a programmer, once found, to catch up on the work already done. We are, as far as anyone can tell, fairly close to the rating program and a Rating Supplement that everyone is anxiously awaiting. We are working double shifts and weekends to input as much tournament data as possible in preparation for actual rating. But until programming work is resumed, there is no way to reasonably predict when that supplement will appear.

Hochberg Resigns

INTERVIEW WITH BURT HOCHBERG
By Helen Warren

Reprinted from 11 Chess Bulletin, September, 1979.

Helen Warren: You are what we might call "The Survivor." The senior staff, yourself excluded, resigned as one last year. How did you manage to survive for 13 years at a job with little real security?

Burt Hochberg: I never thought about survival—all I wanted was to get the job done. I survived, I suppose, because my readers and superiors liked my work and let me do it. Martin Morrison and the others (Doris Thackrey, Margaret Schwab, Eric Bone, and Jack Battell) reached a point last year when they apparently felt they couldn't do their jobs anymore. I reached that point a year later.

I was very sad when Martin was forced out. He was very harshly treated in his last weeks in New Windsor, and he had to leave to save his self-esteem.

HW: Attractive job opportunities in your field must have arisen more than once over the years. In addition to a new opportunity at RHM, what factors led to your decision to leave CL&R now?

BH: Actually, there aren't many opportunities for an editor to make a decent living exclusively in chess. It was just my good luck that RHM's need for an executive editor coincided with my need to leave CL&R.

I wouldn't have left if I was happy with the new leaders. It isn't fair to blame them entirely—I know I'm arrogant, argumentative, stubborn, opinionated, and all the rest—but Ed Edmondson, who hired me in 1966 and was my boss and my mentor for over 10 years, knew how to harness my "New York arrogance" and still let me know he understood the problems of my job and respected my opinions. So did Martin. The new leaders, evidently under some compulsion to demonstrate their authority, tried to bring me to heel, to make me understand that my new role was to dot the i's and cross the t's and keep my mouth shut, no more and no less. That's not how I saw the editors role, and it's not how I saw mine.

The professional humiliation might have been enough, but there were other factors. I was coerced into making alliances with the "right" people and avoiding the "wrong" ones; I was strongly advised not to attend that gathering, not to speak to that person, not to mention that subject—all in the cause of party politics.

Too many people thought they were my bosses. A certain Policy Board member liked to win arguments by saying, in seriousness, "Is it worth your job?" Another told me, "Ultimately, you know, I'm one of your bosses." Of course, when two bosses gave me conflicting instructions—as they did—chaos resulted, with me in the middle. George Cunningham, with his imperious manner and his Scrooge-like attitude toward some of the staff, brought morale to a new low in his four months as Interim Staff Director. He was followed by Dick Meyerson, a nice guy who was so intimidated by Gary Sperling and so dazzled by conflicting orders that he couldn't function. Dick was very badly used. Then came Gerry Dullea, a close friend of George Cunningham's (they write a newspaper chess column together). Frankly, even today, I don't know who the real boss is.

HW: Some USCF delegates believe that your relationship with Executive Director Dullea was strained or that he and USCF President Gary Sperling made it impossible or at least very uncomfortable for you to continue. Is this true?

BH: I've already mentioned the political interference, the downgrading of the editor's role, and the humiliation I was made to feel. With Gerry a new element was added: distrust. I won't wash my dirty linen in public and I don't want to needlessly offend Gerry Dullea, who is himself in an extremely difficult job and needs a chance to show he's his own man. But after my 13 years at the helm of CL&R, I was profoundly disturbed by some of his actions, which proved to me that I had neither his trust or his confidence. Under those circumstances, sure I was uncomfortable with him—and he's probably with me.

HW: You and Managing Editor Roger Cox worked very well together. Did his resignation have anything to do with your decision, only weeks later, to leave as Editor-in-Chief?

BH: To me, Roger Cox was an irreplaceable mainstay of the magazine. Apart from his considerable skills and generous nature, he had the important advantage of working at home, close to both the typesetter and me. When the salary increase he asked for—a reasonable and full deserved one, in view of his extraordinary accomplishments of the last year—was denied by Executive Director Dullea (who offered him, instead, an increase equivalent to half of last year's inflation rate), Roger told me that he would be moving on. Gerry said that Roger's

successor would have to work in New Windsor, an hour and a half from me and the typesetter. Since manuscripts, illustrations, galleys, revised galleys, page proofs, corrected page proofs, blues, and other material go back and forth all the time—several times a day in peak periods—I didn't think that separating the key production elements would allow the magazine to remain current and first rate at the same time. I knew I couldn't get the job done right if my managing editor worked in a different city.

HW: To what extent, if any, did Sperling control the content of the magazine? Did he ever use presidential fiat to remove something from or insert something into the magazine "over your head"?

BH: One incident that sticks in my mind was the aftermath of the prechess articles last year. Although I'm sure Gary was wrong on the issue, I wouldn't want to characterize his order as improper. The articles had generated an enthusiastic response and I wanted to print some of the letters. Gary, citing the new guideline about chess variants, said there was to be no more prechess. The guideline states, "Priority should be given to coverage of the game of chess, not variants of the game." I argued that "priority" was not "exclusivity" and that such a positive reader response was meaningful and should be recognized as a success for CL&R. Gary, as president, prevailed, and there was no more pre-chess in CL&R. Too bad—the readers loved it.

A more serious matter was his refusal to allow a list of new titleholders to be printed after last year's FIDE Congress in Brazil.

FIDE Secretary Bakker had distributed a list marked "unofficial" but obviously intended for publication—the same type of list CL&R had always used. Gary told me to publish no list since there was no "official" one. My objections were unavailing. In view of Gary's problem with John Fedorowicz's IM title—which was caused by a series of blunders by this administration, not the previous one—I now think that the withholding of the list was to avoid embarrassment.

HW: Some critics of Sperling have charged that he monopolized too much magazine space and in fact used the magazine politically to achieve his own ends. Can you comment on this?

BH: When Gary originally proposed his column to me, he said its purpose would be to report and explain Policy Board actions to the reader. This is reasonable. Although I think the column has strayed somewhat from its original purpose, it's hard to draw a precise line between legitimate presidential use of magazine space and improper use of it for self-serving political ends.

HW: Is your departure in any way related to the guidelines approved in Phoenix last year?

BH: No. I had been asking for guidelines for years, and at Phoenix I got them. I think everybody agrees that Roger and I met them successfully. They aren't perfect, but they clearly express the will of the delegates as to the direction CL&R is to take.

HW: The Illinois delegation in Phoenix pressed hard for a changed magazine. From being among your harshest critics we have become some of your most energetic supporters. From what quarters is criticism of the changed magazine coming—and why?

BH: Critics of the new CL&R complain that there's less chess in it. It's just as I predicted; if you want to add something but don't increase capacity, something will be left out. You can't get two quarts into a one-quart bottle.

HW: In your statement to the delegates in Chicago you suggested that hard content (games, etc.) had been sacrificed for visual appeal. Do you view these as mutually exclusive?

BH: In theory, not necessarily. But since both the budget and the number of pages have been cut in recent years, there must be a reduction in service to the reader, one way or another.

The recent jump in advertising is taking another chunk out of the editorial allotment. My argument that the increased advertising revenue should be used to buy extra pages, to give something back to the reader (who was

just about to be hit with a dues increase), made no impression. The delegates at Phoenix, I said, made it abundantly clear that CL&R was one of their top priorities, and the page-cutting, whether direct or indirect, contravened the wishes of the delegates. In the end, I was told that extra pages was a dead issue, and I was ordered to stop discussing it.

HW: I regard you as among the better three or four chess writers around. Why did you write so little?

BH: That's a very nice compliment from such a master as you. Thanks. I wrote so little because some people thought I wrote too much. But I have some article ideas for CL&R; maybe the new editor will like them.

HW: To what extent did you write Benko's column for him? Granted some columnists require more rewriting than others; is it true that Benko wrote very little at all?

BH: Pal Benko is an excellent theorist and annotator, but he needs help with his English. I tried to improve the expression of his ideas without changing the ideas. That's what I did for everybody.

HW: Walter Browne has not appeared in CL&R's pages for a long time. Is there a boycott in progress here?

BH: Whatever gives you that idea? Browne is not the only one who has not written for CL&R recently. The usual problem is agreeing on the right idea at the right time at the right price. But Walter has refused to let me work on his articles and recently wrote to the Policy Board that he would never work for me again. If he wants to get published, he might find it useful to let the editor help him.

HW: Your cool, even negative remarks about the PCA at the time of its founding looked to some observers as a natural "management" position vis-a-vis "union" members. Did you think membership in the PCA would make it more difficult for you to negotiate contracts with your columnist? How do you now feel about yearly or multi-yearly contracts with CL&R columnists?

BH: I don't recall saying anything negative about the PCA or the idea of a "union" of Professional players. My objection was to a couple of the PCA's founders, who I thought would be the wrong people to lead it. One of them—Larry Evans, the grandmaster from Reno—was then involved in a bitter contract dispute with me, which may have been the cause of some of the silly statements he made.

The editor should stand midway between his writers and his magazine. If he expects his writers to do their best work, he must try to see that they are fairly treated. And if he expects to run his magazine efficiently, he must protect its integrity and its budget. There is a wide area of trust here, and for that reason I think formal contracts should rarely be needed. There are bound to be personality clashes and differences of opinion, but they should not be allowed to disturb a generally trusting relationship.

Since CL&R pays the highest fees in the world and uses so many writers, I wasn't worried about "unionism." The issue that got some of the PCA's founders so exercised two years ago had nothing to do with fees.

HW: Charges of censorship were frequently leveled at you. Will you comment?

BH: It's very easy for a writer whose pet idea has been rejected to assuage his bruised ego by crying censorship. Somebody has to act as a sort of traffic manager—not everything can get published, after all—and as a judge of whether or not a given piece of copy is suitable for the magazine. Disappointed writers in every field typically accuse that person—the editor—of practicing censorship or of being unfair or too stupid to see what a genius the writer is. It comes with the territory.

HW: I think it would be fair to say that even your critics regard you as a strong editor, independent (some say inflexible!), your own man. It appears to some that the present Policy Board, or at least some of its members, as well as the business office, prefer a less independent, more malleable editor. Is this true?

BH: Since the editor's role has been downgraded I doubt they are looking for a strong, independen-

dent editor. But, for CL&R's sake, I hope that is what he or she turns out to be. And I hope he won't be a stalking horse, like poor Dick Meyerson.

HW: What do you consider your most significant contribution to USCF over the past decade? And what was your biggest disappointment?

BH: I'm proudest of the enormous distance CL&R has come in the last decade. Readers who first joined USCF in the early 70's or later don't know what the old Chess Life magazine was like. From an earnest but insignificant house organ with eight or nine thousand readers, it has become a first-class chess magazine representing a federation fifty thousand strong and is respected the world over. Moreover, the generation of young American masters that is now emerging is the largest and strongest in history, and I take some pride in the fact that they were all raised on CL&R.

The disappointment that stands out most clearly at this moment is that I wasn't "strong" enough to maintain the editor's rightful position in the USCF hierarchy under the new leaders. There were other disappointments, of course—I still haven't given up on some of them. HW: What will you be looking for when you receive your first issue of CL&R with a new editor's name?

BH: The new editor's name! As this is written (9/13/79), one day before I leave office, nobody knows who the new editor will be.

HW: Is there anything you would like to add?

BH: Many, many things. In a limited space I could tell only part of the story. Maybe I'll write a book!

I'm eager, of course, to get into my new responsibilities at RHM, and I'm looking forward to enjoying a very active role—a speaking role this time—as a USCF delegate.

NC & National News

Tom Allen reports that Darryl Owens withdrew without notice from the Sandhills II tournament. He has been fined \$5.00, all TDs are asked to not allow him to play in their tournaments, unless he shows a signed receipt from Tom or gives us a check for \$5.00 made out to the Sandhills CC.

From the Policy Board Newsletter #1: Frank Elly has been named assistant editor of CL&R, replacing Roger Cox. Phoenix has first option for the 1980 Class, New Jersey for the Amateur Team. A tournament Membership category was established. The fee is \$1.00 per game, 50¢ for juniors. No magazine is included. Career Victory Awards begin with 30 won games not 100. The magazine name will change back to Chess Life as soon as possible.

Each USCF affiliate will receive 6 FREE Tournament Life ads of up to six lines per year. Organizers cancelling tournaments that are not physically impossible to hold cannot advertise in any form in CL&R for three years.

Lubomir Kavalek has been injured in some way and has been replaced by Edmar Mednis as Interzonal representative. If Kavalek recovers in time, he may be an alternate in case of a vacancy.

The following received the Koltanowski Medal for outstanding service to chess: Bill Church, Jacqueline Piatigorsky, and Louis Stratham. The following received Meritous Service Awards: George Cunningham, Arpad Elo, Burt Hochberg, and George Koltanowski.

Fairfield Hoban is the new CL&R Editor-in-Chief.

US Open

Seventeen women competed in the US Open at Chicago, the highest number in years. Diana Lanni of Michigan (1762) led all women with a fine 7-5 score which included 3 wins and 2 draws against experts (she scored +1 against the total of 9 experts she faced). Diana played at the recent US Womens Championship in California and will probably be playing in the US Womens for many years to come. Ursula Foster (Ca) scored

6 points and Alexey Rudolph of Washington 5 1/2

Unfortunately the Directors did not reach any of the new business on their agenda. The pace of the meetings was much too slow and the financial report took too much time. It turned out the new USCF annual financial statements had not been duplicated for the directors so this writer had to duplicate them late Saturday afternoon and early Saturday evening. Among motions not reached were two cosponsored by over 20 directors declaring that no Policy Board member should serve as FIDE Delegate or Zonal President and that the two posts should be separated. Currently, USCF President Gary Sperling, also holds both FIDE posts.

Policy Board members Cunningham, Hanken, and Redman all spoke against changes in the Tournament Life section of CL&R and my first motion for unlimited 6 line announcements failed 21-42. I read the Ed Issa (pronounced Ice-Ah) letter one more time and proposed 6 free 6 line announcements per affiliate per year, that passed 38-29. The proposal was cosponsored by Paxton, Butler, and McElyea of Ohio, Linden of Mn. Sutter of Mo., and Spiegel and Mirijanian of Ma. McElyea, Mirijanian, John Larkins of Ca. and Bruce Solomon of Fl. all spoke for a TL change. Executive Director Dullea just wrote me that this change would go into effect with the Jan. 80 issue of CL&R.

Harold Winston ■

What's up in Pennsylvania Chess

This editorial(?) is being written at the start of October, just after the Pirates have won the second game of the playoffs. Yea, Pennsylvania! Actually, things are a bit down at the moment. We ran the 1979 Pa. State Championship Tournament, and came out losers quite a bit, financially. After paying off all the prizes and accounting for debts still to be paid (namely, The Chessman for the remainder of all your subscriptions) our net worth is almost exactly \$100. Not much, but we are starting to do a few things.

September was a slow month in Pa. Bill Goiberg's Liberty Bell Open did not draw enough people to break even, which seems to be some achievement these days. October promises to be a bit busier. I've a non-rated tournament in three days, which will be sent down as soon as possible. Later on this month, we will run our second tournament at Orrie's Perm Palace. Things look all right so far for that one. November, however, will see a tournament in Philadelphia every weekend! There will also be some in Pittsburgh, which we're able to list for the first time in advance. If your club is planning any tournaments, even non-rated ones, please let me know as far in advance as possible, and I'll put it in the list we plan to publish every issue. Make sure that your clearinghouse also has the listing. Unofficially, I am functioning as a state-wide clearinghouse. I do not want to do it officially, as that would entail paper work that I do not have the time for.

We will be holding the Pa. Team Tournament next Jan 12-13 at Cheyney State College, in suburban Philly. Actually, it's near West Chester, which is not really suburban, but close enough. The coach at Cheyney and I (he's Roy Eikerenkoetter) are planning on submitting some bids for national collegiate tournaments. It is beginning to look like the National High School and Jr. H.S. will be held at the Philadelphia Sheraton next year from May 9th - 11th. I do not yet know when the state scholastic tournament will be held, but Joe Ohler knows of one bid from central Pa. and I know of one or two others coming in from Northeastern Pa. (Wilkes-Barre and possible Bloomsburg). If you are participating in a scholastic chess league this year, please contact Joe Ohler with details. Joe would like to coordinate a divisional playoff system for the state with in a year or two.

If you get any mail from me with U.N. postage stamps on it, please save the stamps and return them to me next time you write to me. I was able to save PSCF some little bit of money by buying a quantity of U.N. Stamps below face, both for my collection and for bulk mailings like I'll be doing this weekend from the stamp show in Philly. (Wonder if the Pope plays?)

Should any of your school teams wish to play a postal match, contact Centerville Jr. H.S., Lancaster, Pa. They play a lot of them.

Guess that's all for now--hope to see you at some tournaments.

Ira Lee Riddle ■

Foreign Policy in Chess

Writing in Chess Life And Review last March, President Gary Sperling explained the changes made in the US representation to the World Chess Federation, FIDE, thusly:

"The Policy Board also determined that USCF needed a new style in FIDE, a style that avoided both international politics and intramural disputes."

In May he elaborated further on US policy, citing strong differences of opinion among USCF members on various issues:

"Your Policy Board has therefore taken a position of political neutrality. Knowing that it is our task to represent the full membership of USCF, we have chose to avoid national and international disputes on which our members may strongly disagree."

Since the new style in FIDE to which Mr. Sperling referred involved dismissing both the former USCF representatives to FIDE in favor of himself as sole representative, he has notably failed to avoid intramural disputes. The most notable non-event of the USCF meetings in Chicago this summer was the consideration of resolutions proposed on this matter by the USCF Delegates. The President, who had pointed with justified pride during his campaign for election to his ability to chair a meeting and keep it on schedule, was not able to get very far at all this year with the possibility of criticism confronting him, and consequently we can expect a greater furor in Atlanta next summer, when the critical resolutions will have the privileged status of old business.

Such is politics, I suppose. The interesting question to me, and I suspect to most readers, is the one contained in the May statement: should the USCF avoid controversial questions in FIDE? It might even be asked: Can we?

I should note that our former policy was unashamedly activist. Our representatives did all they could to smooth the way for Fischer's World Championship challenge, and to obtain his terms for the challenge match that was never held. Considerable wheeling and dealing was involved. When Israel held the Olympiad, and the Arabs and Communist nations boycotted it, we participated (and won). Most recently, in the spring of 1978, the Policy Board approached FIDE President Euwe through our President George Koltanowski, asking him to use his influence to secure the exit of Viktor Korchnoi's wife, Bella, and their son, from the USSR. (Euwe declined to act.)

What are the controversies in FIDE? Some are mainly clashes of personality and ambition, but the big ones are right out of the daily papers: Arabs versus Israel, Black Africa versus South Africa and Zimbabwe Rhodesia, and Russia versus the Western world. They are unavoidable, and to a large extent intractable: for many small countries the opportunity to promote national policy in an international setting is the principal reason for participation in FIDE--the expense money for meetings comes from the government, and so does the permit to take it out of the country. Under such conditions it is perhaps naive, and certainly futile, to try to dissociate FIDE from politics.

What then should the US do? On some disputes we can stand aside in good conscience, either because we have no interest, or, more likely, because we have interest on both sides and a still stronger interest in reconciliation. It seems to me though that the Policy Board is obligated to try to perceive our interests and, where action is needed, to instruct our FIDE Delegate to act to promote them. Ed Edmondson, our Delegate to FIDE for many years, told me of a conversation early in his career with a delegate from a small Latin American country who was convinced that the US had entered into a pact with the USSR on certain FIDE matters.

Amazed, Ed asked why, and was told "because you did not oppose them on the floor when the Russians put them forward." The US is a recognized leader, and its silence signifies acquiescence. Fortunately, I think, the PB is beginning to recognize its responsibilities in this matter. At its August meeting the following resolution was passed:

"The USCF reaffirms its commitment to the right to play chess and therefore opposes all boycotts that would hinder that right." This in effect is a criticism of the USSR, among others. The board also acted decisively on a resolution concerning a tournament in South Africa.

I believe Sperling can be a strong and effective FIDE Delegate, and I hope the Policy Board will give him some definite policies to uphold, even if some criticism comes with it. That is their job.

Lee Hyder

On The Grapevine With Pevine

Pevine is a highly placed chess official who has agreed to keep us abreast of the shifting sands of American chess politics. Pevine's forth grade education mandates rewriting of some of his material, however, you can be assured that any ideas that appear in this column are not those of The Chessman staff. -Ed.

The key thing immediately is to get the ratings up to date, as fast as possible. The rating GAP is giving the Russians a clear advantage, and further delays don't help. Dullea told the Delegates that a supplement would be due in late August and September labels would be changed. That statement was made on Sunday, August fifth.

I don't know why CL&R and the USCF Office like to give The Chessman such a hard time. Official policy is to "hide it!". There is no reason for this-(is there?).

Multiple office holding is really becoming unpopular, unless, of course, you are the one who is doing it.

LETTERS TO THE EDITOR

Dear Earle: September 6, 1979

Our policies with regard to prisons chess are based on the recommendations of our committee on this subject, which was chaired for many years by Colonel Paul Webb of Arizona and is now headed by Helen Warren of Illinois. You may be interested to know that I myself recommended that the American Chess Foundation make grants to Jim Schroeder for his work, a recommendation which the ACF has accepted now on two occasions.

I don't really know what the dispute is over the listing of your magazine in CL&R, and I am therefore forwarding your letter to our office for proper review. There is no doubt that your magazine should be listed with the proper address.

Cordially,
/s/ Gary
Gary H. Sperling

Dear Earle:
Thanks. Rec'd books and magazines from USCF!

More later
/s/ Jim
James Schroeder

Dear Mr. Morrison,
Thank you very much I just received my sample copy of The Chessman, that I sent for. I liked it so much that I called Flora Cantrell and joined the Fla. Chess Assn. so that I would continue getting it. There was only one thing that I took exception too. Robert Snyder's article on CyberChess not being a computer, but much better. Well I have a computer Chess Challenger, I also have CyberChess, he is right

there is no comparison, the computer is worth 100 times more than the CyberChess. I like to be fair so maybe it's because I don't know the correct way to use CyberChess, but if I followed these instructions right then it's not much good. On the other hand the computer although not perfect, will give anyone a worthy game, and hours of good entertainment. Well here's looking forward to receiving more issues of The Chessman, and more Chess activities in FL.

Cordially,
/s/ Howard T Button
(I will comment on that later.) - Ed.

Dear Mr. Morrison,

The Chessman arrived while I was typing up the games. You were right when you said TC was improving with each issue. I was really surprised at the coverage you gave Arkansas-I did not think you'd have the room to print the five games I sent you and the games Donny Gray sent you-but you printed all I sent you. I think that having Donny Gray Games Editor is great. Do you know anything about CyberChess? Got a ad from them, they say you put CyberChess on one stage your defeat will be sure (2000! highest level.) I figure if it was true they would have had an article in CL&R about it. The ad says it is not a computer and uses no power. Then how the heck does it run? How does it think? Maybe their could be a story in Chessman about it?

/s/ Craig Kozel

Earle:

I was pleased with the Sept-Oct issue, and heard compliments for it from many people.

When you get the time, please send a deadline schedule for The Chessman to Craig Kozel, or better still, write up sometime about it in the next issue. I thought your article in this month's issue was very informative.

Sincerely
Danny Williamson

The Chessman Oct 3, 1979
Received Oct 5, 1979
Enclosed you will find 3 copies of Form 3526,
...
Please complete and return in duplicate the enclosed forms no later than October 1, 1979.
....
Garth M. Cain
Postmaster
Marietta, Georgia 30060

CyberChess Vs The Computers
By Earle Morrison

CyberChess is a board with levers, wheels, slots, and peepholes. The game starts by placing a game card in the machine. CyberChess moves and then gives its opponent a choice of up to five moves. Your opponent is really the author of the game card which may be Robert Snyder or Pal Benko, so yes, CyberChess can play 2000. Furthermore, you can learn more from it than from a small computer. It is not entertaining, and it takes hours to learn how to play. You will get out of it exactly what you put into it. The game cards (in effect library) are well edited. The price is a fraction of that of the small computers.

The small computers have a playing strength maybe 1200, some people say not that. Many high rated players enjoy the small computers with the blinking lights.

Therefore, it depends on what you are looking for entertainment or education, and what is your playing strength.

FCA Business Meeting

The Annual Meeting of the FCA was held on September 2, 1979 in the Princess Martha Hotel, St. Petersburg, with President Gilbert Cantrell presiding.

The minutes of the 1978 meeting were read and approved. The Treasurer's Report for the year ending August 31, 1979 was read showing a balance on hand of \$2,519.65, for an increase

for the year of \$1,108.94.

The slate of officers elected for the ensuing year are: President--Gilbert Cantrell, Vice President--Larry Storch, Secretary-Treasurer--Flora Cantrell. The Board of Directors are: Dr. Juan Gonzales, Hialeah; Mark Solomon, Casselberry; Steve Goins, Jacksonville; John Claxton, St. Petersburg; Tom Mercer, West Palm Beach; and Alan Tenan, Largo.

Charles Musgrove reported on our "Application to the IRS as a Non-Profit Organization", stating that we had cleared the first hurdle, that the main benefit will be that contributors could make tax exempt contributions. In the event we were turned down, we could keep re-applying to the IRS, after making corrections they requested.

Larry Storch spoke on The Chessman, that it was a fine magazine, but not enough Florida material. Our editor, Arnold Denker stated "send in more material--games, tournament results, crosstables, articles, anecdotes, and letters to the editor."

Mark Solomon spoke of the U of F Chess Team that went to the Pan-American Inter-Collegiate Tournament during the Christmas Holidays. They received \$500 from the student government and \$100 from the FCA. He hoped that more help could be given next year, and that the 1980 Pan-American would be held in Los Angeles.

Miles Ardaman spoke for the Jr-Sr. High School Tournament held each year, asking for more help next year, suggesting we support the 1st and 2nd winners with \$200 each toward expenses to the National Tournament. Mr. Denker stated that the American Chess Foundation would help if asked. It was also commented that the Expert Tournament needed our support, as none was held last year.

John Nardandrea thanked the Florida Chess Association for the support given to the U of F State Chess Team.

The meeting was adjourned on a unanimous vote, with thanks to the Secretary for her extra hours of work this past year.

CLEARINGHOUSE REPORT

This is a list of all known Pennsylvania tournaments as of October 3, for further details, contact either the organizers involved or check the tournament announcements.

Nov 3	PSCF-Awbury Quads, Awbury Rec Ctr. Philadelphia, Pa.
Nov 10-11	ECA Nov. Phila. Grand Prix
Nov 17-18	3rd Chaturanga Open, Hathboro
Nov 23-25	CCA National Chess Congress, Phila
Nov 30	30-30 Swiss, Pittsburgh CC
Dec 8-9	ECA Phila. Dec Grand Prix
Dec 22	PSCF-Chaturanga Octagonals, Hathboro 1980
Jan 5-6	(Tentative)'ECA Phila. Jan Grand Prix.
Jan 12-13	PSCF Pa. Team Tournament, Cheyney State College.
Jan 12-19, 26	Pittsburgh Metro Championship
Jan 26-27	Liberty Bell Open, CCA, Phila.
Feb 23	(Tentative) PSCF-CBM #7
Feb 29-Mar 2	CCA Phila tournament
Mar 15	(Tentative) PSCF-CBM #8
Apr 4-6	CCA Phila. tournament
Apr 19	(Tentative) PSCF-CBM #9
May 9-11	Probable National High School Probable National J.H.S. CCA Grand Prix in Phila.
May 17-18	Bucks County Championship Bucks County Junior
July 2-6	World Open Phila.
Aug 15-17	CCA Phila, Grand Prix
Dec 12-14	CCA Phila, Grand Prix

Chess O.O

Got alot of stuff to cover this time. As reported elsewhere in this issue, I'm now editor of the NC material. Send all games, tournament reports, articles, crosstables, stories anecdotes, etc. to me at 406 Morrison, Chapel Hill, NC 27514. Even better, send me games, tmnt

reports, etc. I am still getting very little non-commissioned (i.e. not begged) material.

My plans for our section of The Chessman are as follows: a personality/interview/profile of someone each issue. Next issue's will probably be the NC Invitational Champion. At least one game per issue annotated by Greg Samsa. An NC Club of the month profile. Any frustrated writers out there? I would like for an 1800+ player to write a column on either openings or endings. Also, another 1800+ player to answer member's questions ala "Ask the Masters". By the way, the reason there is no NCCA rating list in this issue is that I didn't think it was worth it to keypunch 300 ratings that are all at least six months out-of-date. I called the USCF a couple of weeks ago (mid Sept.). The all-new reason for the lack is that their programmer became seriously ill and they're having to find another one. The new estimate was sometime in November.

Next topic: SAVE MONEY! Now that I have your attention, here is a special offer for all NCCA members. As you know from last issue, USCF dues are going up Jan. 1. The NCCA has a policy of passing on the affiliate discount on memberships to members. As such, if I receive your request for a membership before Dec. 15th (Date of my last final and my last day before I leave here for winter break until Jan.) these memberships will only cost you \$12.00/year for adults and \$6.00 for full juniors. Send me your birthdates, ID numbers, and expiration date and a check for as many years as you like. But, you can only buy junior memberships for as many years as you have before you turn 18. Enclose a stamp so I can send your receipt back. You can also renew your NCCA membership in advance.

The dates for the 1980 NC Scholastics will be April 12-13. Deadline for bids will be December 15th. Send bids or requests for information to me before that date.

By the time you read this the 1979 NC Invitational will have taken place. Invitees are: Greg Samsa 2192, David Steele 2125, Lee Taylor 2098, Alfredo Cruz 2016, Charles Alden 2014, and Maurice Dana 1937. Alternates are Dan Liu 2001, Jim Watson 1986, Jim Osborne 1938 and Robert Streeter 1935.

In accordance with the NCCA business meeting vote a vote of thanks and appreciation is expressed to the following active NC tournament directors: Louis Cobb, 5234 Vann St., Raleigh NC 27606, Lamont Allen, 1007 Hillside Dr., Rockingham, NC 28379, Clyde Davis, Rt. 3, Box 226, Lexington, NC 27292, Herb Horton, Box 365, Black Mountain, NC 28711, Branson Sheets, Box 8, Willow Springs, NC 27592, Michael Dreyer, 357 Sumnerhill Rd., Fayetteville, NC 28301, Al Lipkin, and saving the best for last Tom Galloway!

Entries are now open for the Top Fish of NC for 1979. Have you ever played a game which was so totally lousy it was unbelievable? Well, that's what this contest is all about. Send me the worst game you or an opponent have played in a rated NC tournament during 1979. Deadline for entries is Jan. 15, 1980. I'll go over them and select the worst three, which will be published in The Chessman without names or ratings listed. All players of any state with ratings under 1000 in the annual rating list in December will be eligible (sic) to cast votes for the absolute worst game in NC chess in 1979. The winner? will receive the special Top Fish trophy and will have his name revealed. Remember, you can nominate your opponent in a game you played. Send entries to me with "Top Fish candidate" written on the top. If there were any extenuating circumstances, include those too. Send in whole "fish game" tournaments. This is utterly serious and the first person to send in one of my games gets his membership revoked. Include the name, location, and date of the game.

So far I have received only three responses to my US Junior article last issue. Please get these in. More information next issue.

A few mistakes were made in the LPO article last issue. Peter Zaas, not Peter Togs was 2nd Amateur. Also, he was not clear 2nd. Glenn Evans also had 4 1/2, but took the top C prize instead. Other C prize winners were James Tob-

in (1595) NC, James Hyatt (1581), SC, and Ron Easter (1486) TN. Glenn's rating is 1470. My apologies to these players. Glenn wrote me about it and stated that while a written apology would not be enough, perhaps a monetary settlement could be arranged. Well, at present ad rates, I figure that he owes me about \$5 for this. That is OK Glenn.

I'll include those 2 GM games next issue since I ran over so much this time.

The NCCA currently has 260 members and the treasury is \$611.01. Next issue will include a complete treasurer's report for 9/78 to 9/79 and the financial report on the Invitational and Closed and a membership analysis of the same period.

Finally, the deadline for material to reach me is the 5th of each even-numbered month.

Tom Galloway

NCCA Business Meeting

The annual NCCA business meeting was called to order at 11:35 AM on September 1st. Approximately 25 members attended at least part of the meeting, which was chaired by President Bill Wall. Tom Galloway recorded the minutes. Vice President Al Lipkin was not present.

The reading of the old minutes was waived by acclamation. It was announced by the officers that Tom Galloway is now the editor of the NC section of The Chessman. This led into a discussion of The Chessman and the NCCA's association with it. A motion was made to continue the association for another year. This was passed unanimously. A discussion of what NC material should be included in the magazine followed, with the new editor asking for material from all NC players.

Clyde Davis then moved that regional officers or coordinators be established. He described the qualifications as being active in at least one club, preferably more, and being aware of active players. The duties were to be to increase communication with members for officers and to help organize activity in new areas. After discussion it was passed unanimously that such offices be established to be appointed by the President (volunteers accepted) and that the term be until they are sick of it and that names and addresses be published in The Chessman.

A motion to increase dues for juniors was tabled.

It was unanimously decided to express a vote of appreciation to tournament directors active during the past year as well as publishing their names in The Chessman.

Clyde Davis opened a discussion about increasing the number of players eligible to play in the Closed. After discussion, Arthur Menius moved that the closed be changed to be open to all. This motion was passed unanimously.

Clyde Davis and Jim Hardy made a motion that the NCCA investigate the possibility of holding more cash raising tournaments and regional tournaments. This was passed unanimously.

The meeting was adjourned at 12:40 PM.

Tournament Reports

SANDHILLS II

By Thomas L Allen

Rockingham's Sandhills Chess Club sponsored their second rated tournament of the year and was awarded a very evenly matched tournament consisting of 29 players.

In the top section Terry Newman (1859) won the first place trophy with a 2 1/2 score including a win over a 1999 rated player. Ulf Hellsten (1612) won the second section on tiebreaks over Robert Smith (1492) with a 2 1/2 score. This section ended the second round with four people having a score of 1 1/2. The third section was won by Arnold Tharrington (1413) again on tie-breaks over Will Foster (1258).

The last section was won by Jerry Sheppard (Unr) with a 3 score, the only perfect score of the tournament and the only local club member to finish in the winner's circle. Since there

were 9 people in the fourth section, the club awarded a cash second prize and believe it or not there was a five way tie for second shared by Louis Cobb, Charles Corbin, Gary Cook, Mark Henderson, and Marvin Weaver.

The club also awarded free entry to the next Sandhills tourney in November to all first place finishers including those who lost the first place trophy on tiebreaks. Also for tiebreak losers, they received a consolation prize equal to the entry fee.

Everyone seemed to enjoy the competition and the facilities. We the Sandhills Chess Club hope to make Sandhill III even better.

Chess League

The Penn-Jersey Chess League, comprised of 8 teams, is active from October thru May. Each team plays each other team twice for a total of 14 matches.

Teams are: Elevator Knightwols
Elevator Kingbirds
Ladder Rookers
Ladder Zugzwangs
Penn-Jersey
Delaware Valley
Trenton Knights
Trenton

The two elevator teams are an outgrowth of the Elevator Club, which was begun by Ralph Hornberger of Yardley 5 years ago. By mutual arrangement, players play each other, and a ranking is determined. Now the club meets once a month (3rd Monday) in the Bristol Grundy Library.

Similarly, the two ladder teams are an outgrowth of a club begun by Paul Ferguson of Bristol. Likewise, mutually arranged games are kept for an in club rating. The Ladder hosts an annual simultaneous match. This year it features one of the Costigans. Also each year there is a club championship in four or five sections.

The Penn-Jersey team meets each Monday in Morrisville. The Delaware Valley team meets each Tuesday in Levittown. The two Trenton clubs hold their weekly meetings on Fridays.

The termination of the league season is highlighted by a banquet, with a key speaker.

NC Closed

Due to a postal mistake no CL&R advertising appeared for this year's NC Closed, despite being mailed off in plenty of time to reach New Windsor before the deadline. Because of this, only 55 people and 1 computer program showed up, as compared to 75 last year.

On the way to handing out the prize money, several interesting events occurred. During round 1, a dog somehow got into the playing site (Great Hall, Carolina Union, Chapel Hill) and headed straight for the stage where Board 1, Samsa-O'Connell, was located. Said dog went under the table between Greg and Chris and just stretched out on their feet for a nap. The dog was removed from the playing area.

That first round game, by the way, was not decided until just before the start of the fifth round, which was delayed by the length of this game.

The final round was highlighted by the pairing of DUCHESS (Duke University computer program) and one of her creators, Bruce Wright, whose ratings is lower than his creation. The last game of the tournament to finish, it resulted in a draw.

The new NC Champion is David Steele with a 5-1 score. Second place was a tie between Greg Samsa and Maurice Dana, each with 4 1/2 points. These three also won invitations to the NC Invitational. Top A was Robert Streeter with 4. Top B/below was Ron Simpson with 3 1/2.

Joseph Sims and Glenn Evans were co-champions of the Amateur Section with 4 1/2 points each. Top C was David Baldwin with 3 1/2 and Top d/below winners were Clyde Davis and Milton Fields, each with 2.

Randy Grim swept the Reserve Section with a perfect 6-0 score. Second place went to Danny McKeithen who had 5-1. Jackie Ryan was Top E

The Chessman Nov-Dec 1979

FLORIDA GRAND PRIX

JAN 26-27

Reitz Union

5-S

**RDS: 9-2-7,
10-3**

**Univ. of Fl.
Gainesville, Fl. 32601**

**State Membership Req'd Reg: 7:15-8:30 AM No Smoking
Enter: Jay King, Box 13162 Univ. Station, Gainesville, Fl. 32604**

Open Section: TL 30/90, EF \$20, under 18 \$15 by 1/21.

Prizes: [\$900 b/50, \$450 GTD] 350G-200-50,

Exp. 100, A 100G, B 100

**Reserve Section: TL 40/100, EF \$18, under 18 \$15 by 1/21
under 1600**

Prizes: [\$800 b/55, \$300 GTD] 225G-175-12

75, D 75G, E 75, Unr 50

Chess books for + scores

BOTH

Free for Women

1/2-pt. bye in rd. 1 if requested in advance.

**Hotel Rates: \$18-22-25 by 1/11 Ph 392-2151
mention tnmt.**

EF: \$5 more at site

**THE CHESSMAN
2672 MOSS LN.
MARIETTA, GA. 30067**

**SECOND CLASS
POSTAGE PAID
AT
MARIETTA, GA. 30067**