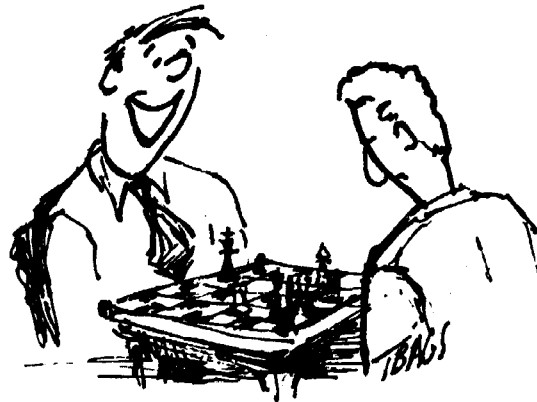
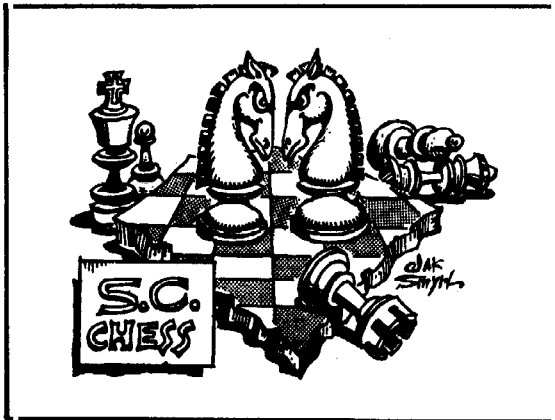


The Chessman

PRICE 75¢

MAR-APR 1980

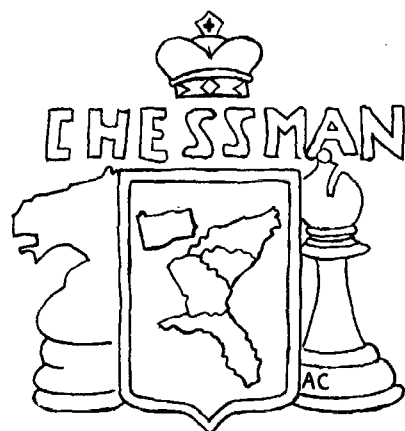


"Gosh I'm sorry fella. I just crushed you like a worm, didn't I!"

M. Lee Hyder
33 Longwood Dr.
Aiken, S.C. 29801

**SECOND CLASS
POSTAGE PAID
AT
MARIETTA, GA. 30060**

WITH
Additional Mailing Office
in
Atlanta



JOIN THE EASTERN CHESS SOCIETY

BENEFITS: You will receive The Chessman six times a year, and be entitled to special discounts on USCF memberships.

Adult 1 Yr. Pa. & SC \$6, with USCF \$18.; Ar,Fl,NC \$5 with USCF \$17.; Ga. \$5, with USCF \$20.

Adult 2 Yr. Ga. \$9.

WVa. 1 Year \$5

Junior 1 Yr. Ar,Fl,NC,Pa,SC. \$3 with USCF \$9; Ga. \$5, with USCF \$13.

Junior (No magazine) SC \$1, with USCF \$3.; Ga. \$2 with USCF \$4.50

Send Memberships To:

Arkansas: ACA, 2316 S. Pine St.,

Little Rock, Ar. 72204

Florida: FCA, 4040-67th Ave., N.

Pinellas Park, Fl. 33565

Georgia: GCA, 1269A N. Morningside

Dr., Atlanta, Ga. 30306

North Carolina: NCCA, 406 Morrisor

Chapel Hill, N.C. 27514

Pennsylvania: PSCF, Fox Run Apts

F24, 365 Newtown Rd., Warminster,

Pa. 18974

South Carolina: SCCA, 7 Winthrop

Dr., Aiken, SC 39801

West Virginia: WVCA, P.O. Box 121

Ceredo, Wva. 25507

Make checks payable to: ACA, FCA,

GCA, NCCA, PSCF, SCCA, or WVCA.

Subscription Only \$4 Send to

The Chessman, 2672 Moss Ln.,

Marietta, Ga. 30067. Ph (404)

952-8259

NAME: _____

ADDRESS: _____

CITY: _____

ZIP CODE (REQ'D) _____

If Junior Birthday _____

GEORGIA CHESS ASSOCIATION

PRESIDENT

L. Thad Rogers

3055 General Lee Rd.

Macon, Ga. 31204

Phone (912) 742-5607

VICE PRESIDENT

William Ruiz

c/o Mike Decker

SECRETARY

Bill Noyes

777 Briarcliff Rd.

Atlanta, Ga. 30306

TREASURER

Mike Decker

1269A North Morningside Dr.

Atlanta, Ga. 30306

EDITOR

Alison Bert

1914 Jacolyn Place

Atlanta, Ga. 30329

PENNSYLVANIA STATE CHESS FEDERATION

PRESIDENT

Ira Lee Riddle

Fox Run Apts. #F24

365 Newtown Rd.

Warminster, Pa. 18974

Phone (215) 674-9049

VICE PRESIDENT

Tom Magar

1120 Jacks Run Rd.

N. Versailles, Pa. 15137

SECRETARY

Bob Dudley

107 Crosstree Rd.

Coraopolis, Pa. 15108

TREASURER

Gary Connors

93 Serene Dr.

Holland, Pa. 18966

Phone (215) 355-0878

On The Grapevine With Pevine

Pevine is not any particular person, and in the last issue the ideas of two people were merged, and in this issue we have a new Pevine, but in each case Pevine is someone familiar with the politics of the USCF. So, without further ado:

I can't understand why you let yourself get so upset. By now you should be used to this, and take it in stride. Whether you are aware of it or not from Sperling on down we are wracked with politics, politics, politics-- and you ain't liked. Why else would they horse you around this way?

I can offer you one piece of constructive advise. Either get a constituency and throw your weight around or do as I have done--FORGET IT.

Table of Contents

Short Stories	By Robert M. Snyder	3
Arkansas	By Craig Kozel	4
West Virginia	By Mark Hathaway	6
Bonanza in Gainesville	By Alan Tenan	7
Organizing a Grand Prix	By Jay King	7
Motoring Through The Grand Prix	By Larry Storch	8
1980 Orange Blossom Open	By Mark Solomon	8
The Loyal Opposition	By Greg Samsa	9
Chess 0.0	By Tom Galloway	9
Tournament Reports(NC)		9
Late News	By Tom Galloway	9
Ashville Chess Club	By Neil Harris	10
A History of the NC Scholastics	By Larry Mathews	10
College Chess in the 80's	By David Chu	11
Kentucky	By Alan Erlebacher	11
"Kolty"	By Georgw Koltanowski	12
The Pan Am	By Harold Winston	13
Pennsylvania	By Ira Lee Riddle	13
International Chess	By Bruce Rind	14
A Failure of Will	By Alex Dunne	14
Penn. Chess Tour. at Cheyney	By Roy Eikerenkoetter	14
Georgia-HS Chess League	By Steve Schneider	15
Chessman teams at the Pan Am	By Harold Winston	15
Letters to the Editor		15
Empire State Joins Chessman	By J. Earle Morrison	16
Clearinghouse House Report	By Ira Lee Riddle	16
Tournaments		16
CROSSTABLES		
Georgia, West Va.		17
Florida, Kentucky, NC		18
Pennsylvania		19

POSTMASTER

The Chessman (ISSN 0194-7370) is published bimonthly, subscription rates are \$4.00 per year, by The Chessman Co., P.O. Box 11288, Capitol Station, Columbia, S.C. 29211. All rights reserved. Reproduction in whole or in part without written permission is prohibited. Second Class postage paid at Marietta, Ga. 30060 or additional mailing offices in Atlanta, Ga. Send address changes to The Chessman, P.O. Box 11288, Capitol Station, Columbia, S.C. 29211.

USPS 476-790

S.C. CHESS ASSOCIATION

PRESIDENT

William Dodgen

2008 Robin Rd.

N. Augusta, S.C. 29841

VICE PRESIDENT

Marion Mahaffey

1207 Memorial Park Rd.

Lancaster, SC 29720

SECRETARY

Charles Braun

7 Winthrop Dr.

Aiken, S.C. 29801

TREASURER

Harold Kelley

811 Rhododendron Pl. SE

Aiken, S.C. 29801

WEST VIRGINIA CHESS ASSOCIATION

PRESIDENT

Donald Griffith

865 Carroll Road

Charleston, WVa. 25314

VICE PRESIDENT

Brett Thompson

1677 6th Ave. #5

Huntington, WVa. 25703

SEC-TREAS.

Thomas O. Berquist

P.O. Box 121

Ceredo, WVa. 25507

EDITOR

Mark Hathaway

159 Sycamore St.

Huntington, WVa. 25705



AR. CHESS ASSOCIATION

President

Danny Williamson

2316 S. Pine St.

Little Rock, Ar. 72204

Vice President

Donny Gray

709 S. Linden

Pine Bluff, Ar. 71603

Treasurer

Chuck Niggel

213 South Valmar

Little Rock, Ar. 72205

Secretary

Mike Clingan

Rt. 2 Box 203

Gurdon, Ar. 71743

Editor

Craig Kozel

P.O. Box 94

Perryville, Ar. 72126

FL. CHESS ASSOCIATION

President

Gilbert Cantrell

4040 67th Ave. N.

Pinellas Park, Fl 33565

Vice President

Larry Storch

1622 E. Harding Ave.

Orlando, Fl. 32806

Phone: (305) 896-3848

Sec-Treas.

Flora Cantrell

(same as President)

Phone: (813) 527-6010

Directors:

Dr. Juan Gonzales

Mark Solomon

Steve Goins

John Claxton

Tom Mercer

Alan Tenan

NORTH CAROLINA CHESS ASSOCIATION

President: Bill Wall, Box 167, Stony Point, NC

28678 Phone (704) 632-5751

Vice Pres: Alan Lipkin, 2635 Glenhaven Lane,

Winston-Salem, NC 27103.

Sec-Treas. & Editor: Tom Galloway, 406 Morrison,

Chapel Hill, NC. 27514

SHORT STORIES

by Robert M. Snyder

24 Jan. 1980

Hi Earle!
I personally like Chessman and think that it is lively, full of games and information. The trouble with expanding a magazine into another area is to get news & information from the new area (if you can find a reliable correspondent who wishes to be a co-editor and represent that area you are in good shape) and to get subscriptions and let the people in that area know about your magazine. It isn't easy. (Tell me about it Robert-Ed)

To get Chessman onto the newsstands is a good idea - few chess magazines are found on the stands (with CL being found only once in awhile)

Yours,

/s/ Robert M Snyder

A SHORT CAREER

Rudolph Charousek (1873-1900) was a Hungarian Master who learned the moves late in life, at the age of 16. He was soon to be recognized as one of the top players in the world. In tournament competition he tied for first place with Chigorin at Budapest, 1896, won clear first at Berlin, 1897, and shared second prize at Cologne, 1898 (despite ill health). He died of tuberculosis at the age of 26 when many of his competitors considered him to be a future World Champion.

The following game is considered to be one of Charousek's finest masterpieces. Black builds up a strong King side attack penetrating with his Queen and two Bishops to secure a sparkling victory.

TWO KNIGHTS DEFENSE
BUDAPEST, 1896

(W) Hermann (B) Charousek

1 P-K4 P-K4 3 B-B4 N-B3
2 N-KB3 N-QB3 4 N-B3 ...

This allows Black's strong reply where 4 N-N5 or P-Q4 are more standard.

4 ... NxP! 5 NxN ...

Here 5 BxP+ KxB 6 NxN P-Q4 favors Black due to his strong pawn center

5 ... P-Q4

The idea of Black's last move; now he recovers his piece through a fork.

6 BxP

It is better to play 6 B-Q3 to meet PxN with 7 BxP.

6 ... QxB 7 N-B3 Q-Q1

The Queen is less likely to be exposed or in the way of development at Q1.

8 0-0 B-Q3 9 P-Q3 0-0

9...B-KN5 was to be considered.

10 P-KR3 P-B4 12 Q-K2 Q-K1
11 R-K1 B-Q2

Black is shifting his Queen towards the King side to aid in the build-

up.

13 B-K3?

The Bishop becomes a target here; therefore, 13 B-Q2 was better.

13 ... Q-N3

Threatening 14...P-B5 15 B-Q2 BxP

14 K-R1 P-B5 15 B-Q2 N-Q5

With the idea of removing White's K-side defender, the KN.

16 NxN ...

If 16 Q-Q1 then Q-R3 is strong.

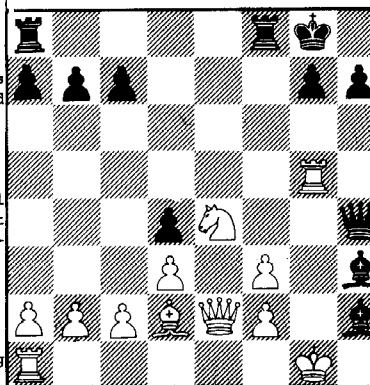
16 ... PxN 17 N-K4 P-B6

To open up White's K-side.

18 PxP

18 Q-B1 was better.

18 ... BxP 20 R-N5 Q-R5
19 R-KN1 Q-R4 21 K-N1 B-R7+!



22 K-R1

If 22 KxB then B-B8+

22 ... B-B8! 23 Q-Q1 ...

If 23 QxB then B-N6+ wins.

23 ... B-K7 24 Resigns

White is helpless. If 24 QxB B-N6+
25 K-N1 Q-R7+ 26 K-B1 Q-R8 mate!

A BRILLIANT DRAW

The following game is a classic example of a King Tour where the slightest mistake can be fatal.

VIENNA GAME

VIENNA, 1872

(W) Hamppe (B) Meitner

1 P-K4 P-K4 3 N-R4?! ...
2 N-QB3 B-B4

The second move of the Knight is somewhat questionable on general principles.

3 ... BxP+!?

An interesting sacrifice which exposed White's King, however 3... B-K2 would leave White's Knight awkwardly posted.

4 KxB Q-R5+ 5 K-K3 ...

Not 5 P-N3 as Black would play QxKP forking a rook and a knight.

5 ... Q-B5+ 6 K-Q3 P-Q4

Black boldly attacks in the center forcing open lines and threatening 7...QxKP+

7 K-B3 QxKP 8 K-N3 ...

The only reasonable way to guard the Knight, not 8 N-B5 because of Q-Q5+ or if P-QN3 then Q-Q5 mate.

8 ... N-QR3

Developing with a threat of mate.

9 P-QR3

BxN would open up the QN file for Black's Rook after PxN

9 ... QxN+

Driving White's King further out into enemy territory.

10 KxQ N-B4+

Black must prevent White's King from escaping through QN3.

11 K-N4 ...

Here K-N5 was to be considered.

11 ... P-R4+ 12 KxN N-K2

Black threatens mate with 13 ...P-N3+ 14 K-N5 B-Q2.

13 B-N5+ K-Q1 14 B-B6! ...

The only move to avoid mate.

14 ... P-N3+ 16 KxN ...
15 K-N5 NxB

If 16 K-R4 then N-Q5 followed by B-Q2 mate.

16 ... B-N2+! 17 K-N5 ...

Not 16 KxB? because of K-Q2 followed by KR-QN1 mate.

17 ... B-R3+ 18 K-B6 ...

If 18 K-R4? then B-B5 followed by P-QN4 mate.

18 ... B-N2+ 19 Drawn.

At this point the players agreed to a draw as it would be disadvantageous for either side to deviate from the perpetual check. This must be one of the most exciting draws on record.

THE DEVIL PIN

In the following game Skratulia sacrifices an exchange to obtain a strong attack. A fine effort by the young expert who has probably now obtained enough rating points to make master.

ENGLISH OPENING

(W) Jonsson (B) Skratulia

1 P-QB4 N-KB3 3 N-B3 P-K5?!
2 N-QB3 P-K4

This allows the KP to become a target, therefore 3...N-B3 is more solid.

4 N-KN5 P-N4

Black realizes that normal methods of defending the KP would fail, therefore he offers a gambit in an

attempt to throw his opponent off balance.

5 P-Q3?

After 5 NxNP Black shouldn't be able to gain enough compensation for his sacrificed pawn.

5 ... PxQP 7 N-Q5? ...
6 QxP P-KR3

White realizes that he would win the exchange after Black's next move but doesn't realize how strong Black's attack will be, therefore it was better to retreat the KN.

7 ... PxN! 10 QxR B-N5+
8 NxN+ QxN 11 K-Q1 ...
9 Q-K4+ K-Q1

If 11 B-Q2 BxB+ 12 KxB QxNP+

11 ... Q-Q5+ 13 K-N1 ...
12 K-B2 QxBP+

If 13 K-Q1 N-B3 with the threat of 14...Q-Q4+ followed by N-Q5+ winning White's Queen.

13 ... N-B3

Cuts off White's Queen, brings the Knight into play and threatens 14 ...Q-K5 mate.

14 P-B3 N-Q5

Threatening 15...Q-B7 mate.

15 Q-K4 B-N2! 17 PxQ R-K1
16 Q-Q3 QxQ+

Black has all his pieces developed whereas White doesn't have a single piece in play!

18 P-QR3 R-K8! 21 K-R2 B-Q4
19 PxN N-N6 22 RxN P-QB4!
20 R-R3 RxB+

To eliminate White's QNP to allow for the P-QR4-R5 idea.

23 P-N3 PxP 26 P-B4 BxB
24 B-N2 RxB 27 Resigns
25 BxR P-R4

Black would continue with 27...B-Q4

Discover, Check & Fork

VIENNA GAME

(W) Robert M Snyder - USA

(B) G.A. Shmeleff - Australia

ICCF MASTERS TOURNAMENT 1977-79

1 P-K4 P-K4 3 P-KN3 P-Q4
2 N-QB3 N-KB3

3...B-B4 is the main alternative.

4 PxP NxP 5 B-N2 B-K3?!

Better is 5...NxN.

6 N-B3 ...

One of White's main ideas is to put pressure on Black's King Pawn.

6 ... N-B3 8 R-K1 B-B3
7 0-0 B-K2 9 NxN ...

The old move in this position was 9 N-K4 which gave White a slight edge.

9 ... BxN 10 P-Q4 ...

The idea of White's 9th move be-

comes apparent; now that the King Pawn is pinned, white continues his attack on it.

10 ... P-K5

If 10 BxN White gets a good game after 11 BxB NXP 12 BxP R-QN 13 B-N2 0-0 14 P-QB3.

11 N-Q2 BxQP 12 NXP ...

With the threat of N-B6+!

12 ... 0-0 14 QxB! ...
13 P-QB3 B-N3

White will obtain the two Bishops and give Black doubled isolated pawns.

14 ... QxQ 16 BxQ ...
15 N-B6+ PxN

With the threat of BxN.

16 ... N-K4 18 K-N2 ...
17 BxP QR-Q1

Unpins the KBP, covers KB3 and allows for a more active King in the endgame.

18 ... N-Q6 20 B-K3 R-N1
19 R-K2 KR-K1

If ...BxB 21 PxP R-N1 22 R-Q1!

21 B-QR6 BxB 23 RxB+ RxB
22 BxN B-B4 24 R-Q1 P-QR4

Not 24...R-Q1 because of 25 BxP+!

25 B-B4 R-K5 26 B-N5 R-K3

With the idea of R-N3.

27 R-Q5 R-K4 28 R-Q7 R-K2

Not 28...BxP because of 29 B-B4.

29 RxB BxB 30 P-KB4 ...

Not 30 K-B3 because of B-B4

30 ... B-B4 36 K-Q5 B-Q7
31 K-B3 K-B1 37 P-QR4! B-B8
32 K-K4 K-K2 38 P-N4 PxP
33 P-B5 B-N8 39 PxP B-K6
34 P-KR3 B-B7 40 K-B6 K-Q1
35 P-KN4 B-KB 41 K-N7 B-Q7
42 P-R5 Resign

Youngworth Beats Browne

California Master Perry Youngworth defeats former U.S. Champion Walter Browne in the following game. As a result, Youngworth, age 17, went on to defeat David Strauss in the final round and win the American Open.

ENGLISH OPENING AMERICAN OPEN, 1979

(W) Perry Youngworth
(B) Walter Browne

1 N-KB3 N-KB3 4 PxP NXP
2 P-B4 P-B4 5 P-KN3 ...
3 N-QB3 P-Q4

Also playable are 5 P-K3, 5 P-Q4, or 5 P-K4.

5 ... P-KN3 7 NxN ...
6 B-N2 B-N2

4 Q-R4+ or 0-0 are the most common moves here; with the text White might take advantage of Black's Q which may become exposed to attack on the K-R1-QR8 diagonal.

7 ... QxN 9 0-0 N-B3
8 P-Q3 0-0 10 Q-R4 ...

Along the fourth rank the Q has many possible uses.

10 ... Q-Q3

Removes the Q from possible attack in the future by White's KB.

11 B-B4 P-K4

Blocks out the attack on the Q & attacks White's Bishop. However, it has the drawback of blocking out Black's KB along the long K-R1-QR8 diagonal.

12 B-K3 B-Q2

Threatening 13...N-Q5 with a discovered attack on White's Q.

13 Q-R4 ...

A potentially strong attacking post for the Q on the K-side.

13 ... N-Q5 14 N-N5! ...

Threatening mate and heading for the active K4 post.

14 ... P-KR3 15 N-K4 Q-N3

If 15...NXP+ 16 K-R1 & White is attacking both Black's QBP & KRP in addition to the Q.

16 BxN ...

Eliminates Black's most active minor piece.

16 ... BPxB 17 P-B4 ...

With the idea of opening up lines and increasing pressure on Black's K-side which increases White's attacking prospects.

17 ... QR-K1 18 PxP P-N4

18...RXP was to be considered.

19 Q-R5 RxB 20 P-KN4 ...

In anticipation of a future P-KB4 by Black and restrains Black's KNP

20 ... Q-K3 23 B-N2 RxB+
21 B-B3 P-B4 24 RxB RxB+
22 PxP R/4xP 25 KxR QxP?!

By going pawn hunting, Black's Q will be out of play giving White attacking chances.

26 N-B5!

Attacking the QB, QNP and opens the diagonal for White's Bishop.

26 ... B-B4 27 Q-KB+ B-B1?

Black should play 27...K-R2 & if 28 P-N3 then Q-N8+ 29 K-B2 Q-B8 attacking the N & allowing for a possible Q-K6+.

28 P-N3!

Cuts of the Black's Q important diagonal, allowing for B-Q5.

28 ... K-N2 B-Q5 ...

Threatening 30 Q-B7+ K-R1 31 Q-N8#

29 ... K-B3 32 Q-N8+ K-B3
30 QxB+ K-K4 33 Q-Q6+ Resigns
31 B-K4 B-N5

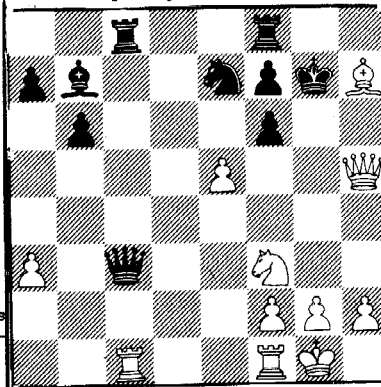
SNYDER'S CHESS SERVICES by USCF Master Robert Snyder

Game Analysis, brief for short games only) \$5.00 per game, Detailed \$10.00 per game.
Positions Analyzed - \$3.50 per position.

Enclose a self addressed envelope or extra \$.50.
Also write for a free brochure on "CyberChess" a chess playing machine (not a computer but better!) which has a cost of only \$34.95. You will love it as both a teacher and a substitute playing partner.
Robert M. Snyder, 14282 Jessica St., Garden Grove, Ca. 92643.

Arkansas

I am, as usual, very pleased with this issue of TC - I especially like the back - page ad for the Ar Pro/Am. However, I must disagree with the comments about the Mapii/Niggel game! I agree that 20...Qc3 is !; however, the comment under the game is incorrect, the original reason why I gave Racl!, because it contained a trap. I give the following.



21 ... Qcl??
22 ef
22a ... Kf6 22b ... Kh8
23 Qe5 mate 23 Bb1 Kg8
24 Qh7 mate
The comment is true Black wins a whole Rook, but unfortunately his King falls, the original Racl! may have been a bit hasty (perhaps Racl! ?!) - a little bit too trappy. Probably 21 ef followed by a Bishop retreat is more promising.
Danny Williamson

In the last issue of TC I left out the South Arkansas Open, held in Camden, in the list of tournaments in Arkansas. June--South Arkansas Open - Donny Gray (5-0) Sorry Donny This report is a conglomeration, with games from the LRCC Champ. (won by Roger Martin), and other games from recent events. See you at the Pro/Am.
I'm looking forward to seeing everybody at the 1980 US Open in Atlanta. Maybe we could play a skittles game while I'm there.
Regards
Craig Kozel

FINALS OF 1977 TEXAS POSTAL CHAMPS. SICILIAN DEFENSE DRAGON VARIATION

(W) Rod Broecker (B) Vince Parsons
Notes by the loser.

1 P-K4 P-QB4 2 N-KB3 P-Q3

3 P-Q4 PxP 10 0-0-0 R-QB1
4 NxP N-KB3 11 B-N3 N-K4
5 N-QB3 P-KN3 12 P-KR4 N-B5
6 B-K3 B-N2 13 BxN RxB
7 P-B3 0-0 14 P-R5 NXP
8 Q-Q2 N-B3 15 P-KN4 N-B3
9 B-QB4 B-Q2 16 N/4-K2 ...

The move Karpov introduced in his 1974 match with Korchnoi. Karpov crushed Korchnoi and was acclaimed for his sharp innovation. However, the move is E. Chumak's and he had already published analysis on it.

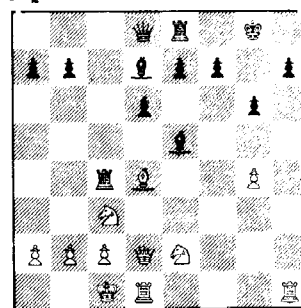
16 ... R-K1

Tarjan's antidote, instead of Korchnoi's Q-R4.

17 P-K5 NxNP 18 PxN BxKP?!

Standard is 18...BxNP 19 PxP QxP as in Browne-Tarjan and Kavalek-Tarjan 1975 US Championship. Both games were drawn. Lately, Tarjan has experienced a reversal with this line so I decided to find out why this move was not playable

19 R-Q4



19 ... BxB

Black misses his last chance by 19 ... RxB 20 NxR BxP. This would have produced an interesting battle, which would have been better than what happened in the game.

20 NxR P-K4 21 Q-R6 Q-B3

Grabbing the Knight was my original plan for it seemed White must take the draw. Unfortunately, 21...RxB 22 RxB PxR 23 QxP+ K-B1 24 N-Q5! is the end. From here on out the attack plays itself.

22 N-Q5 Q-N2 26 NxR R-K3
23 Q-N5 RxB 27 Q-Q8+ Q-N1
24 N-B6+ K-R1 28 N-B8 K-N2
25 RxB PxR 29 NxR+ PxN
30 Q-Q7+ 1-0

So the Dragon loses one of its many heads, but it shall return.

AMERICAN OPEN 78 POLISH OPENING

Notes by White
(W) Eric Bilsky (1346)
(B) Sam Young (1568)

1 P-QN4! P-Q4 3 N-KB3 P-K3
2 B-N2 B-B4 4 P-K3 ...

If 4 ...BxP 5 BxP.

4 ... N-KB3 5 P-B4 PxP

If 5...BxP 6 Q-R4+ N-B3 7 N-Q4 & both B-B1 and Q-Q3 turn out badly (Soltis).

6 BxP N/1-Q2 9 N/1-Q2 N-N3
7 P-QR3 B-K2 10 B-N3 B-Q6?
8 P-Q4 0-0 11 B-B2 BxB?

The whole affair is just a waste of time, but he doesn't have to help White develop his Q. If... B-N4 12 P-QR4 and the Bishop is forced off the diagonal.

12 QXB Q-Q4 14 N-K5 Q-N4
13 O-O P-QB3 15 KR-K1 ...

The Q can be trapped or at least pushed around a little.

15 ... B-Q3 16 P-QR4: Q-R3

If 16...QxNP 17 B-B3 wins the Q.

17 Q-N3 N/N-Q4 20 N/2-B4 Q-Q1
18 P-N5 PXP 21 NxB QxN
19 PXP Q-N3 22 B-R3 ...

And White won on move 42. The point of move 18.

SUNBELT POSTAL TOURNAMENT
(W) Donny Gray (B) David Hurkett

1 P-K4 P-K4 3 P-Q4 PXP
2 N-KB3 N-KB3 4 NxP!?

Book move is 4 P-K5, but in Postal Chess I try things that I normally wouldn't play.

4 ... NXP 10 N-B5 BxN
5 B-Q3 P-Q4 11 BxB P-Q5
6 O-O B-K2 12 RxB! QxR
7 R-K1 N-KB3 13 N-Q5 Q-K4
8 B-KN5 O-O 14 BxN QxN
9 N-QB3 P-QB4

If Black tries 14...QxB(4) then 15 N-K7+ wins.

15 Q-R5! QxB

Forced! If 15...PxB then 16 QxRP# and if 15...P-KN3 then 16 Q-R6.

16 QxQ PxB 24 QxNP R-K1
17 R-K1 N-B3 25 QxRP N-B6
18 R-K4 KR-K1 26 K-B1 R-K5
19 R-N4+ K-B1 27 P-QR4 K-N3
20 QxQB+ R-K2 28 P-R5 K-N4
21 P-KN3 N-K4 29 Q-B5+ K-N5
22 R-NB+! KxR 30 P-R3+ Resign
23 QXR K-N2

If 30...KxP then 31 Q-R5+ N-R5 32 QxN+ RxQ 33 PXR and wins.

ARKANSAS CHAMPIONSHIP
(W) Eric Bilsky (1449)
(B) Roger Martin (1936)

1 P-QN4 P-K4 2 B-N2 P-Q3

2...P-KB3 is sharper and leads to 3 P-K4.

3 P-QB4 B-K3 7 B-K2 P-KN3
4 P-K3 N-Q2 8 O-O B-N2
5 N-KB3 P-KB4 9 Q-N3 ...
6 N-B3 N/1-B3

Intending to form a Q-side pawn chain where the pressure on d4 will come in handy. Unfortunately, Black has a Bishop on the diagonal, a fact he tries to exploit.

9 ... P-KR3 11 KR-K1 P-B3
10 QR-Q1 O-O 12 P-Q3 P-QN4

Instead of playing around on the Q-side Black should play for a K-side attack. White's pieces are on the Q-side..

13 P-QR4 P-QR3 15 NxBP P-Q4?
14 N-Q2 PxBP 16 NxP! ...

Where else can it go? N-Q2 is chicken.

16 ... NxN 21 N-K2 QR-B1
17 R-QB1 N/B-N5 22 N-Q4 N-Q3
18 P-KR3 N-KB3 23 R-QB2 R-QB2
19 P-KB4 N-KB2 24 R/1-QB R/1-QB
20 B-B3 Q-Q2 25 NxB QxN

Now his Q is on a dangerous diagonal.

26 K-B2 N-B2

If not there follows 27 BxN BxB(QxB BxP+) 28 RxP RxR 29 BxP RxR 30 BxQ+.

27 P-N5! RPXP 33 P-N6 B-Q3
28 RPXP N-Q1 34 R-R7 N-B3
29 BxN BxB? 35 R-R1 B-B4
30 BxP PxB 36 P-Q4 NxP
31 RxR RxR 37 P-N7 ...
32 RxR B-K2

If NxQ 38 P-N8(Q)+ K-any 39 QxN.

37 ... N-B3 45 KxQ P-N4
38 R-R8+ K-B2 46 R-B7 B-K2
39 P-N8(Q)NxQ 47 KxP B-B1
40 RxN Q-Q3 48 R-B6+ K-B2
41 R-N7+ K-B3 49 PXP PXP
42 Q-B3+ P-Q5 50 K-B3 B-K2
43 Q-Q3 PxB+ 51 R-B7 ...

For some reason I thought this was a draw. 51 P-R4! (Vejrosta) wins. E.G. 51 P-R4! PXP 52 K-B4 B-B3 53 KxP B-Q1 54 R-R6 B-K2 55 K-N4 and the pawn falls.

51 ... K-K3 52 R-B6+ Drawn

Notes by White.

THE STONEWALL ATTACK
by Mike Clingan

The Stonewall attack according to Master Ken Smith is an ideal opening for lower rated players. Mike Clingan won the first game in which he used it against a player rated almost 700 rating pts above him! He has used it 5 times since then and has yet to lose a game with it. C. Kozel

The Stonewall Attack is an aggressive opening which gives White a strong pawn center and prepares his heavy pieces for attacking Black's K-side. The normal position occurs when White has pawns on QB3, Q4, K3, and KB4. These pawns form a stonewall that aims at control of the K5 square. Its weakness is that the KP is a backward pawn that cannot be protected by another pawn and must be protected by a piece.

White develops his KN to K5, giving it great control over the center. His KB goes to Q3, giving it great range over the board and aiming at Black's K-side. White's QN goes to Q2 to control the hole on K4 and with the KB prevents Black from placing a Knight on his own K5 square. The Stonewall Attack has been referred to as a "murderous assault" or as one having menacing, formidable and smashing possibilities. When allowed by Black and properly executed by White, White's attack can quickly become both devastating and final. Here are a few variations that appear in tournament play. The ideal position for White will be shown in the first example.

FIRST VARIATION
1 P-Q4 ...

There is more than one way into the Stonewall, P-KB4, P-K3, and even P-QB3 will sometimes work. While 1 P-Q4 is the soundest, these others

have varying psychological effects on your opponent.

1 ... P-Q4 4 N-Q2 P-QB4
2 P-K3 N-KB3 5 P-QB3 ...
3 B-Q3 P-K3

Not only strengthening the QP but if ...P-B5, B-B2 keeps the Bishop on the strong diagonal.

5 ... B-Q2 6 P-KB4 ...

The shocker. White could have proceeded with 6 N-KB3 and played a regular Colle.

6 ... N-B3 8 N-K5 ...
7 KN-KB3 R-B1

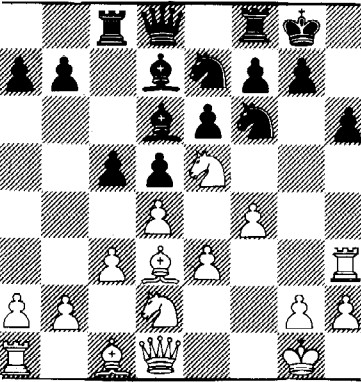
Planting the Knight in the center.

8 ... B-Q3 10 R-B3 ...
9 O-O O-O

Bringing the Rook into action.

10 ... N-K2 11 R-R3 P-KR3

Now White has great attacking chances. Efforts by Black to exchange the KN result in the freeing of the White QB which has thus far sat out the game. If the diagonal QB1-KR6 is opened at a favorable moment, a sac on KR6 may well end the game. White may accelerate his attack with P-KN4. Black, having played too passively is burdened with an inferior position.



SECOND VARIATION
1 P-Q4 P-Q4 2 P-K3 B-B4

Black prevents B-Q3 and the first variation.

3 P-QB4 ...

White opens up a diagonal for his Queen. We have now transposed into a favorable variation of the QGD for White.

3 ... P-QB3 6 N-B3 P-K3
4 N-KB3 N-B3 7 N-K5! B-Q3
5 PXP PXP 8 Q-N3 ...

White is much more active and has great attacking chances. Another way of handling this same Black move of B-B4 and one favored by Bent Larsen is:

THIRD VARIATION
1 P-Q4 P-Q4 6 P-KB4 P-K3
2 P-K3 P-QB4 7 N-KB3 B-K2
3 P-QN3 N-QB3 8 B-K2 O-O
4 B-N2 N-B3 9 N-K5 ...

This has the advantage of the second variation and the strength of the fianchettoed bishop. Some might feel the bishop is useless because of the pawn formation that blocks it. I prefer to think of the bishop as having great poten-

tial energy, like a compressed spring ready to burst loose. It is left to the White player to utilize this Basque motif to his advantage. White does spend several tempi preparing the fianchetto, and this delays his attack.

It should now be clear that the Stonewall Attack is just the kind of opening for someone who does not want to be burdened with endless study of openings and who desires a safe position, easily arrived at, that still offers White an active and even aggressive game. The White player should not, however, pass up chances to transpose into favorable variations of other openings.

For more information on the Stonewall consult How to Think Ahead in Chess by Horowitz and Reinfield and Baroque Chess Openings by Richard Wilcore.

LITTLE ROCK CHESS CLUB
CLOSED SICILIAN

(W) Tim Smith (B) Chuck Niggel
1911 1649

1 e4 c5 2 Nc3 Nc6 3 g3 g6 4 Bg2 Bg7
5 d3 d6 6 N/le2 Rb8 7 a4 b6 8 O-O
Bb7 9 f4 e6 10 g4? h5! 11 gh Rh5
12 Ng3 Rh7 13 Qe1 Qh4 14 h3 Nd4! 15
Nb5 Nc2 16 Qf2 Na1 17 Nd6+ Ke7 18
Nb7 Bd4 19 Be3 Be3 20 Qe3 Nc2 21
Qf2 Rb7 22 f5 Qg5 23 fg Qg6 24 e5
Rg7 25 Bb7 Qg3+ 26 Qg3 Rg3+ 27 Kh2
Rd3 28 Be4 Re3 29 Bh7 (on 29 Bc2
Re2+) Re2+ 30 Kh1 Kf8 31 Resigns.

LITTLE ROCK CHESS CLUB
ENGLISH OPENING

(W) Roger Martin (1877)
(B) Danny Williamson (1834)

1 P-QB4 P-QB4 15 NxN BxN
2 N-KB3 N-QB3 16 B-B4 KR-B1
3 N-B3 P-KN3 17 KR-B1 R-R2
4 P-KN3 B-N2 18 B-Q2 B-B3
5 B-N2 N-B3 19 B-B3 P-Q5
6 O-O P-Q4 20 B-Q2 B-N5
7 PXP NXP 21 P-K3 PXP
8 Q-N3 P-K3 22 PXP R-Q1
9 Q-N5 Q-N3 23 B-B1 QR-R1
10 NxN PxN 24 B-B3 B-N4
11 QxQ PxQ 25 B-Q2 B-B3
12 P-Q3 O-O 26 B-QB3 B-N4
13 P-QR3 B-K3 27 B-Q2 Draw
14 R-N1 N-Q5

Here Black has all the chances and should never agree to a draw. With both Rooks and both Bishops able to be hitting the K & Q pawns. White will have problems.

Roger Martin seems to enjoy endgames. Below he goes into an even endgame, wins a pawn, then turns it into a win with good technique.

LITTLE ROCK CHESS CLUB
KING'S INDIAN ATTACK

(W) Roger Martin (1877)
(B) Tim Smith (1911)

1 Nf3 Nf6 2 g3 c5 3 Bg2 g6 4 O-O
Bg7 5 d3 d5 6 Nbd2 Nc6 7 c3 O-O 8
Qc2 Bg4 9 h3 Bxf3 10 Bxf3 Rc8 11
a3 Qd7 12 Bg2 Rfd8 13 Nf3 e5 14 e4
de 15 de Qd3 16 Ne1 Qxc2 17 Nxc2
Ne8 18 Be3 b6 19 Rfd1 Nc7 20 Bf1
Bf6 21 b4 Be7 22 Be2 Rxd1 23 Rxd1
Rd8 24 Rxd8+ Nxd8 25 Kg2 Kg7 26 Rd2
f5 27 f3 Nde6 28 Bd3 f4 29 g4 b5 30
c4 bc 31 Bxc4 Nd4 32 Ne1 cb 33 ab
Ncb5 34 Nd3 Nbd6? (Bd6) 35 Nxe5 Nxc4
36 Nxc4 Nb5 37 Ne5 g4 38 h4 h6 39
hg hg 40 Nc6 Bf8 41 Bc1 Kf7 42 Bb2
Bd6 43 Kf2 Ke6 44 Ke2 Kd7 45 Nd4 Nx
d4 46 Bxd4 Bxb4 47 Bxa7 Ke6 48 Kd3
Kd6 49 Kc4 Be1 50 Bd4 Bh4 51 Kb5
Ke6 52 Kc6 Ke1 53 Bb6 Ke5 54 Kd7
Bd2 55 Ke7 Bc3 56 Bd8 Bb4+ 57 Kf7
Kd4 58 Kg6 Ke3 59 Kxg5 Kxf3 60 Kf5
Bd6 61 g5 Ke2 62 Bb6 f3 63 e5 Bc7
64 Bc5 Kd3 65 g6 Kc4 66 Bf2 1-0.

Presidents Report

Our last year was a very good year for Arkansas chess, due in no small part to The Chessman. In order to maintain our growth, I ask each of you to keep your ACA membership current. If your membership expires 6/80, please send in \$5 for a year's dues (\$4 under 19) by May 10. If your membership expires at a different time, I will send you a card informing you of your membership fee, as all ACA memberships are set to expire at the end of June.

Please send any tournament games to Craig Kozel; we need good annotated games for the Arkansas section.

LITTLE ROCK CHESS CLUB QUADS

(W) Conrado Mapili (1787)
(B) Paul Blacksten (1467)

1 PQ4 NKB3 3 PK4 BK2 4 NQB3 00
2 BN5 PK3

4...PQ4 would transpose into the French Defense.

5 PB4 PQ3 8 PQ5 PxP 11 QK1 PKR3
6 BQ3 QNQ2 9 PxP RK1 12 QR4! NB1
7 NB3 PB4 10 00 PQR3 13 BxKRP NN5

If 13...PxR 14 QxRP and Black has trouble getting his pieces over to the K-side.

14 BKN5 PB3 19 QRK1 BN2 23 QK4 RK1
15 PB5 PxR 20 NxB+ QxN 24 NR4! QxR+
16 QxN BB3 21 RK6 RxR 25 KxQ PxN
17 NK4 NR2 22 BPxR PN3 26 QxP+ 1-0
18 PB3 PQN4

GIUOCO PIANO

(W) Larry Barrentine (Unr)
(B) Duane White (1649)

1 PK4 PK4 7 NB3 NB3 13 BQ3 QxN
2 NKB3 NQB3 8 00 00 14 BxP+ KR1
3 BB4 BB4 9 BKN5 QK2 15 QR5 PxR
4 PB3 PQ3 10 NQ5 QxP? 16 BN6+ KN2
5 PQ4 PxP 11 BxN BK3 17 QR7 mate
6 PxP BN5+ 12 NN5 QB4

West Virginia

EDITOR'S COLUMN

Sorry for the long time between magazines. We got an overwhelming vote for The Chessman, but were too late to get into the January issue.

From here on it's clear sailing, as long as you the membership continues providing games, crosstables, etc. for publication. Thanks to Carl Kiser, in particular, things are progressing well. Remember to tell your friends that WVCA dues are only \$5 or for juniors (below 18) only \$3.

West Virginia will be represented in the National Chess League this year by the "Checkmates": 1 Dennis Funkhouser, 2 Joe Barker, 3 David Maples, 4 Cornelio Nolasco, 5 Donald Griffith, and 6 Mark Hathaway. More on the league later!

LABOR LOBBYIST

Charleston, WV November 11, 79
(W) T. Davis (B) C Jones

VIENNA GAME (by transposition)

1 e4 Nf6 2 Nc3 ...
2 e5 Nd5 is Alekhine's Defense.
2 ... e5

Thus a Vienna Game. Black could have played d6 with the idea of playing a Pirc Defense, or he could play d5 after which e5 would lead to a peculiar Alekhine Variation and e:d5 would be a Center Counter Game.

3 d3 Bc5 4 Nf3? ...

Better is 4 f4 d6 5 Be2 White doesn't have to worry about---Bxg1 Rxg1 followed by a check by the Black Queen at h4 because when Black moves his Knight at f6 to do Qh4+, White gets at least one move to prepare.

4 ... Ng4 5 d4 e:d4 6 N:d4 ...

This resembles the two knights defense reversed.

6 ... Qf6 8 Qg3 B:c3+ 9 b:c3 d6!
7 Q:g4 B:d4

This is good, it protects the c-pawn and opens the Queen Bishop line.

10 Bg5 Qe5 12 f4 Qa5 14 Qf3 Bf5?
11 Qe3 00 13 Qg3 Re8

Safer is 14...Na6 with the idea of Nc5 or d5 15 e5 Bf5 all leave Black a clear advantage in the long run, but for a few moves White will be safe from attack, because of the inability of Black's pieces to go K-side. It appears to me that because of the 2 or 3 aggressive moves Black got to play earlier his attitude is less objective than it needs to be.

15 Bd3 Qc3+ 16 Kf2 Qd4+ 17 Kg3 B:e4?

The final blow to an impressive game built on sound moves, it comes from the player with the advantage; and it only takes one bad move to lose.

18 Rhel d5 22 Q:e4 Qa3+ 26 Q:b7 Re8
19 Rad1 Qa4 23 Rd3 Qf8 27 Q:c7 Re3+
20 Be4 de4 24 Rd8 Nd7 28 Kf2 Ra3
21 R:e4 R:e4 25 R:f8+ Nf8 29 Be7 R:a2
30 Qc8 Resigns

MARSHALL UNIV. TORNADO

Huntington, WV October 20, 1979
(W) Russell Modlin (B) Norman Ahern

1 PK4 PK4 7 NB4 PQ4 12 QB5+ KB2
2 PQ4 NKB3 8 NK5 PKB3 13 BB4+ KN3
3 NKB3 NxP 9 PKR4 PxN 14 QK5 NQ2
4 NB3 NxN 10 QxR5+ KQ2 15 QN5 QxQ
5 PxN PK5 11 QxKP PB3 16 BxQ PQ3
6 NK5 PQ3 17 BQ8 mate

(W) David Schodlatz (B) Michael Weedon

1 PQ4 PQ4 4 QQ2 NB3 7 NB3 NR8
2 NQB3 NKB3 5 000 QNN5 8 PK3 NN6 mate
3 BB4 BB4 6 PQR3 NxP

GRUENFELD DEFENSE

(W) Brett Thompson (B) Mark Hathaway

1 d4 Nf6 4 e3 Bg7 6 Bd3 d:c4
2 c4 g6 5 Nf3 00 7 B:c4 c5
3 Nc3 d5

Black tries to break up the White pawn center while developing rapidly; this allows Nc6 next

8 00 Nc6 10 Qe2 Bg4 11 h3 ...
9 d:c5 Qa5

White wants the two Bishops, and to relieve some pressure.

11 ... B:f3 13 Qf4 Q:c5 15 e4 Nc4
12 Qf3 Ne5 14 Be2 Rfd8 16 B:c4 ...

Because Whites Q-Bishop is blocked in and Black is better developed White exchanges again.

16 ... Q:c4 17 e5 ...

Another exchange is set up, but this puts the White King Pawn in a vulnerable position.

17 ... Q:f4 20 Rfel Rac8 23 Re2 e6
18 Bf4 Nd5 21 Rad1 Rcd8 24 b3 Kf8
19 Nd5 Rd5 22 R:d5 R:d5

This starts a maneuver to attack the White KP

with everything and then with White tied up to infiltrate his back ranks.

25 g4 Ke8 26 Bg3 Bf8 27 Kg2? ...

This and several other "nichevo" (Russian for nothing) moves don't help White survive.

27 ... Bb4 30 Bg3 Bd2 33 f4 g5
28 Rc2 Kd7 31 Kf3 b4 34 Kf3 ...
29 Bh2 b5 32 Ke2 Bc3

If Ke3 g:f4+ 35 BxP+

34 ... Rd3+ 36 B:f4 Kc6 37 Re2 Kd5
35 Kg2 g:f4

The completion of my King maneuver.

38 Bg3 Rd2 An easy chance appears, so why not; he won't be able to protect his KP.

39 R:d2 B:d2 40 Bf2 a6

Not a5, because then the pawn would be unprotected.

41 Kf3 K:e5 45 g:f5 e:f5 48 Bc5 f3+
42 Ke2 Bc3 46 a3 b:a3 49 Kf2 Bd4+
43 Bg3+ Ke4 47 B:a3 f4 50 B:d4 K:d4
44 Bd6 f5 51 Resigns

PIRC DEFENSE AUSTRIAN ATTACK

(W) Carl Jones (B) Edwin Smith

1 e4 d6 4 f4 Bg7 6 Be2 c5
2 d4 Nf6 5 Nf3 00 7 e5 d:e5?
3 Nc3 g6

7...Nd7 looks much better.

8 f:e5 Nd5? Again Nd7 attacking the center rather than occupying it, looks better.

9 N:d5 Q:d5 11 d5 Bg4 13 Ng5 ...
10 c4 Qd8 12 Bf4 Nd7

Very good, this forces something; doesn't it?

13 ... B:e2 14 Q:e2 N:e5? Bad; how about h6?

15 B:e5 f6 17 Bc3 Qb6 18 N:f8 R:f8
16 Ne6 Qa5+ Black resigned

CIMARRON VALLEY OPEN

FRENCH DEFENSE

Feb. 16, 1980

(W) Stan Vaughan (2340) (B) Tom Amburn (2134)

1 e4 e6 4 ed5 ed5 6 Qe2+ Qe7
2 d4 d5 5 Bb5+ Bd7 7 dc5 ...
3 Nd2 c5

Possibly stronger is 7 B:d7+

7 ... Q:e2+ 9 Nb3 Bb6 11 Bd6 000
8 B:e2 B:c5 10 Bf4 Nc6 12 Bc5 B:c5

12...Bc7 seems to be a better alternative.

13 N:c5 Bf5 18 N:g6 h:g6 22 B:c6 K:c6
14 000 Nf6 19 f3 Kc7 23 Nd3 Re2
15 Nf3 Rhe8 20 Rhe1 Rde8 24 Rd2 Re8
16 Bh5 Re7 21 R:e7 R:e7 25 g4? ...
17 Nh4 Bg6

25 Kd1! is best.

25 ... g5 26 h4? ...

This still should have been prepared first by Kd1, but both sides have less than a minute to make the time control and "Blitz" krieg has taken over.

26 ... gh 28 Nb4+ Kc5 30 Rh2 Re3
27 g5 Nh5 29 Nd3+ Kc6 31 Kd2! Re7

If 31 R:f3 32 Ne5+ +-.

32 Rh4 g6 33 f4 Kd6 34 Ne5?? N:f4!

BONANZA in GAINESVILLE by Alan Tenan

On the weekend of January 26 and 27, Florida chess players were treated to a great tournament in Gainesville. In all, 115 players took part. The large turnout was the result of the excellent promotion job done by the tournament organizer, Jay King. Jay not only put up the prize money but also spent a lot of money on advertising the event. Ads were placed in *CL&R*, *The Chessman*, and local newspapers. Flyers were sent out to players across the state. In his effort to make the Florida Grand Prix a first class tournament, Jay spared no expense nor his own time. As a result, the Florida Grand Prix became a first class tournament.

Now on with the tournament. Registration was reminiscent of most large tournaments - a little bit too long. Although registration was supposed to end by 8:30am, players kept coming right up to 9:00. As a result the first round was delayed (isn't it always?). I would like to urge all players in the future to arrive during the posted registration time. As it usually turns out, the players who complain the loudest that a round is late, are the same ones who register late. I am positive I would never have made it through registration without the help of Jim Ledford, Lisa Stallworth, Jay King, and Dale Ames who also served as an excellent tournament director for the reserve section (under 1600).

Round 1

Due to the 50 plus turnout in both sections, pairings had to be accelerated and thus we had good fighting chess right from round 1. Top rated Fernando Durate (2264 Brazil) had to adjourn his game in a slightly better position against Larry Storch (1968). The slow time limit and the late start of the round resulted in several other adjournments on lower boards. Second rated, Tom Dejong (2240 Holland) suffered a loss to Tom Stiers (1953) who simply outplayed the Dutch Master. Meanwhile our third master, Dr. Walter Cunningham had been given a 1/2 point bye in advance. So going into round 2, the top three boards had amassed a total of 1/2 points (that being the bye).

Round 2

Round 2 also started slightly late but most of these games took less time than previous rounds. The big news came in the Reserve section where Marvin Parsons upset top-rated Dennis Davis (1579). Mr. Parsons continued his excellent play and finally ended up tying for second overall. In the Open section, Duarte and Storch sat down again for their adjourned game. After two more hours it had to be adjourned again! Further down the list of players was Bruce Koopmans (1919) who after two rounds had two adjourned games. It was agreed to finish all the adjourned games the next morning at 8:00am.

Round 3

The strain of the day started to show as many of the games seemed to be drawn early or were won quickly when an opponent would blunder. Top rated Fernando Duarte officially had only one point (his adjournment had yet to be finished) when he was paired with the tournament organizer Jay King. Jay is a very strong player in his own right and had already beaten two other opponents. It looked like Jay was going to upset the Brazilian Master. Jokes were going around that the reason Jay guaranteed first prize was because he was planning to win it, but Jay blundered and Durate jumped on it and the point.

Round 4

Gainesville, home of the University of Florida, appeared to live up to its nickname as "the #1 party school in the U.S." as many of the players arrived with very tired looks on their faces, but not one was complaining. As for the adjournments, Mr. Duarte finally found the winning line against Storch and

gained the full point. The most interesting adjournment was between Bruce Koopmans and Michael Lucente. Finally after a perpetual check driving White's King down to e6 and about 70 moves, the two agreed to a draw. On Board 1 Duarte outplayed Jacinto Pereira (1989). White on board 2 Steve Chachakis (2072) played Hugo Orizondo, a new player to the USCF who had beaten two 1900's and a 1500. In the end Chackis joined Duarte in the ranks of the undefeated. The big news came on board 3 where another foreign player, Hossein Zafarian, also new to the USCF, played Dr. Cunningham and after a very interesting game Mr. Zafarian upset the master.

In the reserve section four players had perfect scores 4-0, Mark Williams, Marvin Parsons, Karl Skjersaa, and Pete Dunkelberg hadn't played tournament chess since 1965.

Round 5

The reserve section pairings were Williams - Dunkelberg and Parsons - Skjersaa. Parsons and Skjersaa agreed to a quick draw guaranteeing each \$150. "Kool Karl" Skjersaa asked that he be paid as soon as possible because he had to buy something at a store before it closed. Jay King obliged by finishing his game in 8 moves and by paying Mr. Skjersaa. Karl returned a while later

ST. PETERSBURG Chess Club

540 4th Avenue North

ST. PETERSBURG, FLORIDA

OPEN 7 DAYS A WEEK

FRIDAY NITES AND SUNDAY

AFTERNOONS ESPECIALLY

with his "something". Whatever it was was in a brown canvas bag. When opened, the bag revealed a full grown boa constrictor that cost Karl, you guessed it \$150. When asked why he bought the snake, he replied, "I need something to keep my pet Python company". Now getting back to the tournament, it was about an hour later that Mark Williams posted his win for a perfect score 5-0, first place and \$225. Mark's performance indicates that he may not be able to play in reserve sections much longer, but he sure is making good use of it while he still can.

In the open section, the board 1 clash between Durate and Chachakis resulted in a draw. Only Zafarian could catch them with a win. He was playing John Pfeiffer (2101). Zafarian once again emerged victorious and tied Durate and Chackis with 4 1/2 points (only Tom Stiers was able to hold Zafarian to a draw). The three split the top three prizes and took home \$200 each. On tie-breaks it was Steve Chackakis who came in first with Durate in 2nd Top Expert was Mikel Peterson with a 4-1 score. Three players tied for top A with a 4-1 score: Tom Stiers (who came in 4th overall on tie-breaks) and Roger

Peebles who finally won a marathon game with Mike Tannenbaum to get into the money. Top B prize went to Robert Rodriguez also with a 4-1 score.

On a final note, I'd like to say I had a great time and that I'd like to thank Jay King. If it wasn't for him, the tournament would never have materialized. I'd like to also thank Dale Ames whose help was invaluable. A tournament as successful as this is a good thing for chess players and chess in general. As for myself I know I'm looking forward to any other tournaments that can match the "Florida Grand Prix".

ORGANIZING THE GRAND PRIX by Jay King

I decided to organize a large tournament when I became disappointed in the state championship's \$1700 prize fund for its 175 players. I wanted to (1) match or exceed the State Championship prize fund, (2) return a greater percentage of entries for the prize fund, and (3) play at a large tournament near home. Considering traveling and lodging expenses to a good tournament elsewhere I was prepared to accept some small losses. I figured my winning chances would be increased by playing in my home ground. The break between the two sections were determined by my rating at that time, when it was in the 1600's. First place was guaranteed to attract strong players and Class A was guaranteed for me to shoot for. My top priority was to have a large turnout. Therefore, I spent freely in advertising, which was nearly 90% of my tournament expenses. With voluntary support especially from the two tournament directors and Mr. Cantrell's generous cut in cost for book prizes I managed to keep my other cost down. Of the 120 players that registered, about half preregistered but several failed to appear reducing the total to about 115 active players. According to a survey, 50% responded to the "Chess Life" ad, followed by 20% group by direct mail.

EXPENSES

\$130	"Chess Life" 2 month ad
26	"Chess Life" ad placement
75	USCF rating fee
50	"Chessman" ad
40	newspaper ads 5 days
10	long distance phone calls
75	350 flyers and postage
60	operating expenses
\$466	Total
1700	Guaranteed prize fund
\$2166	Total so far

INCOME

Reserve entries	\$1161
Open entries	1130
Total income	\$2291

A \$135 difference - which excludes the necessary book prizes for the Reserve section. Due to the surplus I increased the variety of books for the Reserve section plus scorers and awarded a \$40 best game prize from the games submitted by the Open section. The game Cunningham - Zafarian was selected as the best game. Black's defense culminated into a force queen exchange combination.

SICILIAN DEFENSE

(W) Cunningham (B) Zafarian

1 e4 c5 2 Nf3 Nc6 3 d4 cd 4 Nd4 Nf6 5 Nc3 e5 6 Ndb5 d6 7 Bg5 a6 8 Bf6 gf 9 Na3 b5 10 Nd5 f5 11 Bd3 Be6 12 0-0 Bg7 13 Qh5 f4 14 c4 b4 15 Nc2 a5 16 g3 h6 17 gf ef 18 Kh1 Ne5 19 Rg1 Nd3 20 Rg7 Nf2+ 21 Kg1 Kf8 22 Rg2 Nh3+ 23 Kh1 Bd5 24 ed5 Ng5 25 Raql Qf6 26 Rfl Re8 27 Rgf2 Re4 28 Qd1 Rg8 29 Qd2 f3 30 Ne1 Rg4 31 Qe3 Qe5 32 Qe5 de 33 Nf3 Nh3 34 Resigns.

My responsibility as an organizer had an effect upon my playing. My games became violent. Each one of my games had at least one piece sacrifice, I have legitimate excuses

The Chessman Mar-Apr 1980

(don't we all) for my two losses. I had managed a superior position against Durate. I was getting hot. Somebody pointed out that everybody was getting hot, and the heat did not come from my position. After turning down some prankster's thermometer setting of 100 degrees in the top board room and settling some smoking complaint, I went back to my game and quickly made a terrible blunder. After the game master Durate, a visitor from the school of Mecking, later quoted "I had never been in such a horrible position in this line of defense ever in all my playing in Brazil." I earned a moral victory.

ENGLISH OPENING

(W) Jay King

(B) Durate

1 c4	Nf6	11 Qd2	Kh7	21 e4	f4
2 Nc3	d5	12 Bc5	Re8	22 gf	Rg6
3 cd	Nd5	13 a4	a5	23 f5?	R:g2!
4 g3	g6	14 h4	Nd5	24 K:g2	Qg5+
5 Bg2	Nb6	15 N:d5	e:d5	25 Kh1	Qg4
6 Nf3	Bg7	16 Nb5	f5	26 Kh2	Qf3
7 0-0	0-0	17 h5	g:h	27 Rh1	Be5+
8 d3	Nc6	18 Qc2	c6	28 Kg1	Nb6
9 Bg5	h6	19 Nd6	Re6	29 Rh4	Rg8+
10 Be3	e5	20 N:c8	N:c8	30 Kf1	Rg2

Several moves later White resigned.

Due to my running around, I lost to Rodriguez on time. With 15 moves to go I had already exceeded 7 minutes of the time limit. He noticed it on move 29 after I made it obvious by my speed chess playing and piece sacrificing.

There was a reverse toll upon my last game. Everytime I stepped out into the hallway, I was mobbed by prizewinners, demanding their cash. Due to my frame of mind I refused, but they stood over my game making faces. Subconsciously it affected my opponent. He yelled and dropped his Queen on move 8.

MOTORING THROUGH THE GRAND PRIX by Larry Storch

I was feeling pretty good Saturday morning. The Florida Grand Prix Tournament had attracted 115 players - many of whom were good friends of mine. I had planned to renew old acquaintances and get in some light hearted chess at the same time. After all, when you have a rating of 1968, you don't really have to play any serious chess until the second round, and I was having too much fun playing five minute chess with fellow Orlando club members Miles Ardaman and Otto Estenger. Suddenly a voice called my name from across the skittles room.

"Hey Larry, guess who you're paired with?" Somehow, I didn't need to be told. I would be paired with the top ranked player in the tournament, a Brazilian master named Fernando Duarte. What started out as a light-hearted weekend turned very serious. After 43 moves, we adjourned the game with Duarte holding an extra pawn in a rook and pawn endgame. I had a quick second round win and then it was back to the endgame. Again we adjourned as I sealed my 64th move. The position looked grim but I had slim chances to draw. Meanwhile, T.D. Alan Tenan, seeing that I had a chance to ward off one disaster, offered another - a third round pairing against yet another master - this time third ranked Walter Cunningham (2238)! This was definitely getting to be a long day. Cunningham and I entered a sharp Sicilian where the Gainesville master trapped my Bishop in the center of the board. I managed to create enough diversions so as to keep the hostage alive until reinforcements could arrive. Finally black allowed his prey to go free and a draw was agreed to on move thirty-five. This gave me time to go back to studying my twice adjourned endgame, but alas, the next morning, I succumbed on move 75. Duarte went on to become the tournament co-winner, while I finished a respectable 3-2. Next time I go to a tournament for a little fun, I'll check out the masters first and relax later.

SICILIAN DEFENSE

(W) Mikel Petersen (2078) (B) Peter Kurucz (A)

1 P-K4	P-QB4	2 N-KB3	P-Q3	3 P-Q4	PxP
--------	-------	---------	------	--------	-----

4 NxP	N-KB3	11 NxBP	Q-B3	18 Q-K6+	K-B1
5 N-QB3	P-QR3	12 0-0	R-M1	19 QxP+	K-K1
6 B-QB4	P-QN4	13 P-KB3	N-B4	20 QxP+	K-B1
7 B-N3	P-N5	14 B-N5	NxB	21 Q-B6+	K-K1
8 N-R4	P-K4	15 BxQ	NxR	22 R-K1+	K-Q2
9 N-KB3	B-N2	16 NxP+	BxN	23 R-K7+	1-0
10 N-N5	NxP	17 QxB	PxB		

(W) Tom Delange (1650)	(B) S.L. Persante	(A)			
1 e4	c5	8 c3	b5	15 Rf1	Be7
2 Nf3	e6	9 Bg5	Be7	16 Nd2	Bg2
3 d4	cd	10 f4	Nd4	17 Ne4	Bf1
4 Nd4	a6	11 Qd4	h6	18 Nd6+	Bd6
5 Bc4	Qc7	12 Bf6	Bf6	19 ed	Qc6
6 Bb3	Nf6	13 e5	Bh4+	20 Qg7	000
7 Qd3	Nc6	14 g3	Bb7	21 Resigns	

SICILIAN DEFENSE (W) L. Storch (1968) (B) Dr. Cunningham (M)

1 e4	c5	12 Qg3	Qa5	24 Rfe3	Bf6
2 Nf3	e6	13 Bf3	Rfd8	25 Na3	Be5
3 d4	cd	14 e5	Ne8	26 Re5	Nf6
4 Nd4	Nf6	15 Rael?	de5	27 g3	Ng4
5 Nc3	d6	16 Be5	f6!	28 R5e2	Re2
6 Be2	Be7	17 Qh3	Qb6+	29 Re2	Rd1
7 0-0	0-0	18 Kh1	Bf3	30 Kg2	Ra1
8 f4	Nc6	19 Qf3!	Qc6	31 Re6	Ra2
9 Be3	Bd7	20 Ne4!	f5	32 Nc4	b5
10 Qe1	Nd4	21 Nc3	Qf3	33 Nd6	Nf6
11 Bd4	Bc6	22 Rf3	Rd2	34 Nb5	Rb2
		23 Nb5	Rad8	35 Nd4	Draw

1980 ORANGE BLOSSOM OPEN by Mark Solomon

Florida chess players, REJOICE! Winter Haven is the latest city to successfully fill the chess activity void created by Tampa/Orlando/Miami. And what a success it was. Winter Haven's first-ever tournament, the 1980 Orange Blossom Open, drew fifty-five participants who braved the unknown, and then left this small Central Florida city hoping to soon return.

Being new to the tournament organization game, Winter Haven's "The Chess Club" encountered a few minor problems. The map to the tournament site was drawn starting from inside the city, but this didn't help me much since I couldn't even find Winter Haven! It was embarrassing to think that the TD would be late for the first round. Arriving at the site, my real problems began. The tournament announcement unintentionally gave the impression that there was an open and reserve sections when actually there was only one section and under 1600 prizes. I received a scathing from more than one irate lower level player. I would like to take this opportunity to apologize and add that neither "The Chess Club" or I meant to deceive anyone in any way. Despite these "first tournament jitters", Dr. Armando Jimenez and Don Bowen must be congratulated for organizing a first class event. Everyone agreed that the tournament conditions (temperature, noise level, lighting, comfort, hotel and restaurant access, prize to entry fee ratio) were of the highest quality, and all asked Dr. Jimenez to stage another Winter Haven tournament in the near future.

Round 1

Using my referee's whistle, I easily got the players attention and was able to start the round only a few minutes late. Ten minutes into the round, half a dozen people came to me complaining that their opponent had not yet arrived. It struck me that the missing players had actually requested half point byes for the first round and the person handling pre-entries had failed to note that. Heck, it was Winter Haven's first try, next time, I think they'll know better. In the interest of saving time, I

just jammed these unmatched players together. One gentleman was understandably upset about this procedure, but after I explained that I wasn't going to change anything, he went on to beat his opponent and have an enjoyable tournament.

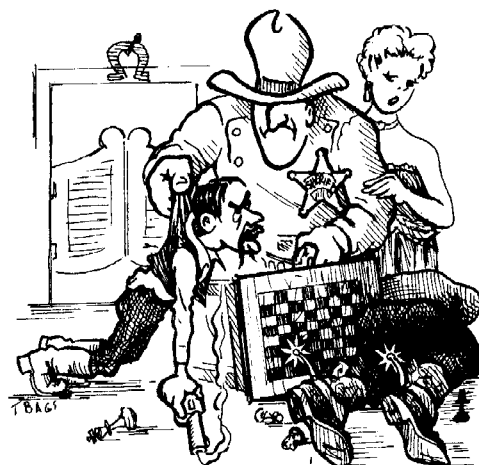
Although Hossein Zafarani was an unrated, I took the liberty of seeding him number one in the tournament since I had seen him obtain a 2256 performance rating two weeks before in Gainesville, including a win over a 2238 and a 2107.

Frank Redway and his son, Frank Redway III, provided an invaluable service acting as by-breakers and guaranteeing everyone a played game. As everybody in Florida chess knows, Frank is the best TD around and I am looking forward to this years Redway-directed State Championship.

There were a minimum of surprises this round. Harry Ball (1245) defeated Don Hallman (1777) and Dr. Michael Carey (Unr) beat Edwin Faust (1574).

Round 2

For some unknown reason that only Don Bowen could explain the Orange Blossom Open was scheduled in the same weekend with the Orange Blossom Parade. The biggest event of the year in Winter Haven, the city must have doubled in population! Fifty bands, cheerleaders, B'hai Shriners, clowns, jugglers, and other assorted non-coms marched down the people-lined street and past the tournament site. They ALL wanted



"We wuz jus playin a friendly game o' chess sheriff, an' then 'e says, 'DRAW!'"

to use the bathrooms in the building and I finally had to throw them out and lock the doors. Actually, while the parade was evident from the skittles room, it was barely noticeable from the tournament room.

There were a few more upsets this round. Gene Cauley (1321) beat John Mobley (1664), John Linder (Unr) defeated Cliff Nahas (1509), Edwin Faust was tripped up a second time by a Winter Haven newcomer, Arturo Perez (Unr), and Kool Kowboy Karl Skjersaa (1475) roped Jim Ledford (2018) for half a point.

Round 3

The parade was over by now and the town had cleared out. It was safe to unlock the doors. The unrated players continued to make their presence felt, with Danny Gonzalez (Unr) defeating Paul Mitchell (1416) and Gerald Smith (Unr) blanking Don Hallman.

Round 4

Since the strong players were beginning to

slug it out among themselves, draws increased and the chance of a perfect score vanished. The lone upset was Paul Tomalino (1772) splitting the point with Gerald Smith.

Things were slow down at the OCC because everyone was playing at Winter Haven, so Larry Storch, Miles Ardaman (the blond blitzer), and Scott Smith paid a visit to the tournament. Larry took pictures (which will hopefully appear in *The Chessman*), Miles whipped all challengers in speed chess, and Scott bailed a participant out of a bye.

Round 5

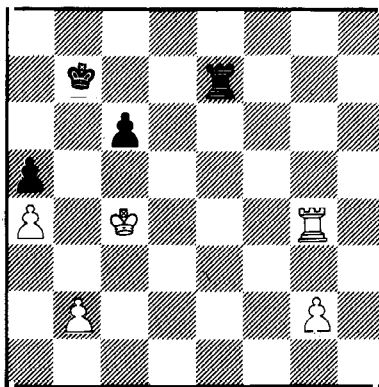
When the dust settled, Thomas Benham (1979) from Atlantis and Bruce Koopmans (1919) from Rochester, N.Y., emerged as co-champions. Benham won a see-saw battle from Michael Goodman (1729) and Koopmans blitzed Zafaranian (game below). Jay King won a piece from Otto Estenger (1698) in the opening only to hand it back 30 moves later. This costly error dropped King and Estenger Jr. into a five way tie for third along with Bob Persante (1815), Jim Ledford, and Harold Alford (2050). Gerald Smith and Donald Craig (1560) tied for first prize under 1600, while Dr. Armando Jimenez, Noni Vianzon (1380), Bob Canright (1426), John Krue (1449), J. Paul Ramas (1462), Clifford Nahas, John Riola (Unr), and Edwin Faust formed a logjam for third.

Conclusion

The new players on the tour to watch out for are Hossein Zafaranian, Gerald Smith, and Dr. Armando Jimenez. I would like to thank Dr. Jimenez and Don Bowen for organizing the 1980 Orange Blossom Open, Mr. and Mrs. Bowen for putting me up in their lovely home, Gil and Flora Cantrell for offering their chess wares and John "J.D." DeMassimo for assisting me with the tournament chores. Finally, Arturo Perez and Ronald Mastronardi can bring their girlfriends to my chess tournaments anytime! If nothing else, they are two great reasons to see you in Winter Haven next time!

1980 ORANGE BLOSSOM OPEN KING'S INDIAN DEFENSE

(W) Koopmans (1919)	(B) Zafaranian (M)
1 c4 Nf6 10 Be3 f5 20 Rf1 Kg7	
2 Nc3 g6 11 Qd2 Rf7 21 d6 cd	
3 g3 Bg7 12 f4 Nf6 22 g4 d5	
4 Bg2 0-0 13 fe de 23 gf gf	
5 d4 d6 14 Rad1 Ng4 24 Nd6 Qg5	
6 e4 Nc6 15 c5 N:e3 25 Q:d5 Qe3+	
7 Nge2 e5 16 Q:e3 fe 26 Kh1 Q:e2	
8 d5 Ne7 17 R:f7 K:f7 27 Qf7+ Kh8	
9 0-0 Nh5 18 N:e4 Nf5 28 Qf6+ Kg8	
19 Qb3 Bh6 29 Bd5+ Resigns	



White has the active Rook and threatens to play b4, obtaining an outside passed pawn. However, he must time his advance so Black has no possibility of activating his Rook, i.e. 1 b4? ab 2 Kb4 Re2!=(Inexperienced players should play this line out to convince themselves that this kind of defense does in fact draw, as it is a common strategem in Rook endings). White first move forces Black's Rook to leave the e file

1 g3 Rd7 2 b4 ab 3 Kb4 Re7

3...Rd3 fails as the Rook is too close to the White King to maintain checking distance i.e. 4 a5! Ka6 5 Rg7+. But 3...Rd5! activates the Rook and gives Black excellent drawing chances after 4 Rg7 c5 5 Kc3 Re5. One should be on the lookout for this sort of break before the bind sets in.

4. a5 Ka6 5 Rg6 Rb7 6 Ka4 Rc7 7 g4 Ka7

The most stubborn. Kb7 would deny the b-file to the Rook.

8 Rg5 Re7 9 Kb4 Rb7 10 Kc3 Triangulating in order to gain a tempo.

10...Ka6 11 Kc4 Ka7

On 11...Rf7(Re7? 12 Kc5 Ka5 13 Kd6+ there occurs 12 Kc5 Ka5 13 Kc6 Kb4 14 Kd6 Kc4 15 Ke6 Ra7 16 Rd5! cutting off the King 16...Rd1 17 Rd7 and wins (check this)).

12 Rc5 time pressure. Better Rg6 immediately

12...Rf7 13 Rg5 Rb7 14 Rg6 Rc7 15 Kc5 Kb7 16 Re6! zugzwang.

16...Rd7 Of course 16...Rc8 17 Re7 Ka6 18 Rg7 and if ...Ka5 19 Ra7 mate.

17 Rc6 Rd2 18 a6 Ka7 19 Rc7 Cashing in 19...Ka6 20 Rg7 Rc2 21 Kd5 Kb6 22 g5(1-0).

Chess O.O

To start off with, I'd like to remind everyone of the 8th NC Scholastics in Marshville on Apr. 12-13. Complete details are in the tournament announcements. Any questions should be directed to Joe Stegall, who has put together the best bid ever. All NC players should spread the word to the schools and encourage as many as possible to attend.

Two NC players are taking part in a special postal match with the USSR. William Bickham of Ashville and Norman Iornstein of Southport have both been selected to be on the US team of the top 50 postalites.

The top fish award appears to have been a failure. I only received one game, and that a part of a game. Oh well back to the drawing board.

I inadvertently left off the list of active TD's Mike Williams, Rt 1, Skyuka Rd., Columbus, NC 28722. Also, Leroy Greenlee, 222 Mountain View Rd., Elkin, NC 28621 has now become a TD. I passed the exam, so I am a Senior TD.

After finally getting my address straightened out with everyone but the USCF(They have the right address but the wrong zip code) I'm going to have to announce another change. After May 7th, I'll be elsewhere. I don't know the address yet, hopefully I'll have it by the next deadline. Expect a delay in reaching me, since the Chapel Hill PO will be

forwarding a lot of student mail after that. I'll know by next issue if I get to stay in this room next year.

GM

Larry Christiansen will be making a sweep through NC in either April or May. Possible stops are: Chapel Hill, High Point, Ashville, Raleigh, and Rockingham. To find out if and when he's coming contact the local clubs in each of these.

Anyone interested in being a games editor for NC should write to me. Duties are to look through the games submitted, and pick out the best ones or parts of games which should be showcased. If you feel industrious, you can even put notes on them.

Please remember that memberships expire on the first of the month of the mailing label. If I don't have a renewal by about the 10th of even numbered months, you'll miss an issue.

Membership is 310, a slight drop which is mainly due to a technicality. Last issue's 318 figure was at almost the end of December while this figure is from early in the month so fewer renewals have come in. There is \$780.06 in the treasury and net worth after Chessman obligations is \$227.06.

Tom Galloway

WANT ADS

by Tom Galloway & Earle Morrison

Most of us have seen hard times at least periodically, alot of our readers are college students who need summer jobs. Therefore, if you have a job, particularly in data processing or a summer job *The Chessman* will publish it one time free(any reasonable job description) and for \$2 *The Chessman* will run a job wanted ad for any *Chessman* reader. Considering the dispersion of *The Chessman's* circulation you would almost have to be willing to relocate for the ad to be effective.

Tournament Reports

The DRAGON II was held in Raleigh, NC on Jan. 5th, 1980. The winners were: Greg Samsa (2002) 3-0 in the top section(2002-1602), will Foster in the second section(1400) 2 1/2-1/2, Robert Wells (1257) in the third section(1257-Unr) with a 3-0 score, and Robert Patterson(U) in the bottom section also with 3-0. This event was directed by Louis Cobb with Will Foster's assistance.

THE ASHVILLE FALL CLASSIC was held in Hendersonville, NC on November 17-18, 1979. In the open section, Greg Samsa(2202) won the \$ 125 first prize with a 4-1 score. Second place was taken by Lee Taylor(2121) with a 3 1/2-1 1/2 score for \$75. Top A was Charles Phillips (1864) whose 3-2 won him \$50. Winning \$30 for second A was William Bickham(1944) with 2 1/2-2 1/2. Tied for first and second B with 3-2 were Jim Hardy(1784) and Claude Corbett(1602). Each received \$ 0.

In the reserve section, Bill Adickes and Mike Williams (1586 & 1481) each received \$60 for their 4 1/2-1/2 scores which tied for first and second. Top D was Carl Horton with 3 1/2-1 1/2 who received \$40. Second D was George McGraw(1287) with 3-2 for which he received \$20. In a three way tie for first, second, E/Unr were Jerry Taylor (1185), Terry Burdett(1160), and Gary Spence (Unr) each with 3 1/2-1 1/2. Each received \$20.

THE FALL CLASSIC was sponsored by the Ashville CC and was directed by Herb Horton.

Late News

In the USSR Championship, 54 year old Ewfin Geller was first with a 11 1/2-5 1/2 score. Second was 19 year old former World Jr. Champion Arthur Yusupov. Tied for third were 16 year old Gary Kasparov, and Chaim Rashkovsky.

Yasser Seirawan won the Wijk aan zee tournament in the Netherlands by 1 1/2 points. Players included Korchnoi and Timman. I assume this was a Grandmaster norm, which if memory serves me correctly, would be his second, the

North Carolina

THE LOYAL OPPOSITION By Greg Samsa

To my mind, the main reason that the majority of players find the endgame difficult is that it is the phase of the game that most requires accurate assessment of positions. Not that it hurts to know what's going on in the opening or middlegame, but it has been my experience that one will usually be successful if he consistently follows a plan, any plan, no matter how unjustified. This state of affairs simply is not the case in the endgames.

In learning to assess rook endgames, one first needs a mastery of the basics, i.e. rook and pawn vs. rook. Smyslov and Levenfish's treatment in *Rook Endings* is the best I know of. It takes more than one reading and I always review that chapter before serious tournament play.

The other basic principal is that piece activity is paramount in this kind of ending. Weaknesses often can't be defended. The most active plan is almost always the correct one. In this month's example, Black misses his only chance to activate his pieces and is condemned to watch White transpose into a winning R+1 vs. R ending.

first in Lone Pine a few years back.

The US Junior Open is nebulous right now. UNC's site fell through, but as of Feb. 8th, no one has turned in a bid, so we are checking alternative sites a few miles from campus. I will know for sure next issue (sounds familiar doesn't it.).

ASHVILLE CHESS CLUB HISTORY By Neil Harris

Ashville has historically been the center of Western North Carolina's chess activities. A newspaper article of the 1930's reports a large turnout held at the local YMCA. In this period the late H.M. Woods of Ashville several times won the North Carolina Championship.

From 1945 through 1959 a well organized Ashville Chess Club held formal meetings and tournaments, and some of our players were active in various southern chess events. Our Ashville player of this era achieved Expert rating, had a line noted in MCO-9, and games published in CL and in CR.

The 1960's were fairly inactive, but the 1970's opened with a 7-1 win over the fine Spartanburg SC Club, and several tournaments were organized by Tom Nard, Editor of the Carolina Gambit. After another inactive period a reorganized Ashville Chess Club held ladder and club events, and under the direction of Wilder Wadford reached a peak of 40 members in 1976. After still another inactive period Herbert Horton reorganized the current Ashville Chess Club in 1979. A list of club members would include such players as Bill Bickham, Bill Adickes (The Grand Old Man of chess), Charles Phillips, Bob Eoff, Jimmy Hardy, Steve Herman, Carl Horton, Gary Spence and Neal Harris. The Ashville Chess Club is here to stay and to remain active in the 80's

ASHVILLE CHESS CLUB QUICK-5

Sept 15, 1979

QUEEN'S GAMBIT DECLINED

(W) E. DeGuzman Sr (1800)

(B) Charles Phillips (1836)

1 d4 d5 3 Nc3 Nf6 5 Bg5 Be7
2 c4 e6 4 Nf3 Nbd7 6 e3 Ne4

Although this system is playable, normally Ne4 is played after Black has castled and has played h6. Black might continue 6 e3 0-0 7 Bd3 h6 8 Bh4 Ne4! 9 Be7 Qe7 10 Ne4 de4 11 Be4 Qb4+.

7 Be7 Nc3?!

Better is Q:e7, if 8 cd Nc3 9 bc3 ed 10 Qb3 Nb6 11 Bd3 Be6 12 00 00 =.

8 Bd8 Nd1 9 Bc7?!

A better way to try for an advantage might be 9 Rd1 Kd8 with the better Bishop, Rooks and safer King.

9 ... Nb2 12 Bc4 dc4 15 Bb8 Rb8
10 c5 Nc4 13 c6 Nb8 16 Nc4 Ba6?!

11 a4 b6 14 Ne5 f6

16...Ke7 may be better.

18 Rcl Ke7 20 Na7 Rc7 22 Nb5 Rc6
19 Nb5 Bb7! 21 Kd2 Ba8 23 Rc6 Bc6

Black is a pawn down, but has a good Bishop and White has several weak pawns.

24 Rcl Kd7 25 f3?! Ra8 26 Rc4 Ra5!

This seems to equalize.

27 Nc3 Rg5 29 Rb4 Kc6 30 e4 h5?!

28 g3 Bf3

This removes an escape square for the Bishop

30...Ra5 may be better.

31 Ke3 Bg2 32 Rb2 Bf1 33 d5+! ...

Blocking the Rook from getting to the Q-side

The Chessman Mar-Apr 1980

and mobilizing the a-pawn

33 ... ed5 43 gh Rg4+ 52 Rb2+ Ka6
34 Nd5 b5 44 Kc5 Rh4 53 hg fg
35 a5 Bc4 45 Kd6 g5 54 Kc7 Rh7
36 a6 Bd5 46 Kd7 f5 55 Kc8 Rh2
37 a7 Kb6 47 Rc2 Rh7+ 56 d8(Q) Rb2
38 ed5 Ka7 48 Ke6 f4 57 Qf6+ Rb6
39 Rb5 Ka6 49 d6 g4 58 Qal+ Kb5
40 Re5 Kb6 50 d7 Rh8 59 Qb2+ Kc6
41 Rc6+ Kb7 51 Kd6 g6 60 Qc3+ Resigns
42 Kd5 h4

ROBATSCH-KINGS INDIAN

9/15/79

(W) E. DeGuzman (1800) (B) Bill Bickham (1850)

1 P-Q4 P-KN3 3 N-QB3 P-Q3 4 P-K4 N-Q2
2 P-QB4 B-N2

4...N-Q2 is generally assumed to be inferior because of 5 P-B4!; if P-K4 6 BPXP! PxP 7 P-Q5 yet maybe it's playable.

5 R-K3 P-K4 7 P-B3 P-KR4! 9 R-B2 N-N3
6 KN-K2 N-K2 8 Q-Q2 P-B5 10 P-QN3 B-K3

10...0-0 seems better.

11 0-0-0?!

11 P-Q5 is natural and seems good.

11 ... 0-0

11...P-QR4 seems better on this move & the next.

12 P-KR4 P-KR4? 14 NxP RxP 15 B-N2 RxB?!

13 P-N3 PxNP
Black should consolidate and defend against the coming K-side attack; 15 ...R-B2 or ... B-KN5 should be looked at.

16 QxR PxP 17 N-Q5 N3xN 18 KPxN B-N5

18...B-B2 seems better

19 QR-B N-B4? 22 K-Q B-K5 24 QxP+ B-N2
20 NxN BxN 23 B-K6+ K-R 25 QxQB Resigns
21 B-R3 B-R3+

MAROCZY BIND

(W) Bill Bickham (1850) (B) S Herman (1742)

1 P-K4 P-KN3 3 P-QB4 P-QB3 5 P-KR3 N-Q2
2 P-Q4 B-N2 4 N-QB3 P-Q3 6 N-B3 P-QB4?!

This seems to lose a tempo, N-KB3 or P-K4 are better.

7 B-K3 Q-R4 9 B-K2 0-0 10 0-0 PxP
8 Q-Q2 KN-B3

Releasing the pawn tension may be premature; we now arrive at a Maroczy Bind position.

11 NxP N-B4 12 P-B3 R-K1?!

12...N-K3 may be better.

13 KR-N N-K3! 14 P-QN4!

gaining space with tempo.

14 ... Q-Q1 15 P-QR4 P-QR3 16 P-R5! ...

Shutting down the QNP and preparing an outpost on N6.

16 ... B-Q2 17 N-R4 BxN 18 RxB ...

18 NxN PxN and then 19 RxB seems better.

18 ... Q-Q2 21 R-Q Q-B3 23 BxN BxB+

19 R-R2 KR-QB 22 N-Q4 NxN 24 QxB N-B3
20 N-N3 N-K1

After these exchanges White emerges with an advantage in space, more active Rooks and a centralized Queen, threatening pawns on the Q-side and a lasting initiative.

25 P-K5 PxP 28 R2-Q2 RxR 31 P-B5! Q-B3
26 QxP Q-B2 29 QxR P-N3 32 B-B4 R-N1
27 Q-K3 R-Q 30 PxP QxP+ 33 R-R1 R-R1

Black is condemned to a hard defensive posture as all of White's pieces seem very actively placed.

34 Q-K2 P-K3? Dropping a pawn.

35 RXP RxR 43 B-B4 N-B2 51 K-K5 P-N4
36 BxR N-Q4 44 K-K3 K-K2 52 K-B5 N-N2+
37 R-N5 Q-N2 45 K-K4 N-K1 53 K-B6 NxB
38 Q-B4 N-K6 46 P-B4 K-Q1 54 KxN P-R3
39 P-B6 Q-N3? 47 P-N4 K-B2 55 K-B5 K-Q4
40 Q-B5 QxQ 48 P-B5 KxP 56 K-N6 K-K4
41 PxQ N-Q4 49 PxKP PxP 57 KxRP K-B5
42 K-B2 K-B1 50 BxP KxP 58 K-N6 1-0

A HISTORY OF THE NORTH CAROLINA SCHOLASTICS By Larry Matthews

The first North Carolina High School tournament was held in April 1973 at Hickory High School. The original concept was proposed by Mark Tullis. TD's for the first tournament were Ray and Larry Hight. With 50 students competing for team and individual prizes, the awards went to: 1st team-Chapel Hill H.S., second team- Hickory H.S., third team-Winston Salem Reynolds H.S., first Junior H.S.-Kerr Lake, first individual-Greg Samsa, second individual-Mark Hutchison and Eric Dolstrom, first J.H.S.-Scott Tullis.

For 1974, the championship was moved to R.J. Reynolds H.S. in Winston-Salem. TD's were Roy Hight and William Haven. No exact number of students is available, but best estimates are in the forties. Winners were: first team-Alexander Central H.S., second team Reynolds H.S., first J.H.S. Jamestown H.S., first individual - Rex Demers, second - Eric Nielsen, third - Marty Knapp.

On April 12-13, 1975, the third scholastic championship was held in Lenoir at Hudson H.S. TD's Harry Osen, monitored the play of 46 players and 7 teams. Alexander Central H.S. became the first team to win two state titles. Following were: second team-Vance Sr. H.S., third - J.H. Rose H.S. Three individuals tied for the top honors: Mike McCann, Alan Cooley, and Jan Ludivinsky.

In April of 1976, the scholastics were held in Cary as East Cary Jr. H.S. hosted the tournament. Directing the largest tournament thus far with 10 teams and 61 students was Arthur Menius. J.H. Rose from Greenville finished first. Followed by Vance County H.S. and third McDowell Co. H.S. For the first time ever, a junior high school scored more points than one of the winning high schools as East Cary J.H.S. won first J.H.S., Top individuals were: first Allen Cooley of Reynolds (the first individual to repeat as top individual), second John Smithwick of Vance, third Pickard Wilson of Broughton. Top J.H.S. player was Robert Kaplan of East Cary J.H.S.

The tournament was held in Henderson in 1977 as Ray Hight and Vance Sr. were hosts. Arthur Menius was the director for 8 teams and 54 students. Competition for top team was the closest ever. Three teams tied with 13 1/2 points, but the following order was determined by tie breaks: First - McDowell Co. H.S., second R.J. Reynolds H.S., third Sanderson H.S., First J.H.S. Ken Lake, second J.H.S. - East Cary. Top individual prize went to Bob Dunn of Sanderson. Following was James Hardy of McDowell and Brooks Pierce of Rocky Mount. Newton Prince of Fuquay was the top Junior High player.

In April of 1978, the scholastics returned to the Raleigh area as Enloe Sr High was the host. Because of the massive publicity campaign for this tournament, Tom Galloway, TD, worked with 9 schools and a record 63 students Broughton H.S. led the way by scoring 14 points. Following were Fuquay and Durham Hillside with 11 each. Fuquay H.S. was second on tie-breaks. Top junior high school was again Kerr Lake J.H.S. under the leadership of Ray Hight Kerr Lake has won more titles than any other school. Placing second in the junior high div-

ision was East Union under the guidance of Joe Stegall. Top individual for this tournament was Brooks Pierce of Rocky Mount. Following Brooks was Bob Kaplan of Cary Sr. and Chris Kremer of Chapel Hill. Barry Latta of East Union was the Junior High individual followed by Alan Patrick of East Cary.

1979 saw the tournament return to Enloe Sr. High in Raleigh. Again there was an excellent field as Thomas Galloway directed for 16 teams and 55 players. Broughton H.S. was the class of the field as they gained a record 15 points. Placing second was Fuquay which beat out Chapel Hill H.S. on tie breaks. East Union Middle School clipped Ken Lake by 11 to 10 for their first championship. Leading the individual field was Nathan Hunt from Broughton, Arnold Tharrington of Hillside and Bennie Roberts of Warsaw. Top junior high was David Cheng of East Cary followed by 1978 winner Barry Latta of East Union.

For 1980, the 8th annual North Carolina Scholastics in chess will be held at East Union Middle School. Joe Stegall who has been actually involved in promoting scholastic chess in his area will act as host for his school Foust Hills. As always there will be tense moments and excellent chess played before the champions are crowned. Contending schools this year will include Ken Lake, Broughton, Fuquay, and Chapel Hill. With the move to the Charlotte area, there will probably be many schools that will compete that don't have tournament experience in the scholastic championship. Regardless of the outcome, the students will all have an enjoyable time and the sponsors of competing clubs will lose two nights sleep. Scholastic chess in North Carolina continues to grow and expand. A thousand "thank you"s to sponsors and adult directors who have given unselfishly of their time and energy. Ray Hight of Ken Lake and Joe Stegal of East Union have been instrumental in all. Recent directors of tournaments such as Arthur Menius and Thomas Galloway deserve special praise. My hope and desire is that all who read and learn of the North Carolina Scholastics and its 8 year history will want to stay, sponsor, or simply watch as the drama unfolds.

Larry has done much work in organizing and directing recent N.C. Scholastic chess events.

Anyone having information or crossables of the earlier scholastics should send them to Tom Galloway to be forwarded to Larry. The NCCA owes thanks to Larry for this detailed history of a major part of N.C. Chess.

Tom Galloway

COLLEGE CHESS IN THE 80s

by David Chu, President of ICLA

In order for future growth to occur in chess across this country, it is necessary that a strong base for such growth be laid among the young today. People who become interested in chess while in college usually retain that interest throughout their lives. Therefore, a stimulation of interest and participation in chess among those 18 to 25 years old, the vast majority of whom attend a college, university, or two-year community college is a key prerequisite for a growing chess community and a prosperous USCF in the years to come. The principal role to be played in this endeavor is by the local college CC.

Seven years of experience in college chess has shown me, however, that routine college chess club activities are insufficient to maintain high levels of interest and participation among college students. What college chess needs are more competitive matches with other schools. Such matches attract great interest among college students and are a source of good publicity for chess since they highlight the already intense traditional rivalries among colleges. Naturally, schools would like to participate in the prestigious national, regional, and state intercollegiate championships. However, structural constraints such as lack of money and time, limit the activity of college chess clubs to local

matches for the most part.

The Intercollegiate Chess League of America (ICLA) cannot hope to manage such local activities nation wide. As a national organization, the ICLA functions best at its own level; namely in organizing the two national championships: the Pan American Intercollegiate Team Championship and the Individual Intercollegiate Championship. The organization of local matches is best done at the grass roots level, i.e. by the schools themselves. This does not mean, however, that the ICLA cannot perform a useful function in helping local organizers or in initiating new programs. The ICLA is not a one-dimensional organization. We are planning a variety of programs with which to start the new decade of the 80's.

A NEW AGENDA FOR THE '80s

In order to aid colleges organize matches with other schools locally, the ICLA plans to create a COLLEGE CHESS CLUB DIRECTORY to send to all of its affiliates. The Directory will provide a list of colleges, the current name, address, and phone number of the contact person for each club, and other relevant data such as meeting times, the number of boards a club can provide for a match and so on. This information will greatly facilitate local college organizers in arranging matches with nearby schools.

Naturally, because of the prohibitive distances between most schools, even such a directory will have a limited use. Therefore, the ICLA intends to establish a new program of nationwide radio chess matches between schools. Nearly every college has a ham radio station. In cooperation with these radio clubs matches can be played quite easily with other schools across the state and even across the nation. Schools interested in this program will have a special listing in our directory to indicate this.

The primary function of the ICLA is to serve the interest of college chess. We believe that this is best done by promulgating interschool chess matches at the local level. But we need your cooperation! I therefore ask every college student, professor, and administrator reading this article to urge your college chess club, whether or not it is already an ICLA affiliate, to contact me at my address below in order to participate in our programs and to be listed in our DIRECTORY. I also ask that every college alumnus contact your former college chess club to indicate your desire that they participate in our programs. Your state has a number of colleges, universities, and community colleges. By strengthening college chess in your state today, you will be helping in a positive way to strengthen chess in your state and across the nation in the years to come. Inquires may be sent to: David W. Chu, 6-C Hogan Hall, c/o Carmen Hall, Columbia Univ., N.Y., N.Y. 10027.

Kentucky

GAMES FROM THE CINNATI-KCA MATCH IN CINCINNATI

By Alan Erlebacher

SICILIAN DEFENSE

DRAGON VARIATION

(W) Erlebacher (X) (B) Haas

1 e4	c5	11 h4	Rfc8	20 Qh7+	Kf7
2 Nf3	d6	12 Bb3	Ne5	21 Rh6	de
3 d4	cd	13 g4	Nc4	22 Rd7	b5
4 Nd4	Nf6	14 Bc4	0-0	23 Rg6	Qg6
5 Nc3	g6	15 Nb3	Qa6	24 Re7+	Kf6
6 Be3	Bg7	16 h5	Rac8	25 Re6+	Ke6
7 f3	Nc6	17 hg	hg	26 Qg6+	Kd7
8 Bc4	0-0	18 e5!	Ne8	27 Qf7	Kd8
9 Qd2	Bd7	19 Qh2	f5	28 Ba7	Resigns

10 0-0-0 Qa5

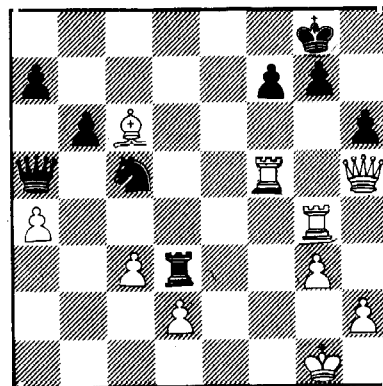
(W) Friend

(B) Hayes --I suppose this is Ray Hayes the former S.C. Champion.

1 e4	e5	4 ed	Nd5	7 Ne2	0-0
2 Nc3	Nf6	5 Bg2	Nc3	8 0-0	c5
3 g3	d5	6 bc	Bd6	9 f4	ef

10 Nf4	Qa5	15 Ra3	Ra8	20 Rh4	h6
11 a4	Na6	16 Rb3	Bd3	21 Bc6	Ne6
12 Qf3	Bf5	17 cd	Nc5	22 Rf5	Nc5
13 Nd3	Bg6	18 Rb4	Rd3	23 Rg4?	...
14 Ba3	Ba3	19 Qh5	b6		

23 Rg5 crushes



23 ...	Rd2	27 Qd2	Rd2+	30 Re5	f5
24 Qh6	Rd1+	28 Kf3	g6	31 Rb4	Kf6
25 Kg2	Qc3	29 Bd5	Kg7	32 Resigns	
26 Rh5?	Qd2+				

26 R: g7+ followed by Rg5 is much better. White must resign in the final position for when the Rook moves the White Bishop falls. An interesting game by one of the most famous chess players in America.-JEM.

NIMZO-LARSEN

(W) Dorf

(B) Bostrom

1 b3	e5	8 Nc3	Qe7	15 dc6	Nc6
2 Bb2	d6	9 Qc2	Re8	16 Bf7+	Kf7
3 e3	Nf6	10 Nd5	Nd5	17 Nd6+	Kg8
4 c4	g6	11 cd5	c6	18 Ne8	Qh1+
5 Nf3	Bg7	12 Bc4	Bd7	19 Kd2	Qh2
6 d4	e4	13 a4	Qg5	20 Qc4	Kf8
7 Nfd2	0-0	14 Ne4	Qg2	21 Ba3+	Ne7

On 21 ...Kd8 White has 22 Qg8+.

22 Ng7	Qf2+	30 Bf6+	Kf7	38 Bd8	Bf3
23 Qe2	Qe2+	31 Re8	Ke8	39 a5	Kg6
24 Ke2	Kg7	32 b4	Kf7	40 Be7	Kh5
25 Be7	h6	33 Bd4	a6	41 Bd6	g4+
26 Rc1	Bc6	34 Kf2	Kg6	42 Kh2	Be4
27 Rc5	Re8	35 Kg3	Kf5	43 Bf4	g3+
28 Re5	g5	36 Bb6	h5	44 Kh3	Bf5+
29 d5	Bd5	37 Kh3	h4	45 Kg2	Kg4

White resigned.

TOURNAMENT NEWS

Donaldson Wins 14th Queen City Open

Senior Master John Donaldson of Seattle won the 14th Queen City Open Tournament with a perfect 5-0 score. The tournament was held December 14-16, in Erlanger, Kentucky, by the Cincinnati Chess Federation. Fifty-five players participated in the tournament. Our congratulations to the CCF on a successful tournament.

Kentucky Chess Derby - The first Kentucky Chess Derby was held in August at the Univ. of Louisville. There was a four way tie for first between R. Bostrom, M. Dockery, C. Farley, and G. Klinglesmith.

Central Kentucky Chess Championship - was held in Lexington in September. There was a tie for first between C. Meidinger and T. Washington.

Fall City Open - Sponsored by the Louisville Chess Club, was held in October in Louisville. M. Dockery was the winner.

Berean College Open - Rob Bostrom won this November tournament.

Tennessee State Championship - Alan Erlebacher tied for first with Marty Appleberry in this Labor Day tournament.

KCA Winter Open - Dennis Gogel won with a perfect score 5-0, held Feb. 2-3.

SOCIAL NEWS

KCA President, Icy Loyall, has become Mrs. Bruce Gardner. The wedding was December 22nd at the Severns Valley Baptist Church in Elizabethtown, Ky.

At the Seventh Cincinnati Chess Federation Awards Banquet, Rea B. Hayes, founder of the first modern chess club in Cinn. in 1958, was named "Chess Man of the Decade." The award was a four-foot plaque in the shape of a chess king.

In Memory

John Miles has recently passed away. He was one of the nicest people in Kentucky. He never had a bad word to say about anyone and was liked by everyone. He will be missed by all who knew him.

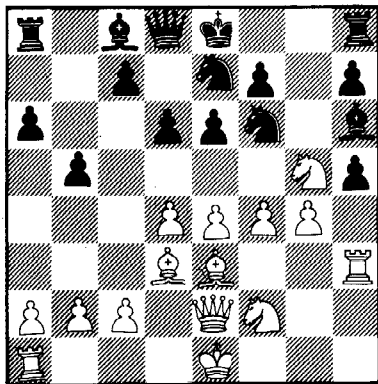
LOUISVILLE-CINCINNATI 9/29/79

(W) Tom Washington (1539)
(B) Carlos Bonnnin (1776)

1 PQ4 PQ4 9 NK2 00 17 000 QRB1
2 NQB3 BB4 10 NN3 BN3 18 NxN NxN
3 NB3 NB3 11 PB3 PKB4 19 NK5 NxQBP
4 BN5 PK3 12 QB2 PQB4 20 PxN QxRP+
5 PK3 BK2 13 PKR4 PQB5 21 KN1 RxP
6 BQ3 NK5 14 PR5 PxN 22 QR2 QN5+
7 BxB QxB 15 QxP BK1 23 QN2 RN6
8 PQR3 NQ2 16 QK2 N2/B3 And 0-1 in 34.

(W) Joe Rice (1907) (B) Don Ifill (1698)

1 e4 g6 6 Be3 Ne7 11 Nf2 Nh5
2 d4 Bg7 7 h4 Nf6 12 Rh3 Bh6
3 Nc3 d6 8 Bd3 a6 13 Ng5 Bc8
4 f4 Nd7 9 Qe2 b5 14 g4 Nf6
5 Nf3 e6 10 Nd1 Bb7 15 h5 gh



16 Nf7! Kf7 19 ef Re8 21 Rg3 Ng4
17 g5 Ng6 20 fg+ hg 22 gh
18 f5 ef 1-0 on move 44

BOGO-INDIAN

(W) Mike Thomas (1850) (B) Jeff Ginsburg-1911

1 PQ4 NKB3 17 KN1 PQR3 33 QN8+ KB2
2 PQB4 PK3 18 PN5 PQR4 34 QB7+ KN3
3 NKB3 BN5+ 19 QN3 RB4 35 RxP RQ4
4 BQ2 QK2 20 N2/B3 KRB1 36 RxR QxR
5 PKN3 PQN3 21 NxN RxN 37 QB2+ KB2
6 BN2 BN2 22 NB6 RxN 38 QxP QO8+
7 00 BxB 23 PxR QxP 39 KN2 QO4+
8 QNXB PQ3 24 RN1 NQ2 40 PK4 QQB4
9 QB2 QNQ2 25 QQ3 PQ4 41 PQR4 QN5
10 KRQ1 PQB4 26 QQ4 QQ3 42 QB5 QxRP
11 PQR3 00 27 QN2 QK2 43 PK5 QB3+
12 PQN4 PxQP 28 PxP PxP 44 PB3 PN3
13 NxP BxB 29 PK3 QK3 45 PK6+ QxKP
14 KxB NK4 30 QRB1 NB4 46 QxRP! QK7+
15 QRB1 QRB1 31 RxN PxR 47 KR3 QxRP
16 QR4 QN2+ 32 RxP! RQ4 48 QB7+ Draw

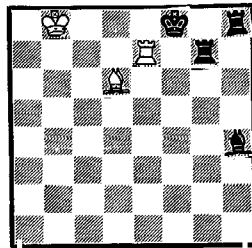
"KOLTY"

HAVE YOU HEARD about the man pensively sitting on a park bench. A Salvation Army girl approaches and wishes to know if he had been saved. "Indeed I was", says the man with a blissful smile. "It happened last night and I still can hardly believe it. I had neglected

castling and overlooked my opponents NxKBP; it cost me a pawn and the exchange, and I was in utter despair. But after a while I was lucky enough to get away with a perpetual. A ruddy miracle."

The girl seemed puzzled and somehow worried. She turned away in quite a hurry.

AND CAN YOU SAVE WHITE



White to move.

Solution somewhere!

YOU BE THE JUDGE...

The three defendants faced the cross-eyed judge. The judge asked the first defendant: "What is your name?" "John Doe" answered defendant No. 2. "Who's asking you anything" exclaimed defendant No. 3. "Thirty days," said the judge looking at no one.

Something like the above happened in the following blindfold game played in Reno, Nev. (W) G. Koltanowski (B) R. Jones

1 PK4 PQB4 6 BK3 BN2 11 KN1 PQN4
2 NKB3 NQB3 7 PB3 PQ3 12 PQR3 00
3 PQ4 PxP 8 QO2 PQR3 13 PKN4 RN1
4 NxP NB3 9 000 NxN 14 NK2 ...
5 NQB3 PKN3 10 BxN BK3

Does not care for P-N5.

14 ... QO2 15 PKR4 PKR4?

Should have considered 15 ...P-N5 here. 16 PxP Q-R5 17 P-N3 BxQNP, etc. After 16 ...Q-R5 17 N-B1 would be best.

16 PN5 NK1 19 MxB NxN 22 BxN PxN
17 BxB NxB 20 BR3 RB5 23 PK5 ...
18 NB4 KRB1 21 QO3 QB3

Eyeing P at KN6, and threatening Q6.

23 ... KB2 25 PQ7 RKB5 27 QxQ RxQ
24 PQ7 RKB5 26 QK3 QxKBP 28 KRB1 RB4?

28...RxR 29 RxR+ KN2 30 RQ1 KB2; gave drawing chances. Now he is lost.

29 PN3 PK4 31 PB4 PxP 32 PxP PK5
30 RxR+ PxR

If 32...K-K3 33 P-N6 RxP 34 RxR KxR 35 P-N7 wins.

33 PB5 PKG 35 PB7 PK7 37 NB6+ Resigns
34 PB6 KK3 36 PxR(N)+ KK4

If 37...KK3 38 PQ8(N) mates or if 37...KK5 P-Q8(Q).

BEATING THE CODE

In Ultra Goes to War (1978, McGraw-Hill) its author, Ronald Lewis, says that Harry Golombek, Stuart Milner-Barry and Hugh O'Donnel Alexander were very important members of the team which broke the Nazi Enigma code (referred to as "Ultra Secret").

In September, 1939, the British team for the International Chess Olympiad was in

Buenos Aires. It had just qualified for the final when the war broke out. "With visions of London in flames," Stuart Milner-Barry recalled, "most of us did not think we could go on playing chess." And so, on the blacked-out and unconvoyed Alcantana, which happened to be leaving Argentina on the night of their decision, the team returned safely to England--their only alarm coming from a porpoise which Milner-Barry, watchkeeping at night, had mistaken for a U-boat.

Had the ship been torpedoed, the whole course of World War II could have been changed. For the British chess team, composed of a group of talented and patriotic players, was later credited with a large part in one of the most critical undertakings of the war, the breaking of the NAZI Enigma code.

They were men of quality. Stuart Milner-Barry, an undergraduate at Trinity College, Cambridge, had been a British boy champion at chess and became president of the British Chess Federation. He later occupied high post in the British Treasury and was knighted. Alexander had obtained a first in mathematics at Kings' College, Cambridge. For a quarter of a century he maintained a position as Britain's leading chess player. The third of the remarkable trio was Golembek, a recognized international chess master, who represented Britain in no fewer than nine Olympiads, and who, like Milner-Barry, was later knighted.

MEMORY

During my lecture at the Elk's Club of San Mateo, I was asked how important memory is playing chess. I would say that it is of the utmost importance. Intelligence is another matter--but having intelligence HELPS!

It so happened that during the simultaneous exhibition preceding the lecture, I played 23 boards, and on one board my opponent lost in nine moves. The game was an exact replica of a game I had played blindfolded in a ten-board exhibition in Barcelona, 1936; and one that appeared in my book on Blindfold Play "Adventures of a Chess Master" had my opponent seen this game he would have remembered the mating possibilities in the arisen position. Here's the game:

PHILIDOR DEFENSE

(W) George Koltanowski (B) Karl Vogel

1 PK4 PK4 4 PxP BxN 7 QQN3 PQN3?
2 NKB3 PQ3 5 QxB PxP
3 PQ4 BN5 6 BQB4 NKB3

Better is 7...QK2; (Morphy-Duke of Braunschweig, Paris, 1879) Not 7...QO2 8 QxNP QB3 9 BQN5, etc.

8 BxP+ QO2 9 QK6 mate

This memory reminds me of the following story: The itinerant Jewish preacher came to town to preach again at the synagogue where he had spoken the year before. After the sermon, the preacher walked home with the synagogue president and asked:

"Mr. S., tell me--how did you like my talk?"

"I must say you have an excellent memory," the president said.

"Yes?" the preacher asked, ready for a compliment.

"From last year to this year, you did not change a word." Mr. S. said.

SOLUTION to "CAN YOU HELP WHITE?": 1 RB7+ KN1 2 RQB8+ KR2 3 RxR+ KxR 4 BK5 BN6 5 KR8 BxB Stalemate.

CHESSMASTERS FIND

GRUNFELD: I search until I find
NIMZOWITZ: I find as long as I search
TARTAKOWER: I find--always the bad lines.
CAPABLANCA: I do not have to find--I know.
ALEKHINE: When I find something good--I search for something better.

TAL: Find?...I move and my opponents find the wrong answers.

BOTVINNIK: So I find the good ideas...somehow they are not good enough against Tal.

SPIELMAN: New moves--new ideas--new tricks? just find the old ones, and you will be well.

THE PAN AM

The Pan American Intercollegiate returned to the west coast after an absence of 15 years and drew 42 teams and 187 players, the lowest attendance since 1967. Western colleges did not turn out in force; only 15 western teams competed compared to 14 back in 1964 (UCLA deserves credit for fielding 4 teams). Host school University of Southern California showed it cared much more about football than chess in providing a poorly lit playing hall and far less financial support than expected; but the players behaved very well despite adverse conditions. This small Pan Am was the strongest ever: 21 masters and 35 experts made up almost one third of the players (last year 15 masters entered). Fourteen teams were rated over 2000 led by Yale (2344), Colorado (2211), Toronto (2208) and Pennsylvania (2191). Defending Champions Yale, boasting IM Michael Rohde at first board, were the favorites; last year Yale had not only won all 8 of its matches but not lost any of its 32 games! Yale, Toronto, and Penn each had 3 masters. Four Soviet emigres were competing: Sergei Kudrin of Columbia, Leonid Bass of Purdue, Dmitry Agrachov of Colorado, and Andras Budinsky of Texas.

Yale's aura of invincibility shattered at the start when they lost a game while beating Texas at Austin 3-1. In round 3 Yale rested Michael Rohde against Florida and won the top two boards anyway, but then lost board 3 on time, and then board 4 also overstepped. All Florida had to do to tie the match was call the forfeit. But, to the amazement of a horde of spectators, the Florida player made 7 more moves, looking only at his own clock, and then offered a draw which was accepted with alacrity. While other teams talked of Yale luck the Floridian explained he thought Florida had drawn on Board 3 and the match had been lost whatever he did. Meanwhile some Yale rivals had their own problems. Colorado was upset at the start by UCLA C 2 1/2-1 1/2, Columbia fell to UCLA B 3-1 in the next round, Penn lost to both Rhode Island College and Chicago, while Toronto lost a tough fight to Purdue 2 1/2-1 1/2. Yale and Purdue both emerged with 4-0 records at the halfway mark and then Purdue (2063) held Yale to a tie to keep sharing the lead.

Purdue's moment of glory was brief as it lost 2 straight matches to Florida and Chicago. Yale repulsed Toronto, but then ran into a determined Minnesota team out to avenge their loss to Yale in last year's finale. Minnesota tied Yale and Peter Thompson drew Michael Rohde who was 5-0 before the match. That left Yale and Florida leading with 6-1 followed by Chicago and Minnesota at 5 1/2. All four schools had a chance at first as Chicago challenged Yale, and Minnesota met Florida. Minnesota was slightly higher rated but Florida won 2 1/2-1 1/2 with Chicago in a better position on the remaining board. Then time trouble hit both players, Todd Barre of Chicago offered a draw after he had moved and Steve Kaufman of Yale asked spectators if he could accept a draw after his flag fell (the answer of course is no) and he overstepped. Yale protested, claiming the draw offer was harassment. Chief TD Phil Chase ruled for Chicago and an appeals committee upheld his ruling. After Chicago's team had left Yale claimed Barre had repeatedly offered draws and the decision has been submitted to the USCF TD Committee for a decision. But, whatever happens Yale has been stopped and Florida is the new Intercollegiate Champion.

Ironically Florida was the only strong team that was weaker than last year, its former first board was not playing this time. Florida proved you do not need masters to win the Pan Am, they fielded 3 experts and a A player. Florida showed tremendous resilience in bouncing back from its third round fiasco against Yale. Greg Small (3 1/2-4 1/2), captain John Nardandrea (5 1/2-2 1/2), Steven Schonhaut (7 1/2-1 1/2), and Tom Lawhon (6-2) made up the championship team. Depending on the dispute

either Chicago or Yale is second with 6 1/2 and the other takes third with 6 match points. Chicago was led by a tremendous showing on first board by Kroll (6 1/2-1 1/2) who played 6 masters and did not lose a game; while Yales best score was made by Jon Tisdall (6-1). Toronto, the only team to beat Chicago, took 4th place with Ian Findlay (5 1/2-1 1/2) and Robert Morrison (5 1/2-1 1/2) leading their team. Other fine performances on top teams were turned in by Leonid Bass and Loren Schmidt of Purdue (both 6 1/2-1 1/2) and Peter Thompson of Minnesota (6-2). Rick Linden of Minnesota won his last 3 games all in crucial matches. Individual board prize winners were 1. Steve Odendahl, Swarthmore (7 1/2 - 1/2), 2. Jon Tisdall, Yale (6-1), 3. Steve Schonhaut, Florida (7 1/2-1 1/2), 4. Ian Findlay, Toronto (5 1/2-1 1/2), Alt. Michael Wood, Cal. Poly. (5 1/2-1 1/2). Class prizes were won by Rohde Isl- and A and UCLA B (shared top 1900s), R.P.I. (1800s), California-Davis, MSU B, and IIT (16-1700s), Michigan State C (1500s), and Navy (1400s). Caltech was top school with enrollment under 3000 and Illinois Valley Community College won the 2 year college trophy. Phil Chase directed, Harold Winston was chief assistant, and Mike Shields, Jim Galloway, Bob Sutter, and Bruce Kovalsky were parttime assistants. The new President of the ICLA is David Chu of Columbia University, his address is 6-C-5 Hogan Hall, c/o Carman Hall, Columbia University, NY NY 10027.

The Top Ten Teams

1 Florida	7-1
2 Chicago or Yale	6 1/2-1 1/2
3 Yale or Chicago	6-2
4 Toronto	6-2
5 Purdue	5 1/2-2 1/2
6 Minnesota	5 1/2-2 1/2
7 Columbia	5 1/2-2 1/2
8 Colorado	5 1/2-2 1/2
9 R.P.I.	5 1/2-2 1/2
10 Pima Community College	5-3

Harold Winston *

Pennsylvania

In comparison to last month's fairly negative editorial, this month has seen a few very positive things come to light. One of these was the recently completed Pa. Team Tournament, held at Cheyney State College over the Jan. 12-13 weekend. This was a tournament in which everyone came out happy. The college got a lot of good publicity, the PSCF picked up 32 new members, the tournament director (guess whom?) was able to direct a class B tournament (100 or more players), the players had an inexpensive place to play, and it was even finished at a reasonable hour. The last game looked a draw from around 5:00, but it was not settled as such until 6:45 or so. There were many upsets around, and the USCF even picked up 12 new junior members from a school that had never participated in rated tournaments before. A very successful tournament.

In addition, when you read the Jan. Chessman, note that for the first time, we are listing some tournaments in the Pittsburgh area. Please, everyone who reads this, let me know of any tournaments in your area, even if they are not rated. The PSCF can help only if we have the information to print. Getting it from CL is not a viable answer, due to time problems. Let me know your schedule as far in advance as possible. We will be happy to list all tournaments, as long as we have them. With West Virginia now receiving The Chessman, Pittsburgh and the western part of the state of the state can use the publicity. We are also thinking of listing tournaments planned for northern Delaware, as there is no Delaware Chess Association, and we do have a number of Delaware members in PSCF. (A team from that beautiful state won the team tournament).

My search for a future tournament site is now bearing fruit. With a bit of luck, the Germantown YMCA in Philly will become a site for smaller tournaments, perhaps such as CBM

tournaments, although there is also a possibility of using the Univ. of Penn. for them, too. The first tournament there drew 32 players. (went well..).

If your club is not listed in the club listing section, why not? Write to me with the information and it will be put in, free of charge. Just let us know, and let the club members know of the PSCF--that way, everyone will come out ahead.

A lot of people, including myself, are watching Bill Goichberg's experiment with awarding prizes based on final point results, not on placing in the tournament. So far, it seems to be profit-making, although not tremendously so. At least he is not losing money. Also, his handicap tournaments seem to be popular: over 20 played in one of them during the Jan. 25-26 tournament at the Philly Sheraton. With Bill bringing more and more tournaments into the Philadelphia area and giving PSCF members the \$2 discount for advanced entries, it is easy to see that PSCF membership is an economical way to play chess. I once calculated that if a player had played in all the tournaments in the Philadelphia area that give PSCF members discounts on entries, he would have saved over \$25.00 and also gotten a fine magazine along with that money.

I just finished reading the Feb. Chess Life, and I think we owe two people a bit of thanks. One is Gerry Dullea/Peter Prochaska (I usually think of them as a team as they work together so much and so well.) for the listing of The Chessman as the Pa. official publication with Earle as the editor (He is.) and then the other states with their publication in TC. Secondly, a thank you to Myron Lieberman for correcting the list of state delegates to include Bob Bat-off, whom I had left off the first list that was published in The Chessman earlier. Also, thanks to Myron, I remembered to include our two regional vice presidents, Jim Politowski and Bob Dudley. I forgot to list them last year. Of course, I didn't even know when I took office that I was supposed to send a list of delegates to USCF. Nobody told me those sort of things.

Along with several other states, Pa. will now honor out-of-state memberships for those tournaments sponsored by the PSCF in which PSCF members get discounts. For a long while, we have had a reciprocal agreement with N.Y. and Md., privately agreed to by the respective representatives. As of now, I will automatically extend that agreement to all states. This means that a player from N.J. who is a member of NJCA will get the same discount on PSCF tournaments that a PSCF member would get. However, a Pa. player who is a member of NJCA will not get that discount, as he should be a PSCF member from the start. So far, most states that have replied to my proposal like the idea, with the possible restriction of closed, invitational tournaments and possibly state championships. While I see no problem with someone out-of-state playing and even winning the Pa. team or individual championships (after all, the U.S. Champion need not be a US citizen), I can easily agree to that restriction for those states who wish to do so.

In closing, remember that we wish to list as many clubs as possible in places to play, and want/need games, crosstables, etc., from any and all tournaments held in our region. If our members from Delaware would also help out, send me material from there and we will also publish it. There is no Delaware chess federation right now, and we can provide some additional publicity for tournaments. After all, Wilmington is not that far from Philly (I know--I grew up in Newark and graduated from Christiana Sr. H.S. the first year it was open (June 64)).

Have to go now--hope to see you at some future tournaments.

VACATION in Atlanta
1980 US Open
August 3-15
Something For Everyone!

International Chess By BRUCE RIND

The most memorable game that I have ever played was in the 9th round of the Lloyd's Bank Tournament in London, 1978. I had White against Crouch (an English master) and it was mandatory that I win—that is, to get my 2nd IM norm.

QUEEN'S INDIAN DEFENSE

(W) Bruce Rind (B) Crouch

1 Nf3	Nf6	6 Nc3	0-0
2 c4	e6	7 d4	Ne4
3 g3	b6	8 Qc2	N:c3
4 Bg2	Bb7	9 Qc3	c5
5 0-0	Be7	10 Rd1	Bf6?
		11 Qc2?!	...

This move is on the right track, but was slightly inaccurate 11 Qd3 is better because after Black's forced 11...Nc6, White obtains a strong initiative with 12 dc bc 13 Qd7 Qb6 14 Bf4! The idea of the text move was Ng5 threatening mate and the QB.

11 ...	Nc6	15 Rd1	Nb4
12 dc	bc	16 Qa4	d5
13 Be3	Qe7	17 a3	...
14 Rd2	Rfd8		

I chased the N away with 17 a3 so that Black could not recapture on d5 with the N, putting my B on e3 in danger.

17 ...	Na6	19 h4	...
18 cd	ed		

19 h4 was played to give the B a square after 19...d4. Crouch took away the g5 post with 19 h6, but weakened his K-side in the process.

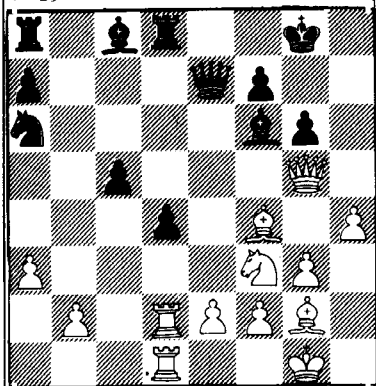
19 ...	h6	20 Qg4	...
--------	----	--------	-----

My proper reaction was 20 Qg4. After 20...d4 21 Bh6 Black could trap White's Queen with Bc8 & Qh5, g6!

20 ...	d4	21 Bf4	Bc8
--------	----	--------	-----

Black played 21...Bc8 thinking that the game would be drawn by repetition of moves from move 23 thru 27.

22 Qh5	g6	25 Qh6	Bg7
23 Qh6	Bg7	26 Qg5	Bf6
24 Qg5	Bf6		



27 Nd4!! ...

The move is tactically justified due to the disorganization of Black. The rest of the moves are more or less forced.

27 ... B:g5

If Black doesn't take the Q, but instead plays 27...cd then White wins back material with 28 Qb5!

28 Bg5	Qf8	30 Bf6!	...
29 Bd8	cd		

30 Bf6! is much better than Ba8? 30...Qd8f. Black was tied in knots after White's 30th move and resigned on move 35, being totally helpless.

30 ...	Rb8	33 Be5	Rb6
31 Rd4	Nc7	34 Rc8	f6
32 Rd8	Ne8	35 Rdd8	Resigns

A FAILURE OF WILL by Alex Dunne

The chess struggle is and has always been the clash of wills. Here in the decisive last round contest for first place, NY Master Ron Kenesek fights well until his will is encouraged, seduced, betrayed and finally crushed.

SCOTCH GAMBIT

ECO C44

(W) R. Kenesek (2228) (B) A. Dunne
Rochester 1980

1 e4	e5	3 d4	e:d
2 Nf3	Nc6	4 c3	...

Kenesek needs only a draw to tie for first at least. His choice of openings is highly sporting.

4 ...	d5	7 Be2	Bb4+
5 e:d	c:d5	8 Nc3	Ne4
6 c:d	Nf6		

The square d5 is critical in this opening. By this maneuver, Black keeps d5 away from White.

9 Bd2	B:c3	11 0-0	Na5
10 b:c3	0-0	12 Re1	...

12 Rb1! N:d2 13 N:d2 Q:a2? 14 Rd Qd5 15 c4 Qf5 16 g4 Qg5 17 f4 would win a piece, so Black would have to try...c6 when White has good chances to conquer d5.

12 ...	Re8
--------	-----

12...b5 13 Bd3 f5 14 a4 Nb3= Nyholm-Alekhine, Stockholm 1912. This is comforting to know now, but during the game I was out of my "book" on move 6.

13 Rcl	b5!
--------	-----

Now Black has a bind, but White has healthy development. This encourages White to take progressive steps.

14 Bf4	c6	16 c4?!	...
15 Ne5	f6		

Apparently breaching the center--16...b:c 17 N:c4! but White has been charmed into this faulty plan

16 ...	Qd8!	18 B:c4+	b:c4
17 Nf3	N:c4	19 R:c4	Qd5

Now the positional struggle comes back to d5, and it is Black who returns. Black has a slight edge.

20 Qa4	Be6
--------	-----

The c-pawn is guarded: 21 R:c6? Bd7+, but more important is that

the Bishop will soon occupy d5 with attacking chances against White's King. Now comes a collapse.

21 Recl?	Of5
----------	-----

Ouch! White must lose material.

22 Be3	B:c4	24 Q:c6?	...
23 Q:c4+	Kh8!		

Played quickly to gain some compensation for the exchange, but now comes the tactical execution.

24 ...	Rac8	25 Qa4	Nc3!
--------	------	--------	------

White resigns for mate happens after 26 R:c3 Qb1+ and 26 Qc2 fails to 26...Ne2+!

Penn Chess Tournament at Cheyney
by Dr. Roy Eikerenkoetter

The Cheyney State College Chess Team was host for a two day, five-round Penn State Chess Team Tournament that was held in Cheyney's spacious Ada S. Georges Dining Hall on Jan. 12-13, 1980. Sponsored by the PSCF, the Swiss System tournament drew 22 teams and 100 players from the Delaware Valley area and from as far away as Lewisburg, Pa. and Wilmington, Del.

The top prizewinner was the Delaware Blue Devils, whose members were Wayne Rohrich, Russell Haag, Dale Brandreth, Hugh Bender, and Leonard Thomas. Second place was taken by a Philadelphia team named "Our Best, We Think" and manned by Howard Daniels, George Kinsler, Steve Shutt, and Kevin Jiles. Trophies, plaques, and cash prizes were also given to the winners of the following categories: Top College Team-Bucknell Univ. Top H.S. Team -Upper Darby Top J.H.S. -Robert Vaux Top Elementary -Mighty Pawns (Douglas Elem.)

Cheyney's champion, Pete Rogers (2014), won all five of his games, the only first-board player to accomplish this feat.

Sixty-six of the contestants stayed overnight on Saturday, Jan. 12, in Yarnall Hall, and delicious meals were provided by Cheyney's snack bar in the Marcus Foster Student-Alumni Center.

Ira Lee Riddle, PSCF President, was the tournament director. Roy Eikerenkoetter organized and coordinated matters for the tournament.

GAMES FROM THE TEAM TOURNAMENT

SCOTCH OPENING

(W) Leonard Thomas (1781)
(B) R. Eikerenkoetter (1524)

1 e4	e5	7 Bc4	Ne7
2 Nf3	Nc6	8 Qf3	0-0
3 d4	e:d4	9 0-0	Ng6
4 N:d4	Bb4+	10 Nd2	Ne5
5 c3	Bc5	11 Qh5	d6
6 N:c6	b:c6	12 Bb3	Bg4!!

White Resigned

FRIED LIVER

(W) William Gaines (1251)
(B) Joe Cress (1190)

1 P-K4	P-K4	5 PxP	NxP
2 N-KB3	N-QB3	6 NxBP	KxN
3 B-B4	N-B3	7 Q-B3+	K-K1?
4 N-N5	P-Q4		

7 K-K3 is the move and the only way to hold the Knight.

8 BxN	Q	16 QxN+	QxQ
9 0-0	B-K2	17 NxQ	P-B3
10 Q-B7+	K-Q1	18 NxN	K-K2
11 BxN	QxB	19 N-K4	KR-KB1
12 QxP	B-B3	20 P-Q3	QR-Q1
13 Q-N3	B-K3	21 B-N5+	K-K3
14 Q-Q3+	B-Q4	22 BxR	Resign
15 N-B3	Q-B5		

BLACKMAR-DIEMER GAMBIT

(EUWE DEFENSE)

(W) Russ Haag (B) Sciarretta

1d4	Nf6	2 Nc3	d5	3 e4	de	4 f3	ef
5 Nf3	a6	6 Bg5	Be7	7 Bd3	0-0	8 0-0	Nbd7
9 Qe1	h6?	10 Bd2	Nd5	11 Qg3	Bd6	12 Ne5!	Ne5
13 de	Bc5+	14 Kh1	Kh8	15 Qh3	f5	16 ef	e.p.
17 Nf6	17 Bh6	e5	18 Qh4	e4	19 Bg5+	Kg8	20 Bc4+

Resigns.

QUEEN'S GAMBIT ACCEPTED

MODERN VARIATION

(W) George Kinsler -Vaux
(B) Russ Haag -Delaware

1 d4	d5	5 Nf3	e6
2 c4	dc	6 Bc4	Nbd7
3 Nc3	Nf6	7 0-0	Bd6
4 e3	Bg4	8 Re1	...

Usual is 8 e4 and e5.

8 ...	0-0	12 Nf7	Bd1
9 Be2	e5	13 Nd8	Rad8
10 de	Ne5	14 Rd1	...
11 Ne5	Be2		

White has cleverly won a pawn, but

14 ...	Ng4
--------	-----

Black now wins it back.

15 f3	Bh2+	27 Kd2	g5
16 Kf1	Rd1+	28 f4	h4
17 Nd1	Rd8	29 gh	gh
18 Ke2	Nf6	30 Ke2	c5!
19 Bd2	Be5	31 e4	b5
20 Bc3	Bc3	32 e5	c4
21 Nc3	Nd5	33 a3	a5
22 Nd5	Rd5	34 e6	b4
23 Rd1	Rc5	35 e7	Kf7
24 g3	h5!	36 ab	ab
25 Rd4	Rc2+	37 Kf3	c3
26 Rd2	Rd2+	38 Resigns	

NIMZO-LARSEN

PSCF GERMANTOWN

(W) DaBrady, Christopher
(B) Darryl Coleman 2/9/80

1 P-QN3	P-K4	23 PxB	B-B4
2 B-N2	N-QB3	24 P-Q5	B-B7
3 P-K3	P-Q3	25 R-Q2	BxP
4 B-K2	P-KB4	26 B-Q4	PxP
5 N-KB3	N-KB3	27 BxP	Q-B4
6 P-Q4	P-K5	28 R-K1	BxRP
7 N-Q2	B-K2	29 RxB	P-N6
8 P-QB4	0-0	30 RxB	RxR+
9 N1-B3	P-QR3	31 K-N2	R-R7+
10 P-B3	PxP	32 KxP	RxQ
11 BxP	N-KN5	33 RxB	Q-Q6+
12 BxN	PxB	34 K-N4	QxR
13 Q-K2	B-N4	35 BxBP	Q-N7+
14 0-0-0	R-K1	36 K-B5	K-B2
15 N-B1	Q-Q2	37 K-O6	Q-B3+
16 N-Q5	Q-B2	38 K-Q7	Q-B4+
17 K-N1	P-QR4	39 K-Q8	Q-K5
18 N-N3	N-N5	40 B-B4	QxBP
19 NxBN	PxN	41 P-O6	K-K3
20 P-K4	Q-N3	42 P-Q7	Q-B3
21 K-R1	B-B5	43 K-K8	QxP+
22 P-K5	BxN	44 Resigns	

Georgia

GEORGIA HIGH SCHOOL CHESS LEAGUE - 1980

This is the second season that the GCA has been requested by the high schools to operate a statewide high school chess league. We hope that the time and money expended by the GCA will encourage more high school players to join the GCA and to participate in other chess tournaments during the year. It is a fact that the more tournaments played in the better a player becomes. If a school wants to develop a strong team, the players need to start now playing in tournaments so that next year they will make it into the playoffs. I can not think of a single high school player that is active in tournaments whose rating is below 1400. I recently looked over the tournament crosstable from the 1976 Georgia High School Championship. Of the 6 players from that event that have remained active, we have one master, Tom Algeo, two experts Jim Vermilya and Mark Coles, and 3 class A players Jay Schneider now 12 years old, Allison Bert one of the top women players in the US, and Robby Close who is not really that active. Of the others all of them that were active through their senior year in high school became either class A or B players. So the best way to improve your game is by coming out to tournaments.

This season our league has 42 schools (up from 32 in 1979) that have entered. In the 5 areas where we have the greatest contraction of teams, we have set up regions with the regional champions coming to Atlanta on March 15 for a championship tournament. For those teams in widely disbursed areas, we hold special one day Saturday tournaments where 4 or more teams can meet and play a 3 or 4 round tournament. The winners of these also gets seeded into the playoffs. So far both North Springs and Atkinson County have won one day tournaments, seeding them into the playoffs.

For further information about next years chess league contact a GCA officer.

The league standings as of 2-7-79

South Georgia Region

Team	W	D	L	TOT
Thomasville Knights	1	0	0	1
Atco	1	1	0	1 1/2
Jeff Davis	1	1	0	1 1/2
Berrien	0	0	1	0
Swainesboro	0	0	1	0

Central Georgia Region

Pebblebrook	3	0	1	3
McEachern	2	0	1	2
Griffin #2	1	0	1	1
Douglas	0	1	1	1/2
Griffin #1	1	2	0	2
East Coweta	0	0	2	0

N.W. Georgia Region

Rockmart	1	1	0	1 1/2
Cedartown	1	0	1	1
West Rome	0	0	1	0
Calhoun	0	0	1	0

Metro #1 Region

Berkmar Red	4	0	0	4
Towers	2	0	0	2
Stone Mountain	1	0	0	1
Gordon	1	1	1	1 1/2
Southwest	1	0	1	1
Berkmar Blue	0	0	1	0
Heritage	0	0	3	0

Metro North Region

North Springs	2	0	0	2
Lakeside	2	0	1	2
Henderson	2	1	1	2 1/2
Cross Keys	1	0	1	1
Buford	0	2	0	1

As part of the chess league there are also elementary and junior high sections. Probably the two strongest schools in their divisions are Atco Junior High and the Hebrew Academy. Their two teams will be in a playoff with other elementary and Junior High Schools on March 8th at Northwoods Elementary School. Since their matches before March 8th are only practice it is hard to tell much, but Chapman Elementary of Woodstock and Forsyth County Middle school seem to be very strong. We also

know that last years strong Oakcliff 7th grade team is intact as 8th graders at Sequoyah High School and that Riley, Pace Academy and Westminster all have strong teams.

The success of this program depends on the cooperation of many people. The GCA wants to thank all of those parents, teachers and students that have become involved in this great project. Below are listed all of the match results submitted to the GCA by 2-7-80. Please make sure your teams results were submitted.

Central Georgia

Douglas	2	1/2	Rockmart	2	1/2
McEachern	2		Pebblebrook	3	
Pebblebrook	4		Griffin #1	1	
McEachern	3		Cedartown	2	
Griffin #1	5		East Coweta	0	
Douglas Co	0		Pebblebrook	5	
Pebblebrook	0		Berkmar Reds	5	
McEachern	3		Berkmar Blue	2	
Griffin #2	5		E Coweta	0	

N.W. Georgia

West Rome	0	Rockmart	5
Calhoun	1	Cedartown	4

South Georgia

Atco Jr High	3	Berrien Co	2
Jeff Davis	2 1/2	Atco Jr High	2 1/2
Whigham	0	Thomasville Kn	5
Swainesboro	2	Jeff Davis	3

Metro Atlanta

Hebrew Acad.	1/2	Lakeside	4	1/2
S.W. Atlanta	3	Griffin #2	2	
N.Springs	3	Henderson	2	
Henderson	3	Heritage	2	
Buford High	2	Chapman	3	
Atlanta Christian	1	Forsyth	4	
Towers	5	Atl. Christian	0	
Henderson	2 1/2	Gordon	2	1/2
Lakeside	1 1/2	Towers	3	1/2
Heb Acad.	1/2	North Springs	4	1/2
Berkmar Red	5	Gordon	0	
Heritage	0	Berkmar Red	5	
Gordon	3	S.W. Atlanta	2	
Cross Keys	5	Buford	0	
Chapman	0	Henderson	5	
Lakeside	5	Cross Keys	0	
Stone Mtn.	4	Heritage	1	
Berkmar Red	3	Griffin #1	2	
Otwell Middle	0	Chapman	5	

CHESSMAN TEAMS AT THE PAN AM

By Harold Winston

Five teams came to the Pan Am from Chessman states: Florida (2080), Penn (2191), Swarthmore (2012), PennState (1757) and Arkansas (1521). Florida was the sensation of the tournament winning 7 matches out of 8 to win the championship. Florida started with a 3-1 win over IIT and a 4-0 shutout of California at Northridge. After its 2 1/2-1 1/2 defeat by Yale it edged Southern California 2 1/2-1 1/2 and followed with a 3 1/2-1 1/2 crush of Baruch (1888). Florida finished strong with 3 big wins over tough foes: knocking Purdue out of a tie for strong Minnesota team (2090) 2 1/2-1 1/2 to win it all.

Penn had placed in the top 2 for 3 straight years and was 4th ranked at the start. They lost two key matches in the first half of the tournament to Rhode Island College A (1994) and then to Chicago (2092), the last by 3 1/2-1 1/2. Penn then rallied to win their next 3 matches and were tied for 4th with 5-2 going into the finale. They faced Toronto (2208), the other team with 5 and lost 2 1/2-1 1/2 to finish 11th and get a share of 10th place money. This just wasn't Penn's year. Their 3 masters, Tom Costigan, Rich Costigan, and Mark French all finished 4 1/2-3 1/2 as did their 4th board Robin Forman (1964). Swarthmore's result was a catastrophe for a team ranked 14th at (2012). Playing lower rated teams 7 times out of 8 Swarthmore could only score 3 1/2 match points. Senior Master Steve Odendahl did his best with a board winning 7 1/2-1/2 on Bd. 1 but the rest of the team lagged far behind.

Less was expected of Penn State and Arkansas. PSU had one glorious moment when they upset Southern Cal., 160 points higher rated. Penn State finished 3 1/2-4 1/2 led by Ken Naugle 5-3 and Jess Goodman 4-4. Arkansas tied Illinois Valley even though playing one

man short and their high scorer was Joe Bently 3-4. Arkansas was 38th rated out of 41 and constantly played stronger teams.

Frank Roemer now in Kentucky was re-elected ICIA Bulletin Editor while Mike Decker of Emory College, Georgia got another term as ICIA Faculty Advisor.

Chicago won the dispute with Yale so Chicago won the match 2 1/2-1 1/2 and finished 2nd with 6 1/2-1 1/2 while Yale was 3rd at 6-2

LETTERS TO THE EDITOR

Earle, At the tournament this past weekend, A couple of players wanted to know where they could buy Chess Life in Atlanta. The only place I know of is: The Bookworm, 7 Houston St. He also carries The Chessman maybe you could put this info in TC. Regards, Bacon.

Dear JEM

Your comments about high editorial standards don't apply to amateurs annotating their own games. Intuition tells me that there are only a few players in the world who can make triple !!! moves. Apparently most of them live in Georgia!!!!!!

Also- I have always felt that it was in Bad taste for an editor to punish his readers with the relentless publication of his own games. How do you spell relief???

All in all, I rate TC only fair. If the magazine were really good you wouldn't have the declines in GCA membership, etc. - and you wouldn't have to rely on captive or forced membership via state dues being attached to entry fees. Sincerely, Richard Haas

* * * * *
Single ! indicates a good move, !! indicates a winning move. In many games one player makes a winning move it may be simply PXR, not necessarily anything hard to spot. TC sees some moves that are far more than this Nd5 in Bruce Rind's game this issue is one of those, thus the !!! Bruce lives in Pa.

Most editors get to be editors because people enjoy their games, so not to print a game because it is yours is false modesty at its worst. This editor has not been accused of that. Frequently editors publish their own games because no others have been sent in.

The nature of economics is such that anything that goes up must come down. At one time the GCA membership was bigger than Ohio's or New York's much less Fl. or Pa., but the GCA became exhausted and then came the lean years. The Chessman came out before the peak and took the GCA up and then down or maybe didn't do anything to the GCA at all. In any case if TC could stop recessions in chess then economics would not be known as the dismal science.

Don't evaluate TC on the basis of some partial data that you might have, I am keenly aware of all the data and on the growth data TC is probably the strongest chess magazine in America, and I will predict that this trend will continue throughout 1980, now lets see. I will say this, however, I read and study alot of magazines, and in general I believe chess magazines are weak, relatively. A large portion of TC's circulation is forced as you call it, but a significant amount is not (see letter below), and that portion is growing fastest. -JEM.

Dear J. Earle,

As far as I am concerned, there is no "alternative" to The Chessman, a great publication. Keep up the excellent work. Enclosed you will find that I wish to acquire a 3 year subscription to The Chessman upon the expiration of my SCCA dues effective with your Nov 80 issue.

Regards Stan

PS Florida won't stand a chance vs. the 1980 edition of the Oklahoma State team at this year's Pan Am. Sorry Mark and Greg.

Dear Earle: ...I really enjoyed the last issue particularly the articles by Golchberg & Bert & the state divisions....

What do you think about having a TC editor meeting at the Open? (Fine-JEM)

...I agree with your standards. But also with

SC's editorial independence & disclaimer. By this I mean not libelous statements (what were they anyway?). But the expression of opinions which are not in agreement with yours. This hasn't come up with NC yet, but I would like it covered. I hope SC stays in, let me know what happens.

Tom Galloway

Rarely in TC is there an editorial that I agree with unless it is one of mine. For instance I think the editorial by David Chu in this issue is off target, and there was no reason to print it except obviously David is sincere and has given the matter some thought. Your editorial, "Viewpoint" seemed to me at the time, wrong. After some thought, however, I came to the "Viewpoint".

In re SC, they have decided to stay in TC. I think the key issue about an editorial is not what view is expressed, but has the writer done his homework, and is he responsible, or is he just "shooting from the hip", or taking a pot shot at some political opponent.

EMPIRE STATE JOINS CHESSMAN By Earle Morrison

Joe Lux, President of the New York State Chess Association and nationally known chess organizer, initiated talks which have resulted in an agreement for the New York State Chess Association joining The Chessman starting with the May-June 1980 issue. The New York State Chess Association is one of the oldest and most prestigious in the country and Chessman editor Earle Morrison felt this addition would significantly improve the quality of the magazine. Morrison will serve as the N.Y. State Editor.

Publisher Morrison noted with delight that this breakthrough into the rich New York market assured The Chessman of continuing success.

CLEARINGHOUSE REPORT

March 15 PSCF-CBM #7, Hatboro
March 22-23 Greater Pittsburgh Open
March 29-30 7th Tri-County Open, Hatboro
April 4-6 CCA Grand Prix, Philadelphia
April 12-13 State Scholastic, Gettysburg
April 19 Germantown YMCA #2, Philadelphia
April 19-20 Golden Triangle Open, Pittsburgh
April 26 Closed at Interboro J.H.S.
April 27 Penn-Jersey Spring Tornado, Morrisv.
May 3-4 West Chester Tournament
May 9-11 National H.S. Philadelphia National J.H.S.
May 10-11 CCA Grand Prix, Philadelphia
May 17-18 Bucks County Championship
Bucks County Jr. Championship
May 24-26 Tentative ECA Tournament, Phila.
June 14-15 Greater Allentown Open
July 2-6 World Open, Phila.
Aug 15-17 CCA Grand Prix, Phila.
Aug. 30 Sep 1 Pa. State Championship, St Coll.
Dec. 12-14 CCA Philadelphia.

TOURNAMENTS

Mar 28-30 FLORIDA HIGH SCHOOL CHAMP. FL 6-SS, EF: \$7, \$25 per team of 4 (same school). FCA Req'd \$3 (under 18). No other special memberships req'd. Tournament open to students grades 7-12.
Trophies: Top 6 individuals, Top 6 Team-of-4. \$500 expenses to Nat'l HS Tour. divided among top individual & top team.
\$2 book certificate to All plus scr
St. Petersburg Junior College, 66 Ave. North, St. Pete. FL: RDS 1&2 - 3000 moves per hour. RDS 3-6, 45 moves per 90 minutes, 30/1 thereafter.
RDS: 3/28 - 8 PM, 3-29 - 10-3-8, 3-30 - 10-3.
ENTER: FCA, H.S. Chess Champ., 4040-67th Ave. N. Pinellas Park, FL 33565. Sponsor-FCA.
Mar 29-30 7th TRI COUNTY OPEN Pa. Lolier Bldg; 404 South York Rd., Hatboro Pa. \$500 (Based on 60); \$100 guaranteed. REG 8:30-

9:30 AM PZ: (b/60) 1st \$250, 2nd \$100, A/B \$75, C/D \$50, E/F \$25 RDS: 10-2:30-7, 10:30-3:30, TD Ira Lee Riddle; \$10 if by 3/18, \$15 at site both \$1 off PSCF members. NS, ENT: Richard Kraft, 546 Coach Rd., Horsham, Pa. 19044.
Mar 29 SANDHILLS IV NC 3-SS in 8 man sect., TL 40/90, Richmond Co. Parks & Rec. Bldg., Rockingham. EF \$4. NCCA Req'd (Others ok). Trophies to 1st each sect.
REG: 9:30-10:30 RDS: 11-3-7. ENT: Thomas Allen, 1007 Hillside Dr., Rockingham, NC. 28379.
Apr 12-13 FISH OPEN III Ar. 5-SS, TL 45/2, Executive Motor Inn, 5 & Walnut, Pine Bluff, Ar. EF: \$15, Unr \$8 if by 4/15; \$3 more at site; free if 1st tour. St. \$5, Jr. \$3. PZ: (370/based on 35): 140/70, B,C,D,E,Unr. each \$40; Trophies to top 2, top B,C,D,E,Unr. RD: 8-9 AM, Rds: 9:30-2-7; 8:30-1:30. Enter: Donny Gray, Rt 8, 1645 Whipperwill Ln., Pine Bluff Ar. 71602.
Apr 12-13 ICI CLASSIC Ga. Save Inn-Midtown, 1152 Spring St. (I-75 & 14th), Atlanta, Ga. 30309. In 4 Sect.: Open, 5-SS, 45/2. EF: \$18 if by 4/5. PZ: \$200-100-75, Category I, II, III each \$100. Trophy to 1st. Reserve Sect. (Open to under 1400) 5-SS, 45/2. EF: \$17. 50 if by 4/5. PZ: \$170-85-70, Cat. V, VI/Ur. each \$100. Trophy to 1st.
ALL, REG: ends at 9:30 AM. RDS: 10-3-8, 10-3. QUADS: (Sat-Sun), 3-RR, 40/80. EF: \$7. Trophy to 1st each sect. REG: ends at 9:45, RDS: 10-1:30-5.
Scholastic: Open to all students, 4-SS, 40/1. EF: \$4.95 if by 4/5. Trophies (b/50) to Top 3, 1200, 1100, 1000, Unr, new player, JHS student, Elem student, 3rd grade/below, Top 3 4-man teams (must be 6 schools). REG: ends at 9:30 AM RDS: start at 10:15. Notice this sect. Sun only ALL: EF \$2 more at site. 1/2-pt bye for Rd 1 if requested in advance. St. \$5, HR 19-23, ICI
Apr 12-13 8TH ANNUAL NC SCHOLASTIC CHAMP NC 5-SS, TL 40/90, East Union Middle School, Box 666, Hwy 74 W., Marshville NC 28103. Open to full-time NC students in grades 1-12. EF \$5, USEF \$21, Jr. \$13, Part. Jr. \$8, if by 4/10; All \$1 more at site. \$25 to 1st, \$20 to Top 9 th grade/below, Top team \$30, Top 9th grade/below team \$25; Trophies to Top 3, Top 2 9th grade/below, Top 6th/below, Top Cat IV, V, VI (800-999), below 800, Unr. Female, Top JHS, Middle Sch., Top 3 teams. NCCA Req'd \$5, Jr. \$3. REG: 8:30-10 AM, RDS: 10:30-2:30-7, 10-2:30. ENT: Joe Stegall, c/o East Union Middle Sch, Box 666, Marshville, NC 28103 (704) 385-3114.
Apr 12-13 PA. SCHOLASTIC CHAMPIONSHIP Pa. Gettysburg Area Sr. High, Gettysburg, 17325. To be played in three sections. High School, 5-SS, 30/60. RDS: 10-2:15-6:30, 10-2:30. Trophies to top 3 teams, top 3 individuals. Jr. High (grade 9/below): same format as above. Trophies to top 2 teams & top individual. ALL EF: \$5 if by 5/5, \$6 at site. REG: 9:15-9:40. Top 4 scores from school count as team score. Enter: Joe Ohler, 236 W. Main St, Waynesboro, Pa. 17268 NS.
Apr 19-20 A.C.C. QUAD I NC 3-RR in quads, TL: 40/90, N. Ashville Community Center on Larchmont off Merriam Ave. EF: \$4, \$3 if by 4/11, ACC members \$2. Trophies to 1st ea. sect. NCCA req'd (others ok) REG: 8:30-9:30, RDS: 10-2:5:30. ENT: Neal Harris, Rt 2, Box 234, Old Fort, NC 28762.
Apr 19-20 GOLDEN TRIANGLE OPEN Pa Univ. of Pitt. Student Union, EF: \$15, REG: 9:9:45; 2 sects. OPEN: \$100 & Trophy, \$50, 25, B=50 & Trophy. BOOSTER (Under 1600) \$50, 25, D=50, E=50.
Apr 19 PSCF-GERMANTOWN YMCA #2 Pa Greene & Chelton Sts., Phila. In 2 Sects: Open: 3-SS (groups of 8), EF \$5, \$7 non-PSCF Mems. TL 40/1; PZ \$15-10 (per-sect.); RDS 10 AM then consecutively.
SCHOLASTIC: EF \$2, \$3 non-PSCF; TL: 30/30; Plaque to 1st; RDS: 10 AM then consecutively. until a winner is determined. TD Ira Lee Riddle Phone (215) 674-9049.
Apr 26-27 UNIVERSITY OF FLORIDA OPEN FL 4-SS, 30/90; Reitz Union, Univ. of Fl., Museum Rd., Gainesville 32601. EF: \$14 if rec'd by 4/16; \$16 at site. PZ: \$(500 b/56, top 3 GTD): 115-75-60, Category II, III, IV, V/VI/Unr. each \$62.50. St \$5, REG: ends 11:30. RDS: 12-6, 9-3. Enter ICI.
Apr 26-27 KENTUCKY CHESS DERBY Ky

Davidson Hall, Rm 303, Univ. of Louisville, Belknap Campus, Louisville. 5-SS, 40/90. PZ: \$500 Guaranteed, EF: \$14 if by 4/22, 15 at site \$1 off KCA mems., \$3 St to Ky residents. PZ: 1st \$150-100-50, A,B,C,D,E,Unr ea. \$40. REG: 8-9 AM, RDS: 10-2-6, 10-2. ENT: KCA, 1949 Roanoke Ave., Lou., Ky. 40205; Grand Prix Pts. 5.
Apr 26-27 BILLY WATT MEMORIAL NC \$900 Guaranteed! 5-SS, Bristol Rd. Center, Statesville NC. EF: \$8 if by 4/23, \$10 at site. 4 sects. 1600 & above, 1400-1600, 1200-1400 & under 1200. In ea. Sect. \$100-75-50. NCCA Req'd TL 50/2, RDS: 10-2:30-7, 9-1:30. ENT: Bill Wall Box 167, Stony Point, NC 28678.
Apr 26-27 DOGWOOD OPEN Ga 5-SS, TL: 45/2, Marriott Hotel; EF: \$12.50 if by 4/19; \$14.75 at site. PZ: (b/50) \$90-60, Top A,B,C,D,E,Unr. ea. \$50. REG: 8:30-9:30 AM, RDS: 10-3-8, 10-3. St \$5. ENT: Steve Hunt, 66 Maypop Lane, Decatur, Ga. 30035. NS.
Apr 26 APRIL SATURDAY QUADS Ga 3-RR, TL 30/30, Marriott Hotel. EF: \$5.50 if by 4/19; \$7 at site. Trophy to 1st. RG: 10-11 AM, RDS: 11-1-3. St \$5. ENT Steve Hunt (see above)
Apr 27 APRIL TORNADO Ga 3-RR, TL: 40/1, Marriott Hotel. EF: \$6 if by 4/20 \$7.50 at site. Trophies to top 2 ea. 6-man sect. RG: 12-1 PM, RDS: 1-3:30-6. St. \$5 ENT: Steve Hunt, (see above).
May 10-11 GEORGIA CHAMPIONSHIP Ga. 5-SS, 30/90; Open to ALL, but title & Trophy to the top Ga. resident or student! In 2 Sect. OPEN SECTION: EF: \$18, PZ: \$200-100-50, A=100 B/below 100, Trophy to 1st.
RESERVE SECTION: (Under 1600) EF: \$14. PZ: ((8450/45): 150-90, D, E/below/Unr. each \$70. Trophy to 1st. Both EF: \$2 more at site.
Trophy to top Chess Club of 5. St \$5, RG ends at 9:30; RDS 10-3-8, 10-4. Annual Business meeting 5/11 at 3PM; 1/2 pt bye if requested in advance. Enter ICI, Hotel Marriott.
May 10-11 JACKSON SHOWALTER MEMORIAL OPEN Ky 5-SS, Dunbar Community Center, 545 N. Upper St. Lexington, Ky. RG: 8-9:30, NS, RDS: 10-2-6, 9-11:40/90. EF \$12, Jr 10; before 5/3 \$2 off; Lexington CC \$1 off, PZ: \$325(b/40) \$100-50-25 A,B,C,D,E,Unr. \$25 each. Trophy to 1st. ENT: Showalter Memorial Open, c/o Parks & Rec. Dept. 545 North Upper, Lexington, Ky. 40508.
May 10 A.C.C. I NC 3-SS in 8 man sect. TL: 40/90; EF \$5, ACC mems. \$4, \$3 if by 5/2. RDS 10-2-6. PZ: \$25 to 1st each complete sect. All other details same as ACC QUAD I above (Apr 19).
Jun 21-22 KY STATE CHAMPIONSHIP Ky Ky residents only details will be announced.

IMPORTANT !!

ALL ICI Tournaments are:
ENTER: Thad Rogers, NTD
3055 General Lee Road
Macon, Ga. 31204 NS
The Marriott Hotel is at 246
Perimeter Center Pkwy. NE (I-285 at
Ashford-Dunwoody exit) Atlanta, Ga.
30346 HR: \$30 up to 4 in room

Subscribe Now
\$4
See pg. 2

Georgia

1980 ATLANTA CONGRESS/QUADS
Atlanta, Ga. January 5-6, 1980

Player	Rtng	Rd1	Rd2	Rd3	Rd4	Rd5	TOT
1 Mark Coles	1895	W40	W12	W6	W5		4
2 Dana Therrell	1905	W39	W26	W7	D3		3½
3 Joseph Scott	1889	W42	W22	W20	D2		3½
4 Tom Algeo	2207	W27	W15	D13	W14		3½
5 Mark Bohannon	1998	W28	W10	W19	L1		3
6 William Ruiz	2044	W24	W16	L1	W13		3
7 James Vermilya	2045	W30	W9	L2	W19		3
8 Wolfgang Schroeter	U	W17	W29	L14	W21		3
9 O. Al Hamilton	1806	W44	L7	W27	W24		3
10 Brian McCarthy	1753	W43	L5	W28	W25		3
11 Chris Ferrante	1881	W31	L19	W33	W22		3
12 Jay Schneider	1694	W45	L1	W39	W23		3
13 Jerry Wheeler	1948	W36	W38	D4	L6		2½
14 Bruce Frink	1922	W25	D21	W8	L4		2½
15 Jared Radin	1870	W32	L4	W30	D17		2½
16 Ulysses Martin	1776	W47	L6	D18	W33		2½
17 William Crowell	1595	L8	W50	D31	D15		2½
18 John Roberts	1543	L20	W49	D16	W34		2½
19 Ron Easter	1643	W48	W11	L5	L7		2
20 Michael Lucas	2002	W18	W37	L3	-		2
21 Eric Johnson	1731	W51	D14	D23	L8		2
22 Nicholas Cox	1659	W46	L3	W40	L11		2
23 Tommy Friedel	1478	D29	W35	D21	L12		2
24 Winston Kinsler	1547	L6	W47	W37	L9		2
25 John Beall	1502	L14	W51	L26	L10		2
26 Don Mullis	1715	W52	L2	W25	W46		2
27 Stuart Rachels	1582	L4	W32	L19	W43		2
28 Robert Stroud	1525	L5	W43	L10	W44		2
29 Robert Closs	1904	D23	L8	D34	W39		2
30 Tom Kayne	1547	L7	W44	L15	W45		2
31 Tom Rickert	1400	L11	W48	L17	W37		2
32 Bruce Raglin	1388	L15	L27	W52	W41		2
33 Ronald Radford	1316	D35	W41	L11	L16		1½
34 Jeffery Kidd	865	L38	W36	D29	L18		1½
35 Tim Brookshire	1839	D33	L23	D41	D36		1½
36 George Perry	1510	L13	L34	W50	D35		1½
37 John Smith, Jr.	1763	W49	L20	L24	L31		1
38 William Bacon	1736	W34	L13	-	-		1
39 James Rachels	1498	L2	W52	L12	L29		1
40 James M. Mingle	1463	L1	W45	L12	-		1
41 Richard Carpenter	1722	D50	L33	D35	L32		1
42 William Noyes	1418	L3	W46	-	-		1
43 Garland Black	1071	L10	L28	W48	L27		1
44 Mark Wirtala	1124	L9	L30	W51	L28		1
45 Brad Feldser	Unr	L12	L40	W47	L30		1
46 Val Graffa	Unr	22	42	W49	26		1
47 Dan Sisson	1120	L16	L24	L45	W50		1
48 James Taylor	Unr	L19	L31	L43	W51		1
49 Lacy Rich	1109	L37	L18	L46	W52		1
50 C.M. Culbertson	Unr	D41	L17	L36	L47		½
51 George R. Bell	Unr	L21	L25	L44	L48		0
52 Cassius Downs	Unr	L26	L39	L32	L49		0

SATURDAY QUADS							
1 Mark Dennett	1434	W3	W4	W2			3
2 Roger Hinkle	1419	W4	W3	L1			2
3 Henry Howland	1232	L1	L2	D4			½
4 Charles Loflin	1120	L2	L1	D3			½

SUNDAY QUADS							
5 Frank Sterra	Unr	W8	W9	W6			3
6 Garland Black	1071	W9	W7	L5			2
7 Herbert Arnold	747	Bye	L6	W8			2
8 Val Graffa	Unr	L5	Bye	L7			1
9 Aaron Spitz	Unr	L6	L5	Bye			1

1 Rex Blalock	1904	W5	D2	W3			2½
2 Bob C. Jones	1660	W3	D1	W4			2½
3 Frank Sterra	Unr	L2	W4	L1			1
4 William Noyes	1418	Bye	L3	L2			1
5 Gary King, Sr.	1601	L1	-	-			0

1980 ATLANTA CHAMPIONSHIP/QUADS
Atlanta, Ga. January 26-27, 1980

1 Randy Kolvick	2144	W22	W15	W11	W4		4
2 Tom Algeo	2200	W10	W9	D3	W5		3½
3 Mark Coles	1895	W24	W13	D2	W11		3½
4 James Vermilya	2045	W26	W19	W6	L1		3
5 John Smith, Jr.	1809	W28	W16	W12	L2		3
6 Ulysses Martin	1795	W25	W23	L4	W18		3
7 Tim Brookshire	1807	L23	W32	W17	W13		3
8 Darryl Marsee	1509	L12	W31	W19	D14		3
9 Robert Pentress	1710	W29	L1	W16	D10		2½
10 Tommy Friedel	1514	L2	W29	W15	D9		2½
11 Ervin Underwood	1858	W27	W17	L1	L3		2
12 Michael Lucas	2057	W8	W14	L5	-		2
13 Clall O. Wood	1564	W21	L3	W25	L7		2
14 Kevin Kennedy	1577	W31	L12	W23	L8		2
15 Don Mullis	1758	W32	L1	L10	W20		2
16 Bruce Raglin	1388	W30	L5	L9	W25		2
17 Tom Kayne	1558	W20	L11	L7	W24		2
18 Ronald Radford	1563	-	W28	W21	L6		2

CROSSTABLES

Player	Rtng	Rd1	Rd2	Rd3	Rd4	Rd5	TOT
19 Bob C. Jones	1649	W33	L4	L8	W23		2
20 James Taylor	Unr	L17	W26	WF	L15		2
21 Bill Prouty	Unr	L13	W22	L18	D28		1½
22 James Mingle	1499	L1	L21	D24	W31		1½
23 James Loflin	1213	W7	L6	L14	L19		1
24 Val Graffa	1282	L3	D30	D22	L17		1
25 Tom Lunaden	1038	L6	Bye	L13	L16		1
26 Michael Chenault	1429	L4	L20	W32	-		1
27 Randy Bullock	1276	L11	-	W29	-		1
28 Jeffrey Kidd	1260	L5	L18	D31	D21		1
29 George Bell	Unr	L9	L10	L27	W32		1
30 Alison Bert	1996	L16	D24	LF	-		½
31 Greg Lowery	Unr	L14	L8	D28	L22		½
32 John Beasley	Unr	L15	L7	L26	L29		0
33 Lawrence Ford	Unr	L19	-	-	-		0

QUADS							
1 Al Hamilton	1828	W3	D2	W4			2½
2 Richard Cohen	1901	W4	D1	D3			2
3 Allan Campfield	1595	L1	W4	D2			1½
4 Julien Ford	1488	L2	L3	L1			0

5 Allen Maull	Unr	W8	W7	W6			3
6 Milus Maney	1231	W7	W8	L5			2
7 Frank Sterra	987	L6	L5	W8			1
8 Val Graffa	1282	L5	L6	L8			0

9 Gary King	1688	W12	W10	W11			3
10 Julian Booth	1351	W11	L9	W12			2
11 Jack Gillooly	1308	L10	W12	L9			1
12 Arnold Castro	1231	L9	L11	L10			0

13 Frank Sterra	987	Bye	W16	W17			3
14 Milus Maney	1231	L17	Bye	W15			2
15 Marion McFarland	Unr	D16	W17	L14			1½
16 Charles Loflin	1120	D15	L13	Bye			1½
17 Paul Guthrie	Unr	W14	L15	L13			1

GEORGIA J.H.S. CHAMPIONSHIP
Atlanta, Ga. January 26, 1980

1 Jay Schneider	1742	W39	W7	W17	W4		4
2 David Campfield	1249	W33	D5	W6	W10		3½
3 Larry Perkins	Unr	D22	W34	W13	W11		3½
4 Bruce Higgs	1243	W38	W18	W16	L1		3
5 Anthony Dye	Unr	W34	D2	W12	D14		3
6 Charles Loflin	1120	W19	W20	L2	W16		3
7 Michael Miller	950	W32	L1	W24	W21		3
8 Ricky Hieap	1022	L30	W22	W31	W18		3
9 Jerry D. McNure	838	L20	Bye	W30	W17		3
10 P. Blumenthal	1120	W35	W15	D11	L2		2½
11 Todd Welch	1236	W37	W28	D10	L3		2½
12 Paul Guthrie	Unr	W23	D13	L5	W29		2½
13 Vic Gunter	1129	W31	D12	L3	W28		2½
14 David Nixon	1278	W36	L16	W32	D5		2½
15 Michael Scharff	1285	W21	L10	D22	W19		2½
16 Joseph Bean	933	W29	W14	L4	L6		2
17 Kerry Bell	1141	W26	W30	L1	L9		2
18 Bryan Greenwalt	Unr	W25	L4	W33	L8		2
19 Brian Gilner	Unr	L6	W25	W23	L15		2
20 Edwin Davis	Unr	W9	L6	L21	W34		2
21 Timothy Ward	Unr	L15	W35	W20	L7		2
22 Jay Sabine	807	D3	L8	D15	W35		2
23 Robert Paul, Jr.	889	L12	W26	L19	W30		2
24 Timothy Gains	Unr	L28	W36	L7	W33		2
25 Jimmy Nelson	Unr	L18	L19	W36	W32		2
26 David Held	Unr	L17	L23	W40	W39		2
27 Charlie Harper	1030	-	-	W38	W31		2
28 Jon Feinerman	956	W24	L11	D29	L13		1½
29 Kevin Hollowan	Unr	L16	W38	D28	L12		1½
30 Michael Gilner	Unr	W8	L17	L9	L23		1
31 Keith Molkner	Unr	L13	W39	L8	L27		1
32 Benjamin Blass	Unr	L7	W37	L14	L25		1
33 Eric Schoonover	Unr	L2	W40	L18	L24		1
34 Mark McCord	867	L5	L3	W39	L20		1
35 Mike Tyler	Unr	L10	L21	W37	L22		1
36 Billy Whitt	Unr	L14	L24	L25	W40		1
37 Jeff Thompson	Unr	L11	L32	L35	W38		1
38 Robb Jeffries	Unr	L4	L29	L27	L37		0
39 Andy Weatheres	Unr	L1	L31	L34	L26		0
40 Lorraine Taylor	Unr	-	L33	L26	L36		0

GEORGIA ELEMENTARY CHAMPIONSHIP							
1 Jay Schneider	1742	W25	W17	W4	W3		4
2 P. Blumenthal	1102	W12	W15	D10	W8		3½
3 Chuck Lovinood	1293	W18	W14	W5	L1		3
4 Todd Welch	1236	W22	W6	L1	W11		3
5 Cheaves Robinson	1129	W21	W11	L3	W12		3
6 Ricky Hieap	1022	W20	L4	W21	W13		3
7 Benjamin Blass	Unr	D8	W16	D17	W10		3
8 Peter Symbas	1054	D7	W24	W9	L2		2½
9 Jay Sabine	807	W13	D10	L8	W17		2½
10 Stewart Eads	1109	W19	D9	D2	L7		2
11 Brian Gilner	Unr	W24	L5	W22	L4		2
12 Michael Guard	Unr	L2	W26	W14	L5		2
13 Michael Gilner	Unr	L9	W25	W15	L6		2
14 Jon Feinerman	956	W26	L3	L12	W18		2
15 Bill Robinson	898	W23	L2	L13	W22		2
16 Derek Jones	795	L17	L7	W19	W21		2
17 Charlie Harper	1030	W16	L1	D7	L9		1½
18 Kevin Scharff	747	L3	D19	W24	L14		1½
19 Keith Molkner	Unr	L10	D18	L16	W25		1½
20 Noel Schmidt	Unr	L6	L21	W26	D23		1½
21 Mike Gimpel	Unr	L5	W20	L6	L16		1

Player	Rtng	Rd1	Rd2	Rd3	Rd4	Rd5	TOT
22 Danny Gimpel	Unr	L4	W23	L11	L15		1
23 Benji Gris	Unr	L15	L22	D25	D20		1
24 Matthew Eads	924	L11	L8	L18	W26		1
25 Charles Manser	776	L1	L12	L20	L24		0

GEORGIA J.H.S. TEAM CHAMPIONSHIP						
1	Atkinson Co.	4	7½	9½	10½	10½
	4,11,12,14,17,20					
2	Hebrew Acad.	4	6	9	10½	10½
	1,10,19,26,28,30,31,32					
3	Elbert Co.	2	5	6½	9½	9½
	5,13,23,24,29,35					
4	Swainsboro	1½	3½	7½	9½	9½
	3,7,9,25					
5	Troup Co.	1	4	5	6	6
	16,21,33,36,37,38,39					

Florida

Player	Rtng	Rd1	Rd2	Rd3	Rd4	Rd5	TOT
FLORIDA GRAND PRIX							
January 26-27, 1980							
Gainesville, Fl.							
1 Chachakis, Steve	2072	W12	W25	W8	W14	D2	4½
2 Duarte, Fernando	2264	W16	W32	W11	W10	D1	4½
3 Zafarani, Hossein U	1947	W50	D4	W18	W15		4½
4 Stiers, Tom G.	1953	W9	W29	D3	D5	W14	4
5 Petersen, Mikal	2078	W21	D6	W42	D4	W13	4
6 Foutch, Bob	1847	W40	D5	D23	W27	W10	4
7 Rodriguez, Robert	1769	W39	L27	W33	W11	W12	4
8 Peoples, Roger	1919	W41	W48	L1	W30	W22	4
9 DeJong, Tom J.	2240	L4	W17	D30	W28	W26	3½
10 Pereira, Jacinto	1989	W13	W28	W19	L2	L6	3
11 King, Jr., Jay C.	1944	W15	W20	L2	L7	W29	3
12 Maynard, Dewey	1930	L1	W54	W24	W25	L7	3
13 Coins, Steven	1865	L10	W53	W20	W23	L5	3
14 Orisondo, Hugo	Unr	W44	W26	W27	L1	L4	3
15 Pfeiffer, John S.	2101	L11	W52	W29	W19	L3	3
16 Storch, Larry	1968	L2	W43	D18	W31	D17	3
17 Sargeon, Andre	1930	D23	L9	W39	W36	D16	3
18 Cunningham, Walter	2238	Bye	W31	D16	L3	W32	3
19 Jewell, Ted	1887	W51	W24	L10	L15	W44	3
20 Tonelli, John	1532	W49	L11	L13	W40	W27	3
21 Kuruc, Peter	1930	L5	D39	D28	W33	W37	3
22 Tannenbaum, Mike	1706	L24	W44	W41	W35	L8	3
23 Anderson, Miles	2064	D17	W46	D6	L13	D25	2½
24 Lang, Charles	1665	W22	L19	L12	W7	D40	2½
25 Persante, Robert	1815	W52	L1	W45	L12	D23	2½
26 Waite, Bill	1912	D42	L14	W46	W43	L9	2½
27 Collins, Jr., Leroy	W54	W7	L14	L6	L20		2
28 Spedale, Michael	1732	W53	L10	D21	L9	D34	2
29 Estanger, Jr., Otto	1677	W33	L4	L15	W45	L11	2
30 Lucette, Michael	2053	D35	W34	D9	L8		2
31 Trapp, Richard	1666	Bye	L18	W37	L16	D36	2
32 Edwards, Larry	1749	D46	L2	W34	D41	L18	2
33 Mastroratti, Ron	1476	L29	W40	L7	L21	W41	2
34 Damsy, Michael	1555	D50	L30	L32	W39	D28	2
35 Koopmans, Bruce	1919	D30	D45	W48	L22		2
36 Clines Jr., Hugh	1545	Bye	L18	W37	L17	D31	2
37 Whately, Robert	1296	-	W49	L31	W47	L21	2
38 MacDonald, Ross	1750	-	-	W44	-	W52	2
39 Walkinshaw, Kevin	1634	L7	D21	L17	L34	W45	1½
40 Tomino, Paul	1772	L6	L33	W53	L20	D24	1½
41 Bartholomew, James	L8	W47	L22	D32	L33		1½
42 Lawhon, Thomas	2037	D26	W36	L5	-	-	1½
43 Markerson, John	1509	Bye	L16	W49	L26	-	1½
44 Smedley, Allen	1474	L14	L22	L38	W52	L19	1
45 Abarbo, Frank	1476	Bye	D35	L25	L29	L39	1
46 Kaplanstein, R.E.	1616	D32	L23	L26	D49	-	1
47 Yates, George	1669	L3	L41	L52	L37	-	1
48 Foust, Mike S.	1602	W7	L8	L25	-	-	1
49 Teodorsson, Egon	1716	L20	L37	L43	D46	-	½
50 Parks, Bob	1722	D34	L3	L36	LF	-	½
51 Ladford, James	2018	L19	Bye	-	-	-	½
52 Delage, Tom	1650	L25	L15	L47	L44	L38	0
53 Albin, Kenneth	1559	L28	L13	L40	-	-	0
54 Cox, John	1650	L27	L12	-	-	-	0

Player	Rtng	Rd1	Rd2	Rd3	Rd4	Rd5	TOT
RESERVE SECTION							
1 Williams, Mark	1463	W53	W47	W28	W18	W4	5
2 Parsons, Marvin	1451	W48	W10	W11	W17	D3	4½
3 Skjersaa, Karl H.	1475	W58	W35	W9	W12	D2	4½
4 Dunkelberg, Pete	-	W22	W6	W15	W7	L1	4
5 Garland, Greg	1501	W41	L9	W24	W42	W6	4
6 Ambrosio, Alex	1537	W40	L4	W34	W43	W5	4
7 Sherman, Howard	1464	W37	W19	W31	L4	W18	4
8 Holmes, Allen	1504	W36	L31	W37	W19	W17	4
9 Luis, Paul	Unr	W34	W5	L33	W32	D12	3½
10 Davis, Dennis	1579	W62	L2	D33	W23	W20	3½
11 Palm, Robert	1565	D13	W39	L2	W47	W28	3½
12 Donnelly, Russell	1366	W55	W29	W32	L3	D9	3½
13 Dreyer, Gregory	1293	D11	L15	W7	W33	W29	3½
14 Sellards, Harry III	1516	W21	L28	W36	W31	D16	3½
15 Bowers, Robert	1462	Bye	W13	L4	W49	W38	3½
16 Townsend, Lyle C	1404	L31	W53	W52	W38	D14	3½
17 Ivey, John	1558	W30	W23	W43	L2	L8	3
18 Krue, John	1449	W60	W24	W42	L1	L7	3
19 McDonald, Lloyd	Unr	W33	L7	W25	L8	W42	3
20 Mahas, Clifford	1509	L35	W58	W41	W22	L10	3
21 Deas, Charles	1310	L14	D48	W27	D39	W44	3
22 Pokrant, Marvin	Unr	L4	W60	W56	L20	W39	3
23 Us, Matsusha	1418	W51	L17	W7	L10	W36	3
24 Gonzalez, Danny	Unr	W49	L18	L5	W50	W51	3
25 Erb, Wilbur	1357	W52	L32	L19	W58	W40	3
26 Hartigan, Timothy	1210	L29	L37	W51	W45	W34	3
27 Vanatia, Robert	Unr	LF	W44	L21	W35	WF	3
28 Smith, Evan	1353	W45	W14	L1	D29	L11	2½
29 Leach, Alex	1532	W26	L12	W35	D28	L13	2½
30 Boerner, Gerhard	1258	L17	W51	L38	D37	W47	2½
31 Cashell, George	Unr	W16	W8	L7	L14	LF	2
32 Clifford, Greg	1535	W44	W25	L12	L9	-	2
33 Marlowe, David	1324	L19	W60	D10	L13	D37	2
34 Weathers, Gary	1313	L9	W54	L6	W41	L26	2
35 Hughes, Carl	1120	W20	L3	L29	L27	W55	2
36 Nims, Bruce	1116	L8	W55	L14	W46	L23	2
37 Moore, Paul	926	L7	W46	L8	D30	D33	2
38 McIntyre, John	1533	W50	L43	W30	L16	L15	2
39 Dibbinto, Steve	Unr	Bye	L11	W48	D21	L22	2
40 Ball, Harry	1245	L6	L22	W61	W54	L25	2
41 Kennedy, Robert	1100	L5	W45	L20	L34	W52	2
42 LaPiana, Peter	Unr	W54	W56	L18	L5	L19	2
43 Tuck, Bill	1399	W57	W38	L17	L6	-	2
44 Robinson, Richard	1141	L32	L27	W55	W52	L21	2

Player	Rtng	Rd1	Rd2	Rd3	Rd4	Rd5	TOT
45 Kulp, Jack L.	Unr	L28	L41	W53	L26	W61	2
46 Thornberry, Owen	1374	L47	L37	W58	L36	W54	2
47 Green, John	Unr	W46	L1	D49	L11	L9	1½
48 Joyce, Robert	Unr	L2	D21	L39	L60	W49	1½
49 Vowell, David	1407	L24	W61	D47	L15	L48	1½
50 Edwards, Frank J.	1220	L38	L52	W60	L24	D58	1½
51 Marsh, Glen	Unr	L23	L30	L26	W61	L24	1
52 Goodman, Charles	Unr	L25	W50	L16	L44	L41	1
53 Maiolo, Randy	1090	L1	L16	L45	L55	W60	1
54 Smith, Scott	811	L42	L34	Bye	L40	L46	1
55 McKeon, Kevin	Unr	L12	L36	L44	W53	L35	1
56 Grill, Steven	1455	W61	L42	L22	-	-	1
57 Supomo, Hadi	Unr	L43	W26	LF	-	-	1
58 Winner, Andrew	982	L3	L20	L46	L25	D50	½
59 Davis, Robert	1301	Bye	-	-	-	-	½
60 Kramer, James	Unr	L18	L33	L50	L48	L53	0
61 McCourt, James	908	L56	L49	L40	L51	L45	0
62 Whately, Robert	1296	L10	-	-	-	-	0
63 Pineda, Luis M.	1138	LF	-	-	-	-	0

ORANGE BLOSSOM OPEN

Player	Rtng	Rd1	Rd2	Rd3	Rd4	Rd5	TOT
Winter Haven, Fl. Feb. 1980							
1 Thomas W. Benham	1979	W16	W19	W18	D7	W10	4½
2 Bruce Koopmans	1919	Bye	W42	W20	W12	W8	4½
3 Jay King	1944	W41	W17	W9	D8	D5	4
4 James Ledford	2018	W37	D24	D5	W16	W14	4
5 Otto Estenger, Jr.	1688	W33	W46	D4	W24	D3	4
6 Robert Persante	1815	W47	W32	L8	W17	W15	4
7 Harold Alford	2050	W55	W49	D10	D1	W18	4
8 Hossein Zafarani	Unr	W35	W14	W6	D3	L2	3½
9 Paul B. Tomino	1772	W15	W25	L3	D11	W28	3½
10 Michael Goodman	1729	W26	W34	D7	W28	L1	3½
11 Gerald John Smith	New	L14	W22	W48	D9	W27	3½
12 Donald L. Craig	1560	Bye	W43	W31	L2	W25	3½
13 John Carter Mobley	1664	Bye	L31	W43	W42	W24	3½
14 Kevin Walkinshaw	1634	W11	L8	W32	W29	L4	3
15 Armando Jimenez MD	Unr	L39	W39	W46	L4	L6	3
16 Moni Viantrou	1380	L1	W39	W46	L4	W29	3
17 Bob Cairnright	1426	W50	L3	W30	L6	W34	3
18 Leslie H. Buck	1733	W39	W40	L1	W34	L7	3
19 John Krue	1449	W29	L1	W40	L15	W30	3
20 J. Paul Ramas	1462	Bye	W51	L2	W26	D21	3
21 Clifford S. Mahas	1509	D30	L38	W36	W31	D20	3
22 John Riola	Unr	L24	L11	W39	W47	W37	3
23 Edwin Faust	1574	L25	L29	W33	W38	W32	3
24 Karl Skjersaa	1475	W22	D4	W38	L5	L13	2½
25 Dr. Michael Carey	Unr	W23	L9	D27	W37	L12	2½
26 Carl Hughes	1120	L10	D37	W52	L20	W38	2½
27 Frank Arba	1476	Bye	D30	D25	W45	L11	2½
28 Ronald Mastronardi	1476	Bye	WF	W45	L10	L9	2½
29 Arturo Paras	Unr	L19	W23	W47	L14	L16	2
30 Elmer Leverett	Unr	D21	D27	L17	W41	L19	2
31 Gene Cauley	1321	Bye	L13	L12	L21	D36	2
32 Harry C. Ball	1245	W48	L6	L14	W46	L23	2
33 Brian Woos	1100	L5	L15	L23	WF	W46	2
34 Daniel A. Gonzales	Unr	WF	L10	W49	L18	L17	2
35 Paul Mitchell	1416	L8	W52	L15	W40	-	2
36 G.D. Hackett	Unr	L49	D50	L21	WF	D31	2
37 Donald E. Bowen	1413	L4	D26	W50	L25	L22	1½
38 John Linder	Unr	Bye	W21	L24	L23	L26	1½
39 Robert A. Kennedy	1100	L18	L16	L22	D44	W50	1½
40 John A. Green	Unr	W53	L18	L19	L35	D41	1½
41 Peter Barry	Unr	L3	L48	W44	L30	D40	1½
42 Adolph Goodman	1369	Bye	L2	W51	L13	-	1½
43 Randy Maiolo	1090	Bye	L12	L13	W50	-	1½
44 Kevin McKeown	950	L46	L47	L41	D39	W54	1½
45 Harry Klug	1225	Bye	WF	L18	L27	-	1½
46 Dick Lichtenwalter	Unr	W44	L5	L16	L32	L33	1
47 Robert A. Mayer	1278	L6	W44	L29	L22	-	1
48 Donald A. Hallman	1777	L32	W41	L1	-	-	1
49 William T. Perkins	1545	W36	L7	L34	-	-	1
50 Kelly Wells	Unr	L17	D36	L37	L43	L39	½
51 John McRoberts	Unr	Bye	L20	L42	-	-	½
52 Dwayne Wildhagen	Unr	Bye	L35	L26	-	-	½
53 Frank Redway III	759	L40	-	-	-	-	0
54 Francis Redway Jr.	1707	L7	-	-	-	-	0

Kentucky

Player</

Player	Rtng	Rd1	Rd2	Rd3	Rd4	Rd5	TOT
6 Ali Shabin	1393	W7	L2	L3			1
7 Leroy Greenlee	1165	L6	W8	L5			1
8 Brad Taylor	1145	L2	L7	WD			0

SECTION V

1 Roger Steward	Unr	W4	D5	W2			2½
2 Greg Sullivan	Unr	W8	W3	L1			2
3 David Haim	Unr	W6	L2	Bye			2
4 David Gibbon	Unr	L1	W7	W6			2
5 William Pearlman	812	W7	D1	WD			1½
6 Sean Campbell	Unr	L3	W8	L4			1
7 Roger Singh	Unr	L5	L4	Bye			1
8 Michael Hill	Unr	L2	L6	L6*			in Sect 2 0

SECTION VI

Danny McKeithen	1545	L2	W2	W2			2
Mark Bailey	1615	W1	L1	L1			1

Special match to determine UWC-CH 4th board

SECTION VII

1 James Watson	2059	W2	W4	D2			2½
2 Allen Cooley	1811	W8	W7	D1			2½
3 Ulf Hellesten	1649	L1	W8	W6			2
4 Richard Swift	1785	D5	L1	W8			1½
5 Ronald Gray	1553	D4	D6	D7			1½
6 Bernie Schmidt	2005	D7	D5	L3			1
7 Kevin Chester	1605	D6	L2	D5			1
8 John Wooten	1582	L2	L3	L4			0

SECTION VIII

1 John Plummer	1439	W6	D5	W4			2½
2 George Harwell	1541	L5	W6	Bye			2
3 Glen Shelton	1411	W7	L4	W5			2
4 Tony Magee	1220	W8	L3	L1			2
5 Kader Shersoy	1400	W2	D1	L3			1½
6 Clyde Davis	1398	L1	L2	Bye			1
7 Ali Shabin	1393	L3	W8	WD			1
8 Robert Hinkson	1444	L4	L7	WD			0

SECTION IX

1 Branson Sheets	1206	W7	W5	D2			2½
2 Brian Gurley	1203	W4	W3	D1			2½
3 Will Foster	1366	W6	L2	W7			2
4 Kenneth Johnson	1079	L2	W6	W8			2
5 Allen Fusco	1114	W8	L2	L6			1
6 Robert Singletary	1105	L3	L4	W5			1
7 Pate Kelly	1085	L1	W8	L3			1
8 Kathleen Harwell	938	L5	L7	L4			0

SECTION X

1 Dave Diehl	Unr	W3	W2	W4			3
2 William Pearlman	812	W4	L1	L3			1
3 Lawrence Marshburne	Unr	L1	L4	W2			1
4 Jerry Alvis	Unr	L2	W3	L1			1

TIGER V

Fuquay-Varina, NC	January 12, 1980						
1 Dan Liu	2081	W2	D3	Bye			2½
2 Glenn Evans	1768	L1	Bye	W3			2
3 Bob Dunn	1865	W4	D1	L2			1½
4 David O'Brant	1773	L3	WD				0

SECTION II

1 Ricky Lee Bailey	1628	W5	W7	W3			3
2 Danny McKeithen	1545	L3	W8	W4			2
3 Clive Morgan	1702	W2	W4	L1			2
4 Kevin Chester	1605	W8	D3	L2			1½
5 James Hughey	1451	L1	W6	D8			1½
6 Ron Gray	1579	L7	L5	Bye			1
7 Mitch Gillespie	1443	W6	L1	WD			1
8 Will Foster	1448	L4	L2	D5			½

SECTION III

1 David Howell	1218	D8	W4	W3			2½
2 Paul Brooks	1420	W6	L3	W5			2
3 Tony Magee	1260	W7	L2	L1			2
4 Larry Mathews	1214	W5	L1	W6			2
5 Ali Shabin	1393	L4	W8	L2			1
6 Michael Trawick	1218	L2	W7	L4			1
7 Marvin Weaver	1058	L3	L6	W8			1
8 John Rayeand	1022	D1	L5	L7			½

2ND BATTLE OF GUILFORD, NC

February 2-3, 1980							
1 Jim Hardy	1813	W12	W19	W5	W2	D3	4½
2 Terry Newman	1980	W14	W4	W17	L1	W7	4
3 Bruce Wright	1876	W10	D18	W9	W7	D1	4
4 Clive Morg n	W11	L2	W20	W17	W6		4
5 Bob Dunn	1865	W15	W24	L1	D12	W16	3½
6 Noel Harris	1826	L19	W25	W22	W21	L4	3
7 John Thompson	1773	W25	W21	W18	L3	L2	3
8 Guenter Schmidt	1648	W26	L17	D10	W11	D12	3
9 Arnold Tharrington	1603	D16	W27	L3	D18	W20	3
10 David Antczak	1416	L3	W23	D8	D13	W17	3
11 Carl Horton	1251	L4	W14	W13	L8	W18	3
12 John Lee	Unr	L1	W15	W24	D5	D8	3
13 Patsy Newman	1572	L27	W16	L11	D10	W21	2½
14 Clyde Davis	1442	L2	L11	W25	D22	W23	2½
15 Roger Steward	Unr	L5	L12	W26	D23	W22	2½
16 Eric Singer	Unr	D9	L13	W27	W19	L5	2½
17 Sam Parkins	1814	W22	W8	L2	L4	L10	2
18 Bruce Schexmayder	1696	W23	D3	L7	D9	L11	2
19 Ali Shabin	1393	W6	L1	L21	L16	W26	2
20 Herb Horton	952	L24	Bye	L4	W27	L9	2
21 Mike Lamb	Unr	Bye	L7	W19	L6	L13	2
22 John Hall	1389	L17	W26	L6	D14	L15	1½
23 Leroy Greenlee	1165	L18	L10	Bye	D15	L14	1½
24 Gary Lundy	1679	W20	L5	L12	WD		1
25 Isaac Maynard	1284	L7	L6	L14	L26	W27	1
26 David Gibbon	Unr	L8	L22	L15	W25	L19	1
27 Michael Hill	Unr	L13	L9	L16	L20	L25	1

SANDHILLS V

Rockingham, NC	January 26, 1980						
----------------	------------------	--	--	--	--	--	--

Player	Rtng	Rd1	Rd2	Rd3	Rd4	Rd5	TOT
1 Thomas L. Allen	1531	W6	D4	W5			2½
2 William W. Foster	1400	W5	L3	W4			2
3 Alan Goodman	1338	L4	W2	Bye			2
4 Ronald Gray	1579	W3	D1	L2			1½
5 Jerry C. Sheppard	1307	L2	W6	L1			1
6 Larry O. Williams	1325	L1	L5	WD			0

SECTION II

1 Donnie Mabe	Unr	W2	W5	D4			2½
2 Jack Martin	675	L1	W3	Bye			2
3 Cynthia Half	Unr	Bye	L2	W5			2
4 Sandra Hale	Unr	L5	Bye	D1			1½
5 James Martin	851	W4	L1	L3			1

Pennsylvania

C3 CHRIS'S HOMECOMING

Warminster, Pa.	February 2, 1980						
1 Yauze, Chris	1571	W3	W2	W5			3
2 Ost, David	1212	W5	L1	W6			2
3 Ost, Edward	1156	L1	W6	W4			2
4 Riddle, Ira Lee	1174	W6	L5	L3			1
5 Jennings, Sean	Unr	L2	W4	L1			1
6 Jennings, Larry	Unr	L4	L3	L2			0

PSCF-GERMANTOWN YMCA #1

1 Coleman, Darryl	1586	W9	W6	W5			3
2 Washington, John	1462	W3	D5	W6			2½
3 Witte, Robert	1657	L2	W7	W8			2
4 Minus, Donald	1496	L6	W9	W7			2
5 De Brady, Chris	1587	W8	D2	L1			1½
6 Ladson, Preston	1661	W4	L1	L2			1
7 Neal, Michael	1307	W10	L3	L4			1
8 Bogus, Howard	1415	L5	W10	L3			1
9 Washington, Mike	1330	L1	L4	W10			1
10 Forman, Gary	1560	L7	L8	L9			0

PSCF HOWARDS SPECIAL TOURNAMENT

1 Bogus, Howard	1415	W7	W4	L3			2
2 Feinstein, Mike	1323	W6	L3	D5			1½
3 Gaines, Wm.	1251	W8	W2	W1			3
4 Ost, David	1212	W9	L1	W8			2
5 Ost, Ed	1156	W10	W7	D2			2½
6 Garland, Craig	1088	L2	L10	L9			0
7 Cress, Joe	New	L1	L5	W10			1
8 Swartz, Jeff	New	L					1
9 Korbel, Frank	New	L4	L8	W6			1
10 Dawson, John	New	L5	W6	L7			1

Pa. STATE TEAM TOURNAMENT

Cheyney, Pa.	January 12-13, 1980						
1 Delaware Blue Devils	1-5	W19	W8	D5	W2	W7	4½
2 Our Best, We Think	6-9	W10	W4	W9	L1	W6	4
3 Northenders	19-22	W16	D6	W12	D5	W8	4
4 Bucknell Univ.	28-32	W14	L2	W10	D12	W5	4
5 West Chester #1	10-13	W15	W13	D1	D3	L4	3
6 Ryant Savad	42-45	W22	D3	D7	W14	L2	3
7 Lighthouse	14-18	D12	W11	D6	W13	L1	3
8 Vaux JHS	33-36	W17	L1	W15	W9	L3	3
9 Cheyney State	93-96	W20	W18	L2	L8	W15	3
10 Blue Knights	50-53	L2	W20	L4	W16	W13	3
11 St. Josephs	66-70	D18	L7	D19	W21	W17	3
12 Mean Machine	58-61	D7	W19	L3	L4	W14	2½
13 Knights of Need	37-41	W21	L5	W16	L7	L10	2
14 Mighty Fawns	71-74	L4	W22	W18	L6	L12	2
15 McPherson Lib #3	54-57	L5	W17	L8	W20	L9	2
16 West Chester #2	62-65	L3	W21	L13	L10	W18	2
17 Upper Darby H.S.	75-79	L8	L15	W22	W19	L11	2
18 Innovators	23-27	D11	L9	L14	W22	L16	1½
19 Bloomsburg State	46-49	L1	L12	D11	L17	W21	1½
20 No Names	89-92	L9	L10	D21	L15	D22	1
21 Interboro JHS #1	80-84	L13	L16	D20	L11	L19	½
22 Interboro JHS #2	85-88	L6	L14	L17	L18	D20	½

The rating column is player number.

INDIVIDUAL

1 Rorhrich, Wayne	2020	W46	-	D10	W6	W14	3½
2 Haeg, Russell	1979	-	D33	D11	W7	W15	3
3 Brandreth, Dale	1865	W47	D34	-	W8	L16	2½
4 Bender, Hugh	1827	L48	W35	W12	W9	-	3
5 Thomas, Leonard	1781	W49	W36	L13	-	W17	3
6 Daniels, Howard	1898	W50	W28	W93	L1	W42	3
7 Kinsler, George	1798	W51	D29	W94	L2	W43	3½
8 Shutt, Steve	1781	W52	W30	W95	L3	W44	4
9 Jiles, Kevin	1648	W53	D31	W96	L4	W45	3½
10 Austin, John	1924	W54	D38	D1	L19	L28	2
11 Dunkerly, Dennis	1757	D55	W39	D2	W20	D29	3½
12 Glumac, Dusan	1544	W56	L40	L4	W21	L30	2
13 Ekerenkoetter, Roy	1526	W57	W41	W5	L22	L31	3
14 Patterson, Robert	1856	-	W66	W42	D37	L1	2½
15 Sciarretta, Dominic	1708	W58	L67	-	-	L2	1
16 Daskus, Richard	1696	L59	-	L43	D39	W3	1½
17 Curtiss, James	1565	L60	W68	L44	W40	-	2
18 Jackson, Francis	1534	W61	W70	W45	W41	L5	4
19 Martinek, Bedrich	1882	W62	W42	W58	W10	D33	4½
20 Jeml, Michael	1674	W63	L43	W59	L11	L34	2
21 Depew, Raymond	1638	W64	L44	L60	L12	W35	2
22 Falkendo, Russell	1636	W65	W45	W61	W13	W36	5
23 Payne, Thomas	1632	-	L93	L71	W86	L2	1
24 Hines, Ashley	Unr	L67	L94	L72	W87	W63	2
25 Thomas, Willie	Unr	W69	L95	-	-	-	2



U.S. OPEN

August 3-15

**At the all new Dunfey Hotel
in**

ATLANTA



A twelve-round Swiss featuring some of the country's top players

Special displays

Workshops

Mini tournaments

Special Activities

The 1980 Delegates' and Membership meetings



**For further details contact: L. Thad Rogers, 3055 General Lee Road,
Macon, Georgia 31204, or the USCF National Office, 186
Rt. 9W, New Windsor, New York, 12550**