

SOUTHEAST CHESS



SEPT. 1980

TABLE OF CONTENTS

Editorials	Jared Radin, Lee Hyder	3
Scholastic Chess	Steve Schneider	3
The Atlanta Kings 1980	Mike Decker	4
Florida Games	Tom Steirs	6
South Carolina Games	C. E. Braun	7
Atlanta Kings Game	Steve Hunt	8
Atlanta Teens	Tom Kayna	9
Crosstables		10
Chess Clubs Around the Area		13
Tournament Announcements		14

FLORIDA CHESS ASSOCIATION

President: Gilbert Cantrell
4040 67th Ave. N
Pinellas Park, Fl. 33565
Vice President: Larry Storch
1622 E. Harding Ave.
Orlando, Fl. 32806
Phone: (305) 896-3848
Sec.-Treas.: Flora Cantrell
(address same as president)
Phone: (813) 527-6010
Directors: Dr. Juan Gonzales
Mark Solomon
Steve Goins
John Claxton
Tom Mercer
Alan Tenan

GEORGIA CHESS ASSOCIATION

President: L. Thad Rogers
3055 General Lee Rd.
Macon, Ga. 31204
Phone: (912) 742-5687
Vice President: Jared Radin
1458 Sheffield Dr. N.E.
Atlanta, Ga. 30329
Phone: (404) 634-6598
Secretary: Bill Noyes
777 Briarcliff Rd.
Atlanta, Ga. 30306
Treasurer: Steve Whitenan
944 St. Charles Ave. NE
Atlanta, Ga. 30306

SOUTH CAROLINA CHESS ASSN.

President: William Dodgen
2008 Robin Rd.
N. Augusta, S.C. 29841
Vice President: Marion Mahaffey
1207 Memorial Park Rd.
Lancaster, S.C. 29728
Secretary: Charles Braun
7 Winthrop Dr.
Aiken, S.C. 29801
Treasurer: Harold Kelly
811 Rhododendron Pl. SE
Aiken, S.C. 29801

SOUTHERN CHESS

Southern chess is published bimonthly by the Georgia Chess Association in cooperation with the Florida and South Carolina Chess Associations. Subscription is by membership in the Georgia, Florida, or South Carolina Chess Associations. Send all address changes to the state association in which you are a member.

Send all contributions to your state association chess editor. The deadline for general chess articles is three months before the issue in which it is to appear. The deadline for tournament announcements, chess club announcements, cross tables, chess news, last minute announcements, etc. is one month before the issue in which it is to appear in. For the next few issues we can not set any definite dates, so send the news as fast as possible. The next issue is planned to come out in less than two months, to make up for the delay in coverage of chess news.

EDITOR: Jared Radin
1458 Sheffield Dr. NE
Atlanta, Ga. 30329

Send only Georgia Chess News, tournament announcements, chess club announcements, and last minute news to the editor. Send all other news to your state editor or secretary.

IMPORTANT !!!

NEEDED IMMEDIATELY: Chess Club listings, Chess club news items, tournament announcements, and short articles of local interest. Articles of local interest should be kept to one paragraph and preferably be chess club news. Send articles of above type directly to the editor. All chess club listings must include an address and preferably a list of officers or organizers.

EDITORIAL

by Jared Radin

This is the first issue of SOUTHEAST CHESS. The CHESSMAN is gone. The editor of the CHESSMAN resigned around the date the magazine was due to come out. Two months of work was required to bring out the first issue of SOUTHEAST CHESS, resulting in a four month period of no local chess newsletter. SOUTHEAST CHESS will strive for the excellence the CHESSMAN achieved, however with some policy changes. The new magazine will cover at the most only the southeast states, that is Florida, Georgia, South Carolina, and North Carolina if they choose to join use. One of the purposes of the magazine is to cover the local news, which includes the news of local chess clubs, the news of chess in the smaller cities and towns, and unrated chess events, that is ALL the chess news.

The first issue of a magazine is usually the hardest to put together, only during the last few weeks have I received many contributions, in fact I have received so many contributions that I am saving several of them for a head start with the next issue. I am dismayed that I have not received more contributions from Florida and South Carolina, this issue includes a predominance of Georgia material, a practice which I do not plan to continue (Florida and South Carolina contributors, are you listening?).

SCHOLASTIC CHESS

The Berkmar team will be seeking the third straight Georgia High School Team Championship during the 1980-81 school year.

There will be many chess tournaments this year for high school and elementary school players but the event with the greatest interest will be the Georgia Scholastic Chess League open to any school (grades 1-12) in Georgia. The league consists of 5 man teams and are played in geographic regions of the state with regional winners coming together for a State Championship in late March or early April. The entry fee is \$15.00 for a team. The league will start in October with practice matches and in January with the regular season schedule. Last year over 40 high school schools participated. There were also many elementary and junior high school teams entered for the fun. If your team is ready call Steve Schneider, director 351-7222

EDITORIAL by Lee Hyder

"CHESSMAN" is gone. Just when it appeared that the magazine was assured of commercial success through access to the major Eastern states, publisher Morrison found it impossible to continue. Our relations with Morrison were not always of the best, but he put out a good magazine that was a good value for SCCA members; we will miss it.

We are grateful that Thad Rogers and the Georgia Chess Association have undertaken to publish a joint magazine. We have agreed that the other states in our region, North Carolina and Florida, may also participate if they choose, but that will be the limit. We will cover chess and chessplayers in our area primarily, along with such items of general interest as may come to the Editors' attention. Our aim is to give the best possible service to South Carolina chessplyers, and to increase the number who participate in the SCCA.

For our next issue I am seeking news from all parts of the state. I know that tournaments have been held recently in Greenville, Columbia, and Lancaster, and I hope to print details here. Spartanburg also has an active club with 30 members, and we hope to get news from there also. Let us here from you! Write me at 33 Longwood Drive, Aiken, S.C. 29801.

There is one other item of business to note. Bids for the annual South Carolina Championships, held in October or November of each year, are about to close for 1980. Bids would be welcomed from any part of the state, but a central location is preferable. Call Bill Dodgen at 279-6881 if your club is interested.

SAVANNAH COASTAL EMPIRE OPEN

The twelfth Savannah Coastal Empire Open was held at Savannah State College on May 24-25. There were 45 participants. In the Open section, the top prize was won by Raymond Quillian from Columbus, Georgia; the A-Section trophy by Matthew Clark; and the B-Section trophy by Bill Strong. In the Booster Section, Walter Jones of Statesboro and Glen Engels of Savannah tied first place; Michael Konter won the D-Section trophy and Jerome Kaye from Hazlehurst got the unrated section trophy. Under-twelve section trophies were given to Trevor Burnsed, Kacy Burnsed, Randy Deason, and Jay Mithcell. Mr John Lauff assisted by Mike Wedd coordinated the tournament. Mr. Charles Ray of Ray Coffee Service donated refreshments for the length of the tournament.

The Atlanta Kings 1980

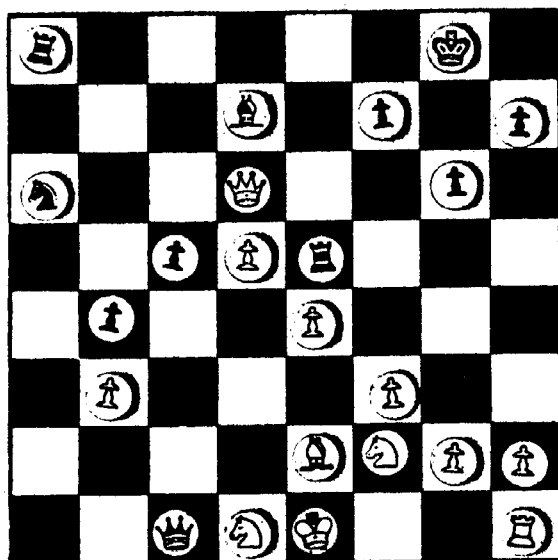
by Mike Decker

The Atlanta Kings could not duplicate their surprisingly strong 3-3 record of last season. Despite the addition of senior master Boris Kogan and master Phil Geffe late in the season, the team managed only a 1-6 score--drawing both Philadelphia and Indianapolis.

The 1980 season almost got off to a spectacular upset when Atlanta met the current and two-time league champions, the Berkeley Riots. Despite being outrated by almost 400 points per board, two of Atlanta's A-players toppled 2300's while Mike Lucas just missed a win against a 2400 in extreme time pressure.

Board 6 White Joe Scott (Atlanta) Black: Krsig Marr 2304 (Berkeley)

1.d4, Nf6 2.c4, c5 3.d5, e6 4.Nc3, ed 5.cd, d6 6.e4, g6 7.Bg5, Bg7 8.Qd2, 0-0 9.Be2, Qa5 10.Rc1, Re8 11.f3, a6 12.a4, Bd7 13.b3, b5 14.ab, ab 15.Nh3, b4 16.Nd1, Na6 17.Qf4! (Black must have missed this very strong shot which disrupts the K-side and center) 17...Qa3 18.Nhf2, Re5 19.Bf6, Bf6 20.Qf6, Qc1 21.Qd6 (diagram)



Scott-Marr after 21.Qd6

(Marr hopes to be able to do something with a Queenside pawn roller before White's material advantage begins to tell.) 21...Qc2 22.Bc4, Ba4 23.Qe5, Bb3 24.Bb3, Qb3 25.Ng4!, h5 26.Nh6+, Kh7 27.Nf7, Qd3 28.Qf6, Rg8 29.Ng5+, Kh6 30.Qf7, b3 31.Qg8, Kg5 32.h4+, Kf6 33.Qf8+, Ke5 34.f4+, Kd4 35.Qf6+, 1-0 as Black's Queen is lost to a knight fork whichever way his King now moves.

On Board 5, it was a classic case of youth versus experience. Young Paul Whitehead (2390 and moving up) gave up a pawn for Kingside pressure against Atlanta's Dan Molina; had his attack stopped cold by some tricky pins, and went

for broke with a wild piece sacrifice which led nowhere.

White: Paul Whitehead (2390) Black: Dan Molina (1905)

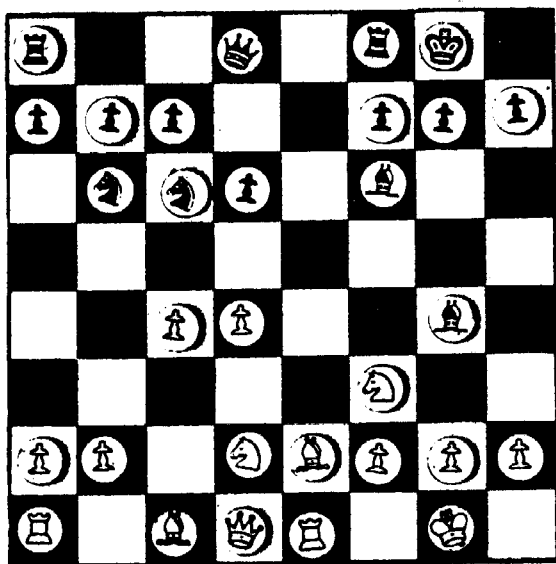
1.e4, e5 2.Nf3, Nc6 3.Bb5, a6 4.Ba4, Nf6 5.0-0, Be7 6.Re1, b5 7.Bb3, 0-0 8.d4, d6 9.c3, Bg4 10.h3, Bf3 11.gf, Qd7 12.Kh2, Na5 13.Bc2, Rfe8 14.f4, ed 15.e5, de 16.fe, Nd5 17.cd, Rad8 18.Rg1, g6 19.a4, b4 20.Bh6, c5 21.Nd2, cd 22.Nf3, Nc6 23.Rg3, Bf8 24.Bf8, Kf8 25.Qd2, Kg7 26.Rag1, Qc7 27.h4, Ne5 28.Nd4, Ne7 29.f4, Ne5c6 30.f5, Rd4! 31.f6+, Kf6 32.Qh6, Qf4 0-1. Dan Molina, who seldom plays in tournaments anymore, had very good results playing for the Kings this year--achieving a master's performance rating. He also submitted a game he played back in 1938 in his native Cuba--Molina plays Black: 1.P-KB4, N-KB3 2.N-KB3, P-Q3 3.N-B3, P-QB4 4.P-K4, P-K3 5.P-K5!, N-Q4 6.N-K4, B-K2 7.P-Q4, BPxP 8.PxP, BxP 9.QxP, P-B3 10.NxB+, QxN 11.P-B4, Q-N5+ 12.B-Q2, N-B3! 13.Q-K4, QxNP 14.R-QN1, QxP 15.PxN, QxP

16.QxQ, PxQ 17.R-N5, N-K2 18.B-N4!, P-QR3 19.R-N6, K-B2 20.BxN, R-K1 21.K-Q2, RxB 22.B-Q3, P-N3 23.R-K1, R-B2 24.R-Q6, R-Q2 25.R-N6, R-B2 26.B-N1, B-Q2 27.B-R2, B-B3 28.N-Q4, P-QR4 29.NxB, PxN 30.RxP, R-Q2 31.R/1-K6, P-B4 32.R/K-Q6, RxR 33.RxR, K-K2 34.RxQP, R-Q1 35.RxR, KxR 36.B-N8, P-R3 37.B-R7, P-N4 38.PxP, PxP 39.BxP, K-K2 40.K-B3, K-Q3 41.B-B2, K-K4 42.P-N3, K-Q4 43.K-N3 1-0 (White has a win but one which involves some technical accuracy because the ending of KRP + B is a draw. Black assumed such accuracy because his opponent was, after all, Jose R. Capablanca.)

The final round against Charleston, West Virginia saw an opening fiasco on Board 1 as Phil Geffe (2212--Atlanta's newest master) achieved a won position in just 11 moves as Black against his 2100 opponent.

White: Dennis Funkhauser (2107) Black: Phil Geffe (2212)

1.e4, Nf6 2.e5, Nd5 3.d4, d6 4.Nf3, Bg4 5.Be2, Nb6 6.ed (A very quiet continuation. Most interesting was the speculative 6.Ng5, Be2 7.Qe2, h6 8.Ne4!?, Nc6! 9.P-K6!? which worked for White in Zeitlin-Karasev, USSR 1969) 6...ed 7.O-O, Be7 8.Re1, O-O 9.Nbd2? (better 9.c4), Nc6 10.c4, Bf6 (Diagram) (White's position is already embarrassing. Relatively best is 11.d5 after which Black holds an edge after either 11...Bf3 or Ne7. White's response loses at least a pawn.)



11.b3?, Nd4 12.Nd4, Bd4 13.Rb1, Bf5 14.Bb2, Bb1 15.Bd4, Bf5 16.g4, Bd7 17.Nf1, f5 18.Ng3, Qg5 19.gf, Bf5 20.Be3, Qg6 21.Bh5, Qf6 22.Nf5, Qf5 23.Bg4, Qf6 24.Bd4, Qh4 25.Re4, Qg5 26.h4, Qg6 27.Re6, Qf7 28.Qe2, Rae8 29.Re4, Re4 30.Qe4, Re8 31.Qb7, Qf4 32.Bh5, g6 33.Bb6, ab 34.Bf3, Rf8 35.Qd5+, Kh8 36.Kg2, Qh4 37.b4, Rf5 38.Qa8+, Kg7 39.Qc6, Qg5+ 40.Kf1, Qf4 41.Kg2, d5! (a lovely interference move) 42.Qd7+, Kh6 0-1 (Any bishop move allows mate.)

Funkhauser-Geffe after 10...Bf6

On Board 4, Steve Whiteman converted his middle game pressure into an elegant K & P ending.

White: Steve Whiteman (1948) Black: Mark Hathaway (1944)

1.e4, c5 2.d4, cd 3.c3, d3 4.c4!, Nc6 5.Bd3, Nf6 6.Nc3, g6 7.Nge2, Bg7 8.O-O, O-O 9.h3, d6 10.Be3, Be6 11.b3, Nd7 12.Rc1, Nc5 13.Nd5, Nd3 14.Qd3, f5 15.f3, Ne5 16.Qd2, fe 17.fe, Qd7 18.Nd4, Bd5? (Time-pressure is the only possible excuse for this positional monstrosity--White's control of e6 looks sufficient for a win.) 19.ed, Rf1+20.Rf1, Nf7 21.Ne6, Bf6 22.Bd4, Ne5 23.g4, Qc8 24.g5, Bg7 25.Qf4, a6 26.Ng7, Kg7 27.Be5+, de 28.Qe5+, Kg8 29.Qe7, Qh3 30.Qe6+, Qe6 31.de, Re8 32.Re1, Kf8 33.Kf2, Ke7 34.Rh1, Ke6 (Diagram)

WHERE ARE THE SCCA MEMBERS?

Well scattered over the state. For example:

Columbia Area	21
Charleston Area	18
Aiken County	9
Greenville	5
Anderson-Clemson	7

With chess booming in the Greenville-Spartanburg area, we hope many more will join us from that portion of the state.

GAMES By C. E. Braun

Bill Floyd contributes the following with his own notes:

--Going back over my games is, for the most part, very painful (even my wins are usually a "thing of ugly"). This is an exception. It's from the "Cliffhanger #2" in Columbia in May. White: H. Abrahams. (1704) Black: B. Floyd (1188) Ruy Lopez. 1 P-K4 P-K4 2 N-KB3 N-QB3 3 B-N5 P-QR3 4 BxN NPxB?! Certainly not recommended, but I contend it's worthy of consideration. 5 O-O N-B3? My one flaw, but all's well that ends well. (Better 5--P-Q3. Ed.) 6 NxP B-B4 7 P-Q3? Why not P-Q4, winning a tempo? 7--O-O 8 N-QB3 R-K1 9 N-B3 P-Q4 10 PxP PxP And I'm rid of the nasty doubled pawns. (White is o. k. still, but 10 P-K5 followed by 11 P-Q4 was also playable and attractive. Ed.) 11 B-N5 P-Q5 12 N-K4 B-K2 13 NxN+ BxN 14 Q-Q2 (Better 14 BxB QxB 15 R-K1. Ed.) 14--B-N5 15 BxB QxB 16 Q-N5 BxN 17 QxQ PxQ 18 PxB R-K7 My opponent was bent on simplifying, and quite frankly, I was content to oblige. I didn't see sufficient strength in his one pawn advantage, considering my rook position and control of the K file. 19 QR-B1 R-N1 20 P-N3 R-N3 21 KR-K1 R-K4 If he wants to trade rooks, I get my pawns undoubled. 22 R-K4 R-Q3 23 K-B1 R-KR4 24 P-KR4 K-N2 Black could win the KRP by playing P-KB4 but the White R gets in among the weak black pawns on the queenside. 25 K-K2 R-K3 26 R-KR1 K-B1 27 K-Q2 P-QB4 28 R/1-K1 K-K2 29 P-B3 R-Q4 30 PxB PxP (RxB lets the K in.) 31 R-QB1 K-Q2 32 R-QB4 RxB 33 QPxR So important was it to free the K that he didn't take this opportunity to undouble the B pawns. (Bad judgment. White has very systematically driven Black back and after BPxR he would have an overwhelming game--all the Black pawns are weak and the only White weakness, the KRP, is of no account. MLH) R-KR4 34 RxB+ K-B2 35 R-B4+ K-N2 36 P-K5? (Better 36 R-Q4 K-B2 37 R-Q5! and if RxB PxR K-Q3 39 K-Q3 KxB 40 P-N4 with an easily won K and P endgame, or 37--RxB 38 R-KE5 with an overwhelming position. Ed.) PxP 37 K-Q3 P-B4 38 R-B5 P-B5+ 39 K-K4 RxB 40 RxB R-R7 41 KxB RxB 41 R-K7+ (Tantamount to conceding the draw. He had to try P-R4. MLH) K-B3 43 RxB RxB 44 R-K7 R-QN7 45 R-K3 P-R4 46 R-B5? (R-K5 saves a tempo, but the Black RP still reaches the seventh rank and draws.) K-B4 47 K-K5 K-N5 48 P-B4 RxB 49 R-K4+ K-N4! So that the P would queen with check. 50 P-B5 P-R5 51 P-B6 P-R6 Drawn. An interesting position. Black might even have a win, but I can't find it. (It's not there. After 52. R-K1 P-R7 53. R-QR1 R-N7 54 P-B7 R-K7+ 55 K-Q6 R-KE7 56 K-K7 R-K7+ the draw is well justified. MLH)

GAMES, CONTINUED

Al Cantrell sent us this game which he thinks is interesting. We agree. Mic Bush was White.

1 P-Q4 N-KB3 2 P-QB4 P-K3 3 N-QB3 P-QB4 4 P-Q5 PxP 5 PxP P-Q3
6 P-K4 P-KN3 7 P-KB4 QN-Q2 8 B-QN5 P-QR3 9 Q-R4 PxBI? This turns
a positional struggle into a tactician's dream. Black gets
plenty of play. 10 QxR P-N5 11 P-K5 PxP 12 PxP NxKP A little
less hairy would be 12--N-N3 and 13--KNxP. 13 B-KN5 B-N2
13--B-K2 is better, and a wild possibility is 13--PxN 14 BxN PxP.
14 N-K4 O-O 15 O-O-O? 1 Q-N3 16 NxN+ BxN 17 B-R6 R-K1 18 Q-R4 B-Q2
19 Q-B2 P-B5! Just when it looked like White might slip out.
20 N-KB3 B-KB4 20--P-N6! is even nicer. 21 Q-R4 R-QB1 22 NxN
P-B6 23 KR-K1? Q-B7 White resigns.

NORTH AUGUSTA - AUGUSTA CHESS ACTIVITY

The North Augusta-Augusta chess club held three small one-day tournaments this spring to promote the U. S. Open. (Actually they weren't intended to be small, but they worked out that way.) Three different players won the three events, each with a 4-0 score: Lee Hyder of Aiken in March, Chuck Braun of Aiken in April, and Doug Taffinder of Charleston in May.

A team chess league is being formed for the fall of this year. A number of four-man teams will be competing in a five-round event between September and the beginning of November.

ATLANTA KINGS VS. INDIANAPOLIS PAUN CRUNCHERS, JUNE 21, 1980

White: Steve Hunt 2014, Black: Loren Schmidt 2355 Sicilian Maroczy Bind (by transposition)

1. P-Q4 N-KB3, 2. P-QB4 P-QB4, 3. N-KB3 (To avoid the Benko Gambit after 3. P-Q5 P-QN4) P-KN3, 4. N-QB3 B-N2, 5. P-K4 O-O, 6. B-K2 PxP, 7. NxP N-B3, 8. B-K3 P-Q3, 9. O-O B-Q2, 10. P-KR3 P-QR3, 11. Q-Q2 R-N1, 12. P-QR4 (To prevent the freeing move 12...P-QN4) Q-R4, 13. P-B3 KR-B1, 14. P-KN4 NxN (After making is 14th, White feared 14...Q-R4, 15. P-KB4 NxP but later noticed that NxN would win a piece as QxN is answered by B-Q3 or B-B3 winning the queen.), 15. BxN B-K3, 16. P-N3 N-Q2, 17. BxB KxB, 18. Q-Q4+ Q-K4, 19. QxQ+ NxQ, 20. P-KB4 N-B3, 21. P-B5 B-Q2, 22. KR-Q1 N-N5?, 23. PxP! R PxP, 24. P-K5 R-KR1, 25. PxP RxP (25...PxP, 26. RxP B-B3 leaves Black a Pawn down, but with some counterplay. The method chosen by Black leaves in two pawns down with little counterplay.), 26. PxP RxN, 27. RxB R-K1 (Otherwise 28. R-Q8), 28. RxP N-B3, 29. P-B5 N-Q5 (Rather than face two connected passed pawns in the ending after 29...RxBP, 30. BxP RxKP, 31. RxR NxR, Black decides to go all-out on an attack of the White King. There are too few pieces for this to be successful.), 30. BxP R-B7, 31. R-KB1 R-KR1, 32. R-B2 R-B8+, 33. K-N2 R/1-R8, 34. P-K8/N+! K-B1 (Forced. If 34...RxN, 35. KxR. If 34...K-N1, 35. N-B6+ K-N2, 36. N-R5+), 35. R/7xP+ KxN, 36. R-B8+ K-K2 (Loses a piece, but 36...RxR, 37. RxR+ KxR, 38. KxR is unappetizing.), 37. R/2-B7+ K-K3, 38. B-B4+ K-K4, 39. R-K7+ N-K3, 40. RxN+ K-Q5, 41. RxR 1-0

**ATLANTA BRING NEW TEAM
TO THE NATIONAL CHESS LEAGUE
By Tom Kayma**

This year, the National Chess League experienced a new Atlanta team: The Atlanta Teens. The Teens, primarily composed of young Atlanta players, were paired against some of the top teams in the country, including the Washington Plumbers and the West Covina Whiz Kids. Although the team's intent was not on winning first place, it can be assured that all players benefited tremendously.

Many of the games were hard fought and, despite the rating differences, there were some upsets. The Teens ended up 1-6, scoring a spectacular upset over South Jersey. The team consisted of many players, which meant that not every player would play every match. Some of the regulars on the team were Mark Coles, Robby Cunningham, Tom Friedel, Jeff Kidd, Michael Kogan, Jay Schneider, and myself.

There was much work that had to be done to get the team organized. First of all, a WATS line and playing site had to be furnished and the problem of finding players became severe at times. Special thanks must go to Steve Schneider, who orchestrated the details, and to all the people who made their homes available for our matches. Thanks must also go to my father, who obtained the WATS line for all our matches.

Hopefully, this will not be the last season for the Teens, so that they and the Atlanta Kings will someday become a force to be reckoned with in the National Chess League. Following is one of my games from our match with West Covina.

Atlanta Teens - West Covina Whiz Kids, National Chess League
Board 4, White: Orfalea, 2099; Black: Kayma, 1701 1. d4 Nf6,
2. c4 g6, 3. f3 d5, 4. cd5 Nd5, 5. e4 Nb6, 6. Nc3 Bg7, 7. Be3
0-0, 8. f4 c6, 9. Nf3 Bg4, 10. h3 Bf3, 11. Qf3 Bd4, 12. Rd1
Bc3, 13. bc3 Qc7, 14. h4 N8d7, 15. h5 e6, 16. Bd3 Rae8, 17. e5
Re7, 18. c4 Na4, 19. Bd4 Ndc5, 20. Bb1 Qa5, 21. Kf2 Qb4, 22.
Qg3 Qb1!, 23. Rb1 Ne4, 24. Kf3 Ng3, 25. Kg3 c5, 26. Bf2 Nc3,
27. Rbe1 b6, 28. a3 Rd7, 29. Kg4 Rd2, 30. Bh4 Rg2 (Times .59
and .57, respectively), 31. Kf3 Re2?, 32. Re3 Na4, 33. Bf6 a6,
34. hg6 fg6, 35. Rd3 b5 (Times .59 1/2 and .59), 36. Rd7 Rf7,
37. Rd8 Rf8, 38. Rd7 Rf7, 39. Rd8 Rf8, 40. Rd7 1/2 - 1/2

1980 Georgia State Championship

Open Section

	Rating	Rd1	Rd2	Rd3	Rd4	Rd5	Tot
1. Boris Kogan	2425	W36	W27	W3	D6	W7	4.5
2. Randy Kolvick	2177	W34	W12	W17	L7	W6	4
3. Guillermo Ruiz	2158	W21	W10	L1	W19	W14	4
4. Mark Coles	2082	W33	W19	L6	W26	W12	4
5. Mike Kogan	Unr.	D8	W23	D9	W27	W17	4
6. Tom Algoe	2254	W30	W15	W4	D1	L2	3.5
7. Terrence DePeaza	2056	W24	D26	W18	W2	L1	3.5
8. Jerry Wheeler	2007	D5	W40	W11	L14	W21	3.5
9. James Vermilya	1964	W16	D13	D5	D20	W22	3.5
10. Bruce Wright	1911	W41	L3	W25	D17	W20	3.5
11. Ervin Underwood	1863	D28	W22	L8	W23	W18	3.5
12. Steven Goins	1918	W37	L2	W24	W13	L4	3
13. Ulysses Martin	1793	W14	D9	D26	L12	W27	3
14. Michael Lucas	2074	L13	W16	W39	W8	L3	3
15. Al Hamilton	1928	W25	L6	D21	D18	W30	3
16. Raymond Quillian	1697	L9	L14	W43	W39	W26	3
17. P.L.N. Murthy	2045	W35	W39	L2	D10	L5	2.5
18. Tom Friedel	1670	W31	W28	L7	D15	L11	2.5
19. Brian McCarthy	1897	W42	L4	W29	L3	D24	2.5
20. William Bacon	1781	D6	D29	W31	D9	L10	2.5
21. Tim Brookshear	1825	L3	W41	D15	W28	L8	2.5
22. Lester Bedel	1687	D6	L11	W34	W31	L9	2.5
23. Ralph Hawkins	1905	D29	L5	W38	L11	W32	2.5
24. George Statham	1750	L7	W43	L12	W42	D19	2.5
25. Don Mullis	1674	L15	W33	L10	D36	W37	2.5
26. Chris Ferrante	1895	W32	D7	D13	L4	L16	2
27. Joseph Scott	1952	W38	L1	W30	L5	L13	2
28. Curtis Graham	2288	D11	L18	W32	L21	D33	2
29. Dennis Davis	1616	D23	D20	L19	D33	D34	2
30. Stephen Whiteman	1859	L6	W42	L27	W41	L15	2
31. Matthew Clark	1926	L18	W35	L20	L22	W41	2
32. Michael Olesak	1354	L26	Bye	L28	W40	L23	2
33. Brad Jeffers	1811	L4	L25	W37	D29	D28	2
34. John Jones	1854	L2	D37	L22	W38	D29	2
35. Ronald Radford	1715	L17	L31	L41	Bye	W42	2
36. Jared Radin	1869	L1	D38	D40	D25	---	1.5
37. Paul Benoit	1623	L12	D34	L33	W43	L25	1.5
38. Marvin Banks	1694	L27	D36	L23	L34	W43	1.5
39. John Simmons	1881	W43	L17	L14	L16	---	1
40. James Pressley	1703	D6	L8	D36	L32	---	1
41. Michael Gordon	1617	L10	L21	W35	L30	L31	1
42. William Renshaw	1440	L19	L30	Bye	L24	L35	1
43. Jeff Maubogne		L39	L24	L16	L37	L28	0

Reserve Section

	Rating	Rd1	Rd2	Rd3	Rd4	Rd5	Tot
1. Richard McIntyre	1551	W16	W7	W6	W5	D2	4.5
2. Gary Thomas	1418	W20	D5	W11	W10	D1	4
3. Bobby Ammons	1458	L10	W18	W16	W8	W7	4
4. Ross Adkison	1253	L6	W19	W17	W15	D5	3.5
5. James Mingle	1582	W17	D2	W8	L1	D4	3
6. Jay Youngblood	1460	W4	W12	L1	L7	W13	3
7. Jeff Kidd	1447	W14	L1	W13	W6	L3	3
8. John Hutchens	1304	W15	W9	L5	L3	W10	3

9. John White	1519	W13	L8	L10	W18	W14	3
10. James King	1236	W3	D11	W9	L2	L8	2.5
11. Julian Ford	1502	W18	D10	L2	L13	W16	2.5
12. Trey Mingle	1199	W19	L6	L15	D16	W18	2.5
13. David Green	1287	L9	W15	L7	W11	L6	2
14. Tommy Lane	Unr.	L7	L16	W19	W20	L9	2
15. Timothy Bright	1532	L8	L13	W12	L4	W20	2
16. Lamar Causey	1310	L1	W14	L3	D12	L11	1.5
17. John Gilloly	1408	L5	W20	L4	---	---	1
18. John Menard	1256	L11	L3	W20	L9	L12	1
19. Val Graffa	1450	L12	L4	L14	Bye	---	1
20. Kris Robbie	Unr.	L2	L17	L18	L14	L15	0

SATURDAY QUADS

SECTION A

PLAYER	RATING	RD1	RD2	RD3	TOTAL
1. Charles Daniel	1796	W4	W3	D2	2 1/2
2. Steve Hunt	2031	D3	W4	D1	2
3. Michael G Gee	1702	D2	L1	W4	1 1/2
4. William Kimes	1322	L1	L2	L3	0

SECTION B

PLAYER	RATING	RD1	RD2	RD3	TOTAL
1. Richard Gossett	Unr.	BYE	W4	W5	3
2. Robert Presswood	1298	L5	BYE	W3	2
3. Frank T Sterr	1287	D4	W5	L2	1 1/2
4. Dr. John Beasley	Unr.	D3	L1	BYE	1 1/2
5. Charles Leflin	1234	W2	L3	L1	1

SUNDAY QUADS

SECTION A

PLAYER	RATING	RD1	RD2	RD3	TOTAL
1. Gary B King, Sr	1668	W4	L2	W3	2
2. Julian B Ford	1448	L3	W1	W4	2
3. Robert Presswood	1298	W2	L4	L1	1
4. Frank Sterrs	1287	L1	W3	L2	1

SECTION B

PLAYER	RATING	RD1	RD2	RD3	TOTAL
1. Ricky Frazier	1203	W2	D3	W4	2 1/2
2. Terrence Fallat	Unr.	L1	W4	W3	2
3. Milus B Maney	1223	W4	D1	L2	1 1/2
4. D. W. Daniels	Unr.	L3	L2	L1	0

ATLANTA DOGWOOD OPEN

PLAYER	RATING	RD1	RD2	RD3	RD4	RD5	TOT
1. P.L.N. Murthy	2045	W6	W14	W5	W2	W4	5
2. James Vermilya	1964	W7	W17	W4	L1	W5	4
3. Ralph Hawkins	1905	W10	L4	D11	W15	W6	3.5
4. Ulysses Martin	1793	W12	W3	L2	W7	L1	3

5. Tom Kayma	1701	W21	W13	L1	W14	L2	3
6. Don Mullis	1674	L1	W8	W16	W13	L3	3
7. Tom Friedel	1670	L2	W22	W7	L4	W15	3
8. Jeff Kidd	1447	D9	L6	D22	W19	W14	3
9. Jay Schneider	1889	D8	W16	L13	W7	---	2.5
10. Charles Waltman	1523	L3	W12	L14	D16	W19	2.5
11. Orlando Rojas	1624	L13	W19	D3	LF	W21	2.5
12. James King	1236	L4	L10	BYE	W7	D16	2.5
13. Bruce Frink	1948	W11	L5	W9	L6	---	2
14. John Smith	1893	W15	L1	W10	L5	L8	2
15. Chris Cabeen	1485	L14	W21	W17	L3	L7	2
16. Arnold Castro	1290	W20	L9	L6	D10	D12	2
17. Charles Jurjevich	1864	W22	L2	L15	---	---	1
18. Neal Foster	1830	W19	---	---	---	---	1
19. Eugene Krieger	1277	L13	L11	W21	L8	L10	1
20. Cassius Downs	1212	L16	BYE	LF	---	---	1 ****
21. George Richardson	Unr.	L5	L15	L19	BYE	L11	1
22. Lewis Spearman	1396	L17	L7	D8	LF	---	.5

6th Southern Classic

Open Section

	Rating	Rd.1	Rd.2	Rd.3	Rd.4	Tot
1. Boris Kogan	2425	W20	W9	W6	D2	3.5
2. Michael Kogan	Unr.	W13	W22	W3	D1	3.5
3. Randy Kolvick	2177	W16	W11	L2	W7	3
4. P.L.N. Murthy	2045	D7	D12	W18	W10	3
5. Ben Sides	1935	L18	W17	W22	W15	3
6. Al Hamilton	1928	W15	W24	L1	D8	2.5
7. Charles Daniel	1795	D4	W14	W19	L3	2.5
8. Jerry Wheeler	2007	W21	D18	D10	D6	2.5
9. Tom Heaton	1961	W27	L1	D12	W20	2.5
10. Ulysses Martin	1793	D14	W26	D8	L4	2
11. Robert Close	1973	W25	L3	D13	D12	2
12. David Raymond	1845	D19	D4	D9	D11	2
13. Jay Schneider	1889	L2	W27	D11	D14	2
14. Jim Mottonen	2013	D10	L7	W21	D13	2
15. Tom Kayma	1701	L6	Bye	W16	L5	2
16. John W. Smith	1893	L3	W25	L15	W23	2
17. Erv. Underwood	1863	L24	L5	W26	W18	2
18. Bruce Raglin	1704	W5	D8	L4	L17	1.5
19. Michael Lucas	2074	D12	D23	L7	---	1.5
20. Ralph Hawkins	1905	L1	D21	W23	L9	1.5
21. Eric Johnson	1782	L8	D20	L14	W22	1.5
22. Ronald Radford	1715	W26	L2	L5	L21	1
23. John Beall	1593	W28	L19	L20	L16	1
24. Mark Coles	2082	W17	L6	---	---	1
25. William Bacon	1781	L11	L16	Bye	---	1
26. Steve Hobart	1951	L22	L10	L17	Bye	1
27. Robt Fentress	1735	L9	L13	---	---	0
28. T. DePeaza	2110	L23	---	---	---	0

Reserve Section

	Rating	Rd1	Rd2	Rd3	Rd4	Rd5	Tot
1. C. Gillespie	1647	W23	W25	W19	W7	D2	4.5
2. Donald Pardlow	1604	D11	W17	W10	W13	D1	4
3. Michael Gorden	1617	W22	L5	W21	W20	W9	4
4. Tom Friedel	1670	D17	D11	W18	W19	W7	4
5. Gary Thomas	1418	W26	W3	L7	D15	W13	3.5
6. William Crowell	1628	L25	W22	D11	W17	W15	3.5
7. James Mingle	1582	W24	W21	W5	L1	L4	3
8. Ross Adkison	1253	W12	W14	L13	D10	D11	3
9. Manuel Keepler	1673	W18	L19	W16	W14	L3	3
10. Darryl Marsee	1650	W20	D16	L2	D8	W19	3
11. Steven Gorin	1383	D2	D4	D6	W16	D8	3
12. Jerry Hamilton	1555	L8	L28	W27	W22	W20	3
13. Don Mullis	1674	D6	W27	W8	L2	L5	2.5
14. Paul Raney	1561	W28	L8	W25	L9	D18	2.5
15. Stephen Barnes	1567	L21	W24	W28	D5	L6	2.5
16. Timothy Bright	1530	W29	D10	L9	L11	W23	2.5
17. Jimmy Holloway	1510	D4	L2	W24	L6	W26	2.5
18. John White	1519	L9	W30	L4	W21	D14	2.5
19. Richrd McIntyre	1551	W30	W9	L1	L4	L10	2
20. Steve Cornack	1492	L10	W29	W26	L3	L12	2
21. Eugene Krieger	1277	W15	L7	L3	L18	W27	2
22. David Campfield	1384	L3	L6	W29	L12	W25	2
23. Julian Booth	1444	L1	L26	W30	W7	L16	2
24. Lawrence London	1331	L7	L15	L17	W27	W29	2
25. Jim Taylor	1404	W6	L1	L14	D26	L22	1.5
26. Allan Campfield	1632	L5	W23	L20	D25	L17	1.5
27. Joseph Bean	1049	Bye	L13	L12	L24	L21	1
28. Richard Gossett	1275	L14	W12	L15	LF	---	1
29. Jeff Mauborgne	Unr.	L16	L20	L22	W30	L24	1
30. James King	1236	L19	L18	L23	L29	Bye	1

Novice Section

	Rating	Rd1	Rd2	Rd3	Rd4	Rd5	Tot
1. Trey Mingle	1199	W11	D2	W4	W3	W7	4.5
2. Marjorie Pruitt	Unr.	W10	D1	W8	W5	W6	4.5
3. Charles Sealock	1074	W9	D4	W6	L1	W8	3.5
4. Joe Hendricks	Unr.	W5	D3	L1	D7	W10	3
5. Grg Richardson	Unr.	L4	W11	W9	L2	Bye	3
6. Brad Richardson	Unr.	W7	D8	L3	W10	L2	2.5
7. D.W. Daniels	Unr.	L6	W9	W10	D4	L1	2.5
8. Pamela Hobart	1079	D6	D6	L2	W11	L3	2
9. Carl D. Mote	Unr.	L3	L7	L5	Bye	W11	2
10. Billy Whitt	895	L2	Bye	L7	L6	L4	1
11. Mark Johnson	Unr.	L1	L5	Bye	L8	L9	1

SATURDAY NIGHT SPECIAL

PLAYER	RATING	RD1	RD2	RD3	RD4	TOTA
1. Jared Radin	1892	X	1	1	1	3
2. Steve Hunt	2031	0	X	1	1	2

3. Gary B King, Sr	1734	0	0	X	1	1
4. Doug Deakin	Unr.	0	0	0	X	0

JUNE QUAD #1

=====

PLAYER	RATING	RD1	RD2	RD3	TOTAL
1. George Statham	1750	W4	W6	W3	3
2. Tom Friedel	1765	W5	D3	W4	2.5
3. James Vermilya	1964	W6	D2	L1	1.5
4. Chris Wickman	Unr.	L1	W5	L2	1
5. Doug Deakin	Unr.	L2	L4	W6	1
6. James King	1236	L3	L1	L8	0

1980 GEORGIA 40/1 CHAMPIONSHIP

PLAYER	RATING	RD1	RD2	RD3	RD4	RD5	TOT
1. Guillermo Ruiz	2104	W8	D4	W14	W2	W3	4.5
2. Ralph Hawkins	1832	W10	W17	W16	L1	W8	4
3. John W Smith, Jr	1809	W23	W17	W12	W5	L1	3.5
4. Robert Cunningham	1621	W20	D1	W11	L7	W12	3.5
5. Eric Johnson	1722	W18	D12	W13	L3	W14	3.5
6. Ed Felts	1761	L9	W21	W18	W17	D7	3.5
7. James Vermilya	2045	L12	W23	W10	W4	D6	3.5
8. Tom Kayma	1558	L1	W19	W20	W16	L2	3
9. Paul Yancey	1290	W6	L16	L17	W19	W15	3
10. James Mingle	1499	L2	W22	L7	W19	W17	3
11. Curtis Gillespie, Jr	1652	W19	D13	L4	W12	W23	2.5
12. Manuel Keepler	1524	W7	D5	L3	L11	L4	2.5 ****
13. Chris Cabeen	1281	W15	D11	L5	L14	W21	2.5
14. Tom Friedel	1577	W7	D3	L1	W13	L5	2.5
15. Don Mullis	1758	L13	L18	W22	W21	L9	2
16. Jay Schneider	1742	W21	W9	L2	L8	---	2
17. Clell O Wood	1562	W22	L2	W9	L6	L10	2
18. Milius Maney	1231	L5	W15	L6	L9	W24	2
19. Lawrence Yancey	1118	L11	L8	BYE	L10	W20	2
20. Ricky Hleap	1022	L4	BYE	L8	D25	L19	1.5
21. Jeff Kidd	1260	L16	L6	W23	W15	L13	1 ****
22. William Kimes	Unr.	L17	L10	L15	D28	D25	1
23. Jack Gillooly	1308	L3	L7	L21	BYE	L11	1
24. Jonathan Feinerman	956	---	---	---	W27	L18	1
25. Philippe Blumenthal	1102	---	---	---	D20	D22	1
26. Sylvia Chandler	1263	---	---	---	---	W28	1
27. Benji Blass	Unr.	---	---	---	L24	W29	1
28. Charles Harper	1030	---	---	---	D22	L26	.5
29. Michael Scharff	1281	---	---	---	---	L27	0
30. Tom Lumsdon	1000	LF	---	---	---	---	0

REGION IV DOUBLES CHAMPIONSHIP March 22-23

PLAYER NAME	RATING	RD1	RD2	RD3	RD4	RD5	T
-------------	--------	-----	-----	-----	-----	-----	---

A) THE WINNERS	2122	W8	W1	W6	L8	WJ	8
1. Randy Kolvick	2161	W15	W17	W5	D3	W19	4
2. Mike Lucas	2082	W16	W18	W6	L4	W20	4

B) CAPT EVANS CREW	1867	W6	DJ	W0	W4	DF	7
3. Bruce Wright	1876	W9	L19	W7	D1	L11	2
4. Steve Whiteman	1859	D10	W20	W8	W2	W12	4

C) SINAI FORCE	1917	W6	W0	L4	W1	W8	
5. Alison Bert	1942	W13	W7	L1	D17	D15	3
6. Jared Radin	1893	W14	W8	L2	W18	W16	4

D) YOUNG & RESTLESS	1817	W1	L6	L8	W8	W8	6
7. Jim Vermilya	1965	W23	L5	L3	W25	W27	3
8. Tom Kayma	1669	W24	L6	L4	W26	W28	3

E) FOREVER "C"	1597	L8	W1	W1	LJ	W8	6
9. Michael Gordon	1617	L3	D21	D23	D19	W25	2
10. Tom Friedel	1577	D4	W22	W24	L20	W26	3

F) SCORPIONS	1900	L1	W8	W6	DH	D8	5
11. Joseph Scott	1900	L17	D25	W13	W15	W3	3
12. John W Smith Jr	1900	L18	W26	W14	L16	L4	2

G) ZONSKO & BOROVSKY	1756	L6	W1	LF	W1	D1	5
13. Gary Southerland	1812	L5	W23	L11	W21	D17	3
14. Jeff Cobb	1701	L6	W24	L12	W7	D18	2

H) EX-CONS	1797	L4	W8	WJ	DF	L6	5
15. Tim Brookshear	1825	L1	W27	W19	L11	D5	2
16. William Bacon	1769	L2	W28	W20	W12	L6	3

I) MARTIN KINSLER	1701	W7	L4	W1	L6	D6	5
17. Ulysses Martin	1801	W11	L1	D21	D5	D13	2
18. Winton Kinsler	1602	W12	L2	W22	L6	D14	2

J) CHINTZY KNITPICKERS	1797	W8	D8	LH	W6	L4	4
19. Ralph Hawkins	1863	W25	W3	L15	D9	L1	2
20. David Lorentzon	1815	W26	L4	L16	W10	L2	2

K) SANS SOUCI	1818	W8	LE	L1	L6	D1	4
21. O Al Hamilton	1904	W27	D9	D17	L13	W23	3
22. Courtney Edwards	1733	D28	L10	L18	LF	LF	

L) THE STING	1283	L0	L6	LE	W8	D1	2
23. Jason Whitehead	1360	L7	L13	D9	W27	L21	1
24. Danny Sisson	1207	L8	L14	L10	D28	W7	1

M) RADFORD CUNNINGHAM	1496	LJ	LF	W8	W0	LE	
25. Ron Radford	1665	L19	D11	W27	L7	L9	1
26. C. Cunningham	1328	L20	L12	W28	L8	L10	1

N) DARK HORSE	1361	LK	LH	LM	LL	LD	
27. Don Knox	1449	L21	L15	L25	L23	L7	0
28. Lacy Rich	1273	D22	L16	L26	D24	L8	1

CHess CLUBS

FLORIDA CHess CLUBS

ORLANDO CHess CLUB
ORLANDO SUNSHINE PARK
PARRAMORE & LIVINGSTON ST
WED. & FRI. 7 PM
SUNDAY 1PM-12AM

President: Larry Storch

Mailing address: Larry Storch, 5999 Curry Ford Rd. #112
Orlando, Fl. 32807

The Orlando Chess Club has a club library, clocks, sets,
and holds tournaments.

UNIVERSITY OF FLORIDA
CHess CLUB
REITZ STUDENT UNION
THURSDAY NIGHT

President: Pete Kurucz

Mailing Address: Pete Kurucz, 853 SW 5th Ave.
Gainesville, Fl. 32601

The University of Florida's Chess Team are the pan American
Intercollegiate chess champions. The winning team consisted
of Small, Nardonea, Schonhaut, and Lawton. The club has
3 masters and 6 experts.

GEORGIA CHess CLUBS

LITTLE FIVE POINTS
CHess CLUB
MEETS AT LITTLE FIVE
POINTS PUB, CORNER OF
MORELAND AND EUCLID
WED. 7:30 (back room)

Organizer: Mike Decker

Mailing Address: Mike Decker, 1269-A N. Morningside Dr.
Atlanta, Ga. 30306

NORTHWEST CHess CLUB
FALLSADES APARTMENTS
CLUBHOUSE
2550 AKERS MILL RD.
WED. 7:00 PM

Organizer: George Richardson Phone: 952-2418

COLUMBUS CHess CLUB

Organizer: James E. Gates

Mailing Address: James E. Gates, 2015 Springdale Drive
Columbus, Ga.

The Columbus Chess Club is meeting regularly (date and
place unknown) and sponsoring tournaments frequently.

GEORGIA CHess CLUBS

GEORGIA STATE CHess CLUB
MEETS EVERY FRIDAY NIGHT AT
GEORGIA STATE STUDENT CENTER
ROOM 461, 5:00 to 10:00

President: Eric Carter

Vice president: Jared Radin

Mailing address: Jared Radin, 1458 Sheffield Dr. NE
Atlanta, Georgia 30329

The Georgia State Chess Club encourages non-students to
attend all of the club meetings. Attended parking is
available for 50 cents at the Georgia State University
parking lots located off of Decatur St. between Piedmont
and Central Ave (the entrance to the parking lot is on
Collins St., a two block street directly under Courtland
St.). The club is planning to hold speed and/or 30
minute tournaments once a month on Friday nights and
occasionally will hold tournaments on weekends.

NORTHEAST CHess CLUB
MEETS EVERY THURSDAY NIGHT
ST. MICHAELS CHURCH, 3323
CHESTNUT DRIVE, 7:00

Organizers: C.O. Wood, Tom Friedel, Jeff Kidd

Mailing Address: C.O. Wood, 2309 Parklake Drive, NE
Atlanta, Ga. 30345 (404) 491-3911

CHECKMATE APARTMENT
CHess CLUB
MONDAY EVENINGS AT 7:00
3214 VALLEY BLUFF DR.
CLUBHOUSE

Organizer: Ron Radford

Mailing Address: Ron Radford, 3326 Spring Meadow Ct.
Tucker, Ga. 30084 Phone: 491-3808

SAVANNAH CHess CLUB
MEETS EVERY MONDAY NIGHT
DUFFIN PARK ACTIVITIES
BUILDING, 7:00

President: John Lauff

Vice President: Brad Jeffers

Mailing Address: John Lauff, 130 Andover Drive
Savannah, Ga. 31405 355-3979

John Lauff has informed me that in the last 5 years
the Savannah Chess Club has missed only one meeting !
A recent tournament in Savannah attracted 45 players
(details next issue ?). George Koltanowski is
scheduled to give a lecture to the Savannah Chess
Club on Oct. 17.

CHESS TOURNAMENTS

**FLORIDA STATE CHESS
CHAMPIONSHIP**
AUG 30-SEPT.1 see ad

GEORGIA OPEN

SEPT. 6-7 ATLANTA

5-SS, 45/2, Marriott Hotel, 246 Perimeter Center Pkwy. NE
(I-285 at Ashford-Dunwoody) Atlanta, Ga. 30346 In 2 sectns.

OPEN: EF: \$16 if rec'd by 9/1 \$(500 b/40, top 2 gtd.)
150-100-75. Cat 1&2 each 75, under 1600 25; trophies to
1st, Cat 1&2.

RESERVE: under 1600, EF: \$14 if rec'd by 9/1. \$(350
b/35) 100-60-40, Cat. 4, 5/6, Unr. each 50; trophies to
1st, Cat. 4,5/6,Unr.

BOTH SECTIONS: EF: \$2.50 more at site, GCA or other
state required, Rg. ends 9:30, ROUNDS: 10-3-8, 9-2
ENTER: L. Thad Rogers, 3055 General Lee Rd., Macon, Ga.
31204. No Smoking

ST. PETE CHESS CLUB FALL OPEN

SEPT. 20-21 ST. PETE.

5-SS, 45/2, St. Petersburg Chess Club, 540 4th Ave. No.,
St. Pete., Entries limited to first 50,, EF \$13 if mailed
by 9/15; \$15 at site. \$G: 100-50 B30, C 20; if 20 or more:
175, 80, b 50, C 30, Rg. ends 8:30 AM, Rounds 9-2-7, 10-3.
ENT. Cantrell's Chess Books, 4040 67th Ave. N., Pinellas
Park, Fl. 33565

BULLDOG QUADS

SEPT. 28 ATHENS

3-RR,40/1, Athens Federal Savings and Loan, Gaines School
Rd., Athens, Ga. Reg. 10-10:45AM, Rds. 11-11:30-4 EF: \$5.50
if rec'd by 9/14, \$7.00 at site. Prizes: Trophy to first
each section. GCA reg'd, other states OK. ENTER: Steve Hunt
,66 Maypop Lane, Decatur, Ga. 30035. (404-987-9264). No
smoking. Will have unrated section if 4 non-USCF members
attend.

2nd ANNUAL COLUMBUS WEEKEND TOURNAMENT

OCT. 3-5 Pompano Beach

5-SS, 40/2, Pompano Beach Recreation Center, 1801 NE 6th St
Pompano Beach. In 3 sections:

SECTION I: EF \$20 by 10/1, \$G 300, 150, 100

SECTION II: EF \$15 by 10/1, \$G 170, 100, 75

SECTION III: EF \$10 by 10/1

All Sections: EF \$3 more at site, RG. 6-7:30 PM, Rd. 8,10-3
9-2. ENT.Ronald Robbins, 13490 NW 3 Pl.,Plantation,Fl. 33325

6th SOUTHEASTERN CHESS CONGRESS

OCT. 4-5 ATLANTA

5-ss, 45/2, Marriott Hotel, 246 Perimeter Center Pkwy. NE
(I-285 at Ashford-Dunwoody exit) Atlanta 30346, EF: \$16.50

if rec'd by 9/26; \$18 at site. \$(850 b/70, top 2 gtd.):
150-100, Cat. I, II, III, IV, V/VI, UR. each 100, trophies
to 1st and 2nd. A state membership required.

RG: ends 9:30, ROUNDS: 10-3-8, 9-2 ENTER: L. Thad Rogers,
3055 General Lee Rd., Macon, Ga. 31204. NS.



P. L. N. Murthy

1980 FLORIDA CHESS CHAMPIONSHIPS
AUGUST 30, 31, & SEPTEMBER 1
SIX ROUND SWISS SYSTEM IN 4 SECTIONS
PRINCESS MARTHA HOTEL, St. Petersburg, FL

\$2000 GUARANTEED CASH PRIZE

OPEN: Entry Fee: \$25 if rec'd by 8/25
to all Cash Guaranteed: \$375-1st; \$150-2nd; \$100-3rd.
Class Prizes: Expert: \$125-1st; \$50-2nd; Top A-\$100;
\$50-2nd; Top B & below \$75; \$25-2nd.
Time Control: 40/2

AMATEUR: Entry Fee: Below 1850 or unrated
\$20, if rec'd by 8/25
Cash Guaranteed: \$225-1st; \$150-2nd; \$100-3rd;
Class Prizes: \$75-B; & \$50-C & below
Time Control: 40/105

RESERVE: Entry Fee: Below 1550 or unrated
\$15, if rec'd by 8/25
Cash Guaranteed: \$125-1st; \$90-2nd; \$65-3rd; \$35-4th
Class Prizes: \$50-D; & \$30-E
Time Control: 40/105

BEGINNERS: August 30, 1980 NON-RATED BEGINNERS TOURNAMENT
4 ROUND SWISS
1200 & under, and unrated
All Receive: Free FCA membership and Free Chess Book
upon entry
Prizes: Plus Scores: receive Free Chess Book
Score of 3 or better: receives free
USCF Memberships
Entry Fee: \$10 advanced or at site
Rounds: 12-2-4-7
Register: 8-10 a.m., August 30, 1980
Time Control: 30/30

REGISTRATION 8-10 a.m., August 30, 1980
ROUNDS 12-7,11-6,9-3
ENTRIES Florida Chess Assn, 4040 67th Ave. N., Pilellas Park, FL 33565
MEMBERSHIPS ALL (except Beginner section) USCF & FCA
TROPHIES Top three in Open, Amateur, and Reserve
HOTEL RATES \$16 Single, \$20 Double, \$25 Triple
HOTEL ADDRESS 4th St. at First Ave. N., St. Petersburg, FL 33731
HOTEL TELEPHONE 813-898-9751
BOOK PRIZES RESERVE SECTION for Plus Scores not receiving other prizes
SMOKING No smoking will be allowed in the Tournament Room

BUFFET LUNCH
SUNDAY 4 P.M.
\$5.00

MASTERS
FREE ENTRY (\$16)
FOR FIRST FIVE
MASTERS TO
PRE-REGISTER

WOMEN
FREE ENTRY
FEE

ANNUAL MEETING
FOLLOWING
5 PM sharp

GEORGIA OPEN
SEPT. 6-7 ATLANTA, GA.
PLAYING SITE: MARRIOTT HOTEL
246 PERIMETER CENTER PKY.
I-285 AT ASHFORD DUNWOODY
TYPE: 5 ROUND SWISS, 45/2
ROUNDS: REG. ENDS 9:30 10-3-8, 9-2
OPEN SECTION:
ENTRY FEE: \$16.00 IF REC'D BY 9/1
PRIZES: (500 b/40, TOP 2 Gtd.)
150-100-75
CAT. I & II: EACH 75
UNDER 1600: 25
TROPHIES: 1st, Cat I & II
RESERVE SECTION:
ENTRY FEE: \$14.00 IF REC'D BY 9/1
PRIZES: (350 b/35) 100-60-40
CAT. 4,5/6,Unr.: EACH 50
TROPHIES: 1st, CAT4,5/6,UNR
BOTH SECTIONS: ENTRY \$2.50 MORE AT SITE
ENTER: L. THAD ROGERS
3055 GENERAL LEE RD.
MACON, GA. 31204

Southern Chess
1458 Sheffield Drive NE
Atlanta, Ga. 30329
Return Postage Guaranteed

BULK RATE
U. S. POSTAGE PAID
PERMIT NO. 178
ATLANTA, GA.

M. LEE HYDER
33 LONGWOOD
AIKEN, SC 29801