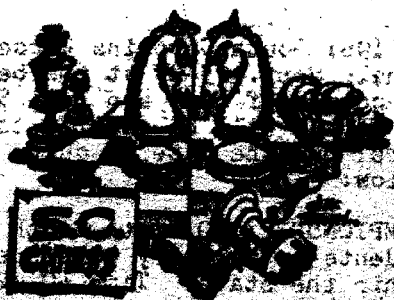


State Championship



SCCA

NEWS

IN THIS ISSUE

Page

State Championship Announcement	2
News	1-2, 12
Games	6, 10
Problem	11
Statistics	11
Editorials	12, 13
Results	14, 15
Complete S. C. Rating Lists	16, 17
Grand Prix Tournament Announcement	18
Other Coming Events	19

State championship

The 1981 South Carolina Closed Chess Championship will be held Sept. 25-27 at the Seibels Bruce Building at the corner of Lady and Bull Streets in Columbia. The format will be similar to that followed in recent years, but the date is quite a bit earlier. Details follow:

CHAMPIONSHIP: Open to South Carolina residents, and students or military personnel temporarily residing within the state. Time 40 /2 hrs. Prizes \$2100-60-40. Trophies to 1st, top A, top Jr. Register: 6:00 to 7:45 on 9/25; rounds 8 pm/ 9:30 am, 3 pm/ 9:30 am, 2:30 pm. Advance entry fee \$12 if received by 9/22.

AMATEUR: Open to players rated under 1800. Time 40/90 min. Prizes \$375-40-30, trophies to 1st, top C. Register: 8 am to 9:15 am on 9/26. Rounds 9:30,3, 7:15/ 9:30,2. Advance entry fee \$10 (by 9/22).

RESERVE: Open to players rated under 1400 or unrated. Time, registration, rounds as Amateur Section. Prizes \$250,30,20. Advance entry fee \$5 (by 9/22).

ALL SECTIONS: Entry fee \$3 more at site. First prize guaranteed in each section, other prizes based on 25 entries. Advance entries to Don Lemaster, 1471 Pine St., West Columbia, SC 29169.

SPECIAL NOTE FOR AMATEUR AND RESERVE SECTIONS:

A half point bye will be given in Rd. 4 if requested with an advance entry (\$1 extra entry fee).

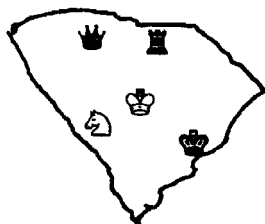
MEMBERSHIP OF EACH PLAYER IN THE SCCA IS REQUIRED IN ALL SECTIONS; IT MAY BE OBTAINED AT REGISTRATION.

SCCA BUSINESS MEETING: Will be held at the site at 2:15 p. m. on September 26.

**OTHER TOURNAMENT ANNOUNCEMENTS INSIDE BACK COVER
AND PAGE 14**

CHESS NEWS FROM AROUND THE STATE

It has been a busy spring in South Carolina! Tournaments, matches, and club championships have been held all over the state, and it's hard to know where to start to report them. Let's go first to:



Columbia

In the capital city a five round tournament decided the championship of the Palmetto Chess Club, and Jack Berry continued his winning ways by taking the title on tie-break. David Erb and David Haimes matched Berry's 4-0 score in the 18-player competition, but Berry's pairings were found to have been tougher. Don Lemaster directed.

Berry also won the USC Saturday Swiss #1, a four-round event held on April 4. Once again Erb was second. There were eleven players in the tournament; and once again, Don Lemaster directed. One difference: this time Berry beat Erb in the last round, and so took a clear first with a perfect score.

Charleston

Between the Ashley and the Cooper Paul Tinkler is champion! Tinkler scored 4-0 to win the championship of the Charleston Chess Club during the month of April. Pat Hart beat out Edwin Tobias and Lindsay Blanks on tie-breaks to take second. An even dozen players participated in the Swiss tournament. Pat Hart and Henry Cabaniss directed.

The Palmetto CC also elected a new slate of officers. David Causey will be President for the coming year, with Lindsay Blanks at his side as Vice-President. Pat Hart will take care of the cash as Treasurer.

On to--

Spartanburg

Lots of action here! State Champ Klaus Pohl raced through the Spartanburg Supercyclone with 6½ points of 7, drawing with Ernie DeGuzman. DeGuzman in turn came a cropper at the hands of Jim Mottonen of North Carolina, whose 5½ points made him clear second! Twenty players enjoyed plenty of chess with seven rounds in two days. Ten-year-old Joel DeGuzman achieved a performance rating of 1753! He will be a player to watch during the next few years, and perhaps in Columbia this fall. (Continued overleaf)

STATE CHESS NEWS (CONTINUED)

An interesting sidelight of the Spartanburg tournament was the participation of two players from the Chicago area, who had never met each other before. (It was determined presently that one was a White Sox fan and one a Cub fan. Clearly, they move in different circles.)

Along with the Supercyclone, three quad tournaments were held. Spencer Mathews and John Anthony each won one, while Charles Waltman and Jim Smith tied at the top of the third.

In a second big day of chess in the Spartanburg area, thirty-two players turned out on April 27 to play in the Spartanburg CC Open. The tournament was competed in four eight-man sections according to rating, and when the dust had cleared Richard Cohen of Anderson was alone at the top of the top section. For this he owed some thanks to Jack Berry, who defeated the redoubtable Ernie DeGuzman in the first round despite a rating difference of 350 points or so in Ernie's favor! Berry went on to take a clear second as Mickey Bush held DeGuzman to a draw--and Cohen just kept winning.

On down the line in the other sections Herbert Marshall of Cullowhee, NC finished first ahead of Ralph Hughes of Greenville in the second group; Virgil Latham of Anderson beat out a whole crowd of people (including Joel DeGuzman) by $\frac{1}{2}$ point in the next section--Sam Goodman of Spartanburg was second on tie-break--and Orville Harris of Landrum and Ross Klatte of Spartanburg also were in the tie; and finally Dean Jackson of Greer made his first tournament a good one with a 3-0 score.

And while all this was going on, Spartanburg Methodist College was beating a team from USC-Spartanburg in an eight-board match. Quite a day of chess in Spartanburg! Incidentally, Don Lemaster did not direct the Spartanburg CC Open. David Williams did; But Lemaster did direct the Supercyclone! That man is everywhere. Mickey Bush helped him.

Finally, in

Aiken

It was Chuck Braun going undefeated again to win a 12-player Swiss on May 16. Braun had 3-0, while our President, Phil Jackson, could only manage 2 $\frac{1}{2}$ - $\frac{1}{2}$ for second. Bill Floyd took a draw from him in a tight last-round game. Braun had to work, though, for Walter McDowell took him 100 moves! Lee Hyder directed with Bill Dodgen's help.

CHESSE RESULTS (CONT.)

We have one more! In Lancaster, June 6--

Ralph Greg Martin of Florence scored 3-0 to take the June Invitation Tournament. No fewer than five players tied for second in the twelve-player event: Marion Mehaffey, Richard Van Hall, Allon H. Thompson, David M. Griffin, and Arturo Martin DeNicolas.

Now--for all you statistics fans, we present some cross-tables:

Lancaster June Invitational, June 6

Player, hometown, rating	Results	Rd.			Score
		1	2	3	
1 Ralph Greg Martin, Florence	1738	W7	W5	W4	3
2 James E. Hughey, Bennettsv'l	1731	D9	L8	L6	$\frac{1}{2}$
3 Marion Mehaffey, Lancaster	1712	L8	W11	W7	2
4 Richard Van Hall, "	1673	W10	W6	L1	2
5 Allon H. Thompson, Charlotte	1657	W11	L1	W8	2
6 David M. Griffin, Charlotte	1641	W12	L4	W2	2
7 Marvin Weaver, III Ben'ville	1599	L1	W9	L3	1
8 A. Martin De Nicolas, York	1579	W3	W2	L5	2
9 Martin Mahaffey, Lancaster	1515	D2	L7	W10	$1\frac{1}{2}$
10 Pedro Martin, York	1388	L4	W12	L9	1
11 Tony L. Cato, Marshville NC	1325	L5	L3	W12	1
12 Ken Thomas, Lancaster	Unr.	L6	L10	L11	0

Aiken Spring Open, May 16

Player	Results by Rds.			Total
	1	2	3	
1 Charles E. Braun, Aiken	W12	W7	W4	3-0
2 Philip F. Jackson, Columbia	W9	W3	D7	$2\frac{1}{2}-\frac{1}{2}$
3 Jeff Dexter, Aiken	W5	L2	W10	2-1
4 Walter McDowell, Aiken	W8	W6	L1	2-1
5 Steven Salzberg, Columbia	L3	W11	W12	2-1
6 Wm. R. Bland, Jr., Columbia	W10	L4	W8	2-1
7 Wm. B. Floyd, Columbia	W11	L1	D1	$1\frac{1}{2}-1\frac{1}{2}$
8 Wm. H. Dodgen, North Augusta	L4	W12	L6	1-2
9 Michael Graves, Aiken	L2	L10	W11	1-2
10 John D. White, Aiken	L6	W9	L3	1-2
11 Robert L. Hyder, Aiken	L7	L5	L9	0-3
12 David Boyd, Aiken	L1	L8	L5	0-3

Bookter-Floyd, Columbia 1979: 1 P-K4 P-K4 2 N-KB3 N-QB3
 3 B-N5 P-Q4?! 4 BxN+ (better PxP) PxB 5 P-QN3? PxP 6 NxP?
 Q-N4 7 NxBP/3 QxNP 8 R-B1 B-KN5! 9 P-KB3 PxP 10 R-B2
 Q-N8+ 11 R-B1 P-B7 mate!

GAMES

Edited by C. E. Braun

We have only a few tournaments represented, and that's because we haven't gotten the games from the others. It bears repeating: we can't print what we don't have!

First, from the Charleston Chess Club Championship, a decisive game between Paul Tinkler and Pat Hart.

Notes by Hart

1 P-K4 P-QB4 2 N-K2 N-QB3 3 P-KN3 P-Q4!(A) 4 B-N2 PxP
5 BxP P-K4(B) 6 O-O B-R6 7 B-N2 Q-Q2 8 P-Q3(G) N-B3
9 QN-B3 B-K2 10 B-K3 O-O 11 BxB QxB 12 P-B3 N-Q5 13 Q-Q2
QR-Q1 14 BxN KPxB 15 N-Q1 B-Q3 16 P-QB4 QR-K1 17 N-B2
Q-K3 18 N-K4 NxN 19 BfxN P-B4 20 N-B4 Q-KR3 21 QR-K1 PxP
22 PxP R-K2 23 R-K2 R/1-K1 24 Q-K1 BxN 25 RxB Q-K3(D)
26 P-K3 P-KN4 27 R-B3?(E) Q-KN3? 28 P-K5(F) Q-N2? 29 R-B5!
Q-N3 30 P-N4 P-KR3 31 Q-N3 P-KR4? 32 P-KR3 P-R5? 33 Q-B3
R-Q2 34 R-B6 Q-N8+ 35 K-N2 K-N2 36 P-K6 R/2-K2 37 R-KB2
White won on time.

Notes:

- A. Black has already equalized.
 - B. Prevents N-B4 and prepares B-R6.
 - C. Concedes that the center has been lost.
 - D. Both players are in severe time trouble.
 - E. Should be fatal; Black's Q-N5 would win a P and the game.
 - F. Black should take the draw (I hate draws).
- At the end White had just over a minute left.

From the 1980 S. C. Championship: D. L. Purvis vs. Bill Floyd:

1 P-K4 P-K4 2 N-KB3 N-QB3 3 B-N5 P-QR3 4 B-R4 N-B3 5 O-O
B-K2 6 R-K1 P-QN4 7 B-N3 P-Q3 8 P-B3 N-QR4 9 B-B2 O-O
10 P-Q4 B-N5 11 PxP BxN?! 12 QxB PxP 13 N-Q2 P-B4 14 N-B1
N-B3 15 N-N3 R-K1 16 N-B5 B-B1 17 B-N5 N-N1?? 18 N-R6+
PxN (Forced, else the Q goes) 19 BxN Resigns.

From the same event, Reserve Section, a game that's a bit different: S. Salzberg vs. P. Anderson.

1 P-Q4 P-Q4 2 P-QN4(A) P-K3 3 P-QB3 N-KB3 4 P-QR4 P-QN3
5 P-R5 B-N2 6 PxP RPxP 7 RxB BxB 8 Q-R4+ B-B3 9 P-N5
B-Q2 10 N-KB3 B-Q3 11 N-K5 O-O 12 NxB(B) QxN 13 P-QB4
PxP 14 QxP P-B3 15 N-R3 PxP 16 NxP N-B3 17 NxB QxN 18
Q-Q3?(C) QxP 19 Q-KN3 R-Q1(D) 20 Q-Q3 N-QN5 21 QxQ RxQ
22 P-K3 N-B7+ 23 K-K2 R-Q4 24 P-N3 N-K5 25 B-QN2 P-KB4
26 B-N2 R-Q7+27 K-B3(E) RxBmate. (Notes next p.)

Notes to Salzberg-Anderson

- A. Out of the book already! (Not so fast, Chuck. I have a book with this in it! LH)
 - B. Again White neglects development. Better is B-KN5.
 - C. 18 B-N2 or P-K3 were in order.
 - D. Threatens mate.
 - E. If 27 K-B1 RxP+ 28 K-N1 NxKP 29 BxN R-B8 mate.
- A nice finish.

We have the two decisive games from the Aiken Spring Open--but first, an interesting miniature from the same event.

Bill Dodgen vs. David Boyd; Two Knights Defense.

1 P-K4 P-K4 2 N-KB3 N-QB3 3 B-B4 N-B3 4 N-N5 P-Q4 5 PxP NxP 6 NxBP!? KxN 7 Q-B3+ K-K3 8 N-B3 N-Q5? 9 BxN+ QxB 10 QxQ+ K-B3 11 N-K4+ K-N3 and resigned.

White's sixth move is the "Fried Liver Attack"--a fascinating line that is rarely seen any more because 6 P-Q4! is still stronger.

After Black's best move at move 8, N-N5, it is difficult for White to win. For example 9 P-QR3 NxP+ 10 K-Q1 NxR 11 NxN K-Q2! and Black is ok. A better plan for White is 9 Q-K4 P-B3 10 P-QR3 N-R3 11 P-Q4 N-B2 12 B-B4 K-B2 13 BxP B-K3 14 O-O-O NxN 15 Q-B3+! K-K2! 16 BxN QxB 17 QR-K1! N-Q4 18 BxN PxR 19 QxP Q-B3 20 RxR+ QxR 21 QxP+ K-B3 22 QxR, and White has four pawns for the piece.

Now we have one of the Round Three games: Philip Jackson (then undefeated) vs. Bill Floyd--Floyd was White in a Q Gambit, Slav Defense. Notes by Floyd.

1 P-Q4 P-Q4 2 P-QB4 P-QB3 3 KN-B3 KN-B3 4 N-B3 QN-Q2 5 PxP PxP 6 B-B4 P-QR3 7 P-KR3 P-K3 8 P-K3 B-K2 9 B-Q3 O-O 10 O-O P-QN4 11 P-QR3 N-N3 12 P-QN4?(A) B-N2 13 QR-B1 N-B5 14 Q-N3 N-K5 15 R-B2 B-Q3 16 BxB QxB 17 BxN PxR 18 N-Q2 NxN 19 RxN QR-B1 20 R-B2 R-B5 21 KR-B1 KR-B1 22 Q-N2 P-K4(B) 23 PxP(C) QxP 24 R-Q1(d) P-KR4 25 N-K2 QxQ 26 RxQ R-B7 27 R-Q2 RxQR 28 RxR R-Q1 29 N-Q4 B-Q4 30 R-B2 B-B5 31 P-KR4!(E) R-Q3 32 P-B3 PxP 33 PxP K-B1 34 K-B2 P-N3 35 P-R4 K-K2 36 PxP PxP 37 R-B3 K-B3 38 P-B4 R-R3 39 N-B2 K-B4 40 K-B3 B-Q4+ 41 K-N3 K-K5 42 N-R3 R-B3 43 NxP R-N3 44 R-B5 B-K3 45 K-B2(f) K-Q6 46 N-Q4 RxP 47 NxB PxN Draw agreed.

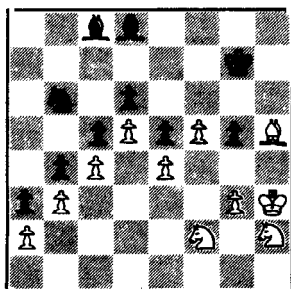
Notes:

- A. This created a gaping hole, around which the game revolved for the next ten moves.
- B. Q-B2 here was much better.
- C. N-K2 was much simpler.
- D. Merely a trap, but nothing lost in trying! (Floyd is too modest. It's a neat way out of the several pins. LH)
- E. Making sure Black's pawns will be on light squares.
- F. Missing R-K5+ with winning chances.

GAMES --- Ctd.

While Jackson was being held to a draw, the other two undefeated players, Chuck Braun and Walter McDowell were playing on for a hundred moves--and they finished first! McDowell is, as you will see, a sharp tactician with an interesting style, but he missed his chance when it came on the fiftieth(!) move. Braun was White, and furnished most of the notes.--LH

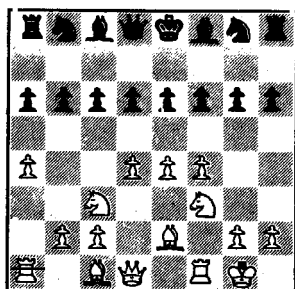
1 P-K4 P-Q3 2 P-Q4 P-QB3 3 N-QB3 P-QR3 4 P-B4 P-K3 5 N-B3 P-B3 6 B-Q3 N-KR3 (Black is waiting for White to over-extend himself.) 7 P-B5 N-B2 8 N-KR4 P-K4 9 P-Q5 B-K2 10 B-K3 P-B4 11 O-O P-QN4 12 Q-R5 (White obliges nicely.) 12 -- P-N3! 13 Q-N4 P-N4 14 N-B3 P-KR4 15 Q-N3 P-R5 16 Q-B2 P-R6? One push too many. (White is in a passive position on both sides of the board; if Black develops he will be able to pick the point of breakthrough. LH) 17 P-KN3 N-R3 18 P-N3 N-N5 19 Q-K2 NxR 20 QxN Q-Q2 21 N-Q1 B-Q1 22 N-B2 Q-KN2 23 P-B4 B-Q2 24 K-R1 B-R4 (The B is best at Q1. 23--N-Q2 and --N-N3 would have been better. LH) 25 B-K2 B-N3 26 N-N1 R-KR2 White now grabs the P and braces for the attack. 27 N/1xP Q-R1 28 K-N2 R-R2 29 R-R1 P-QN5 (Black's counterplay is still on the queenside, even though it will take him some time to arrange it. Closing it up is too committing for my taste. LH) 30 N-N1 B-B1 31 N-B3 P-R4 32 N-N4 P-R5 33 Q-Q2 P-R6(?) See last note. 34 R-KN1 B-Q1 35 P-R4 QR-KN2 36 Pxp Pxp 37 R-R2 RxR+ 38 N/3xr N-Q2 39 R-KR1 B-K2 40 Q-Q1 K-Q1 The first time control is reached, and Black has used only 17 minutes. White looks ok with a protected, passed extra pawn. 41 N-B3 R-R2 42 RxR QxR 43 Q-KR1 QxQ+ 44 KxQ K-K1 (The exchange of major pieces has not helped White. He can't find an entry point.) 45 K-N2 K-B2 46 K-R3 B-Q1 47 N/3-R2 K-N2 48 N-B2 N-N3 49 B-R5? N-R5? (Black goes after the QRP but he can't get it. His opportunity to turn the tables was NxBP! Then if 50 Pxn P-N6 wins, or 50 B-K2 N-Q7. After 50 N-B1 N-R4 the QBP will soon advance, and White's position is desperate.) 50 N-Q1 N-N7?! 51 B-K2 B-Q2? (After 51--NxN 52 BxN B-Q2 Black should be able to draw, e. g. 53 B-R5 B-R5! 54 B-Q1 B-K1.) Now White wins a second pawn and closes the kingside. 52 NxN Pxn 53 B-Q3 K-R3 54 P-N4 K-N2 55 N-B1 B-B1 56 N-K3 K-B2 57 N-Q1 B-Q2 58 NxP B-R4 59 K-N3 K-B3 60 K-B3 B-K1 61 K-K2 K-K2 62 K-Q1 B-Q2 63 K-B2 B-K1 Now White's job is to advance the queen side pawns without ending up with bishops of opposite colors. 64 N-Q1 K-Q2 65 K-N2 K-K2 66 P-R3 Pxp 67 Kxp B-N5+ 68 K-N2 K-B3 69 N-K3 B-R4 70 N-B2 B-QN3 71 P-N4 Pxp 72 NxP B-R5 73 B-K2 B-B4 74 N-R2 B-K1 75 N-B3 B-Q5 76 K-N3 B-K6 77 N-R2 B-B4 78 N-N4 B-Q2 79 N-Q3 B-K6 80 K-R3 B-K1 81 B-R4 B-B2 82 B-B6 B-Q2 83 K-R4 B-R4?! One last trick up his sleeve? (Continued next page)



Braun vs. McDowell, Ctd:
 84 PxB P-N5 85 N-B2 P-N6 86 N-R3
 K-N2 87 B-K8 B-K6 Black can now
 force bishops of opposite colors,
 but it's too late.
 88 K-N5 P-N7 89 K-B6 B-B4 90 K-Q7
 B-N5 91 K-K7 K-R3 92 P-B6 B-B4
 93 P-B7 KxP 94 P-B8(Q) K-N5 95
 Q-B5+ K-N6 96 B-Q7 K-R7 97 Q-N4
 B-N5 98 Q-K2 B-B4 99 B-N4 K-N6
 100 B-Q3 Resigns.
 A game that provokes study and
 analysis!

Braun - McDowell after
 49 B-R5?

The opening of Braun-Mc-
 Dowell was a bit exotic; it
 challenges the current wisdom
 that games are inevitably
 won and lost in the opening.
 Well, you can win a game in
 the opening, or lose it for
 that matter, but finding a
 winning method against an
 exotic position is just
 not as simple as Messrs.
 Reinfeld and Horowitz (and the publishers of any number
 of opening books) would have you believe. We close our
 games selections with a small collection of unusual
 openings, where the eventual result didn't have much to
 do with what went before.



Wicher-Nezhni after 8--h6

Wicher vs. Nezhni, 1980 American Open

1 e4 d6 2 d4 c6 3 Nc3 a6 4 a4 e6 5 f4 b6 6 Nf3 g6
 7 Be2 f6 8 O-O h6 (Diagram) 9 Be3 Ne7 10 Qe1 Nd7
 11 Nd2 Bg7 12 Nc4 Qc7 13 Qg3 d5 14 Nd2 f5 15 exf5
 exf5 16 Nf3 O-O 17 h4 Bb7 18 Kh2 Rae8 19 Rae1 Kh7
 20 Bd3 c5 21 Qf2 Nf6 22 Ne5 Nc6 23 Be2 cxd4 24 Bxd4
 Nxd4 25 Qxd4 Nd7 26 Nd5 Bxd5 27 Qxd5 Ne5 28 fxe
 Re5 29 Qc4 Rc5 and White resigned.

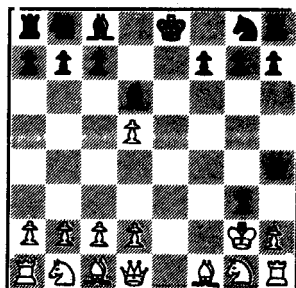
Right in keeping with our theme is this game where both players work diligently to avoid the obvious throughout.

H. Herbert Howe vs. Lee Hyder, correspondence, 1952.

1 P-K4 P-K4 2 P-KB4 PxP 3 K-B2 P-Q4 4 PxP Q-R5+ 5 P-N3
 6 PxP+ 6 K-N2 B-Q3 7 Q-K1+ N-K2 8 PxP Q-B3 9 R-R4 O-O
 10 N-QB3 B-KB4 11 N-K4 BxN+ 12 QxB Q-N3 13 QxQ NxQ 14 R-R4
 15 P-QB3 15 PxP NxP 16 P-Q4 KR-B1 17 P-B3 P-QR3 18 P-QN4
 19 R-R3 QN-K2 20 B-Q3 N-Q4 21 B-K4 N/3-K2 22 R-N3
 23 B-B3 R-R2 24 N-K2 R/2-B2 25 B-Q2 P-KN4 26 P-QR4
 27 BxN+ NxR 28 PxP PxP 29 R-R6 BxQNP 30 PxR R-B7
 31 R-Q3 R-K1 32 K-B1 NxP 33 BxN R/1xN 34 R-R6 R-B7+ 35 K-N1
 36 R-B5 36 R-R4 R-N7+ 37 K-B1 P-R4 38 PxP R/B7-B7+ 39 K-K1
 40 R-QN7 40 K-B1 QR-B7+ Drawn!

Brown vs. Kramer, Philadelphia

1976: 1 P-KB3 P-K4 2 K-B2 B-B4+
 3 P-K3 P-Q4 4 P-KR4 P-Q5 5 B-K2
 6 N-KB3 6 P-QR3 N-B3 7 P-QN4 B-N3
 8 P-N5 N-K2 9 P-R4 P-K5 10 P-KB4
 11 P-KN3 N/3-Q4 12 N-QR3
 13 N-B4 Q-KR3 14 NxR QxN
 15 P-QR4 Q-KB3 16 QR-R3 O-O
 17 P-N4 N-Q3 18 K-N3 B-Q2 19 B-N2
 20 Q-K2 20 Q-R1 N-B3 21 BxQP N/B-K1
 22 P-R5 P-KR3 23 P-B4 Q-K3
 24 Q-B3 QR-B1 25 P-KB5 Q-K2
 26 BxRP NxBP+ 27 PxN Q-N4+
 28 K-B2 QxBP+ 29 K-K1 Q-N4
 30 N-R3 BxN 31 RxR Q-N7 32 B-B1 Q-N5
 33 B-Q4 P-KB4 34 B-K5 P-B5 35 PxP R-B2 36 P-B5 R-B4 37
 38 B-KN3 Q-R5 38 B-R3 Time forfeit.



Howe-Hyder after
 6--B-Q3

(From Andrew Soltis, Catalog of Chess Mistakes. A good book.)

Reuben Fine vs. three consulting players, Sept., 1943,

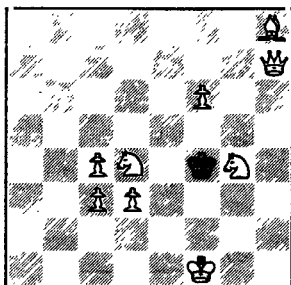
Guatemala City: 1 e4 b6 2 d4 Ba6 3 c4 c5 4 Nf3 g6 5 Nc3
 6 d5 Nh6 7 Bd3 O-O 8 O-O d6 9 Bf4 Nd7 10 Nd2 Bc8 11 Bg3
 12 Be2 f5 13 f4 Neg4 14 Qb3 Bd4+ 15 Kh1 Ne3 16 Rf3 Fxe4
 17 Ncxe4 Nhf5 18 Be1 e6 19 h3 exd5 20 cxd5 Bb7 21 g4
 22 Qxd5+ Nxd5 23 gxf5 Ne3 Cohn in Chess in Guatemala
 breaks off here, noting that Black should win but the game
 was eventually drawn.

Finally, a miniature from Bill Wall's Dayton Chess Club
Review. Bill was a leading organizer in North Carolina
 until the Air Force sent him to Ohio. Glicksteen-Lawrence,
 Columbus, 1971: 1 f4 e5 2 fe d6 3 ed Bd6 4 Nf3 g5 5 e4
 6 Nd4 Qh4 7 Ke2 g3 8 d3 Qh2 9 Rh2 gh 10 Resigns
 Other short games in this issue are also from Wall!

KOLTY'S PRESENT

A thick letter from George Koltanowski, and in it the most surprising contents: sixty-six original chess problems dedicated by Kolty to his friends around the country. Most remarkably, the one shown at right was dedicated to "Dr. and Mrs. Lee Hyder, S. C."!

Whoopie! Nobody ever did that to me before, and they probably won't again, but I surely enjoyed this one. Thanks, George!



White mates in two moves.

Footnote. It took me a few relaxed minutes to solve it. It took the Sargon computer program about 20 seconds. Oh, well, I don't think the machine had as much fun as I did.

Give up? Solution next issue. Gotta keep you coming back.--LH

SOUTH CAROLINA'S CHESS POPULATION

Our indefatigable statistician, Don Lemaster, who favored us with the rating lists in this issue, also determined the distribution of players by rating--a useful thing to know, if you plan to hold an event with class prizes. Here it is:

Category	No. of Players	Fraction
Master	1	.004
Candidate Master	10	.044
Category 1 (A)	24	.105
Category 2 (B)	37	.162
Category 3 (C)	62	.272
Category 4 (D)	62	.272
Category 5 (E)	21	.092
Category 6	11	.048

Bronstein vs N. N., Sochi 1950: 1 e4 e5 2 d4 exd4 3 Qxd4 Nc6 4 Qa4 Nf6 5 Nc3 d5 6 Bg5 dxe4 7 Nxe4 Qe7 8 O-O-O Qxe4 9 R-d8+ winning the Q, and presently the game.

MORE NEWS

In the quads played in Charleston June 13, Pat Hart won the top section with 3-0, and Edwin Tobias won the second with 2-0.

The Greenville Chess Club defeated the Asheville (NC) Chess Club by 6 to 3 on March 28 in Asheville. Later the same day Asheville defeated the Spartanburg CC (which was short several top players) by 5½-2½.

HOW TO CUT COSTS?

Chess is cheap, but it isn't free. Costs have a way of affecting how much chess we play, and what kind. Your Editor, who started out in the day of \$6 motel rooms, 2¢ postcards, and \$3.95 books, has become acutely aware of the changes since that time. I calculated, for example, that my son and I played in the State Championship at a cost of about \$14 per game, even though we shared a room. That's good, compared to the U. S. Open--even if you get the cut rate \$359 air fare, it will still cost about \$50 per day minimum for subsistence--at one game per day. There are drastic ways to cut costs--I once sat down at a Policy Board meeting at an Open only to have a player and his sleeping bag emerge from under the table--but for those of us who aren't quite that adventurous, here are some suggestions:

Share costs. Most cars will carry four or five as well as one. Several people in a motel room is cheaper than one per person--and at most tournaments, you won't see much of the room.

Hold your own tournament. Yes, it's work, but so is travel. Even if it costs your club money, you may well save. It's not hard to become a Tournament Director--we need more in the state. Talk with those who have done it and pick up some pointers, then try!

Consider postal play. A game will only take about 40 12¢ postcards, and in some tournaments you can play two games on a card. Even international play is attractive. You can play an international correspondence game for \$10-\$15; compare that to the cost of a trip abroad.

One day events. We have a lot of these, and they save on lodging costs. They are strenuous, but deservedly popular.

Finally, of course, encourage low entry fees. Big prizes once attracted many; low costs may now attract more. If you like low fees, attend tournaments that offer them!

THE EDITOR'S NOTES

"Now is the time--" Well, good men, if we are not to come to the aid of the SCCA, at least we need to decide what is to be done with it.

Our membership has dropped to the lowest point in years. We face a crisis this fall: members joining at last year's State Championship will be eligible to play this fall also because of the earlier date. We might find ourselves come December with only thirty or forty members; too few to support a magazine like this one, and too few to be a meaningful force in a state with several hundred active players.

This magazine is marginal now; we are running on the good graces of Benjy Hawthorne, our printer, and Bill Floyd's careful management of our subscription list. We determined at the tournament last year that we would do the best possible job in order to bring the members back. There has, however, not been any great rush to join.

What's to be done? It's up to you, the players and clubs of South Carolina. I can imagine several scenarios, such as--

We do nothing and muddle through somehow.

A brilliant Editor is found, and subscriptions come in from all 50 states and several foreign countries.

The major clubs of the state decide to support the SCCA and thenceforth require membership for all major tournaments.

The SCCA undertakes to hold a regular series of tournaments and thereby brings in members.

So what do you, as the surviving SCCA members, want? Talk it up among yourselves, and we'll be ready to make plans in Columbia.

On another subject altogether, let me express a personal prejudice of very long standing:

THE MEDIAN SYSTEM OF TIE BREAKING IS NO GOOD AT ALL.

I suspected this for years, and finally had it confirmed by a number of excellent statisticians including Arpad Elo of rating system fame. The USCF confirmed it by finally abandoning it in the most recent Official Rules. And we used it in our Championship last year! I was horrified, even though I won a tie-break for a trophy. Enough said.

Charleston Chess Club Championship

April, 8, 15, 22, 1981

TD- Patrick Hart

Assisted by Henry Cabaniss

1. Paul Tinkler	1875	W7	W8	W4	W2	4-0
2. Patrick Hart	1855	W12	W3	W5	L1	3-1
3. Edwin Tobias	1531	W11	L2	W10	W8	3-1
4. Lindsay Blanks	1885	W6	W5	L1	w/d	2-1
5. David Causey	1678	W9	L4	L2	W11	2-2
6. James Duchins	1511/17	L4	L9	W11	W10	2-2
7. George Weisbrod	1276	L1	L10	W12	W9	2-2
8. Al Veronee	1582	W10	L1	D9	L3	1½-2½
9. Joe Quinlan	UNR.	L5	W6	D8	L7	1½-2½
10. Johnny Simmons	UNR.	L8	W7	L3	L6	1-3
11. Eymard Willoughby	UNR.	L3	W12	L6	L5	1-3
12. Jon Brown	UNR.	L2	L11	L7	BYE	1-3

PALMETTO C.C. CHAMP/OPEN

PLAYER	PRE	POST	1	2	3	4	5	TOT
1. HENRY, JACK J	SC 1930	1939	W-9	W-8	D-4	W-5	D-2	4.0
2. ERM, DAVID	SC 1883	1888	W15	W13	D-5	W-6	D-1	4.0
3. HAINES, DAVID H	FL 1853	1839	W12	L-6	W-9	W11	W-7	4.0
4. HILL, JIMMY	SC 1805	1820	L-7	W16	D-1	W14	W-6	3.5
5. THORPE, TOM E	SC 1702	1719	W16	W-7	D-2	L-1	W11	3.5
6. FLOYD, WILLIAM B	SC 1597	1626	W14	W-3	W11	L-2	L-4	3.0
7. DAHLAN, ILHAMUDDIN	SC 1269/4	1501	W-4	L-5	W18	W-8	L-3	3.0
8. GENGEL, MAX G	SC 1680/12	1606	D13	L-1	W10	L-7	W12	2.5
9. FISHER, WADE F	SC 1568	1582	L-1	W15	L-3	W17	D10	2.5
10. MEAKIN, STEPHEN	SC 1338/4	1435	W17	L11	L-8	W16	D-9	2.5
11. HILLS, STONE L	SC 1541	1523	W18	W10	L-6	L-3	L-5	2.0
12. JACKSON, ANDREW A	SC 1319/8	1356	L-3	L14	W13	W15	L-8	2.0
13. SALZBERG, STEVEN	SC 1292/5	1326	D-8	L-2	L12	X--	D17	2.0
14. MC GINNESS, MANFRE	SC 1104/13	1200	L-6	W12	D15	L-4	D16	2.0
15. SLIMP, STEVE	SC 1532/8	1411	L-2	L-9	D14	L12	X--	1.5
16. LEVIE, LEWIS E	SC 1488	1395	L-5	L-4	W17	L10	D14	1.5
17. JONES, NELSON L	SC 1316/9	1304	L10	W18	L16	L-9	D13	1.5
18. KLINE, STANLEY	SC	999	L11	L17	L-7	F--	F--	.0

USC SATURDAY SWISS #1

PLAYER	PRE	POST	1	2	3	4	TOT
1. BERRY, JACK J	SC 1939	1989	W-7	W-8	W-3	W-2	4.0
2. ERM, DAVID	SC 1888	1909	W-6	W-4	W-8	L-1	3.0
3. ELIAS, JOSE HECTOR	SC 1985/5	1876	D-5	W-9	L-1	D-8	2.0
4. HILL, JIMMY	SC 1819	1816	W11	L-2	W-6	U--	2.0
5. FLOYD, WILLIAM B	SC 1626	1619	D-3	L-6	D-9	W10	2.0
6. FISHER, WADE F	SC 1592	1598	L-2	W-5	L-4	B--	2.0
7. SLIMP, STEVE	SC 1411/12	1487	L-1	W11	W10	U--	2.0
8. THORPE, TOM E	SC 1732	1740	W10	L-1	L-2	D-3	1.5
9. CASTON, W. FRANK	SC 1284	1296	B--	L-3	D-5	U--	1.5
10. DAHLAN, ILHAMUDDIN	SC 1501/9	1423	L-8	B--	L-7	L-5	1.0
11. LAWRENCE, PHILIP L	SC 1420	1415	L-4	L-7	B--	U--	1.0

COMPLETE RESULTS OF THE SPARTANBURG TOURNAMENTS

Spartanburg CC Open, April 25:

Section I: Richard Cohen 3-0, Jack Berry 2-1, Ernie DeGuzman and Claude Corbett each 1½-1½, Michael Callinan, Dennis Fish, Mickey Bush, and David Williams each 1-1.

Section II: Herbert Marshall 3-0, Ralph Hughes and Tom Thorpe each 1½-1½, Mark Cantrell, Wade Fisher, and Jeff Kishpaugh each 1½-1½, William Prince ½-2½, Bill Floyd 0-3.

Section III: Virgil Latham 2½-½, Sam Goodman, Orville Harris, Ross Klatte, and Joel DeGuzman each 2-1, JoJo DeGuzman 1-2, Frank Caston ½-2½, Jim Smith 0-3.

Section IV: Dean Jackson 3-0, John Anthony, James Lewis, and Gary Melton each 2-1, Chris Mulligan, David Collins, and Ronald Jernigan each 1-2, James Carlisle 0-3.

Spartanburg Supercyclone

Player	Results	1	2	3	4	5	6	7	T
1 Klaus Pohl		W6	W7	W2	W5	D8	W3	W9	6½
2 Jim Mottonen		W9	W3	L1	W4	D6	W11	W8	5½
3 Michael Williams		W17	L2	W13	D9	W12	L1	W11	4½
4 William Hammel		W19	D15	W8	L2	L11	W12	W10	4½
5 Mickey Bush		W18	D8	W15	L1	D9	D10	D6	4
6 Mark Cantrell		L1	W12	W16	W7	L2	L8	D5	4
7 David Williams		W14	L1	W11	L6	W15	L9	W18	4
8 Ernie DeGuzman		W13	D5	L4	W15	D1	W6	L2	4
9 Wade Fisher		L2	W14	W10	D3	D5	W7	L1	4
10 Bill Adickes		D12	D11	L9	W18	W14	D5	L4	3½
11 Joel DeGuzman		Bye	D10	L7	W13	W4	L2	L3	3½
12 Matt Dorn		D10	L6	W19	Bye	L3	L4	W17	3½
13 Douglas Winston		L8	W18	L3	L11	W17	L15	W20	3
14 Orville Harris		L7	L9	Bye	L17	L10	W18	W15	3
15 Neal Harris		W16	D4	L5	L8	L7	W13	L14	2½
16 Jeff Kishpaugh		L15	W17	L6	W19	-----	-----	-----	2
17 Dean Jackson		L3	L16	L18	W14	L13	W20	L12	2
18 JoJo DeGuzman		L5	L13	W17	L10	D20	L14	L7	1½
19 Herbert Horton		L4	Bye	L12	L16	-----	-----	-----	1
20 Paul Orr		-----	-----	-----	-----	D18	L17	L13	½

1981 Summer Quads

#1: Charles Waltman and Jim Smith 2½-½, Ross Klatte 1-2, Emmaneul Seko 0-3.

#2: John Anthony 3-0, Ronald Jernigan 2-1, Stan Yun 1-2, James Carlisle 0-3.

#3: Spencer Mathews 2½-½, Leland Fuerstman 1-1, James Smith 1-2, Anwar Ahmadi 1-1½.

Karlstrom-Simmens, Sweden 1967: 1 e4 c5 2 Bc4 e6 3 Nc3 Nc6 4 Nf3 a6 5 d4 cxd4 6 Nxd4 Qc7 7 Nxc6 Qxc6 8 Qe2 b5 9 Bd5! Resigns.

SOUTH CAROLINA'S HIGHEST RATED PLAYERS

Compiled for SCCA News by Don Lemaster.

NAME	RATING	NAME	RATING
POHL, KLAUS A.	2291 M	CAMERON, RENEE	1680 X
GRAHAM, CURTIS ADR.	2185 M	SEKO, EMMANUEL V.	1675/8
DE GUZMAN, ERNESTO	2116 C	DEXTER, JEFF	1665/4
LANPHEAR, CRANDALL	2099/17	GRAHAM, ERIC	1658 X
HYDER, M. LEE	2085 C	MILLER, JR. FRED G.	1657 X
WILLIAMS, WAYNE GO.	2081/19	WILLIAMS, JIM	1653 X
ZEIMETZ, JOSEPH	2050 C	ELLIOTT, MATTHEW E.	1648/16
FERGUSON, RANDAL G.	2043 C	HUGHES, RALPH	1648 X
BERRY, JACK J.	2024 C	CORBETT, JOSEPH S.	1647 X
HOLLOWAY, WILLIAM	2022/18	CARTER, RALPH E.	1640 X
SMELTZER, JEFFERY	2022 C	BLANTON, HARUE	1634 X
COHEN, RICHARD	1978 E	WARD, MARTIN L.	1608/15
WILSON, J. FRED	1976 E	WEAVER, III MARVIN	1607 X
WILSON, SCOTT G.	1976 C	GERGEL, MAX G.	1606/17
TINKLER, PAUL E.	1922 E	FISHER, WADE F.	1606 X
HART, PATRICK D.	1917 E	ALLEN, THOMAS L.	1603 X
ERB, DAVID	1916 E	PERKINS, SAM L.	1599/5
MCDOWELL, WALTER	1910 E	FLOYD, WILLIAM B.	1599 X
BRAUN, CHARLES E.	1905 E	SMITH, VIRGIL	1596 A
MCCAULEY, EDWARD	1898 E	WESTBROOK, LEE A.	1593 A
MATHEWS, JR. SPENCE	1890 E	SMITH, ROBERT M.	1592 X
YARID, DON	1886 E	BLAND, JR. WILLIAM	1586 X
HUDSON, PETER G.	1886 E	HANTHORNE, BENJY	1581 A
ELIAS, JOSE HECTOR	1876/9	MARTIN, DE NICOLAS	1579 A
BLANKS, LINDSAY E.	1863 E	ROBERTS, LEROY E.	1578/5
HAIMES, DAVID M.	1852 E	WALTERS, BILLY R.	1574 A
BUSH, JR. HAROLD M.	1851 E	MAHAFFEY, MARTIN M.	1571 A
HUTCHINSON, DAVID Q.	1847 E	VERONEE, JR. ALVIN	1571 A
PURVIS, LEE D.	1844 E	BROWN, SYLVESTER N.	1568/17
JACKSON, PHILLIP F.	1841 E	NORMAN, ROBERT E.	1567/8
FISH, DENNIS L.	1829 E	BRYANT, RALPH G.	1564 A
WILLIAMS, DAVID KN.	1817 E	HALON, JAMES D.	1564 A
SCHENKEL, MARIO	1816 E	TOBIAS, EDWIN JAMES	1561 A
HILL, JIMMY	1816 E	ISEMAN, DAVID	1555/4
KEEPLER, MANUEL	1802 E	GUIDO, JOHN	1552 A
CORBETT, III CLAUDE	1782 X	GOODMAN, J.S.	1549/15
PERRY, LEVIS H.	1776 E	SHOEMAKER, WILLIAM	1549 A
CONDE, ROMEO M.	1770 X	HWANG, IRVING	1548 A
REED, WINSTON D.	1765 X	DANGERFIELD, JR. H.	1545/16
CLARK, STEPHEN	1760 X	CABANISS, HENRY H.	1539 A
MARTIN, RALPH GREGG	1755 X	WELLS, JAMES S.	1534/11
KING, JIMMY	1744 X	GREENE, JR. NASH	1534 A
THORPE, TOM E.	1738 X	SEVERANCE, KEVIN	1532 A
CAUSEY, DAVID Y.	1720 X	SMITH, L HUGH	1530/11
HYATT, JAMES C.	1711 X	DUCHINS, JAMES	1527 A
RYAN, JOHN P.	1708/4	MILLS, STOBIE	1518 A
HUGHEY, JAMES E.	1706 X	BEALE, JAMES E.	1514/12
GRAHAM, JEFF	1704 X	HARLOCK, DONALD P.	1510 A
CANTRELL, ALBERT M.	1702 X	DOUGEN, WILLIAM H.	1509 A
MARTIN, STEVE	1697 X	RHODES, BAXTER E.	1507/4
MAHAFFEY, MARION E.	1695 X	DE GUZMAN, JOEL	1497 A
KOENIG, JAY N.	1694/4	HARRIS, ORVILLE B.	1494 A
LEMASTER, DON	1684 X	SLIMP, STEVE	1487/15
VAN HALL, RICHARD	1684 X	PRICE, EDWARD C.	1483 A
MULL, GENE	1683 X	PENDLETON, ANDREW	1482 A
PETERS, MARK	1680/4	SPEARMAN, LEWIS C.	1475 A

MORE RATINGS

NAME	RATING	NAME	RATING
CHARALAMBOUS, CHAR.	1471/4	GILLISON, NATHAN R.	1294/9
GUEST, JAY A.	1470 A	CARLTON, ROBERT	1290/4
ERVIN, KENNETH B.	1469/10	STRICKLAND, ROBERT	1290/12
CREWZ, DANIEL B.	1468 A	WINGO, VERNON	1278/5
CANITZ, JAMES A.	1467 A	SIMMONS, JOHNNY A.	1278/4
BRYANT, WESLEY	1465 A	NIMS, BRUCE G.	1273/9
OLMSTED, FREDERICK	1464 A	GRAVES, MICHAEL	1272/4
LEMMONS, ARTHUR M.	1460/9	STAFFORD, BILL	1270/4
VEGA, ARBIE	1453/16	WILLOUGHBY, EYMARD	1270/4
ANDERSON, PETER F.	1453 A	HITCH, ROBERT	1268/11
NICOLET, GALE A.	1451 A	DISHER, GEORGE	1264/4
EDGE, RONNIE EDWIN	1449/4	WILSON, KIMBERLY E.	1261 I
PRINCE, WILLIAM T.	1449/16	WESTER, PAUL D.	1259 I
MATHEWS, BLAIK	1447/4	COMBS, REGINALD R.	1254/13
DE GUZMAN, ERNESTO	1432 A	JOHNSON, JESSE R.	1254 I
KLATTE, ROSS A.	1431/8	KNIGHT, TOMMY	1254 I
BUSSER, WAYNE A.	1429 A	LOWERY, ERNEST	1247 I
DAHLAN, ILHAMMUDIN	1423/12	RENAU, DAVID	1244/8
LATHAM, VIRGIL H.	1422 A	KARNECKIS, FRANK J.	1240/10
LAWRENCE, PHILLIP L.	1415 A	COLEMAN, ROBERT	1237/5
TURNER, JERRY N.	1413 A	SAXTON, RICKY	1227/4
WEBB, TYRONE	1408/5	WILLIAMS, JR. DANIEL	1225 I
AMATO, CHARLES T.	1398 I	RENAU, DAVID	1212/5
BECK, CHARLES J.	1396 I	TURNER, CHRIS ANTH.	1206 I
LEWIS, LEROY E	1395 I	HAMRICK, GARRISON	1204/7
ROSEHUND, STANLEY	1394/11	BOOKTER, JERRY D.	1204/5
MARTIN, PEDRO	1388/6	WALKER, D. DOUGLAS	1204/4
BLACKSTONE, RIP	1388/12	MCGINNIS, MANFRED	1200/18
MONROE, DAVID H.	1386 I	RUTLEDGE, RONALD W.	1193 N
STUCKER, RICHARD O.	1381 I	DOWELL, MIKE	1190/7
MATOS, LUIS A.	1378 A	CARLISLE, JAMES H.	1190 N
SALZBERG, STEVEN	1377/10	PIERCE, BOBBY D.	1188/9
FITCH, STEPHEN D.	1372/4	LYNCH, JAMES R.	1186/9
HEARON, STEPHEN	1366/11	COLLIER, MD WESLEY	1186/6
ARLEDGE, BERNARD	1364/15	TYLER, RUBEN	1185/5
RATTZ, JOE	1360/9	JOHNSON, MIKE	1169/4
AUTRY, MELVIN D	1357/10	HUDGENS, NOLAN	1169/15
JACKSON, ANDREW A.	1356/13	TICHENOR, CLARENCE	1168 N
HOPKINS, JR. FRED T.	1351 I	TANGUAY, BRIAN E.	1167/16
LOWDER, RANDY J.	1349 I	TAYLOR, RICHARD AL.	1156/11
WILSON, GARY	1344/4	HYDER, ROBERT L.	1141/9
ADCOCK, J. DAVID	1343/6	COTTL, TIMOTHY L.	1114/16
SMITH, GENE	1342/15	MULLIGAN, CHRIS T.	1099/7
MANDRA, DOUG	1339/16	LIPE, FREDERICK D.	1084/10
BOYD, DAVID	1337/4	O'DELL, MICHAEL N.	1072/5
SMITH, JAMES M.	1336 I	WILSON, MEREDITH A	1062/7
KING, KEVIN M.	1325 I	HORTON, DONALD C.	1050 N
HALE, ERIC GREGG	1324 I	ROSS, MARVIN S.	1034/7
CICORA, MICHELE J.	1321 I	BERRY, SCOTT	1028 N
ANTHONY, JOHN C.	1318 I	WATSON, GEORGE M.	0987/5
JERNIGAN, RONALD L.	1314/11	HAMRICK, GINGER S	0970/4
WEISBROD, GEORGE J.	1311 I	WHEELER, JAY	0937/11
ITIN, JERRY	1310 I	ORR, SHERRY L.	0934/8
MILLER, GEORGE W.	1305/18	RICHARDSON, BUDDY	0932/4
JONES, NELSON L.	1304/14	MAHAFFEY, JOYCE G.	0921/9
CASTON, W. FRANK	1297 I	IVANKOVICH, DANIEL	0915/12
		WILSON, JOHN B.	0823/4
		JACKSON, BILLY R.	0799/4
		WHITE, JOHN D.	0798/4
		ELMS, GARY	0763/4

Grand Prix

TO THE EDITOR:

To all those interested in playing in a first-class chess tournament this summer, the Charleston Chess Club announces that it will sponsor such a tournament on August 22 and 23 of 1981. There will be a \$400.00 guaranteed prize fund and five grand prix points will be available. The tournament will take place at the North Charleston City Hall. This setting is a vast improvement over the sites of our previous tournaments. We would like to make this an annual event and hope to attract players from a large area. The Charleston Chess Club would appreciate the support of all members of the South Carolina Chess Association in our attempt to make this a first-class annual event. The details of the tournament will be published both in this newsletter and in Chess Life.

See you in Charleston!



DETAILS OF THIS IMPORTANT EVENT:

THE CHARLESTON CLASSIC: August 22-23, 1981. North Charleston City Hall on Mall Dr. (I-26 and Montague), Room 517. \$400 Guaranteed Prize Fund-5 Grand Prix points. 1st:\$150 2nd:\$100 3rd:\$50 B:\$25 C:\$25 D:\$25 E/Unr:\$25 (More \$\$ per entries)
5-SS, 50/2 Rds. 9-2-7, 9-3. Reg.: 8:00-8:50 am.
EF: \$15 if received by 8/15/81; \$20 at door; Free to players rated 2200 and above. Entries: Charleston Chess Club, PO Box 634, Sullivan's Island, SC 29482
Checks payable to Charleston Chess Club. Limited smoking.

OTHER COMING EVENTS AROUND THE STATE

July 18, Columbia (see insert)

August 15, Spartanburg: Two events at USC-Spartanburg, I-585 at I-85.

USCS CHESS CLOCK SPECIAL: 3-Series, Time 40/80. EF\$5, \$4 for juniors if received by 8/12, \$1 more at site. Chess clock to first in each 8-man section; free chess decal to all entrants. Reg. 9-9:45, Rds. 10, 1:30, 5. NS Advance entries to David K. Williams, 109 Applewood Ln., Spartanburg, SC 29302 Ph. (803) 573-9861.

UNRATED BEGINNERS' TOURNAMENT

Site and registration time as above. 4-SS, Time 40/60, EF \$3, \$1 Jrs. Open to non-USCF members and USCF members who are unrated or rated under 1200. USCF membership awarded to non-members who score 3 or more points. Trophies to top 2; free chess decal to all players. Rounds begin at 10 am. NS.

Both events sponsored by the USCS and Spartanburg CC's.

North Augusta, August 29

Three round Swiss or quads at North Augusta Recreation Center, Buena Vista Ave. For details contact Bill Dodgen, 2008 Robin Rd., North Augusta SC 29841, Ph. (803) 279-6881.

August 22-23 Charleston: Charleston Classic: See p. 14.

State Warmup Tournaments, Columbia

September 5

September 13

September 19

For each: 3-SS, Time 40/60, at USC Russell House, Rm. 327. (Russell House faces Green St., a few blocks from Assembly.) EF \$6 if received by the Wednesday before the tournament; \$2 more at the site. Register 8:30 to 9:15 at site, Rounds 9:30, 12:30, 3:30. Prizes (based on 20) \$50-30, plus \$15 for top under 1400-unrated. Advance entries to Don Lemaster, 1471 Pine St., West Columbia 29169.

July 25, Charlotte, NC: Grayson July Sectional.

3-SS in 8 man sections at Grayson Community Center, 750 Beal St. Time 40/90. EF \$5, Priz \$35 to first each sect. Reg. 9:00-9:40, Rds 9:45, 1:30, 5. Entries to Marvin S. Chappell, Jr., 92 Shady Oak Trail, Charlotte 28210. For info at center call (704) 365-1265.

SCCA NEWS is published by the South Carolina Chess Association, a non-profit organization of chess players and persons interested in chess in South Carolina. The SCCA seeks to encourage and foster the playing of chess within the state. It is the recognized state affiliate of the U. S. Chess Federation for South Carolina.

Any person is eligible to become a member through payment of annual dues to the Secretary. Regular dues are \$6; Junior dues for persons 18 years of age and younger are \$3. A person may become a Patron member by payment of \$10.

SCCA NEWS is edited by Lee Hydar, 33 Longwood Dr., Aiken, SC 29801. It is printed at the Bagpipe Press, Hedges, S. C.

1980 Officers of the SCCA are as follows:

President: Philip F. Jackson, 2630 Cooper Ave., Columbia, SC 29205

Vice-President: Paul A. Finkler, 1716 Pearlott St., Charleston, SC 29407

Secretary: William B. Floyd, 4315 Devereaux Rd., Columbia SC 29205

Treasurer: Marion E. Mahaffey, 1207 Memorial Park Rd., Lancaster, SC 29720

FIRST CLASS MAIL

SCCA NEWS
4315 Devereaux Rd.
Columbia, SC 29205