

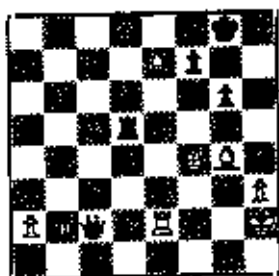
SCCA NEWS

V. xvi No. 1 Jan '82



Smeltzer

Wings!



34..... Qre2

THIS ISSUE'S COVER: Calligraphy by E. J. HYDER

CONTENTS OF THIS ISSUE:

S. C. Championship: 3
News: 4, 8, 17
SCCA Business: 5, 6
Our New President and His Message: 6, 7
Games: 9-13
Cross-Tables: 13, 18-21
Magazine Survey Results: 14
Ratings: 15, 16
Membership Survey: 17
Book Reviews: 22
Coming Events: 23

THE EDITOR'S NOTES

We held this issue up a little so as to get more material in, and thus achieved the largest issue yet. Actually, we held it up a little longer than planned, due to the many events of the Christmas holidays. Next issue will be in about three months, and we will try to keep to a quarterly schedule.

Please note the coming events on the inside back cover, and especially the Snowstorm Special in Charleston, a Grand Prix event. The site was used for the summer tournament in Charleston, and it's excellent and convenient; several motels are nearby, and a big mall is right across the street. It's easy to reach by I-26. The playing rooms are spacious and comfortable. We hope many of you will make it there.

There is a regular schedule of events in other parts of the state, too. Spartanburg, Lancaster, and Columbia remain quite active. Those of you living in other towns should plan some weekend events, too; it's fun. We hope to have an Aiken event to announce in our next issue.

We are still looking for contributions of all kinds to the magazine: articles, games, art, whatever. Don't be shy--send them in.

Finally, a Happy New Year to all, from the Editor and all the Officers.

Smeltzer is Champion!

Jeff Smeltzer of Greenville won the 1981 South Carolina Championship outright by scoring $4\frac{1}{2}$ - $\frac{1}{2}$ in the annual tournament in Columbia. One of the state's leading players for many years, Smeltzer had previously tied for the title in 1973 and 1975. In this year's event he swept by Marvin Weaver, Lindsay Blanks, Jose Hector Elias, and Lee Hyder before clinching the title with a draw against Jack Berry in the final round.

Last year's champion Klaus Pohl suffered a loss to Lee Purvis in the first round and had to battle back to finish in a tie with Berry at 4-1. Berry also suffered at the hands of Purvis, yielding a draw to him in the second round. Purvis in turn was knocked from contention by Wayne Williams, who tied with Paul Tinkler at $3\frac{1}{2}$ - $1\frac{1}{2}$.

In the Reserve and Amateur Sections winners were Clarence Tichenor and Claude Corbett, III, respectively. Corbett was the highest rated player in his section and he led all the way to a $4\frac{1}{2}$ - $\frac{1}{2}$ score, earning promotion to a new class by gaining 42 rating points. Looks like he'll be in the Championship Section next year! Tichenor's 5-0 result in the bottom section earned him no fewer than 199 rating points along with the trophy. He defeated Jimmy Baker, the top rated player, in the first game, and never looked back. Baker came back to score 4-0. David Causey scored 4-1 in the Amateur to finish right behind Corbett.

Our new State Champion, Smeltzer, is a resident of the small community of Tigerville north of Greenville. He is a mechanical drafter with the Daniel Engineering Co. of Greenville. He reports that he has been playing chess since 1963, progressing from Category V to his present rating of 2093. In addition to his State Championships, he scored a second place finish in the 1976 U. S. Amateur Tournament in Atlanta. Jeff and his wife Paula were anticipating the birth of their first child in late November; perhaps that provided some extra inspiration!

A total of 56 players participated in the three sections of the State Championships. Don Lemaster did his usual smooth job of directing a tournament that seemed to have no disputes or difficulties at all. Perhaps the pleasant surroundings of the Seibels-Bruce Building were a peaceful influence.

NEWS FROM COLUMBIA

State Warmup #1, Sept. 5. Tom Thorpe went 3-0 to win this ten player event. Wade Fisher, D. Leggett, and Patricia O'Connor tied for 2nd-4th places with 2-1.

State Warmup #2, Sept. 13. Jimmy Hill scored an undefeated 3-0 to win the twelve player event. Tom Thorpe was second with $2\frac{1}{2}$ - $\frac{1}{2}$, followed closely by Wade Fisher, Bob Smith, and Bill Floyd with 2-1 each.

State Warmup #3, September 19. Jack Berry went 3-0 to win this event, followed closely by Jimmy Hill with a $2\frac{1}{2}$ - $\frac{1}{2}$ score, and Lee Purvis, Wade Fisher, and Cliff Hyatt with 2-1 scores. Twelve players participated.

Finehurst Swiss #4, October 11. Jimmy Hill won with a $3\frac{1}{2}$ - $\frac{1}{2}$ score. New SCCA President Bill Floyd finished second with a score of 3-1. Third and fourth places went to Cliff Hyatt and Andy Jackson with 2-2 each in the 9 player event.

5th Annual Halloween Classic, October 31. Jimmy Hill added another tournament to his collection by winning this 11 player event with a score of $2\frac{1}{2}$ - $\frac{1}{2}$. Following close behind and sharing second-fourth places were Cliff Hyatt, Ralph Cade, and Matthew Robinson with 2-1 each.

Gamecock Gambit II, November 14. David Erb and Cliff Hyatt each scored $3\frac{1}{2}$ - $\frac{1}{2}$ to tie for first and second places. Jack Berry, Tom Thorpe, Bill Floyd, and Doug McCoy were all close behind the leaders with 3-1 scores. 21 players participated.

Our thanks to Don Lemaster, who directed all these events, for these reports and the crosstables elsewhere in this issue

FROM CHARLESTON

In a pair of quads held November 7 Patrick Hart and Frederick Weatherson won prizes of a year's USCF membership each by winning the two sections. Hart scored 2-1 ahead of Lindsay Blanks and David Causey with $1\frac{1}{2}$ - $1\frac{1}{2}$ each and Robert Moorer who was 1-2. Weatherson's $1\frac{1}{2}$ - $\frac{1}{2}$ beat out Dennis Salwierz (1-1) and Phil Lawrence (2 - $1\frac{1}{2}$). Hart and Henry Cabaniss directed.

FROM SPARTANBURG

Three teams participated in the Piedmont Team Championship. Columbia won with 9 points, ahead of Spartanburg I with $5\frac{1}{2}$ and Spartanburg II with $2\frac{1}{2}$. Jack Berry's 3-0 and Don Lemaster's $2\frac{1}{2}$ - $\frac{1}{2}$ led all the players. Crosstables are elsewhere in this issue. David Williams notes that all 12 players received a trophy!

David Williams scored $2\frac{1}{2}$ - $\frac{1}{2}$ to win the 4-player "Prince Henry Memorial". Mickey Bush was second with 2-1. (Prince Henry of Prussia, reports Williams, turned down the offer of the Continental Congress to become America's king.)

MINUTES OF THE ANNUAL SCCA BUSINESS MEETING

A quorum being present, the annual business meeting of the South Carolina Chess Association was called to order at 2:40 p. m. on Sept. 26 at the Seibels-Bruce Building in Columbia. Treasurer Mahaffey gave his report (printed following these minutes) which was accepted by the membership.

Secretary Floyd reported on membership stating that, for the first time in seven years, the membership had grown during the year. After the last championship, we had 59 members. Currently we have 86.

The following motions from the floor were presented, discussed, and passed by voice vote with no negative votes, as amendments to the By-Laws:

1. Bids shall be solicited to hold a South Carolina Open Championship on an annual basis.
2. Bids shall be solicited to hold the South Carolina Closed Championship, on an annual basis.
3. The prize to the winner of the annual Closed Championship shall include a free, non-transferable, entry for the following Closed Championship, said prize to be split as a reduction of the entry fee among the co-winners, should two or more players share the title.
4. Tournaments requiring State membership will be advertised free in SCCA News. Other tournaments will require a \$3.00 ad fee, to be submitted with the ad.

The following officers were nominated and elected, without opposition, to serve until the next annual business meeting:

President--Bill Floyd, Columbia
Vice-President--Paul Tinkler, Charleston
Secretary--Don Lemaster, Columbia
Treasurer--Marion Mahaffey, Lancaster

Lee Hyder will continue to serve as Editor, at the wishes of the membership and the officers. He was justifiably commended by the membership for a job well done.

The meeting was turned over to the new President, and shortly thereafter adjourned.

Wm. Floyd, Secretary

TREASURER'S REPORT

Cash on Hand November 14:	\$348.77
Net income from 1980 Championship (Dues and fees)	131.91
Cash on Hand after Championship (Continued)	480.68

TREASURER'S REPORT, CONTINUED

Expenses:

Printing (two issues)	\$97.59
Bank service charges	4.04
Postage stamps	15.00
Returned check	6.00
SCCA Championship	65.00

Income:

Dues	107.00
Cash on hand September 25, 1981	<u>\$400.05</u>

Marion Mahaffey, Treasurer.

Mr. Mahaffey noted additional income of \$263.18 at the 1981 State Championship, before numerous expenses. Printing bills for two issues of SCCA NEWS had not been rendered at that time.

OUR NEW PRESIDENT, BILL FLOYD

As noted above, Bill Floyd of Columbia was elected President of the SCCA at the 1981 annual Meeting after serving a term as Secretary. Bill is a native of Virginia and a graduate of Virginia Tech, where he first started playing chess. A Certified Public Accountant by profession, Bill is presently Chief Financial Officer of the S. C. Dept. of Mental Health. He was formerly Director of State Audits for the S. C. State Auditor's Office, and also spent eight years in commercial accounting firms. Bill is married and has three children; his 14-year-old son Tom is an active chessplayer also.

Bill notes that he discovered the Palmetto Chess Club in 1978 through a two-line community announcement in the Columbia Record. Over the last three years his rating has risen rapidly from 1188 to 1071. He remarks that his greatest successes have come with the black pieces--David Haines, Greg Martin, Cliff Hyatt, and Jan Svenson having lost to him with White. In addition, he has drawn Jack Berry, Hector Elias, Jimmy Hill, and Pat Hart with Black.

Bill is a certified Tournament Director and is Treasurer of the Palmetto Chess Club. His other hobbies include astronomy and tropical fish.

A MESSAGE FROM OUR NEW PRESIDENT -- BILL FLOYD

Dear Member/Potential Member:

The South Carolina Chess Association needs your support! As of December 31, 1981, almost half of our membership will expire. Please send your renewals to Don Lemaster (Address on back cover).

I also want to point out the special Patron membership for \$10 annually and urge all of you that can to elect this option.

Also, if each of us can recruit one additional member, we can double our membership. I know we had magazine problems in the past, but these are behind us, as this, the fifth consecutive timely issue shows--congratulations to Lee Hyder on a job well done!

There are a lot of good things happening in South Carolina Chess:

1 -- As I write this, I have just learned that our petition was successful and that SCETV will carry the rest of the Karpov-Korchnoi match on stations in Columbia, Greenville, and Charleston.

2 -- The Bethel Community Center in Columbia recently got front page color coverage of their "Chess Day Festival".

3 -- Clarence Tichenor of Columbia is teaching a special class for Richland School District II in chess for about 25 exceptional elementary students--a school near you might be interested in this--ASK!!

4 -- Ernie DeGuzman recently became a Master--congratulations! And we have several new experts in the state, including Randy Ferguson, Jack Berry, and David Erb of Columbia.

5 -- There have probably been more tournaments in SC this past year than in any two recent years combined.

6 -- The Palmetto Club has doubled its membership and more than doubled its attendance in the last year and a half. A good bit of this came through holding special meetings at shopping malls and playing games with the general public. Your malls will allow this too--just look them up in the phone book, call, and ask.

It continues to amaze me how many good chessplayers I meet who don't even know that there are any organized chess clubs in South Carolina. We need more publicity. If any of you have any ideas on this, please drop a note on them to me, Bill Floyd, at 4315 Devereaux Rd., Columbia, SC 29205.

DE GUZMAN WINS CHESS CLOCK SPECIAL

Our new master Ernie DeGuzman scored 3-0 to win the USCS Chess Clock special in Spartanburg on August 15. Remarkably, he threw in a 90-mile auto trip to Clinton to pick up his daughter between Rounds 1 and 2--and still kept winning. Thirty-seven players competed in the rated tournament, and ten more in an unrated Beginners' Tournament, making this one of the larger events in recent S. C. chess.

Ernie also won the Caucus III tournament in Charlotte August 22, winning over Klaus Pohl on the way to his victory in the tournament. In addition he was one of four players to tie for first in the North Carolina Open Championships with a 5-1 score.

Other South Carolinians also did well in the NC Championships. David Williams scored 3½-2½ to become top 1800 player, and JoJo DeGuzman was top 1400. Mark Cantrell's 5-1 score tied him for second in the Amateur Section.

CROSS-TABLES: PIEDMONT TEAM CHAMPIONSHIP

1	C	Jack Berry (2069)	W5	W9	W6	3-0
2	C	David Erb (2004)	L9	W6	D10	1½-1½
3	C	James Hyatt (1727)	W7	L11	W8	2-1
4	C	Don Lemaster (1708)	W11	W8	D12	2½-½
5	S2	Joel DeGuzman (1574)	L1	W10	--	1-1
6	S2	Sam Goodman (1547)	L10	L2	L1	0-3
7	S2	JoJo de Guzman (1454)	L3	L12	W11	1-2
8	S2	Jim Smith (1421)	D12	L4	L3	½-2½
9	S1	David Williams (1825)	W2	L1	--	1-1
10	S1	Mark Cantrell (1771)	W6	L5	D2	1½-1½
11	S1	Jeff Kishpaugh (1669)	L4	W3	L7	1-2
12	S1	Emmanuel Seko (1591)	D8	W7	D4	2-1

C=Columbia; S1=Spartanburg I; S2=Spartanburg II.

PINEHURST SWISS # 4

PLAYER	PRE		POST				TOT	
	ST	RTNG	RTNG	1	2	3		4
1 HILL, JIMMY	SC	1886	1885	W-4	D-2	W-3	W-5	3.5
2 FLOYD, WILLIAM B	SC	1611	1631	W-9	D-1	W-5	D-3	3.0
3 HYATT, JAMES C	SC	1678	1679	D-5	W-7	L-1	D-2	2.0
4 JACKSON, ANDREW A	SC	1353	1369	L-1	L-5	W-9	W-8	2.0
5 THOMPSON, LARRY S	SC	1265/9	1348	D-3	W-4	L-2	L-1	1.5
6 LEMASTER, DON	SC	1651	1654	U-0	U-0	W-8	U-0	1.0
7 GREENE, JR NASH	SC	1567	1560	W-8	L-3	U-0	U-0	1.0
8 O'CONNOR, PATRICIA	SC	1253	1246	L-7	W-9	L-6	L-4	1.0
9 BUFFINGTON, JOHN	SC	1157/5	1100	L-2	L-8	L-4	U-0	.0

The Decisive Game

The crucial game of the State Championship: Round 4, two players tied for first at 3-0--and a game to match the circumstances! Here it is, with annotations by winner Jeff Smeltzer, and a few notes by loser Lee Hyder. Hyder vs. Smeltzer, King's Indian Defense.

1 d4 Nf6 2 Nf3 g6 3 c4 Bg7 4 Nc3 O-O 5 g3 d6 6 Bg2 Nbd7
7 O-O e5 8 e4 c6 9 h3 Re8

Usual and better are 9--Qb6 or 9--Qa5.

(Also exd4 used to be played, and it has its points.

The whole line pretty much died in master play after it was discovered that Black could play Nc6 and if 7 d5 then Na5. LH)

10 Be3 a5 11 Qc2 exd4?

Black should try 11--Qe7. After the exchanges White takes advantage of the holes on Black's queenside.

12 Bxd4 Ne5 13 Nxe5

(I was tempted by those holes Jeff mentioned. However, 13 Nd2 looks strong in retrospect. The threat of f4 is strong, and it's awfully hard for Black to get counterplay. As played, White keeps some advantage, but it's hard to exploit. LH)

13--dxe5 14 Be3 Be6 15 Na4 b5

An attempt at active play that, however, allows the White knight to be strongly posted at d5. 15--Nd7 16 c5 leaves Black with a passive but solid position.

15 Rfd1 Qb8 17 cxb5 cxb5 18 Nb6 Ra6

If 18--Ra7 19 Qc6 b4 20 Nd5 Rb7 (20--Ra8 21 Nc7 Rc8 22 Qa8. Or 20--Bd5 21 exd7 Rc7 22 Qb6 and the d-pawn is too strong.) 21 Rac1+; if 21--Rc8 22 Qa6.

19 Nd5

+ . If 19 Qc6 b4.

19--Qb7 20 Kh2 Rc6 21 Qd2 b4 22 Bg5! Bd5

If 22--Bc8 23 Rac1 Rc1 (23--Rce6 24 Rc2 and Rdc1)

24 Rc1 Nxd5 25 exd5 e4 26 d6+

23 exd5 Rd6 24 Rac1 Rc8

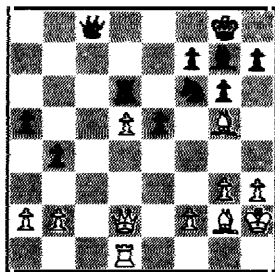
25 Rxc8 Qxc8 (diagram position)

26 f4(?)

allowing Black counterplay. I expected 26 Rc1 Qd7 (26--Qb7 27 Rc5 Qa6--if Qa8 28 Qc2, or if 27--Qa7 28 Qc2--27 Rc6) 27 Rc5 Qa7 28 Qc2 and White is winning.

(Analyzing independently, I decided that the strongest move here is 26 a3(!) leaving Black with a weak pawn any way he plays. LH)

(Continued next page)



HYDER VS. SMELTZER, CONTINUED

26--Nh5 27 Bf3

If 27 Be7 Rd7 28 d6 exf4 29 gxf4 Bf6 (29--Bf8 30 Bxf8 Kxf8 31 Qd4) and now: (a) 30 Rc1 Qb8 31 Bc6 Be7! 32 Bd7 Bd6 with advantage to Black; (b) 30 Bf6 Nf6; Black's strong bishop is exchanged off, but now the d-pawn becomes weak, e. g., 31 Qd4 Ne8 32 Qb6 Qd8 33 Qd8 Rd8 34 d7 Nf6 35 Bc6 Kf8.

27--exf4 28 gxf4

28 Bxf4 Nxf4 29 Qxf4 Rf6 30 Qe3 Bf8 31 Bg2 (or b3) Bd6, and Black appears to have just enough counter-play.

28--Qf5 29 Re1?

29 Be7 Nf4 30 Bg4 (30 Bd6 Qh6 31 Kg1 Bd4+ and Black wins.) Qe5 (30--Qd5 31 Bd6) 31 Bd6 Qd6 32 Kh1 (32 Rf1 Qd5! is unclear) h5 33 Bf3 Nh3 is unclear, e. g. 34 Rc1 Qg3. However, after 29 Bxh5 gxh5 30 Be7 Rg6 31 d6 Bh6 (31--Be5 32 Rf1!) 32 Rf1 Qd7 White should win.

(I had planned this line, but couldn't see far enough into it, and didn't want to give up the B until I had to. It was a bad choice. LH)

29--h6 30 Be7 Nf4 31 Bg4

After 31 Bd6 Qh3+ 32 Kg1 Bd4+ (32--Qg3+ 33 Bg2 Bd4+ 34 Kf1) 33 Qd4 Qg3+ 34 Kf1 Qf3+ 35 Qf2 Qd3+ 36 Re2 Qh3+ 37 Kg1 Qg4+--draw.

31--Rd5

Finally the d-pawn falls, but it costs a piece.

32 Qc1 Qd3 33 Qf4 Qc2+ 34 Re2??

The king must move back. One possible line is 34 Kh1 h5 35 Bf3 Rf5 36 Qe3 (36 Qb8+ Kh7 37 Bg2 Rf2) Qb2.

Black's active pieces and three pawns for the bishop indicate a balanced position. (I rather like it for Black! LH) After the text, Black wins with a striking geometrical combination.

34--Qxe2+! 35 Be2 Be5

(Black found this while in serious time pressure. The point is that the R forks the B's.)

36 Kg3 g5! White resigns.

GAMES Edited by C. E. Braun

More games from the State Championship:

Ed McCauley vs Paul Finkler, Benoni

1 d4 Nf6 2 c4 c5 3 d5 b5 (The Benko Gambit) 4 cxb5 a6
This shows that Black is serious about giving up the P.
The alternative is 4--e6 5 Nc3 Bb7 6e4!
5 Nc3

White normally accepts the p with 5 bxa6 e6 6 Nc3 exd5 7 Nxd5 Nxd5 8 Qxd5 Nc6 9 e3 Be7 10 Bc4 O-O 11 Nf3 with a small edge. (Continued overleaf)

GAMES, CONTINUED (McCauley vs. Tinkler)

5--d6

More thematic is 5--e6 6 e3 axb5 7 Bxb5 Qa5, but then White has 8 dxe6! fxe6 9 Qb3 Bb7 (or 9--Qb6 10 e4!+) 10 Bd7+ Nbd7 11 Qb7 Rb8 12 Qc6! Rb6 13 Qa4 with advantage.

6 e4 g6 7 Nf3 Nbd7 8 Qa4 Qb6 9 Bc4 Bb7 10 O-O Bg7 11 e5!

Striking while the Black K is still in the center.

11-- ab 12 Qb5 Qb5 13 Nb5! Nd5 14 Bd5 resigns.

D. Williams vs. Klaus Pohl, Round 2; English.

1 P-QB4 N-KB3 2 N-QB3 P-KN3 3 P-KN3 B-N2 4 B-N2 O-O 5 P-K4 N-QB3 6 KN-K2

This two-edged opening is not advisable against a much stronger opponent, but having already begun, White ought to play 6 P-Q4 and try to take advantage of the extra space.

6--P-Q3 7 O-O P-K4 8 P-Q3 P-KR3 9 P-KR3 B-Q2 10 B-K3 N-K2 11 Q-Q2 K-R2 12 N-Q5 N/3xN 13 BPxN P-QB3 14 Pxp Bxp 15 P-Q4 P-Q4!

Black is willing to open the game because his bishops are better placed.

16 KPxp Nxp 17 Pxp NxB 18 QxN BxB 19 KxB Q-Q4+ 20 Q-B3 QxQ+ 21 KxQ Bxp 22 QR-Q1 KR-Q1 23 P-QN3

23 N-B3 is better. Now the bishop is much stronger.

23--K-N2 24 N-B4 QR-QB1

Even in the ending, Black mounts a fearsome attack.

25 N-Q3 R-B6 26 K-K2 B-B2 27 P-B4 B-Q4 28 P-QN4 R-B7+ 29 K-B3 B-N3 30 P-QR4 R-B6 31 K-K2

White is tied in a knot.

31--R-K1+ 32 K-Q2 R-QR6 33 P-R5 B-Q5 34 R-B3 B-B6+ 35 K-B1 R-K7 36 P-R4 R-R8 mate.

John Ryan vs. Pat Hart, Round 1; Sicilian.

1 P-K4 P-QB4 2 N-KB3 P-Q3 3 P-Q4 Pxp 4 Nxp N-KB3 5 N-QB3 P-KN3 6 B-QB4 B-N2 7 B-KN5 Q-R4

Simply 7--O-O is good. Now White gains a tempo.

8 B-Q2 Q-Q1 9 Q-K2 O-O 10 O-O-O N-QB3 11 NxN PxN 12 P-K5! N-Q2 13 P-K6 N-K4 14 Pxp+ K-R1 15 B-KN5 P-Q4 16 B-QN3 Rxp 17 P-KR4 Q-R4

This maneuver doesn't work any better here than it did on move 7.

18 P-KB3 P-KR3 19 P-R5 K-R2 20 Pxp+ Kxp 21 B-Q2 B-QR3?

Black must run, not walk, to the king's defense.

22 Q-B2 N-B5? 23 Q-N3+ K-R2 24 BxRP BxB 25 RxB+ KxR 26 R-R1 mate

Bill Floyd vs. B. Corbett, Amateur Section, Rd. 1.

Two knights' Defense.

1 P-K4 P-K4 2 N-KB3 N-QB3 3 B-B4 N-B3 4 N-N5 P-Q4 5 Pxp N-QR4 6 B-N5+ P-B3 7 Pxp Pxp 8 B-R4

Much better is 8 B-K2 P-KR3 9 N-KB3 P-K5 10 N-K5 B-Q3 11 P-KB4 Pxp 12 NxP/3 O-O 13 O-O. Black has the play; White has the pawn. White can also play 8 Q-B3

(Continued next page)

GAMES, CONTINUED

(Floyd-Corbett)

- when Black should play 8--R-QN1 9 B-Q3 P-KR4 10 N-K4
 N-Q4 11 N-N3 P-N3 12 O-O B-N2 13 N-B3 O-O 14 B-K2
 R-N5, again with play for a pawn.
 8--P-KR3 9 N/5-B3 P-K5 10 O-O?!
- Intimidates Black, but 10 Q-K2 B-K3 11 N-K5 Q-Q5!
 12 BxP+ NxB 13 Q-N5 B-QB4! 14 QxN+ K-K2 15 Q-N7+ K-Q3!
 16 P-KB4 PxBep 17 NxB/3 Q-B7+ 18 K-Q1 QxNP 19 R-K1 B-KN5
 should win for Black. After the text, Black should be
 able to take the knight and hang on, but he plays con-
 servatively.
- 10--B-Q2 11 R-K1 B-K2 12 N-K5 O-O 13 P-QR3 B-Q3 14 NxB
 QxN 15 N-B3 Q-B4 16 P-Q4?
- White needs to get some air, but 16 Q-K2 or 16 P-KR3
 were necessary.
- 16--BxP+ 17 KxB B-N5+ 18 K-N3
 Or 18 K-N1 QxP+ 19 K-R1 Q-R5+ 20 K-N1 Q-R7+ 21 K-B1
 Q-R8+ 22 K-K2 QxP mate
 18--QxP+ 19 KxN QxP+ 20 K-R4 Q-R7+ 21 K-N4 P-B4 mate.

Some time ago we had an Annotation Contest. Andy Jackson of Columbia was the only one to enter, submitting annotations to the game Kovachevich-Rey, Maribor, 1980. We print below Jackson's notes and some provided by Lee Hyder. Hyder's notes are in parentheses.

- 1 P-Q4 N-KB3 2 N-KB3 P-Q4 3 B-B4 P-K3 4 QN-Q2 P-B4 5 P-K3
 B-K2 6 P-B3 O-O

Black has castled too soon, and in the direct line of fire. Note how all of White's forces are straining toward the right. ("Uncle Bob" Scrivener, the late grand old man of Memphis chess, used to call this the "Businessman's Opening"; he could play it without ever having to study the openings. Black has indeed played passively, missing the chance to develop his QB on move 3, or to join the fight for the e5 square with 5--B-B3.)

- 7 B-Q3 N-Q2 8 P-KR4 P-QN3

Black should be concentrating on his beleaguered king side. 8--N-N5 followed by 9 B-N5 P-B3 would halt the onslaught and give the initiative to Black. (Alas, afraid not. 8--N-N5 9 BxP+ KxB 10 N-N5+ BxN 11 PxB+ N-R3 12 PxB wins a pawn.)

- 9 K-K5 NxB?

(White has telegraphed his intentions liberally, and this is walking right into the lion's jaws. Black must be consistent and play 9--B-N2 so that his KN can reach K5 when necessary.)

- 10 PxB N-Q2 11 BxP+

Now it begins. (As evidence of how strong White's game is, examine 11 Q-R5 or 11 Q-B2 or 11 P-K4, all.)

- 11--KxB 12 Q-R5+ K-N1 13 N-B3 P-B3

Too little too late. 13--P-KN3 would at least drive

ANNOTATION CONTEST, CONTINUED

- the Q back, or isolate her at R6. (But after 14 Q-R6 R-K1 15 N-N5 N-B1 16 P-R5, Black can hardly survive.)
- 14 N-N5! PxN 15 PxP R-B4 16 Q-R7+ K-B2 17 P-N6+ K-K1
18 QxP B-B1
18--N-B1 would have provided stronger protection and an escape hatch for the K. (Right. A likely continuation might be 19 R-R8 K-Q 20 P-N4 RxB 21 PxR and 22 P-B5--the attack continues.)
- 19 Q-R8
(Better Q-N8) Why not R-R8? (Good, too.)
- 19--R-N4
(A desperate effort to stop the KNP)
- 20 Q-N8 NxP
If Black is determined to sacrifice the N, 20--N-B3 is better: 21 PxN QxP--but it's still not good enough; 22 BxR QxB 23 R-R8 Q-K2 24 P-N7.
- 21 BxN K-Q2
(Or 21--RxB 22 P-N7 Q-K2 23 QxB+ or R-R8.)
- 22 R-R8 B-Q2 23 Q-R7+ Resigns.
(Premature? 23--K-B3! 24 RxB QxR 25 Q-B7+ K-N4 26 QxB RxB 27 P-R4+ K-R4 28 P-N4+ PxP 29 PxP+ KxP 30 R-N1+ K-R6! Q-R6! There is still some play here.)

Jimmy Hill vs. J. Hyatt, Notes by Hyatt.

- 1 Nf3 Nf6 2 g3 g6 3 Bg2 Bg7 4 d3 e6 5 e4 c5 6 O-O O-O
7 Nc3 Nc6 8 Bg5 Bg4 9 h3 Bd7
End of symmetry.
- 10 Qd2 Qc8 11 Kh2 e6 12 Bh6 Rb3 13 Ne2 b5
Forming a duo.
- 14 Bg7 Kg7 15 Nh4 e5!
Safe after 13 Ne2.
- 16 f4 ef4 17 gf4 Qd8 18 Nf3 Qe7 19 Ng3 b4
To prevent the Q from controlling the black squares.
- 20 Rae1 Rbe8 21 Qf2 Rh3 22 e5 Nd5 23 ed6 Qd6 24 Ne5 Nf6
25 Ne4 Ne4 26 Re4 Nd4 27 c3 bc3 28 bc3 Nf5 29 Rd1 Be6!
30 Nc4? Bc4 31 Rc4 Ne3 32 Rd2 Nc4 33 dc4 Qf6 34 Rd3
Draw agreed in time trouble.

5TH ANNUAL HALLOWEEN CLASSIC

31 OCTOBER, 1981

1. HILL, JIMMY	1882	W-6	W-4	D-2	2.5
2. HYATT, JAMES C.	1727	W-7	D-5	D-1	2.0
3. LEMASTER, DON	1708	W-8	---	---	1.0
4. CADE, RALPH B.	1663	W-9	L-1	W-5	2.0
5. FLOYD, WILLIAM B.	1581	W10	D-2	L-4	1.5
6. SCHWEIKERT, EDWARD	1473	L-1	L-9	W11	1.0
7. BUSSER, WAYNE A.	1429	L-2	W10	L-9	1.0
8. MATOS, LUIS A.	1378	L-3	L11	L10	.0
9. ROBINSON, MATTHEW E.	UNR	L-4	W-6	W-7	2.0
10. O'CONNOR, PATRICIA	UNR	L-5	L-7	W-8	1.0
11. BUFFINGTON, JOHN	UNR	---	W-8	L-6	1.0

RESULTS OF A MEMBERSHIP SURVEY CONCERNING SCCA NEWS

What should a state chess magazine be? There's no clear formula, other than the obvious requirement that it should report the chess news of the state. Examples from around the country range from rather sophisticated publications that compete with Chess Life in news and articles, down to very brief newsletters. The proper answer to the question is, I think, that a state publication should be what the members want, within the limits imposed by time and money.

With this in mind a survey was made at the State Championship to determine what the members like: the members present were asked to express their opinion of various kinds of material that has been included in SCCA NEWS. There were three choices--favorable, unfavorable, and neutral. Results are summarized in the table below. A total of seventeen responses were received. We shall have to presume the other thirty or forty members present were neutral in all respects, or just too busy playing chess.

Some of the results surprised me. I too like annotated games; but I never would have anticipated that the only universally desired feature would be tournament cross-tables! I feel much better now about the space devoted to them. And had I seen the poll before last issue it would have been quite different, but I don't regret that, for I enjoyed exploring the unfamiliar world of the chess problem. Incidentally, the survey also showed that few members would join for the magazine, or even for a bigger magazine.

Let me close with an invitation for contributions. SCCA NEWS will explore all aspects of S. C. Chess if they are submitted to us--biography, history, features, games, etc. It doesn't have to be polished; the Editor is ready to edit!

ORDER OF PREFERENCE, SCCA NEWS FEATURES

Cross-Tables	1.00
Annotated Games	0.74
National or Regional News	0.79
Editorials and Comment	0.79
Feature Articles	0.73
USCF News	0.59
Unannotated Games	0.59
Problems	0.44

On the above scale 1.00 is completely favorable, zero is completely unfavorable, and 0.5 is neutral.

CURRENT SCCA MEMBERS AND THEIR RATINGS

(Note membership survey elsewhere in this issue.
Ratings are through November supplement.)

	NAME	RATING	NUMBER
00001	POHL, KLAUS A.	2348 M	10214033
00002	BERRY, JACK J.	2069 C	10211808
00003	HYDER, M. LEE	2060 C	10214807
00004	SMELTZER, JEFFERY	2022 C	10213991
00005	ERB, DAVID	2004 C	11279945
00006	WILLIAMS, WAYNE GO.	1988 E	12186330
00007	TINKLER, PAUL E.	1981 E	10214360
00008	WILSON, J. FRED	1976 E	10209234
00009	HART, PATRICK D.	1964 E	10213341
00010	BRAUN, CHARLES E.	1927 E	10214734
00011	MCCAULEY, EDWARD	1921 E	10213096
00012	ELIAS, JOSE HECTOR	1919 E	12263530
00013	BLANKS, LINDSAY E.	1909 E	11052398
00014	HILL, JIMMY	1802 E	10212120
00015	PURVIS, LEE D.	1844 E	10741173
00016	JACKSON, PHILLIP F.	1841 E	10206499
00017	HAINES, DAVID M.	1825 E	10234956
00018	WILLIAMS, DAVID KN.	1825 E	10212685
00019	BEDELL, LESTER B.	1816 E	11106366
00020	KEEPLER, MANUEL	1802 E	10211816
00021	FISH, DENNIS L.	1791 E	12189850
00022	MARTIN, RALPH GREGG	1773 X	10213509
00023	CORBETT, III CLAUDE	1771 X	10214432
00024	CANTRELL, ALBERT M.	1771 X	10212677
00025	REED, WINSTON D.	1760 X	10213673
00026	FISHER, WADE F.	1728 X	10213231
00027	HYATT, JAMES C.	1727 X	11208932
00028	HUGHEY, JAMES E.	1726 X	10213506
00029	CLINGAN, MICHAEL N.	1715 X	11286561
00030	MAHAFFEY, MARION E.	1714 X	10214611
00031	RYAN, JOHN P.	1708/4	12309010
00032	LEMASTER, DON	1708 X	11582703
00033	CAUSEY, DAVID Y.	1701 X	10213606
00034	THORPE, TOM E.	1694 X	10211662
00035	DANGERFIELD, JR. H.	1663 X	12222220
00036	CADE, RALPH B.	1663 X	12059080
00037	WEAVER, III MARVIN	1663 X	11448291
00038	BLAND, JR. WILLIAM	1601 X	11329756
00039	FLOYD, WILLIAM B.	1581 X	11469250
00040	HALON, JAMES D.	1577 A	10108905
00041	BRYANT, RALPH G.	1571 A	10213592
00042	HAWTHORNE, BENJY F.	1564 A	11408249
00043	HWANG, IRVING	1548 A	11329799
00044	HARRIS, ORVILLE B.	1526 A	12189360
00045	MARTIN, DE NICOLAS	1515 A	11402780
00046	BEALE, JAMES E.	1514/12	12067430
00047	DODGEN, WILLIAM H.	1502 A	10214963
00048	GREENE, JR. NASH	1500 A	11347061
00049	PRICE, EDWARD C.	1474 A	11214843
00050	CALIFF, JOHN	1473/11	12361700
00051	PENDLETON, ANDREW	1469 A	11271324
00052	SLIMP, STEVE	1465/18	12152990
00053	BRYANT, WESLEY	1465 A	11230083
00054	CREWZ, DANIEL B.	1462 A	12077450
00055	MCCOY, DOUGLAS L.	1447 A	11347045
00056	LOWDER, RANDY J.	1443 A	12221920

Continued next page.

SCCA MEMBERS AND THEIR RATINGS, CONTINUED

	NAME	RATING	NUMBER
00057	SALZBERG, STEVEN	1435/16	12263520
00058	LAWRENCE, PHILLIP L.	1433 A	12100510
00059	BUSSER, WAYNE A.	1429 A	11505121
00060	SMITH, JAMES M.	1421 A	10212651
00061	ANTHONY, JOHN C.	1411 A	12202180
00062	LEWIS, LEROY E	1395 I	10212171
00063	MATOS, LUIS A.	1378 A	10531519
00064	LONDER, PHILLIP W.	1363/9	12333730
00065	JACKSON, ANDREW A.	1353 I	12246970
00066	CASTON, W. FRANK	1334 I	10212332
00067	CRANFORD, JOHN N.	1312 I	10174562
00068	WEISGROD, GEORGE J.	1311 I	11291023
00069	SIMMONS, JOHNNY A.	1278/4	12312700
00070	MCGINNISS, MANFRED	1256 I	12215070
00071	TICHENOR, CLARENCE	1168 N	11408745
00072	CARLISLE, JAMES H.	1147 N	12027680
00073	HYDER, ROBERT L.	1114/16	12263510
00074	LIPE, FREDERICK D.	1084/10	12133760

SOUTH CAROLINA PLAYERS (NOVEMBER)

1.	POHL, KLAUS A.	2348 M	10214038
2.	DE GUZMAN, ERNESTO	2202 M	12058110
3.	GRAHAM, CURTIS ADR.	2185 M	11867917
4.	LANPHEAR, CRANDALL	2099/17	12110700
5.	BERRY, JACK J.	2069 C	10211803
6.	HYDER, M. LEE	2068 C	10214807
7.	ZEIMETZ, JOSEPH	2050 C	11114253
8.	FERGUSON, RANDAL G.	2043 C	10072140
9.	HOLLOWAY, WILLIAM	2022/18	12110810
10.	SMELTZER, JEFFERY	2022 C	10213991
11.	BANFFY, FRANCIS G.	2018 C	10454785
12.	ERB, DAVID	2004 C	11279945
13.	COHEN, RICHARD	1991 E	11877912
14.	WILLIAMS, WAYNE GO.	1988 E	12186330
15.	TINKLER, PAUL E.	1981 E	10214360
16.	WILSON, J. FRED	1976 E	10209234
17.	WILSON, SCOTT G.	1976 C	12110800
18.	HART, PATRICK D.	1964 E	10218841
19.	BUSH, JR. HAROLD M.	1933 E	10212537
20.	BRAUN, CHARLES E.	1927 E	10214734

This second list includes all players resident in the state, members or not.

MEMBERSHIP SURVEYS

Don Lemaster has asked that the membership be surveyed on two questions. The first one is directed at all SCCA members, as follows:

Which would you prefer in our periodic listing of the ratings of S. C. players: all players resident in S. C. (as we currently publish), or rating lists of SCCA members only?

Prefer all players _____

Prefer SCCA members only _____

The second question is directed to players rated over 1700 only:

Please indicate below your preference for the top section of next year's S. C. Closed Championship. The reason for restricting this ballot to players over 1700 is to leave the decision up to the players most likely to be in the top section. Additional comments and suggestions are welcome.

I prefer:

4 rounds in 2 days _____

5 rounds in 2 days _____

5 rounds in 3 days _____

No preference _____

Name _____ ID# _____ Rating _____

Cross-Tables: Prince Henry Memorial, Dec. 4-10, Spartanburg.

1	David Williams	W4	D2	W3	2½-1½
2	Mickey Bush	D3	D1	W4	2-1
3	Mark Cantrell	D2	D4	L1	1-2
4	Emmanuel Seko	L1	D3	L2	½-2½

LATE NEWS

IT'S A BOY! The child the Smeltzers were expecting turned out to be a son. Congratulations to the new parents!

Thanks to the USCF for rating the State Championship without delay despite a hiatus in getting our affiliate renewal in-- it had fallen between the cracks sometime during the past year.

CROSS-TABLES

1981 S. C. Championships, Reserve Section

ID	PLAYER	ST	PRE		POST					TOT
			RTNG	RT/G	1	2	3	4	5	
11400745	1 TICHENOR, CLARENCE	SC	1168	1367	0-2	W10	W11	W-8	W-4	5.0
12369490	2 RAKER, JIMMY	SC	0	1560	L-1	W-7	W14	K11	W-6	4.0
12335210	3 VOLLENRIETH, R. JO	SC	1663/7	1569	W-4	L11	W12	W14	W-8	3.5
12221920	4 LOWDEN, RANDY J	SC	1436	1440	L-4	W--	W13	W10	L-1	3.0
12101950	5 MATOS, LUIS A	SC	1398	1406	L10	L14	W--	W12	W13	3.0
12794370	6 AMMONS, CHARLES	SC	0	1399	W-7	W12	L-8	W13	L-2	3.0
12361700	7 CALIFF, JOHN	SC	1473/11	1400	L-6	L-2	D-9	X--	B--	2.5
10174562	8 CHAFFORD, JOHN N	SC	1312	1340	W-9	F13	W-6	L-1	L-3	2.5
12256130	9 O'CONNOR, PATRICIA	SC	1277/11	1248	L-8	L15	D-7	W--	W14	2.5
12340290	10 MC MAHAN, JOHNNY	SC	0	1254	W-5	L-1	F15	L-4	D12	2.5
12215070	11 MC GINNISS, MANFRE	SC	1269	1308	W-4	W-3	L-1	L-2	U--	2.0
12263510	12 HYDER, ROBERT L	SC	1114	1127	W--	L-6	D-3	L-5	D10	2.0
12540280	13 RUFFINGTON, JOHN	SC	0	1157	W15	D-8	L-4	L-6	L-5	1.5
12379990	14 ELKINS, BRAD	SC	1218/3	1200	L11	W-5	L-2	L-3	L-9	1.0
12384270	15 BROWN, HUGH K	SC	0	1097	L13	W-9	L10	F--	U--	1.0

.State Warm-ups # 1, 2,3

ID	PLAYER	ST	PRE		POST					
			RTNG	RT/G	1	2	3	TOT		
10211662	1 THORPE, TOM E	SC	1694	1714	W-9	W-8	W-3			3.0
10213231	2 FISHER, MADE F	SC	1728	1717	W-7	L-3	W-8			2.0
10900981	3 LEGGETT, DE JUAN T	AZ	1652	1662	W10	W-2	L-1			2.0
12256130	4 O'CONNOR, PATRICIA	SC	890/2	1364	W-6	L-5	W-9			2.0
11382703	5 LEWISTER, DON	SC	1708	1671	L-8	W-4	D-7			1.5
11347061	6 GREENE, JR NASH	SC	1500	1504	L-4	D-9	W10			1.5
11347045	7 MC COY, DOUGLAS L	FL	1447	1463	L-2	W10	D-5			1.5
12101950	8 MATOS, LUIS A	SC	1378	1398	W-5	L-1	L-2			1.0
12100510	9 LAARENCE, PHILIP L	SC	1433	1428	L-1	D-6	L-4			.5
10212332	10 CASTO, FRANK	SC	1344	1310	L-3	L-7	L-6			.0

ID	PLAYER	ST	PRE		POST					
			RTNG	RT/G	1	2	3	TOT		
10212120	1 HILL, JIMMY	SC	1882	1904	W-5	W-4	W-3			3.0
10211662	2 THORPE, TOM E	SC	1718	1737	W10	W-7	W-4			2.5
10213231	3 FISHER, MADE F	SC	1717	1728	W-8	W-8	L-1			2.0
20213797	4 GIBBS, ROBERT M	SC	1624	1673	W12	L-3	W-8			2.0
11468250	5 FLOYD, WILLIAM B	SC	1581	1610	L-1	W-9	W-7			2.0
11208932	6 HYATT, JAMES C	SC	1691	1690	W-9	L-1	L-2			1.5
10213509	7 MARTIN, RALPH GREG	SC	1764	1732	W11	L-2	L-5			1.0
10208645	8 KENNICK, BARRY	NC	1433	1434	L-3	W12	L-4			1.0
12221920	9 LOWDEN, RANDY J	SC	1432	1436	L-6	L-5	W11			1.0
12215070	10 MC GINNISS, MANFRE	SC	1256	1269	L-2	D11	D12			1.0
11347061	11 GREENE, JR NASH	SC	1504	1500	L-7	W10	L-9			.5
12256130	12 O'CONNOR, PATRICIA	SC	1364/5	1298	L-4	L-8	D10			.5

ID	PLAYER	ST	PRE		POST					
			RTNG	RT/G	1	2	3	TOT		
10211804	1 MERRY, JACK J	SC	2033	2051	W-7	W-6	W-3			3.0
10212120	2 HILL, JIMMY	SC	1904	1910	W10	W-5	D-6			2.5
10741173	3 PURVIS, LEE D	SC	1844	1855	W-9	W-4	L-1			2.0
10213231	4 FISHER, MADE F	SC	1728	1727	W11	L-3	W10			2.0
11208932	5 HYATT, JAMES C	SC	1690	1700	W12	L-2	W-9			2.0
11106366	6 REDELL, LESTER R	SC	1816	1817	W-8	L-1	D-2			1.5
12059080	7 CADE, PALPH B	SC	1663	1654	L-1	D-8	W12			1.5
11347045	8 MC COY, DOUGLAS L	FL	1463	1476	L-6	D-7	W11			1.5
11342703	9 LEWISTER, DON	SC	1671	1651	L-3	W11	L-5			1.0
11347061	10 GREENE, JR NASH	SC	1500	1500	L-2	W12	L-4			1.0
12256130	11 O'CONNOR, PATRICIA	SC	1298/4	1277	L-8	L-9	L-8			.0
12379990	12 ELKINS, BRAD	SC	0	1218	L-5	L10	L-7			.0

CROSS-TABLES: 1981 S. C. CHAMPIONSHIPS

Championship Section

ID	PLAYER	PRE		POST					TOT	
		ST	RTAG	RTAG	1	2	3	4		5
10213991	1 SNAETZER, JEFFREY	SC	2022	2093	W0	W18	W-8	W-6	D-3	4.5
10214033	2 PDHL, KLAUS A	SC	2333	2332	L-9	W20	W18	W14	W-6	4.0
10211808	3 BERRY, JACK J	SC	2051	2088	W10	D-9	W16	W-8	D-1	4.0
12186330	4 WILLIAMS, WAYNE GO	SC	1988	2003	W21	D18	W-9	L-3	W-8	3.5
10214346	5 TIMBLEN, PAUL E	SC	1981	1992	W22	W14	L-6	D11	W12	3.5
10214407	6 HYDER, M LEE	SC	2068	2079	W13	W17	W-5	L-1	L-2	3.0
11278945	7 ERH, DAVID	SC	1985	1976	L18	W21	W13	L-8	W11	3.0
12263530	8 ELIAS, JOSE HECTOR	SC	1919	1936	W19	W12	L-1	W-7	L-4	3.0
10781173	9 PURVIS, LEE D	SC	1955	1902	W-2	D-3	L-4	D12	W13	3.0
10276499	10 JACKSON, PHILIP F	SC	1881	1856	L-3	W15	L11	W18	W19	3.0
10213347	11 HART, PATRICK D	SC	1971	1969	L12	W19	W10	D-5	L-7	2.5
12309010	12 KYAL, JOHN P	SC	1708/4	1817	W11	L-8	W21	D-9	L-5	2.5
12189850	13 FISH, DENNIS L	SC	1791	1781	L-6	W28	L-7	W15	L-9	2.0
10213584	14 HUGHEY, JAMES E	SC	1712	1761	W-7	L-5	W17	L-2	L15	2.0
12067430	15 REALF, JAMES E	SC	1514/12	1579	L17	L10	W19	L13	W18	2.0
11106366	16 BEDELL, LESTER H	SC	1817	1825	W-3	D-4	L-3	U--	U--	1.5
10212120	17 HILL, JIMMY	SC	1918	1886	W15	L-6	L18	U--	U--	1.0
11052397	18 BLANKS, LINDSAY F	SC	1909	1886	W-4	L-1	L-2	L10	U--	1.0
11488291	19 WEAVER, JII MARVIN	SC	1686	1663	L-8	L11	L15	U--	L10	1.0
10212685	20 WILLIAMS, DAVID KN	SC	1907	1907	L-1	L-2	U--	U--	U--	.0
10213509	21 MARTIN, RALPH GREG	SC	1732	1718	L-8	L-7	L12	U--	U--	.0
11208932	22 HYATT, JAMES C	SC	1700	1695	L-5	U--	U--	U--	U--	.0
11468250	23 FLOYD, WILLIAM B	SC	1810	1803	L14	U--	U--	U--	U--	.0
12077450	24 CREWZ, DANIEL B	SC	1462	1456	L18	L13	U--	U--	U--	.0

Amateur Section

ID	PLAYER	PRE		POST					TOT	
		ST	RTAG	RTAG	1	2	3	4		5
10214432	1 CORRETT, ILL CLAUD	SC	1771	1813	W13	W-6	W-9	W-2	D-3	4.5
10213506	2 CAUSEY, DAVID Y	SC	1701	1759	W-3	L-4	W-7	L-1	W-6	4.0
10213592	3 BRYANT, RALPH G	SC	1571	1638	L-2	W12	W16	W10	D-1	3.5
11347045	4 MC COY, DOUGLAS L	FL	1876	1581	W-8	L-2	W13	W-9	D-7	3.5
11288561	5 CLINGAS, MICHAEL W	AR	1715	1719	D10	L11	D14	W15	W13	3.0
11347061	6 GREENE, JIM WASH	SC	1500	1567	W11	L-1	W15	W-7	L-2	3.0
10211662	7 THORPE, TOM E	SC	1737	1712	W16	W15	L-2	L-6	D-4	2.5
11288932	8 HYATT, JAMES C	SC	1695	1678	L-4	L13	W17	W16	D-9	2.5
11498249	9 MATTHEW, BENJY F	SC	1564	1589	W17	W14	L-1	L-4	D-8	2.5
10213673	10 NEED, WINSTON D	SC	1768	1762	D-9	W17	D11	L-3	U--	2.0
10214611	11 MAHAFFEY, MARTIN E	SC	1740	1738	L-6	W-5	D10	D14	U--	2.0
12059990	12 CADE, RALPH B	SC	1654	1604	L15	L-3	F--	L13	W14	2.0
11466250	13 FLOYD, WILLIAM B	SC	1603	1611	L-1	W-8	L-4	W12	L-5	2.0
12333730	14 LINDER, PHILLIP W	SC	1501/15	1894	F--	L-9	D-5	D11	L12	2.0
11505121	15 RUSSELL, WAYNE A	SC	1429	1455	W12	L-7	L-6	L-5	W16	2.0
10212651	16 SMITH, JAMES W	SC	1421	1400	L-7	R--	L-3	L-8	L15	1.0
10213231	17 FISHER, GARE F	SC	1727	1673	L-9	L10	L-8	U--	U--	.0

Extra Games

ID	PLAYER	PRE		POST		TOT
		ST	RTAG	RTAG	TOT	
11488291	1 WEAVER, JII MARVIN	SC	1663	1666	W-6	1.0
12221920	2 LINDER, RANDY J	SC	1440	1454	W-5	1.0
12333730	3 LINDER, PHILLIP W	SC	1498	1445	D-4	.5
12283510	4 HYDER, ROBERT L	SC	1127	1140	D-3	.5
10212651	5 SMITH, JAMES W	SC	1400	1400	L-2	.0
12256130	6 COMANU, PATRICIA	SC	1244/15	1249	L-1	.0

CROSS-TABLES: USCS CHESS CLOCK SPECIAL, SPARTANBURG

PLAYER	PRE		POST			TOT	
	ST	RTNG	RTNG	1	2		3
1 DE GUZMAN, ERNESTO	SC	2135	2150	W23	W20	W-9	3.0
2 KISHPAUGH, JEFF C	NC	1627	1669	W35	D12	W11	2.5
3 HAM, MICHAEL W	SC	1500	1528	W28	W15	D-4	2.5
4 OLMSTED, FREDERICK	SC	1469	1503	W26	W14	D-3	2.5
5 ANTHONY, JOHN C	SC	1396	1411	W29	W31	D-7	2.5
6 LEWIS, JAMES A.	NC	1268/3	1264	B--	D-8	W33	2.5
7 FLOYD, THOMAS B	TN	1223/4	1367	W30	W16	D-5	2.5
8 HORTON, DONALD C	SC	1050	1116	W32	D-6	W17	2.5
9 COHEN, RICHARD	SC	1978	1991	W22	W10	L-1	2.0
10 TROY, JAMES G	NC	1721	1759	W19	L-9	W22	2.0
11 LEMASTER, DON	SC	1697	1708	W25	W24	L-2	2.0
12 SMITH, ROBERT M	SC	1686	1696	D21	D-2	W25	2.0
13 HARRIS, ORVILLE B	SC	1500	1526	L24	W21	W35	2.0
14 STOUGHTON, JOHN R	NC	1466	1484	W27	L-4	W28	2.0
15 LINDER, RANDY J	SC	1399	1425	W37	L-3	W26	2.0
16 CASTON, A. FRANK	SC	1316	1334	W18	L-7	W31	2.0
17 HOPPER, MICHAEL E	NC	1311/3	1243	W33	W32	L-8	2.0
18 SOLLINGER, DANIEL	SC	1213/15	1256	L16	W36	W30	2.0
19 HILL, JIMMY	SC	1480	1469	L10	W34	D-0	1.5
20 CORBETT, III CLAUD	SC	1756	1771	W34	L-1	D19	1.5
21 DE GUZMAN, JOEL	SC	1523	1532	D12	L13	W24	1.5
22 CANTRELL, ALBERT F	SC	1774	1771	L-9	W23	L10	1.0
23 HYATT, JAMES C	SC	1727	1725	L-1	L22	W34	1.0
24 HATHORNE, BENJY F	SC	1581	1564	W13	L11	L21	1.0
25 GOODMAN, J.S.	SC	1549/15	1547	L11	W35	L12	1.0
26 DE GUZMAN, ERNESTO	SC	1464	1454	L-4	W37	L15	1.0
27 SMITH, JAMES M	SC	1440	1421	L18	L28	L37	1.0
28 HORTON, HERBERT Y	SC	1333	1335	L-3	W7	L18	1.0
29 HORTON, GRANT H	SC	1218	1235	L-5	L30	W36	1.0
30 TAYLOR, BRIAN E	SC	1167/16	1154	L-7	W29	L16	1.0
31 THOMPSON, MARK E	TP	1148	1162	W36	L-5	L16	1.0
32 NASH, JR WILLIAM	SC	0	1000	L-8	L17	W38	1.0
33 O'CONNOR, PATRICIA	SC	0	890	L17	B--	L-6	1.0
34 LEGGETT, DE JUAN T	AZ	1687	1652	L20	L19	L23	.0
35 SEKO, EMMANUEL V	SC	1620	1591	L-2	L25	L13	.0
36 JOHNSON, KENNETH R	NC	1527	1500	L31	L18	L29	.0
37 JACKSON, DEAN	SC	1451/10	1355	L15	L26	L27	.0
38 THOMPSON, JILL	TN	868/13	868	U--	U--	L32	.0

MORE CROSS-TABLES

Palmetto Chess Classic, Columbia

	PLAYER	PFE		POST					TOT	
		ST	RTAG	RTAG	1	2	3	4		5
1	HILL, JIMMY	SC	1830	1905	W-7	W-3	W-8	W-4	D-2	4.5
2	BERRY, JACK J.	SC	2038	2056	W-5	W-8	W-4	H--	D-1	4.0
3	CLINGAN, MICHAEL N.	AR	1682	1715	W-6	L-1	D10	W-8	W-9	3.5
4	ELIAS, JOSE HECTOR	SC	1917/12	1904	W10	W-9	L-2	L-1	W-5	3.0
5	KEAVER, III MARVIN	SC	1630	1652	L-2	W11	W-9	W-6	L-4	3.0
6	CALIFF, JOHN	SC	1213/3	1490	L-3	W-7	W11	L-5	W10	3.0
7	BLAND, JR WILLIAM	SC	1595	1606	L-1	L-6	W13	H--	W11	2.5
8	THORPE, TOM E.	SC	1708	1691	W11	L-2	L-1	L-3	W13	2.0
9	CADE, RALPH B.	SC	1702	1678	W13	L-4	L-5	W10	L-3	2.0
10	FLOYD, WILLIAM B.	SC	1614	1605	L-4	W13	D-3	L-9	L-6	1.5
11	JACKSON, ANDREW A.	SC	1356/13	1325	L-8	L-5	L-6	W13	L-7	1.0
12	GERGEL, MAX G.	SC	1606/17	1606	U--	U--	U--	U--	U--	.0
13	MC GIANNISS, MANFRE	SC	1271	1256	L-9	L10	L-7	L11	L-8	.0

GAMECOCK GAMBIT II

14 NOVEMBER, 1981

1.	BERRY, JACK J.	2069	W11	W-8	W-4	L-2	3.0
2.	ERB, DAVID	2004	W12	W-9	D-5	W-1	3.5
3.	ELIAS, JOSE HECTOR	1919	L18	L15	W17	W21	2.0
4.	HILL, JIMMY	1882	W14	W10	L-1	L-F	2.0
5.	HYATT, JAMES C.	1727	W15	W13	D-2	W-F	3.5
6.	HUGHEY, JAMES E.	1724	L16	W17	W-7	L12	2.0
7.	THORPE, TOM E.	1694	W17	W16	L-6	W11	3.0
8.	CADE, RALPH B.	1668	W18	L-1	L12	W13	2.0
9.	FLOYD, WILLIAM B.	1581	W19	L-2	W13	W14	3.0
10.	GREENE, JR. NASH	1500	W20	L-4	L14	W15	2.0
11.	LINDSAY, OPIE D.	1470	L-1	W18	W15	L-7	2.0
12.	MCCOY, DOUGLAS L.	1447	L-2	W19	W-8	W-6	3.0
13.	BUSSER, WAYNE A.	1429	W-3	L-5	L-9	L-8	1.0
14.	MATOS, LUIS A.	1378	L-4	W20	W10	L-9	2.0
15.	MCGINNIS, MANFRED R.	1256	L-5	W-3	L11	L10	1.0
16.	BARRIENTOS, ALFONSO	NEW	W-6	L-7	---	---	1.0
17.	O'CONNOR, PATRICIA	UNR	L-7	L-6	L-3	L19	.0
18.	MCAHON, JOHNNY	UNR	L-8	L11	---	---	.0
19.	MERRILL, CLIFFORD M.	NEW	L-9	L12	L21	W17	1.0
20.	DILWORTH, DENNIS L.	NEW	L10	L14	---	---	.0
21.	ESCALENTE, JORGE A.	UNR	---	---	W19	L-3	1.0

BOOKS

One of the pleasures of being an editor is having the chance to review new chess books. Four new ones have recently come my way, three from Dover, and one from Alfred A. Knopf. All are good quality paperbacks with stiff, glossy covers.

Easily the best of the lot is "A Picture History of Chess" (Fred Wilson, Ed., Dover, \$8.75) Unlike most of Dover's books this is an original publication in a spacious 8 3/8 by 11 1/4 inch format. Almost any chessplayer will enjoy looking at the pictures and other material collected in this volume, starting with an Egyptian bas-relief showing queen Nefertari at what looks like a chessboard. About all the top masters of the last 150 years are in it.

On the other hand, Raymond Smullyan's second book of "retrograde analysis" problems entitled "The Chess Mysteries of the Arabian Knights" will appeal to a smaller group, namely those who enjoy puzzles for their own sake. This is a book that will definitely not improve your game, but you may enjoy it, nonetheless. (Knopf, \$6.95)

Arnold Denker is the United States' newest International Grandmaster, though the title was awarded for his play during the forties. A hearty, athletic man, now retired and living in Florida, he has become well known again through his regular participation at the U. S. Open, Lone Pine, and other major tournaments. He displays a love of chess that is refreshingly welcome in the often cynical world of master play. His book "My Best Chess Games, 1929-1975" is however mostly a reprint of a volume published in 1947. (Dover, \$4.50) It was a reasonably good book in its time, but an awful lot of better material has been published since, and by comparison I can't recommend it.

The final book is a Nimzovich work not previously published in English: "Carlsbad International Chess Tournament 1929". (Dover, \$3.50) This contains thirty annotated games from this event, which was Nimzovich's greatest success, in a good translation by Jim Marfia. For the serious student this is the prize of the lot; Nimzovich's comments on middle game and endgame positions will never be dated. The book is good value in this inflated time.

COMING EVENTS

Columbia, January 21: Saturday Swiss #1, 3-SS, 40/70, Univ. of SC Russell House (Greene St.), Room 327. EF \$5 if received by 1/21, \$6 at site. \$8 50% return of entries. Register at site 8:30-9:30 or in advance to Don Lemaster, 1471 Pine St., West Columbia, SC 29169. Rounds 10, 1:30, 5. No smoking. ST.

Charleston, February 6-7: The 10th annual Snowstorm Special. At the North Charleston City Hall, Room 517. This is at Hall Drive just off I-26. 5-SS, 50/2. EF \$15 in advance (must be received by Jan. 30) or \$20 at site. Prizes: \$150 1st, \$100 2nd, \$50 3rd, 5-0-B-E/Var. each \$25. \$400 Guaranteed-5 Grand Prix points. Rounds 9-2-7; 9-3. Register at site 8-8:50, or in advance to Charleston Chess Club, PO Box 634, Sullivan's Island, SC 29482. Limited Smoking. Note special rates at Days Inn, I-26 at Montague: 221.88-226.88.

Spartanburg, February 20: Three one-day events at USC-Spartanburg, I-85 at US 176.

February Open: 4-SS, 40/65. EF \$5, \$5 jr. Guaranteed prizes 50-20-10, and \$5 upset prize. Rds. 10-1-4-7. ST membership reqd, other states OK.

Quads: 3-SS, 40/70. EF \$5, \$4 Jr. Trophy to 1st each qud. Rds. 10, 2, 6. ST reqd.

Beginners' Open: 4-SS, 40/45. EF \$5, \$4 Jr. USCF membership to all scoring 3 or more points. Rds 10-12-2-4.

All events: Players eligible for chess clock door prize. No smoking. Advance entries to David Williams, 109 Applewood Ln., Spartanburg 29302 (571-2861). Reg. Not stated, but note that play starts at 10 in all sections.

Columbia, March 6: Gamecock Gambit III.

Columbia, March 27: Gamecock Gambit IV.

Each is a 4-SS, 40/70, at Russell House Rm 327, USC. EF \$8 if received two days in advance, \$10 at site. \$4 50% of entries. Reg. 8:30-9:30 or in advance to Don Lemaster, 1471 Pine St., West Columbia, SC 29169. ST, NS. Rounds 9:30, 12, 2:30, 6.

Columbia, April 3-4: Columbia Open. 5-SS, 40/90, Rm 327 Russell House, USC. EF \$12 if received by 4/1, \$15 at site. \$40% of entries. Reg. in advance to Don Lemaster or at site 8:30-9:30. Rds. 10, 2, 6; 10, 2:30. ST. NS

NEXT SCCA NEWS: Copy should reach the Editor by mid-March. We aim to publish in early April.

SCCA NEWS is published by the South Carolina Chess Association, a non-profit organization of chess players and persons interested in chess in South Carolina. The SCCA seeks to encourage and foster the playing of chess within the state. It is the recognized state affiliate of the U. S. Chess Federation for South Carolina.

Any person is eligible to become a member through payment of annual dues to the Secretary. Regular dues are \$6; Junior dues for persons 18 years of age and younger are \$3. A person may become a Patron member by payment of \$10.

SCCA NEWS is edited by Lee Hyder, 33 Longwood Dr., Aiken, SC 29801. It is printed at the Bagpipe Press, Hodges, S. C.

SCCA OFFICERS AND THEIR ADDRESSES

President: William B. Floyd, 4315 Devereaux Rd., Columbia, SC 29205.

Vice-President: Paul E. Tinkler, 1716 Pearlott St., Charleston, SC 29407.

Secretary: Don Lemaster, 1471 Pine St., West Columbia, SC 29169.

Treasurer: Marion E. Mahaffey, 1207 Memorial Park Rd., Lancaster, SC 29720.

Immediate Past President: Philip F. Jackson, 2630 Cooper Ave., Columbia, SC 29205.

Editor: Lee Hyder, 33 Longwood Dr., Aiken, SC 29801

FIRST CLASS MAIL

SCCA NEWS
4315 Devereaux Rd.
Columbia, SC 29205



Henry J. White
725 Moss St.
Charleston, S.C.
29407