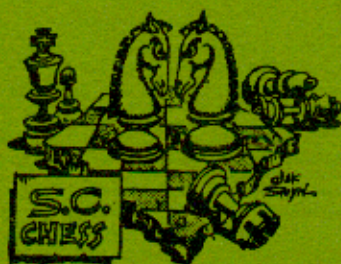


SCCA NEWS

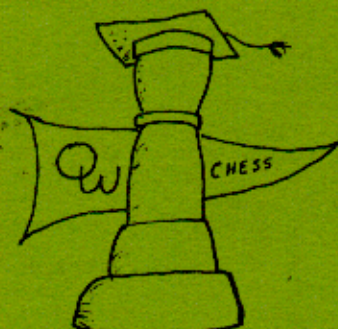
Vol. 1 No. 3 July '82



ORANGEBURG- WILKINSON

1982

HIGH



SCHOOL

CHAMPIONS!

CONTENTS THIS ISSUE

NEWS FROM S. C.	pp. 3, 6, 7, 20
GAMES	pp. 4, 5, 8-12, 28, 31
CROSSTABLES	pp. 5, 12, 16, 17-21, 25
PROBLEMS	pp. 10, 29
EDITORIAL	p. 13
POSTAL RATINGS	p. 14
BOOK REVIEWS	pp. 15-16
PRESIDENT'S MESSAGE	p. 21
SCHOLASTIC CHESS (A reprint)	pp. 22-25
TOURNAMENT ANNOUNCEMENTS	pp. 26-27
INTERNATIONAL NEWS	p. 30
CORRESPONDENCE	p. 21

This issue is a bit later than we planned because we held up publishing to get the arrangements for the State Championship in it. The next issue will be distributed at the State Championship and simultaneously by mail.

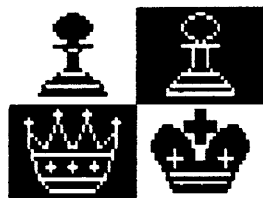
LH



CONTRIBUTORS THIS ISSUE

Edward McCauley, Patrick Hart
Don Lemaster, Bill Floyd
Harold Bush, David Williams
Bill Corbett
Marion Mehaffey
Jeff Smeltzer

Charleston
Columbia
Spartanburg
Taylors
Lancaster
Greenville



Orangeburg-Wilkinson Wins High School Championship

High School chess is alive in South Carolina! On May 8 four teams from around the state met in Columbia for the South Carolina High School Chess Invitational.

Orangeburg-Wilkinson High School of Orangeburg came out on top in the event, scoring 8 1/2 points of a possible 12 to edge out Wade Hampton of Greenville by one point. Wilcrest of Dalzell scored 5, and Carolina High of Greenville scored 3 in fourth place. The four teams had qualified from two preliminary tournaments held in the upper and lower parts of the state.

Outstanding individual scores were turned in by George Disher of O-W, who scored 2 1/2-1/2 on Board 1; Matt Elliott of Wade Hampton on Board 2 (3-0); Kenneth Cook of O-W on Board 3 (3-0); and Steve Alverson of Wade Hampton and Clayton Jones of Carolina on Board 4, each with 2-1.

Bill Corbett, the Coach of Wade Hampton, played a big part in organizing the event, which was held at Russell House at the University of South Carolina. Don Lenaster directed.

Games from this event and the preliminary events are included in the Games section, and complete cross-tables are also included in this issue.



STATE CHAMPIONSHIP SET FOR COLUMBIA

SCCA President Bill Floyd has announced that the 1982 South Carolina State Championships will be in Columbia October 22-24. The site will again be the Seibels-Bruce Building. Full details are in "Tournament Announcements."

HIGH SCHOOL GAMES

Here are some games from this spring's high school competitions:
From the Upper State High School Championship, S. Alverson of Wade Hampton takes on K. Luedeman of Seneca:

1 e4 Nf6 2 Nc3 d5 3 d3 (a) e6 4 e5 Nfd7 5 Nf3 Nc6 (b) 6 d4
f6 7 Bb5 a6 8 Ba4 Bb4 9 O-O Bxc3 10 bxc b5 11 Bb3 fxe 12 dxe
Ndx e5 13 Nxe5 Nxe5 14 Bf4 Qf6 15 Bxe5 Qxe5 16 Re1 (c) Re4
(d) 17 Qxe4 dxe 18 Rae1 Bb7 19 Bxe6 Rd8 20 Bf5 c6 (e) 21
Bxe4 h6?? (f) 22 Bxc6+ Kf8 23 Bxb7 Rd2 24 Bc6 Kf7 25 Be4 a5
26 Rd1 Rxd1 27 Rxd1 Re8 28 Re1 Kf6 29 g4 Kg5 30 f3 Rc8 31
Re3 Kf4 32 Kf2 b4 33 cxb axb 34 h3 Rc5 35 h4 Ra5 36 Bd5
Resigns. (g)!sf1

Notes by Bill Corbett:

- a. e4 or e5 are more usual.
- b. c5 causes White much more trouble.
- c. Re1! d. Black would have done better if he had played Qxe1.
- e. O-O gives Black more play.
- f. O-O is NECESSARY at this point.
- g. Re4 cannot be parried.

From the State Team Championship, David Adcock of Wade Hampton plays
Brent Dogear of Carolina:

1 d4 e6 2 Nf3 d5 3 e3 Nc6 4 Bb5 Bd7 5 Ne5? (a) Nxe5 6 dxe
Bxb5 7 Nc3 Bb4 8 Bd2 Bxc3 9 Bxc3 Bc6 10 0-0 Qg5 (b) 11 g3 f6
12 exf Nxf6 13 h4 Qf5 14 Rd4 Qxc2 15 Rc1 Qf5 16 Bb4 Bb5 17
Qc5! 0-0-0 (c) 18 Qxb5 (d) Ne4 19 Qa5 Rd7 20 Qxa7 Kd8 21
Qa8 mate.

- a. a3 would have been satisfactory.
- b. Threatening d5!
- c. Black's only move is Kf7.
- d. White is so relieved at having his piece returned that he overlooks Qxc7 mate!

In the Upper State tournament Curtis Graham of Seneca, playing White,
lost a tough one to Steve Wells of Wade Hampton:

1 Nfe d5 2 d4 Bg4 3 c4 Nf6 4 Nc3 Bxf3 5 gxf e6 6 Bg5 c6 7
Qb3 b6 8 e3 Nbd7 9 O-O-O Qc7 10 Kb1 Bd6 11 e4 dxc 12 Bxc4
Bf4 13 Bh4 Bxb2 14 Bxe6 fxe 15 Qxe6+ Kf8 16 Bxf6 Nxf6 17 a5
Re8 18 Qc4 Bx35 19 dxe Rxe5 20 Qf4 Re7 21 Qf5 Qe5 22 Qc8+
(a) Kf7 23 Qxc6 Rc7 24 Qd6 Qf5+ 25 Ka1 Rd7 26 Qc6 Rhd8 27
Nb5?? Rxd1 28 Resigns

- a. Better would have been 22 Rd8+ Kf7 23 Qxe5 Rxe5 24 Rxb8.

Matt Elliott of Wade Hampton, playing Black, defeated Ben Aiken of Carolina in the State tournament this way:

1 e4 e5 2 Nf3 Nc6 3 Bb5 a6 4 Bxc6 dxc 5 Nxe5?! (a) Rd4 6 Nf3 Qxe4+ 7 Re2 Qxe2+ 8 Kxe2 Bg4 9 Re1 O-O-O 10 Nc3 Nf6 11 d3 Bc5 12 Kf1 Bxf3 13 gxf Rhe8 (b) 14 Bg5 Be7 15 Ne4 (c) Nxe4 16 Bxe7 Rxe7 17 fxe Re5 18 f4 Rh5 19 Re2 Rd6 20 e5 (d) Rd4 21 Rf2 Rh4 22 Re1 Rdx f4 23 Rxf4 Rxf4+ 24 Ke2 (e) Rh4 25 Rh1 c5 26 Kf2 Rh5 27 Re1? (f) Rxh2+ 28 Ke3 Rxc2 29 Rb1 (g) Kd7 30 a3 Ke6 31 Resigns.

- More usual is d4.
- h6 keeps the bishop from intruding.
- Re2! threatens to control the open file.
- Rd1 saves the pawn.
- Better would be Kg2.
- Since the Kf is already lost, e6 at least isolates Black's pawn.
- Rg1 is better, i. e. if g6 30 Rf1 gives White a passed pawn--though probably too late.

CROSSTABLES 1982 S.C. High School Championships

	Rd. 1	Rd. 2	Rd. 3	Total
Orangeburg-Wilkinson:				
				(8 1/2)
1. George Kisher	W5	W13	D9	2 1/2
2. Steven Lodge	L6	W14	W10	2
3. Kenneth Cook	W7	W15	W11	3
4. Freddie Glover	L8	L16	W12	1
Wade Hampton (Greenville):				
				(7 1/2)
5. Steve Wells	L1	D9	W13	1 1/2
6. Matt Elliott	W2	W10	W14	3
7. David Adcock	L3	L11	W15	1
8. Steve Alverson	W4	W12	L16	2
Hillcrest (Dalzell):				
				(5)
9. Ted Holden	W13	D5	D1	2
10. Keith Allen	L14	L6	L2	0
11. Joe Green	W15	W7	L3	2
12. Tim Martin	W16	L8	L4	1
Carolina (Greenville):				
				(3)
13. Scott Ferrell	L9	L1	L5	0
14. Ben Aiken	W10	L2	L6	1
15. Brent Degear	L11	L3	L7	0
16. Clayton Jones	L12	W4	W8	2

NEWS FROM AROUND THE STATE

Charleston

Edward McCauley is the new Charleston Chess Champion for 1982. McCauley won the title by taking the annual tournament in April with a perfect 4-0 score. There was a four-way tie for third among Patrick Hart, Lindsay Blanks, Paul Tinkler, and Bill Brichenstein; Hart came out on top on the tiebreak. Philip Lawrence's score of 2-2 gave him the prize for best player with a rating under 1700.

David Causey was elected President of the Charleston Chess Club for 1982. Paul Tinkler was chosen as Vice President and Patrick Hart as Treasurer.

Ten players competed in "The Ed's Hot Here" Sectionals on June 13. In the first section three players tied for first with 2-1: Patrick Hart, Doug Taffinder, and Paul Tinkler. Hart won a USCF membership on tie-break. In the second section Edward Price beat out five others with a perfect 3-0 score. Henry Cabaniss directed.

Spartanburg

Forty players participated in the "Chess in May" tournament May 22. There were ten sectional winners, headed by North Carolina master Jim Mottonen and Candidate Master Neal Harris, also from the Tar Heel State. The remainder of the list included Harold Bush, Jr., Michael Williams, Ernesto DeGuzman, Robert Strickland, John Anthony, Herbert T. Horton, Dean Russell Coler, and Clyde Gray, Jr. David Williams directed for the Spartanburg Chess Club.

Spencer Mathews made a triumphant return to the Piedmont chess scene by winning the Spartanburg Chess Club Championship in March and April. Mathews won all six games he played in a round robin tournament. Harold Bush, our correspondent for this event, took second with 6-1. (One of his opponents subsequently withdrew before playing Mathews.) Two new members of the club participated. David Williams was third, losing to Mathews and Bush. Bush says he's ready for a match with Williams!

Also in Spartanburg David Collins won the O. F. Earle Elementary School Championship and David Gosnell won a tournament at Campobello-Granling Elementary School.

Lancaster

Marion Mehaffey and several other members of the Lancaster chess

(Continued next page)

community are forming a non-profit corporation for holding chess tournaments with guaranteed money prizes. Two grades of membership are available, at \$10 and \$20. Interested persons should write Mahaffey at the address on the back cover.

Columbia

Jack Berry scored a perfect 7-0 to sweep a field of 14 players in the Falmotto C.C. Championship tournament held in January through March of this year. David Erb scored 6-3 to take a clear second place, with Tom Thorpe a clear third with 5 1/2- 3 1/2. Clarence Tichenor won the Under 14/Unrated prize with a 4 1/2-4 1/2 score, edging out Andy Jackson who scored 4-5. Don Lemaster directed this event at the Bruce Building.

Jimmy Hill, James Beale, Bill Bland, and Paul Wester won their respective sections in a quad tournament held at the Falmotto Chess Club. Jimmy Hill scored 2-1 to win the "A" section, James Beale scored 3-0 to win the "F" section, Bill Bland scored 3-0 in the "C" section, and Paul Wester also had a 3-0 score in the "B" section. Don Lemaster directed this 16 player event held in May-June.

Gamecock Gambit IV, March 27: Lee Hyder, David Erb, and Jimmy Hill each scored 3 1/2 - 1 1/2 and tied for first through third in this 21 player event. Following close behind this trio were Leland Fuerstman, Bill Floyd, Thomas Odom, and Samuel Playfair, each with 3-1 scores. Barryl Ferguson, a Category III player from VPI who was working this term in the Aiken area, upset Klaus Fohl in the first round, even though Fohl was the highest rated player in the event and in the State!

Columbia Open, April 3: Leland Fuerstman scored 3-1 to win this event from 9 other players. Close behind were David Williams, Russell Thurmond, Cliff Hyatt, and Anwar Ahmadieh with 2 1/2-1 1/2 each. The event was changed from 5 to 4 rounds because of the low entry.

Saturday Swiss # 2, May 1: Jack Berry scored 3-0 to win this 14 player event, followed closely by Leland Fuerstman and Jimmy Hill with 2 1/2-1 1/2 scores. Hill's draw with Fuerstman allowed Berry to take first place alone.

Midland Open, June 5-6: Jack Berry and Greg Fast tied for first with 4-1 in a 21-player tournament. David Erb was third with 3 1/2-1 1/2. Jimmy Hill, John McCalmont, David Miller, Marion Mahaffey, and Martin Mahaffey each scored 3-2. Fifteen players participated in the top section, and in the bottom section six players played a round-robin. In this group James Canitz won with a 4-1 score, Nelson Jones was second with 3 1/2-1 1/2, and Randy Louder was third at 3-2.

Continued on P. 20

GAMES

EDITED BY C. E. BRAUN

THE CLASSIC SICILIAN

The Sicilian Defense is actually a collection of not-so-closely related defenses. It is rich in transpositions, waiting moves, and other subtleties. The O'Kelly Variation is typical. After 1. P-K4 P-QB4 2. N-KB3, Black plays 2--P-QR3. The basic point is that after 3. P-Q4 Pxf 4 Nxf N-KB3 5 N-QB3, Black plays 5--P-K4 and White no longer has QN5 available for his knight as in other variations. Moreover, Black can develop his KB to N5 or B4, options not available in the Najdorf Variation where P-Q3 is played before P-QR3.

Of course, transposition is a two-edged sword. After 1. P-K4 P-QB4 2 N-KB3 P-QR3, White doesn't have to play 3. P-Q4. If White is familiar with it, the Wing Gambit is more effective than usual: 3 P-QN4 Pxf 4 P-QR3 Pxf 5 OExf P-Q3 6 P-Q4 with good compensation for the P. Another variation where P-QR3 isn't particularly effective is the 3. P-B3 variation. For example 3--P-Q3 4. P-Q4 N-Q2 5. B-Q3 P-K3 6 O-O with advantage, or 3--N-KB3 4 P-K5 N-Q4 5 P-Q4 Pxf 6 Pxf, or 3--P-Q4 4 Pxf Qxf 5 P-Q4 P-K3 6 B-Q3 N-B3 7 O-O N-B3 8 B-K3, also with advantage in each case.

Another idea was played by two of our better players in the following games.

Pat Hart vs. Lucas: 1981 LPO Open.

1 P-K4 P-QB4 2 N-KB3 P-QR3 3 P-Q4 Pxf 4 Nxf N-KB3 5 N-QB3 P-K4 6 N/4-K2 (a) B-B4 (b) 7 Q-Q3 (c) N-N5 8 N-Q1 N-RB3 9 P-KB3 N-B3 10 B-K3 P-Q3 11 N/2-B3 O-O 12 B-K2 N-QN5 13 Q-Q2 Q-N3 14 N-R4 Q-Q4 15 N/4-B3 P-Q4 16 Pxf B-B4 17 R-QB1 QNxf??(d) 18 Nxf QxQ+ 19 KxQ Resigns

- This retreat is not possible in the Najdorf (where Black has played P-Q3 and White has played B-K2).
- Another try is 6--B-N5 7 B-N5 P-KR3 8 B-N Q-NB 9 Q-Q3 B-B4 10 P-B3 Q-QN3 11 O-O-O N-QB3 12 N-Q5 N-N5 13 N-N Q-N 14 P-KN4 with advantage; for 7 P-QR3 see the next game.
- This is premature. Best is 7 N-N2 (Another good try is 7 B-K3) P-Q3 (or 7--Q-N3 8 Q-B3 P-Q3 9 N-B5) 8 B-K2 B-K3 (or 8--P-KR4 9 Bxf NAB 10 N-N Q-R5 11 N-N3 P-KB4 12 Pxf Bxf 13 N-Q5 followed by B-K3) 9 O-O B-Q5 (9--O-O 10 K-R1 P-Q4 11 P-KB4) 10 B-KN5 QN-Q2 11 N-Q5 B-N 12 P-B P-KR3 13 B-N Q-NB 14 N-R5 O-N4 15 P-KR4 Qxf 16 Nxf; all lines favoring White.
- Black has a good game after 17--QR-Q1.

(Continued next page)

Lee Hyden vs C. Lang, 1981 Charleston Classic.

1 e4 c5 2 Nf3 a6 3 d4 cxd4 4 Nxd4 Nf6 5 Nc3 e5 6 Nde2 Bb4 7
a3 (a) Bc5 (b) 8 Nc3 (c) Nd4 9 Be2 Nc6 10 O-O Be6 11 Bg5 Nd4
12 Nh5 (d) Ne2+ 13 Qxe2 Rg8 14 d5 Bxd5 15 Bxd5 h6 16 Bxf6
gxf6 17 Rf3 Rg6 18 Ng3 Ke7 19 b4 (e) Ba7 20 c4 Qc7 21 Rac1
b6 22 Rfd1 Rg8 23 Nf5+ Kf8 24 g3 Qd7 25 h4 Rh8 26 Kf1 h5 27
Ke1 b5? (g) 28 c5 dxc5 29 d6 Kg8 30 bxc5 Rg4 31 c6 Bxf2+ 32
Qxf2 Re4+ 33 Kf1 Qe6 37 d7 Resigns

- a. Better 7 B-KN5; see the previous game.
- b. Just giving White the move; better was 7--Bxc3 & Nxc3 d6.
- c. Prevents Ng4.
- d. This fixes Black's king in the center.
- e. White now expands on the queenside to further passivate the Black position.
- f. A better plan is 20--Rc6 21 Rac1 Qd7.
- g. Now White breaks through decisively. (White's "hysterical" king moves have been preparing for c5 as a pawn sacrifice, opening the QN file without allowing checks or leaving the KEF pinned. LH)

Here's a quick win by David Williams over Bob Spurrer, Editor of the Carolina Gambit; Williams was White, and provided the notes.

1 P-QB4 N-KB3 2 N-QB3 P-K3 3 P-K4 (a) P-Q4 (b) 4 P-K5 N-K5
(c) 5 Q-R2 (d) NXXI 6 OXXI P-QB4 7 PXP PXP 8 N-B3 B-K2 9
B-KB4 (e) 0-0 10 B-Q3 P-KR3 11 Q-Q2! (f) P-B4 12 P-KR4 B-K3?
(g) 13 BXXP! PXB 14 QXP K-B2 15 P-KN4!! (h) Q-Q2 16 Q-R5+
K-N2 17 PXP RXP 18 BXR BXB 19 R-KN1+ K-B1 20 Q-R8+ resigns.
(i)

- a. Initiating the Flohr-Mikenas Attack. For the backward QP, White avoids the Nimzo-Indian, and challenges the P at KB3 with an eventual P-K5.
- b. The usual move here. 3--P-B4 leads to a wild game in which White is almost forced to sacrifice a pawn.
- c. Playable, but 4--f-Q5 5 P-B4, P-B4 & Nf3, Qxf2 7 P-Q4 P-B4 (or P-QN3) is considered stronger.
- d. One of Watson's fine recommendations! After the exchange of N's, White gets a wedge on K5, the Queen-file, and two strong bishops.
- e. Overprotection is a Nimzovich.
- f. Formerly, White threatened sacrifices on KR7. Now the same applies to KR6. Black is provoked to a further loosening of this king-side.
- g. On the surface the centralization of the B looks good. However, it is undefended on K5, and Black can ill afford precious time to defend it as White's next few moves make clear.
- h. White spent as much time on this move as on all previous moves combined. Other moves allow Black to wrangle free, E.
- g. 15 Q-R5+, K-N2 followed by R-R1.
- i. Who said the English was a dull opening? This win got me \$100 as the top 1900 player in the tournament.

(Continued next page)

Here's a hard-fought game between Klaus Fohl and Pat Hart, where Hart gets on top for most of the game, but can't stay there. Time rears its head again and the master prevails. Notes by Lee Hyder.

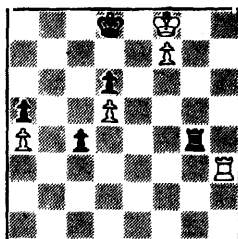
1. P-K4 P-QB4 2. N-QB3 N-QB3 3. P-KN3 P-KN3 4. B-N2 B-N2 5. P-Q3 P-Q3 6. P-B4 R-N1 7. N-B3 N-B3 8. O-O O-O 9. B-Q2 P-QN4 10. P-QR3 P-QR4 11. R-N1 (a) P-N5 12. PXP RPXP 13. N-K2 Q-B2 (b) 14. P-N3 B-Q2 15. P-R3 N-Q5! (=) 16. N/2XN? (c) PXN 17. P-N4 KR-B1 18. R-B1 R-N4 19. NXP? (d) Q-B4 20. B-K3 NXNP! 21. PXN BXN 22. BXB QXB+ 23. R-B2 R-QB4 24. P-B5 B-N4 25. B-B1 P-Q4 26. PXQP RXQP 27. B-N2 R/4-QB4 28. B-K4 Q-K6 29. Q-Q2 QXQ 30. RXQ R-B6 31. R-R1 B-Q2 32. P-Q4? R-K6 33. B-N7 R/1-B2 (e) 34. K-B2 R-R6 35. B-N2 R/6-B6 36. B-K4 B-B3 37. P-Q5 R-Q2 38. R/1-Q1 B-N2 39. R-Q4 P-K3 40. P-B6! RXQP? (f) 41. BXR RXP+ 42. K-K3 BXB 43. R-QB4! R-B6+ 44. RXR PXR 45. R-Q3 P-B7 46. R-B3 P-B8 (Q)+ 47. RXQ P-R4 48. P-N5 and won.

- The position is a fairly standard closed Sicilian. The approach adopted by White is very slow and gives Black a chance to take the initiative.
- Hart suggested F-N6 here, but simply 14. P-B3 in reply looks good. 13--Q-N3 looks better than the move played.
- This gives Black a fine target. After such a continuation as 16. P-N4 B-B3 17. P-B3 N-Q2 the game would be complex and nearly equal.
- Better 17. Q-K1 Q-N3 20. Q-R4.
- Hart suggests 33--R/1-B6 as better.
- Time trouble spoils a complex and interesting game.

(Continued next page)

Bellin-Bukic
EUROPEAN TEAM CHPP,
1977

BLACK TO MOVE



The position above was brought to the Editor's attention through Mark A. Peilen's column in Northwest Chess. What should happen in this position with best play by both sides? Work on it, and then turn to page 11 for further information.

GAMES, CONTINUED

From the Palmetto Club Championship, here's an interesting game between David Erb and Mike McGinness. McGinness yields the center, advances his KfP, and wins quickly!

1. P-Q4 P-KN3 2. P-QB4 B-H2 3. N-QB3 N-KB3 4. P-K4 P-Q3 5. B-K2 P-QN3 (a) 6. B-K3 QN-Q2 7. N-KB3 (b) N-H5 8. B-H5 P-KR4? 9. P-KR3 KN-B3 10. O-O (c) B-H2 11. P-K5 (d) N-K5 12. B-B4? (e) NxN 13. PxN PxP 14 PxP P-K3 15. Q-B1 Q-K2 16. KR-Q1 O-O-O 17. B-H5 P-KB3 18. PxP BxP 19. BxB QxB 20. P-QR4 P-R4 (f) 21. Q-K3 N-B4 22. N-H5 B-B3 23. B-B3 RxR+ 24. RxR BxB 25. PxB NxP 26. NxP R-K1 27. Q-K4 K-H1 28. Q-B6 RxN 29. QxN QxQB 30. R-RB+ K-H2 31. Q-H5 (g) QxKBP 32. Q-Q7 R-KB+ 33. Resigns.

Notes by Lee Hyder:

- Unusual. Now 6. P-KB4 would be interesting and critical.
7. P-KB3 or P-KB4 would be worth considering.
10. Q-Q2 B-N2 11. B-Q3 P-B4 12. P-Q5 with advantage to White.
11. B-Q3 would maintain some advantage.
12. NxN is much to be preferred. Now Black makes progress fast.
- Securing the knight and taking control.
31. Q-Q7 is better, but after QxEP 32. Q-B3+ K-B3 33. Q-RB+ K-B4 and Black is still winning.

With the 1982 Charleston Classic coming up, here's a good game from last year's event. James D. Hanlon is White against John Crawford.

1 P-QB4 P-Q4 (a) 2 PxP N-KB3 (b) 3 N-QB3 (c) HxP 4 P-KN3 (d) NxN (e) 5 HPxN P-K4 (f) 6 B-H2 B-QB4 7 N-B3 N-B3 8 O-O O-O 9 B-H2 R-K1 10 P-K3 Q-Q6 11 R-K1 (g) B-KN5 12 P-KR3 BxN 13 BxB QR-Q1 14 R-K2 P-K5 15 B-H2 N-K4 16 P-QR4 N-QB5 (h) 17 B-QB1 R-K3 (i) 18 B-KB1 N-K4 19 K-R1 N-KB6 20 B-KN2 QxBP 21 R-QR2 R-Q3 22 R-QB2 Q-H5 23 BxN PxP 24 R-K1 B-H3 25 QxKBP QxRP 26 R-H2 P-QB3 27 P-Q4 Q-R8 (j) 28 Q-K2 O-R4 29 B-Q2 Q-KB4 30 K-H2 R-KR3 31 P-KN4 R-KN3 32 P-K4 Q-Q2 33 B-QB3 BxRP 34 BxB QxB 35 RxP R-Q3 36 P-K5 R-K3? (k) 37 R-Q1! QxR 38 QxO R-Q-K1 39 Q-KB3 R-KB1 40 QxQBP R-QR1 41 Q-QR6 P-KR3 42 RxRP RxR 43 QxR P-KN3 44 P-B4 K-H2 45 Q-R1 Resigns.

- Better is first 1--N-KB3. Then 2 N-QB3 P-Q4 3 PxP NxP transposes to the game.
- 2--QxP is bad because of 3 N-QB3 Q-KR4 (if 3--Q-Q1 4 P-Q4 N-QB3 5 N-KB3 B-KN5 6 P-Q5! with a White advantage.) 4 P-Q4 P-K4 5 PxP N-QB3 6 B-KB4! B-QN5 7 P-K3 B-N5 8 B-K2! with advantage.

(Continued next page)

GAMES. CONTINUED

- c. Now White can force Black to sacrifice a pawn with 3 F-K4 F-E3 (3--N-PQ2 4 Q-R4+) 4 N-QB3 P-RP 5 P-K3.
- d. 4 F-Q4 F-KN3 is the Gruenfeld Defence main line; this is probably White's best continuation. On 4 F-K4 N-N3 5 B-B4 (F-Q4 QxP 6 QxQ N-E7+) E-K3, and Black is OK. On 4 N-E3, Black can choose between 4--F-KN3 or 4--F-QB4.
- e. Other good alternatives are 4--F-QB4, 4 --F-K4, and 4--F-KN3. The English is a maze of transpositions.
- f. 5--B-Q2 6 F-B4! F-QB4 7 E-N2 B-E3 8 N-E3 with advantage.
- g. White needs to chase the Q right now with 11 N-K1, though after 11--Q-N3, Black would still have the edge.
- h. Black probably ought to grab the pawn with 16--N-B6+.
- i. Here 17--QxEP would give Black something for his old age, in case the attack peters out.
- j. Too far out of action. Better 27 --Q-R4 28 B-Q2 Q-Q4 and Black should win the ending easily.
- k. Black has been drifting along aimlessly for several moves, and now makes an error. He would still have an edge after R/3-Q2.

CROSSTABLES OF THE SPARTANBURG CHAMPIONSHIP

Player	Result against:	1	2	3	4	5	6	7	8	Total
David Williams		-	1	1	0	1	1	0	1	5-2
W. G. Hopkins		0	-	x	x	x	0	0	0	0-4
Ross Klatte		0	x	-	0	x	1	0	1	2-3
Spencer Mathews		1	x	1	-	1	1	1	1	6-0
Norio Schenkel		0	x	x	0	-	x	0	1	1-3
James Carlisle		0	1	0	0	x	-	0	0	1-5
Harold Bush		1	1	1	0	1	1	-	1	6-1
Everette Owens		0	1	0	0	0	1	0	-	2-5

(Games marked "x" were unplayed.)

BELLIN-BUKIC (Continued)

Bukic (Black) played 58--K-Q2(?) and lost: 59 R-R8 P-B6 60 R-N8 P-B7 61 RxR P-B8(Q) 62 K-N8 Q-Q8 63 P-B8(Q) QxR+ 64 Q-N7+ QxQ+ 65 KxQ K-B2 66 K-B7 K-N3 67 K-K7 K-B4 68 K-K6 K-N5 69 KxP KxP 70 K-B5 Resigns.

It was subsequently determined that Black could not save it with 60--R-QB5, either: 61 K-N7 R-N5+ 62 K-R7 R-R5+ 63 K-N6 P-B7 64 P-B8(Q) R-N5+ 65 K-R5 RxR 66 Q-B7+.

Is there a way for Black to avoid these lines? Consider further, then turn to page 12.

THE EDITOR'S NOTES

Plans are being made for South Carolina's first Postal Chess Championship, at the initiative of David Williams and Don Lemaster. Details will be announced in our next issue. Any suggestions or questions should be sent to Lemaster, 1471 Pine St., West Columbia, 29169.

Lemaster also reports that the mailing labels on this issue are printed (for the first time in many years) with the SCCA expiration date. The first two numbers are the month; the second the year.

Also with regard to this year's State Championship, plans are being made for the possible publication of a Tournament Book.

As we go to press a national election is being contested by the USCF for a seat on its Policy Board. The two candidates, Harold Winston and Helen Warren, are both experienced organizers from the state of Illinois who have (unfortunately) found themselves on opposite sides of the political fence for some years now. In a race like this personality and associations take on a major role, but some of the acknowledged issues may be of interest to our membership. Winston has led the fight in years past to make it easier for small organizers to get their events announced in *Tournament Life*; Warren deplores this, claiming that it uses up space that should be used for articles, features, etc. Winston responds to the pleas of masters for more financial support with the general philosophy that as interest in chess grows, masters will benefit. Warren wants to give them more direct support from USCF funds, which mainly come from membership dues. The race is believed to be close, and both candidates have enlisted the help of many friends in their campaigns.

These two issues have been of great interest to me for a long time, and I would like to invite comments from the SCCA membership. It is my impression that maximum coverage of coming events in *Tournament Life* benefits the player even more than the organizer, and I have welcomed efforts by Winston and others to ensure this. I also believe that few USCF members are interested in seeing more of the Federation's money go to masters. However, there are counter-arguments, and both issues are very subjective. How do you feel? Tell us!

A new organization "CARI" (Chess and Amateur Radio International) has been formed to promote the playing of chess via amateur radio. CARI is publishing a periodical newsletter. Inquiries should be sent to John Dould, 4 South Athol Rd., Athol, MA 01331.

The listing below of South Carolinians active in USCF postal chess was compiled for us by David Williams. He writes that he was surprised by the number of South Carolina postal players! We should have a good State Postal Tournament! (See the Editor's Column.)

USCF POSTAL RATINGS OF SOUTH CAROLINA CHESSPLAYERS

1 Mickey Bush	1530	34 Manfred McGinniss	924
2 Charles Braun	1440	35 Kenneth Bell	900
3 Frederick Bates	1392	36 Doyle Day	898
4 Peter Mariolis	1386	37 David Erb	886
5 John Crawford	1372	38 Robert Moorer	884
6 D.M. Scott	1364	39 Kenneth Clark	846
7 David Williams	1360	40 James Fleming	826
8 Joseph Zeimetz	1304	40 John Grinwade	826
9 James Canitz	1288	42 Edwin Tobias	812
10 Robert McCrary	1258	43 Ronald Rutledge	796
11 James Hyatt	1252	44 Frederick Russell	790
12 Claude Corbett	1224	45 Anthony Dahl	784
13 Samuel Playfair	1200	46 Dennis Williams	780
14 Benjy Hawthorne	1156	47 William Westmoreland	738
15 Winston Reed	1146	48 Geoffrey Alexander	706
16 Darryl Ferguson	1132	49 Gerhard Torbahn	700
17 Stephen Clark	1128	50 Arturo De Nicholas	692
18 Robert Miller	1124	51 Timothy De Wees	670
19 Rip Blackstone	1090	52 Craig Stanton	668
20 Ralph Martin	1082	53 Lee Westbrook	664
21 William Bland	1068	54 Leroy Lewis	650
22 Stephen Davis	1032	55 August Mahon	634
23 Virgil Smith	1028	56 Mitchell Freeman	604
24 Mikell Johnson	1014	57 Romeo Conde	600
25 Robert Smith	986	57 Ronald Purvis	600
26 Paul Tinkler	984	57 Robert Randall	600
27 Gerald Prazik	968	57 Allen Richardson	600
28 Lee Sutton	954	57 Lawton Wiggins	600
29 Michael Graves	944	62 Gerald Curwin	596
29 Marion Mahaffey	944	63 Richard Neopolitan	594
31 Don Lemaster	942	64 Richard Taylor	536
32 Michael Jukofsky	940	65 George Townes	332
33 Robert Mott	932	average rating	919
		standard deviation	293

BELLIN-BUKIC (Part 3)

58--R-N4! 59 R-R8 P-B6 is said to draw for Black because his new Q will attack the White R. Does it? See p. 16.

ON BOOKS

An interesting collection of books has come to our attention this summer. Dover has sent two reprints; we have a new book from Chess Enterprises; and, lo and behold, a ghost has materialized from the past.

The ghost appeared at Cole's Book Store in Augusta. Years ago I had a 1940's vintage reprint of Staunton's "Chess Players' Handbook", circa 1850. It is a fair commentary on U. S. chess of that era to note that it was still in print and selling. Well, it is still in print, folks! Coles has republished it in paperback; but not as a historical curiosity, but straight, without comment, and they have even put their own copyright on it! Furthermore, but they have also republished Cook's "Chess Openings", which preceded MCC-1, I think. Not much edification is to be had from either one, but if you would like to look at chess of another era, find a Cole's. Actually I can only regret the way they have done the republication, for a number of people will find that they have been fooled when they thought they were buying a useful chess book.

In Cole's favor I should note that they have two more volumes that people may want. "An Illustrated Dictionary of Chess" by Brace seems to be a reasonably good effort. And Rice's "Chess Problems" deals with a subject that is timeless. Both are inexpensive paperbacks.

Also inexpensive is the latest CEI booklet, "Practical Rook Endings" by Edmar Mednis. It is a short work, not encyclopedic, but good, and I just wish I had had this book in 1953 or so. It would have been worth a few points over the years, I think. Rook endings should be studied by all players.

The two Dover offerings I present with mixed emotions. For me they are flawed, but some may like them. "The Chess Endgame Study" by A. J. Roycroft is the first of these. Subtitled "A Comprehensive Introduction", it is a mine of composed endgames of high quality. It is also one of the most maddening books I have ever encountered; I have never seen a work so in need of an editor. Example: in the beginning there is a brief exposition of the algebraic notation in which the knight is designated by "Kt"; a few pages later that piece is referred to as "G" without any explanation. The organization of the text is equally confusing. If you like endgame tactics, buy "The Tactics of Endgames" by Jeno Ban first. Then browse this one later, and don't worry too much about its strange organization.

The other Dover reprint is "Capablanca's Best Chess Endings" by Irving Chernev. My problem with this one is Chernev's adulatory tone--Capablanca is always marvelous, all-knowing, and can do no wrong.

(Continued next page)

In short, there is no critical analysis of these endgames, and rarely any indication of where the opponent might have found any drawing chances. This is true even in one case where Capa was a pawn down with maybe a pawn's worth of compensation. Still, this is good chess. But to enjoy it most enthusiastically you'd better be a Capablanca fan.

Just before going to press we received for review two books from another small chess press, "The Thinkers' Press", of Davenport, Iowa. My first impression on examining these books was that they were attractive and expensively produced. Reading the prices confirmed this. The better of the two, "Endgame Artillery", by Dr. Alex Angos, is \$9.95 for a 110-page paperback. Except for the price, I like it very much. It is a study of queen+rook endings, and is interesting and instructive, and beautifully produced. The second book is a pamphlet "The Meran and Rubenstein Anti-Meran", by T. H. Tucker. This one just doesn't have enough content for me to recommend it; it would be a good magazine article for a regional publication, but is out of place in this form. Again the publication is well done; it just wasn't worth the effort.

CROSS-TABLES: CHARLESTON CHESS CLUB CHAMPIONSHIP, 1962

1. Edward McCauley (1925)	W13 W14 W5 W3	4-0
2. Patrick Hart (1939)	W15 W7 L3 W8	3-1
3. Lindsay Blanks (1979)	W16W17 W2 L1	3-1
4. Paul Tinkler (1980)	W12 L6 W9 W7	3-1
5. Bill Brichenstein (1903)	D9 D12 W14 W10	3-1
6. David Causey (1773)	W10 W4 L1 L2	2-2
7. Robert Moore (1763)	W11 L2 W15 L4	2-2
8. Romeo Conde (1767)	L14 LF W16 W15	2-2
9. Philip Lawrence (1430)	D5 WF L4 D13	2-2
10. Dennis Salmiers (1277)	L6 WF W11 L3	2-2
11. Jerome White (Um.)	L7 W16 L10 W14	2-2
12. James Hanlon (1377)	L4 D5 L13 WF	1.5-2.5
13. Henry Cabaniss (1546)	L1 L15 W12 D9	1.5-2.5
14. Bobby Boan (1242)	W8 L1 L5 L11	1-3
15. Alvin Veronee (1571)	L2 W13 L7 L8	1-3
16. Edward Price (1471)	L3 L11 L8 Bye	1-3
17. David Monday (1577)	W18 L3 Withdrew	1-1
18. Robert Brian LaZar (Um.)	L17 LF Bye LF	1-3

BELLIN-BUKIC (Part 4)

After 58--R-N4 59 R-R8 P-B6 60 R-N8 P-B7 61 RxR P-B8(Q)
62 R-N6! how does Black save the game? It appears that
White wins in all variations!

GAMECOCK GAMBIT IV

PLAYER	PRE		POST					TOT
	ST	RTNG	RTNG	1	2	3	4	
1 HYDER, M LEE	SC	2079	2077	W16	W12	W-9	D-3	3.5
2 HILL, JIMMY	SC	1997	2014	W17	W11	D-4	W-9	3.5
3 ERB, DAVID	SC	1902	1930	W21	W18	W13	D-1	3.5
4 FUERSTMAN, LELAND	NC	2113	2124	W14	W-5	D-2	D-8	3.0
5 FLOYD, WILLIAM B	SC	1604	1668	W-7	L-4	W18	W11	3.0
6 ODOM, THOMAS S	SC	0	1877	W10	L-9	W16	W13	3.0
7 PLAYFAIR, SAMUEL	SC	0	1858	L-5	W21	W14	W15	3.0
8 POHL, KLAUS A	SC	2373	2345	L13	W10	W19	D-4	2.5
9 ABRAMS, HARRY LEE	SC	1704	1718	W19	W-6	L-1	L-2	2.0
10 MC COY, DOUGLAS L	FL	1643	1639	L-6	L-8	W20	W17	2.0
11 IBRAHIM, SHAREEF	SC	1642/4	1730	W15	L-2	W12	L-5	2.0
12 JUAREZ, ALFREDO	NC	1569	1568	W20	L-1	L11	W19	2.0
13 FERGUSON, DARRYL L	SC	1524	1588	W-8	W15	L-3	L-6	2.0
14 DISHER, GEORGE	SC	1445/12	1492	L-4	W17	L-7	W18	2.0
15 HYATT, JAMES C	SC	1781	1739	L11	L13	W21	L-7	1.0
16 BUSSEY, WAYNE A	SC	1403	1403	L-1	W20	L-6	U--	1.0
17 MC GINNISS, MANFRE	SC	1362	1349	L-2	L14	B--	L10	1.0
18 JINKS, JR HENRY	SC	1330/11	1346	B--	L-3	L-5	L14	1.0
19 STRICKLAND, ROBERT	SC	1525	1511	L-9	B--	L-8	L12	1.0
20 OSTERLIE, DALE W	SC	1030/4	1077	L12	L16	L10	B--	1.0
21 MATOS, LUIS A	SC	1353	1346	L-3	L-7	L15	U--	.0

SATURDAY SWISS #2/OPEN

PLAYER	PRE		POST				TOT
	ST	RTNG	RTNG	1	2	3	
1 BERRY, JACK J	SC	2106	2111	W-9	W-5	W-6	3.0
2 FUERSTMAN, LELAND	NC	2131	2130	W13	W-4	D-3	2.5
3 HILL, JIMMY	SC	1964	1977	W10	W-7	D-2	2.5
4 THORPE, THOMAS E	SC	1801	1800	W11	L-2	W10	2.0
5 ABRAMS, HARRY LEE	SC	1718	1729	W-8	L-1	W11	2.0
6 FLOYD, WILLIAM B	SC	1668	1673	W12	W13	L-1	2.0
7 IBRAHIM, SHAREEF	SC	1730/8	1706	X--	L-3	D-8	1.5
8 STOUDEMAYER, TULLY	SC	1406/6	1483	L-5	W-9	D-7	1.5
9 STRICKLAND, ROBERT	SC	1511	1500	L-1	L-8	B--	1.0
10 YOUNG, JACK WILLIE	SC	1219/4	1360	L-3	W12	L-4	1.0
11 OSTERLIE, DALE W	SC	1077/7	1141	L-4	B--	L-5	1.0
12 JEFFCOAT, GLEN A	SC	0	1326	L-6	L10	W13	1.0
13 JINKS, JR HENRY	SC	1346/14	1337	L-2	L-6	L12	.0
14 RANDALL, JR ROBERT	SC	0	0	F--	U--	U--	.0

CROSSTABLES OF THE "CMESS IN MAY" TOURNAMENT,
SPARTANBURG

1	MOTTONEN, JIM	NC	2279	2292	D35	W34	W12	U--	2.5
2	HARRIS, NEAL D	NC	2121	2140	D34	W35	W25	U--	2.5
3	BUSH, JR HAROLD M	SC	1902	1921	W26	W19	D-4	U--	2.5
4	WILLIAMS, MICHAEL	NC	1798	1821	W36	W20	D-3	U--	2.5
5	DE GUZMAN, ERNESTO	SC	1549	1576	D-6	W37	W16	U--	2.5
6	STRICKLAND, ROBERT	SC	1500	1518	D-5	W38	X--	L13	2.5
7	ANTHONY, JOHN C	SC	1484	1497	D-8	W32	X--	U--	2.5
8	HORTON, HERBERT T	NC	1288	1348	D-7	W17	W18	U--	2.5
9	COKER, DEAN RUSSEL	SC	0	1617	W33	D15	W23	U--	2.5
10	HADSTATE, JOHN E	SC	0	1288	B--	D22	W32	L18	2.5
11	GRAY, JR CLYDE	SC	0	1595	D15	W33	W24	U--	2.5
12	POHL, KLAUS A	SC	2325	2321	W13	W25	L-1	U--	2.0
13	BERRY, JACK J	SC	2111	2090	L12	L14	B--	W-6	2.0
14	HERMAN, STEPHAN A	NC	2040	2059	L25	W13	W35	U--	2.0
15	COLLINS, RONALD R	SC	1777/3	1719	D11	D-9	W31	U--	2.0
16	HORTON, RICHARD	GA	1463	1491	W30	W29	L-5	U--	2.0
17	LEWIS, JAMES A.	NC	1440/14	1443	L32	L-8	B--	W39	2.0
18	ORR, PAUL	NC	1284	1286	L22	B--	L-8	W10	2.0
19	ERB, DAVID	SC	1958	1933	W21	L-3	D20	U--	1.5
20	WADFORD, JR A WILD	NC	1668	1681	W28	L-4	D19	U--	1.5
21	OLMSTED, FREDERICK	SC	1638	1647	L19	W28	D26	U--	1.5
22	SMITH, JAMES M	SC	1387	1394	W18	D10	F--	U--	1.5
23	HORTON, DONALD C	SC	1182	1199	W31	D24	L-9	U--	1.5
24	COKER, RYAN C	SC	0	1290	W40	D23	L11	U--	1.5
25	WILLIAMS, WAYNE GO	SC	2076	2070	W14	L12	L-2	U--	1.0
26	FLOYD, WILLIAM B	SC	1633	1627	L-3	D36	D21	U--	1.0
27	SEKO, EMMANUEL V	SC	1600	1576	L29	L30	W38	U--	1.0
28	DE GUZMAN, JOEL	SC	1591	1582	L20	L21	W36	U--	1.0
29	AHMADIH, ANWAR	NC	1578	1574	W27	L16	F--	U--	1.0
30	GOODMAN, J.S.	SC	1538	1523	L16	W27	L37	U--	1.0
31	MIXSON, STEVAN H	NC	1409/3	1308	L23	W40	L15	U--	1.0
32	RUTLEDGE, RONALD W	SC	1193	1201	W17	L-7	L10	U--	1.0
33	ORR, PERRIN	NC	1148	1158	L-9	L11	W40	U--	1.0
34	FUERSTMAN, LELAND	NC	2125	2118	D-2	L-1	U--	U--	.5
35	HARDY, JAMES K	NC	2002	1988	D-1	L-2	L14	U--	.5
36	STOUGHTON, JOHN R	NC	1623	1597	L-4	D26	L28	U--	.5
37	HARRIS, ORVILLE B	SC	1577	1539	D38	L-5	L30	U--	.5
38	OLSCHESWSKE, P	NC	1509	1484	D37	L-6	L27	U--	.5
39	WILLIAMS, DAVID KN	SC	1910	1880	F--	F--	F--	L17	.0
40	MULLIGAN, CHRIS T	SC	1167/16	1109	L24	L31	L33	U--	.0

1982 PALMETTO CC CHAMP/SECTION 1

PRE	POST	ST	RTNG	1	2	3	4	5	6	7	8	9	TOT
1 BERRY, JACK J	SC 2070	2099	A-9	W-6	W-7	W-3	W-2	W-5	W-4	W-8	W-11	9.0	
2 ERB, DAVID	SC 1929	1902	L12	W13	W-4	H--	L-1	W-7	D-5	W-3	W-8	6.0	
3 THORPE, THOMAS E	SC 1743	1739	L10	W-9	W12	L-1	W13	W-4	W-7	L-2	D-5	5.5	
4 HYATT, JAMES C	SC 1775	1758	H--	W10	L-2	D-6	W-9	L-3	L-1	W11	W-7	5.0	
5 GERGEL, MAX G	SC 1627	1662	H--	D11	W-6	H--	W-7	L-1	D-2	U--	D-3	4.5	
6 TICHENOR, CLARENCE	SC 1367	1379	W14	L-1	L-5	D-4	H--	L-8	W-9	L-4	4.0		
7 FLOYD, WILLIAM B	SC 1610	1604	W-8	W12	L-1	W11	L-5	L-2	L-3	W-9	L-4	4.0	
8 WESTER, PAUL D	SC 1405	1418	L-7	H--	H--	L13	B--	W-6	W11	L-1	L-2	4.0	
9 JACKSON, ANDREW A	SC 1345	1354	L-1	L-3	W14	H--	L-4	B--	W12	L-7	D-6	4.0	
10 CARLTON, ROBERT E	SC 1467/7	1511	W-3	L-4	L11	D12	H--	W13	H--	U--	U--	3.5	
11 BLAND, JR WILLIAM	SC 1621	1562	D13	D-5	W10	L-7	H--	D12	L-8	L-4	L-1	3.0	
12 MC GINNISS, MANFRE	SC 1329	1362	W-2	L-7	L-3	D10	W14	D11	L-9	U--	U--	2.5	
13 STOUDEMAYER, TULLY SC	0	1406	D11	L-2	H--	W-8	L-3	L10	H--	L-6	U--	2.0	
14 VADE BUN COEUR, RI SC	0	947	L-6	H--	L-9	B--	L12	H--	U--	U--	U--	2.0	

COLUMBIA OPEN

PL	TH	POST	RTNG	1	2	3	4	TOT	
1	FUERSTMAN,LELAND	NC	2124	2124	L-7	W-6	W-8	W-3	3.0
2	WILLIAMS,DAVID KN	SC	1924	1922	W-8	L-4	W-7	D-6	2.5
3	THURMONO,TSGT RUS	SC	1779	1802	W-9	D-7	W-4	L-1	2.5
4	HYATT,JAMES C	SC	1739	1758	W10	W-2	L-3	D-7	2.5
5	AMMAUIEH,ANWAR	NC	1560	1582	D-6	L-8	W10	W-9	2.5
6	HILL,JIMMY	SC	2014	1987	D-5	L-1	W-9	D-2	2.0
7	CADE,KALPH H	SC	1648	1684	W-1	D-3	L-2	D-4	2.0
8	BLAND,JR WILLIAM	SC	1562	1573	L-2	W-5	L-1	B--	2.0
9	JUAREZ,ALFREDO	NC	1568	1549	L-3	W10	L-6	L-5	1.0
10	MC GINNISS,MANFRE	SC	1349	1332	L-4	L-9	L-5	U--	.0

Columbia News, Continued

Gamecock Gambit V. June 19: Randy Ferguson won this one with a 3 1/2-1 1/2 score, ahead of Jimmy Hill and John McCalmont, who made 3-1 each. Twelve players competed in this event at Pinehurst Park. This was Randy's first tournament for a few years, but the layoff didn't seem to bother him as he drew with Hill and defeated McCalmont.

Don Lemaster, South Carolina's most active Tournament Director, directed all the above events!

CROSTABLES OF THE MIDLANDS OPEN COLUMBIA, JUNE 5-6

Player	Result by Rounds: 1 2 3 4 5					Total
1. Jack J. Berry	W8	D4	W6	1/28	W3	4-1
2. Jimmy Hill	W9	W5	L7	W8	L6	3-2
3. David Erb	W10	D6	W4	W7	L1	3 1/2- 1 1/2
4. Williams, David Kn.	W11	D1	W3	D6	--	2-3
5. John McCalmont	W12	L2	W9	W15	W7	3-2
6. David W. Miller	W13	D3	L1	D4	W2	3-2
7. Gregory C. Risk	W14	W15	W2	L3	W5	4-1
8. Marion E. Mahaffey	L1	W11	W14	L2	W15	3-2
9. James C. Hyatt	L2	W12	L5	D13	W14	2 1/2-2 1/2
10. Harry Lee Abrams	L3	D13	L15	D14	D12	1 1/2-3 1/2
11. Wade F. Fisher	L4	L8	1/28	L12	L13	1/2-4 1/2
12. Robert H. Smith	L5	L9	L13	W11	D10	1 1/2-3 1/2
13. Martin H. Mahaffey	L6	D10	W12	D9	W11	3-2
14. Philip W. Louder	L7	Bye	L8	D10	L9	1 1/2-3 1/2
15. Wester, Paul D.	Bye	L7	W10	L5	L8	2-3

MIDLANDS OPEN - RESERVE SECTION

Player	Result by Rounds: 1 2 3 4 5					Total
1. Nelson Jones	W6	W2	D3	L4	W5	3 1/2 - 1 1/2
2. Clarence Tichenor	L5	L1	L6	W3	D4	1 1/2 - 3 1/2
3. Robert Strickland	D4	L5	D1	L2	L6	1-4
4. Manfred McGinniss	D3	L6	L5	W1	D2	2-3
5. Randy J. Louder	W2	W3	W4	L6	L1	3-2
6. James A. Canitz	L1	W4	W2	W5	W3	4-1

PROMOTING JUNIOR CHESS

The health of chess in South Carolina is dependent on an active youth chess program. A large part of our current membership first came into chess through the scholastic programs of years past. We need a vigorous program now to ensure the future.

On the following pages is the account of how scholastic chess was promoted effectively in one unpromising area. It is reprinted by permission from Chess Life where it appeared some five years ago. The current Chess Life reports that this program is still going strong! We hope it will be an inspiration to those who may be interested in working with their local school, recreation center, or youth group to get a program going!

Bill Floyd

SOME CORRECTIONS

Remember our annotation contest in the Winter issue? State Champion Jeff Smolizer wrote in with some very pertinent comments and corrections:

"At moves 20 and 21, the alternatives to the moves actually played allow White to mate by Q-E7 in both instances. Also your continuation at the end of the game had White in a mating net after 29--Gxh7 instead of 29--Rxf7. Also, if instead of 29 Rxf7, white tried 29 f-h3, then 29--Q-QB1! wins for Black. Simply, 21. f-h7 wins for White, threatening 25. f-h8(Q)-hence Black's resignation."

As the creator of much of the shoddy analysis that Jeff corrects, I can only say "amen", except to note that after 24. f-h7 Rxf 25 Bxf Q-K2 in the final position things are far from clear! --LH.

GAMECOCK GAMBIT V COLUMBIA, JUNE 19

Player	Result by Rounds:	1	2	3	4	Total
1. Jack J. Berry	W7	L4	W8	D3		2 1/2 - 1 1/2
2. Randal G. Ferguson	W8	W5	D3	W4		3 1/2 - 1/2
3. Jimmy Hill	W9	W6	D2	D1		3-1
4. John McCalmont	W11	W1	W5	L2		3-1
5. Samuel Playfair	W10	L2	L4	D6		1 1/2 - 2 1/2
6. James C. Hyatt	W12	L3	D7	D5		2-2
7. James E. Hughey	L1	W11	D6	--		1 1/2 - 2 1/2
8. Marion E. Mahaffey	L2	W9	L1	W12		2-2
9. A. Martin de Nicolas	L3	L8	W12	W11		2-2
10. Philip H. Louder	L5	--	--	--		0-4
11. Paul D. Wester	L4	L7	Bye	L9		1-3
12. Buddy Richardson	L6	Bye	L9	L8		1-3

Funding Scholastic Chess

A Philadelphia Story ©UCIC

You can't expect much success seeking funds to send kids off to California to play in a chess tournament. Other banking institutions will agree, it's not a popular activity. Should you approach Philadelphia's business community, they will tell you this sort of thing is the responsibility of the school system.

—Philadelphia Banking official, February 1977

While most scholastic activities below college level are limited to low budgets and local competition, the Vaux Jr. High School chess team went out and raised over \$10,000 in less than 60 days to fund their trip to California to play in the National Scholastic Chess Tournament.

—Newsperson, 11 o'clock TV news, May 1977

By Al Mills

Every scholastic chess coach in the country can identify with the frustration experienced by coaches Mike Sherman and Steve Shutt of Philadelphia when they realized that the site for the National Scholastic Championship this year would be San Clemente, California. Both coaches had devoted many hours of their free time tuning and developing a crack team of young chess players. Steve Shutt, coaching at the Douglass Elementary School, and Mike Sherman, at Vaux Junior High School, were eager to pit their teams against a higher caliber of competition, but after calculating the cost of transporting twelve children and four adults the 3000 miles from the East Coast to the West Coast it looked as if they would have to pass up this opportunity. By the time they rounded out the budget, covering all the peripheral necessities and less visible expenditures, both coaches were completely deflated.

The two inner-city schools are neighbors. Six years ago Steve Shutt, math teacher at Douglass Elementary School, began stimulating interest in chess when he introduced the game as an extracurricular activity in the lower grades. Immediately his program was successful; as each of his chessplaying students graduated to junior high they entered Vaux with a background and skill that was sustained and further developed by Mike Sherman and his assistant Otis Burgess, a community volunteer. This unique feeder system between Douglass and Vaux has, over the past three years, been so effective that the two schools have dominated all Philadelphia scholastic competition. Next year, for the first time, this remarkable feeder system will be extended when Ben Franklin High receives the graduates of the Vaux Action Chess Team. It appears certain that within the next two

years all scholastic chess activity in the Philadelphia area will be dominated at every level by the Douglass, Vaux, and Franklin teams, all located within a two-mile radius.

Keep in mind that while the two coaches were "California dreaming" only a few individuals in the entire city of Philadelphia were aware of this six-year period of concentrated growth in scholastic chess activity initiated by Steve Shutt. No one seemed to be aware of its existence, and with less than one hundred dollars in the chess team fund, neither coach Sherman or Shutt had any hope of getting their teams to California.

Mike Sherman made several exploratory journeys into the business community to seek funding, but each time he was escorted to the door with good wishes and a recommendation that he either take this matter to the school board or maybe next year start up a football team. Most banking institutions and businesses, many of which might have funded more physical scholastic activities, looked upon chess as being an insulated elitist pastime, a diversion found in European reading rooms and quiet literary salons. Approaching the school board was out of the question — the Philadelphia schools were facing fiscal disaster; bankruptcy was being considered and the school board was sending pink slips to 10,000 of its teachers. It was a painful picture, not at all optimistic.

At one time or another every chess coach in the country faces a similar problem, whether it is a shortage of cash for travel to a distant tournament or lack of funding for a regional chess program. Stimulating interest in the value of scholastic chess is a universal problem, and stimulating funding to support scholastic chess is an impossible one. How is it, then, that within a period of sixty days coaches Sherman and Shutt successfully raised close to \$15,000, more than enough to transport the Douglass Elementary and Vaux Junior High School teams to California. Moreover, it permitted the twelve young teammates to extend the

Al Mills is Media Coordinator for the Vaux Action Chess Team.

length of their stay and make a ten-day cultural tour of all the highlights of Southern and Northern California, wrapping it up with a camping trip in magnificent Yosemite National Park.

Figure it out: on March 1st, two months before the California Nationals, they had in the fund \$78.00. Within the next eight weeks an average of almost \$2,000 was received each week by the two schools. Daily practice sessions had to be postponed or rescheduled to work in scheduled team appearances, luncheons, interviews in newspapers, radio and TV appearances on the ABC, CBS, and NBC affiliates in Philadelphia. How did this massive reaction come about?

The keynote of their entire effort was their intelligence. They divided their energy and effort and approached the problem from two directions. Steve Shutt went to the school and to the immediate community and gained the cooperation of teachers and parents in organizing a series of door-to-door campaigns, home and school functions, cake sales. While Steve Shutt was developing a variety of fund-raising activities, Mike Sherman returned to the business community, not to solicit funds but to enlist talent.

According to Sherman, "I am a math teacher, so is Steve Shutt. We are so close to the world of chess competition and the business of coaching that it is difficult for us to see beyond the chessboard sometimes. Our goal was California and we needed someone with the vision of Buckminster Fuller and the connections of Kissinger to carefully frame our objective and carry it through on a volunteer basis. It was by sheer coincidence I was able to find a fellow chessplayer who recognized the value of chess in education and was willing to volunteer his time and energy to shatter many of the tiresome myths surrounding chess today."

Sherman managed to enlist the cooperation of a handful of talented individuals from Philadelphia's business community. It was their volunteer effort, combined with the efforts of parents, teachers, school administrators, and Police Officer Randy Urquhart, that put the 3000-mile trip to California within reach.

The most recent and most attractive achievement of the Douglass and Vaux chess teams was that both had defeated all their competition at the North American Scholastic Tournament held in Manhattan over the Christmas holidays. Douglass Elementary and Vaux Junior High were, in

their own divisions, the North American Champions. Unfortunately, not enough people were aware of this distinction. A carefully structured outline of events was proposed that would not only make the entire Philadelphia area aware of this achievement but also change some people's minds about chess. The three steps necessary to bring this about and meet the goal deadline were:

- 1) to attract and sustain media interest
- 2) to gain the acknowledgement and support of municipal government
- 3) to involve the community in every effort

Composer Milt Buckner, who had recently returned from a European tour with Lionel Hampton, was asked to do a benefit for the Philadelphia chess teams. Impressed with their achievement, he agreed, but he suggested that the benefit be done on two consecutive nights and the proceeds of both go to the California goal. This benefit, the first major fund-raising event in which the media would be involved, would prove to be pivotal in creating a general awareness throughout the city.

Immediately press releases were sent out to every newspaper and radio and television station, posters were designed and distributed describing the Milt Buckner Benefit, public-interest announcements were arranged and copy was carefully written and hand-delivered to each radio and TV station. The first evening of the benefit attracted so much attention through newspapers and repeated spot announcements on so many radio stations that the local CBS-TV affiliate, WCAU-TV, called the school the following morning and politely demanded, in the interest of their responsibility to their viewers, that they be given permission to enter the school grounds with their camera and sound equipment and interview the Vaux Action Chess Team for the 7 o'clock news. They had had no idea Philadelphia was so active in scholastic chess. This unique story would be perfect for their community interest slot.

It was recommended to the TV News team that they open the segment with the Vaux team playing basketball and then cut to the contrasting tranquility of a chess practice session. They agreed to focus on the physical and the cerebral contrast, and that evening on the news the two activities were paralleled in an entirely visual opening statement. It was effective, and its impact was immediate. That single TV segment eliminated many psychological obstacles in the minds of many; it took the game of chess out of the 19th-century salon and clearly described it as an activity enjoyed by a group of well-balanced American teenagers. This image remains. Many Philadelphians still recall the Vaux Action Chess Team as being "the kids on TV who play basketball too."

The second evening of the benefit was an even greater success. The total expenditure for the two evenings had been under \$50 and the team realized almost \$1,000. However, the real value was in having created an opportunity to saturate local media. Each announcement was carefully designed to reach the eyes and ears of the business community, churches, civic groups, foundations, and fraternal organizations. Now, according to plan, all would be better prepared to respond and contribute to what had become a visibly worthwhile cause.

During the first week in March large amounts of money began arriving at the school. President and Mrs. Carter sent a letter congratulating the team on their having won the North American Championship. While Governor Shapp was having a citation prepared in Harrisburg, Philadelphia officials expressed their desire to prepare a municipal acknowledgement that would precede the citation from the State Capitol. Immediately the City Council prepared two separate resolutions for the Vaux and Douglass teams. Each resolution would be delivered in a formal ceremony on the floor of the City Council chamber.

Although almost three months had passed since the teams had won the North American Championship, city officials felt they had made a unique discovery. The first resolution, given to the Vaux Junior High chess team, received broad media coverage, and, since this acknowledgement was of community interest, the local NBC-TV affiliate, KYW-TV, aired the event and made mention of the California goal on the evening news. Following the leadership demonstrated by the City Council, many business and civic organizations were anxious to be recognized as among the first contributors to the California goal.

To reinforce and sustain this enthusiasm, each member of the City Council was invited to compete in a public chess match with the Vaux Action Chess Team. The match would be held on neutral ground; the President of John Wanamaker Stores had offered the store's main auditorium as the site. Six members of the City Council, secure enough within themselves not to be intimidated by their 13- and 14-year-old opponents, agreed to enter the competition.

The John Wanamaker Stores provided massive newspaper advertising announcing the event, and, to the surprise of the Vaux team, they also provided each member of the team with a blazer and color-coordinated outfit to be worn at public appearances and during their trip to California.

The City Council-Vaux Junior High chess match was enormously successful. The David and Goliath confrontation attracted the attention of all of Philadelphia's major newspapers and NBC's Philadelphia affiliate, WPVI-TV. At this point the spirit of the entire city of Philadelphia was behind the two young teams. By May 1st the two teams had raised close to \$15,000. On May 4th the Douglass Elementary and Vaux Junior High chess teams flew to California to play in the National Scholastic Tournament.

Commenting on the Vaux-Douglass participation, one California official said, "When the two Philadelphia teams walked through that door like a string of first string athletes, we knew they had come to California to win."

Both coach Sherman of Vaux and Shutt of Douglass saw to it that each member of their teams received a balanced mix of physical, mental, and emotional tuning to prepare them for each day of competition: plenty of sleep, well-balanced meals, and periods of vigorous exercise. Mary Sherman, traveling with the team at her own expense, enforced the "no junk food" rule and encouraged the internal reinforcement of daily meditation. It worked. After two days of competition the Vaux Action Chess Team emerged the National Junior High School Champions, and the Douglass team placed second in the Elementary division.

The City of Philadelphia rejoiced in the achievement of both teams. After a ten-day tour of Northern and Southern California the Vaux and Douglass teams returned to a welcome normally reserved for international dignitaries. Mayor Rizzo arranged an airport reception attended by city and state officials and the Police and Firemen's Band. As the two teams stepped onto the airfield the cheers from the crowd were deafening. Newspaper reporters and camera crews representing all three TV networks were on the scene to report on the unprecedented acknowledgement being given to twelve young chess players. That's right, chess players.

During the reception and ceremony the first public announcement was made describing the "Satellite Chess Competition." The Vaux Action Chess Team had early in the year extended an invitation to six Soviet children to compete in the first Satellite Chess Competition between Philadelphia and Moscow. Specifically designed for children ages eleven to fifteen, a series of eighteen Satellite Chess Competitions are planned, enabling young chess players all over the country to communicate, compete, and share a mutual interest in chess with children in all parts of the world. Each of these international competitions, conducted by telephone satellite, eliminate costly travel expense and any need for the children to miss a single day in the classroom. The State Department was waiting for a commitment on a date from Moscow, but to all attending the reception it was apparent that a new international goal had surfaced for the Vaux Action Chess Team.

Media in general covered the Vaux-Douglass story from every angle, a documentary film profiling the two teams is nearing completion, and a *New York Times Sunday Magazine* article (June 19, 1977) described a "Championship Season." But until now no mention has been made of how coaches Sherman and Shutt were able to rid scholastic chess of its inferiority complex, alter its image, and change an entire city's mind about the value of chess in education.

The intelligence and imagination that made the Philadelphia strategy work so effectively in a period of sixty days should demonstrate to every scholastic chess coach in the country that given some thoughtful direction and a bit of tasteful audacity people are just as prepared to support your scholastic chess program as they are prepared to support football.

CROSSTABLES, "THE ED'S HOT HERE SECTIONALS", June 13, Charleston.

Section 1:

1. Lindsay Blanks	1897	L4	L2	LF	0-3
2. Paul Tinkler	1992	L3	Q1	W4	2-1
3. Doug Taffinder	1903	W2	L4	WF	2-1
4. Patrick Hart	1963	W1	W3	L2	2-1

Section 2:

1. Edward Price	1453	W2	W5	W3	3-0
2. Lee Westbrook	1610	L1	W6	WF	2-1
3. Robert Moorer	1793	W5	D4	L1	1 1/2-1 1/2
4. Henry White	1569	W6	D3	LF	1 1/2-1 1/2
5. Henry Cabaniss	1543	L3	L1	W6	1-2
6. Michael Lewis	Unr.	L4	L2	L5	0-3

TOURNAMENT ANNOUNCEMENTS

EDITOR'S NOTE: Through an agreement with North Carolina we are announcing here North Carolina tournaments that require NCCA memberships. Through a reciprocal agreement SCCA memberships will be honored. South Carolina organizers who wish to announce their tournaments in the "Carolina Gambit" published by the NCCA should contact its Editor, Robert N. Singletery, 3712 Dade St., Raleigh, NC 27612.

July 24. Saturday Swiss #3, Columbia. 3-SS, TL 40/70. Site uncertain; contact Lemaster. EF \$5 if received by 7/22, \$7 at site. \$\$ 80% of entries. Reg. 8:30-9:30 at site or in advance to Don Lemaster, address below. Rds. 10, 1:30, 5. NS, St. membership required.

July 31. Cameroock Gambit VII, Columbia. 4-SS, TL 40/70 Site uncertain; contact Lemaster. EF \$8 if received by 7/29, \$10 at site. \$\$ 80% return of entries. Register 8:30-9:30 a. m., Rds. 9:30, 12, 2:30, 6. Entries to Don Lemaster, 1471 Pine St., West Columbia 29169.

July 31-August 1. Ninth Annual Pfefferkorn Open-- Winston-Salem, NC. 3-SS at Holiday Inn, 3050 North Cherry, Marshall Expressway, W-3 27105. (Special rates for advance reservations only, Ph. 919-723-2111; \$6000 unconditionally guaranteed. Three sections: Open: open to all, \$1000,600,400; CM, Cat.1, each 400-300-200. Amateur: open to below 1800. \$700,500,350; Cat. 3, 1500-1599, 1400-1499 each \$300,200,125. Notice: open to below 1400, unrated. \$450,350,200; Cat. 5/6 \$350,250,200; Unrated 250,200,150. (No unrated may win over \$300.) EF all sections \$43 if received by 7/28, \$50 at site. Optional trophies available. Special dinner Friday night 7/30. Reg. 7-9 p. m. on 7/30, 7:30-9 am on 7/31, at site, or in advance to Dr. Alan Lipkin, Box 572, Rural Hall, NC 27045. NC or other state membership required. Rds. 10, 3, 8; 10, 4. LS.

August 14-15. Charleston Classic II At North Charleston City Hall, Room 517, Mall Drive and I-26. 5-SS, 40/100. EF \$15 by 8/7/82, or \$20 at site. \$\$ 100,75; \$50 B, \$50 C, \$50 D, \$50 E, Unr: class based on performance rating. Rds. 10, 2, 7; 10, 2:30. Reg. 9:00-9:50 at site, or in advance to Charleston Chess Club, P O Box 634, Sullivan's Island, SC 29482-0634, Ph. (803) 883-3783. LS. Accomodations available at Days Inn, I-26 and Montague. 5 Grand Prix Points Available!

September 4-6. North Carolina Open Championships, Raleigh. 3-SS, 50.2, at the Crabtree Valley Marriott Convention Center, 4500 Marriott Dr., Raleigh 27612. (This is off Glenwood Ave, at junction of I-64 and U. S. 70-50.) Two sections: Open, \$850 guaranteed in prizes: \$300,150,75, top 2000,1900,1800 each 75, \$100 bonus to N. C. Champion. Amateur, restricted to below 1800: \$750 guaranteed: \$200,100,50, top 1600,1500,1400 each 75, top 1300 or below, unrated each \$50, \$50 bonus

to N. C. amateur champion. Entry fee both sections: \$22, under 19 \$20, if received by 8/31; \$5 more at site. USEF \$38, Jr. 28. NCCA or SCCA required. Reg. 8:30-10:30 at site, rounds 12:30-6, 9-3, 9-3. Advance registrations to Robert N. Singletary, 3712 Dade St., Raleigh, NC 27612. NS. Hotel rooms \$37-40. Non-profit tournament, all profits added to the prize fund! 10 Grand Prix points available!

September 4. Carolina Pawn Wars, Columbia. 4-SS, 40/70, at USC Russell House, Room 327. EF \$8, if received by 9/2, \$10 at site. \$\$ 80% return of entries. St. membership required. Reg. 8:30-9:20; Rds. 9:30, 12, 2:30, 6. Entries: Don Lemaster, 1471 Pine St., West Columbia, SC 29169.

September 19. Midlands Pawn Push, Columbia. 3-SS, 40/90, at USC Russell House, Room 327. EF \$7 if received by 9/17, \$10 at site. \$\$ 80% return of entries. State membership required. Reg. 9-9:50, Rds. 10, 1:30, 5. NS Entries: Don Lemaster, address above.

September 25. Carolina Pawn Wars #2, Columbia. Arrangements as #1 above, advance entries by 9/23.

October 9. "Knights Moves", Columbia. Arrangements as Carolina Pawn Wars #2, advance entries by 10/7.

October 16. Carolina Pawn Wars #3, Columbia. 4-SS, arrangements as Carolina Pawn Wars above, advance entries by 10/14.

October 17. Last Chance Warm-Up, Columbia. 3-ss, 40/90, USC Russell House Room 327. EF \$5 by 10/15, \$8 at site. State Membership required, NS. \$\$ 80% return of entries. Reg. 9-9:50, Rds. 10, 1:30, 5. Entries to Don Lemaster, address above.

OCT. 22-24. SOUTH CAROLINA STATE CHAMPIONSHIP, Columbia.

5-SS at Seibels Bruce Building, corner of Lady and Bull Streets, Columbia. First prize guaranteed each section. In three sections: CLOSED (Championship), Open to SC residents, students, and military. TL 40/C. EF \$16 if received by 10/21, \$19 later. \$\$150 guaranteed, 85, 50, trophies to 1st, top Jr. Reg. 8-7:45 p. m. 10/22; Rds. 8, 9:30-3:30, 9:30-2:30.

AMATEUR, open to under 1800. TL 40/90. EF \$12 in advance by 10/21, \$15 at site. \$\$ 85, 50, 30, trophies to 1st, top C. Reg. 8-9:15 a. m. 10/23; Rds. 9:30, 3:15, 7; 9:30, 2:30.

RESERVE, open to under 1400 and unrated. TL 40/90. EF \$8 if received by 10/21, \$11 at site. \$\$ 50, 30, 20, Trophies to 1st, top E/Umr. Reg. and Rds. same as Amateur.

Prizes other than first in each section based on 25 entries per section. State membership required in all, NS. Entries to Don Lemaster, 1471 Pine St., West Columbia 29169.

State business meeting 2:15 p. m. 10/23.

October 30. Halloween Classic, Columbia. Arrangements same as Carolina Pawn Wars #2, above. Advance entries by 10/28.

GAMES, CONTINUED

JUST IN! From the World Open, a game by Dave Williams! Dave reports that he finished with 3 1/2 - 4 1/2 against seven experts and a 1976 player. Very creditable! We'd better be even more wary of Dave now!

Dave Williams (1910) vs. Steve Scannell (2111)

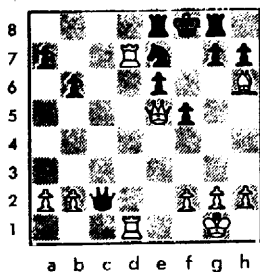
1 P-QN3 (a) N-KB3 2 B-H2 P-KN3 3 P-K3 B-H2 4 P-QB4 O-O 5 N-KB3 P-Q3 6 B-K2 P-QB3 (c) 7 O-O B-H5 8 P-Q3 QH-Q2 9 QH-Q2(?) (d) N-Q4 10 BxB KxB 11 Q-B1 NxBP 12 Q-H2+ K-H1 13 R-B2 P-K3 (e) 14 N-K4 BxN 15 RxB N-KB4 16 K-R1 P-Q4 17 N-H5 Q-B3! (f) 18 P-QB3 P-KR3 19 N-R3 P-K4 20 P-KN4 P-K5 21 R-B2 Q-R5 (g) 22 PxN QxN 23 R-KN1 Q-K6 24 B-H4! N-B3! 25 R-H3 Q-K8+ 26 R-H1 (h) Q-K6 27 BPxP NxB 28 RxN P-KB4 (i) 9 R-H3 Q-K8+ 30 K-H2(j) QR-K1?? 31 R-B1 PxP 32 RxR RxB 33 RxP KR-K1 34 R-Q2 R/1-K5 35 R-KR2 P-KR4 36 Q-R3 P-R5 37 QxP R/5-K6 38 P-KR3 (k) R-H6+ 39 K-R2 R/B-K6 40 QxP RxP+ 41 K-H2 R/R6-H6+ 42 K-H1 P-R6 43 Q-B7+ (l) Resigns.

Notes: By Williams and Hyder (H).

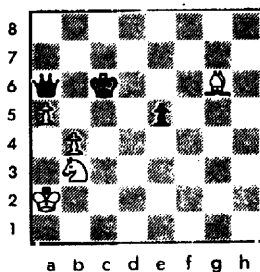
- a. A bad habit of mine is that I frequently make up stuff over the board. James Hyatt has a couple of nice wins against me to attest to this fact.
- b. Transposing to Bird's Opening.
- c. Passive. Better is P-QB3 or N-QB3.
- d. White says the k-pawn to exchange dark-squared bishops and use these dark squares to invade the king's lair. This is a gambit I've dubbed the Philly Cream Cheese Gambit--if Black mobilizes his center, White gets creamed. Actually I overlooked Black's obvious response, so the gambit is more or less forced. Black wasted 30 minutes before deciding to win the pawn. (White should have played Q-K1. (H))
- e. Weakening and passive. Black should have played QH-Q2, or any of several other good moves. (H)
- f. Finally starting some counterplay.
- g. I preferred N-Q3.
- h. Gaining a tempo.
- i. I would prefer BPxP. White cannot force a breakthrough with P-B3 readily. (H)
- j. Setting a trap into which Black falls. Black must now play PxP, after which he has some advantage; he will control the only open file, and the White INF is lost in any endgame. (H)
- k. Despite his material advantage, White must play accurately, to avoid a mating net.
- l. Two friends of my opponent watched the game and thought he was winning until Move 41! For converts to my gambit, check with Jimmy Hill; I've loaned it to him for the duration.

FIND THE BEST MOVE!!

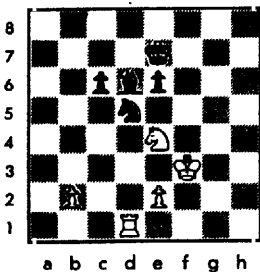
1



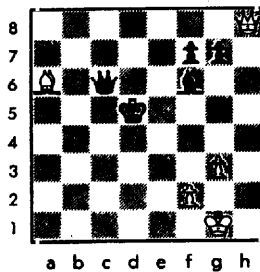
5



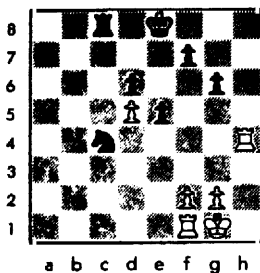
2



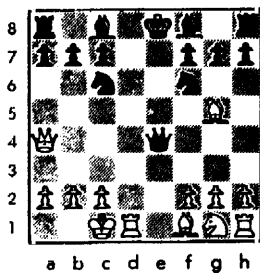
6



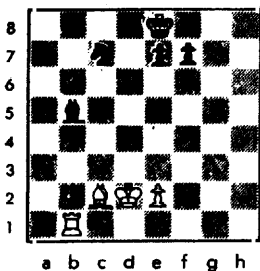
3



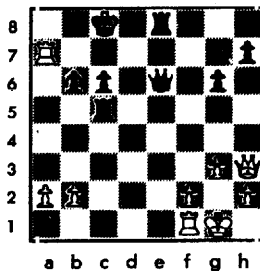
7



4



8



Reprinted from Northwest Chess. Solutions P. 31.

INTERNATIONAL CHESS NEWS

Recent events reported by "En Passant" of Pittsburgh.

19-year-old Gary Kasparov impressed once again in the very strong all-GM tourney at Bugojno (14 GMs!), and after his clear victory by $1\frac{1}{2}$ points, he will be No. 2 on the FIDE rating list. He scored five wins with White. Everyone is trying the Queen's Indian against him, but his 4. a3 is providing him with excellent results. Ljubojevic tied with Polugaevsky for 2-3. Hübner started with a loss and 8 draws, but finished with $3\frac{1}{2}$ points out of his last four games to finish in a tie with Spassky for 5-6. The veteran Najdorf went as a reporter but was drafted to fill the vacancy created when Vlastimil Hort withdrew, reportedly after a serious heart attack. Nine of the players were rated 2600+ in this Category 14 event.

A Soviet international tournament at Minsk was won by top rated Vitaly Czeschkovsky with 10½ points from 15 rounds, $\frac{1}{2}$ point ahead of Sergei Dolmatov. Bottom ranked Leonid Yudasin was clear third, with victories over Psahis, Kuzmin and Balashov. New Zealander Murray Chandley shared 4th with V. Kupreichik and L. Psahis. Murray took a clear lead at one point after reeling off six wins and two draws in a streak, only to collapse at the end with $\frac{1}{2}$ - $3\frac{1}{2}$. Yusupov and Balashov, who will be playing in the Mexico Interzonal later this summer, only finished in the middle and lower half. At one point, an announcement was made that Mexico City was unable to finance the Interzonal and that it had been rescheduled for Iceland in September, but arrangements were completed and play will take place in Toluca, Mexico.

Hort won the Dortmund Grandmaster tournament with $8\frac{1}{2}$ - $2\frac{1}{2}$ ahead of Soviet GM Oleg Romanishin. Lev Psakhis, making one of his early international appearances, was third at 7½, perhaps sufficient to secure his GM title. It was a category 10 event.

At the annual Sarajevo tourney, GM Alexander Beliavsky finished ahead of Yugoslav GM Vladimir Kovacevic at $12\frac{1}{2}$ - $2\frac{1}{2}$.

GM Artur Yusupov scored a major victory by winning the Zonal Qualifying tournament at Erevan with $1\frac{1}{2}$ - $4\frac{1}{2}$, ahead of Lev Psakhis and Vladimir Tukmakov, half a point back. Veteran GM Efim Geller was fourth, and these four will play in the Interzonals as a result. Obviously Geller at age 57 continues to surprise those who felt he would be unable to hold his own against the younger players. He defeated both Psakhis and Tukmakov and drew with Yusupov!

The Phillips and Drew Kings tournament in London this year is being called by some the strongest event ever for England. A final surge by World Champion Karpov allowed him to catch Sweden's Ulf Andersson at $8\frac{1}{2}$ - $4\frac{1}{2}$. Karpov won four of his last five games, losing to American GM Yasser Seirawan, the first win by an American over the reigning world champion in regular tournament play since 1937. After a slow start, Yasser rang up six victories on his way to clear Third place. Andersson shared first place last year with Korchnoi. The four way tie for Fourth included Ljubojevic, Portisch, Timman, and Miles. Former world champion Spassky's eighth place testifies to the strength of the event. It was a category 14 event with 12 GMs and 2 IMs. The simultaneous Phillips and Drew Knights event was won by John Fedorowicz and Bill Watson. Formanek and Kopec were in a tie for 8th. The Timman-Portisch Queen's Indian was selected as the Brilliance Prize winner: 1 d4 Nf6 2 c4 e6 3 Nf3 b6 4 g3 Bb7 (Currently regarded as most solid perhaps is 4...Ba6) 5 Bg2 Be7 6 0-0 0-0 7 d5 (One of the two fashionable pawn sacs in the Queen's Indian at the moment) 7...ed 8 Nh4 e6 9 cd Nxd5 10 Nf5 Bf6 (A Portisch patent) 11 Re1 (An innovation discovered at the board) 11...Ba6 12 e4 Ne7 13 Ne3 Be5 14 Ng4 Be7 15 e5 d5 (This leads to disaster. Better, though still hardly comfortable, is 15...d6) 16 Bg5 Bc8 17 Nf6+ (If now 17...zf 18 Bxf6 followed by Qd2 or Qh5 and Qh6) 17...Kh8 18 Ne3 Na6 19 Nfxd5! (An elegant combination which destroys Black's position. He has too many pieces hanging, for example on a8 and e7) 19...cd 20 Nxd5 Be6 (Black could have resigned already) 21 Bxe7 Qd7 22 Nxc7 Qxc7 23 Bd6 Qc4 24 Bf1 1-0. Notes by GM Ray Keene from the tournament bulletin.

SOLUTIONS (From p. 29)

1 Qf6 mate. 2 1. Nxd6 Kxd6 2 e4 3 1 Rh8+ Kd7
 2 Rxc8 Kxc8 3 Rc1 4 1. Rxb5 Nxb5 2 Ba4 5 1 b5+ and
 if Kxb5 2 Bd3+; or if 1--Qxb5 2 Be8+. 6 1 Bb7 Qxb7
 2 Qh1+ and 3 Qxb7. 7 Rd8+ Kxd8 2 Qxe4 8 1 Re1 and if
 1--Qxh3 2 Rxe8mate, or if 1--Re5 Rxe5.
 Our thanks to Northwest Chess for these.

* * * *

SOME SHORT GAMES

Philip Lawrence vs. Tyrone Webb (1981 SC Championship)
 1. P-Q4 P-Q4 2 N-KB3 P-KB3 3 P-K3 N-QB3 4 P-QB4 P-KR4
 (Consistent would be 4--P-K4 or --B-N5) 5 N-QB3 P-K3
 6 KN-R4 KN-K2 7 B-Q3 P-KN4 8 N-B3 P-QR3 9 P-QR3 PxP
 10 BxP P-QN4 11 B-Q3 Q-Q3? (--K-B2 would hold things
 together.) 12 N-K4 Q-Q1 13 NxBP+ K-B2 14 N-K4 N-B4 15
 N/LxNP+ K-K1 16 BxN PxB 17 Q-N3 B-R3? 18 Q-B7 mate.

Hyatt vs. Fisher, same event:

1 P-K4 P-K4 2 N-KB3 N-KB3 3 P-Q4 B-N5+ (out of the book
 on move 3!) 4 P-B3 B-Q3 5 QN-Q2 (B-QB4 would be more
 aggressive.) PxP 6 PxP B-N5 7 P-QR3 BxN+ 8 BxB P-Q4
 9 P-K5 P-R3 (Too slow. Better 9--Kx-K2 and 10--O-O.)
 10 P-KR3 KN-K2 11 B-Q3 O-O (B-KB4! LE) 12 Q-B2 P-KN3
 (Better N-N3. If you don't know about color weaknesses,
 watch what happens to Black on the dark squares.)
 13 B-KN5 Q-K1 14 Q-Q2 N-B4 15 BxN BxB 16 B-B6 N-Q1 17
 Q-R6 N-K3 18 N-N5 Resigns.

Price vs. Cabaniss, "The Ed's Not Here".

1 P-KB3 P-Q4 2 P-KN3 N-KB3 3 B-N2 P-K3 4 P-Q3 QN-Q2
 5 QN-Q2 P-B3 6 O-O B-Q3 7 P-B3 P-KR3 8 R-K1 N-R2? 9
 P-K4 N-B4 10 N-B1 Q-K3? 11 P-K5 B-K2 12 Q-B2 B-Q2 13
 B-K3 Q-B2 14 N/3-Q2 O-O-O 15 P-Q4 N-R3 16 P-KB4 (Better
 P-KR4) P-QB4 17 Q-RB1 P-B5 18 R-N3 B-R6 19 R-N1 PxP
 20 QxP B-K2 21 KR-B1 P-KB4 22 P-B4 Pxp?? 23 Bx1+!
 Black resigned.

Blanks vs. Tinkler, same event:

1 P-K4 P-K4 2 N-KB3 N-KB3 3 P-Q3 N-B3 4 P-KN3 P-Q4 5 QN-Q2
 B-QB4 6 B-N2 Pxp 7 Pxp O-O 8 O-O P-QR4 9 P-KR3 B-K3 10
 R-K1 Q-B1 11 P-KN4 P-R3 12 Q-K2 R-Q1 13 N-KB1 R-Q3 14
 N-KN3 Q-K1 15 P-QB3 QR-Q1 16 P-N5 Pxp 17 Bxp Q-Q2 18 K-R2
 R-Q6 19 BxN Pxp 20 N-R4 R-Q7 21 Q-R5 BxBP 22 N/3-B5 BxR
 23 N-R6+ K-B1 24 QxB Q-Q6 25 R-KB1 Q-K7 26 Q-N3 R-Q6
 27 Q-N8+ K-K2 28 N-B5+ BxN 29 RxN QxKP 30 Q-N7 Q-R5
 31 P-QB4 N-Q5 33 RxKP+ N-K3 34 R-B5?? NxQ 35 Resigns.

SCCA NEWS is published by the South Carolina Chess Association, a non-profit organization of chess players and persons interested in chess in South Carolina. The SCCA seeks to encourage and foster the playing of chess within the state. It is the recognized state affiliate of the U. S. Chess Federation for South Carolina.

Any person is eligible to become a member through payment of annual dues to the Secretary. Regular dues are \$6; Junior dues for persons 18 years of age and younger are \$3. A person may become a Patron member by payment of \$10.

SCCA NEWS is edited by Lee Hyder, 33 Longwood Dr., Aiken, SC 29801. It is printed at the Bagpipe Press, Hodges, S. C.

SCCA OFFICERS AND THEIR ADDRESSES

President: William B. Floyd, 4315 Devereaux Rd., Columbia, SC 29205.

Vice-President: Paul E. Tinkler, 1716 Pearlott St., Charleston, SC 29407.

Secretary: Don Lemaster, 1471 Pine St., West Columbia, SC 29169.

Treasurer: Marion E. Mehaffey, 1207 Memorial Park Rd., Lancaster, SC 29720.

Immediate Past President: Philip F. Jackson, 2630 Cooper Ave., Columbia, SC 29205.

Editor: Lee Hyder, 33 Longwood Dr., Aiken, SC 29801

FIRST CLASS
MAIL

SCCA NEWS
1471 Pine St.
West Columbia, SC 29169



HENRY J. WHITE
725 RUSS ST.
CHARLESTON, S.C.
29407

02/83