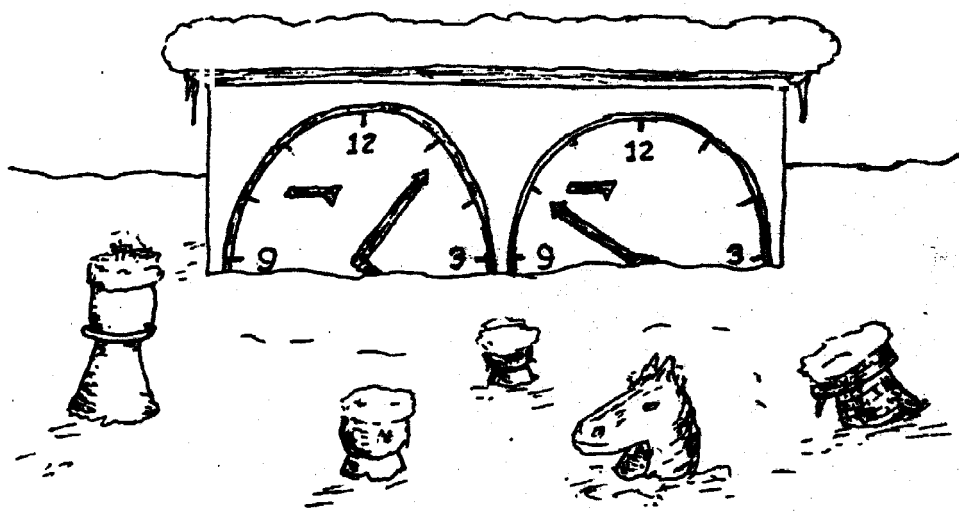
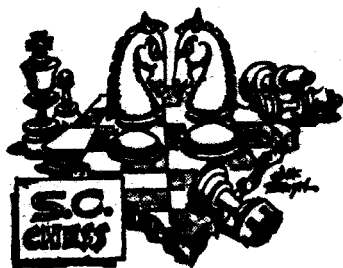


SCCA NEWS



The 11th
Snowstorm Open

JANUARY 1983
VOLUME XVIII
NUMBER 1



Charleston
1983

ABOUT THE COVER

When the Charleston players decided to have a weekend tournament in 1973, no one could have reasonably forecasted what was going to happen. January in the Port City is sometimes cold and often enough rainy, but snow? Yes, snow! Six or seven inches of the stuff, snarling traffic, turning the bridges to skating rinks, and generally doing havoc to everyone's plans. Across the state from Aiken to the Pee Dee the accumulations were much greater; eighteen inches blocked highways and caved in tin roofs. No one could get to Charleston, but the game went on! Somehow or other the players assembled and the tournament was held. In remembrance of the remarkable "hundred-year-plus" storm of 1973 the annual February tournament in Charleston has ever since been known as the "Snowstorm Open". This will be the eleventh year of the annual February tournament, making it easily the longest running tradition in the state after the State Championship.

IN THIS ISSUE

	PAGE
NEWS	3 through 7, 14
GAMES	6, 8 through 14, 17, 22, 23
CROSS-TABLES	15 through 22, 27
EDITORIAL	24 through 26
BOOKS	26
TOURNAMENT ANNOUNCEMENTS	27

POHL REGAINS THE CHAMPIONSHIP

Klaus Pohl, the state's highest rated player, regained his championship title most convincingly by winning the 1982 tournament with a perfect 5-0 score. Facing the best of the 18-player top section, Pohl went through five top opponents with only one score. Randy Ferguson, who finished clear second with 4-1, got a strong attack against Pohl but faltered late in the game and Pohl quickly struck back to win. (This game, with Pohl's commentary, is featured in this issue.) Pohl also defeated Claude Corbett, Jack Berry, Lee Hyder, and David Erb along the way to the title.

The Amateur Section of the annual S. C. Championships was won impressively by Dennis Fish, whose 4 1/2 points gained him nearly 100 rating points! He won't be back in this event next year! Others who also will deservedly be moving up will be Harry Lee Abrams and David Causey, who tied for second with 4-1. Causey lost only to Fish and defeated Abrams; Fish gave a draw to James Hyatt. This was the largest section with 20 players, and it was very hard fought. We have no fewer than six new Category I players among the more successful competitors!

Douglas Smith, an unrated participant, won the Reserve Section with a 4 1/2 -1/2 score, yielding only a draw to Manfred McGinniss. Clarence Tichenor scored 4-1 to take second. There were 12 participants in this section.

Don Lenaster directed this event, which was again held in the pleasant surroundings of the Seibels-Bruce Building. Among the amenities was a free art show consisting of the winners of the annual South Carolina watercolor competition sponsored by Seibels-Bruce.

CAROLINA PAWN WARS - Sept. 4th. Master Klaus Pohl from Greenville scored 4-0 to win this 16 player event. Close behind Pohl were John McCalmont of Shaw AFB with a 3 1/2 - 1/2 score, and Harry Abrams of Columbia with a 3-1 score. Don Lenaster directed.

MIDLANDS PAWN PUSH - Sept. 19th. Master Klaus Pohl from Greenville scored 2 1/2 - 1/2, edging out David Miller (Shaw AFB), Jimmy Hill (Columbia), and Cliff Hyatt (Columbia), each scoring 2-1. Don Lenaster directed this 10 player event.

1982 S. C. SPEED CHESS CHAMPIONSHIP

Report by Bill Floyd

Klaus Pohl won the first annual S. C. Speed Chess Championship with a score of 5-0. This tournament was held Oct. 23, 1982, in conjunction with the S. C. Closed Championship (also won 5-0 by Pohl). Ernie DeGuzman was clear second at 4-1. Pairings were in Swiss format using over-the-board ratings.

The swindle of the century occurred in Round 2 when Jim Hill actually had Pohl mated but failed to call the win, instead punching his clock. Pohl moved his king to a spot where it was still in check to Hill's Queen. Instead of capturing the king and ending the game, Hill brought his Queen up to Pohl's king and shouted "Check!". Pohl was then able to move out of check and claimed a win on time in a couple of moves.

Detailed cross-tables follow:

1. Klaus Pohl	U6	U3	U2	U5	U4	5-0
2. Ernie DeGuzman	U7	U4	L1	U10	U5	4-1
3. Jimmy Hill	U8	L1	L5	U4	U7	3-2
5. Lindsay Blanks	U10	U6	U3	L1	L2	3-2
10. Robert Bowers	L5	U8	U6	L2	U9	3-2
4. Bill Corbett	U9	L2	U7	L3	L1	2-3
6. Don Lemaster	L1	L5	L10	U9	U8	2-3
7. Bill Floyd	L2	U9	L4	U8	L3	2-3
8. J. Corbett	L3	L10	U9	L7	L6	1-4
9. Joel DeGuzman	L4	L7	L8	L6	L10	0-5

Numbers at left represent relative rankings by USCF rating.



CAROLINA PAWN WARS #2 - Sept. 25th. Master Klaus Pohl from Greenville scored 4-0 to win this event. Tied for 2nd-7th were Randy Ferguson, Wayne Williams, Paul Tinkler, Jimmy Hill, Michael Williams, and Ralph Cade, each scoring 3-1. Don Lemaster directed this 24 player event.

KNIGHT MOVES - Oct. 9th. Jimmy Hill from Columbia scored 3½-½, including wins over Klaus Pohl and Leland Fuerstman, to win this 14 player event. 2nd-3rd places were shared by Klaus Pohl and Jack Berry, each with a 3-1 score. Don Lemaster directed this 14 player event.

CAROLINA PAWN WARS #3 - Oct. 16th. David Erb of Columbia scored 4-0 to win this event, with Randy Ferguson, Michael Williams, Cliff Hyatt, and Randy McFarlane sharing 2nd-5th places with 3-1 scores. Don Lemaster directed this event which drew 13 players.

LAST CHANCE WARMUP - Oct. 17th. Jimmy Hill of Columbia scored $2\frac{1}{2}$ - $\frac{1}{2}$ to win this quad, with David Miller scoring $1\frac{1}{2}$ - $\frac{1}{2}$ for 2nd place. Don Lemaster directed.

1st COLUMBIA FUTURITY. Jack Berry won this event with a 4-1 score. A clear 2nd place went to Randy Ferguson with a $3\frac{1}{2}$ - $\frac{1}{2}$ score. Other players included David Erb, Jimmy Hill, David Miller, and John McCalmont. The players, from the Columbia area and Shaw AFB, had an average rating of about 2030!! Don Lemaster directed.

1982 HALLOWEEN CLASSIC - Oct. 30th. Jack Berry and Cliff Hyatt, both of Columbia, each scored $3\frac{1}{2}$ - $\frac{1}{2}$ to tie for 1st-2nd places in this 10 player event. Doug Smith, also from Columbia, to finish in 3rd place with a 3-1 score. Don Lemaster directed, with assistance from Leland Fuerstman.

MIDLANDS PAWN PUSH #2 - Nov. 6th. Cliff Hyatt and Randy McFarlane, both from Columbia, scored $2\frac{1}{2}$ - $\frac{1}{2}$ to tie for 1st-2nd in this event. Close behind were Doug Smith, Ibrahim Shareef, and Daniel Flanigan with 2-1 scores. The event, which drew 10 players, was directed by Don Lemaster.

SATURDAY SWISS #4 - Nov. 27th. Randy Ferguson and Jimmy Hill, both from Columbia, each scored $2\frac{1}{2}$ - $\frac{1}{2}$ to tie for 1st-2nd place in this event. Close behind were Jeff Smeltzer, Wayne Williams, and Calvin Milledge with 2-1 scores. Don Lemaster directed the 10 player event.

MIDLANDS WINTER OPEN - Dec. 4th. Jimmy Hill and Cliff Hyatt scored $2\frac{1}{2}$ - $\frac{1}{2}$ to tie for 1st in the top quad section of this event. In the open section, SCCA President Bill Floyd scored $3\frac{1}{2}$ - $\frac{1}{2}$ to win, followed by Orville Harris, Dan Flanigan, and Steedley Bogan with $2\frac{1}{2}$ - $\frac{1}{2}$ scores. The event was directed by Don Lemaster, and drew 11 players.

NEWS FROM HERE AND THERE

In Charlotte, State Champ Klaus Pohl was beaten by N. C. master Maurice Dana in the Charlotte Open--and two Category II players wound up tied for first ahead of Pohl, Dana, and several other strong players! Our own Marion Mehaffey directed the 42-player event, this past December.

In Spartanburg there were four players who earned perfect 3-0 scores in the Fall Octagonals last November 13: Ernie DeGuzman, David Erb, William Adickes of Asheville, Daniel Davis. Bill Lewin played an extra round and scored 3-1. Thirty-five players participated.

In Charleston Paul Tinkler won the top section of the "Brezhnev Memorial" November 13. He scored 3-0. In the other two sections it wasn't so clear-cut: there was a three-way tie in the second section between Peter Wludyka IV, David Causey, and Robert Moorner, and in the third section there were no fewer than four with 2-1: John Vonderlieth, James Hanlon, Philip Lawrence, and Gale Nicolet. Nicolet, starting with a loss, defeated two higher rated players.

In Lancaster John Kirby won the Fall Open with 4½; Peter Marsh Smith was second with 4. Both are North Carolina players.

Also in Lancaster the Fall Open was played in November with two Round Robin sections among the top players and players rated below 1500 respectively. Leland Fuerstman and John McCalmont, North Carolina and Pennsylvania players, tied for first in the top section. Kevin Kirby of North Carolina won the other Round-Robin.

Ralph Cade vs. Bill Floyd in a past SC Championship:

1 P-K4 P-K4 2 P-Q4 PXP 3 P-QB3 PXP 4 B-B4 P-Q3 5 N-KB3
(Better 5 NXP N-KB3) B-N5 6 NXP N-KB3 (Better N-QB3)
7 P-K5 (better Q-N3) BxN 8 QxB PXP 9 0-0 (white can
afford 9 QXP) P-B3 10 R-K1 QN-Q2 11 B-KN5 B-K2 12 QR-Q1
0-0 13 RXP??(Finally gets around to getting his pawn
back!) NXR Resigns.

Minutes - State Business Meeting.

1. President Bill Floyd called the meeting to order and a quorum was declared present.
 2. A motion was made that the minutes of the meeting stand as seconded and passed.
 3. Old Business - NONE
 4. New Business - Discussion of the date for the State Closed Championship.
 - a. A motion was made by Bill Floyd that the State Closed Championship be held the 1st weekend in November - passed by a 9-6 vote
 - b. A motion was made by Bill Floyd to certify the S.C. Voting Delegates a year in advance. This motion was passed.
 - c. A motion was made by David Causey that the date for the Closed Championship be changed to the 2nd weekend of the State Fair. This motion was withdrawn.
 - d. A motion was made by Paul Tinkler that the date of the Closed Championship be the 1st weekend of October. The motion passed by a 15-2 vote.
- Clarification regarding bids on the Closed Championship
- a. A motion was made by Bill Corbett that the State Closed Championship be held in a central location and that the bidding process be repealed. The motion was passed.
5. Nomination of Officers. All officers were re-elected to their posts:
- Bill Floyd - President
Paul Tinkler - Vice-President
Don Lemaster - Secretary
Marion Mahaffey - Treasurer
6. A motion was made that the meeting be closed - motion passed.

SIMULTANEOUS EXHIBITION IN COLUMBIA

By Bill Floyd

On Friday afternoon, October 22, 1982, State Champ Klaus Pohl played a 20-Board simultaneous exhibition at Columbia's Woodhill Mall. His opponents included 4-time former State Champ Charles Walter, and several other strong area players. Klaus scored 17-3 in the match, losing to Walter, David Erb, and Jack Williams. The event brought many new faces to the Columbia chess scene. Our thanks to Klaus for this voluntary effort.

NON POHL NON

Here is Klaus Pohl's own description of how he won the decisive game against Randy Ferguson in this year's South Carolina Championship.

The second round game between Randy Ferguson and Klaus Pohl decided the 1982 S. C. Chess Championship. Randy played well and by move 34 had achieved a winning game. In his position could be found such positional advantages as the possession of the only open file, superior minor and major pieces, the better pawn structure (weak pawns in the opponent's camp), and more space (guaranteeing piece mobility).

Since none of Randy's pieces could improve their positions, the logic of chess dictated to look for tactical motifs to convert the positional advantages into a material advantage and/or an attack on the enemy king. A tactician would have noticed two combinational themes: the white bishop's pin on black's pawn on d6 and the overworked black queen trying to protect both the rook on f8 and the bishop on c7. Therefore, the knight sacrifice on e5 suggested itself, and, after black's best reply, the destruction of the black king's pawn guard. Instead, in mild time pressure, Randy continued with a queen move that not only removed the threat of the knight sacrifice but also gave black a chance to activate one of his bishops with gain of time through an attack on the white queen. Still, due to the better pawn structure, White's position remained superior; but in the ensuing, purely tactical, skirmishes White lost the thread of the game and a bishop to boot. This completely equalized the chances. White's advanced, passed pawn would have ensured a draw had it not been for the second time control in which White threw away the game.

Pity! Should Randy complement his fine positional play (based on general strategic and specific positional principles) with tactical alertness (based on knowledge of tactical themes and detailed calculations) he would be the player to beat in next year's championship.

The game went as follows (R. Ferguson is White):
1 d4 b6 2 Nf3 Bb7 3 g3 Nf6 4 Bg2 e6 5 O-O Be7 6 c4 O-O 7 Nc3 d6 (Very passive. 7--d5 would give better chances for equality.) 8 d5 e5 9 Qc2 c6 10 Rd1 (if 10 dxc Nxc6 gives Black piece play for the backward pawn in the half open file.) 10--cxd 11 cxd Na6 (The idea is to continue with 12--Nb4 and 13--a5 gaining space. Should White try to prevent the knight sortie to b4 with 12 a3, Black rapidly deploys all his pieces by 12--Rc8 (threatening Nxd5) 13 Ne1 (13 e4 Nc5 attacking ed4, 14 Ne1 a5 and 15 b4 fails to 15--Nxe4, etc., winning a pawn) 13--Qd7 with the intention

of Nh5, f5, f4 taking the initiative.)

12 e4 Nc5 (A switch in plans. On recalculating the sequence 12--Nb4 13 Qb3 a5 14 a3 Na6 15 Be3 Nfd7 16 Na4 Rb8 17 Bxb6 Nxb6 18 Qxb6 Qxb6 19 Nxb6 I could not see how to recover the pawn or get other compensation since the bishop on b7 could not discover the rook's attack on the knight without being exchanged off by this very same knight. Had I only looked deeper into the position, I could have noticed that after 19--Nc5 --making room for the bishop and attacking e4--20 Nd2 Ba6 21 Nbc4 Bxc4 22 Nxc4 Nb3 23 Rab1 Rf8 Black would have much the better of it, if not a win. Since all the moves are more or less forced, the ten move-pair sequence should have been in the power of a 2300 player. As it is, Black is now punished.)

13. b4 Ncd7 (Black has lost two tempi, for this knight could have been at d7 three moves earlier.)

14 Bb2 Qc7 15 Qd3 Rfc8 16 Nfd2 a5 17 a3 Ba6 18 Qf3 Qd8 19 Rdc1 Ne8 20 h4 (playing the whole board) Nc7 21 Bh3 Nb5 22 Nxb5 Bxb5 23 Rxc8 Rxc8 24 a4 (The noose tightens) Ba6 25 b5 Bb7 26 Bxd7 Qxd7 (White now has the better minor pieces) 27 Qd3 g6 (What else? The active 27--Qh3 fails to 28 Nc4 when 28--Bxh4 29 Nxd6 and 30 Nxb7 wins for White due to the passed pawn.) 28 Nc4 Bd8 29 Ba3 Bc7 (White's play is soon at its peak. Already Black's black-squared bishop became the base of a pawn chain. Since White cannot immediately increase the pressure against the weak pawns on b6 and d6, to win them outright, Black set his hopes in the regrouping of his pieces to Rf8, Bc8 to support the break f5. In the meantime, White increases the pressure in the open file and on the King's wing.) 30 Rcl Rf8 31 Qe3 Qd8 32 Qh6! (This threatens 33 Nxe5. A sham sacrifice, for 33--dxe 34 Bxf8 Qxf8 35 Qxf8+ Kxf8 36 Rxc7 is out of the question. Black therefore should defend with 32--f6 and let White prove that he can find the winning continuation. After 32--f6 33 h5 g5 34 Ne3 Rf7 35 Nf5 White seems to win in all variations:

A. 35--bc8 36 Nxd6!

B. 35--Qf8 36 Rxc7!

C. 35--Bb8 36 Kg2 (not f4 at once since on 36 f4 exf 37 gxf Qe8 gives Black counterplay. After 36 Kg2 the king is ready to defend e4 sufficiently.)

36--Rd7 37 f4 Qf8 38 fxfg; or

36--Rc7 37 Nxd6

Winning in either case. It should be noted that the king move to g1 makes 36--Rc7 no valid defense for after 37 Nxd6 Rxc1 is no check and White interposes 38 Nb7 attacking the queen before capturing the rook on c1.

To me, these variations show the logic of chess. White has always one move to preserve his advantage and eventually will triumph. Accurate play is necessary though, which Randy lacked in time trouble.)

The game continued instead 32--f5(?) 33 Qg5?? (Here Nxe5 was the move. Since Black cannot accept 33--fxe seems to hold

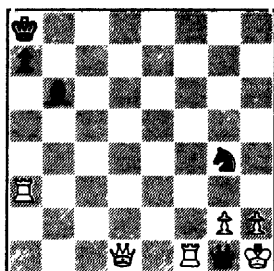
as 34--Qf6 is threatened. But White now destroys the king's guard by 34 Nxc6! winning in all variations given below, and believing in the justice of chess laws, in other variations anyone might come up with, since the superior side can always match a good move with a better one, lest my positional judgement was wrong. After 34 Nxc6 Rf6 35 h5 (poetic justice and proof of White's good play up to this position. Initially 20 h4 was played to take away a square from the black dark-squared bishop, and now it supports the attack on the enemy king. Proof of the classical axiom that good positional play is the base for any successful attack.) After 35 h5 play might have continued:

- A. 35--hxcg 36 hxcg Qe7 37 Qh7+ Qxh7 38 gxh+ Kxh7 39 Rxc7+.
 - B. 35--Bxd5 36 Qg5 with the double threat of 38 Qxd5 and Rxc7!
 - C. 35 Bb8 36 Bb2 Hxcg 37 Qg5 winning at least the exchange.
 - D. 35--Qd7 36 Qg5 winning!
 - E. 35--Bc8 36 Bb2 Bf5 37 Qg5 winning more material.)
- 33--Qd7 34 Ne3 Bd8 35 Qh6 fxe 36 h5 Rf6 37 hxcg Rxc6 38 Qh1 Bg5 39 Qxe4 Bxe3 40 Qxe3 Bxd5 41 Qxb6 (The time control is made and White is still better, especially because of his protected passed pawn on b5. Black's backward center pawns are no match.) 41--Rh6 42 Qb8+ (Not best. See note to 43rd move.) 42--Kg7 43 f3 Bf7 (Black thought long whether to force the draw with 43--Rh1+ 44 Kxh1 Qh3+ 45 Kg1 Qxc3+ 46 Kf1 Qxf3 47 Ke1 Qe3+ 48 Kf1. Of course, had White left his Q on b6, this drawing combination would have been impossible. Sensing that White wasn't up to the task, Black continued for a win despite the fact that his time was now shorter than White's.) 44 Qc8 Qa7+ 45 Kg2 Qe3 46 Rc2 Qxa3 47 b6 (White is by no means lost, due to his strong passed pawn.) 47--Rf6 48 Qg4 Rg6 49 Qe4 Qa1 50 b7 d5 51 Qh4 Qb1 52 Rc7 Qb2+ 53 Kf1 Qb1+ 54 Kf2?? (severe time trouble) Qb6+ and White resigned. White's king had only to shuttle on the white squares of f1 and g2 to prevent the worst, and if Black goes for the win with Qb6 at any time, White's Qe7 makes sure of the draw.
-

The position at the top of Page 11 is taken from the woodcut Metamorphoses II, by M. C. Escher. It is reprinted in Gödel, Escher, Bach by Douglas R. Hofstadter.

GAMES

Edited by C. E. Braun



Here's what the two top players did against former Champ Lee Hyder. First, Klaus Pohl as Black springs a nice combination, then calmly throws back the counterattack:

1 d4 Nf6 2 c4 g6 3 Nc3 d5 4 cxd5 Nxd5 5 e4 Nxc3 6 bxc3 Bg7 7 Bc4 c5 8 Ne2 O-O 9 O-O Nc6 10 Be3 Qc7 11 Rc1 Rd8 12 Qd2 Ne5 13 Bb3 c4 14 Bc2 Ng4 15 Bf4 e5 16 Bg3 Qa5 17 h3? (White keeps a little advantage with d5.) exd4 18 hxg4 d3 19 Bb1 dxe2 20 Qxe2 Be6 21 Bh4 g5 22 Bg3 Bxc3 23 e5 Bd2 24 Qe4 Bxc1 25 Qxh7ch Kf8 26 Qh8ch Ke7 27 Qf6ch Kd7 28 Rxc1 Qd2 29 Rf1 c3 30 Bf5 Rf8 31 Bxe6ch fxe6 32 Qg7ch Kc6 33 Rb1 b6 34 Qe7 Rfe8 35 Qb4 Rad8 36 Qe4ch Kc7 37 Qc4ch Kb7 38 Qe4ch Rd5 39 Qh7ch Ka6 40 Qe4 Rh8 41 Qa4ch Kb7 42 Resigns.

Randy Ferguson, on the other hand, takes the initiative as White and never lets up!

1 e4 e5 2 Nf3 Nc6 3 Bb5 a6 4 Bxc6 dxc6 5 O-O Qd6 6 d4 exd4 7 Nxd4 Bd7 8 e5 Qg6 9 Be3 O-O-O 10 Nd2 Ne7 11 Re1 Nd5 12 Qe2 Kb8 13 N2b3 Be7 14 c4 Nxe3 15 Qxe3.c5? 16 Ne2 Bc6 17 Nf4 Qg5 18 Na5 Bd7 19 Qf3 Bc8 20 Re3 Qg4 21 Qxg5 Bxg5 22 Rb3 Kc8 23 Nd5 Rxd5 24 cxd5 b5 25 Nc6 Bg5 26 Rg3 h5 27 h3 Resigns.

From the Halloween Classic of 1980, here's a game between Bill Floyd (white) and P. Mariolis.

1 P-Q4 N-KB3 2 P-QE4 P-K3 3 N-KB3 P-B4 4 P-Q5 PXP 5 PXP P=KN3 6 N-B3 B-N2 7 P-K4 O-O 8 P-Q6! R-K1 7 B-KN5 P-QR3 (a) 10 B-K2 (b) Q-N3 11 QR-N1 NXP 12 N-Q5! Q-R4ch (c) 13 K-B1! NxB 14 NxN P-QN4?(e) 15 N-K7ch RxN(f) 16 PxRch Resigns.

Notes (Mostly by Floyd);

- A waste of time. Here P-KR3 would have been good.
- 10 B-Q3 is better.
- 12--QxQP 13 N-K7ch.
- Normally this would seem sound; however, here it exposes Black to a nasty mating net.
- 14--Q-Q1 would have been Black's only chance to save anything.
- If K any, 16 NxP mate.

From the 1981 Championships, here's an upset by Jose Hector Elias, who was White against Jack Berry:

1 P-K4 P-K3 2 P-Q4 P-Q4 3 N-Q2 P-QB4 4 B-N5ch! (a) N-B3 5 P-QB4! (b) BPxP 6 N/1-B3 Q-N3 (c) 7 KPXP PXP 8 Q-K2ch K-Q1 9 PXP N-N5? (d) 10 Q-K8ch K-B2 11 N-B4 Q-B4 12 B-B4ch B-Q3 13 BxBch Resigns

Notes:

- A new move. Other moves are 4 KPXP (Best), 4 KN-B3 (good) and 4 QPXP (poor).
- If White tries to transpose into regular lines with 5 KPXP, Black can recapture with the Queen.
- Black might better try to get developed with 6--B-N5 7 NXP N-K2.
- 9--N/3-K2 was necessary.

Jimmy Hill made his presence known this fall by upsetting Klaus Fohl in the following exciting game. Fohl played White.

1 e4 e5 2 Nf6 d6 3 d4 Nf6 4 Nc3 exd4 5 Nxd4 Nc6 6 Bb5 (a) Bd7 7 Bxc6 bxc6 8 0-0 (b) Be7 9 Re1 c) 0-0 10 Bf4 Qb8 11 e5 Nd5?! (d) d12 Nxd5 cxd5 13 exd6 Bxd6 14 Bxd6 cxd6 15 Re7 Qd8 16 Qe2 Be6 17 Rb7 Bd7 18 Qa6? (e) Bc8 19 Nc6 Bxb7 20 Qxb7 Qb6 21 Ne7+ Kh8 22 Qxb6 axb6 23 Nxd5 Rfe8 24 Kf1 Rab8 25 a4 Kg8 26 Rd1 Kf8 27 Rd4 Rbc8 28 c3 Rc6 29 Rb4?! Re5 30 Nxb6 Ke7 31 c4 Kd8 32 Nd5 Kc8 33 b3 Re8 34 Rb5 Re5 35 f4 Re4 36 Kf2 Re8 37 a5 Rc5 38 Rb6 Rxa5 39 Rxd6 Ra2+ 40 Kf3 Ree2 41 Ne3 Rf2+ 42 Ke4 Rae2 43 g4 Rxh2 44 b4 Rh3 45 Rd3 f5+! (f) 46 gxf5 h5 47 b5 h4 48 Kd4 Rg3 49 Ra3 h3 50 f6 gxf6 51 Ra8+ Kb7 52 Rf8 Rgxe3 53 Rxf6 h2 54 Rh6 Re8 55 c5 Rd8+ 56 Kc3 re3+ 57 Kc2 re2+58 Kc1? re1+ 59 Kc2 h1(Q) 60 c6+ Kc8 61 Resigns.

Notes:

- Transposes into the Ruy Lopez, Steinitz Defense. The alternative is 6 Nxc6 bxc6 7 Be2 Be7 8 0-0 0-0 =.
- Best is 8 Qd3 Be7 9 Bg5 0-0 9 0-0-0 with a slight advantage.
- 9 b3 0-0 10 Bb2 Re8 11 Qd3 Bf8 12 f4 g6 =.
- Leads to weak pawns in the center.
- Returns the pawn. Better 8 Rb3.
- A fine thrust that gives Black a passed pawn.

Noorer vs. Causey

1 P-K4 P-QB4 N-KB3 N-QB3 3 B-QN5 P-KN3 4 0-0 B-N2 5 P-B3 P-QB3 6 BXXN NXXB 7 P-Q4 PXP 8 PXP P-Q4 9 N-QB3 P-K3 10 R-K1 N-K2 22 B-N5 B-N2 12 Q-R4 P-KB3 13 B-R4 Q-Q2 14 Q-N4 0-0 15 N-QR4 R-QN1 16 N-QB5 Q-B1 17 B-N3 P-K4 18 PXP B-QR1 19 Q-QB3 PXP 18 RXP N-Q4 21 Q-B1 PXP 22 BXP N-KB3 23 R-Q4 R-N4 24 R-QB4 Q-KB5 25 P-QR4 R-N3 26 B-B7 RXNP 27 QXR N-Q4 28 B-K5 BXB 29 QXB QXQ 30 NXXQ N-KB4 and resigns.

Another upset, this one from the Charleston Classic last summer. Dennis Salwierz was White against Doug Taffinder.

1 P-K4 P-QB4 2 N-KB3 P-Q3 3 P-Q4 PXP 4 NXP N-KB3 5QN-B3
 P-QR3 6 KB-B4 P-K3 7 B-KN5 B-K2 8 Q-Q2 (a) P-R3! 9 B-K3
 P-QN4 10 B-Q3 B-N2 11 P-QR3 QN-Q2 12 0-0 QR-B1 13 P-R3
 Q-B2 14 QR-B1 0-0 15 P-B4?! (b) N-B4 16 P-B5 P-K4 17 N-B3
 QNXP 18 NXXN NXXN 19 BXXN BXB 20 P-KN4 BXXN 21 RXXB Q-N2
 22 R-N3 P-Q4 (c) 23 BXP! PXB 24 QXP B-B4chd 25 K-R2 P-B3
 26 P-N5 Q-KR2 27 PXPch K-R128 Q-N7ch QXQ 29 PXXch K-N1
 30 PXR(Q)ch KXQ and White won in 25 more moves.

Notes:

- a. A good solidline is 8 B-N3 N-B3 9 0-0 B-Q2 10 K-R1 0-0 11 P-B4 P-R3 12 B-R4 NXP 13 NXXN BXB 14 NXXN BXXN 15 NXP B-K2 16 N-B4 with a slight edge due to the queen's side majority. Black now equalizes.
- b. Loses a pawn, but after 15 P-B3, white has no play.
- c. Solidifies his extra pawn. White has to move fast.
- d. On 24--KR-Q1 25 P-B6 B-B1 26 Q-N5ch K-R2 27 Q-R5ch K-N1 28 P-N5.

From the same tournament, here's a crucial game between Paul Tinkler and Lindsay Blanks. Tinkler was white.

1 P-QN3 N-KB3 (a) 2 B-N2 P-KN3 3 N-KB3 B-N2 4 P-K3 P-B4
 5 P-Q4 PXP 6 PXP P-Q4 7 P-B4 0-0 8 B-K2 N-B3 9 0-0
 P-K3 (b) 10 Q-Q2 B-Q2 11 N-B3 N-K2 12 N-K5 B-B3 13 QR-Q1
 QB-B1 14 QR-B1 (c) N-B4 15 P-B4 (d) B-R3 1 6 NXB PXB
 17 P-N3 N-Q3 18 Q-Q3 Q-R4 19 P-QR3 Q-R3 20 PXP QXQ
 21 BXXQ BXP 22 N-R4 P-N4 23 PXP BXP 24 RXXR RXXR 25 N-B5
 B-K6ch 26 K-N2 R-N1 27 K-B3 B-R3 28 B-B1 BXB 29 RXB
 KN-K5 30 P-QN4 N-Q7ch 31 K-B4 N/7-B5 32 BXXN NXB 33 R-B3
 P-QR4 34 PXP NXP 35 P-KR4 R-QB1 36 K-K5? N-B3ch 37 K-Q6
 NXP 38 K-Q7 R-R1 39 P-R4 N-B4 40 R-R3 P-K4 41 K-B6
 P-Q5 42 P-QR5 R-B1ch 43 K-N6 N-K2 (e) 44 P-R6 N-Q4ch
 45 K-N5 N-B2ch 46 R-N4 P-R4 (f) 47 P-R7 R-Q1 (g) 48
 K-B4 N-R1 49 R-N3 K-N2 50 R-N8 R-QB1?? (h) 51 RXXR N-N3ch
 52 K-Q3 Resigns.

- a. 1--P-K4! 2 B-N2 N-QB3 3 N-KB3 P-K5 4 N-Q4 P-Q4 accepts the challenge.
- b. To be considered here is development of the QB to B4 or N5.
- c. This is an admission of the "wrong rook syndrome" on the previous move. Black could now mix it up with 14--PXP 15 PXP N-K5 when white's pawn weakness would be evident.
- d. White needs to release the tension in the center with 15 PXP. Now Black could effectively play 15--PXP.
- e. 43--N-Q3 has more threat.
- f. This may be the time to remove the thorn with NXP.
- g. Better 47--P-B4.
- h. Black should have been able to hold on with R-N1.

From a 1980 tournament in Seneca, here's a game between Curtis A. Graham and Thomas L. Allen. The notes are by Graham.

1 Nf3 g6 2 g3 Bg7 3 Bg2 Nf6 4 0-0 0-0 5 c4 d5 6 cxd
 Nxd5 7 Nc3 Nxc3! 8 dxc1 Qxd1? Rxd1 Nc6 10 Be3 Bf5
 11 Nd4 Nxd4 12 Bxd4 Bxd4? (a) 13 Rxd4 c6 14 Rad1 e5
 15 Rb4 Rab8 16 Be4? Be6? (b) 17 Bc2 b5 (c) 18 Re4 f6
 19 f4 Bd5 20 Bb3! Rfd8? (d) 21 fxe Kh8? (e) 22 Bxd5
 cxd 23 Red4 fxe 24 Rxd5 Re8 25 e4 a6 26 Rd6 b4? (f)
 27 Rxa6 bxc 28 bxc Rb2 29 Rd7 Rf8 (g) 30 Raa7 Rfb8
 (h) Rxh7+ Kg8 32 Rhg7+ Kf8 33 Rxc6 Rd8! (i) 34 Rf6+
 Kg8 35 Rf2 Rb1+ 36 Kg2 Rdd1 37 Re7 Rg1+ 38 Kh3 Rb5
 39 Rf5 Ra1 40 Rfxe5 Rb2 41 Ra5 Rh1? 42 Ra8+ Resigns.

Notes:

- a. 12--Rfe8 gives Black equality because 13 Bxb7 fails to 13--Rab8 followed by 14--Rxb2. Also possible is 12--e5 followed by 13--c6.
- b. If 16--Bg4? then 17 Bxc6! or 17 Bxc6 gives white the advantage in all variations. (But 16--a5! should win for Black. CEB)
- c. Not 17--Bxa2 18 b3 winning the bishop.
- d. Loses a pawn with no compensation. 20--Bxb3 was the correct move.
- e. 21--Bxb3 still offered a chance.
- f. This attempt to free himself only succeeds in losing another pawn.
- g. Bad, but Black has little else.
- h. 30--Rff2 would draw if it weren't for the mate.
- i. This move scared me for a moment, but I quickly found the only defense.

LATE NEWS: POHL WINS S. C. OPEN; BERRY, LUCAS

WIN IN GREENVILLE

Klaus Pohl added another win to his string with a strong 5-0 score in the South Carolina Open in mid-January. Ernie DeGuzman and Leland Fuerstman tied for second at 3½-1½. David Erb and Bill Floyd were next at 3-2; Floyd's score earned him the Category I prize.

On January 21-22 Jack Berry and Jim Lucas won the Greenville News-Piedmont Grand Prix Open with 4-1, when Berry defeated Lucas in the last round. This time Pohl and DeGuzman were knocked out early and could never catch the leaders.

Details on these major events will be in our next issue.

S.C. CLOSED CHAMP/CLOSED SEC.

PLAYER	ST	PRE RTNG	POST RTNG						TOT
				1	2	3	4	5	
1 POHL, KLAUS A	SC	2306	2327	W-6	W-2	W-3	W-7	W-5	5.0
2 FERGUSON, RANDAL G	SC	2080	2111	W18	L-1	W11	W10	W-7	4.0
3 BERRY, JACK J	SC	2007	2046	W16	W-4	L-1	H--	W10	3.5
4 BLANKS, LINDSAY E	SC	1904	1955	D15	L-3	W17	W-8	W-9	3.5
5 ERB, DAVID	SC	2026	2034	D17	W13	D15	W12	L-1	3.0
6 CORBETT, III CLAUD	SC	1946	1959	L-1	W17	L12	W13	W14	3.0
7 HYDER, M LEE	SC	2084	2078	W11	D10	W-9	L-1	L-2	2.5
8 HART, PATRICK D	SC	2041	2026	W12	D15	L10	L-4	W17	2.5
9 TINKLER, PAUL E	SC	2031	2026	D13	W16	L-7	W15	L-4	2.5
10 HILL, JIMMY	SC	2031	2029	W14	D-7	W-8	L-2	L-3	2.5
11 THURMOND, RUSSELL	SC	1833	1856	L-7	W14	L-2	W16	D12	2.5
12 WILLIAMS, JIM	SC	1653	1720	L-8	W18	W-6	L-5	D11	2.5
13 BOWERS, ROBERT M	FL	1584	1675	D-9	L-5	W18	L-6	W15	2.5
14 MAHAFFEY, MARION E	SC	1884	1858	L10	L11	W16	W17	L-6	2.0
15 SMELTZER, JEFFREY	SC	2078	2036	D-4	D-8	D-5	L-9	L13	1.5
16 MOORER, ROBERT H	SC	1770	1734	L-3	L-9	L14	L11	B--	1.0
17 HANLON, JAMES D	SC	1551	1555	D-5	L-6	L-4	L14	L-8	.5
18 REED, WINSTON D	SC	1804	1780	L-2	L12	L13	U--	U--	.0

S.C. CLOSED CHAMP/AMATEUR SEC.

PLAYER	ST	PRE RTNG	POST RTNG						TOT
				1	2	3	4	5	
1 FISH, DENNIS L	SC	1757	1863	D-6	W15	W-8	W-3	W-5	4.5
2 ABRAMS, HARRY LEE	SC	1784	1814	W11	W14	L-3	W-9	W-7	4.0
3 CAUSEY, DAVID Y	SC	1754	1819	W-9	W17	W-2	L-1	W-6	4.0
4 NIX, JR ERNEST E	SC	0	1820	L17	D10	W18	W-8	W13	3.5
5 BRICKENSTEIN, BILL	SC	1798	1809	L-8	W12	W13	W-6	L-1	3.0
6 HYATT, JAMES C	SC	1847	1847	D-1	W18	W-7	L-5	L-3	2.5
7 CADE, RALPH B	SC	1745	1737	W19	D-8	L-6	W14	L-2	2.5
8 FLOYD, WILLIAM B	SC	1695	1714	W-5	D-7	L-1	L-4	W14	2.5
9 MC COY, DOUGLAS L	FL	1658	1655	L-3	W19	W16	L-2	D11	2.5
10 BLAND, JR WILLIAM	SC	1609	1603	L14	D-4	W12	L13	B--	2.5
11 VONDERLIETH, JOHN	SC	1530	1516	L-2	B--	L14	X--	D-9	2.5
12 STOUDEMAYER, TULLY	SC	1483/9	1518	D15	L-5	L10	B--	W18	2.5
13 STRICKLAND, ROBERT	SC	1467	1516	W20	D16	L-5	W10	L-4	2.5
14 CORBETT, JOSEPH S	SC	1608	1606	W10	L-2	W11	L-7	L-8	2.0
15 MC FARLANE, RANDY	SC	1747/16	1752	D12	L-1	W17	U--	U--	1.5
16 HUGHEY, JAMES E	SC	1768	1737	D18	D13	L-9	U--	U--	1.0
17 SMITH, ROBERT M	SC	1658	1662	W-4	L-3	L15	U--	U--	1.0
18 JOY, ARTHUR C	SC	1646	1615	D16	L-6	L-4	H--	L12	1.0
19 HAWTHORNE, BENJY F	SC	1594	1571	L-7	L-9	B--	F--	U--	1.0
20 DAVIS, DANIEL W	SC	1571/7	1536	L13	U--	U--	U--	U--	.0

S.C. CLOSED CHAMP/RESERVE SEC.

PLAYER	ST	PRE RTNG	POST RTNG						TOT
				1	2	3	4	5	
1 SMITH, DOUGLAS W	SC	0	1729	W11	W-2	D-3	W-5	W-6	4.5
2 TICHENOR, CLARENCE	SC	1345	1402	W12	L-1	W-9	W-4	W-5	4.0
3 MC GINNISS, MANFRE	SC	1406	1409	D-8	W-7	D-1	L-6	W-9	3.0
4 MILLEDGE, E CALVIN	SC	0	1411	L-5	W10	W11	L-2	W-8	3.0
5 CRAWFORD, JOHN N	SC	1363	1378	W-4	D-9	W-8	L-1	L-2	2.5
6 COLEMAN, ROBERT	SC	1348	1338	D-7	L-8	W12	W-3	L-1	2.5
7 INLOW, KEITH N	SC	0	1225	D-6	L-3	W10	L-8	W12	2.5
8 LUNDER, DAVID A	SC	0	1323	D-3	W-6	L-5	W-7	L-4	2.5
9 PERKINS, ROOSEVELT	SC	0	1368	W10	D-5	L-2	W11	L-3	2.5
10 HYDER, ROBERT L	SC	1140	1144	L-9	L-4	L-7	W12	W11	2.0
11 JACKSON, ANDREW A	SC	1352	1292	L-1	W12	L-4	L-9	L10	1.0
12 KAESS, JOHN F	SC	0	919	L-2	L11	L-6	L10	L-7	.0

CAROLINA PAWN WARS # 2

09/25/82

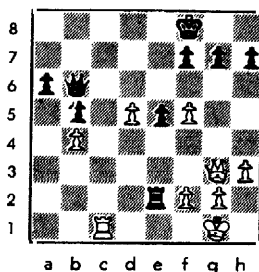
COLUMBIA

PLAYER	ST	PRE RTNG	POST RTNG					TOT
				1	2	3	4	
1 POHL, KLAUS A	SC	2296	2307	W-9	W-7	W-4	W-2	4.0
2 FERGUSON, RANDAL G	SC	2074	2082	W12	W16	W-6	L-1	3.0
3 WILLIAMS, WAYNE GO	SC	2043	2033	L10	W13	W12	W-5	3.0
4 TINKLER, PAUL E	SC	1992	1997	W14	W18	L-1	W11	3.0
5 HILL, JIMMY	SC	1983	1984	W17	W11	W-8	L-3	3.0
6 WILLIAMS, MICHAEL	NC	1822	1840	W19	W10	L-2	W-9	3.0
7 CADE, RALPH B	SC	1788	1805	W15	L-1	W10	W14	3.0
8 HUGHEY, JAMES E	SC	1764	1768	W13	W21	L-5	U--	2.0
9 MC FARLANE, RANDY	SC	1695/8	1703	L-1	W19	W21	L-6	2.0
10 MARTIN DE NICOLAS	SC	1677	1707	W-3	L-6	L-7	W16	2.0
11 IBRAHIM, SHAREEF	SC	1666/16	1658	W22	L-5	X--	L-4	2.0
12 FLOYD, WILLIAM B	SC	1652	1664	L-2	W15	L-3	W17	2.0
13 COKER, RYAN C	SC	1601	1597	L-8	L-3	W24	W21	2.0
14 ANTHONY, JOHN C	SC	1514	1533	L-4	W24	W18	L-7	2.0
15 JACKSON, ANDREW A	SC	1337	1352	L-7	L12	B--	W19	2.0
16 ABRAMS, HARRY LEE	SC	1824	1788	W20	L-2	D17	L10	1.5
17 HARRIS, ORVILLE B	SC	1584	1580	L-5	W22	D16	L12	1.5
18 WEAVER, III MARVIN	SC	1649	1625	W24	L-4	L14	U--	1.0
19 LAWRENCE, PHILIP L	SC	1464	1437	L-6	L-9	W22	L15	1.0
20 HOLMES, JAMES A	SC	1337/5	1352	L16	B--	F--	U--	1.0
21 YOUNG, JOHN WILLIE	SC	1301/11	1299	B--	L-8	L-9	L13	1.0
22 THOMAS, RODERICK P	SC	0	1169	L11	L17	L19	X--	1.0
23 WILSON, NATHANIEL	SC	1404/6	1404	F--	U--	U--	U--	.0
24 STEPHENS, JR JACK	SC	0	1188	L18	L14	L13	F--	.0

A COMPLEX POSITION

By Bill Floyd

This position arose in Floyd-Fish in the Amateur Section of the 1982 South Carolina Championships. Black has just played his 34th move. From this position White played poorly and lost, but what if he had played 35 P-Q6! ? Hours of analysis haven't yet solved all of the potential of this position. The not so obvious, but dangerous resource is 37 QxNP!. For example; 35--QxP 36 R-B8+ K-K2 37 QxNP. It appears that White wins.



CROSSTABLES: THE BREZHNEV MEMORIAL, CHARLESTON Nov. 13, 1982

Player	1	2	3	4	Score
1 Rory Cahoon 1995	x	0	0	0	0-3
2 Patrick Hart 2003	1	x	0	0	1-2
3 Paul Tinkler 1992	1	1	x	1	3-0
4 Lindsay Blanks 1833	1	1	0	x	2-1
1 Peter Wludyka IV 1550	x	1	0	1F	2-1
2 David Causey 1795	0	x	1	1F	2-1
3 Robert Bowers 1584	1	0	x	1F	2-1
4 Robert Bowers 1584	0	0	0	x	0-3
1 John Vonderlieth 1544	W4	L2	W6		2-1
2 James Hanlon 1542	W5	W1	L4		2-1
3 Philip Lawrence 1464	W6	L4	W5		2-1
4 Gale Nicolet 1451	L1	W3	W2		2-1
5 Jack Stephens 1182	L2	W6	L3		1-2
6 Alvin Nesbitt Unr.	L3	L5	L1		0-3

LANCASTER

11/20/82

FALL OPEN		PRG	POST	1	2	3	4	5	TOT
PLAYER	STR	STR	STR	1	2	3	4	5	TOT
1 KIRBY, JOHN	NC 1742	1819	A-4	A-7	A-9	A-5	A-2		4.5
2 SMITH, PETER MARSH	NC 1657	1690	A-9	A-13	A-5	A-1			4.0
3 COHEN, STEPHEN H	NC 1769	1756	L-5	A-4	L-7	A-12	W-11		3.0
4 MAHAFFEY, MARTIN M	SC 1690	1712	L-1	D-12	W-10	A-9	O-6		3.0
5 STAPP, TIMOTHY D	NC 1637	1662	A-3	A-11	L-2	L-1	A-8		3.0
6 REMAU, DAVID	SC 1468	1523	L-7	A-10	A-11	O-8	O-8		3.0
7 AHMADIEH, ANWAR	NC 1810	1844	A-6	O-1	A-3	F-1	O-1		2.5
8 CATO, TONY L	NC 1522	1551	A-14	L-3	A-13	O-6	L-5		2.5
9 RUBENIS, DJ MITRIJS	NC 1747	1723	L-2	A-14	L-1	L-4	A-13		2.0
10 HANCOTH, BUTCH E	NC 1614/10	1562	L-13	L-6	L-4	A-1	W-12		2.0
11 FUNDERBURK, AMON L	NC 1517	1528	A-12	L-5	L-6	A-13	L-3		2.0
12 LINDSAY, OPIE D	NC 1640	1609	L-11	O-4	A-14	L-3	L-10		1.5
13 EDWARDS, ALLEN SCO	NC 1494	1468	A-10	L-2	L-8	L-11	L-9		1.0
14 MARTIN DE NICOLAS	SC 1707	1650	L-8	L-7	L-12	O-1	O-1		.0

FALL OPEN/RR 1

LANCASTER

11/20/82

PLAYER	AGE	POST	ST	HT	1	2	3	4	TOT
1 FUERSTMAN, LELAND	NC 2099	1735	1	2	3	4	5	6	2.0
2 MC CALMONT, JOHN	PA 1974	1989	1	2	3	4	5	6	2.0
3 MC CARTHY, JOHN F	NC 1969	1982	1	2	3	4	5	6	1.0
4 VAN HALL, RICHARD	SC 1819	1827	1	2	3	4	5	6	1.0

FALL OPEN/RR 2

PLAYER	AGE	POST	ST	HT	1	2	3	4	5	TOT
1 KIRBY, KEVIN	NC 1458	1520	1	2	3	4	5	6	7	3.5
2 NEATHY, WILLIAM	SC 1375	1375	1	2	3	4	5	6	7	3.0
3 GHANT, RICHARD W	NC 1148/4	1176	1	2	3	4	5	6	7	2.0
4 AVANT, DENNIS	NC 1000	1007	1	2	3	4	5	6	7	1.0
5 HASIA, JARAL	NC 1067/2	1066	1	2	3	4	5	6	7	1.5

COLUMBIA

HIGHLANDS WINTER OPEN/RR

12/04/82

		HT	POST				
PLAYER	ST	HT	1	2	3	4	TOT
1 KELLY, WILLIAM S	SC	1715	1735	1-5	1-5	1-7	3.5
2 GAGGIS, GUYVILLE B	SC	1589	1596	1-7	1-5	1-5	2.5
3 FLAHERTY, JOE TEL J	SC	1521/10	1535	1-1	1-2	1-1	2.5
4 LOGAN, STEPHEN J	SC	1409/12	1408	1-1	1-7	1-1	2.5
5 HAMILTON, LEO AND	SC	1300	1300	1-1	1-2	1-1	2.0
6 A. LOGAN, JOHN L	SC	1562	1528	1-5	1-1	1-4	1.5
7 WICKSTADT, ROBERT	SC	1489	1495	1-2	1-4	1-1	1.5

HIGHLANDS WINTER OPEN/RR

PLAYER	AGE	POST	ST	HT	1	2	3	4	TOT
1 GILL, JIMMY	SC 1975	1991	1	2	3	4	5	6	2.5
2 BYATT, JAMES L	SC 1926	1951	1	2	3	4	5	6	2.5
3 WILLIAMS, ICHELL	NC 1662	1650	1	2	3	4	5	6	1.0
4 MC FARLANE, ANDY	SC 1770	1755	1	2	3	4	5	6	1.0

CAROLINA PAWN WARS #3

10/16/82

COLUMBIA

	PLAYER	PRE		POST		1	2	3	4	TOT
		ST	RTNG	RTNG						
1	ERB, DAVID	SC	1986	2026	W14	W13	W-3	W-2		4.0
2	FERGUSON, RANDAL G	SC	2082	2080	W-9	W-4	W-7	L-1		3.0
3	WILLIAMS, MICHAEL	NC	1840	1858	W17	W-5	L-1	W10		3.0
4	HYATT, JAMES C	SC	1830	1857	W15	L-2	W-6	W-9		3.0
5	MC FARLANE, RANDY	SC	1703/12	1747	W16	L-3	W12	W-6		3.0
6	HILL, JIMMY	SC	2060	2018	W10	W-7	L-4	L-5		2.0
7	ABRAMS, HARRY LEE	SC	1788	1784	W18	L-6	L-2	W14		2.0
8	CADE, RALPH B	SC	1784	1745	L12	W15	L10	W13		2.0
9	HARRIS, ORVILLE B	SC	1580	1589	L-2	W12	W16	L-4		2.0
10	ANTHONY, JOHN C	SC	1533	1558	L-6	W18	W-8	L-3		2.0
11	THOMAS, RODERICK P	SC	1169/3	1177	L13	L14	X--	X--		2.0
12	LUCARELLI, DANIEL	SC	0	1617	W-8	L-9	L-5	W16		2.0
13	IBRAHIM, SHAREEF	SC	1665	1647	W11	L-1	D14	L-8		1.5
14	FLANIGAN, DANIEL J	SC	1430/7	1484	L-1	W11	D13	L-7		1.5
15	HOLMES, JAMES A	SC	1352/6	1366	L-4	L-8	B--	F--		1.0
16	DAVIS, DANIEL W	SC	0	1378	L-5	W17	L-9	L12		1.0
17	WILSON, CATHANIFL	SC	1404/6	1336	L-3	L16	U--	U--		.0
18	NEALOUS, SHERONE	SC	0	1261	L-7	L10	F--	U--		.0

KNIGHT MOVES

10/09/82

COLUMBIA

	PLAYER	PRE		POST		1	2	3	4	TOT
		ST	RTNG	RTNG						
1	HILL, JIMMY	SC	1984	2060	W12	W-2	W-4	D-3		3.5
2	POHL, KLAUS A	SC	2307	2292	W-7	L-1	W11	W-9		3.0
3	BERRY, JACK J	SC	1993	2007	D-8	W-7	W-5	D-1		3.0
4	FUERSTMAN, LELAND	NC	2064	2070	W-6	W10	L-1	U--		2.0
5	PIETRAS, JON F	NC	1951	1950	W-9	W11	L-3	U--		2.0
6	HYATT, JAMES C	SC	1811	1838	L-4	W-8	W10	U--		2.0
7	BRICKENSTEIN, BILL	SC	1790	1798	L-2	L-3	W14	W11		2.0
8	MC COY, DOUGLAS L	FL	1624	1638	D-3	L-6	D12	W14		2.0
9	JOY, ARTHUR C	SC	1632	1646	L-5	D12	W13	L-2		1.5
10	JEFFERS, BRAD	GA	2025	1989	W13	L-4	L-6	U--		1.0
11	THORPE, THOMAS E	SC	1772	1750	W14	L-5	L-2	L-7		1.0
12	AHMADIEN, ANWAR	NC	1726	1714	L-1	D-9	D-8	U--		1.0
13	JUAREZ, ALFREDO	NC	1617	1604	L10	W14	L-9	U--		1.0
14	COLEMAN, ROBERT	SC	1360/14	1348	L11	L13	L-7	L-8		.0

1982 HALL OF FET CLASSIC

10/30/92

COLUMBIA

		PRE	POST	1	2	3	4	TOT		
PLAYER	ST	RT	IG	RT	IG	1	2	3	4	TOT
1 MURPHY, JAMES J.	SC	2100	2127	-3	-3	0-2	-4	3.5		
2 HYATT, JAMES L.	SC	1392	1926	-7	-4	0-1	-5	3.5		
3 SMITH, DOUGLAS W.	SC	1653/11	1735	L-1	-3	0-10	-8	3.0		
4 FERGUSON, LILLIAN	SC	2119	2097	-6	L-2	-5	L-1	2.0		
5 ANDERSON, ALAN	SC	1744	1739	-5	L-2	L-4	L-2	2.0		
6 STONE, FRANK, JULY	SC	1510/13	1577	L-4	-7	0-8	0-9	2.0		
7 MILLER, CALVIN E.	SC	1411/5	1520	L-2	L-5	0-9	1-0	2.0		
8 MILLER, JIMMY	SC	1995	1948	-10	L-1	0-6	L-3	1.5		
9 MADOLE, LEE V.	SC	1900	1445	L-5	L-3	0-7	0-6	.5		
10 DAVIS, DANIEL	SC	1583	1537	L-5	L-5	L-3	1-7	.0		

SATURDAY, SEPT 18/1982

11/27/82

COLUMBIA

PLAYER	ST	RT	IG	1	2	3	TOT
1 FERGUSON, DANIEL G	SC	2121	2128	-3	-4	0-2	2.5
2 MILL, JIMMY	SC	1946	1975	-10	-3	0-1	2.5
3 SMITH, JEFFREY	SC	2036	2037	-7	L-2	-5	2.0
4 MILLER, CALVIN E	SC	2033	2043	-4	L-1	-6	2.0
5 MILLER, CALVIN E	SC	1520/9	1663	-6	-7	L-3	2.0
6 SMITH, JAMES J	SC	2127	2043	L-5	1-1	1-0	1.0
7 FERGUSON, LILLIAN	SC	1711	1715	1-3	L-5	-8	1.0
8 MADOLE, LEE V	SC	1616	1614	L-1	-9	L-7	1.0
9 MADOLE, STEPHEN	SC	1654/3	1436	L-5	L-5	0-10	1.0
10 DAVIS, DANIEL RUSSEL	SC	1582/12	1468	L-2	1-6	L-9	.0

MIDLANDS PARK, FISH A2

11/06/82

COLUMBIA

		PRE	POST	1	2	3	TOT		
PLAYER	ST	RT	IG	RT	IG	1	2	3	TOT
1. SMITH, JAMES J.	SC	1931	1937	-6	0-2	-4	2.5		
2. MADOLE, LEE V.	SC	1752	1771	-7	0-1	-6	2.5		
3. SMITH, DOUGLAS W.	SC	1693/7	1653	L-4	1-0	-9	2.0		
4. MADOLE, STEPHEN	SC	1647	1665	-3	2-3	L-1	2.0		
5. FERGUSON, DANIEL J.	SC	1424/11	1521	-6	0-7	-6	2.0		
6. MADOLE, STEPHEN	SC	1394/6	1454	-5	0-9	L-2	1.5		
7. DAVIS, DANIEL E.	SC	1583/10	1597	L-2	L-5	-8	1.0		
8. STRICKLAND, ROBERT	SC	1516	1409	-10	L-4	L-5	1.0		
9. MADOLE, ROBERT	SC	1334	1340	L-1	0-6	L-3	.5		
10. MADOLE, ROBERT	SC	0	1165	L-6	L-3	F--	.0		

CAROLINA PAWN WARS

COLUMBIA

09/04/82

PLAYER	PRE		POST					TOT
	ST	RTNG	RTNG	1	2	3	4	
1 POHL, KLAUS A	SC	2305	2316	W-3	W-8	W-7	W-4	4.0
2 MC CALMONT, JOHN	PA	1962	1993	H--	W15	W11	W-7	3.5
3 ABRAMS, HARRY LEE	SC	1792	1822	L-1	W13	W12	W-8	3.0
4 FERGUSON, RANDAL G	SC	2080	2074	D10	W-9	W-5	L-1	2.5
5 MILLER, DAVID W	SC	1998	1993	H--	W10	L-4	W-9	2.5
6 MC FARLANE, RANDY	SC	1661/4	1695	D15	L11	W10	W13	2.5
7 HILL, JIMMY	SC	2005	1988	W14	W12	L-1	L-2	2.0
8 HYATT, JAMES C	SC	1813	1798	W16	L-1	W14	L-3	2.0
9 COKER, DEAN RUSSEL	SC	1351/9	1469	W11	L-4	X--	L-5	2.0
10 COKER, RYAN C	SC	1588/16	1601	D-4	L-5	L-6	B--	1.5
11 THORPE, THOMAS E	SC	1786	1768	L-9	W-6	L-2	U--	1.0
12 COLLINS, RONALD R	SC	1719/6	1682	W13	L-7	L-3	U--	1.0
13 FLANIGAN, DANIEL J	SC	1498/4	1430	L12	L-3	B--	L-6	1.0
14 COLEMAN, ROBERT	SC	1335/12	1360	L-7	X--	L-8	U--	1.0
15 IBRAHIM, SHAREEF	SC	1669/14	1666	D-6	L-2	F--	U--	.5
16 HOLMES, JAMES A	SC	1318/4	1337	L-8	F--	U--	U--	.0

MIDLANDS PAWN PUSH

COLUMBIA

09/19/82

PLAYER	PRE		POST					TOT
	ST	RTNG	RTNG	1	2	3		
1 POHL, KLAUS A	SC	2316	2310	D-5	W-4	W-2		2.5
2 MILLER, DAVID W	SC	1993	2009	W-8	W-3	L-1		2.0
3 HILL, JIMMY	SC	1988	1983	W-7	L-2	W-6		2.0
4 HYATT, JAMES C	SC	1798	1811	W10	L-1	W-8		2.0
5 ABRAMS, HARRY LEE	SC	1822	1824	D-1	L-6	W-9		1.5
6 THORPE, THOMAS E	SC	1768	1772	D-9	W-5	L-3		1.5
7 MC COY, DOUGLAS L	FL	1629	1624	L-3	D-9	B--		1.5
8 FLOYD, WILLIAM B	SC	1658	1652	L-2	W10	L-4		1.0
9 WESTBROCK, LEE A	SC	1589	1592	D-6	D-7	L-5		1.0
10 STRICKLAND, ROBERT	SC	1480	1467	L-4	L-8	U--		.0

COLUMBIA

1ST COLUMBIA FUTURITY/ROUND-ROBIN

09/23/82

PLAYER	ST	RTNG	POST								TOT
			1	2	3	4	5	6			
1 BERRY, JACK J	SC	2046	2100	*	L	W	W	W	W	4.0	
2 FERGUSON, RANDAL G	SC	2111	2121	W	*	D	W	W	L	3.5	
3 ERG, DAVID	SC	2034	2036	L	D	*	D	D	W	2.5	
4 MILLER, DAVID W	SC	1991	1999	L	L	D	*	W	D	2.0	
5 HILL, JIMMY	SC	2029	2091	L	L	D	L	*	W	1.5	
6 MC CALMONT, JOHN	PA	1993	1979	L	W	L	D	L	*	1.5	

SPARTANBURG FALL OCTAGONALS

11/13/82

	PLAYER	ST	PRE RTNG	POST RTNG	1	2	3	4	TOT
1	DE GUZMAN, SR ERNE	SC	2222	2237	224	223	1-8	U--	3.0
2	ERB, DAVID	SC	2036	2073	1-6	1-9	223	U--	3.0
3	JACKES, WILLIAM C	NC	1726	1768	119	226	110	U--	3.0
4	DAVIS, DANIEL W	SC	1547/16	1556	232	215	220	U--	3.0
5	LEWIS, BILL	SC	0	1294	115	231	228	221	3.0
6	ANDERSON, ALAN	NC	1786	1777	1-2	2--	229	214	2.5
7	FRIGHT, JOEL W	NC	1570	1595	230	213	212	U--	2.5
8	FUERSTMAN, LELAND	NC	2102	2104	225	216	1-1	U--	2.0
9	MAHAFFEY, MARION E	SC	1856	1900	233	1-2	225	U--	2.0
10	CADE, RALPH B	SC	1733	1752	234	211	1-3	U--	2.0
11	STOUGHTON, JOHN W	NC	1644	1659	227	110	226	U--	2.0
12	DE GUZMAN, JR ERNE	SC	1559	1563	235	230	1-7	U--	2.0
13	ANTHONY, JOHN C	SC	1558	1562	214	1-7	230	U--	2.0
14	FRANDON, HAROLD P	SC	1390	1394	113	2--	235	1-6	2.0
15	KILLEDGE, RONALD W	SC	1201	1227	2-5	1-4	221	U--	2.0
16	KUSH, JR HAROLD M	SC	1916	1917	229	1-6	217	U--	1.5
17	MILLIA S, MICHAEL	NC	1856	1862	123	229	216	U--	1.5
18	MILLIS, STEVEN C	NC	1667	1674	126	227	219	U--	1.5
19	CIKER, RYAN C	SC	1597	1616	1-3	234	218	U--	1.5
20	HAUSTATE, JOHN E	SC	1314/6	1283	221	228	1-4	U--	1.5
21	JOSE, BAUN, ALAN	SC	0	1090	220	232	115	1-5	1.5
22	MILLIA S, DAVID KN	SC	1961	1991	U--	U--	U--	224	1.0
23	CORRETT, JII CLAUD	SC	1959	1952	217	1-1	1-2	U--	1.0
24	CHATTRELL, ALBERT M	SC	1837	1808	1-1	125	2--	122	1.0
25	HYATT, JAMES C	SC	1837	1842	1-8	224	1-9	U--	1.0
26	CORRETT, JOSEPH S	SC	1606	1609	218	1-3	111	U--	1.0
27	SEAR, BERNARDEL V	SC	1576	1570	111	118	234	U--	1.0
28	CANEY, GORDON S	NC	0	1096	231	120	1-5	U--	1.0
29	CHATEL, KEN J	NC	1783	1760	116	117	1-6	U--	.5
30	LEWIS, JAMES A.	NC	1443	1427	U-7	112	113	1--	.5
31	MULLIGAN, CHAIS T	SC	1130	1094	128	1-5	232	U--	.5
32	CHILDS, BERRICK B	SC	254/4	971	1-4	121	231	U--	.5
33	FURL, KLAUS A	SC	2327	2306	1-9	U--	U--	U--	.0
34	DE GUZMAN, JOEL	SC	1628	1561	110	119	127	U--	.0
35	SMITH, JAMES A	SC	1394	1369	112	2--	110	U--	.0

David Erb vs. James Hyatt

1 d4 Nf6 2 c4 c5 3 d5 e6 4 Nc3 exd5 5 cxd5 d6 6 e4 g6
 7 Bd3 Bg7 8 Ng2 O-O 9 O-O Na6 10 f4 Nc7 11 Ng3 Bg4
 12 Qb3 Rxb8 13 a4 b6 14 Bd2 a6 15 h3 Bd7 16 Qd1 b5
 17 axb5 axb5 18 Qf3 c4 19 Bb1 Bc8 20 Nce2 Bb7 21 Ned4
 Nfd5! 22 Nb5 Nb5 23 exd5 Bb2 24 Ba5 Qf6 25 Ra2 Qd4+
 26 Kh1 Bd5 27 Qg4 c3 28 Nf5 Qf6 29 Ra4 Bc6 30 Nh6+
 31 f5 gxf5 32 Nxf5 Rg8 33 Qe2 Qg5 34 Rg4 Qd2 35 Qe4
 Rg4 36 hxg4 Bd5 37 Qc2 Bg2+ 38 Kg1 Qxc2 39 Bc2 Bf1
 White resigns.

EXCHANGES

Women's chess has been boring; the Russians always win. But recently some challengers have appeared: The Swedish teenager Pia Cramling and the Chinese Liu Shilan. Here are a couple of their games from the last Olympiad, courtesy of Northwest Chess. Chiburdanidze, in case you didn't know, is World Champion.

From other publications

Cramling-Liu Shilan: 1 e4 c5
Sicilian Defense 2 Nf3 Nc6
3 d4 cd4 4 Nxd4 Nf6 5 Nc3 d6 6
f4 Bd7 7 Nf3 g6 8 Bd3 Bg7 9 0-0
0-0 10 Kh1 Bg4 11 Qel Bxf3 12
Rxf3 Nd4 13 Rh3 Ng4 14 Qh4 h5
15 Nd5 Re8 16 Ne3 Nxe3 17 Bxe3
e5 18 Qf2 Qf6 19 c3 Nc6 20 f5
Rd8 21 Rg3 h4 22 Rg4 g5 23
Bg5 Qg6 24 ef5 Qh5 25 Be2 f6 26
Be3 Qf7 27 Bh6 1-0

Cramling-Chiburdanidze: 1 e4
Sicilian Defense c5 2
Nf3 Nc6 3 d4 cd4 4 Nxd4 Qb6 5
Nb3 Nf6 6 Nc3 e6 7 Bd3 a6 8 0-0
Be7 9 Kh1 Qc7 10 f4 d6 11 a3 b5
12 Qf3 0-0 13 Bd2 Bb7 14 Rael b4
15 Nd1 ba3 16 ba3 a5 17 Bc3 e5
18 Ne3 ef4 19 Nf5 Ne5 20 Nxe7+
Qxe7 21 Qxf4 Nh5 4-4

The Aesthetics of Devastation

games selected and annotated
by Edgar Lawrence



82 Cincinnati Open, Casden vs. Spencer
1 e4 c5 2 d4 cxd4 3 c3 d4xc3 4 Nxc3 d6
5 Bc4 (The standard move here is 5 Nf3.
The text can have independent significance if Wh plays f4 before Nf3.) 6 Nc6
6 Nf1 e6 7 0-0 (7 Bf4 is premature. Bl
plays 7...Be7 followed by ...e5.) 8 Nf6
8 Qe2 e6 (Bl's other major system here
begins with 8...Be7. However, neither
system really tests the Morra-Smith
Gambit. Bl is struggling just to survive
in these lines.) 9 Rd1 Qc7 (Bl can
also play 9...Qe5, but after 10 Bf4 he
needs to find a substantial improvement
on the lines in Flesch's book.) 10 Bf4
Ne5 (None of Bl's choices here is particularly
good, but development by 10...Be7 is
preferable to the text.) 11 Bxe5 (The
dogmatic retention of the B pair by 11 Bb3
is slow and Bl has excellent chances of
equalizing after 11...Bd7. "11 Bxe5 is not
just an important gain of tempo compared to
11 Bb3, but a great achievement from a
strategic point of view, for it opens the
'd' file for the rook"--Flesch.) d6xe5
12 Rael Qd8 13 Bb5+ Bd7 (13...
d6xe5 14 Nxd5 Be7 15 Nc7+ Kf8 16 Nxa8
Qxa8 17 Qe4 Wh wins. 11...Nd7 14 Qd2
d6xe5 15 Nxb5 f6 16 Nc7+ Kf7 17 Nxa8
Qxa8 18 Rxe8 Qxe8 19 Qxd7+ Wh has a won
endgame.) 14 Bxd7+ Nxd7 15 Nxb5 (Flesch's
15 Ng5 gives Wh a crushing advantage.)
16 Bc5 (Flesch rejects 15 Nb5 as being
unnecessarily risky after 15...a6b5
16 Rxd7 Kxd7 17 Qxb5+ Ke7 18 Nxe5. Wh
may have intended 16 Qxb5, but after
...Bd6 17 Nxe5 Bxe5 18 Qxd7+ Kf8, I
don't see any convincing continuation
for Wh. The text allows Wh to make a
more convincing sacrifice.) 16 Rxd7

(16 Qd3 is not so convincing after ...
Qd8: 17 Nd6+ Bxd6 18 Qxd6 Rg8
19 Nxe5 Rxc1 20 Rxc1 Nxe5 21 Qxe5 0-0
where Wh has regained the P, but it
would probably take a Grandmaster to
accomplish anything with Wh's small
positional advantage. 11 17 Rxe5 Nxe5
18 Qe2 Qb6 19 Nd6+ Ke7 20 Nxe5 where Wh
obviously has compensation for the
exchange, but is it enough to win or only
enough to comfortably hold the draw?)
Kxd7 17 Rxb5 d6xb5 18 Qxb5+ Ke7 19 Qb4
Kf6 (Since the text loses immediately,
19...Ke8 must be considered marginally
preferable. However, it offers no real
hope because it shuts in the KR, leaving
Wh a N ahead, in effect.) 20 Nxe5
Qxe5 (Bl won't be able to organize an
effective resistance in the resultant
Q vs R endgame. Still, 20...Rd8 isn't
a significant improvement. 21 g4--
threatening 22 g5--forces Bl to sacrifice
the Q because upon 21...h6 or...g6
22 Qc3 Bl has no defense, e.g., ...Ke7
23 Rc7+ Ke8 24 Nxf7. 21 f4 is also
good for Wh, but not as easy as the Q
vs R endgame.) 21 Rxe5 Kxe5 22 Qc5+
Kxe4 23 f3+ (Wh plans to win Bl's BP
without giving up his own ap.) Kd3
24 Kf2 Rael (Bl can't play 24...Rxa2
because of 25 Qc3 Mate. Bl might play
24...Rhe8 25 Qb5+ Ke2 26 Qxb7 Rxb7,
trying to capture one of Wh's Q side Ps
in return for the BP, but then Wh reaps
a harvest on the K side.) 25 Qb5+ Ke2
26 Qxb7 Rxb7 27 b4 Bb2 28 a4 Bb2+
29 Kd3 Rb6 30 a5 Bb2 31 f4 Rb2 32 Kh4
Rdd2 33 Kh3 Rb3+ 34 g3 Bdd2 35 Qxf7
Rxb2+ 36 Kf4 Bc3 37 Qxf7 h5+ 38 Kf5 b4
39 g4 h3 40 a6 Re2 41 a1 e5 42 a6d4
e5xf4 43 Qf3 Bl Resigns

COURTESY OHIO CHESS BULLETIN

THE EDITOR'S NOTES

It is a pleasure to read of chess in the popular press. A couple of articles have recently appeared in, of all places, the Wall Street Journal. Last summer they ran an article by Edmar Mednis on computer chess, and this past December 31 there appeared under "Leisure and the Arts" an article called "The Cheery Champ of Chess" dealing with Yasser Seirawan. The author, Roger Lowenstein, gives a very sympathetic and attractive picture of young Seirawan, who came closer than any other American last year to becoming a Candidate for the World Championship.

One of the exchange publications we receive is the "Ohio Chess Bulletin". Their September-October issue last year featured Rea B. Hayes, the 1982 recipient of the George Koltanowski Gold Medal for an outstanding contribution to chess. Born in Canada, Rea was for a time a South Carolina resident and won the S. C. State Championship in 1953 and 1954. The OCB notes that Hayes won TWO trophies in 1953; the tournament was run then as an open event with the highest finishing resident player taking a special trophy symbolizing the state title. Hayes settled in Cincinnati in 1957 and has lived there since; he won the Ohio Championship in 1963 and has been one of the notable chess personalities of that state for many years.

Hayes has been a chess book collector since 1936, and he has a monumental collection. He has donated this collection to the USCF, who will use it as a reference library. It includes the book published to commemorate the first international chess tournament in London in 1851. The collection is being sent to New Windsor in installments over a three year period. This remarkable philanthropy was the impetus for the award of the Koltanowski medal.

Roger Blaine's photograph of Hayes from the OCB cover is reprinted (hopefully) on the facing page.

It was a real sadness to learn of the death last October of Ed Edmondson, the former President and Executive Director of the USCF. He was a remarkable worker and builder of American chess. He got Bobby Fischer started on the path to the World Championship, and built up the USCF in the resulting chess boom that followed Fischer's triumph. Edmondson was an enthusiastic, energetic man, a builder, an consummate politician who tacked nimbly through the intrigues of U. S. and world chess. Even though he retired from any official role in national chess some years ago, his influence remained felt in the activities of the Federation.



REA B. HAYES

Former South Carolina Champ and Koltanowski Medalist

I got to know Ed in the middle 60's, and it was a real pleasure to be able to work with him on such activities as the Korchnoi-Mecking match. It is really hard to believe that he is no longer with us.

Reading through the excellent state, regional, and local magazines we receive in exchange for SCCA NEWS, we note that several of them (or the organizations that publish them) have gotten in serious financial trouble of late, and are being forced to appeal for additional funds to meet their bills. It is easy to sympathize with their problems in light of the sharp increases in costs in recent years and their desire to maintain the quality of their publications. And it is comforting to know that the SCCA has been able to live well within its budget so that we will not have to make such appeals. Our officers deserve credit for increasing the activity and size of the SCCA while maintaining the organization in a sound condition.

This is the last issue of the SCCA NEWS that I will be putting out. The demands of other interests have made it necessary for me to give up this job. I would like to thank the contributors who have made it possible to publish a newsletter representative of the entire state, especially Chuck Braun, Don Lemaster, Marion Mehaffey, Pat Hart, David Williams, Bill Floyd, and Bill Corbett. For the next issue John McCrary will be taking over as Editor, and will no doubt be getting the same kind of support from the same people, so that the quality of the publication can only improve! I hope to be able to contribute also from time to time. It has been my real pleasure to get to know most of the membership, and I look forward to seeing you all at tournaments.

--Lee Hyder

BOOKS IN REVIEW

The two libraries I have cards for occasionally get in a chess book, and so from time to time I check the shelves to see if a new one has come in. Recently I found a little gem: a game collection called "200 MODERN BRILLIANCIES" by Kevin Wicker, an English player. (The publisher is Arco of New York.) The games are a real joy to play through and a beautiful display of attacking chess. Here's one example, and I could have picked about any game:
 Platonov-Shamkovich, Leningrad, 1971.
 1 c4 g6 2 Nc3 Bg7 3 d4 d4 4 e4 Nf6 5 f3 Nc6 6 Be3 a6 7 Nge2 Rb8 8 Nc1 e5 9 d5? (Better Nb3) Nd4! 10 N1e2 c5! 11 dxc bxc 12 Nxd4 Exd 13 Bxd4 Rxb2 14 Nb5? (Better Qc1) Nxe4!! 15 Bxb2 Qa5+ 16 Nc3 Bxc3+ 17 bxc3 Qxc3+ 18 ke2 be6! and White resigned.
 Like it? Then try to locate the book. You'll have fun!

FOR OUR NEXT ISSUE

Please send your contributions to the new Editor,
 R. J. McCrary, 564 Rainbow Circle, West Columbia SC
 29169.

Contributions should reach the Editor by March 15 to be certain of inclusion.

TOURNAMENT ANNOUNCEMENTS

EDITOR'S NOTE: Through an agreement with North Carolina we are announcing here North Carolina tournaments that require NCCA memberships. Through a reciprocal agreement SCCA memberships will be honored. South Carolina organizers who wish to announce their tournaments in the "Carolina Gambit" published by the NCCA should contact its Editor, Charles Alden, 1031 Dacian Ave., Durham, NC 27701.

CHARLESTON, FEBRUARY 19-20; THE 11th SNOWSTORM SPECIAL 5-SS at the North Charleston City Hall, I-26 and Mall Drive, Room 517. TL 40/100. EF \$15 if received by 2/12; \$20 at the door. Rds. 10-2-7; 10-2:30. Prizes \$355 guaranteed, more per entries: 1st \$100, 2nd \$75, B \$50, C \$50, D \$40, E \$40, Unr., based on performance rating. Entries to Charleston Chess Club, P O Box 634, Sullivan's Island 29482-0634; phone (803) 883-3783; or at door 9:00-9:50 a. m. 2/19. Rates at Days Inn, I-26 and Montague \$25.88-\$30.88. Limited Smoking.

CAROLINAS OPEN, APRIL 9-10, LANCASTER 5-SS in three sections (Open, Reserve, Amateur.) ALL: At Starr Hall, University of South Carolina at Lancaster, S. C. Highway 9 West. TL 40/90. SCCA or NCCA membership required. Entries to Marion Mahaffey, 1207 Memorial Park Rd., Lancaster SC 29720, or at the site 8:30-9:30 a. m. on April 9. Rds 10-2-6; 10-3. Limited Smoking, no computers. OPEN: EF \$20 in advance by 4/6, \$25 at the door. Prizes 33%, 17%, 11%, Cat. I 11% first and 8% second. RESERVE: Limited to under 1800 ratings. EF \$15 in advance, \$20 at the door. 1st-3rd prizes as Open; Cat III 11% first, 8% second. AMATEUR: Limited to ratings under 1400. EF \$10 in advance, \$15 at the door. Prizes 33%, 17%, 11%, Cat. V, VI, Unr. 11% first, 8% second.

LAST CHANCE WARMUP

10/17/82

COLUMBIA

PLAYER	PKE		POST					TOT
	ST	RTNG	W	L	D	W	L	
1 HILL, JIMMY	SC	2018	2031	*	D	W	N	2.5
2 MILLER, DAVID W	SC	2009	1991	D	*	L	W	1.5
3 HYATT, JAMES C	SC	1857	1847	L	W	*	L	1.0
4 DAVIS, DANIEL W	SC	1378/4	1571	L	L	W	*	1.0

SCCA NEWS is published by the South Carolina Chess Association, a non-profit organization of chess players and persons interested in chess in South Carolina. The SCCA seeks to encourage and foster the playing of chess within the state. It is the recognized state affiliate of the U. S. Chess Federation for South Carolina.

Any person is eligible to become a member through payment of annual dues to the Secretary. Regular dues are \$6; Junior dues for persons 18 years of age and younger are \$3. A person may become a Patron member by payment of \$10.

SCCA NEWS is edited by Lee Hyder, 33 Longwood Dr., Aiken, SC 29801. It is printed at the Baopipe Press, Hodges, SC 29646.

1981-1982 officers of the SCCA are as follows:

President: William B. Flovd, 4315 Devereaux Rd., Columbia, SC 29205

Vice-President: Paul E. Tinkler, 1716 Pearlott St., Charleston, SC 29407

Secretary: Donald Lemaster, 1471 Pine St., West Columbia, SC 29169

Treasurer: Marion E. Mehaffey, 1207 Memorial Park Rd., Lancaster, SC 29720

Immediate Past President: Philip F. Jackson, 2630 Cooper Ave., Columbia, SC 29205

Editor: Lee Hyder, 33 Longwood Dr., Aiken, SC 29801

- 28 -

FIRST CLASS MAIL

SCCA

SCCA NEWS

1471 Pine St.

West Columbia, SC 29169



HENRY J. WHITE
725 HOSS ST.
CHARLESTON, S.C.
29407

02/83

