

SOCCER NEWS

JAN. 1987

ISSUE NO. 1



FRANK
FRANKLIN

<u>NAME OF CONTENT</u>	<u>PAGES</u>
Editor's Note	6
Minutes of SOCA Business Meeting	7
Results of SOCA Elections	10
Treasurer's Report	11
How Well Do You Know The Rules?	12
Annotated Games:	
Holmes vs. Ramsey	15
Abrams vs. Ferguson	17
Ferguson vs. Corbett	18
Reviews: <u>NEWSPAPER</u> & <u>NEWSMAGAZINE</u>	19
List of S.E. Postal Chess Players	20
Crosstables:	23
Lasser II	
Charleston Classic '88	
S.E. Closed Championships	
Spartanburg '88 Championship	
1985 S.E. Postal Championship	
1986 S.E. Postal Championship	
2nd Annual Telefile-Octagon	
Tournament Info	25

* * * * *

Cover design: Walter Hunt

Checkmate Cartoons: Andy Jackson (AJAX)

Typing Assistance: John Legler

Kim Miller

Annotated games, articles, photographs, illustrations, are subject to copyright unless by the author(s). The Editor, however, will make supplementary comments as deemed appropriate.

EDITOR'S NOTES

It is with regret and sorrow that I report the death of SCCA member Don Horton of Greenville on or about January 18, 1987. Don was a regular participant in upstate tournaments and only recently did I learn of the great physical problems he endured. Don suffered from a severe form of hemophilia and traveled frequently to Chapel Hill for experimental treatments. He was the first person to receive a drug now commonly used to treat this disorder. It is noteworthy that the Greenville CC is naming a tournament in his memory. The current issue of the SCCA NEWS is coming out a month late. I apologize for this, but it couldn't be helped as I had to wait for election results and certain other important items. Deadline for the next issue will remain April 5. CONTRIBUTIONS ARE NEEDED!! Congratulations to Klaus Pohl who won our state OTB championship in November. The Spartanburg CC held an awards banquet on Dec. 9. Larry Goldberg was the guest speaker. He had some wonderful comments to make concerning the development of youth chess programs. Those of you interested in junior chess should contact him for some excellent ideas. It is also worth mentioning that Larry is Seirawan's campaign manager for USCF president. Some members have commented to me that our new SCCA election procedure has a few bugs. First, write-in votes are permitted. This was not made clear on the ballot. Also, since the ballots were not numbered, in some fashion, ballot-box stuffing was possible. Furthermore, the proposed constitutional amendment was worded improperly. Obviously, more care needs to be

taken next year. I might also mention that our constitution may be found in the SCCA NEWS, vol. xx, no. iii, July 1985. The only change that was made during ratification was that the frequency of publication of the newsletter was reduced from 4 to 3 issues per year. Members desiring a copy should send me a SASE and I'll make a copy for you. At the last SCCA business meeting no one brought a copy of the constitution which created an absurd situation when people proposed amendments without, evidently, having read the constitution.



INDECISION.

MINUTES OF THE SCCA BUSINESS MEETING

Reported by Don Lemaster, Sec.

1. Marion Mahaffey presented the Treasurer's report for Pat Hart.
2. Bill Corbett presented the results of the Nominating Committee:

President: Paul Tinkler, Mickey Bush, Marion Mahaffey,
 & David Williams (Withdrew)

 Vice President: Robert Strickland

 Secretary: Don Lemaster, Emmanuel Seko

 Treasurer: Pat Hart

3. Old business-none

4. New business:

-Motion by Marion Mahaffey to change the SC Closed to the second weekend in June (Failed)
 -Amended motion by Marion Mahaffey to change the constitution to read that "the SCCA officers are responsible for setting up and promoting the State Championship in Columbia during the month of October."
 (Passed-pending approval on the mailed ballot)

5. Meeting was adjourned

Results of SCCA Elections

Reported By Mr. Gale Nicolet, Teller

President: Marion Mahaffey	19
Paul Tinkler	10
Mickey Bush	9
 Secretary: Don Lemaster	 29
Emmanuel Seko	8

*Constitutional Amendment: yes 27
 no 10

Bob Strickland (Vice President) and Pat Hart (Treasurer) were elected without opposition.

*The proposed constitutional amendment was stated incorrectly on the ballot. However, the intent of the amendment seems to have been maintained. See minutes of the SCCA Business Meeting for the correct wording.
 -Ed.

 * SOUTH CAROLINA CHESS ASSOCIATION *

1986 Treasurer's Report: By Patrick Hart

Cash on hand 11/8/85

\$772.50

INCOME

Receipts: Dues	+	<u>\$478.00</u>
Donations	+	<u>\$9.00</u>
Miscellaneous	+	<u>\$18.50</u>
Journey Ad(s)	+	<u>\$3.00</u>

TOTAL INCOME

\$508.50

EXPENSES

Expenses: Magazine	-	<u>\$208.32</u>
Postage	-	<u>\$176.74</u>
Membership Cards	-	<u>\$21.00</u>
Envelopes	-	<u>\$3.41</u>
Deposit Return	-	<u>\$6.00</u>
Affiliation Renewal	-	<u>\$30.00</u>
Refund(s)	-	<u>\$12.00</u>

TOTAL EXPENSES

\$457.47

Net Gain/Loss

+ \$51.03

CASH ON HAND

\$823.33

CURRENT AS OF 10-31-86

How Well Do You Know The Rules?

by David K. Williams

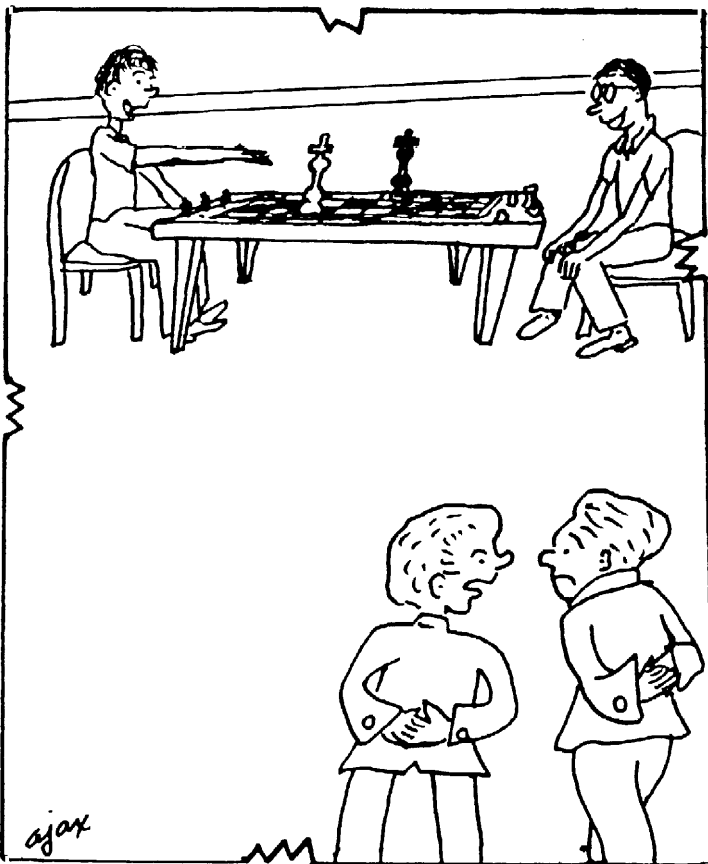
According to the Official Rules Of Chess, 2nd. ed. "any participant in a USCF-rated tournament is assumed to be familiar with all the rules..."(pp. 113-4). With this in mind take a few moments to complete the following test. Answers may be found on page 15 .

1. In what situation can a player legally omit the recording of moves during a game?
 - a) In a time scramble check marks may be used to substitute for up to three omitted move pairs.
 - b) If less than five minutes remain until the time control expires.
 - c) If the arbiter rules that the player is "extremely pressed for time".
 - d) A player is not required to record moves although he or she would lose certain rights (eg., time forfeit claim) under these circumstances.
2. Two players finish a Swiss-system tournament tied for first. Under FIDE rules which tie-breaking method would be used to decide who gets the trophy?
 - a) Median
 - b) Cumulative
 - c) Buchholz
 - d) Elo
3. In a tournament game which player decides on the equipment to be used?
 - a) White
 - b) Black
 - c) Both must agree
 - d) The TD flips a coin
4. White castles long and Black protests that castling is illegal since Black's bishop on f5 attacks the b1 square. Did White make an illegal move?
 - a) Yes
 - b) No
5. Players are permitted to do which of the following during a game:
 - I. Record moves
 - II. Make brief notes in the margin of their scoresheet.
 - III. Jot down the time on the clocks for each move.
 - a) I only
 - b) I and II only

- c) I and III only d) I, II, and III
6. White arrives at the proper time to start a round. However, Black is not present. What action should White take?
- a) Start Black's clock
b) Start Black's clock then make a move
c) Start his own clock, make a move, then start Black's clock
d) Either a) or b)
7. Player A has omitted several moves and asks Player B for her scoresheet so that he may get his scoresheet up to date. Is Player B required to honor this request?
- a) Yes b) No
8. For which type of clock is one-minute always added to the time control?
- a) A wind-up mechanical clock
b) A quartz clock with dial faces(eg., with hands, flags, etc.)
c) A quartz clock with digital readouts
d) Both a) and b)
9. Player A makes a move which creates a three-fold repetition of a position. He then claims a draw. However, Player B makes a move and starts his opponent's clock. Indignant, Player A stops both clocks and summons the TD. What has occurred?
- a) The game is drawn
b) White acted illegally
c) Black acted Illegally
d) All of the above
10. As Player A makes a move he offers a draw and then starts his opponent's clock. Player B makes no response and studies the board for several minutes. Player A notices that Player B's flag is about to fall and "withdraws" his draw offer, so that Player B cannot escape a time-forfeit by accepting the draw. Player B accepts the draw, anyway, and then his flag drops. What has occurred?
- a) The game is drawn

- b) Player A made an illegal draw offer
- c) Player B has lost on time
- d) The TD will restart the game from the point at which the draw offer was made and estimate how much time should be put back on Player B's clock

Default!



"I KNOW I SHOULD DECLARE IT A DRAW, BUT
THEY'RE HAVING SUCH A GOOD TIME!"

1986 S. C. Closed Championship

Holmes vs. Ramsey

- 1 d4 ♖f6
 2 ♖f3 g6
 3 e3 ♗g7
 4 ♗d3 O-O

White has adopted the Colle System buildup, and Black has countered with a King's Indian formation, which is one of the most effective defenses against this opening.

5 O-O d6

6 c3

6 ♖c3 would not be bad here, because Black cannot prevent e4.

6 -- ♜e8

7 e4 b6?

With 7 -- e5 Black has full equality. Now Black has a hole in his pawn formation, and White can use the lost time to take a little initiative.

8 e5 dxe5

9 Nxe5 ♗b7

10 f4?

White does better to support his ♖ at e5 by developing his pieces: ♜e1, ♖d2-f3, ♗f4. The move played gives Black a chance to strike back at once with 10--c5, and if then 11 ♗b5, simply ♜f8; White has lost enough time (by e3-e4 and ♗d3-b5) that Black can lose some also without disadvantage.

10 -- ♖bd7

11 ♗b5 a6

- 12 ♖c6 ♗xc6
 13 ♜xc6 ♝c8
 14 ♜e1 e6
 15 ♝f3 ♜d5
 16 ♜bd2 ♜e7

An interesting move here would be 16--a5. The point is that now the white ♜ can be driven back, and also that if White plays c4, Black can answer with ♜b4.

- 17 ♜c4 ♜xc6
 18 ♝xc6 Rb8
 19 ♜e5 ♜xe5
 20 fxe5 ♝b7

The exchanges have left White with the "bad bishop", i. e. the bishop on the same color squares as a rather fixed pawn formation. This can be enough to lose the game. Black quite properly plays to get the queens off.

- 21 ♝xb7 ♜xb7
 22 ♗e3 ♜b8 (sic)

Yes, it is ambiguous; I presume this is ♜7b8. But, as the course of the game goes, it doesn't matter which ♜ moves; neither player finds anything useful to do. A shame! There is a lot of interesting play, starting for example with 22--c5. Now 23 dxc5 bxc5 24 ♗xc5 ♜xb2 is slightly in Black's favor, although the passive 25 ♗d4 can probably hold. On moves maintaining the tension, such as 23 ♜ac1, Black can play c4 followed by b5, a5, and b4, maintaining some initiative. White would like to play d5, but a Black ♜ at d8 can discourage this.

- 23 g4 ♗f8 (?)

24 a3(?) ♖c8

Again, I don't know which ♖; the ♖ at e8 might better come here. White seems determined to make his ♘ as "bad" as possible. Black, meanwhile, never gets to the thematic moves c5 and/or b5,a5,b4 attacking the pawn chain.

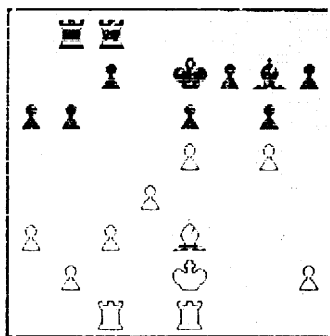
25 ♖ac1 ♘g7

26 g5 ♖f8

27 ♖f2 Ke7

28 ♖e2

The players agree a draw in a position that is still full of possibilities, but they don't seem to see them. White has a threat of ♖-f1-f3-h3, perhaps with ♖cf1 played at some point also. To meet this Black will have to play his ♖ back to g1, or else try to free himself with 28--♖h8 and 29--h6. There is also the move c5, which Black has resisted playing for many moves now; its value depends on where Black actually has his rooks. None of these sequences lead by force to a decisive advantage for either side. Perhaps a draw was most appropriate.



1986 S.C. Closed Championship
Abrams vs. Ferguson

White	Black	White	Black
1. e4	e5	21. b3?	Qc3!
2. Nf3	Nc6	22. Qc3:	d7!
3. Bb5	f5!(a)	23. h3	d1(G)
4. Nc3(b)	fot	24. Re1	Qd4(!)
5. Ne4:	d5	25. Qg3	Qd6
6. Ne5:(c)	de:	26. Qd4:(m)	Ff4:
7. Nc6:	Qd5!(d)	27. a4	Rd3
8. c4	Qd6	28. Rb1	Ne4
9. Na7: ch	Bd7	29. b4	Nd2?
10. Bc7: ch	Qc7:	30. Rc1(n)	Rd4
11. Nh5(e)	Nf6(f)	31. b5	Rc4:
12. Q-O	Bc5	32. Rc4:	Nc4:
13. d5	ed1:(g)	33. bc:	bc:
14. Re1 ch	Kf7	34. f4	Ke6
15. Bc4	Bc3:	35. g4	Kd5
16. Re3:(h)	Rad3	36. Kf2	Ke4!
17. Qd2(i)	Rhe6	37. Kg3	Ne5(n)
18. Ra1(i)	Re3:	38. h4	cb
19. Kc3:	c6	39. f5	ce
20. Kc3	Qd4(P)	40. h5	h6

Resigns 0-1

a. The Schliemann defence to the Ruy! I just couldn't resist submitting notes on this game. I used to play it myself. David knew that. I guess that's why he included it among the games he sent me. It certainly makes the game sparkle--at least when White accepts the challenge. We're not likely to get a dull game of attrition. My thanks to both players. I'm indebted for many of the citations here to Tibor Florian's booklet published in 1970.

b. White could still opt for a closed game with 4. d3. A likely continuation then is 4. ...f6!; 5. de:, Nf6; 6. Q-O. Instead White goes in for the Dychoff variation where everything gets wide open in a hurry. White's choice here might be open to criticism unless he (she?) is "booked up".

c. Hooray for White's courage! Showing no fear of prepared variations, White pursues the main classical line. 5. Ng3 has caused some distinguished Blacks difficulty. Spascky, for example, answered that with 6. ... Bb6 in Bannik-Spascky, 1960. Bb6 is, however, a blunder since 7. Rc6: ch, bc:; 8. Ne5: wins a pawn.

d. Black is not in bad shape. Both 7. ... bc: and 7. ... Qg4: have been tried here. On 7. ... bc: White's best is 8. Bc6: ch, Bc7:; 9. Qh5: ch, Ke7:; 10. Qe5 ch, Re6:; 11. Ba8:+. On 7. ... Qg4: Q. Qc2 defends the b5 Bishop and disallows 8. ... Qg2:! ... because of 9. Qh5 ch!!.

e. Here I think White should have played 11. Qh5 ch. If 11. ... d6: then 12. Nh5 or even 12. Qa5!?, while if 11. ... g6:; 12. Qh5 ch, f7:; 13. Nh5, f6:; 14. Qd4! and Black does not easily get

m. ... Rb5! (as happens in the game) without trading queens.

n. Had Black's e pawn jumped. (White: Black will get to ... Rb5 and White's f side f4th base). Still, White has the pawn.

o. Carroveros -- one pawn.

p. White goes after the king in his throat.

q. Being the theme of a direct check is expensive. Why not 17. Qf5 or 17. Qh3? I like this position for Black. If White's N moves, Black gets the diagonal with both of targets. If White tries to counter that by recapturing with a pawn at e3, then the Black Knight settles on e6, which causes problems when the White Queen is on d7. This kind position really planning early for Black. To those of us who are used to that department, a position with crown king is comfortable to be in.

r. Look at 19. b3; 1. Nc1; 2. Nd1; 3. Re1; 4. Qe1; 5. Qd1; 6. Qc1; 7. Qb1; 8. Qa1; 9. Nc2; 10. Nd3; 11. Ne4; 12. Nf5; 13. Nf6; 14. Nf7; 15. Nf8; 16. Nf9; 17. Nf10 and Black gobbled up everything while White nothing.

s. With a threat which White will accept. Florin's little book gives exactly the same position in a training game (Shapiro-Brechner, 1977). Some 100 years ago, the same threat, so White's in good company.

t. Black keeps the White queen away from e5 while hold on the d-file to itself. In a moment, I'd probably have played simply with something like 29. ... Qd7; allowing 30. Qx5, Re8; 31. Qx7 ch, Qd7; 32. Qd7; 33. Qd7; 34. Qd7; 35. Qd7; 36. Qd7; 37. Qd7; 38. Qd7; 39. Qd7; 40. Qd7; 41. Qd7; 42. Qd7; 43. Qd7; 44. Qd7; 45. Qd7; 46. Qd7; 47. Qd7; 48. Qd7; 49. Qd7; 50. Qd7; 51. Qd7; 52. Qd7; 53. Qd7; 54. Qd7; 55. Qd7; 56. Qd7; 57. Qd7; 58. Qd7; 59. Qd7; 60. Qd7; 61. Qd7; 62. Qd7; 63. Qd7; 64. Qd7; 65. Qd7; 66. Qd7; 67. Qd7; 68. Qd7; 69. Qd7; 70. Qd7; 71. Qd7; 72. Qd7; 73. Qd7; 74. Qd7; 75. Qd7; 76. Qd7; 77. Qd7; 78. Qd7; 79. Qd7; 80. Qd7; 81. Qd7; 82. Qd7; 83. Qd7; 84. Qd7; 85. Qd7; 86. Qd7; 87. Qd7; 88. Qd7; 89. Qd7; 90. Qd7; 91. Qd7; 92. Qd7; 93. Qd7; 94. Qd7; 95. Qd7; 96. Qd7; 97. Qd7; 98. Qd7; 99. Qd7; 100. Qd7.

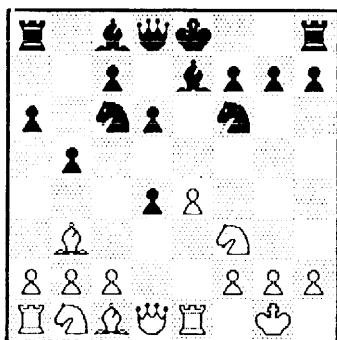
u. It seems White will ... the other the exchange of Queens on the exchange of Rook, or just get the central files. Black follow the ... and you'll end up in inferior, exchange pieces, not pawn.

v. Rb5, Qc1, because of 20. ... Rb5 ch.

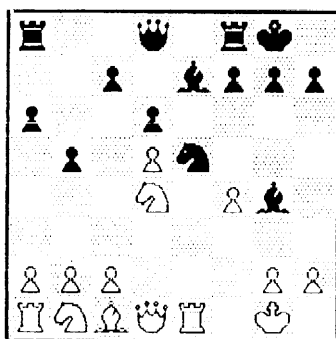
w. White will stop the e pawn.

ruy lopez
 center variation
 1988 sc closed
 ferguson
 corbett

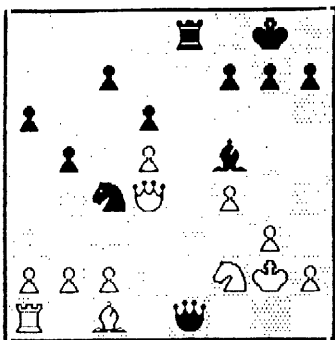
1 e4 e5 2 Nf3 Nc6 3 Bb5 a6 4 Ba4 Nf6 5 d4 (Morphy played this variation against Lowenthal) exd4 6 O-O Be7 7 Re1 b5 8 Bb3 (another line is 8 e5 Ne5 9 Re5 d6 10 Re1 bxa4 11 Nd4 Bd7 12 Qf3 oo 13 Qc6 Bxc6 14 Qxc6) d6



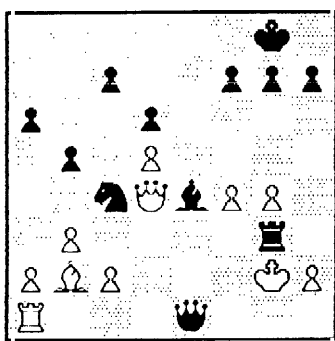
9 Bd5 (not 9 Nxd4 Nxd4 10 Qxd4 c5 11 Qd1 c4 which is Noah's Ark trap. The text move delays Black's Bg4 and threatens Nxd4) Nxd5 (Possibly better than the usual Bd7 10 Bxc6 Bxc6 11 Nxd4 Bd7 12 Nc3 oo 13 Bf4 Re8) 10 exd5 Nc5 11 Nxd4 O-O 12 f4 (Trying to chase the knight away which would allow Nc6 winning material on e7) Bg4



13 Qd1 Bg4 14 Qd1 (better may be 14 Qf2 although Black is still for choice After Bh4 15 g3 Bf6 16 Nc6 Qd7 17 Nd2 Nxd2 18 Bxd2 Ff6 19 Rc3 Bxc3 20 h3 Qf6 21 f5 e5 Fxe8 22 Re1 Bf5 23 Re3 Re3 24 Qxe3 Qe8) Bh4 15 g3 Bf6 16 Nc6 Re8 (because White's QD is still on c1 Black challenges on the open file right away rather than playing a move like Qd7) 17 Fxe8 Qxe8 18 Ne4 Bxd4 19 Qxd4 Bf5 20 Nf2 Qe1 21 f5 Re8 (ignoring Bxc2)



22 b7 Rf2 23 g4 (if 23 b7 Rf2 24 Qxf2 Be4 winning the queen) b64
 24 f3 Rf2 25 Rb1 (the threat is Qg7 mate) Rf3 26 Fg7 Fg7
 (discovered double checkmate) 10-11



S.C. CHESS CLUBS

Aiken/North Augusta
 City Recreation Center
 Buena Vista Ave.
 N. Augusta
 Wed. 7pm

Columbia
 Bruce Bldg.
 1321 Lady St.
 Columbia
 Thur. 7:30pm

Greenville
 Bobby Pierce Rec. Center
 N. Towne St. Ext.
 Greenville
 Wed. 7:30pm

Grand Strand
 contact Gary Sheets (home phone 249-2940)

Charleston
 N. Charleston City Hall
 Mall Dr., I-26 & Montague exit
 to Charles Towne Mall
 Wed. 7pm

Lancaster
 Starr Hall, USC-Lancaster
 Herbert Dr.
 Lancaster
 Tue. 7:00

Spartanburg
 Arts Center
 385 S. Spring St.
 Spartanburg
 Tue. 7:30pm

Answers to "How Well Do You Know The Rules?"

1. Formerly the rather vague answer c) was correct. However, the 1986 edition of The Official Laws of Chess defined this situation as answer b). Incidentally, check marks have no validity at all.
2. This is definitely a trick question. The key word is "FIDE". Under their rules the Bucholz system (answer c) is used. A player's tie-break score is simply the aggregate of his or her opponent's scores. Non-FIDE, USCF tournaments use Cumulative tie-break (answer b) which is the sum of a player's round-by-round cumulative scores minus a point for unplayed wins, byes, etc.
3. Answer b) is correct except that Black may not chose a set of unusual design or colors. In match play answer c) would be correct.
4. b) The Rook may, indeed, pass over an attacked square, but not the King.
5. c)
6. d)
7. b) The proper procedure was for Player A to make the request of the TD who would have told Player B to provide the scoresheet. Although this may not seem fair to Player B, Player A must update his scoresheet while his clock is running.
8. Until I hear differently, I will assume answer d) is correct. The rule is intended to compensate for differences in the mechanical operation of clocks which would seem to include any clock with hands and flags regardless of power source.
9. b) Actually, Player A acted illegally twice. He was supposed to claim the draw without making the move that would have resulted in a three-fold repetition. He should have notified the TD and have written the move on his scoresheet without actually playing the move. Player A was also wrong to have stopped both clocks.
10. a) A player can never withdraw an offer of a draw. The offer is terminated only by the opponent's play of another move or verbal rejection of the draw offer.

REVIEWS

If you own a Commodore 64 computer and have noticed ads in Chess Life from a company called CHESSOFT LTD. then the following reviews should interest you. The second program to be reviewed may be available, by now, in IBM-PC format also.

SCOREPAD 64 is a true database program for chess applications. Games may be recorded with joystick input. Notations to games are entered on the keyboard. A command menu allows one to place annotations within the game text or at the end. The color display (on the computer monitor) features well-defined pieces. Up to 144 games or openings may be stored on a disk and you may make back-up copies as needed since the software is not copy-protected. SCOREPAD 64 can be interfaced with many word-processor programs such as Easyscript, Paperclip, and Speedscript, but games scores, notes, and diagrams can be printed out with SCOREPAD 64 alone. Incidentally, the diagrams produced with SCOREPAD 64 are first-rate. For a sample see the game on page 13 of this issue of the SCCA NEWS. One use of SCOREPAD 64 is in postal chess. You can easily update your postal games and play over the entire game quickly on the computer screen to refresh your memory. (The pieces also can't fall out of your postal recorder.) A use to which I have personally put SCOREPAD 64 is in openings analysis. When preparing a variation of the King's Indian Defense I used SCOREPAD 64 to print out key positions that I wanted to remember. That this method is effective was demonstrated by my game with Mickey Bush published in the SCCA NEWS last October. (Alas, Mickey got his revenge in another tournament several weeks later.)

CHESS QUIZ is a computer video game which features over 1600 chess problems. A rating system roughly comparable to an Elo-system keeps track of your progress as you solve (or fail to solve) the various problems. A digital clock displayed next to the video chessboard determines elapsed time and your score partly depends on how quickly you solve each problem. The disk is copy-protected and automatically updates itself with your rating history after each use. A minor complaint I have with this program is that the pieces move too slowly across the screen for my taste. Nevertheless, the program is fun and easy to use.

Ordering software by mail can be an adventure, and often an unpleasant one, however, I've found CHESSOFT LTD. to be extremely prompt and reliable in filling orders. To order send \$29.95 to CHESSOFT LTD., 723 Barton St., Mt. Vernon, IL 62864 for each program desired.

--David K. Williams

SOUTH CAROLINA POSTAL PLAYERS

compiled by MICKEY BUSH

1. ALLEN CHANDLER	2128	30. KARL STOVER	1689
2. RANDALL RYAN	2094	31. A MARTIN De NICOLAS	1659
3. SAMUEL PLAYFAIR	2077	32. PAUL MOLNAR	1651
4. LEE HYDER	2043	33. DOYLE DAY	1631
5. HAROLD BUSH	2000	34. DAVID MILLER	1622
6. D M SCOTT	2000	35. DONALD SLADE	1615
7. PATRICK HART	1979	36. BILL FLOYD	1595
8. EDWARD McCAULEY	1944	37. LAWTON WIGGINS	1595
9. JON VONDERLIETH	1937	38. ROY KING	1591
10. IRVING ROSENFELD	1930	39. WINSTON REED	1578
11. CLAUDE CORBETT	1921	40. JOSEPH CORBETT	1562
12. JAVY GWALTNEY	1901	41. JOHN MATT DORN	1511
13. JOHN CRAWFORD	1888	42. DAVID McEACHEM	1509
14. ARTHUR PATERSON	1861	43. ANDREW JACKSON	1480
15. RICHARD CHESHIRE	1859	44. THOMAS CHROMCZAK	1471
16. ROBERT STRICKLAND	1855	45. CLARENCE TICHENOR	1411
17. ROBERT MOORER	1837	46. BUDDY PASCHAL	1378
18. VIRGIL SMITH	1833	47. JESUS LOZANO	1378
19. DON LEMASTER	1828	48. EARL C BARBER	1367
20. JOHN MALANDRE	1811	49. DONALD HORTON	1356
21. DAVID WILLIAMS	1786	50. FRANK WILLIAMS	1316
22. ELLIOTT SCHWARTZ	1779	51. MATHEW SAVAGE	1249
23. WAYNE WILLIAMS	1773	52. LEROY LEWIS	1245
24. JAMES SLATON	1759	53. MICHAEL KINZIE	1220
25. JACK BERRY	1740	54. PAUL WATSON	1213
26. THOMAS HUTCHESON	1740	55. AUGUST MAHON	1140
27. MIKELL JOHNSON	1717	56. TROY MOTTE	1140
28. DENNIS FISH	1710	57. BRIAN KANTSIPER	1114
29. MARK KLUGE	1706	58. ALFRED SPRUILL	1080

LANCER II- Lancaster
May 3, 1986

#	Name	Round 1	2	3	Total
1	Russell Thurmond	L4	W6	-	1
2	Marion Mahaffey	W5	L3	-	1
3	Robert Moore	W6	W2	W4	3
4	A.M. de Nicholas	W1	W5	L3	2
5	John Grant	L2	L4	-	0
6	Joe Shirler	L3	L1	-	0

Charleston Classic VI
TD - Don Lemaster
August 23 - 24, 1986

#	Player	Rating	Round					Score
			1	2	3	4	5	
1.	Klaus Pohl	2271	W12	W9	W2	W8	W3	5.0
2.	Edward McCauley	2101	W10	W17	L1	W4	W8	4.0
3.	Thomas Krause	2254	W27	D4	W6	W5	L1	3.5
4.	Harry Abrams	1981	W13	D3	W26	L2	W9	3.5
5.	David Causey	1926	D14	W23	W16	L3	W11	3.5
6.	Ronald Robinson	1762	D25	W14	L3	W26	W12	3.5
7.	Douglas Holmes	1748	W22	L15	W19	D11	W13	3.5
8.	Paul Tinkler	2055	W20	W11	W15	L1	L2	3.0
9.	Patrick Hart	2044	W21	L1	W18	W17	L4	3.0
10.	Lawrence Hughes	1520	L2	W28	L11	W22	W17	3.0
11.	Michael Milburn	1695	W29	L8	W10	D7	L5	2.5
12.	Jeffrey Rhinesmith	1672	L1	W21	D13	W14	L6	2.5
13.	Javy Gwaltney	1466	L4	W27	D12	W16	L7	2.5
14.	John Crawford	1460	D5	L6	W23	L12	W24	2.5
15.	William Peterson	2224	W18	W7	L8	---	---	2.0
16.	William Floyd	1781	---	W25	L5	L13	W23	2.0
17.	John Vonderlieth	1734	W28	L2	W20	L9	L10	2.0
18.	Philip Lawrence	1621	L15	W22	L9	L20	W26	2.0
19.	Ian Wolfe	1531	---	---	L7	W28	W20	2.0
20.	Joe Rigdon	1507	L8	W29	L17	W18	L19	2.0
21.	Charles Ammons	1491	L9	L12	L22	BYE	W29	2.0
22.	William Smoak	1268	L7	L18	W21	L10	W28	2.0
23.	William Filaud	UNR.	W24	L5	L14	W29	L16	2.0
24.	John Haymond	1682	L23	L26	D29	W25	L14	1.5
25.	Daniel Baisdon	1337	D6	L16	L27	L24	BYE	1.5
26.	Dean Thomas	UNR.	D30	W24	L4	L6	L18	1.5
27.	Ellis Roy	1662	L3	L13	W25	---	---	1.0
28.	Buddy Miller	1058	L17	L10	BYE	L19	L22	1.0
29.	Leonard Robinson	UNR.	L11	L20	D24	L23	L21	0.5
30.	Donald Lemaster	1701	D26	---	---	---	---	0.5

86 S.C.CLOSED CHAMP

TOURNAMENT NO.

COLUMBIA

SC 29210

START DATE: 10/31/86 END DATE: 11/02/86 DATE REC'D: 11/12/86

AFFILIATE: T5006066
 SOUTH CAROLINA CHESS ASSN
 C/O DON LEMASTER
 1471 PINE STREET
 WEST COLUMBIA

DIRECTOR: 111
 DON LEMASTER
 1471 PINE ST

SC 29169

WEST COLUMBIA

PLAYER	ST	PRE RTNG	POST RTNG						TOT
				1	2	3	4	5	
1 POML, KLAUS A	SC	2275	2293	W16	W-4	W-6	W-3	D-5	4.5
2 WILLIAMS, WAYNE GO	SC	2209	2212	L-9	D-7	W16	W13	W-8	3.5
3 CORBETT, III CLAUD	SC	2069	2105	W14	W-8	W-9	L-1	D-4	3.5
4 TINKLER, PAUL E	SC	2062	2093	W10	L-1	W14	W-6	D-3	3.5
5 FRADY, GREGORY A	SC	1834	1916	B--	D-9	W13	D-8	D-1	3.5
6 BERRY, JACK J	SC	2113	2111	W11	W15	L-1	L-4	W10	3.0
7 ABRAMS, HARRY LEE	SC	2087	2095	D13	D-2	L-8	W15	W11	3.0
8 FERGUSON, RANDAL G	SC	2220	2198	W12	L-3	W-7	D-5	L-2	2.5
9 HART, PATRICK D	SC	2026	2035	W-2	D-5	L-3	L11	W13	2.5
10 SHAW, STEVEN J	SC	1926	1939	L-4	W11	W15	H--	L-6	2.5
11 WILSON, J FRED	SC	1993	1981	L-6	L10	W12	W-9	L-7	2.0
12 USZKAY, PETER	SC	1933/5	1897	L-8	L14	L11	W16	B--	2.0
13 PESCHKE, MIKE	SC	2029/8	1996	D-7	W16	L-5	L-2	L-9	1.5
14 PURVIS, LEE D	SC	1902	1900	L-3	W12	L-4	U--	U--	1.0
15 STRICKLAND, ROBERT	SC	1836	1813	B--	L-6	L10	L-7	U--	1.0
16 HILL, JIMMY	SC	2083	2020	L-1	L13	L-2	L12	U--	.0

86 S.C.CLOSED/RESERVE

TOURNAMENT NO.

PLAYER	ST	PRE RTNG	POST RTNG						TOT
				1	2	3	4	5	
1 WICKRAMASINGHE, PA	SC	1237/13	1329	W-9	D-5	W16	W-6	W-3	4.5
2 WALL, STEVEN B	SC	1338/6	1410	W13	W11	W-7	L-3	W10	4.0
3 MENDIAS, JORGE LUI	TX	1297/6	1418	W-8	W10	W-4	W-2	L-1	4.0
4 LONG, GERRALD	SC	0	1471	W15	W14	L-3	W11	W-7	4.0
5 DONNARD, JAMES F	SC	1393/3	1411	W11	D-1	L-6	W16	W-9	3.5
6 BRIDGERS, HUGH F	SC	1214	1227	L-7	B--	W-5	L-1	W14	3.0
7 FISHER, MICHAEL	SC	1093/3	1220	W-6	W16	L-2	W14	L-4	3.0
8 FERRELL, ROBERT D	SC	0	1177	L-3	W12	L14	W15	W13	3.0
9 JOHNSON, CHARLIE	SC	0	1207	L-1	W17	W12	D10	L-5	2.5
10 CONKLIN, LARRY W	SC	0	1207	W17	L-3	W13	D-9	L-2	2.5
11 CRANE, KEN	SC	1388	1345	L-5	L-2	B--	L-4	W16	2.0
12 MILLS, MARK	SC	0	866	L14	L-8	L-9	B--	W17	2.0
13 CHATHAM, ROBERT L	SC	0	1057	L-2	W15	L10	W17	L-8	2.0
14 BLAND, DAVID W	SC	0	1126	W12	L-4	W-8	L-7	L-6	2.0
15 BABIN, FRED	SC	0	834	L-4	L13	D17	L-8	B--	1.5
16 MILLER, BUDDY A	SC	1047	1030	B--	L-7	L-1	L-5	L11	1.0
17 WILLIAMS, ROGER	SC	0	731	L10	L-9	D15	L13	L12	.5

86th S.C.CLOSED/AMATEUR

TOURNAMENT NO.

PLAYER	ST	PRE RTNG	POST RTNG						TOT
				1	2	3	4	5	
1 ZARAGOZA, ROGELIO	SC	1877/7	1978	W16	W-9	W-2	D-4	W-7	4.5
2 VONDERLIETH, JOHN	SC	1711	1790	W11	W-7	L-1	W-9	W-4	4.0
3 HOLMES, DOUGLAS R	SC	1740	1737	D10	D15	W11	D-7	W-8	3.5
4 LOWDER, PHILLIP W	SC	1694	1745	W13	W-5	W15	D-1	L-2	3.5
5 MAHAFFEY, MARION E	SC	1812	1812	W-6	L-4	U--	W10	W14	3.0
6 LAMBERT, THARON J	GA	1538	1560	L-5	W10	L-7	W12	W13	3.0
7 RAMSEY, ROGER B	SC	1778/8	1770	W-8	L-2	W-6	D-3	L-1	2.5
8 CRAWFORD, JOHN N	SC	1497	1530	L-7	W12	D-9	W15	L-3	2.5
9 THURMOND, RUSSELL	SC	1772	1740	W14	L-1	D-8	L-2	D10	2.0
10 AMMONS, CHARLES	SC	1477	1494	D-3	L-6	W13	L-5	D-9	2.0
11 HAYMOND, JOHN W	SC	1461/9	1469	L-2	W16	L-3	L14	B--	2.0
12 OODY, KYLE J	SC	1427	1421	L15	L-8	B--	L-6	W16	2.0
13 TICHENOR, CLARENCE	SC	1418	1407	L-4	W14	L10	B--	L-6	2.0
14 JACKSON, ANDREW A	SC	1396	1419	L-9	L13	W16	W11	L-5	2.0
15 WHITE, J HENRY	SC	1656	1637	W12	D-3	L-4	L-8	U--	1.5
16 BLAND, JR WILLIAM	SC	1623	1547	L-1	L11	L14	H--	L12	1.5

SPARTANBURG CCC

TOURNAMENT NO

SPARTANBURG

SC 29301

START DATE: 10/21/86 END DATE: 11/25/86 DATE REC'D: 12/01/86

AFFILIATE: A6003380
 SPARTANBURG CHESS CLUB
 C/O SPENCER MATHEWS
 387 MILLS AVE
 SPARTANBURG

DIRECTOR: 1
 DAVID KNOX
 102 ELDERBE

SC 29302

SPARTANBURG

PLAYER	ST	PRE RTNG	POST RTNG						TOT
				1	2	3	4	5	
1 SCHENKEL, MARIO	SC	1840	1870	W13	W11	W-4	D-2	W-5	4.5
2 OLMSTED, FREDERICK	SC	1615	1664	W14	W-6	W-7	D-1	D-4	4.0
3 WILLIAMS, DAVID KN	SC	2031	2017	W-9	W-5	H--	L-4	W-8	3.5
4 BUSH, JR HAROLD M	SC	1968	1961	W10	W12	L-1	W-3	D-2	3.5
5 LEGLER, JOHN	SC	1380	1417	W-8	L-3	W14	W12	L-1	3.0
6 JACOBSON, GUY	SC	0	1483	W15	L-2	W10	L-8	W12	3.0
7 KLATTE, RUSS A	SC	1494	1458	L11	W13	L-2	D10	W14	2.5
8 ROSBOROUGH, JOHN	SC	1400/2	1476	L-5	D-9	W15	W-6	L-3	2.5
9 BARBER, EARL CARLT	SC	1245	1256	L-3	D-8	H--	K13	D11	2.5
10 HOOPER, HAROLD A	SC	1073/14	1139	L-4	W16	L-6	D-7	X--	2.5
11 STAMEY, JIMMY	SC	717/5	1007	W-7	L-1	L12	X--	D-9	2.5
12 RUTLEDGE, RONALD W	SC	1298	1297	W16	L-4	W11	L-5	L-6	2.0
13 CARLISLE, JAMES H	SC	1039	1029	L-1	L-7	B--	L-9	X--	2.0
14 GALLOWAY, DONALD L	SC	988/7	1116	L-2	W15	L-5	H--	L-7	1.5
15 MILLER, JAMES R	SC	1283/13	1219	L-6	L14	L-8	B--	F--	1.0
16 BLACKWOOD, BRYAN	SC	0	872	L12	L10	H--	F--	F--	1.5

RESULTS OF 1985 SOUTH CAROLINA POSTAL CHAMPIONSHIP
ROUND ONE

Section 1

Name	Opponent	1	2	3	4	5	6	Total
1 Mickey Bush	X	1	$\frac{1}{2}$	$\frac{1}{2}$	$\frac{1}{2}$	$\frac{1}{2}$		3
2 Jack Berry	0	X	$\frac{1}{2}$	$\frac{1}{2}$	0	1		2
3 Bill Corbett	$\frac{1}{2}$	$\frac{1}{2}$	X	1	0	1		3
4 Dennis Fish	$\frac{1}{2}$	$\frac{1}{2}$	0	X	0	1		2
5 Robert Moorer	$\frac{1}{2}$	1	1	1	X	1		4 $\frac{1}{2}$
6 Clarence Tichenor	$\frac{1}{2}$	0	0	0	0	X		$\frac{1}{2}$

Section 2

1 Wayne Williams	X	0	$\frac{1}{2}$	1	0	$\frac{1}{2}$		2
2 M. Lee Hyder	1	X	0	$\frac{1}{2}$	1	1		3 $\frac{1}{2}$
3 Ed McCauley	$\frac{1}{2}$	$\frac{1}{2}$	X	1	1	1		4 $\frac{1}{2}$
4 Bill Floyd	0	0	$\frac{1}{2}$	X	0	$\frac{1}{2}$		1
5 J. Karl Stover	1	0	0	1	X	0		2
6 Joe Corbett	$\frac{1}{2}$	0	0	$\frac{1}{2}$	1	X		2

Section 3

1 Arthur Paterson	X	$\frac{1}{2}$	$\frac{1}{2}$	1	1	1		4
2 David Williams	$\frac{1}{2}$	X	0	1	$\frac{1}{2}$	1		3
3 Robert Strickland	$\frac{1}{2}$	1	X	$\frac{1}{2}$	1	1		4
4 Phillip Walker	0	0	$\frac{1}{2}$	X	$\frac{1}{2}$	-		1
5 Arturo Martin de Nicholas	0	$\frac{1}{2}$	0	$\frac{1}{2}$	X	1		2
6 Donald Horton	0	0	0	-	0	X		0

ROUND TWO

Ed McCauley, Lee Hyder, Robert Strickland, Bill Corbett, Arthur Paterson, and Mickey Bush are currently competing in this final round. Robert Moorer withdrew and forfeited all games. In the only other result reported thus far Paterson defeated Hyder.

1986 S.C. SPEED CHAMPIONSHIP

1st-Randy Ferguson 8 $\frac{1}{2}$; 2nd-Jack Berry, Fred Wilson, & Mike Peschke 6; 5th-Jimmy Hill 5; 6th-Greg Prady & Tharon Lambert 4; 8th-Farukh Khambaty 3, 9th-Kyle Oody 2 $\frac{1}{2}$; 10th-Andy Jackson 0

2ND ANNUAL YULETIDE OCTAGONAL- Greenville, 12/13/86

1st-Mickey Bush & Wayne Williams (Top Section)
1st-Ronnie Rutledge (Lower Section)
16 players participated

TOURNAMENT ANNOUNCEMENTS

Don Horton Memorial - March 21, 1987

8-man sections; 3-SS; TL: 40/90, SD/30; EF: \$6 by 3/14, \$8 at site; \$\$\$each section: 1st: \$25, 2nd: \$15; Rds. 10-2-6; Reg. 8:30-9:30, SITE: Wade Hampton High School, Greenville, SC, 100 Pine Knoll Rd. (off Hwy. 29 at intersection with Liberty Life Bldg.); ST; NS; ENT: Jeff Smeltzer, Rt. 1 Southern Rd., Taylors, SC 29687 (895-4383); Directors: Jeff Smeltzer & Bill Corbett

SPRING FLING! - May 2, 1987 (tentative)

Details not firm at press time. Send SASE to David Williams, 102 Elderberry Dr., Spartanburg, SC 29302 for info. at later date.

ANNOUNCING 1987 (5TH ANNUAL)
SCCA POSTAL CHAMPIONSHIP

1. Entry fee is \$10.00.
2. Entries will be accepted until ~~February 28~~ ^{3/14} 1987. Sections will not be larger than 7 players, if possible. Top in each section will advance to the finals. Last round will be at least 7 players.
3. USCF and SCCA required and must be maintained while playing. It will be USCF rated. All entrants must give their current USCF ratings (postal and over the board) or, if unrated, estimate your strength according to the following:

Class A:	Strong	Class B:	Above Average
Class C:	Average	Class D:	Novice
4. The tournament will be run according to USCF postal rules. A copy will be provided with each assignment. The Tournament Secretary will be Patrick Hart, who will be responsible for assignments and rulings. The USCF will only be responsible for rating the games.
5. Entries and questions to: Pat Hart, P. O. Box 634, Sullivan's Island, SC 29482-0634. (803)-883-3783 (after noon). Include your name, address, telephone number, SCCA expiration date and USCF ID number with expiration date. Make checks payable to Charleston Chess Club. This is simply to facilitate check cashing and payment of rating fees. The club is not sponsoring this event.

15 TH
SNOWSTORM
SPECIAL

(FEBRUARY 21 - 22, 1987)

*** GUARANTEED PRIZE FUND ***

1st - \$100.00 2nd - \$70.00

B - \$50.00 C - \$50.00

D - \$50.00 Under 1400 - \$50.00

UNR - based on performance rating

*** MORE \$\$ PER ENTRIES ***

PLACE: Trident Technical College (Bldg. 200)
7000 Rivers Avenue (Highway 52)
North Charleston, SC (SEE MAP)

ENTRY FEE: \$15.00 by 2-18-87; \$20.00 at site

REGISTER: 9:00 - 9:55 AM Saturday

ROUNDS: Saturday 10 - 2 - 7; Sunday 10 - 2:30

MOTELS: Royal Prize Inn (744-7415), I-26 Exit 211A; \$20.00 - \$26.00

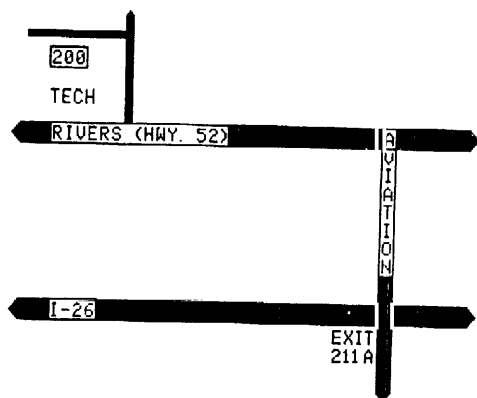
CONTACT: Patrick Hart @ (803) 883-3783

ENTER: Charleston Chess Club

P. O. Box 634

Sullivan's Island, SC 29482-0634

NOTICE: See Chess Life tournament life section



SOUTH CAROLINA CHESS ASSOCIATION

President: Marion E. Mahaffey
1207 Memorial Park Rd., Lancaster, SC 29720

Vice President: Robert Strickland
Rt. 1 Box 37, Smoaks, SC 29481

Secretary: Don Lemaster
1471 Pine St., West Columbia, SC 29169

Treasurer: Patrick D. Hart
P.O. Box 634, Sullivans Island, SC 29482-0634

SCCA NEWS

Editor: David K. Williams
102 Elderberry Dr., Spartanburg, SC 29302

Associate Editor: Harold M. Bush
115 Elliott St., Spartanburg, SC 29301

Game Annotations: M. Lee Hyder, Spencer R. Mathews,
David K. Williams

* * * * *

Persons interested in joining the South Carolina Chess Association, a non-profit organization, should contact the Secretary. Annual dues are \$6. Junior memberships (under 19) are available for \$3.