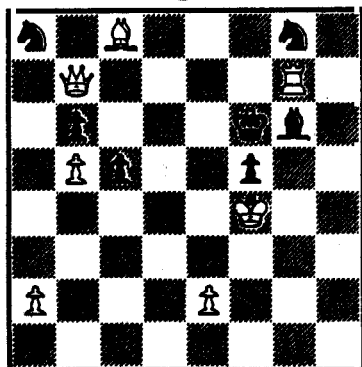


PALMETTO CHESS

Volume 23

Number 1

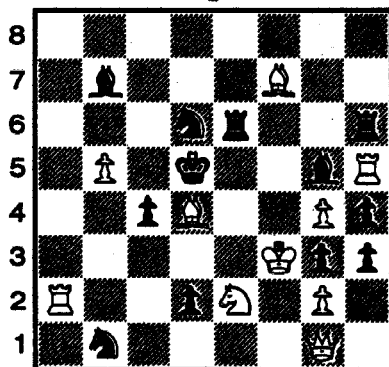
1



a b c d e f g h

White to move and mate in 3

2



a b c d e f g h

White to move, self-mate in 2

Palmetto Chess
(formerly SCCA NEWS)

Table of Contents

The President's Page	1
Interview with Dennis Fish	2
Election Results.	4
Games	5
OTB Ratings	11
Postal Ratings	15
Crosstables	16
Letter to the Editor	19
Treasurer's Report	20
Tournament Announcements	20

Cover problems by Greg Adams (hints at bottom of this page)
Cartoon by Andy Jackson (Ajax)

Typing & computer assistance: Ross Klatte, Ronald Rutledge,
and Harry Hooper

Special Thanks to all Contributors including Pat Hart,
Gary Sheets, Bob Strickland, Marion Mahaffey, Irving
Rosenfeld, Don Lemaster, and John McCrary

Note: No postal championship is planned for '88. However, if there is sufficient a tournament will be started later in the year. If you wish to play please contact Pat Hart.

Annotations are subject to blind review unless otherwise indicated. Next deadline for submissions: April 5

[illegible]

THE PRESIDENT'S PAGE

by Robert John McCrary

I am honored to be elected president of the SCCA, and I will try to follow in the large footsteps of my predecessors in the position. the SCCA, which was founded in 1926, has a rich record of accomplishments over the years. It is one of only about three state organizations to be actively involved in sponsoring a successful world championship candidate's match, and it has a long tradition of publishing one of the best state magazines in the nation, starting in 1959. For that matter, the first American chess magazine published outside of New York appeared in Charleston in 1859, and our own state produced Alonzo and Ernest Morphy (Paul's father and uncle), and Judge A. B. Meek (president of the first American Chess Congress).

While we are proud of the past, we must also look to the future. Our scholastic program is quite dormant, and re-establishing it is our top priority for 1988. We are holding a state scholastic championship on April 30 (details elsewhere in this issue). We have no idea what the participation in this event will be, but we feel we must give this venture our best effort.

Our biggest problem will be to find chess clubs in schools that may have no connection with the USCF or SCCA. We have already found a large and thriving chess club at Airport High School, just a few miles from the Palmetto Chess Club. Only recently did these two clubs discover each other! If any SCCA member knows of any other scholastic clubs in the state, please write to me or to Bob Strickland, our vice-president and scholastic chairman (Our addresses are on the back of each issue).

There is no central organization within the Department of Education that deals with scholastic chess; the High School League, e.g., ignores non-athletic games. We are planning a large mailout to all school districts and private high schools about our state scholastic tournament (It is cost prohibitive to mail to each of the several hundred schools in our state).

On another matter, the SCCA would like to help publicize local clubs. It would be desirable if the sites, meeting times and officer's addresses for the local clubs could be regularly in our magazine along with news of local activities.

We plan to continue the state postal championship, but I think we should avoid timing these events too close together.

The SCCA has a vital roll to play! I hope that each member is willing to help the organization benefit all players in the state.

INTERVIEW WITH DENNIS FISH

In this interview our 1987 S.C. Chess Co-Champion shares his preparations for the state championship tournament and tells about his chess experiences in Southern California. This conversation took place with the Editor at the Spartanburg Chess Club on October 20, 1987.

Q: Tell me about your state championship experience?

A: I'd like to let everyone know that I'm not the best player in South Carolina. However, the fact that I had a dream tournament should encourage everyone that they have a chance. I prepared for the tournament with Wayne Williams, Jeff Smeltzer, and Bill Corbett by playing a short tournament with each other. This helped accustom ourselves to tournament conditions. Wayne and I also studied a book in which the task was to find the best move. That was a great help in visualizing the board. Of course, some luck was involved. In my first game with Jack Berry he touched the wrong piece. In rounds 2 and 4 against Randy Ferguson and Wayne Williams, they both had winning positions, but Ferguson transposed a move order and Williams overlooked a threat after winning my queen. This allowed me to escape with draws in both games.

Q: Did you prepare any special openings?

A: Yes, I played Berry two weeks ago in Charlotte, but he played a different variation of the Nimzo-Indian this time than before. Fortunately, I was prepared for both lines. I also prepared the 2 c3 line against the Sicilian which I used against Ferguson. There were other openings that I had prepared but I didn't get to use them.

Q: You recently returned from Los Angeles. What were you doing out there?

A: I was production manager at a plant that made Easter baskets, Christmas stockings, etc. We also packaged a wooden popcorn bowl & gift set for Orville Redenbacher that he gave to Joan Rivers on her (now defunct) show.

Q: Did you play chess in L.A.?

A: I joined the La Habra Chess Club which is on the northeast side of L.A. I also attended the Santa Monica Chess Club, the Chess Cafe in Hollywood, the Lakewood Chess Club, the Pasadena Chess Club, and Labate's Chess Center. While I was out there Klaus Pohl was there on

a business trip and I took him around to some of these clubs. (Pohl, of course, is a former S.C. Champion.)

Q: It sounds like you had a great time, at least chesswise. Did you have any unusual experiences in La-La-Land?

A: Yes, I was watching a game between Shirazi and Root at a tournament and it looked like after each move that player who moved was going to win. It was easily the best game I've ever seen, and at that moment I felt someone brush my sleeve, and I looked around to see Larry Christiansen. There are rumors in L.A. that he's been secretly playing chess with Bobby Fischer.

Q: You're kidding.

A: No, I'm not. Christiansen won't confirm it because if he does Fischer will cut him off or so the story goes.

Q: You mentioned Labate's Chess Center. Ed Labate became quite a controversial figure with his lawsuit against the USCF. What was your impression of him?

A: Well, his chess center is just that. It's not a club per se, it's a money-making operation. There are people who feel strongly for him and against him. I didn't care for him. One time when I was there they tried to charge me ten dollars just to watch some speed chess.

Q: Dennis, thank you for the interview. What are your plans now?

A: To find a job. Hopefully, in production management.

(If any of our readers want to hire a winner, here's your chance.-Ed.) * * * * *

Tying for first place in the S.C. Closed were Dennis Fish, Randal Ferguson, and Wayne Williams. The Amateur section was won by Michael Cyrus and the Reserve section ended in a first place tie between Pani Wickramasinghe and John Dawson (crosstables elsewhere). The S.C. Speed title was won by Curtis Graham with 8 points followed by D. Williams (7½), G. Frady (7), J. Hill (5), J. Berry (5), D. Carr (4), M. Milburn (3½), D. Holmes (2), S. Broome (1½), and G. Sheets (1½).

The 1985 S.C. Postal Champion is **Ed McCauley**. Although some games continue Ed has an insurmountable lead. Congratulations Ed!!

ELECTION RESULTS

Three amendments were proposed at the annual SCCA business meeting. These amendments were all passed by subsequent mail ballot. Only one person was nominated in each of the categories of officers. These individuals were elected unanimously by mail ballot. Given below is a copy of the official ballot with corresponding vote tallies. Our thanks to Gale Nicolet for again serving as teller.

1. Amendment #1 - David Williams.

To amend Article V(A) to change the name of the SCCA NEWS.

* * * VOTE FOR ONE OF THE FOLLOWING: * * *

- 15 ☐ Change the name to S.C. CHESS BULLETIN.
18 ☐ Change the name to PALMETTO CHESS.
0 ☐ Change the name to _____
5 ☐ Leave the name SCCA NEWS.

2. Amendment #2 - Marion Mahaffey.

To amend Article III(D) to eliminate the mail ballot for the election of officers, declaring instead a plurality vote of the membership present at the annual business meeting to elect the officers.

23 ☐ YES 15 ☐ NO

3. Amendment #3 - Marion Mahaffey.

To amend Article VI to eliminate the mail ballot for amendments to the Constitution, declaring instead that a 2/3 majority vote of the membership present at the annual business meeting may pass amendments to the Constitution.

21 ☐ YES 17 ☐ NO

4. Election of Officers - Selection Committee.

The following people were nominated as candidates for positions as S.C.C.A. officers.
Please either mark "YES" for the candidate or write in the name of your candidate.

PRESIDENT

38 ☐ ROBERT (JOHN) MCCRARY

0 ☐ _____

SECRETARY

38 ☐ DON LEMASTER

0 ☐ _____

VICE-PRESIDENT

38 ☐ ROBERT F. STRICKLAND

0 ☐ _____

TREASURER

38 ☐ PAT HART

0 ☐ _____

1987 S. C. Closed Championship
D. Carr vs. R. Zaragoza
Pirc Defense

1 e4 d6 2 d4 g6 3 Nf3 Bg7 4 Nc3 Nf6 5 Bg5 Bg4

I don't like the idea of trading off Black's QB early in this position. It has some point in positions where Black can bring some pressure to bear on White's QP or on the squares d4 and/or e5; but that is not the case here. Nonetheless, it is sometimes played in such positions by better men than I. I would suggest, though, some of the book alternatives: 5--c6, or 5--Nbd7, or 5--h6.

6 h3 Bxf3 7 Qxf3 c6 8 O-O-O

This is the critical point. White is threatening e5, either quickly or after some preparation, in conjunction with moves such as Bc4 and central play with the rooks. To meet this threat Black chooses a line that seems to have everything going for it: a quick counter-attack, White's bishop forced to a bad square at g3, and control of e5. It proves a disaster. What should Black do? I suggest simply 8--O-O, so that on 9 e5 Black could play Ne8. It will be a tricky game to play, but if Black can avoid giving White too many targets, he should be able to hold.

8--Qa5 9 Qe3 h6 10 Bf4 e5 11 dxe5 dxe5 12 Bg3 Nbd7 13 Bc4 O-O 14 Rd6 b5

White has taken absolute control of the queen file, and the Black queen finds herself in the way of the counterattack.

15 Bb3 Qc7 16 Rhd1 a5 17 a3 b4

Black does not realize the trouble he is getting into; otherwise he might try to complicate with 17--a4 18 Ba2 b4 19 axb4 a3. White would have more to worry about in return for the pawn.

18 Na4 Kh7

Now he knows; this is equivalent to passing his turn. But just try to find better moves: 18--c5 19 Bd5; or 18--Rfe8 19 Qd3 Rad8 20 Qc4. Trading NP's doesn't help either.

19 Nc5

19 Qd3 would have been better. If R (either) d8, White can play Bxe5.

19--Nb6 20 Bxe5 Ng4! 21 hxcg4 Bxe5 22 Rh1!

The front rook can't move, but this is good.

22--h5?

On 22--Bg7, White must find 23 e5 and N-e4-f6. Black is still hoping to take the R.

23 Rxh5! gxh5 24 Qh6+ Kg8 25 Rg6+ Resigns

P. Lawrence vs. M. Cyrus
1987 S. C. Closed Championship
Larsen's Opening

1 b3 e5 2 Bb2 Nc6 3 e3 Nf6 4 Bb5 e4

An interesting idea; more usual would be 4--d6.

This opening, in which the Black KP is enticed into the center in order to attack it, is subtle and difficult, and even such an experienced player as Bent Larsen has had some quick disasters from the White side. This game illustrates several interesting points.

5 Bxc6?

Apparently White was afraid of a6, and so avoids the immediate and superior 5 c4. (5 d3 would also be good.) But on 5 c4 a6 6 Bxc6 White is a tempo ahead of the game. Now Black has support for his center.

5--bxc6 6 c4 d5 7 Ne2 Bd6 8 d4?

This gives Black an advantage that should be permanent and decisive. The remaining White B will be blocked behind his own pawns forever--the exemplary "bad bishop". Black can attack the kingside with f5-f4 in conjunction with his two bishops; for the long term there is no effective defense. Note that if White plays c5, it just makes matters worse.

8--0-0 9 Nbc3 Bg4 10 h3

White has to try to find some counterplay somewhere against the threats just described; here (or next move) he could try for it with 10 cxd5 cxd5 11 Nb5. If 11--Bb4+ he plays 12 Bc3! offering the exchange of bishops, and after 12--Be7 13 Ba5 can be played; if 13--Ne8 14 Rc1 with advantage. The trouble is, of course, that Black can play 11--Be7 directly; 12 Rc1 Ne8, and White will be forced back.

10--Be6

It is better to play the B to d7, controlling b5.

11 cxd5 cxd5 12 Rc1 c6 13 O-O Qd7

This turns out well, but the thematic Ne8 and f5 would have been better.

14 f3

Better was 14 Nf4. If Bxf4 both players have bad bishops. The possibility of this move shows the flaws in --Be6 and Qd7.

14--Bxh3!? 15 Qe1?

The sacrifice may or may not be good, but it is absolutely essential for White to accept it; otherwise he is simply a pawn down with a collapsing position. Consider 15 gxh3 Qxh3 16 Nf4 Bxf4 17 exf4. Black can get either material equality or perpetual check--both of which are a lot better for White than what happens.

15--exf3 16 Rxf3 Bg4 17 Rf1 Rae8 18 Nf4 Qe7 19 Kf2 Nh5 20 Nxh5 Qh4 21 g3 Qh2 mate.

1987 SC Closed Championship

Bill Corbett vs. Paul Tinkler

French Defense

1 e4 e6 2 d4 d5 3 e5 c5 4 c3 Nc6 5 Nf3 Bd7 6 Bd3 Qb6 7 O-O

The Milner-Barry gambit. This is a very dangerous line, because it is so difficult for Black to find the right moves over the board; this game demonstrates the point. On the other hand, White would be well advised to avoid it against a strong computer, or in a correspondence game.

7--cxd4 8 cxd4 Nxd4 9 Nxd4 Qxd4 10 Nc3 Qxe5

Encyclopedia of Chess Openings (ECO) gives 10--a6 and works out equality. This move is preferred by other authorities also.

11 Re1 Qd6

ECO suggests Qb8 with unclear results--a position similar to what might happen in the game.

12 Nb5 Bxb5 13 Bxb5+ Kd8 14 a3

This has to be too slow for a gambit opening; it can't be worth a tempo to keep the Q from b4. Black could try to take advantage of it by playing 14--Qb6 followed by a B move and Ke7, but the move he chooses is o. k. if followed up right, perhaps even best. ECO gives 14 Qf3 for White, with a good attack in compensation for the gambit pawns.

14--Nf6 15 Be3 h5?

The first move of a bad plan; as White will show, there can't be any future in attacking with two pieces against a well-developed opponent.

What should Black play? It's tricky. 15--Be7 does nothing toward getting his K into safety and his rooks together. 15--a6 is dangerous: 16 Qa4! Rc8 17 Qa5+ Ke7 18 Bd3 and Black is hopelessly tied up. The best I've found is 15--Qb8! and if 16 Qa4 Bd6. Now Black will be able to play a6 and Ke7, bring the KR to c8, etc., with good chances of holding everything and eventually winning.

16 Qa4! Ng4 17 Bf4 Qb6 18 Be8!

The game is over for all practical purposes.

18--Nf6 19 Bg5 Qd6 20 Bxf7 Be7 21 Rxe6 Qd7 22 Qxd7+ Kxd7 23 Rfd1 Bd6 24 Bxf6 gxf6 25 Rxf6 d4 26 Be6+ Kc6 27 Rc1+ Resigns

15th Snowstorm Special - Charleston, S.C. - Feb. 22, 1987

White: Irving Rosenfeld (2012) Black: James Long (1944)

Alekhine Defense

1. e4 Nf6 2 e5 Nd5 3 d4 d6 4 Bc4 Nb6 5 Bb3 Nc6 6 e6!?

[a sharp but risky variation] fxe 7 Nf3 h6?! [a weak move but it provokes a weaker response] 8 Nh4? [overzealousness in attempting to capitalize on Black's last move. Correct was 8 0-0 and Black has problems developing] g5! 9 Qh5+ [prevents Black from castling, something he would not have been able to do anyway for quite a long time (if ever) if White had merely developed.] Kd7 10. Qg4! Qe8!

11 Nf3 Qg6 12 d5? [h4!] Na5 13 Nd4 Kd3 14 Nxe6+ Bxe6 15 dxe Nxb3 16 axb Qxc2 !? [pawn grabbing looks risky since Black is not developed] 17 0-0 Bg7 18 Nc6 Bxc3 19 bxc Qxc3 20 Rb1 Rf8 21 Bb2 Qc2 22 Qd4 Qg6 23 Rfel c5 24 Qd2 Kc7 25 Rbc1 Rac8 26 Qa5 Rf4 27 b4 [of course, 27 Qxa7 is met by Ra8] Kb8 28 bxc Nc4 29 Qb5 Rxc5 30 Qd7 Rc7 31 Qd8+ Rc8 32 Qxe7 Qe8 [a pawn down, white has a won ending] 33 Qxe8 Rxe8 34 Bg7 Re7 35 Bxh6 Re8 36 Bxg5 Rg4 37 h4 Ne5 38 Re3 Rxe6? [loses a piece, but Black is in time trouble and lost anyway] 39 f4 Nd3 40 Rxd3 Re2 41 Rh3 Rexg2+ 42 Kh1 a5 43 h5 Rxc5 44 fxc Rxc5 45 Rg1 Resigns [notes by the winner]

LPO - July 27, 1986

White: Bob Strickland Black: John Anthony

1 b4 f5 [John trounced me with this answer to my 1 b4 in Spartanburg, but I had something prepared for him this time.] 2 Bb2 e6 3 e3 Nf6 4 a3 b6 5 f4 Bb7 6 Nf3 c5 7 b5 Be7 8 Be2 0-0 9 c4 Ne4 10 0-0 Bf6 11 Qc2 Bxb2 12 Qxb2 Qf6 13 Ra2 [I didn't want the queen exchange but I wasn't about to give up the open diagonal to avoid it.] d5 14 d3 Qxb2 15 Rxb2 Nd6 16 Ne5 Nf7 17 Nxf7 Rxf7 18 Nd2 Nd7 19 Nf3 Rd8 20 Rd2 Rf6 21 d4 cd 22 ed dc 23 Bxc4 Nf8 24 Ne5 Bd5 25 Rc1 Bxc4 26 Rxc4 [that open file looks good for White's rook!] Rd5 27 a4 Nd7 [I thought a6 would have been better for Black here.] 28 Nc6 Rf7 29 Nxa7 Nc5 30 Nc6 Rd7 31 Re2 Ne4 32 Ra2 Rc5! 33 Rxc5 bxc5 34 Ra1 cd 35 Rd1 d3 36 Ne5 Rd6 37 Rxd3 Rxd3 38 Nxd3 [White's win is almost automatic now.] 39 Nc5 Kf7 40 b6 Ke7 41 b7 Nxb7 g5 42 Nxb7 g5 43 fg e5 44 a5 Kd7 45 h4 e4 46 h6 Black resigns [notes by white]

S. C. Championship; 10-17-87
Mike Cyrus vs Mark Rosser

White	Black	White	Black	White	Black
1. e4	e6	16. Qxb6	ab	31. g4	Ke5
2. d4	d5	17. a4	Rad8	32. Nd4	g6
3. Nd2	c5	18. Rfe1	Bd7	33. Ke3	Kf6(i)
4. Ngf3	Nc6	19. Nd4	Bxb5	34. Kf4	h5
5. ed	ed	20. Nxb5	Bf4	35. g5+!	Kg7
6. dc(a)	Bxc5	21. Re7	Rfe8	36. Ke5!	h4
7. Bb5?	Na7?(b)	22. Rael	Kf8	37. Nf3	h3
8. O-O	O-O	23. Rxe8+	Rxe8	38. Nh2	f6(j)
9. Nb3	Bd6(c)	24. Rxe8+	Kxe8(g)	39. gf+	Kf7
10. Bg5	Be6(d)	25. Kf1	Bxh2?!(h)	40. Ng4	Kf8
11. c3	h6	26. g3	Kd7	41. Ke6	Ke8
12. Be3	Nf5	27. Kg2	Bxg3	42. f7+	Kf8
13. Bd4	Ncxd4(e)	28. fg	Kc6	43. Kf6	g5
14. Nbx d4	Nxd4	29. b4	Kd7	44. Ne5	Resigns(k)
15. Qxd4	Qb6(f)	30. Kf3	Ke6		

(a) The first five moves are a standard introduction to one of the lines in the Tarrasch Variation against the French Defense. It appeared several times during the match between Karpov and Korchnoi in the 1975 World Championship cycle. Here however, White is inaccurate. dc should be delayed until Black has spent a tempo to develop the KB. 6. Bb5, Bd6; 7. dc is usual.

(b) Now Bb5 is a mistake. Black should answer with 7. ..., Bxf2+; and if 8. Kxf2, Qb6+; and regains the piece remaining a pawn up.

(c). Even so, Black is tempo ahead of the usual variation and so has nothing to fear. White's usual plan here is to overprotect the d4 square, tie down Black's minor pieces, exchange them and try to win the weak QP. Black's counterchances are based on keeping the minor pieces active.

(d) I don't like this. It's passive and that's inconsistent with what Black should strive for. 10. ..., f6 is probably bad because it weakens the e6 square if White should be able to plant a N at d4. But what about 10. ..., Qb6;? Black could follow up with ..., a5; and ..., a4; unless White advanced his a-pawn too. That advance would leave White with weak Q-side squares for Black to aim his minor pieces at.

(e) Now Black elects to exchange minor pieces ...

(f) ... and queens. The resulting pawn islands leave him with hopes only for a draw.

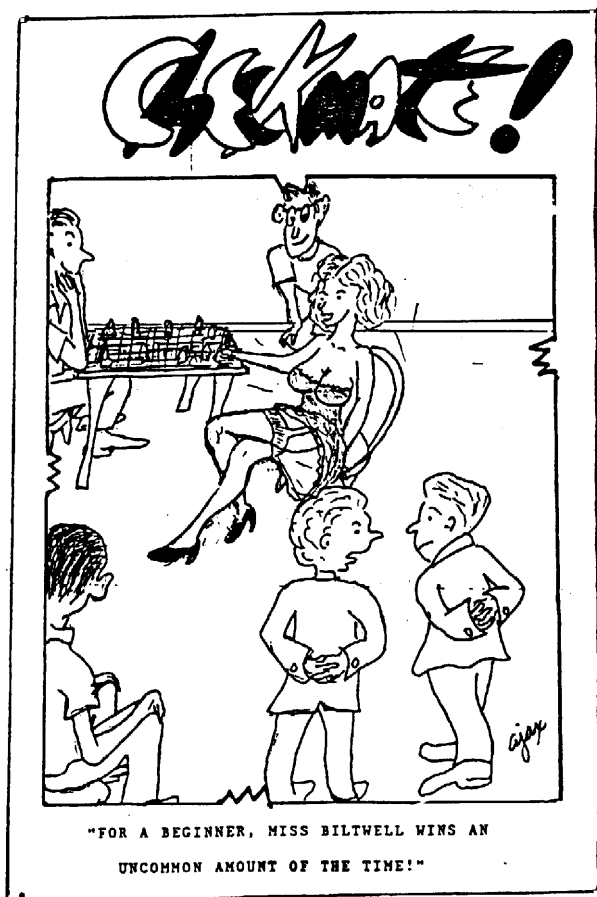
(g) I'd guess that White may even have been seeking the draw; but Black, with his next move, reveals that he can't stand the thought of one.

(h) Fischer did this sort of thing against Spassky in Game 1 of the Reykjavik match. Black is not obliged to try this. Patient defense with the K and the B should suffice to hold matters. 25. ..., Bc1; is a start.

(i) 33. ..., f5; is necessary. Black may still draw if he can compel (or induce) the White K and N to let him at the Q-side pawns. One possible line is 33. ..., f5; 34. gf, gf; 35. Kf3, h5; and if 36. Kg3, Ke4-d3; and Black will either get the Q-side pawns or queen (!) his f-pawn. After the text, however, White closes everything down.

(j) Everything else is suicide too. 38. ..., b5; 39. a5! or 38. ..., Kf8; 39. Kxd5.

(k) It's mate in one.



OTB Ratings of S.C. Chessplayers- Compiled by
David Williams and Harry Hooper

11

1.	BESSER,	JOCHEN	2348	S
2.	DE GUZMAN,	ERNESTO	2285	R
3	POHL,	KLAUS	2281	S
4.	FERGUSON,	RANDAL G.	2183	R
5.	WILLIAMS,	WAYNE GOODMAN	2183	R
6.	McCAULEY,	EDWARD O.	2145	Q
7.	BERRY,	JACK J.	2118	Q
8.	ZEIMETZ,	JOSEPH	2117	Q
9.	SMELTZER,	JEFFREY R.	2106	Q
10.	TINKLER,	PAUL E.	2073	P
11.	STEINBACH,	MICHAEL B.	2069	Q
12.	HYDER,	M. LEE	2054	Q
13.	HART,	PATRICK D.	2051	Q
14.	ABRAMS,	HARRY LEE	2031	P
15.	ROSENFELD,	IRVING	2021	P
16.	CORBETT,	CLAUDE, W., III	2019	Q
17.	WILLIAMS,	DAVID KNOX	2017	P
18.	MATHEWS,	SPENCER R., JR.	2014	P
19.	WILSON,	J. FRED	2006	P
20.	FISH,	DENNIS L.	1994	P
21.	COHEN,	RICHARD	1991	O
22.	PESCHKE,	MIKE	1982	O
23.	ZARAGOZA,	ROGELIO S.	1978	P
24.	BUSH,	MICKEY	1977	P
25.	CARR,	DAVID E.	1963	O
26.	FRAIDY,	GREGORY A.	1947	O
27.	SHAW,	STEVEN J.	1939	O
28.	MURD,	SPENCER P.	1937	P
29.	HAM,	MICHAEL W.	1930	P
30.	BLANKS,	LINDSAY E.	1918	O
31.	CAUSEY,	DAVID Y.	1918	O
32.	PURVIS,	LEE D.	1900	O
33.	TYMA,	EUGENE M.	1892	O
34.	PATERSON,	ARTHUR R.	1882	N
35.	GINSBURG,	MILTON	1879	O
36.	VONDERLIETH,	JOHN R.	1866	O
37.	HYATT,	JAMES C.	1864	O
38.	REED,	WINSTON D.	1853	N
39.	CHANDLER,	ALLEN L.	1838	N
40.	MURR,	KENNETH R.	1831	N
41.	VAN HALL,	RICHARD W.	1825	N
42.	BRICKENSTEIN,	BILL	1820	N
43.	EFIRD,	ROBERT A.	1819	P
44.	CAIL,	DOUG	1815	N
45.	HOLMES,	DOUGLAS R.	1814	N
46.	MAHAFFEY,	MARTIN M.	1811	N
47.	KEEPLER,	MANUEL	1802	N
48.	LOWDER,	PHILLIP W.	1792	N
49.	PLAYFAIR,	SAMUEL	p. 1787	
50.	CYRUS,	MICHAEL STEVEN	1782	N
51.	STRICKLAND,	ROBERT F.	1777	N
52.	RAMSEY,	ROBER B	p. 1770	
53.	MAHAFFEY,	MARION E.	1765	O
54.	CARLESS,	DAVID W.	p. 1764	
55.	LEAHY,	JOHN T.	1760	M
56.	SIMMONS,	ROBERT M.	1754	M

113.	ROSSER,	MARC A.	p. 1539
114.	TICHENOR,	CLARENCE B.	1538 K
115.	LEMMONS,	ARTHUR M.	p. 1529
116.	WOLFE,	IAN C.	1528 K
117.	AMMONS,	CHARLES	1524 K
118.	SHEETS,	GARY	1521 K
119.	HORN,	PAUL A.	p. 1518
120.	KLATTE,	ROSS A.	1513 K
121.	TAEFI,	TARGKH	1510 K
122.	ALLEN,	MARK S.	p. 1510
123.	GALDONEZ,	ROBERT G.	1508 K
124.	CABANISS,	HENRY H	1507 K
125.	BERENYI,	NICHOLAS M.	1501 K
126.	JOHNSON,	DONALD S.	1496 J
127.	McCRARY,	ROBERT J.	1488
128.	PILAUD,	WILLIAM	p. 1487
129.	RENAU,	DAVID	1483 L
130.	JACOBSON,	GUY	p. 1483
131.	PEACE,	GREGORY A.	p. 1464
132.	McNAB,	T. SHERLOCK	1459 J
133.	HANLON,	JAMES D.	1457 K
134.	BURRIS,	RONALD W.	p. 1452
135.	KINZIE,	MICHAEL C.	p. 1452
136.	ODDY,	KYLE J.	1451 J
137.	LEGLER,	JOHN	1447 J
138.	WIEST,	ANDREW	p. 1441
139.	NICOLET,	GALE A.	1434 K
140.	CAVENDISH,	LYNN M.	1429 J
141.	JACKSON,	ANDREW A.	1416 J
142.	NEWTON,	WILLIAM	1409 J
143.	WOOD,	RAYMOND S.	1408 J
144.	STUCKER,	RICHARD O.	1405 J
145.	RUTLEDGE,	RONALD W.	1399 J
146.	BARBER,	EARL CARLTON	1392 I
147.	GROVER,	CARL	p. 1386
148.	CATIZONE,	JOHN R.	p. 1381
149.	LEWIS,	!EROY E.	1380 I
150.	ADAMS,	GREGORY W.	p. 1374
151.	WEST,	KYLE R., JR.	p. 1374
152.	BROCKMAN,	LOUIS R.	1372 I
153.	KOZIARSKI,	ROBERT	p. 1372
154.	CASSEDY,	BRIAN	1371 J
155.	ALLEN,	GARY G.	p. 1366
156.	MOLNAR,	PAUL J.	p. 1365
157.	ARGENIO,	FREDERICK R.	p. 1363
158.	MILLER,	GEORGE T., JR.	1359 J
159.	McCURDY,	DANIEL W.	p. 1359
160.	WILLIAMS,	JACK L.	1354 I
161.	STEWART,	JAMES D.	1343 I
162.	WICKRAMASINGHE,	PANI H.	1342 I
163.	WILLIAMS,	BERNARD A.	1330 I
164.	JANNIK,	GERALD T.	1328 I
165.	HUNSICKER,	KEVIN M.	p. 1324
166.	KING,	ROY A.	p. 1323
167.	CRANE,	KEN	1318 J
168.	FOLK,	JAMES	1315 I

169.	SIMEONE,	ARTHUR B.	1310 K
170.	BADDAR,	MOHAMMAD	p. 1307
171.	HUSPENI,	PAUL J.	1299 H
172.	PLOTCHYK,	WILLIAM V.	1291 I
173.	BROOME,	STEVE	p. 1290
174.	O'SHIELDS,	ROGER L.	p. 1288
175.	WADE,	MICHAEL THOMAS	p. 1286
176.	FLEMING,	JAMES I.	p. 1284
177.	NIMS,	BRUCE G.	p. 1279
178.	BRIDGES,	M. BARRY	1269 H
179.	TRUBY,	HENRY S.	p. 1267
180.	NICHOLS,	MICHAEL E.	1257 H
181.	SHAW,	ANDY M.	p. 1256
182.	PFFISSTERHAMMER,	ALFONS	1255 H
183.	NEAPOLITAN,	RICHARD C.	1253 H
184.	SMITH,	ROBERT W.	1235 H
185.	LOWRY,	ERNEST	1232 H
186.	RUSSELL,	FREDERICK M.	1221 H
187.	ROBINSON,	LEONARD B.	p. 1221
188.	BROWN,	ROBBIE	p. 1220
189.	FISHER,	MICHAEL	p. 1220
190.	MILLER,	JAMES R.	p. 1219
191.	WILLIAMS,	DENNIS E.	p. 1206
192.	CONKLIN,	LARRY W.	1189 G
193.	BROWN,	STEPHEN P.	p. 1184
194.	MILLS,	MARK	p. 1184
195.	WILHELM,	THOMAS E.	p. 1181
196.	VEES,	MANFRED R.	1169 G
197.	SIMMONS,	WILLIAM E.	p. 1159
198.	JOHNSTON,	DALE L.	p. 1155
199.	BRODIE,	MICHAEL J.	p. 1151
200.	KOLB,	R. FRANK, II	p. 1139
201.	HOOPER,	HAROLD A.	1125 G
202.	DUNCAN,	KEVIN	p. 1125
203.	LOUDERMILK,	GARY	p. 1121
204.	DABROWSKI,	JAN	1119 G
205.	GALLOWAY,	DONALD L.	1117 G
206.	CHAPPELL,	HOWARD L.	p. 1112
207.	PASCHAL,	BUDDY	p. 1098
208.	STAMEY,	JIMMY	1096 G
209.	CHATHAM,	ROBERT L.	p. 1096
210.	SCHENKEL,	MARIO	1080 H
211.	EUBANKS,	WILLIAM A.	p. 1065
212.	SCHWARTZ,	JACOB BENJAMIN	1064 H
213.	MILLER,	BUDDY A.	1060 F
214.	BROWN,	CHRIS	p. 1060
215.	CORREA,	RAFAEL, JR.	p. 1056
216.	WAGNER,	LARRY V.	p. 1046
217.	HATFIELD,	GARY L.	p. 1029
218.	CARLISLE,	JAMES H.	1000 G
219.	KLATTE,	KEN	p. 0981
220.	LESSLER,	CHARLES A.	p. 0976
221.	BACCHI,	PHILIP M.	p. 0936
222.	BABIN,	FRED	p. 0899
223.	FULLER,	GERRY E.	p. 0887
224.	GOOLSBY,	RICHARD	p. 0876

57.	TURNER,	JERRY N.	1744 O
58.	STOVER,	J. KARL	p. 1743
59.	MILBURN,	MICHAEL E.	1742 M
60.	THURMOND,	RUSSELL	1740 N
61.	FLOYD,	BILL	1734 N
62.	CHROMCZAK,	THOMAS	1732 M
63.	LANDAU,	MICHAEL	1729 M
64.	OLMSTED,	FREDERICK A.	1723 M
65.	HITE,	EVERETT E.	1722 M
66.	CLINGAN,	MICHAEL N.	1719 M
67.	WEYERMANN,	CARL	1718 M
68.	DISHER,	GEORGE	1710 M
69.	LINDSAY,	OPIE D.	1705 N
70.	VREDE,	ELTON E.	1705 M
71.	D'ALENZIO,	GUY M.	p. 1696
72.	HERRMANN,	PAUL R.	p. 1690
73.	CORBETT,	JOSEPH S.	1688 M
74.	FOLTS,	ROBERT A.	1683 L
75.	EVERETT,	FRANKLIN D.	1681 M
76.	LEMASTER,	DON	1680 M
77.	PETER,	JOHN R.	1679 M
78.	WILLIAMS,	JIM	1679 M
79.	KLUGE,	MARK D.	p. 1675
80.	WALL,	STEVEN B.	1662 L
81.	AUSTIN,	DONALD	p. 1662
82.	PUTNAM,	WILLIAM A.	1659 L
83.	WILLIAMS,	DAVID C.	1658 L
84.	BRYANT,	RALPH G.	1655 L
85.	NORMAN,	HOBERT E.	p. 1653
86.	McNEIL,	LUTHER S.	1648 L
87.	WIGGINS,	LAWTON	1648 L
88.	DE NICOLAS	ARTURO MARTIN	1646 M
89.	DILLARD,	LEROY	p. 1639
90.	WHITE,	J. HENRY	1635 L
91.	CRAWFORD,	JOHN N.	1634 L
92.	HUGHEY,	JAMES E.	1632 M
93.	VERONEE	ALVIN R., JR.	1622 L
94.	MANESS,	GREGORY E.	1618 L
95.	JOY,	ARTHUR C.	1615 L
96.	CARRANO,	JOE	1611 L
97.	LAWRENCE,	PHILIP L.	1611 L
98.	HUGHES,	LAWRENCE E.	p. 1611
99.	WEISS,	JAMES O.	1610 M
100.	STOUDEMAYER,	TULLY C.	1606 L
101.	HAWTHORNE,	BENJY F.	1602 L
102.	KNIPPENBERG,	WILLIAM H.	1599 L
103.	DORN,	JOHN-MATT	p. 1595
104.	HAYMOND,	JOHN W.	1592 L
105.	ROSBOROUGH,	JOHN C.	p. 1583
106.	IBARRA,	JAIME E.	1572 K
107.	CHESHIRE,	RICHARD A.	1569 K
108.	ITIN,	JERRY	1554 L
109.	BLAND,	WILLIAM R., JR.	1547 L
110.	WEBER,	WALLACE J.	1547 K
111.	GWALTNEY,	JAVY R., III	1546 K
112.	SMITH,	VIRGIL	1545 K

225.	FUDENBERG,	H. HUGH	p. 0842
226.	WILLIAMS,	ROGER	p. 0826
227.	CORBETT,	BRIAN A.	p. 0763

POSTAL RATINGS OF S. C. PLAYERS

(From last two USCF ratings lists)

compiled by Mickey Bush

1	Edward McCauley	2200	41	Bill Floyd	1584
2	Allen Chandler	2134	42	Roy King	1581
3	Lee Myder	2055	43	Winston Reed	1578
4	Randall Ryan	2040	44	Joseph Corbett	1562
5	Harold M. Bush	2009	45	Buddy Paschal	1541
6	Pat Mart	1984	46	David McEachen	1526
7	D. M. Scott Jr.	1972	47	John Dorn	1511
8	John Vonderleith	1964	48	Earl Barber	1480
9	Samuel Playfair	1962	49	Andrew Jackson	1480
10	Irving Rosenfeld	1930	50	Gary Sheets	1478
11	Claude Corbett	1924	51	Thomas Chromczak	1471
12	Javy Gwaltney	1883	52	Danley Reed	1432
13	John Crawford	1879	53	Jesus Lozano	1378
14	Jack Berry	1864	54	Michael Kinzie	1324
15	Arthur Peterson	1864	55	Frank Williams	1310
16	Wayne Williams	1842	56	Mathew Savage	1249
17	Virgil Smith	1835	57	Leroy Lewis	1245
18	Richard Cheshire	1832	58	Paul Watson	1213
19	Don Lemaster	1828	59	August Mahon	1140
20	David Melandre	1811	60	Troy Motte	1140
21	David Williams	1786	61	James Miller	1124
22	Robert Strickland	1772	62	Brian Kantsiper	1114
23	Elliot Schwartz	1764	63	Alfred Spruill	1080
24	James Slaton	1759	64	Robert McDonald	1077
25	Thomas Hutheson	1740			
26	Lynn Cavendish	1712			
27	Sherlock McNab	1712			
28	Mikell Johnson	1702			
29	Karl Stover	1693			
30	James Hyatt	1691			
31	De Nicholas Martin	1684			
32	Dennis Fish	1683			
33	Clarence Tichenor	1670			
34	Lawton Wiggins	1659			
35	Paul Molnar	1651			
36	John Raymond	1650			
37	Mark Kluge	1649			
38	David Miller	1622			
39	Doyle Day	1619			
40	Donald Slade	1615			

INTER-CLUB MATCH Sep 22, 1987

Greenville		Spartanburg	
W. Williams	1-0	D. Williams	
Fish	.5-.5	Bush	
Corbett	.5-.5	Mathews	
Frady	1-0	Austin	
Hughes	1-0	Seko	
Wells	0-1	Dillard	
Long	0-1	Goran	
Russell	0-1	Rutledge	
Ortiz	0-1	Barber	
Hooper	1-0	Miller	
Pfisterhammer	0-1	Yarborough	

5-6

CROSSTABLES

GAME/30 SPECIAL I
11-21-87
MYRTLE BEACH S. C.

		NAME	ROUND						
			1	2	3	4	5	6	
1	IRVING ROSENFELD	2021	W12	B13	W16	B13	B15	W12	5
2	MILTON GINSBURG	1879	B13	W17	B15	B10	W16	B11	3
3	PHILLIP W. LOWDER	1775	W14	B10	B14	W11	B17	B16	3.5
4	DAVID W. CARLESS	1764/9	B15	B22	W13	W17	X	X	1
5	MARION E. MAHAFFEY	1753	W16	B19	W12	B16	W11	B18	4
6	RUSSELL M. THURMOND	1740	B17	W15	B11	W15	B12	W13	5
7	STEVEN B. WALL	1662	W18	B12	W10	B15	W13	B20	3
8	CHARLES AMMONS	1524	B19	W11	B15	W12	B19	W15	5
9	DAVID RENU	1483	W20	W15	B19	B16	W18	B12	1
10	ANDREW WIEST	1441/5	B20	W13	B17	W12	B12	W13	3.5
11	DANIEL W. MCCURDY	1359/12	W22	B18	W16	W20	B14	W21	2
12	KEVIN M. HUNSICKER	1324/9	B11	W17	B20	B18	W10	W19	3
13	STEVE BROOME	1284/11	W12	B20	W22	B19	W17	B10	2.5
14	MICHAEL E. NICHOLS	1257	B13	W19	B21	W22	W11	B18	2
15	JIMMY W. MORGAN	1200(E)	W14	B16	W18	W17	X	X	1
16	BUDDY A. MILLER	1060	B15	W21	B11	W19	B20	B17	3.5
17	CHARLES A. LESSLER	976/5	W16	B12	W18	B14	B15	W16	2.5
18	TODD BOYLE	UNR	B17	W11	B17	W12	B22	W14	1
19	DONNA C. BOUTWELL	UNR	W18	B14	W19	W13	B21	B22	2
20	WILLIAM D. BOUTWELL	UNR	B19	W13	W12	B11	W16	W17	2.5
21	DONNY SCOTLESS	UNR	W10	B16	W14	B19	W13	B11	3
22	SCOTT TRANUM	UNR	B11	W14	B13	B14	W16	W19	2

Charleston Classic VII
TD - Donald Lemaster

August 22 - 23, 1987

#	Player	Rating	Round					Score
			1	2	3	4	5	
1.	Tom Friedel	2399	W28	W18	W12	D3	W4	4.5
2.	Klaus Pohl	2308	W13	W17	D5	W6	W3	4.5
3.	Rex Blalock	2189	W14	W19	W7	D1	L2	3.5
4.	Edward McCauley	2141	W21	W34	D8	W5	L1	3.5
5.	Jack Berry	2115	W16	W20	D2	L4	W10	3.5
6.	Donny Gray	2063	W23	D11	W33	L2	W17	3.5
7.	Harry Abrams	2001	W25	W15	L3	D11	W19	3.5
8.	Michael Ham	1918	W26	W32	D4	D12	D9	3.5
9.	James Blanning	1781	L15	W25	W23	W14	D8	3.5
10.	John Haymond	1480	W33	L12	W28	W20	L5	3.0
11.	John Leahy	1705	W37	D6	D18	D7	D12	3.0
12.	Irving Rosenfeld	2024	W24	W10	L1	D8	D11	3.0
13.	John Crawford	1591	L2	W26	W16	D19	D20	3.0
14.	Robert Folts	1583	L3	W27	W15	L9	W22	3.0
15.	Robert Galdonez	1335	W9	L7	L14	W23	W27	3.0
16.	Jaime Ibarra	1551	L5	W36	L13	W30	W24	3.0
17.	Lindsay Blanks	1914	W30	L2	1/2	W18	L6	2.5
18.	John Vonderlieth	1918	W29	L1	D11	L17	W26	2.5
19.	Douglas Holmes	1815	W27	L3	W21	D13	L7	2.5
20.	Robert Strickland	1760	W36	L5	W24	L10	D13	2.5
21.	Scott Hoyman	1566	L4	W30	L19	L26	W31	2.0
22.	Javy Gwaltney	1539	D35	L33	W32	D28	L14	2.0
23.	Charles Ammons	1535	L6	W37	L9	L15	WF	2.0
24.	William Pilaud	1511	L12	W31	L20	W32	L16	2.0
25.	James Hanlon	1494	L7	L9	L27	WF	W32	2.0
26.	Gale Nicolet	1404	L8	L13	W36	W21	L18	2.0
27.	Mark Hoeper	1368	L19	L14	W25	W31	L15	2.0
28.	Henry White	1656	L1	W29	L10	D22	---	1.5
29.	Brian Cassedy	1402	L18	L28	L31	WF	---	1.0
30.	Bernard Williams	1338	L17	L21	W37	L16	LF	1.0
31.	Michael Nichols	1249	L34	L24	W29	L27	L21	1.0
32.	Buddy Miller	1054	BYE	L8	L22	L24	L25	1.0
33.	Spencer Hurd	1959	L10	W22	L6	WITHDREW		1.0
34.	Richard Ashwell III	1720	W31	L4	WITHDREW			1.0
35.	Patrick Hart	2066	D22	WITHDREW				0.5
36.	Arthur Simeone	1332	L20	L16	L26	WITHDREW		0.0
37.	Terry Mims	NEW	L11	L23	L30	LF	---	0.0

CHARLESTON CHESS CLUB - Now meeting at the Medical University of South Carolina (MUSC) cafeteria (private dining area). Follow hospital signs on I-26. Use parking lot "G" on Bee Street. Still Wednesdays from 7 - 11 PM.

PALMETTO CHESS CLUB: Now meeting Thursday evenings at the Tremont Motor Inn on Knox Abbott Dr. in West Columbia.

87'S.C.CLOSED CHAMP

TOURNAMENT NO. 871

COLUMBIA

SC 39033

START DATE: 10/16/87 END DATE: 10/18/87 DATE RECV: 10/26/87

AFFILIATE: T5006066
 SOUTH CAROLINA CHESS ASSN
 C/O DON LEMASTER
 1471 PINE STREET
 WEST COLUMBIA

DIRECTOR: 113827
 DON LEMASTER
 1471 PINE ST

SC 29169

WEST COLUMBIA

ID	PLAYER	ST	PRE RTNG	POST RTNG	1	2	3	4	5	TOT
12186330	1 WILLIAMS, WAYNE GO	SC	2214	2224	017	W18	W15	D-3	W-8	4.0
10072140	2 FERGUSON, RANDAL G	SC	2183	2205	W13	D-3	W14	D-4	W-8	4.0
12189850	3 FISH, DENNIS L	SC	2018	2108	W-5	D-2	W10	D-1	W-6	4.0
10214033	4 POHL, KLAUS A	SC	2325	2317	W12	W-9	W-8	D-2	L-1	3.5
10211808	5 BERRY, JACK J	SC	2091	2090	L-3	W13	W-9	L-6	W11	3.0
10214360	6 TINKLER, PAUL E	SC	2073	2085	L-9	W12	W19	W-5	L-3	3.0
10213401	7 ABRAMS, HARRY LEE	SC	2034	2032	L-8	011	W17	D15	W12	3.0
12478269	8 PURVIS, LEE D	SC	1900	1981	W-7	W19	L-4	W10	L-2	3.0
10214432	9 CORBETT, III CLAUD	SC	2019	2026	W-6	L-4	L-5	D13	W15	2.5
10212685	10 WILLIAMS, DAVID KN	SC	2017	2006	W11	D15	L-3	L-8	W17	2.5
12335210	11 VONDERLIETH, JOHN	SC	1866	1890	L10	D-7	W16	W14	L-5	2.5
10240296	12 BRODIE, MARK D	NC	2020	2016	L-4	L-6	W18	W19	L-7	2.0
11367917	13 GRAHAM, CURTIS ADR	NC	1995	1975	L-2	L-5	B--	D-9	D14	2.0
10404878	14 CARR, DAVID E	SC	1963	1951	018	W17	L-2	L11	D13	2.0
12462234	15 HOLMES, DOUGLAS R	SC	1814	1821	B--	D10	L-1	D-7	L-9	2.0
12333730	16 LOWDER, PHILLIP W	SC	1792	1787	L19	B--	L11	L17	W18	2.0
12472149	17 ZARAGOZA, ROGELIO	SC	1978/12	1939	D-1	L14	L-7	W16	L10	1.5
12421976	18 FRADY, GREGORY A	SC	1947	1907	D14	L-1	L12	B--	L16	1.5
10213347	19 HART, PATRICK D	SC	2051	2011	W16	L-8	L-6	L12	U--	1.0

87'S.C.CLOSED/AMATEUR

TOURNAMENT NO. 8711

ID	PLAYER	ST	PRE RTNG	POST RTNG	1	2	3	4	5	TOT
10255945	1 CYRUS, MICHAEL STE	SC	1782	1836	W14	W19	W-4	D-2	W-7	4.5
12447164	2 FOLTS, ROBERT A	SC	1683	1748	W17	W-5	W10	D-1	D-3	4.0
12471680	3 WALL, STEVEN B	SC	1662	1680	D-9	W18	D-8	W17	D-2	3.5
12294370	4 AMMONS, CHARLES	SC	1524	1621	W-6	W-7	L-1	D-8	W11	3.5
11479421	5 STRICKLAND, ROBERT	SC	1777	1761	W20	L-2	W21	D12	D-8	3.0
12441058	6 RAMSEY, ROGER B	SC	1770/13	1781	L-4	W16	U--	W13	W12	3.0
12417495	7 MILBURN, MICHAEL E	SC	1742	1745	W12	L-4	W15	W-9	L-1	3.0
11329756	8 BLAND, JR WILLIAM	SC	1547	1590	W16	D-9	D-3	D-4	D-5	3.0
12498876	9 EUBANKS, KEITH	SC	0	1642	D-3	D-8	W18	L-7	W17	3.0
10214611	10 MAHAFFEY, MARION E	SC	1794	1761	D13	W13	L-2	L11	W16	2.5
10174562	11 CRAWFORD, JOHN N	SC	1634	1640	W-7	D15	D13	W10	L-4	2.5
12439891	12 OODY, KYLE J	SC	1596	1614	L-7	W20	W14	D-5	L-6	2.5
11408745	13 TICHENOR, CLARENCE	SC	1538	1541	B--	L10	D11	L-6	W18	2.5
12421801	14 ROESSER, MARC A	SC	1539/9	1520	L-1	W21	L12	L16	W19	2.0
12441947	15 SHEETS, GARY W	SC	1521	1550	D10	011	L-7	W19	U--	2.0
12498149	16 WELLS, III WILLIAM	SC	1485	1500	L-8	L-6	W20	W14	L10	2.0
12246970	17 JACKSON, ANDREW A	SC	1416	1426	L-2	B--	W19	L-3	L-9	2.0
12478199	18 LONG, GERRALD	SC	1471/5	1445	W-4	L-3	L-9	W20	L13	1.5
12100510	19 LAWRENCE, PHILIP L	SC	1611	1544	W21	L-1	L17	L15	L14	1.0
12457697	20 HAYMOND, JOHN W	SC	1592	1531	L-5	L12	L16	L18	W21	1.0
12459355	21 WIEST, ANDREW	SC	1441/5	1347	L19	L14	L-5	B--	L20	1.0

ID	PLAYER	ST	PRE RTNG	POST RTNG	1	2	3	4	5	TOT
12465424	1 WICKRAMASINGHE, PA	SC	1342	1360	W=8	W=7	W=5	L=2	W=3	4.0
12478214	2 DAWSON, JOHN C	SC	0	1417	L=3	W=8	W=4	W=1	W=6	4.0
12481722	3 BROOME, STEVE	SC	1290/6	1284	W=2	L=5	W=7	W=6	L=1	3.0
12472442	4 NICHOLS, MICHAEL E	SC	1257	1241	L=7	W=6	L=2	W=5	B=	3.0
12456642	5 MILLER, BUDDY A	SC	1060	1072	B=	W=3	L=1	L=4	X=	3.0
12498975	6 WILLIAMS, DEAN	SC	0	1040	W=	L=4	W=8	L=3	L=2	1.5
12498974	7 PURVIS, JAE MIN	SC	0	1161	W=4	L=1	L=3	U=	U=	1.0
12497873	8 BRODIE, MICHELLE D	SC	0	893	L=1	L=2	L=6	B=	F=	1.0

Letter to the Editor

Dear David,

The Grand Strand Chess Club held a game/30 tournament November 21, 1987 with 22 players. We all had a good time and really enjoyed the games. Gary Sheets, David Renza, and Steve Wall have worked hard in the club and I would like to thank them and the other members. The members of the SCCA should support them in their upcoming Can-Am tournament in March, 1988.

As Past President of the SCCA, I would ask the members to support the new president, John McCrary. Thank you, David, for your support of me over the past two years and taking on the job of Editor, and for holding the S.C. Open in '88. Thanks to Bob Strickland for his undoubted support of me and the Lancaster Chess Club. [And] for his article "Why not Lancaster" for we have held many tournaments over the past 15 years. To our new president, John McCrary, many thanks to you for the articles in the newsletter over the past years and your support. There are unnamed members that I would also like to thank.

Having held some 50 or more tournaments in the past, I would like to hold the S.C. Closed tournament in Lancaster.

There are many things that could be done to improve the SCCA that I, as president, tried. Some of them were wrong, but some of them I [knew] well were right, but could not get passed. One of the things that I could not get through and still feel would help is to increase the dues to \$10 and \$6, yrs. so that we could some day hold a guaranteed tournament.

Truly,

Marion E. Mahaffey
Past President

 * SOUTH CAROLINA CHESS ASSOCIATION *

1987 Treasurer's Report: By Patrick Hart

CASH ON HAND 10/31/86

\$ 823.33

INCOME

1986 SC Championship	+	\$913.00
Dues	+	\$580.00
Donations	+	\$21.00
Miscellaneous	+	\$.50
Tourney Ad(s)	+	\$3.00
Interest	+	\$42.83

TOTAL INCOME

+ \$ 1560.33

EXPENSES

1986 SC Championship	-	\$868.00
Magazine	-	\$505.00
Postage	-	\$122.05
Balloons	-	\$8.80
Membership Cards	-	
Envelopes	-	\$3.33
Deposit Return	-	
Affiliation Renewal	-	\$30.00
Refund(s)	-	
Miscellaneous	-	\$1.00

TOTAL EXPENSES

- \$ 1538.18

NET GAIN/LOSS

+ \$ 22.15

CASH ON HAND 10/16/87

\$ 845.48

* * * * *

Tournament Announcements

Your Editor has been placed in a rather uncomfortable position. The SCCA Constitution does not permit ads to be carried in the newsletter unless they require SCCA membership for participation. Yet, the SCCA officers have asked me to announce a scholastic tournament to be held 4/30/88 in Columbia that will be sponsored by the SCCA. Due to the fact that USCF revenue-sharing funds will be used SCCA membership cannot be required. Hence, my dilemma. Also, the Charleston CC has petitioned me to run an ad for the Snowstorm tournament in Feb. Since I cannot alter the Constitution I can only suggest that the interested reader consult Chess Life for details of these two tournaments.

THE

SPARTANBURG

Herald-Journal S.C. OPEN CHESS CHAMPIONSHIP

JANUARY 30-31, 1988

\$1,000⁰⁰ GUARANTEED

5 ROUNDS TIME LIMITS: RDS. 1-3 40/90; RDS. 4-5 40/100 SWISS-SYSTEM

ENTRY FEE: \$25, \$20 JRS., BOTH \$3 LESS IF REC'D BY 1/27

**PRIZES: \$250-150-100, TOP A, B, C, D, E EACH \$85, TOP UNRATED \$75
TROPHIES TO TOP3 AND CLASS WINNERS**

**SITE: RAMADA INN, 1000 HEARON CIRCLE, SPARTANBURG, SC 29303 578-7170
(I-85 AT HWY. 176 ON FRONTAGE RD.) SPECIAL HOTEL RATE \$39 DOUBLE**

1/2-PT. BYE AVAILABLE IN RD. 1 OR 4, BUT NOT BOTH, ACCL. PAIRINGS POSSIBLE

**SEND ENTRIES TO: DAVID WILLIAMS, 102 ELDERBERRY DR., SPARTANBURG, SC 29302
573-9861**

REGISTRATION: 9-10 A.M.; ROUNDS 10:15-2:30-7; 9:15-2

SCCA MEMBERSHIP REQUIRED, OTHER STATES OK

**MARCH 19 & 20 MYRTLE BEACH CAN-AM II 1.5-ss, 45/90 sd/30.
GRAND STRAND CAREER CENTER, 79th ave. north, Myrtle Beach, SC
EF: \$20. if rec'd by 3/18 (phone calls OK) \$25. at site.
SCCA mem. req. \$6, all others OK. **(\$720 b/30; 300 sponsor)
THREE SECTIONS EQUALLY DIVIDED; top sec: 1st \$200 2nd \$100,
middle sec: 1st \$200 2nd \$100, bottom sec: 1st \$70 2nd \$50.
REG: 9-9:45am; RDS: 10-2:15-7; 9-1:30. HR: \$35.dbl or s,
ST. JOHNS INN, 68 ave. N. ENT: GARY SHEETS, 1007 1ST AVE. S.
NORTH MYRTLE BEACH, SC 29562 (803) 249-2940. LS NC W.**

SOUTH CAROLINA CHESS ASSOCIATION

President: Robert John McCrary
1520 Senate St. #129, Columbia, SC 29201

Vice President: Robert Strickland
Rt. 1 Box 37, Smoaks, SC 29481

Secretary: Don Lemaster
1471 Pine St., West Columbia, SC 29169

Treasurer: Patrick D. Hart
P.O. Box 634, Sullivan's Island, SC 29482-0634

PALMETTO CHESS

Editor: David K. Williams
102 Elderberry Dr., Spartanburg, SC 29302

Associate Editor: Harold M. Bush
115 Elliott St., Spartanburg, SC 29301

Game Annotations: M. Lee Hyder, Spencer R. Mathews

* * * * *

Persons interested in joining the South Carolina Chess Association, a non-profit organization, should contact the Secretary. Annual dues are \$6. Junior memberships (under 19) are available for \$3.

* * * * *

RETURN POSTAGE GUARANTEED

FIRST CLASS MAIL



M. Lee Hyder
33 Longwood Dr.
Aiken SC 29801

01/89