

PALMETTO CHESS

Volume 23

Number 2



"NOW THERE SITS A COUPLE OF REAL CHESS NUTS!"

TABLE OF CONTENTS

Editor's Notes	Page 1
President's Page	2
Chess Queen Visits S.C.	3
1988 S.C. Scholastic Championship	4
Scholastic Shorts	5
The LINC	6
The Palmetto Gambit	7
Games	8
Teaching Chess to Young Children	18
Crosstables	19
A Final Note	Inside Back Cover

Unless otherwise indicated, annotated games are subject to blind review by the reviewers.

Special thanks to Ronnie Rutledge for typing assistance, Andy Jackson (Ajax) for his delightful **Checkmate!** cartoons, and Alex Dunne with whom I corresponded via E-mail over The LINC for permission to publish his notes to his game with Doug Holmes.

Don't miss Lee Hyder's game with Michael Brooks starting on page 12. I watched as much of the game as I could "live" at the "Land of the Sky Open" and went to bed thinking Lee could win it. All will be explained in Lee's notes.

Palmetto Chess was formerly the SCCA NEWS

Editor's Notes

Due to demands of family and work upon my time I have decided to resign as your editor. The past two years have been a pleasant experience for me although at times, hectic. It is rewarding that so many people have responded to my request for input. The newsletter is self-supporting in terms of the membership dues covering the expense of three issues per year. I do regret that I haven't been able to keep deadlines as I had intended. I trust that our new editor, whomever that shall be, will bring new ideas and superior skill to the task.

Larry Goldberg suggested to me a few months ago that the state associations of NC, SC, GA, and FL get together to produce a common magazine--one rivaling the best of the regional publications such as Chess Horizons. Copy would be sent by computer/modem from each state editor to Leisure Linc which would route the information to the overall editor. This would enable our SCCA membership to have as much space or more for state news as well as receive six issues per year of about 80 pages each issue. We would have, perhaps, enough readership to support advertising as well as nationally known writers. From a production standpoint the look would be similar to the current Carolina Gambit (NC) with its photographs and laser printing. Unfortunately, I recently learned from Larry that influential members of the NCCA are opposing this project. I do not expect movement on this issue soon, but I believe it is worth pursuit by the SCCA. By ourselves, we simply don't have the membership size to greatly improve our newsletter unless we get well-heeled support from one of our members.

Odds and Ends: Anthony Fowler has moved to Greenwood and is interested in starting a club. Interested parties can contact him at Long John Silver's. How to Reassess your Chess by Jeremy Silman is the best chess book I've ever seen--period. The accompanying video is slickly-produced but too brief for the price. The Palmetto CC seems to be back on its feet again. The Palmetto Chess Club Newsletter edited by Danny Purvis has some good stuff! Changes in ownership of both of Spartanburg's regional shopping malls nearly sunk plans for an exhibition by WIM Anna Achsharumova, however, due to the relentless efforts of Earl Barber the exhibition became a reality (details elsewhere in this issue).

Please send material for the next issue to John McCrary.

President's Page

by Robert John McCrary

As I write this, I am celebrating my own 25th anniversary of entering organized chess. I was a lad of 14 when I responded to an announcement of a local tournament in the Milledgeville, Georgia, newspaper on April 25, 1963. Through that tournament I joined the local club and learned about Chess Review and ultimately about state and national chess organizations. It is fitting, then, that the state scholastic championships that I helped organize came on April 30, 1988. In name of the participants' eyes I saw myself exactly 25 years ago, discovering a new world of enjoyment. The SCCA needs to maintain a regular scholastic chess program. I will recommend that next year's state scholastic championship be held about two weeks after the Snowstorm tournament, and that the SCCA organize a state high school team championship in November. I am exploring sources of outside funding that should give us some three-figure sums to continue to devote for scholastic chess next year.

On the USCF scene, there has been another surprise with the rather abrupt departure of Executive Director Gerry Dullea. The intense politics and associated litigation of recent months took its toll on Gerry, who was only the second Executive Director to have a long tenure. (The first was Ed Edmondson.) During his decade of service, Gerry accomplished many things, including the restoration of financial strength to the USCF. Al Lawrence will be interim director for a few months.

We have had about no member feedback concerning the timing of our next postal championship, but it will certainly be advertised in either our September or January issues of Palmetto Chess. Sections are still in play from the previous events. Our Over-the-board state championship will definately be at the Tremont October 7-9, so feel free to go ahead and make your plans to come!

[In reference to the vacancy for USCF Executive Director noted above, I tried to get John to apply for it, as I feel he is well-qualified, but he declined stating he'd rather not move to that area of the country (New York)-Ed.]

Chess Queen Visits S.C.

U.S. Women's Champion, Anna Achsharumova, delighted 25 participants in a simultaneous display given at the Spartanburg Arts Center on May 7. Playing in an aggressive style, Ms. Achsharumova defeated 15 opponents, but lost to Charles Walter, Danny Purvis, Mike Peschke, Mark McKinnon, and your Editor. Five players also attained draws: Wayne Williams, Spencer Mathews, Greg Frady, Javy Gwaltney, and Dan Yarborough. That the exhibition took nearly eight hours is evidence of the many hard-fought games that took place as well as the strength of her opposition. Prior to the exhibition Ms. Achsharumova granted interviews which appeared later in the Spartanburg Herald-Journal as well as a televised interview broadcast on WRET-Channel 49. Below I give my game from the simul. I'd publish others but no one gave me their scoresheet (except for my 5-year-old, that is).

White: WIM Anna Achsharumova

Black: David Williams

Benko Gambit

1 d4 Nf6 2 c4 c5 3 d5 b5 4 cxb a6 5 bxa Bxa6 6 Nc3 d6
7 e4 Bxf1 8 Kxf1 g6 9 g4! (declaring aggressive intent)
Bg7 10 g5 Nfd7 (book is 10...Nh5, 11 Nge2 Qc8 12 Kg2 Qg4+
13 Ng3 Nf4+ 14 Bxf4 Qxf4 15 h4 0-0 16 Rh3 Bxc3 17 bxc
f6. At the time I thought Nh5 a good move to hold up white
on the K-side but I feared getting the knight stuck out of
play.) 11 Nge2 0-0 12 h4 Qa5 13 h5 Na6 14 Kg2 Nc7 (Nb4 is
more aggressive but I saw no clear-cut advantage to it over
the text which is aimed at defending the e6 square against
an anticipated posting of a white knight on f4.) 15 Qd3!
Rfb8! (it may seem madness to strip the k-side of another
defender but this move serves two purposes: to increase
counter-play on the Q-side and to provide the king with an
escape square if needed.) 16 hxg hxg! (I believe it is better
to recapture with the rook pawn for several reasons. First,
white's pawn on g5 restricts the dark squared bishop, white
will be unable to use the rook file successfully [at least
I thought], and finally it is better to keep the pawn structure
intact both for the endgame and to guard the e6 square.)
17 b3? (obviously overlooking black's reply. I had expected
Qh3 followed by an all-out assault on the king by f4-f5, etc.)
Rxb3 18 Bd2 Rb2 19 Rad1 Ne5 20 Qh3 Qa6 21 Qh7+ Kf8
22 Rh3 e6 (time to create some luft) 23 Nf4 Qc4 24 Bcl Rc2
25 dxe Rxc3 26 Rxc3 Qxc3 27 e7+ Kxe7 28 Be3 Qc2 29 Qxg7
Qxd1 and white resigns as she has emerged from the complications
a rook down.

1988 S.C. SCHOLASTIC CHAMPIONSHIP

by Robert John McCrary

Kevin Eberle and Todd Boyle are the new state high school chess co-champions. Both went undefeated, and then drew their playoff game after a hard fight. Third place went to Dave Blackman in a playoff victory over Mark Sessions.

The new state elementary-middle school champion is Ken Klatte who defeated runner-up, Milton Ortiz, in the last round. Jae Min Purvis was third and Mandy Stanford was recognized as the best girl player.

This event was held April 30 at the Tremont Motor Inn in Cayce. The turnout of 19 players was modest, but nevertheless encouraging considering that our state scholastic program had been at absolute zero prior to the event. There was geographic variety among the trophy winners: Boyle, Purvis, and Stanford are from metro-Columbia; Eberle and Sessions from the Charleston area; Blackman from Saluda; Klatte from Spartanburg; and Ortiz from Greenville. Four active high school clubs were represented (each providing one of the trophy winners): Airport, Hanahan, Saluda, and Middleton High Schools.

Don Lemaster directed, assisted by John McCrary. SCCA Vice President, Bob Strickland, was there, along with Palmetto Chess Club President, Danny Purvis, and also Kyle Oody. Former state champion, Charles Walter, gave a brief lecture on how to improve, emphasizing hard work and study of the literature of chess.

Special thanks go to Doug Holmes and Dean Roesner, each of whom brought a group of youngsters. Had it not been for Doug's perseverance in resolving a transportation mix-up, Kevin Eberle would not have even come! As it is, Kevin is thinking about possibly representing our state in the National High School Championships.

Scholastic chess is a world of its own, as the directors/organizers soon learned. Early-round games went so quickly that the round starting times were accelerated. Draws were rare, although at least two stalemates were reached. The Scholar's Mate made a comeback (perhaps appropriately in a scholastic event!), as some players were very inexperienced. A few players had to learn notation as they went along, producing some of the most imaginative scoresheets I have

ever seen in the process! In general, players were better behaved than many adults, as there were no dropouts or disputes. Friendships were formed, and peals of laughter could often be heard from the skittles room.

The tournament was a success, and should be the start of regular scholastic support by the SCCA. Thanks to the USCF for funding the event through its state-assistance program.

Scholastic Shorts

Giuoco Piano- White: M. Sessions Black: R. Smith

1 e4 e5 2 Nf3 Nc6 3 Bc4 Nf6 4 Nc3 Bc5 5 0-0 0-0 6 d3
Ng4? (better h6!) 7 Bg5 Qe8 8 Nd5! Bd6 9 h3 Nf6 10 Bxf6
a6 11 Qd2 a5 12 Qg5 g6 13 Qh6 Nb4 14 Qg7 1-0

Irregular Opening- White: R. Adams Black: M. Sessions

1 c3 e5 2 Nf3 Nc6 3 Qb3 Nf6 4 Ng5 d5! 5 e4 Bc5 6 c4?
dxe4 7 f3 0-0 8 fxe4 Bg4 9 Qc2 Nd5! 10 exd5 Qxg5
11 dxc6 Qf6 12 cxb7 Qf2 0-1

Giuoco Piano- White: C. Purvis Black: K. Klatte

1 e4 e5 2 Nf3 Nf6 3 Nc3 Nc6 4 Bc4 h6 5 0-0 Bc5 6 d3
d6 7 Qe2 Bg4 8 Be3 Bxe3 9 Qxe3 Bxf3 10 Qxf3 Nd4 11 Qd1
0-0 12 Nb5 Qd7 13 a4 Qg4? 14 Nxc7 Rc8 15 Nd5 Qxd1 16 Ralxd1
Nxd5 17 Bxd5 Rxc2 18 Rb1 Ne2+ 19 Kh1 b6 20 Bb3 Rd2 21 Rbd2
Rxb2 22 $\frac{1}{2}$ - $\frac{1}{2}$

Irregular Opening: White: S. Broome Black: W. Bolton

1 e4 e5 2 Bc4 Bc5 3 Qf3 Qe7 4 d3 Nh6? 5 Bxh6 gxh 6 Ne2
Qg5 7 0-0 Nc6 8 Qxf7+ Kd8 9 Qf3 Na5 10 Bb3 Qd2??
11 Nxd2 and wins in 22

THE LINC

By Doug Holmes

We must all admit that computers are a very important part of the future. Certainly this is true in chess. However, this article is not about chess computers as one might think from reading the first two lines. This is about something quite different yet just as important. I want to talk about using computers to play people from all over the country. I personally have both types of computers. One to play against and one that allows me to play people. I must say that I am much more excited about the latter.

About four months ago, I bought the Chess Network from the USCF. I knew very little about computers, but I felt confident that the USCF would not let me down. They guaranteed me that I could play chess on the Leisure Linc, a computer bulletin board service located in Greensboro (NC), with their product without any computer knowledge. The system came complete with a phone modem and special software (see catalog for further info). It includes a free membership.

The Linc mainly specializes in chess but has some other games as well. Within just a couple of hours I was on the line playing chess. It was not perfect, but it was exciting. It took me a few days to figure out how to make the most of my package. Once everything was set up correctly, I was hooked. With my free time allotted, it allowed me to roam around through the system using menus. These outlines allow you to read and make your selection.

Now let me list some of the opportunities that I've taken advantage of. I've joined a postal ladder and soon these games will become USCF rated. I got daily reports of the World Chess Championship complete with game scores and press releases. One of the LINC masters providing analysis was National Master Alex Dunne, who writes 'The Check is in the Mail' column in Chess Life. Mr. Dunne also gives a simul each month (\$15) and I've included my game with him.

Other masters also write instructive articles ranging from beginner to expert, including opening theory and a game of the month, which are posted each month. The instruction is much better than anything I've seen in Chess Life. Other items include information on the candidate matches and the World Chess Festival. Everything posted is stored permanently in the archives for retrieval. There are also board rooms, conference rooms, electronic mail and blitz chess.

Probably the best thing about the Linc is how it will affect "postal" chess. A typical game will last about two months instead of two years. Time is counted from the minute you leave your move. Usual time limit is 20 moves in 30 days. There is no transmission time and no holidays. You are charged by the minute (\$5.00 per hour) and you call via a local number (if available) so there aren't any long distance charges. When you compare a 14 cent postcard to an 8 cents a minute cost, you can see you save both money and time. After learning the system, you will spend no more than thirty minutes a week on line. Unless you become addicted! The more you play, the more you pay.

In conclusion, an IBM (or compatible) computer is the best way to go since you will get graphics (with a graphic card installed) using the specialized software. A Commodore version is available I believe. Other brands such as Apple can certainly use the Linc, but won't get graphics as of now. That's the main advantage of buying the Chess Network. It has everything you need and little computer knowledge is required. This system can also be used just like any personal computer. Contact the Linc at 1-800-826-9688 for further information.

THE PALMETTO GAMBIT

by Robert John McCrary

Did you know that an opening variation was once named for South Carolina? The discoverer of this variation was Isaac Edward Orchard, who was born in Columbia on Dec. 6, 1853, and achieved some national recognition as a chess player before dying at the age of 54. Orchard was not the first South Carolina native to achieve national recognition in chess; Paul Morphy's father and uncle Ernest, as well as Judge A. B. Meek, were all born in our state. But Orchard may have been the first to attain prominence while still resident here.

Orchard's name first appeared in 1875, when a "T. E. Orchard" of Columbia (probably a misprint for I. E.) published a letter he had received from a New Orleans man about Paul Morphy's mental condition. I next find Orchard's name in the Philadelphia Times chess columns in 1881, where this notice appeared.

"A SOUTHERN CHESS TOURNAMENT"

"Chess players of the South and particularly of South Carolina, will hold a tourney at Spartanburg, S. C., beginning June 20. Messrs. I. E. Orchard, Thomas J. Kirkland, T. P. Villepigne, William Muller, Melvin Drew, W. R. Hale, T. R. S. Thomson and others have promised to attend, as also have Professor A. F. Wurm and John B. Bedwine, of Atlanta, Ga., who are reputed to be the coming players of the South. This will be the first grand tournament ever held in the Palmetto State."

That was not the first S. C. tournament, per se, as we know also of one in Charleston in 1859. The TIMES does not give the tourney results, but it later referred to Orchard as the "champion of the Carolinas", so it is likely that he won the event.

In a column later in 1881, the PHILADELPHIA TIMES published a game by Orchard that may have been from the Spartanburg tournament. That game, which may be South Carolina's first published one, christened the name "Palmetto Gambit". Here is the game with Orchard as white against Col. Thomson: 1.e4 e5; 2.f4 exf4; 3.g3 fxg3; 4.Nf3 gxh2; 5.Bc4 Nf6; 6.Rxh2 Nxe4; 7.Re2 d5; 8.Bxd5 Qxd5; 9.Nc3 Qh5; 10.Nxe4 Qh1+; 11.Kf2 Qxd1; and white who is a Queen and 2 pawns down, mates in two by 12.Nf6+!

It is fitting that S. C.'s first known published game should be such a dazzling little brilliancy! The TIMES credited Orchard with inventing white's third move, which he called the "Palmetto Gambit".

GAMES

B. Corbett vs M. Bush,
Greenville-Spartanburg Match 1987.

1 e4 e5 2 ♖f3 ♖f6 3 ♗c3 ♘b4 4 ♗d5

This is not as strong here as it would be if there were a ♗ at c6. Black takes his simplest path, which is to exchange, and White has lost a tempo.

4 -- ♗xd5 5 exd5 e4

5 -- O-O is simple and good.

6 ♗d4 e3?!

This is imaginative, and it eventually confuses White enough that Black gets the advantage. Objectively, it isn't good. Nor is it necessary; Black can still castle without disadvantage. If he can outplay White a pawn down, he could outplay him easier with the pawn. Now the simplest plan for White is 7 fxe3, and if 7-- ♘h4+ 8 g3 ♘e4 9 ♘f3. As we will see, the move played is all right too.

7 ♘e2 O-O 8 fxe3 c5 9 dxc6??

Throwing away all advantage. After 9 ♗b3 White is threatening a3; and if then ♘h4+ 10 g3 ♘e4 11 ♘g2 with advantage.

9 -- dxc6 10 c3 ♘d6 11 Nf3?

Moving his best piece from the center without provocation. Better 11 g3.

11 -- ♘g4 12 ♘f2 ♗d7 13 ♘e2 ♗f6 14 d3 ♘d7
15 ♘d2

White should consider e4. He has no play, and his next move just gives Black a target.

15 -- a5 16 O-O-O b5 17 h3 ♕e6 18 ♖b1 ♗g3
19 ♜f1 c5 20 ♖g5 b4
21 cxb4??

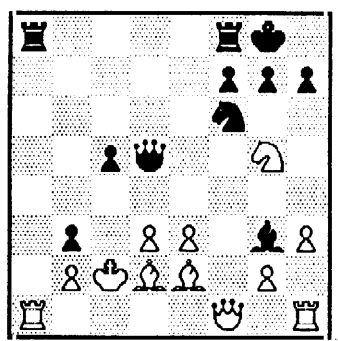
This is the last mistake. 21 c4 was the only hope, and it would offer some prospect of keeping Black out.

21 -- ♗xa2!

Deciding the game quickly. After 21 -- axb4 22 Nxex6 fxe6 Black has a big advantage, but here he wins at once.

22 ♖xa2 axb4+ 23 ♖b3 ♜c6 24 ♖a1 ♜d5+ 25 ♖c2 b3+ 26 Resigns

The continuation would be 26 ♖b1 ♖xa1 27 ♖xa1 ♜a8+ 28 ♖b1 ♜a2+ 29 ♖c1 ♜a1+.



POSITION AFTER
BLACK'S 25 ... b3

Douglas Holmes (1830) vs. Alex Dunne (2333)

(Annotated By Alex Dunne)

1. d4 d5 2. c4 c6 3. Nf3 Nf6 4. cxd5

This is a good line to play against the Slav in a simul against a higher rated opponent. It minimizes Black's winning chances (White's too), but Black is the one who has to try to win (honor).

4. ...cxd5 5. Nc3 Nc6 6. Bf4 Bf5 7. e3 e6 8. Ne5

New to me but has been played before. I have faced 8. Bb5 Bb4 with a slight edge to White and 8. Bd3 Bxd3 9. Qxd3 Be7 =.

8. ...Bd6 9. Bb5 Rc8 10. Qa4

This is a TN -- ECO gives 10. Bxc6! bxc6 11. O-O O-O 12. Rcl c5 13. Nb5 a6 14. Nxd6 with a slight edge for White.

10. ...O-O?

I (mistakenly) thought I would get good play on the queenside with this Pawn sacrifice. Apparently I have to defend with 10. ...Qb6. You have discouraged me from EVER playing this Pawn sac again.

11. Bxc6 bxc6 12. Nxc6 Qc7 13. Bxd6 Qxd6 14. Nxa7

So far, so seen -- I thought your uncastled King and awkward position of your Knight would get me counterplay. I was wrong.

14. ...Rc4 15. N7b5

How simple (now!) -- Completely refutes my two Pawn sacrifice.

15. ...Qb6 16. b4

After 16. Qd1, I would have zero play.

16. ...Ne4 17. Rcl R8c8 18. O-O h6 19. N3e2

Since 19. ...Nd2 leads to nothing, I elected to swap for complications.

19. ...Rxc1 20. Rxc1 Rxc1+ 21. Nxc1 Qc6 22. Ne2

And White answers all Black's threats. Yes, I was disappointed.

22. ...Nd6 23. N5c3 Qc4 24. Qa8+

This is OK, but White should guard his back rank first.

24. ...Kh7 25. Qb8 Ne4 26. Qb5 Qc7 27. Nxe4 Bxe4 28. Qc5

This is very strong, but maybe 28. f3 and 29. a4!

28. ...Qd7 29. b5

Black tries for a swindle which works.

29. ...e5!? 30. a4?!

The first break in a difficult game -- 30. f3 Bd3 31. Nc1!

30. ...Qg4! 31. f3 Bxf3 32. Ng3 Be4

Black has only made the win more difficult.

33. Nxe4 Qxe4 34. Qc3 Qb1+ 35. Kf2 Qa2+ 36. Kg3 Qxa4 37. Qb2! exd4

Black must open up the board. (perpetual check)

38. exd4 Qa7 39. b6 Qb8+ 40. Kf3 g5!?

Black has to gain some squares to check the White King. Your last chance may have been 41. Qc2+! and Qc7! and Black is doomed.

41. g3?! Qc8 42. b7 Qf5+

At this point I don't know if you can win or not. I think can hold.

43. Ke2 Qe4+ 44. Kd1 Qd3+ 45. Kc1 Qe3+ 46. Kb1 Qe1+ 47. Ka2 Qa5+ 48. Qa3 Qd2+ 49. Kb3 Qd3+ 50. Kb4 Qxd4+ 51. Kb5 Qe5

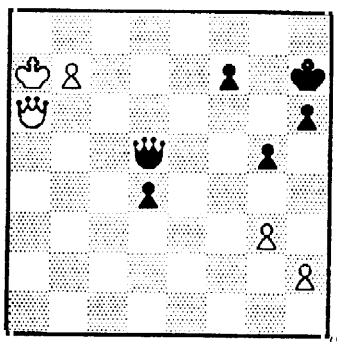
My instincts told me I was lost here. Maybe 52. Qf8!?

52. Qc5 Qe2+ 53. Kb6 Qb2+ 54. Kc7 Qe5+ 55. Qd6 Qc3+ 56. Kb8 d4

I still thought I'd lose after 57. Qf6!? preventing the Pawn advance.

57. Ka7?! Qa5+ 58. Qa6?! Qc5+ 59. Ka8 Qd5! 60. Ka7 DRAW

Doug -- this was one hell of a fight -- I hope you'll try again in my February simul -- I'll try not to sac two Pawns on specs! Alex



POSITION AFTER
WHITE'S 60 Ka7 ...

Upset

Is there a chessplayer who hasn't dreamed of winning a Big Game against a great opponent? The wonder is that it sometimes happens. The wonder for me is that it happened to me!

Michael Brooks is a fine young player from Kansas City with a USCF rating of 2560 or so--about 510 points higher than mine when this game was played. I had arrived in Asheville from Aiken after a day's work and three hours' travel, to find that I was to play him in a half hour. Here's what happened--

Brooks

Hyder

(Asheville, 1988)

1 e4	e6
2 d4	d5
3 Nc3	Bb4
4 e5	c5
5 a3	Bxc3+
6 bxc3	Ne7
7 Nf3	Bd7
8 a4	Qa5
9 Bd2	Nbc6
10 Be2	f6

According to Watson's book on the French Defense, this position is best for Black, and equal. At this point he analyzes mainly the interesting alternatives after 11 c4. The line Brooks chooses is dismissed as giving nothing, a conclusion which this game reinforces.

11 O-O	c4
12 Re1	O-O-O
13 Bf1	Ng6
14 g3	Rde8

Only after I made this move did I realize that it was a fine example of overprotection, as recommended by Nimzovich. Now Bh3 lets Black counter-attack by h5; if White exchanges pawns, Black is well placed for eventually playing e5. White commits to nothing, though, so Black soon fixes the pawn structure.

15 Bg2	fxe5
16 Nxe5	Ngxe5
17 dxe5	h5

Played after considerable thought. White's play must come from advancing the kingside pawns, and eventually f5; Black goes to block this plan and establish his own presence there.

18 h4	Ne7
19 Bf3	g6

Plan completed. White has made entries for his QB, but there is no target there. Already I was anticipating the layout of pieces that I actually

played.

20 Qc1	Nf5
21 Bg2	Rh7
22 Qb2	Bc6
23 Bg5	Rd7
24 Red1	Qc5!

The threat of Nxg3 forces queens off, followed by Black's bad bishop.

25 Qb4	Qxb4
26 cxb4	d4
27 b5	Bxg2

I thought 27 Bxc6 would be better for White.

28 Kxg2	Rd5
29 Bf6	Kd7
30 Kf3	Rc8
31 Kf4	d3

The threat of a rook entry at d4 induces White to block the position. He now wants to play g4, but Black anticipates this plan.

32 c3	Ke8
33 Rd2	Kf7
34 f3	Nd6!
35 g4	Ne8
36 Bg5	Rd7
37 Re1	Nc7
38 Kg3	Nd5
39 Rc1	Nb6
40 Ra2	Rd5

The N has done its work. Now at the first time-control, White finds that he must yield something.

41 Be3	Rxe5
42 Kf2	Rd5
43 Rg1	hxg4
44 Rxg4	Nd7
45 Rd2	b6
46 Rg2	e5
47 Rg1	Nf6
48 Rb1	R8d8?

My worst move of the game; White gets plenty of play. I should have played 48--e4.

49 a5	R5d6
50 axb6	axb6
51 Ra4	Rc8
52 Ra7+	Ke6
53 Rg7	Rg8
54 Rc7	Ra8
55 Bd2	Ra4

The second time control is met. Black has managed to hold the extra pawn, but the game is very much in doubt.

56 Rg7	Ra2
57 Rd1	Kr5
58 Rc7	Ra4
59 Rg1	Nd7
60 Rc6!	

Going for broke! I gulped, looked hard, and decided only by exchanging could I live.

---	Rxc6
61 bxc6	Nc5
62 Rb1	Nb3
63 c2	Ra8
64 Be3	b5
65 Rg1	Rc8
66 Bb6	b4!

Counterplay! Black can also play to promote a pawn.

67 cxb4	c3
68 Ke3	c2
69 Kxd3	c1Q
70 Rxc1	Nxc1+

Third time control. I was convinced I could hold this, but I wasn't sure I could keep all my own pawns on the board.

71 Kc4	Ke6
72 b5	Kd7
73 Ba5	Ne2
74 Kd5	Ra8!
75 Bb4	Kxc7

The bishop had to stay on the diagonal that covered f8 to keep the Black rook from shutting out the White K. Now Black is just able to hold one pawn long enough to get his K and N over.

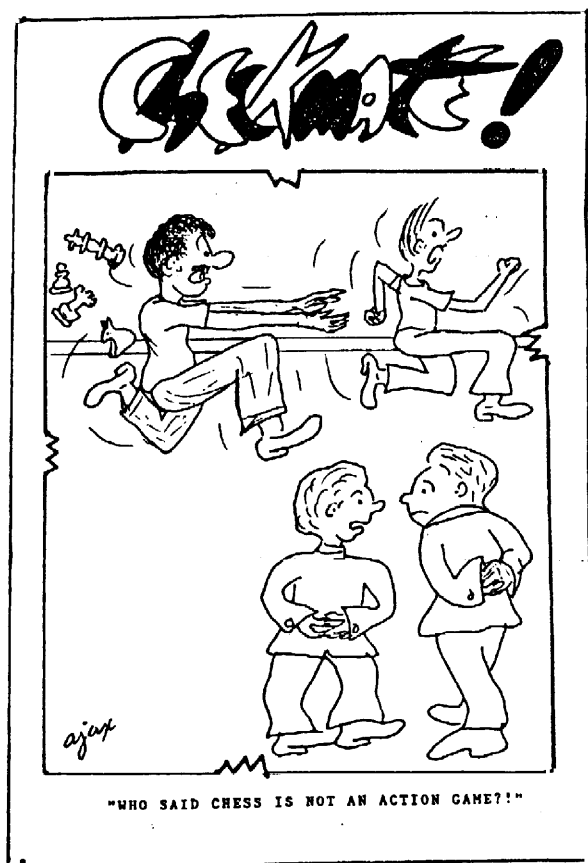
76 Kxe5	Kb6
77 Kf6	Kxb5
78 Be7	Ra6+
79 Kg5	Nc3
80 Bf6	Nd4
81 Be5	Kc4
82 f4	Ne7
83 Bf6	Ng8
84 Bg7	Kd5
85 h5	gxh5

Fourth time control! Black has lost his last pawn, but it doesn't matter any more.

86 Kxh5	Ke6
87 Kg5	Ra5+
88 Be5	Ne7
89 Kg4	Rb5
90 Bc3	Ng8
91 Be5	Nh6+

Resigns

Two forty-five a. m. There was no one around to congratulate me; even the TD's had gone to bed. Where is the cheering multitude when you want it? The kind words came the next day, when my friends saw the result; but the best part was the knowledge of having played a really good game against excellent opposition. Nothing in chess beats that!



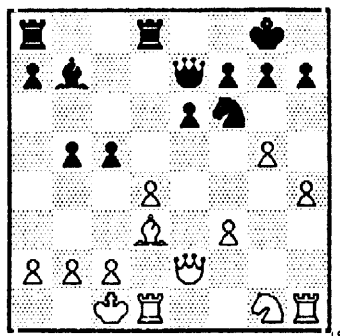
1987 S.C. Closed Championship

White: Curtis Graham Black: Jack Berry

Caro-Kann

1 e4 c6 2 Nc3 d5 3 Qf3 (This rarely played move while presenting some danger to black seems circumspect because it causes some disharmony of development.) dxe (The simplest, a more complex line is 3...Nf6 4 e5 Nfd7 [4...d4 5 exf6 dxc3 6 fxg7 cxd2+ 7 Bxd2 Bxg7 8 0-0-0 Qb6 9 Bc3+] 5 Qg3 [5 d4 e6 6 Qg3 c5 7 Nb5 cxd4 8 Nf3 a6 9 Nbd4 Nc6 10 Bd3 Qc7 11 Nxc6 bxc6 12 0-0 Nc5 13 b4 Nd3 14 cxd3+ but black can improve this linewith 6...axb & 8...Nb6] e6 6 Nf3 a6 7 Be2 c5 8 0-0 Nc6 9 Re1 Nd4 10 Bd1 Nf5 unclear Smyslov-Flohr, Budapest, 1950. But 3...d4 is not good, for instance, 3...d4 4 Bc4 Nf6 5 e5 dxc3 6 exf6 cxd2+ 7 Bxd2 exf6 8 0-0-0+) 4 Nxe4 Nd7 5 d4 (I could find only one alternative here: 5 b3 Ndf6 [or Ngf6] 6 Nxf6+ Nxf6 7 Bb2 Bg4 8 Qg3 e6 9 Be2 Bf5 10 Bd1 Bg6 11 Nf3 Bd6 with chances for both sides.) Ngf6 (even better is 5...Ndf6 with the attack on white's d-pawn. A game game Lutikov-Petrosian continued: 6 c3 Nxe4 7 Qxe4 Nf6 8 Qc2 Bg4 9 Ne2 e6 10 Ng3 Qd5=) 6 Bc4 (better than 6 Bd3 which is speculative) e6 7 Bg5 Be7 8 0-0-0 (white's development seems uncoordinated because of his k-knight being deprived of its most aggressive post. White castles Q-side in anticipation of an attack on the black king, but this seems unrealistic due to the problem he will have getting his knight and rooks into active roles. I would have opted for Ne2 and 0-0. The ensuing exchanges only help black.) 8...Nxe4 9 Bxe7 Qxe7 10 Qxe4 Nf6 11 Qe2 0-0 12 g4 (Why not now 12 Nf3 with plans to go to e5? Then, a pawn storm supported by his rooks would have more "teeth.") b5 (beginning his own "attack" and providing his problem bishop with some scope. [keep an eye on this anemic-looking fellow!]) Now, we can see that with white's knight on f3 such a move would provide white with a target in the backward c-pawn.) 13 Bd3 Bb7 14 f3 (defending

against c5 followed by Bxh1. Nf3 would lose the g-pawn but looks interesting: 14 Nf3!? Nxg4 15 Rg1 Nf6 16 Ne5, perhaps, white now doubles rooks on the g-file with some promise of a bright future. Rfd8 15 h4 c5 (of course not 15...Rxd4 because of 16 Bxh7+ followed by 17 Rxd4) 16 g5 (black threatened 16...Nxg4 17 fxg4 Bxh1, but now a subtle threat nets him the white d-pawn)



POSITION AFTER
WHITE'S 16 g5 ...

Nh5 17 Qf2 (defending the knight fork at his g3 square) cxd4
18 Nh3 (The knight finally gets into [?] the game-but the delay has weakened his attack in that the rooks have been kept out of play. A pawn storm needs support!) b4 19 Rhg1 g6 (black's K-side will now be a tough nut to crack.) 20 Be2 Qc5 (hitting the now weak c2 square) 21 f4 Ng7 22 h5 (desperately hoping to find an attack but tlhe black kingside is too solid for half-measures. White should go over to the defense.) Rac8 23 Bg4 (23 Bd3 loses a pawn but is probably a better choice) gxh5
24 Bxe6 fxe6 25 g6 hxg6 26 Rxxg6 (white must have counted on this penetration on the open file for counterchances, but he misses a fine combination) Qxc2+ 27 Qxc2 Rxc2+ 28 Kxc2 Be4+
29 Kb3 Bxg6 30 Kxb4 d3 31 Nf2 Rd4+ 32 Kc3 Rxf4 33 Resigns

Teaching Chess to Young Children

by David K. Williams

Teaching chess to young children can be a rewarding experience for both parent and child. Patience and an awareness of child development are necessary for this to be accomplished. At what age should chess be taught? Obviously, there is no pat answer to this question. Infants "actively" perceive the world through their senses. This is why infants are fascinated by rattles. Although chess pieces don't literally "rattle" they offer texture, shape, and color to be perceived by an infant. I have used large chess pieces as rattle-substitutes and they work fine. (I would caution you not to leave the child unsupervised with a chess piece, though, as a fragment could conceivably break off and be swallowed.) I suppose one could tape a plastic board above the child's crib as a mobile, but even I've not gone this far. (As a boy, though, Koltanowski taped a board above his bed and stared at it for hours to help improve visualization of the board, and, given his famous blindfold skill, I suppose it must have worked!) As children begin to say words the names of the chess pieces can be taught. My children could say "pawn" at 18 months, but were not very consistent at identifying the other pieces. I think it's best to try and teach only 1 or 2 pieces at a time. Also, children vary tremendously in the time in which they develop speech so this time frame may differ greatly with your child. As the child leaves the toddler stage, chess pieces can be introduced as toys. Don't try to teach rules yet; the child will incorporate them into his or her own fantasy-world. At a later date, the child will group them into his or her own set of rules which can become quite sophisticated. Of course, it doesn't hurt to tell the child that the knight "hops" and the rook goes "zoom!" As the child becomes interested in playing according to "your" rules remember to keep the game "fun" and let the child win most of the time. Praise your child's effort and resist the temptation to teach too much. Your child's grasp of concepts will be slow at first, but then you will be surprised when your child demonstrates quite good ideas on his or her own!

CROSSTABLES

Spartanburg CC Championship

October 13, 1987 - November 10, 1987

Director: David K. Williams

	PLAYER	ST	PRE RTNG	POST RTNG	1	2	3	4	5	TOT
	1 MATHEWS, JR SPENCE	SC	2014	2035	W-9	H--	W12	D-4	W-2	4.0
*	2 WILLIAMS, DAVID KN	SC	2006	2009	W13	W12	W-3	W-6	L-1	4.0
	3 SCHENKEL, MARIO	SC	1868	1878	W17	W-8	L-2	W-9	W-6	4.0
	4 BUSH, JR HAROLD M	SC	1977	1957	W20	W-7	L-6	D-1	W-8	3.5
**	5 BARBER, EARL CARLT	SC	1392	1410	W19	L-6	W17	H--	W11	3.5
	6 AUSTIN, DONALD	SC	1686	1711	W10	W-5	W-4	L-2	L-3	3.0
	7 ROSEBOROUGH, JOHN C	SC	1583/13	1568	W16	L-4	L-9	W15	W14	3.0
	8 KLATTE, ROSS A	SC	1513	1526	W18	L-3	W10	W13	L-4	3.0
	9 HOOPER, HAROLD A	SC	1125	1228	L-1	W15	W-7	L-3	W13	3.0
***	10 YARBOROUGH, DAN C	SC	1433/3	1417	L-6	W14	L-8	H--	W16	2.5
	11 RUTLEDGE, RONALD W	SC	1399	1386	L15	W18	H--	W12	L-5	2.5
	12 DILLARD, LEROY	SC	1634	1606	W14	L-2	L-1	L11	W17	2.0
	13 MILLER, JAMES R	SC	1251	1268	L-2	W16	W15	L-8	L-9	2.0
	14 SHUMAN, GENE	SC	0	1238	L12	L10	W18	W19	L-7	2.0
	15 PENCE, DAVID	SC	0	1288	W11	L-9	L13	L-7	W18	2.0
	16 GURAN, FRANK	SC	0	1169	L-7	L13	W19	W17	L10	2.0
	17 KLATTE, KEN	SC	974/11	1036	L-3	W19	L-5	L16	L12	1.0
	18 PFISTERHAMMER, ALF	SC	0	939	L-8	L11	L14	H--	L15	1.0
	19 SCHENKEL, CAROL	SC	0	813	L-5	L17	L16	L14	H--	1.0
	20 WAGNER, LARRY V	SC	1046/5	1135	L-4	H--	U--	U--	U--	.5

*1st on tie-break **Under 1600 winner ***Under 1000/UNR winner

Palmetto CC Championship

Harry Abrams	6.5 (1st)	Robert Folts	4.0
Kyle Oody	6.0 (Top B)	Andy Jackson	4.0
Danny Purvis	6.0	Pani Wickramasinghe	4.0 (Top D/U)
Bob Strickland	5.5	Roger Zaragoza	3.5
Bill Bland	4.5 (Top C-tie)	Dallas Easler	2.5
Don Lemaster	4.5	Dean Williams	2.0
Dan Stacey	4.5 (Top C-tie)	Clarence Tichenor	1.5
		Roddy Williams	1.5

[courtesy Palmetto Chess Club Newsletter]

MYRTLE BEACH CAN-AM II

March 19-20, 1988

Director: Gary Sheets

1	KLAUS A. POHL	2351	W 23 1	B 13 2	W 11 3	B 4 4	W 2 5	5	\$200
2	RANDY S. KOLVICK	2347	B 24 1	W 12 2	B 7 3	W 3 3.5	B 1 3.5	3.5	
3	ALLEN M. COOLEY	2199	W 25 1	B 15 2	W 21 3	B 2 3.5	W 5 4.5	4.5	\$100
4	JEFFREY G. WALSH	2034	B 26 X	W 14 2	B 20 3	W 1 3	B 7 3	3	
5	DAVID CAUSEY	1973	W 27 1	B 17 1.5	W 19 2.5	B 8 3.5	B 3 3.5	3.5	
6	RONALD L. DENNIS	1948	B 28 1	BYE 1.5	W 17 2	B 14 3	W 9 3.5	3.5	
7	RICH L. HARRY	1940	W 29 1	B 16 2	W 2 2	B 17 3	W 4 4	4	\$50
8	ULF H. HELLSTON	1928	BYE (5)	W 18 1.5	B 40 2.5	W 5 2.5	B 12 3.5	3.5	
9	ALEX SADOWSKY	1847	B 30 1	W 20 1	B 25 2	W 21 3	B 6 3.5	3.5	
10	DOUGLAS R. HOLMES	1830	W 31 1	B 21 1	W 27 2	B 18 2.5	W 11 3	3	
11	RUSSELL THURMOND	1822	B 32 1	W 22 2	B 1 2	W 20 2.5	B 10 3	3	
12	JAMES A. LINGARD	1820	W 33 1	B 2 1	W 29 2	B 23 3	W 8 3	3	
13	MARION E. MAHAFFEY	1797	B 34 1	W 1 1	B 28 2	W 30 2	W 14 3	3	
14	PHILLIP LOWDER	1783	W 35 1	B 4 1	W 31 2	W 6 2	B 13 2	2	
15	JAMES BLANNING	1781	B 36 1	W 3 1	BYE 1.5	B 37 1.5	W 22 2	2	
16	JOHN M. SMITH	1757	W 37 1	W 7 1	B 16 1	W 40 2	B 23 3	3	\$50

17	EUGENE F. DAVENPORT	1746	B 38 1	W 5 1.5	B 6 2	W 7 2	B 25 3	3	\$50
18	JERRY N. TURNER	1744	W 39 1	B 8 1	W 35 2	W 10 2.5	B 20 2.5	2.5	
19	CHARLES AMMONS	1681	B 40 .5	W 32 1.5	B 5 1.5	X	X	0	
20	STEVEN WALL	1653	W 41 1	B 9 2	W 4 2	B 11 2.5	W 18 3.5	3.5	\$200
21	BARRY EVANS	1650	B 43 1	W 10 2	B 3 2	B 9 2	W 28 3	3	\$50
22	JOHN N. CRAWFORD	1640	W 44 1	B 11 1	W 37 1	B 34 1	B 15 1.5	1.5	
23	JAMES E. HUGHEY	1632	B 1 0	W 34 1	B 42 2	W 12 2	W 16 2	2	
24	BRUCE GOODWIN	1557	W 2 0	B 35 0	W 45 0	X	X	0	
25	BRADLEY L. PAUTZ	1547	B 3 0	W 36 1	W 9 1	B 35 2	W 17 2	2	
26	IAN C. WOLFE	1528	W 4 0	B 37 0	W 39 0	B 32 0	B 46 0	0	
27	DAVID RENAU	1515	B 5 0	W 38 1	B 10 1	W 28 1	B 29 1	1	
28	WILLIAM PILAUD	1487	W 6 0	B 39 1	W 13 1	B 27 2	B 21 2	2	
29	JOHN W. HAYMOND	1481	B 7 0	W 43 1	B 12 1	W 38 1	W 27 2	2	
30	WILLIAM T. WELLS	1473	W 9 0	B 44 1	W 16 2	B 13 3	W 37 3.5	3.5	\$80
31	KEVIN HUNSICKER	1444	B 10 0	W 42 1	B 14 1	W 41 2	B 38 2	2	
32	JOE B. RIGDON	143C	W 11 0	B 19 0	W 41 0	W 26 1	B 40 2	2	

33	GALE A. NICOLET	1413	B 12	W 40	B 38	W 46	B 35	1	
34	GREGORY W. ADAMS	1374	W 13	B 23	W 43	W 22	B 39	3	\$25
35	WILLIAM BOUTWELL	1355	B 14	W 24	B 18	W 25	W 33	1	
36	DANIEL McCURDY	1297	W 15	B 25	W 44	B 39	B 41	1	
37	MICHAEL CHROMCZAK	UNR	B 16	W 26	B 22	W 15	B 30	3.5	\$80
38	STEVE WATSON	UNR	W 17	B 27	W 33	B 29	W 31	3	\$25
39	STEVE BROOME	1294	B 18	W 28	B 26	W 36	W 34	2	
40	MICHAEL E. NICHOLS	1224	W 19	B 33	W 8	B 16	W 32	1.5	
41	LEONARD B. ROBINSON	1221	B 20	W 45	B 32	B 31	W 36	2	
42	CHARLES LESSLER	1135	BYE	B 31	W 23	B 43	B 44	2	
43	DAVID E. WILLIAMS	UNR	W 21	B 29	B 34	W 42	BYE	2	
44	CHARLES W. GRUVER	UNR	B 22	W 30	B 36	BYE	W 42	.5	
45	JOHNNY A. SIMMONS	UNR	X	B 41	B 24	X	X	2	
46	MARK R. NOSTRANT	1639	X	X	X	B 33	W 26	2	

Spartanburg Herald-Journal/S.C. Open

January 30-31, 1988

Director: Don Lemaster

PLAYER	ST	RTNG	PRE	POST	1	2	3	4	5	TOT
			RTNG	W19						
1 KOLVICK, RANDY S	NC	2333	2349	W19	W12	W29	W-2	D-3		4.5
2 TARIN, STEPHEN A	NC	2338	2339	W31	W13	W-7	L-1	W-8		4.0
3 POHL, KLAUS A	SC	2266	2280	W17	W23	D21	W-6	D-1		4.0
4 WILLIAMS, WAYNE GO	SC	2252	2245	W43	D24	W-9	D-5	W18		4.0
5 JACKSON, RICH	NC	2215	2223	W11	W15	D-8	D-4	W14		4.0
6 BLALOCK, REX E	GA	2183	2186	W32	W25	W22	L-3	W13		4.0
7 GRAY, DONNY	GA	2122	2130	W41	W10	L-2	W24	W16		4.0
8 BUSH, JR HAROLD M	SC	1966	2011	W45	W18	D-5	W21	L-2		3.5
9 FRADY, GREGORY A	SC	1907	1926	W36	W27	L-4	W30	D11		3.5
10 SIMMS, JAMES A	NC	1884	1897	W28	L-7	W44	H--	W24		3.5
11 AMMONS, CHARLES	SC	1655	1734	L-5	W37	W23	W25	D-9		3.5
12 JOHNSON, LARRY D	GA	1960	1950	W42	L-1	L24	W20	W31		3.0
13 VONDERLIETH, JOHN	SC	1915	1929	W49	L-2	W26	W17	L-6		3.0
14 BACON, W MICHAEL	GA	1913	1915	W38	L21	W43	W31	L-5		3.0
15 SCHENKEL, MARIO	SC	1878	1861	W37	L-5	L31	W45	W33		3.0
16 THURMOND, RUSSELL	SC	1822	1813	L27	W42	W34	W33	L-7		3.0
17 FOLTS, ROBERT A	SC	1791	1802	L-3	W36	W27	L13	W35		3.0
18 ANTHONY, JOHN C	SC	1716	1738	W47	L-8	W46	W22	L-4		3.0
19 AUSTIN, DONALD	SC	1701	1694	L-1	W38	L20	W46	W39		3.0
20 YARBOROUGH, DAN C	SC	1417/7	1549	H--	D44	W19	L12	W30		3.0
21 FERGUSON, RANDAL B	SC	2227	2217	W26	W14	D-3	L-8	U--		2.5
22 GRAHAM, CURTIS ADR	SC	1923	1900	W33	W30	L-6	L18	D26		2.5
23 HODGES, WYMON	GA	1870	1845	W46	L-3	L11	W42	D28		2.5
24 HOLMES, DOUGLAS R	SC	1830	1849	W50	D-4	W12	L-7	L10		2.5
25 ROBERTS, BENNIE D	NC	1816	1810	W48	L-6	W41	L11	D27		2.5
26 LEGLER, JOHN	SC	1447	1502	L21	W28	L13	W38	D22		2.5
27 SAWAF, MAX	SC	0	1793	W16	L-9	L17	W41	D25		2.5
28 HOYT, LARRY A	SC	0	1696	L10	L26	W36	W43	D23		2.5
29 WILLIAMS, DAVID KN	SC	2002	2005	W34	W40	L-1	U--	U--		2.0
30 CLINGAN, MICHAEL N	SC	1719	1693	W39	L22	W45	L-9	L20		2.0
31 SHRAIDER, DONALD R	VA	1599/10	1669	L-2	W49	W15	L14	L12		2.0
32 KLATTE, ROSS A	SC	1503	1464	L-6	L46	W48	L35	W42		2.0
33 BROOME, STEVE	SC	1294	1345	L22	W39	W40	L16	L15		2.0
34 PLOTCHYK, WILLIAM	SC	1286	1294	L29	W35	L16	L39	W46		2.0
35 SHUMAN, GENE	SC	1238/5	1315	L40	L34	W37	W32	L17		2.0
36 CONKLIN, LARRY W	SC	1191	1230	L-9	L17	L28	W48	W41		2.0
37 KLATTE, KEN	SC	1029	1064	L15	L11	L35	W47	W45		2.0
38 DAVIS, STEVE	SC	0	1425	L14	L19	W47	L26	W48		2.0
39 SOMMERER, ALAN J	SC	0	1390	L30	L33	X--	W34	L19		2.0
40 OLMSTED, FREDERICK	SC	1753	1729	W35	L29	L33	U--	U--		1.0
41 DILLARD, LEROY	SC	1631	1596	L-7	W50	L25	L27	L36		1.0
42 GALLOWAY, DONALD L	SC	1117	1113	L12	L16	X--	L23	L32		1.0
43 BARBER, EARL CARLT	SC	1410	1403	L-4	W48	L14	L28	U--		1.0
44 OSTEEN, ORVILLE	NC	1342	1354	H--	D20	L10	U--	U--		1.0
45 MILLER, JAMES R	SC	1268	1245	L-8	W47	L30	L15	L37		1.0
46 SHRAIDER, R PATRICK	VA	1065	1086	L23	W32	L18	L19	L34		1.0

16 th Snowstorm Special
TD - Don Lemaster

February 20 - 21, 1988

#	Player	Rating	Round					Score
			1	2	3	4	5	
1.	Klaus Pohl	2351	W19	W23	W10	W2	D4	4.5
2.	Edward McCauley	2145	W25	W14	W6	L1	W5	4.0
3.	Patrick Hart	2011	W26	W7	W12	L4	W11	4.0
4.	Curtis Graham	1923	W35	W20	D9	W3	D1	4.0
5.	Russell Thurmond	1822	W36	D9	W13	W10	L2	3.5
6.	Michael Touzard	1937	W30	W24	L2	D7	W19	3.5
7.	Michael Milburn	1745	W40	L3	W33	D6	W20	3.5
8.	Paul Tinkler	2085	---	W22	BYE	W26	W12	3.5
9.	Jack Berry	2106	W27	D5	D4	L12	W22	3.0
10.	John Clifford	2000	W15	W34	L1	L5	W27	3.0
11.	David Causey	1973	L20	W16	W18	W14	L3	3.0
12.	Brad Jeffers	1971	W21	W31	L3	W8	L8	3.0
13.	Irving Rosenfeld	2033	W33	D18	L5	D22	W24	3.0
14.	John Vonderlieth	1868	W16	L2	W27	L11	W26	3.0
15.	David Renau	1515	L10	W39	L19	W34	W31	3.0
16.	Gregory Adams	1374	L14	L11	D38	W29	W30	2.5
17.	Leonard Robinson	1221	L18	L25	D21	W39	W35	2.5
18.	Douglas Holmes	1830	W17	D13	L11	W30	---	2.5
19.	Jack Simunic	1668	L1	W35	W15	BYE	L6	2.5
20.	William Pillaud	1487	W11	L4	D24	W31	L7	2.5
21.	John Haymond	1481	L12	L29	D17	W38	W32	2.5
22.	Krisda Silvara	1710/11	BYE	L8	W29	D13	L9	2.0
23.	Michael Cyrus	1836	W32	L1	W25	Withdrew		2.0
24.	Charles Ammons	1681	W38	L6	D20	BYE	L13	2.0
25.	John Crawford	1640	L2	W17	L23	W35	---	2.0
26.	Ian Wolfe	1528	L3	W36	W34	L8	L14	2.0
27.	Kyle Oody	1614	L9	W32	L14	W34	L10	2.0
28.	Buddy Miller	1180	L34	L33	BYE	L22	W38	2.0
29.	Steve Watson	UNR.	L37	W21	L22	L16	W36	2.0
30.	James Hanlon	1457	L6	W38	D17	L18	L16	1.5
31.	Robert Folts	1741	W39	L12	D28	L20	L15	1.5
32.	Michael Nichols	1224	L23	L27	W39	D33	L21	1.5
33.	Gary Sheets	1579	L13	W28	L7	D32	---	1.5
34.	James Blanning	1781	W28	L10	L26	L27	---	1.0
35.	Gale Nicolet	1413	L4	L19	W36	L25	L17	1.0
36.	Stephen Brown	1184	L5	L26	L35	BYE	L29	1.0
37.	Don Lemaster	1680	W29	---	---	---	---	1.0
38.	James McGraw	UNR.	L24	L30	D16	L21	L28	0.5
39.	Robert Cross	UNR.	L31	L15	L32	L17	---	0.0
40.	Anthony Brown	UNR.	L7	Withdrew				0.0

January Death
TD - Douglas Holmes

January 9, 1988

#	Player	Rating	Round			Score
			1	2	3	
1.	Paul Tinkler	2073	W6	W3	D2	2.5
2.	Irving Rosenfeld	2021	W8	D5	D1	2.0
3.	John Leahy	1760	W7	L1	W5	2.0
4.	Mike Cyrus	1782	L5	W8	W6	2.0
5.	Ian Wolfe	1528	W4	D2	L3	1.5
6.	Mike Milburn	1742	L1	W7	L4	1.0
7.	Charles Ammons	1524	L3	L6	WF	1.0
8.	John Crawford	1634	L2	L4	LF	0.0

#	Player	Rating	Round			Score
			1	2	3	
1.	Gale Nicolet	1434	W6	W3	W2	3.0
2.	James Hanlon	1457	W4	W5	L1	2.0
3.	Steve Watson	UNR.	WF	L1	W4	2.0
4.	Buddy Miller	1060	L2	W6	L3	1.0
5.	Greg Adams	1376	LF	L2	W6	1.0
6.	Robert Cross	UNR.	L1	L4	L5	0.0

* * * * *

A FINAL NOTE

Generally, in this space are found tournament announcements. There aren't any. As usual the summer months tend to be slow for tournaments in this state. Never fear, I expect autumn to rekindle the warrior in the hearts and minds of us all.--Ed.

SOUTH CAROLINA CHESS ASSOCIATION

President: Robert John McCrary
1520 Senate St. #129, Columbia, SC 29201

Vice President: Robert Strickland
Rt. 1, Box 37, Smoaks, SC 29481

Secretary: Don Lemaster
1471 Pine St., West Columbia, SC 29169

Treasurer: Patrick D. Hart
P.O. Box 634, Sullivan's Island, SC 29482-0634

Palmetto Chess

Editor: David K. Williams
102 Elderberry Dr., Spartanburg, SC 29302

Associate Editor: Harold M. Bush
115 Elliott St., Spartanburg, SC 29301

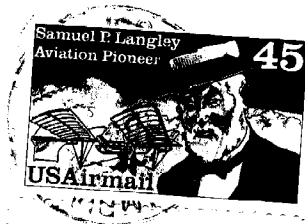
Game Annotations: M. Lee Hyder, Spencer R. Mathews, Harold M. Bush

* * * * *

Persons interested in joining the South Carolina Chess Association, a non-profit organization, should contact the Secretary. Annual dues are \$6. Junior memberships (under 19) are available for \$3.

* * * * *

RETURN POSTAGE GUARANTEED-POSTMASTER PLEASE SEND UNDELIVERABLE MAIL TO THE SECRETARY (ADDRESS ABOVE)-FIRST CLASS MAIL



M. Lee Hyder
33 Longwood Dr.
Aiken SC 29801

01/89