



PALMETTO CHESS

Published by the South Carolina Chess
Association

January, 1990

1989
STATE CHAMPIONSHIP:
THE TOURNAMENT
NO ONE
COULD WIN

Palmetto Chess

JANUARY 1990

VOLUME 25 NUMBER 1

TABLE OF CONTENTS

	Page
Computer Chess	Below
1989 South Carolina Championships	3
Fall Scholastic Tournaments	4
President's Page	6
Notes from the Editor	8
Games	9
Poetry	14
AJAX Cartoon	15
Book Review	16
Tournament Activity: Statistical Report	17
Minutes of the 1989 SCCA Business Meeting	19
SCCA Constitution	19
SCCA Treasurer's Report	22
Tournament Cross-Tables	23
Coming Events	27

Original items in Palmetto Chess may be reprinted by other non-profit chess publications that extend the same privileges.

Computer (Chess)

by Patrick Hart

20 minutes into the future... A South Carolina man finishes typing a letter using his computer. He then switches to a telecommunications program and sends it to his mother who now lives in California. It arrives in her mail box instantly and he gets a reply the next day. Welcome to the wonderful world of electronic mail. The future is already here if you have access to or own a computer equipped with a modem.

A growing number of us are combining the home computer with our love of chess in one way or another. The USA Today SportsCenter, formerly Leisure LINC, is a pay bulletin board system (BBS) that offers private and public mail, APCT postal and non-USCF postal play, articles, news and live play. It's the electronic mail capability that I want the state to take the most advantage of, and at only \$6 per hour, it can be cheaper as well as quicker than U. S. mail.

I need to know from each club if they would like to become electronically 'hooked' and who will be responsible for their club or a club member who would like to be the contact point. (Someone or the club would have to be responsible for paying your connect charges.) I need to know so I can contact the right person when the time comes when we have all the details, which won't be long now. I also want to know of any member who has a computer (brand?) and modem, as well as any pay bbs to which they subscribe. Please send to my address on back cover. A RESPONSE TO THIS DOES NOT MAKE YOU LIABLE FOR ANYTHING. Thanks.

THE 1989 SOUTH CAROLINA CLOSED CHAMPIONSHIP:
THE TOURNAMENT NO ONE COULD WIN

The Championship Section of the 1989 SCCA Championships was the Tournament no one could win. In the end, of course, someone had to win, and in fact three did. They did it, though, by backing in, drawing their games in the last round when a win would have given one the title. And they did it with 3 1/2 - 1 1/2 scores, the lowest winning scores in the history of the tournament. The three winners included two who had been there before: Wayne Williams and Lee Hyder, and a newcomer to the title, the newly elected SCCA President, Doug Holmes.

The player who had perhaps the greatest effect on the tournament didn't make it into the charmed circle, although as it turned out he, too, had his chance in the last round. This was Paul Tinkler of Charleston, who upset top-rated Klaus Pohl in the first round, and started Pohl into a spiral of defeats that lead to his withdrawal from the tournament. Tinkler was not through; he went on to draw with Hyder and with Williams in the last round, and only a defeat by Mickey Bush kept him from tying or winning the title. A win against Williams would have still given him a tie; but this was not to be.

The last chance to win the title outright was Williams'; he fought on into the evening against Tinkler before conceding the draw after all the other players had finished. But the best chance, as it turns out, was Holmes', in his game with Hyder in the last round. Hyder's opening error left him in a bad bind which Holmes attacked vigorously; but he failed to play the crucial combination that would have broken through all resistance, and the game was equalized.

Much of the credit for the hard-fought result of this tournament lies with the size of the section (12) and the relatively limited rating spread among the participants. Still, the Amateur Section was bigger and had a much higher diversity of ratings, and it too produced tri-champions. Irving Rosenfeld, David Deininger, and Henry White each scored 4-1, even though their pre-tournament ratings had ranged from 1669 to 1999! Rosenfeld, the highest rated, had to come from behind to catch the others; he had lost to Deininger in Round 2, and only a draw between Deininger and White in the last round enabled him to tie.

In the Reserve Section there was a clear winner. Leonard Robinson led all the way through, and his draw in the last round with David Jarnagin left him a clear half point ahead of Jarnagin and Carl Fossa who scored 4-1. There were 18 in this section, 29 in the Amateur, so that the total entry for the event was 59. Don Lemaster directed this, his 100th event, for which he was recognized at the Business Meeting (and shared a celebration cake with all present!)

FALL SCHOLASTICS

The fall has been an exciting time for scholastic chess in SC. We have had three very nice tournaments with a lot of participation. Two of the tournaments were held in Charleston and the other was the SCCA Fall Scholastic held in Columbia. The two Charleston tournaments had 47 and 45 participants respectively. The first was held on November 4, while the second was played on December 9. One week after the first Charleston tournament, the SCCA sponsored the Fall Scholastic which was held in Columbia. 27 students participated in the Columbia tournament, 18 of which were the cream of the Charleston crop. Each of the Charleston tournaments were split into 3 sections: A)fairly high rated high school students B)lower rated and unrated high school students C)all middle school students. This proved to be a very successful format. The Columbia tournament was simply split into high school and middle school sections. This proved to be sufficient for the number of players.

First, the November Charleston tournament was appropriately named the Hugo Scholastic since it had been scheduled for September 25. Current state champions, Kurt Sattelmeyer and Kim Turok, won the C and A sections with perfect 4-0 scores. Trey Moten, from College Park Middle took second place behind Kurt in the C section. Daryl Dowty, also from College Park, took the top unrated trophy. Since Kurt is also from College Park, we can already engrave the school team trophy for the State Championship. Bill Carver is the sponsor there and he is obviously doing a fantastic job. SC needs about 300 Bill Carver's. Also, their school pays for their entry fees! Two other CP students, Davi Velasquez and Kenny Miller, tied for second but lost the trophy to Trey on tiebreaks. Lanny Ballard, from Dubose Middle also tied for second. In the A section, Dennis Williams from Garrett took the second place trophy on tiebreaks over Donnie Hayes from Summerville. Dennis lost to Kim in the last round as he was again to do in the second Charleston tournament. Charles Kull from St.Andrews showed much improvement in tying for the second place trophy and taking home the top under 1400 trophy for the A section. The B section was won by another student from Garrett, Dennis Gray. He also won with a perfect 4-0 score. Greg Wong from Stratford lost to Gray in the last round but still managed to take the second place trophy. Tied for second were Alan Dodd from Goose Creek, Ricky Carswell from Hanahan, and Peter Chung from the Burke magnet school. Matt Martin from Stratford took the top unrated trophy as well as tying for second place overall.

The Columbia tournament was very exciting for the Charleston players as they got to make a road trip. I arranged to take about 18 of the best players in the Charleston area up to Columbia to compete with the rest of the state. Sadly, there were only 9 other students from the rest of the state. The best part about the Columbia tournament was watching the best players take their time and study the positions. There was a good bit of time trouble at the G/40 time limit. After the start of the first round, I was proud to notice that not one high school game had finished after 45 minutes. Bryce Harrison, Tri-County Champion from Stratford, won the high school section with a 4-0 score. Donnie Hayes gave Bryce a very good game in the last round but missed a possible win. Second place went to Kevin Tamayo, also from

Stratford, with 3.5 points. His draw came from Donnie Hayes in the 3rd round. Donnie had an easily won endgame but was in time pressure. With a little luck, Donnie could have easily won the whole tournament. The guy with all the luck was Kevin. His draw with Donnie was enough luck for one day, but look at his last game with Dennis Williams. He pulled one of the prettiest swindles that I have seen in the high school ranks. Kim Turok was absent from the tournament. Kim is also from Stratford. So as College Park has a fantastic middle school program, Stratford will probably win the high school state trophy again this year. Peggy Sattelmeyer is the sponsor there and she is also doing a great job. The funny thing is that College Park Middle feeds into Stratford High!! The middle school section should have been won by Trey Moten. However, Trey lost to Jae Min Purvis in the last round after being a queen up. This threw first place into a four way tie between Trey, Jae Min, and Stephen and Jamall Simmons. These last two are sons of Johnny Simmons. It was decided to give them all trophies and make them co-champions. Kurt Sattelmeyer was absent.

The December Charleston tournament was named the Winston O'Boogie scholastic in memory of John Lennon who died on December 8, 1980. There were a couple of twists in this tournament. Kurt Sattelmeyer and Stephen Simmons decided to play up in the high school section. Since their ratings are fairly high, they had to play in the A section. Both did very well. Kurt was 2-1 going into the last round and playing on board 2. He was beating Mark Sessoms, a very experienced senior from James Island who beat Bryce Harrison in last year's state championship, only to blunder in the end game. Stephen finished 3-1 with his only loss coming from state champ Kim Turok. Kim won again with a 4-0 score and a win over Dennis Williams in the last round. Dennis took the second place trophy on tiebreaks over Stephen Simmons and Mark Sessoms. Sessoms took the top under 1400 trophy. The B section was won convincingly by a new player from First Baptist, Matthew Hunt. Matthew had a pretty easy 4-0 over some pretty good players. He beat Charles Kull from St. Andrews in the last round. Charles got the second place trophy on tiebreaks over Joseph Trevino from Stratford and Brian Kuhl from Garrett. Curtis Yucker from Burke took the top unrated trophy as well as tying for second overall. The C section was up for grabs since Kurt and Stephen were playing up. Lanny Ballard and Trey Moten seemed to be the favorites. However, it really did seem to be anybody's tournament. After 3 rounds there were 4 tied for first with 2.5 points. After 2 more rounds and the dust had settled, Lanny Ballard was the only one left with 4.5 points. Trey Moten took second with 4 points by winning his last 3 games. Yes, the favorites had risen to the top. Top unrated went to David Williams, brother of Dennis, on tiebreaks over Jonathan Angelo. Jonathan, from Alston Middle seems very promising. He is a very slow player for his age. In fact, I had to put a clock on his second round game against Trey Moten.

Overall, the three tournaments were very successful. I have seen many of these students play now for over a year, and I can honestly say that their level of play has increased dramatically. Scholar's mate in the high school sections is totally nonexistent. Many kids are getting into time trouble at 6/45. The high school A section are taking notation fairly well. Everyone develops rapidly and controls the center. And, wow, do they love to attack.

PRESIDENT'S PAGE
By Doug Holmes

Well, 1989 has been quite a year for me and the SCCA. I have become President of both the SCCA and the Charleston Chess Club, Charleston Chess Club Champion, S. C. state Co-Champion, and gained 235 rating points in the process. Meanwhile, the SCCA is also prospering. We have had some very successful tournaments in the state this year. The SC Open was held in Columbia in April, and turned out to be a very nice tournament for both players and organizers. This summer the US Womens' Championship was held in Spartanburg. Also, the State Championship was one of the best held in recent years. We had trouble making room for everyone to play even though Hugo kept at least eight Charlestonians home (including Pat Hart, Ed McCauley, and David Causey. As far as the local tournaments go, I know that our two tournaments in Charleston did better than usual. I am also very pleased about Gary Sheets' progress in the Myrtle Beach area. His Can-Am tournament should now be a permanent fixture in our spring chess schedule, and his January Landmark tournament is the only Grand Prix tournament held in our state. I really would like to see a huge turnout this month to support Gary's efforts.

Now, I would like to talk about my biggest concern as your President. I have made a huge commitment to scholastic chess in this state. So far, it has paid off in a big way. I made this decision in the spring of 1988 when the scholastic state championship was being held in Columbia. It was the first such event held in SC for some years. I was very disappointed to see only 19 participants. I was even more disappointed to see two of the state's officers actually pleased by this turnout. Since then some changes have been made. I now have about 200 kids in the Charleston area playing organized chess. Most of these have played in tournaments or are planning on doing so. Al Lawrence of the USCF has just written us a letter praising our sudden change of ratio of scholastic to adult members. That ratio used to be 20 to 3000; now it is 200 to 300. The Scholastic State Championship was held in Charleston in March of 1988. There were a total of 73 participants. This year I am hoping for over 100.

Unfortunately, there is not much else to speak of scholastically in SC. There is Dean Roesner in Saluda, who must be applauded for his efforts in this small area. Otherwise, I can only say that I have heard John Haymond and Gary Sheets talk about starting programs in their area. To me this is a depressing situation; I will feel my efforts wasted if something is not done in the rest of the state. I do not think that scholastic chess will spread to the rest of the state because of a vigorous program in Charleston. Also, I do not think that the most will be made of the situation in Charleston until the rest of the state makes things interesting. In fact, I believe that scholastic chess in Charleston will last perhaps three years if something is not done about the rest of the state. Now that is a scary thought. It may be the last chance for scholastic chess in our

state for some time; it may be now or never.

Well, you ask, "What can I do to help?" I thought you would never ask! I do not need money. (but if you cannot give time--) I do not need two or three people to work their butts off putting in considerable time and money. What I do need is a lot of people all willing to contribute just a little time. We have approximately 325 adult members; if one quarter of these would volunteer to help, no one person would have to volunteer more than an hour per week. Now, who cannot give up one lunch hour per week? Of course, if more people are willing to help, that means that each person's time will decrease. On the other hand, if fewer people can find one hour each week, that means that those charitable few will have to work even harder to make up for those that just refuse to miss one lunch per week.

OK, you now ask, "What am I going to do for this one hour?" With my help we are going to find a school in your area that is interested in forming a chess club. You will go out and meet with the principal and set up a time that is convenient for you to meet with the club each week. Then each week, at a specified time on a specified day, you will go to the school and meet with the chess club instead of going to lunch. Of course, there are a few more details that might be helpful in getting the club set up, but I would be very happy to talk to you about details in a more individual manner. Let me say now that if anyone is interested please call me in Charleston at 795-7424, or write to me at the address on the back cover.

Finally, I would like to predict what it would take to make chess in SC very successful. I think that if I could get only about ten people in each of the other two major areas (Greenville-Spartanburg and Columbia) to undertake the program I have just described, you would be amazed how we would progress relative to the rest of the U. S. Of course, a few more people in a few more areas could easily propel us to the top of scholastic chess in the U. S.

In conclusion, things are going great for chess in SC right now, perhaps the best since the Fischer years. We have made a lot of progress, but we should not be satisfied to maintain the status quo. We must forge ahead. Now that I have gotten the scholastic snowball rolling, you need to get behind it and push as hard as you can. Otherwise, it may very well melt. Finally, if you think the kids in your area are not interested in chess, then you are out of touch. There are dozens of kids in your area that would love to get involved, but they have no idea where to get started. They have no idea what the SCCA is, or of the scholastic chess program in Charleston, but they are playing chess at lunch with their friends right now. You would be amazed at how many of them own chess software for their home computers; you would be amazed how many own chess computers. You would also be amazed how easy and enjoyable it is to help them organize.

It's good to be back, but the more so because of all the good material submitted for this issue by Don Lemaster, John McCrary, Pat Hart, and others. I hope to find other contributors in the coming year. In this regard, I'll put out a call to all you correspondence players: give us a game or two for next issue. We'll have a special correspondence chess issue. Do you hear me, Wayne, Mickey, David---? Of course I'm always ready to receive games, especially with notes! Typed copy, single-spaced, with margins of 3/4 inch or so, is very welcome; I can also handle MacWrite or DOS text files on 3 1/2 inch disks, and will return the disks.

One of the questions I've been asked is about our publication schedule. It will be, roughly, mid-January, April, July, and October. Deadlines for material for publication will be the first of each of these months.

One of the things requested for our publication at the annual Membership Meeting this year was a schedule of coming events as far ahead as possible. I've tried to obtain this, with considerable success for Georgia, some for South Carolina, and no input yet from North Carolina. Looking at the schedule, I see that January is a busy chess season with tournaments in Augusta, Myrtle Beach, and Asheville. In February the Charleston club will host their annual Snowstorm Special, and considering how this winter has begun, it may be well named. I hope all of you can take advantage of these opportunities. Except for the Scholastics, there is a long hiatus before the next big event, unless some of our clubs come forward to fill the gap. In that event the chess computer network that Pat Hart is working on may be useful for getting out the word. See his article in this issue.

The USCF continues to attract chess politicians of various sorts, as does also FIDE. This is something you won't learn much about unless you read Inside Chess, Yasser Seirawan's excellent magazine (which is highly recommended on the basis of its news content and its excellent selection of grandmaster games). FIDE is trying to stifle criticism of its leadership by censoring critics; the USCF has taken a rather wishy-washy position that has accomplished little; and some U. S. chess personalities tried to fill this void by sending FIDE members an intemperate and insulting letter that was no doubt counter-productive. It's a mess, folks. Meanwhile, Kasparov and his Grandmasters' Association are trying to take over FIDE's role. Stay tuned, and rest assured that all this won't keep us from playing chess here in South Carolina!

The USCF issue of most interest to the membership is the perennial proposal to elect officers by direct vote of USCF members. Officers are now elected by voting members from each state, assigned in proportion to the USCF membership in that state. The argument advanced in support of change is that direct election would lead to better, more responsive officers. I'm not convinced of this, especially since the policy of *Chess Life* down through the years, as set by a succession of editors who wanted to stay to edit the next issue, has been to publish as little on controversial issues as possible; when this policy is violated, there is always an objection from the membership, who want to read about chess, not chess politics. Well-informed voting is not likely. Additionally, for the last thirty years I have been a member of a professional society somewhat larger than the USCF that holds annual direct elections of its officers. In that time there have only been one or two elections in which there was a clear difference of issues or policy to distinguish the candidates. The candidates are always prominent members selected by the "establishment". Sound familiar? For the meanwhile, if you want direct elections, or any other change in the USCF, tell Doug Holmes, who will be representing us within the USCF for the coming year.

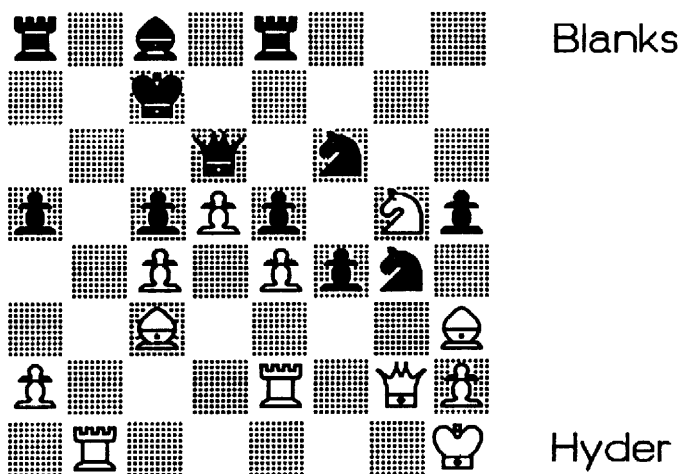
GAMES

From the 1981 S. C. Championships:

In Round 1 Wayne Williams gave a lesson in how to win from a dead even position. He played Black against Zaragoza:

1 d4 d5 2 c4 dxc4 3 ♖f3 a6 4 a4 c5 5 e3 ♖f6 6 ♙xc4 e6 7 O-O ♗c6 8 dxc5 ♙d7 9 ♘e2 ♙xc5 10 ♖c3 O-O 11 ♙d1 ♘c7 12 h3 ♗e5 13 ♗xe5 ♘xe5 14 ♙d2 ♙ac8 15 ♙d3 ♙c6 16 e4 ♗h5 17 ♙e3 ♙d6 18 g3 ♗xg3 19 fxg3 ♘xg3+ 20 ♙f1 f5 21 ♙f2 fxe4 22 bxe4 ♙c5 and White resigned.

The first round game between Lindsay Blanks and Lee Hyder ended suddenly when Blanks went too quickly to gain material:



34--♗e3? 35 ♙xe3 fxe3 36 ♗f7 ♘f8 37 ♘b2! and there was no defense to the several mate threats.

It was not at all evident in Round 2 that the following would be one of the important games in the tournament. Doug Holmes, playing Black against Williams, equalizes, and the players call it a draw in a position with a lot of play left:

1 e4 e6 2 d4 d5 3 ♖c3 ♙b4 4 e5 c5 5 ♙g4 ♗e7 6 ♗f3 cxd4 7 ♗xd4 ♗g6 8 ♙d2 O-O 9 ♗f3 f5 10 exf6 ♘xf6 12 O-O e5 13 ♘h5 ♙xc3 14 ♙xc3 ♙f5 15 ♙xf5 ♘xf5 16 ♘xf5 ♙xf5 drawn.

What turned out to be one of the crucial games of the tournament happened as early as the third round when Lee

Games, Continued

Hyder played Wayne Williams. Hyder was White:

1 d3 c5 2 c4 g6 3 d3 g7 4 g3 e6 5 g2 d6 6 O-O dge7 7 d3
O-O 8 g2 h6 9 b1 d5 10 e4 h7 11 exd5 exd5 12 cxd5 b4 13 d4
f5 14 d6l dxd6 15 dxc5 dxc5 16 e3 d5 17 a3 d3 18 d4 d8
19 dxd5 dxb2 20 e2 dxf5 21 dxb2 dxc3 22 dxb7 dxe3 23 fxe3
g7 24 b5 dxa3 25 d5 f6 26 e4 de8 27 b3 d5+ 28 h1 e7
29 a6 d4 30 b7 h5 31 b5 d8 32 a4 e5 33 b3 d3 34 f3
h4 35 g2 d2+ 36 d2g2 d8 37 dxf7 dxf7 38 dxf7 d2+ 39 d3
d7 40 d5 f6 41 d4 d2+ 42 g4 b6 43 b3

--and the players agreed a draw after a game full of tactics.

The crucial last round game from the Reserve Section: Leonard Robinson presses, loses material, but hangs on when his opponent David Jarnagin can find nothing better than a draw by repetition.

1 e4 e5 2 d4 f6 3 d3 d5 4 exd5 dxd5 5 dxf3 f6 6 g5 b7 7
d3 d5 8 d3 c6 9 O-O h6 10 dxf6 dxf6 11 d3 d6 12 d2g6 f6g6
13 d4 b6 14 d6+ e7 15 dxc8 dxc8 16 h1 h8 17 f4 exf4 18
dxf4 f6 19 ae1+ d6 20 e6+ dxe6 21 dxd6 e8 22 d2g7 e7 23
d6 dxe6 24 dxe6 dxe6 25 g3 g5 26 g2 d7 27 f3 h5 28 e1+
f6 29 e4 b6 30 f1+ g6 31 b3 f6+ 32 f3 d4 33 h1 f2 34
f1 d4 35 h1 Drawn.

David Deininger has to be an editor's favorite: in addition to playing interesting chess, he keeps beautiful neat score sheets. In his game against the section's top rated player, Irving Rosenfeld, he shows that he understands the Greco counter-gambit, and a great deal more:

1 P-K4 P-K4 2 N-KB3 P-KB4 3 NxP Q-B3 4 P-Q4 P-Q3 5 N-B4 PxP
6 N-B3 Q-N3 7 P-B3 PxP 8 QxP N-KB3 9 B-Q3 Q-N5 10 QxQ BxQ 11
N-K3 N-B3 12 NxB NxN 13 N-Q5 K-Q1 14 O-O B-K2 15 R-B7 N-B3 16
NxB NxN 17 RxP K-K1 18 B-KN5 R-KB1 19 BxN RxB 20 R-K1 R-B2 21
RxP RxR 22 BxR K-B2 23 B-K4 P-B3 24 P-KN4 R-KN1 25 P-KR3
R-N4 26 K-N2 P-R4 27 K-N3 P-R5 28 P-KR4 R-N1 29 K-B4 N-N3+ 30
BxN+ RxB 31 P-N5 R-N1 32 K-B5 R-QR1 33 P-N6+ K-N1 34 R-K6 P-Q4
35 P-R5 R-KB1+ 36 K-N5 Black forfeited on time.

In Round 4 Deininger played White against John Leahy, and as his position began to crumble, he went all out for attack. You'll enjoy this one!

Games. Continued

1 P-K4 P-QB3 2 P-Q4 P-Q4 3 P-K5 B-B4 4 P-QB4 P-K3 5 B-K2
B-N5+ 6 B-Q2 BxB+ 7 NxB N-K2 8 KN-B3 N-Q2 9 O-O O-O 10 N-R4
P-QR4 11 P-B4 Q-N3 12 N/2-B3 QxNP 13 NxB NxB 14 PxPI N-K6 15
Q-Q3 NxR 16 N-N5 P-KN3 17 RxN BPxP 18 Q-KR3 QxQP+ 19 K-R1
P-R4 20 BxP K-N2 21 BxP R-R1 22 Q-KN3 Q-N3 23 NxBP KR-KN1 24
Q-N5 K-B1 25 P-B5 PxP 26 QxP RxB 27 N-Q6+ K-N1 28 QxR+ K-R1
29 N-B7 Mate

Now some short ones! Our cartoonist, Andy Jackson, pulls off
perhaps the swindle of the tournament, playing Black against
Phillip Lawrence:

1 N-KB3 P-Q4 2 P-QN3 P-Q5 3 B-N2 P-QB4 4 P-N3 B-B4 5 B-N2
N-QB3 6 O-O P-K4 7 P-Q3 P-K5 8 N-R4 B-N3 9 PxP B-K2 10 NxB
RPxN 11 P-QB3 B-B3 12 P-K5 BxP 13 BxN+? PxB 14 PxP Q-Q2 15
PxB? Q-R6 16 Resigns.

Russell Neer here chases Joseph Kobleur's king about the board:

1 P-K4 P-K3 2 P-Q4 P-Q4 3 N-Q2 N-KB3 4 P-K5 N/3-Q2 5 KN-B3
P-KB3 6 B-Q3 B-K2 7 O-O P-QN3 8 R-K1 PxP 9 NxP NxN 10 RxN
N-B3 11 Q-R5+ K-Q2 12 B-N5 Q-B1 13 RxP+ B-Q3 14 Q-R3 B-N2 15
N-K4 P-KR3 16 B-Q2 P-QR4 17 R-K1 Q-B2 18 NxB PxN 19 B-B4 QxB
20 QxP+ K-B2 21 R-B5 Resigns.

And here Keith Eubanks (White) shows Charles Ammons why
the book move is 5--P-Q4.

1 P-K4 P-K4 2 N-KB3 N-QB3 3 B-B4 N-KB3 4 P-Q4 PxP 5 P-K5
N-N5 6 BxP+ KxB 7 N-N5+ K-K1 8 QxN NxP 9 QxP Q-B3 10 O-O
P-KR3 11 R-K1 PxN 12 RxN+ K-Q1 13 BxP Resigns.

Sorry we don't have any of Paul Tinkler's games, but perhaps
we can get them for the next issue. On the next two pages
we continue with some of the games from the Scholastic
tournaments held this fall:

Williams-Tamayo**Columbia Fall Scholastic****1989**

1.e4 Nf6 2.Nc3 e5 3.Nf3 d5 4.exd5 Nxd5 5.Qe2 Nxc3
 6.dxc3 f6 7.g3 Bg4 8.Bg2 Nc6 9.0-0 Bd6 10.Rd1 Qe7
 11.Re1 0-0 12.h3 Bxf3 13.Qxf3 Rad8 14.Be3 Bc5 15.b4 Bxe3
 16.Rxe3 Rd2 17.Qh5 g6 18.Qg4 f5 19.Qc4+ Qf7 20.Qf1 e4
 21.g4 Ne5 22.Qb5 Nc4 23.Ree1 Na3 24.Qxb7 Nxc2 25.Red1 Rxd1+
 26.Rxd1 e3 27.Bd5 e2 28.Bxf7+ Rxf7 29.Qf3 e10+ 30.Rxe1 Nxe1
 31.Qe2 fxf4 32.Qxe1 gxf3 33.Kh2 Rf3 34.c4 g5 35.Qe4 Rxf2+
 36.Kxh3 Rxe2 37.Qd5+ Kg7 38.Qd7+ Kh6 39.Qxc7 e5 40.bxe5 Ra3+
 41.Kg4 Rb3 42.a6 Kg6 43.e7 h5 mate

Sessoms-Martin**Columbia Fall Scholastic****1989**

1.e4 e5 2.Nf3 Nc6 3.Bc4 Nf6 4.Nc3 Bc5 5.d3 0-0
 6.Bg5 d6 7.Nd5 Bg4 8.0-0 h6 9.Bxf6 gxf6 10.Ne3 Bh5
 11.Nf5 Bxf3 12.Qxf3 Kh8 13.Qh5 resigns

Sessoms-Williams**Winston O'Boogie Scholastic****1989**

1.e4 c5 2.d4 cxd4 3.c3 dxc3 4.Nxc3 Nc6 5.Bc4 Nf6
 6.Nf3 d6 7.0-0 Bg4 8.Bg5 g6 9.Qe2 Bg7 10.Rfd1 0-0
 11.Rac1 Rc8 12.Qe3 Bxf3 13.Qxf3 Ne5 14.Bxf7+ Rxf7 15.Qe3 Qf8
 16.Qxe7 Bh6 17.Bxh6 Qxh6 18.Qxb7 Rcf8 19.a4 Nf6 20.h3 Nxf2
 21.Rf1 Ned3 22.Rc2 Nxh3+ 23.gxf3 Rxf1+ 24.Kh2 Qf4+ 25.Kg2 Ne1 mate

Sessoms-Sattelmeyer**Winston O'Boogie Scholastic****1989**

1.e4 e5 2.Nf3 Nc6 3.Bc4 Bc5 4.c3 d6 5.h3 Nf6
 6.d4 exd4 7.cxd4 Nxd4 8.Nxd4 Nxe4 9.0-0 0-0 10.Nf3 Qe7
 11.Re1 Bxf2+ 12.Kf1 Bxe1 13.Qxe1 Bf5 14.g4 Bg6 15.Nc3 Rfe8
 16.h4 Nxc3 17.Qxe7 Rxe7 18.bxc3 Re4 19.Bd5 Rxf4 20.Bxb7 Re8
 21.a3 Be4 22.Bxe4 Rxe4 23.Rb1 h6 24.Rb7 Rc4 25.Bb2 e5
 26.Nd2 Rcf4+ 27.Ke2 Rxh4 28.Rxc7 g5 29.c4 g4 30.Rc8+ Kh7
 31.Rh8+ Kg6 32.Rg8+ Kh5 33.Bc1 f5 34.Rh8 Kg6 35.Rd8 g3
 36.Rxd6+ Kg7 37.Bb2+ Kf7 38.Nf3 Rh2+ 39.Nxh2 gxf2 40.Rd1 Rxc4 41.Kf3
 Rh4 42.Rh1 Kg6 43.Kg3 Kg5 44.Bf6+ Kh5 45.Bxh4
 Kg6 46.Rxh2 h5 47.Kf4 Kh6 48.Kxf5 Kg7 49.Re2 Kf7 50.Re7+ Kf8
 51.Kf6 Kg8 52.Kg6 Kf8 53.a4 Kg8 54.Re8 mate

Sprague-Sessoms**Winston O'Boogie****1989**

1.e4 e6 2.e5 d5 3.d4 c5 4.c3 Nc6 5.Be3 Qb6
 6.Nf3 Qxb2 7.Nbd2 Qxc3 8.Rc1 Qa5 9.dxc5 f6 10.bxf6 Nxf6
 11.Bd3 Bd7 12.Ng5 Ne5 13.Bb1 Rc8 14.0-0 Bxc5 15.Bf4 Neg4
 16.Nh3 Qb6 17.Bg3 Bb5 18.Re1 0-0 19.Nf3 Bb4 20.Rxc8 Rxc8
 21.Nd2 Re8 22.Bh4 Bxd2 23.Qxd2 Nd7 24.Qc2 g6 25.Nf4 Nc5
 26.h3 Nh6 27.Nxg6 Bd3 28.Qd2 Kg7 29.Bxd3 Nxd3 30.Qxd3 hxg6
 31.Qc3+ d4 32.Qf3 Nf5 33.Re5 Nxh4 34.Qg4 d3 35.Qxh4 d2
 36.Qg4 Qb1+ 37.Kh2 d1Q 38.Qa4 Qxa4 39.Re3 Qf4+ 40.Rg3 Qxf2
 41.h4 Qbg1+ 42.Kh3 Qh1+ 43.Kg4 Qf5 mate

Turok-Williams**Winston O'Boogie Scholastic****1989**

1.d4 Nf6 2.c4 e6 3.Nc3 Bb4 4.a3 Bxc3+ 5.bxc3 b6
 6.Bg5 Bb7 7.a3 d5 8.Nf3 c5 9.cxd5 exd5 10.Qb3 c4

11.Qc2 0-0 12.g3 Qe7 13.Bg2 Nbd7 14.0-0 a5 15.Rfb1 Rfe8
 16.Bh3 Bc6 17.Bxd7 Bxd7 18.Rxb6 h6 19.Bxf6 gxf6 20.Nh4 Qd8
 21.Rab1 Qc7 22.Rxf6 Kg7 23.Rbb6 Re6 24.Rbx6 Bxe6 25.Rf4 Rb8
 26.Nf5+ Bxf5 27.Qxf5 Qb7 28.Qf6+ Kf8 29.Qxh6+ Ke8 30.Qh8+

Manness-Turok

Winston O'Boogie Scholastic

1989

1.e4 c5 2.Nc3 d6 3.b3 g6 4.Bb2 Bg7 5.Nf3 Nf6
 6.g3 0-0 7.Bg2 Bg4 8.0-0 Nc6 9.h3 Be6 10.Re1 Rb8
 11.d4 cxd4 12.Nxd4 Nxd4 13.Qxd4 Nd5 14.Qd2 Nxc3 15.Bxc3 Bxc3
 16.Qxc3 Rc8 17.Qd2 Qc7 18.Rac1 Qc3 19.Qh6 Rc7 20.e5 Rfc8
 21.Re3 Qd2 22.Rce1 Rxc2 23.Bxb7 Qxf2+ 24.Kh1 Qh2 mate

Turok-Sprague

Winston O'Boogie Scholastic

1989

1.d4 d5 2.c4 e6 3.cxd5 exd5 4.Nc3 Nf6 5.Bg5 Be7
 6.e3 Bg4 7.Nf3 Nc6 8.Be2 Bb4 9.0-0 Qd6 10.Rc1 0-0-0
 11.a3 Ba5 12.b4 Bb6 13.Na4 Ne7 14.Qc2 c6 15.Bf4 Bf5
 16.Nxb6+ axb6 17.Bxd6 Bxc2 18.Bxe7 Rdg8 19.Rxc2 Ne4 20.Ng5
 Nxc5 21.Bxc5 b5 22.Bxb5 f6 23.Bf4 g5 24.Bg3 Kd7 25.Bd3 h5
 26.Bf5+ Ke7 27.f4 gxf4 28.Rxf4 Rg5 29.Rcf2 b6 30.Bh4 Rg7
 31.Bd3 Rh6 32.Bxf6+ Rxf6 33.Rxf6 h4 34.Rxc6 h3 35.Rc7+ Ke6
 36.Rxg7 Kd6 37.Rf6 mate

Sattelmeyer-Biango

Winston O'Boogie Scholastic

1989

1.e4 e5 2.Nf3 Nc6 3.Bc4 Nf6 4.d3 d5 5.exd5 Nxd5
 6.Bxd5 Qxd5 7.Nc3 Qd8 8.d4 exd4 9.Ne2 Bc5 10.0-0 Bg4
 11.Qd3 Qd7 12.c3 Bxf3 13.gxf3 dxc3 14.Qxd7+ Kxd7 15.Nxc3 Ne5
 16.f4 Nd3 17.Rd1 Ke8 18.Rxd3 h5 19.Be3 Be7 20.Nd5 Rd8
 21.Nxc7+ Kf8 22.Rxd8+ Bxd8 23.Nb5 a6 24.Na7 f6 25.Rd1 Be7
 26.Nc8 Bb4 27.Rd8+ Kf7 28.Rxh8 Kg6 29.a3 Ba5 30.f5+ Kxf5
 31.Rxh5+ g5 32.b4 Bc7 33.Rh7 Be5 34.Rxb7 g4 35.b5 Bb2
 36.bxa6 Bxa3 37.a7 Kg6 38.a8Q Bf8 39.Ne7+ Bxe7 40.Rxe7 f5
 41.Qg8+ Kf6 42.Qf7 mate

Williams-Sattelmeyer

Winston O'Boogie Scholastic

1989

1.d4 d5 2.c4 e6 3.Nc3 Nf6 4.Bg5 Be7 5.e3 Nc6
 6.Nf3 0-0 7.Bd3 Bd7 8.cxd5 exd5 9.0-0 h6 10.Bxf6 Bxf6
 11.Nxd5 Ne7 12.Nxf6+ gxf6 13.Bc2 Qe8 14.Qd3 Bf5 15.e4 Bg6
 16.Rfe1 Nd5 17.exd5 Qxe1+ 18.Rxe1 Bxd3 19.Bxd3 Rfe8 20.Rc1 c6
 21.dxc6 bxc6 22.Rxc6 Rac8 23.Rxf6 Rc1+ 24.Bf1 Rd1 25.Rxh6 Re2
 26.Ra6 Re7 27.b4 Rb7 28.a3 Rb1 29.g3 Rb3 30.Kg2 Rc3
 31.h4 Rcc7 32.b5 Rb6 33.Ra4 Kf8 34.d5 Ke7 35.h5 Rh6
 36.g4 Kd6 37.Rd4 Rb7 38.Kg3 f6 39.Kf4 Rg7 40.g5 fxg5+
 41.Nxg5 Kc5 42.Ne6+ resigns

POETRY CORNER

Even for chessplayers, no game or tournament could be the big event of 1989, not in South Carolina! In recognition of this and the season, we offer the following poem by Paul Tinkler of Charleston and his young daughter Mary. It was written in October, and we can only wonder what the authors would have added had they known that Charleston would have its first White Christmas ever a couple of months later!

A VISIT FROM HUGO

'Twas the week after Labor Day: all through the sea
Not a creature was stirring, (No, not even he);
The children in school, the mothers relieved,
Wet summer had ended (or so we perceived).

The trees were all rooted so snug in the ground;
Pines, oaks and magnolias were everywhere found.
And we in our house (so close to the river!)
Eagerly waited for autumn's first shiver.

When out on the ocean there arose such a breeze,
That they gave it a name as it churned up the seas.
Away to the west it blew like a beast
Determined to gorge on a gargantuan feast.

The heat from the brunt of the tropical sun
Gave the monster its power (Oh, how it spun!)
Then, we all watched the great killer destroy.
It mashed Puerto Rico and mangled St. Croix.

Then a turn to the north, so lively and quick!
What we saw on our charts made us queasy and sick!
We began to buy batteries and board up our houses.
The guys in the Navy said "Bye!" to their spouses.

Then Linda and Joseph and Melvin and Carmen,
They told us quite strongly that soon 'twould be stormin!
"To the top of the state! Don't linger or stall!
Now dash away! dash away! Dash away all!"

Like Santa's eight reindeer pulling his sleigh
We bolted from Charleston at dawn the next day
So up through the midlands to the foothills we flew,
With a carload of kids (and our Guinea pig too).

And then on the tube we watched it approach,
While no other subject dared anyone broach.
On "48 Hours" Dan Rather was grim.
Of those still in Charleston, we hoped they could win!

The stars - how they twinkled in the midst of his eye!
Some thought he had gone as the winds, they did die.
Unfortunately, though, he came back again

Screeching, and howling, and ripping off tin.

He crushed and he muddied, he smashed and he stained.
For a couple of hours he raged and he rained.
Dawn broke to reveal a pain in the belly
As we saw our fair city reduced to mere jelly.

We returned with an ax, a hammer, a saw.
The damage he'd done made us view him with awe.
Those "stoneheads" who'd stayed and had not gone to bed,
Soon gave us accounts of their fear and their dread.

We spoke not a word, but went straight to our work.
But soon were exhausted and cursing that jerk!
And, laying our tools down, we reviewed our insurance.
What we learned then truly strained our endurance!

And then came the quake (But don't forget Jerry!)
Disasters, though commonplace, are nonetheless scary.
I'm compelled to exclaim, before we lose sight:
Hugo! You scoundrel! You gave us a fright!



SEARCHING FOR BOBBY FISCHER

A Book Review by John McCrary

Searching for Bobby Fischer. by Fred Waitzkin, Penguin, NY 1988

I rejected this book at the hardback price, but could not resist the newly-issued paperback at \$7.95. Now I'm glad I bought it, for it is filled with inside information about today's high-level chess world. The author is an ordinary Manhattan player who managed to father one of the top U. S. elementary school players, young Josh Waitzkin. Through Josh's activities, and those of Bruce Pandolfini, the author and master who tutors Josh, Waitzkin has been able to see the world of chess from many angles.

For example, Waitzkin took advantage of a trip to California to a scholastic event to tour Los Angeles in search of Bobby Fischer. He didn't find him, but he did talk with a number of folks who claimed to have known Fischer in the 1980's. They portrayed Fischer as a neo-Nazi who is obsessed with anti-Semitism (despite his own ancestry), and who has directed these feelings against Kasparov and against the governance of FIDE and the USCF. Waitzkin was taken on a tour of Los Angeles flophouses where Fischer reportedly has lived amongst derelicts of both sexes. One rumor, widely believed, was that Fischer was living in the home of a Los Angeles woman who has worked at two jobs to support him.

A major part of the book describes Waitzkin's visit in company with Pandolfini to the first Karpov-Kasparov match in Moscow. The author describes the Soviet society as one in which everyone lives in daily fear of reprisal from powerful high-level bureaucrats. These may be applied not only to an individual but to his boss as well, so that conformance with the directives of the powerful is assured. Nevertheless, in spite of (or because of) this system, Soviets are always seeking ways to circumvent oppressive rules. Waitzkin and Pandolfini were secretly allowed to visit a Soviet chess school despite official denial of permission; they were seated at the back and told not to speak English, lest they give themselves away. There they watched Soviet kids receive two formal classroom hours in endgame theory.

Other parts of the book focus on Washington Square in New York City, near the Waitzkin's home. There "chess bums" make a meager living from pick-up games for small stakes.

The author's vivid descriptions make the reader feel he is present at the scene. A weakness of the book is its focus on the seamy side of everything. For example, Waitzkin describes all chess professionals as impoverished, incomplete people. This contrasts with our encounter with Yasser Seirawan in Columbia last year, when he bragged of his six-figure income! Waitzkin strengthens his credibility by naming his sources. Since I haven't seen any public denials, I assume his information is reasonably accurate.

CHESS TOURNAMENT ACTIVITY IN THE US

Is chess growing, declining, or stagnant in the U. S.? Those of us who were playing during the Fischer boom remember the sudden upsurge in activity during those years, the sharp decline afterward, and then a return to the steady increase which had marked the 1960's. What is happening now?

Bob Smith, a Pittsburgh player, recently took it on himself to study this question. Writing in *En Passant*, the journal of the Pittsburgh Chess Club, he reports the findings as follows:

During the period from 1984 to the first part of 1989, there has been a steady increase in both the number of chess events held, and the total number of entries. There is a seasonal adjustment; the peak time for chess play is March and April, when the number of entries is about 50% higher than during the summer doldrums. During this more than five year period, the number of entries and events have increased at about 6% per year, and the increase has been steady, with no marked jumps or declines. Much of the increase has been found by Smith to be the result of increased junior/scholastic chess activity; but history suggests that this will in time translate into increased activity of all kinds. In an earlier article Smith compared chess activity among the several states. South Carolina came out rather badly in that comparison, finishing among the bottom few states (although we easily beat Vermont, which had no chess tournaments at all.) Our rise in scholastic tournaments may change that picture also.

Smith in his report directed a few swipes toward Grandmaster and *Chess Life* columnist Larry Evans, who has criticized the USCF for being too slow to promote chess and chess growth. Evans claimed in one public statement that "The USCF remained utterly stagnant during the great economic boom of the '80's." Smith points out that not only does his analysis refute that statement, but he goes on to add: "It is hard to reconcile (Evans' claim) with the demonstrable growth in scholastic chess, the tremendous increase in prize funds at such tournaments as the New York and World Opens, and the initiation of several new and large events such as the Software Toolworks Open, all of which have been well reported".

Here in the southeast there has clearly been a rise in tournaments that attract masters, something that once never happened. For the first time since the early days of this century we have a Southerner, Stuart Rachels, as US Co-Champion. Things are looking up; let's keep them going!

Secretary's Report by Don Lemaster

1989 SCCA BUSINESS MEETING

- 3:00 - Meeting was called to order by SCCA President John McCrary.
- John McCrary presented the Presidents report
 - John McCrary presented the Treasurers report for Pat Hart.
 - Motion was made by Doug Holmes to use the SASP funds for scholastic chess in S.C. (Passed)
 - Motion was made to hold a Team Championship. Mention was also made about additional tourneys for scholastic players. (Deferred to Officers)
 - Motion was made to change the rating cut-offs for the State Championship sections to 1900 and 1500. (Passed)
 - Motion was made that the State Championship sections not start before 10:00 AM on Saturday. (Passed)
 - Discussion was held regarding the problem of late entries causing delays in starting the 1st round of the State Championship. (Deferred to the Officers)
 - Paul Tinkler presented the findings of the nominating committee:

President - Doug Holmes	(elected)
Vice-President - John McCrary	(elected)
Secretary - Don Lemaster	(elected)
Treasurer - Pat Hart	(elected)
 - Doug Holmes gave a short talk on the need to expand our support and increase the participation of scholastic players in S.C.
 - John McCrary made a presentation of a plaque to Don Lemaster. The award was to signify the State Championship as being the 100th tournament that Don Lemaster had held as chief tournament director.
- 4:13 - Meeting was closed by Doug Holmes.

Constitution of the South Carolina Chess Association

As of October, 1989

Article I - Purpose

The South Carolina Chess Association, hereinafter abbreviated as SCCA, is an organization of persons interested in furthering the enjoyment of chess in South Carolina. It is recognized by the United States Chess Federation as the State Affiliate Chapter for South Carolina.

Article II - Membership

A. Any person may become a member of the SCCA by paying the authorized dues. Membership privileges begin when a SCCA elected officer, or member of the Membership Committee, certifies that dues have been received by issuing a signed membership card. Membership privileges terminate in the year indicated, at the end of the same calendar month in which they began.

B. Membership privileges include the following: (1) The right to vote in SCCA elections, and to hold SCCA office; (2) The right to participate and vote in Membership Meetings; (3) The right to receive Palmetto Chess; (4) Other rights as may be established by the SCCA.

C. Membership dues are determined solely by Membership Meetings. Different dues amounts may be established for different classes of members, but all members enjoy all rights of membership.

Article III - Officers

A. The SCCA has the following elected officers: President, Vice-President, Secretary, and Treasurer. The term of each elected officer commences at the end of each annual Membership Meeting, and ends at the end of the next annual Membership Meeting.

B. The elected officers have the following duties:

(1) The President is responsible for seeing that the provisions of this Constitution, and all decisions of the Membership Meetings, are properly carried out. He presides over the Membership Meetings.

(2) The Vice - President assumes the duties of the President whenever the President is unable to perform them.

(3) The Secretary keeps records of all SCCA members, including the dates of their memberships and their mailing addresses. The Secretary maintains official minutes of all membership meetings. The Secretary mails to members the Palmetto Chess and all other material designated to be mailed to the members.

(4) The Treasurer deposits all monies paid to the SCCA, and pays all debts incurred by the SCCA out of these monies. The Treasurer maintains a full record of all SCCA financial transactions, and makes this report available to all SCCA members through the Palmetto Chess. The Treasurer's report is also made verbally at the annual Membership Meeting.

C. Each year before the annual Membership Meeting the President appoints a nominating committee of five members who do not hold elected office. As far as possible, the committee members should represent different areas of the state. The nominating committee shall present a list of nominees for the elected offices at the annual Membership Meeting. Additional nominations may be made at the annual Membership Meeting by any member, provided that any nomination must be supported by two members other than the nominee to become official. Members not present at the annual Membership Meeting may make nominations in writing, provided that such nominations are presented by another member to the annual Membership Meeting; any officer receiving such a nomination is responsible for presenting it before the annual Membership Meeting. Written nominations must also be supported by two members other than the nominee.

D. Elections for all elected offices shall be held at the annual Membership Meeting. A plurality of votes is required for election.

E. The Editor of Palmetto Chess is appointed by the President, and may be removed by the President.

F. The SCCA membership committee is appointed by the President. The membership committee is responsible for promoting the growth of the SCCA membership. The committee may have any number of members, one of whom shall be designated by the President as Chairman.

G. When the annual list of South Carolina Delegates, Alternate Delegates, and Alternate Voting Members is certified to the United States Chess Federation each year, the President and Vice-President in office at the time of certification shall occupy respectively the first two positions on that list. The President shall appoint all other persons on that list.

H. If the office of President becomes vacant, the Vice-President becomes President for the remainder of that term. In that event, the office of Vice-President becomes vacant, and is filled according to Article III, Section (1).

I. If an elected office other than President becomes vacant, the other elected officers fill the vacancy by plurality vote in writing, after consultation with one another. The President is responsible for ensuring that the duties of the vacant office are fulfilled until the vacancy is filled.

J. An elected office becomes vacant if the officer dies or

resigns, or refuses to renew his SCCA membership, or moves to a principal residence outside of South Carolina. An elected officer may be removed from office for cause by a unanimous vote in writing of all other elected officers.

Article IV - Membership Meetings

A. The annual Membership Meeting will be held each year at the site and during the time of the South Carolina State Championship. All SCCA members will be notified of the starting time of the meeting.

B. Special Membership Meetings may be called by a plurality vote of the elected officers. All SCCA members must be mailed notice of Special Membership Meetings at least 21 days before that meeting, at their mailing address of record.

C. Actions taken at any Membership Meeting determine SCCA policy, provided that they do not contradict the SCCA Constitution.

Article V - Activities

A. The SCCA shall publish a periodical called Palmetto Chess at least three times a year. It shall include news of chess activities in South Carolina, as well as other items interesting to members. The Editor is responsible for publication, subject to the authority of the President.

B. The SCCA shall hold a tournament for the South Carolina State Championship each year. The tournament should, if possible, commence on the first Friday of October, conclude the following Sunday, and be held in a central area of South Carolina. The South Carolina state championship tournament shall be open only to permanent residents of South Carolina, and to those temporarily residing in South Carolina for the purpose of military duty or school or college attendance. The President shall be responsible for arrangements for the South Carolina State Championship tournament.

C. The SCCA shall hold a South Carolina State Postal Championship tournament at least every other year. That tournament may include a series of qualifying sections. Entry shall be open to all who are permanent residents of South Carolina, or who are temporarily residing in South Carolina for military or educational purposes, on the date their playing assignments are mailed. If an entrant ceases residing in South Carolina within ninety days of the mailing of his playing assignment, he is considered to have withdrawn from the tournament. If an entrant resides in South Carolina for at least the ninety days immediately following the mailing of his playing assignment, but subsequently moves out of the state, he may continue in the tournament section he is in and may compete for first place and the championship, if applicable, but he may not enter subsequent qualifying sections. If a player moves outside the United States at any time during the tournament, the Tournament Director may at his

discretion disqualify the player from the tournament. The President is responsible for tournament arrangements.

D. The SCCA shall have a State Scholastic Championship annually. Championship titles for different grade levels may be declared. The President is responsible for the arrangements.

E. Players in the State Championship Tournaments described above must remain members of the SCCA throughout the duration of the tournament.

F. If players are tied for the State Championship or State Postal Championship, co-champions shall be declared.

Article VI - Amendments

The SCCA Constitution may be amended by a two-thirds vote of those present and voting at any Membership Meeting.

1989 TREASURER'S REPORT By Pat Hart, Treasurer

Cash on Hand 10/7/88: \$ 792.08

Income:

1988 SC Championship	\$1364.50
1989 SC Open	128.00
1989 Postal Tourney	21.00
Dues	696.00
USCF - State Fund	236.41
Interest	56.06
Reimbursements	14.00
Tournament Ads	5.00

Total Income \$2520.97

Expenses:

1988 SC Championship	\$1364.50
1988 Fall Scholastic	78.75
1989 SCCA Scholastic	174.50
1989 School Donation	100.00
Magazine	490.93
Postage	264.25
Affiliation Renewal	30.00
Plaque	25.70

Total Expenses	\$2528.63
Net Gain (Loss)	(7.66)
Cash on Hand 10/7/89	\$ 784.42

CROSSTABLES OF THE 1989 SC CHAMPIONSHIP

Player	R1	R2	R3	R4	R5	Total
1. Wayne Williams	W8	D3	D2	W4	D5	3.5-1.5
2. Lee Hyder	W9	D5	D1	W7	D3	3.5-1.5
3. Douglas Holmes	W10	D1	D7	W8	D2	3.5-1.5
4. Harold M. Bush, Jr.	Bye	W6	W5	L1	D7	3-2
5. Paul Tinkler	W12	D2	L4	W9	D1	3-2
6. Harry Lee Abrams	D7	L4	D11	Bye	W10	3-2
7. Dennis Fish	D6	W11	D3	L2	D4	2.5-2.5
8. Rogelio Zaragoza	L1	W10	D9	L3	W11	2.5-2.5
9. Lindsay Blanks	L2	W12	D8	L5	Bye	2.5-2.5
10. Claude Corbett	L3	L8	W12	W11	L6	2-3
11. Bill Floyd	Bye	L7	D6	L10	L8	1-4
12. Klaus Pohl	L5	L9	L10	--	--	0-3

Bush and Floyd had half-point byes in the first round.

AMATEUR SECTION

Player	R1	R2	R3	R4	R5	Total
1. Irving Rosenfeld	W12	L2	W23	W4	W5	4-1
2. David Deininger	W27	W1	D4	W10	D3	4-1
3. J. Henry White	W18	W22	W7	D5	D2	4-1
4. Timothy Martin	W6	W17	D2	L1	W11	3.5-1.5
5. Lawrence Hughes	W8	W9	W13	D3	L1	3.5-1.5
6. Keith Eubanks	L4	W24	W19	W20	D7	3.5-1.5
7. Cdr. Wade Johnson	W10	W20	L3	W12	D6	3.5-1.5
8. David Caldwell	L5	D11	W22	W21	D9	3-2
9. Robert Folts	W15	L5	W16	D13	D8	3-2
10. John T. Leahy	L7	W14	W25	L2	W13	3-2
11. John Vonderlieth	W14	D8	L12	W23	L4	2.5-2.5
12. Kile J. Oody	L1	W27	W11	L7	D16	2.5-2.5
13. James E. Hughey	W26	W21	L5	D9	L10	2.5-2.5
14. Mark McKinnon	L11	L10	W29	D16	W21	2.5-2.5
15. John W. Haymond	L9	W26	L21	W22	D17	2.5-2.5
16. David A. Caudle	W19	D23	L9	D14	D12	2.5-2.5
17. P. Wickramasinghe	W24	L4	L20	W19	D15	2.5-2.5
18. Andrew A. Jackson	L3	L25	D24	W29	W27	2.5-2.5
19. Charles Ammons	L16	W29	L6	L17	W25	2-3
20. Larry E. Cox	W29	L7	W17	L6	--	2-3
21. Kenneth Copeland, Jr.	WF	L13	W15	L8	L14	2-3
22. John G. Roberts	Bye	L3	L8	L15	W26	2-3
23. Roger Ramsey	W25	D16	L1	L11	--	1.5-3.5
24. Greg Monson	L17	L6	D18	L27	Bye	1.5-3.5
25. William Pilaud	L23	W18	L10	D26	L19	1.5-3.5
26. Clarence Tichenor	L13	L15	W27	D25	L22	1.5-3.5
27. Jerry Wayne Burton	L2	L12	L26	W24	L18	1-4
28. William Haley	LF	--	--	--	--	0
29. Philip L. Lawrence	L20	L19	L14	L18	--	0-4

Scholastic Cross-Tables

PLAYER	ST	PRE		POST		1	2	3	4	TOT
		RTNG	RTNG	RTNG	RTNG					
1 SATTELMAYER, KURT	SC	1579		1602	W16	W-4	W-5	W-6		4.0
2 BALLARD, LONNY R	SC	1488		1478	W15	L-5	W13	W10		3.0
3 MOTEN, III ARTHUR	SC	1184		1213	W-9	W-7	L-6	W-8		3.0
4 MILLER, KENNY R	SC	1178		1210	W14	L-1	W-9	W-7		3.0
5 VELASQUEZ, DAVI	SC	1160/13		1237	W13	W-2	L-1	W14		3.0
6 DOWTY, DARYL W	SC	0		1391	W12	W11	W-3	L-1		3.0
7 YALLAPRAGADA, ANIL	SC	1170/3		1137	W-8	L-3	W11	L-4		2.0
8 JOHNSON, KIPP CURT	SC	0		1080	L-7	W14	W15	L-3		2.0
9 NGUYEN, TUAN CHI	SC	0		1096	L-3	W10	L-4	W15		2.0
10 ROBINSON, RUSTY AL	SC	0		1045	D11	L-9	W12	L-2		1.5
11 NIMMO, MICHAEL PAU	SC	0		1038	D10	L-6	L-7	W16		1.5
12 CARSWELL, CATRINA	SC	720/4		728	L-6	L15	L10	B--		1.0
13 BARRINEAU, RYAN PH	SC	0		1191	L-5	W16	L-2	U--		1.0
14 ANDREWS, TOMMY EDW	SC	0		988	L-4	L-8	W16	L-5		1.0
15 PETERSON, MICHAEL	SC	0		967	L-2	W12	L-8	L-9		1.0
16 SIMPSON, RAG R	SC	0		766	L-1	L13	L14	L11		.0

HUGO SCHOLASTIC/2

PLAYER	ST	PRE		POST		1	2	3	4	TOT
		RTNG	RTNG	RTNG	RTNG					
1 GRAY, DENNIS L	SC	1165/4		1352	W18	W12	W-6	W-4		4.0
2 CARSWELL, JR RICH	SC	981/14		1021	B--	L-3	W13	W14		3.0
3 CHANG, PETER PEI-C	SC	0		1317	W16	W-2	W15	L-6		3.0
4 WONG, GREG P.L.	SC	0		1389	W19	W-5	W14	L-1		3.0
5 DODD, ALAN TEXLEY	SC	0		1267	W11	L-4	W10	W-9		3.0
6 MARTIN, MATTHEW JO	SC	0		1403	W-8	W10	L-1	W-3		3.0
7 TREVINO, JOSEPH C	SC	0		1123	L-9	W17	W16	D-8		2.5
8 CRYMES, JESSICA L	SC	1082/12		1065	L-6	D18	B--	D-7		2.0
9 WHITTEN, BRAD	SC	1026		1039	W-7	L14	W12	L-5		2.0
10 JOHNSON, KYLE	SC	0		1117	W13	L-6	L-5	W16		2.0
11 KUHL, BRIAN JOSEF	SC	0		1052	L-5	L13	W18	W19		2.0
12 THOMAS, NATHAN T	SC	0		1142	W15	L-1	L-9	W18		2.0
13 ARARRANT, RANDY C	SC	0		1051	L10	W11	L-2	W17		2.0
14 HERNDON, BRIAN N	SC	0		1118	W17	W-9	L-4	L-2		2.0
15 BARTLEMAN, JIMMY P	SC	1032/6		957	L12	B--	L-3	U--		1.0
16 WIGFALL, TYRONE L	SC	0		884	L-3	W19	L-7	L10		1.0
17 DEUTZ, ARIANE L	SC	0		834	L14	L-7	W19	L13		1.0
18 JENKINS, TRAVOI E	SC	0		865	L-1	D-8	L11	L12		.5
19 SOLOMON, SHEL C	SC	0		660	L-4	L16	L17	L11		.0

PLAYER	ST	PRE		POST		1	2	3	4	TOT
		RTNG	RTNG	RTNG	RTNG					
1 TUROK, II KIM D	SC	1687/7		1759	W-9	W10	W-3	W-4		4.0
2 HAYES, DONNIE L	SC	1569/12		1588	W-7	L-4	W10	W-8		3.0
3 WILLIAMS, DENNIS W	SC	1477/10		1513	W11	W12	L-1	W-6		3.0
4 HULL, CHARLES A	SC	1230/11		1360	W-8	W-2	W-7	L-1		3.0
5 TAMAYO, KEVIN T	SC	1522/4		1425	L10	W-9	L-6	W11		2.0
6 GODBEE, MELVIN W	SC	1388		1383	L12	W11	W-5	L-3		2.0
7 BLANGO, DAMON	SC	1323/4		1404	L-2	W-8	L-4	W10		2.0
8 MANESS, DREW R	SC	1471/8		1404	L-4	L-7	W12	L-2		1.0
9 DEESE, SCOTTY S	SC	1359		1332	L-1	L-5	L11	W12		1.0
10 FRANCE, ANDREW E	SC	1331		1330	W-5	L-1	L-2	L-7		1.0
11 HEAGERTY, MIKE J	SC	1235/8		1234	L-3	L-6	W-9	L-5		1.0
12 BOONE, MICHAEL A	SC	1122/7		1155	W-6	L-3	L-8	L-9		1.0

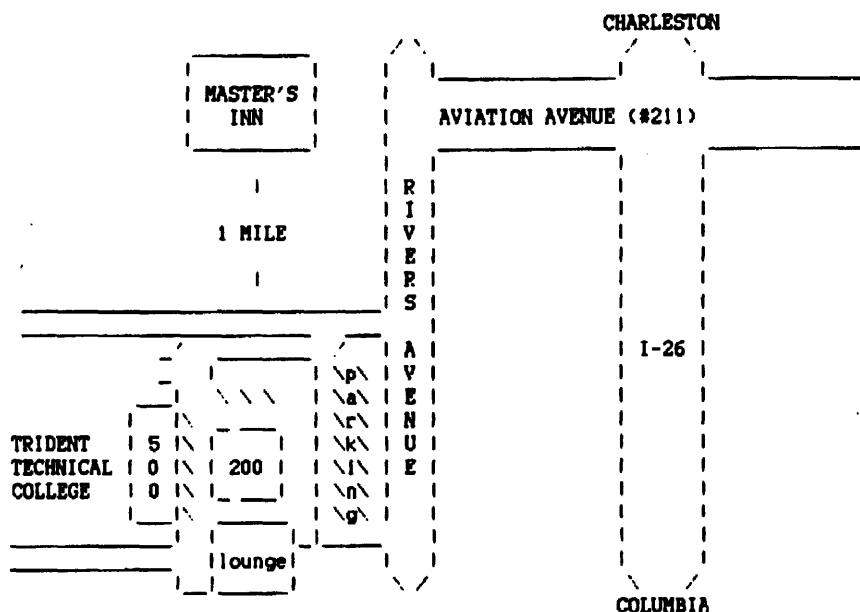
S. C. CHAMPIONSHIP RESERVE SECTION CROSS-TABLES

Player	R1	R2	R3	R4	R5	Total
1. Leonard Robinson	W16	W6	W4	W2	D3	4.5-0.5
2. Carl Fossa	W17	W10	W12	L1	W7	4-1
3. David Jarnagin	W15	W9	D5	W12	D1	4-1
4. Raymond Roberts, Jr.	W13	W15	L1	W10	D5	3.5-1.5
5. Michael Nichols	W8	L12	D3	W11	D4	3-2
6. John Matthew Loy	W14	L1	L11	W17	W12	3-2
7. Russell Neer	L12	W18	W9	W8	L2	3-2
8. Preston Wannamaker	L5	W16	W15	L7	D10	2.5-2.5
9. Joseph Kobleur	W18	L3	L7	W13	D11	2.5-2.5
10. Hugh F. Bridgers	W11	L2	W14	L4	D8	2.5-2.5
11. James W. Dudley	W11	W13	W6	L5	D9	2.5-2.5
12. David Amos	W7	W5	L2	L3	L6	2-3
13. David M. Cade	L4	L11	W16	L9	W14	2-3
14. Randall Altman	L6	W17	L10	W15	L13	2-3
15. Robert A. Loy	L3	L4	L8	L14	W18	1-4
16. John Rogers	L1	L8	L13	L18	W17	1-4
17. Theo. J. Schudel	L2	L14	W18	L6	L16	1-4
18. Roger Williams	L9	L7	L17	W16	L15	1-4

1989 SCCA FALL SCHOLAST/1

		PRE		POST						
PLAYER		ST	RTNG	RTNG	1	2	3	4	TOT	
1	HARRISON, BRYCE A	SC	1764/11	1809	W-3	W-4	W-8	W-5	4.0	
2	TAMAYO, KEVIN T	SC	1425/8	1497	W18	W12	D-5	W-8	3.5	
3	SESSOMS, MARK	SC	1372	1420	L-1	W11	W15	W10	3.0	
4	DODD, ALAN TEXLEY	SC	1267/4	1484	W14	L-1	W16	W-9	3.0	
5	HAYES, DONNIE L	SC	1588	1604	W-9	W10	D-2	L-1	2.5	
6	THURMOND, BRIAN V	SC	1390/3	1376	L12	D-7	W17	W16	2.5	
7	FRANCE, ANDREW E	SC	1330	1325	L17	D-6	W18	W13	2.5	
8	WILLIAMS, DENNIS W	SC	1513/14	1523	W11	W15	L-1	L-2	2.0	
9	GRAY, DENNIS L	SC	1352/8	1388	L-5	W14	W13	L-4	2.0	
10	BOONE, MICHAEL A	SC	1155/11	1212	W13	L-5	W12	L-3	2.0	
11	DAWKINS, BRIAN A	SC	0	1379	L-8	L-3	W14	W15	2.0	
12	WIGGINS, ELI H	SC	0	1388	W-6	L-2	L10	W17	2.0	
13	STEVENS, SCOTT M	SC	1519/4	1324	L10	W17	L-9	L-7	1.0	
14	MANESS, DREW R	SC	1404/12	1348	L-4	L-9	L11	W18	1.0	
15	MARTIN, MATTHEW JO	SC	1403/4	1313	W16	L-8	L-3	L11	1.0	
16	GODBEE, MELVIN W	SC	1383	1345	L15	W18	L-4	L-6	1.0	
17	STANAL, MIKE	SC	0	1107	W-7	L13	L-6	L12	1.0	
18	TOMLIN, ANTHONY J	SC	977/4	998	L-2	L16	L-7	L14	.0	

Charleston Tournament Site



1989 SCCA FALL SCHOLAST/2

PLAYER	ST	PRE RTNG	POST RTNG	1	2	3	4	TOT
1 SIMMONS, TROARS ST	SC	1551/12	1531	W-3	W-5	L-2	W-6	3.0
2 MOTEN, III ARTHUR	SC	1213	1246	W-8	W-6	W-1	L-3	3.0
3 PURVIS, JAE MIN	SC	1152	1196	L-1	W-8	W-7	W-2	3.0
4 SIMMONS, JAMALL	SC	1106/11	1163	L-6	B--	W-5	W-8	3.0
5 BALLARD, LONNY R	SC	1478	1451	W-7	L-1	L-4	W-9	2.0
6 HESS, JAMES R	SC	1245/9	1256	W-4	L-2	W-9	L-1	2.0
7 MILLER, KENNY R	SC	1210	1193	L-5	W-9	L-3	B--	2.0
8 ABDELSALAM, ANWAR	SC	0	846	L-2	L-3	B--	L-4	1.0
9 BURDELL, JAMIE W	SC	0	908	B--	L-7	L-6	L-5	1.0

COMING EVENTS

January Open, Augusta, Georgia

January 27-28, 1990

5-SS, 40/90 + 30 SD, at the Holiday Inn, 2155 Gordon Highway, Augusta. (Take Gordon Highway exit from I-520) EF \$25. Prizes \$150,75,50, + Class prizes A, B, C, D/E each \$75. Unr. \$50. Reg. 8-9am at site. Rds. 9:30, 1:30, 6:30, 9, 1:30. Inq. to Donny Gray, Box 7211, Fort Gordon, GA 30905, Ph.(404) 868-0018.

18th Snowstorm Special, Charleston

February 24-25, 1990

5-SS, 40/100, DS/1, Trident Tech (Bldg. 200) 7000 Rivers (Highway 52) North Charleston SC. (See Map!) EF \$15 if rec'd by 2/21, \$20 at site. \$100,70; B, C, D/E each \$50; Unr. Based on performance rating after Rd. 4. Reg: 9-9:50 am. Rds. 10, 2, 7, 10,2:30. Entry to Charleston Chess Club, PO Box 634, Sullivan's Island, SC 29482-0634; Ph. (803) 883-3783. Motel: Master's Inn, \$26.50-\$30.50, Phone (803) 744-3530.

1990 South Carolina Scholastic Championship

March 10, 1990

4-SS, at Trident Technical College, Building 200, 7000 Rivers Ave., Charleston (See Map.) In three sections: Two sections for High School, Grades 9-12; each 4-SS. (Rounds 9:30, 11, 1:30, 3) Open Section: Prizes to top 2, top under 1400, and top school, determined by four highest scores. Reserve Section: Under 1200 only. Prizes to top 2 and top Unrated. Elementary School, grades 1-8, 5-SS: Prizes to top 3, top school (four highest scores) and top unrated.

All Sections: Game/45. EF \$3 with optional pizza and soda lunch provided: add \$3 to entry (\$6 total). Register at site 8:30-9:15. USCF and SCCA membership required. South Carolina residents only. Entries: Douglas Holmes, 795-7424, or Don Lemaster, 955-2761.

Long Term Schedule:

Jan. 13-14: Grand Prix Tournament, Atlanta

Feb. 10-11: Atlanta Champtionship

March 24-25: Southern Congress, Atlanta

April 21-22: Georgia Congress, Atlanta

May 19-20: Georgia State Champinship, Atlanta

July 14-15: Georgia Class Championship, Atlanta

August: Probably 18th-19th: Charleston Classic (see next issue.)

August 25-26: Georgia Open, Atlanta

October 5-7: \$25,000 American Class Championship, Atlanta

November 10-11: Atlanta Open

December 8-9: American Chess Promotions Classic, Atlanta

Atlanta tournaments are at the Radisson Inn and Conference Center; many have scholastic tournaments in conjunction with them.

Palmetto Chess is published quarterly by the South Carolina Chess Association, a non-profit membership organization that organizes and promotes chess competition in South Carolina. The SCCA is the USCF state affiliate for South Carolina. Membership is \$8 per year, or \$3 for juniors under 19; adults may buy a regular USCF and SCCA combined membership for \$34 total, through the Secretary (Address below) Officers are:

President: Douglas Holmes, 917 White Marlin Dr., Charleston 29412.

Vice President: John McCrary, 1520 Senate St., Apt. 129, Columbia 29210.

Secretary: Don Lemaster, 1471 Pine St., West Columbia 29169.

Treasurer: Patrick Hart, PO Box 634, Sullivan's Island 29482.

The Editor of *Palmetto Chess*, to whom submissions should be sent, is Lee Hyder, 33 Longwood Dr., Aiken SC 29801. (803) 648-8924.

28

SCCA

1471 Pine St.

West Columbia, SC 29169

FIRST CLASS MAIL

Henry White
400 Greenlawn Apt. Q-2
Columbia SC 29209

10/90