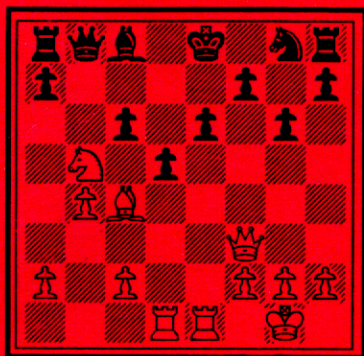


Palmetto Chess

Published by the South Carolina Chess Association



Morris - Kolvick
White to Play and Win

**State Championship
Rescheduled
(See Inside)**

Volume 29, Number 4

The State Championship Has Moved! Here's How to Get There!

By John McCrary

The 1994 S. C. State Championship has both a new site and a new time, due to the surprise closing of the Tremont Motor Inn. The tournament will now be held on November 12-13 at the Hampton Inn on Highway 378 (Garner's Ferry Rd.) in Columbia. Please disregard the *Chess Life* ad in the October issue; the corrected ad should appear in the November *Chess Life* in early October. The correct ad also appears in this issue of *Palmetto Chess*.

Players will like the new site, a recently renovated Shoney's Inn. It is easy to find, and located in a nice area near the V. A. Hospital. The adjoining Shoney's Restaurant will be a major convenience for players, and there are other restaurants and shopping nearby as well. Here's how to reach it:

(a) Take I-26 to Exit 116 (Temporary 478). Temporary 478 is a freeway bypassing Columbia. Exit 116 is the Columbia exit from I-26 that is nearest Charleston, beyond the airport; exit to the right (east) coming from Charleston. Follow Temporary 478 about eight or nine miles, and exit at the Garner's Ferry Road or Hwy 378 exit. The Hampton Inn is visible on the right as you exit.

(b) From downtown Columbia take Gervais St. north with the State Capitol on your right. Drive about a mile to Millwood St. and turn right on Millwood (U. S. 378). It is about 4.6 miles to the Temporary 478 overpass, and Shoney's Restaurant is just beyond it on the right. Millwood becomes Devine St. and then Garner's Ferry Rd. as you go along, but just keep following the main road. You will pass the V. A. Hospital shortly before the Temporary 478 intersection.

(c) Coming from Sumter on U. S. 378, just watch for the Shoney's and Hampton Inn on the left as you come through the suburbs. You will see the overpass ahead when you reach them.

IN THIS ISSUE:

News: Page 3

Comment: Page 4

Games: Page 5

Proposed Constitution: Page 10

USCF Meetings: Page 14

Tournament Announcements:

Page 16

Crosstables: Page 17

Three Way Tie in Charleston!

The fourteenth edition of the Charleston Classic Chess Tournament on the last weekend of August finished in a three-way tie. Winners of the thirty-eight player event were Charleston master Matt Morris, newcomer Stanislav Berdenikov, and A-player Kyle Oody.

Oody, who has had some successes in recent months, played his best tournament, drawing with Berdenikov and defeating Charlotte master Randy Kolvick in the last round. Morris also had a win over Kolvick, a spectacular one printed elsewhere in this issue, and a draw with Augustan Karl Burger in the last round. Berdenikov, a recent immigrant to the U. S. who was playing without a rating, gave up the draw in the second round and then won the rest. Thus each of them had four and a half points from the five rounds.

Burger and Doug Holmes each finished with four points, just behind the winners. Holmes suffered a defeat from Kolvick, while Burger drew with Pat Hart as well as with Burger.

The tournament was sponsored by the Charleston Chess Club, and directed by Henry Cabaniss. The cross-table and a number of games are in this issue.

Moving the State Championship

By John McCrary, SCCA President

Changing the site and date of the State Championship was a State President's worst nightmare! I awoke on August 16, having just flown in from Chicago the night before; I had the day off, hoping to rest up from the trip. Then I saw the newspaper headline: The Tremont Motor Inn was being closed that week in a surprise announcement by the landowners. Even the motel's veteran staff had been given little notice; Mr. Rose, the manager, had confirmed our tournament reservation only a month earlier without a hint of what was coming.

Complicating the problem further was the timing: it was the day after the *Chess Life* deadline for ads in the November issue (which appears in early October). Unless I could get a new ad in immediately, I could not advertise until the December issue, meaning that the tournament would probably have to be postponed until the Christmas season. One further problem: I had solemnly promised by daughter Mary that I would take her for her driver's license test that afternoon. Thus, I had only about five hours to find a new site.

Well, miracles happen, and a site was found. Details are elsewhere (Continued next page)

The Editor's Notes

First, I would like to thank John Roberts and Doug Holmes for responding to my plea for games. We have a plenty in this issue, and with your help at the State Championship, we will have plenty next time. Also, thanks to an arrangement with the Georgia State Chess Federation Newsletter, we will have games from the Riverfront Open on Labor Day weekend in Augusta. This was almost a South Carolina event; it was held a few hundred feet from the border, and a great many entrants were from the Palmetto State. One of our number, Lindsay Blanks, finished in a tie for first with the Augusta IM, Dr. Karl Burger.

Remember, this is your magazine, and we depend on you for contributions. Don't be shy! If you have any material on your club, or other items of interest, send them in.

On another matter, is there anyone out there who would like to work on *Palmetto Chess*? Once we had a games editor, and it would be good to have one again. The job can be fitted to your talents, but can include selection, layout, typing, annotation, or whatever. We can supply chess fonts for the Macintosh or Microsoft Windows. If you're interested, let me know.

The most interesting quotation I've seen lately is in the current *Chess Life*, attributed to Gennady Nesis, a chess coach in St. Petersburg, Russia. "Eventually, chess here will become what it is in every other

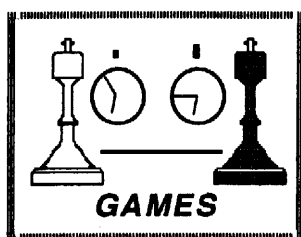
country -- a hobby. And who knows, maybe that's the way things should be." I've always thought chess should be left to those who play it for the enjoyment, whether at the novice or the grandmaster level. There are and have been grandmasters who would play chess for nothing--who would pay to play. I feel a kindred soul with them, but not with those who seem to dislike the game but play it for the money (such as it is--). At least, with the end of the cold war, we can set aside the theory that a country's ability in chess proves the superiority of their political system. Although -- maybe the Icelanders could make an argument for that. Man for man, they are the best chessplayers in the world, and they have the oldest democracy!

Moving, Continued

in this issue. But the story does not end there, for as I was driving home from the Hampton Inn, I heard that a tornado was wrecking Lexington, where Mary was to take the test, about eight miles from our house. As I was pulling into our driveway, my daughters were waiting to tell me that my boss had called to tell me I was being transferred to a new assignment!

Well, Mary passed her driver's test at another location, in spite of all this, and I joked that my Tuesday had gone like a typical Monday in the "Garfield" comic strip.

Does anyone else want this job?



From the Charleston Classic:
MORRIS (2319) vs. KOLVICK
(2414)

(Annotations by Matthew Morris)

1. e4 c5 2. Nf3 Nc6 3. d4 cd 4. Nd4
Nf6 5. Nc3 g6?! 6. Nc6 bc 7. e5 Ng8
8. Bc4 Bg7 9. Qf3 e6?!

Here the books say black can minimize his disadvantage with f5. The text, suggested by Leonid Shamkovich, weakens too many dark squares.

10. Bf4 Qa5 11. O-O! Be5

After this black will never catch up in development, though it's hard to fault him for following up consistently on his opening plan. That is, already it's hard to see a better line.

12. b4! Qc7 13. Nb5 Qb8 14. Be5
Qe5 15. Rad1 d5 16. Rfe1 Qb8
(Cover) 17. Bd5! cd 18. Qd5 Kf8

(If Bb7 or Ba6, 19. Re6 fe 20. Qe6
Kf8 21. Rd7+-.)

19. Qc5 Kg7 20. Rd8

It would be ghastly to let him back into the game with Nc7. Now the threat is 21. Qf8 and then Nd6.

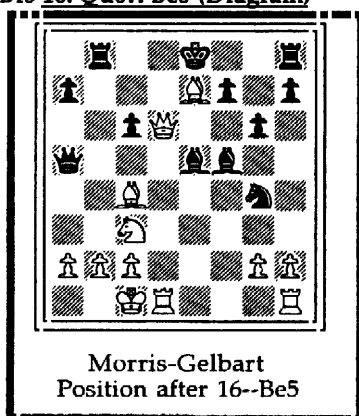
20. ... Ne7 21. Rh8 Kh8 22. Qe7 Ba6
(mate was threatened) 23. Nc7 Qb7
24. Qf6 Kg8 25. Na8 RESIGNS.

After Qa8, 26. Rd1-d8 consummates the pattern of dark-square invasions that has defined the game.

Incidentally, this recalls my first-ever win against a master, in 1978:

MORRIS (1813) vs. SHELDON
GELBART (2212)

1. e4 c5 2. Nf3 Nc6 3. d4 cd 4. Nd4
g6 5. Nc3 Bg7 6. Be3 Nf6 7. Bc4 d6
8. Qd2 Ng4 9. Nc6 bc 10. Bg5 Nf6
11. O-O-O Qa5 12. f4 Rb8?! (better
O-O) 13. e5 de 14. fe Ng4 15. Be7!
Bf5 16. Qd6?! Be5 (Diagram)



(giving back the queen with Kd7

leaves black better) 21. Re7 Kg8 22. Ne4! Rd8 23. h3 Rd6 24. Rd6 Qe1 25. Rd1 Qe3 26. Kb1 Kf8 27. Rc7 Ke8 28. hg Qe2 29. Nf6 RESIGNS.

More games from Charleston: Here's one that's a bit unusual, and a credit to Pat Hart: :

HART (2059) vs. BURGER (2267)

1. e4 d6 2. d4 N-f6 3. N-c3 c6 4. B-e2 Nb-d7 5. f4 Q-a5 6. Q-d3 e5 7. B-d2 exd4 8. Qxd4 Q-b6 9. Qxb6 axb6 10. B-f3 b5 11. N-h3 N-c5 12. N-f2 B-e7 13. O-O O-O 14. B-e3 Nf-d7 15. N-d3 R-e8 16. a3 B-f8 17. Ra-d1 N-f6 18. Nxc5 dxc5 19. e5 N-g4 20. B-c1 c4 21. N-e4 f5 22. N-d6 Bxd6 23. Rxd6 N-h6 24. Rf-e1 B-e6 25. c3 N-f7 26. Rd-d1 Ra-d8 27. B-e3 R-d3 28. B-b6 g5 29. Rxd3 cxd3 30. g3 g4 31. B-d1 R-e7 32. K-f2 R-d7 33. K-e3 N-d8 34. K-d2 Bd5 35. Kxd3 B-b3+ 36. K-e2 B-c4+ 37. K-f2 R-d2+ 38. K-e3 R-d3+ 39. K-f2 R-d2+ 40. K-e3 R-d3+ 41. K-f2 DRAW.

HARLEY (1443) vs. PATTERSON (1687)

1. e4 e6 2. d4 d5 3. exd5 exd5 4. N-f3 B-d6 5. B-d3 f6 6. c3 N-e7 7. O-O O-O 8. R-e1 B-f5 9. Bxf5 Nxf5 10. Q-d3 Q-d7 11. Nb-d2 N-a6 12. N-f1 Ra-e8 13. N-e3 Nxe3 14. Bxe3 c6 15. N-h4 R-e4 16. g3 Rf-e8 17. N-g2 N-c7 18. R-e2 a6 19. Ra-e1 g6 20. B-f4 Rxe2 21. Rxe2 K-f7 22. a4 Bxf4 23. Nxf4 N-e6 24. Nxe6 Rxe6 25. f3 Q-e7 26. K-f2 Rxe2+ 27. Qxe2 Qxe2+ 28. Kxe2 K-e6 29. g4 b6 30. K-e3 h6 31. h4 a5 32. f4 h5 33. f5+ K-f7 34. gxh5 gxh5 35. b4 K-e7 36. bxa5 bxa5

GAMES, CONTINUED

37. K-d3 K-d6 38. c4 c5 39. K-c3 K-c6 40. DRAW.

I found the next game quite interesting. There wasn't time to annotate it for this issue, but maybe next time. I'll just say that the lower rated player was in it nearly to the end.

FLOYD (1721) vs. RUCKER (1155)

1. e4 e5 2. N-f3 d6 3. B-c4 h6 4. c3 N-f6 5. Q-e2 B-g4 6. h3 B-h5 7. d4 B-e7 8. Nb-d2 N-c6 9. d5 N-a5 10. B-d3 b6 11. B-b5+ N-d7 12. b4 N-b7 13. B-c6 R-b8 14. Q-a6 Q-c8 15. Qxa7 O-O 16. N-f1 N-f6 17. Nf3-d2 B-g6 18. N-g3 N-d8 19. Q-a4 Nxc6 20. dxc6 b5 21. Q-c2 N-d5 22. O-O R-b6 23. Q-d3 N-f4 24. Q-c2 Rxc6 25. N-b3 R-a6 26. Bxf4 exf4 27. N-f5 Bxf5 28. exf5 B-f6 29. N-d4 Q-b7 30. Rf-d1 Rf-e8 31. a4 c6 32. a5 B-e5 33. N-f3 d5 34. Nxe5 Rxe5 35. R-e1 Q-e7 36. K-f1 R-a8 37. Rxe5 Qxe5 38. R-e1 Q-d6 39. Q-e2 K-f8 40. Q-e5 R-d8 41. Qxd6+ Rxd6 42. R-e5 d4 43. a6 d3? 44. a7 R-d8 45. K-e1 R-a8 46. K-d2 Rxa7 47. Kxd3 R-d7+ 48. K-e4 R-d2 49. Kxf4 Rxf2+ 50. K-g3 R-c2 51. R-c5 K-e7 52. Rxc6 K-d7 53. R-c5 K-d6 54. K-f3 f6 55. g3 h5 56. h4 K-e7 57. Rxb5 Rxc3+ 58. K-g2 K-d6 59. R-b7 R-c7 60. Rxc7 Kxc7 61. K-f3 K-b6 62. K-e4 K-b5 63. K-d5 Kxb4 64. K-e6 K-c4 65. K-f7 RESIGNS.

Now for a contribution from Doug Holmes, who kindly responded to our plea for games with some very interesting ones.

By Doug
Holmes:

GAMES, CONTINUED

Below are some interesting games with two different themes that I have played in the last few years. In the latter part of 1993, I started studying rook endgames. Well, I soon had these three games that fit in with my new knowledge. The first game against Floyd and the third game against Bedell both won the A prize for me. The fourth game is an interesting game against an up and coming young player from Charleston. If I do not find 25. f3, I am in big trouble. The last three games just amaze me. My friends cannot believe how many times I get to take on e5 with my knight while on the black side of the French. It happened yet again in the 14th annual Classic in the fifth round. It brought back memories of my two favorite victories with this theme. The win against Zelkind in Atlanta was my first victory over a master. The end of this game is just beautiful with the e6 pawn making moves 38 thru 42. It refuses to stop until it queens. Finally, this theme got started against the late Ed McCormick. He had just won the US Class Championship, at about the age of 75 I might add, when I pulled the ol' Nxe5 out on him at the Land of the Sky.

BILL FLOYD-DOUG HOLMES SNOWSTORM, 1994

1. e4 e6 2. d3 d5 3. Nd2 c5 4. g3 Nc6
5. Bg2 Nf6 6. f4 dxe4 7. dxe4 e5
8. fxe5 Nxe5 9. Ngf3 Bg4 10. Qe2

Be7 11. Qb5+
Qd7 12. Qxd7+

Nfxd7 13. 0-0 0-0 14. Nxe5 Nxe5 15.
Nf3 Nxf3+ 16. Bxf3 Bxf3 17. Rxf3
Bf6 18. c3 Rfe8 19. Re3 Rad8 20. Re1
Rd7 21. Kf2 Be5 22. Bf4 Bxf4 23.
gxf4 Rd2+ 24. Re2 Rxe2+ 25. Kxe2
Rxe4+ 26. Kf3 Re7 27. Rd1 f6 28.
Rd2 Kf7 29. a3 b6 30. b4 cxb4 31.
cxb4 Rc7 32. Rd3 Ke6 33. Kg4 g6 34.
Re3+ Kd5 35. h4 h5+ 36. Kf3 Rc6 37.
Rd3+ Kc4 38. Re3 Rd6 39. Re4+ Kb3
40. Re3+ Ka4 41. f5 gxf5 42. Kf4
Rd4+ 43. Kxf5 Rxh4 44. Kxf6 Rg4
45. Kf5 Rg1 46. Re7 Kxa3 47. Rxa7+
Kxb4 48. Ra2 Kc3 49. Rh2 Rd1 50.
Ke5 b5 51. Rxh5 b4 52. Ke4 Rd4+ 53.
Ke3 b3 54. Rc5+ Rc4 55. Rd5 Kb2 56.
Ra5 Kb1 57. Kd3 Rc2 58. Rb5 b2 59.
Rg5 Rc7 60. Kd2 Rc4
61. Kd3 Ra4 62. Kc3 Ka2 63. Rg2
Ra3+ 64. Kb4 Rf3 65. Kc4 Ka1 66.
Rxb2 Kxb2 0-1

DOUG HOLMES-SCOTT PARKER ATLANTA OPEN, 1994

1. d4 Nf6 2. c4 e5 3. dxe5 Ne4 4. Nf3
Bb4+ 5. Nbd2 Nc6 6. a3 Nxd2 7.
Bxd2 Bxd2+ 8. Qxd2 Qe7 9. Qc3 b6
10. e3 Bb7 11. Be2 0-0-0 12. b4 Rhe8
13. 0-0 Nxe5 14. Nxe5 Qxe5 15.
Qxe5 Rxe5 16. Rfc1 c5 17. Rc3 Kc7
18. Rd1 d6 19. Bf1 d5 20. Rcd3 cxb4
21. axb4 Re4 22. R3d2 b5 23. cxb5
Rxb4 24. Rd4 Rxd4 25. Rxd4 Re8 26.
Bd3 Kb6 27. Kf1 h6 28. Ke2 Kc5 29.
Ra4 Kb6 30. Rd4 Re7 31. Kd2 f6 32.
Ke2 Kc5 33. Kf3 Bc8 34. Kg3 Bd7 35.
Kh4 Bxb5 36. Bxb5 Kxb5 37. Rxd5+
Kc6 38. Ra5 Kb6 39. Ra1 a5 40. Kg4
Ra7 41. Kf4 Kc5 42. Kf5 a4 43. e4 a3
44. f4 Kb4 45. e5 fxe5 46. fxe5 Kb3
47. Ke6 a2 48. Kd6 Kb2 49. Rxa2+

(Continued Next Page)

GAMES, CONTINUED

LESTER BEDELL-DOUG HOLMES ATLANTA OPEN, 1994

1. e4 e6 2. d4 d5 3. Nd2 Nf6 4. e5 Nfd7 5. c3 c5 6. Bd3 Nc6 7. Ne2 Qb6 8. Nf3 cxd4 9. cxd4 f6 10. exf6 Nxf6 11. 0-0 Bd6 12. g3 0-0 13. Bf4 Bxf4 14. Nxf4 Nxd4 15. Nxd4 e5 16. Nxd5 Qxd4 17. Ne7+ Kh8 18. Nxc8 Raxc8 19. Bf5 Rc6 20. Qxd4 exd4 21. Rac1 Rd8 22. Bd3 Nd5 23. a3 Nb6 24. Rcd1 Rcd6 25. Rfe1 a6 26. Re7 R6d7 27. Rde1 Rxe7 28. Rxe7 Na4 29. Re2 Nc5 30. Rd2 Nxd3 31. Rxd3 Kg8 32. Kg2 Kf7 33. Kf3 Kg6 34. Ke4 Re8+ 35. Kxd4 Re2 36. Rb3 Rxf2 37. Rxb7 Rxh2 38. b4 Rd2+ 39. Kc5 Rd3 40. Rb6+ Kf5 41. Rxa6 Rxg3 42. b5 Rb3 43. b6 h5 44. Kc4 Rb1 45. Ra5+ Ke6 46. Rb5 Rc1+ 47. Kd4 Rc8 48. Rxh5 Rb8 49. Rb5 Kd6 50. Rg5 Rxb6 51. Rxg7 Kc6 52. Kc4 Rb1 53. Rg6+ Kb7 54. a4 Rb6 55. Rg8 Rb1 56. a5 Ka6 57. Rf8 Rc1+ ++

DOUG HOLMES-BRENT BOVAY 14TH CLASSIC, 1994

1. d4 Nf6 2. Nf3 g6 3. e3 Bg7 4. c4 d6 5. Nc3 0-0 6. Be2 Nbd7 7. 0-0 Re8 8. b4 e5 9. a4 h6 10. Ba3 Nh7 11. c5 e4 12. Nd2 dxc5 13. bxc5 Ng5 14. Bc4 Nf6 15. Qb3 Kh7 16. Ne2 Nh3+ 17. Kh1 Ng5 18. Nf4 Qd7 19. Bb2 c6 20. Be2 Qc7 21. Nc4 Bf8 22. Ne5 Ne6 23. Bc4 g5 24. Nxe6 Bxe6 25. f3 exf3 26. Rxf3 Bg7 27. Rc1 Ne4 28. Nxf7 Bxc4 29. Qxc4 Re7 30. Ne5 Bxe5 31. dxe5 Kg6 32. Qd3 Rae8 33. Qxe4+ Kg7 34. e6+ 1-0

WILL SMITH-DOUG HOLMES 14TH CLASSIC, 1994

1. e4 e6 2. d4 d5 3. e5 c5 4. c3 Nc6 5. Nf3 Qb6 6. Be2 cxd4 7. cxd4 Nh6 8. Nc3 Nf5 9. Bb5 Bd7 10. 0-0 Nxe5 11. Bxd7+ Nxd7 12. Qa4 Qc6 13. Qc2 Be7 14. Re1 0-0 15. Qd3 Bf6 16. Bf4 Rac8 17. Ne5 Nxe5 18. dxe5 Bd8 19. Rac1 Bb6 20. Nd1 Qa4 21. Rxc8 Rxc8 22. g3 Qxa2 23. Qd2 Ba5 24. Nc3 Bxc3 25. bxc3 Qxd2 26. Bxd2 h6 27. g4 Ne7 28. Kg2 Nc6 29. Be3 b6 30. f4 Na5 31. Rc1 Nb3 32. Rc2 d4 33. Rb2 Rxc3 34. Bd2 Nxd2 35. Rxd2 d3 36. Kf3 a5 37. Ke3 b5 38. Rb2 b4 39. Ra2 Ra3 40. Rb2 f6 41. exf6 gxf6 42. h4 Kf7 43. h5 d2+ 44. Kxd2 Rg3 45. Ke1 Rxg4 46. Ra2 Rxf4 47. Rxa5 f5 48. Rb5 Kf6 49. Ke2 Kg5 50. Rb6 Kxh5 51. Kd3 Re4 52. Rb8 Kg4 0-1

MIKE ZELKIND-DOUG HOLMES SOUTHERN CONGRESS, 1993

1. e4 e6 2. d4 d5 3. e5 c5 4. c3 Nc6 5. Nf3 Qb6 6. a3 a5 7. Be2 cxd4 8. cxd4 Nh6 9. Nc3 Nf5 10. Nb5 Be7 11. g4 Nh4 12. Nxh4 Bxh4 13. Be3 0-0 14. g5 Nxe5 15. 0-0 Nc4 16. Bxc4 dxc4 17. a4 h6 18. gxf6 g6 19. Qg4 Qd8 20. Rac1 Bd7 21. Rxc4 Bc6 22. Nc3 Be7 23. Bf4 Kh7 24. Be5 f5 25. Qg3 Rf7 26. b3 Bh4 27. Qh3 Qg5+ 28. Bg3 Bxg3 29. Qxg3 Qxg3+ 30. hxg3 Kxh6 31. Re1 Bd7 32. Re7 Rc8 33. Rxc8 Bxc8 34. Nb5 Re7 35. Re5 Bd7 36. Nd6 Bc6 37. Rxa5 Rd7 38. Nb5 e5 39. Na7 exd4 40. Nb5 d3 41. Nc3 d2 42. Kf1 d1Q+ 43. Nxd1 Rxd1+ 44. Ke2 Rb1 45. Ra7 Rxb3 46. a5 Ra3 47. Kd2 Kg5 0-1

ED
MCCORMICK-
DOUG HOLMES
LAND OF THE SKY, 1991

GAMES, CONTINUED

material with 7--
dxc4 followed by

1. e4 e6 2. d4 d5 3. Nd2 Nf6 4. e5
Nfd7 5. f4 c5 6. c3 Nc6 7. Ndf3 Qb6
8. Ne2 f6 9. g3 cxd4 10. cxd4 fxe5 11.
fxe5 Bb4+ 12. Bd2 0-0 13. Bg2
(Diagram) Ndx5 14. dxe5 Nxe5 15.
Nf4 Qe3+ 16. Qe2 Nxf3+ 17. Bxf3
Bxd2+ 18. Kd1 Qxe2+ 19. Nxe2 Rxf3
20. Kxd2 e5 21. Rac1 Bg4 22. h3 Bd7
23. Rc7 Bc6 24. Rc1 Re8 25. b4 Rf7
26. Rxf7 Kxf7 27.
Rc5 d4 28. b5 Be4
29. a4 Ke6 30. a5
Kd6 31. Rc1 Re7
32. g4 Rc7 33. Rf1
Rc2+ 34. Ke1 Bd3
0-1

John Roberts also responded to our plea for games, submitting two with his comments. He notes "I am especially proud of my win over Andre Osumi. As for the other game, it is not particularly well played; but I do reserve mischievous delight in obtaining stalemate against an overconfident opponent."

John Roberts-Andre Osumi

1 d4 Nf6 2 c4 e6 3 Nc3 d5 4 Bg5
Nbd7 5 e3 c6 6 Nf3 Qa5 7 Bd3 ?
Bb4

My book says Black is up

Ne4.

8 O-O dxc4 9 Bxc4 Bxc3 10 bxc3
Qxc3 11 Rc1 Qa5 12 Bf4 O-O 13
Bd6 Re8 14 Qd3 Qf5 15 Qb3 Nb6 I
declined the Q trade on move 15,
but Black is determined to offer it
again. All this time I was afraid of
Black playing b5. I began to think
that if he keeps moving his Q I may
be able to trap it! Even if I lose, that
alone would be very satisfactory.

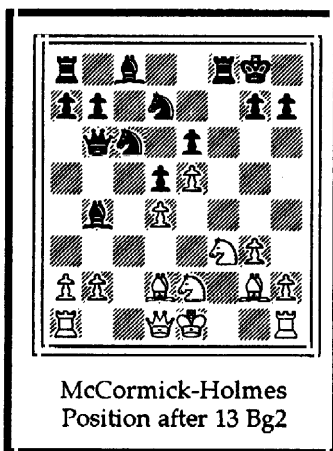
16 Bd3 Qd5 17 Qa3 Ne4 18 Bc7 Bd7
19 Ne5 f6 20 f3 Nd2
21 Rc5 Qxc5 22 dxc5
Nxf1 23 Bxh7+
Kxh7 24 Qd3+ Kg8
25 cxb6 fxe5 26 Kxf1
Re7 27 Qa3 Kf7 28
bxa7 Be8 29 Bb8 b6
30 Qa6 b5 31 Qb6
Kf6 32 Bc7 Rd7 33
Qb7 Rc8?

Bad positions seem
to conjure up
blunders. (Yes, but
what else was there?--
Ed) Remarkably,
our time elapsed has
remained almost

even: ten minutes, give or take a
couple. By move 37 I get down to
four minutes trying to be creative.

34 Qxc8 Rd1+ 35 Ke2 Rb1 36
Bxe5+ Kxe5 37 Qc7+ Qd8+ Kc5 39
Qd4 mate.

During his tenure at the Palmetto
CC Andre and I played many
skittles games, some five and ten
minutes. You can imagine how
many I lost! Lower rated players
(Continued next page)



McCormick-Holmes
Position after 13 Bg2

GAMES, CONTINUED

like myself get used to losing against experts in the first round of these little weekend Swiss tournaments. Games like this one keep you going. So, be of good cheer, tis the first round, not the last!

CURTIS GREGORY (Unr.) VS.
JOHN ROBERTS (1499), Hilton
Head #1, 1991

1 e4 c5 2 b3?

(Roberts is too hard on this move; I just saw a grandmaster game very similar to this, and White got a good game there too.--Ed)

2--d6 3 Bb2 e6 4 Nf3 a6 5 Be2 Nd7 6
O-O b6 7 d4 Bb7 8 Nbd2 Qc7 9 c4
Ngf6 10 d5 Be7? 11 dxe6 fxe6 12
Ng5 Nf8 13 Bg4 Nxe4 14 Qxe4 Bxe5
15 Qxe5 Ng6 16 Rae1 O-O 17 f4
Qe7 18 Qg3 b5 19 f5 exf5 20 exf5
Ne5 21 Bxe5 dxe5 22 Rxe5 Qf6 23
Rxc5 Qd4+ 24 Qf2 Rad8 25 Qxd4
Rxd4 26 Nf3 Rf4 27 cxb5 axb5 28
Ne5 Rd4 29 Rc7 Be4 30 Nc6 Bxc6 31
Rxc6 Rd5 32 g4 Ra8 33 f6 gxf6 34
Rcxf6 Rg5 35 h3 Kg7 36 Rf7+ Kg8
37 R7f5 Rxf5 38 Rxf5 Rxa2 39 Rxb5
Ra1+ 40 Kg2 Rb1

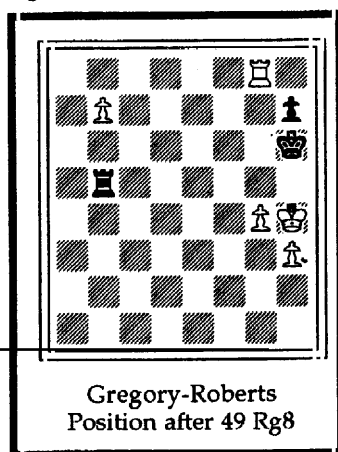
Pathetic play by Black has led to a won ending for White. But allow me to set the scene. Mr. Gregory and I went into the round tied with three points each. The scuttlebutt among the other players was the he should be rated about 1800, not only from his play in the tournament, but because he had beaten other higher rated

players. I started out intimidated.

During the game he played fast. By move 26, he had over 30 min. and I had about 15. By move 34 I had a tight-fitting three minutes left. Also, he exchanged at every opportunity. This, combined with his fast style, led me to continue.

White should confine Black with 41 Rb7 and advance the kingside.

41 Kg3? Kg7 42 Kh4 Rg1 43 Rb7+
Kh6 44 b4 Kg6 45 b5 Kh6 46 b6 Rb1
47 Rb8 Rb4 48 b7 Rb5 49 Rg8?
(Diagram) Rh5+!



My gamble has paid off. White played only to advance the b pawn, and ignored the rest of the board.

50 Kg3 Rxe3+ 51 Kf4 Rf3+ 52 Ke5
Re3+ 53 Kd6 Re6+ 54 Kc5 Rc6+ 55
Kd5 Rd6+ 56 Ke5 Re6+ 57 Kf4 Re4+
58 Kf5 Re5+ 59 Kf6 Re6+ 60 Kf7
Re7+ 61 Kxe7 stalemate!

A Proposal for a Revised SCCA Constitution

(Developed by John McCrary)

Since our current Constitution was adopted in 1985, there have been a number of amendments. The following proposed new constitution reflects those amendments as well as changes in practice.

(Proposed) Constitution of the
South Carolina Chess Association

Article I: Purpose

The South Carolina Chess Association, hereinafter abbreviated as SCCA, is an organization of persons interested in furthering the enjoyment of chess in South Carolina. It is recognized by the United States Chess Federation as the state affiliate chapter for South Carolina.

Article II: Membership

A. A person may become a member of the SCCA by paying the authorized dues. Membership privileges begin when an elected officer, or member of the Membership Committee, certifies that dues have been received by issuing a signed membership card. Unless otherwise determined by action of a Membership Meeting, memberships shall be for one year or an integral number of years, and each membership shall terminate in the year indicated at the end of

the calendar month preceding the calendar month in which it began.

B. Membership rights shall include the following: (1) The right to vote in SCCA elections, and the right to hold SCCA elective office; (2) The right to participate and vote in membership meetings; (3) The right to receive the SCCA periodical; (4) The right to participate in state championships, provided other eligibility requirements are met; (5) Other rights that may be established by the SCCA.

C. Membership dues are determined by Membership Meetings. Different dues may be established for different classes of members, but all members enjoy all rights of membership.

Article III: Membership Meetings

A. The Annual Membership Meeting shall occur each year at the site and during the time of the South Carolina State Championship Tournament. All SCCA members shall be notified of the time of that meeting.

B. Special Membership Meetings may be called by any three elected officers in writing, or upon written petition of at least ten per cent of all current SCCA members. All SCCA members must be mailed notice of Special Membership Meetings at least 21 days before that meeting, at their mailing address of record.

PROPOSED CONSTITUTION

C. Actions taken at any Membership Meeting determine SCCA policy, provided that they do not contradict the SCCA Constitution.

D. A quorum at any Membership Meeting shall be 20 SCCA members, or at least ten per cent of current SCCA members, whichever is smaller. No proxies are permitted.

Article IV: Officers

A. The SCCA has the following elected officers: President, Vice-President, Secretary, and Treasurer.

The term of each elected office shall commence at the end of each Annual Membership Meeting, and shall end at the end of the next Annual Membership Meeting.

B. The elected officers have the following duties:

(1) The President is responsible for carrying out the provisions of this Constitution and the policies established at Membership Meetings. He/she presides over the Membership Meeting.

(2) The Vice-President assumes the duties of the President whenever the President is unable to carry them out. If the President has failed to exercise a specific duty in a timely manner due to emergency, inaccessibility, or negligence, the Vice-President may exercise

that duty, provided that the Secretary and the Treasurer concur.

(3) The Secretary maintains records of all SCCA members, including the dates of their memberships and their mailing addresses. The Secretary maintains the official minutes of the Membership Meetings. The Secretary mails all items required to be mailed to the members.

(4) The Treasurer deposits all money paid to the SCCA, and pays all debts incurred by the SCCA. The Treasurer maintains full records of all SCCA financial transactions, and makes such records available to all SCCA members through the SCCA periodical, at the Membership Meetings, and upon request.

C. Election of officers occurs at the Annual Membership Meeting. The President shall appoint before that meeting a nominating committee composed of five SCCA members who do not currently hold elective office. As far as possible the committee members should reside in different areas of the state. The nominating committee shall present a list of nominees for the elected officers at the Annual Membership Meeting. Any SCCA member may make additional nominations, which shall be valid if seconded by two other SCCA members. The members of the SCCA present at the meeting shall vote, and a plurality shall elect.

(Continued Next Page)

PROPOSED CONSTITUTION

D. If the President's office becomes vacant, it shall be filled by the Vice-President for the remainder of that term. A vacancy in any other office shall be filled by an appointment by the President. A vacancy in an elected office occurs if the officer dies, resigns, refuses to renew his SCCA membership, or is removed from office. An elected officer may be removed only by a unanimous vote of the other three elected officers, or by majority vote of a Special Membership Meeting, if the officer becomes unable or unwilling to carry out the duties of the office properly, or acts in a manner detrimental to the purpose and policies of the SCCA.

E. The President shall appoint an Editor for the SCCA periodical. The President may appoint other officers and committees to further the purposes and policies of the SCCA. The President shall appoint members of the Membership Committee, and may issue signed membership cards. All persons appointed in accordance with this section may be removed by the President.

F. The delegates and alternate delegates to the United States Chess Federation shall be elected at the Annual Membership Meeting, in the same manner as the SCCA elected officers. The President may appoint alternate voting members for the United States Chess

Federation.

Article V: Activities

A. The SCCA shall publish a periodical containing news of South Carolina chess, and other material of interest to SCCA members. The frequency and content of this periodical shall be determined by the President and Editor, unless otherwise mandated by the Membership Meetings.

B. The SCCA shall hold a tournament for the South Carolina State Championship each year. That tournament shall, if possible, be held in October, or as near to October as practicable.

C. The SCCA may hold competition for South Carolina Championships in special categories, such as scholastic chess or correspondence chess, if mandated by Membership Meetings or arranged by the President. The SCCA may organize other tournaments such as a South Carolina Open, if sanctioned by the President or by Membership Meetings.

D. The SCCA may arrange any other activity to further chess in South Carolina.

Article VI: Amendments

This Constitution may be amended by two-thirds of members present and voting at a Membership Meeting.

The 1994 USCF Delegates' Meeting

By John McCrary

The policies of the U. S. Chess Federation are set each year by a meeting of delegates from 52 state associations. (California is divided into two associations, and the District of Columbia has one.) This year the delegates met in Chicago, as customary, at the site of the U. S. Open. Here is a summary of the major business conducted. I represented South Carolina as its delegate.

Dues increase: Everyone spent time and effort trying to avoid this, but in the end the proposed dues increases passed. Only youth memberships were not raised. The basic problem, ironically, is that scholastic memberships have grown. While this requires more USCF support personnel, the scholastic dues are insufficient to pay the costs without the increase. With the increase, the Federation will be able to retain their staff intact next year. With the increase, *School Mates* is projected to become more frequent and colorful. *Chess Life* remains a bargain at \$40; *Inside Chess* and *British Chess Magazine* are both more expensive, and they don't carry membership privileges. Of course, members are encouraged to renew early at the old rates if they wish.

has been pressed by various sources to side with the PCA, despite our membership in FIDE. Two motions to that effect were on the advance agenda this year. However, I proposed a substitute motion that called upon the two organizations to unify the title by synthesizing their best ideas. Although this is unlikely to occur soon, the delegates overwhelmingly passed my motion, as the only logical policy for the USCF at this time.

Women's Chess: SCCA members may remember Alexey Root, who as Alexey Rudolph won the 1989 U. S. Women's Championship in Spartanburg. Ms. Root was at the Delegates' Meeting to support increased USCF support for women's chess. She pointed proudly to the fact that the U. S. Women's Championship has been held annually since 1989. As the next speaker, I ensured that South Carolina received the proper recognition for having held the first two of those annual championships!. Ms. Root will be editing the *Women's Chess Newsletter*, which I believe is issued free upon request to anyone writing the USCF office for it.

Ratings: The Ratings Committee is studying various changes, including creating a new formula for provisional ratings that would use a large "k" factor that diminishes gradually until it reaches the established "k" factor. In talking
(Continued next Page)

FIDE vs. the PCA: The USCF

Annual Meetings, Continued

with the ratings experts, I found even more unusual ideas being studied, such as the possibility that a win with black might be rated differently from a win with white against the same opponent. I argued for a look at the practical as well as the theoretical side. Thus the new provisional formula would be harder to explain to beginners, while rating by color would complicate the already arduous task of processing ratings reports! I got the impression, however, that the committee might try to bypass the delegates.

The Awards Luncheon: This is always a special event for me, since I have been performing the Hall of Fame inductions since 1987. This year, I was privileged to sit by GM Robert Byrne, with his wife at his side, and my daughter Diana to my right. Also at the head table were GM Art Bisguier and his family, and USCF President Denis Barry and his wife Doris. The ballroom was the most beautiful yet, on the 9th floor, with a view of jets landing outside the picture windows. GM's Byrne and Bisguier, two of the three inductees, gave great speeches. GM Evans could not (or would not? -- Ed.) attend, but sent a speech to be read by former *Chess Life* editor Larry Parr. The speech started nicely, but quickly degenerated into a personal attack on former FIDE Delegate Don Schultz, who was present, and who had voted for Evans'

induction. That tasteless attack in a Hall of Fame acceptance speech was like graffiti on an otherwise beautiful work of art.

Editor's note. Evans was nominated for the Hall of Fame a year ago and was accepted by the Hall of Fame Committee and the Chess Trust. However, the nominating letter contained a stated condition, that if nominated, Evans must have the right to present or have presented a speech of his authorship. The Policy Board rejected this nomination, presumably on the basis of its being conditional. Following this, I put Evans' name again into nomination. My nomination stated no conditions; if Evans wished to look like an ass by using the occasion for spite, that was his business. Unfortunately, after being accepted this year, he did just that, or rather he and Parr did so jointly.

This reminds me of a question and answer I read some time ago:

Q. Why are academic feuds so vicious, when there is so little at stake?

A. Because there is so little at stake.

For "academic", read "chess". --MLH

More Legal Mates!

Thanks to Frank Cunliffe of Pittsburgh for this collection of miniatures, inspired by the combination of M. Kermur, Sire de Legal.

Buckley vs NN, 1840:

1 e4 c5 2 Nf3 d6 3 Nc3 e5 4 Bc4 Nc6
5 d3 Nge7 6 Bg5 Bg4 7 Nd5 Nd4? 8
Nxe5! Bxd1?? 9 Nf6+ gxf 10 Bxf7
mate.

Potter vs. Matthews, London, 1868:

1 e4 e5 2 d4 exd4 3 Bc4 c5? 4 Nf3 d6
5 O-O Nc6 6 c3 d3 7 Re1 Bg4 8 e5
Nxe5? 9 Nxe5! Bxd1 10 Bb5+ Ke7 11
Bg5+ f6 12 Ng6+ Kf7 13 Nxe8 mate.

Krueger-NN, Stettin, 1920

1 e4 d5 2 exd5 Nf6 3 c4 c6 4 dxc6
Nxc6 5 Nc3 e6 6 d3 Bc5 7 Bg5 O-O 8
Ne4? Nxe4 9 Bxd8? Bxf2+ 10 Ke2
Nd4 mate. (Nice to see Black win
one for a change!)

Rascher-Urban, Cottbus, 1934

1 f4 d5 2 Nf3 c5 3 d3 Nc6 4 Nc3 d4 5
Ne4 f5 6 Ng3 Nf6 7 e4 fxe4 8 dxe4
Bg4 9 Bc4 e5? 10 fxe5 Nxe5? 11
Nxe5 Bxd1 12 Bxf7+ Ke7 13 Nf5
mate. This time, the mate came
from a different square!

TOURNAMENT ANNOUNCEMENTS

**1994 South Carolina Chess
Championships, November 12-13,
Columbia**

5-SS, 35/90, SD/60, at the Hampton
Inn, 7333 Garner's Ferry Road,
Columbia 29209.

Sections: Championship, open to S.
C. residents, including students
and military. Prizes \$200-75-50-25,
trophies to top two. Amateur, open
to under 1900. Prizes \$60-40, U1700
\$30-20, trophy to first. Reserve,
open to under 1600. Prizes \$40-30,
U1400 \$20-10.

All: EF \$25 if received by 10/20,
\$30 at site. SCCA membership
required. Registration at site 8:00 to
9:15 a. m.; Rds. 9:30-2:30-7:30, 9:30-
3:30. SCCA annual meeting Nov.
13 at 2:30 pm. Information: (803)
796-2651. Entries: South Carolina
Chess Association, 564 Rainbow
Circle, West Columbia, SC 29170.
NS. NC. W. Hotel room: (803) 783-
5410; mention chess.

**1994 Fall Scholastics, November
19, Hartsville**

At the Governor's School for
Science and Mathematics, Coker
College, Hartsville. Open to all
students grades 12 and under.
Separate sections for grades 9-12,
and grades 8 - below. EF \$2.00.
USCF Membership required.
Contact: Dr. Clyde Smith, 706 Glen
Acres Dr., Hartsville, SC 29550 for
additional details.

Charleston Classic XIV
TD - Henry Cabaniss

August 27-28, 1994

#	Player	Rating	Round					Score
			1	2	3	4	5	
1.	Randy Kolvick	2414	W19	W10	W6	L2	L7	3.0
2.	Matthew Morris	2319	W20	W9	W8	W1	D3	4.5
3.	Karl Burger	2267	W21	W11	W18	D5	D2	4.0
4.	Lindsay Blanks	2129	W22	BYE	BYE	Withdrew		2.0
5.	Patrick Hart	2059	W23	W12	BYE	D3	L36	3.0
6.	Douglas Holmes	1977	W24	W13	L1	W25	W31	4.0
7.	Kyle Oody	1923	W25	D36	W38	W8	W1	4.5
8.	Gary Branton, Jr.	1900	W26	W15	L2	L7	W25	3.0
9.	Joseph Cummings	1897	W27	L2	L25	WF	W33	3.0
10.	Doug Cail	1832	W28	L1	D24	W32	W30	3.5
11.	William Floyd	1721	W29	L3	W27	L30	W34	3.0
12.	Stanley Lowery	1694	W30	L5	L26	D27	D23	2.0
13.	Joseph Patterson	1687	W31	L6	W28	D26	D16	3.0
14.	John Rogers	1620	W32	W38	BYE	L36	W26	3.5
15.	Charles Ammons	1613	W33	L8	L30	L34	L27	1.0
16.	William Wells III	1591	W34	BYE	L36	W24	D13	3.0
17.	John Haymond	1588	L36	L18	D32	W29	L19	1.5
18.	Normand St. Cyr	1527	W37	W17	L3	L31	L38	2.0
19.	Donald Wilson	1503	L1	L28	D29	W35	W17	2.5
20.	John Crawford	1500	L2	W29	L31	L33	W35	2.0
21.	William Pilaud	1500	L3	L30	L34	L37	L29	0.0
22.	Alvin Veronee, Jr.	1500	L4	L31	L33	BYE	W37	2.0
23.	Will Mason	1495	L5	L32	W37	L38	D12	1.5
24.	Bryan Rounds	1475	L6	W33	D10	L16	W32	2.5
25.	Brenton Bovay	1456	L7	W34	W9	L6	L8	2.0
26.	Patrick Harley	1443	L8	W35	W12	D13	L14	2.5
27.	John Dusky, Jr.	1438	L9	W37	L11	D12	W15	2.5
28.	Randall Altman	1416	L10	W19	L13	LF	---	1.0
29.	William Roudebush	1415	L11	L20	D19	L17	W21	1.5
30.	Robert Osbourne	1400	L12	W21	W15	W11	L10	3.0
31.	William Smith	1350	L13	W22	W20	W18	L6	3.0
32.	John Loy	1329	L14	W23	D17	L10	L24	1.5
33.	Ken Crane	1235	L15	L24	W22	W20	L9	2.0
34.	Edward Rucker	1155	L16	L25	W21	W15	L11	2.0
35.	Ronnie Farmer	1027	L38	L26	BYE	L19	L20	1.0
36.	Stanislav Berdennikov	UNR.	W17	D7	W16	W14	W5	4.5
37.	Brett Rashtchian	UNR.	L18	L27	L23	W21	L22	1.0
38.	John Vonderlieth	1993	W35	L14	L7	W23	W18	3.0

Palmetto Chess is published Quarterly by the South Carolina Chess Association, a non-profit membership organization that organizes and promotes chess competition in South Carolina. It is the official U. S. Chess Federation state affiliate chapter for South Carolina.

Membership is \$8 per year, or \$3 for juniors under 19. Adults may buy a regular USCF and SCCA combined membership for \$34 total, through the Treasurer (address below).

Officers are:

President: John McCrary, 564 Rainbow Circle, West Columbia, 29170

Vice-President: M. Lee Hyder, 33 Longwood Dr., Aiken, 29803.

Treasurer: Patrick Hart, PO Box 634, Sullivan's Island 29482.

Secretary: Vacant.

The Editor of *Palmetto Chess*, to whom contributions should be sent, is Lee Hyder, 33 Longwood Dr., Aiken 29803. (803) 648-8924.

Electronic mail communications may be sent to the Editor (m.hyder@genie.geis.com) or the Treasurer (p.hart4@genie.geis.com)

Palmetto Chess

33 Longwood Dr.
Aiken, SC 29803



Donald E. Lemaster
9/30/94
1471 Pine Street
West Columbia , SC 29169

