

Palmetto Chess

The Quarterly Newsletter of the South Carolina Chess Association

Winter 1996



**Wayne Williams and Pat Hart
Share 1995 State Championship**

Volume 31, Number 1

THE PRESIDENT'S PAGE

by John McCrary, SCCA President

Our spring calendar includes some important events in South Carolina. See the tournament ads in the rest of this issue for details, as well as for the stories on the major events held since our last issue. For a small state, we stay busy! Special thanks go to our new tournament directors and organizers, who are really making a difference. We old veterans cannot carry the load indefinitely by ourselves!

At the world level, the USCF is asserting itself

as a major leader. At the recent FIDE meeting, President Campomanes was finally persuaded to resign. He was replaced by a consensus candidate, previously little known Kirsan Iljumzhinov. He is president of the Kalmyk Republic, and reportedly has the ear of Boris Yeltsin himself! Top priority for Iljumzhinov is the reunification of the world championship. The agreement between the PCA and FIDE to reunify is falling apart, because Kasparov is insisting on the following terms:

1. That he be considered the incumbent champion, and the FIDE champion his challenger;
2. As a corollary to the first

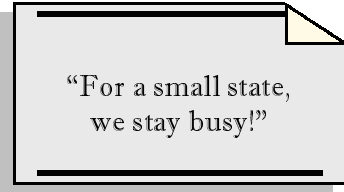
point, that he retain the title if the reunification match is tied;

3. That the PCA, which he dominates, assume control of the world championship competition system.

It does take a historian to see that Kasparov's demands threaten a return to the old days when world champions controlled their title. Abuses were rampant in those times, far more

than modern players realize.

For example, Lasker objected to a single, fairly innocent point made by Ca-



"For a small state,
we stay busy!"

pablanca in negotiations for a match in 1911; he terminated the negotiations as a result! When an arbitrator was about to rule in Capablanca's favor, Lasker announced that he did not consider himself bound by the arbitrator's decision. The result was that the Lasker-Capablanca match did not occur for another ten years, in 1921. There were a number of other cases in which legitimate challengers could not arrange matches; no one could make the champions play fair if they chose to be unreasonable.

One can only hope that the

(President continued on page 7)

My Biggest Chess Challenge (at Least in Postal Play)

by Bill Floyd

Almost three years ago I began play in a typical Golden Knights tournament. My opponents seemed rather typical of a GK section, with ratings ranging from 2196 down to 1295. As always, I considered a 1295 postal player to be about like a 1000 over-the-board player. It's just hard to get a postal rating much lower than 1300. That's because, in postal new players get a provisional rating that is almost always based on losing quickly to a 1900 or so and thus often start at 1500 or more even if they barely know the moves.

Thus, I payed very little attention until move 13 when I realized I was probably lost.

I then wrote on my next move to Howard Trimpi, a postal master (2196 when we began but he was quickly over 2200) playing in the section that "old Dick sure does seem to be playing stronger than 1295". He replied that he felt the same way and was almost sure that a draw was the best he would be able to do against him. So, we both wrote Dick asking just how a 1295 player was playing so strong (of course, we both suspected we might be playing a computer but we never discussed that per se). He replied that he hadn't played in a postal section since the mid eighties, and had been studying quite a bit. Immediately it hit me! Not only was he stronger than his last rating but even that was wrong because the USCF had converted the ratings since he played. I informed the USCF and the players of this, and the USCF converted his old rating to 1800, which was the equivalent for a 1295 player when they changed the system. Now, we still didn't know how much stronger he had gotten, but at least we now would not stand to lose so many rating points.

To make a long story short, Howard eventually won his game with Dick and I managed to draw mine. Dick is now well over 1900 and climbing fast. As a result of the rating correction, instead of losing 16 rating points for the draw, I actually gained 4. It was the toughest 4 points I ever earned.

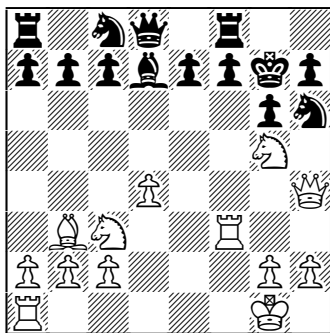
(Floyd continued on page 25)

South Carolina Games

Demese v. Patrick Harley

South Carolina Open
Blackmar-Diemer Gambit
June 17, 1995
(annotated by Henry White)

1. d4 ♖f6 2. ♘c3 d5 3. e4 dxe4 4. f3 (The Blackmar-Diemer Gambit was first advocated by Emil Josef Diemer in 1932. Its soundness is doubtful.) exf3 5. ♖xf3 g6 6. ♗c4 ♗g7 7. 0-0 0-0 8. ♖e1 ♘8d7 9. ♖h4 ♘b6 10. ♗b3 ♗d7 11. ♗h6 ♗g4 (Slightly better is ♗g4.) 12. ♗xg7 ♗xg7 13. ♘g5 ♘h6 14. ♖f3 (Slightly better is ♗xf7.) ♘c8??



Position after 14... ♘c8.

(Better is 14... ♗g4 15. ♖f4 ♗f5 16. ♖e1 e6 17. h3) 15. ♗xf7?? (♖xf7!! wins. 15. ♖xf7 ♖xf7 16. ♖xh6+ ♖xh6 17. ♖xf7 ♖g7 18. ♘xd8 ♘d6 19. ♘e6+ ♗xe6 20. ♗xe6 and white is up a piece.) ♘d6 16. ♖f1 ♘df5 17. ♖xf5 gxf5 18. ♗b3

♖e8 19. ♘d5 ♖c8 20. ♖f4 ♖f6 21. ♘h5+ ♖h8 22. ♖xf6 exf6 23. ♖xh6 ♖e3+ 24. ♖h1 ♖xg5 25. ♖h3 ♖d8 26. c3 f4 27. ♖f3 ♗c6 28. ♖f2 ♖e8 29. h3 ♖e3 30. ♖h2 (d5 is better) ♖g3+ 31. ♖xg3 fxxg3 32. ♖h1 ♖e2 33. ♖g1 (Again, d5 is better) ♖xb2 34. d5 ♗d7 35. ♖f1 ♖xh3 36. ♖xf6 ♗xg2+ 37. ♖g1 ♗e4 0-1.

Dennis Fish v. Jim Fant

South Carolina Open
Sicilian Defense
June 17, 1995

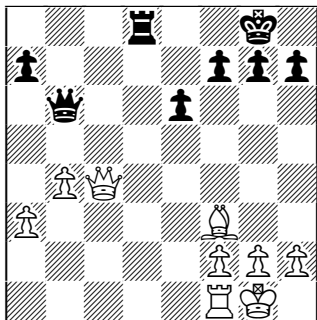
(annotated by Henry White)

1. e4 c5 2. c3 (The Alapin Variation in which white strives to maintain two center pawns. This variation was used by Alekhine toward the end of his career.) d5 3. exd5 ♖xd5 4. d4 ♘c6 5. ♖f3 ♗g4 6. ♗e2 e6 7. ♗e3 cxd4 8. cxd4 ♘f6 9. ♘c3 ♗b4 10. 0-0 ♖a5 11. ♖a3 0-0 12. ♖ac1 ♖fd8 13. a3 ♗xc3 14. ♖xc3 ♗xf3 15. ♗xf3 ♘xd4 16. ♗xd4 ♖xd4 17. ♖xb7 ♖8d8 18. b4 ♖b6 19. ♖c7 ♗4d7 20. ♖xd7 ♖xd7 21. ♖c8+ ♖d8 22. ♖c4 ♖d4 (This move blocks the pressure on f2. Instead, 22... h6 protects the against back rank shenanigans and prepares to seize the second rank with 23... ♖e2.)

Position after 22. ♖c4.

(Continued on page 5)

(Continued from page 4)



23. ♖c2 h6 24. h3 a5 25. ♖c8+ ♕h7 26. ♖f8 axb4 27. axb4 ♖g6 (The king moves into dangerous waters. The alternative 27...♞d7 is better, but passive.) 28. ♞b1 ♜d7 (28...♞c4 then 29...♞c2 was better. The key to this position is the weakness at f2. Black must not relent in his assault on f2.) 29. ♖e7 ♜e5 30. ♞b3 ♞d2 31. ♜e4+ ♕h5? (Better is f5 leading to 32. ♞g3+ ♕h5 33. ♜f3+ ♜xf3+ 34. ♞xf3 ♖g6 35. ♞g3+ ♕h5 36. ♖f7+ ♕h4 37. ♞e3) 32. g4+ ♜xg4 33. hxg4+ ♖xg4 (forced) 34. ♞g3+ ♖f4 35. ♖h4+ ♖e5 36. ♞f3 g5 37. ♖g4 h5 (Better is 37...♞d1+ 38. ♖g2 ♞d4 39. ♞e3 ♖xb4 which wins a pawn.) 38. ♖xg5 ♖xe4 39. ♞e3+ (Quicker is 39. ♖f4+ ♖d5 40. ♖xd2) ♖d4 40. ♖e5+ ♖c4 41. ♖c3+ 1-0

Chess on the net: An Up-

date

By Lee Hyder



I have established a World Wide Web page to serve South Carolina and the vicinity. It can be accessed using the Universal Resource Locator (URL) <http://www.groupz.net/~hyder/>. My intention is to post upcoming events in our area there. This will require that I have some information about them! Organizers are invited to send me word of planned events by either regular mail or e-mail (hyder@groupz.net).

Pat Hart continues to refine and update his Charleston Chess Club web page. It includes e-mail links to all South Carolina players who have given Pat their e-mail addressees. You can find his page at URL <http://www.awod.com/gallery/probono/chas-chess>.

Interested in ratings? The ratings of South Carolina players can be found on the net in several places. One is URL <http://www.cis.uab.edu/info/faculty/Sloan/ACF/ByState/USCF.SC>. Watch the capitalization! If this does not work, you can find it through Pat Hart's e-mail link.

The current flux (and its possible resolution) in FIDE is ad-

(Net continued on page 10)

TOURNAMENT NEWS

The 1995 Fall Scholastic

by John McCrary

Neither rain, nor high winds, nor sleet or snow will keep chessplayers from their appointed rounds. The "snow and sleet" part of that was proved back in 1973, when players plowed through a foot of the stuff to a Charleston tournament which became the inaugural "snowstorm" event. The "rain and wind" part was demonstrated in 1985, when Spartanburg hosted a successful simul by GM Edmar Mednis while a tornado raged only a mile or so away.

Now a new generation has extended the tradition, as 35 scholastic players descended on Columbia's Airport High School on November 11, 1995 for the SCCA Fall Scholastic. While Airport coach Curt Landrum quietly planned an evacuation route if necessary, the 35 players finished their games indifferent to the severe storms and 50-mph gusts outside. A brief, two second power outage provoked more contingency planning, but the lights cooperated and the only fireworks occurred on the boards inside.

The high school section resulted in a tie between the perfect scores of Brent Bovay and Jesse Inman. When the players failed to agree on a playoff game, the tiebreaks gave the only trophy to Inman. The middle school section resulted in another trophy to Davy Williams, who with his sister Krista is carrying on the legacy of their

(Continued on page 10)

January Open

by Clyde Smith

John Dusky won clear first in the third Annual January Open hosted by the Hartsville Chess Club and the Governor's School for Science and Math (GSSM) on January 13, 1996. Second place overall and first under 1800 was split between Brent Bovay of Charleston and Moses Williams of Florence with four points. Bovay lost only to Clyde Smith of Hartsville and gave Williams his only loss of the day. Maurice Watkins of Sumter earned first under 1400.

(President continued from page 2)

world chess championship can regain its dignity and status as the most valid world championship in all sports. Think about it: No other sport has a world championship based on the participation of nearly all the nations of the globe. (Most “world championships” are based only on a minority of such nations at best.)

Coming back to the home front, I have good news for all those of you who complained at the state championship that there are no bookstores around with good chess books for sale. A giant Barnes and Noble store, with probably 20-30 chess books, has recently opened across the street from Columbiana Centre, at I-26 and Harbison Boulevard, near Lake Murray just north of Columbia. When you consider that the Books-a-Million store, with another 10-20 title is just a couple of blocks away, and that the Waldenbooks superstore, with another 10-15 titles, is in the Columbiana Centre, it might be worth a trip to Columbia. Of course, many of these titles are also in the USCF catalog, so you should decide which books to

buy and then order from the USCF. Keep in mind that book purchases from the USCF support many USCF services.

Speaking of books, there are some excellent ones out now. Foremost is *The Bobby Fisher I Knew and Other Stories*, by Arnold Denker and Larry Parr. This book, which is available from the USCF, contains a number of entertaining personality profiles of people Denker has met through his historic career. Not all the profiles present the individuals in a positive light; for example, the chapter on IM Norman Whitaker details his crimes and frauds. I enjoyed the

chapter on L. Walter Stephens, the chess official who mistakenly forfeited Denker in a vital game against Reshevsky in the 1942 U.S. Championship. Reshevsky's flag fell,

“Think about it:
No other sport has a
world championship
based on the
participation of
nearly all the nations
of the globe.”

but Stephens, looking at the clock backwards, forfeited Denker! When the mistake was pointed out, Stephens said, “Does Kennesaw Mountain Landis ever reverse himself?” Stephens likewise refused to reverse himself. Hence the chapter title, “The Kennesaw Mountain Landis of Chess.” Denker

(President continued on page 8)

(President continued from page 7)

gets his revenge in the chapter, albeit in a good natured way. He opens the chapter by referring to Stephens as “a rigid and humorless man whom I once nicknamed Mr. Faux Pas.” Never mistreat someone who is going to mention you in a book!

Most of the personalities in the book are described in more favorable terms. The cause of chess history is greatly served by his work; without it, posterity would know little about such great contributors as Reinfeld and Horowitz, or about the good side of controversial figures like Alekhine. Highly recommended!!

Wish me luck in my quest for a new plateau: I am closing in on an expert rating in correspondence chess. I am 1987 with winning positions in three games against strong opponents, so hopefully the coveted 2000 will be broken soon!

My e-mail address is **endofterainbow@msn.com**. Unfortunately, my computer has suddenly stopped speaking to its modem for no apparent reason, and is resisting all my troubleshooting efforts to get them communicating again. Hopefully, I will regain e-mail capacity soon.

By Pat Hart

Brent Bovay is the kind of chess player we need more of in South Carolina. I am referring to someone who learns the game at a young age and continues to play long thereafter. He says, “I think the main reason for my success is that I have a strong love for the game. A friend of mine taught me how to play while we were bored. He soon lost interest but I never did!”

He has been playing for around two and a half years now, and his rating has gone from 1069 to around 1800. He usually studies and plays about five hours a week, not counting eight hours a weekend on the Internet Chess Center. He plays a lot of tournament chess (over ninety games in 1995), loves to play blitz chess the most and usually gets in fifty games a week. He also is playing postal chess (1900+), including the 1995 SCCA Postal Championship.

This young rising star has said, “One of the best things about playing is traveling to different places like Philadelphia for the World Open.” His biggest successes include first places in the US Class Championship C Section, the Daytona Open C section and the St. Petersburg Open B section. He has also tied for first the last two years in the

MINUTES FROM SCCA ANNUAL BUSINESS MEETING

Notes submitted by David K. Williams

The meeting was convened by SCCA President John McCrary at 2:07 p.m., October 15, 1995, at the Hampton Inn in southeast Columbia.

President McCrary introduced the other SCCA officers and the newsletter editor. He then reviewed parliamentary procedure.

The first item of business was scholastic chess. Representatives of Sumter High School and the Blue Ridge Chess Club (Anderson) discussed activities in their areas. President McCrary asked for volunteers to serve on the Scholastic Chess Committee, which is chaired by Dr. Clyde Smith with help from Mr. Spohn. Wayne Williams and Greg Frady volunteered. President McCrary asked Bill Corbett and David Williams to serve and issued an open invitation for anyone else to join. Approximately \$200 in USCF matching funds is available, and a motion was made to use this money to support scholastic chess. The motion was approved without objection.

Wayne Williams was introduced as chair of the Club Development Committee. A motion was made to add a club affiliate membership, and publish each affiliate's name and contact person in *Palmetto Chess*. Dues to be the same as a regular adult membership. This motion was passed without objection.

It was noted that printing costs for the Fall issue of *Palmetto Chess* were generously donated by Henry White, Esquire. President McCrary issued a proclamation of thanks on behalf of the SCCA.

An announcement was made that Bill Floyd is now the clearing-house representative for tournaments in South Carolina. His number is 803-787-3343. Persons wishing to organize tournaments are strongly encouraged to contact Mr. Floyd before scheduling an event in order to minimize conflicts.

(Meeting continued on page 23)

(Net continued from page 5)

dressed in detail on the Web Page of the New Jersey Chess Federation. Inputs include all our FIDE delegates, as well as those from Canada and Germany. Point your browser to URL <http://www.websong.com/chess/njfide.htm> to get the latest.

(Star continued from page 8)

South Carolina High School Championship.

His favorite books include *My System* by Arron Nimzovich, *My 60 Memorable Games* by Bobby Fisher, *The Life and Career of Mikhal Tal*, and Alekhine's Game Collections. He is known around the Charleston Chess Club as favoring the "Alkaline Defense". It takes a licking, but keeps on ticking.

(Fall continued from page 6)

dad, David Williards Sr. Davy Williams also had a perfect score.

The Saluda High team has been the "Atlanta Braves" of SCCA events, as they have finished breath-takingly close to the team plaque on various occasions, but have never won it. Well, this was the Braves' year and Saluda's too, as Dean Roesner's group were no to be denied; the Saluda team made sure no play-off was necessary this year!

As always, special thanks go to Airport High for their generous hospitality and outstanding facilities. The events would not be possible without the dedication of the coaches: Curt Landrum, Dean Roesner, Michael Spohn, and Clyde Smith. The USCF gained 14 new members.

Correspondence Chess II: How some of those openings continued.

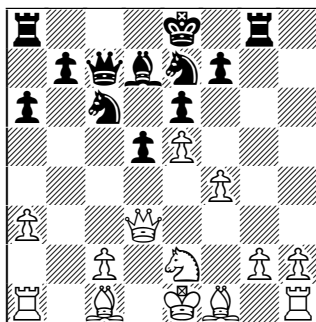
by Lee Hyder

Two issues ago I published a look at openings played in my games in the 1995 S. C. Correspondence Chess Championship. Some of those games have now been completed, and others are well along. Here's a first look at what happened.

The most interesting, and perhaps most theoretically important opening, was in my game as White against James Kellim. It started out:

1 e4 e6 2 d4 d5 3 Nc3 Bb4 4 e5 c5 5 a3 Bxc3+ 6 bxc3 Ne7 7 Qg4 Qc7 8 Qxg7 Rg8 9 Qxh6 cxd4 10 Ne2 Nbc6 11 f4 Bd7 12 Qd3 dxc3 13 Nxc3 a6 14 Ne2 Rc8 15 Rb1.

We are right on the cutting edge of grandmaster theory, and Black (in the few times that this has been played) has been losing. Let's take a look at the position.



Position after 14

Ne2.

The purpose of the strange move 14 Ne2 is to restrain the Black d pawn, which is one of Black's chief sources of counterplay, and to would have been 14 --O-O-O, strengthening the future control the

(Hyder continued on page 12)

(Hyder continued from page 11)

squares c3 and g3 as well. White will develop the white-squared B at g2, after g3 or g4, and at some time will start the advance of the h pawn as well. The move fits the theme of controlling Black's counterplay.

Against this Black has two basic plans. The one he chooses is counterplay on the c-file, recovering the pawn, and if possible acquiring some additional initiative. The alternative advance is d4. This is usually coupled with Nf5 and f6, sacrificing another pawn or two to get freedom for his pieces and a central attack. This bold speculation is perhaps better suited for over-the-board play than correspondence, where White has (in principle, anyway) unlimited time to work out a defense.

In the plan chosen, it should be noted that it is not enough for Black just to recover his pawn deficit. White would remain with two good bishops against one bad one, and a fearsome passed pawn; he would win virtually any endgame in which he neutralizes Black's initiative, excepting perhaps one with opposite colored bishops. That is the hidden theme behind what happens. Noguieres, the Cuban grandmaster whose games make up a good bit of the theory of this position, has played here 15--Nf5 to control the square d4, but without getting enough play to equalize. Hence Kellim takes the tack of direct attack.

15 -- Na5 16 Nd4 Nf5!?

A bold, direct challenge on the center. Kellim is willing to have his pawns smashed to get the initiative. The alternative is 16--Ba4; that is for another day and a ream of analysis. My feeling is that it is not necessarily better than what is played.

17 Nxf5 exf5 18 g3

Played after a week of analysis. There are a lot of lines involving advancing the h-pawn, but they do not seem to lead to an advantage.

18 -- b5 19 Bg2 Qxc2

(Hyder continued on page 13)

(Hyder continued from page 12)

I had decided in my analysis that 19 --Be6 was best, retaining the potentially passed d-pawn as a weapon. My plan was 20 O-O Qxc2, and now White has the choice of several moves: 21 Qxc2 Rxc2 22 Rf2; or simply 21 Rd1. In either case Black's initiative has diminished. Sacrificing the d-pawn opens lines and costs me a tempo in taking it, but still seems inferior to Be6.

20 Qxc2 Rxd2 21 Bxd5 Ke7

Provocative! The White B can reach b4 (via d2) with tempo; but it can't stay there. Instead, I found a good, surprising move, that contains a large dose of poison:

22 Kd1! Rgc8?

Playing his intended move without looking hard enough at the consequences. 22--Rc5 was best, and the game would have remained complex.

23 Bd2

This move, long deferred, now wins. The N cannot find a safe square; after Nc4 24 Kxc2 there is no adequate discovered check.

23--Bc6 (desperation) 24 Bxc6 Rxd2+ 25 Kxd2 Rxc6 26 Kd3, and White won in a few moves.

In another match, Randy Bryant was forced to withdraw by the pressure of his work. A shame; one of our games had just reached a critical point.

Bryant vs. Hyder, Catalan System:

1 c4 e6 2 g3 d5 3 cxd5 exd5 4 d4 Nf6 5 Bg2 c6 6 Bg5 Be7 7 Nf3 O-O 8 O-O Bf5 9 Nc3 Nbd7 10 Ne5 Nxe5 10 dxe5 Nd7 11 Bf4

White has allowed his e pawns to be doubled; but he will undo this by a timely e4, and then command more space. I decided to undertake a diversion to distract him from this plan.

(Hyder continued on page 14)

(Hyder continued from page 13)

11--Qb6 12 Na4 Qa5

The White N now cannot support e4; Black next aims at the e5 pawn.

12 Rc1 Rfe8 15 a3

White counters by a general Q-side advance; if he plays b4 he can get good play on the c file. I decided on active counterplay.

15 --b5 16 Nc3 b4 17 axb4 Bxb4 18 e4!

It comes anyway! Opening up the game just in time to avoid losing a pawn without compensation. Black now played dxe4, and in this very interesting position the game was suspended.

Chess in the Park - Permanent Tables for Chess to be installed at Finley Park

by Bill Floyd

Finlay Park in downtown Columbia is an \$8,000,000 plus investment by the City of Columbia. It was built to assist in efforts to revitalize the downtown as both a residential and business district. Through the efforts of Bobby Haynes, a Columbia Realtor and chess enthusiast, we will soon see chess tables (at least dedicated games tables) as a permanent feature at the park.

Since the park is the site of many concerts, outdoor plays and Columbia's highly successful May Fest, it will ensure exposure of the chess community to thousands of people each year.

(Columbia continued on page 15)

Columbia continued from page 12

Activities of this type can greatly increase public awareness of chess, especially since the scenes of play in Washington Park (New York City) as depicted in the recent chess movie "Searching for Bobby Fischer".

Columbia Chess Center Tournament Schedule

(Site) 410 D Veterans Road, Columbia, SC 29209
(Near Veterans Hospital off Garners Ferry Road @ I-77)

1996 Columbia Chess Championship

Beginning Tuesday, January 16, 1996, for six weeks we will play one round each night beginning at 8:00 PM. Players present will be paired. 1/2 point bye each for first and second round you miss. EF \$12. 6SS Game/90. \$\$ 3 months membership to first, 2 to top under 1600. Trophy to First (Continued from page 15) and title of Columbia Chess Champion for 1996, top under 1600 & under 1200.. We will post plaque at the club and each year engrave the names of the Champion, top under 1600 and under 1200. During the championship:

The Club is open Thursday from 7:30 PM to 11:30 PM except Thanksgiving (and Christmas if on Thursday or Friday). The Club is open on Sundays from 1:30 PM to 5:30 PM except week of Land of the Sky, Charleston Snowstorm & Classic, LPO, NC Open, Augusta Riverwalk, and State Championships not held at Club.

February Handicap - February 17 9SS Handicap - see below for details of the system

February Open - February 18 4SS - Game 60 in 8 player sections

Ides of March - March 16 & 17 - 5SS 35/90 Game 60 Will not be in Chess Life but will be heavily promoted \$25 entry by March 12. \$30 at Site. \$(b30) First \$200, 2nd \$100, A/B, C, D/E each \$100

Midlands Open - April 20 & 21 - 5SS 35/90 Game 60 See

(Columbia continued on page 16)

Columbia continued from page 13

Chess Life for Details

Southern Amateur - May 18 & 19 Class Tournament only See Chess Life for Details

South Carolina Open Championship - - 22 & 23 See Chess Life (may be held in June Greenville)

Helter-Swelter - July 13 - 9SS Handicap Trnm't - see below for details of the system (NOT RATED)

For all one-day tournaments, Entry Fee \$12 advance (received 3 days before) \$15 at site All Tournaments - - Registration 9:15 to 9:50 Rounds Start at 10:00 am, accelerated pairings possible 1/2 pt byes available (no more than two total) in any round if requested before first round (NS, NC, W)

For more info, call (803) 787-3343 - Make Checks payable to Bill Floyd & mail to 4315 Devereaux Road, Columbia, SC 29205

1995 Closed State Championship

~~The 1995 State Championship was held in Columbia on October~~

15-16, 1995. The tournament was directed by John McCrary . Forty three players competed in three sections. No masters entered the championship section, and several players had legitimate shots at winning the title. In the end, Wayne Williams and Pat Hart tied for first, each having 4 points.

Frederic Olmsted and John Haymond tied for first in the amateur section with 4 points each.

The reserve section was won by William Bowie of Sumter with a perfect score of 5 points.

Charleston Chess Club

The Charleston Chess Club meets Wednesdays from 7:00-10:00 pm at the McDonald's restaurant, 1201 Sam Rittenberg Boulevard (Hwy. 7) and Orange Grove Road. For further information, call

Pat Hart (803-883-3783) anytime after 1:00 pm. You can send e-mail to Pat Hart at <path@awod.com>, or you can visit the club's home page at <<http://www.awod.com/gallery/probono/chas-chess/>>.

Greenville Chess Club

The Greenville Chess Club has a blitz tournament on the first Thursday of each month. Interested parties should contact club president Wayne Williams at (864-246-6363).

Annual January Open

Annual January Open

| Player | 1 | 2 | 3 | 4 | 5 | Total |
|------------------------|-----|-----|-----|-----|-----|-------|
| 01. Brent Bovay | W9 | W6 | L4 | W6 | W7 | 4.0 |
| 02. John Dusky | W10 | W6 | W7 | W4 | W3 | 5.0 |
| 03. James Hughey | W11 | L7 | W9 | W15 | L2 | 3.0 |
| 04. Clyde Smith | W12 | W8 | W1 | L2 | L5 | 3.0 |
| 05. Moses Williams | W13 | L1 | W10 | W7 | W4 | 4.0 |
| 06. Richard Cheshire | W14 | L2 | W11 | L1 | W9 | 3.0 |
| 07. Larry Roberson | W15 | W3 | L2 | L5 | L1 | 2.0 |
| 08. Marshall Alexander | W16 | L4 | L15 | W11 | L10 | 2.0 |
| 09. Andy Moise | L1 | W14 | L3 | W13 | L6 | 2.0 |
| 10. Maurice Watkins | L2 | W13 | L5 | W12 | W8 | 3.0 |
| 11. James Willis | L3 | W16 | L6 | L8 | W15 | 2.0 |
| 12. Alan Watson | L4 | L15 | W14 | L10 | W16 | 2.0 |
| 13. Keyon Maree | L5 | L10 | W16 | L9 | W14 | 2.0 |
| 14. Abe Crystal | L6 | L9 | L12 | W16 | L13 | 1.0 |
| 15. David Chandler | L7 | W12 | W8 | L3 | L11 | 2.0 |
| 16. Nicole Riggs | L8 | L11 | L13 | L14 | L12 | 0.0 |

1995 STATE CHAMPIONSHIP

CHAMPIONSHIP

| Player | 1 | 2 | 3 | 4 | 5 | Total |
|--------------------|-----|-----|-----|-----|-----|-------|
| 01. Wayne Williams | W10 | W7 | W11 | L2 | W5 | 4.0 |
| 02. Pat Hart | L11 | W3 | W5 | W1 | W4 | 4.0 |
| 03. Gregory Frady | D12 | L2 | W10 | W9 | W7 | 3.5 |
| 04. Kyle Oody | W8 | L11 | W13 | W6 | L2 | 3.0 |
| 05. Keith Eubanks | W13 | W9 | L2 | W11 | L1 | 3.0 |
| 06. Pat Harlery | L7 | W14 | W8 | L4 | W12 | 3.0 |
| 07. Claude Corbett | W6 | L1 | D9 | W12 | L3 | 2.5 |
| 08. Norman Neel | L4 | W10 | L6 | W13 | D9 | 2.5 |
| 09. Dennis Fish | W14 | L5 | D7 | L3 | D8 | 2.0 |
| 10. Harry Abrams | L1 | L8 | L3 | B | W13 | 2.0 |
| 11. Henry White | W2 | W4 | L1 | L5 | U | 2.0 |
| 12. Ken Pestka | D3 | L13 | B | L7 | L6 | 1.5 |
| 13. David Williams | L5 | W12 | L4 | L8 | L10 | 1.0 |
| 14. James Fant | L9 | L6 | U | U | U | 0.0 |

AMATEUR

| Player | 1 | 2 | 3 | 4 | 5 | Total |
|----------------------|----|----|----|----|----|-------|
| 01. Frederic Olmsted | W6 | D4 | W2 | W5 | D3 | 4.0 |
| 02. John Haymond | W3 | W6 | L1 | W4 | W5 | 4.0 |
| 03. Bill Floyd | L2 | W5 | D6 | B | D1 | 3.0 |
| 04. William Smith | D5 | D1 | B | L2 | W6 | 3.0 |
| 05. James Hyatt | D4 | L3 | H | L1 | L2 | 1.0 |
| 06. John Roberts | L1 | L2 | D3 | H | L4 | 1.0 |

1995 STATE CHAMPIONSHIP

RESERVE

| Player | 1 | 2 | 3 | 4 | 5 | Total |
|----------------------|-----|-----|-----|-----|-----|-------|
| 01. William Bowie | W18 | W11 | W8 | W6 | W7 | 5.0 |
| 02. Patrick Murphy | W23 | W5 | L4 | W15 | W6 | 4.0 |
| 03. Mario Mercado | W17 | L6 | W16 | W4 | W8 | 4.0 |
| 04. Chris Jones | D21 | W14 | W2 | L3 | W9 | 3.5 |
| 05. Jerry Rothstein | W22 | L2 | W18 | L8 | W17 | 3.0 |
| 06. Pete Danker | W13 | W3 | W9 | L1 | L2 | 3.0 |
| 07. Ralph Sandifer | W19 | L9 | W22 | W20 | L1 | 3.0 |
| 08. James Kellim | W20 | W15 | L1 | W5 | L3 | 3.0 |
| 09. Jackson Kammerer | W16 | W7 | L6 | W12 | L4 | 3.0 |
| 10. Jill Crompt | L11 | L16 | W23 | W19 | W18 | 3.0 |
| 11. John Loy | W10 | L1 | L20 | W22 | D14 | 2.5 |
| 12. Edward Bowling | L15 | D13 | W14 | L9 | X | 2.5 |
| 13. Bill Willard | L6 | D12 | L21 | B | W20 | 2.5 |
| 14. Jesse Inman | B | L4 | L12 | W23 | D11 | 2.5 |
| 15. William Sander | W12 | L8 | W17 | L2 | U | 2.0 |
| 16. Michael Spohn | L9 | W10 | L3 | L17 | W22 | 2.0 |
| 17. James Lord | L3 | W21 | L15 | W16 | L5 | 2.0 |
| 18. Nichola Faulkner | L1 | W19 | L5 | W21 | L10 | 2.0 |
| 19. Ronnie Farmer | L7 | L18 | B | L10 | W23 | 2.0 |
| 20. Robert Farmer | L8 | B | W11 | L7 | L13 | 2.0 |
| 21. Lycurgus Ward | D4 | L17 | W23 | L18 | F | 1.5 |
| 22. Bradley Franz | L5 | W23 | L7 | L11 | L16 | 1.0 |
| 23. Cameron Smith | L2 | L22 | L10 | L14 | L19 | 0.0 |

1995 FALL SCHOLASTIC

HIGHSCHOOL

| Player | 1 | 2 | 3 | 4 | Total |
|----------------------|-----|-----|-----|-----|-------|
| 01. Brenton Bovay | W25 | W12 | W11 | W7 | 4.0 |
| 02. Jesse Inman | W28 | W8 | W3 | W6 | 4.0 |
| 03. Scott Bruce | W15 | W14 | L2 | W18 | 3.0 |
| 04. Buddy Martell | W16 | W13 | L7 | W14 | 3.0 |
| 05. Gary Warren | W20 | W9 | L6 | W15 | 3.0 |
| 06. Morgan Jones | W10 | W22 | W5 | L2 | 3.0 |
| 07. Erwin Hall | W26 | W21 | W4 | L1 | 3.0 |
| 08. Kirk Herlong | W24 | L2 | W26 | W13 | 3.0 |
| 09. Jason Griffith | W21 | L5 | W12 | W11 | 3.0 |
| 10. Allan Watson | L6 | W27 | D20 | W22 | 2.5 |
| 11. Thomas New | W19 | W23 | L1 | L9 | 2.0 |
| 12. Derek Gamble | W27 | L1 | L9 | W25 | 2.0 |
| 13. Xevin Kudra | W17 | L4 | W19 | L8 | 2.0 |
| 14. Willie McLeod | W29 | L3 | W17 | L4 | 2.0 |
| 15. Clint McKinney | L3 | W30 | W22 | L5 | 2.0 |
| 16. Michael Fink | L4 | L17 | B | W23 | 2.0 |
| 17. J. Stewart | L13 | W16 | L14 | W30 | 2.0 |
| 18. Ronald Boland | L22 | W24 | W23 | L3 | 2.0 |
| 19. David Chandler | L11 | W25 | L13 | W26 | 2.0 |
| 20. David Durant | L5 | W29 | D10 | D21 | 2.0 |
| 21. Forrest Davidson | L9 | L7 | W27 | D20 | 1.5 |
| 22. Marshall Bowles | W18 | L6 | L15 | L10 | 1.0 |
| 23. Suzanne Moore | W30 | L11 | L18 | L16 | 1.0 |
| 24. Diana McCrary | L8 | L18 | L28 | B | 1.0 |
| 25. Luther Wheller | L1 | L19 | W30 | L12 | 1.0 |
| 26. Rick Stover | L7 | W28 | L8 | L19 | 1.0 |
| 27. Chad Bennett | L12 | L10 | L21 | W28 | 1.0 |
| 28. Blake Crosby | L2 | L26 | W24 | L27 | 1.0 |
| 29. David Lai | L14 | L20 | U | U | 0.0 |
| 30. J. Gunter | L23 | L15 | L25 | L17 | 0.0 |

1995 FALL SCHOLASTIC

MIDDLE SCHOOL

| Player | 1 | 2 | 3 | 4 | 5 | Total |
|---------------------|----|----|----|----|----|-------|
| 01. David Williams | W5 | W4 | B | W2 | W3 | 5.0 |
| 02. Carlye Walsh | W3 | W5 | W4 | L1 | B | 4.0 |
| 03. Krista Williams | L2 | B | W5 | W4 | L1 | 3.0 |
| 04. Eric Brazil | B | L1 | L2 | L3 | D5 | 1.5 |
| 05. John Fullwood | L1 | L2 | L3 | B | D4 | 1.5 |

SOUTH CAROLINA GAME/15 CHAMPIONSHIP ROUND ROBIN

[illegible]

1995 COLUMBIA OPEN

| Player | 1 | 2 | 3 | 4 | 5 | Total |
|----------------------|-----|-----|-----|-----|-----|-------|
| 01. Donny Gray | W12 | W6 | W3 | L2 | W5 | 4.0 |
| 02. Douglas Holmes | W11 | W8 | F | W1 | W6 | 4.0 |
| 03. Emery Highley | W19 | W10 | L1 | W13 | W8 | 4.0 |
| 04. Curtis Graham | D14 | D13 | D7 | W10 | W11 | 3.5 |
| 05. Claude Corbett | D18 | W12 | D13 | W7 | L1 | 3.0 |
| 06. Morgan Cooper | W22 | L1 | W20 | W14 | L2 | 3.0 |
| 07. Patrick Harley | W21 | D17 | D4 | L5 | W13 | 3.0 |
| 08. Frederic Olmsted | W16 | L2 | W9 | W15 | L3 | 3.0 |
| 09. Jackson Kammerer | L13 | W16 | L8 | W20 | W15 | 3.0 |
| 10. Michael McHale | W15 | L3 | D11 | L4 | W18 | 2.5 |
| 11. Bryan Rounds | L2 | W22 | D10 | W17 | L4 | 2.5 |
| 12. Albert Carlson | L1 | L5 | H | W16 | W19 | 2.5 |
| 13. Tobin Logan | W9 | D4 | D5 | L3 | L7 | 2.0 |
| 14. William Pilaud | D4 | W18 | H | L6 | U | 2.0 |
| 15. Tony Makarome | L10 | W19 | W18 | L8 | L9 | 2.0 |
| 16. Michael Hawkins | L8 | L9 | W22 | L12 | W20 | 2.0 |
| 17. Kyle Oody | W20 | D7 | F | L11 | U | 1.5 |
| 18. Jerry Rothstein | D5 | L14 | L15 | W21 | L10 | 1.5 |
| 19. John Roberts | L3 | L15 | W21 | H | L12 | 1.5 |
| 20. David Rothstein | L17 | W21 | L6 | L9 | L16 | 1.0 |
| 21. Bradley Franz | L7 | L20 | L19 | L18 | H | 0.5 |
| 22. James Lord | L6 | L11 | L16 | U | U | 0.0 |

(Meeting continued from page 9)

Lengthy discussion was held regarding issues pertaining to the South Carolina Closed Championship, particularly with regard to the practice of letting players “play up.” A motion was made to keep the current format and extend an invitation to masters to attend. This motion was approved with an amendment to have someone (Wayne Williams volunteered) survey experts and masters and report to next year’s business meeting. An amendment to have class sections in the South Carolina Closed with the ability to play up was defeated.

Election of new officers was held with the following results:

President - John McCrary (Columbia)

Vice President - Lee Hyder (Aiken)

Secretary - Bill Willard (Anderson)

Treasurer - Pat Hart (Charleston)

John McCrary was also elected USCF Delegate, and Lee Hyder was elected alternate USCF Delegate.

The meeting was adjourned at 3:13 p.m.

1995 TREASURER'S REPORT

By SCCA Treasurer Pat Hart

BALANCE 9/30/94 \$905.67

INCOME

| | |
|----------------------|-----------|
| 1994 SC Championship | \$1736.25 |
| USCF Dues | \$638.00 |
| Dues | \$632.00 |
| USCF State Fund | \$225.40 |
| 1995 SCCA Scholastic | \$117.00 |
| Donations | \$50.00 |
| 1995 SCCA Postal | \$30.00 |
| 1994 Fall Scholastic | \$24.00 |
| Interest | \$19.71 |
| Tourney Ad(s) | \$17.00 |

TOTAL INCOME \$3489.36

NET GAIN/LOSS \$458.42

BALANCE 9/30/95 \$1364.09

EXPENSES

| | |
|-----------------------|-----------|
| 1994 SC Championship | \$1436.00 |
| USCF Dues | \$638.00 |
| Magazine | \$355.75 |
| 1995 SCCA Scholastic | \$183.83 |
| Postage | \$109.79 |
| Scholastic Assistance | \$92.17 |
| 1994 Fall Scholastic | \$90.40 |
| Affiliation Renewal | \$90.00 |
| Bank Charge | \$22.00 |
| Cartoons | \$7.00 |
| 1995 SCCA Postal | \$6.00 |

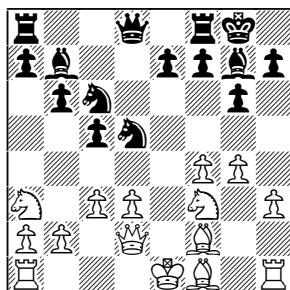
TOTAL EXPENSES \$3030.94

(Floyd continued from page 3)

The game, which represents hundreds of hours of work on my part to salvage a draw from a lost position, follows:

Floyd vs. Matson
Golden Knights 94N45
 Closed Sicilian

1. e4 c5 2. d3 g6 3. f4 ♖g7 4. ♜f3 ♜c6 5. c3 d6 6. ♖e3 ♜f6 7. ♜a3? (This was weak, especially without an immediate ♜c2 on the next move.) 0-0 8. h3 b6 9. g4? (Another premature, poorly thought out move.) ♖b7 10. ♜d2 d5 11. exd5 ♜xd5 12. ♖f2??



Position after

12 ♖f2??

(This just

about sealed a loss.

After realizing what a mess I was in, I almost resigned. ♜c2 here could still have given White decent chances, but now, White has major problems.) f5 13. g5 ♜h8 14. ♖e2 e5 15. fxe5 ♜xe5 16. ♜g1 ♜xf3+ 17. ♖xf3 ♜e8+ 18. ♜f1 ♜e3+ 19. ♖xe3 ♖xf3 20. ♜e1 ♜d7 21. ♜g3 ♖d5 22. b3 ♜ad8 23. ♖f4 a6 24. ♜xe8+ ♜xe8 25. ♜c4 ♖xc4 26. dxc4 ♜xd2 27. ♖xd2 ♖e5 28. ♜e3 ♜g8 29. ♜f2 ♜f7 30. ♜f3 ♜e6 31. b4 ♖d6 32. ♜d3 ♜e7 33. a3 ♜e4 34. ♜e3 ♜e6 35. ♜d3 ♜e4 36. ♜e3 ♜xe3 37. ♖xe3 ♜e6 38. h4 ♖f8 39. ♜f4 ♜d6 40. ♖d2 ♖g7 41. ♜f3 ♜c6 42. a4 a5 43. b5+ ♜d7 44. ♜f4 ♜d6 45. ♖e1 h6 46. ♖d2 ♖e5+ 47. ♜f3 hxg5 48. ♖xg5! (The saving move. After this, Black cannot snatch the rear c pawn because of 49. ♖d8 with winning chances going over to White. And Black fails to get the break he thought sure he would have after the expected 48. hxg5?) ♜d7 49. ♖d2 ♖f6 50. ♖e1 ♖e5 51. ♖d2 ♜e6 52. ♖e1 ♖h2 (Here Black offers a draw which I accepted.) ½-½.

GREENVILLE COUNTY SWISS

May 4, 1996 Greenville County Swiss

3-SS 30/60, G/60

Rotary Hall, Chimmney Square Shopping Plaza, Hedge Street,
Simpsonville, South Carolina.

EF: \$15 by May 2, \$20 at site, \$2 discount for GCC members, to
be deducted from the prize money if awarded.

2 Sections: Open/ U1600. \$\$/entries, minus expenses.

SCCA membership required, OSA.

Registration 8:30-9:15 Rounds 9:30-2:00-6:30

Enter: Norbert C. Thiemann

110 Village Park Drive #79, Simpsonville, South Carolina 29681
(864-963-7441)

NS NC

SNOWSTORM

24th Snowstorm Special: February 24-25, 1996. **Site:** Trident Technical College, Building 200, 7000 Rivers Avenue (Highway 52), North Charleston, South Carolina. **Entry Fee:** \$30 by February 21, 1996; \$35 at site: School (K-12) \$5. **Prizes:** \$950 b/50: 1st- \$200 (Gtd.); 2nd- \$150 (\$100 Gtd.); A - B - C - U1400 each \$100-50 (70% Guaranteed); USCF (only) to Top School entry; Unrated based on performance rating after round four; more \$\$ per entries. **Time Limit:** 35/90; SD/60. Rounds: 10 - 2 - 7; 10 - 2:30 . **Enter:** Charleston Chess Club, PO Box 634, Sullivan's Island, SC 29482-0634 (803-883-3783 after 1:00 pm). E-mail address: path@awod.com. **Registration:** 9:00-9:55 am. **Motels:** Budget Inn (803-747-7691) \$32; Masters Economy Inn (803-744-3530 / 800-633-3434) \$32-\$39; Knights Inn (803-744-4900 / 800845-1927) \$27-\$31, (Prices subject to change).

Palmetto Chess is published quarterly by the South Carolina Chess Association, a non-profit membership organization that organizes and promotes chess competition in South Carolina. It is the official United States Chess Federation state affiliate chapter for South Carolina.

Membership is \$8 per year, or \$3 for juniors under age 19.

Officers of the South Carolina Chess Association are:

President- John McCrary, 564 Rainbow Circle, West Columbia 29070

Vice President- M. Lee Hyder, 33 Longwood Dr., Aiken 29803 E-mail m.hyder@genie.geis.com

Secretary- Bill Willard, 506 West North 4th Street, Seneca 29678

Treasurer- Pat Hart, PO Box 634, Sullivan's Island 29482 E-mail path@awod.com

Palmetto Chess is edited by:

Bill Floyd, 4315 Devereaux Road, Columbia 29295, and

Henry J. White, 320 Whitehurst Way, Columbia 29223 E-mail d4Nf6@aol.com

**Palmetto Chess
4315 Devereaux Road
Columbia, SC 29205**